

DISCLAIMER

THE USE OF AND RELIANCE UPON THIS RECORDED-DATA BY THE HEREIN NAMED COMPANY (AND ANY OF ITS AFFILIATES, PARTNERS, REPRESENTATIVES, AGENTS, CONSULTANTS AND EMPLOYEES) IS SUBJECT TO THE TERMS AND CONDITIONS AGREED UPON BETWEEN SCHLUMBERGER AND THE COMPANY, INCLUDING: (a) RESTRICTIONS ON USE OF THE RECORDED-DATA; (b) DISCLAIMERS AND WAIVERS OF WARRANTIES AND REPRESENTATIONS REGARDING COMPANY'S USE OF AND RELIANCE UPON THE RECORDED-DATA; AND (c) CUSTOMER'S FULL AND SOLE RESPONSIBILITY FOR ANY INFERENCE DRAWN OR DECISION MADE IN CONNECTION WITH THE USE OF THIS RECORDED-DATA.

OTHER SERVICES1

- OS1: FMS
- OS2: DSI
- OS3: APS/HLDS
- OS4: DIT

REMARKS: RUN NUMBER 1

Logs run in second hole ("B" hole) of drilling site U1352 to aid in depth correlation of core data collected in surface labs.

Average heave during the run was only 0.2m; Active Heave Compensator not used.

TD was not reached – obstruction at 842mBRF – with the pipe (bit) at 436.6mBRF. Sea Bed given as 354.6mBRF.

Hole Size input taken from HLDS Caliper.

Tools run slick in order to fit through drill pipe, as is standard practice on this project.

HLDS Caliper closed at approximately 457.3mBRF to facility entry into drill pipe.

APS minitron deactivated at approximately 461.5mBRF.


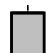
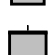
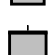

Depth "Zero" reference adjusted to Sea Bed picked by client.

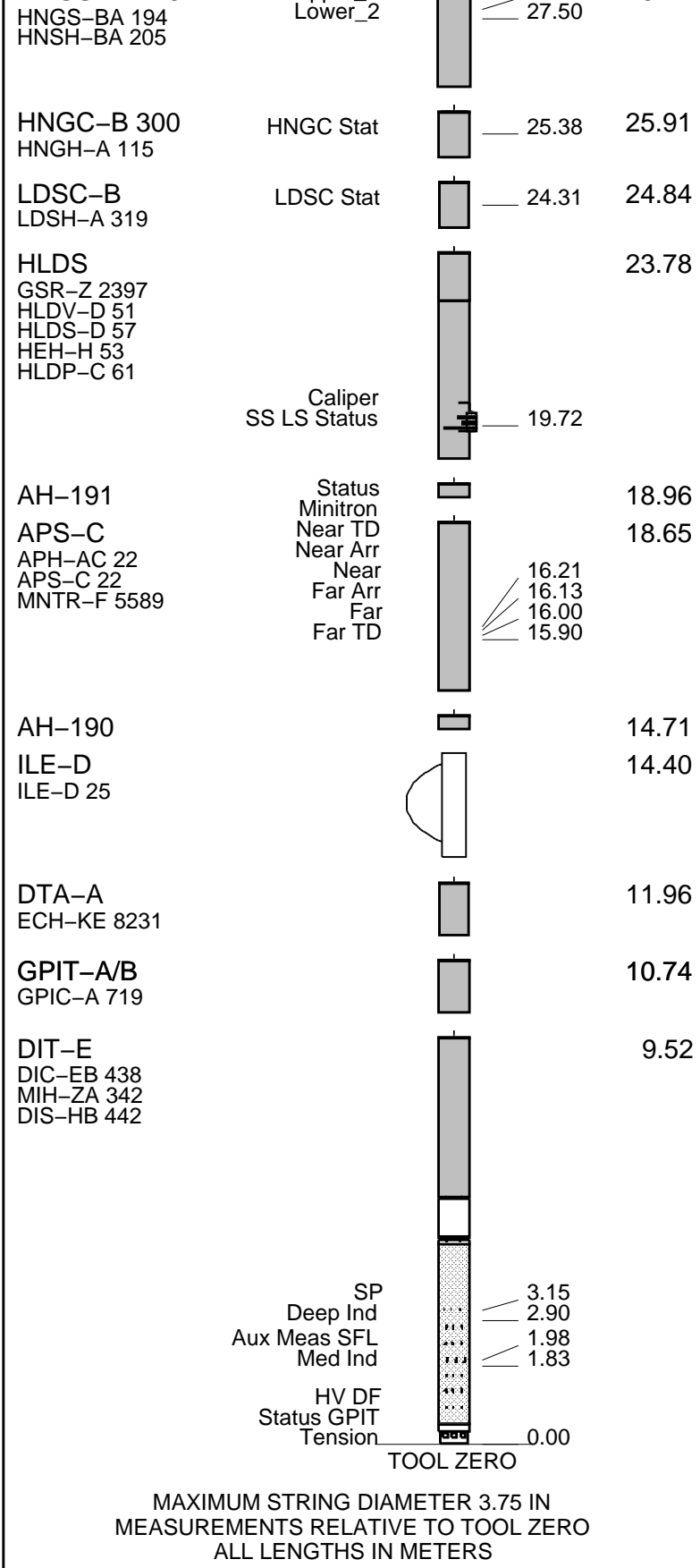
Depths shown are measured depth below sea floor, as per client request.

RUN 1			RUN 2		
SERVICE ORDER #: PROGRAM VERSION: FLUID LEVEL:			SERVICE ORDER #: PROGRAM VERSION: FLUID LEVEL:		
17C0-154					
LOGGED INTERVAL	START	STOP	LOGGED INTERVAL	START	STOP

EQUIPMENT DESCRIPTION

RUN 1	RUN 2
SURFACE EQUIPMENT	
SFT-281 2 SFT-178 2 GSR-U 616008 WITM (DTS)-A	

DOWNHOLE EQUIPMENT			
LEH-QT			30.21
LEH-QT 301			
DTC-H	CTEM		29.04
ECH-KC 2304	TelStatus		29.32
	ToolStatu		28.41
HNGS-BA 194	Upper 1		27.71
			28.41



Production String	(in)	(m)	Well Schematic	(m)	(in)	Casing String
	OP	ID		MD	MD	

Kelly Bushing Elevation

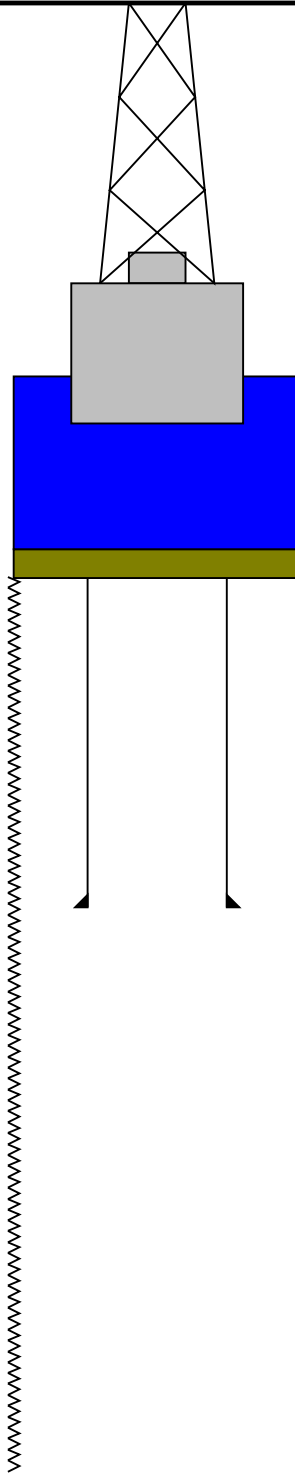
Derrick Floor Elevation

Mean Sea Level

0.0

0.0

11.0



354.6

436.6

1185.5

5.500

11.340

Sea Bed

Casing Shoe

Total Depth - Driller

Schlumberger

Main Pass

MAXIS Field Log

Input DLIS Files

DEFAULT	PI_APS_LDL_NGS_013LUP	FN:18	PRODUCER	06-Dec-2009 13:50	839.0 M	304.8 M
---------	-----------------------	-------	----------	-------------------	---------	---------

Output DLIS Files

DEFAULT	PI_APS_LDL_NGS_036PUP	FN:44	PRODUCER	31-Dec-2009 22:11	483.1 M	-50.7 M
---------	-----------------------	-------	----------	-------------------	---------	---------

OP System Version: 17C0-154

DIT-E	17C0-154	GPIT-A/B	SRPC-3870_Q3_2009_OP17_V3_b
DTA-A	17C0-154	APS-C	17C0-154
HLDS	17C0-154	LDSC-B	17C0-154
HNGC-B	17C0-154	HNGS-BA	17C0-154
DTC-H	17C0-154		

PIP SUMMARY

Time Mark Every 60 S

HNGS Spectroscopy Gamma Ray (HSGR)
(GAPI) 0 100

Area1
From HCGR to HSGR

HNGS Computed Gamma Ray (HCGR)
(GAPI) 0 100

HNGS Borehole Potassium (HBHK)
-0.05 (----) 0.05

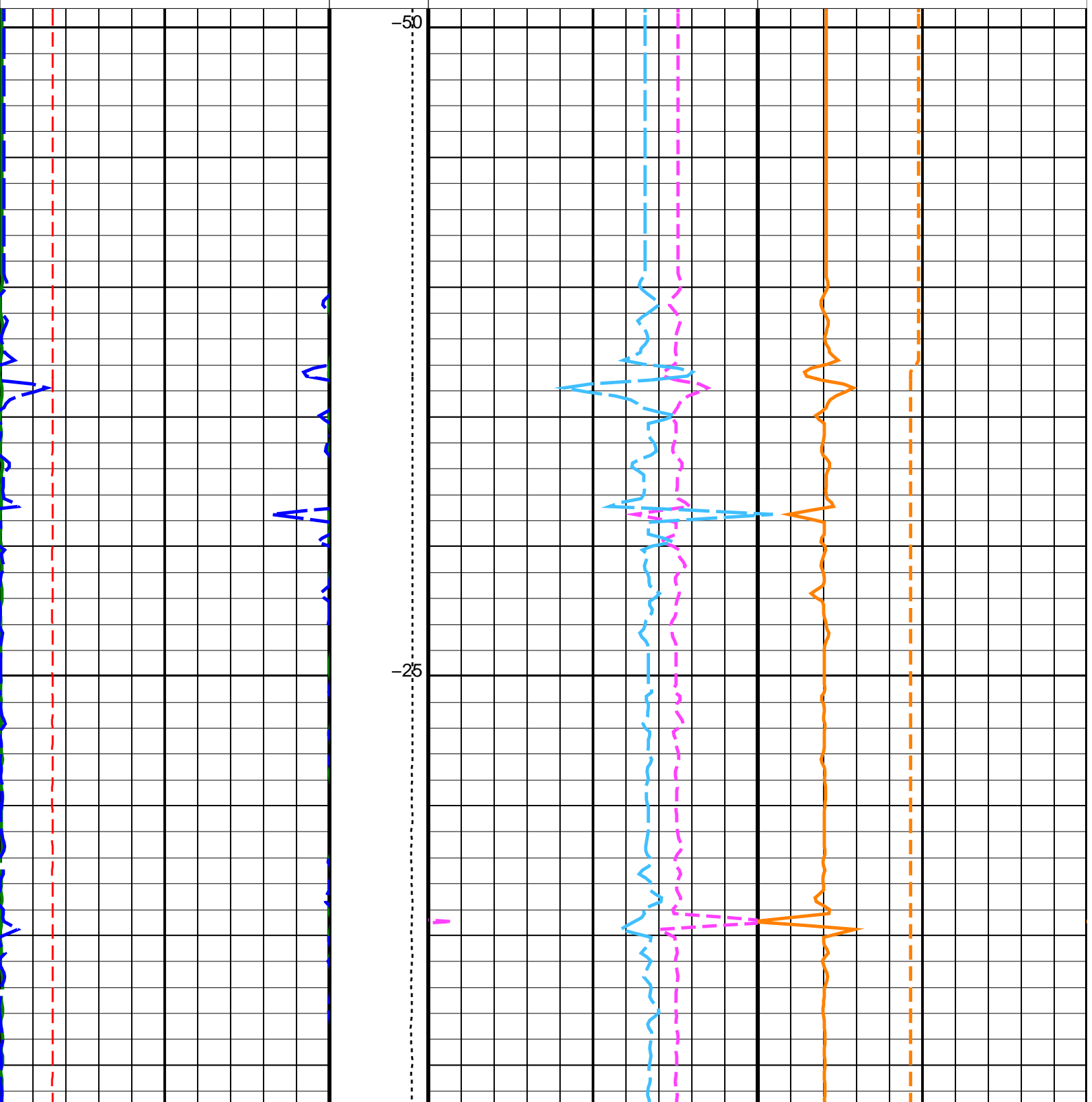
HNGS Uranium (HURA)
(PPM) -5 10

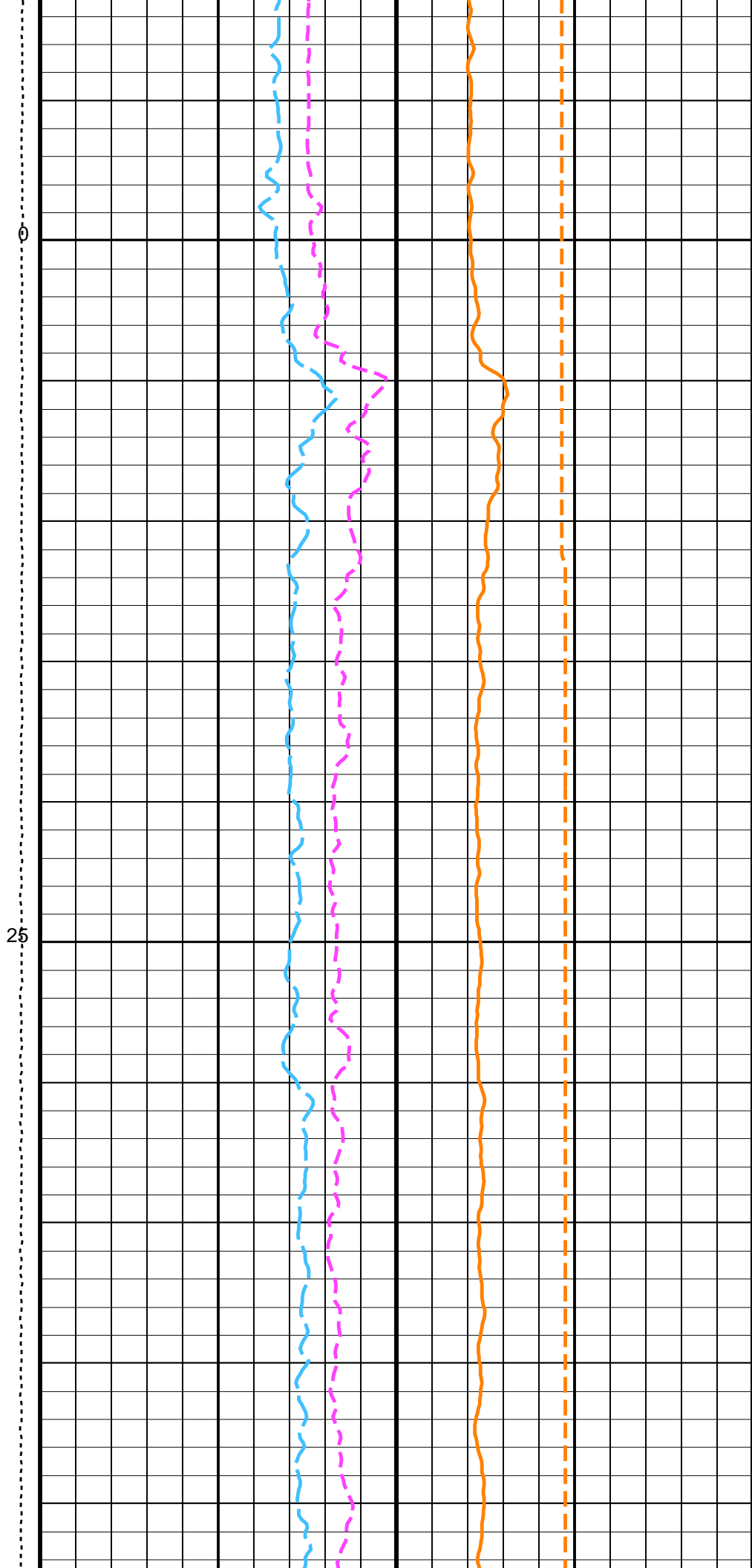
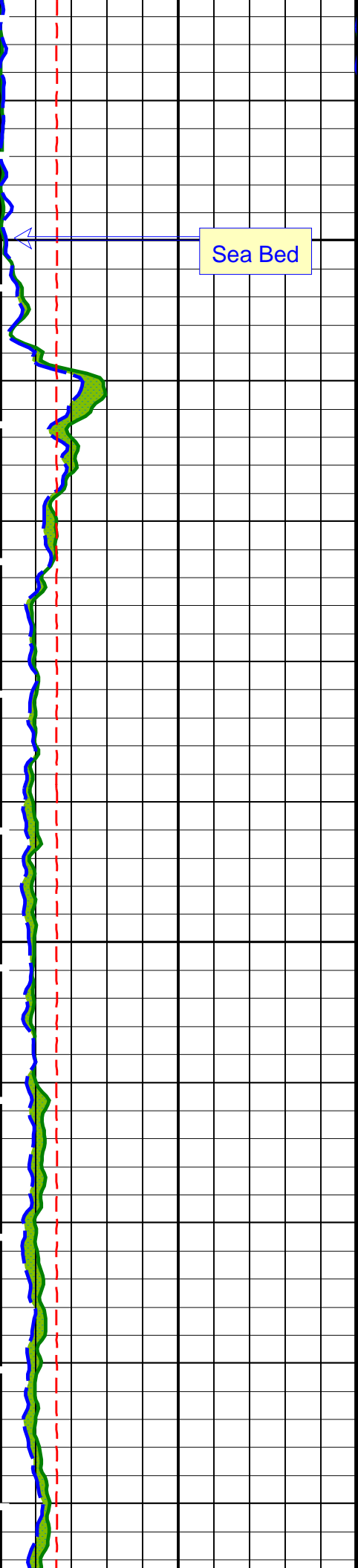
HLDS Caliper (LCAL)
(IN) 0 20

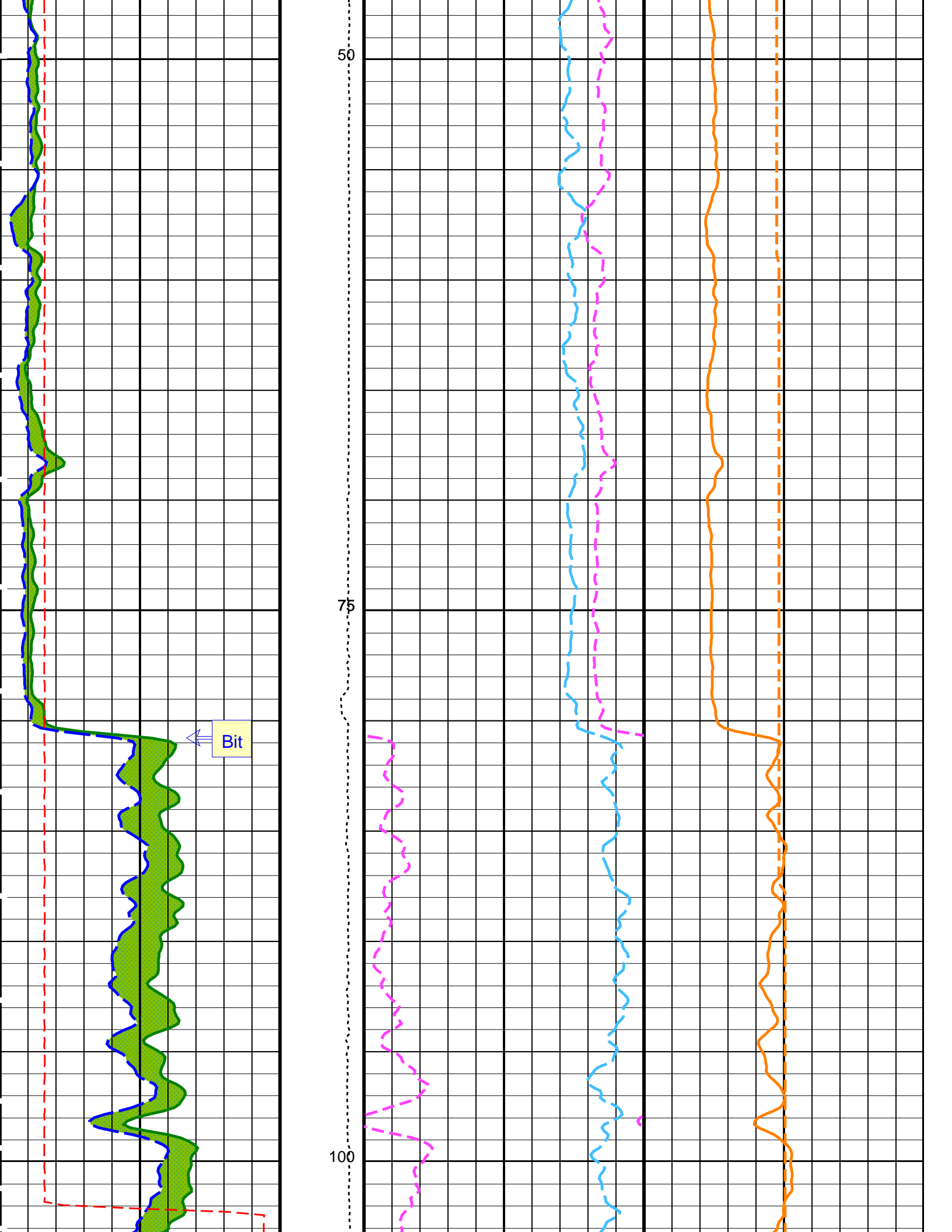
Tension
(TENS)
(LBF) 10000 0

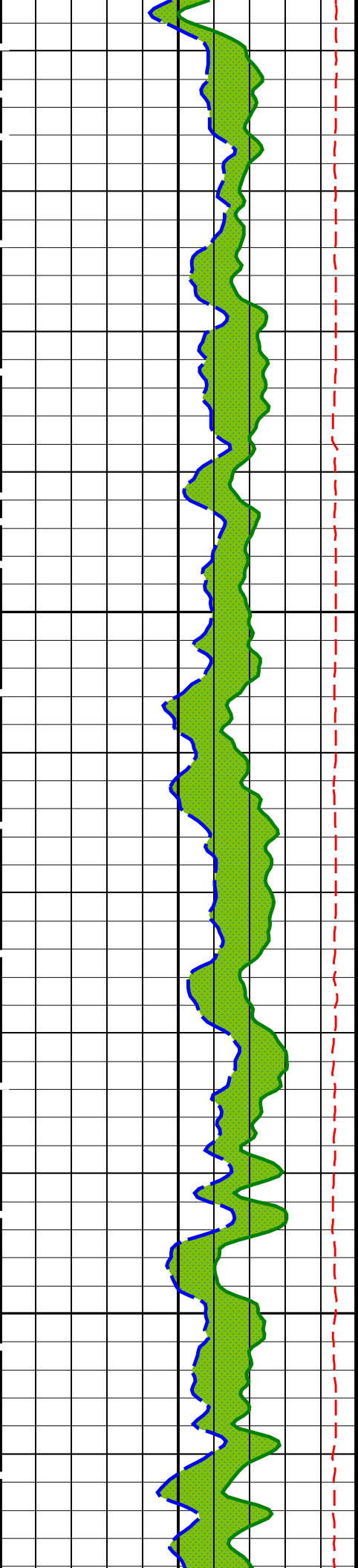
HNGS Thorium (HTHO)
(PPM) 5 25

HNGS Potassium (HFK)
-0.01 (----) 0.04



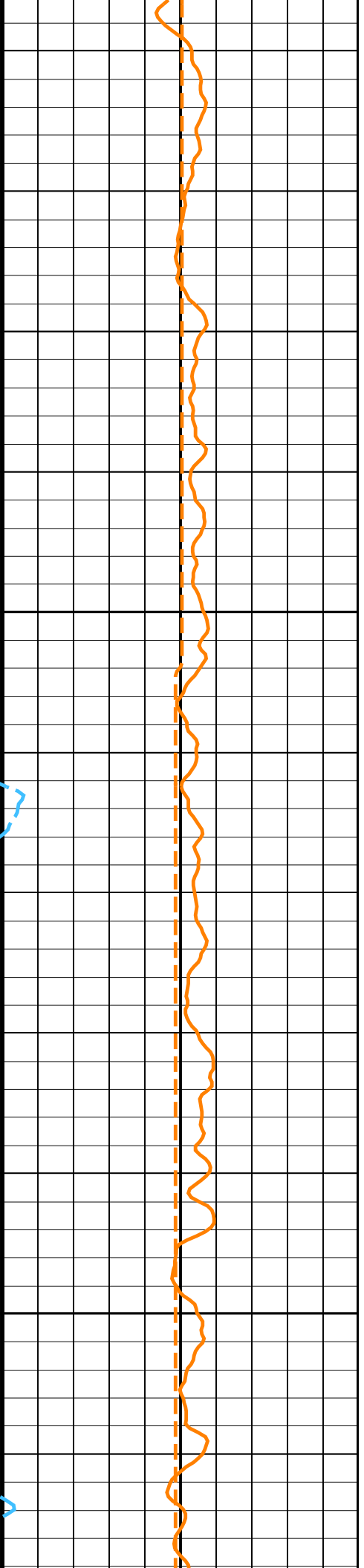
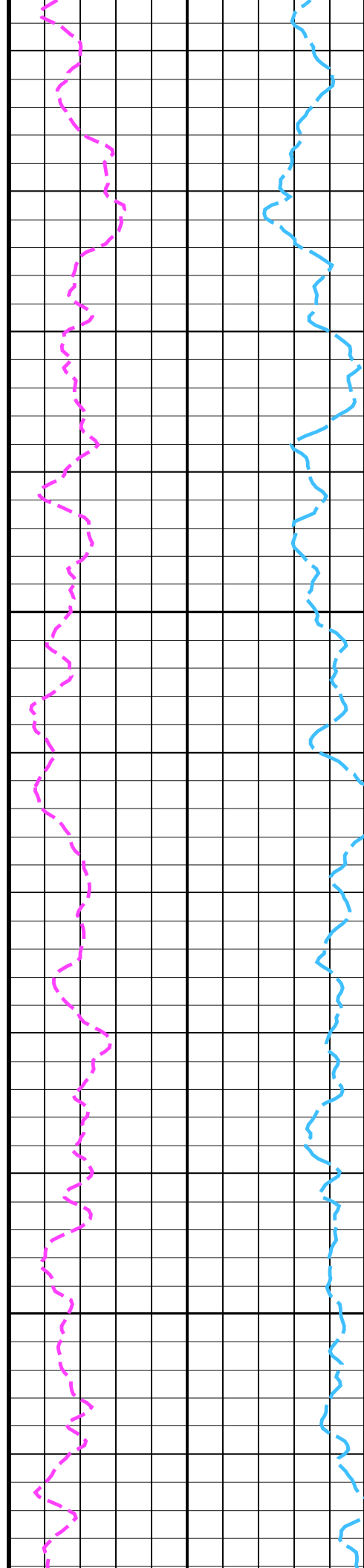


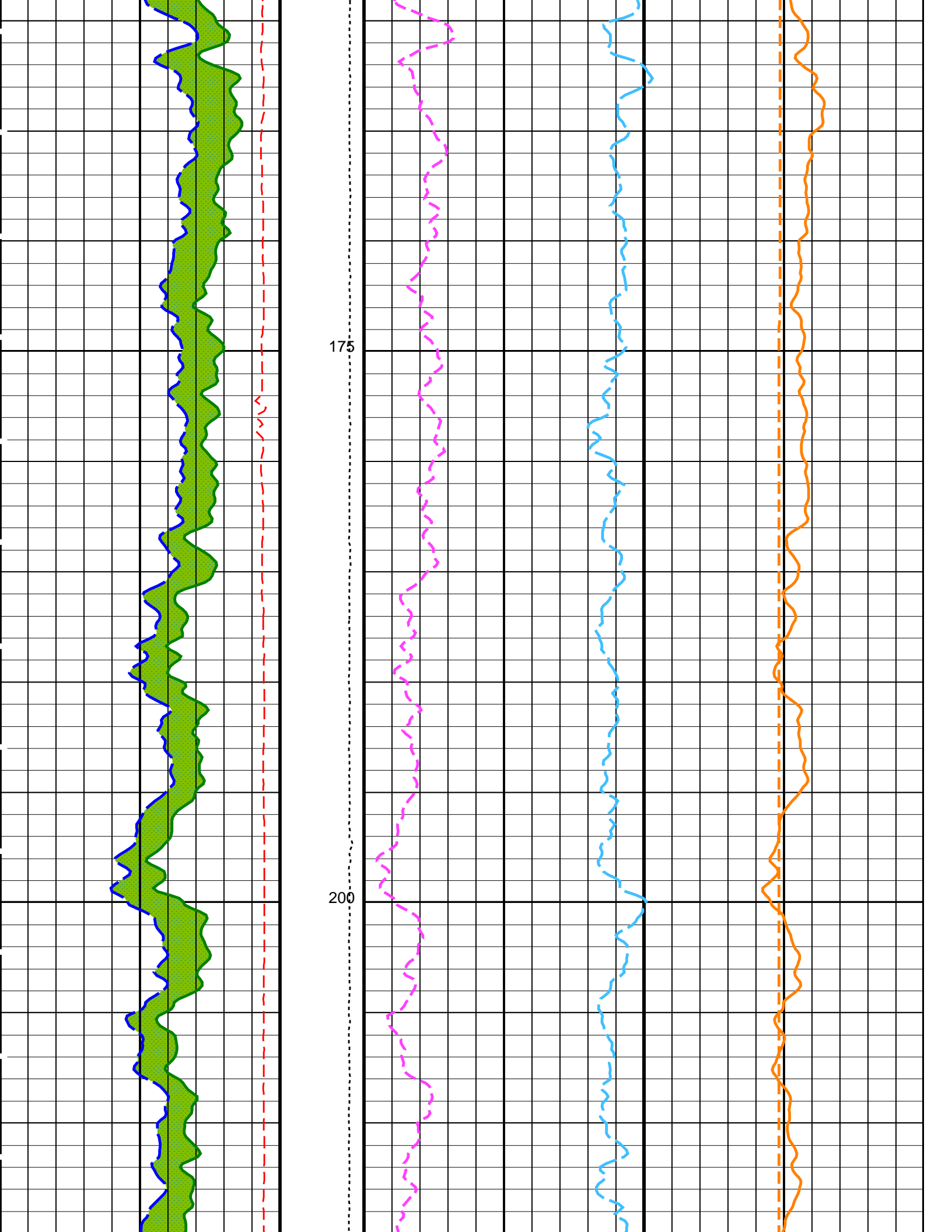


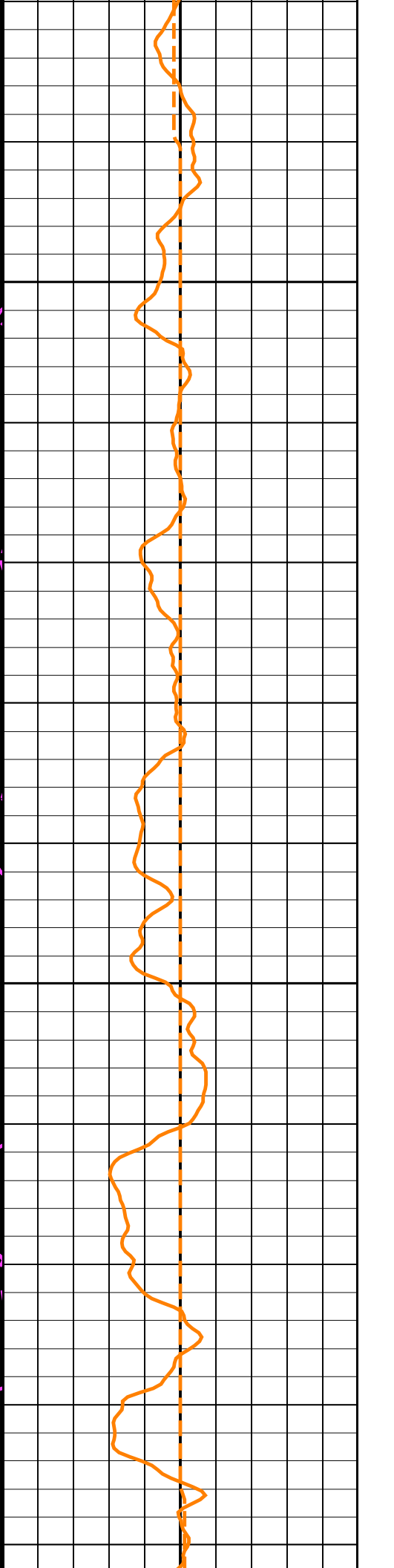
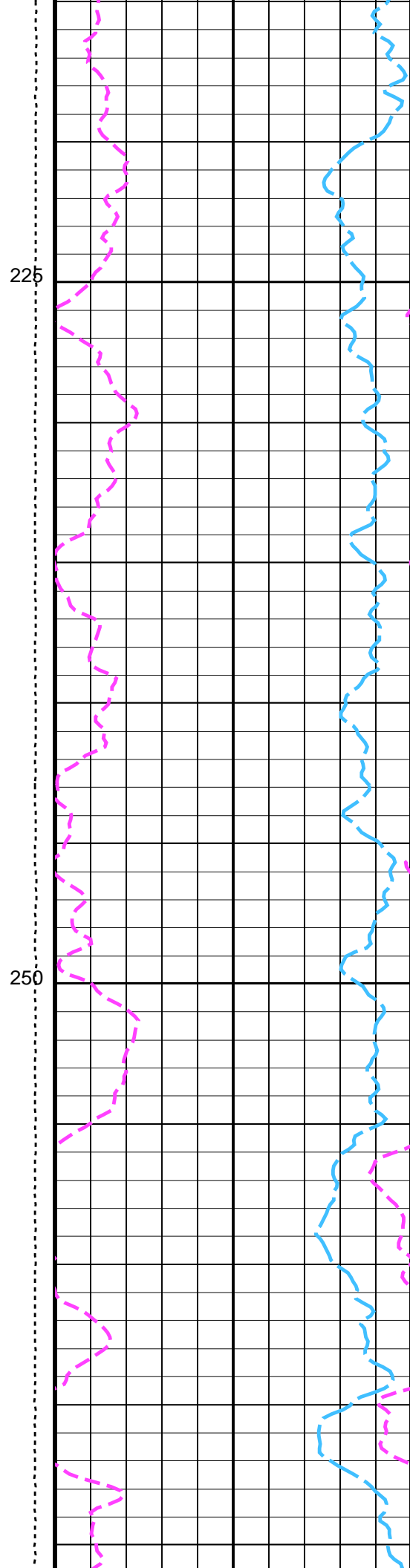
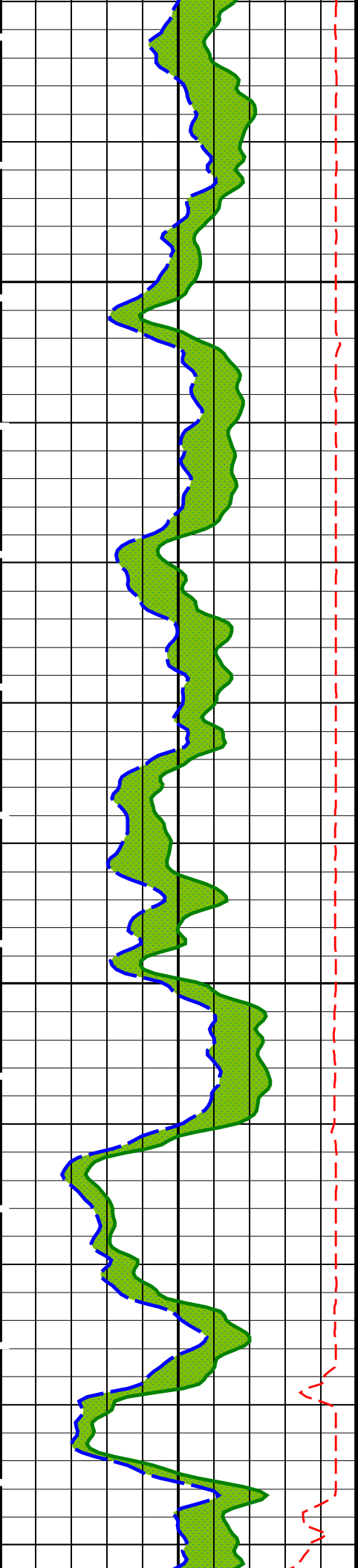


125

150

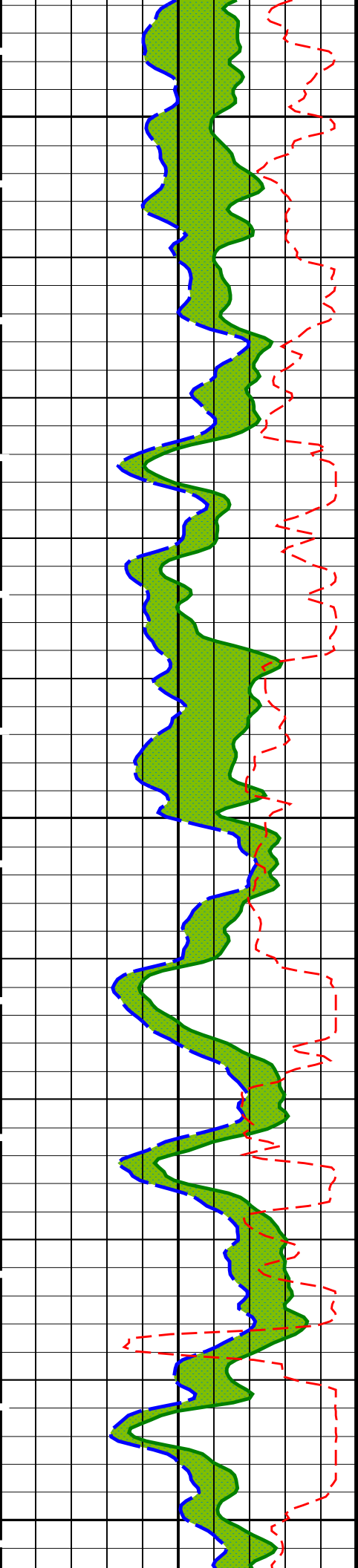






225

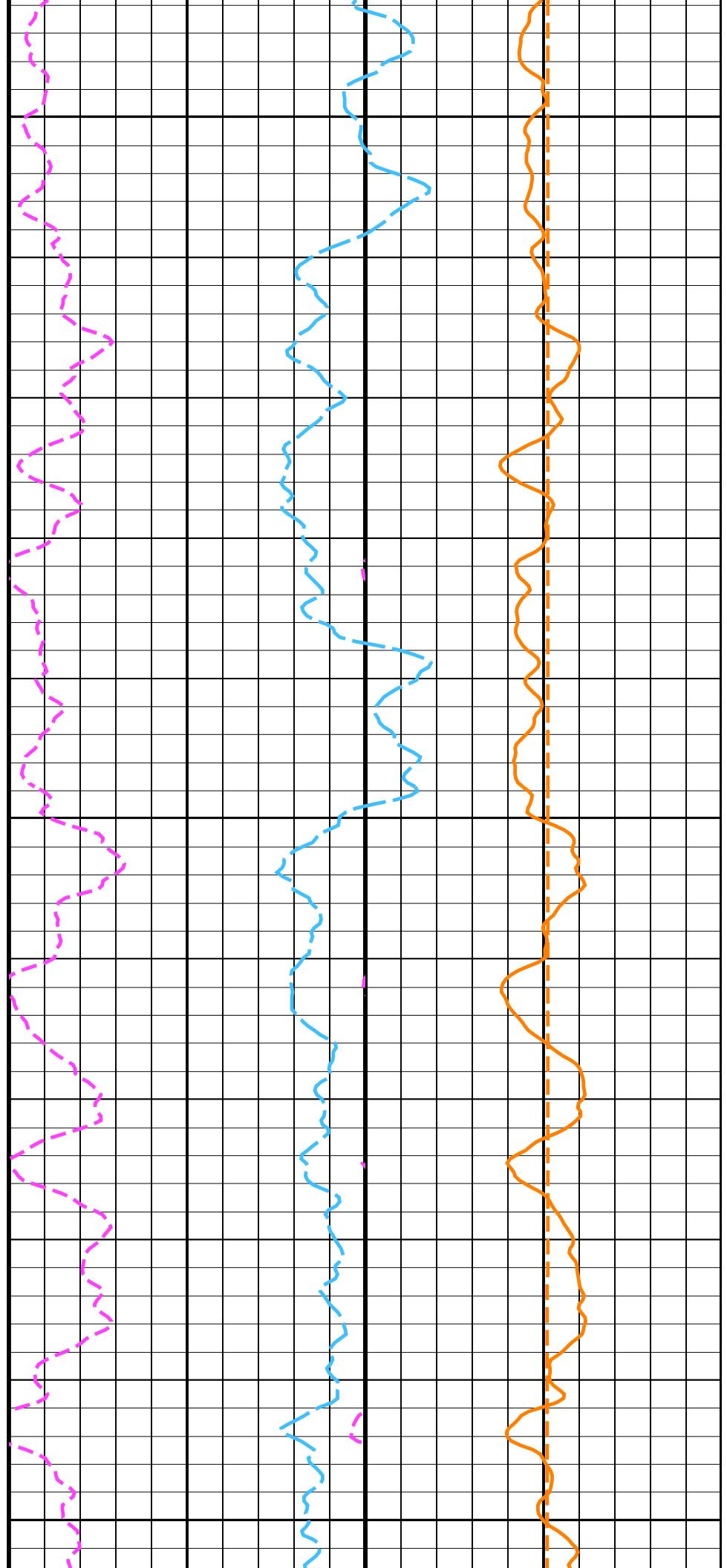
250

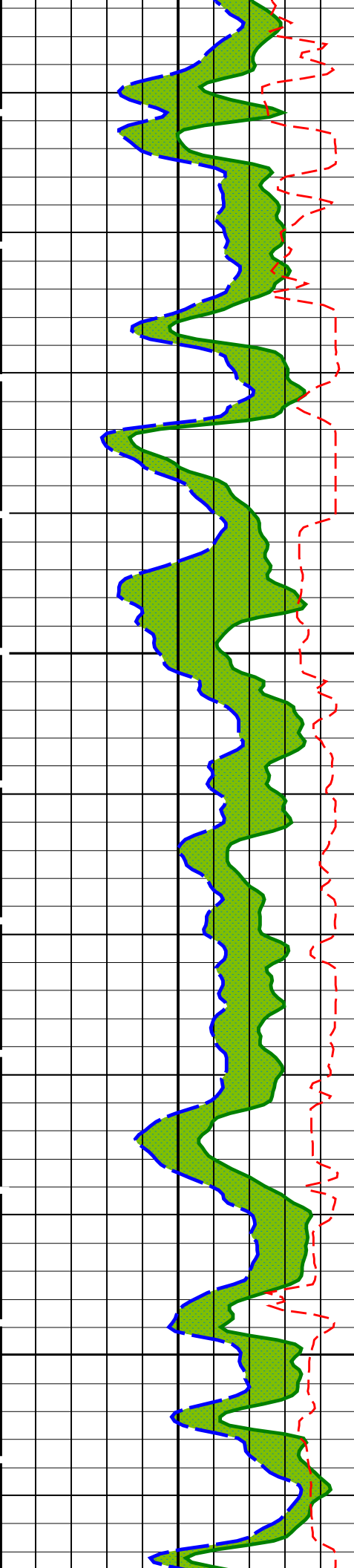


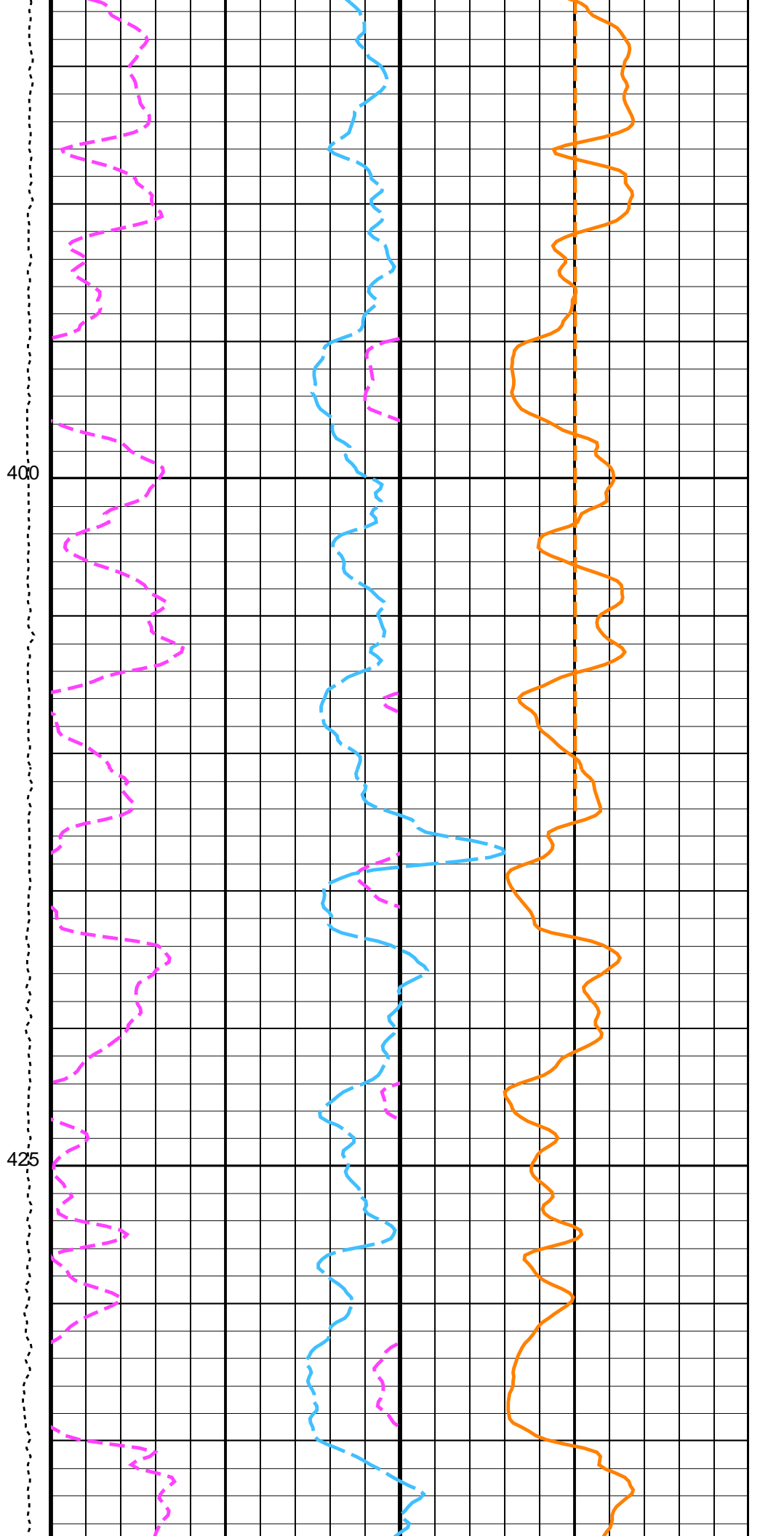
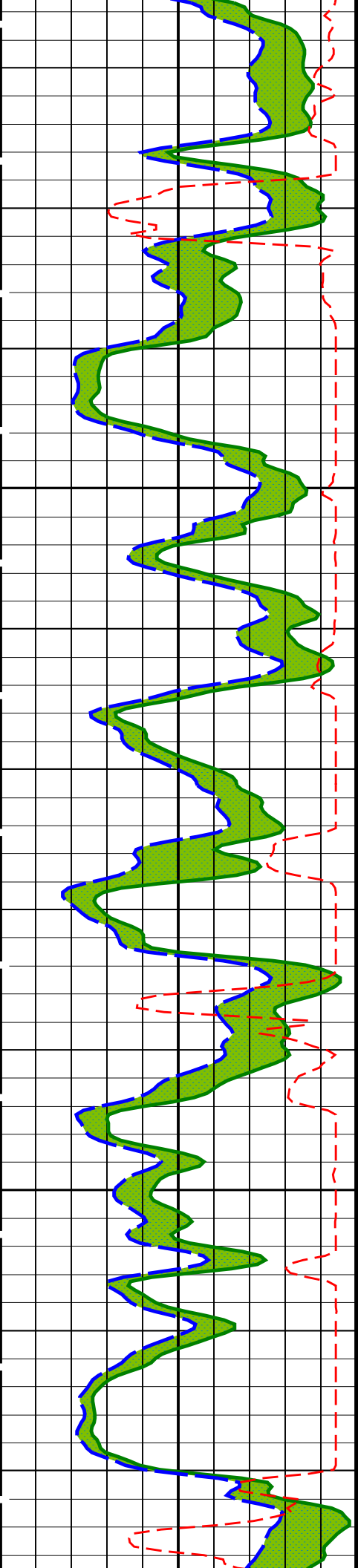
275

300

325

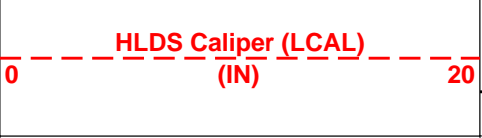
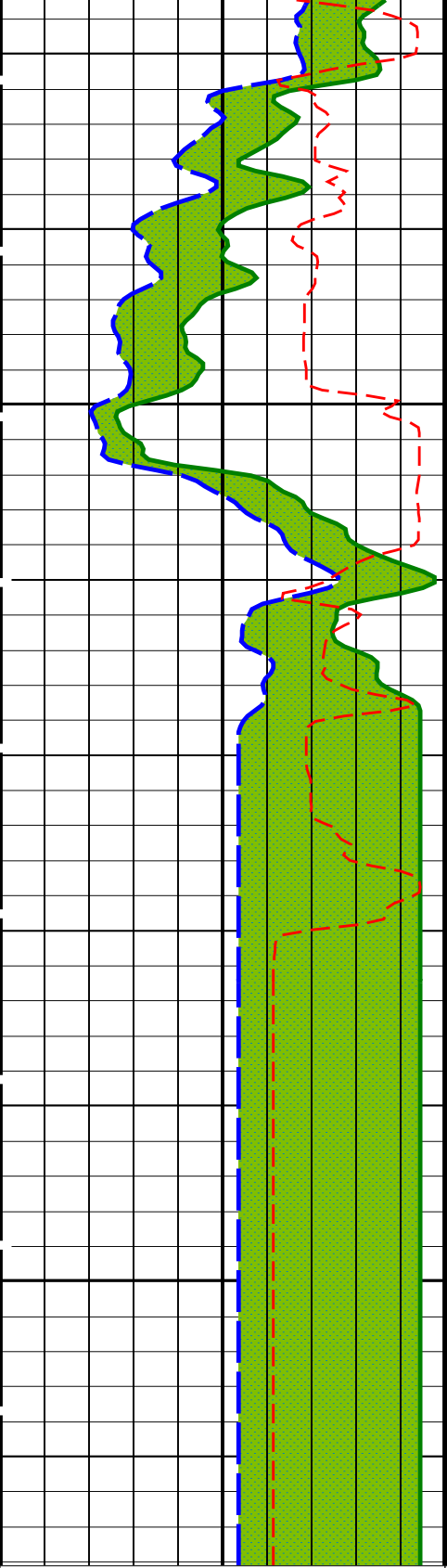




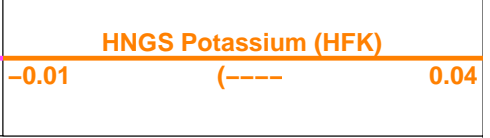
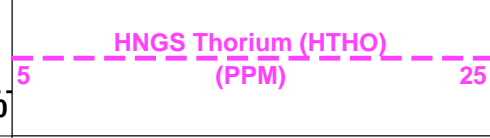
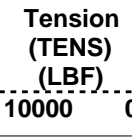
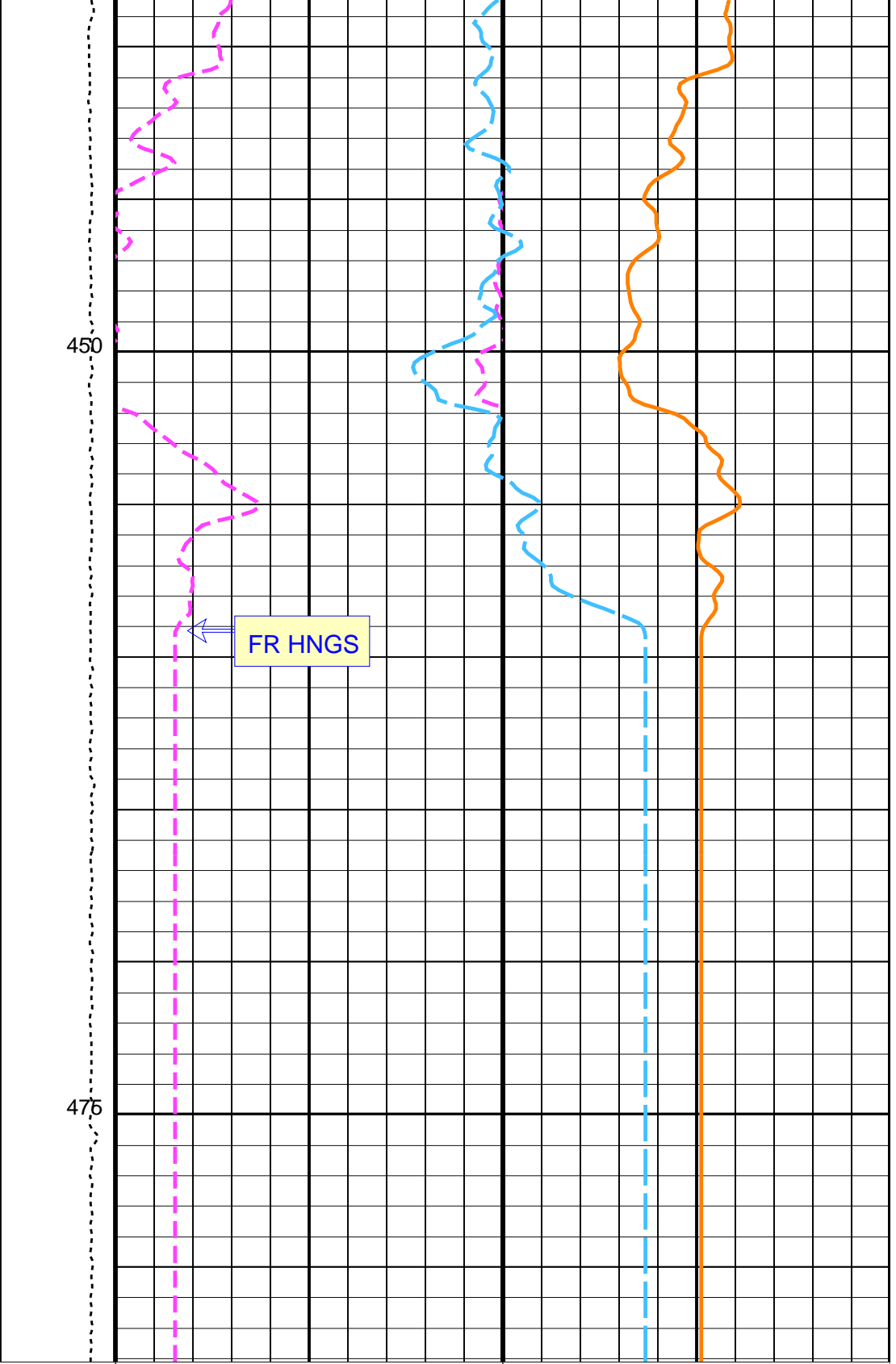
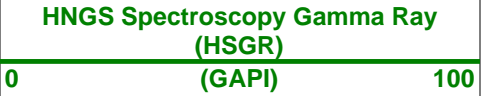


400

425



Area1
From HCGR to HSGR



Parameters

DLIS Name	Description	Value	
-----------	-------------	-------	--

DIT-E: Dual Induction - E

BHS	Borehole Status	OPEN	
BHT	Bottom Hole Temperature (used in calculations)	60	DEGF
DGF1	Deep 10 kHz Gain Factor	0.968036	
DGF2	Deep 20 kHz Gain Factor	0.981641	
DGF4	Deep 40 kHz Gain Factor	1.00354	
DPH1	Deep 10 kHz Phase Shift	0.519505	DEG
DPH2	Deep 20 kHz Phase Shift	0.58231	DEG
DPH4	Deep 40 kHz Phase Shift	-0.0231022	DEG
DRE1	Deep Real 10 kHz Sonde Error Correction	47.0269	MM/M
DRE2	Deep Real 20 kHz Sonde Error Correction	16.7871	MM/M
DRE4	Deep Real 40 kHz Sonde Error Correction	5.70109	MM/M
DRIM	DIT-E Radial Invasion Mode	Rxo>Rt	
DSR1	Deep Sigma Reference (10 kHz)	7637	MM/M
DSR2	Deep Sigma Reference (20 kHz)	1843	MM/M
DSR4	Deep Sigma Reference (40 kHz)	405	MM/M
DSTA	DIT-E Transversal Standoff	0	IN
DXE1	Deep Quad 10 kHz Sonde Error Correction	100.491	MM/M
DXE2	Deep Quad 20 kHz Sonde Error Correction	62.191	MM/M
DXE4	Deep Quad 40 kHz Sonde Error Correction	44.6702	MM/M
GCSE	Generalized Caliper Selection	BS	
GDEV	Average Angular Deviation of Borehole from Normal	0	DEG
GRGD	Geothermal Gradient	0.01	DF/F
GRSE	Generalized Mud Resistivity Selection	CHART_GEN 9	
GTSE	Generalized Temperature Selection	LINEAR_ESTIMATE	
IFRS	DIT-E Induction Frequency Selector	20	
IPHA	DIT-E Phasor Processing Mode	ALL	
IPRO	DIT-E Induction Processing Selector	PHASOR	
ISSBAR	Barite Mud Switch	NOBARITE	
ITEN	DIT-E Temperature Enable	ENABLE	
MATR	Rock Matrix for Neutron Porosity Corrections	LIMESTONE	
MGF1	Medium 10 kHz Gain Factor	1.00192	
MGF2	Medium 20 kHz Gain Factor	1.01122	
MGF4	Medium 40 kHz Gain Factor	1.04786	
MPH1	Medium 10 kHz Phase Shift	0.190245	DEG
MPH2	Medium 20 kHz Phase Shift	-0.139176	DEG
MPH4	Medium 40 kHz Phase Shift	-1.01614	DEG
MRE1	Medium Real 10 kHz Sonde Error Correction	17.1122	MM/M
MRE2	Medium Real 20 kHz Sonde Error Correction	-2.07993	MM/M
MRE4	Medium Real 40 kHz Sonde Error Correction	-9.895	MM/M
MSR1	Medium Sigma Reference (10 kHz)	13520	MM/M
MSR2	Medium Sigma Reference (20 kHz)	3250	MM/M
MSR4	Medium Sigma Reference (40 kHz)	685	MM/M
MXE1	Medium Quad 10 kHz Sonde Error Correction	-94.7355	MM/M
MXE2	Medium Quad 20 kHz Sonde Error Correction	-32.0861	MM/M
MXE4	Medium Quad 40 kHz Sonde Error Correction	12.9006	MM/M
SBR	Shoulder Bed Resistivity Factor	1	OHMM
SFCR	SFL Channel Ratio	1000	
SFLE	SFL Enable	ENABLE	
SHT	Surface Hole Temperature	68	DEGF
SPAE	DIT-E SPARC Processing Enable	ENABLE	
SPNV	SP Next Value	0	MV

GPIT-A/B: General Purpose Inclinerometer

ACPP	Accelerometer PROM Presence	PRESENT	
AFMO	Accelerometer Filtering Mode	MOVING_AVERAGE	
ART	Accelerometer Reference Temperature	20	DEGC
GLM	GPIT Logging Mode	DIPM	
ICMO	Inclinometry Computation Mode	AUTOMATIC_SELECTION	
MAPP	Magnetometer PROM Presence	PRESENT	
MDEC	Magnetic Field Declination	24.4701	DEG
MRTE	Magneto Reference Temperature	19	DEGC
TEMS	GPIT Temperature Sensor Used	BOTH	
U-GPOF	Playback OLD VERSION GPIT FILE (BEFORE OP14 + SRPC-3098-FEB_2006_C) ?	NO	

APS-C: Accelerator-Porosity Tool

AASD	APS Software Version	0	
ADSO	APS Thermal and Array Detectors High Voltage Setting	1965.28	V
AFSD	APS Array Detectors Data Source Switch	Both	
AHCS	APS Far Detector High Voltage Setting	2077.04	V
AHSS	APS Holesize Correction Source	BS	
AMTY	APS Holesize Correction Switch	ON	
ANSD	APS Environmental Corrections Mud Type	WaterBaseBarite	
ASOS	APS Near Detector High Voltage Setting	1734.68	V
ATSS	APS Standoff Correction Switch	ON	
	APS Temperature-Pressure-Salinity Correction Switch	ON	

BHFL_APS	Borehole Status	OPEN	
BHS	Borehole Status	OPEN	
BHT	Bottom Hole Temperature (used in calculations)	60	DEGF
BSCO_APS	APS TNPH Borehole Salinity Correction Option	YES	
DPPM	Density Porosity Processing Mode	HIRS	
DSCO_APS	APS TNPH Density Source	COMPUTED	
FSAL	Formation Salinity	-50000	PPM
FSCO_APS	APS TNPH Formation Salinity Correction Option	NO	
GCSE	Generalized Caliper Selection	BS	
GDEV	Average Angular Deviation of Borehole from Normal	0	DEG
GGRD	Geothermal Gradient	0.01	DF/F
GRSE	Generalized Mud Resistivity Selection	CHART_GEN_9	
GTSE	Generalized Temperature Selection	LINEAR_ESTIMATE	
HSCO_APS	APS TNPH Hole Size Correction Option	YES	
ISSBAR	Barite Mud Switch	NOBARITE	
MATR	Rock Matrix for Neutron Porosity Corrections	LIMESTONE	
MCCO_APS	APS TNPH Mud Cake Correction Option	YES	
MCOR_APS	APS TNPH Mud Correction	NATU	
MWCO_APS	APS TNPH Mud Weight Correction Option	YES	
NARC	APS Near/Array Calibration Ratio	1.05996	
NFRC	APS Near/Far Calibration Ratio	0.890086	
PTCO_APS	APS TNPH Pressure/Temperature Correction Option	YES	
SHT	Surface Hole Temperature	68	DEGF
TNCO_APS	APS TNPH Computation Option	NO	
HLDS: Hostile Litho-Density Sonde			
CLCL	HLDS LS Control Loop Controller Mode	AUTO_DEFAULT	
CLCS	HLDS SS Control Loop Controller Mode	AUTO_DEFAULT	
CLLS	HLDS Mode Loop Long Spacing	AUTO	
CLSS	HLDS Mode Loop Short Spacing	AUTO	
DHC	Density Hole Correction	BS	
DPPM	Density Porosity Processing Mode	HIRS	
FD	Fluid Density	1	G/C3
LATC	HLDS Activation Correction	OFF	
LLDL	HLDS LS Low Level Discriminator DAC	14000	
LLDS	HLDS SS Low Level Discriminator DAC	14000	
LLML	HLDS LS Low Level Discriminator Mode	AUTO	
LLMS	HLDS SS Low Level Discriminator Mode	AUTO	
MDEN	Matrix Density	2.71	G/C3
PHVL	HLDS Long Spacing High Voltage Setting	1000	V
PHVS	HLDS Short Spacing High Voltage Setting	1000	V
PSDL	HLDS LS Pulse Shape Compensation DAC	30000	
PSDS	HLDS SS Pulse Shape Compensation DAC	30000	
PSML	HLDS LS Pulse Shape Compensation Mode	AUTO	
PSMS	HLDS SS Pulse Shape Compensation Mode	AUTO	
HNGBS-BA: Hostile Natural Gamma Ray Sonde			
BAR1	HNGBS Detector 1 Barite Constant	1	
BAR2	HNGBS Detector 2 Barite Constant	1	
BHK	HNGBS Borehole Potassium Correction Concentration	0	
BHS	Borehole Status	OPEN	
BHT	Bottom Hole Temperature (used in calculations)	60	DEGF
CSD1	Inner Casing Outer Diameter	0	IN
CSD2	Outer Casing Outer Diameter	0	IN
CSW1	Inner Casing Weight	0	LB/F
CSW2	Outer Casing Weight	0	LB/F
DBCC	HNGBS Barite Constant Correction Flag	NONE	
GCSE	Generalized Caliper Selection	BS	
GDEV	Average Angular Deviation of Borehole from Normal	0	DEG
GGRD	Geothermal Gradient	0.01	DF/F
GRSE	Generalized Mud Resistivity Selection	CHART_GEN_9	
GTSE	Generalized Temperature Selection	LINEAR_ESTIMATE	
H1P	HNGBS Detector 1 Allow/Disallow In Processing	ALLOW	
H2P	HNGBS Detector 2 Allow/Disallow In Processing	ALLOW	
HABK	HNGBS Borehole Potassium Running Average	0.000225953	
HALF	HNGBS Alpha Filter Length	60	IN
HCRB	HNGBS Apply Borehole Potassium Correction	NONE	
HMWM	Mud Weighting Material	BARI	
HNPE	HNGBS Processing Enable	YES	
ISSBAR	Barite Mud Switch	NOBARITE	
MATR	Rock Matrix for Neutron Porosity Corrections	LIMESTONE	
S1BI	HNGBS Detector 1 Calibration Bismuth Count Rate	1.3	CPS
S2BI	HNGBS Detector 2 Calibration Bismuth Count Rate	1.3	CPS
SGRC	HNGBS Standard Gamma-Ray Correction Flag	YES	
SHT	Surface Hole Temperature	68	DEGF
TPOS	Tool Position	ECCE	
VBA1	HNGBS Detector 1 Variable Barite Factor Running Average	1.01133	
VBA2	HNGBS Detector 2 Variable Barite Factor Running Average	1.00087	
DIR: Directional Survey Computation			
SPED	East Departure of Starting Point	0	M
SPND	North Departure of Starting Point	0	M
SPVD	TVD of Starting Point	0	M
TAZI	Vertical Section Azimuth	0	DEG
TIED	East Departure of Tie-in Point	0	M
TIMD	Along-hole depth of Tie-in Point	0	M
TIND	North Departure of Tie-in Point	0	M
TIVD	TVD of Tie-in Point	0	M

System and Miscellaneous			
ALTDPCCHAN	Name of alternate depth channel	SpeedCorrectedDepth	
BS	Bit Size	11.438	IN
BSAL	Borehole Salinity	-50000.00	PPM
CSIZ	Current Casing Size	4.500	IN
CWEI	Casing Weight	0.00	LB/F
DFD	Drilling Fluid Density	1.02	G/C3
DO	Depth Offset for Playback	-355.5	M
FLEV	Fluid Level	-50000.00	M
MST	Mud Sample Temperature	-50000.00	DEGC
PBVSADP	Use alternate depth channel for playback	NO	
PP	Playback Processing	NORMAL	
RMFS	Resistivity of Mud Filtrate Sample	-50000.0000	OHMM
RW	Resistivity of Connate Water	1.0000	OHMM
TD	Total Depth	2750.9	M
TDD	Total Depth - Driller	830.00	M
TDL	Total Depth - Logger	486.50	M
TWS	Temperature of Connate Water Sample	37.78	DEGC

Format: HNGSYields Vertical Scale: 1:200 Graphics File Created: 31-Dec-2009 22:11

OP System Version: 17C0-154

DIT-E	17C0-154	GPIT-A/B	SRPC-3870_Q3_2009_OP17_V3_b
DTA-A	17C0-154	APS-C	17C0-154
HLDS	17C0-154	LDSC-B	17C0-154
HNGC-B	17C0-154	HNGS-BA	17C0-154
DTC-H	17C0-154		

Input DLIS Files

DEFAULT	PI_APS_LDL_NGS_013LUP	FN:18	PRODUCER	06-Dec-2009 13:50	839.0 M	304.8 M
---------	-----------------------	-------	----------	-------------------	---------	---------

Output DLIS Files

DEFAULT	PI_APS_LDL_NGS_036PUP	FN:44	PRODUCER	31-Dec-2009 22:11		
---------	-----------------------	-------	----------	-------------------	--	--



Repeat Pass

MAXIS Field Log

Input DLIS Files

DEFAULT	PI_APS_LDL_NGS_012LUP	FN:16	PRODUCER	06-Dec-2009 13:50	841.2 M	740.8 M
---------	-----------------------	-------	----------	-------------------	---------	---------

Output DLIS Files

DEFAULT	PI_APS_LDL_NGS_038PUP	FN:46	PRODUCER	31-Dec-2009 22:20	485.4 M	385.3 M
---------	-----------------------	-------	----------	-------------------	---------	---------

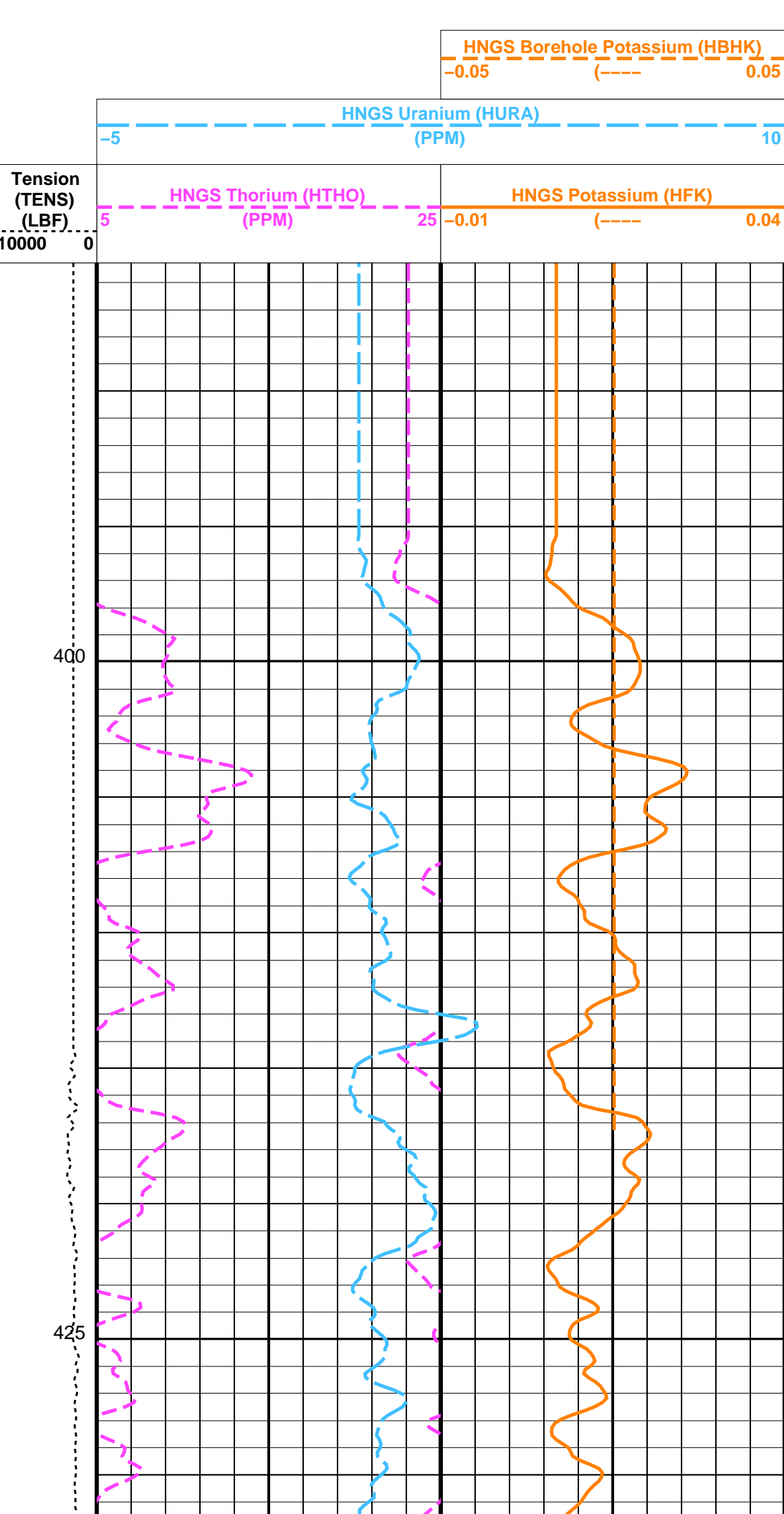
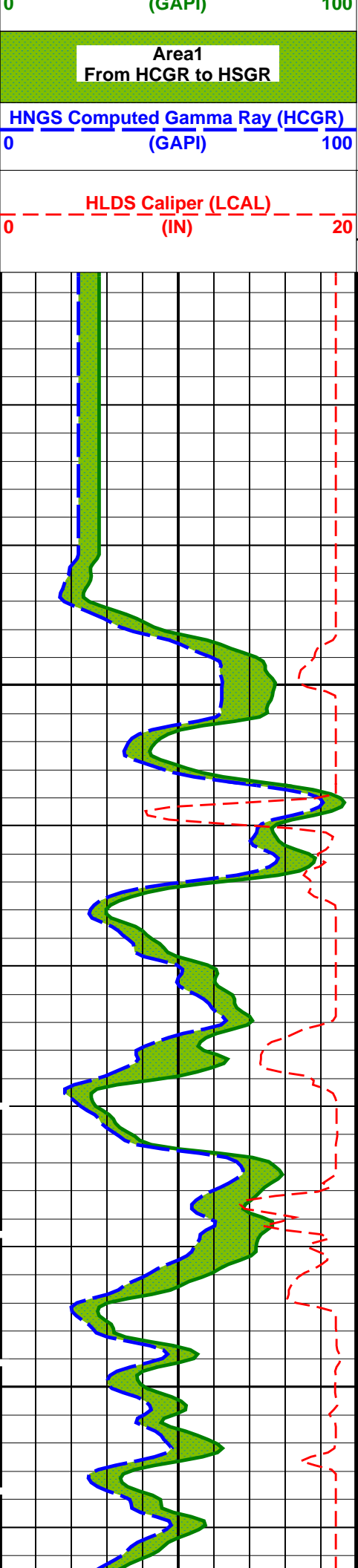
OP System Version: 17C0-154

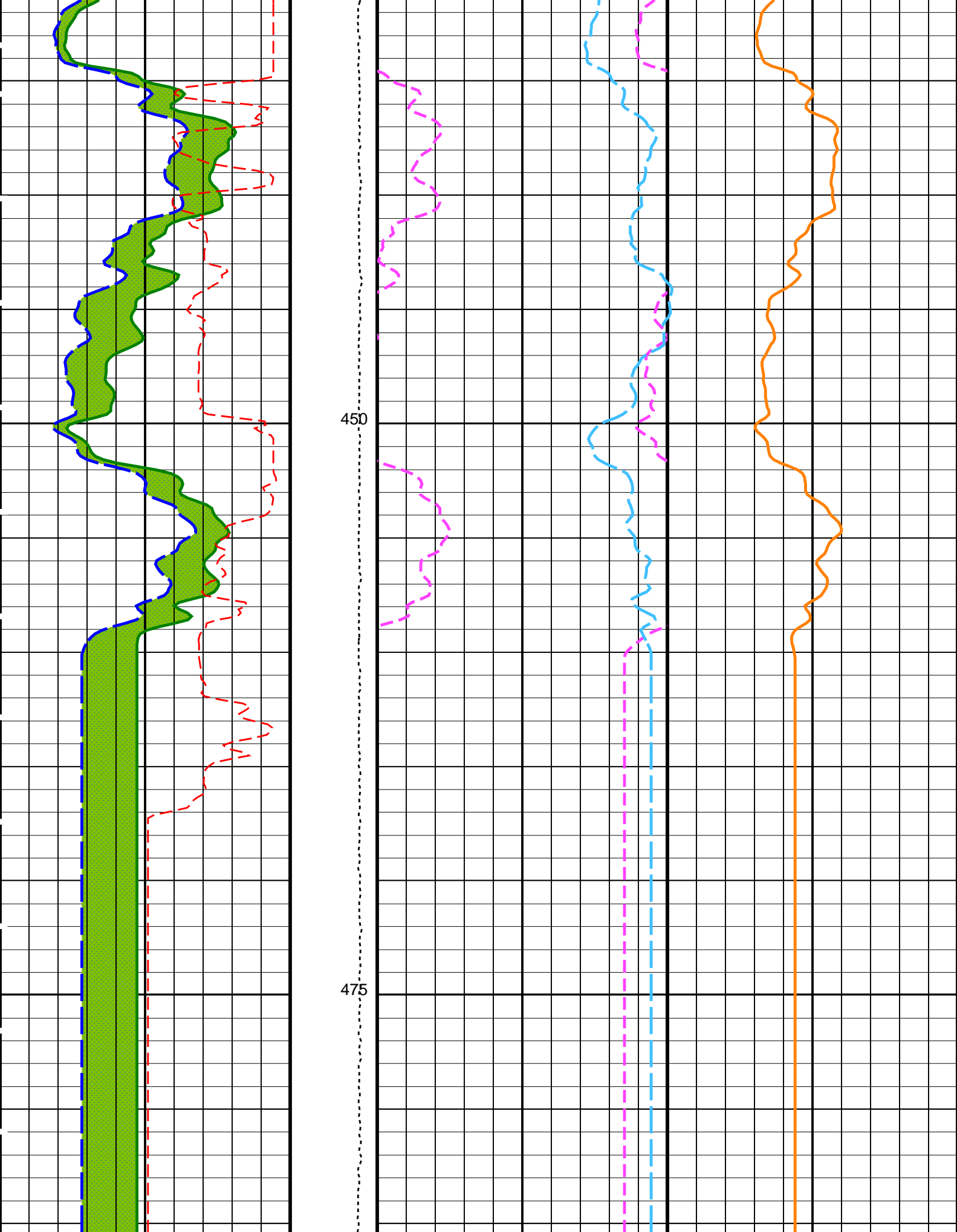
DIT-E	17C0-154	GPIT-A/B	SRPC-3870_Q3_2009_OP17_V3_b
DTA-A	17C0-154	APS-C	17C0-154
HLDS	17C0-154	LDSC-B	17C0-154
HNGC-B	17C0-154	HNGS-BA	17C0-154
DTC-H	17C0-154		

PIP SUMMARY

Time Mark Every 60 S

HNGS Spectroscopy Gamma Ray (HSGR)





HLDS Caliper (LCAL)

Tension (TENS) (PSI)

HNGS Thorium (HTHO)

HNGS Potassium (HFK)

(IN)	20	(LBF)	5	(PPM)	25	-0.01	(----	0.04
HNGS Computed Gamma Ray (HCGR)			HNGS Uranium (HURA)					
0	(GAPI)	100	-5		(PPM)			10
Area1 From HCGR to HSGR			HNGS Borehole Potassium (HBHK)					
			-0.05		(----			0.05
HNGS Spectroscopy Gamma Ray (HSGR)								
0	(GAPI)	100						

PIP SUMMARY

Time Mark Every 60 S

Parameters

DLIS Name	Description	Value	
DIT-E: Dual Induction - E			
BHS	Borehole Status	OPEN	
BHT	Bottom Hole Temperature (used in calculations)	60	DEGF
DGF1	Deep 10 kHz Gain Factor	0.968036	
DGF2	Deep 20 kHz Gain Factor	0.981641	
DGF4	Deep 40 kHz Gain Factor	1.00354	
DPH1	Deep 10 kHz Phase Shift	0.519505	DEG
DPH2	Deep 20 kHz Phase Shift	0.58231	DEG
DPH4	Deep 40 kHz Phase Shift	-0.0231022	DEG
DRE1	Deep Real 10 kHz Sonde Error Correction	47.0269	MM/M
DRE2	Deep Real 20 kHz Sonde Error Correction	16.7871	MM/M
DRE4	Deep Real 40 kHz Sonde Error Correction	5.70109	MM/M
DRIM	DIT-E Radial Invasion Mode	Rxo>Rt	
DSR1	Deep Sigma Reference (10 kHz)	7637	MM/M
DSR2	Deep Sigma Reference (20 kHz)	1843	MM/M
DSR4	Deep Sigma Reference (40 kHz)	405	MM/M
DSTA	DIT-E Transversal Standoff	0	IN
DXE1	Deep Quad 10 kHz Sonde Error Correction	100.491	MM/M
DXE2	Deep Quad 20 kHz Sonde Error Correction	62.191	MM/M
DXE4	Deep Quad 40 kHz Sonde Error Correction	44.6702	MM/M
GCSE	Generalized Caliper Selection	BS	
GDEV	Average Angular Deviation of Borehole from Normal	0	DEG
GRGD	Geothermal Gradient	0.01	DF/F
GRSE	Generalized Mud Resistivity Selection	CHART_GEN 9	
GTSE	Generalized Temperature Selection	LINEAR_ESTIMATE	
IFRS	DIT-E Induction Frequency Selector	20	
IPHA	DIT-E Phasor Processing Mode	ALL	
IPRO	DIT-E Induction Processing Selector	PHASOR	
ISSBAR	Barite Mud Switch	NOBARITE	
ITEN	DIT-E Temperature Enable	ENABLE	
MATR	Rock Matrix for Neutron Porosity Corrections	LIMESTONE	
MGF1	Medium 10 kHz Gain Factor	1.00192	
MGF2	Medium 20 kHz Gain Factor	1.01122	
MGF4	Medium 40 kHz Gain Factor	1.04786	
MPH1	Medium 10 kHz Phase Shift	0.190245	DEG
MPH2	Medium 20 kHz Phase Shift	-0.139176	DEG
MPH4	Medium 40 kHz Phase Shift	-1.01614	DEG
MRE1	Medium Real 10 kHz Sonde Error Correction	17.1122	MM/M
MRE2	Medium Real 20 kHz Sonde Error Correction	-2.07993	MM/M
MRE4	Medium Real 40 kHz Sonde Error Correction	-9.895	MM/M
MSR1	Medium Sigma Reference (10 kHz)	13520	MM/M
MSR2	Medium Sigma Reference (20 kHz)	3250	MM/M
MSR4	Medium Sigma Reference (40 kHz)	685	MM/M
MXE1	Medium Quad 10 kHz Sonde Error Correction	-94.7355	MM/M
MXE2	Medium Quad 20 kHz Sonde Error Correction	-32.0861	MM/M
MXE4	Medium Quad 40 kHz Sonde Error Correction	12.9006	MM/M
SBR	Shoulder Bed Resistivity Factor	1	OHMM
SFCR	SFL Channel Ratio	1000	
SFLE	SFL Enable	ENABLE	
SHT	Surface Hole Temperature	68	DEGF
SPAE	DIT-E SPARC Processing Enable	ENABLE	
SPNV	SP Next Value	0	MV
GPIT-A/B: General Purpose Inclinator			
ACPP	Accelerometer PROM Presence	PRESENT	
AFMO	Accelerometer Filtering Mode	MOVING_AVERAGE	
ART	Accelerometer Reference Temperature	20	DEGC
GLM	GPIT Logging Mode	DIPM	
ICMO	Inclinometry Computation Mode	AUTOMATIC_SELECTION	
MAPP	Magnetometer PROM Presence	PRESENT	
MDEC	Magnetic Field Declination	24.4701	DEG
MRTE	Magneto Reference Temperature	19	DEGC

APS-C: Accelerator-Porosity Tool

APS Software Version	0	
AASD APS Thermal and Array Detectors High Voltage Setting	1965.28	V
ADSO APS Array Detectors Data Source Switch	Both	
AFSD APS Far Detector High Voltage Setting	2077.04	V
AHCS APS Holesize Correction Source	BS	
AHSS APS Holesize Correction Switch	ON	
AMTY APS Environmental Corrections Mud Type	WaterBaseBarite	
ANSD APS Near Detector High Voltage Setting	1734.68	V
ASOS APS Standoff Correction Switch	ON	
ATSS APS Temperature-Pressure-Salinity Correction Switch	ON	
BHFL_APS APS TNPH Borehole Fluid Type	WATER	
BHS Borehole Status	OPEN	
BHT Bottom Hole Temperature (used in calculations)	60	DEGF
BSCO_APS APS TNPH Borehole Salinity Correction Option	YES	
DPPM Density Porosity Processing Mode	HIRS	
DSCO_APS APS TNPH Density Source	COMPUTED	
FSAL Formation Salinity	-50000	PPM
FSCO_APS APS TNPH Formation Salinity Correction Option	NO	
GCSE Generalized Caliper Selection	BS	
GDEV Average Angular Deviation of Borehole from Normal	0	DEG
GGRD Geothermal Gradient	0.01	DF/F
GRSE Generalized Mud Resistivity Selection	CHART_GEN_9	
GTSE Generalized Temperature Selection	LINEAR_ESTIMATE	
HSCO_APS APS TNPH Hole Size Correction Option	YES	
ISSBAR Barite Mud Switch	NOBARITE	
MATR Rock Matrix for Neutron Porosity Corrections	LIMESTONE	
MCCO_APS APS TNPH Mud Cake Correction Option	YES	
MCOR_APS APS TNPH Mud Correction	NATU	
MWCO_APS APS TNPH Mud Weight Correction Option	YES	
NARC APS Near/Array Calibration Ratio	1.05996	
NFRC APS Near/Far Calibration Ratio	0.890086	
PTCO_APS APS TNPH Pressure/Temperature Correction Option	YES	
SHT Surface Hole Temperature	68	DEGF
TNCO_APS APS TNPH Computation Option	NO	

HLDS: Hostile Litho-Density Sonde

CLCL HLDS LS Control Loop Controller Mode	AUTO_DEFAULT	
CLCS HLDS SS Control Loop Controller Mode	AUTO_DEFAULT	
CLLS HLDS Mode Loop Long Spacing	AUTO	
CLSS HLDS Mode Loop Short Spacing	AUTO	
DHC Density Hole Correction	BS	
DPPM Density Porosity Processing Mode	HIRS	
FD Fluid Density	1	G/C3
LATC HLDS Activation Correction	OFF	
LLDL HLDS LS Low Level Discriminator DAC	14000	
LLDS HLDS SS Low Level Discriminator DAC	14000	
LLML HLDS LS Low Level Discriminator Mode	AUTO	
LLMS HLDS SS Low Level Discriminator Mode	AUTO	
MDEN Matrix Density	2.71	G/C3
PHVL HLDS Long Spacing High Voltage Setting	1000	V
PHVS HLDS Short Spacing High Voltage Setting	1000	V
PSDL HLDS LS Pulse Shape Compensation DAC	30000	
PSDS HLDS SS Pulse Shape Compensation DAC	30000	
PSML HLDS LS Pulse Shape Compensation Mode	AUTO	
PSMS HLDS SS Pulse Shape Compensation Mode	AUTO	

HNGS-BA: Hostile Natural Gamma Ray Sonde

BAR1 HNGS Detector 1 Barite Constant	1	
BAR2 HNGS Detector 2 Barite Constant	1	
BHK HNGS Borehole Potassium Correction Concentration	0	
BHS Borehole Status	OPEN	
BHT Bottom Hole Temperature (used in calculations)	60	DEGF
CSD1 Inner Casing Outer Diameter	0	IN
CSD2 Outer Casing Outer Diameter	0	IN
CSW1 Inner Casing Weight	0	LB/F
CSW2 Outer Casing Weight	0	LB/F
DBCC HNGS Barite Constant Correction Flag	NONE	
GCSE Generalized Caliper Selection	BS	
GDEV Average Angular Deviation of Borehole from Normal	0	DEG
GGRD Geothermal Gradient	0.01	DF/F
GRSE Generalized Mud Resistivity Selection	CHART_GEN_9	
GTSE Generalized Temperature Selection	LINEAR_ESTIMATE	
H1P HNGS Detector 1 Allow/Disallow In Processing	ALLOW	
H2P HNGS Detector 2 Allow/Disallow In Processing	ALLOW	
HABK HNGS Borehole Potassium Running Average	0.000225953	
HALF HNGS Alpha Filter Length	60	IN
HCRB HNGS Apply Borehole Potassium Correction	NONE	
HMWM Mud Weighting Material	BARI	
HNPE HNGS Processing Enable	YES	
ISSBAR Barite Mud Switch	NOBARITE	
MATR Rock Matrix for Neutron Porosity Corrections	LIMESTONE	
S1BI HNGS Detector 1 Calibration Bismuth Count Rate	1.3	CPS
S2BI HNGS Detector 2 Calibration Bismuth Count Rate	1.3	CPS

SZDI	HNGS Detector 2 Calibration Bismuth Count Rate	1.5	CPS
SGRC	HNGS Standard Gamma-Ray Correction Flag	YES	
SHT	Surface Hole Temperature	68	DEGF
TPOS	Tool Position	ECCE	
VBA1	HNGS Detector 1 Variable Barite Factor Running Average	1.01133	
VBA2	HNGS Detector 2 Variable Barite Factor Running Average	1.00087	
DIR: Directional Survey Computation			
SPED	East Departure of Starting Point	0	M
SPND	North Departure of Starting Point	0	M
SPVD	TVD of Starting Point	0	M
TAZI	Vertical Section Azimuth	0	DEG
TIED	East Departure of Tie-in Point	0	M
TIMD	Along-hole depth of Tie-in Point	0	M
TIND	North Departure of Tie-in Point	0	M
TIVD	TVD of Tie-in Point	0	M
System and Miscellaneous			
ALTDPCCHAN	Name of alternate depth channel	SpeedCorrectedDepth	
BS	Bit Size	11.438	IN
BSAL	Borehole Salinity	-50000.00	PPM
CSIZ	Current Casing Size	4.500	IN
CWEI	Casing Weight	0.00	LB/F
DFD	Drilling Fluid Density	1.02	G/C3
DO	Depth Offset for Playback	-355.5	M
FLEV	Fluid Level	-50000.00	M
MST	Mud Sample Temperature	-50000.00	DEGC
PBVSADP	Use alternate depth channel for playback	NO	
PP	Playback Processing	NORMAL	
RMFS	Resistivity of Mud Filtrate Sample	-50000.0000	OHMM
RW	Resistivity of Connate Water	1.0000	OHMM
TD	Total Depth	2750.9	M
TDD	Total Depth - Driller	830.00	M
TDL	Total Depth - Logger	486.50	M
TWS	Temperature of Connate Water Sample	37.78	DEGC

Format: HNGSYields Vertical Scale: 1:200 Graphics File Created: 31-Dec-2009 22:20

OP System Version: 17C0-154

DIT-E	17C0-154	GPIT-A/B	SRPC-3870_Q3_2009_OP17_V3_b
DTA-A	17C0-154	APS-C	17C0-154
HLDS	17C0-154	LDSC-B	17C0-154
HNGC-B	17C0-154	HNGS-BA	17C0-154
DTC-H	17C0-154		

Input DLIS Files

DEFAULT	PI_APS_LDL_NGS_012LUP	FN:16	PRODUCER	06-Dec-2009 13:50	841.2 M	740.8 M
---------	-----------------------	-------	----------	-------------------	---------	---------

Output DLIS Files

DEFAULT	PI_APS_LDL_NGS_038PUP	FN:46	PRODUCER	31-Dec-2009 22:20		
---------	-----------------------	-------	----------	-------------------	--	--



MAXIS Field Log

Calibration and Check Summary

Measurement	Nominal	Master	Before	After	Change	Limit	Units
General Purpose Inclinometer Wellsite Calibration - CROUZET ACCELEROMETER PROM HAS BEEN READ CORRECTLY							
Before: 5-Dec-2009 0:24							
TEMPERATURE REFERENCE :	N/A	N/A	20	N/A	N/A	N/A	DEGC
YEAR OF CALIBRATION :	N/A	N/A	92	N/A	N/A	N/A	
MONTH OF CALIBRATION :	N/A	N/A	12	N/A	N/A	N/A	

MONTH OF CALIBRATION : N/A 10 N/A N/A N/A N/A
 SERIAL NUMBER : N/A N/A 448 N/A N/A N/A

General Purpose Inclinator Wellsite Calibration – CROUZET MAGNETOMETER PROM HAS BEEN READ CORRECTLY

Before: 5-Dec-2009 0:24
 TEMPERATURE REFERENCE : N/A N/A 19 N/A N/A N/A N/A DEGC
 YEAR OF CALIBRATION : N/A N/A 99 N/A N/A N/A N/A
 MONTH OF CALIBRATION : N/A N/A 12 N/A N/A N/A N/A
 SERIAL NUMBER : N/A N/A 428 N/A N/A N/A N/A

Accelerator-Porosity Tool Wellsite Calibration – Detector Background

Master: 5-Nov-2009 1:02 Before: 5-Dec-2009 0:29 After: 5-Dec-2009 5:35
 Near Det Bkg Cntrate 30.00 31.30 30.52 32.19 1.669 N/A CPS
 Far Det Bkg Cntrate 30.00 33.28 34.19 32.57 -1.619 N/A CPS
 Array-1 Det Bkg Cntrate 30.00 29.03 28.88 28.88 0 N/A CPS
 Array-2 Det Bkg Cntrate 30.00 29.71 30.73 30.41 -0.3170 N/A CPS
 Array Therm Det Bkg Cntrate 30.00 33.23 33.15 31.01 -2.137 N/A CPS

Accelerator-Porosity Tool Wellsite Calibration – Calibration Ratios

Master: 5-Nov-2009 1:02
 Near/Far Calibration Ratio 0.9250 0.8901 N/A N/A N/A N/A
 Near/Array Calibration Ratio 1.030 1.060 N/A N/A N/A N/A
 Near/Array Cal Ratio Up/Down 1.000 1.007 N/A N/A N/A N/A

Accelerator-Porosity Tool Wellsite Calibration – Tank Check

Master: 5-Nov-2009 1:02
 Array-1 Standoff Porosity 11.75 11.51 N/A N/A N/A N/A PU
 Array-2 Standoff Porosity 11.75 11.21 N/A N/A N/A N/A PU
 Average Slowing Down Time 6.000 5.881 N/A N/A N/A N/A US
 Array-1 SDT Ratio Up/Down 1.000 0.9799 N/A N/A N/A N/A
 Array-2 SDT Ratio Up/Down 1.000 0.9831 N/A N/A N/A N/A
 Sigma Formation 27.50 27.90 N/A N/A N/A N/A CU

Accelerator-Porosity Tool Wellsite Calibration – CCR7 signal boxes

Master: 5-Nov-2009 1:02
 Near Detector Plateau Setting 1650 1735 N/A N/A N/A N/A V
 Far Detector Plateau Setting 2000 2077 N/A N/A N/A N/A V
 Array Detector Plateau Setting 2000 1965 N/A N/A N/A N/A V

Hostile Litho-Density Sonde Wellsite Calibration – Background Measurement

Master: 4-Nov-2009 17:36 Before: 5-Dec-2009 0:29 After: 5-Dec-2009 5:35
 SS Cs Resolution Bkg 9.000 7.756 7.714 7.760 0.04584 1.800 %
 LS Cs Resolution Bkg 9.000 8.165 8.033 8.102 0.06869 1.800 %
 LSW1 Background 100.0 92.48 93.33 91.22 -2.119 3.000 CPS
 LSW2 Background 100.0 84.63 83.17 83.02 -0.1444 3.000 CPS
 LSW3 Background 200.0 191.1 190.6 190.4 -0.2039 6.000 CPS
 LSW4 Background 250.0 233.7 233.4 233.3 -0.05635 7.500 CPS
 LSW5 Background 600.0 544.1 542.8 542.3 -0.4822 18.00 CPS
 SSW1 Background 100.0 90.17 89.37 89.54 0.1704 3.000 CPS
 SSW2 Background 200.0 152.5 153.3 153.1 -0.2327 6.000 CPS
 SSW3 Background 500.0 429.0 428.0 429.8 1.724 15.00 CPS
 SSW4 Background 270.0 231.1 232.9 228.3 -4.600 8.100 CPS
 SSW5 Background 200.0 164.3 163.3 163.0 -0.2855 6.000 CPS

Hostile Litho-Density Sonde Wellsite Calibration – Aluminum Measurement

Master: 4-Nov-2009 17:36
 LSW1 Aluminum 600.0 567.1 N/A N/A N/A N/A CPS
 LSW2 Aluminum 900.0 807.6 N/A N/A N/A N/A CPS
 LSW3 Aluminum 1100 967.1 N/A N/A N/A N/A CPS
 LSW4 Aluminum 580.0 490.9 N/A N/A N/A N/A CPS
 LSW5 Aluminum 570.0 441.4 N/A N/A N/A N/A CPS
 SSW1 Aluminum 2800 2502 N/A N/A N/A N/A CPS
 SSW2 Aluminum 8000 6869 N/A N/A N/A N/A CPS
 SSW3 Aluminum 11600 9623 N/A N/A N/A N/A CPS
 SSW4 Aluminum 5000 3958 N/A N/A N/A N/A CPS
 SSW5 Aluminum 660.0 476.5 N/A N/A N/A N/A CPS

Hostile Litho-Density Sonde Wellsite Calibration – Lithology Measurement

Master: 4-Nov-2009 17:36
 LSW1 Iron 400.0 388.6 N/A N/A N/A N/A CPS
 LSW2 Iron 730.0 657.3 N/A N/A N/A N/A CPS
 LSW3 Iron 1000 863.8 N/A N/A N/A N/A CPS
 LSW4 Iron 520.0 446.9 N/A N/A N/A N/A CPS
 LSW5 Iron 470.0 407.2 N/A N/A N/A N/A CPS
 SSW1 Iron 2100 1834 N/A N/A N/A N/A CPS
 SSW2 Iron 6800 5739 N/A N/A N/A N/A CPS
 SSW3 Iron 10800 8813 N/A N/A N/A N/A CPS
 SSW4 Iron 4600 3631 N/A N/A N/A N/A CPS
 SSW5 Iron 580.0 422.9 N/A N/A N/A N/A CPS

Hostile Litho-Density Sonde Wellsite Calibration – Caliper Calibration

Before: Calibration out of date 16-Jul-2009 8:33

HLDS Caliper Small Ring	12.00	N/A	13.30	N/A	N/A	N/A	IN
HLDS Caliper Large Ring	15.14	N/A	16.70	N/A	N/A	N/A	IN

Hostile Natural Gamma Ray Sonde Wellsite Calibration – Detector 1 Check

Master: 31-Oct-2009 23:09 Before: 5-Dec-2009 6:52 After: 5-Dec-2009 10:52

Na 511 Peak Loc	40.00	39.48	39.68	39.63	-0.04846	1.000	
Na 511 Peak Res	15.50	16.07	14.74	14.98	0.2388	2.000	%
High Voltage	1150	1200	1152	1156	3.647	N/A	V
Na 1785 Peak Loc	142.6	142.5	142.5	142.2	-0.2954	7.000	
Na 1785 Peak Res	8.500	8.076	8.734	8.014	-0.7203	2.000	%
Temperature	15.50	36.12	18.23	18.85	0.6210	N/A	DEGC
Na Count Rate	45.00	34.81	33.11	33.82	0.7155	8.000	CPS

Hostile Natural Gamma Ray Sonde Wellsite Calibration – Detector 2 Check

Master: 31-Oct-2009 23:09 Before: 5-Dec-2009 6:52 After: 5-Dec-2009 10:52

Na 511 Peak Loc	40.00	39.63	39.70	39.59	-0.1114	1.000	
Na 511 Peak Res	15.50	15.54	14.91	16.25	1.336	2.000	%
High Voltage	1150	1123	1089	1091	1.856	N/A	V
Na 1785 Peak Loc	142.6	142.2	142.0	142.0	0.007385	7.000	
Na 1785 Peak Res	8.500	8.652	8.508	8.545	0.03727	2.000	%
Temperature	15.50	36.37	19.59	20.32	0.7251	N/A	DEGC
Na Count Rate	45.00	35.36	32.89	33.65	0.7532	8.000	CPS

Hostile Natural Gamma Ray Sonde Wellsite Calibration – Ratio Of Detector 1 To Detector 2

Master: 31-Oct-2009 23:09 Before: 5-Dec-2009 6:52 After: 5-Dec-2009 10:52

Coincidence Count Rate Ratio	1.000	0.9839	1.008	1.006	-0.002793	0.05000	
------------------------------	-------	--------	-------	-------	-----------	---------	--

Accelerator-Porosity Tool – Detector Plateau Settings :

Near Detector Plateau Setting 1735 V
 Far Detector Plateau Setting 2077 V
 Array Detector Plateau Setting 1965 V

Dual Induction – E / Equipment Identification

Primary Equipment:

Dual Induction Sonde DIS – HB 442
 Dual Induction Cartridge DIC – EB 438

Auxiliary Equipment:

Mass Isolated Housing MIH – ZA 342

Dual Induction – E Wellsite Calibration

Induction Electronics (10 kHz)

Phase	ID Elect Real Offset 10 kHz MM/M	Value	Phase	ID Elect Real Gain 10 kHz	Value	Phase	ID Elect Phase 10 kHz DEG	Value
Before		30.81	Before		0.9380	Before		9.026
	-267.4 (Minimum) 32.65 (Nominal) 332.6 (Maximum)			0.7960 (Minimum) 0.9460 (Nominal) 1.124 (Maximum)			-0.5967 (Minimum) 9.403 (Nominal) 19.40 (Maximum)	
Phase	ID Elect Quad Offset 10 kHz MM/M	Value	Phase	ID Elect Quad Gain 10 kHz	Value	Phase	IM Elect Phase 10 kHz DEG	Value
Before		24.59	Before		0.9538	Before		8.858
	-278.5 (Minimum) 21.47 (Nominal) 321.5 (Maximum)			0.8109 (Minimum) 0.9609 (Nominal) 1.145 (Maximum)			-0.7277 (Minimum) 9.272 (Nominal) 19.27 (Maximum)	
Phase	IM Elect Real Offset 10 kHz MM/M	Value	Phase	IM Elect Real Gain 10 kHz	Value			
Before		83.57	Before		0.9467			
	-465.7 (Minimum) 84.34 (Nominal) 634.3 (Maximum)			0.8034 (Minimum) 0.9534 (Nominal) 1.134 (Maximum)				
Phase	IM Elect Quad Offset 10 kHz MM/M	Value	Phase	IM Elect Quad Gain 10 kHz	Value			
Before		43.94	Before		0.9273			
	-505.4 (Minimum) 44.57 (Nominal) 594.6 (Maximum)			0.7864 (Minimum) 0.9364 (Nominal) 1.110 (Maximum)				

Before: 5-Dec-2009 2:33

Dual Induction – E Wellsite Calibration

Induction Electronics (20 kHz)

Phase	ID Elect Real Offset 20 kHz MM/M	Value	Phase	ID Elect Real Gain 20 kHz	Value	Phase	ID Elect Phase 20 kHz DEG	Value
Before		12.20	Before		0.9657	Before		4.290
	-112.1 (Minimum) 12.92 (Nominal) 137.9 (Maximum)			0.8195 (Minimum) 0.9695 (Nominal) 1.157 (Maximum)			-10.06 (Minimum) 4.941 (Nominal) 19.94 (Maximum)	

Phase	ID Elect Quad Offset 20 kHz	MM/M	Value	Phase	ID Elect Quad Gain 20 kHz	Value	Phase	IM Elect Phase 20 kHz	DEG	Value	
Before			9.964	Before		0.9845	Before			4.681	
	-116.3 (Minimum)	8.664 (Nominal)	133.7 (Maximum)		0.8375 (Minimum)	0.9875 (Nominal)	1.182 (Maximum)		-9.662 (Minimum)	5.338 (Nominal)	20.34 (Maximum)
Phase	IM Elect Real Offset 20 kHz	MM/M	Value	Phase	IM Elect Real Gain 20 kHz	Value					
Before			34.34	Before		0.9906					
	-190.4 (Minimum)	34.62 (Nominal)	259.6 (Maximum)		0.8410 (Minimum)	0.9910 (Nominal)	1.187 (Maximum)				
Phase	IM Elect Quad Offset 20 kHz	MM/M	Value	Phase	IM Elect Quad Gain 20 kHz	Value					
Before			18.20	Before		0.9703					
	-206.6 (Minimum)	18.45 (Nominal)	243.4 (Maximum)		0.8231 (Minimum)	0.9731 (Nominal)	1.162 (Maximum)				

Before: 5-Dec-2009 2:34

Dual Induction – E Wellsite Calibration											
Induction Electronics (40 kHz)											
Phase	ID Elect Real Offset 40 kHz	MM/M	Value	Phase	ID Elect Real Gain 40 kHz	Value	Phase	ID Elect Phase 40 kHz	DEG	Value	
Before			7.971	Before		0.9488	Before			15.29	
	-76.50 (Minimum)	8.503 (Nominal)	93.50 (Maximum)		0.8112 (Minimum)	0.9612 (Nominal)	1.145 (Maximum)		-3.044 (Minimum)	16.96 (Nominal)	36.96 (Maximum)
Phase	ID Elect Quad Offset 40 kHz	MM/M	Value	Phase	ID Elect Quad Gain 40 kHz	Value	Phase	IM Elect Phase 40 kHz	DEG	Value	
Before			6.643	Before		0.9765	Before			15.08	
	-79.21 (Minimum)	5.786 (Nominal)	90.79 (Maximum)		0.8370 (Minimum)	0.9870 (Nominal)	1.182 (Maximum)		-3.281 (Minimum)	16.72 (Nominal)	36.72 (Maximum)
Phase	IM Elect Real Offset 40 kHz	MM/M	Value	Phase	IM Elect Real Gain 40 kHz	Value					
Before			22.09	Before		0.9908					
	-107.6 (Minimum)	22.42 (Nominal)	152.4 (Maximum)		0.8470 (Minimum)	0.9970 (Nominal)	1.196 (Maximum)				
Phase	IM Elect Quad Offset 40 kHz	MM/M	Value	Phase	IM Elect Quad Gain 40 kHz	Value					
Before			11.80	Before		0.9700					
	-118.0 (Minimum)	12.02 (Nominal)	142.0 (Maximum)		0.8285 (Minimum)	0.9785 (Nominal)	1.170 (Maximum)				

Before: 5-Dec-2009 2:35

Dual Induction – E Wellsite Calibration							
SFL Electronics							
Phase	SFL Voltage Offset	MV	Value	Phase	SFL Voltage Gain	Value	
Before			0.1561	Before		0.9974	
	-15.00 (Minimum)	0 (Nominal)	15.00 (Maximum)		0.8500 (Minimum)	1.000 (Nominal)	1.200 (Maximum)
Phase	SFL Current Offset	MA	Value	Phase	SFL Current Gain	Value	
Before			0.03601	Before		1.009	
	-0.6000 (Minimum)	0 (Nominal)	0.6000 (Maximum)		0.8500 (Minimum)	1.000 (Nominal)	1.200 (Maximum)

Before: 5-Dec-2009 2:35

General Purpose Incliner / Equipment Identification		
Primary Equipment:		
GPIT Cartridge – A	GPIC – A	719
Auxiliary Equipment:		
GPIT Housing	GPIH – A	2864

Accelerator–Porosity Tool / Equipment Identification		
Primary Equipment:		
Accelerator–Porosity Sonde	APS – C	22
APS Minitron	MNTR – F	5589
Auxiliary Equipment:		
Accelerator–Porosity Housing	APH – AC	22
APS Calibration Water Tank	SFT – 178	2
APS Aluminum Calibrator Sleeve	SFT – 281	2

Accelerator-Porosity Tool Wellsite Calibration											
Detector Background											
Phase	Near Det Bkg Cntrate CPS	Value	Phase	Far Det Bkg Cntrate CPS	Value	Phase	Array-1 Det Bkg Cntrate CPS	Value			
Master		31.30	Master		33.28	Master		29.03			
Before		30.52	Before		34.19	Before		28.88			
After		32.19	After		32.57	After		28.88			
1.000 (Minimum) 30.00 (Nominal) 50.00 (Maximum)			1.000 (Minimum) 30.00 (Nominal) 50.00 (Maximum)			1.000 (Minimum) 30.00 (Nominal) 50.00 (Maximum)					
Phase	Array-2 Det Bkg Cntrate CPS	Value	Phase	Array Therm Det Bkg Cntrate CPS	Value						
Master		29.71	Master		33.23						
Before		30.73	Before		33.15						
After		30.41	After		31.01						
1.000 (Minimum) 30.00 (Nominal) 50.00 (Maximum)			1.000 (Minimum) 30.00 (Nominal) 50.00 (Maximum)								
Master: 5-Nov-2009 1:02				Before: 5-Dec-2009 0:29				After: 5-Dec-2009 5:35			

Accelerator-Porosity Tool Wellsite Calibration										
Calibration Ratios										
Phase	Near/Far Calibration Ratio	Value	Phase	Near/Array Calibration Ratio	Value	Phase	Near/Array Cal Ratio Up/Down	Value		
Master		0.8901	Master		1.060	Master		1.007		
0.8000 (Minimum) 0.9250 (Nominal) 1.050 (Maximum)			0.9000 (Minimum) 1.030 (Nominal) 1.170 (Maximum)			0.9700 (Minimum) 1.000 (Nominal) 1.030 (Maximum)				
Master: 5-Nov-2009 1:02										

Accelerator-Porosity Tool Wellsite Calibration										
Tank Check										
Phase	Array-1 Standoff Porosity PU	Value	Phase	Array-2 Standoff Porosity PU	Value	Phase	Average Slowing Down Time US	Value		
Master		11.51	Master		11.21	Master		5.881		
9.900 (Minimum) 11.75 (Nominal) 13.60 (Maximum)			9.900 (Minimum) 11.75 (Nominal) 13.60 (Maximum)			5.500 (Minimum) 6.000 (Nominal) 6.250 (Maximum)				
Phase	Array-1 SDT Ratio Up/Down	Value	Phase	Array-2 SDT Ratio Up/Down	Value	Phase	Sigma Formation CU	Value		
Master		0.9799	Master		0.9831	Master		27.90		
0.9500 (Minimum) 1.000 (Nominal) 1.050 (Maximum)			0.9500 (Minimum) 1.000 (Nominal) 1.050 (Maximum)			20.00 (Minimum) 27.50 (Nominal) 35.00 (Maximum)				
Master: 5-Nov-2009 1:02										

Hostile Litho-Density Sonde / Equipment Identification			
Primary Equipment:			
Hostile Litho Density Sonde	HLDS - D	57	
Hostile Litho Density High Voltage	HLDV - D	51	
Gamma Source Radioactive	GSR - Z	2397	
Auxiliary Equipment:			
Hostile Litho Density Pad	HLDP - C	61	
Hostile Litho Density High Voltage Housi	HEH - H	53	

Hostile Litho-Density Sonde Wellsite Calibration										
Background Measurement										
Phase	SS Cs Resolution Bkg %	Value	Phase	LS Cs Resolution Bkg %	Value	Phase	LSW1 Background CPS	Value		
Master		7.756	Master		8.165	Master		92.48		
Before		7.714	Before		8.033	Before		93.33		
After		7.760	After		8.102	After		91.22		
7.000 (Minimum) 9.000 (Nominal) 11.00 (Maximum)			7.000 (Minimum) 9.000 (Nominal) 11.00 (Maximum)			55.00 (Minimum) 100.0 (Nominal) 150.0 (Maximum)				
Phase	LSW2 Background CPS	Value	Phase	LSW3 Background CPS	Value	Phase	LSW4 Background CPS	Value		
Master		84.63	Master		191.1	Master		233.7		
Before		83.17	Before		190.6	Before		233.4		
After		83.02	After		190.4	After		233.3		

50.00 (Minimum) 100.0 (Nominal) 140.0 (Maximum)			110.0 (Minimum) 200.0 (Nominal) 290.0 (Maximum)			140.0 (Minimum) 250.0 (Nominal) 360.0 (Maximum)		
Phase	LSW5 Background CPS	Value	Phase	SSW1 Background CPS	Value	Phase	SSW2 Background CPS	Value
Master		544.1	Master		90.17	Master		152.5
Before		542.8	Before		89.37	Before		153.3
After		542.3	After		89.54	After		153.1
330.0 (Minimum) 600.0 (Nominal) 830.0 (Maximum)			55.00 (Minimum) 100.0 (Nominal) 150.0 (Maximum)			100.0 (Minimum) 200.0 (Nominal) 260.0 (Maximum)		
Phase	SSW3 Background CPS	Value	Phase	SSW4 Background CPS	Value	Phase	SSW5 Background CPS	Value
Master		429.0	Master		231.1	Master		164.3
Before		428.0	Before		232.9	Before		163.3
After		429.8	After		228.3	After		163.0
280.0 (Minimum) 500.0 (Nominal) 700.0 (Maximum)			150.0 (Minimum) 270.0 (Nominal) 380.0 (Maximum)			110.0 (Minimum) 200.0 (Nominal) 270.0 (Maximum)		
Master: 4-Nov-2009 17:36			Before: 5-Dec-2009 0:29			After: 5-Dec-2009 5:35		

Litho-Density Spectroscopy Cartridge - B / Equipment Identification

Primary Equipment: LDSC Cartridge	LDSC - B	326
Auxiliary Equipment: LDSC Housing	LDSh - A	319

Hostile Natural Gamma Ray Cartridge - B / Equipment Identification

Primary Equipment: HNGC Cartridge	HNGC - B	300
Auxiliary Equipment: HNGC Housing	HNGH - A	115

Hostile Natural Gamma Ray Sonde / Equipment Identification

Primary Equipment: HNGS Sonde	HNGS - BA	194
Auxiliary Equipment: HNGS Sonde Housing Gamma Source Radioactive	HNSH - BA GSR - U	205 616008

Hostile Natural Gamma Ray Sonde Wellsite Calibration

Detector 1 Check

37.50 (Minimum) 40.00 (Nominal) 43.50 (Maximum)			12.00 (Minimum) 15.50 (Nominal) 19.00 (Maximum)			900.0 (Minimum) 1150 (Nominal) 1600 (Maximum)		
Phase	Na 511 Peak Loc	Value	Phase	Na 511 Peak Res %	Value	Phase	High Voltage V	Value
Master		39.48	Master		16.07	Master		1200
Before		39.68	Before		14.74	Before		1152
After		39.63	After		14.98	After		1156
Phase	Na 1785 Peak Loc	Value	Phase	Na 1785 Peak Res %	Value	Phase	Temperature DEGC	Value
Master		142.5	Master		8.076	Master		36.12
Before		142.5	Before		8.734	Before		18.23
After		142.2	After		8.014	After		18.85
135.0 (Minimum) 142.6 (Nominal) 150.3 (Maximum)			7.000 (Minimum) 8.500 (Nominal) 11.00 (Maximum)			-28.89 (Minimum) 15.50 (Nominal) 60.00 (Maximum)		
Phase	Na Count Rate CPS	Value						
Master		34.81						
Before		33.11						

After	10.00 (Minimum)	45.00 (Nominal)	100.0 (Maximum)	33.82
Master: 31-Oct-2009 23:09				
		Before: 5-Dec-2009 6:52		After: 5-Dec-2009 10:52

Hostile Natural Gamma Ray Sonde Wellsite Calibration														
Detector 2 Check														
Phase	Na 511 Peak Loc			Value	Phase	Na 511 Peak Res %			Value	Phase	High Voltage V		Value	
Master				39.63	Master				15.54	Master			1123	
Before				39.70	Before				14.91	Before			1089	
After				39.59	After				16.25	After			1091	
	37.50 (Minimum)	40.00 (Nominal)	43.50 (Maximum)			12.00 (Minimum)	15.50 (Nominal)	19.00 (Maximum)			900.0 (Minimum)	1150 (Nominal)	1600 (Maximum)	
Phase	Na 1785 Peak Loc			Value	Phase	Na 1785 Peak Res %			Value	Phase	Temperature DEGC		Value	
Master				142.2	Master				8.652	Master			36.37	
Before				142.0	Before				8.508	Before			19.59	
After				142.0	After				8.545	After			20.32	
	135.0 (Minimum)	142.6 (Nominal)	150.3 (Maximum)			7.000 (Minimum)	8.500 (Nominal)	11.00 (Maximum)			-28.89 (Minimum)	15.50 (Nominal)	60.00 (Maximum)	
Phase	Na Count Rate CPS			Value										
Master				35.36										
Before				32.89										
After				33.65										
	10.00 (Minimum)	45.00 (Nominal)	100.0 (Maximum)											
Master: 31-Oct-2009 23:09					Before: 5-Dec-2009 6:52					After: 5-Dec-2009 10:52				

Hostile Natural Gamma Ray Sonde Wellsite Calibration		
Ratio Of Detector 1 To Detector 2		
Phase	Coincidence Count Rate Ratio	Value
Master		0.9839
Before		1.008
After		1.006
	0.9500 (Minimum)	1.000 (Nominal)
		1.050 (Maximum)
Master: 31-Oct-2009 23:09		
Before: 5-Dec-2009 6:52		
After: 5-Dec-2009 10:52		

DTS Telemetry Tool / Equipment Identification		
Primary Equipment:		
DTC-H Auxiliary Cartridge	DTCH - A	
DTC-H Telemetry Cartridge	DTCH - A	8798
Auxiliary Equipment:		
DTCH Telemetry Cartridge Housing	ECH - KC	2304

Field: **Canterbury Basin**
Rig: **JOIDES Resolution**
Ocean: **Pacific**

Natural Gamma Spectroscopy