

Processed FMS Images Depth Unit: m WMSF

COMPANY: Lamont Doherty

WELL: Expedition 317 HoleU1353C

FIELD: Canterbury Basin

Ocean: Pacific

COUNTRY: USA

Date Processed: 28-Dec-2009

Job Number: Processed at:

Well Location:

Latitude: S 44° 46.0982' Longitude: E 171° 40.4380'

Elevations: KB: 11m DF: 11m GL: -93.5m

FOLD HERE The well name, location and borehole reference data were furnished by the customer.

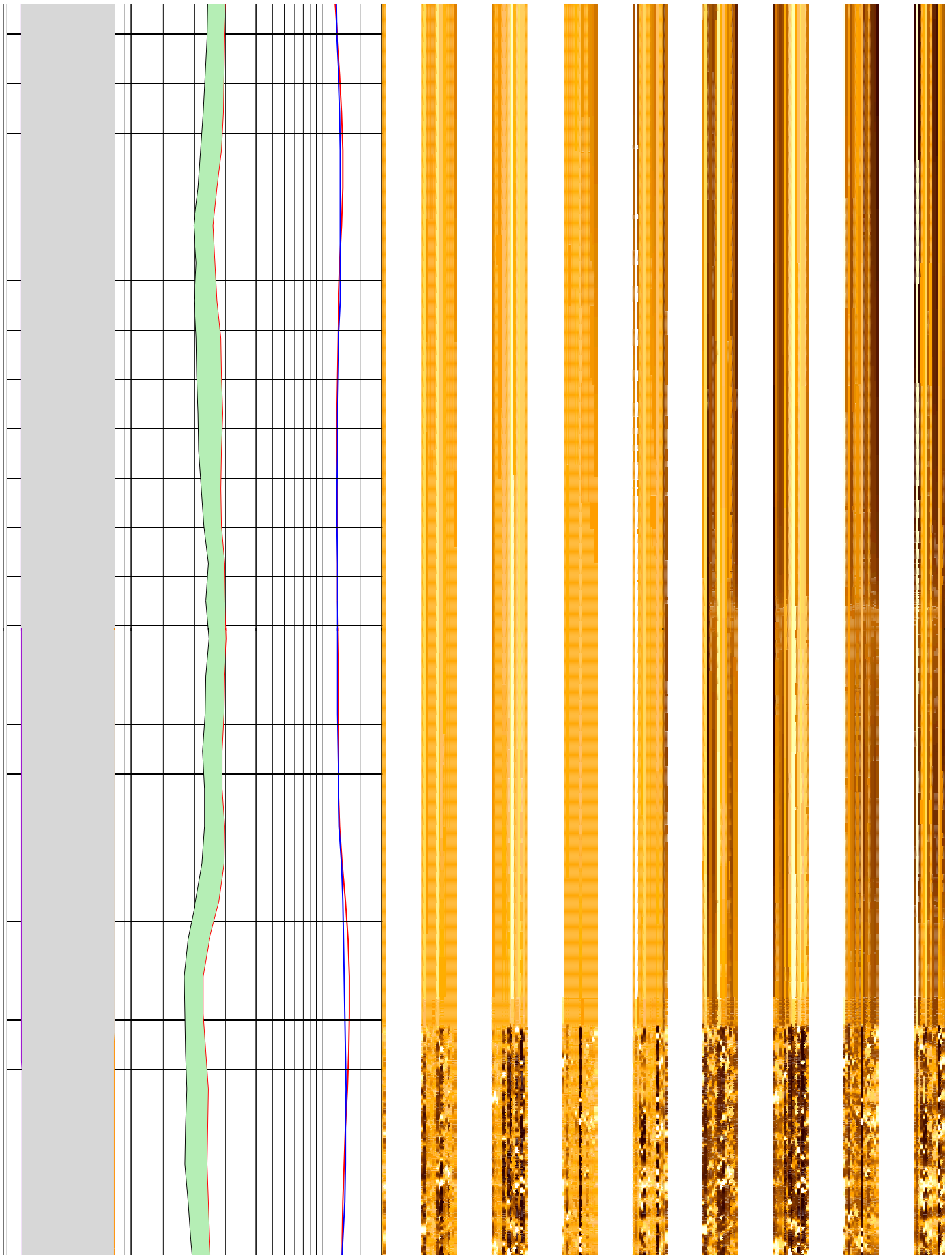
All interpretations are opinions based on inferences from electrical or other measurements and we cannot, and do not guarantee the accuracy or correctness of any interpretation, and we shall not, except in the case of gross or willful negligence on our part, be liable or responsible for any loss, costs, damages or expenses incurred or sustained by anyone resulting from any interpretations made by any of our officers, agents or employees. These interpretations are also subject to Clause 4 of our General Terms and Conditions as set out in our current Price Schedule.

MD 1 : 20 m	C2_FMS_p1 -20 (in) 20	HSGR_DIT 0 (gAPI) 100	IMPH_DIT 0.3 (ohm.m) 3	FMS_p1-static Horizontal Scale: 1 : 6.981 Orientation North 0 120 240 360 Resistive FMS4 Image Conductive	FMS_p1-dynamic Horizontal Scale: 1 : 6.981 Orientation North 0 120 240 360 Resistive FMS4 Image Conductive
	C1_FMS_p1 20 (in) -20	HCGR_DIT 0 (gAPI) 100			
	lgp_Area_	lgp_Area_			

136

138

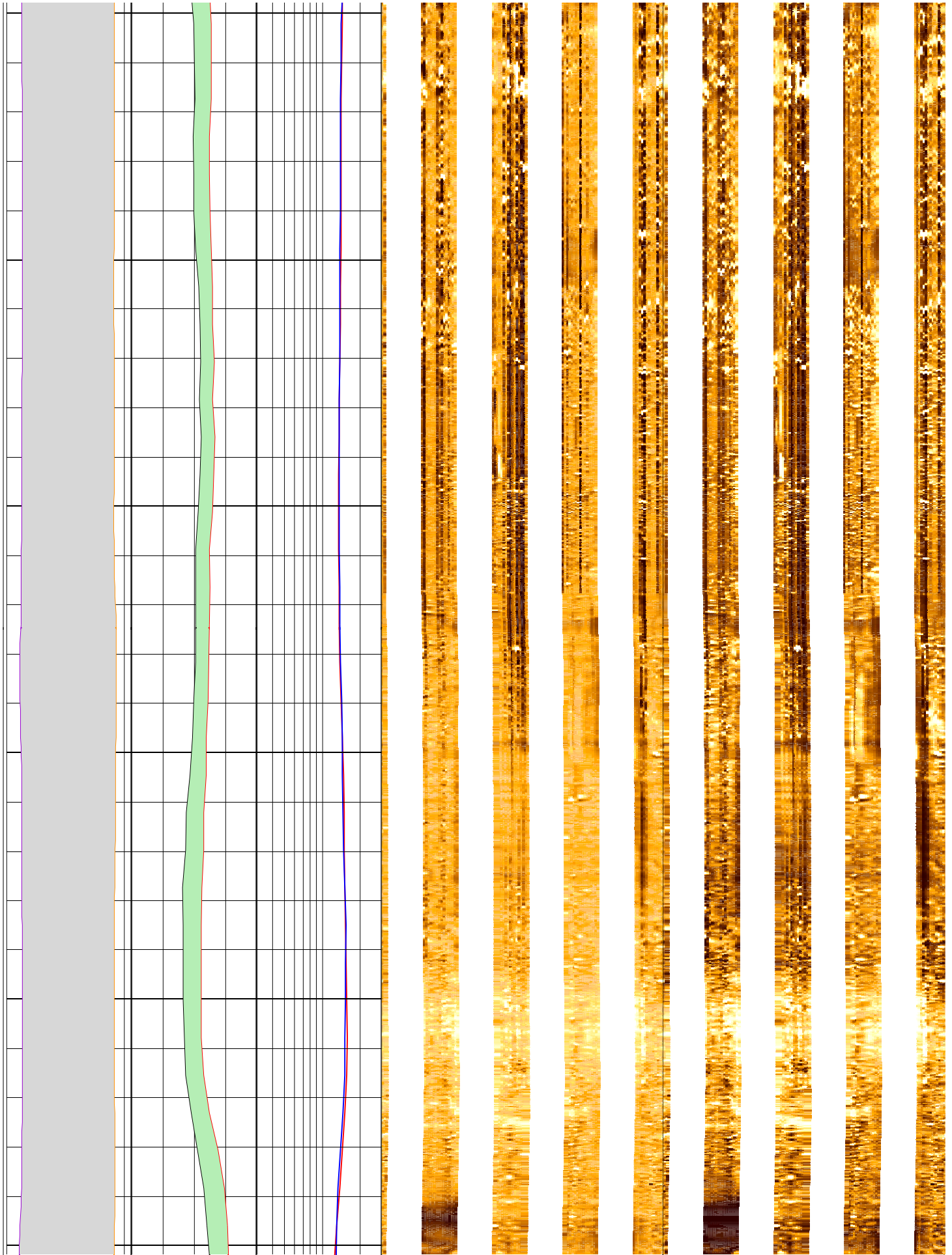
140



142

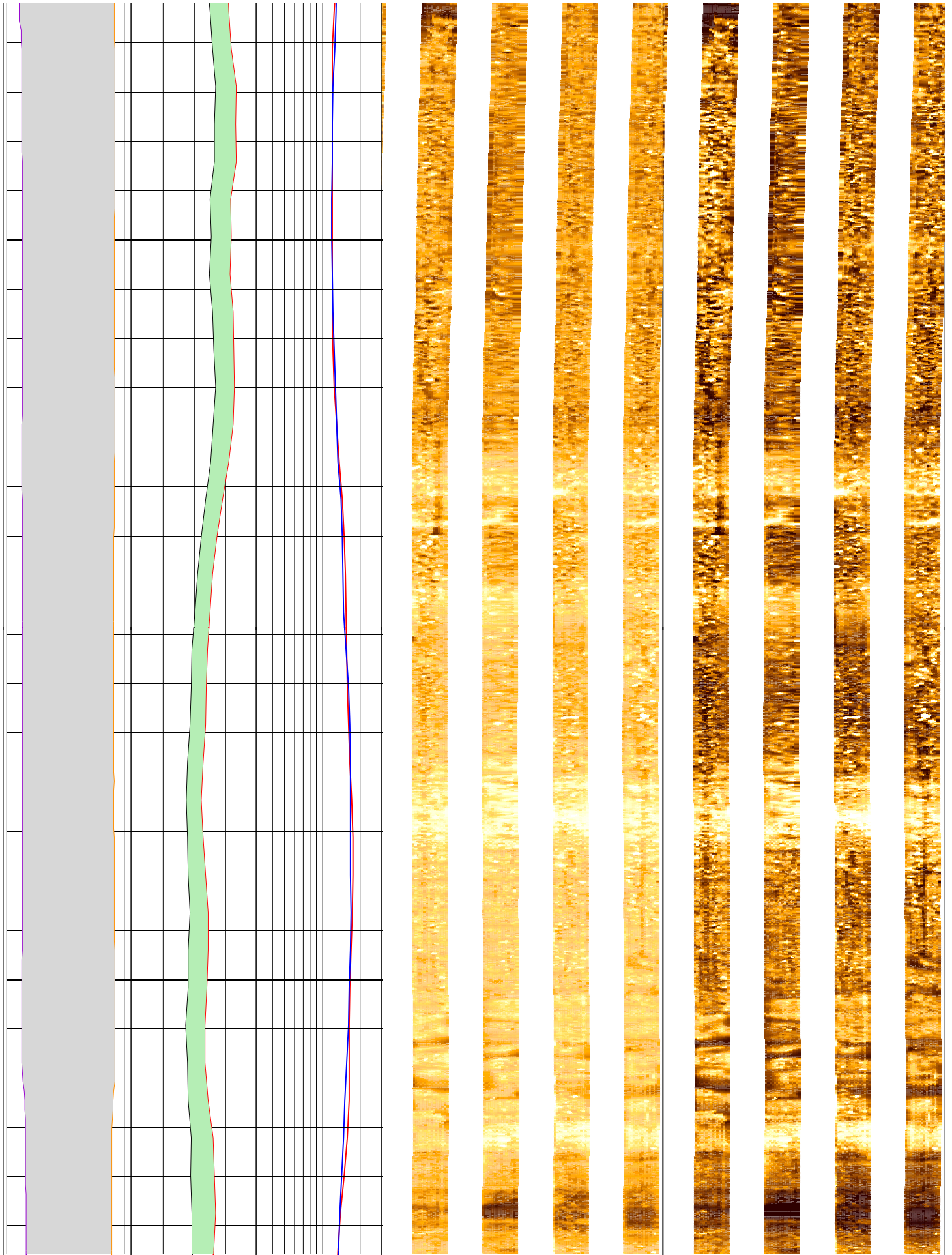
144

146



148

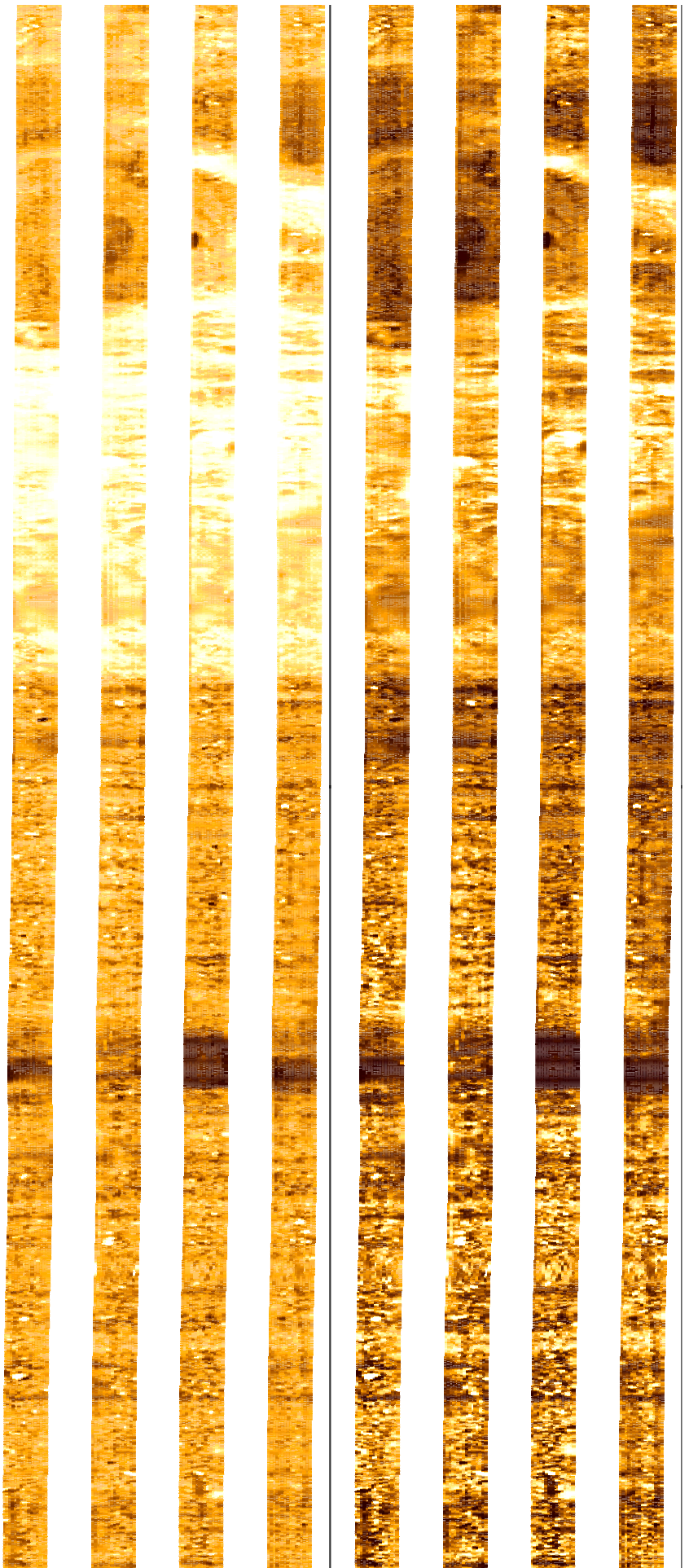
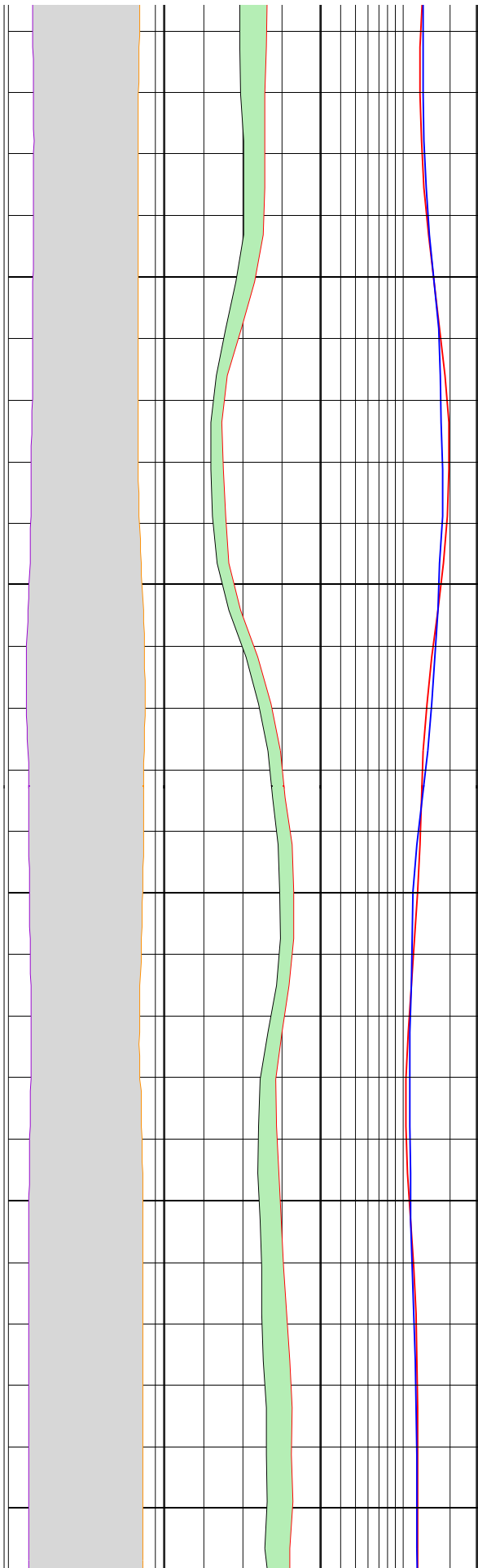
150



152

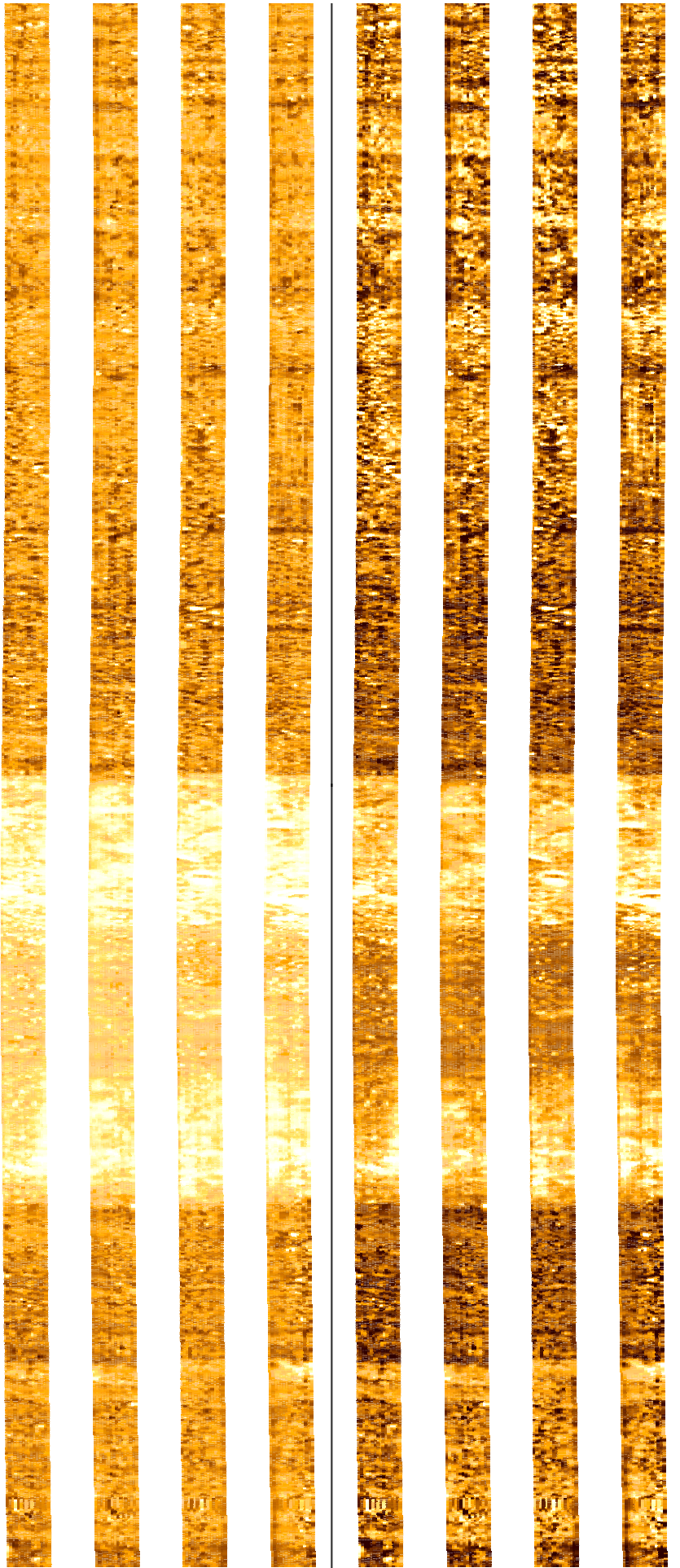
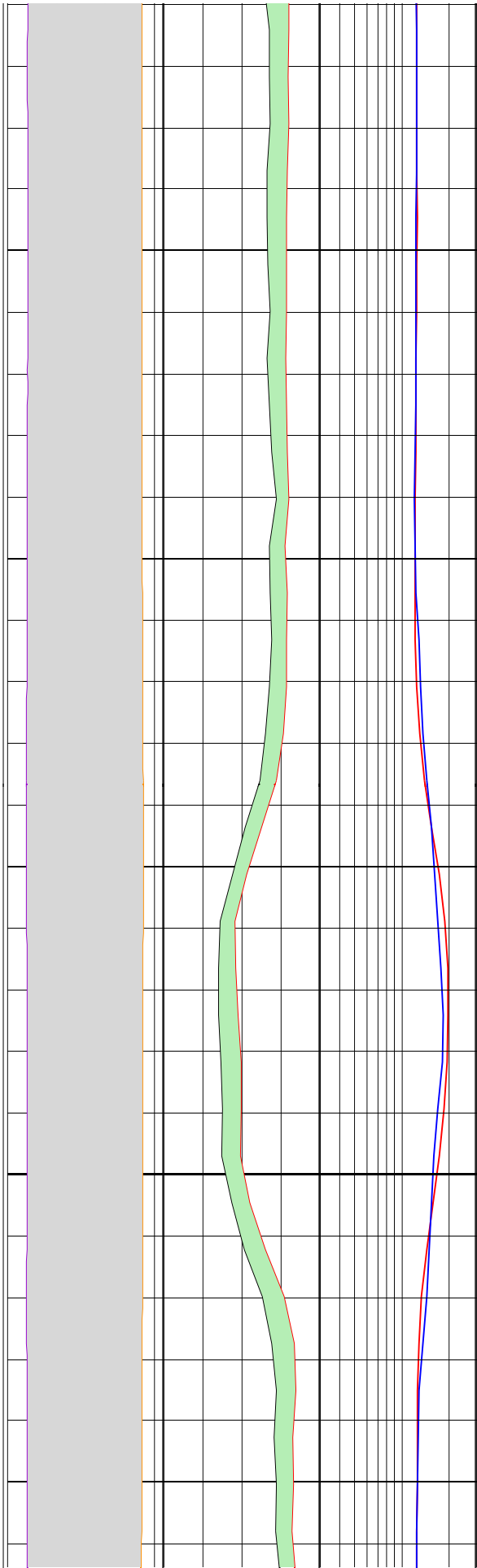
154

156



158

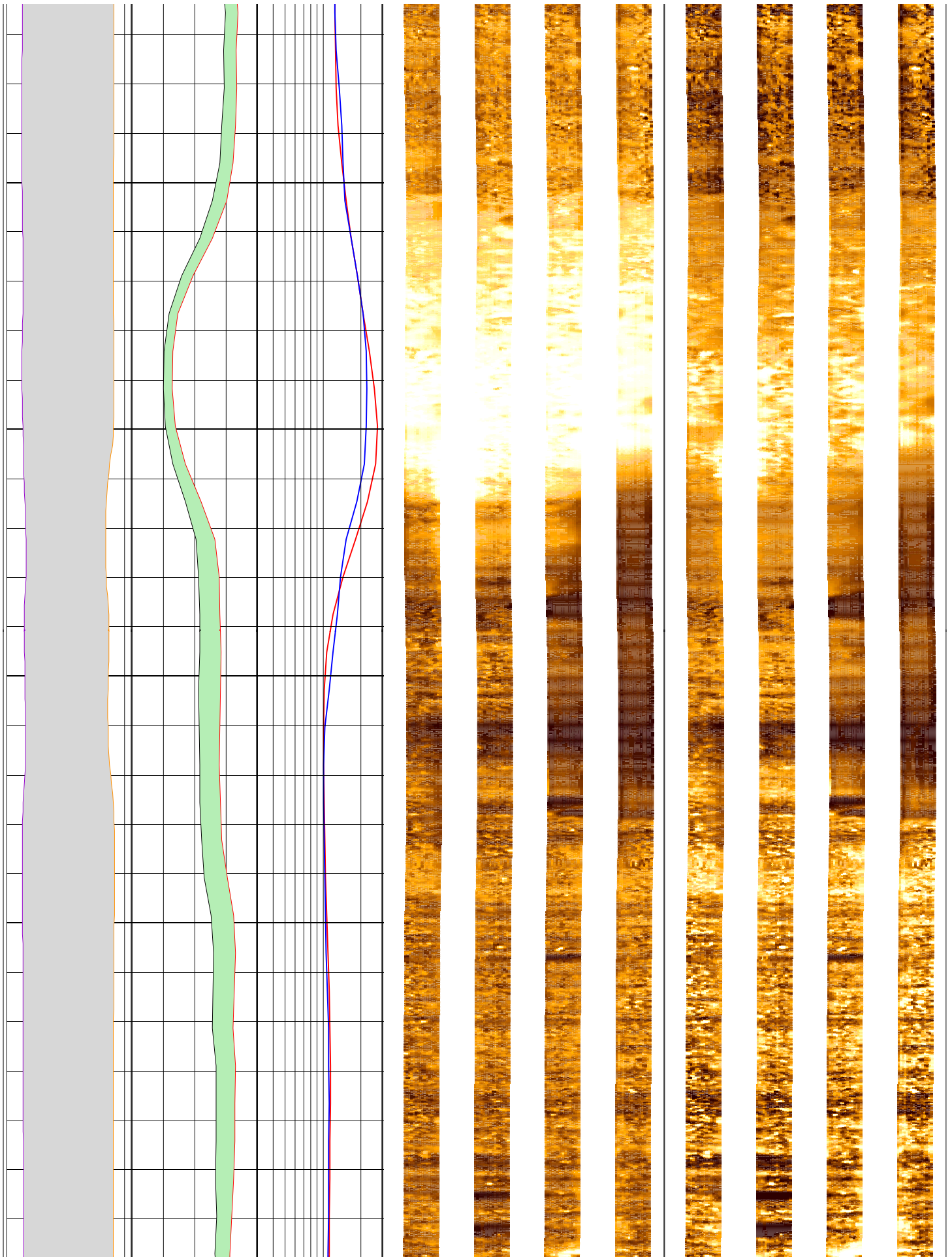
160



162

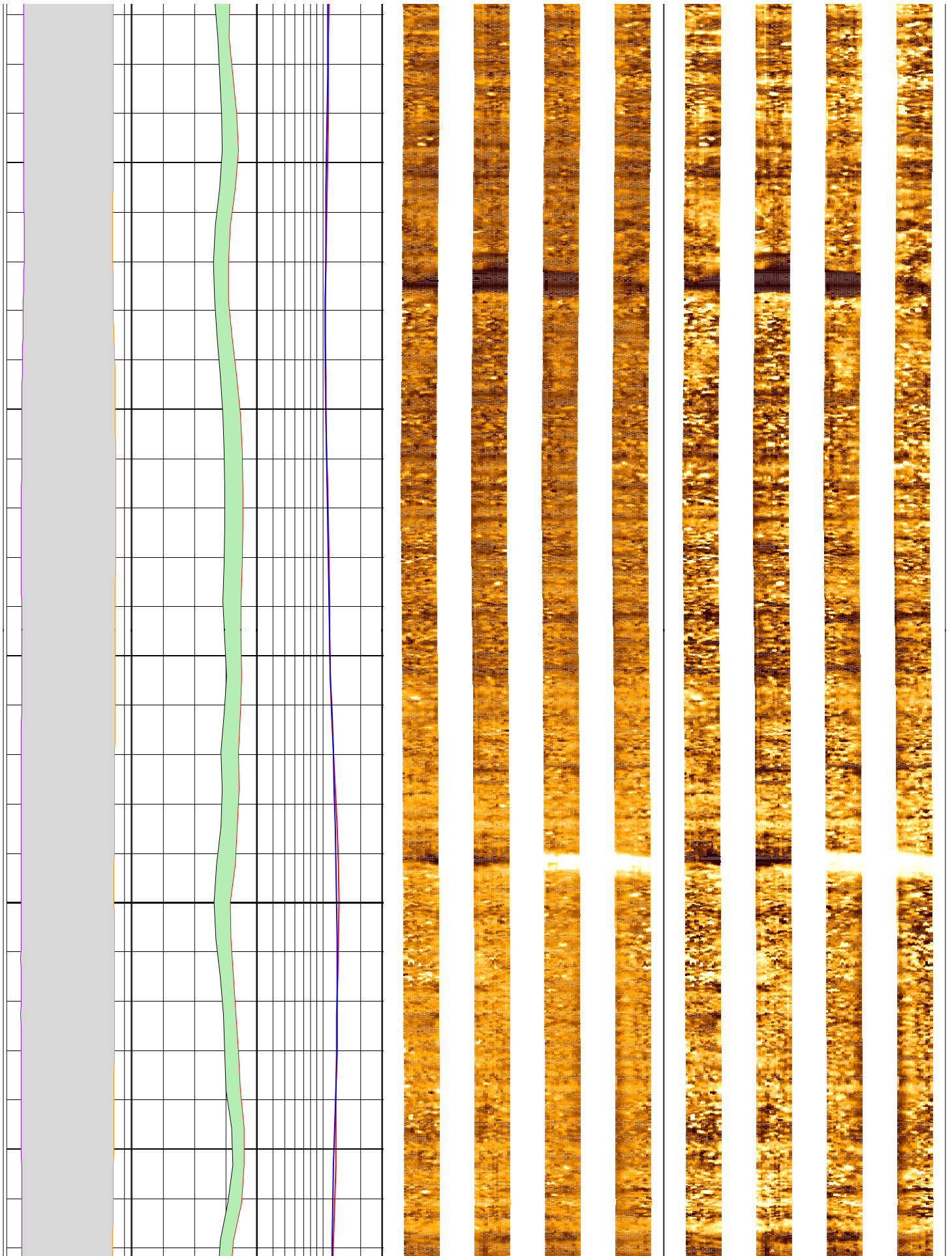
164

166



168

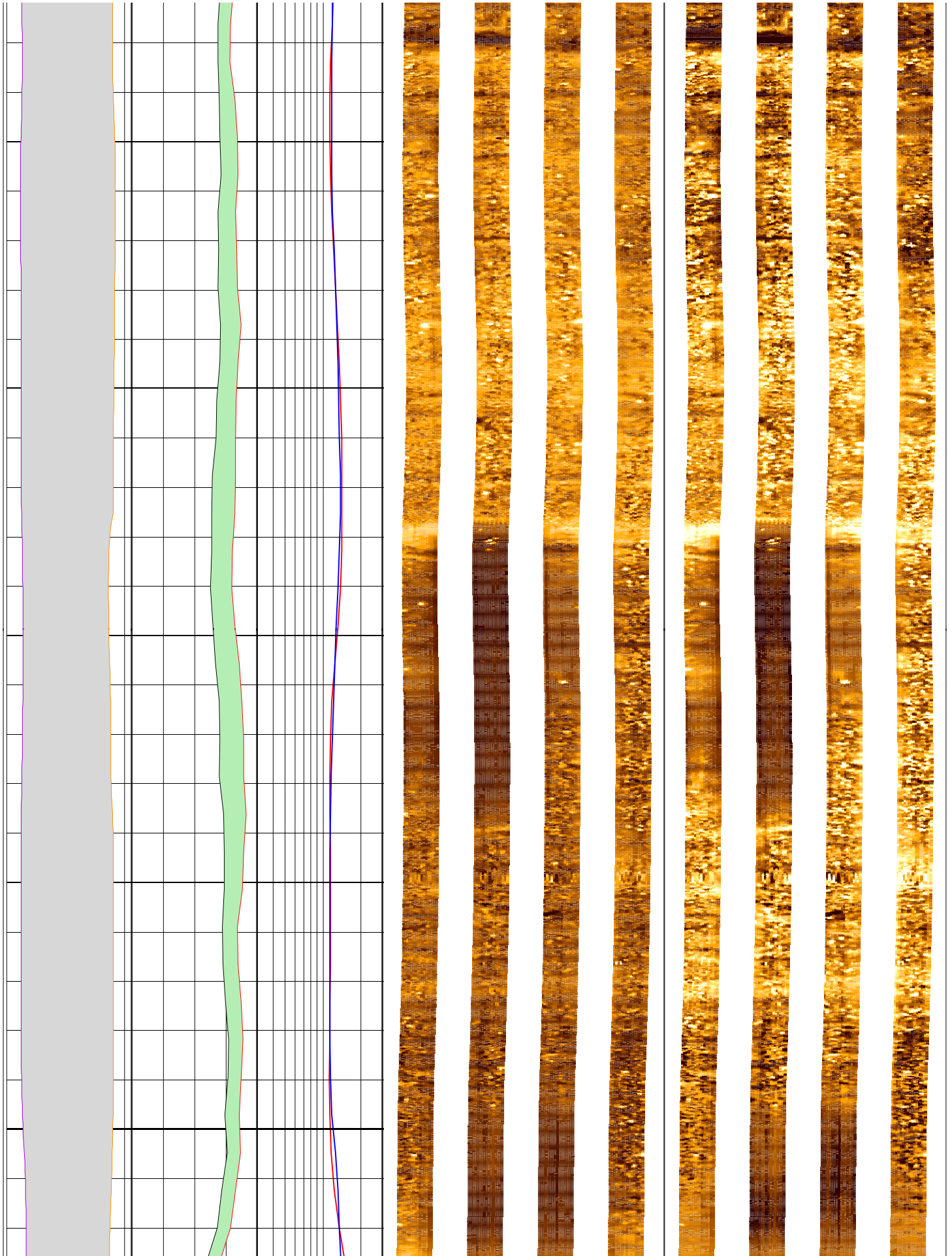
170



172

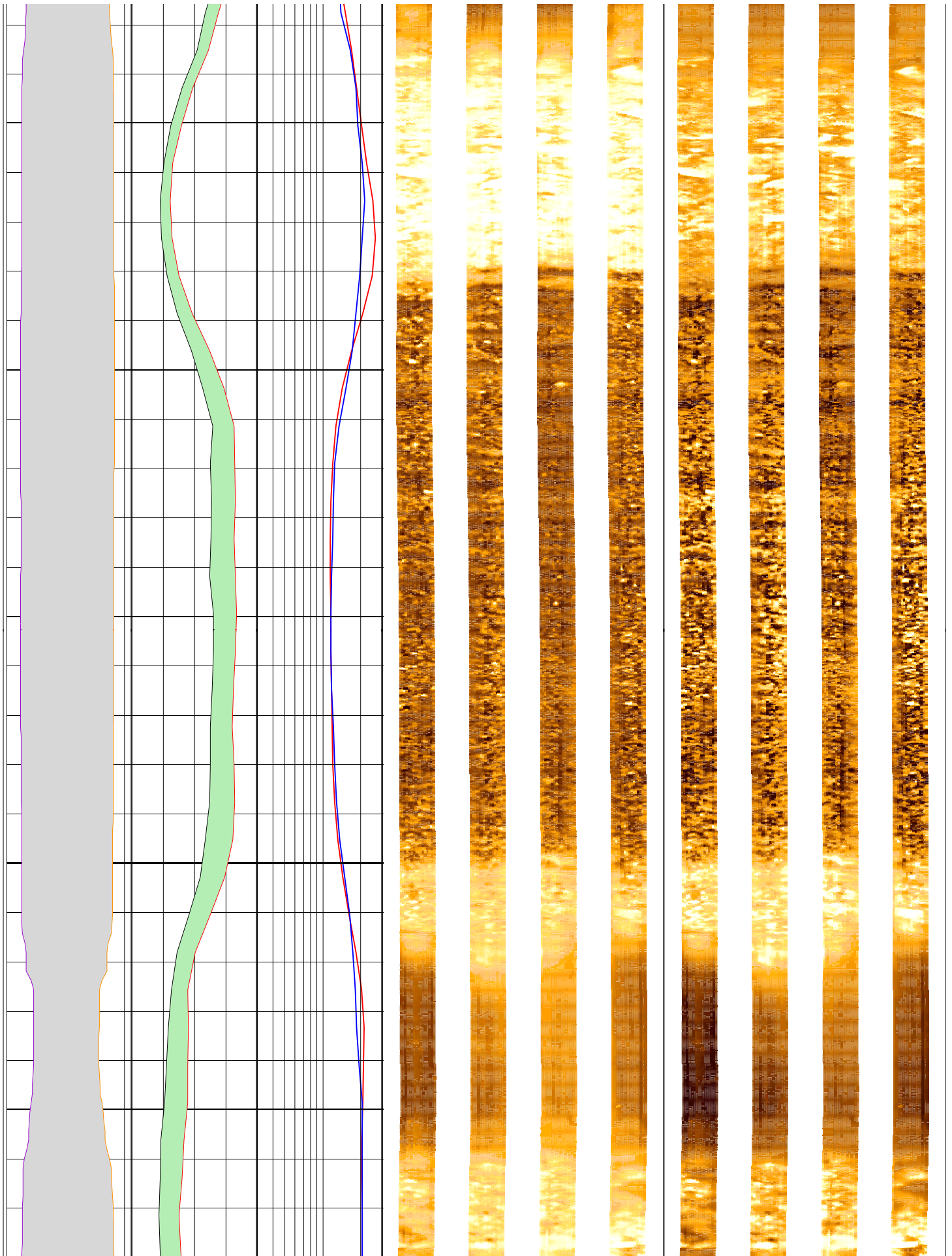
174

176



178

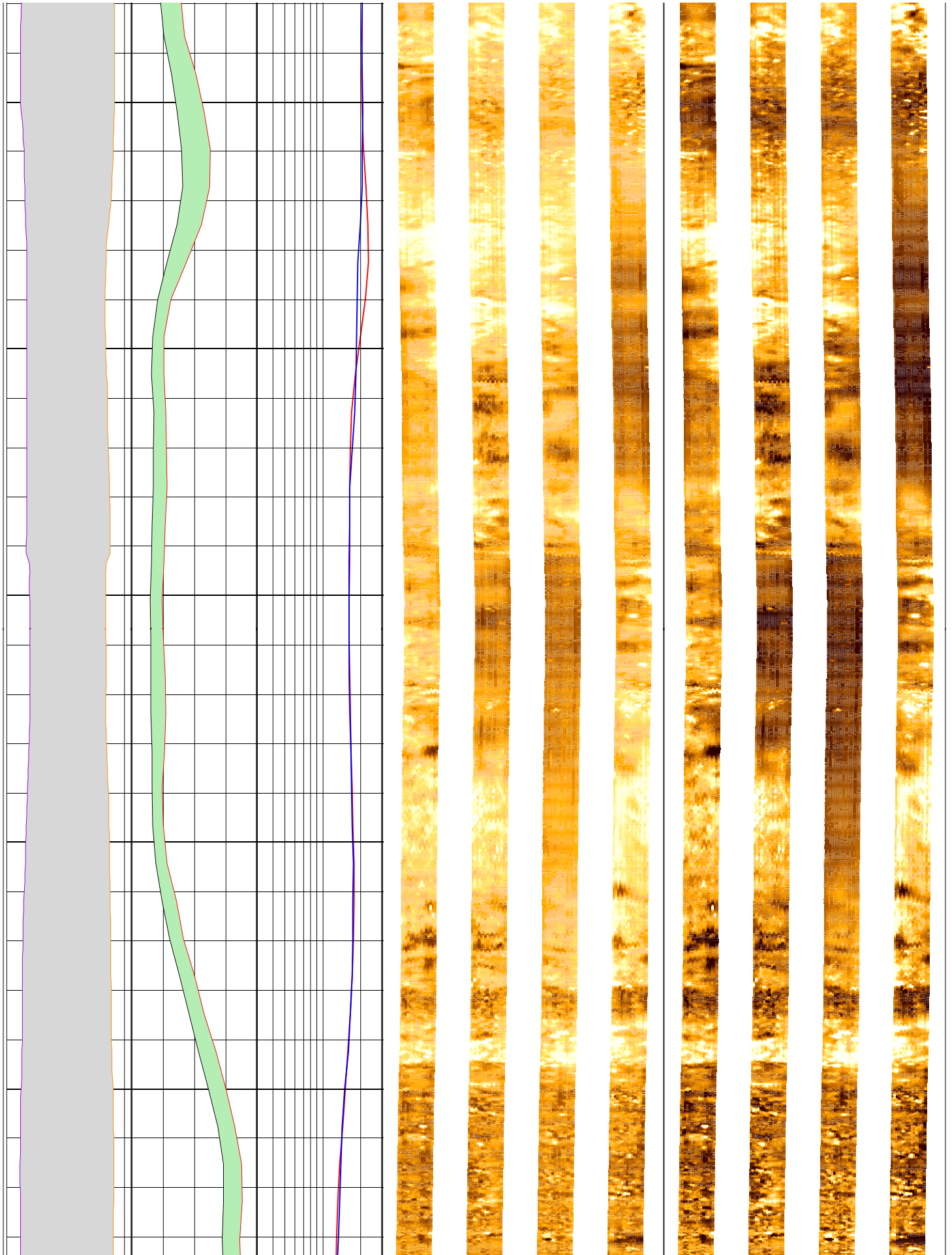
180



182

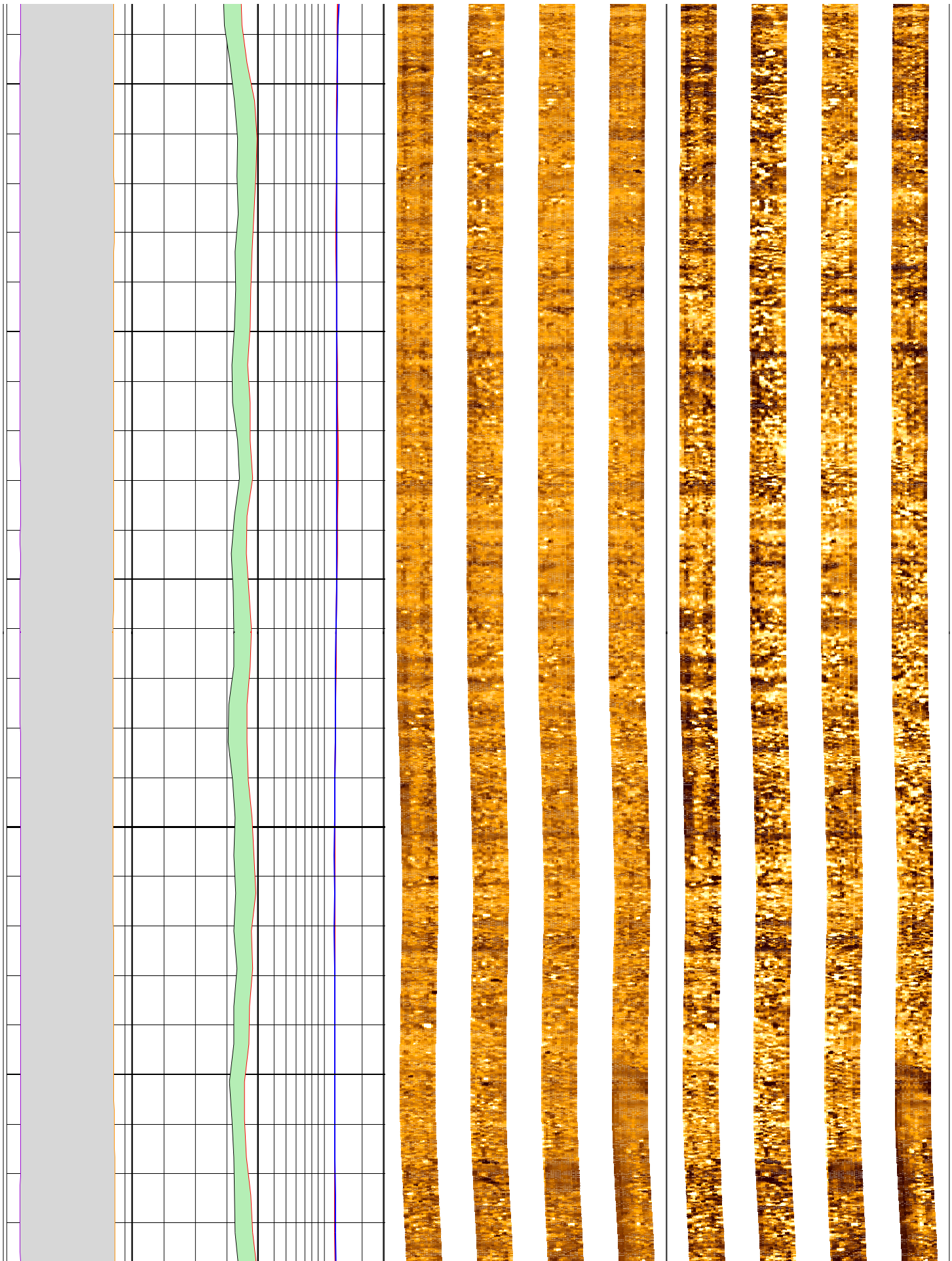
184

186



188

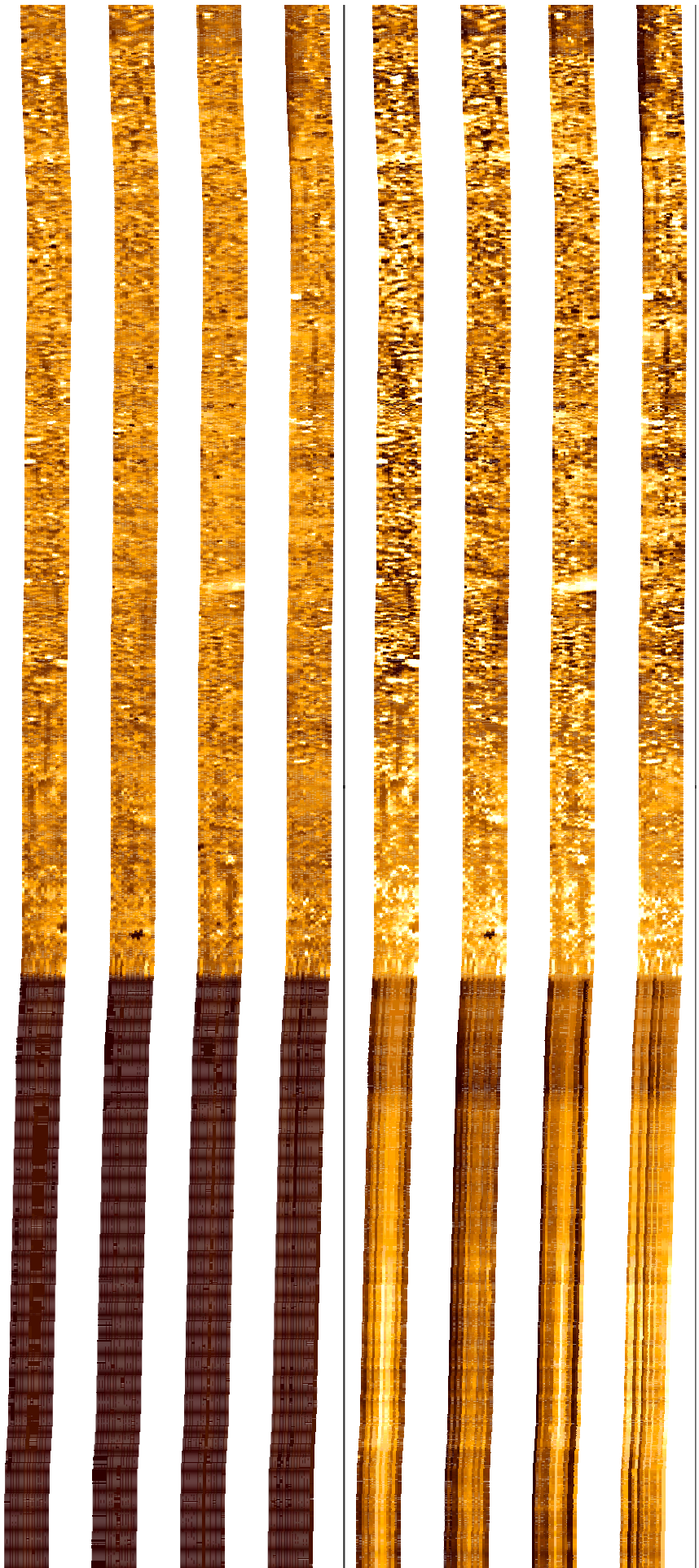
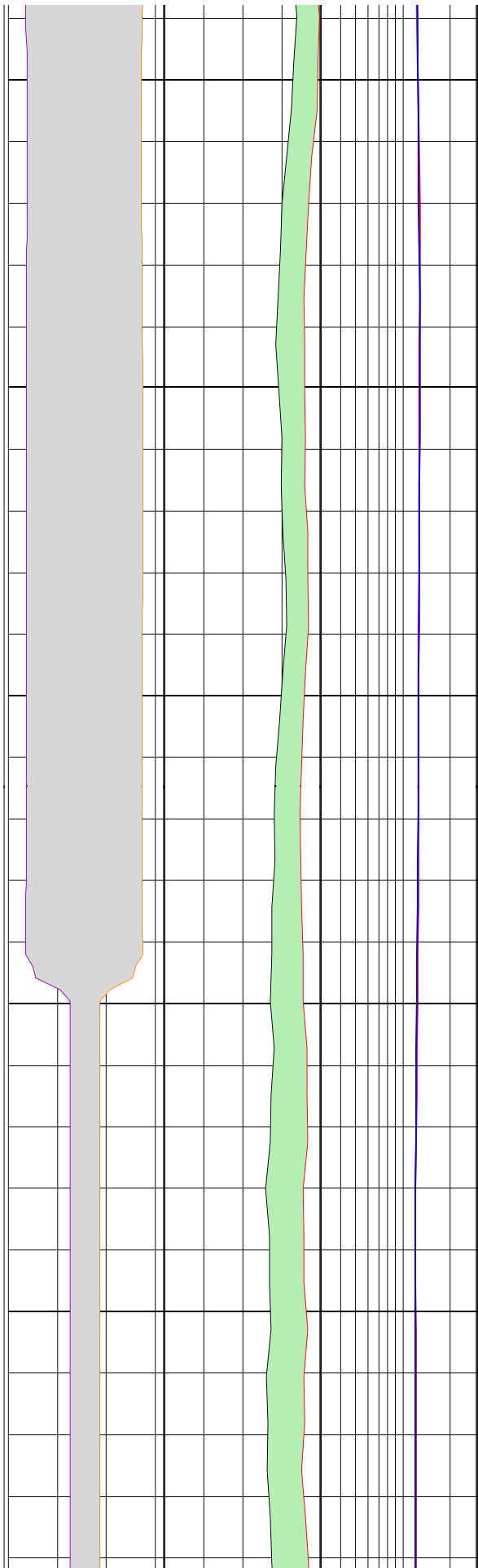
190



192

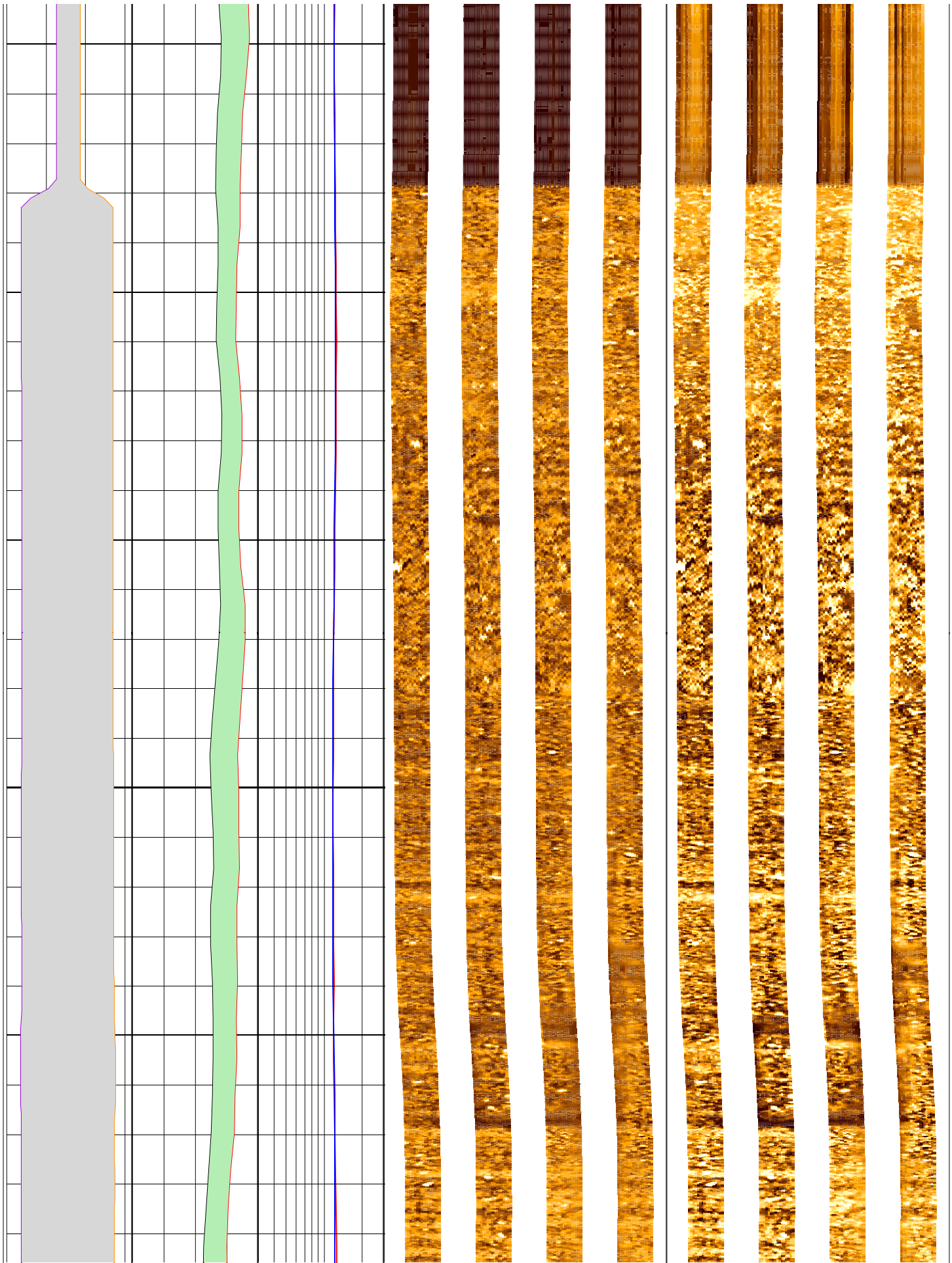
194

196



198

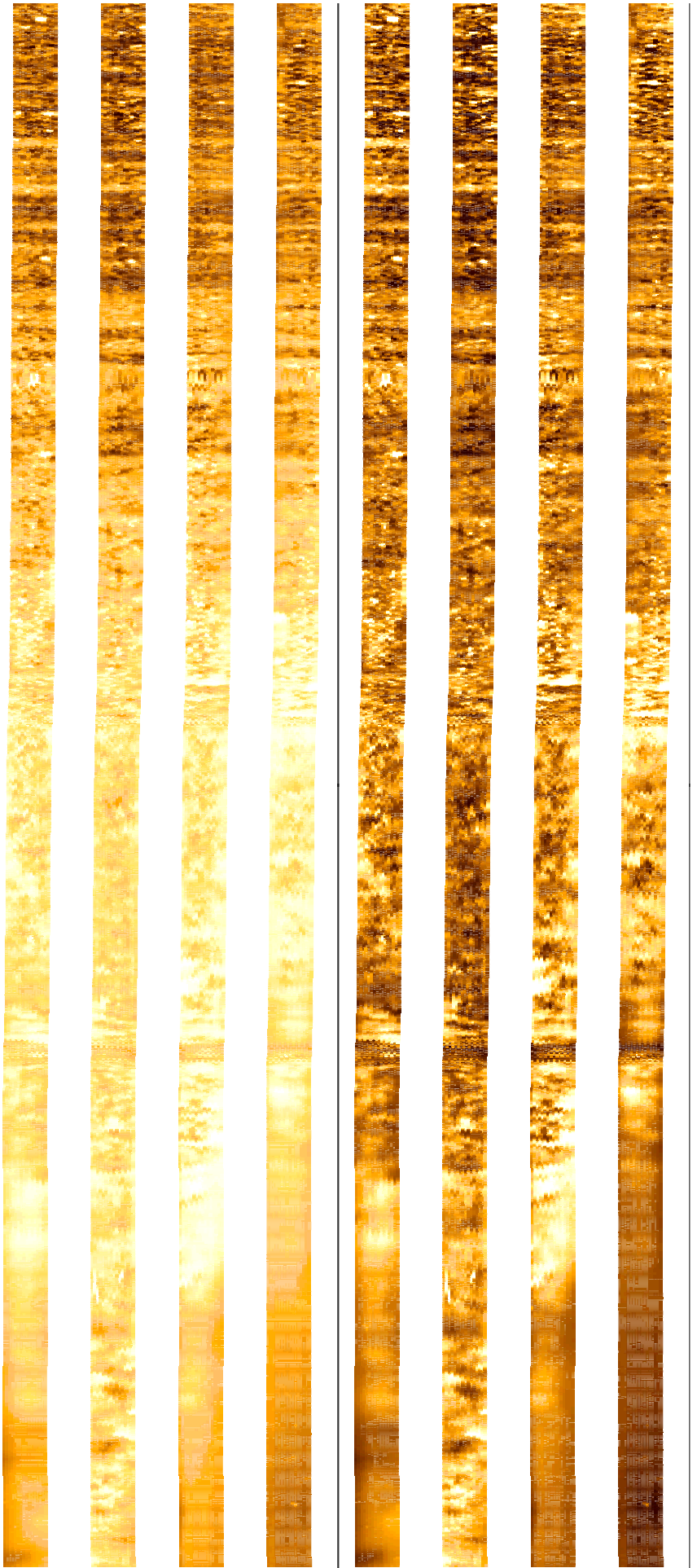
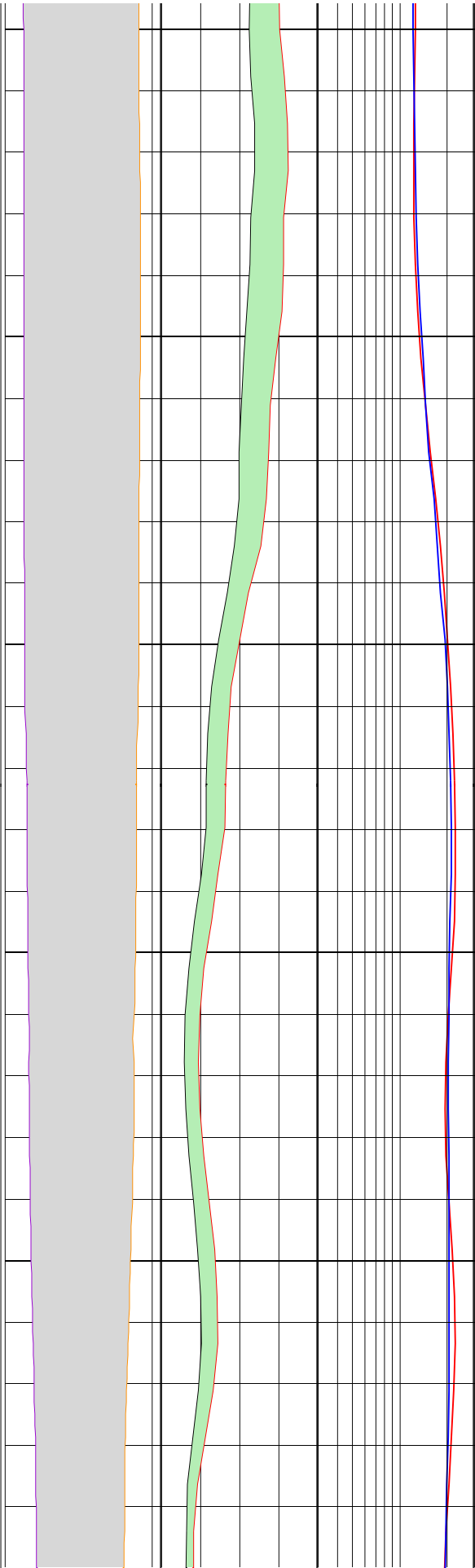
200



202

204

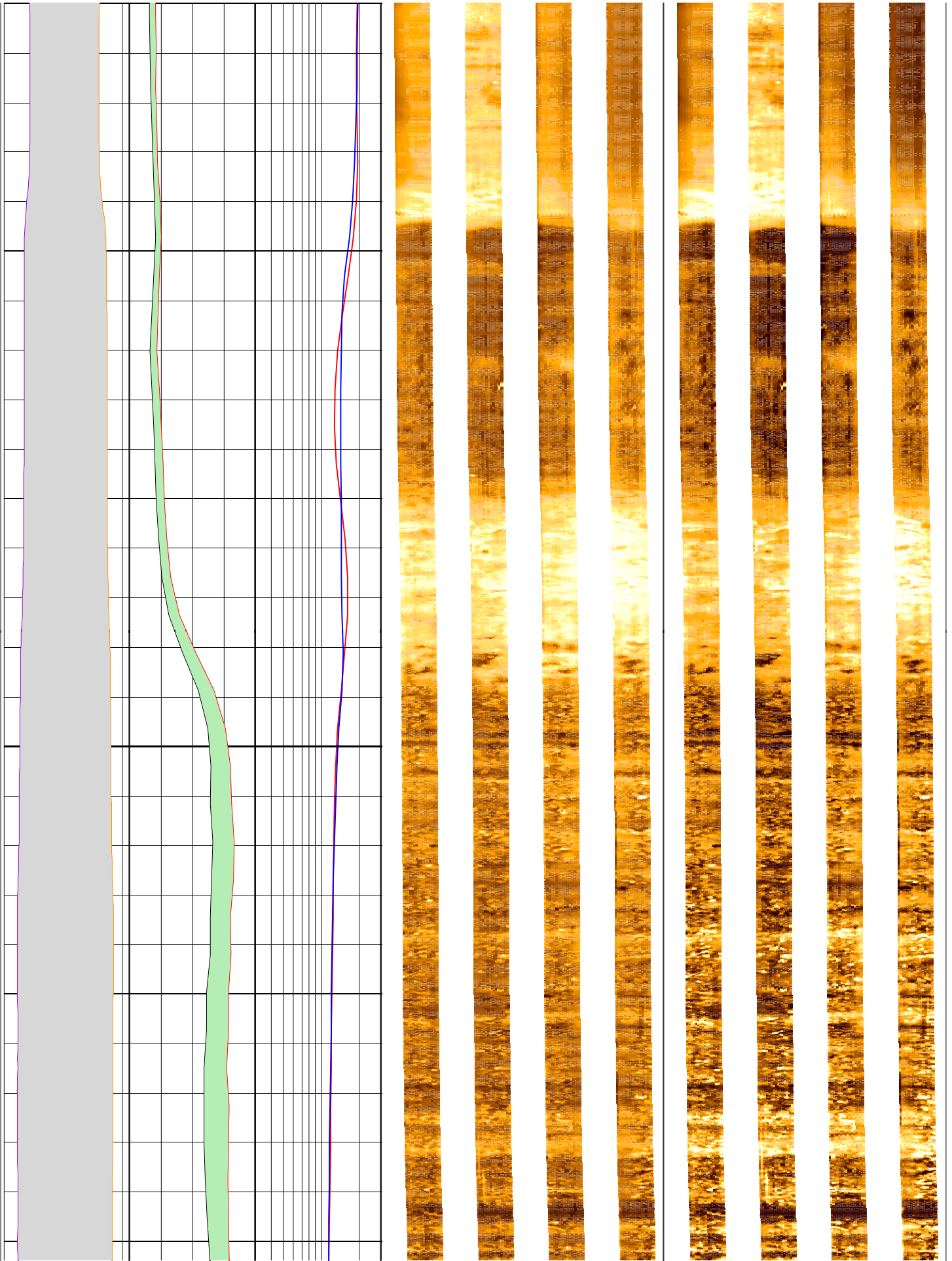
206



208

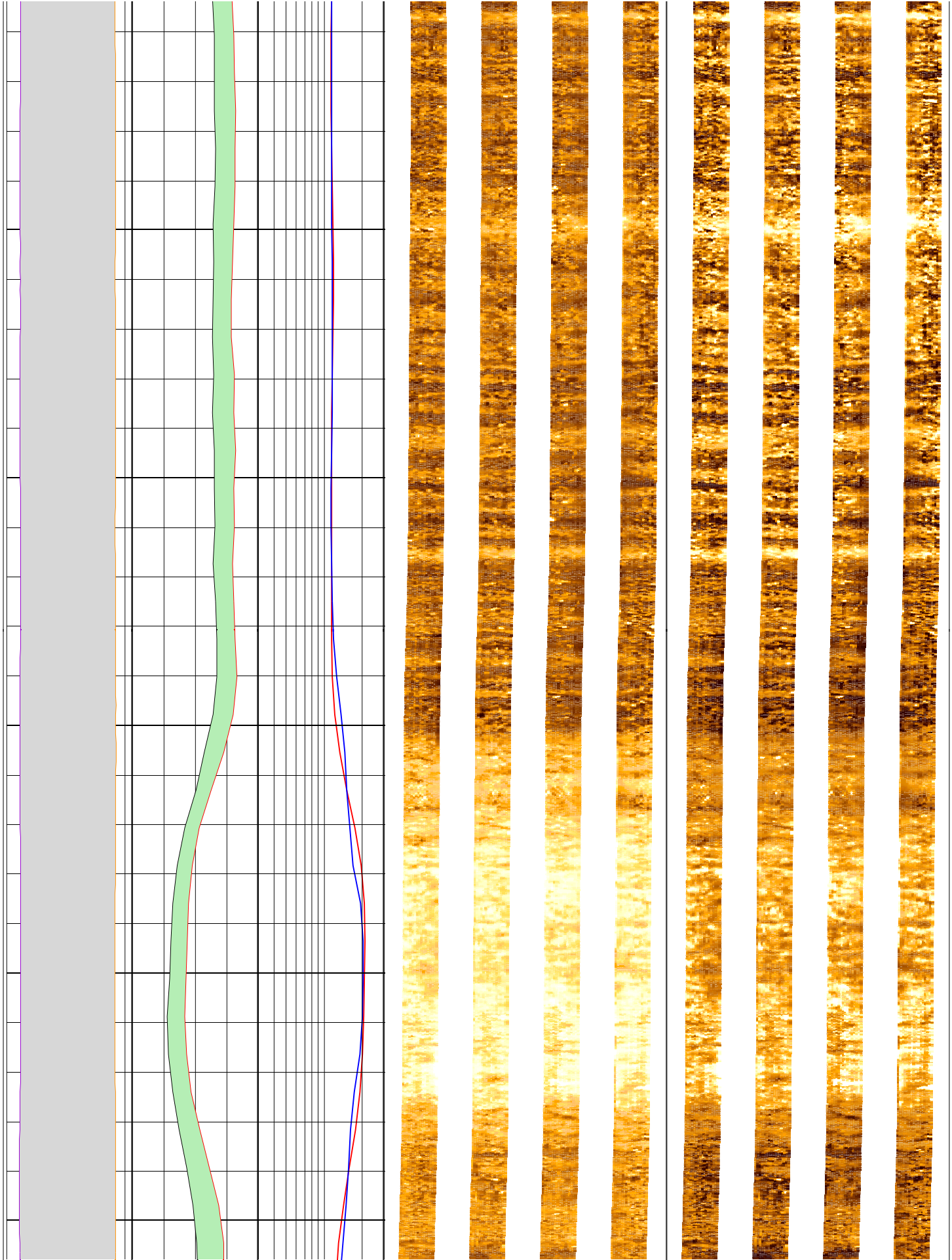
210

212



214

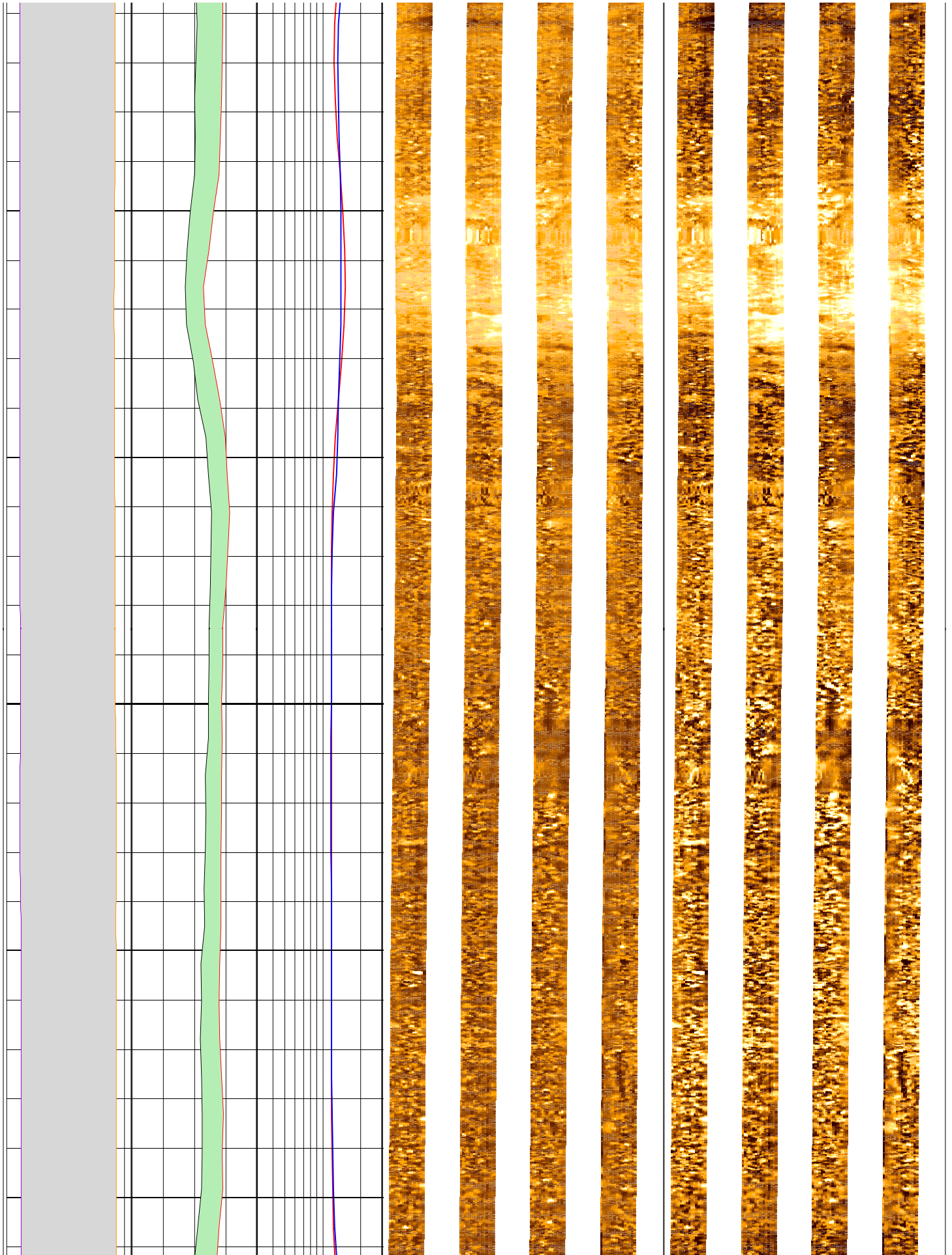
216



218

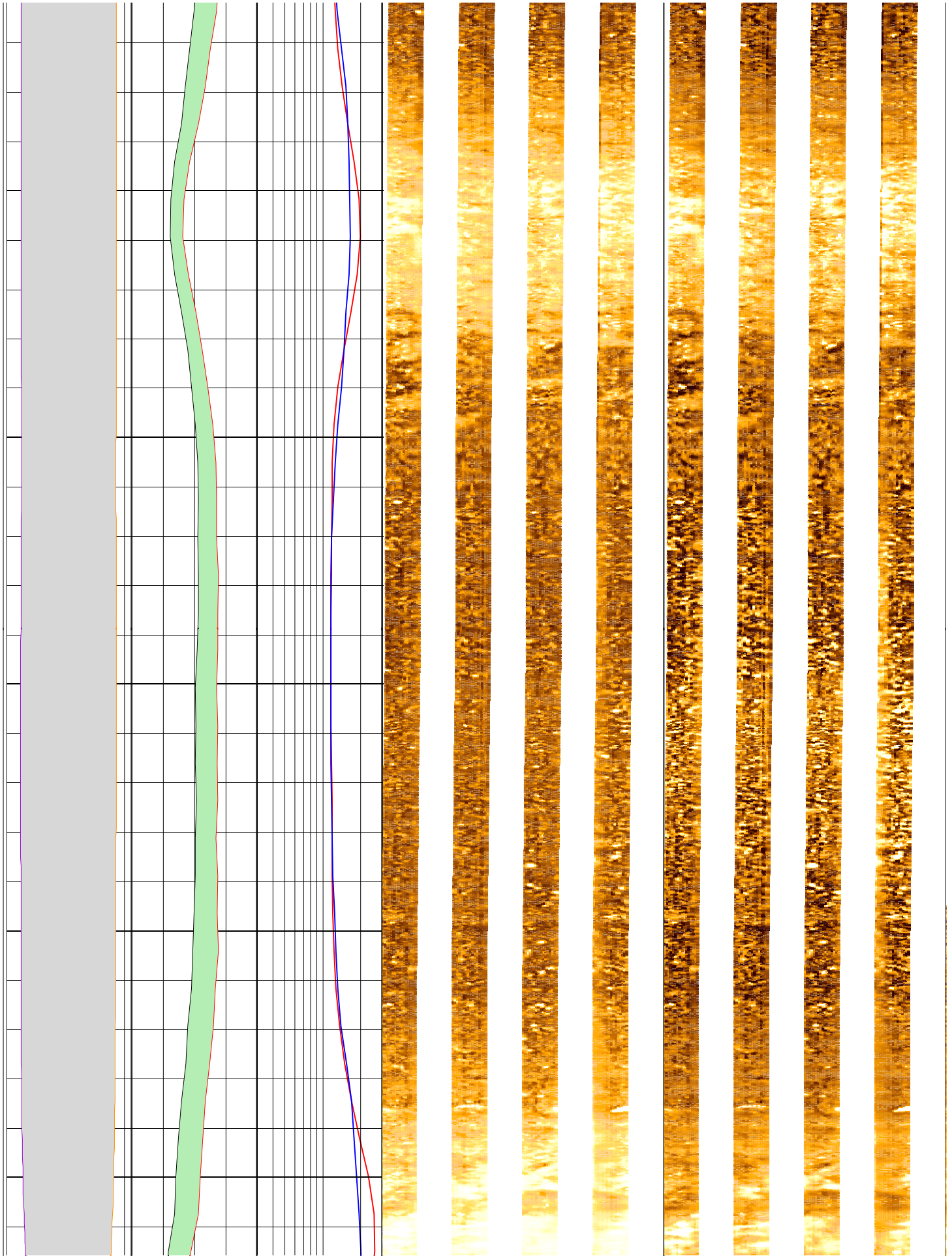
220

222



224

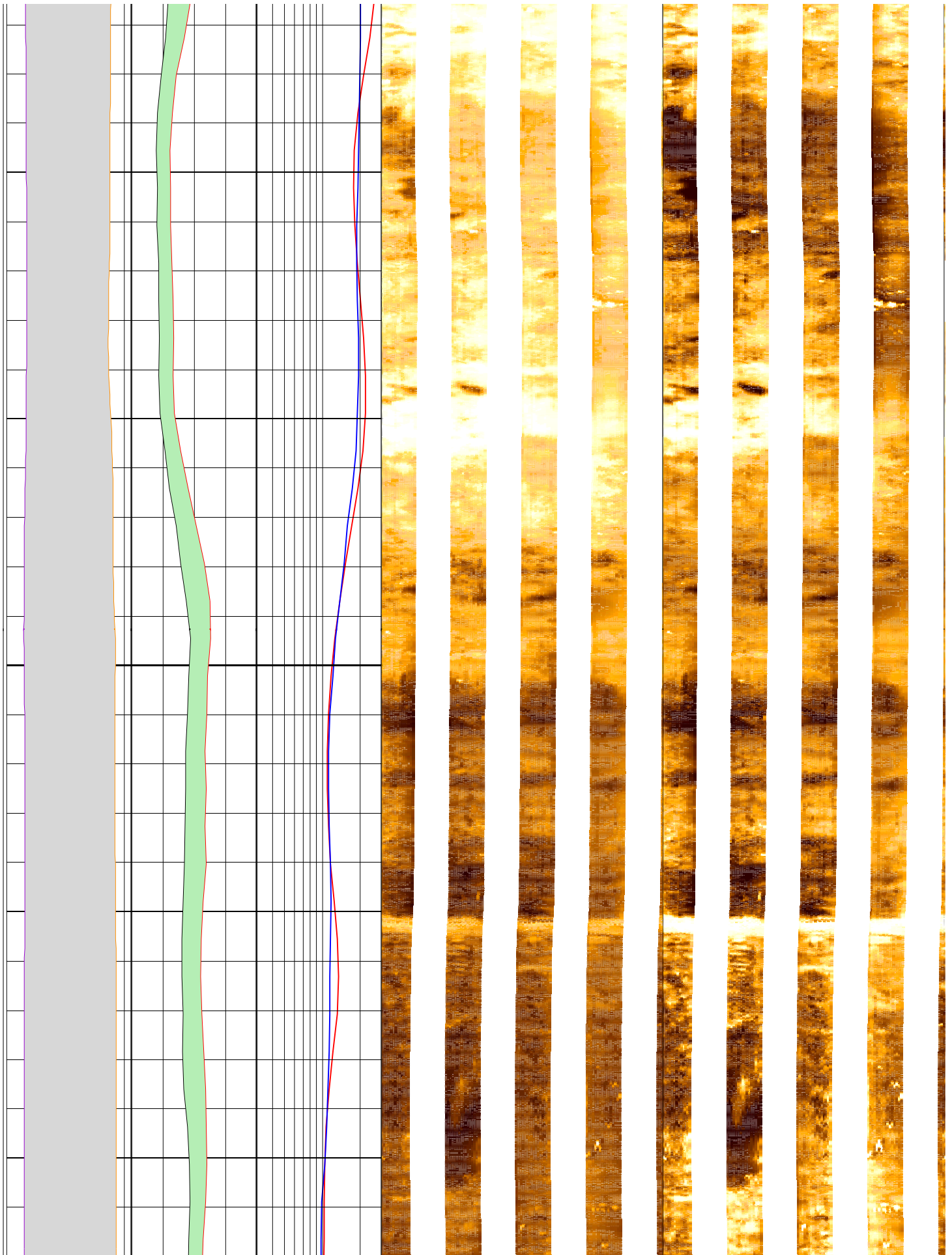
226



228

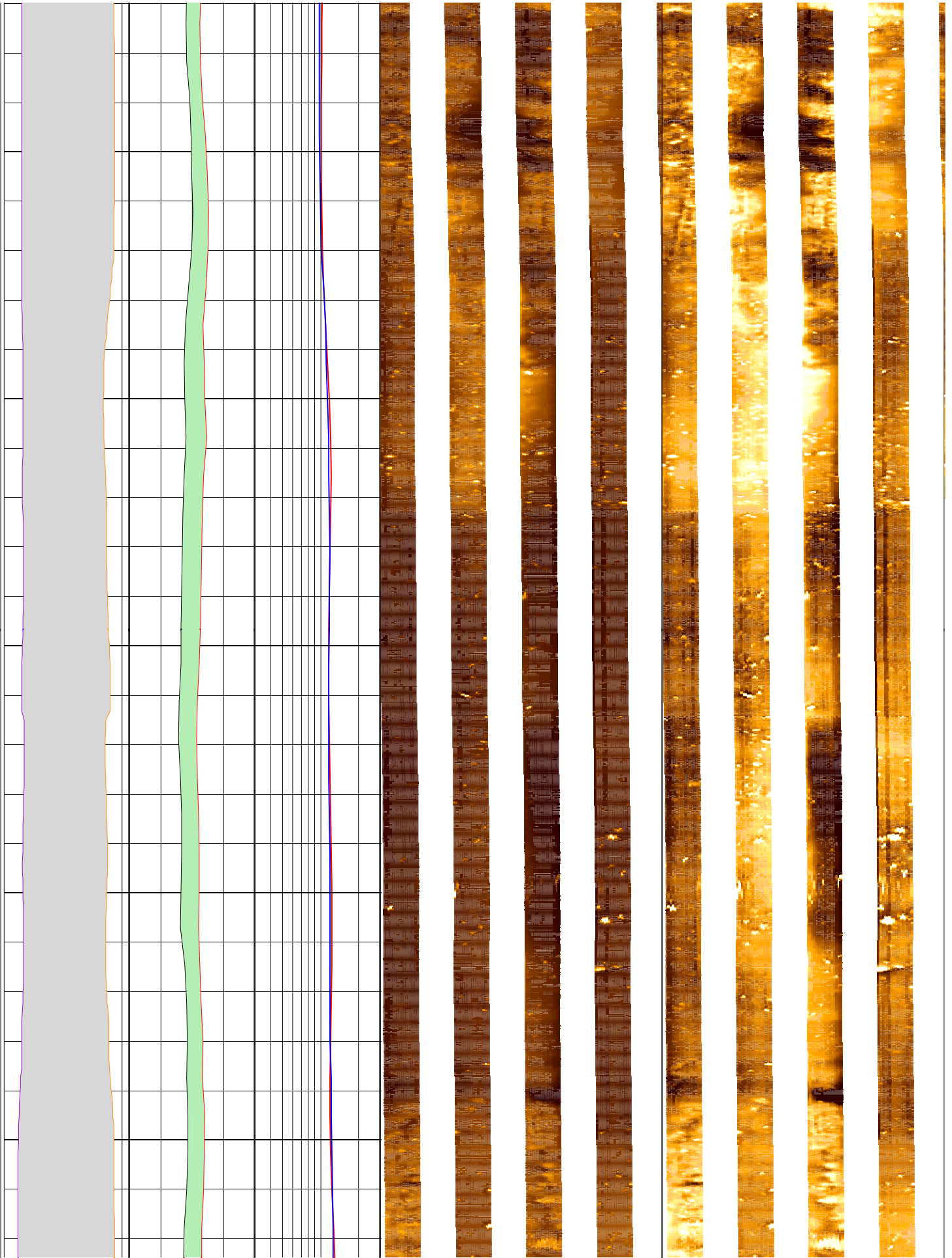
230

232



234

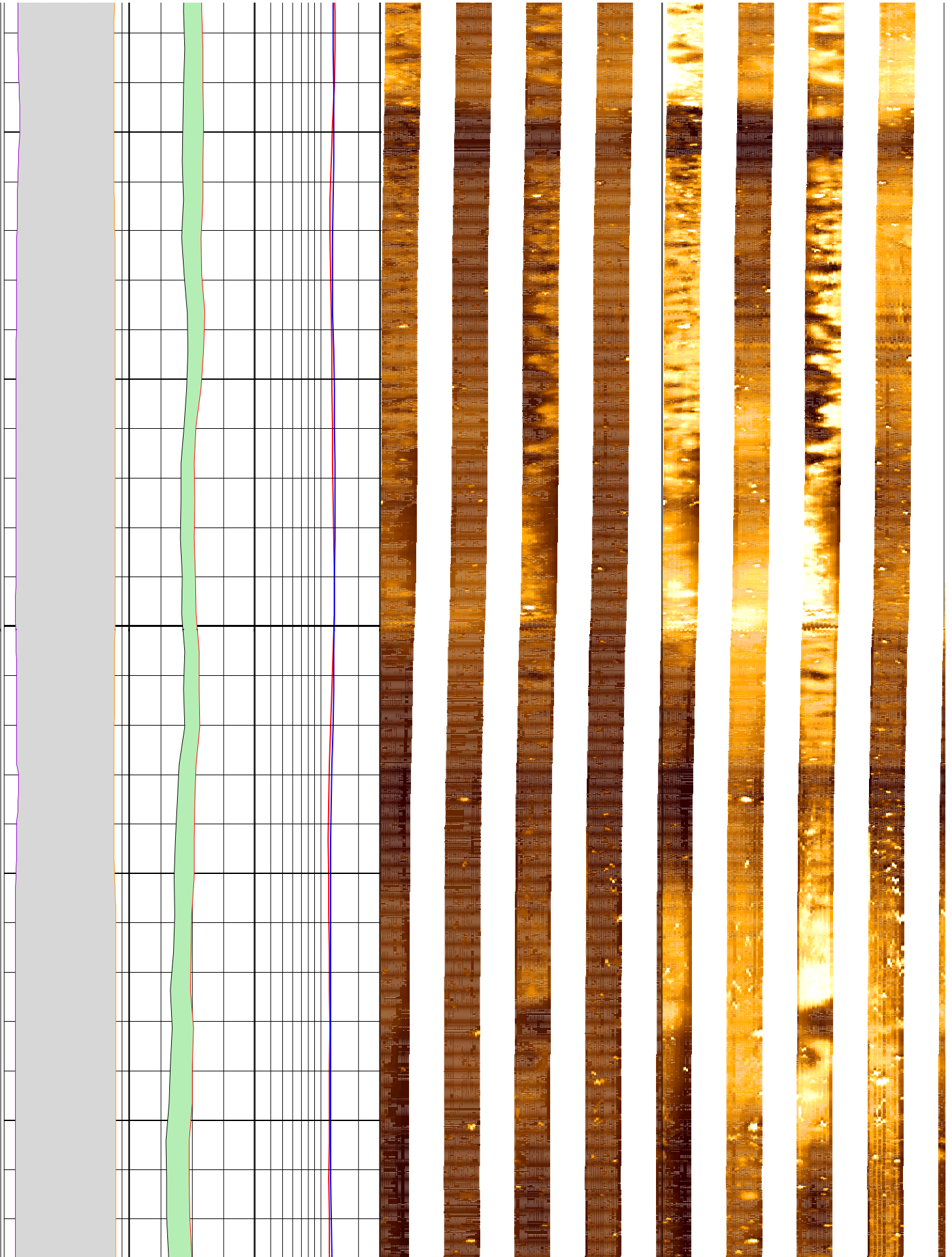
236



238

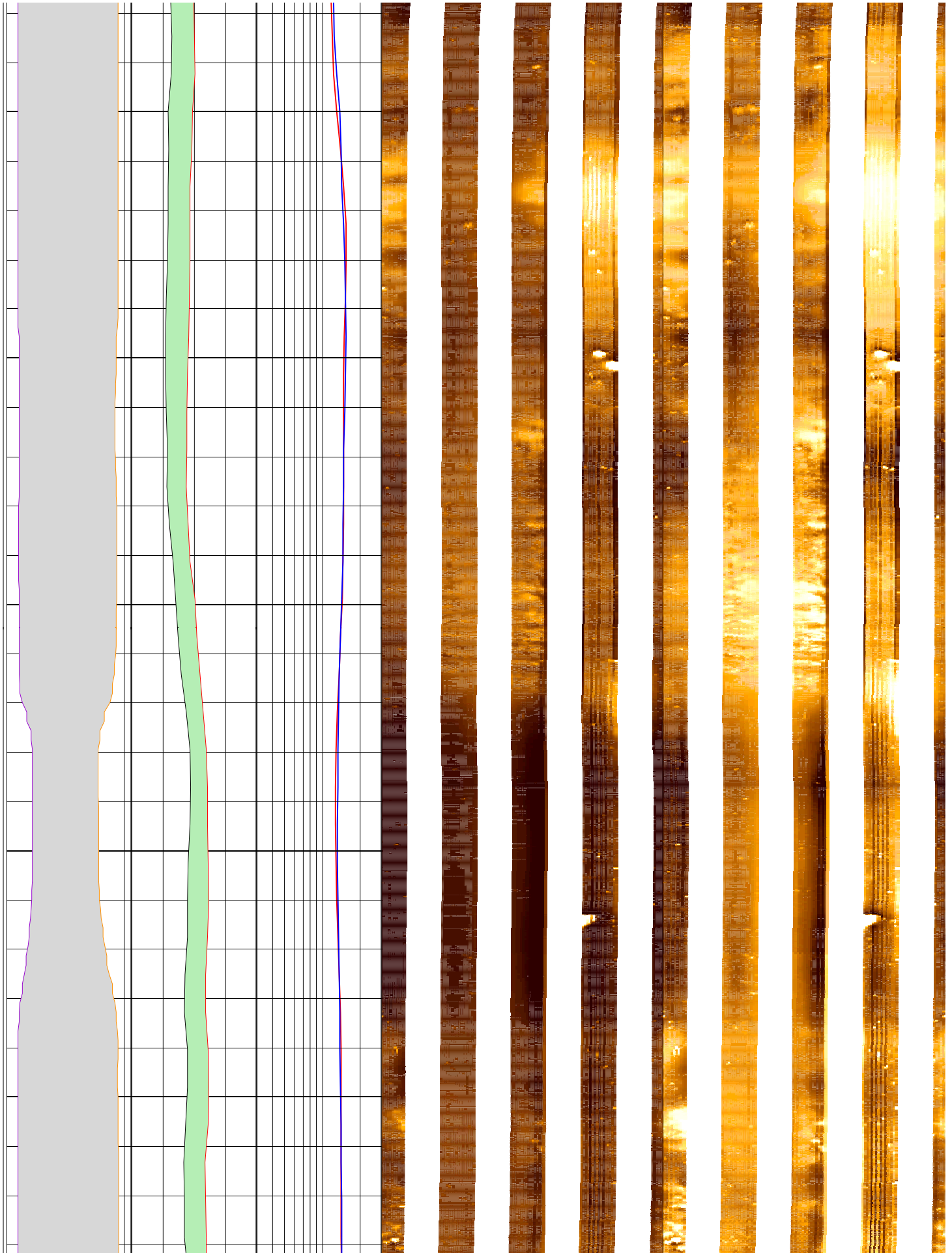
240

242



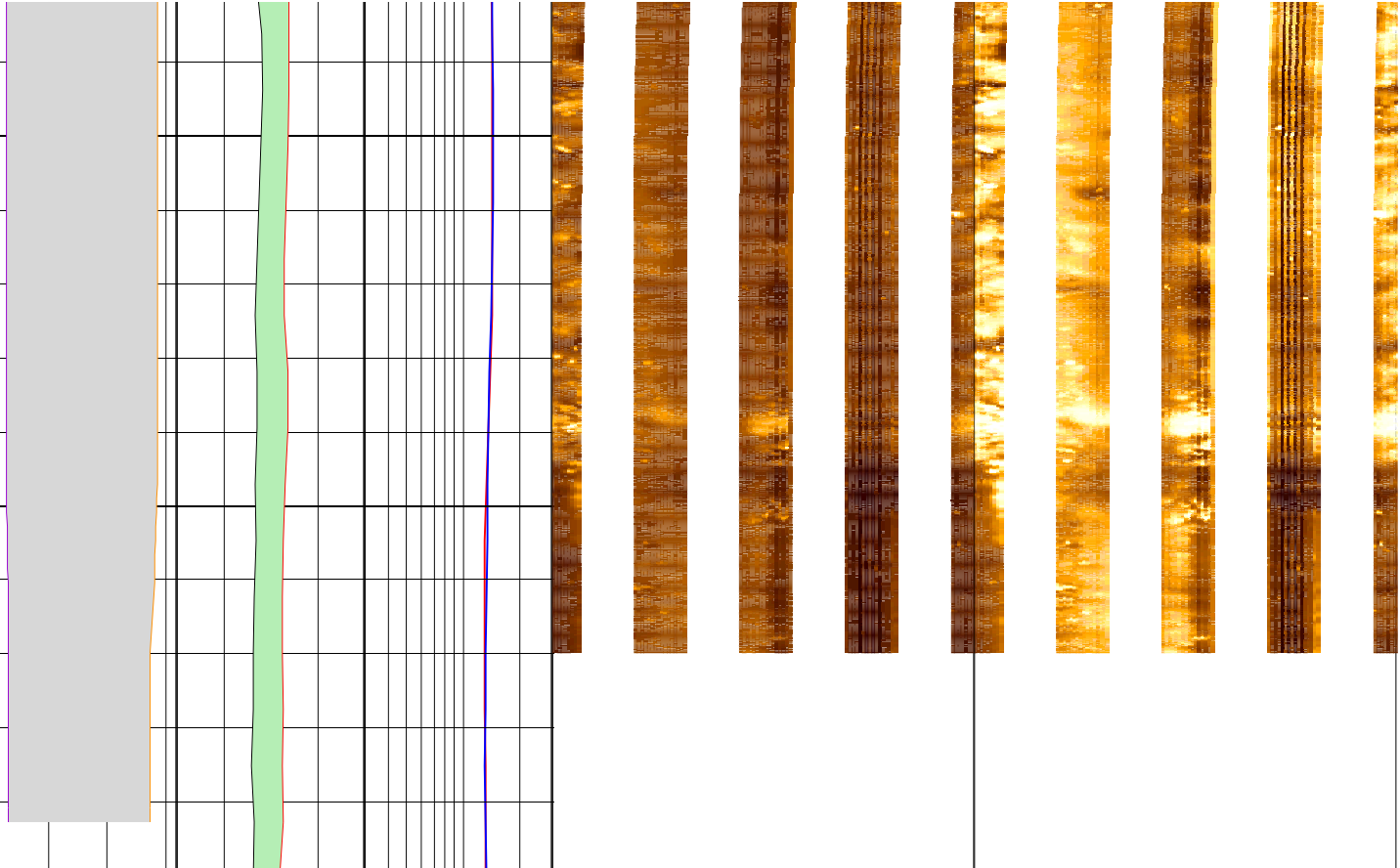
244

246



248

250
MD
1 : 20
m



	lgp_Area_	lgp_Area_	IDPH_DIT 0.3 (ohm.m) 3	FMS_p1_static Horizontal Scale: 1 : 6.981 Orientation North		FMS_p1-dynamic Horizontal Scale: 1 : 6.981 Orientation North	
	C1_FMS_p1 20 (in) -20	HCGR_DIT 0 (gAPI)100	IMPH_DIT 0.3 (ohm.m) 3	0	120	240	360
	C2_FMS_p1 -20 (in) 20	HSGR_DIT 0 (gAPI)100		Resistive FMS4 Image Conductive		Resistive FMS4 Image Conductive	

