

Processed FMS Images Depth Unit: m WMSF

COMPANY: Lamont Doherty

WELL: Expedition 317 Hole U1353C

FIELD: Canterbury Basin

Ocean: Pacific

COUNTRY: USA

Date Processed: 28-Dec-2009

Job Number: Processed at:

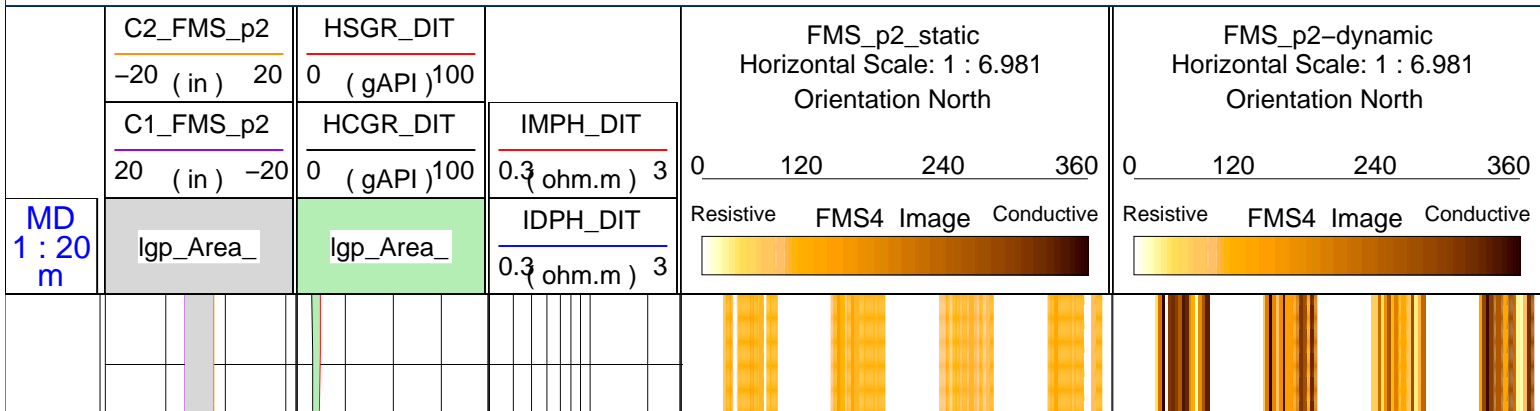
Well Location:

Latitude: S 44° 46.0982' Longitude: E 171° 40.4380'

Elevations: KB: 11m DF: 11m GL: -93.5m

FOLD HERE The well name, location and borehole reference data were furnished by the customer.

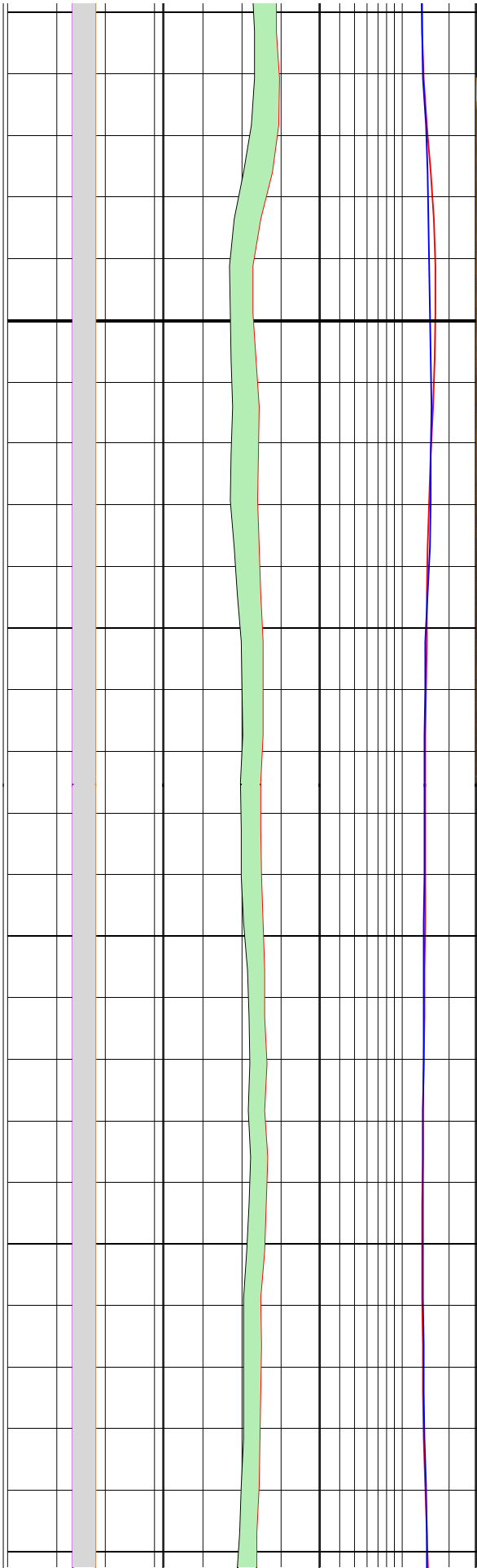
All interpretations are opinions based on inferences from electrical or other measurements and we cannot, and do not guarantee the accuracy or correctness of any interpretation, and we shall not, except in the case of gross or willful negligence on our part, be liable or responsible for any loss, costs, damages or expenses incurred or sustained by anyone resulting from any interpretations made by any of our officers, agents or employees. These interpretations are also subject to Clause 4 of our General Terms and Conditions as set out in our current Price Schedule.



140

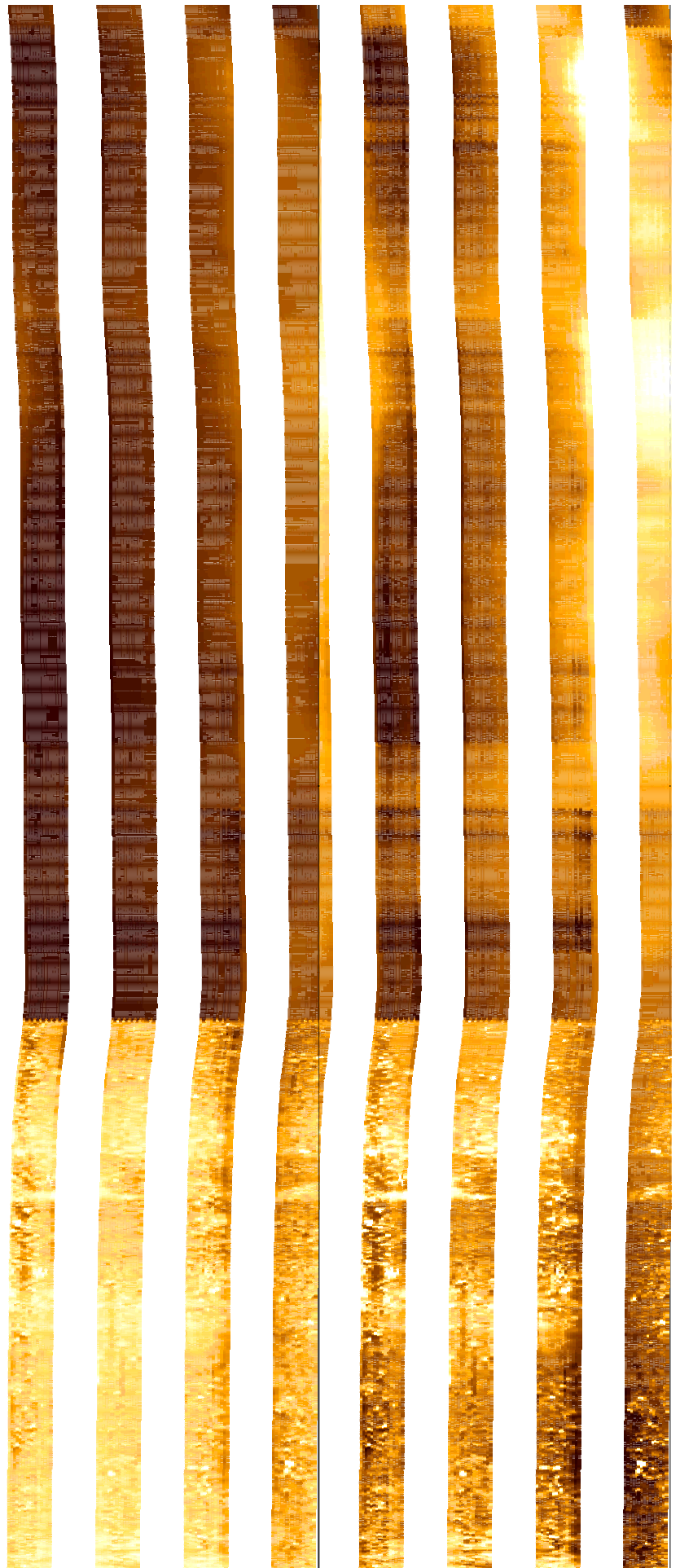
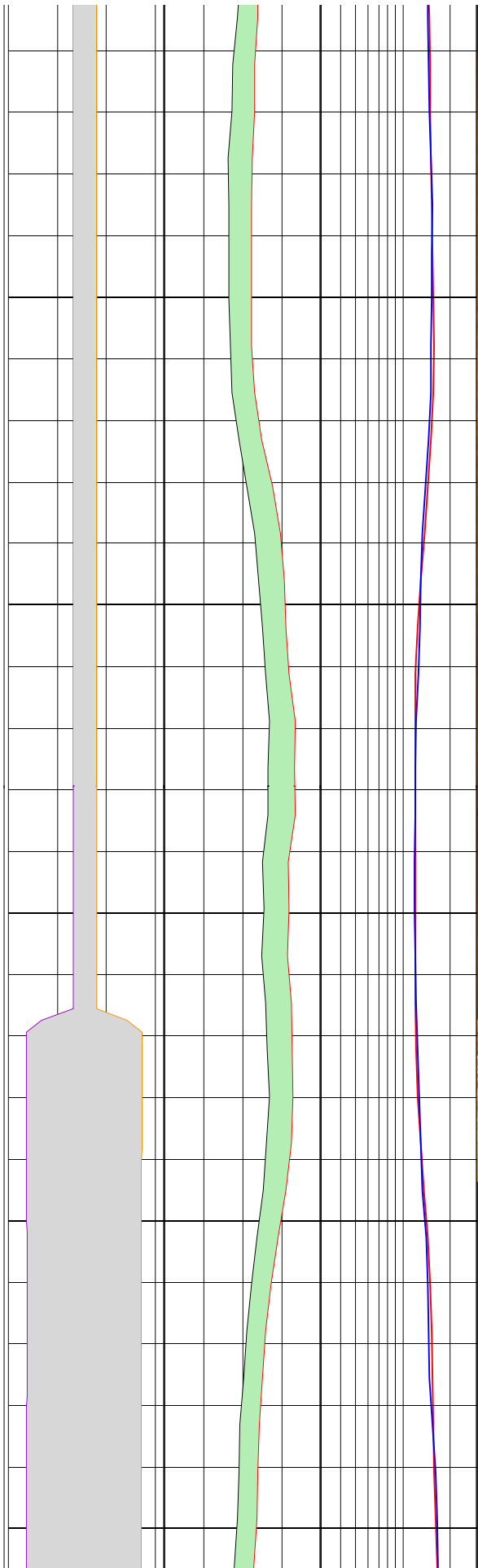
142

144



146

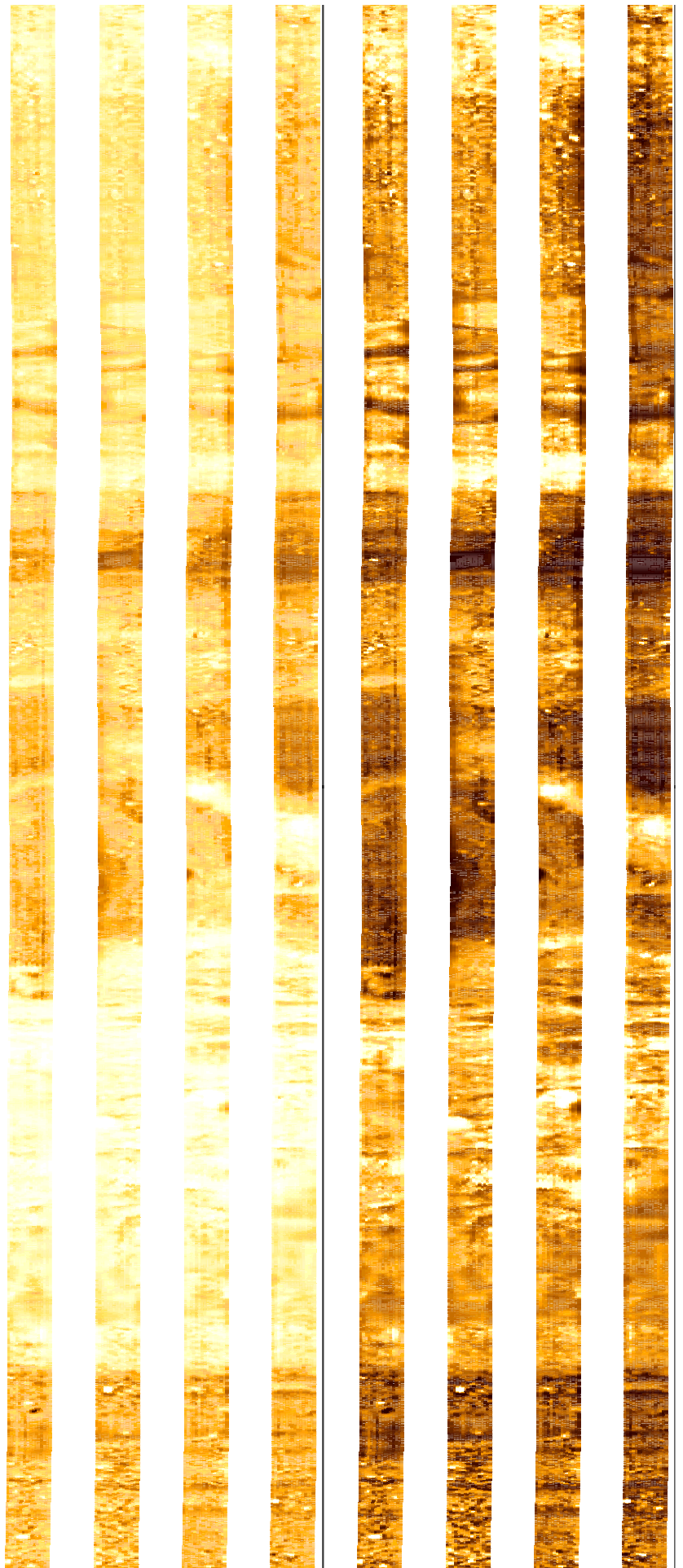
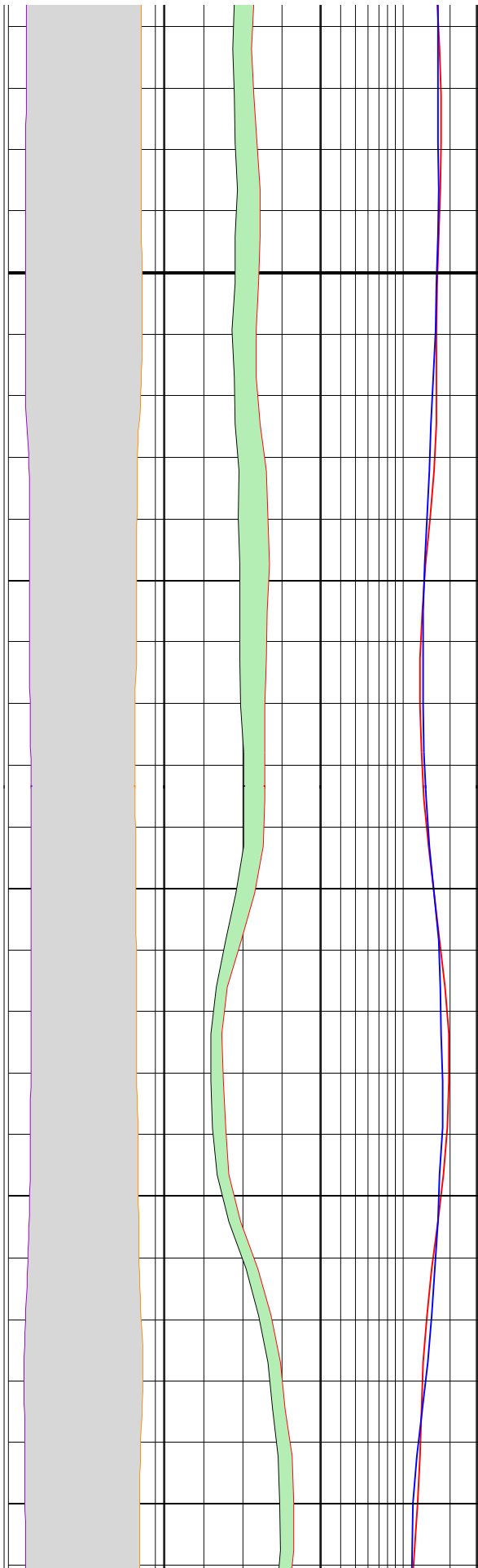
148



150

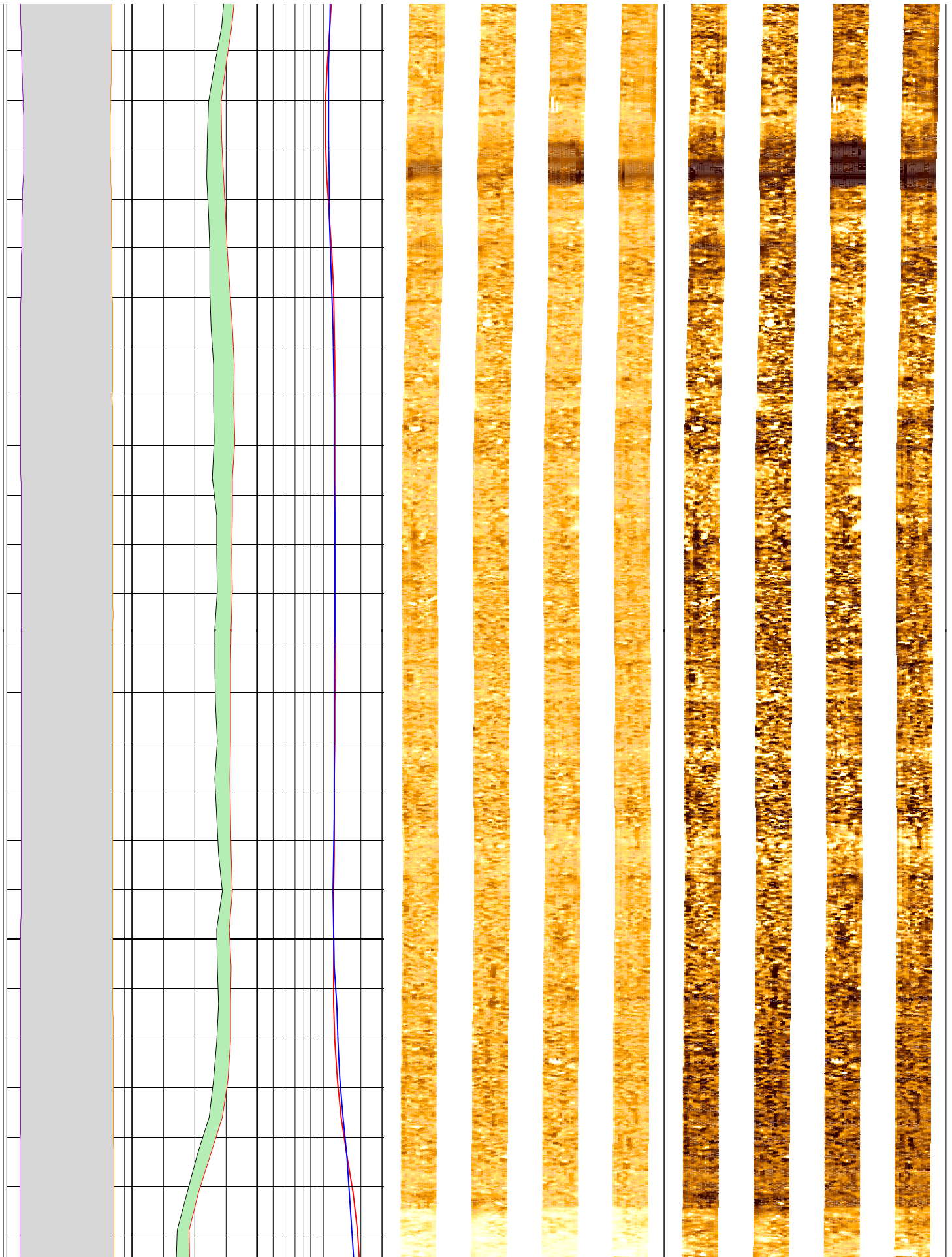
152

154



156

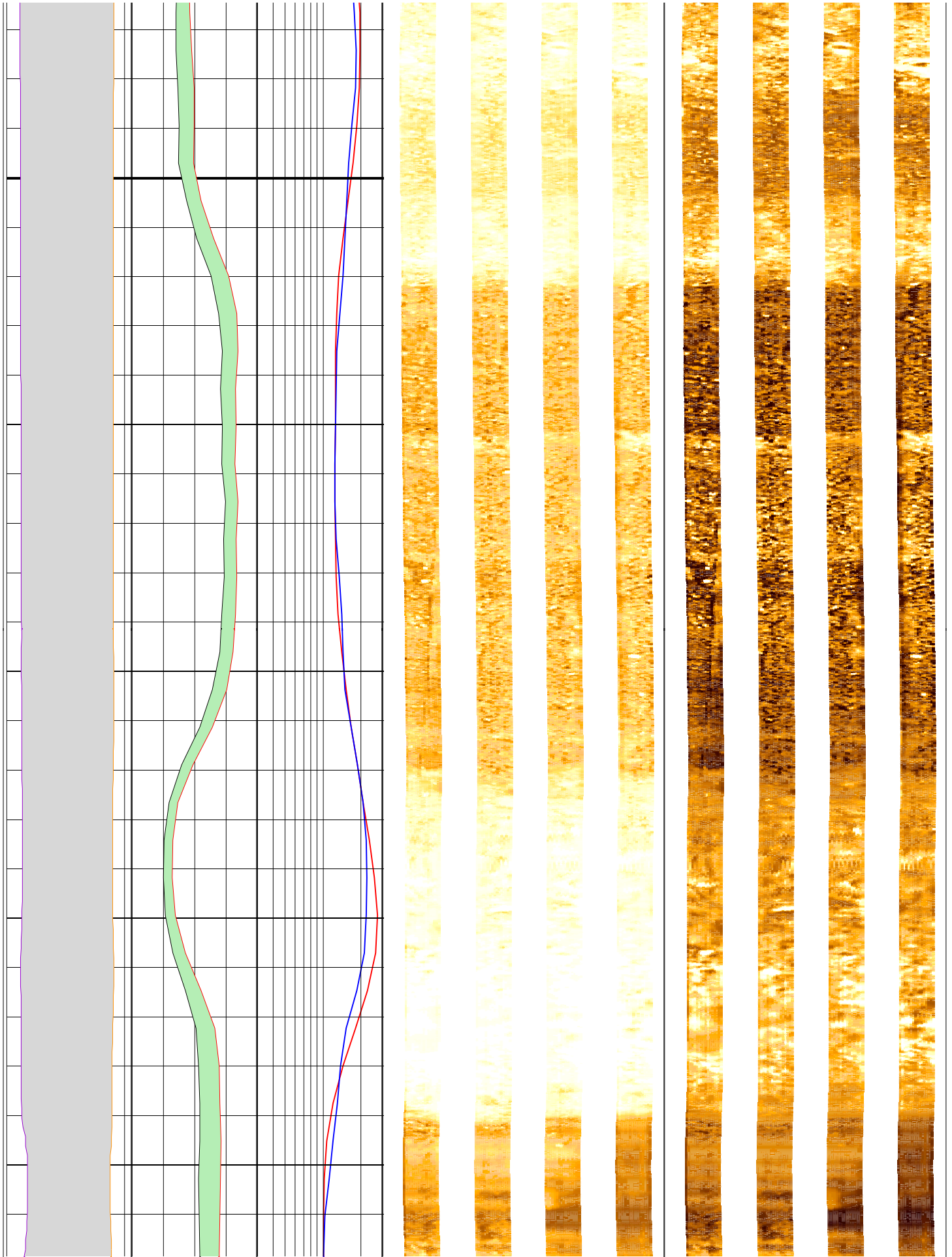
158



160

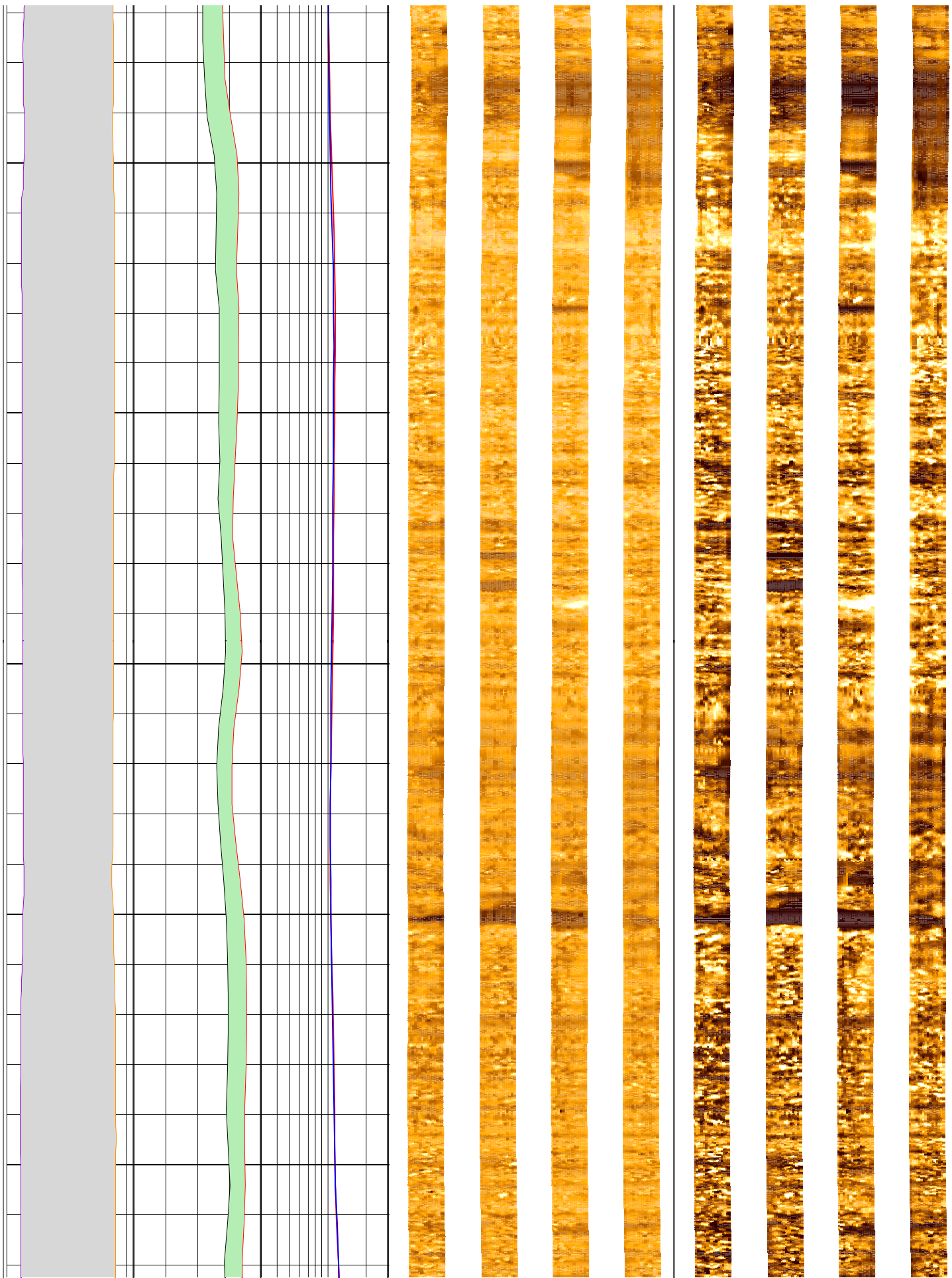
162

164



166

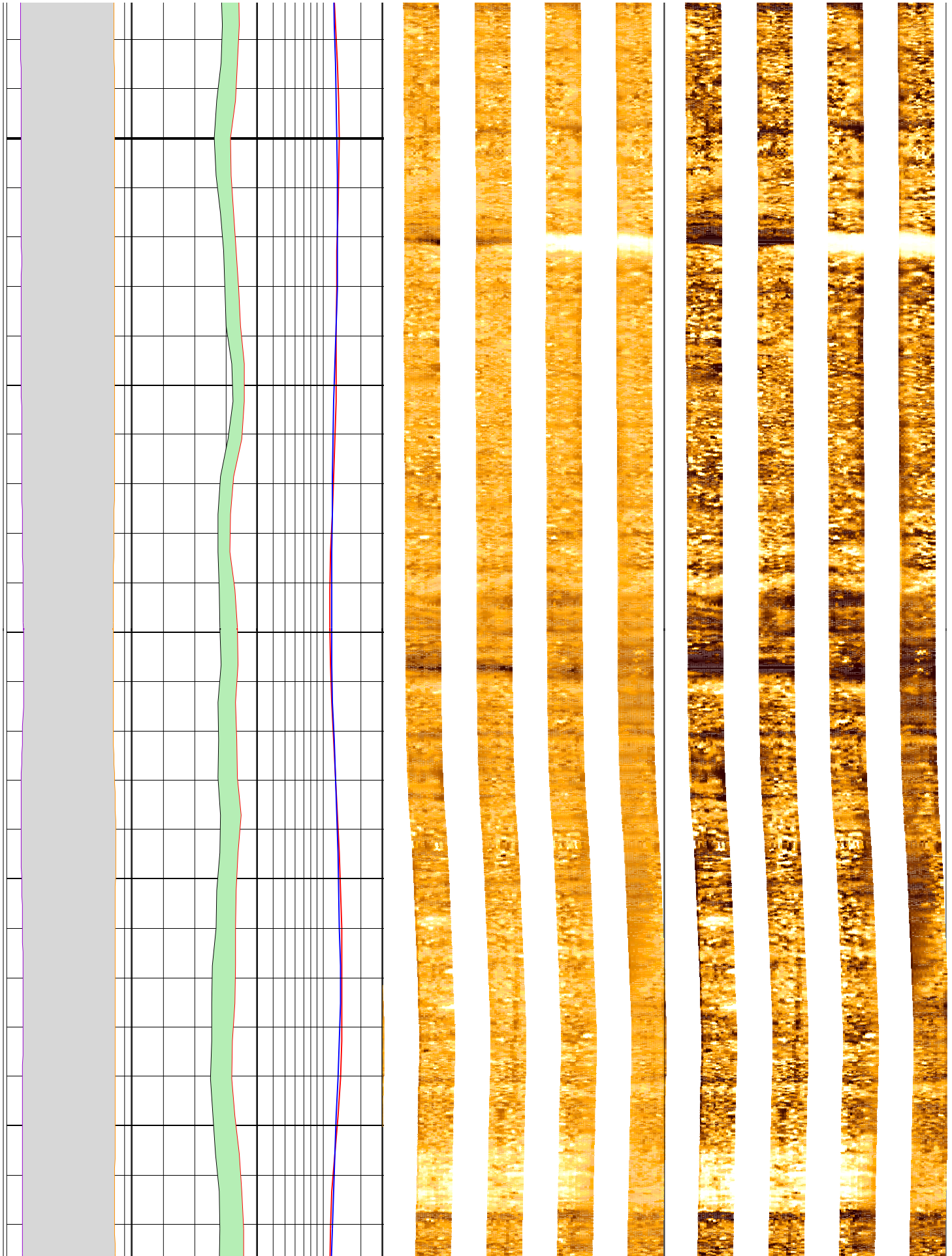
168



170

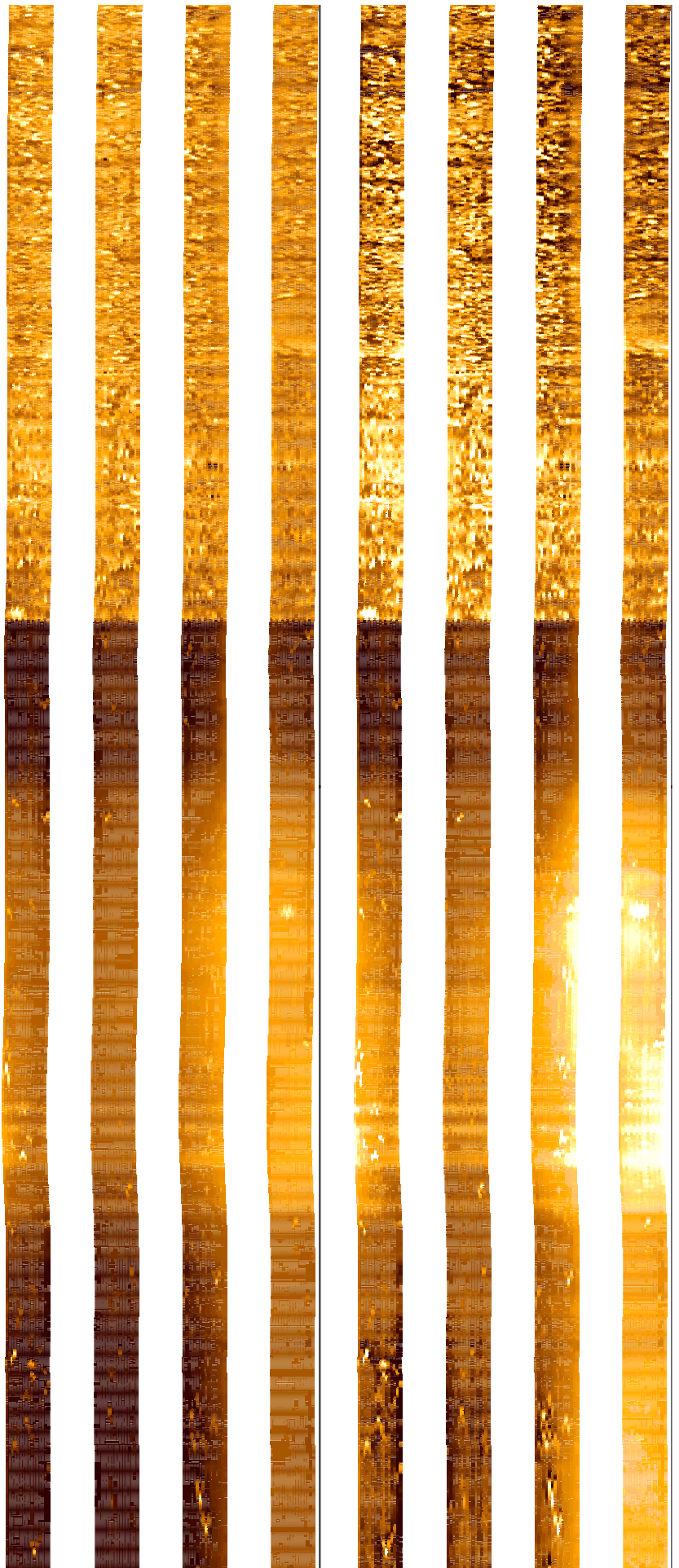
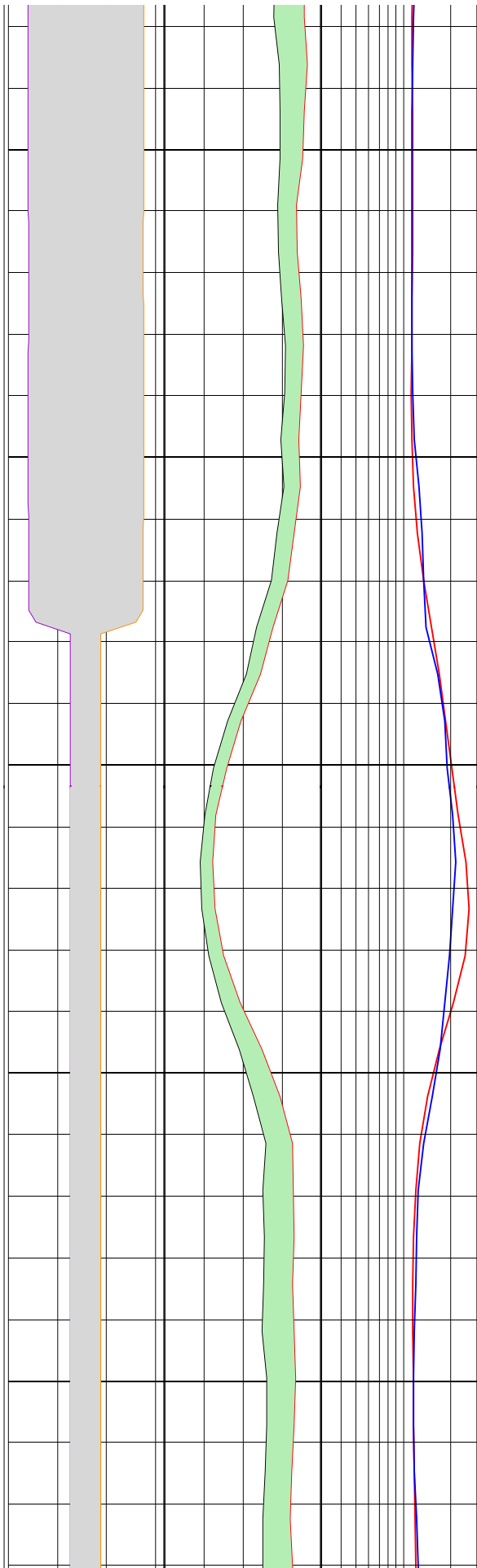
172

174



176

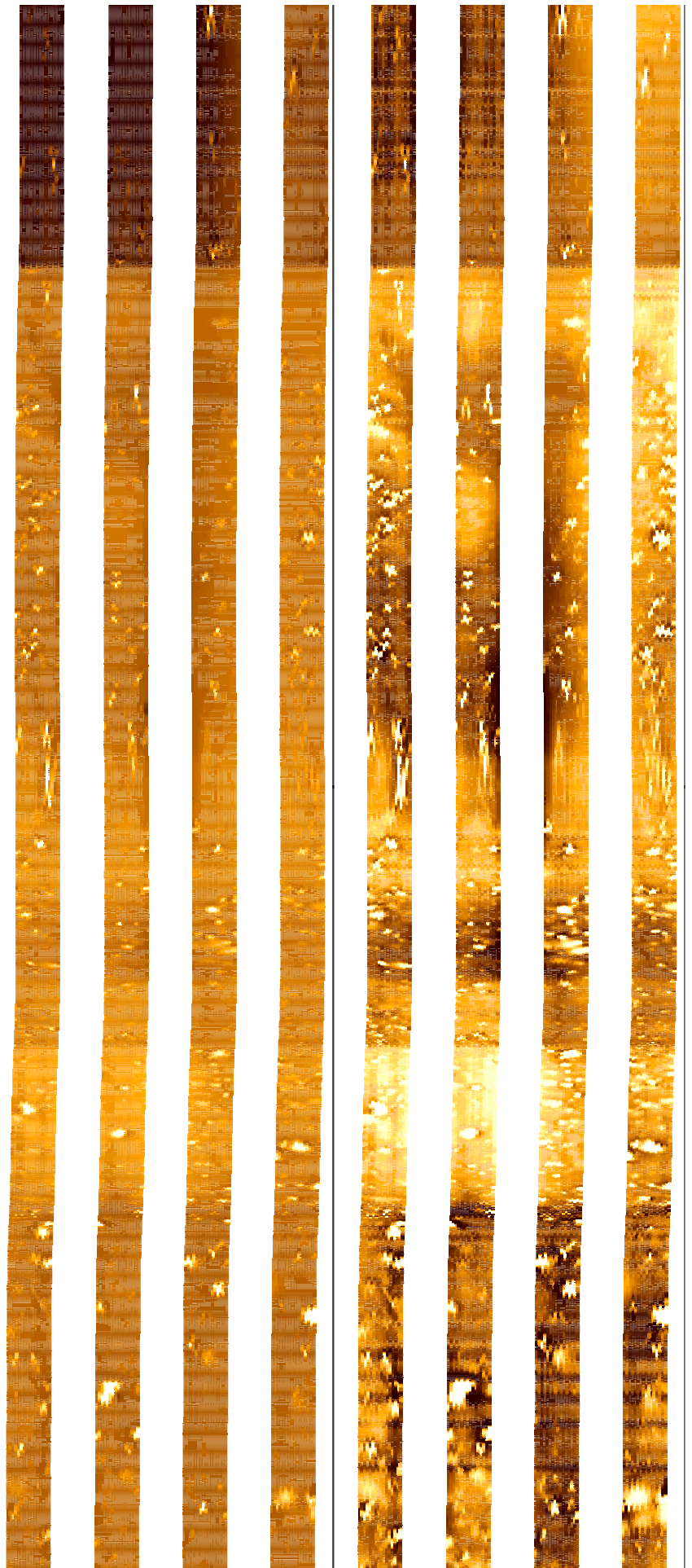
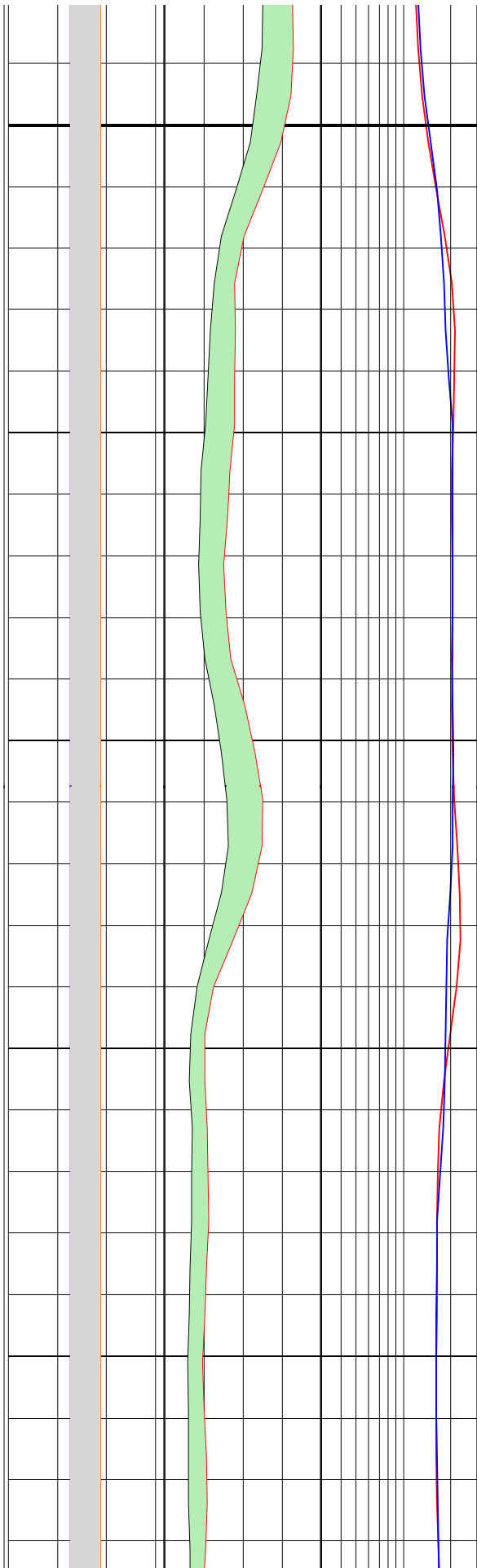
178



180

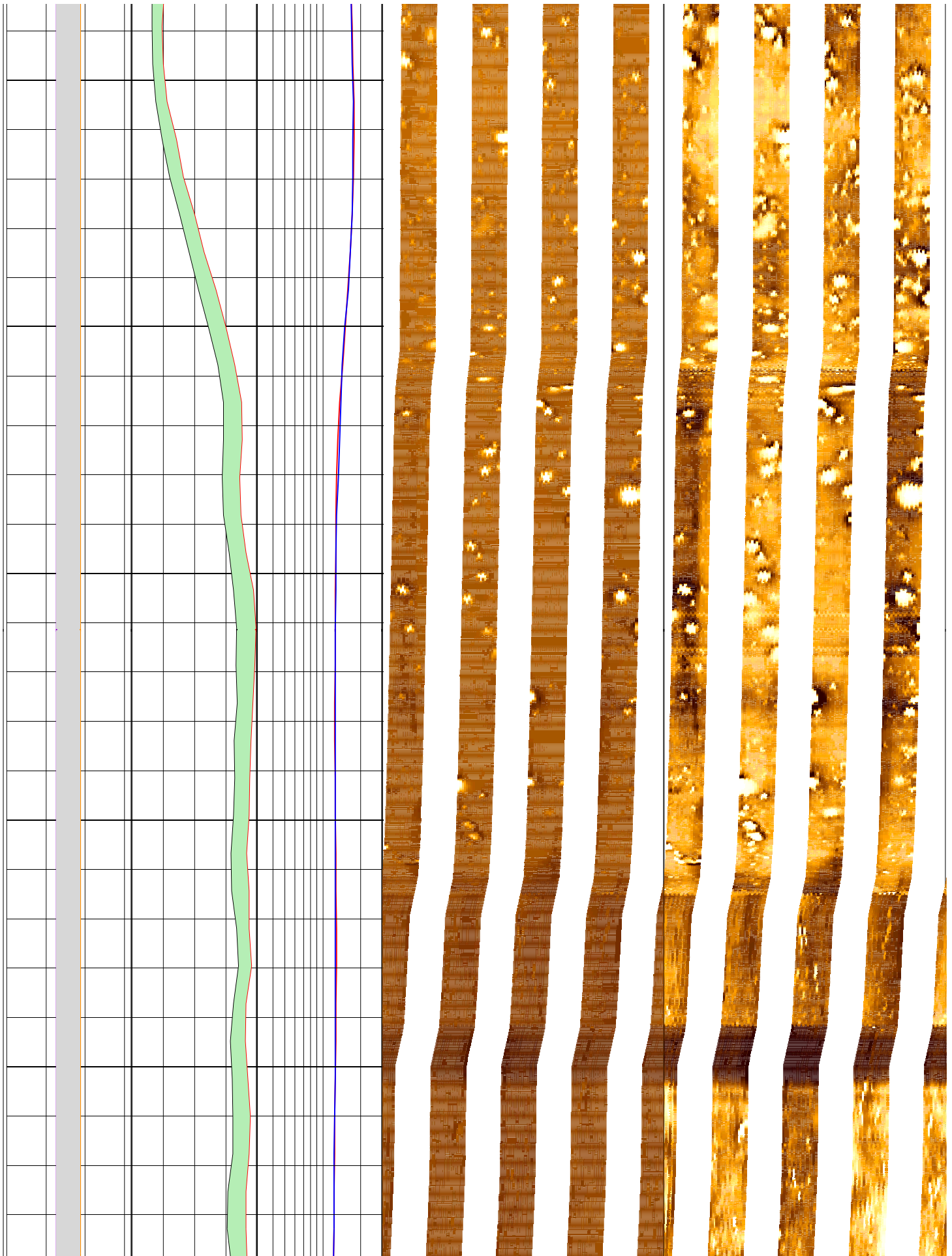
182

184



186

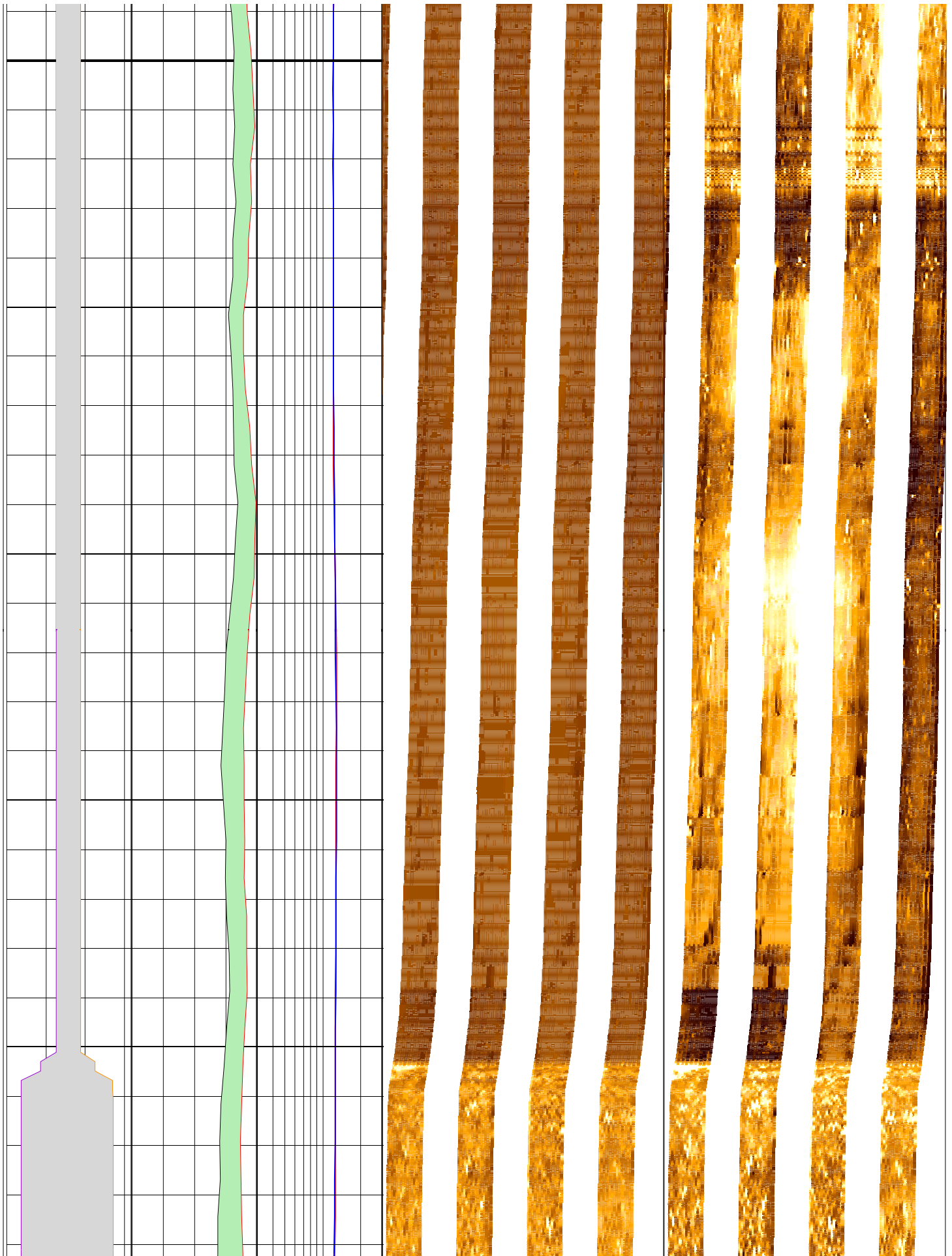
188



190

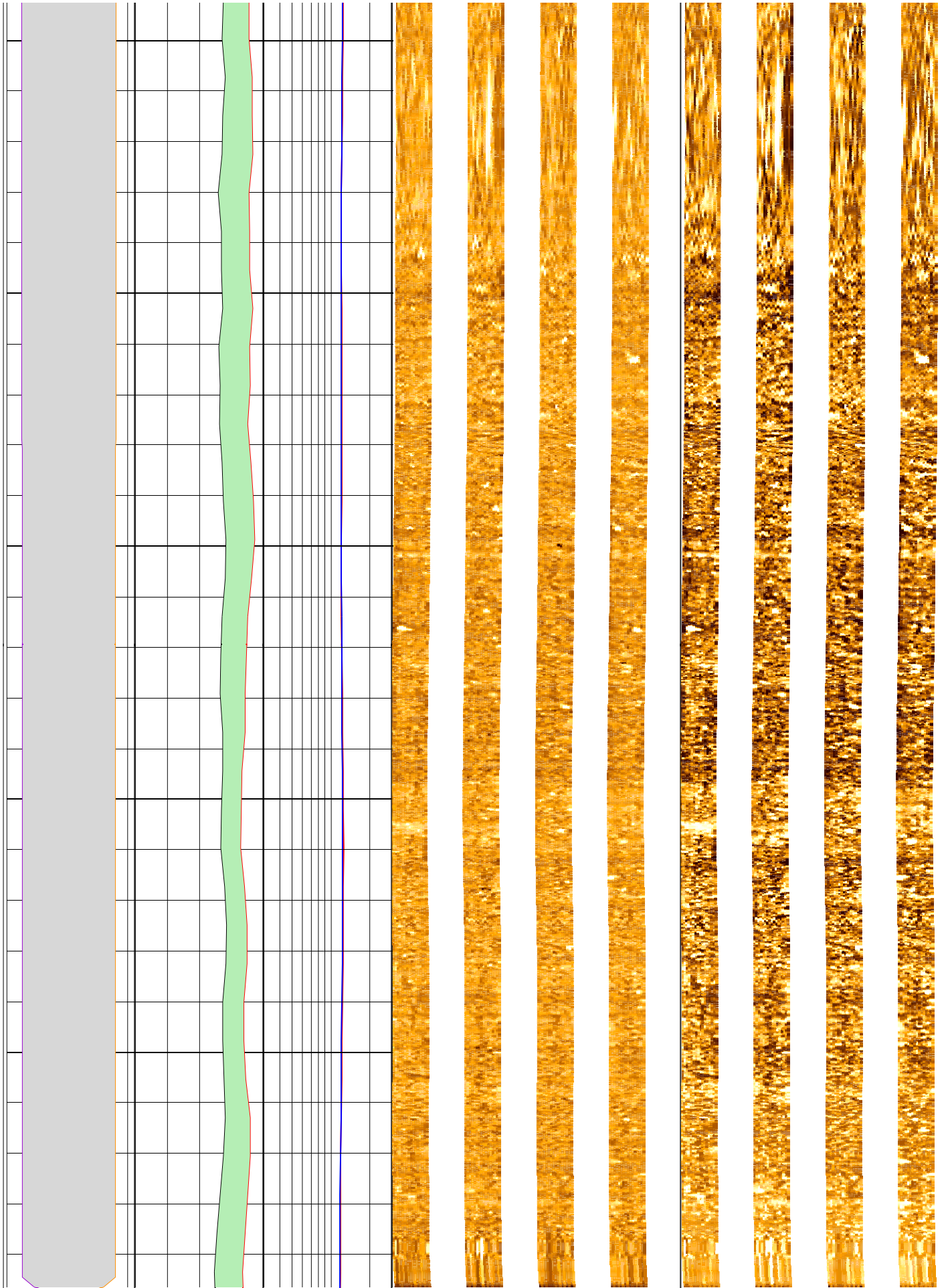
192

194



196

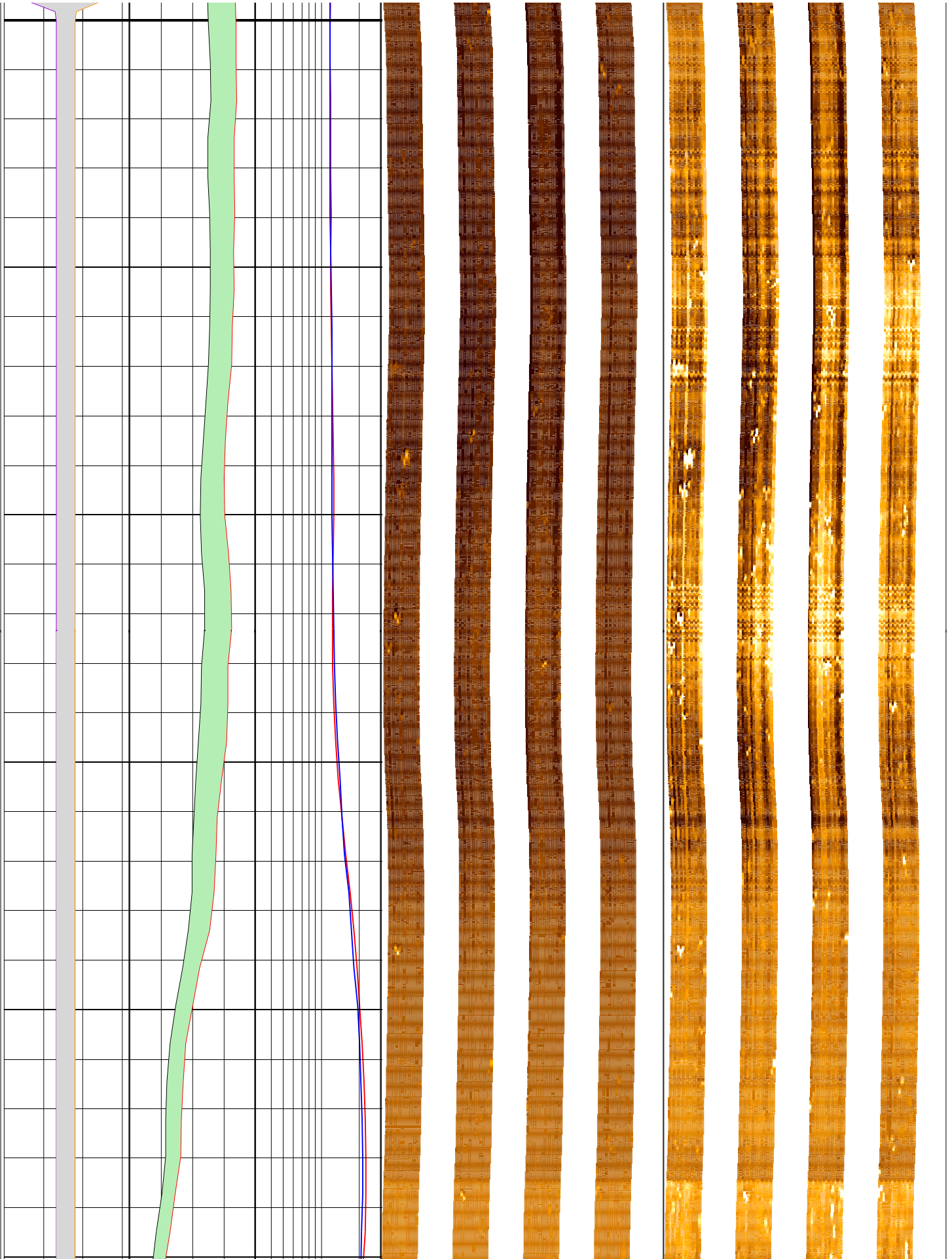
198

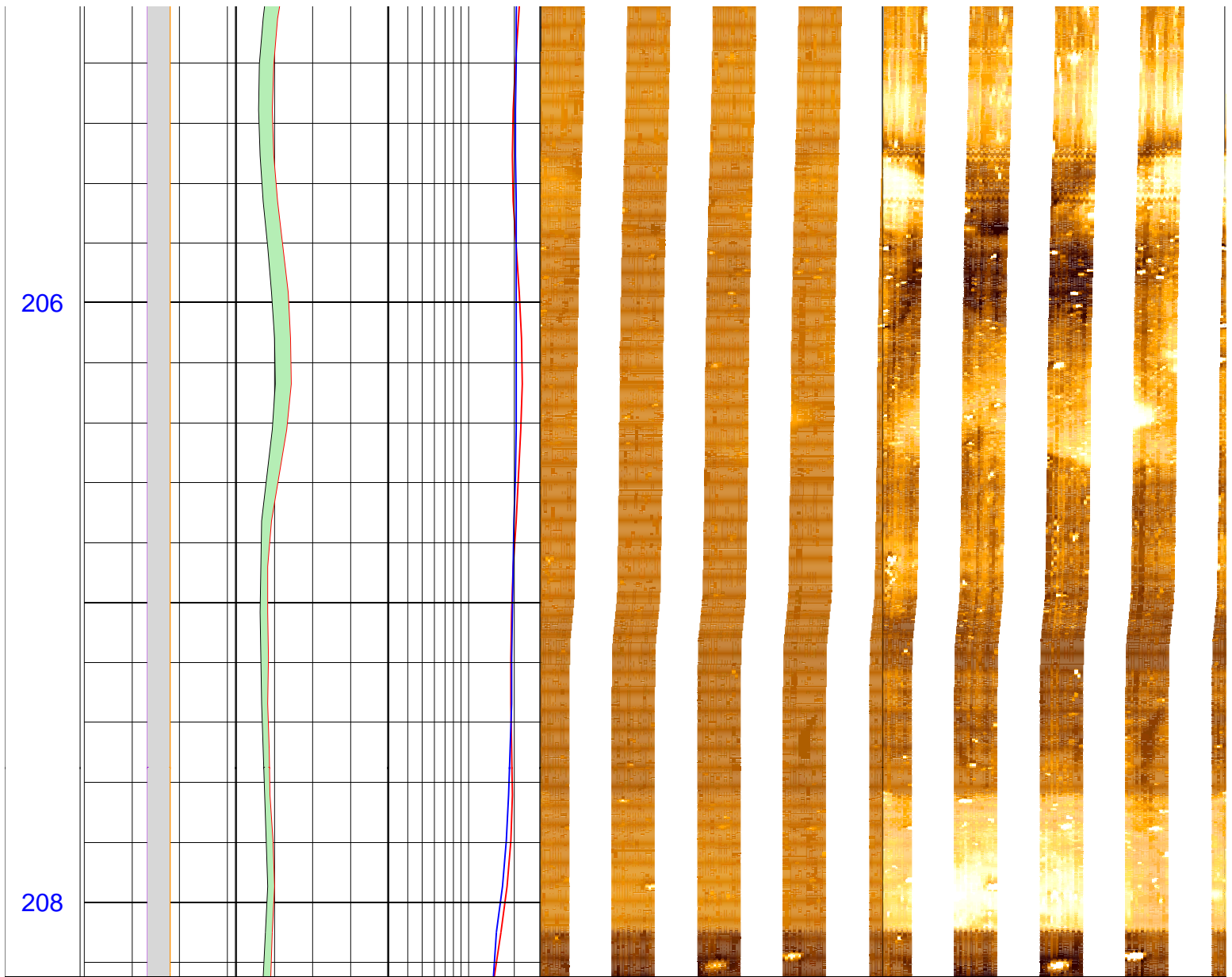


200

202

204





MD 1 : 20 m	lgp_Area_	lgp_Area_	IDPH_DIT 0.3 (ohm.m) 3	FMS_p2_static Horizontal Scale: 1 : 6.981 Orientation North		FMS_p2-dynamic Horizontal Scale: 1 : 6.981 Orientation North		
	C1_FMS_p2 20 (in) -20	HCGR_DIT 0 (gAPI) 100	IMPH_DIT 0.3 (ohm.m) 3	0 120 240 360	Resistive FMS4 Image Conductive			0 120 240 360
	C2_FMS_p2 -20 (in) 20	HSGR_DIT 0 (gAPI) 100		Resistive FMS4 Image Conductive		Resistive FMS4 Image Conductive		