

Schlumberger

GEOFRAME
PROCESSED
INTERPRETATION

Processed FMS Images Depth Reference: m WMSF

* A Mark of Schlumberger

Using the following logs: FMS/DIT/HNGS

COMPANY: Lamont Doherty Earth Observatory
WELL: Expedition 318 Hole U1361A
FIELD: Wilkes Land Margin
Rig: JOIDES Resolution
Country:
COUNTRY:
Date Logged: 1-Mar-2010 Date Processed:
Well Location: Latitude: S 64.4096 Deg
Longitude: E 143.0033 Deg
Elevations: KB: 11m DF: 11m GL: 3469.5m
API Number: Job Number:

FOLD HERE The well name, location and borehole reference data were furnished by the customer.

All interpretations are opinions based on inferences from electrical or other measurements and we cannot, and do not guarantee the accuracy or correctness of any interpretation, and we shall not, except in the case of gross or willful negligence on our part, be liable or responsible for any loss, costs, damages or expenses incurred or sustained by anyone resulting from any interpretations made by any of our officers, agents or employees. These interpretations are also subject to Clause 4 of our General Terms and Conditions as set out in our current Price Schedule.

Field Recording:	Location:	Software Version:	Engineer:
------------------	-----------	-------------------	-----------

Office Recording:	ICS Center:	Baseline:	Log Analyst:
-------------------	-------------	-----------	--------------

Mud and Borehole Measurements:

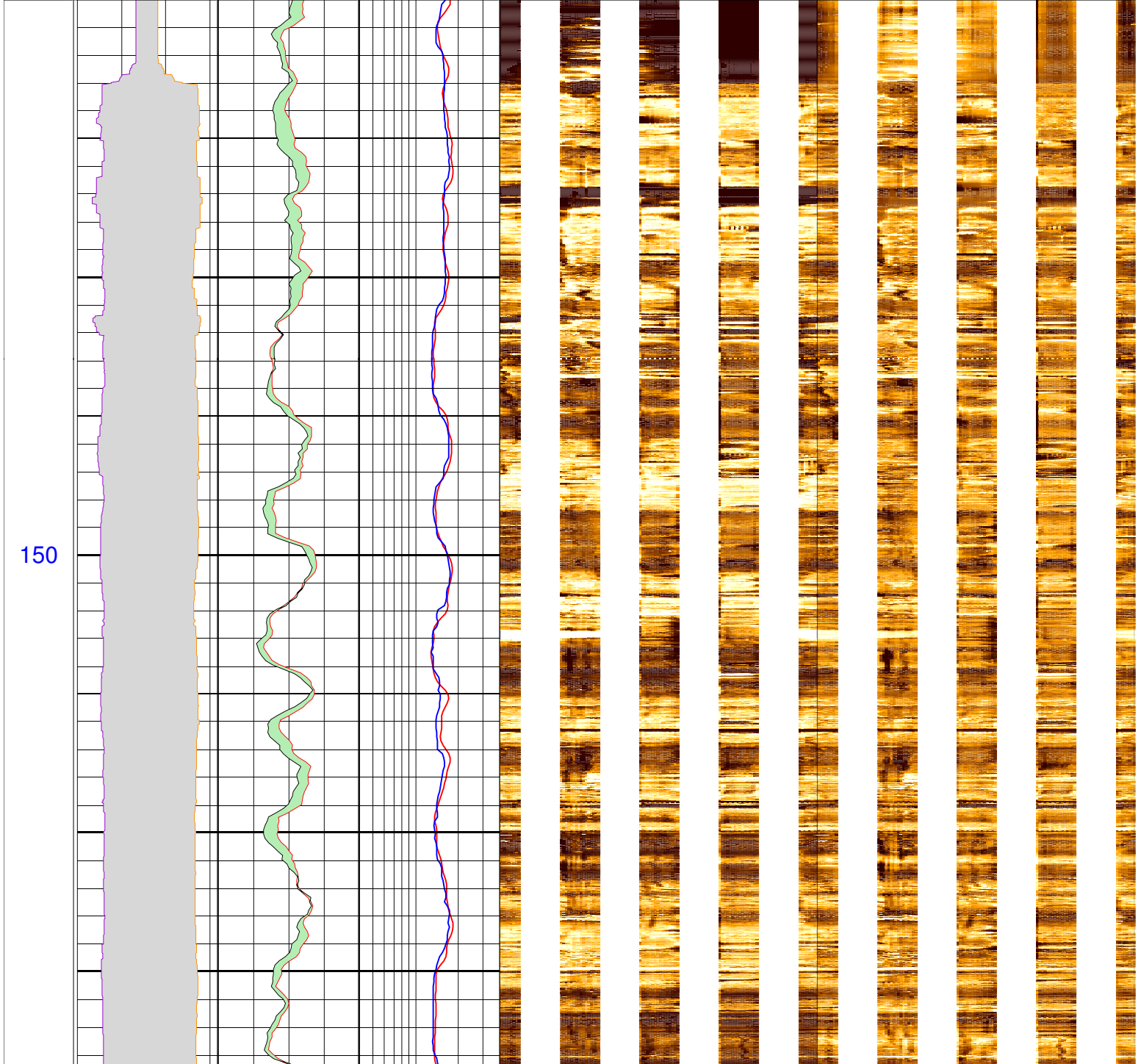
Rm @ Measured Temperature: @	BHT:	Bitsize: 11.4375in
Rmf @ Measured Temperature: @	Type Fluid in Hole:	Sepiolite Sea Water Gel
Rmc @ Measured Temperature: @	Mud Density: 1.22g/cm3	

Remarks:

Data depth-shifted and depth-matched. Depth reference: m WMSF.
Drill pipe at 101 m WMSF. Water depth: 3469.5 m WRF.

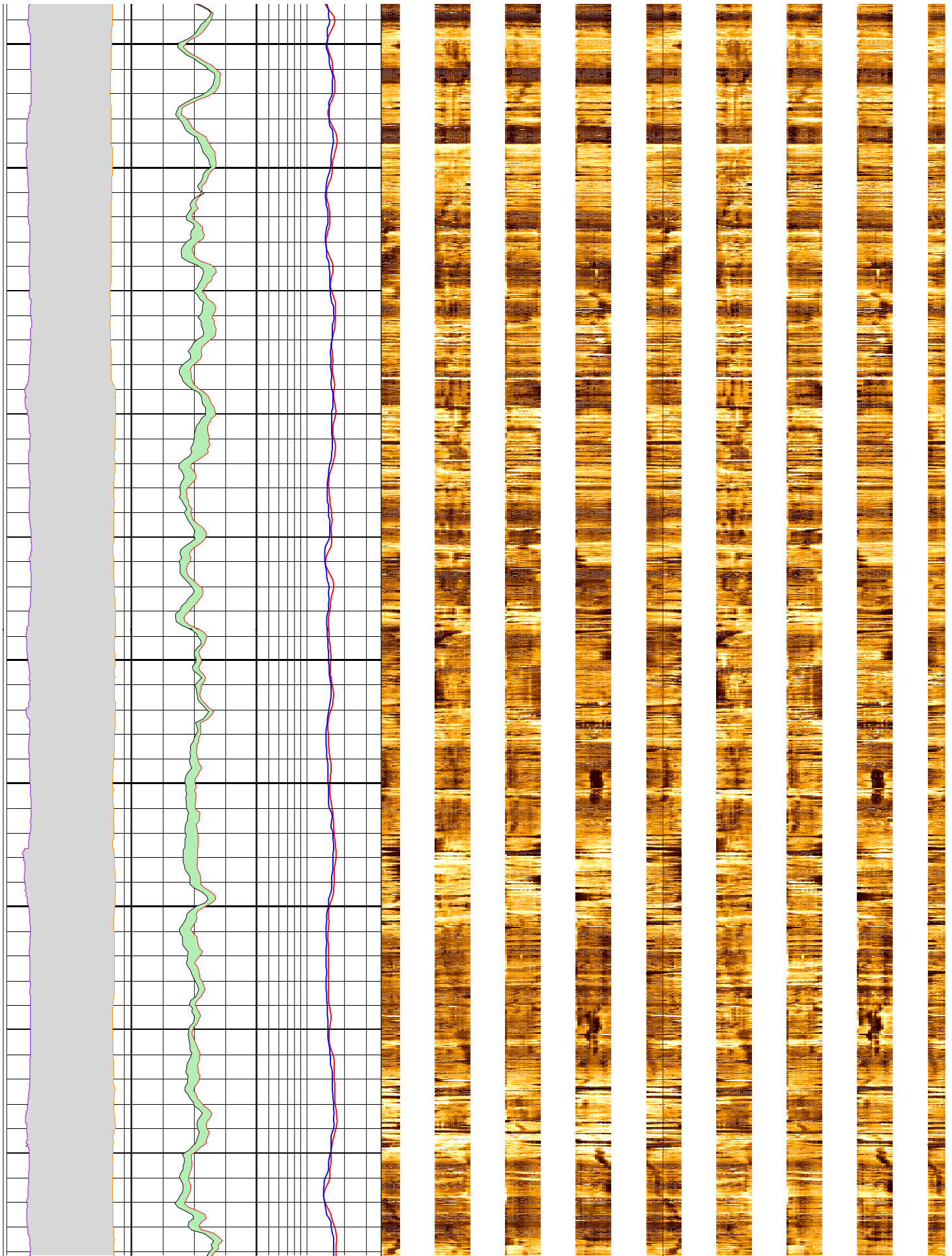
Average heave (peak to peak): 3 m. Wireline Heave Compensator used.

	C2_FMS_p2 -20 (in) 20	HSGR_DIT 0 (gAPI) 100		FMS_pass2_static Horizontal Scale: 1 : 6.981 Straight Image			FMS_pass2_dynamic Horizontal Scale: 1 : 6.981 Straight Image				
	C1_FMS_p2 20 (in) -20	HCGR_DIT 0 (gAPI) 100	IMPH_DIT 0.2 (ohm.m) 2	0	120	240	360	0	120	240	360
MD 1 : 200 m	lgp_Area_	lgp_Area_	IDPH_DIT 0.2 (ohm.m) 2	Resistive FMS4 Image Conductive			Resistive FMS4 Image Conductive				



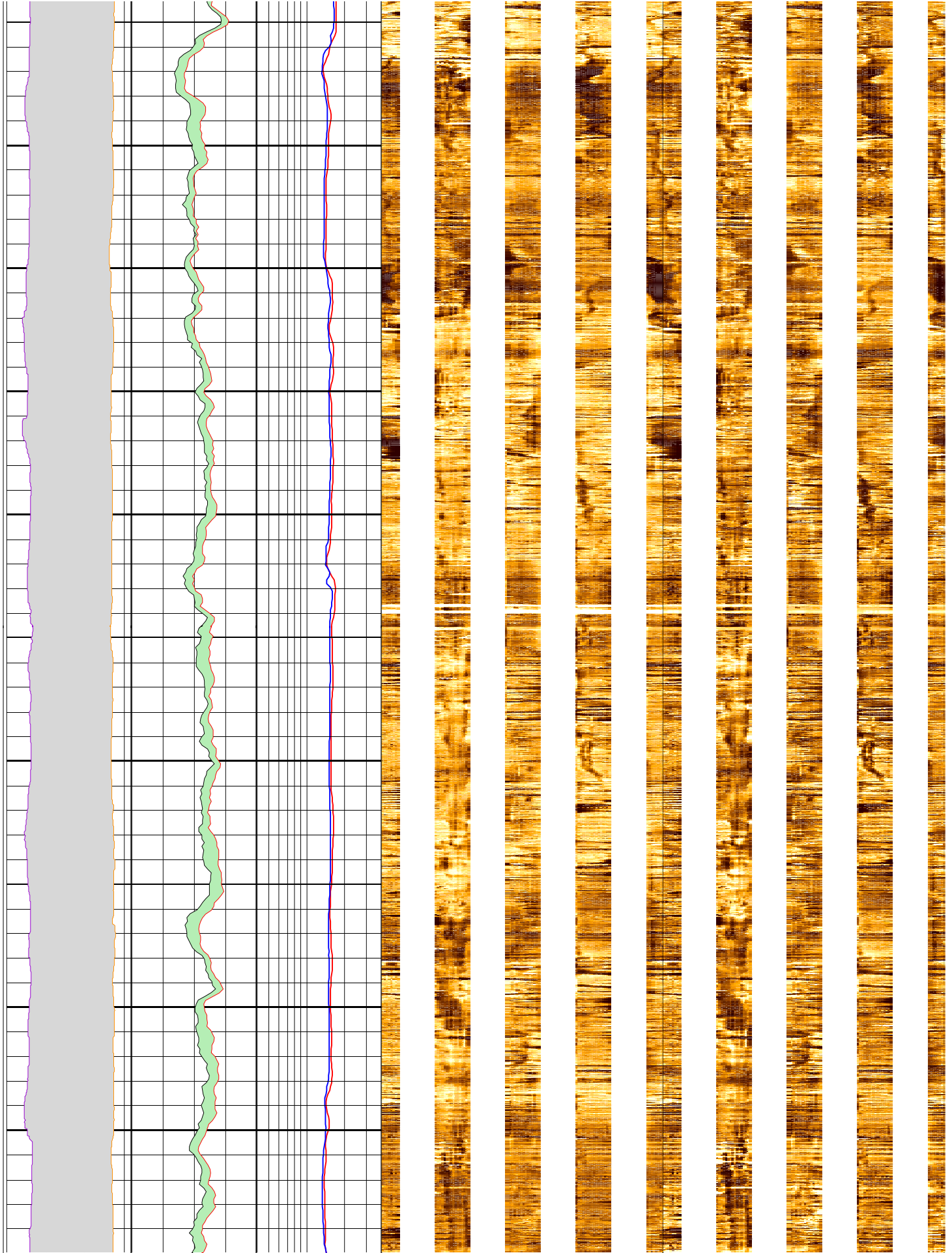
175

200



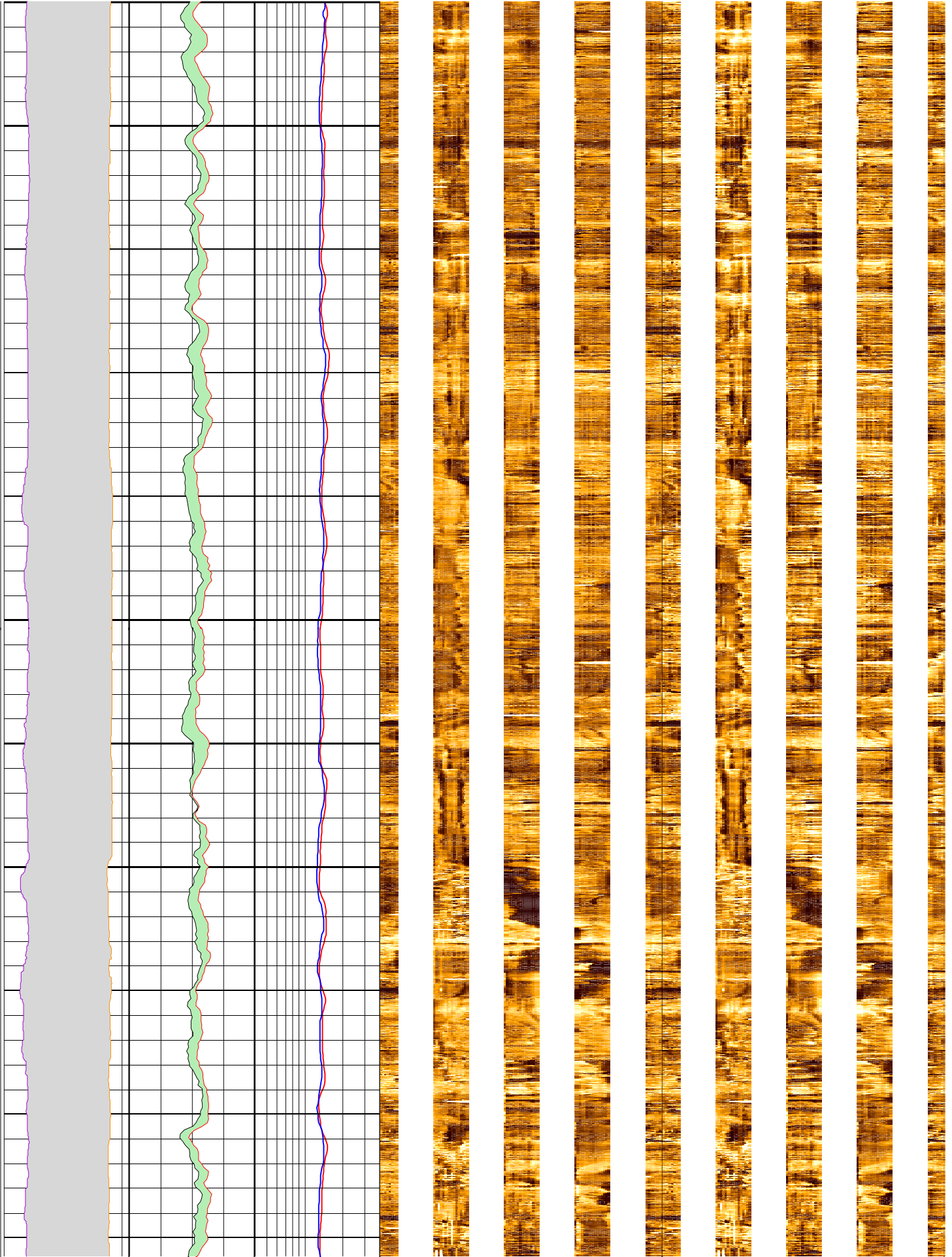
225

250



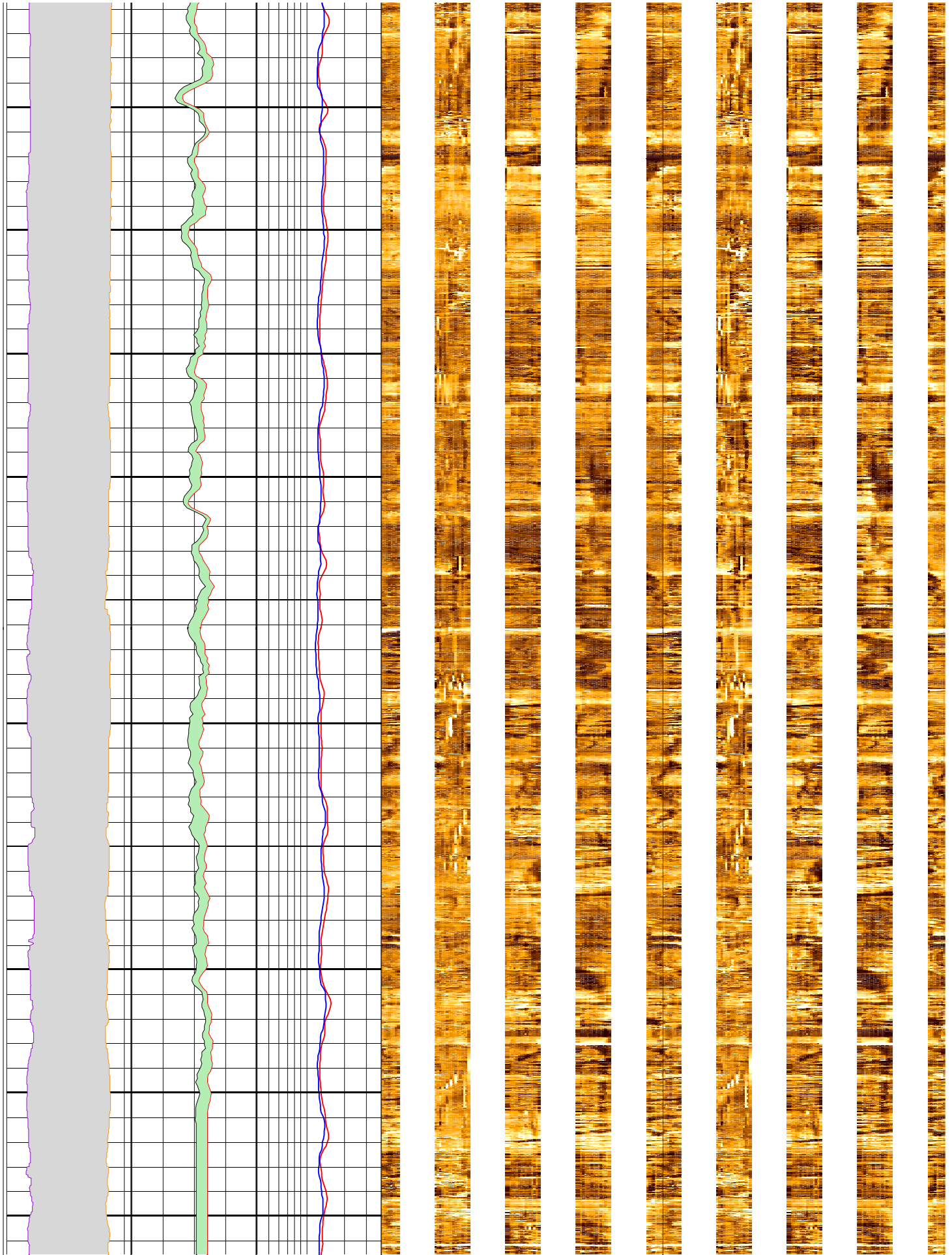
275

300

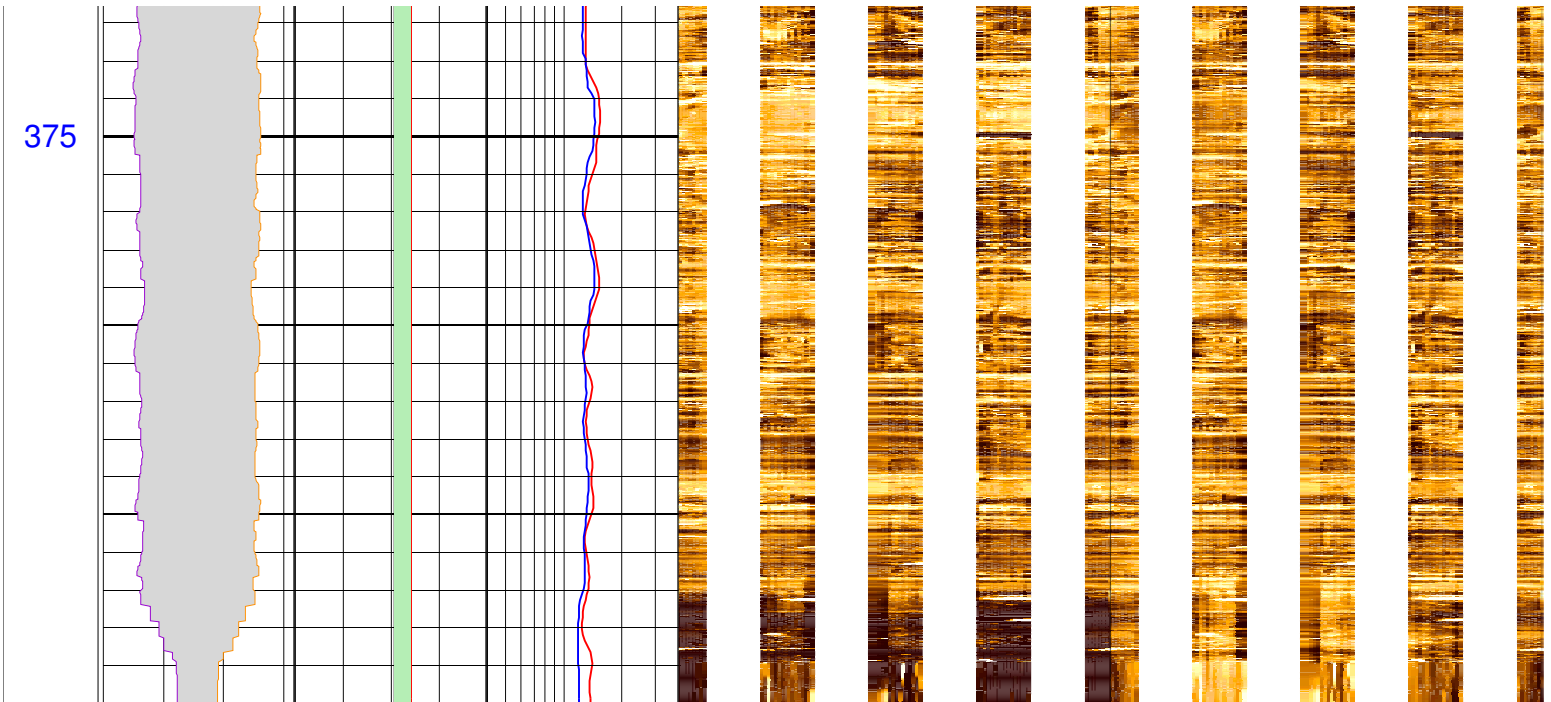


325

350



375



MD 1 : 200 m	lgp_Area_	lgp_Area_	IDPH_DIT 0.2 (ohm.m) 2	FMS_pass2_static Horizontal Scale: 1 : 6.981 Straight Image		FMS_pass2_dynamic Horizontal Scale: 1 : 6.981 Straight Image	
	C1_FMS_p2 20 (in) -20	HCGR_DIT 0 (gAPI)100	IMPH_DIT 0.2 (ohm.m) 2	0 120 240 360	0 120 240 360	Resistive FMS4 Image Conductive	
	C2_FMS_p2 -20 (in) 20	HSGR_DIT 0 (gAPI)100		Resistive FMS4 Image Conductive		Resistive FMS4 Image Conductive	