

Schlumberger

GEOFRAME
PROCESSED
INTERPRETATION

Processed UBI Images Depth Reference: m WMSF

* A Mark of Schlumberger

Using the following logs: UBI Images
HNCS/HCGS/LCAL

COMPANY: Lamont Doherty Earth Observatory
WELL: Expedition 327 Hole U1362A
FIELD: Juan de Fuca Ridge Flank

Pacific Ocean

COUNTRY:
Date Logged: 12-Aug-2010 Date Processed:
Well Location: Latitude: N 47° 45.6628'; Longitude: W 127° 45.752'

Elevations: KB: 2672m DF: 2672m GL: -2673.5m

API Number: Job Number:

FOLD HERE The well name, location and borehole reference data were furnished by the customer.

All interpretations are opinions based on inferences from electrical or other measurements and we cannot, and do not guarantee the accuracy or correctness of any interpretation, and we shall not, except in the case of gross or willful negligence on our part, be liable or responsible for any loss, costs, damages or expenses incurred or sustained by anyone resulting from any interpretations made by any of our officers, agents or employees. These interpretations are also subject to Clause 4 of our General Terms and Conditions as set out in our current Price Schedule.

Field Recording: Location: Houston Software Version: 17C0-154 Engineer: C. Furman

Office Recording: ICS Center: Baseline: 4.5 Log Analyst:

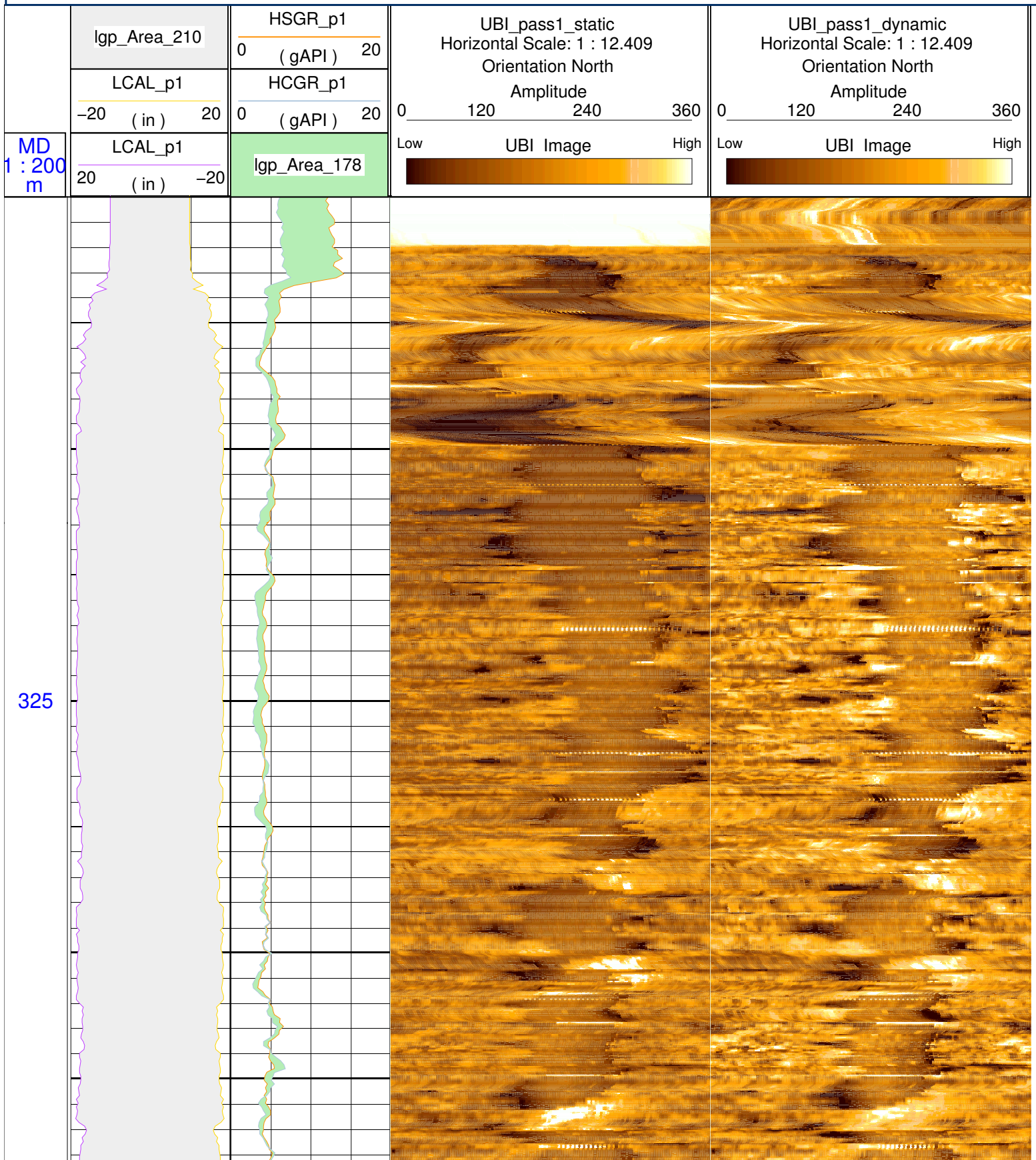
Mud and Borehole Measurements:

Rm @ Measured Temperature: @	BHT: 15.5556degC	Bitsize: 9.875in
Rmf @ Measured Temperature: @	Type Fluid in Hole:	Seawater
Rmc @ Measured Temperature: @	Mud Density: 1.03g/cm3	

Remarks:

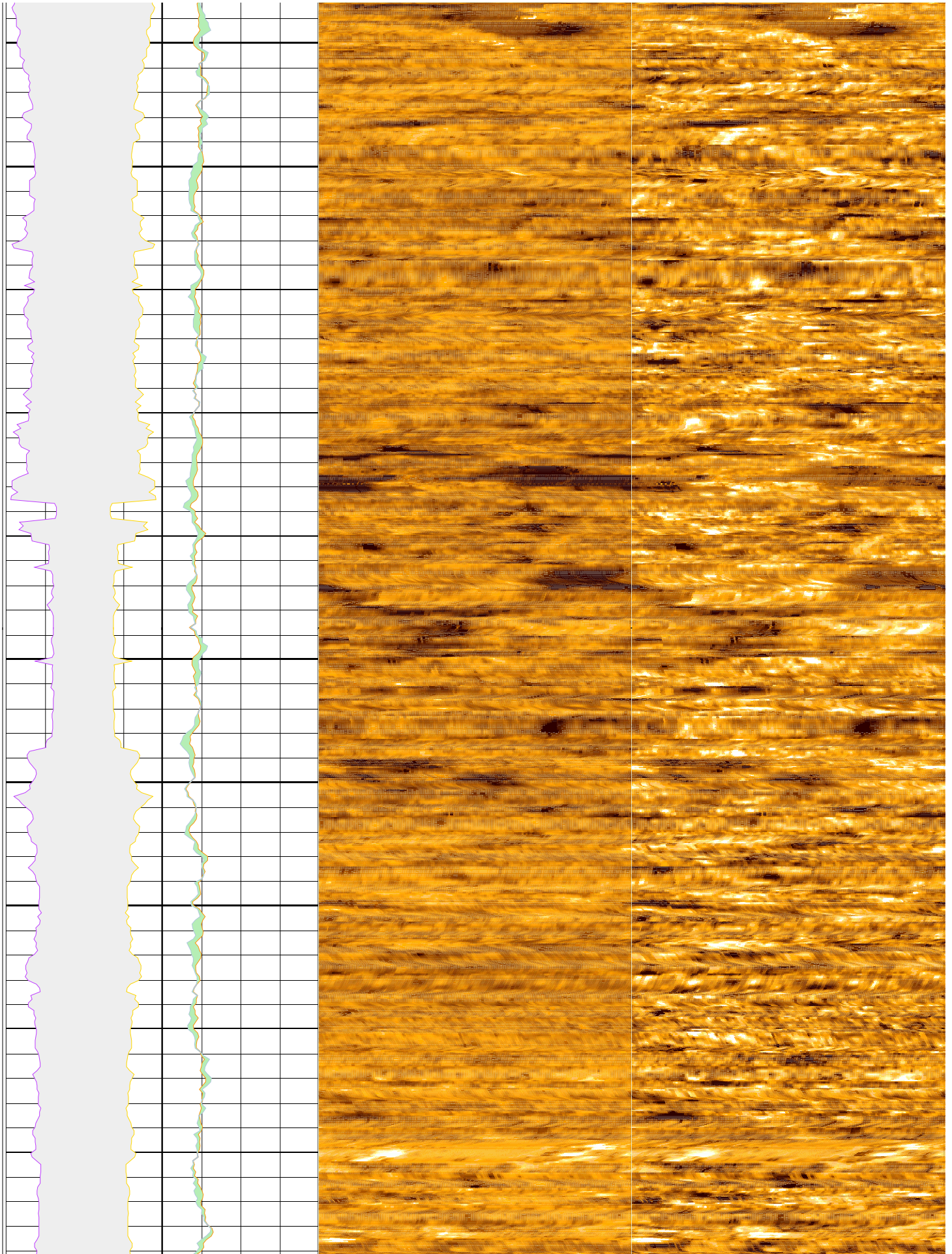
Logs run in first hole ("A" hole) of drilling site U1362 for the primary purpose of evaluating borehole condition in preparation to set a drilling packer for a formation injectivity test.

UBI tool centralized using integrated bowspring arms and run with USRS-A due to pipe ID restrictions.
 Fluid Properties Mode (FPM) recorded on the downlog; FVEL= xxxx and ZMUD=xxxx
 Main log recorded in 250 kHz x 140 samples/rev x 1 inch vertical sampling.



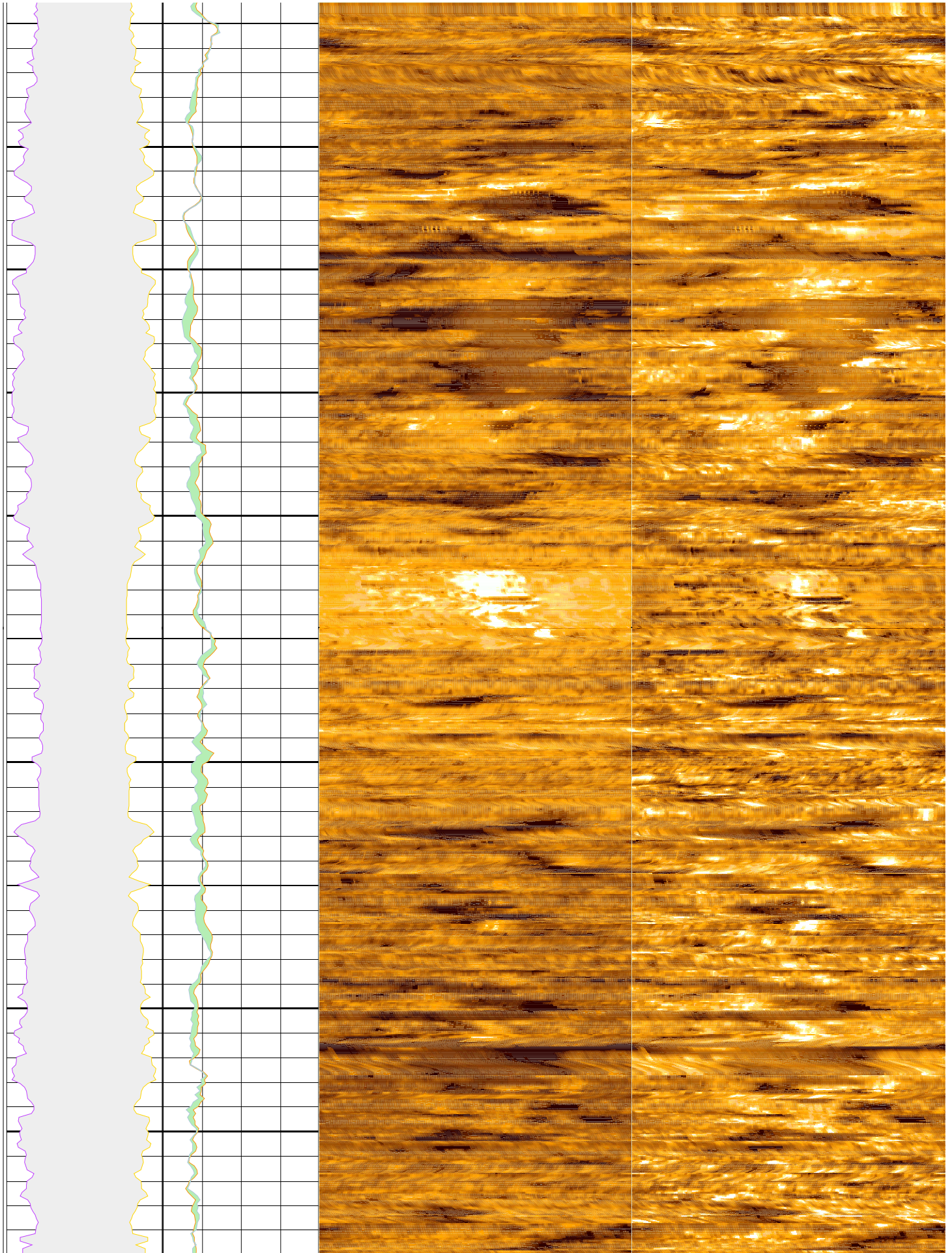
350

375



400

425



450

475

