

Schlumberger

GEOFRAME
PROCESSED
INTERPRETATION

Processed FMS Images Depth Reference: m WMSF

* A Mark of Schlumberger

Using the following logs: FMS/HNGS/GPIT

COMPANY: Lamont Doherty Earth Observatory
WELL: Expedition 329 Site U1368F
FIELD: South Pacific Gyre
Rig: JOIDES Resolution
Ocean: Pacific
COUNTRY: USA
Date Logged: 17-Nov-2010 Date Processed:
Well Location: Latitude: S 27.9167*
Longitude: W 123 * 9.6433'
Elevations: KB: 11m DF: 11m GL: -3751.9m
API Number: Job Number:

FOLD HERE The well name, location and borehole reference data were furnished by the customer.

All interpretations are opinions based on inferences from electrical or other measurements and we cannot, and do not guarantee the accuracy or correctness of any interpretation, and we shall not, except in the case of gross or willful negligence on our part, be liable or responsible for any loss, costs, damages or expenses incurred or sustained by anyone resulting from any interpretations made by any of our officers, agents or employees. These interpretations are also subject to Clause 4 of our General Terms and Conditions as set out in our current Price Schedule.

Field Recording: Location: Houston Software Version: 17C0-154 Engineer: C. Furman

Office Recording: ICS Center: Baseline: Log Analyst:

Mud and Borehole Measurements:

Rm @ Measured Temperature: @	BHT: 100degC	Bitsize: 11.438in
Rmf @ Measured Temperature: @	Type Fluid in Hole:	Seawater
Rmc @ Measured Temperature: @	Mud Density: 1.03g/cm3	

Remarks:

Data depth-shifted and depth-matched. Depth reference: m WMSF. Drill pipe at 34 m WMSF. Water depth at 3751.9 m WMSF. Average peak-to-peak heave: 0.4-2 m. Wireline heave compensator used during the logging operation.

MD
1 : 200
m

<u>C2_p1</u> -16 (in) 16	<u>HSGR_p1</u> 0 (gAPI) 20		
<u>C1_p1</u> 16 (in) -16	<u>HCGR_p1</u> 0 (gAPI) 20	<u>IMPH_p2</u> 0.3 (ohm.m) 300	
lgp_Area_	lgp_Area_	<u>IDPH_p2</u> 0.3 (ohm.m) 300	

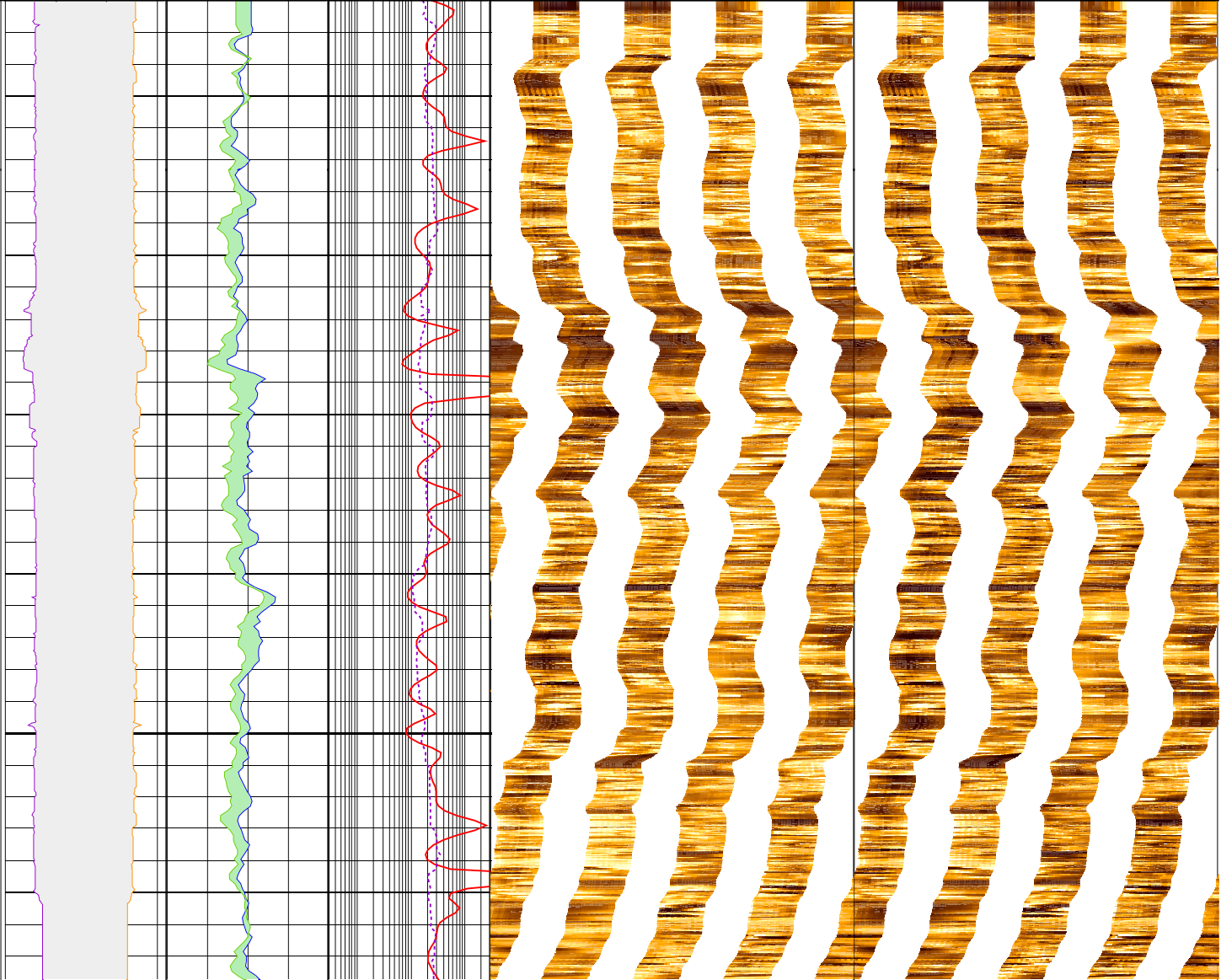
FMS_p1_static
Horizontal Scale: 1 : 6.981
Orientation North

FMS_p1_dynamic
Horizontal Scale: 1 : 6.981
Orientation North

Resistive FMS4 Image Conductive

Resistive FMS4 Image Conductive

75



100

MD
1 : 200
m

lgp_Area_	lgp_Area_	IDPH_p2 0.3 (ohm.m) 300
C1_p1 16 (in) -16	HCGR_p1 0 (gAPI) 20	IMPH_p2 0.3 (ohm.m) 300
C2_p1 -16 (in) 16	HSGR_p1 0 (gAPI) 20	

FMS_p1_static
Horizontal Scale: 1 : 6.981
Orientation North

0 120 240 360

Resistive FMS4 Image Conductive

FMS_p1_dynamic
Horizontal Scale: 1 : 6.981
Orientation North

0 120 240 360

Resistive FMS4 Image Conductive

