

# Processed FMS Images Depth Reference: m WMSF

\* A Mark of Schlumberger

Using the following logs: FMS/HNGS/GPIT

**COMPANY:** Lamont Doherty Earth Observatory  
**WELL:** Expedition 329 Site U1368F  
**FIELD:** South Pacific Gyre  
**Rig:** JOIDES Resolution  
**Ocean:** Pacific  
**COUNTRY:** USA  
**Date Logged:** 17-Nov-2010 **Date Processed:**  
**Well Location:** Latitude: S 27.9167\*  
 Longitude: W 123 \* 9.6433'  
**Elevations:** KB: 11m DF: 11m GL: -3751.9m  
**API Number:** Job Number:

FOLD HERE The well name, location and borehole reference data were furnished by the customer.

All interpretations are opinions based on inferences from electrical or other measurements and we cannot, and do not guarantee the accuracy or correctness of any interpretation, and we shall not, except in the case of gross or willful negligence on our part, be liable or responsible for any loss, costs, damages or expenses incurred or sustained by anyone resulting from any interpretations made by any of our officers, agents or employees. These interpretations are also subject to Clause 4 of our General Terms and Conditions as set out in our current Price Schedule.

Field Recording:	Location: Houston	Software Version: 17C0-154	Engineer: C. Furman
------------------	-------------------	----------------------------	---------------------

Office Recording:	ICS Center:	Baseline:	Log Analyst:
-------------------	-------------	-----------	--------------

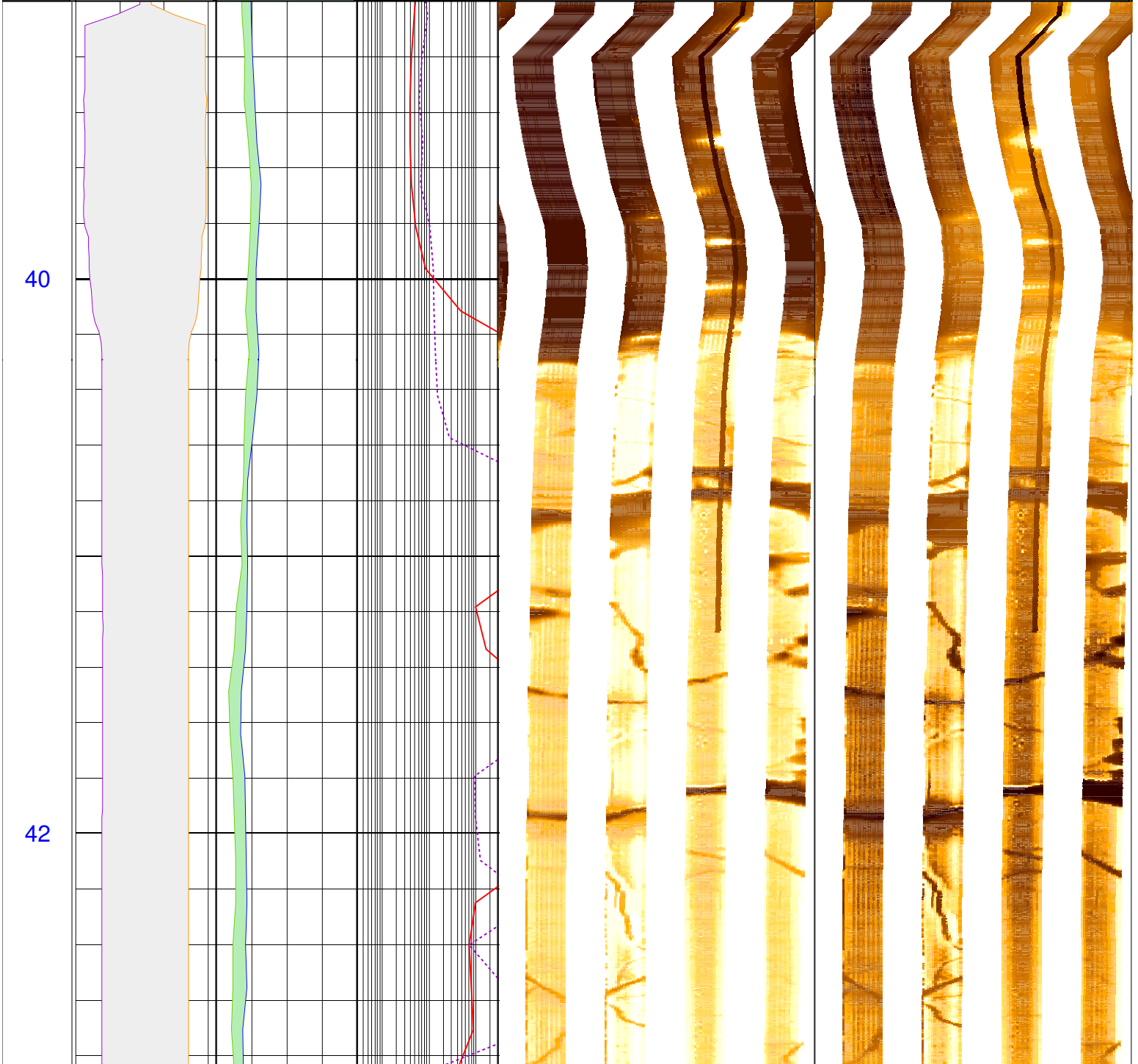
**Mud and Borehole Measurements:**

Rm @ Measured Temperature:	@	BHT: 100degC	Bitsize: 11.438in
Rmf @ Measured Temperature:	@	Type Fluid in Hole:	Seawater
Rmc @ Measured Temperature:	@	Mud Density: 1.03g/cm3	

**Remarks:**

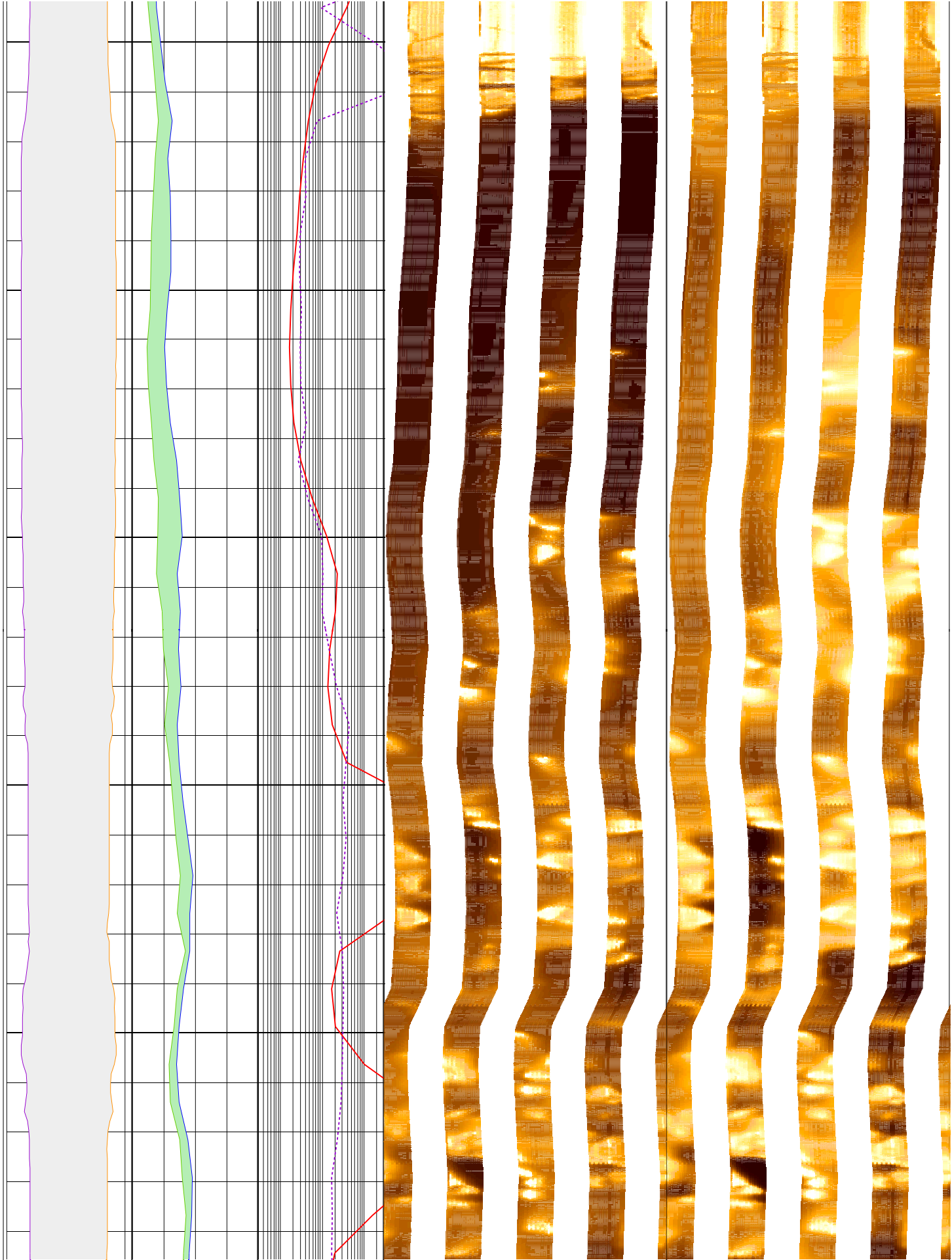
Data depth-shifted and depth-matched. Depth reference: m WMSF. Drill pipe at 34 m WMSF. Water depth at 3751.9 m WRF. Average peak-to-peak heave: 0.4-2 m. Wireline heave compensator used during the logging operation.

	C2_p2 -16 (in) 16	HSGR_p2 0 (gAPI) 20		FMS_p2_static Horizontal Scale: 1 : 6.981 Orientation North	FMS_p2-dynamic Horizontal Scale: 1 : 6.981 Orientation North
	C1_p2 16 (in) -16	HCGR_p2 0 (gAPI) 20	IMPH_p2 0.3 (ohm.m) 300	0 120 240 360	0 120 240 360
MD 1 : 20 m	lgp_Area_	lgp_Area_	IDPH_p2 0.3 (ohm.m) 300	Resistive FMS4 Image Conductive	Resistive FMS4 Image Conductive



44

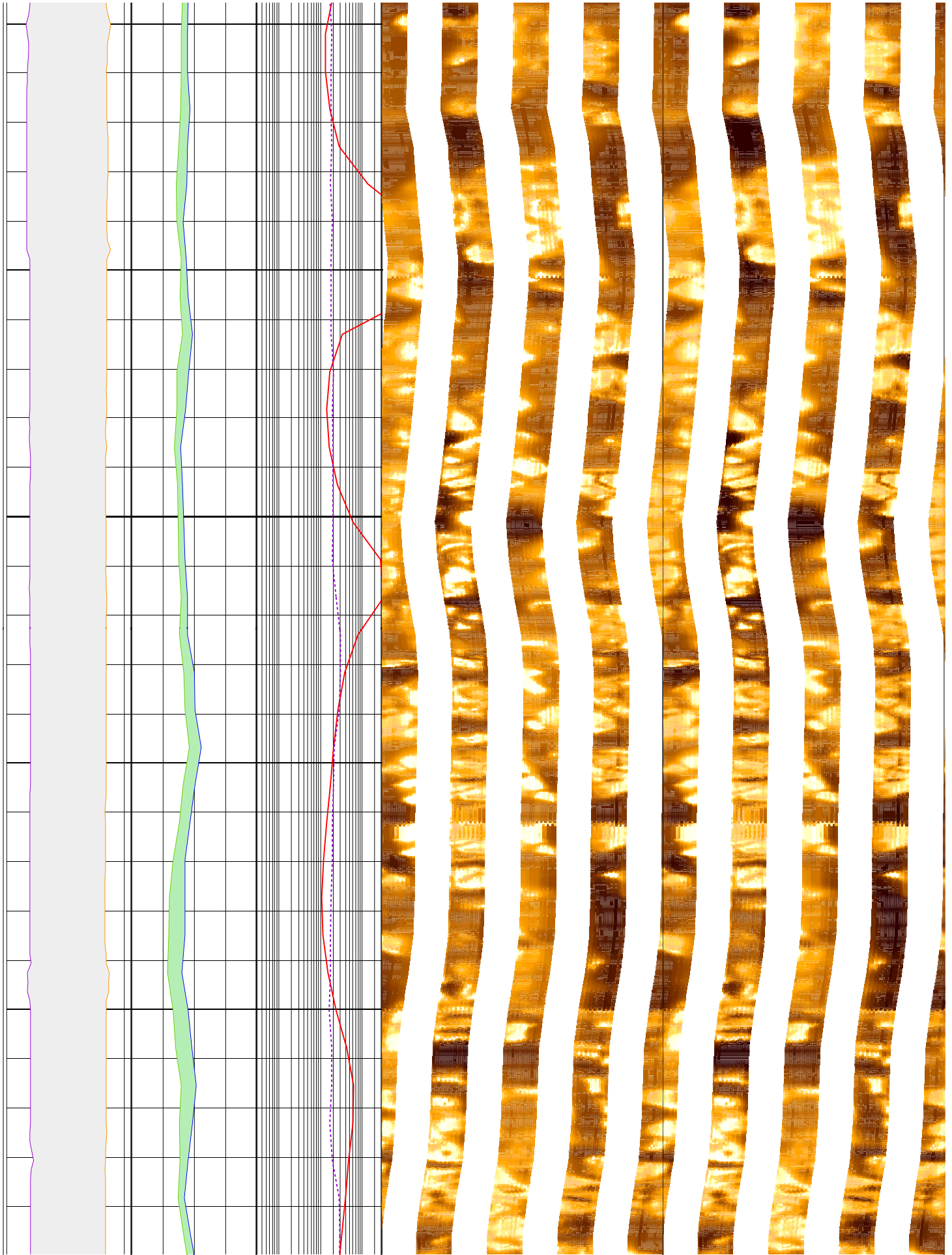
46



48

50

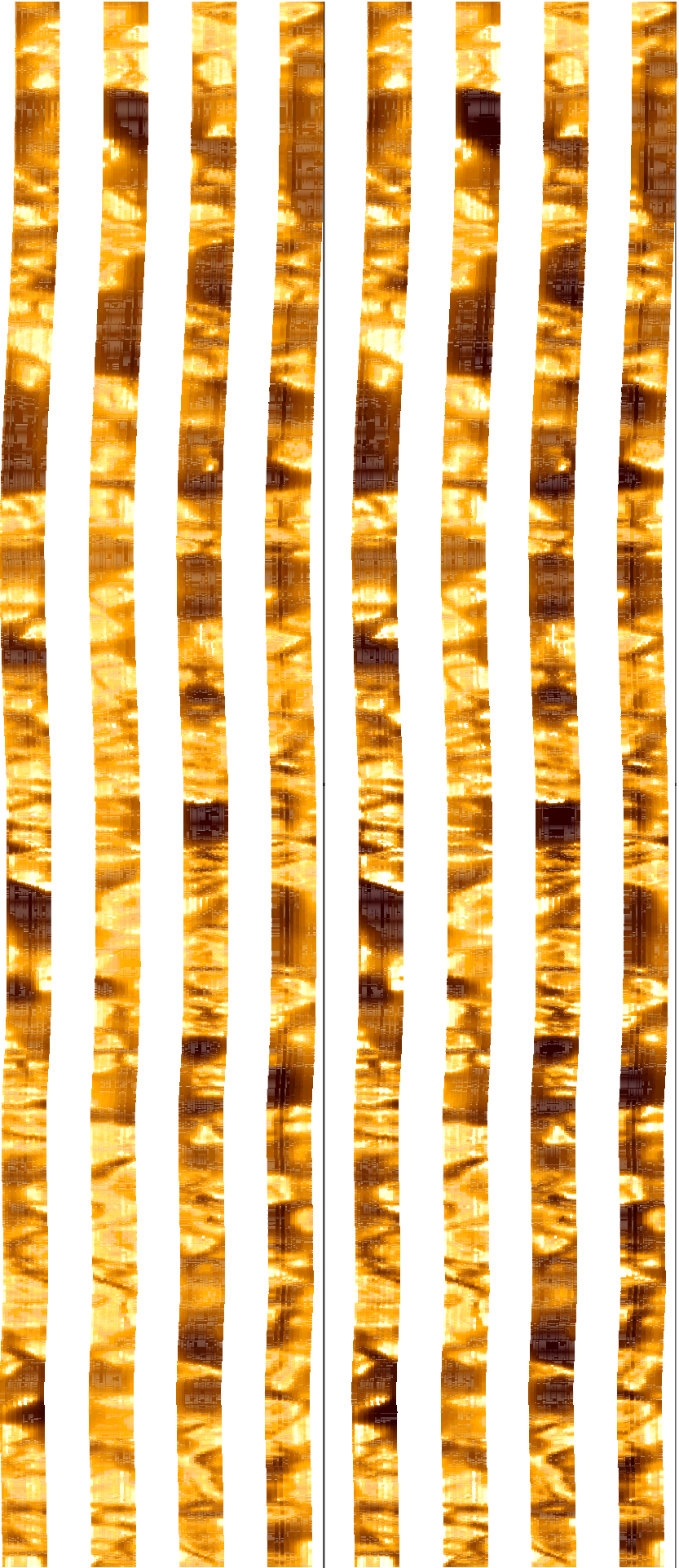
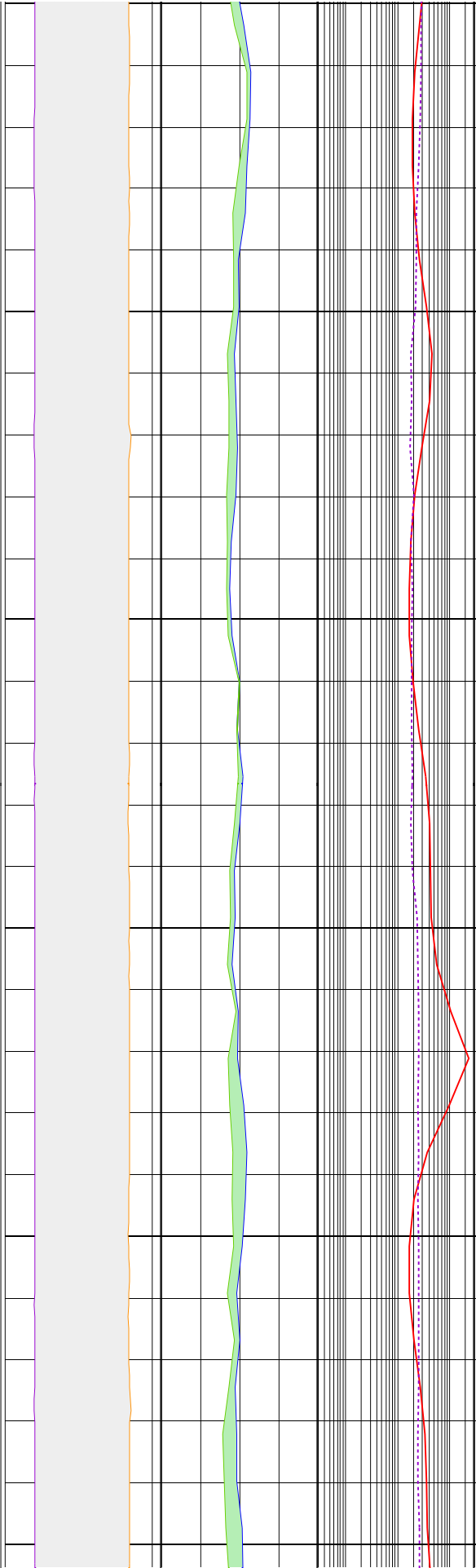
52



54

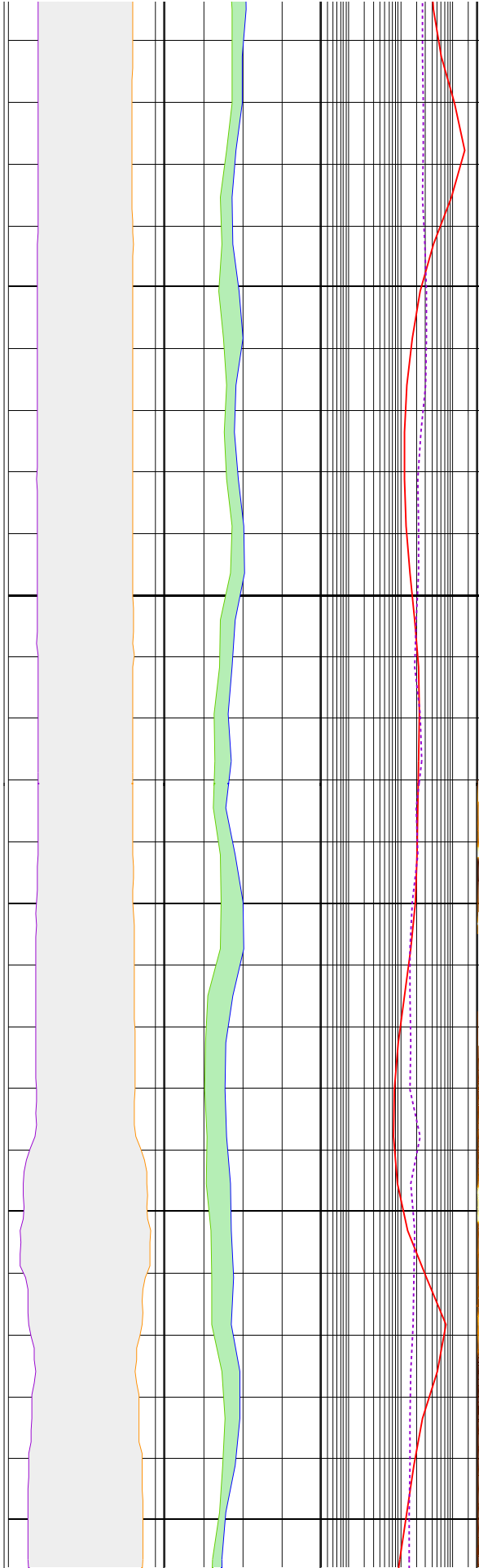
56

58



60

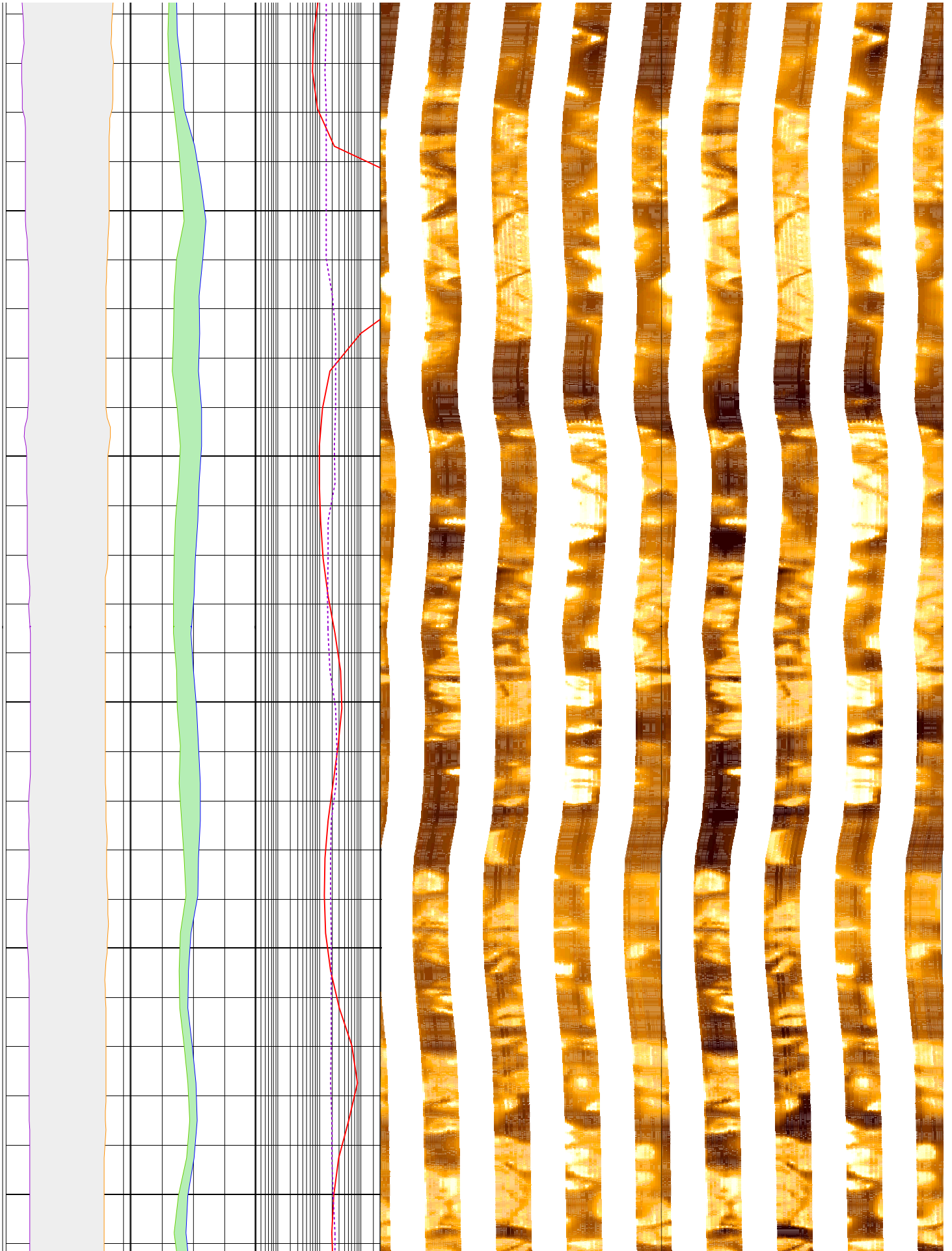
62



64

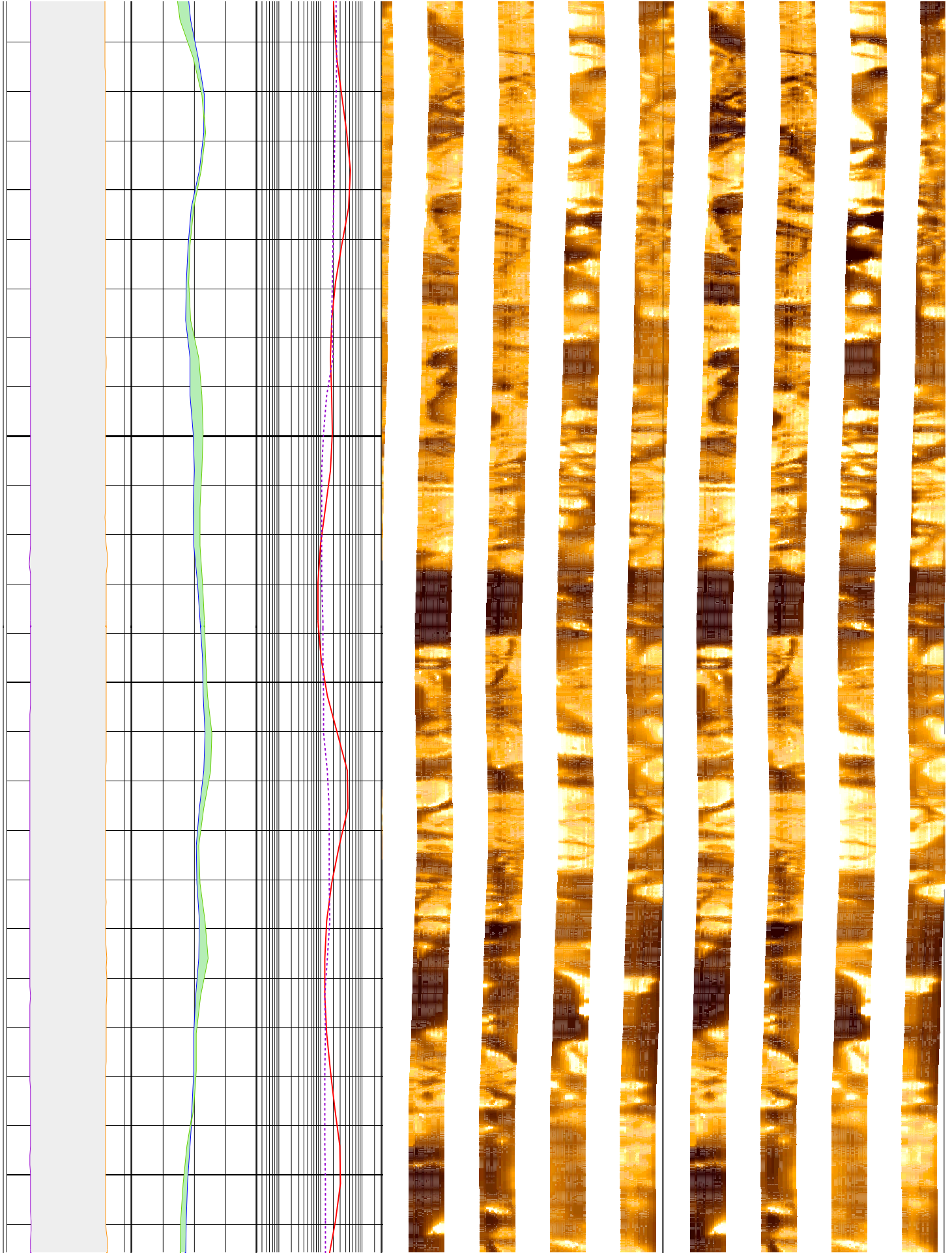
66

68



70

72

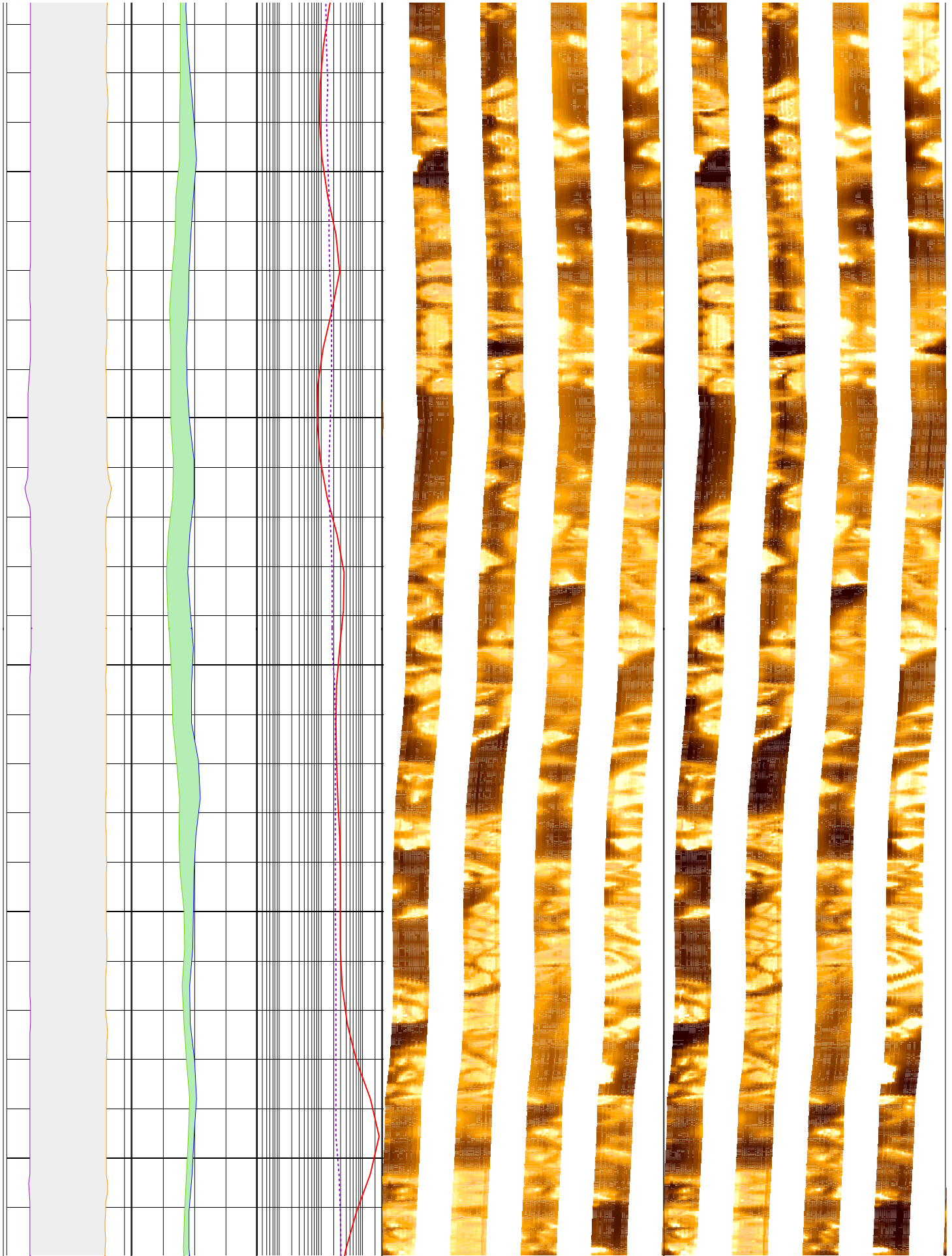




74

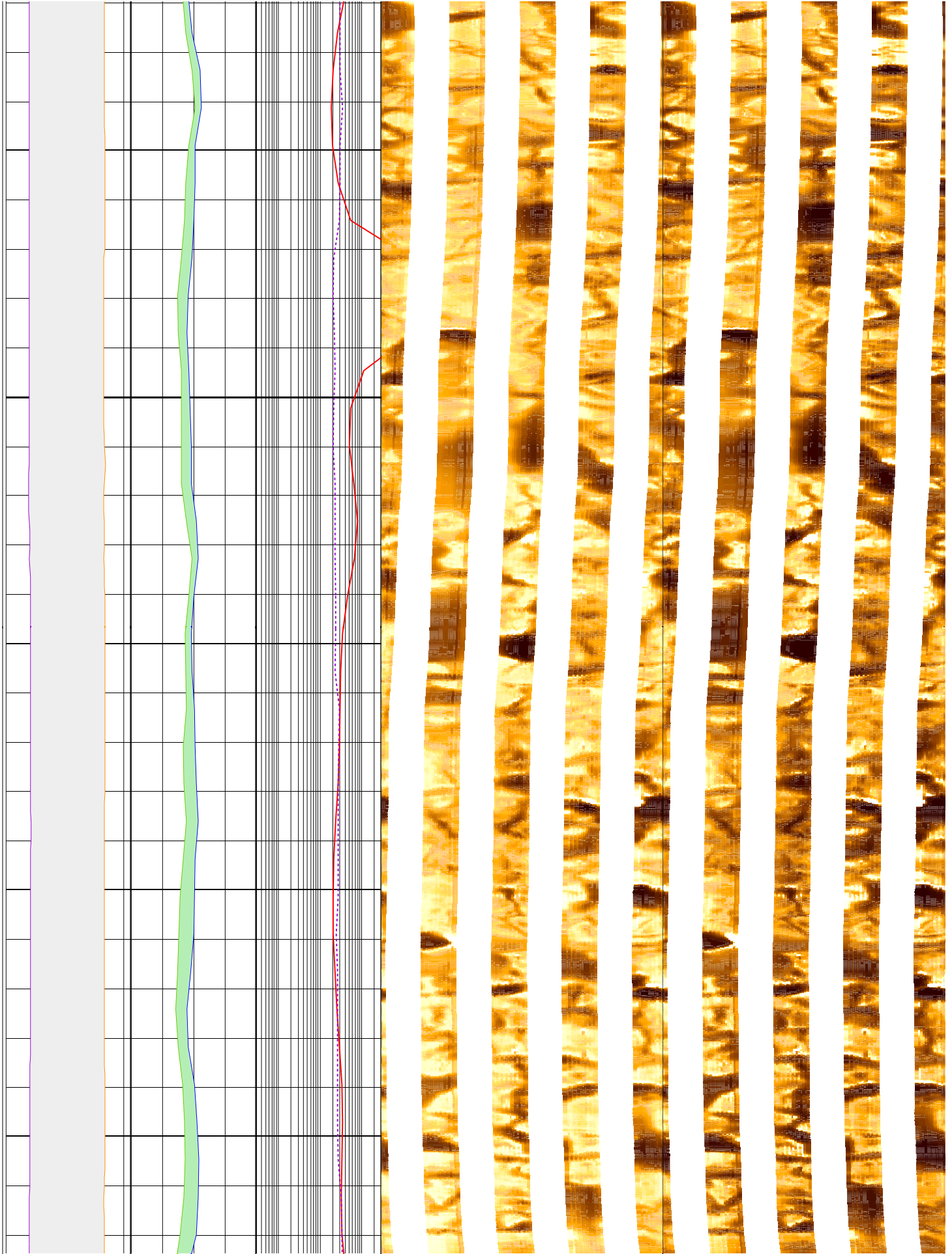
76

78



80

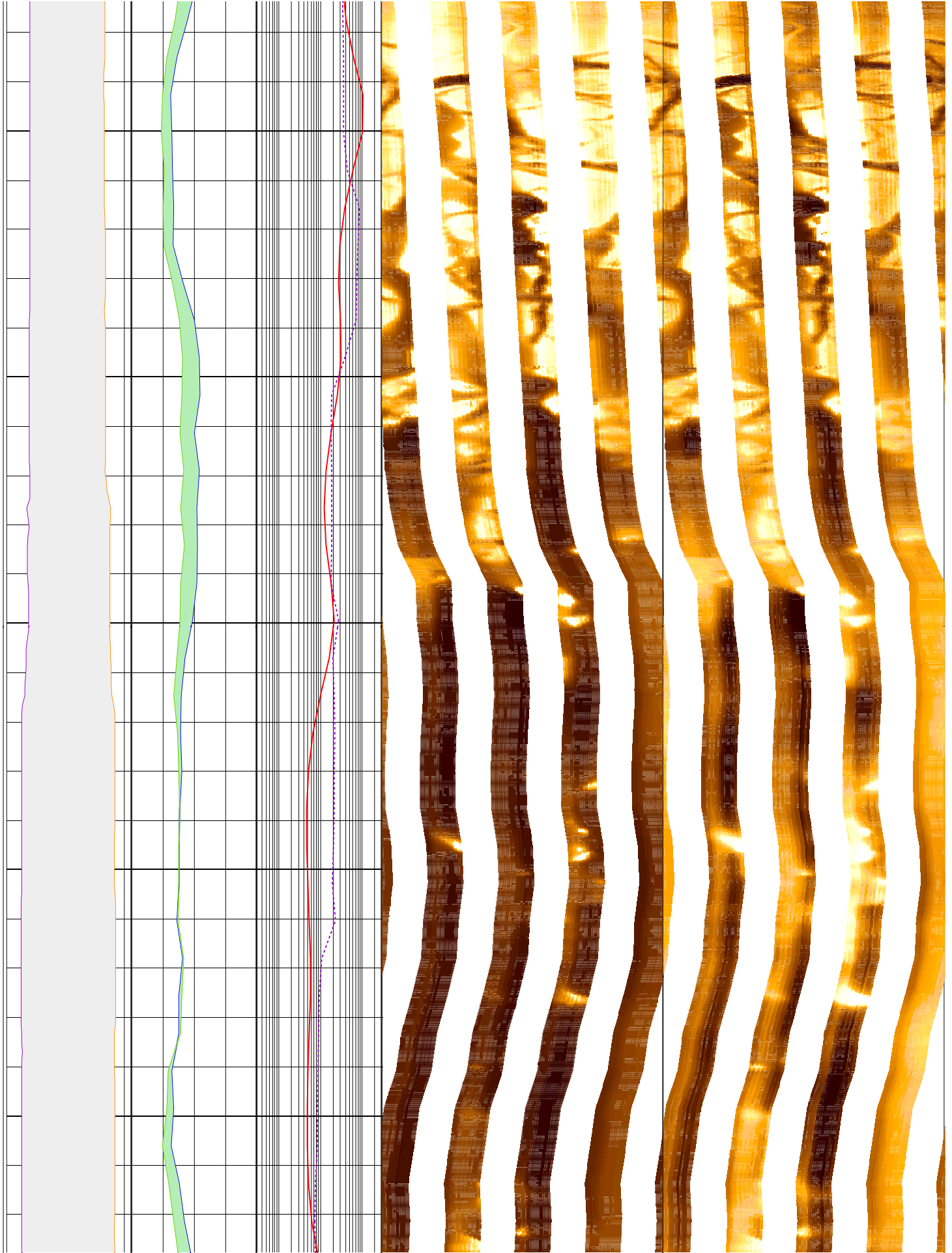
82



84

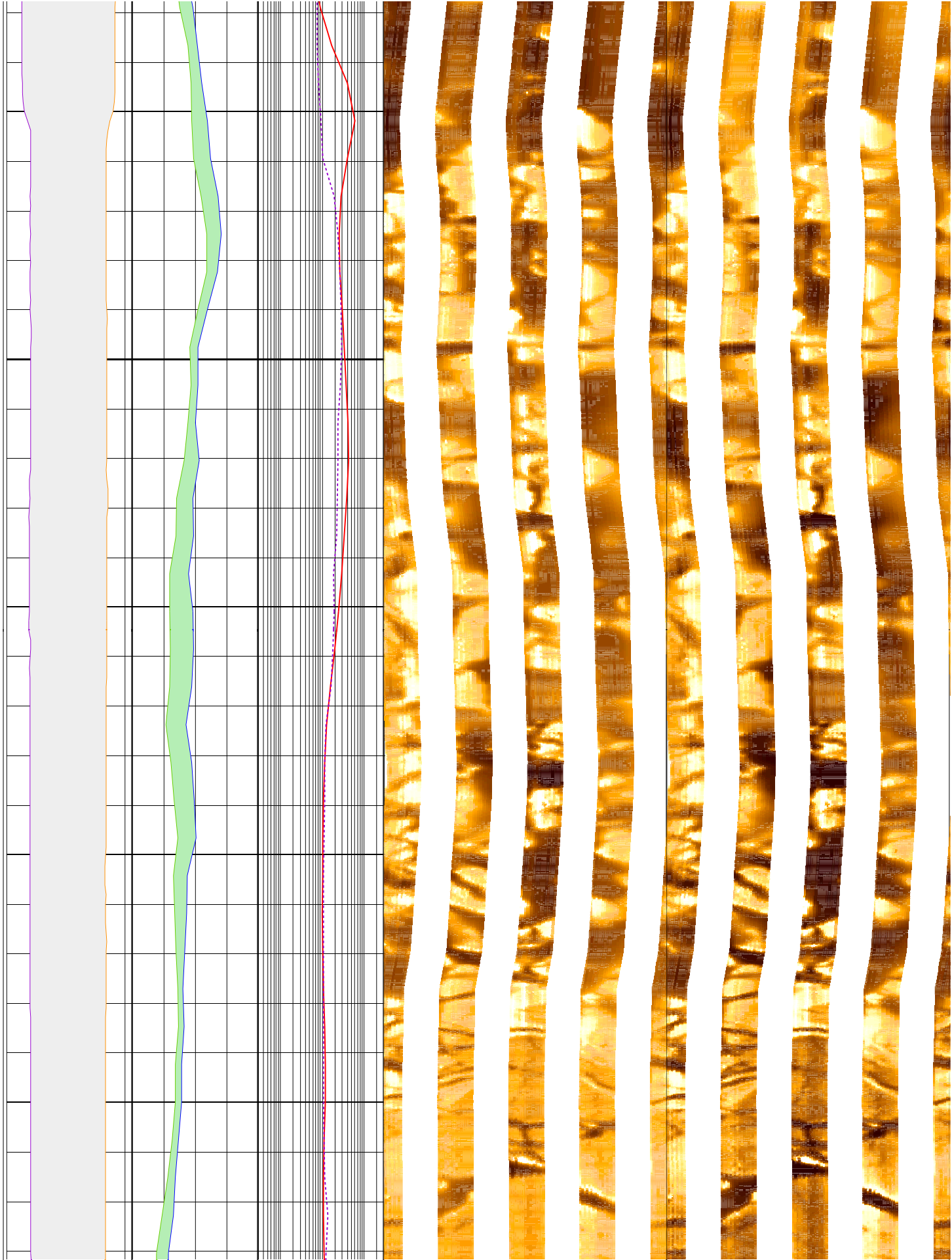
86

88



90

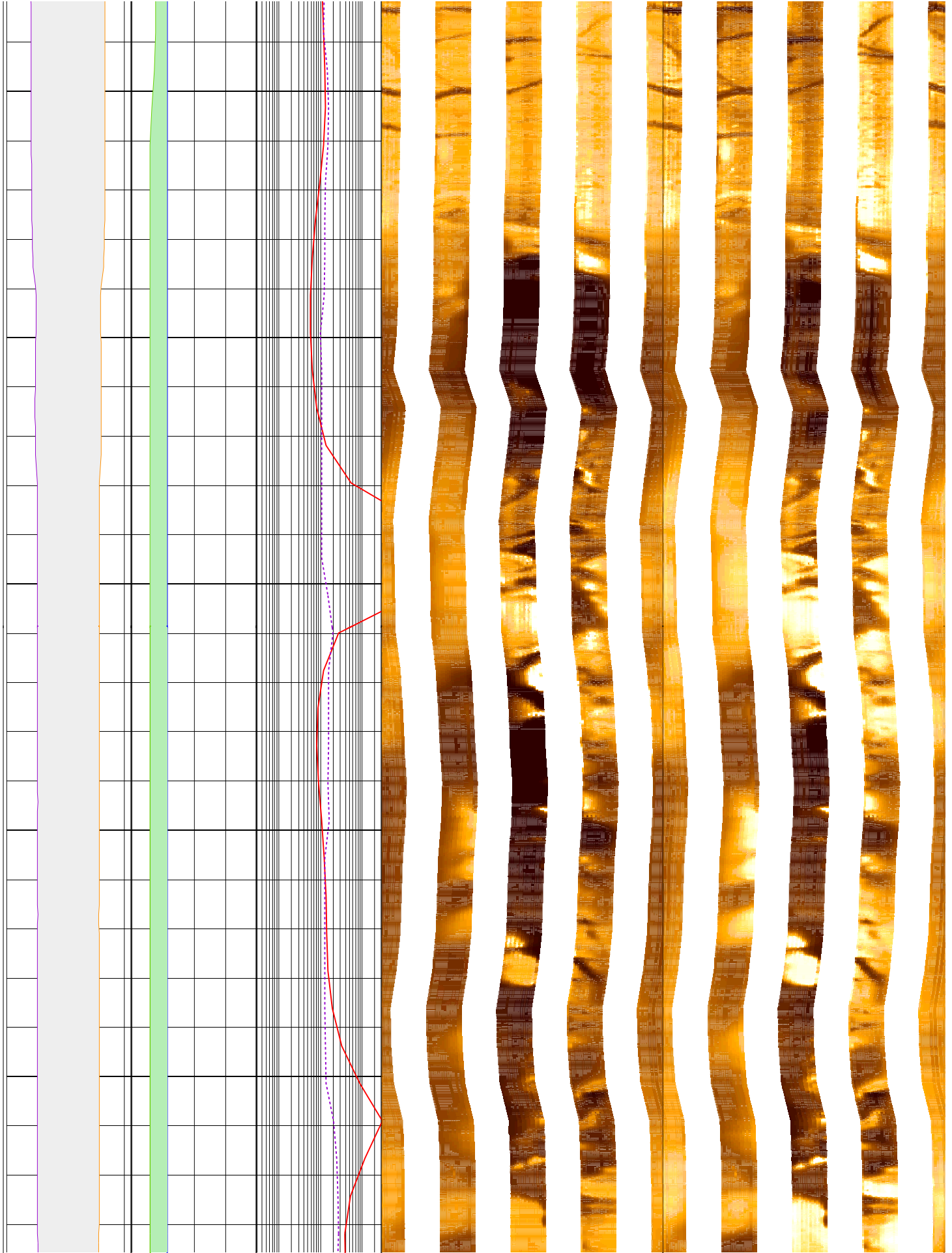
92

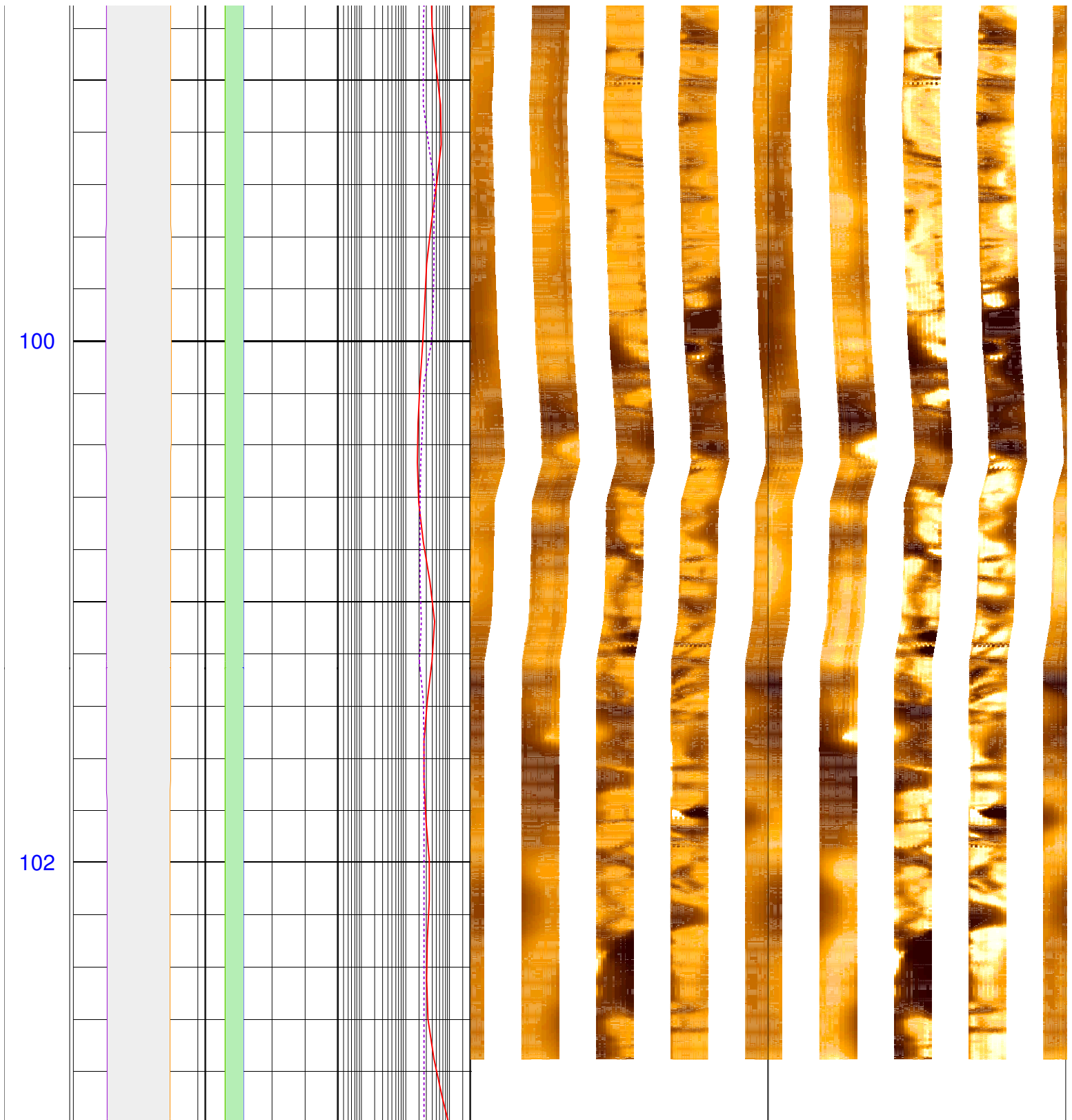


94

96

98





<b>MD</b> <b>1 : 20</b> <b>m</b>	lgp_Area_	lgp_Area_	IDPH_p2 0.3 (ohm.m) 300	FMS_p2_static Horizontal Scale: 1 : 6.981 Orientation North		FMS_p2-dynamic Horizontal Scale: 1 : 6.981 Orientation North	
	C1_p2 16 (in) -16	HCGR_p2 0 (gAPI) 20	IMPH_p2 0.3 (ohm.m) 300	0    120    240    360	Resistive    FMS4 Image    Conductive		
	C2_p2 -16 (in) 16	HSGR_p2 0 (gAPI) 20			0    120    240    360	Resistive    FMS4 Image    Conductive	