

Schlumberger

GEOFRAME
PROCESSED
INTERPRETATION

Processed FMS Images Depth Reference: m WMSF

* A Mark of Schlumberger

Using the following logs: FMS/HNGS/GPIT

COMPANY: Lamont Doherty Earth Observatory
WELL: Expedition 329 Site U1368F
FIELD: South Pacific Gyre
Rig: JOIDES Resolution
Ocean: Pacific
COUNTRY: USA
Date Logged: 17-Nov-2010 Date Processed:
Well Location: Latitude: S 27.9167*
Longitude: W 123 * 9.6433'
Elevations: KB: 11m DF: 11m GL: -3751.9m
API Number: Job Number:

FOLD HERE The well name, location and borehole reference data were furnished by the customer.

All interpretations are opinions based on inferences from electrical or other measurements and we cannot, and do not guarantee the accuracy or correctness of any interpretation, and we shall not, except in the case of gross or willful negligence on our part, be liable or responsible for any loss, costs, damages or expenses incurred or sustained by anyone resulting from any interpretations made by any of our officers, agents or employees. These interpretations are also subject to Clause 4 of our General Terms and Conditions as set out in our current Price Schedule.

Field Recording:	Location: Houston	Software Version: 17C0-154	Engineer: C. Furman
------------------	-------------------	----------------------------	---------------------

Office Recording:	ICS Center:	Baseline:	Log Analyst:
-------------------	-------------	-----------	--------------

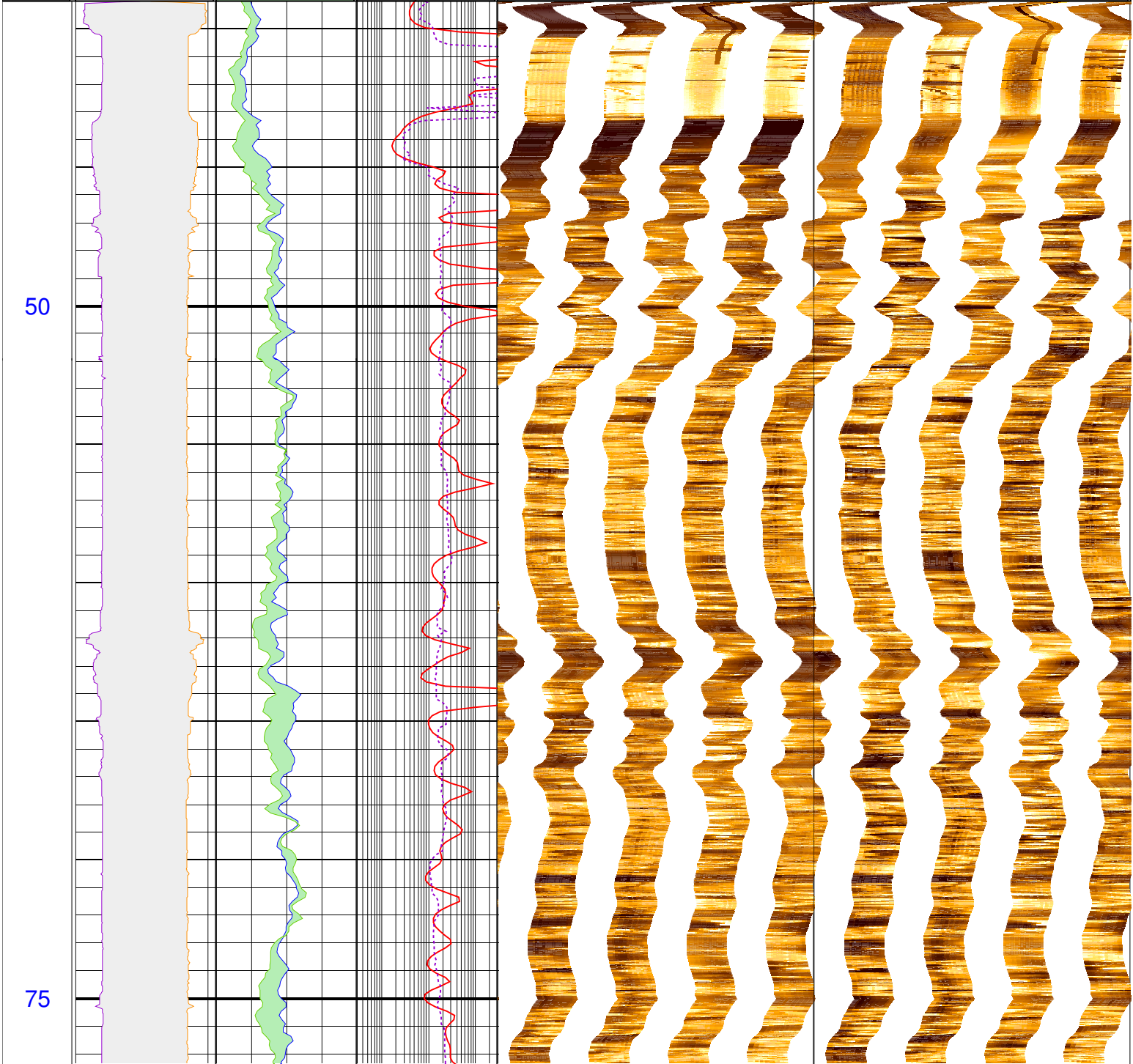
Mud and Borehole Measurements:

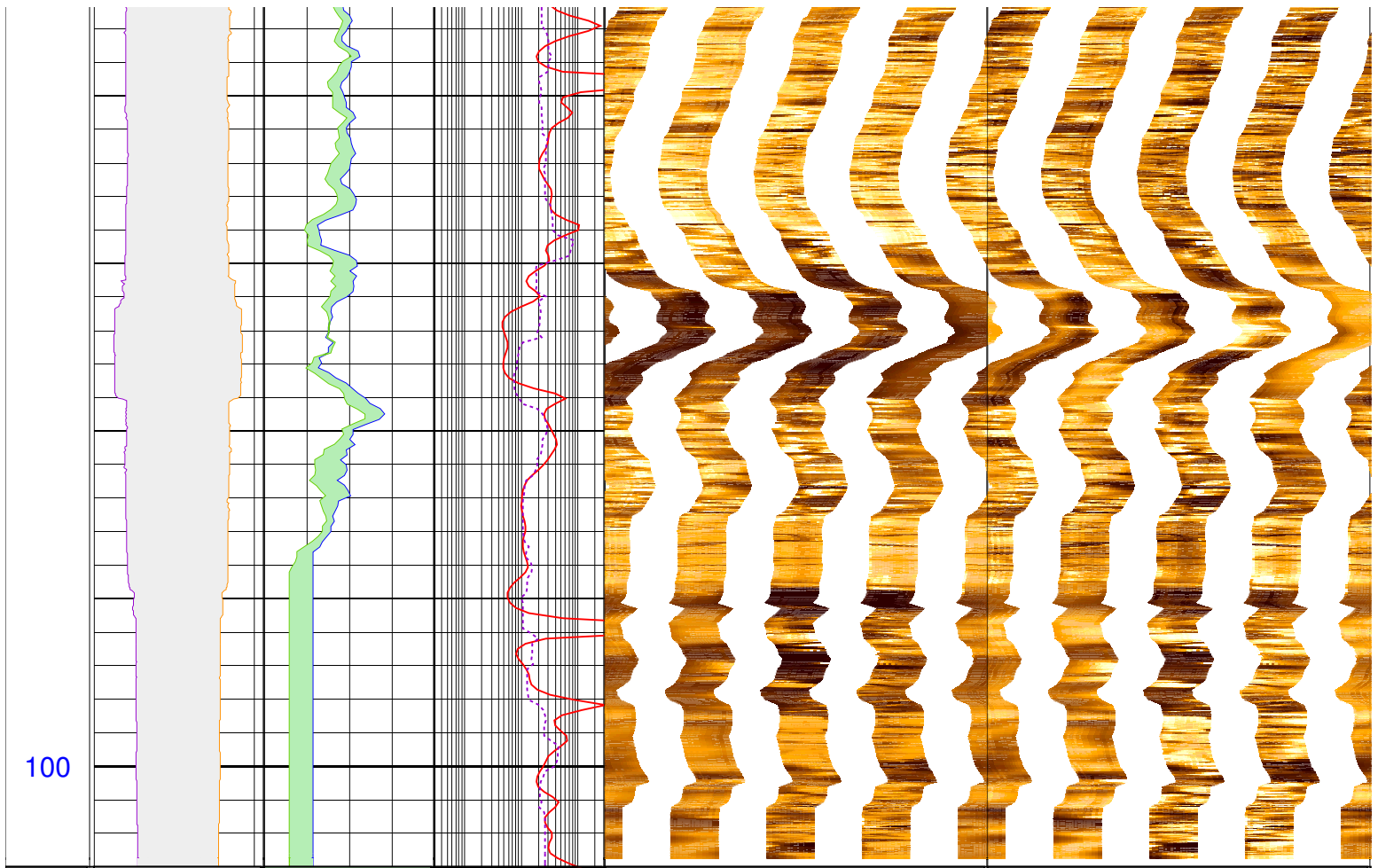
Rm @ Measured Temperature: @	BHT: 100degC	Bitsize: 11.438in
Rmf @ Measured Temperature: @	Type Fluid in Hole:	Seawater
Rmc @ Measured Temperature: @	Mud Density: 1.03g/cm3	

Remarks:

Data depth-shifted and depth-matched. Depth reference: m WMSF. Drill pipe at 34 m WMSF. Water depth at 3751.9 m WRF. Average peak-to-peak heave: 0.4-2 m. Wireline heave compensator used during the logging operation.

	C2_p2 -16 (in) 16	HSGR_p2 0 (gAPI) 20		FMS_p2_static Horizontal Scale: 1 : 6.981 Orientation North	FMS_p2-dynamic Horizontal Scale: 1 : 6.981 Orientation North
	C1_p2 16 (in) -16	HCGR_p2 0 (gAPI) 20	IMPH_p2 0.3 (ohm.m) 300	0 120 240 360	0 120 240 360
MD 1 : 200 m	lgp_Area_	lgp_Area_	IDPH_p2 0.3 (ohm.m) 300	Resistive FMS4 Image Conductive	Resistive FMS4 Image Conductive





MD 1 : 200 m	lgp_Area_	lgp_Area_	IDPH_p2 0.3 (ohm.m) 300	FMS_p2_static Horizontal Scale: 1 : 6.981 Orientation North		FMS_p2-dynamic Horizontal Scale: 1 : 6.981 Orientation North	
	C1_p2 16 (in) -16	HCGR_p2 0 (gAPI) 20	IMPH_p2 0.3 (ohm.m) 300	0 120 240 360	0 120 240 360		
	C2_p2 -16 (in) 16	HSGR_p2 0 (gAPI) 20		Resistive FMS4 Image Conductive		Resistive FMS4 Image Conductive	