

DISCLAIMER

THE USE OF AND RELIANCE UPON THIS RECORDED-DATA BY THE HEREIN NAMED COMPANY (AND ANY OF ITS AFFILIATES, PARTNERS, REPRESENTATIVES, AGENTS, CONSULTANTS AND EMPLOYEES) IS SUBJECT TO THE TERMS AND CONDITIONS AGREED UPON BETWEEN SCHLUMBERGER AND THE COMPANY, INCLUDING: (a) RESTRICTIONS ON USE OF THE RECORDED-DATA; (b) DISCLAIMERS AND WAIVERS OF WARRANTIES AND REPRESENTATIONS REGARDING COMPANY'S USE OF AND RELIANCE UPON THE RECORDED-DATA; AND (c) CUSTOMER'S FULL AND SOLE RESPONSIBILITY FOR ANY INFERENCE DRAWN OR DECISION MADE IN CONNECTION WITH THE USE OF THIS RECORDED-DATA.

OTHER SERVICES1 OS1: FMS OS2: UBI OS3: DITE OS4: HLDS/APS OS5: GBM	OTHER SERVICES2 OS1: OS2: OS3: OS4: OS5:
---	---

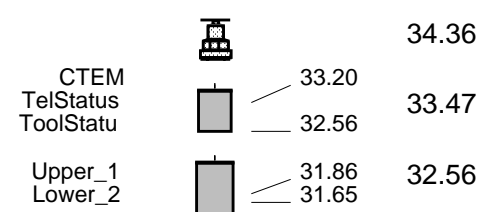
REMARKS: RUN NUMBER 1 Depths originally recorded from drill floor as main depth reference. Log files were played back with offset of 1570m to force sea floor as the new reference. This log references sea floor at 0 m. TD of hole at 522m (driller), 520 m (log) Active Heave Compensation on for all logs. Tools run inside drill pipe and drill collars thru bit release and BHA. 9 7/8" bit released prior to logging. ID of pipe at minimum is 4.1" diameter. MCD centralizers run to centralize Dipole Sonic. GPIT run with tool for Active Heave Compensator testing (AHC). GR spike at 75m possibly related to APS neutron activation by correcting wrap on cable drum requiring toolstring to descend in order to repair. Repeat section shows GR at slightly higher level due to Neutron activation of the borehole. Multiple attempts at logging this hole were made, with last attempt being successful after full wiper trip and drilling through obstructions. Callipers used from FMS in Borehole Profile.	REMARKS: RUN NUMBER 2
--	-----------------------

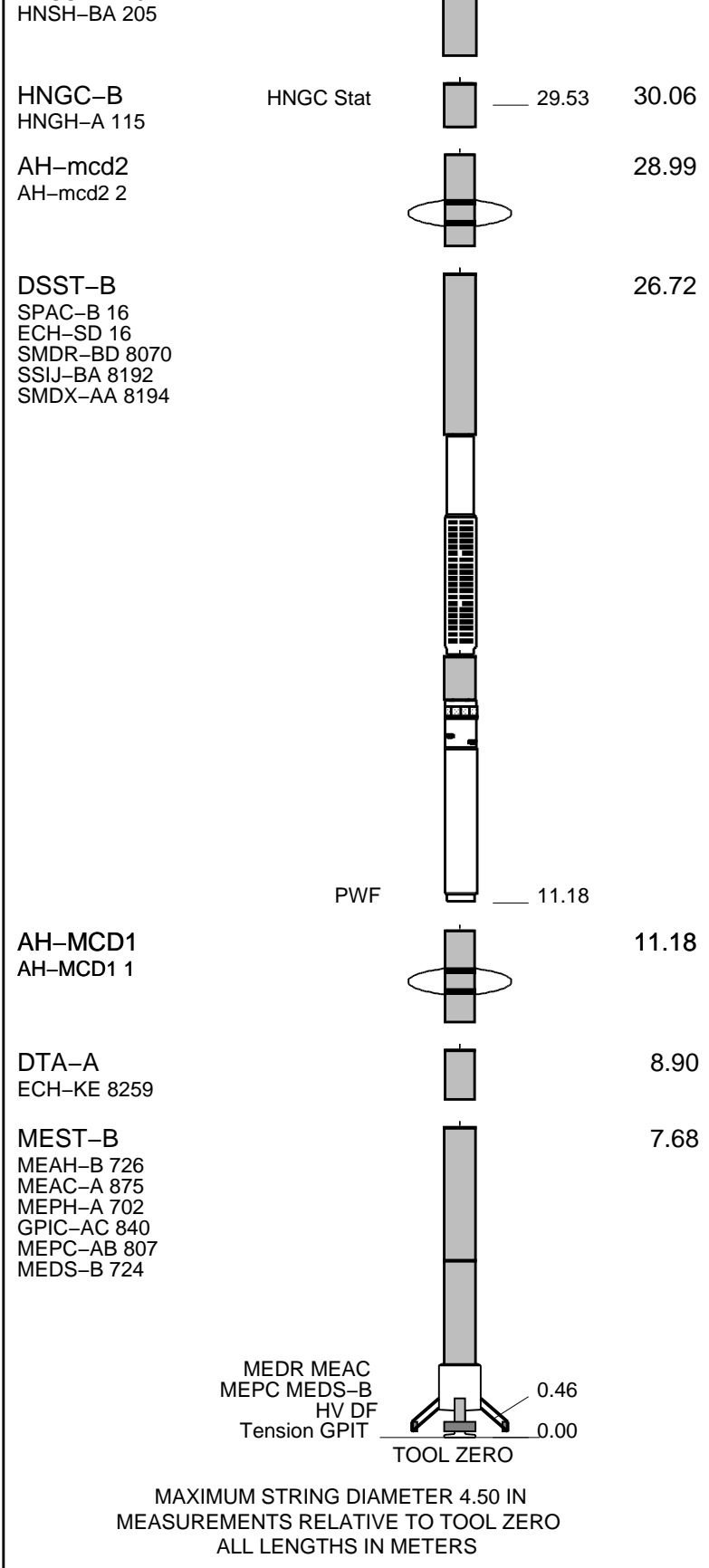
RUN 1			RUN 2		
SERVICE ORDER #:			SERVICE ORDER #:		
PROGRAM VERSION:		17C0-154	PROGRAM VERSION:		
FLUID LEVEL:			FLUID LEVEL:		
LOGGED INTERVAL	START	STOP	LOGGED INTERVAL	START	STOP

EQUIPMENT DESCRIPTION

RUN 1	RUN 2
SURFACE EQUIPMENT GSR-U 616008 WITM (DTS)-A	

DOWNHOLE EQUIPMENT	
LEH-QT LEH-QT 301	34.36
DTC-H ECH-KC 1777	33.47
HNGS-BA HNGS-BA 194	32.56





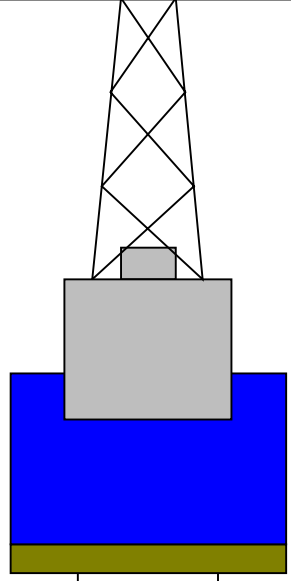
Production String	(in)	(M)	Well Schematic	(M)	(in)	Casing String
	OD	ID		MD	MD	

Kelly Bushing Elevation
Derrick Floor Elevation

Mean Sea Level

-1570
-1570

-1550



4.1



0
128

522

4.1
9.875

Sea Floor
Open Hole

Total Depth

Input DLIS Files

DEFAULT	FMS_DSI_NGS_042LUP	FN:75	PRODUCER	21-Jan-2011 15:02	2089.4 M	1562.1 M
---------	--------------------	-------	----------	-------------------	----------	----------

Output DLIS Files

DEFAULT	FMS_DSI_NGS_121PUP	FN:11	PRODUCER	11-Feb-2011 09:03	518.9 M	-7.9 M
---------	--------------------	-------	----------	-------------------	---------	--------

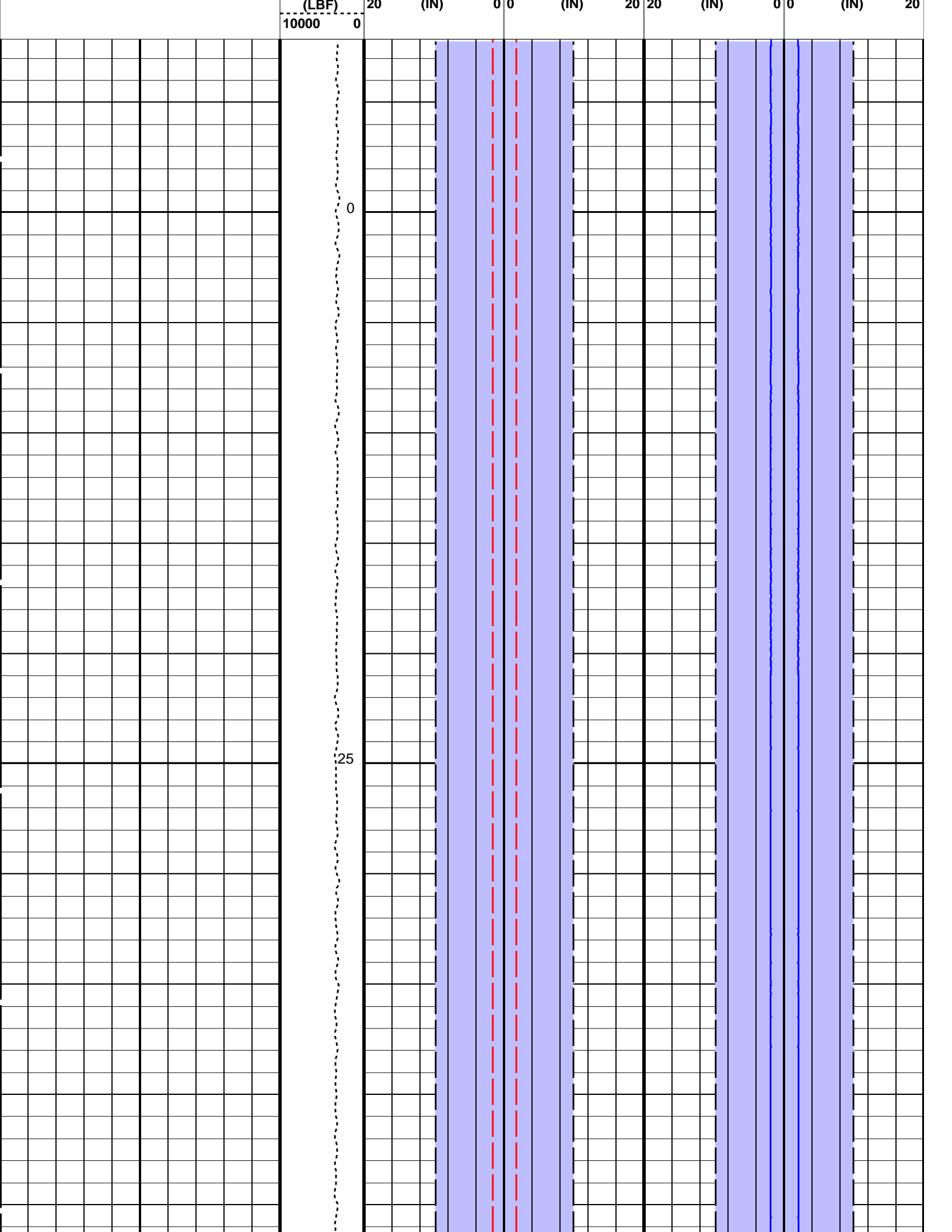
OP System Version: 17C0-154

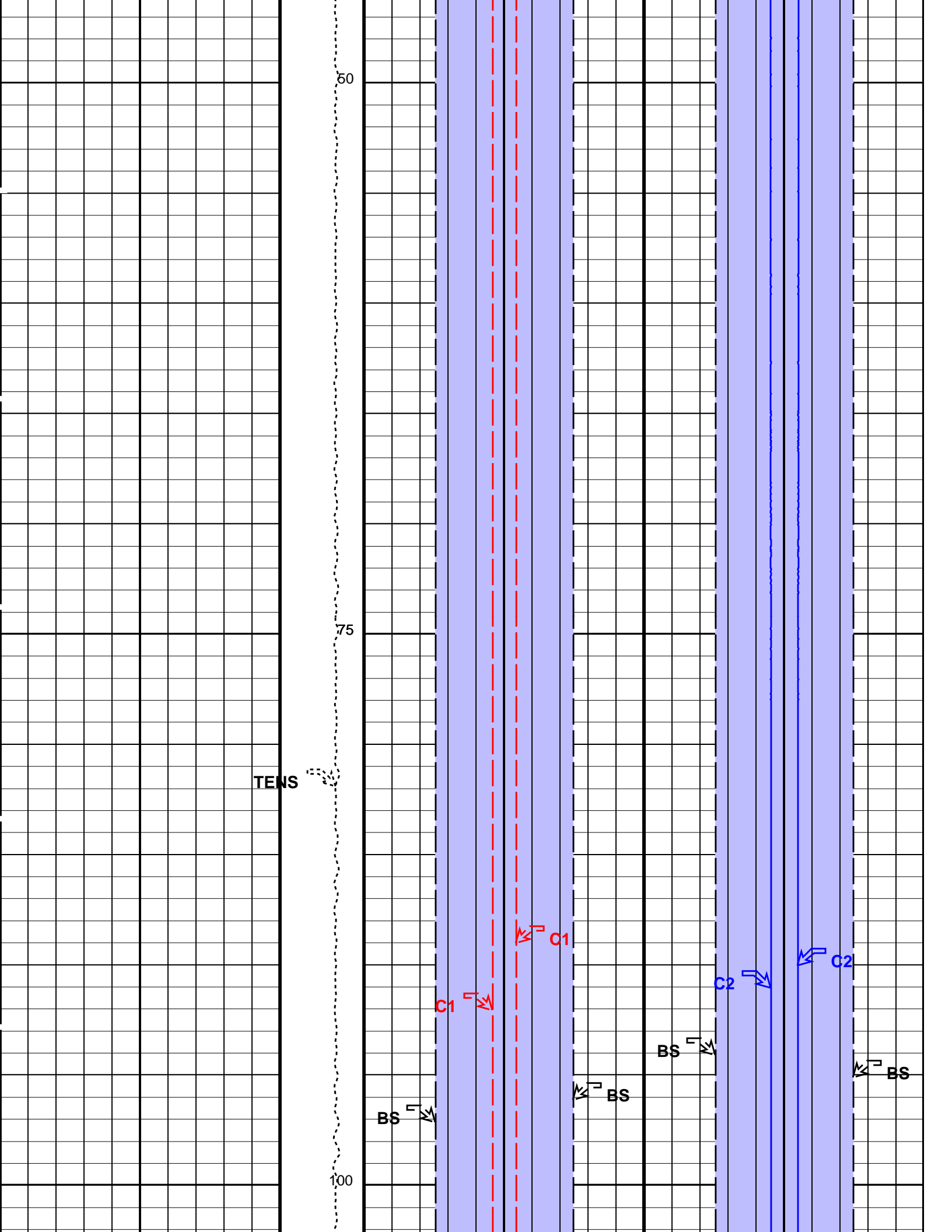
MEST-B	SRPC-3971-Q1_2010_OP17	DTA-A	17C0-154
DSST-B	17C0-154	HNGC-B	SPC-3961-OP17_NUCL
HNGS-BA	SPC-3961-OP17_NUCL	DTC-H	17C0-154

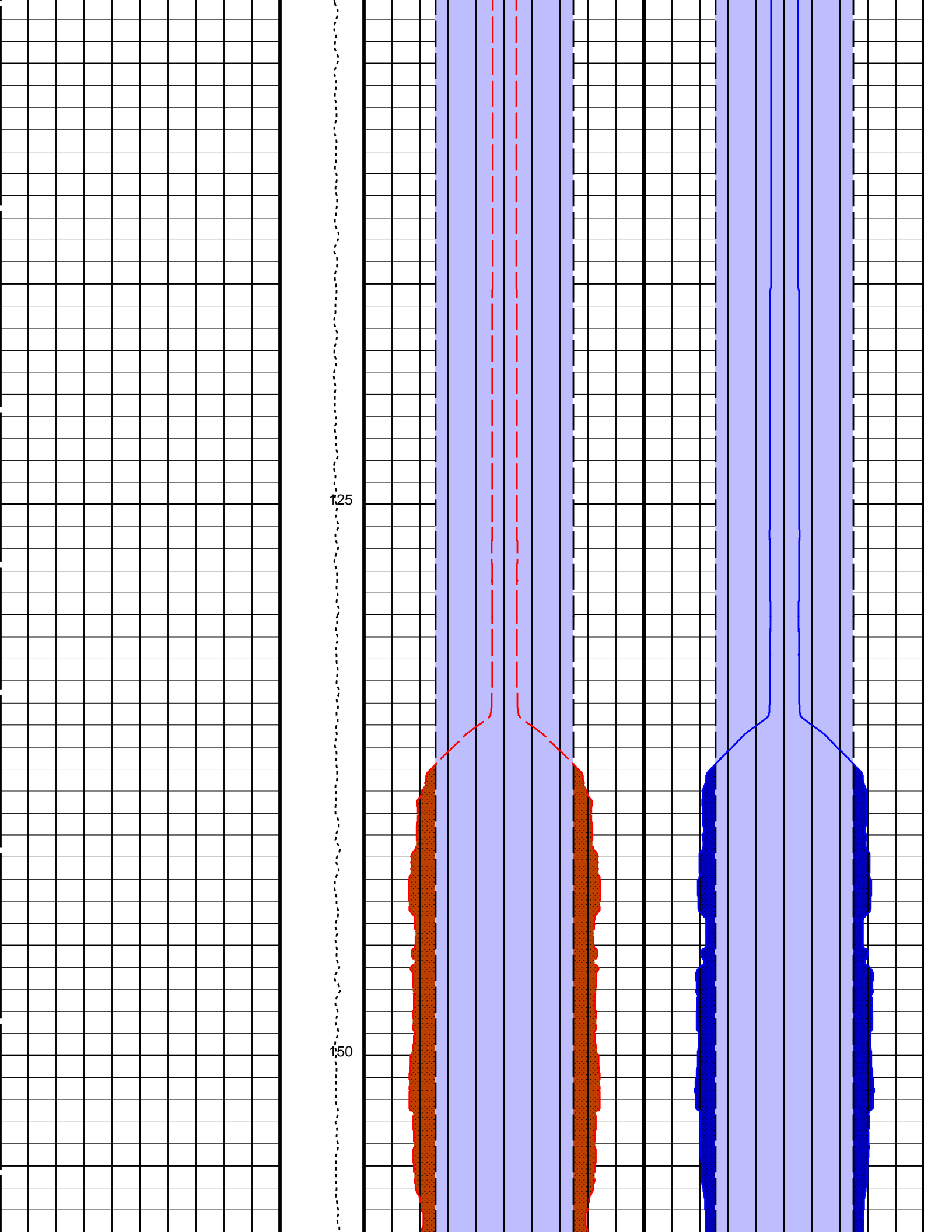
PIP SUMMARY

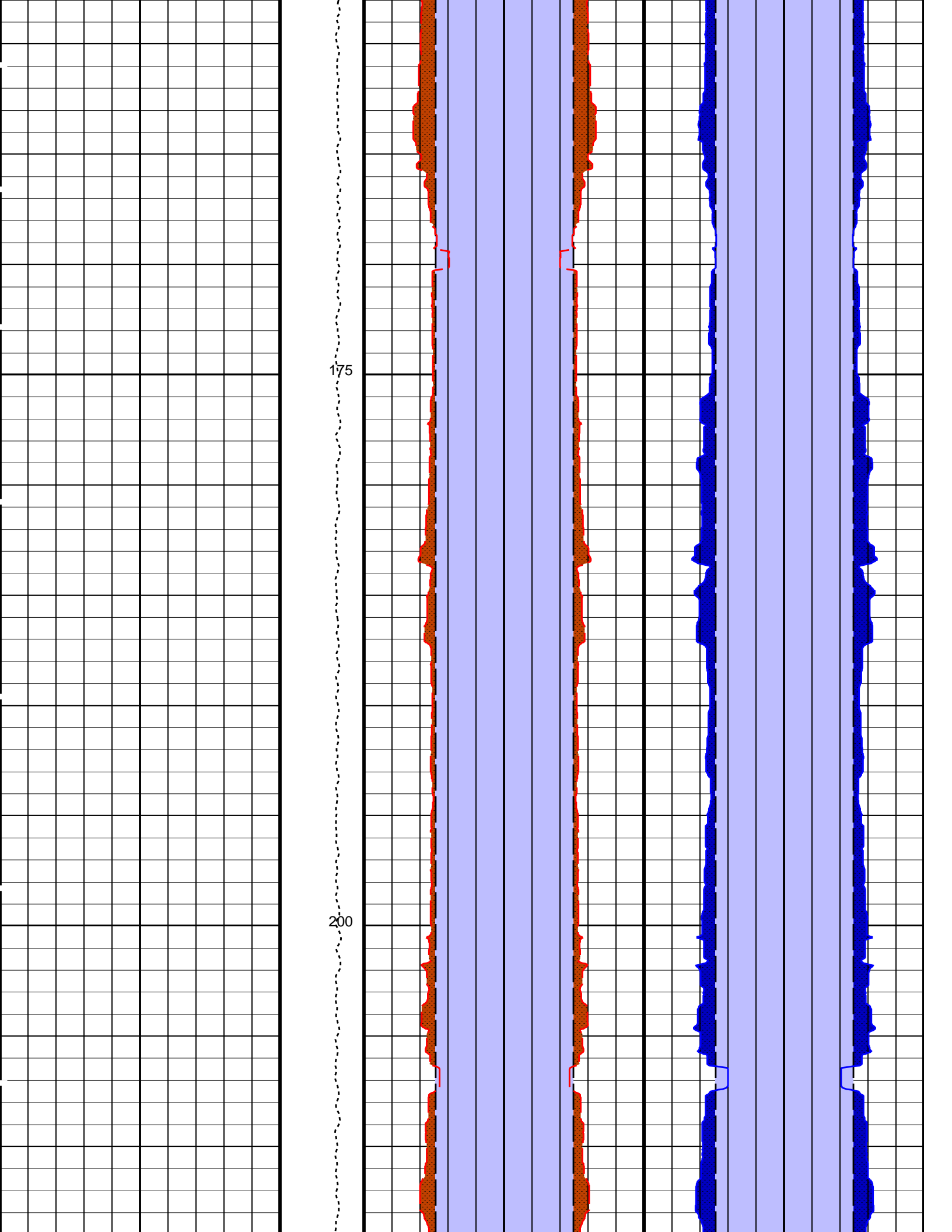
Time Mark Every 60 S

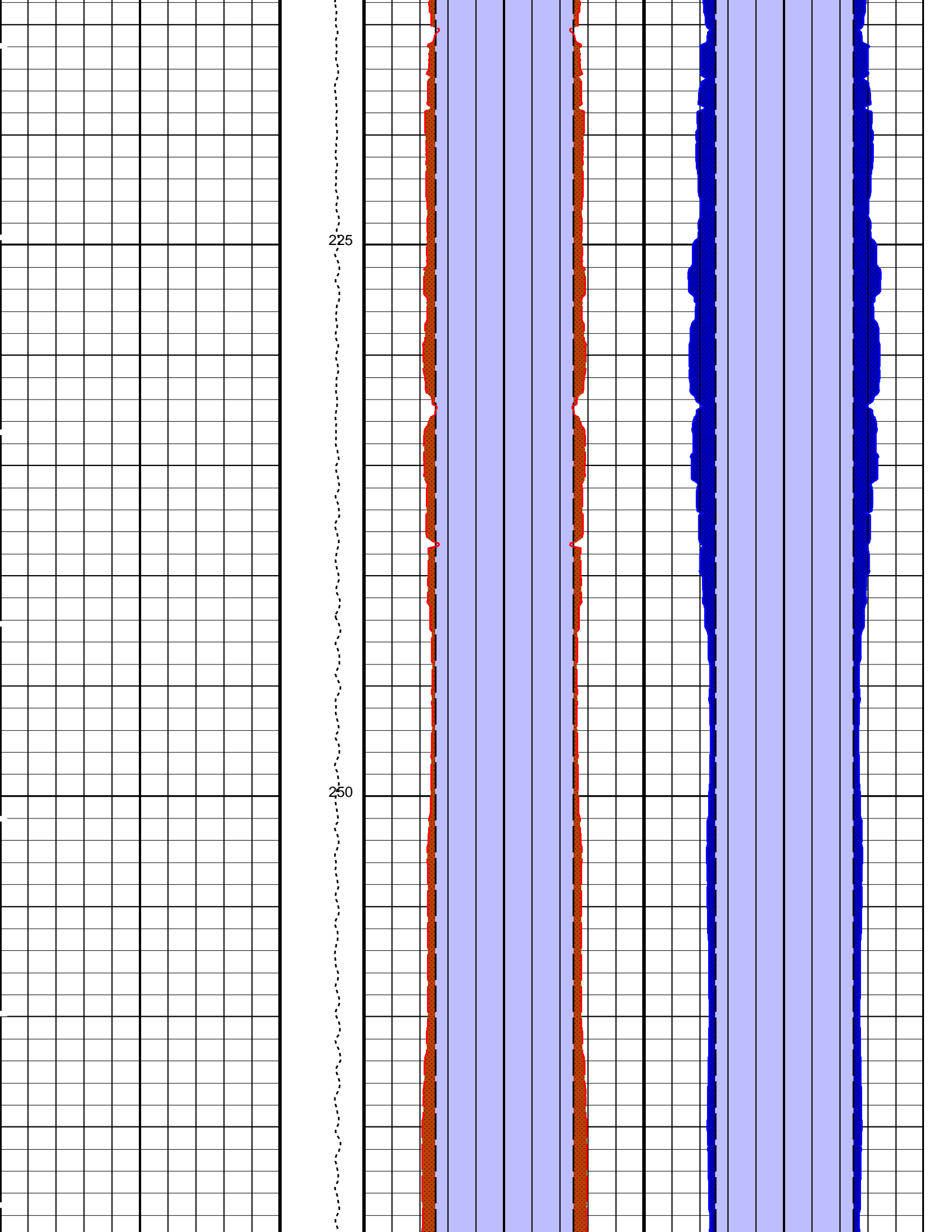
	Area From BS to BS_1		Area From BS_3 to BS_2	
	Area From C1 to BS	Area From BS_1 to C1_1	Area From C2 to BS_3	Area From BS_2 to C2_1
	Caliper 1 (C1)	Caliper 1 (C1)	Caliper 2 (C2)	Caliper 2 (C2)
	20 (IN)	0 0 (IN) 20	20 (IN) 0 0	(IN) 20
Tension (TENS)	Bit Size (BS)	Bit Size (BS)	Bit Size (BS)	Bit Size (BS)





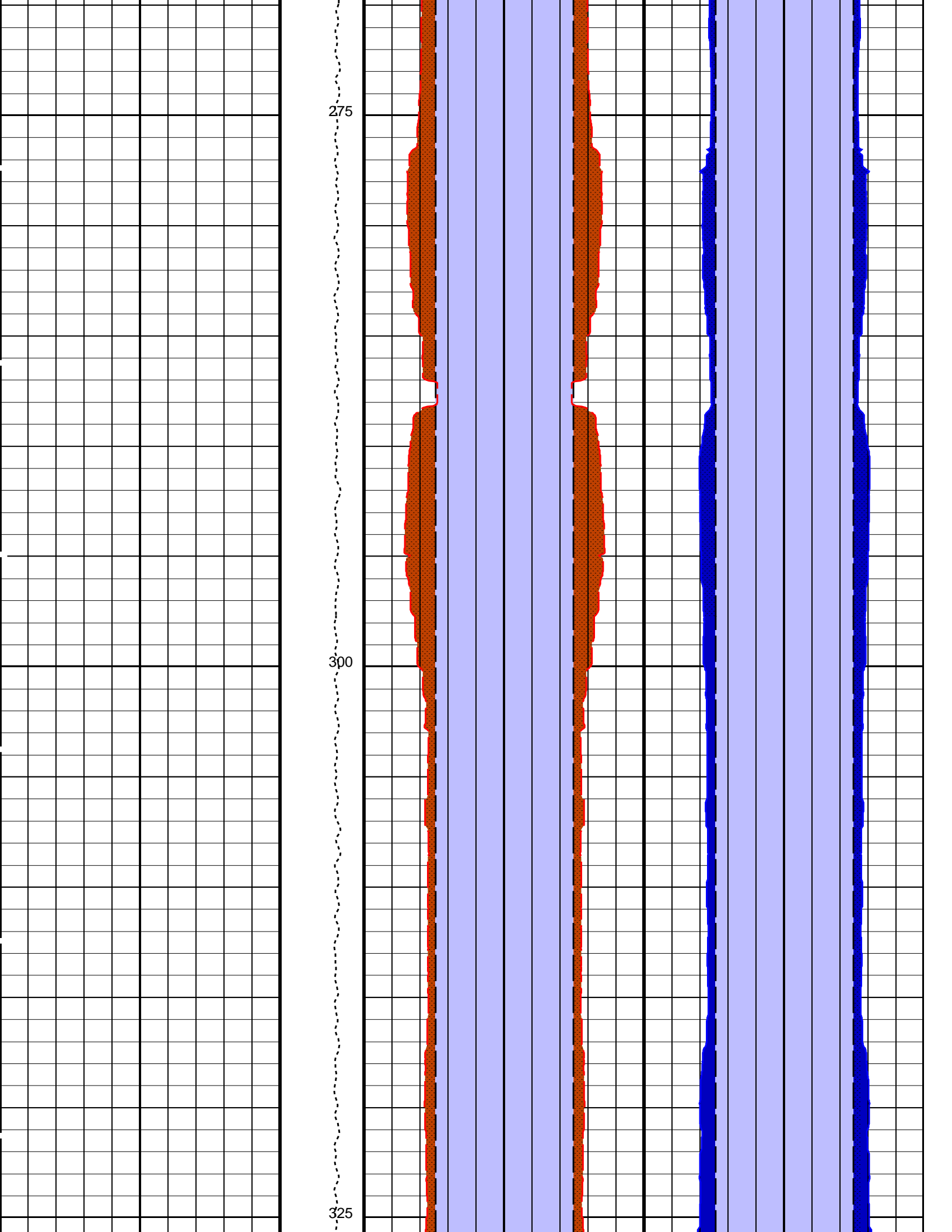


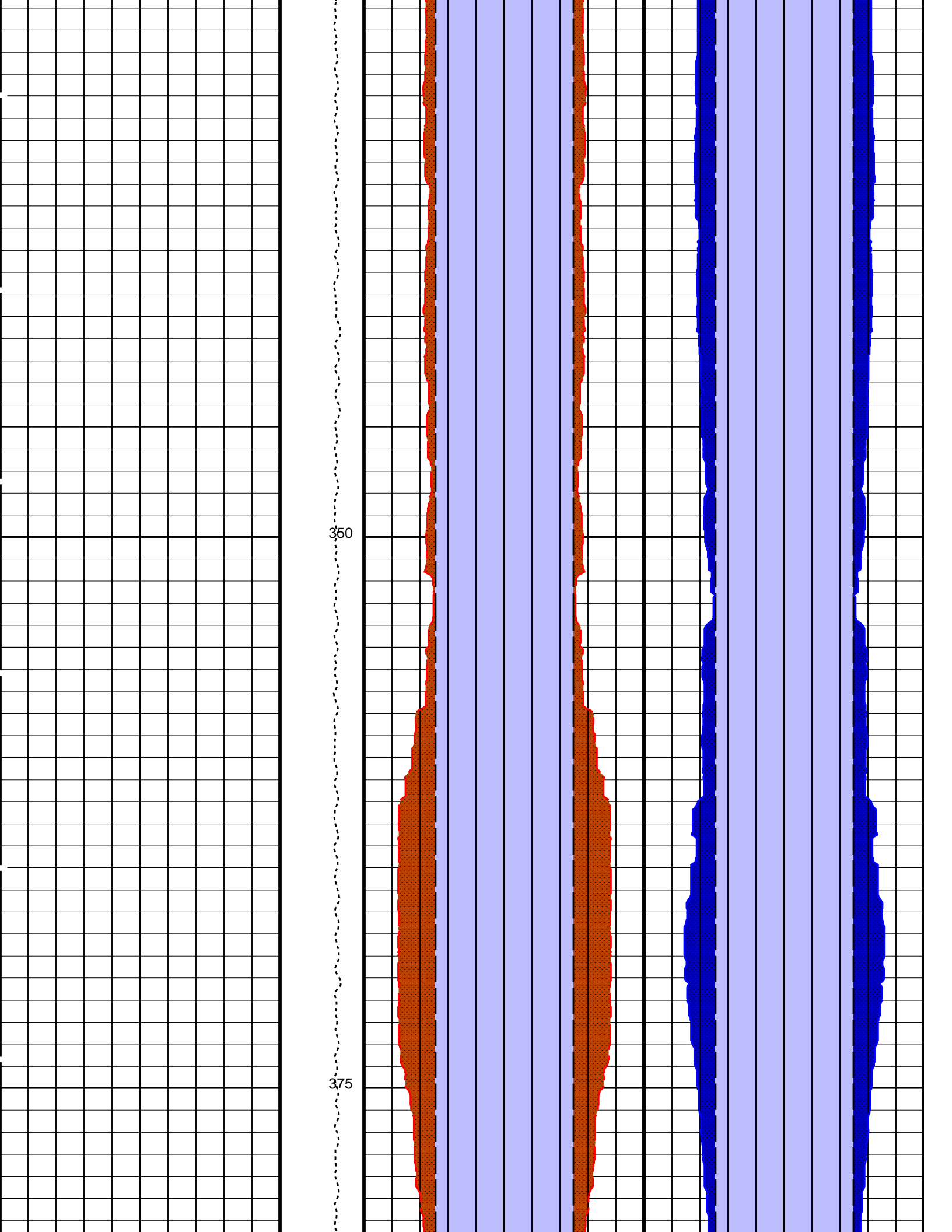


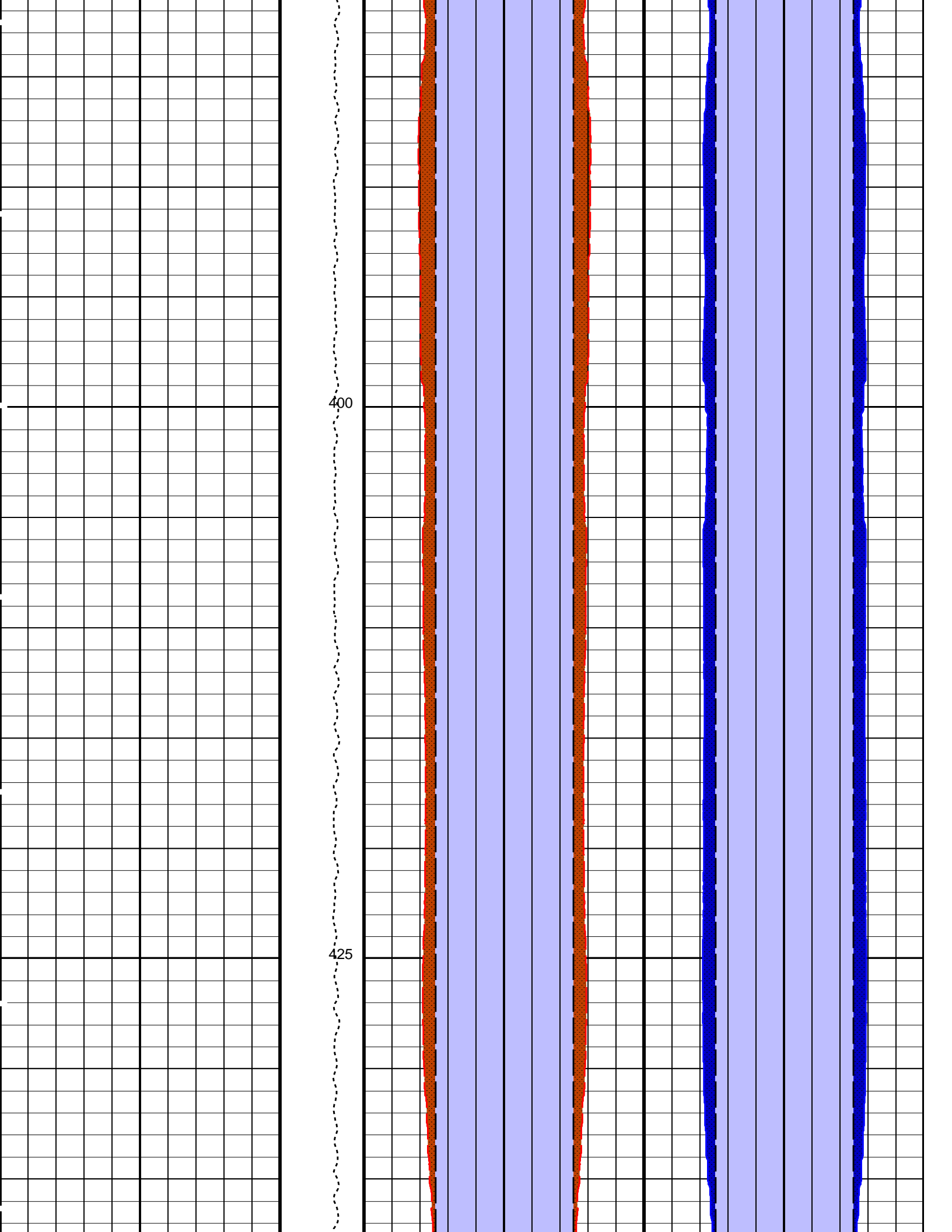


225

250







TENS

450

475

BS

C1

C1

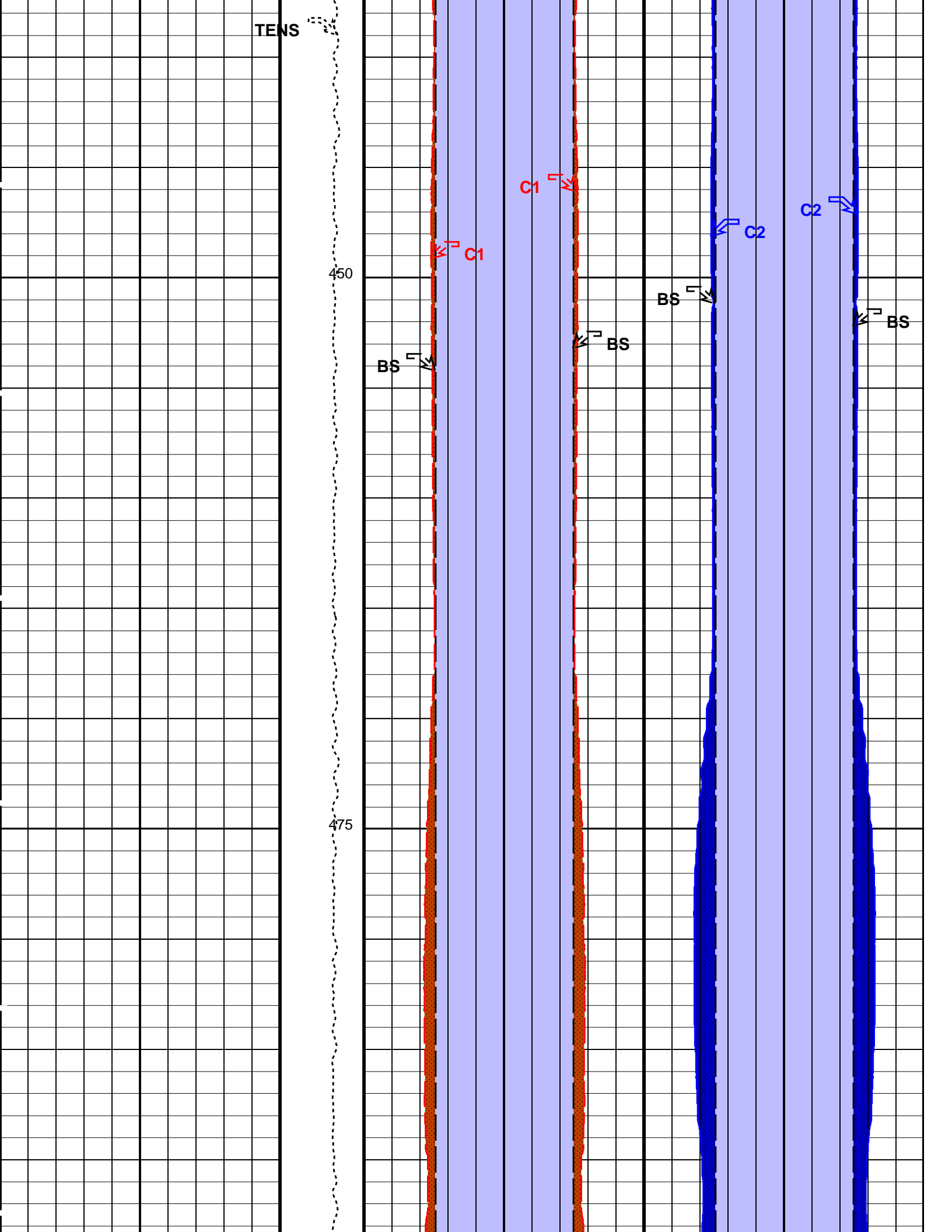
BS

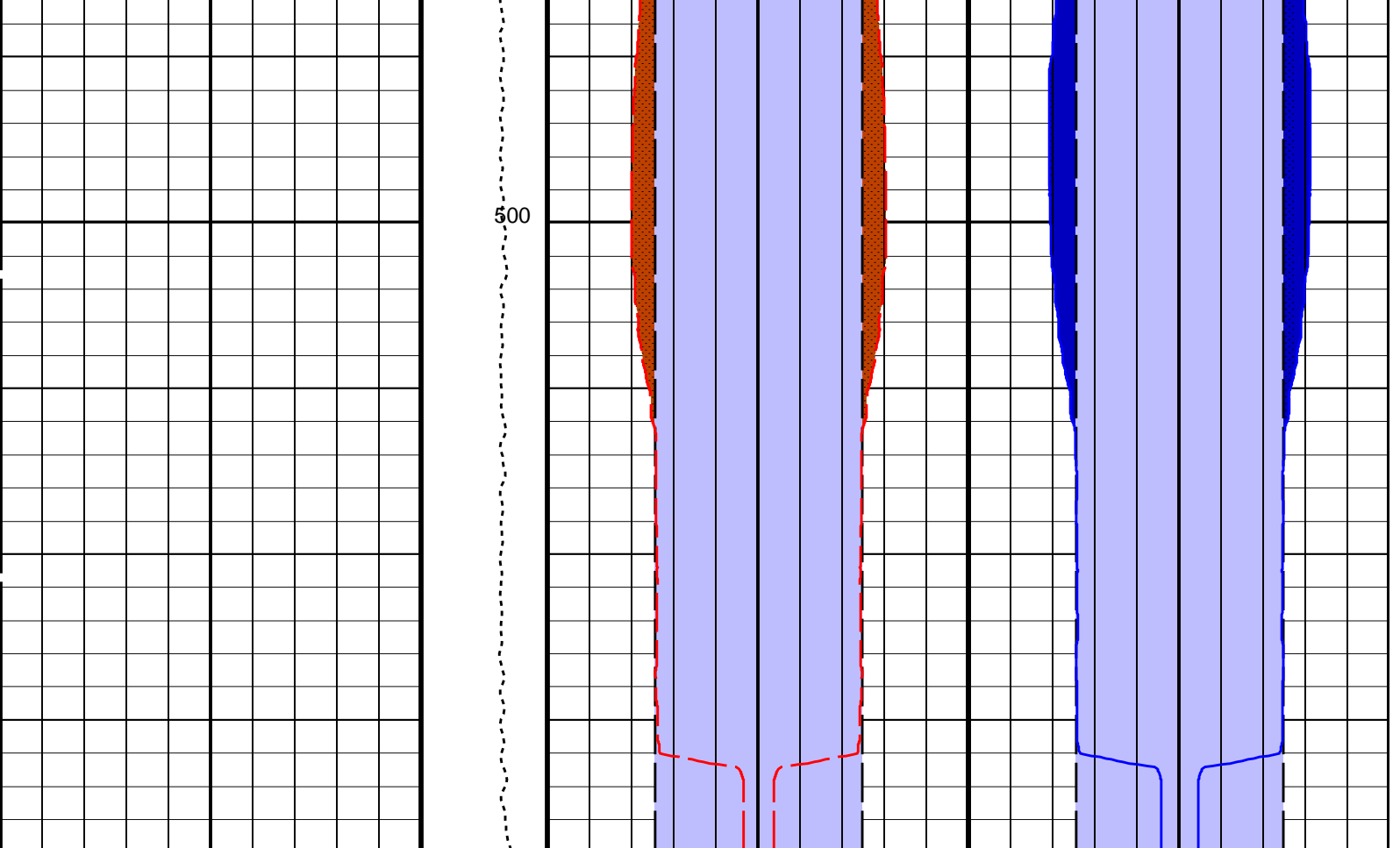
BS

C2

C2

BS





Tension (TENS) (LBF)	Bit Size (BS)		Bit Size (BS)		Bit Size (BS)		Bit Size (BS)						
	20	(IN)	0	0	(IN)	20	20	(IN)	0	0	(IN)	20	
10000	0	Caliper 1 (C1)		Caliper 1 (C1)		Caliper 2 (C2)		Caliper 2 (C2)					
		20	(IN)	0	0	(IN)	20	20	(IN)	0	0	(IN)	20
		Area From C1 to BS		Area From BS_1 to C1_1		Area From C2 to BS_3		Area From BS_2 to C2_1					
		Area From BS to BS_1				Area From BS_3 to BS_2							

PIP SUMMARY

Time Mark Every 60 S

Parameters

DLIS Name	Description	Value
System and Miscellaneous		
BS	Bit Size	9.875 IN
DO	Depth Offset for Playback	-1570.0 M
PP	Playback Processing	NORMAL

Format: BHP Vertical Scale: 1:200 Graphics File Created: 11-Feb-2011 09:03

OP System Version: 17C0-154

MEST-B	SRPC-3971-Q1_2010_OP17	DTA-A	17C0-154
DSST-B	17C0-154	HNGC-B	SPC-3961-OP17_NUCL
HNGS-BA	SPC-3961-OP17_NUCL	DTC-H	17C0-154

Input DLIS Files

DEFAULT	FMS_DSI_NGS_042LUP	FN:75	PRODUCER	21-Jan-2011 15:02	2089.4 M	1562.1 M
---------	--------------------	-------	----------	-------------------	----------	----------

Output DLIS Files

DEFAULT FMS_DSI_NGS_121PUP FN:11 PRODUCER 11-Feb-2011 09:03

Input DLIS Files

DEFAULT FMS_DSI_NGS_038LUP FN:67 PRODUCER 21-Jan-2011 14:05 2089.4 M 1754.9 M

Output DLIS Files

DEFAULT FMS_DSI_NGS_120PUP FN:10 PRODUCER 11-Feb-2011 08:57 518.9 M 184.6 M

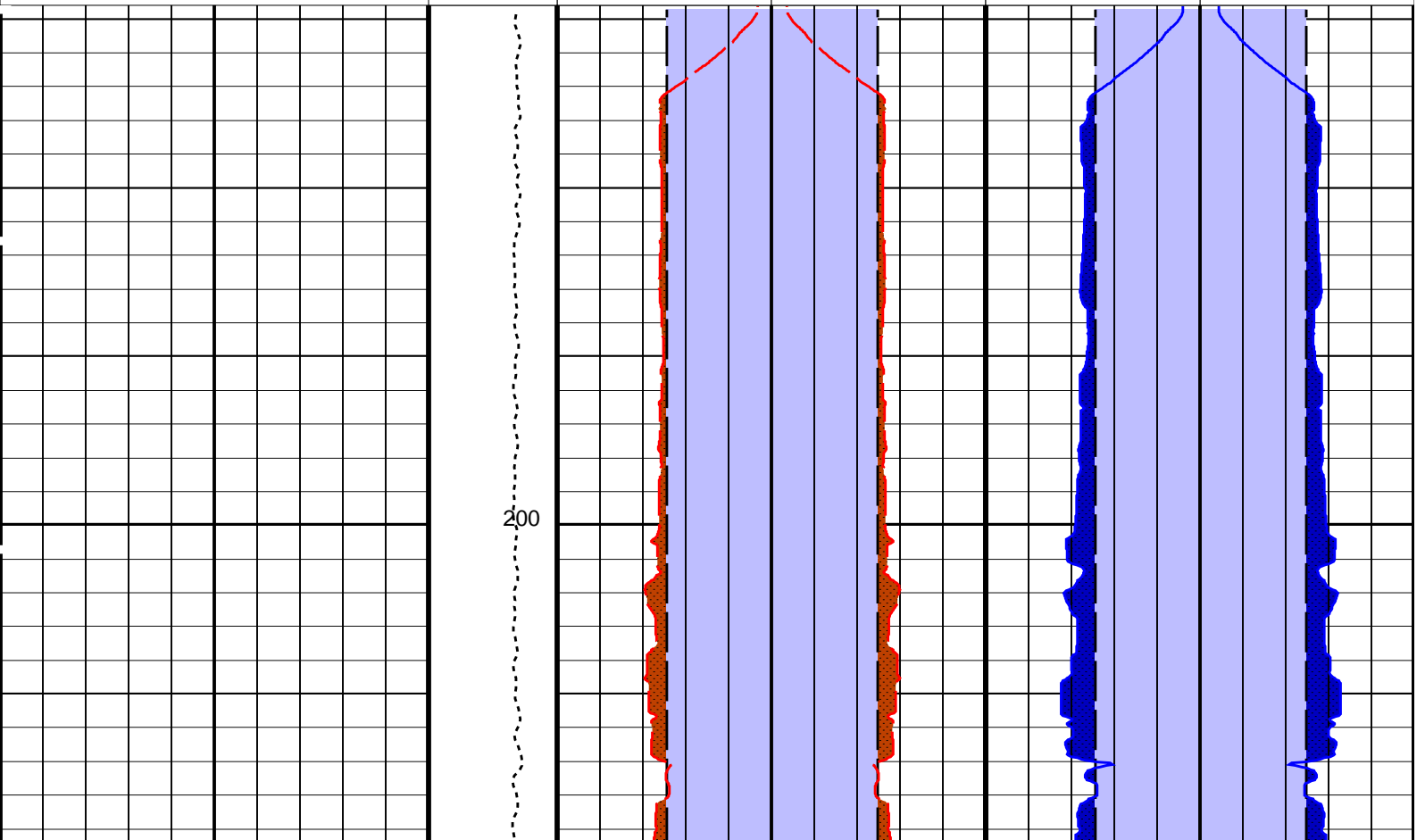
OP System Version: 17C0-154

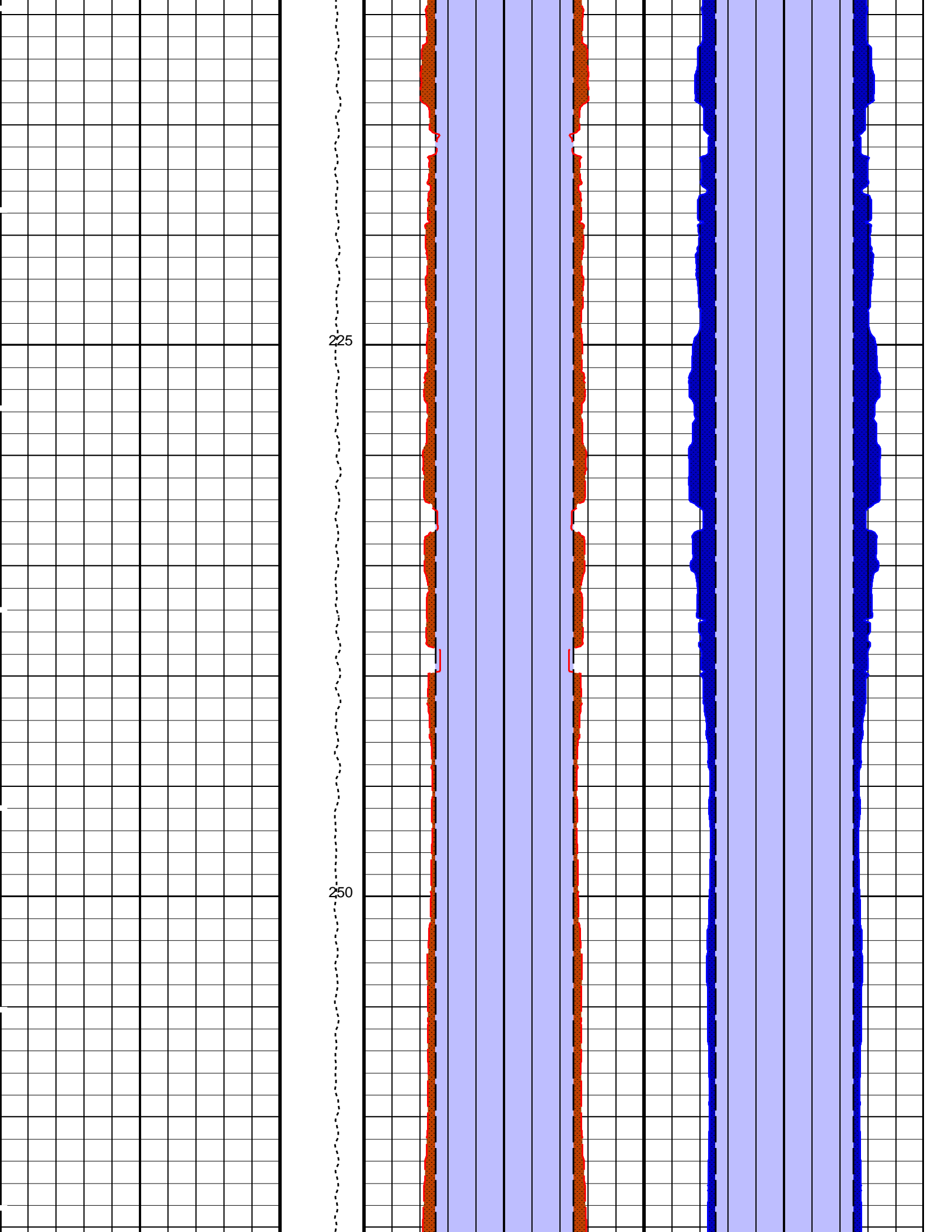
MEST-B	SRPC-3971-Q1_2010_OP17	DTA-A	17C0-154
DSST-B	17C0-154	HNGC-B	SPC-3961-OP17_NUCL
HNGS-BA	SPC-3961-OP17_NUCL	DTC-H	17C0-154

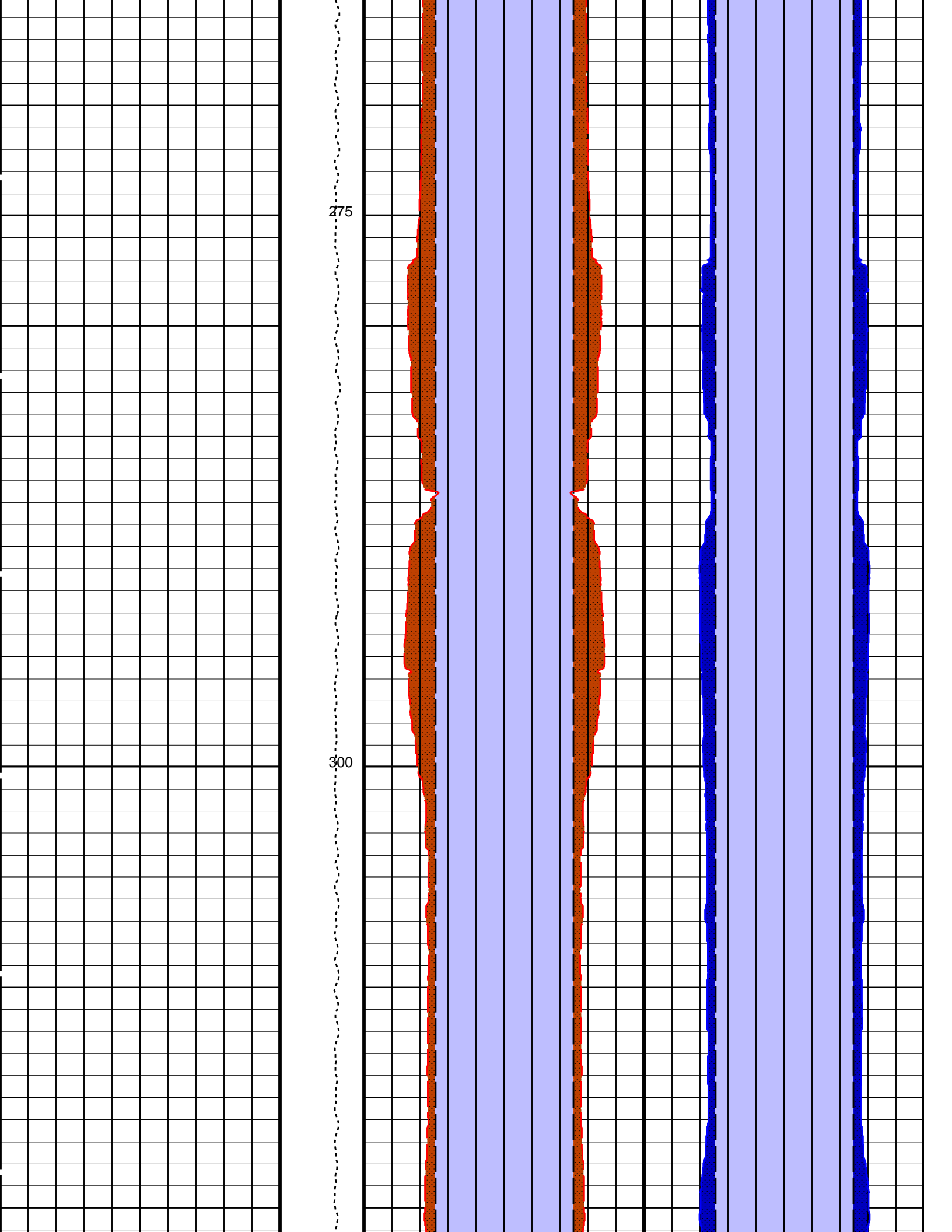
PIP SUMMARY

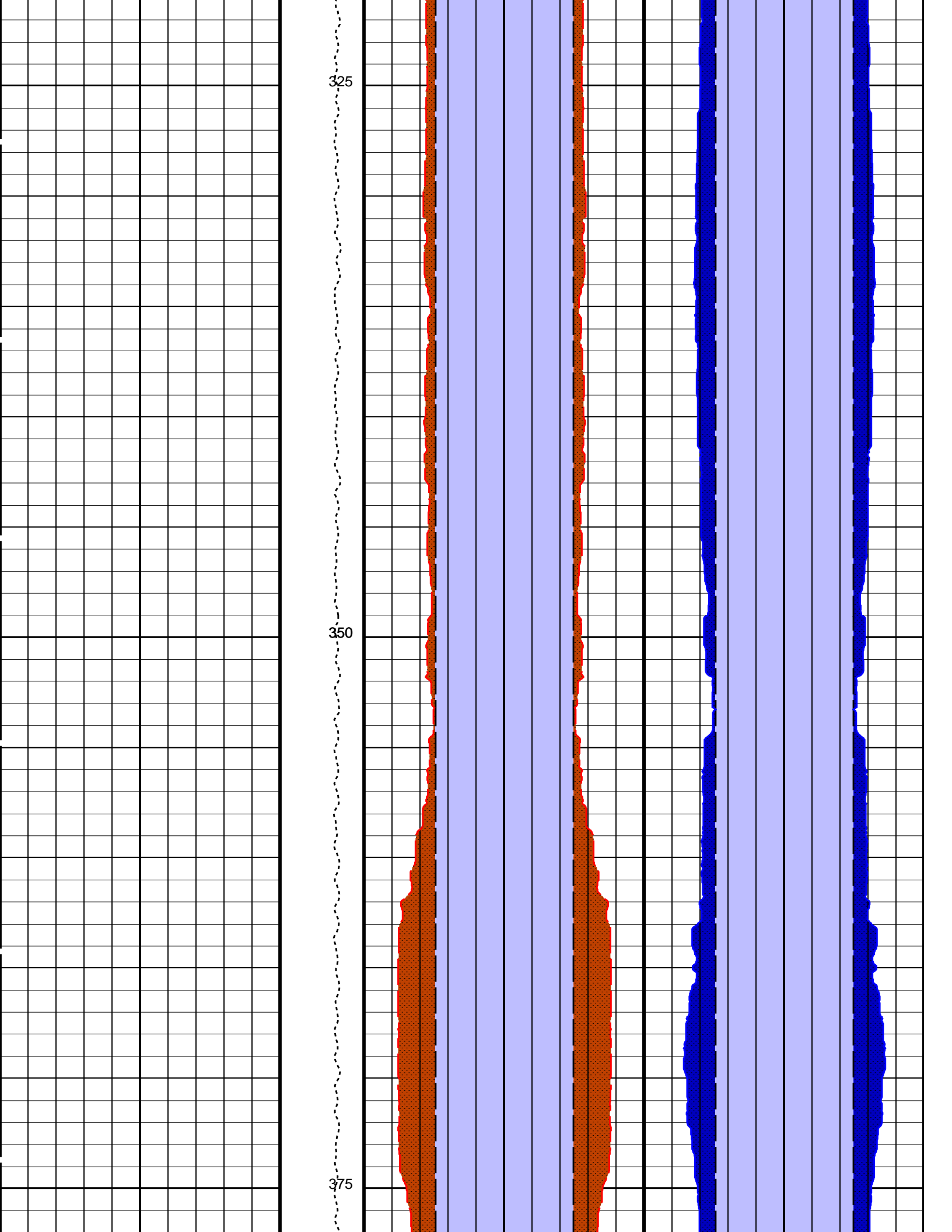
Time Mark Every 60 S

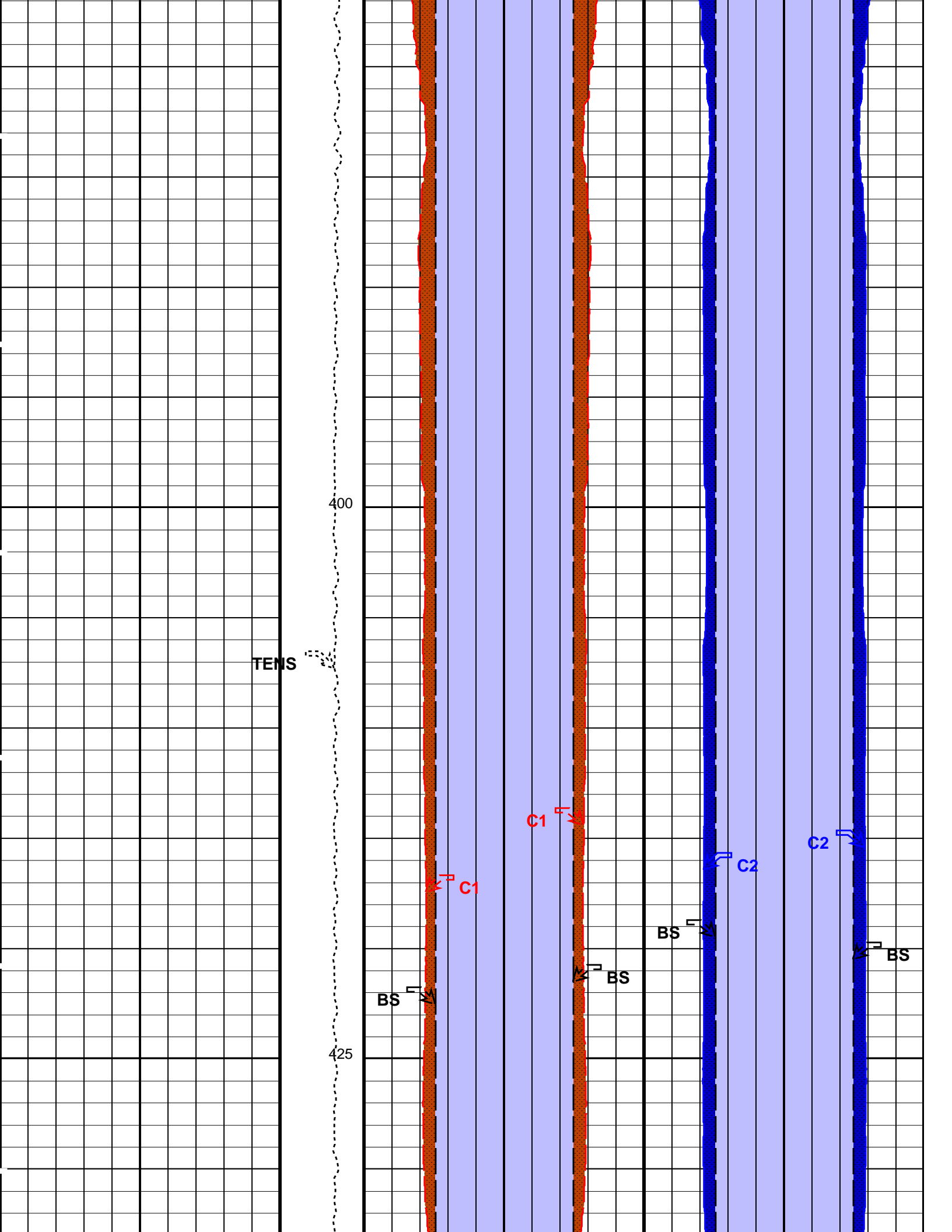
	Area From BS to BS_1		Area From BS_3 to BS_2	
	Area From C1 to BS	Area From BS_1 to C1_1	Area From C2 to BS_3	Area From BS_2 to C2_1
	Caliper 1 (C1)	Caliper 1 (C1)	Caliper 2 (C2)	Caliper 2 (C2)
	20 (IN)	0 0 (IN)	20 (IN)	0 0 (IN)
Tension (TENS) (LBF)	Bit Size (BS)	Bit Size (BS)	Bit Size (BS)	Bit Size (BS)
10000 0	20 (IN)	0 0 (IN)	20 (IN)	0 0 (IN)

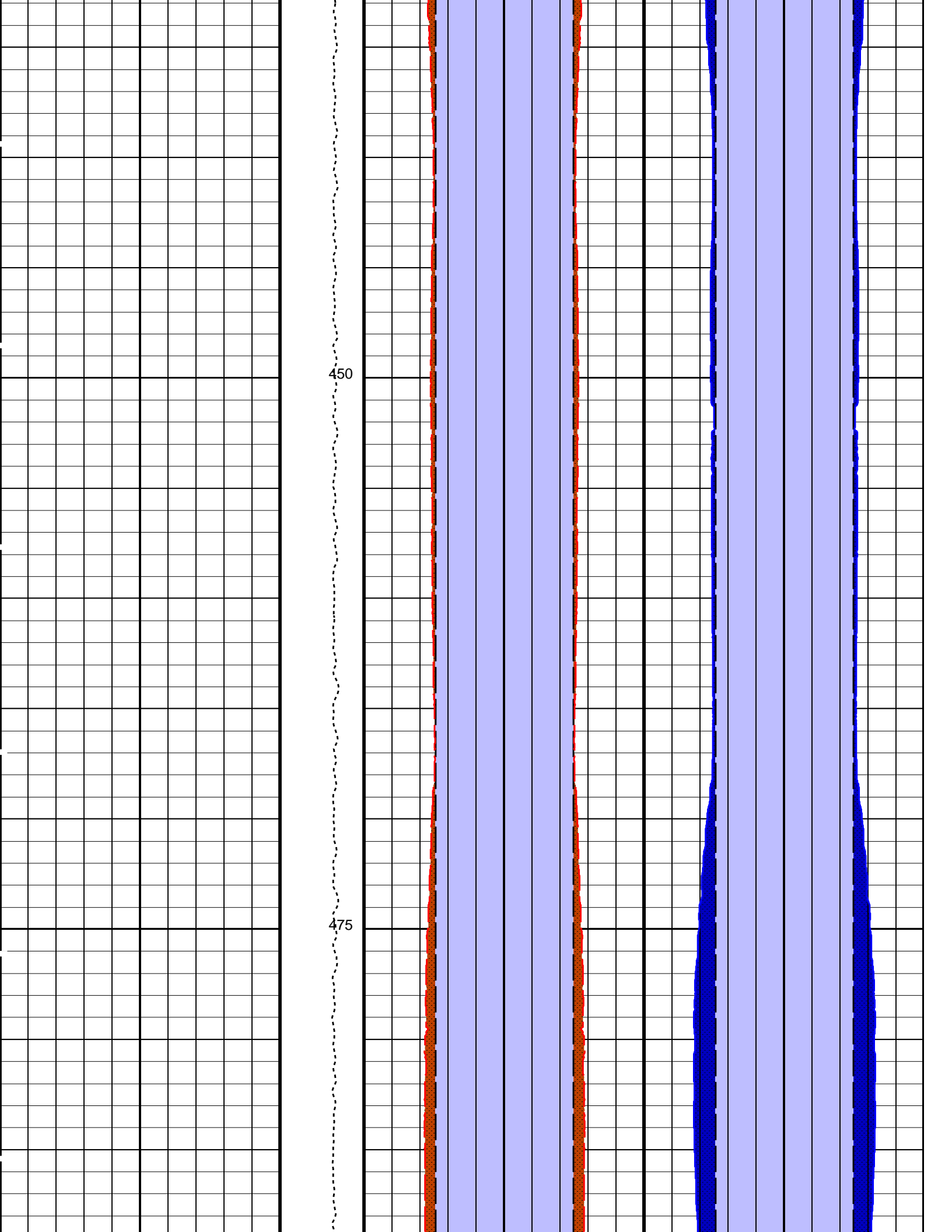


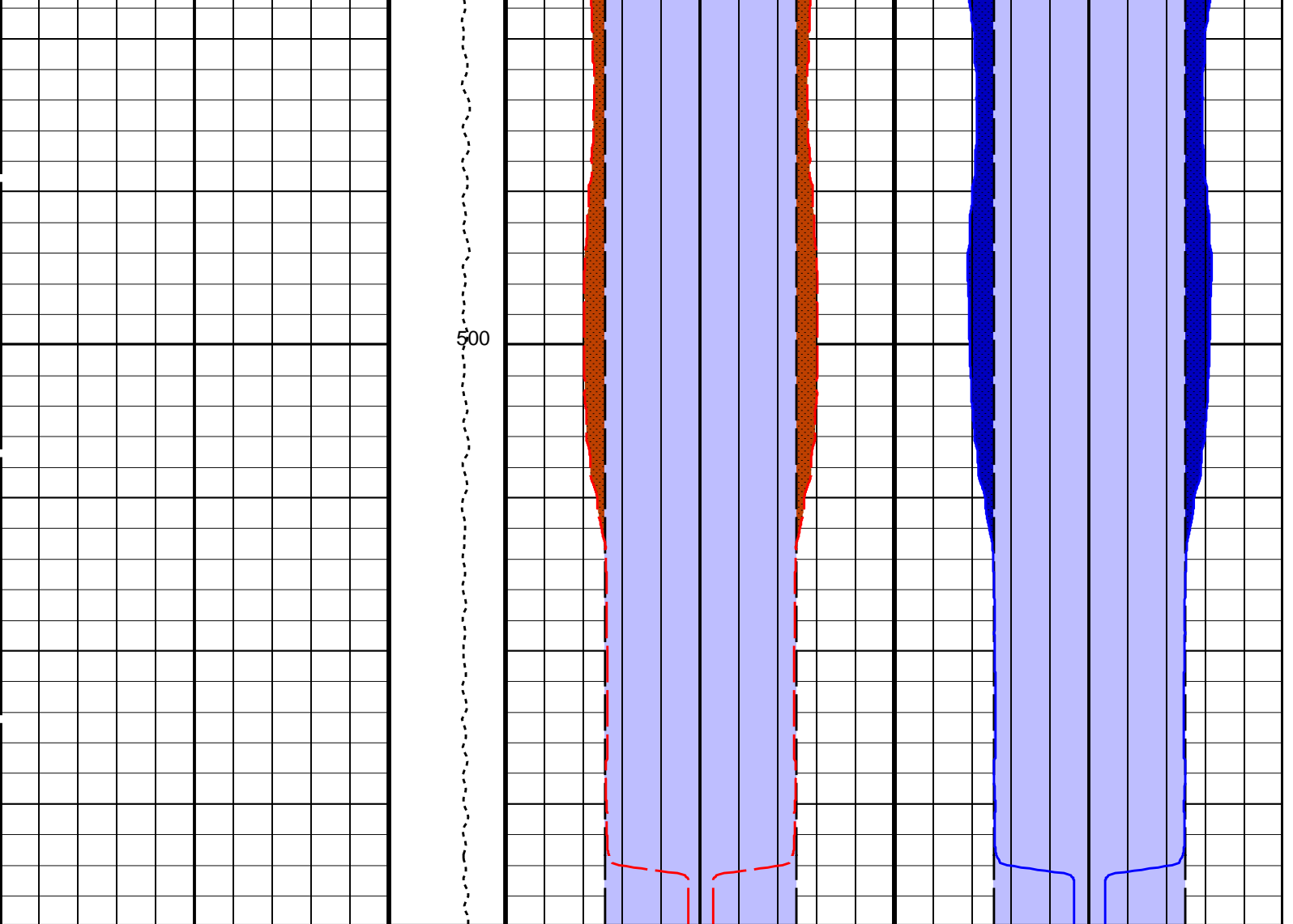












Tension (TENS) (LBF)	Bit Size (BS)		Bit Size (BS)		Bit Size (BS)		Bit Size (BS)		
	20	(IN)	0 0	(IN)	20	(IN)	0 0	(IN)	20
10000	0								
	Caliper 1 (C1)		Caliper 1 (C1)		Caliper 2 (C2)		Caliper 2 (C2)		
	20	(IN)	0 0	(IN)	20	(IN)	0 0	(IN)	20
	Area From C1 to BS		Area From BS_1 to C1_1		Area From C2 to BS_3		Area From BS_2 to C2_1		
	Area From BS to BS_1				Area From BS_3 to BS_2				

PIP SUMMARY

Time Mark Every 60 S

Parameters

DLIS Name	Description	Value
System and Miscellaneous		
BS	Bit Size	9.875 IN
DO	Depth Offset for Playback	-1570.0 M
PP	Playback Processing	NORMAL

Format: BHP Vertical Scale: 1:200 Graphics File Created: 11-Feb-2011 08:57

OP System Version: 17C0-154

Input DLIS Files

DEFAULT	FMS_DSI_NGS_038LUP	FN:67	PRODUCER	21-Jan-2011 14:05	2089.4 M	1754.9 M
---------	--------------------	-------	----------	-------------------	----------	----------

Output DLIS Files

DEFAULT	FMS_DSI_NGS_120PUP	FN:10	PRODUCER	11-Feb-2011 08:57		
---------	--------------------	-------	----------	-------------------	--	--

Company: **Lamont Doherty**

Schlumberger

Well: **Expedition 330 Site U1374A**

Field: **Louisville Seamounts**

Rig: **JOIDES Resolution**

Ocean: **Pacific**

Borehole

Profile

Natural Gamma Ray