

Processed FMS Images Depth Reference: m WMSF

* A Mark of Schlumberger

Using the following logs: FMS/DSI/GPIT/HNGS

COMPANY: Lamont-Doherty Earth Observatory
WELL: Expedition 330 Hole U1374A
FIELD: Louisville Seamounts
Rig: JOIDES Resolution
Ocean: Pacific
COUNTRY: USA
Date Logged: 11-Jan-2011 **Date Processed:**
Well Location: Latitude: S 28° 35.75'
 Longitude: W 173° 22.83'
Elevations: KB: 11m DF: 11m GL: -1570.5m
API Number: Job Number:

FOLD HERE The well name, location and borehole reference data were furnished by the customer.

All interpretations are opinions based on inferences from electrical or other measurements and we cannot, and do not guarantee the accuracy or correctness of any interpretation, and we shall not, except in the case of gross or willful negligence on our part, be liable or responsible for any loss, costs, damages or expenses incurred or sustained by anyone resulting from any interpretations made by any of our officers, agents or employees. These interpretations are also subject to Clause 4 of our General Terms and Conditions as set out in our current Price Schedule.

Field Recording:	Location: Houston	Software Version: 17C0-154	Engineer: K. Swain
------------------	-------------------	----------------------------	--------------------

Office Recording:	ICS Center:	Baseline: 4.5	Log Analyst:
-------------------	-------------	---------------	--------------

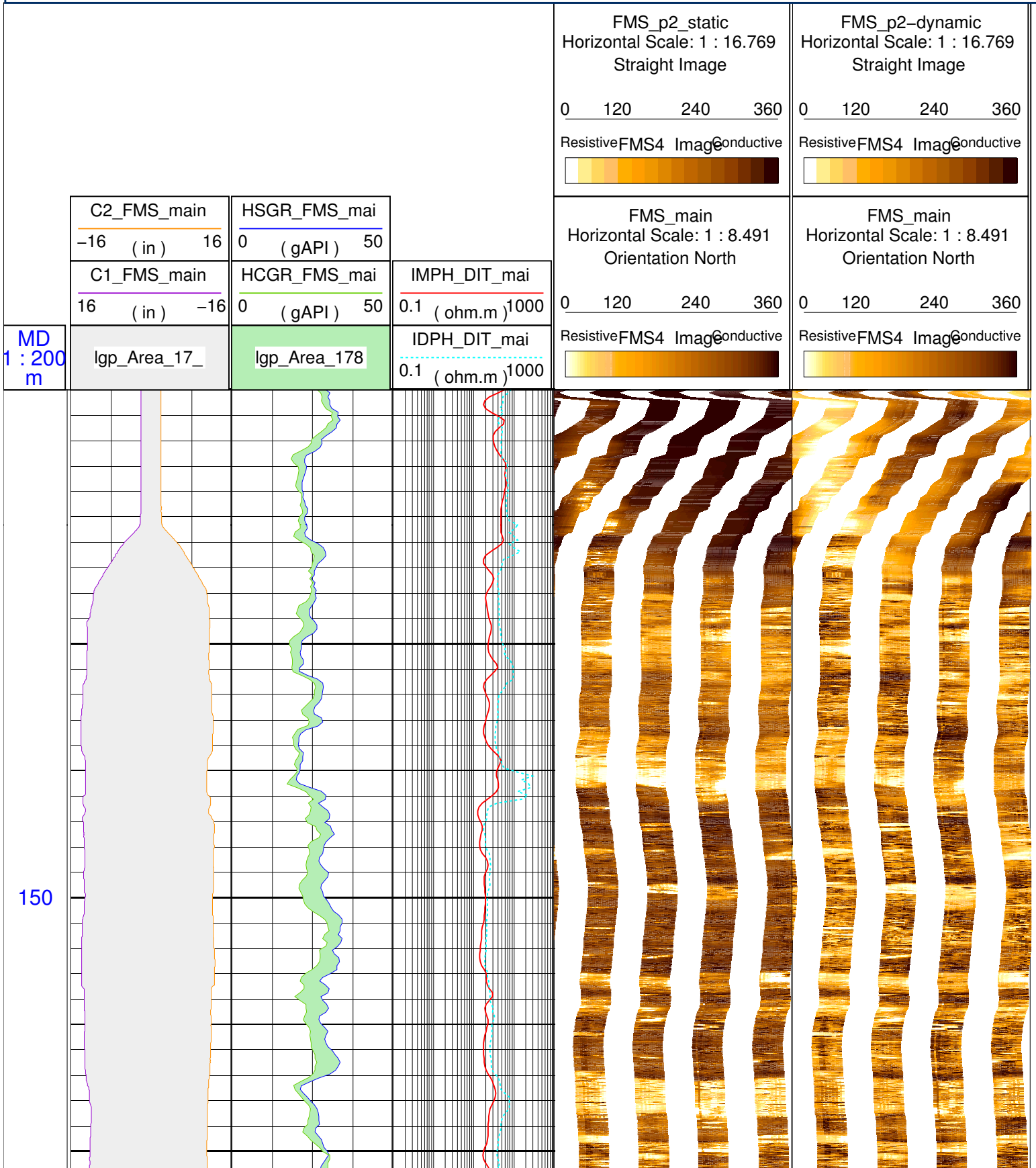
Mud and Borehole Measurements:

Rm @ Measured Temperature:	@	BHT: 10degC	Bitsize:
Rmf @ Measured Temperature:	@	Type Fluid in Hole:	Seawater
Rmc @ Measured Temperature:	@	Mud Density: 1.03g/cm3	

Remarks:

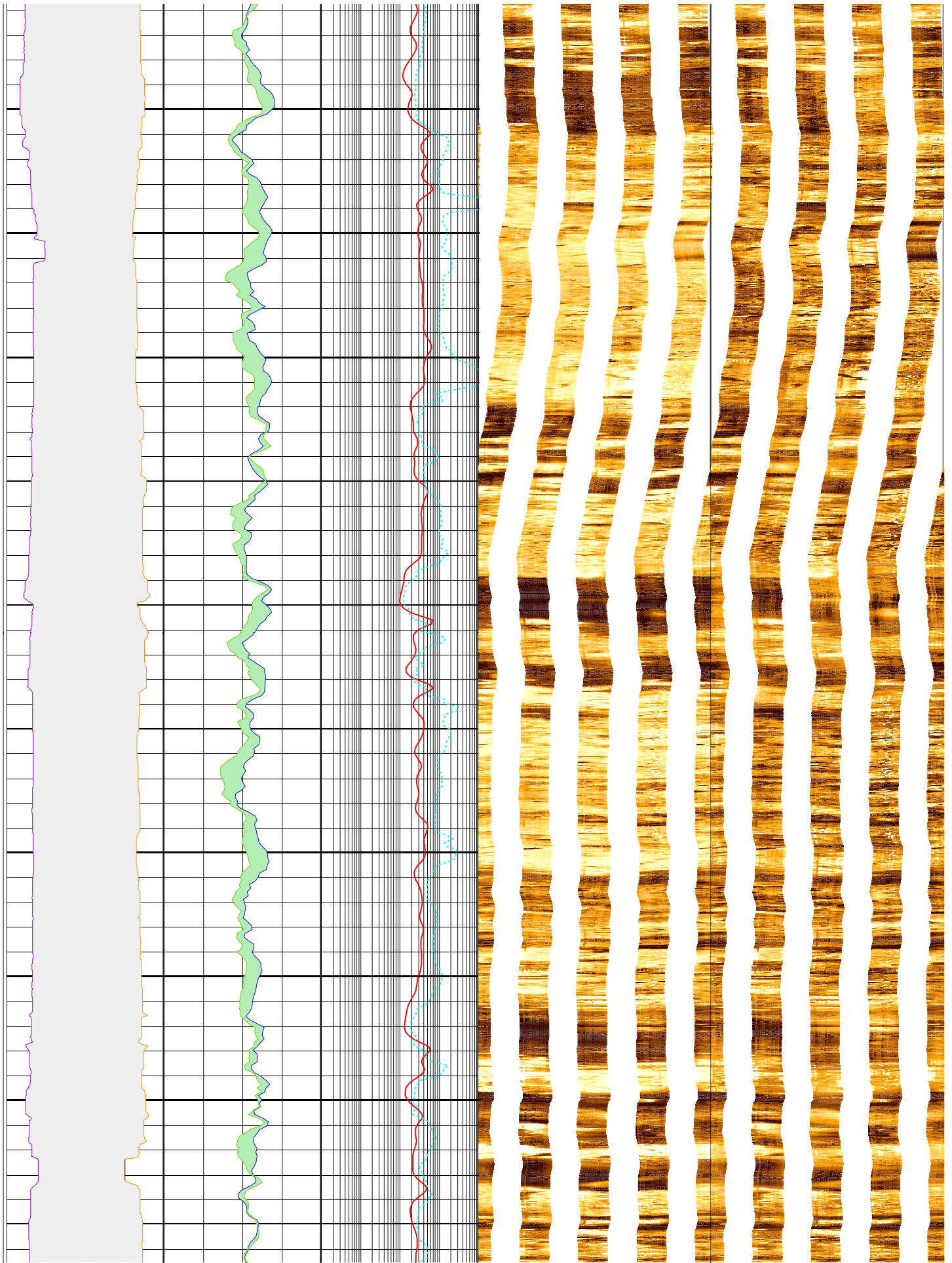
Data depth-shifted and depth-matched. Depth reference: m WMSF. Drill pipe at 127 m WMSF. Water depth at 1570.5 m WRF. Average peak-to-peak heave: 1 m. Wireline heave compensator was used during the logging operation.

Average peak-to-peak heave: 1 m. Wireline heave compensator was used during the logging operation.



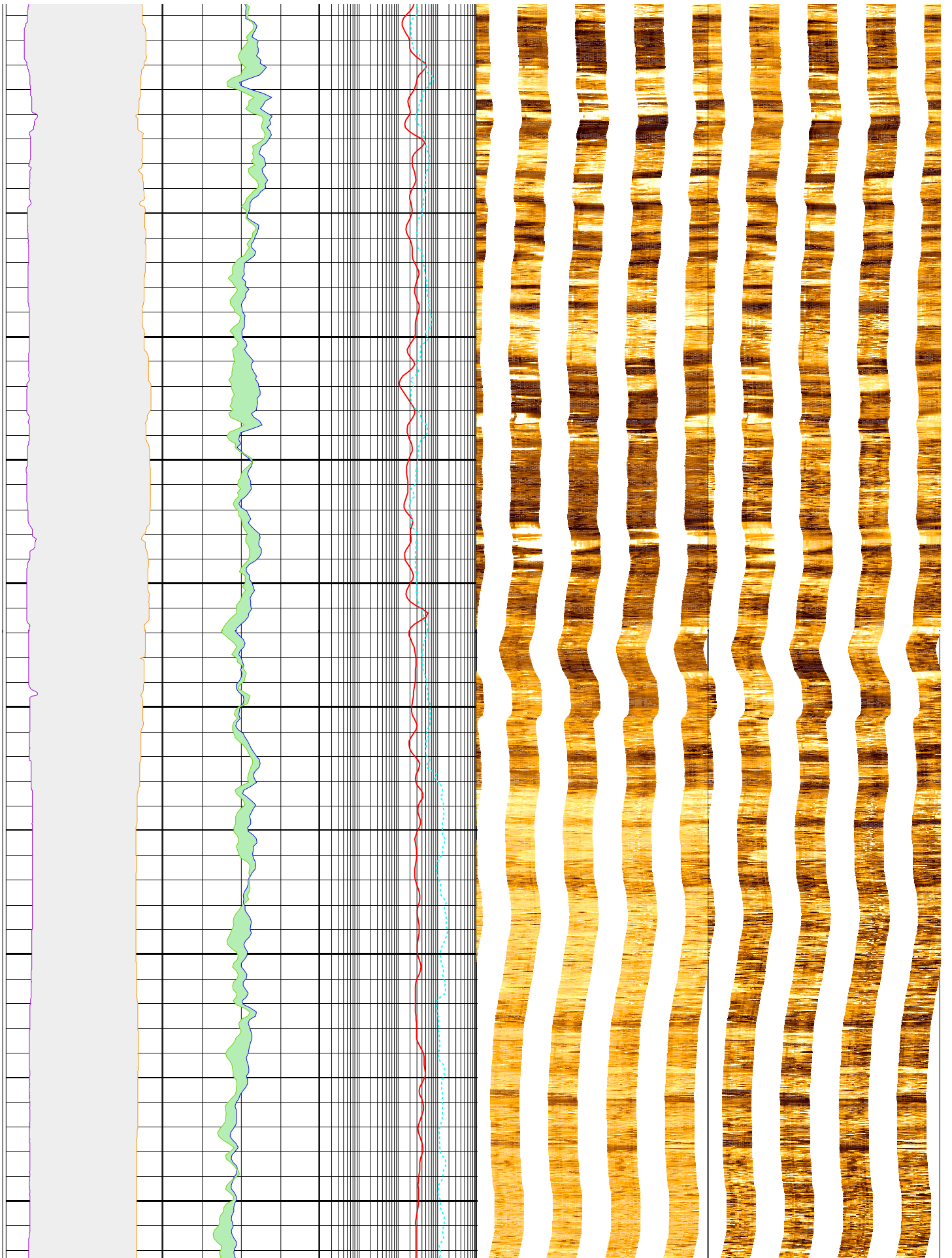
175

200



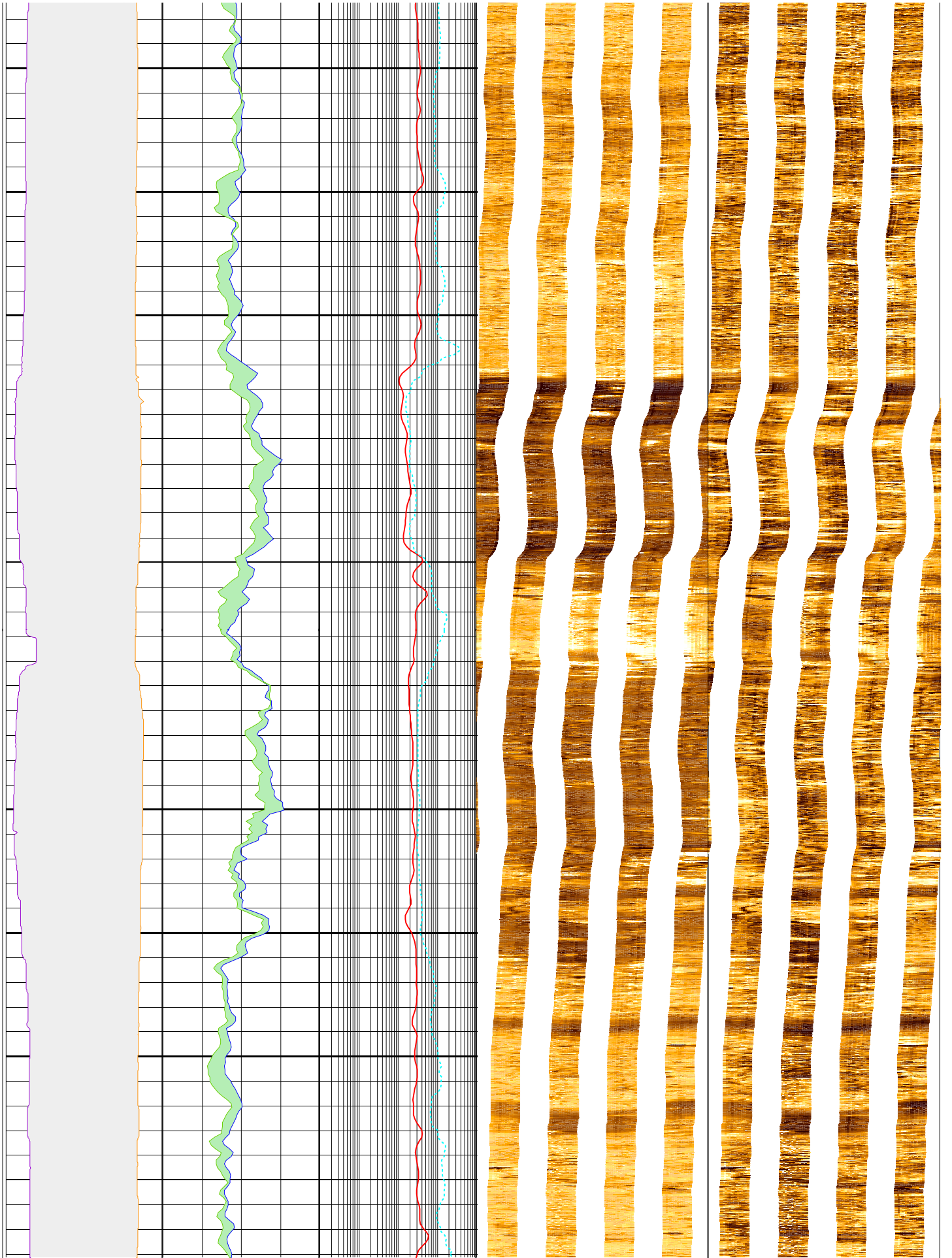
225

250



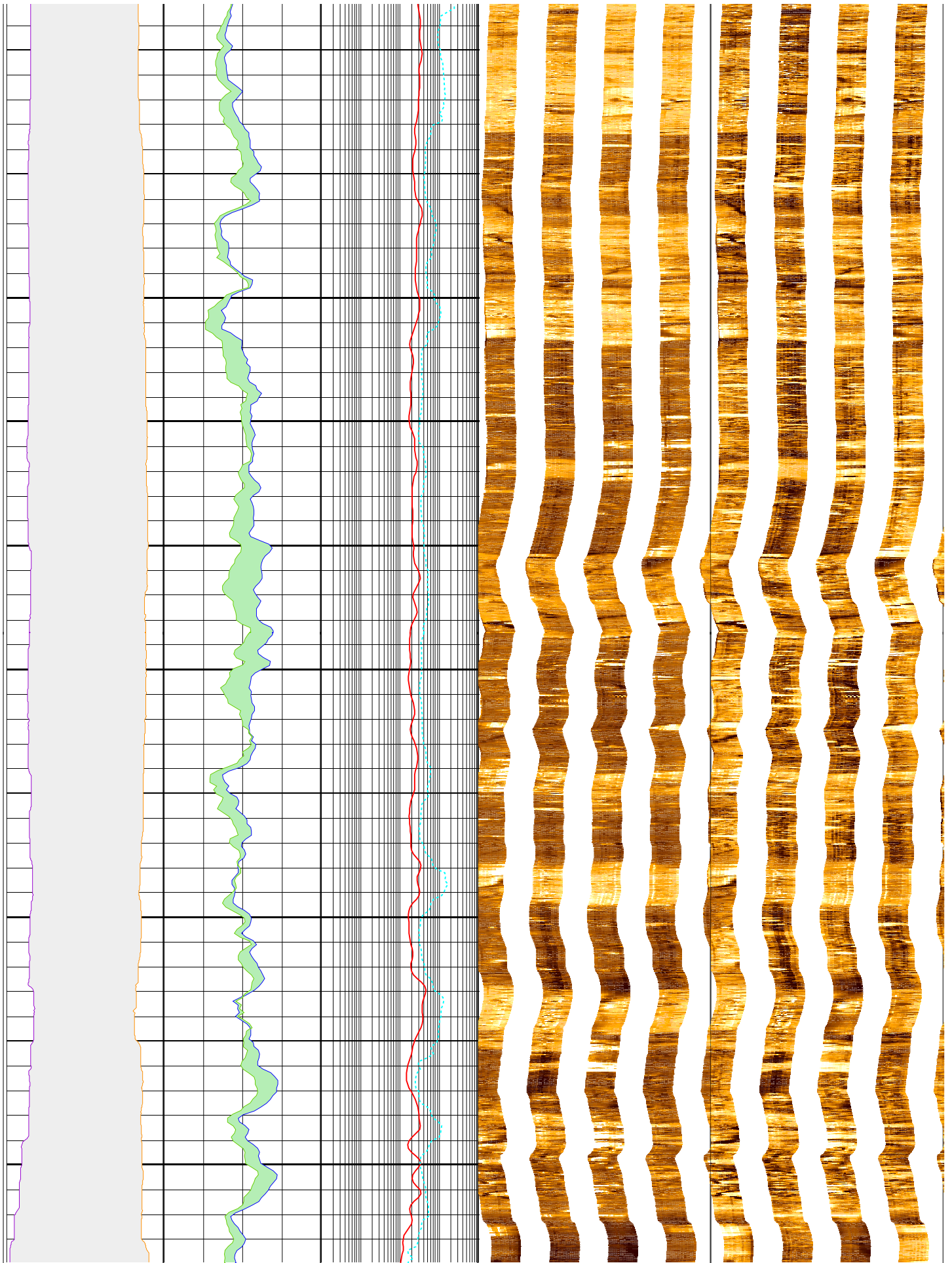
275

300



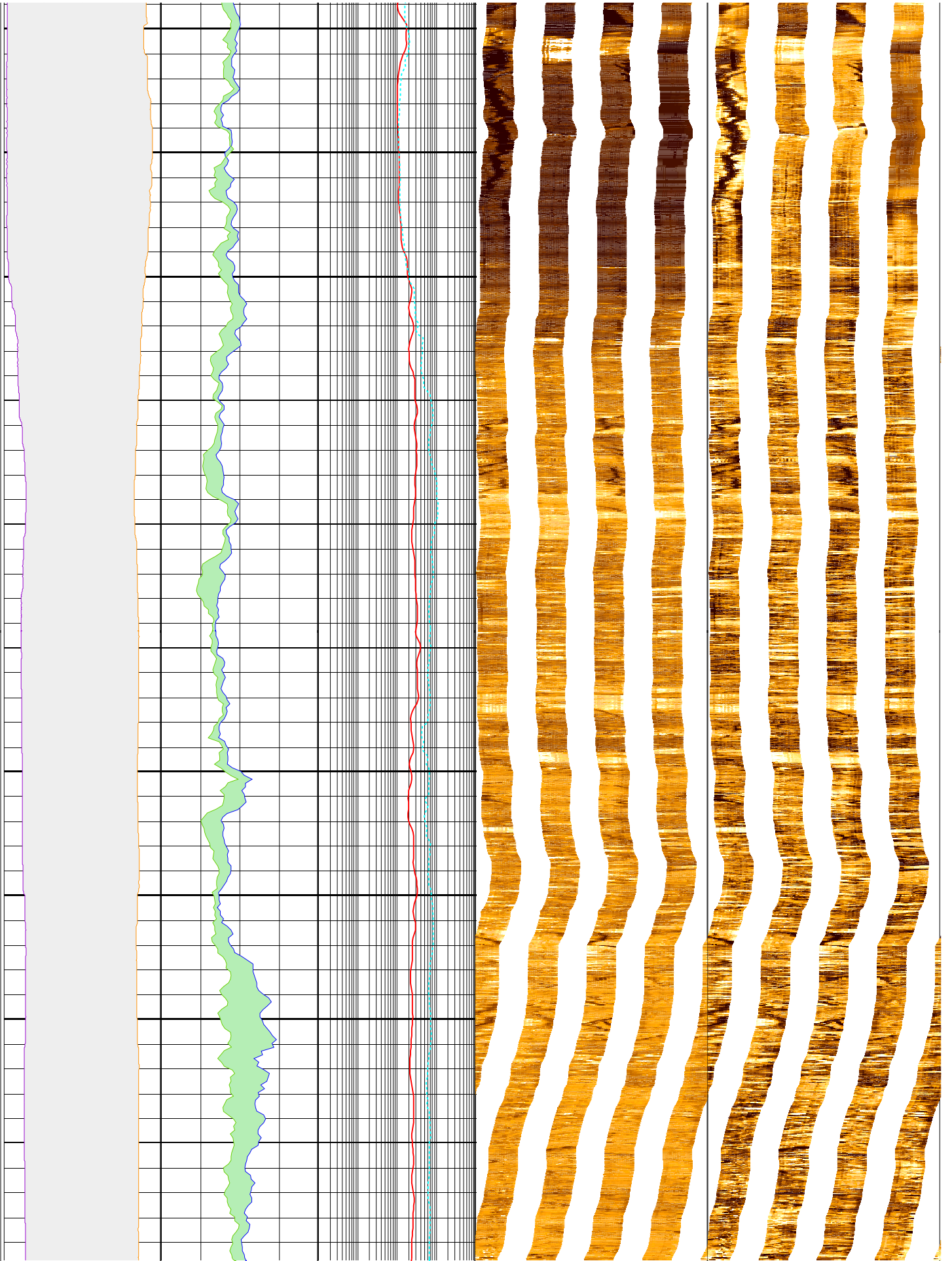
325

350



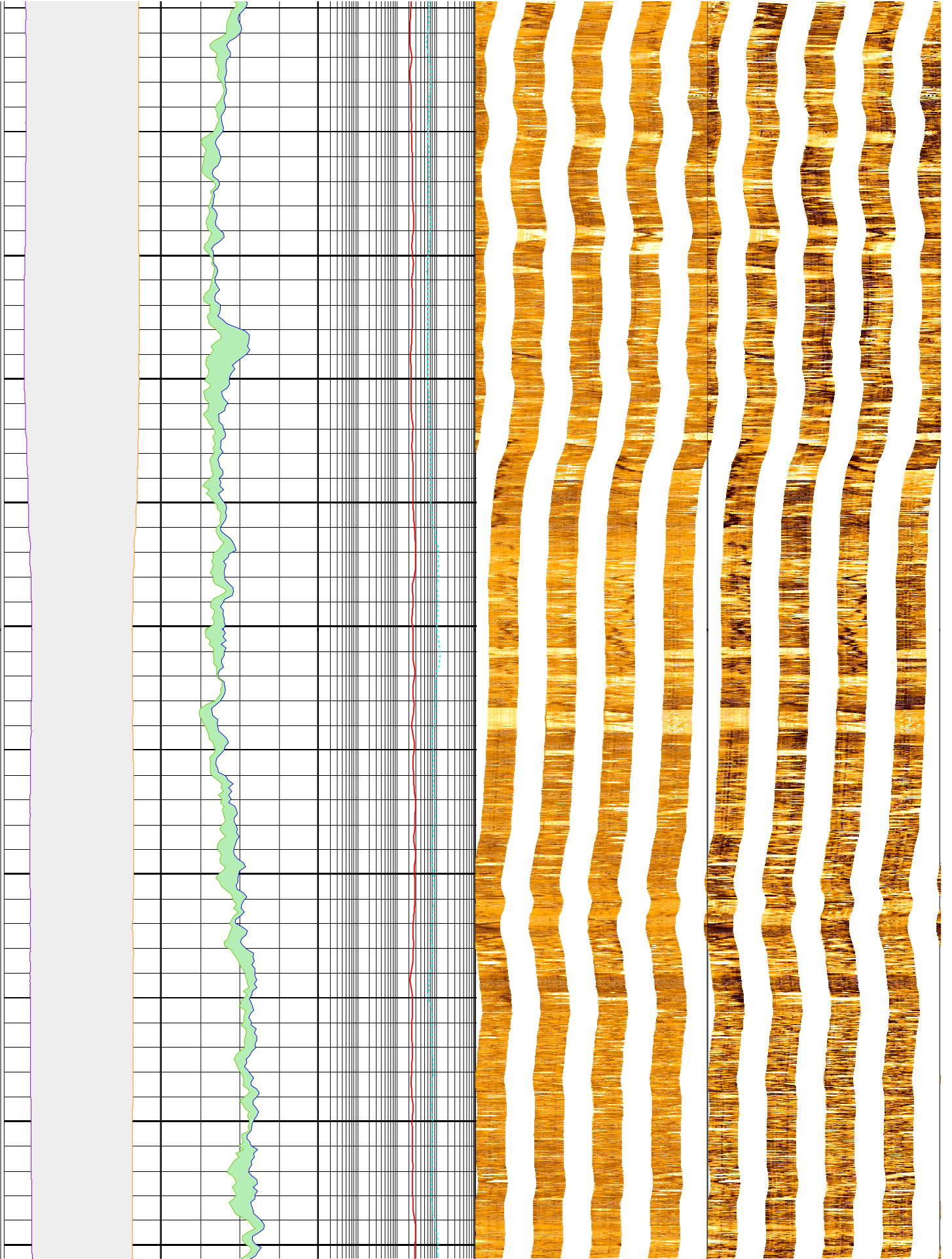
375

400



425

450



475

500

