

Schlumberger

Company: Lamont Doherty

Well: Expedition 330 Site U1376A

Field: Louisville Seamounds

Rig: JOIDES Resolution **Ocean:** Pacific

Triple Combo
DITE/HLDS/APS
Natural Gamma Ray

Latitude: S 32.2165 Deg	Elev.: K.B. -1514.00 m
Longitude: W 171.88067 Deg	G.L. 0.00 m
	D.F. -1514.00 m

Permanent Datum:	Sea Floor	Elev.: 0.00 m
Log Measured From:	Sea Floor	-1514.00 m above Perm. Datum
Drilling Measured From:	Sea Floor	

API Serial No.	Max. Hole Devi. 0 deg	Longitude W 171.88*	Latitude S 32.21 *
----------------	--------------------------	------------------------	-----------------------

Rig: JOIDES Resolution
 Field: Louisville Seamounds
 Location: Latitude: S 32.2165 Deg
 Well: Expedition 330 Site U1376A
 Company: Lamont Doherty

Logging Date		3-Feb-2011	
Run Number		1	
Depth Driller		183 m	
Schlumberger Depth		182 m	
Bottom Log Interval		179 m	
Top Log Interval		0 m	
Casing Driller Size @ Depth		4.500 in @ 80 m	
Casing Schlumberger		80 m	
Bit Size		9.875 in	
Type Fluid In Hole		Seawater	
MUD	Density	Viscosity	1.258 g/cm3
	Fluid Loss	PH	
	Source Of Sample	N/A	
RM @ Measured Temperature	@	@	
RMF @ Measured Temperature	@	@	
RMC @ Measured Temperature	@	@	
Source RMF	RMC	N/A	N/A
RM @ MRT	RMF @ MRT	@ 6	@ 6
Maximum Recorded Temperatures	6 degC		
Circulation Stopped	Time	1-Feb-2011	0:00
Logger On Bottom	Time	3-Feb-2011	1:34
Unit Number	Location	625003	Houston
Recorded By		K. Swain	
Witnessed By		L. Anderson, S. Ehmann	

	Run 1	Run 2	Run 3
Logging Date			
Run Number			
Depth Driller			
Schlumberger Depth			
Bottom Log Interval			
Top Log Interval			
Casing Driller Size @ Depth		@	
Casing Schlumberger			
Bit Size			
Type Fluid In Hole			
Density			
Viscosity			
Fluid Loss			
PH			
Source Of Sample			
RM @ Measured Temperature		@	
RMF @ Measured Temperature		@	
RMC @ Measured Temperature		@	
Source RMF			
RMC			
RM @ MRT		@	@
RMF @ MRT		@	@
Maximum Recorded Temperatures			
Circulation Stopped			
Time			
Logger On Bottom			
Time			
Unit Number			
Location			
Recorded By			
Witnessed By			

DISCLAIMER
 THE USE OF AND RELIANCE UPON THIS RECORDED-DATA BY THE HEREIN NAMED COMPANY (AND ANY OF ITS AFFILIATES, PARTNERS, REPRESENTATIVES, AGENTS, CONSULTANTS AND EMPLOYEES) IS SUBJECT TO THE TERMS AND CONDITIONS AGREED UPON BETWEEN SCHLUMBERGER AND THE COMPANY, INCLUDING: (a) RESTRICTIONS ON USE OF THE RECORDED-DATA; (b) DISCLAIMERS AND WAIVERS OF WARRANTIES AND REPRESENTATIONS REGARDING COMPANY'S USE OF AND RELIANCE UPON THE RECORDED-DATA; AND (c) CUSTOMER'S FULL AND SOLE RESPONSIBILITY FOR ANY INFERENCE DRAWN OR DECISION MADE IN CONNECTION WITH THE USE OF THIS RECORDED-DATA.

OTHER SERVICES1
 OS1: DITE/HLDS
 OS2: FMS/DSI
 OS3: HNGS
 OS4: GBM
 OS5:

OTHER SERVICES2
 OS1:
 OS2:
 OS3:
 OS4:
 OS5:

REMARKS: RUN NUMBER 1

Depths originally recorded from drill floor as main depth reference. Log files were played back with offset of -1514m to force sea floor as the new reference. This log references seafloor at 0m. Td of hole at 183m (driller), 181m (log). Tools run inside drill pipe and drill collars 9 7/8" bs. Bit released prior to logging. Active Heave Compensator used on all logs. ILE inline eccentralizer run for APS to eccentralize it against borehole. Gpit run with tool for AHC testing.

REMARKS: RUN NUMBER 2

RUN 1

SERVICE ORDER #: 17C0-154
 PROGRAM VERSION:
 FLUID LEVEL:

RUN 2

SERVICE ORDER #:
 PROGRAM VERSION:
 FLUID LEVEL:

LOGGED INTERVAL	START	STOP

LOGGED INTERVAL	START	STOP




EQUIPMENT DESCRIPTION

RUN 1

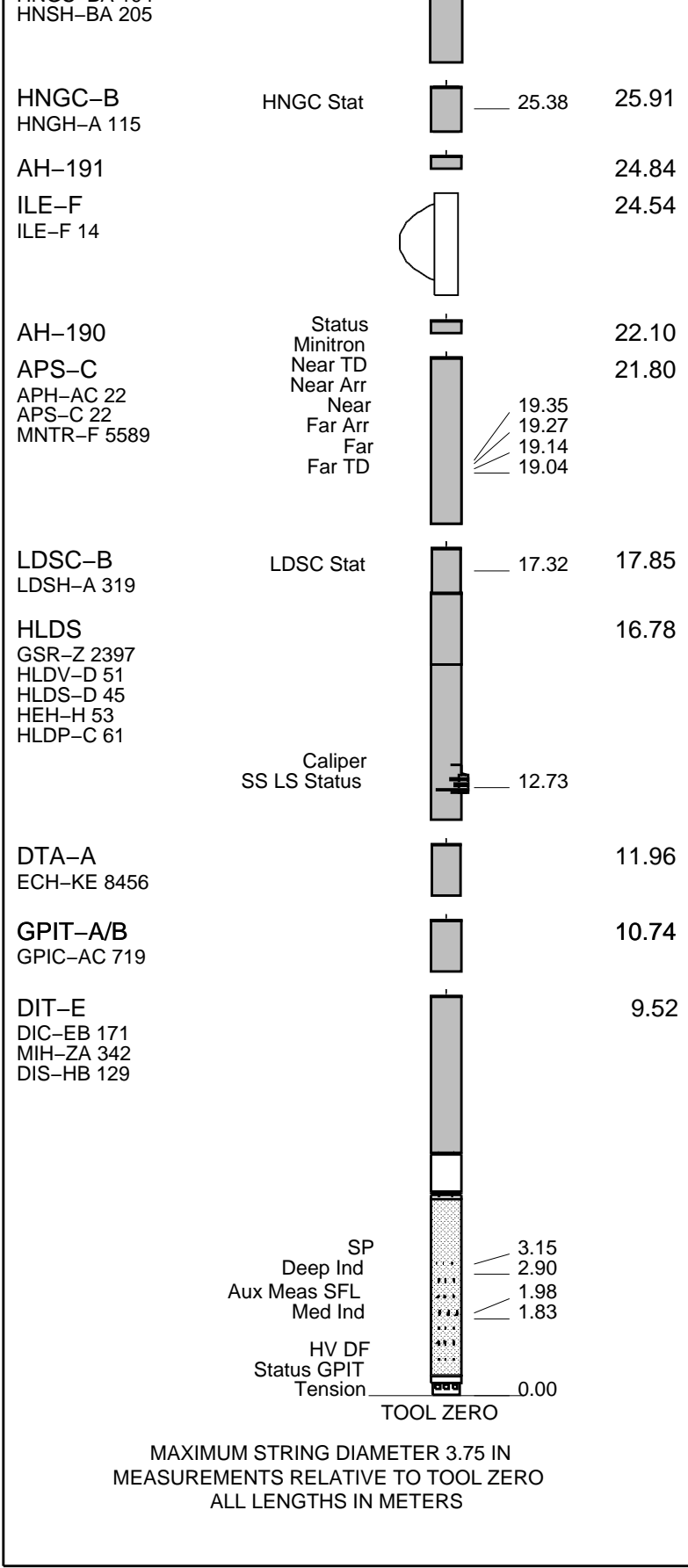
SURFACE EQUIPMENT

SFT-281 1
 SFT-178 1
 GSR-U 616008
 WITM (DTS)-A

DOWNHOLE EQUIPMENT

LEH-QT				30.21
LEH-QT 301				
DTC-H	CTEM		29.04	
ECH-KC 1777	TelStatus		29.32	
	ToolStatu		28.41	
HNGS-BA	Upper_1		27.71	28.41
HNGS-BA 194	Lower_2		27.50	

RUN 2

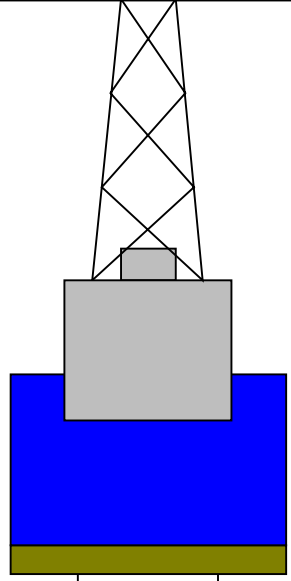


Production String	(in)	(M)	Well Schematic	(M)	(in)	Casing String
	OD	ID		MD	MD	

Kelly Bushing Elevation
Derrick Floor Elevation

Mean Sea Level

-1514
-1514
-1508



4.1



0
80
182

4.1
9.875

Sea Floor
Open Hole
Total Depth

Input DLIS Files

DEFAULT	PI_LDL_APS_NGS_035PUP	FN:51	PRODUCER	03-Feb-2011 08:57	1696.2 M	1584.8 M
---------	-----------------------	-------	----------	-------------------	----------	----------

Output DLIS Files

DEFAULT	PI_LDL_APS_NGS_045PUP	FN:3	PRODUCER	11-Feb-2011 11:04	182.9 M	70.9 M
---------	-----------------------	------	----------	-------------------	---------	--------

OP System Version: 17C0-154

DIT-E	17C0-154	GPIT-A/B	SRPC-3971-Q1_2010_OP17
DTA-A	17C0-154	HLDS	SPC-3961-OP17_NUCL
LDSC-B	SPC-3961-OP17_NUCL	APS-C	SPC-3961-OP17_NUCL
HNGC-B	SPC-3961-OP17_NUCL	HNGS-BA	SPC-3961-OP17_NUCL
DTC-H	17C0-154		

Changed Parameter Summary

DLIS Name	New Value	Previous Value	Depth & Time
ICMO	CASED_HOLE	AUTOMATIC_SELECTION	89.8 11:04:44

PIP SUMMARY

Time Mark Every 60 S

HNGS Spectroscopy Gamma Ray
(HSGR)

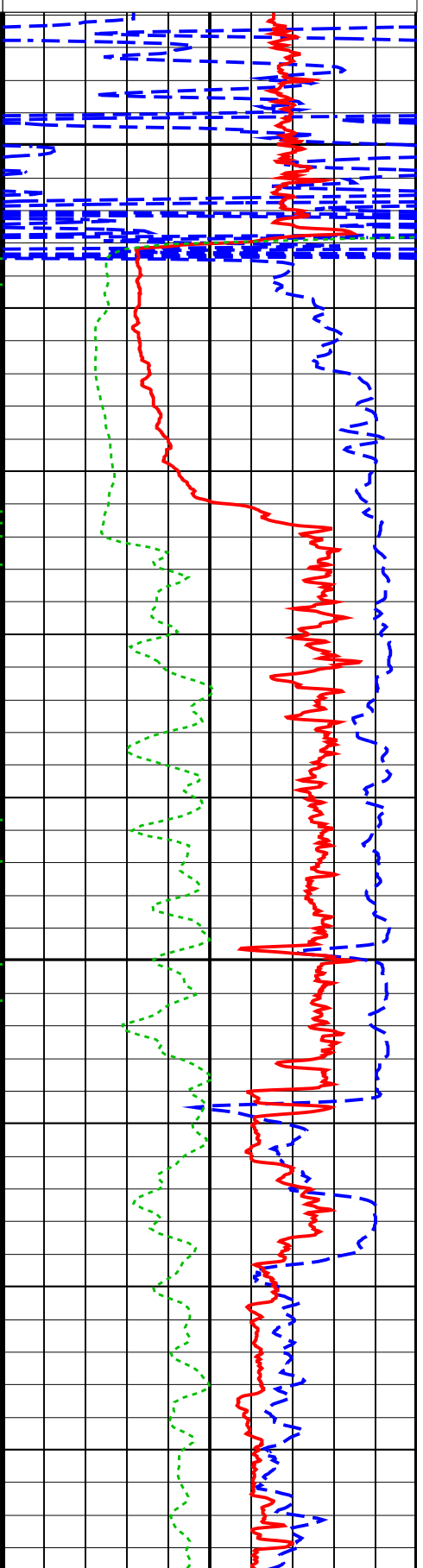
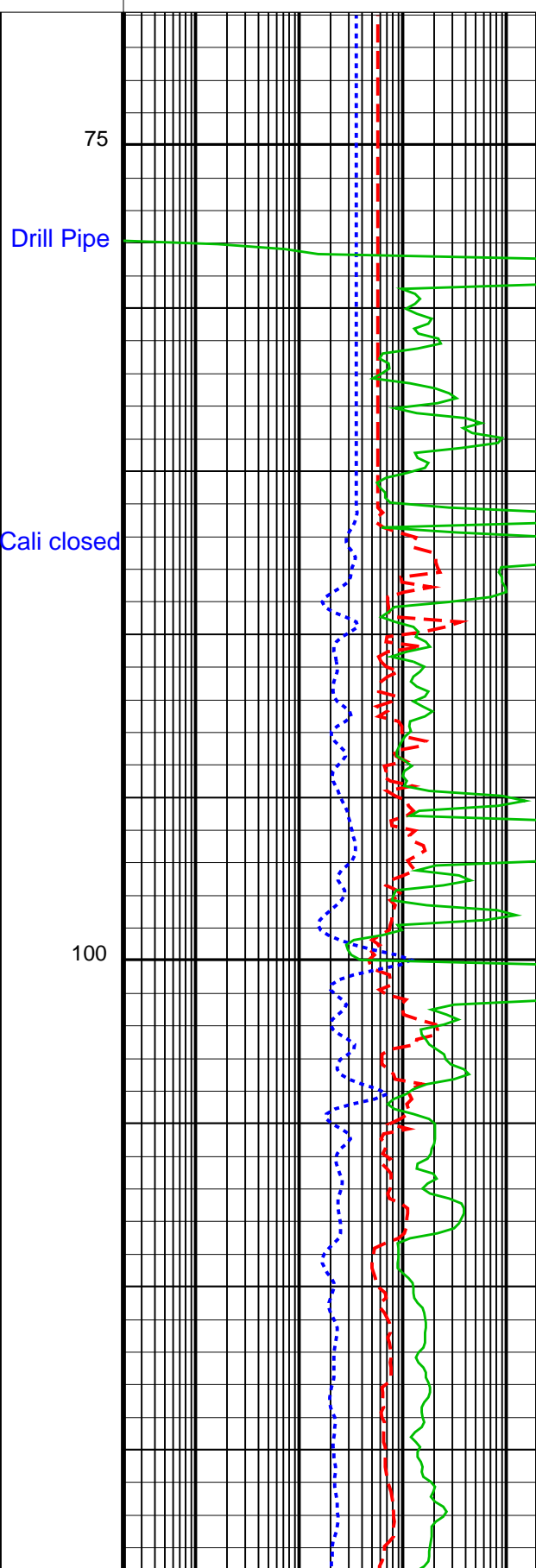
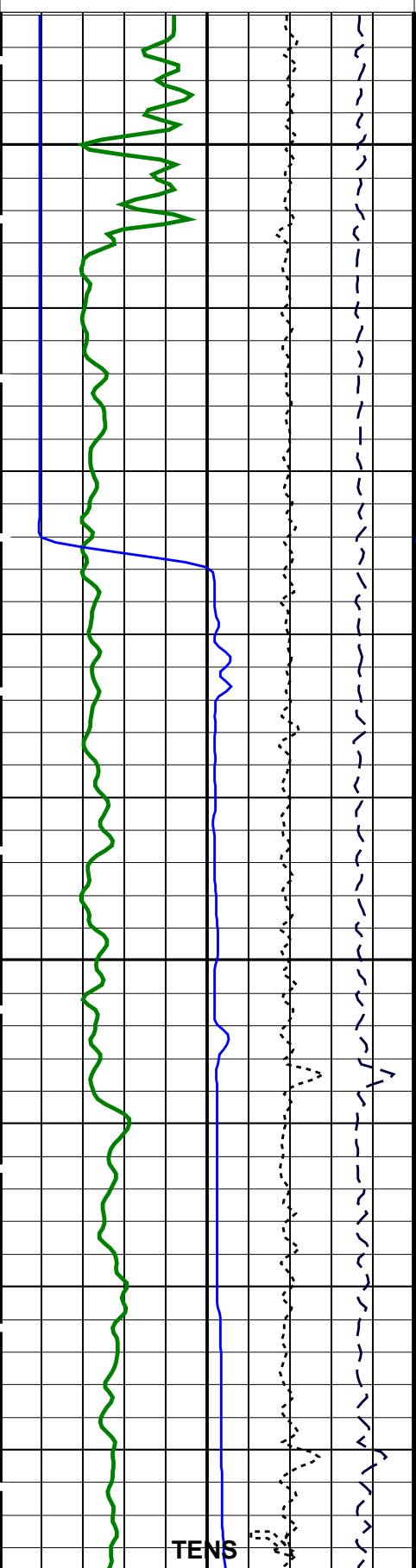
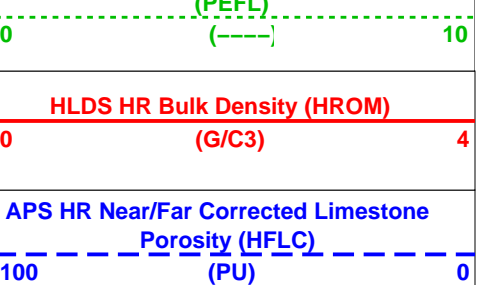
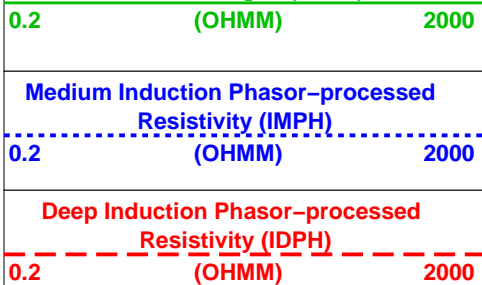
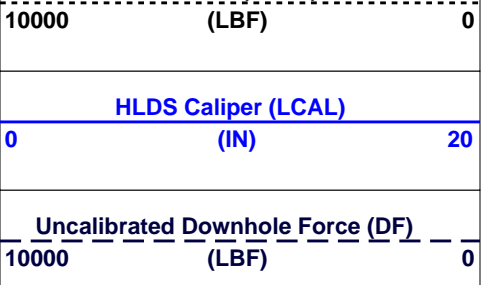
0 (GAPI) 100

UPlug 2

Tension (TENS)

SFL Unaveraged (SFLU)

HLDS Long Spaced Photoelectric Effect
(DFFL)



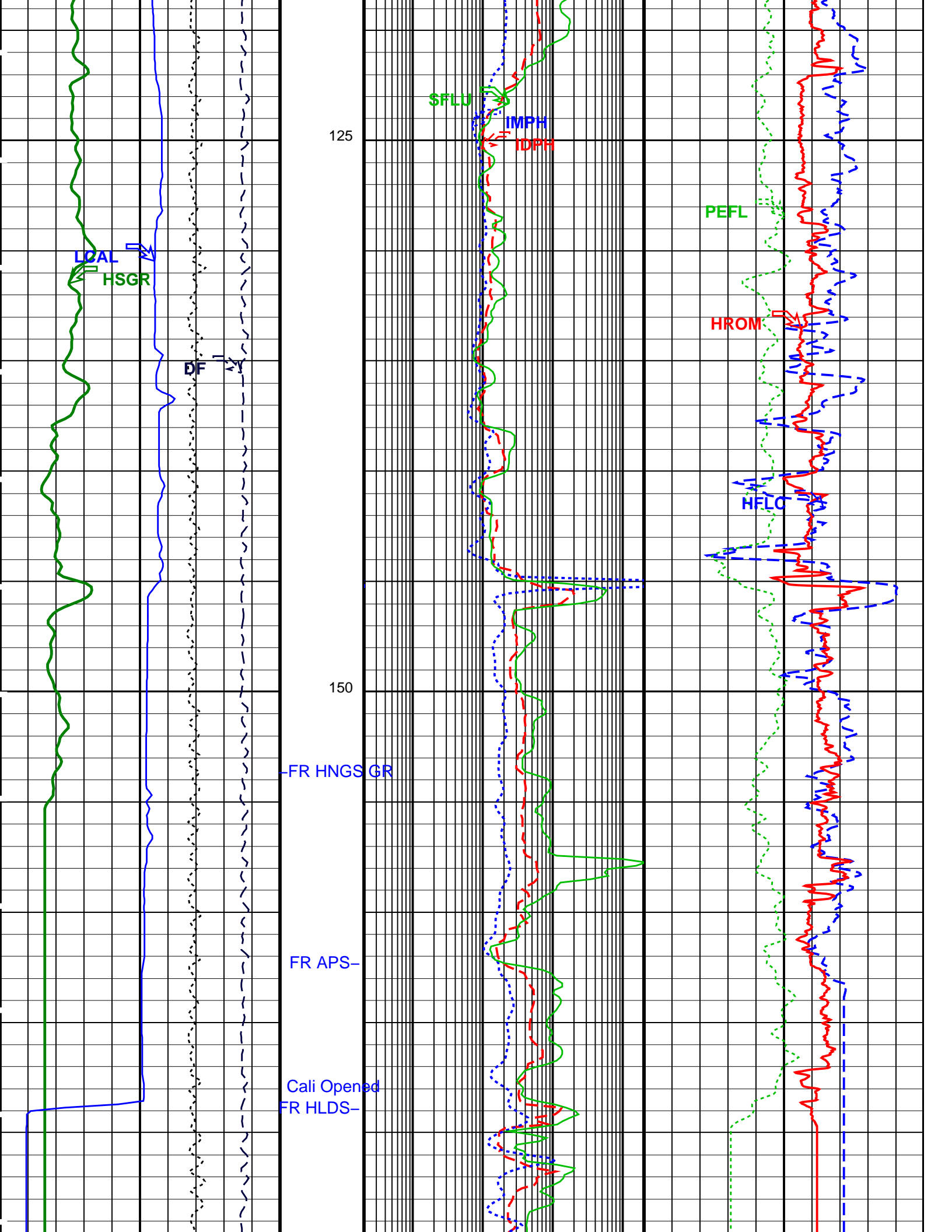
75

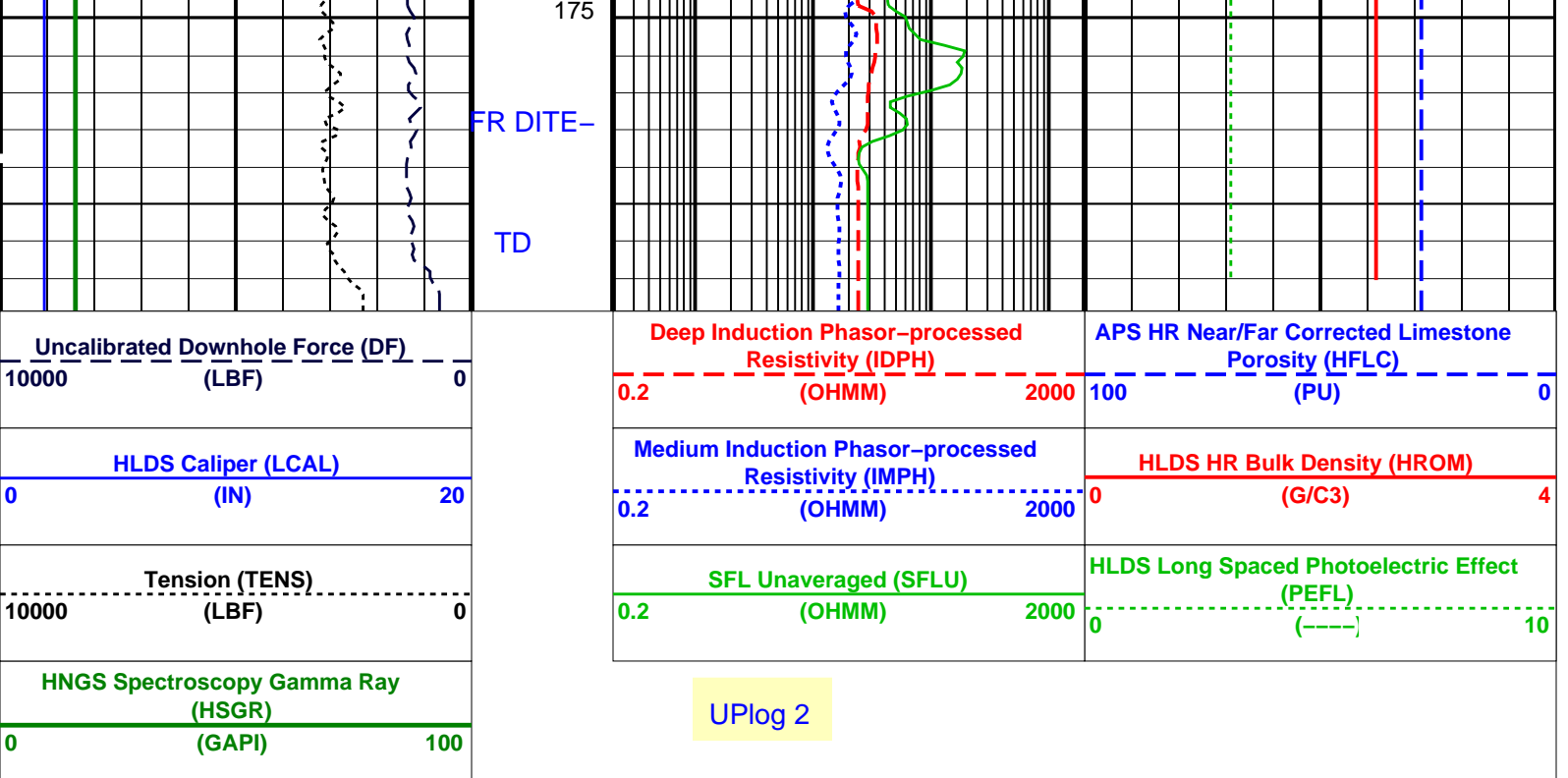
Drill Pipe

Cali closed

100

TENS





PIP SUMMARY

Time Mark Every 60 S

Parameters

DLIS Name	Description	Value
DIT-E: Dual Induction - E		
BHS	Borehole Status	OPEN
BHT	Bottom Hole Temperature (used in calculations)	43 DEG
DGF1	Deep 10 kHz Gain Factor	0.981463
DGF2	Deep 20 kHz Gain Factor	0.992515
DGF4	Deep 40 kHz Gain Factor	1.00423
DPH1	Deep 10 kHz Phase Shift	0.032855 DEG
DPH2	Deep 20 kHz Phase Shift	-0.0620342 DEG
DPH4	Deep 40 kHz Phase Shift	-1.20308 DEG
DRE1	Deep Real 10 kHz Sonde Error Correction	42.3121 MM/M
DRE2	Deep Real 20 kHz Sonde Error Correction	17.1426 MM/M
DRE4	Deep Real 40 kHz Sonde Error Correction	4.87662 MM/M
DRIM	DIT-E Radial Invasion Mode	Rxo>Rt
DSR1	Deep Sigma Reference (10 kHz)	7637 MM/M
DSR2	Deep Sigma Reference (20 kHz)	1843 MM/M
DSR4	Deep Sigma Reference (40 kHz)	405 MM/M
DSTA	DIT-E Transversal Standoff	0 IN
DXE1	Deep Quad 10 kHz Sonde Error Correction	251.392 MM/M
DXE2	Deep Quad 20 kHz Sonde Error Correction	137.206 MM/M
DXE4	Deep Quad 40 kHz Sonde Error Correction	77.8842 MM/M
GCSE	Generalized Caliper Selection	BS
GDEV	Average Angular Deviation of Borehole from Normal	0 DEG
GGRD	Geothermal Gradient	0.01 DF/F
GRSE	Generalized Mud Resistivity Selection	CHART_GEN_9
GTSE	Generalized Temperature Selection	LINEAR_ESTIMATE
IFRS	DIT-E Induction Frequency Selector	20
IPHA	DIT-E Phasor Processing Mode	ALL
IPRO	DIT-E Induction Processing Selector	PHASOR
ISSBAR	Barite Mud Switch	BARITE
ITEN	DIT-E Temperature Enable	ENABLE
MATR	Rock Matrix for Neutron Porosity Corrections	LIMESTONE
MGF1	Medium 10 kHz Gain Factor	0.99033
MGF2	Medium 20 kHz Gain Factor	0.995142
MGF4	Medium 40 kHz Gain Factor	1.01918
MPH1	Medium 10 kHz Phase Shift	-0.27707 DEG
MPH2	Medium 20 kHz Phase Shift	-0.890816 DEG
MPH4	Medium 40 kHz Phase Shift	-2.23551 DEG
MRE1	Medium Real 10 kHz Sonde Error Correction	32.7618 MM/M
MRE2	Medium Real 20 kHz Sonde Error Correction	10.896 MM/M
MRE4	Medium Real 40 kHz Sonde Error Correction	1.11433 MM/M
MSR1	Medium Sigma Reference (10 kHz)	13520 MM/M
MSR2	Medium Sigma Reference (20 kHz)	3250 MM/M
MSR4	Medium Sigma Reference (40 kHz)	685 MM/M
MXE1	Medium Quad 10 kHz Sonde Error Correction	336.356 MM/M

MXE2	Medium Quad 20 kHz Sonde Error Correction	177.452	MM/M
MXE4	Medium Quad 40 kHz Sonde Error Correction	115.531	MM/M
SBR	Shoulder Bed Resistivity Factor	1	OHMM
SFCR	SFL Channel Ratio	1000	
SFLE	SFL Enable	ENABLE	
SHT	Surface Hole Temperature	68	DEGF
SPAE	DIT-E SPARC Processing Enable	ENABLE	
SPNV	SP Next Value	0	MV
GPIT-A/B: General Purpose Inclinerometer			
ACPP	Accelerometer PROM Presence	PRESENT	
AFMO	Accelerometer Filtering Mode	MOVING_AVERAGE	
ART	Accelerometer Reference Temperature	20	DEGC
GLM	GPIT Logging Mode	DIPM	
ICMO	Inclinometry Computation Mode	AUTOMATIC_SELECTION	
MAPP	Magnetometer PROM Presence	PRESENT	
MDEC	Magnetic Field Declination	17.9362	DEG
MRTE	Magneto Reference Temperature	23	DEGC
TEMS	GPIT Temperature Sensor Used	BOTH	
U-GPOF	Playback OLD VERSION GPIT FILE (BEFORE OP14 + SRPC-3098-FEB_2006_C) ?	NO	
HLDS: Hostile Litho-Density Sonde			
CLCL	HLDS LS Control Loop Controller Mode	AUTO_DEFAULT	
CLCS	HLDS SS Control Loop Controller Mode	AUTO_DEFAULT	
CLLS	HLDS Mode Loop Long Spacing	AUTO	
CLSS	HLDS Mode Loop Short Spacing	AUTO	
DHC	Density Hole Correction	BS	
DPPM	Density Porosity Processing Mode	HIRS	
FD	Fluid Density	1	G/C3
LATC	HLDS Activation Correction	ON	
LLDL	HLDS LS Low Level Discriminator DAC	14000	
LLDS	HLDS SS Low Level Discriminator DAC	14000	
LLML	HLDS LS Low Level Discriminator Mode	AUTO	
LLMS	HLDS SS Low Level Discriminator Mode	AUTO	
MDEN	Matrix Density	2.71	G/C3
PHVL	HLDS Long Spacing High Voltage Setting	1000	V
PHVS	HLDS Short Spacing High Voltage Setting	1000	V
PSDL	HLDS LS Pulse Shape Compensation DAC	30000	
PSDS	HLDS SS Pulse Shape Compensation DAC	30000	
PSML	HLDS LS Pulse Shape Compensation Mode	AUTO	
PSMS	HLDS SS Pulse Shape Compensation Mode	AUTO	
APS-C: Accelerator-Porosity Tool			
	APS Software Version	0	
AASD	APS Thermal and Array Detectors High Voltage Setting	1968.14	V
ADSO	APS Array Detectors Data Source Switch	Both	
AFSD	APS Far Detector High Voltage Setting	2080.2	V
AHCS	APS Holesize Correction Source	BS	
AHSS	APS Holesize Correction Switch	ON	
AMTY	APS Environmental Corrections Mud Type	WaterBaseBarite	
ANSD	APS Near Detector High Voltage Setting	1733.87	V
ASOS	APS Standoff Correction Switch	ON	
ATSS	APS Temperature-Pressure-Salinity Correction Switch	ON	
BHFL_APS	APS TNPH Borehole Fluid Type	WATER	
BHS	Borehole Status	OPEN	
BHT	Bottom Hole Temperature (used in calculations)	43	DEGF
BSCO_APS	APS TNPH Borehole Salinity Correction Option	YES	
DPPM	Density Porosity Processing Mode	HIRS	
DSCO_APS	APS TNPH Density Source Correction Option	COMPUTED	
FSAL	Formation Salinity	-50000	PPM
FSCO_APS	APS TNPH Formation Salinity Correction Option	NO	
GCSE	Generalized Caliper Selection	BS	
GDEV	Average Angular Deviation of Borehole from Normal	0	DEG
GGRD	Geothermal Gradient	0.01	DF/F
GRSE	Generalized Mud Resistivity Selection	CHART_GEN_9	
GTSE	Generalized Temperature Selection	LINEAR_ESTIMATE	
HSCO_APS	APS TNPH Hole Size Correction Option	YES	
ISSBAR	Barite Mud Switch	BARITE	
MATR	Rock Matrix for Neutron Porosity Corrections	LIMESTONE	
MCCO_APS	APS TNPH Mud Cake Correction Option	YES	
MCOR_APS	APS TNPH Mud Correction	NATU	
MWCO_APS	APS TNPH Mud Weight Correction Option	YES	
NARC	APS Near/Array Calibration Ratio	1.06008	
NFRC	APS Near/Far Calibration Ratio	0.890428	
PTCO_APS	APS TNPH Pressure/Temperature Correction Option	YES	
SHT	Surface Hole Temperature	68	DEGF
TNCO_APS	APS TNPH Computation Option	YES	
HNGS-BA: Hostile Natural Gamma Ray Sonde			
BAR1	HNGS Detector 1 Barite Constant	1	
BAR2	HNGS Detector 2 Barite Constant	1	
BHK	HNGS Borehole Potassium Correction Concentration	0	
BHS	Borehole Status	OPEN	
BHT	Bottom Hole Temperature (used in calculations)	43	DEGF
CSD1	Inner Casing Outer Diameter	0	IN
CSD2	Outer Casing Outer Diameter	0	IN
CSW1	Inner Casing Weight	0	LB/F
CSW2	Outer Casing Weight	0	LB/F

DBCC	Current Casing Weight	NONE	
GCSE	Generalized Caliper Selection	BS	
GDEV	Average Angular Deviation of Borehole from Normal	0	DEG
GGRD	Geothermal Gradient	0.01	DF/F
GRSE	Generalized Mud Resistivity Selection	CHART_GEN_9	
GTSE	Generalized Temperature Selection	LINEAR_ESTIMATE	
H1P	HNGS Detector 1 Allow/Disallow In Processing	ALLOW	
H2P	HNGS Detector 2 Allow/Disallow In Processing	ALLOW	
HABK	HNGS Borehole Potassium Running Average	-0.00533577	
HALF	HNGS Alpha Filter Length	60	IN
HCRB	HNGS Apply Borehole Potassium Correction	NONE	
HMWM	Mud Weighting Material	NATU	
HNPE	HNGS Processing Enable	YES	
ISSBAR	Barite Mud Switch	BARITE	
MATR	Rock Matrix for Neutron Porosity Corrections	LIMESTONE	
S1BI	HNGS Detector 1 Calibration Bismuth Count Rate	1.3	CPS
S2BI	HNGS Detector 2 Calibration Bismuth Count Rate	1.3	CPS
SGRC	HNGS Standard Gamma-Ray Correction Flag	YES	
SHT	Surface Hole Temperature	68	DEGF
TPOS	Tool Position	ECCE	
VBA1	HNGS Detector 1 Variable Barite Factor Running Average	0.615824	
VBA2	HNGS Detector 2 Variable Barite Factor Running Average	1.20133	

System and Miscellaneous

ALTDPCCHAN	Name of alternate depth channel	SpeedCorrectedDepth	
BS	Bit Size	9.875	IN
BSAL	Borehole Salinity	-50000.00	PPM
CSIZ	Current Casing Size	4.500	IN
CWEI	Casing Weight	0.00	LB/F
DFD	Drilling Fluid Density	1.26	G/C3
DO	Depth Offset for Playback	-1514.0	M
FLEV	Fluid Level	-50000.00	M
MST	Mud Sample Temperature	-50000.00	DEGC
PBVSADP	Use alternate depth channel for playback	NO	
PP	Playback Processing	NORMAL	
RMFS	Resistivity of Mud Filtrate Sample	-50000.0000	OHMM
RW	Resistivity of Connate Water	1.0000	OHMM
TD	Total Depth	600	FT
TDD	Total Depth - Driller	183.00	M
TDL	Total Depth - Logger	182.00	M
TWS	Temperature of Connate Water Sample	15.00	DEGC

Format: TripleCombo Vertical Scale: 1:200 Graphics File Created: 11-Feb-2011 11:04

OP System Version: 17C0-154

DIT-E	17C0-154	GPIT-A/B	SRPC-3971-Q1_2010_OP17
DTA-A	17C0-154	HLDS	SPC-3961-OP17_NUCL
LDSC-B	SPC-3961-OP17_NUCL	APS-C	SPC-3961-OP17_NUCL
HNGC-B	SPC-3961-OP17_NUCL	HNGS-BA	SPC-3961-OP17_NUCL
DTC-H	17C0-154		

Input DLIS Files

DEFAULT	PI_LDL_APS_NGS_035PUP	FN:51	PRODUCER	03-Feb-2011 08:57	1696.2 M	1584.8 M
---------	-----------------------	-------	----------	-------------------	----------	----------

Output DLIS Files

DEFAULT	PI_LDL_APS_NGS_045PUP	FN:3	PRODUCER	11-Feb-2011 11:04		
---------	-----------------------	------	----------	-------------------	--	--

Input DLIS Files

DEFAULT	PI_LDL_APS_NGS_034PUP	FN:50	PRODUCER	03-Feb-2011 08:52	1696.2 M	1502.5 M
---------	-----------------------	-------	----------	-------------------	----------	----------

Output DLIS Files

DEFAULT	PI_LDL_APS_NGS_044PUP	FN:2	PRODUCER	11-Feb-2011 10:53	182.9 M	-11.4 M
---------	-----------------------	------	----------	-------------------	---------	---------

OP System Version: 17C0-154

DIT-E	17C0-154	GPIT-A/B	SRPC-3971-Q1_2010_OP17
DTA-A	17C0-154	HLDS	SPC-3961-OP17_NUCL
LDSC-B	SPC-3961-OP17_NUCL	APS-C	SPC-3961-OP17_NUCL
HNGC-B	SPC-3961-OP17_NUCL	HNGS-BA	SPC-3961-OP17_NUCL
DTC-H	17C0-154		

Changed Parameter Summary

DLIS Name

New Value

Previous Value

Depth & Time

ICMO

CASED_HOLE

AUTOMATIC_SELECTION

89.8 10:54:10

PIP SUMMARY

Time Mark Every 60 S

HNGS Spectroscopy Gamma Ray (HSGR)		
0	(GAPI)	100

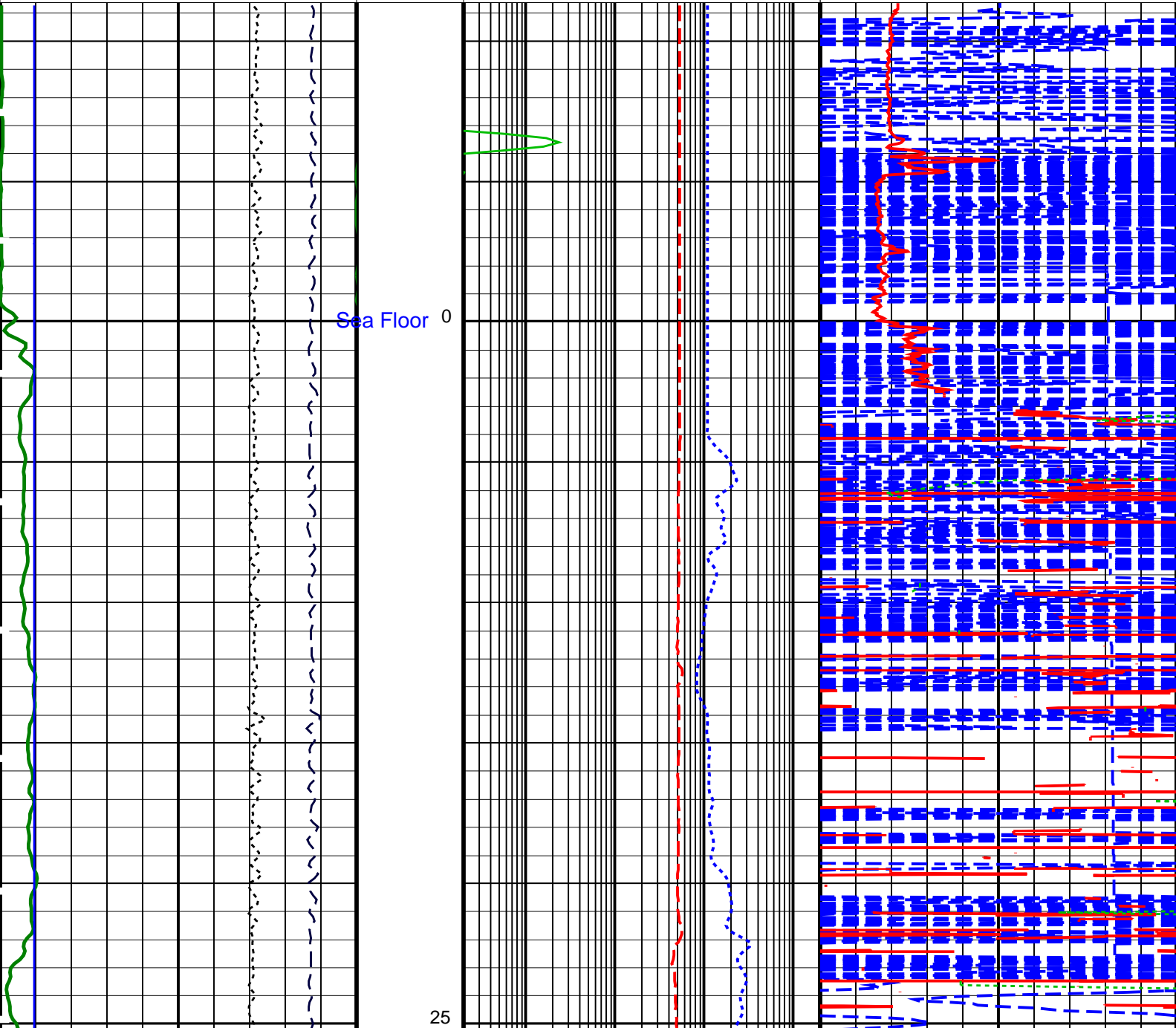
Tension (TENS)		
10000	(LBF)	0

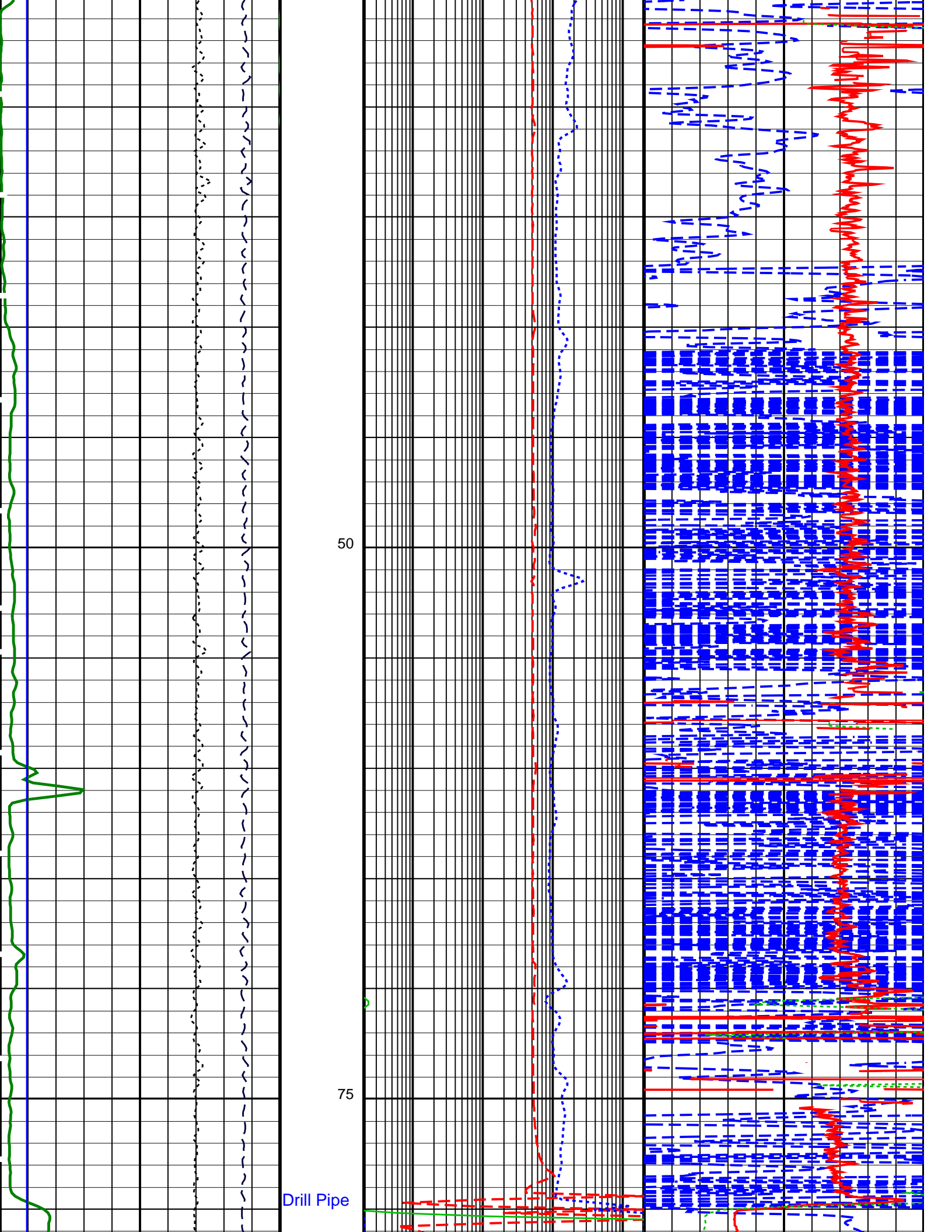
HLDS Caliper (LCAL)		
0	(IN)	20

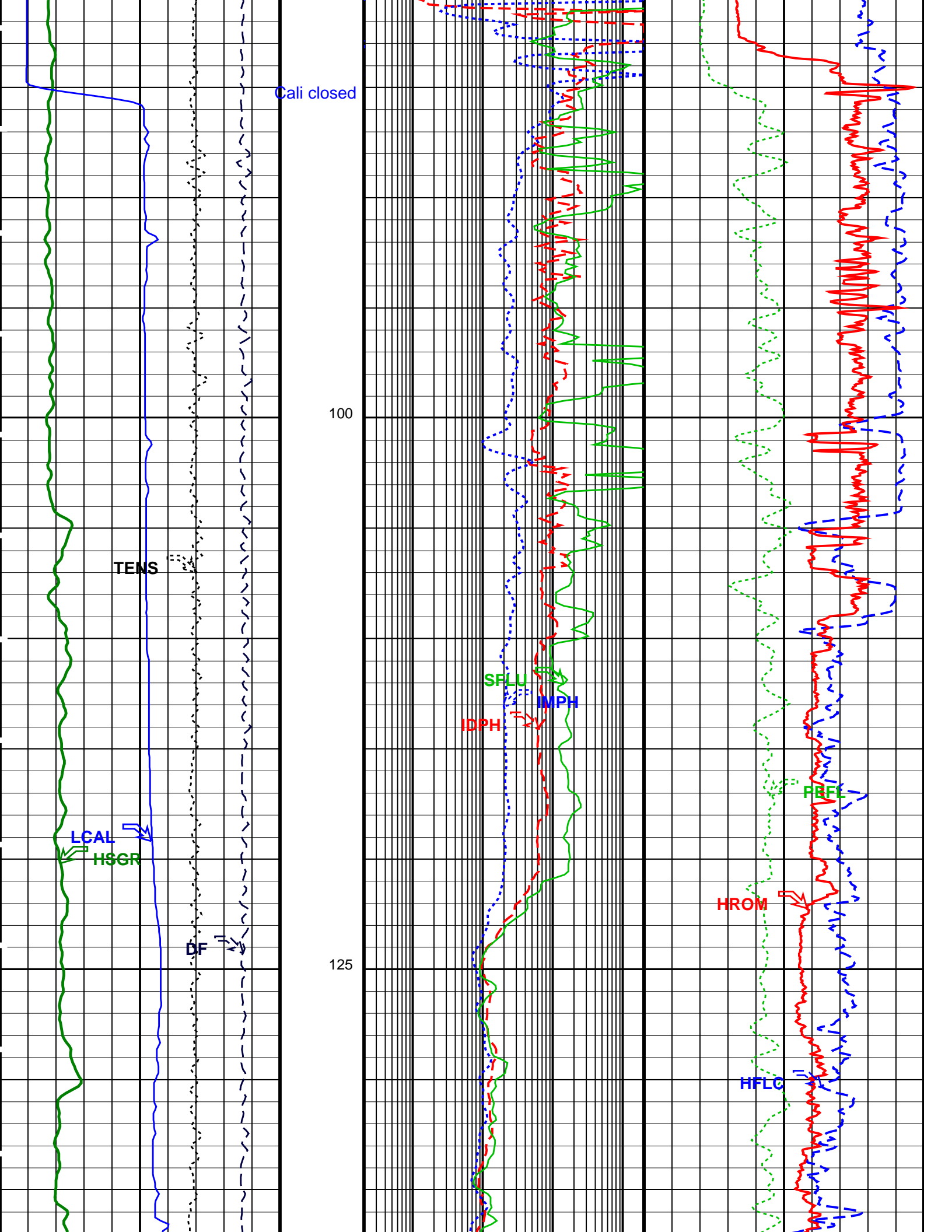
Uncalibrated Downhole Force (DF)		
10000	(LBF)	0

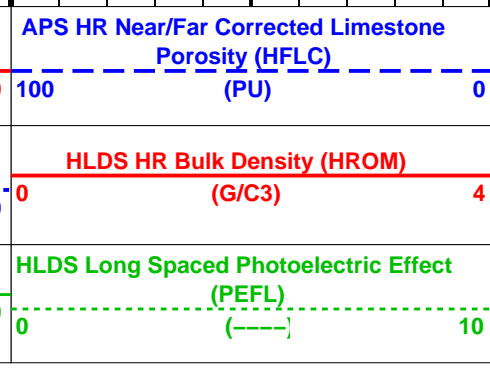
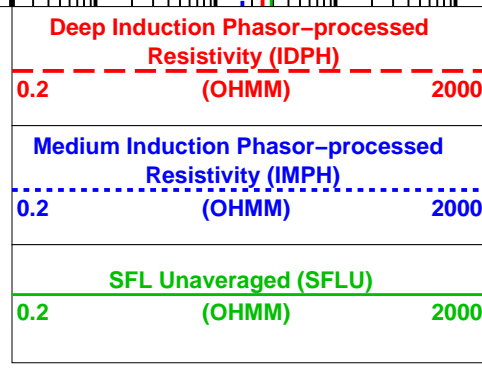
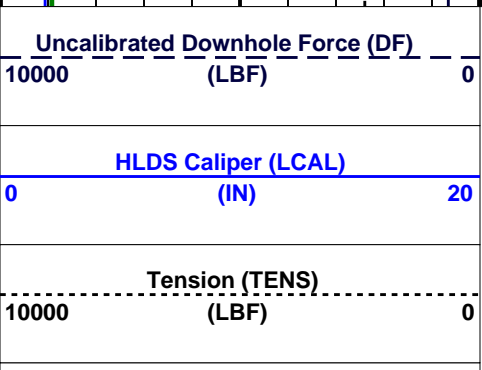
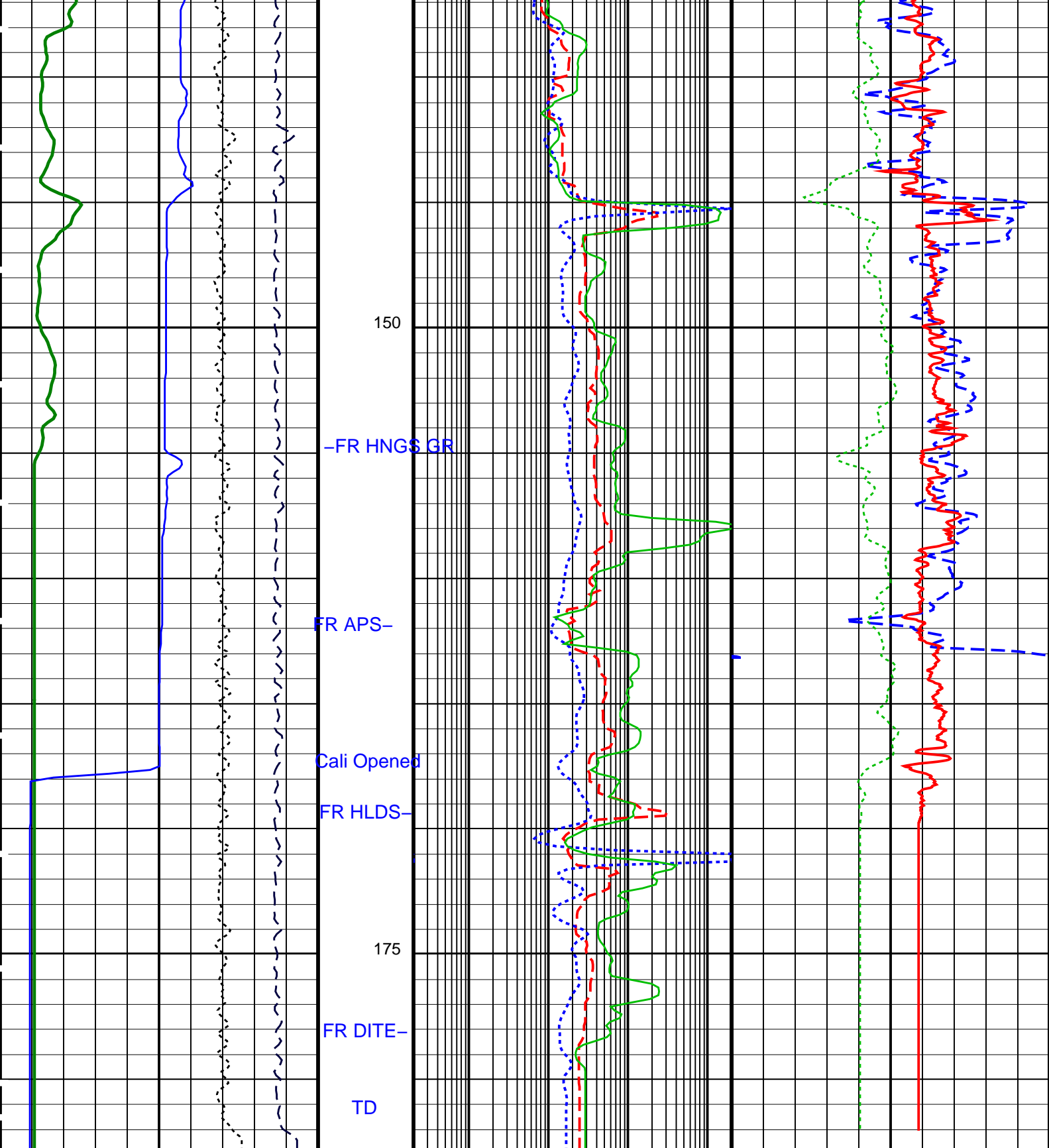
Main Log

SFL Unaveraged (SFLU)		HLDS Long Spaced Photoelectric Effect (PEFL)	
0.2	(OHMM)	2000	10
-----		-----	
Medium Induction Phasor-processed Resistivity (IMPH)		HLDS HR Bulk Density (HROM)	
0.2	(OHMM)	2000	4
-----		-----	
Deep Induction Phasor-processed Resistivity (IDPH)		APS HR Near/Far Corrected Limestone Porosity (HFCL)	
0.2	(OHMM)	2000	100
-----		-----	









PIP SUMMARY

Time Mark Every 60 S

Parameters

DLIS Name	Description	Value	
DIT-E: Dual Induction - E			
BHS	Borehole Status	OPEN	
BHT	Bottom Hole Temperature (used in calculations)	43	DEGF
DGF1	Deep 10 kHz Gain Factor	0.981463	
DGF2	Deep 20 kHz Gain Factor	0.992515	
DGF4	Deep 40 kHz Gain Factor	1.00423	
DPH1	Deep 10 kHz Phase Shift	0.032855	DEG
DPH2	Deep 20 kHz Phase Shift	-0.0620342	DEG
DPH4	Deep 40 kHz Phase Shift	-1.20308	DEG
DRE1	Deep Real 10 kHz Sonde Error Correction	42.3121	MM/M
DRE2	Deep Real 20 kHz Sonde Error Correction	17.1426	MM/M
DRE4	Deep Real 40 kHz Sonde Error Correction	4.87662	MM/M
DRIM	DIT-E Radial Invasion Mode	Rxo>Rt	
DSR1	Deep Sigma Reference (10 kHz)	7637	MM/M
DSR2	Deep Sigma Reference (20 kHz)	1843	MM/M
DSR4	Deep Sigma Reference (40 kHz)	405	MM/M
DSTA	DIT-E Transversal Standoff	0	IN
DXE1	Deep Quad 10 kHz Sonde Error Correction	251.392	MM/M
DXE2	Deep Quad 20 kHz Sonde Error Correction	137.206	MM/M
DXE4	Deep Quad 40 kHz Sonde Error Correction	77.8842	MM/M
GCSE	Generalized Caliper Selection	BS	
GDEV	Average Angular Deviation of Borehole from Normal	0	DEG
GGRD	Geothermal Gradient	0.01	DF/F
GRSE	Generalized Mud Resistivity Selection	CHART_GEN_9	
GTSE	Generalized Temperature Selection	LINEAR_ESTIMATE	
IFRS	DIT-E Induction Frequency Selector	20	
IPHA	DIT-E Phasor Processing Mode	ALL	
IPRO	DIT-E Induction Processing Selector	PHASOR	
ISSBAR	Barite Mud Switch	BARITE	
ITEN	DIT-E Temperature Enable	ENABLE	
MATR	Rock Matrix for Neutron Porosity Corrections	LIMESTONE	
MGF1	Medium 10 kHz Gain Factor	0.99033	
MGF2	Medium 20 kHz Gain Factor	0.995142	
MGF4	Medium 40 kHz Gain Factor	1.01918	
MPH1	Medium 10 kHz Phase Shift	-0.27707	DEG
MPH2	Medium 20 kHz Phase Shift	-0.890816	DEG
MPH4	Medium 40 kHz Phase Shift	-2.23551	DEG
MRE1	Medium Real 10 kHz Sonde Error Correction	32.7618	MM/M
MRE2	Medium Real 20 kHz Sonde Error Correction	10.896	MM/M
MRE4	Medium Real 40 kHz Sonde Error Correction	1.11433	MM/M
MSR1	Medium Sigma Reference (10 kHz)	13520	MM/M
MSR2	Medium Sigma Reference (20 kHz)	3250	MM/M
MSR4	Medium Sigma Reference (40 kHz)	685	MM/M
MXE1	Medium Quad 10 kHz Sonde Error Correction	336.356	MM/M
MXE2	Medium Quad 20 kHz Sonde Error Correction	177.452	MM/M
MXE4	Medium Quad 40 kHz Sonde Error Correction	115.531	MM/M
SBR	Shoulder Bed Resistivity Factor	1	OHMM
SFCR	SFL Channel Ratio	1000	
SFLE	SFL Enable	ENABLE	
SHT	Surface Hole Temperature	68	DEGF
SPAЕ	DIT-E SPARC Processing Enable	ENABLE	
SPNV	SP Next Value	0	MV
GPIT-A/B: General Purpose Inclinerometer			
ACPP	Accelerometer PROM Presence	PRESENT	
AFMO	Accelerometer Filtering Mode	MOVING_AVERAGE	
ART	Accelerometer Reference Temperature	20	DEGC
GLM	GPIT Logging Mode	DIPM	
ICMO	Inclinometry Computation Mode	AUTOMATIC_SELECTION	
MAPP	Magnetometer PROM Presence	PRESENT	
MDEC	Magnetic Field Declination	17.9362	DEG
MRTE	Magneto Reference Temperature	23	DEGC
TEMS	GPIT Temperature Sensor Used	BOTH	
U-GPOF	Playback OLD VERSION GPIT FILE (BEFORE OP14 + SRPC-3098-FEB_2006_C) ?	NO	
HLDS: Hostile Litho-Density Sonde			
CLCL	HLDS LS Control Loop Controller Mode	AUTO_DEFAULT	
CLCS	HLDS SS Control Loop Controller Mode	AUTO_DEFAULT	
CLLS	HLDS Mode Loop Long Spacing	AUTO	
CLSS	HLDS Mode Loop Short Spacing	AUTO	
DHC	Density Hole Correction	BS	
DPPM	Density Porosity Processing Mode	HIRS	
FD	Fluid Density	1	G/C3

LATC	HLDS Activation Correction	ON	
LLDL	HLDS LS Low Level Discriminator DAC	14000	
LLDS	HLDS SS Low Level Discriminator DAC	14000	
LLML	HLDS LS Low Level Discriminator Mode	AUTO	
LLMS	HLDS SS Low Level Discriminator Mode	AUTO	
MDEN	Matrix Density	2.71	G/C3
PHVL	HLDS Long Spacing High Voltage Setting	1000	V
PHVS	HLDS Short Spacing High Voltage Setting	1000	V
PSDL	HLDS LS Pulse Shape Compensation DAC	30000	
PSDS	HLDS SS Pulse Shape Compensation DAC	30000	
PSML	HLDS LS Pulse Shape Compensation Mode	AUTO	
PSMS	HLDS SS Pulse Shape Compensation Mode	AUTO	

APS-C: Accelerator-Porosity Tool

	APS Software Version	0	
AASD	APS Thermal and Array Detectors High Voltage Setting	1968.14	V
ADSO	APS Array Detectors Data Source Switch	Both	
AFSD	APS Far Detector High Voltage Setting	2080.2	V
AHCS	APS Holesize Correction Source	BS	
AHSS	APS Holesize Correction Switch	ON	
AMTY	APS Environmental Corrections Mud Type	WaterBaseBarite	
ANSD	APS Near Detector High Voltage Setting	1733.87	V
ASOS	APS Standoff Correction Switch	ON	
ATSS	APS Temperature-Pressure-Salinity Correction Switch	ON	
BHFL_APS	APS TNPH Borehole Fluid Type	WATER	
BHS	Borehole Status	OPEN	
BHT	Bottom Hole Temperature (used in calculations)	43	DEGF
BSCO_APS	APS TNPH Borehole Salinity Correction Option	YES	
DPPM	Density Porosity Processing Mode	HIRS	
DSCO_APS	APS TNPH Density Source Correction Option	COMPUTED	
FSAL	Formation Salinity	-50000	PPM
FSCO_APS	APS TNPH Formation Salinity Correction Option	NO	
GCSE	Generalized Caliper Selection	BS	
GDEV	Average Angular Deviation of Borehole from Normal	0	DEG
GGRD	Geothermal Gradient	0.01	DF/F
GRSE	Generalized Mud Resistivity Selection	CHART_GEN_9	
GTSE	Generalized Temperature Selection	LINEAR_ESTIMATE	
HSCO_APS	APS TNPH Hole Size Correction Option	YES	
ISSBAR	Barite Mud Switch	BARITE	
MATR	Rock Matrix for Neutron Porosity Corrections	LIMESTONE	
MCCO_APS	APS TNPH Mud Cake Correction Option	YES	
MCOR_APS	APS TNPH Mud Correction	NATU	
MWCO_APS	APS TNPH Mud Weight Correction Option	YES	
NARC	APS Near/Array Calibration Ratio	1.06008	
NFRC	APS Near/Far Calibration Ratio	0.890428	
PTCO_APS	APS TNPH Pressure/Temperature Correction Option	YES	
SHT	Surface Hole Temperature	68	DEGF
TNCO_APS	APS TNPH Computation Option	YES	

HNGS-BA: Hostile Natural Gamma Ray Sonde

BAR1	HNGS Detector 1 Barite Constant	1	
BAR2	HNGS Detector 2 Barite Constant	1	
BHK	HNGS Borehole Potassium Correction Concentration	0	
BHS	Borehole Status	OPEN	
BHT	Bottom Hole Temperature (used in calculations)	43	DEGF
CSD1	Inner Casing Outer Diameter	0	IN
CSD2	Outer Casing Outer Diameter	0	IN
CSW1	Inner Casing Weight	0	LB/F
CSW2	Outer Casing Weight	0	LB/F
DBCC	HNGS Barite Constant Correction Flag	NONE	
GCSE	Generalized Caliper Selection	BS	
GDEV	Average Angular Deviation of Borehole from Normal	0	DEG
GGRD	Geothermal Gradient	0.01	DF/F
GRSE	Generalized Mud Resistivity Selection	CHART_GEN_9	
GTSE	Generalized Temperature Selection	LINEAR_ESTIMATE	
H1P	HNGS Detector 1 Allow/Disallow In Processing	ALLOW	
H2P	HNGS Detector 2 Allow/Disallow In Processing	ALLOW	
HABK	HNGS Borehole Potassium Running Average	-0.00533577	
HALF	HNGS Alpha Filter Length	60	IN
HCRB	HNGS Apply Borehole Potassium Correction	NONE	
HMWM	Mud Weighting Material	NATU	
HNPE	HNGS Processing Enable	YES	
ISSBAR	Barite Mud Switch	BARITE	
MATR	Rock Matrix for Neutron Porosity Corrections	LIMESTONE	
S1BI	HNGS Detector 1 Calibration Bismuth Count Rate	1.3	CPS
S2BI	HNGS Detector 2 Calibration Bismuth Count Rate	1.3	CPS
SGRC	HNGS Standard Gamma-Ray Correction Flag	YES	
SHT	Surface Hole Temperature	68	DEGF
TPOS	Tool Position	ECCE	
VBA1	HNGS Detector 1 Variable Barite Factor Running Average	0.615824	
VBA2	HNGS Detector 2 Variable Barite Factor Running Average	1.20133	

System and Miscellaneous

ALTDCHAN	Name of alternate depth channel	SpeedCorrectedDepth	
BS	Bit Size	9.875	IN
BSAL	Borehole Salinity	-50000.00	PPM
CSIZ	Current Casing Size	4.500	IN
CSWF	Current Mud Weight	2.000	LB/F

CWEI	Casing weight	0.00	LB/F
DFD	Drilling Fluid Density	1.26	G/C3
DO	Depth Offset for Playback	-1514.0	M
FLEV	Fluid Level	-50000.00	M
MST	Mud Sample Temperature	-50000.00	DEGC
PBVSADP	Use alternate depth channel for playback	NO	
PP	Playback Processing	NORMAL	
RMFS	Resistivity of Mud Filtrate Sample	-50000.0000	OHMM
RW	Resistivity of Connate Water	1.0000	OHMM
TD	Total Depth	600	FT
TDD	Total Depth - Driller	183.00	M
TDL	Total Depth - Logger	182.00	M
TWS	Temperature of Connate Water Sample	15.00	DEGC

Format: TripleCombo Vertical Scale: 1:200 Graphics File Created: 11-Feb-2011 10:53

OP System Version: 17C0-154


DIT-E	17C0-154	GPIT-A/B	SRPC-3971-Q1_2010_OP17
DTA-A	17C0-154	HLDS	SPC-3961-OP17_NUCL
LDSC-B	SPC-3961-OP17_NUCL	APS-C	SPC-3961-OP17_NUCL
HNGC-B	SPC-3961-OP17_NUCL	HNGS-BA	SPC-3961-OP17_NUCL
DTC-H	17C0-154		

Input DLIS Files

DEFAULT	PI_LDL_APS_NGS_034PUP	FN:50	PRODUCER	03-Feb-2011 08:52	1696.2 M	1502.5 M
---------	-----------------------	-------	----------	-------------------	----------	----------

Output DLIS Files

DEFAULT	PI_LDL_APS_NGS_044PUP	FN:2	PRODUCER	11-Feb-2011 10:53		
---------	-----------------------	------	----------	-------------------	--	--

Company:	Lamont Doherty	
Well:	Expedition 330 Site U1376A	
Field:	Louisville Seamounts	
Rig:	JOIDES Resolution	
Ocean:	Pacific	

Triple Combo
DITE/HLDS/APS
Natural Gamma Ray