

# Integration Summary

Output Channel(s)	Output Description	Input Parameter	Output Value	Unit
-------------------	--------------------	-----------------	--------------	------

## Software Version

Acquisition System		Version		
MaxWell		2.1.6903.0		
Application Patch		SP-20110302-2.1.6903.1130		
Computation	Description			Version
RAB6GR	RAB6 Gamma Ray Computation Package for both Real-time and Recorded Mode			2.1.6903.1067
RAB6Res	RAB6 Resistivity Computation Package for both Real-time and Recorded Mode			2.1.6903.1067
Tool Elements	Description	Software Version	Firmware Version	
RBEC	Electronics Chassis Assembly for RAB6-C	2.1.6903.1067	V8.5B	

## Pass Summary

Run Name	Objective	Direction	Top	Bottom	Start Time	Stop Time
Run1	Drilling	Down	64.80 m	992.25 m	17-Mar-2011 21:53:54	19-Mar-2011 21:09:21

All depths are referenced to toolstring zero

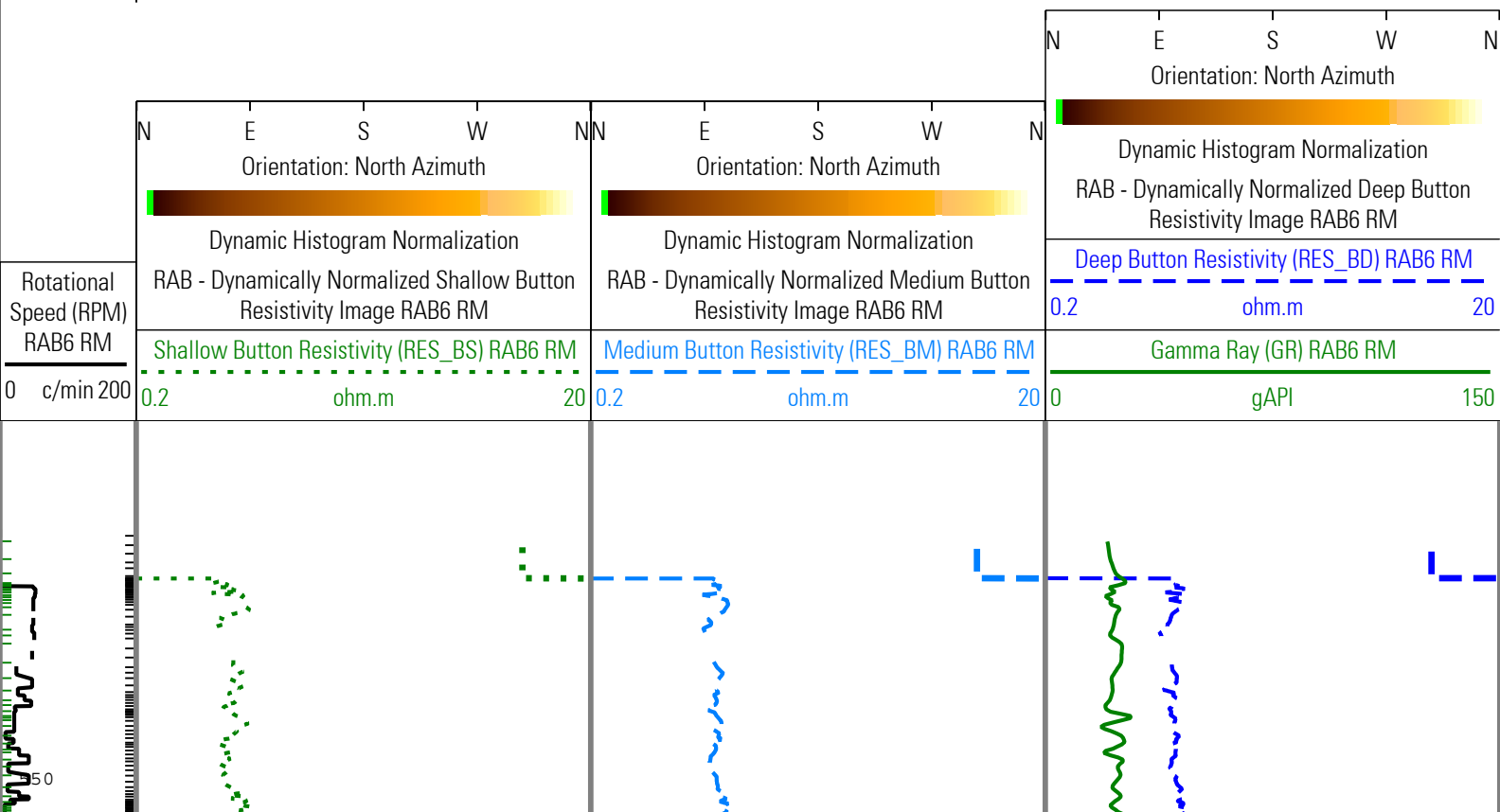
## Log

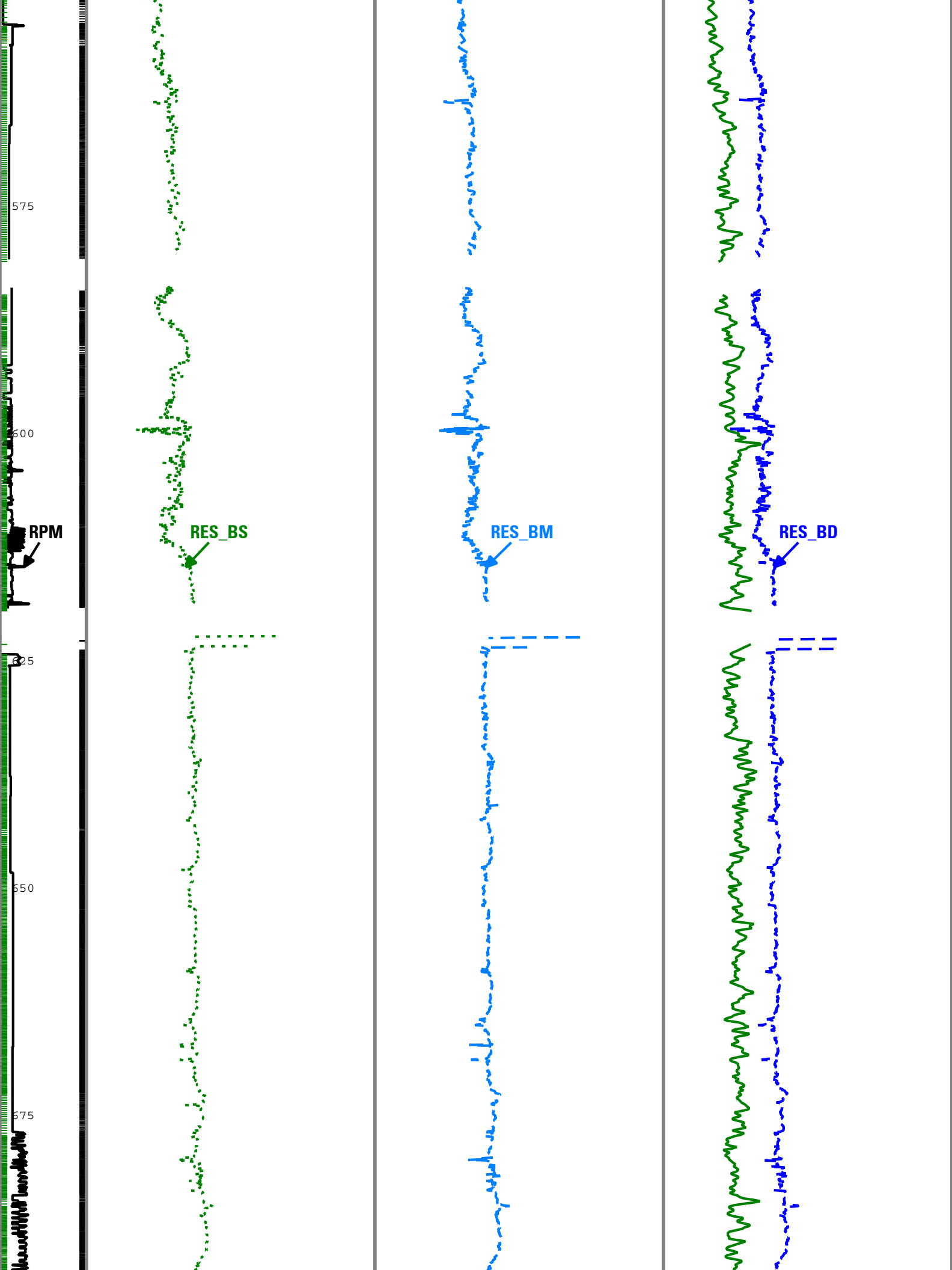
Run1: Drilling EF739E37-774F-4F79-B87E-A87B79D3DF9A

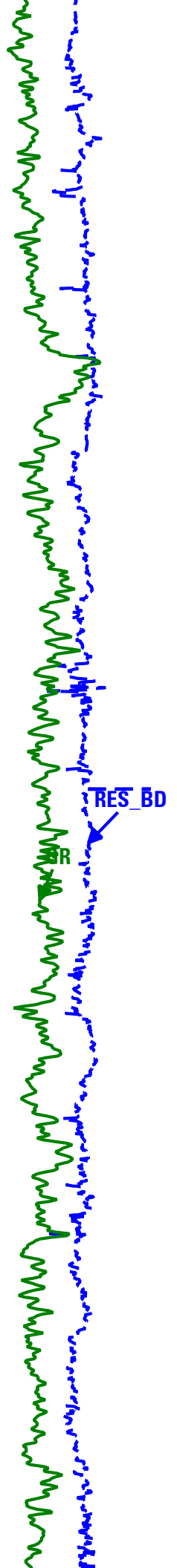
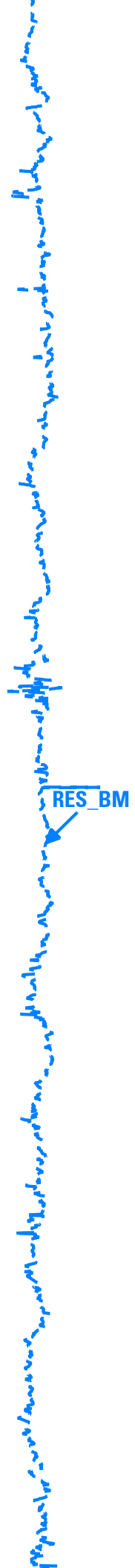
Description: RAB Three Button Dynamic Images Format: Log ( RAB Three Button Dynamic Images ) Index Scale: 1:500 Index Unit: m Index Type: Measured  
 Depth Creation Date: 21-Mar-2011 14:22:19

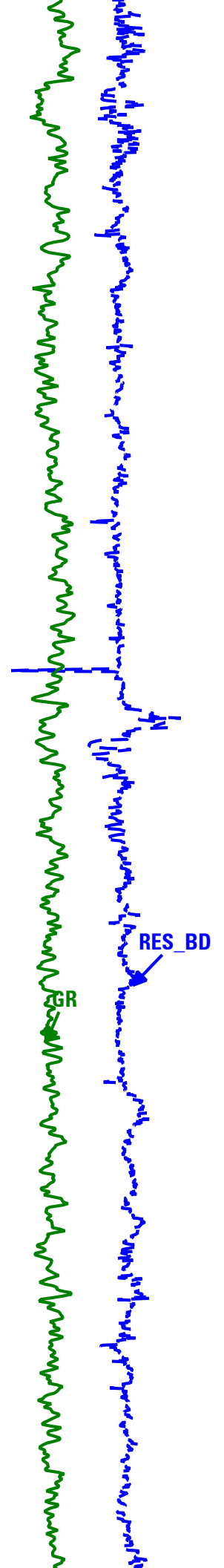
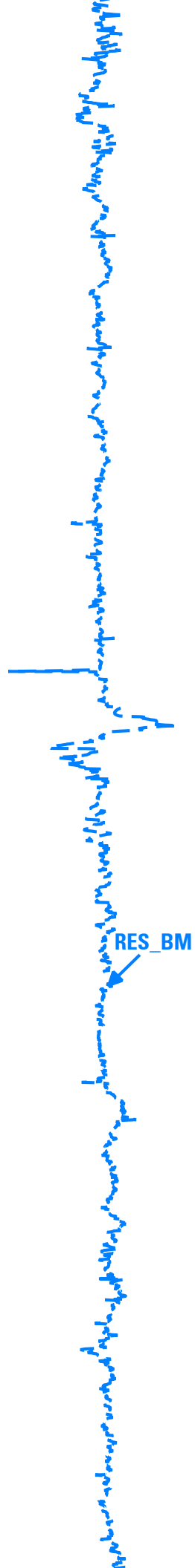
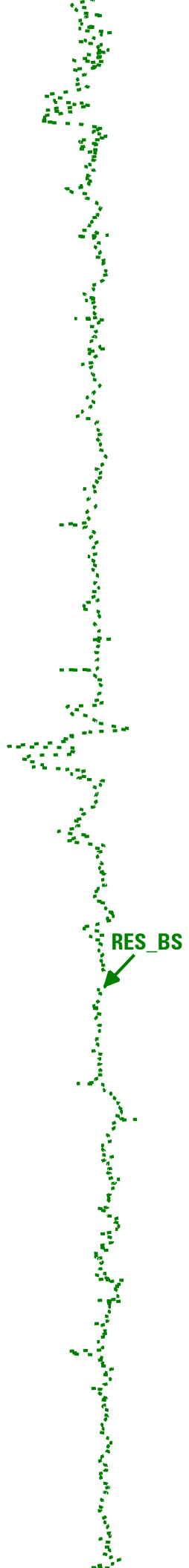
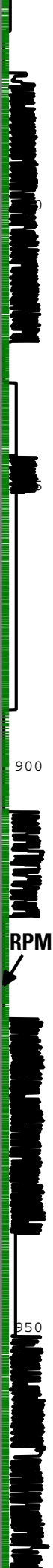
Channel	Source	Sampling
GR	RAB6:RAB6:RBEC	6in - RM
RES_BD	RAB6:RAB6:RBEC	1.2in - RM
RES_BM	RAB6:RAB6:RBEC	1.2in - RM
RES_BS	RAB6:RAB6:RBEC	1.2in - RM
RPM	RAB6:RAB6	1.2in - RM
TICKS_GR	RAB6:RAB6:RBEC	1.2in - RM
TICKS_RING	RAB6:RAB6:RBEC	1.2in - RM

- TICKS\_GR - Gamma Ray Tick Marks RAB6 RM  
 - TICKS\_RING - Ring Sample Tick Marks RAB6 RM

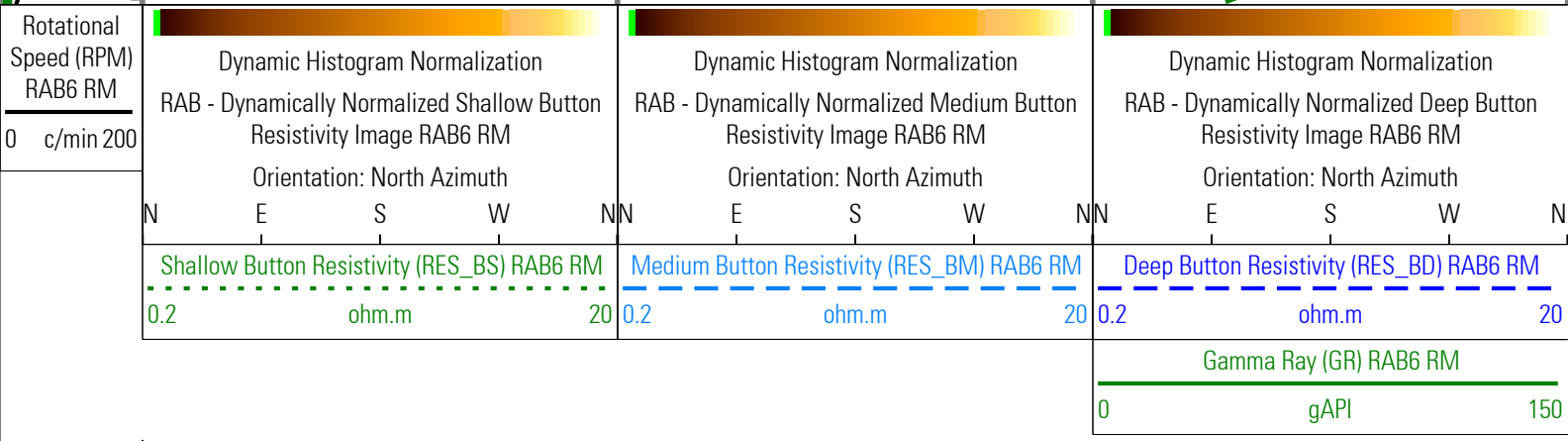








Final Depth 992m



-TICKS\_RING - Ring Sample Tick Marks RAB6 RM

-TICKS\_GR - Gamma Ray Tick Marks RAB6 RM

Description: RAB Three Button Dynamic Images    Format: Log ( RAB Three Button Dynamic Images )    Index Scale: 1:500    Index Unit: m    Index Type: Measured  
 Depth    Creation Date: 21-Mar-2011 14:22:19

### Channel Processing Parameters

Parameter	Description	ToolPath	Value	Unit
BHK	Drilling Fluid Potassium Concentration	Borehole	0	%
BHT	Bottom Hole Temperature	Borehole	25	degC
BS	Bit Size	COMPLETION	8.5	in
DEPTH_SEL	Depth Selection Parameter	DNMSESSION	Driller's Depth	
DFD	Drilling Fluid Density	Borehole	1.03	g/cm3
DFT	Drilling Fluid Type	Borehole	Water	
GGRD	Geothermal Gradient	Borehole	1	0.01 degF/ft
GRSE_RM	Generalized Mud Resistivity Selection for Recorded Mode	Borehole	REMS	
GTSE_RT	Generalized Temperature Selection for Realtime Mode	Borehole	GTEM_GRDSURF	
MST	Mud Sample Temperature	Borehole	23.89	degC
RMS	Resistivity of Mud Sample	Borehole	0.2	ohm.m
SHT	Surface Hole Temperature	Borehole	20	degC
TD	Total Measured Depth	Borehole	992.27	m
TEMP_SEL_RAB	RAB Temperature Selection	RAB6:RAB6:RBEC	Tool	

### Tool Control Parameters