

# Processed Data

## Depth Reference: m WMSF

\* A Mark of Schlumberger

Using the following logs: HRLA/APS/HLDS/GPIT/EDTC/MTT

COMPANY: Lamont Doherty Earth Observatory

WELL: 1256D

FIELD: Guatemala Basin

Rig: Joides Resolution

Ocean: Pacific Ocean

COUNTRY: Costa Rica

Date Logged: 26-May-2011 Date Processed:

Well Location: Latitude: 6° 44.1631 N Longitude: 91° 56.0612 W

Elevations: KB: DF: GL:

API Number: Job Number:

FOLD HERE The well name, location and borehole reference data were furnished by the customer.

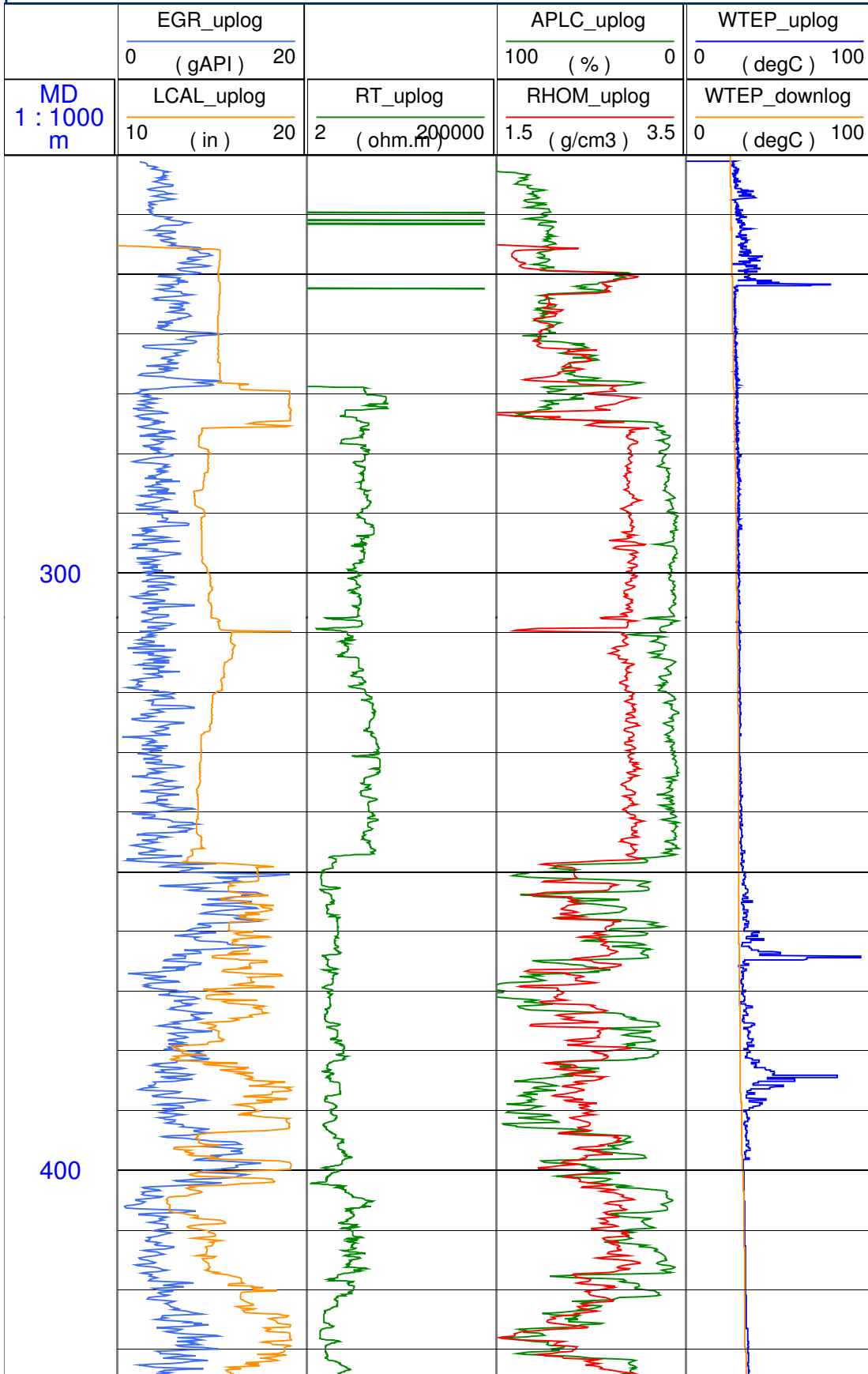
All interpretations are opinions based on inferences from electrical or other measurements and we cannot, and do not guarantee the accuracy or correctness of any interpretation, and we shall not, except in the case of gross or willful negligence on our part, be liable or responsible for any loss, costs, damages or expenses incurred or sustained by anyone resulting from any interpretations made by any of our officers, agents or employees. These interpretations are also subject to Clause 4 of our General Terms and Conditions as set out in our current Price Schedule.

Field Recording:	Location:	Software Version:	Engineer:
Office Recording:	ICS Center:	Baseline:	Log Analyst:
<b>Mud and Borehole Measurements:</b>			
Rm @ Measured Temperature:	@	BHT:	Bitsize:
Rmf @ Measured Temperature:	@	Type Fluid in Hole:	Sea water
Rmc @ Measured Temperature:	@	Mud Density: 1g/cm3	

Remarks:

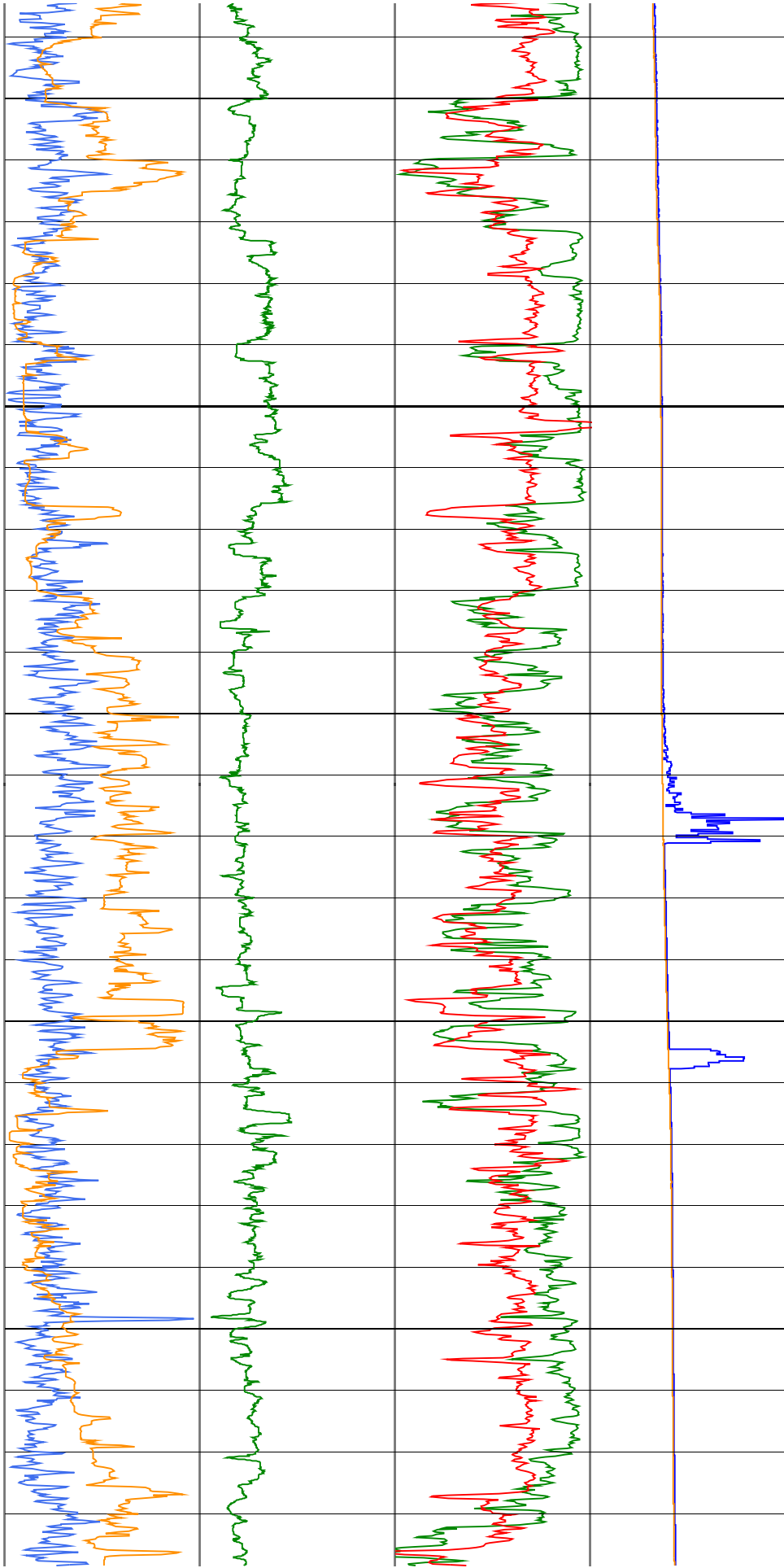
Data depth-shifted and depth-matched. Depth reference: Main Pass of DLL from Expedition 312.  
Water Depth: 3643.5 m WRF.

Average Heave: 1 m. Wireline Heave Compensator used.



500

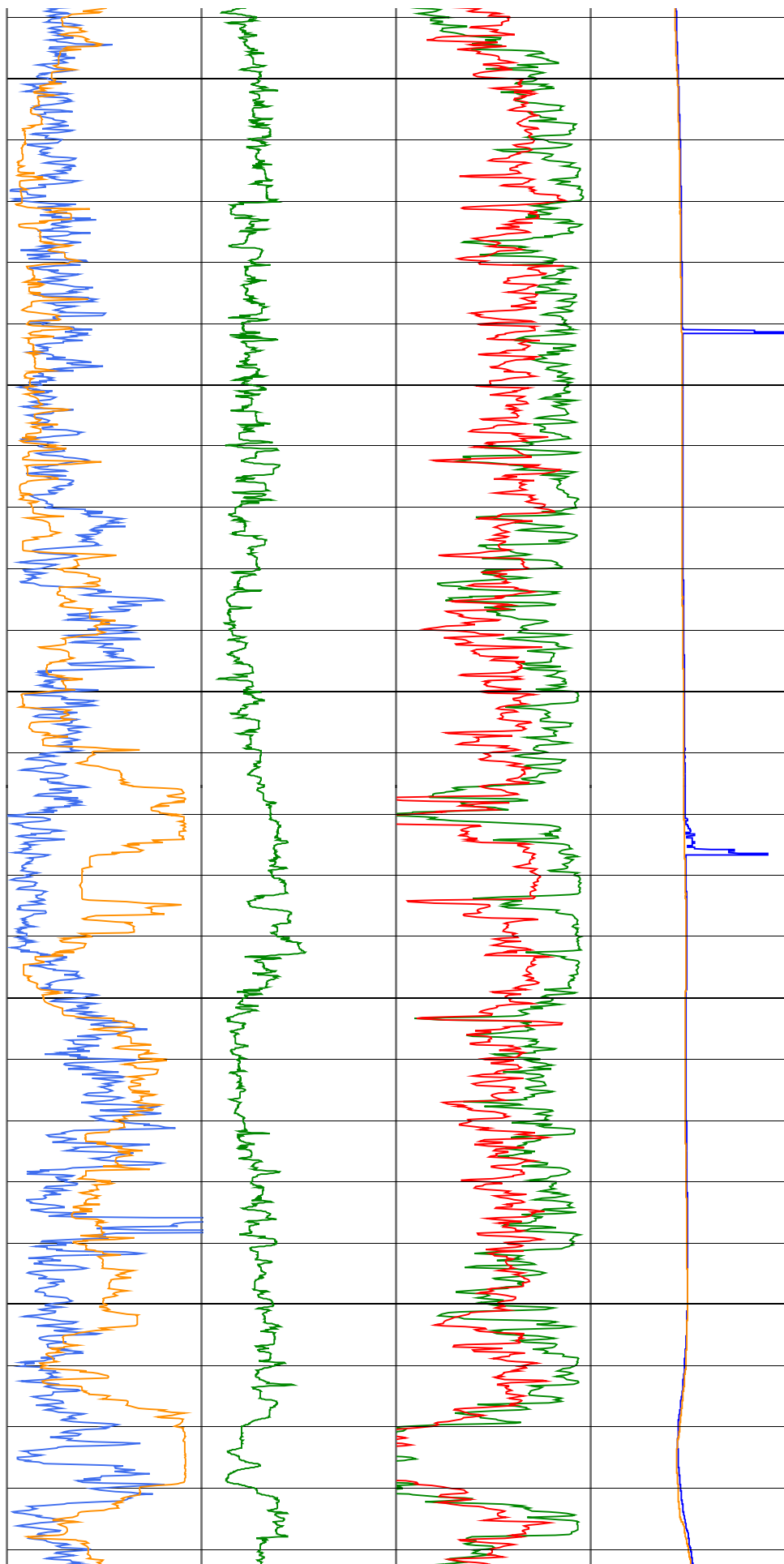
600



700

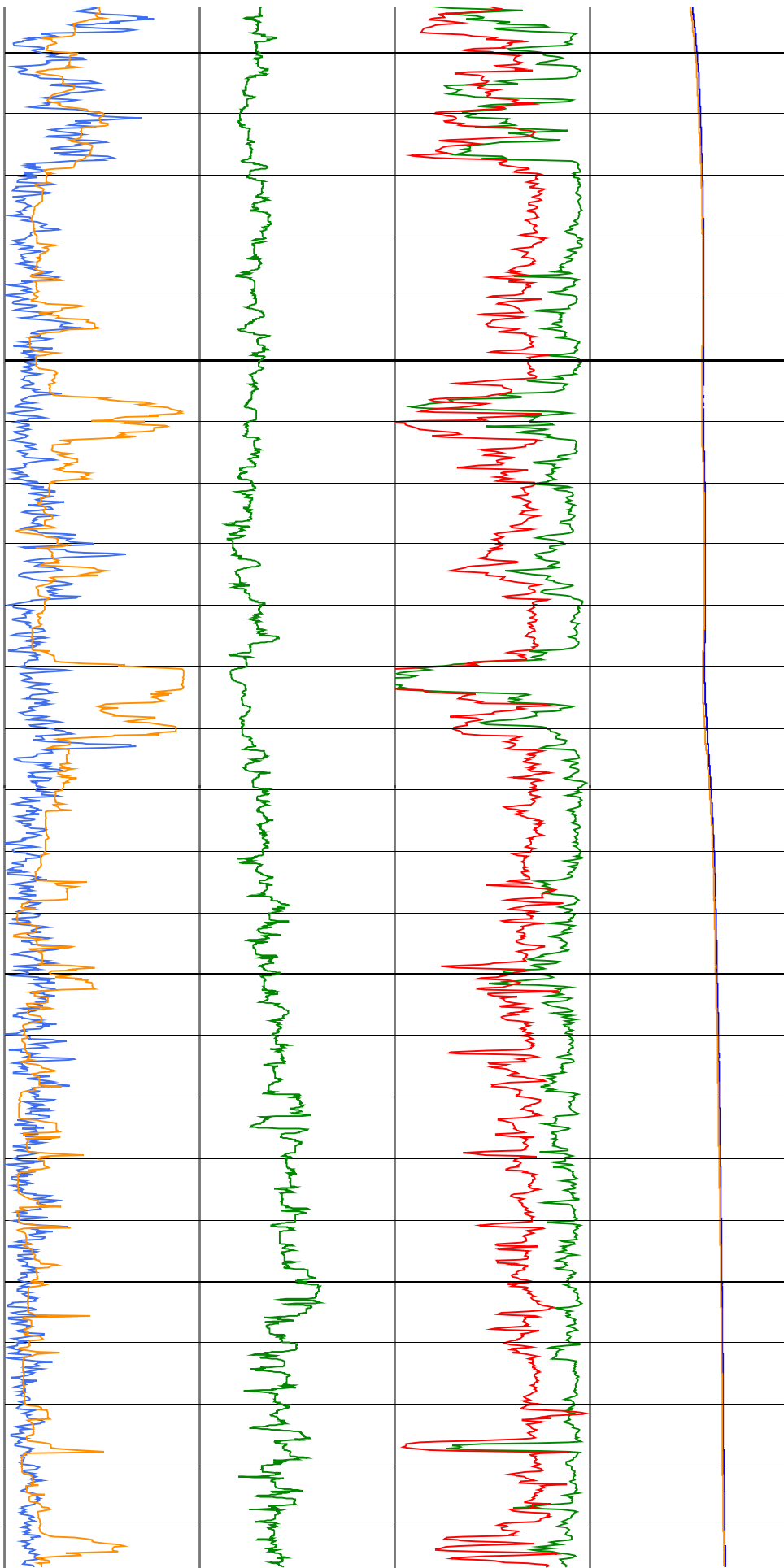
800

900



1000

1100



1200

1300

1400

