

DISCLAIMER
 THE USE OF AND RELIANCE UPON THIS RECORDED-DATA BY THE HEREIN NAMED COMPANY (AND ANY OF ITS AFFILIATES, PARTNERS, REPRESENTATIVES, AGENTS, CONSULTANTS AND EMPLOYEES) IS SUBJECT TO THE TERMS AND CONDITIONS AGREED UPON BETWEEN SCHLUMBERGER AND THE COMPANY, INCLUDING: (a) RESTRICTIONS ON USE OF THE RECORDED-DATA; (b) DISCLAIMERS AND WAIVERS OF WARRANTIES AND REPRESENTATIONS REGARDING COMPANY'S USE OF AND RELIANCE UPON THE RECORDED-DATA; AND (c) CUSTOMER'S FULL AND SOLE RESPONSIBILITY FOR ANY INFERENCE DRAWN OR DECISION MADE IN CONNECTION WITH THE USE OF THIS RECORDED-DATA.

OTHER SERVICES1
 OS1: HLDS/HRLA/HNGS
 OS2: VSI
 OS3: FM/DSI
 OS4:
 OS5:

OTHER SERVICES2
 OS1:
 OS2:
 OS3:
 OS4:
 OS5:

REMARKS: RUN NUMBER 1
 Hole GC-11A Hole C was drilled with a 9 7/8" APC/XCB bit to TDD of 356 mbsf.
 Hole depth referenced from sea floor based on driller measurement is 656 m.
 Log played back for sea floor depth reference but matches the main log from the HRLA-HLDS-HNGS primarily as there is a depth discrepancy caused by the active heave compensator after it was stopped prior to going into drill pipe.
 All logs recorded via wireline thru 5.5" drillpipe and RCB coring BHA. consisting of a bit release sub, Kinley sub, drill collars. The LFV flapper valve was above the bit.

REMARKS: RUN NUMBER 2

RUN 1		
SERVICE ORDER #:		
PROGRAM VERSION:	19C0-187	
FLUID LEVEL:		
LOGGED INTERVAL	START	STOP

RUN 2		
SERVICE ORDER #:		
PROGRAM VERSION:		
FLUID LEVEL:		
LOGGED INTERVAL	START	STOP




EQUIPMENT DESCRIPTION

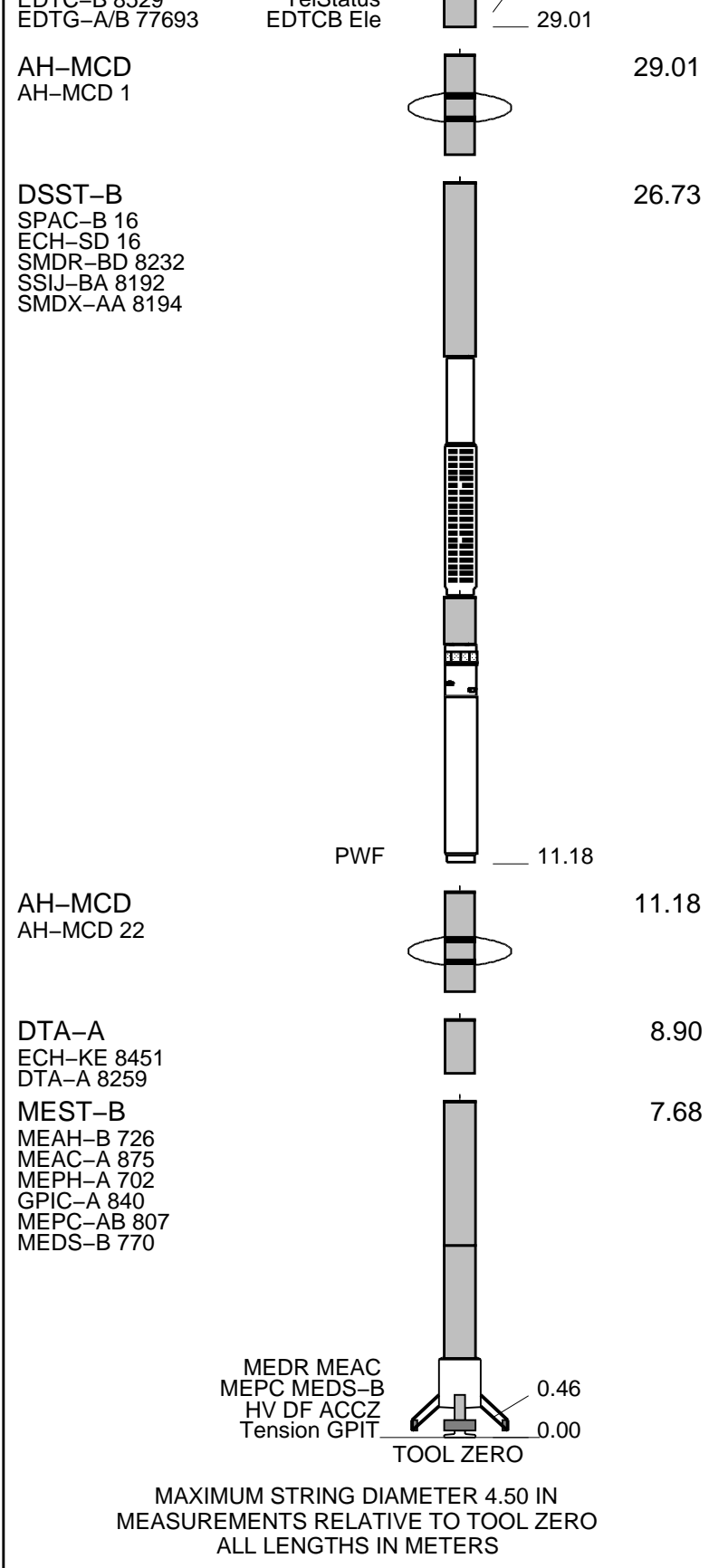
RUN 1

SURFACE EQUIPMENT
 WITM (EDTS)-A 1

RUN 2

DOWNHOLE EQUIPMENT

LEH-QT			32.31
LEH-QT 301			
AH-369			
MDSB_EDTC			
Mud Tempe		30.99	
CTEM		29.92	
Gamma Ray		29.35	30.99
EDTC-B			
EDTH-B 8528			
EDTC B 8528			
EFTB DIAG			
TelStatus			



Production String	(in)	(M)	Well Schematic	(M)	(in)	Casing String
	OD	ID		MD	MD	

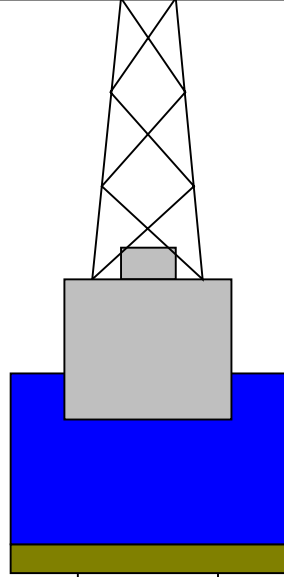
Kelly Bushing Elevation
Derrick Floor Elevation

Mean Sea Level

-656

-656

-645



4.1



0

3.80

86

9.875

355

Sea Floor

Open Hole

Total Depth

Input DLIS Files

DEFAULT FMS_DSI_025LUP FN:39 PRODUCER 24-Dec-2011 08:36 1010.6 M 643.6 M

Output DLIS Files

DEFAULT FMS_DSI_054PUP FN:73 PRODUCER 27-Dec-2011 04:02 357.2 M -9.8 M

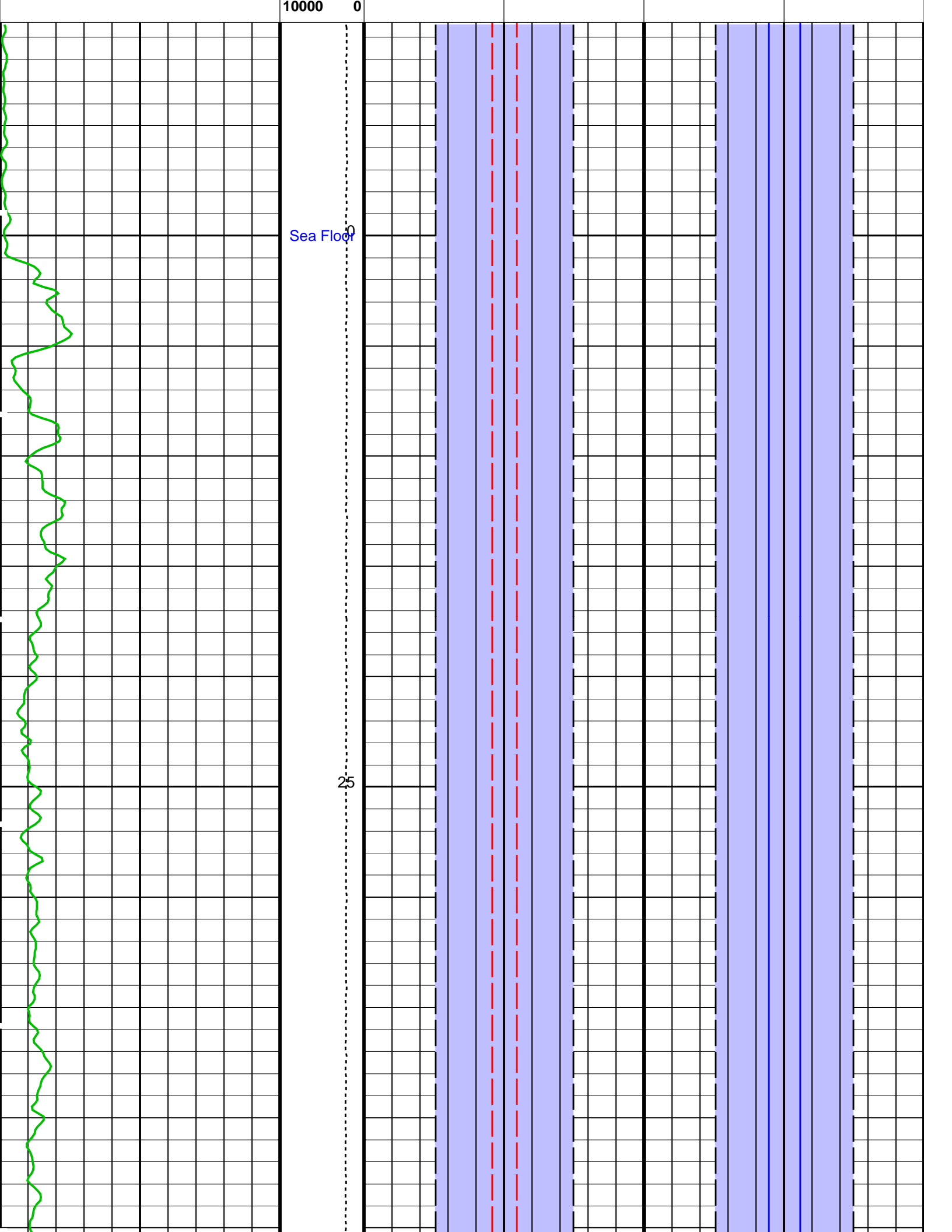
OP System Version: 19C0-187

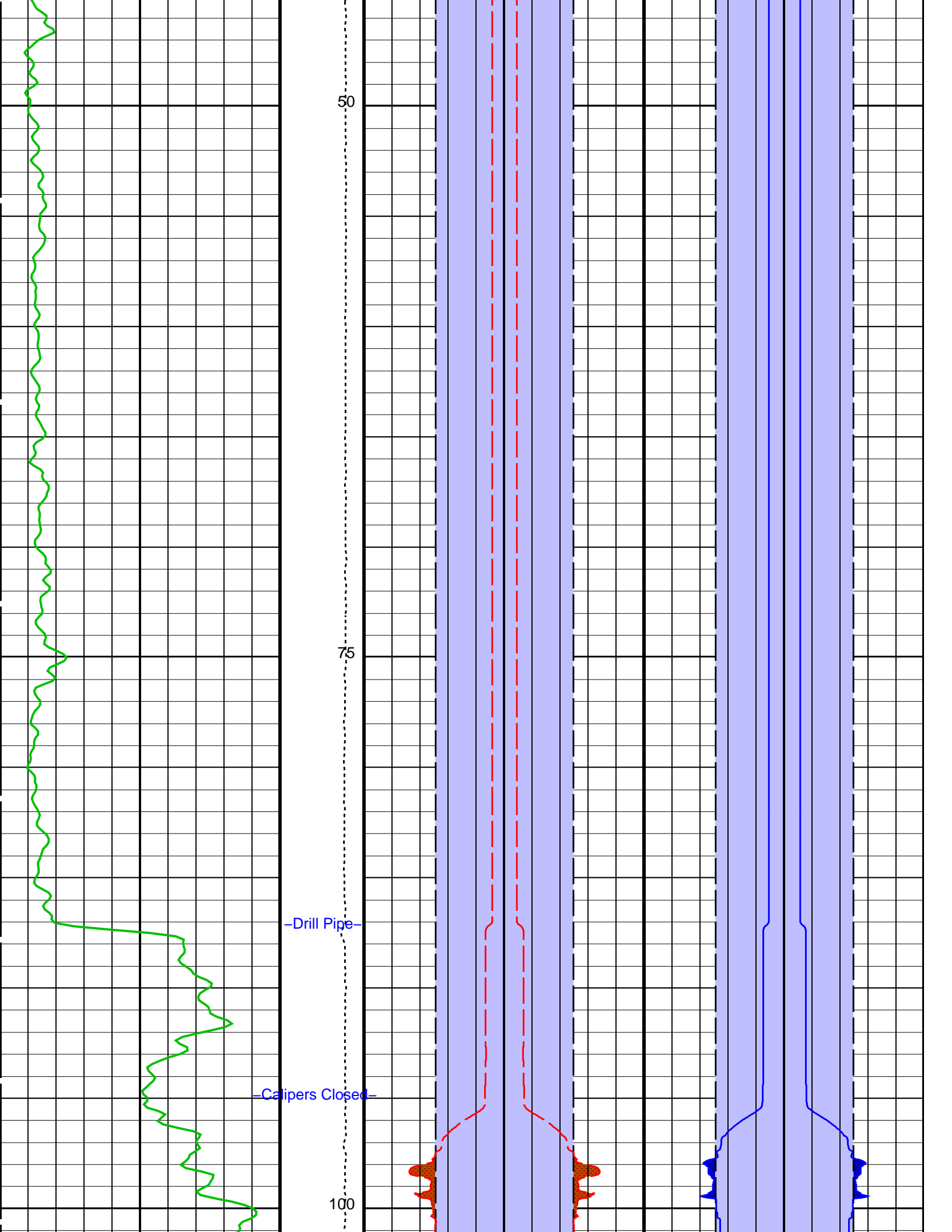
MEST-B 19C0-187 DTA-A 19C0-187
 DSST-B 19C0-187 EDTC-B 19C0-187

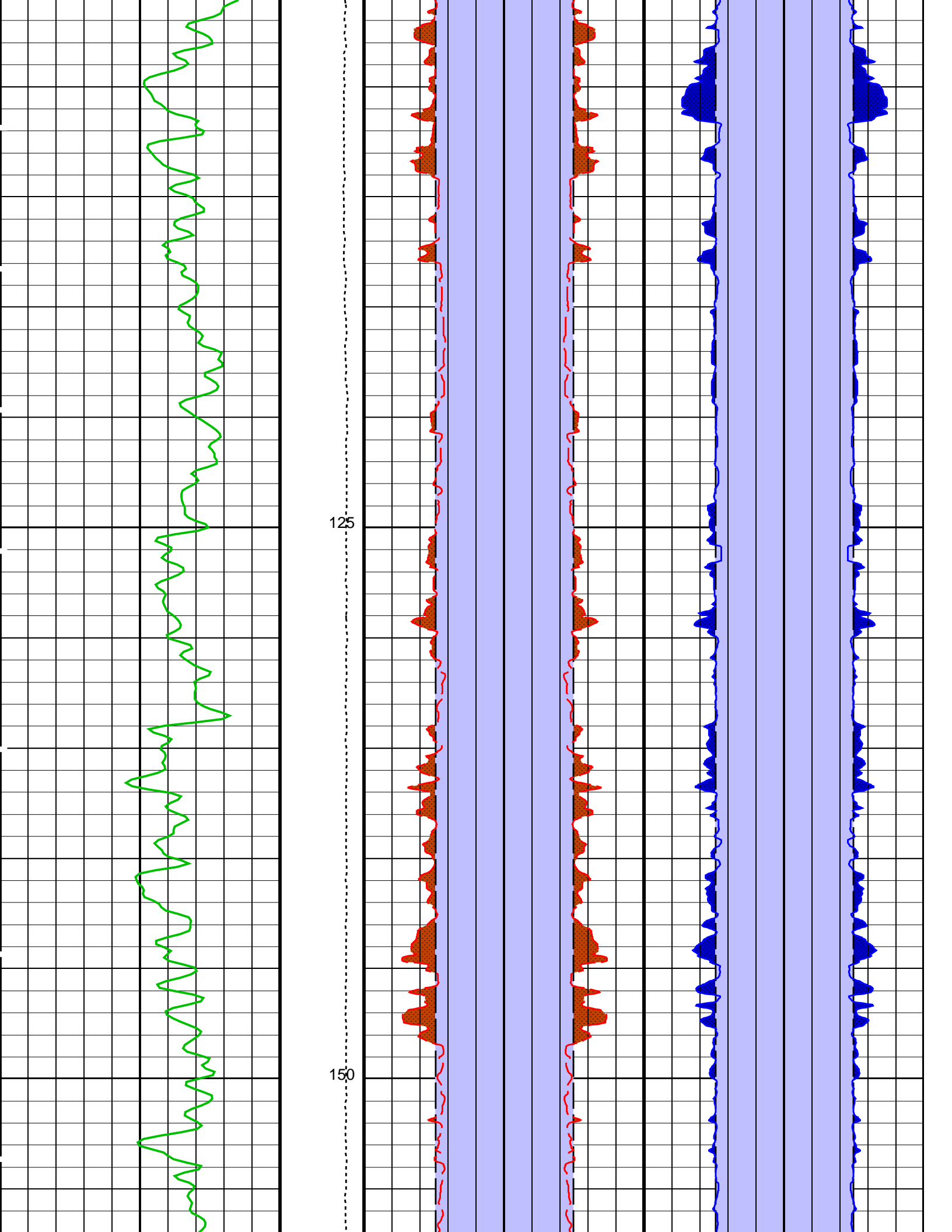
PIP SUMMARY

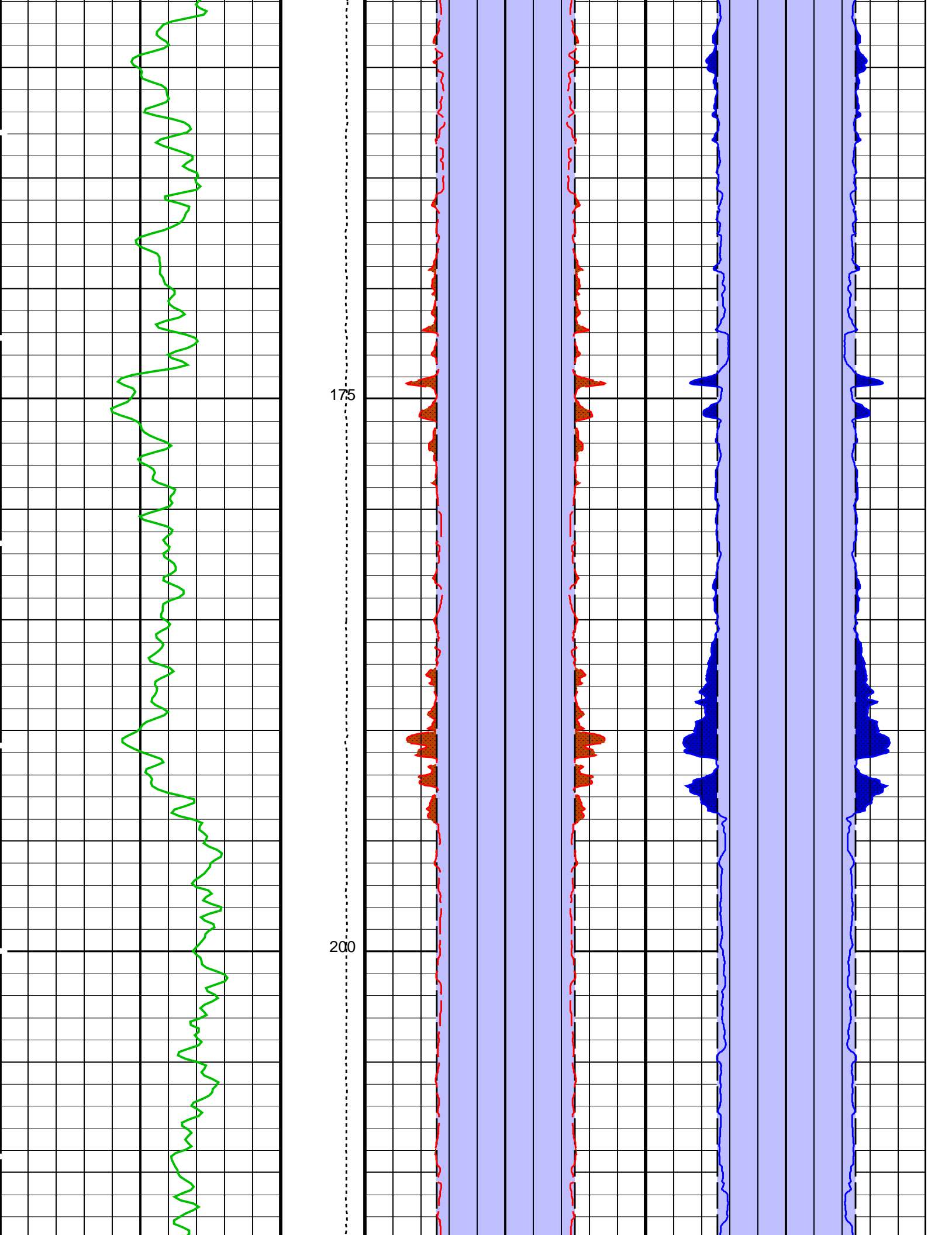
Time Mark Every 60 S

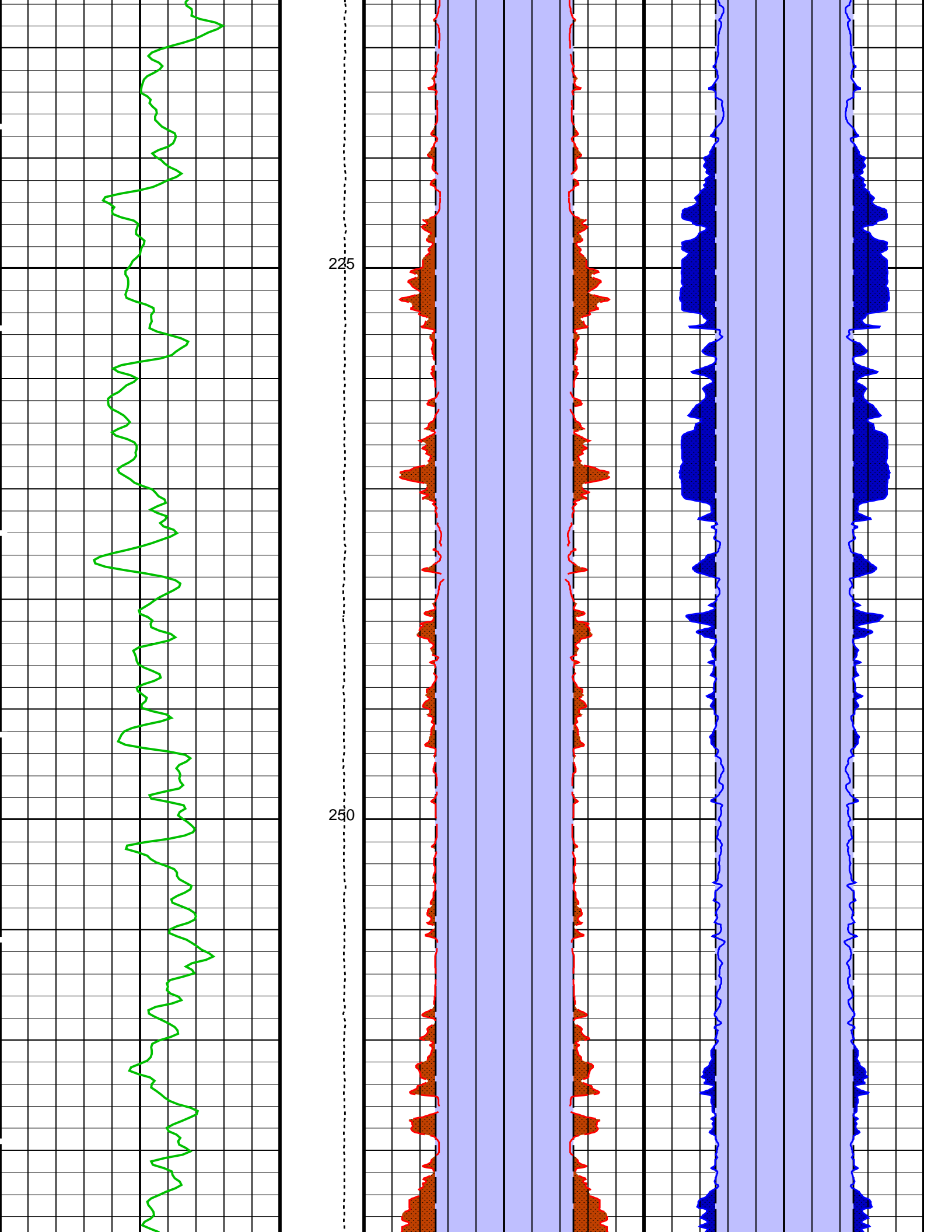
2nd Pass, Sea Floor Depth Reference	Area From BS to BS_1		Area From BS_3 to BS_2			
	Area From C1 to BS	Area From BS_1 to C1_1	Area From C2 to BS_3	Area From BS_2 to C2_1		
	Caliper 1 (C1)	Caliper 1 (C1)	Caliper 2 (C2)	Caliper 2 (C2)		
	20 (IN) 0 0	0 0 (IN) 20	20 (IN) 0 0	0 0 (IN) 20		
Gamma Ray (GR_EDTC) (GAPI)	Tension (TENS) (LBF)	Bit Size (BS)	Bit Size (BS)	Bit Size (BS)	Bit Size (BS)	
0 75		20 (IN) 0 0	0 0 (IN) 20	20 (IN) 0 0	0 0 (IN) 20	

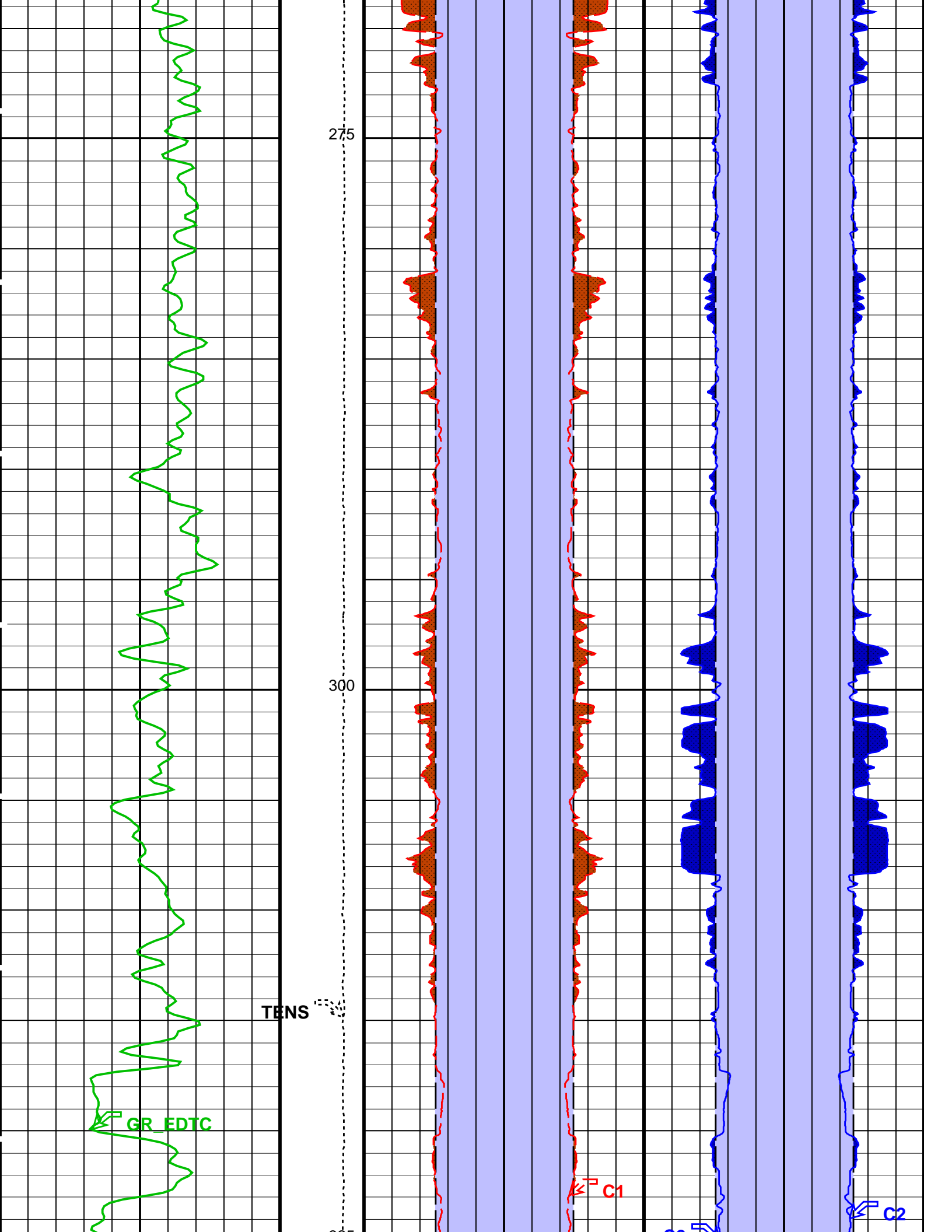












MEST-B	19C0-187	DTA-A	19C0-187
DSST-B	19C0-187	EDTC-B	19C0-187

Input DLIS Files

DEFAULT	FMS_DSI_025LUP	FN:39	PRODUCER	24-Dec-2011 08:36	1010.6 M	643.6 M
---------	----------------	-------	----------	-------------------	----------	---------

Output DLIS Files

DEFAULT	FMS_DSI_054PUP	FN:73	PRODUCER	27-Dec-2011 04:02
---------	----------------	-------	----------	-------------------

Input DLIS Files

DEFAULT	FMS_DSI_024LUP	FN:37	PRODUCER	24-Dec-2011 07:05	1009.6 M	777.8 M
---------	----------------	-------	----------	-------------------	----------	---------

Output DLIS Files

DEFAULT	FMS_DSI_053PUP	FN:72	PRODUCER	27-Dec-2011 03:56	356.3 M	124.5 M
---------	----------------	-------	----------	-------------------	---------	---------

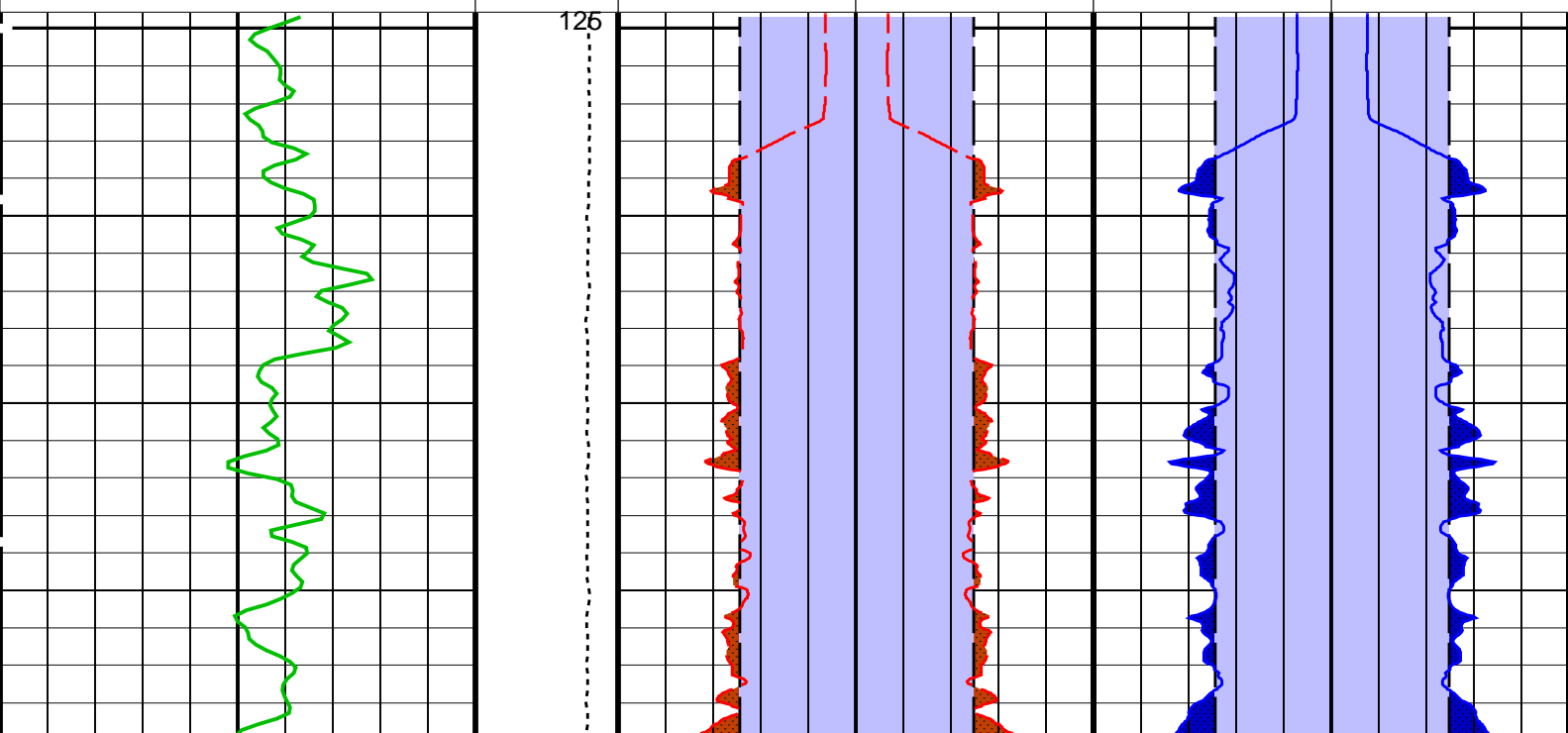
OP System Version: 19C0-187

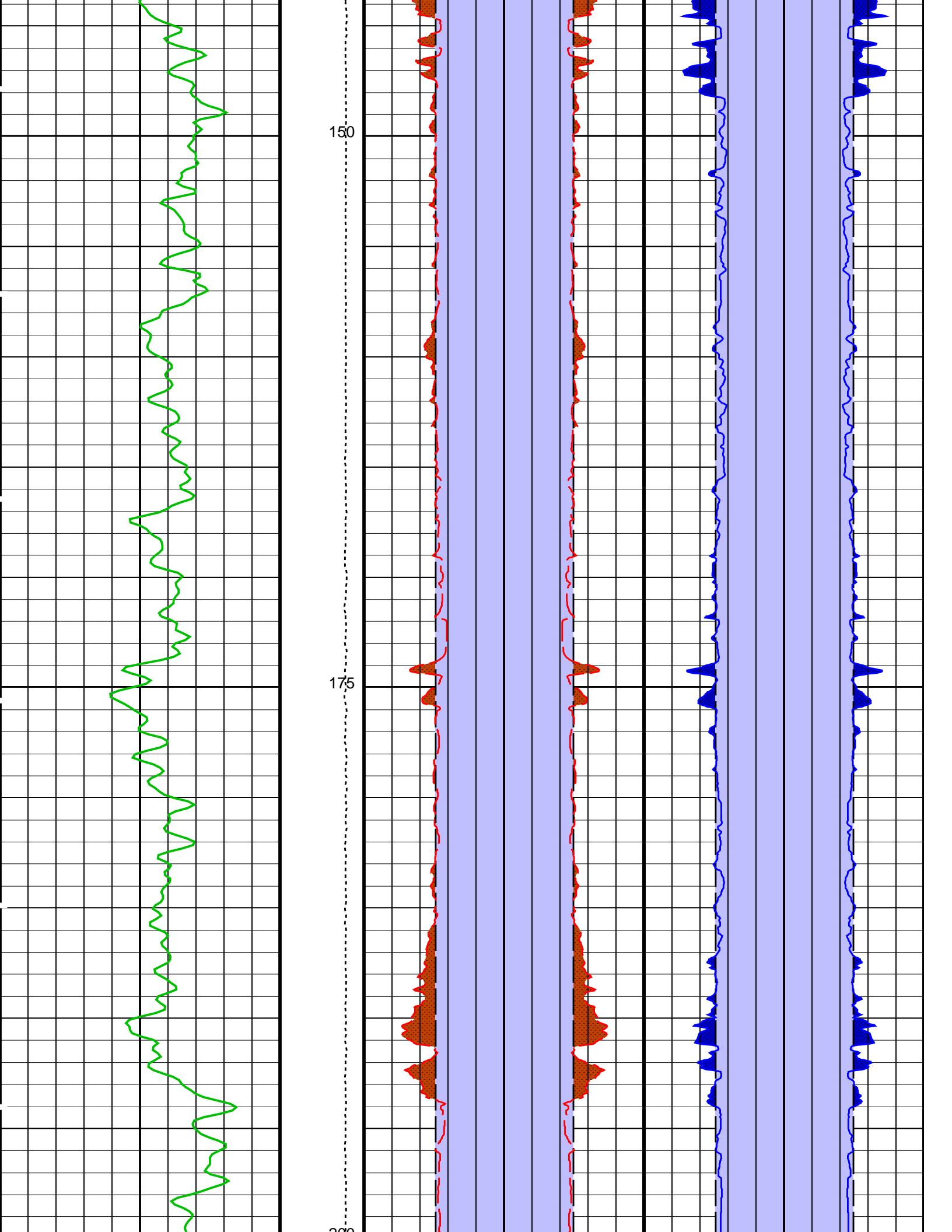
MEST-B	19C0-187	DTA-A	19C0-187
DSST-B	19C0-187	EDTC-B	19C0-187

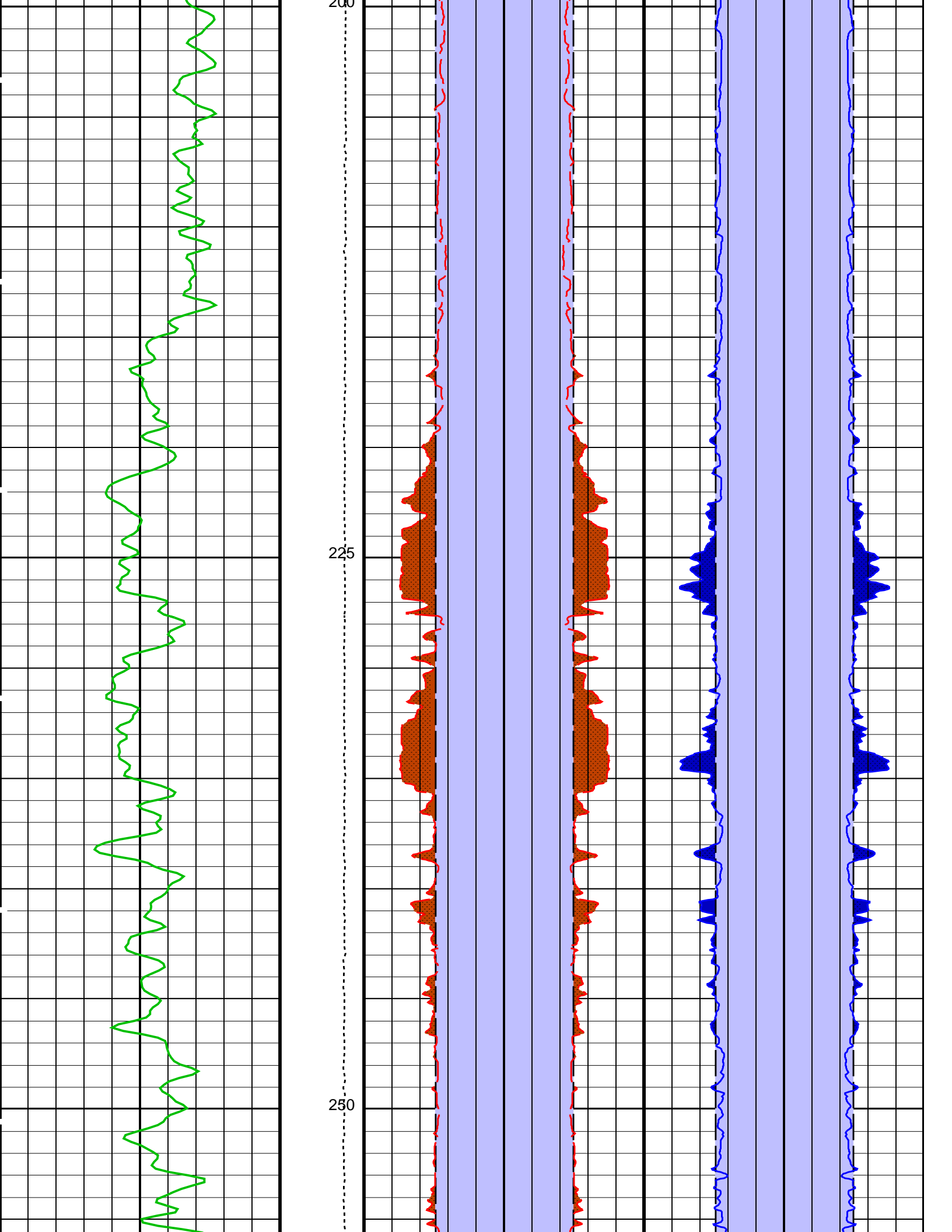
PIP SUMMARY

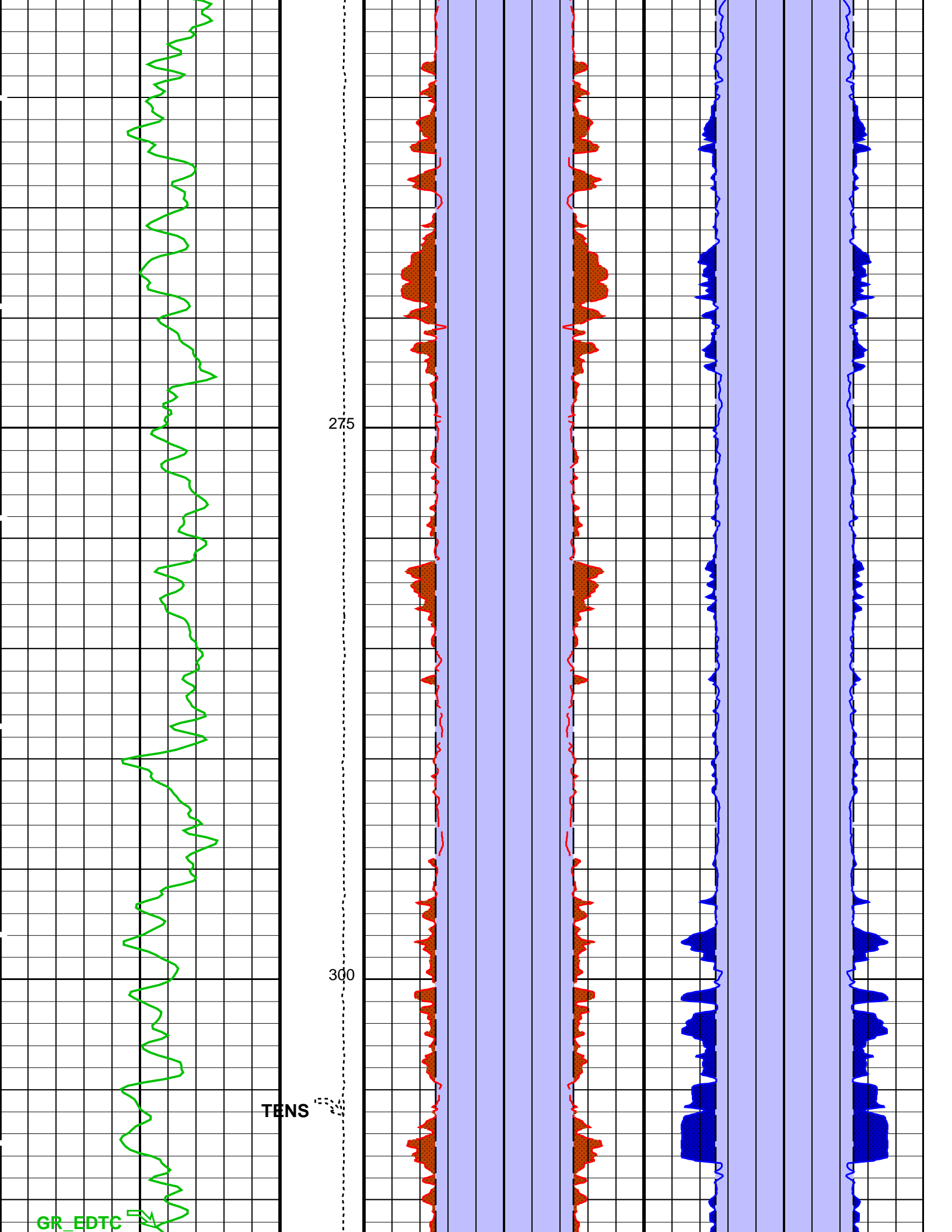
Time Mark Every 60 S

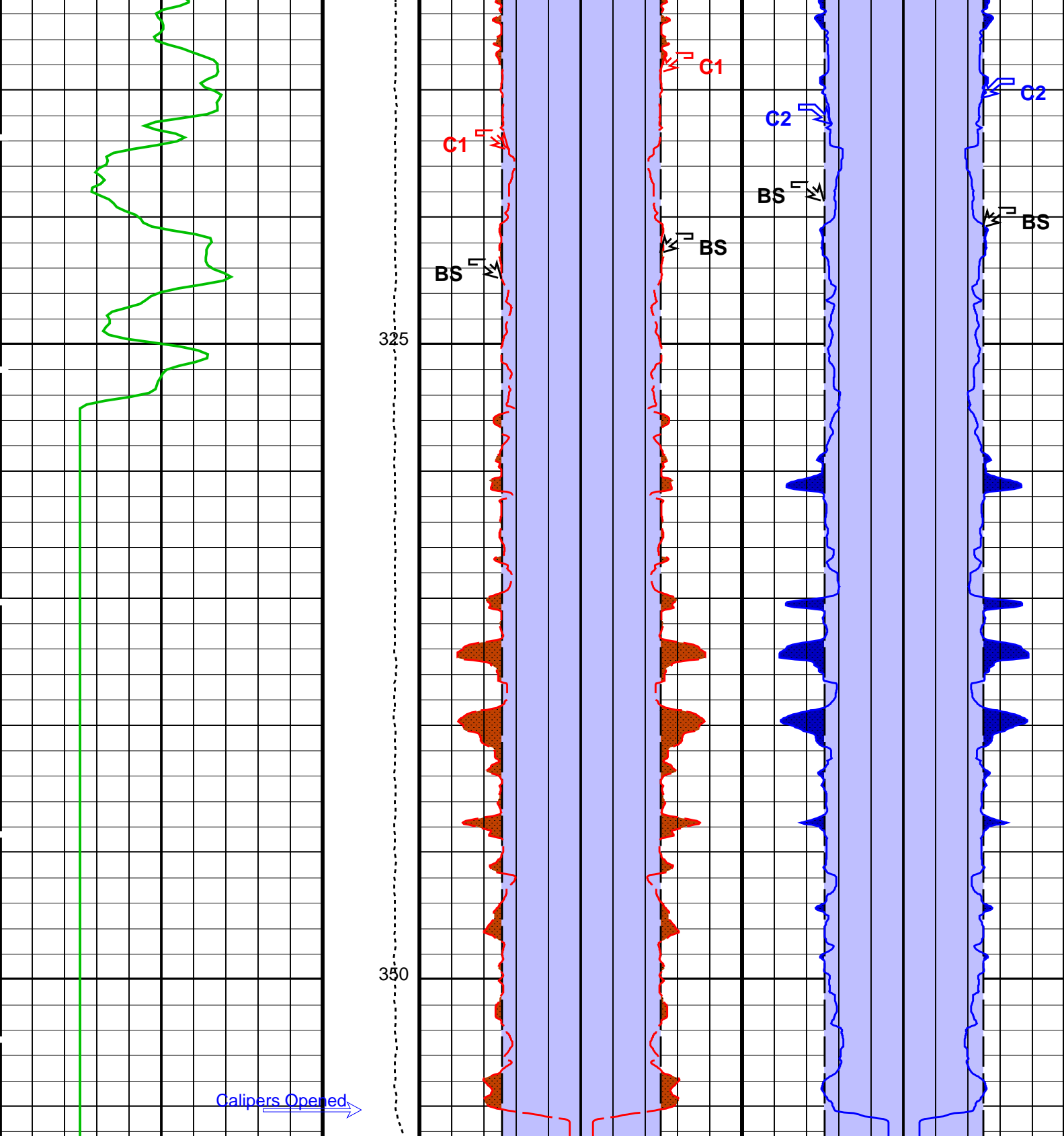
1st Pass, Sea Floor Depth Reference	Area From BS to BS_1		Area From BS_3 to BS_2		
	Area From C1 to BS	Area From BS_1 to C1_1	Area From C2 to BS_3	Area From BS_2 to C2_1	
	Caliper 1 (C1) 20 (IN) 0 0	Caliper 1 (C1) 0 0 (IN) 20	Caliper 2 (C2) 20 (IN) 0 0	Caliper 2 (C2) 0 0 (IN) 20	
Gamma Ray (GR_EDTC) (GAPI)	Tension (TENS) (LBF)	Bit Size (BS) 20 (IN) 0 0	Bit Size (BS) 0 0 (IN) 20	Bit Size (BS) 20 (IN) 0 0	Bit Size (BS) 0 0 (IN) 20
0	75	20	0	20	0











Gamma Ray (GR_EDTC) (GAPI)	Tension (TENS) (LBF)	Bit Size (BS) (IN)	Bit Size (BS) (IN)	Bit Size (BS) (IN)	Bit Size (BS) (IN)
0 75	10000 0	20 0 0	0 0 20 20	20 0 0	0 0 20 20

1st Pass, Sea Floor Depth Reference

Caliper 1 (C1) (IN)	Caliper 1 (C1) (IN)	Caliper 2 (C2) (IN)	Caliper 2 (C2) (IN)
20 0 0	0 0 20 20	20 0 0	0 0 20 20

Area From C1 to BS	Area From BS_1 to C1_1	Area From C2 to BS_3	Area From BS_2 to C2_1
-----------------------	------------------------------	-------------------------	------------------------------

Area From BS to BS_1	Area From BS_3 to BS_2
-------------------------	---------------------------

PIP SUMMARY

Time Mark Every 60 S

Parameters

DLIS Name	Description	Value
System and Miscellaneous		
BS	Bit Size	9.875 IN
DO	Depth Offset for Playback	-653.3 M
PP	Playback Processing	NORMAL

Format: BHP Vertical Scale: 1:200 Graphics File Created: 27-Dec-2011 03:56

OP System Version: 19C0-187

MEST-B	19C0-187	DTA-A	19C0-187
DSST-B	19C0-187	EDTC-B	19C0-187

Input DLIS Files

DEFAULT	FMS_DSI_024LUP	FN:37	PRODUCER	24-Dec-2011 07:05	1009.6 M	777.8 M
---------	----------------	-------	----------	-------------------	----------	---------

Output DLIS Files

DEFAULT	FMS_DSI_053PUP	FN:72	PRODUCER	27-Dec-2011 03:56
---------	----------------	-------	----------	-------------------

Calibration and Check Summary


Measurement	Nominal	Master	Before	After	Change	Limit	Units
Micro Electrical Scanner – B (Slim) Wellsite Calibration – Caliper Calibration							
Before: Calibration out of date 27-Nov-2011 1:38							
Caliper 1 Zero Measurement	11.88	N/A	11.99	N/A	N/A	N/A	IN
Caliper 2 Zero Measurement	11.88	N/A	12.02	N/A	N/A	N/A	IN
Caliper 1 Plus Measurement	15.19	N/A	15.16	N/A	N/A	N/A	IN
Caliper 2 Plus Measurement	15.19	N/A	15.32	N/A	N/A	N/A	IN
Micro Electrical Scanner – B (Slim) Wellsite Calibration – CROUZET ACCELEROMETER PROM HAS BEEN READ CORRECTLY							
Before: 24-Dec-2011 4:27							
TEMPERATURE REFERENCE :	N/A	N/A	20	N/A	N/A	N/A	DEGC
YEAR OF CALIBRATION :	N/A	N/A	99	N/A	N/A	N/A	
MONTH OF CALIBRATION :	N/A	N/A	3	N/A	N/A	N/A	
SERIAL NUMBER :	N/A	N/A	743	N/A	N/A	N/A	
Micro Electrical Scanner – B (Slim) Wellsite Calibration – CROUZET MAGNETOMETER PROM HAS BEEN READ CORRECTLY							
Before: 24-Dec-2011 4:27							
TEMPERATURE REFERENCE :	N/A	N/A	23	N/A	N/A	N/A	DEGC
YEAR OF CALIBRATION :	N/A	N/A	3	N/A	N/A	N/A	
MONTH OF CALIBRATION :	N/A	N/A	9	N/A	N/A	N/A	
SERIAL NUMBER :	N/A	N/A	507	N/A	N/A	N/A	
Enhanced DTS Cartridge Wellsite Calibration – EDTC Accelerometer Calibration							
Before: 17-Dec-2011 16:10							
EDTC Z-Axis Acceleration	9.810	N/A	9.825	N/A	N/A	N/A	M/S2
Enhanced DTS Cartridge Wellsite Calibration – Detector Calibration							
Before: Calibration out of date 26-Nov-2011 0:18							
Gamma Ray (Jig – Bkg)	163.8	N/A	163.8	N/A	N/A	14.89	GAPI
Gamma Ray (Calibrated)	164.0	N/A	164.0	N/A	N/A	15.00	GAPI

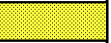


Micro Electrical Scanner – B (Slim) / Equipment Identification

Primary Equipment:		
MEST Sonde – B	MEDS – B	770
MEST Preamplifier Cartridge – AB	MEPC – AB	807
GPIT Cartridge – A	GPIC – A	840

MEST Acquisition Cartridge – A	MEAC – A	875
Auxiliary Equipment:		
MEST-B Preamplifier Cartridge Housing	MEPH – A	702
MEST Acquisition Cartridge Housing (Slim)	MEAH – B	726

Enhanced DTS Cartridge / Equipment Identification		
Primary Equipment:		
EDTC Gamma Ray Detector	EDTG – A/B	77693
Enhanced DTS Cartridge	EDTC – B	8529
Auxiliary Equipment:		
EDTC Housing	EDTH – B	8528

Enhanced DTS Cartridge Wellsite Calibration			
EDTC Accelerometer Calibration			
Phase	EDTC Z-Axis Acceleration	M/S2	Value
Before			9.825
	9.610 (Minimum)	9.810 (Nominal)	10.01 (Maximum)
Before: 17-Dec-2011 16:10			

Enhanced DTS Cartridge Wellsite Calibration											
Detector Calibration											
Phase	Gamma Ray Background	GAPI	Value	Phase	Gamma Ray (Jig – Bkg)	GAPI	Value	Phase	Gamma Ray (Calibrated)	GAPI	Value
Before			9.201	Before			163.8	Before			164.0
	0 (Minimum)	30.00 (Nominal)	120.0 (Maximum)		148.9 (Minimum)	163.8 (Nominal)	178.7 (Maximum)		149.0 (Minimum)	164.0 (Nominal)	179.0 (Maximum)
Before: Calibration out of date 26-Nov-2011 0:18											

Company:	Lamont Doherty	Schlumberger
Well:	Expedition 339, Site U1389GC-11A	
Field:	Mediterranean Outflow (Portugal)	
Rig:	JOIDES Resolution	
Ocean:	Atlantic	
	(FMS) Dual Axis Caliper Gamma Ray	