

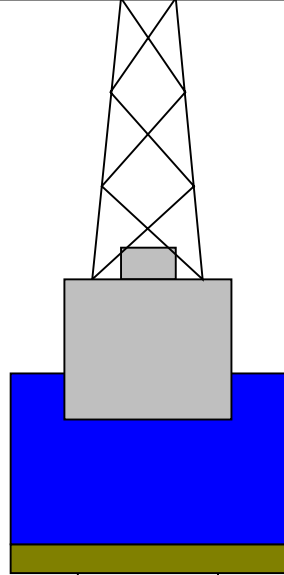
|                   |      |     |                |     |      |               |
|-------------------|------|-----|----------------|-----|------|---------------|
| Production String | (in) | (M) | Well Schematic | (M) | (in) | Casing String |
|                   | OD   | ID  |                | MD  | MD   |               |

Kelly Bushing Elevation  
Derrick Floor Elevation

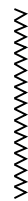
Mean Sea Level

-1005.1  
-1005.1

-994.1



4.1



0

3.80

Sea Floor

96

9.875

Open Hole

350

Total Depth

### Input DLIS Files

DEFAULT FMS\_DSI\_023LUP FN:34 PRODUCER 05-Jan-2012 07:56 1355.1 M 994.0 M

### Output DLIS Files

DEFAULT FMS\_DSI\_026PUP FN:38 PRODUCER 06-Jan-2012 08:18 350.1 M -11.0 M

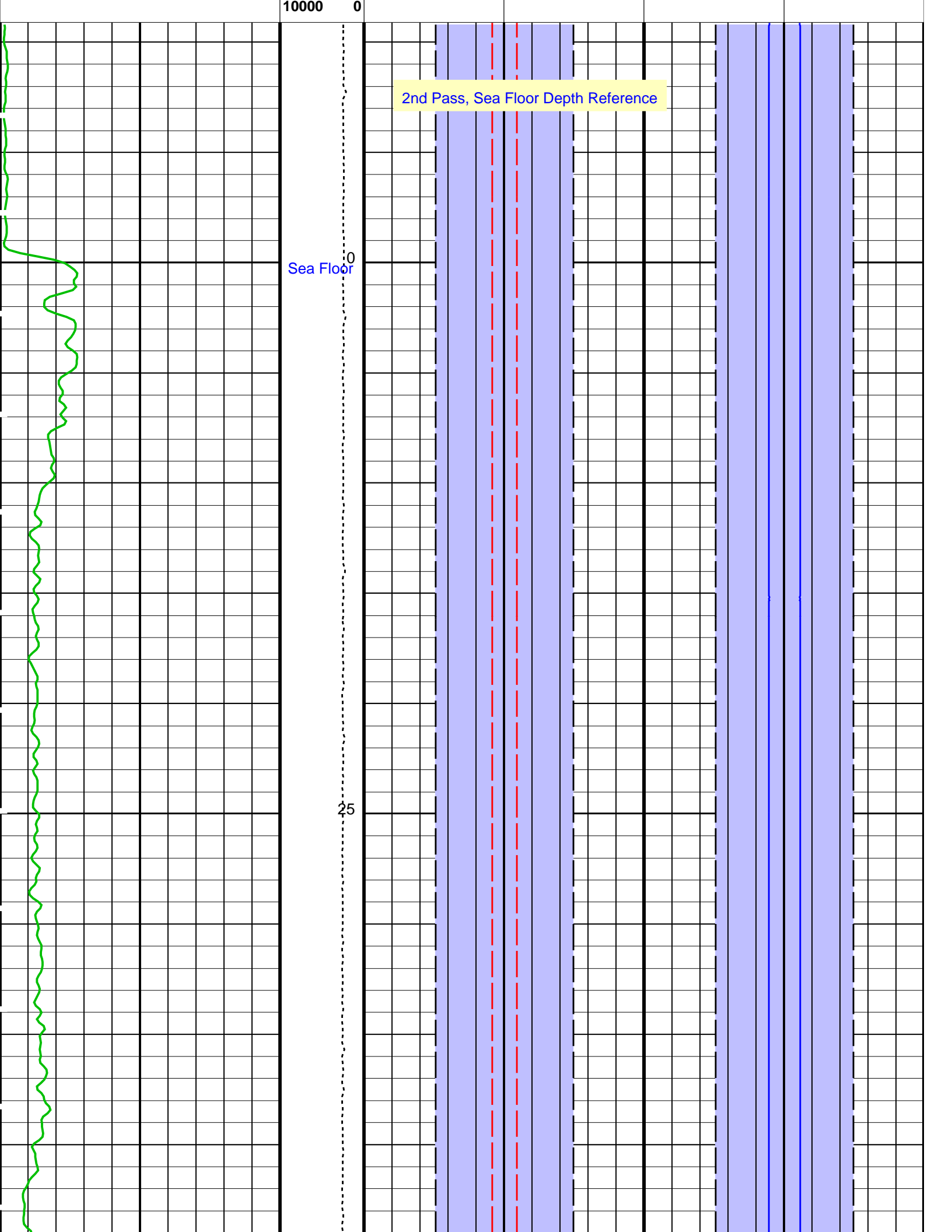
### OP System Version: 19C0-187

MEST-B 19C0-187 DTA-A 19C0-187  
 DSST-B 19C0-187 EDTC-B 19C0-187

#### PIP SUMMARY

Time Mark Every 60 S

|                     |                |  | Area From BS to BS_1 |                        | Area From BS_3 to BS_2 |               |                        |               |
|---------------------|----------------|--|----------------------|------------------------|------------------------|---------------|------------------------|---------------|
|                     |                |  | Area From C1 to BS   | Area From BS_1 to C1_1 | Area From C2 to BS_3   |               | Area From BS_2 to C2_1 |               |
|                     |                |  | Caliper 1 (C1)       | Caliper 1 (C1)         | Caliper 2 (C2)         |               | Caliper 2 (C2)         |               |
|                     |                |  | 20 (IN)              | 0 0 (IN) 20            | 20 (IN)                | 0 0 (IN)      | 20                     |               |
| Gamma Ray (GR_EDTC) | Tension (TENS) |  | Bit Size (BS)        | Bit Size (BS)          | Bit Size (BS)          | Bit Size (BS) | Bit Size (BS)          | Bit Size (BS) |
| 0 (GAPI) 75         | (LBF)          |  | 20 (IN)              | 0 0 (IN) 20            | 20 (IN)                | 0 0 (IN)      | 20                     |               |

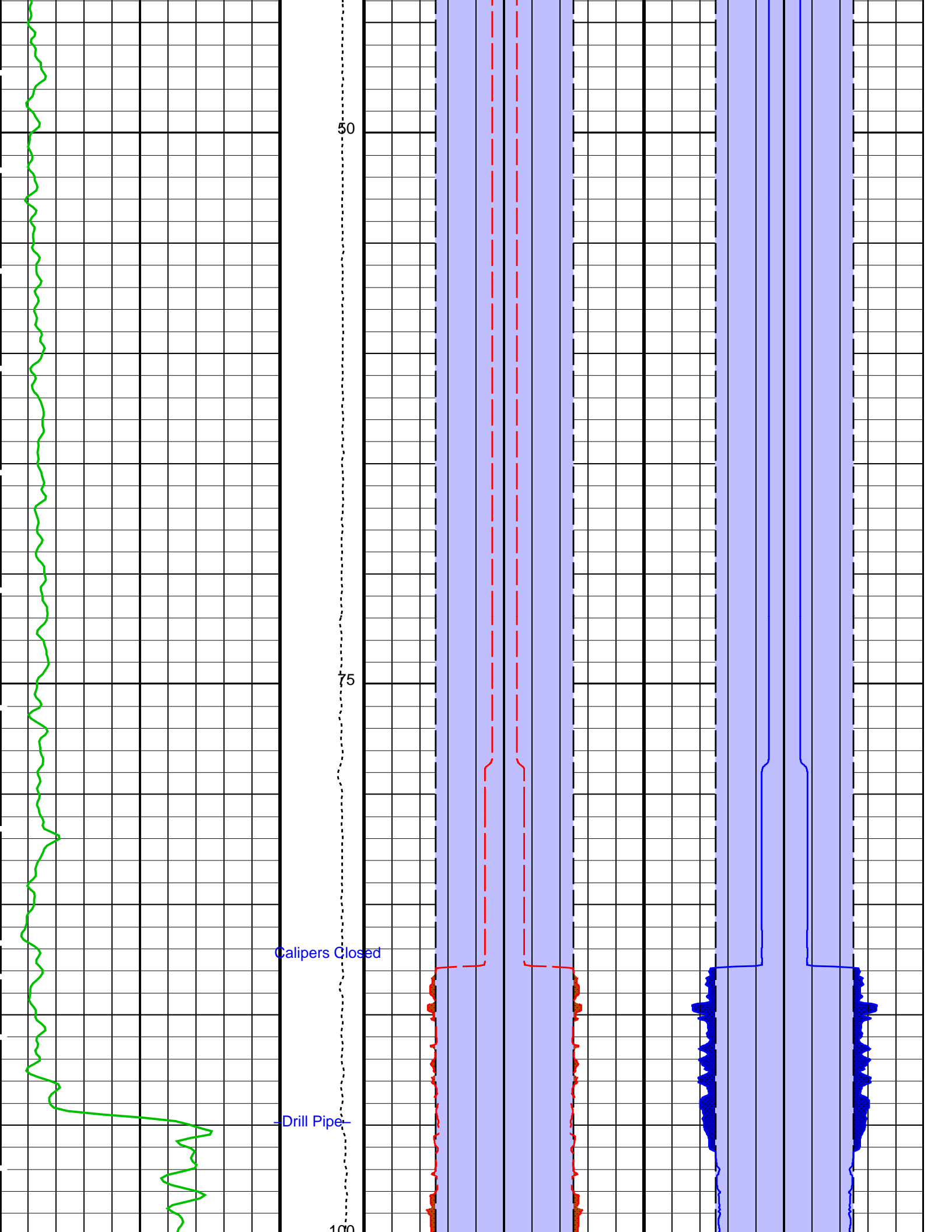


10000 0

2nd Pass, Sea Floor Depth Reference

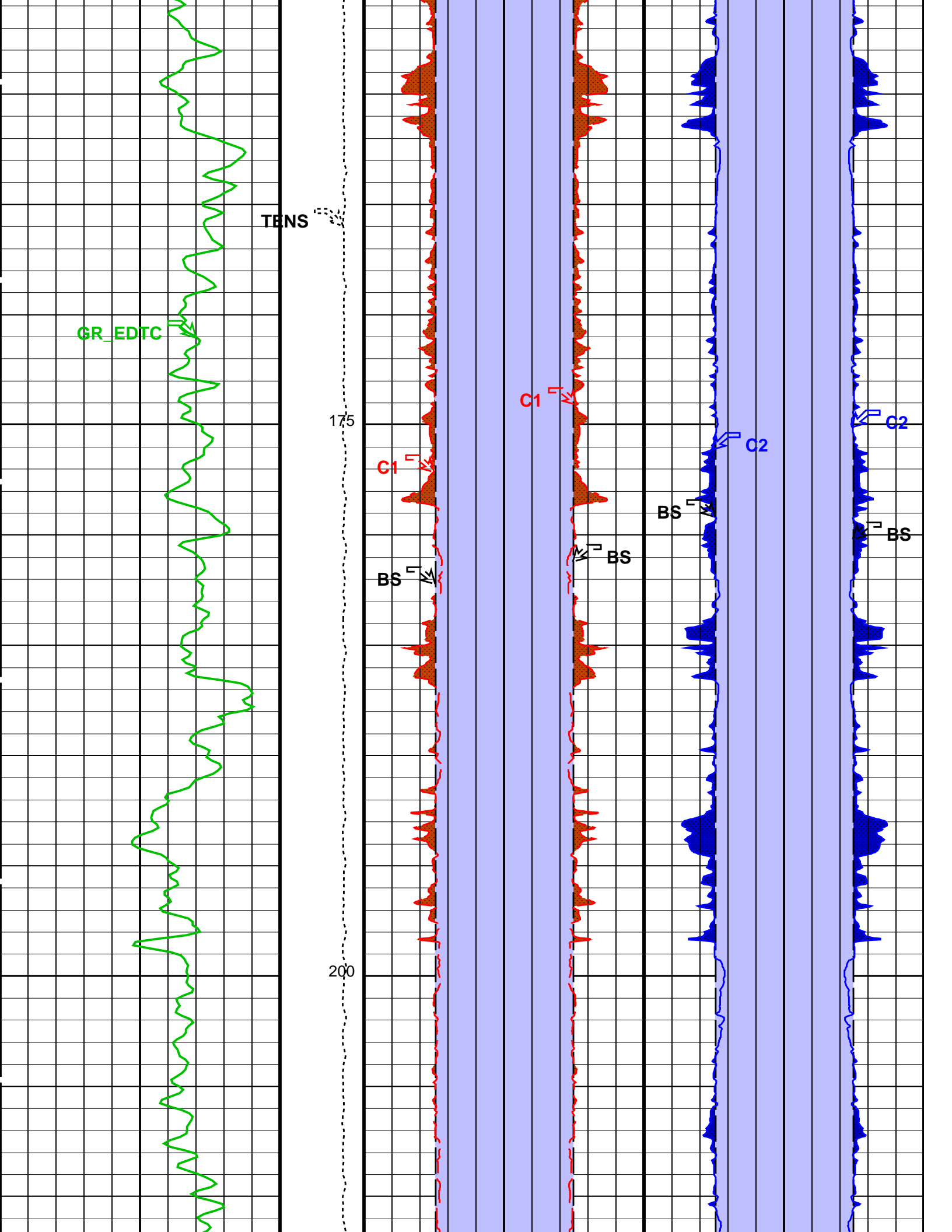
Sea Floor 0

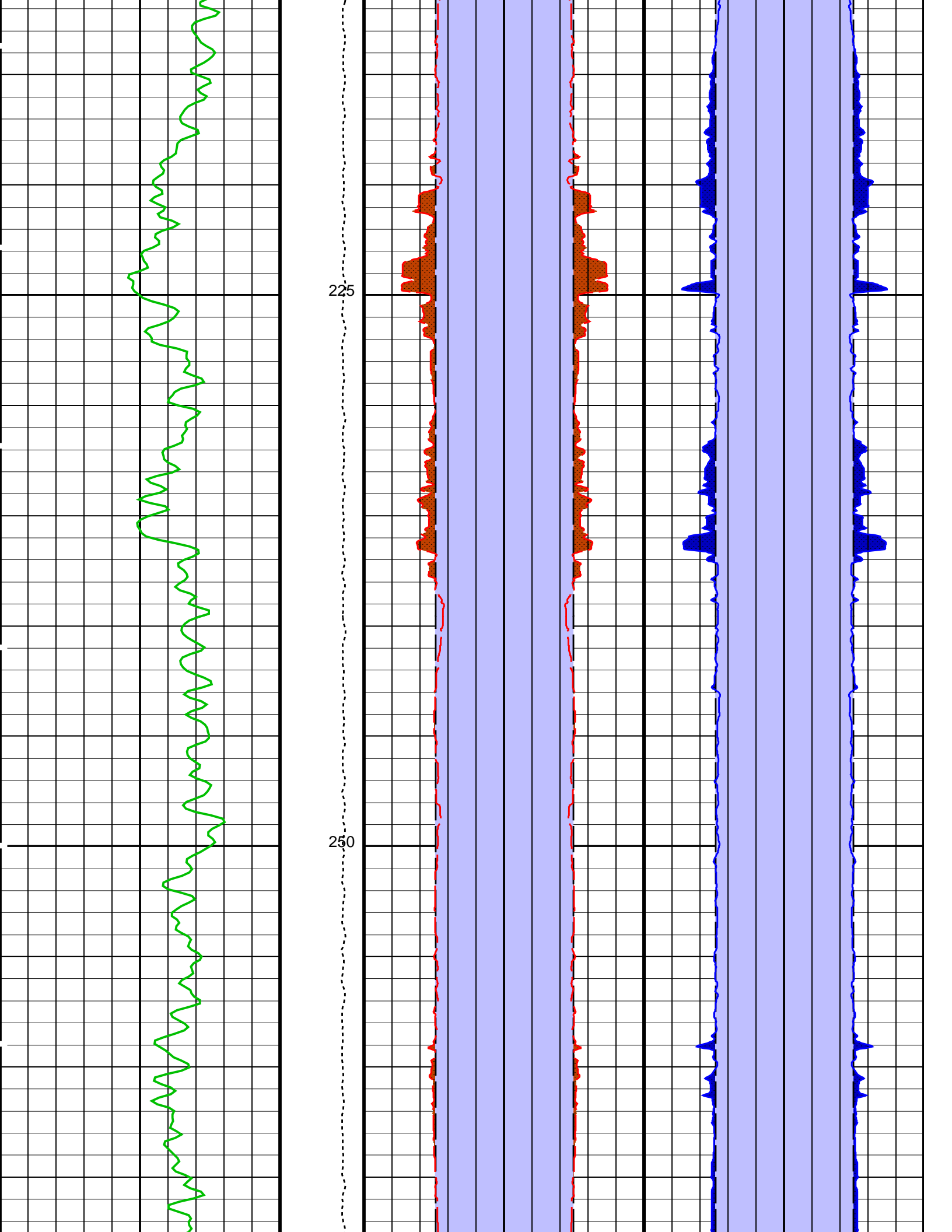
25

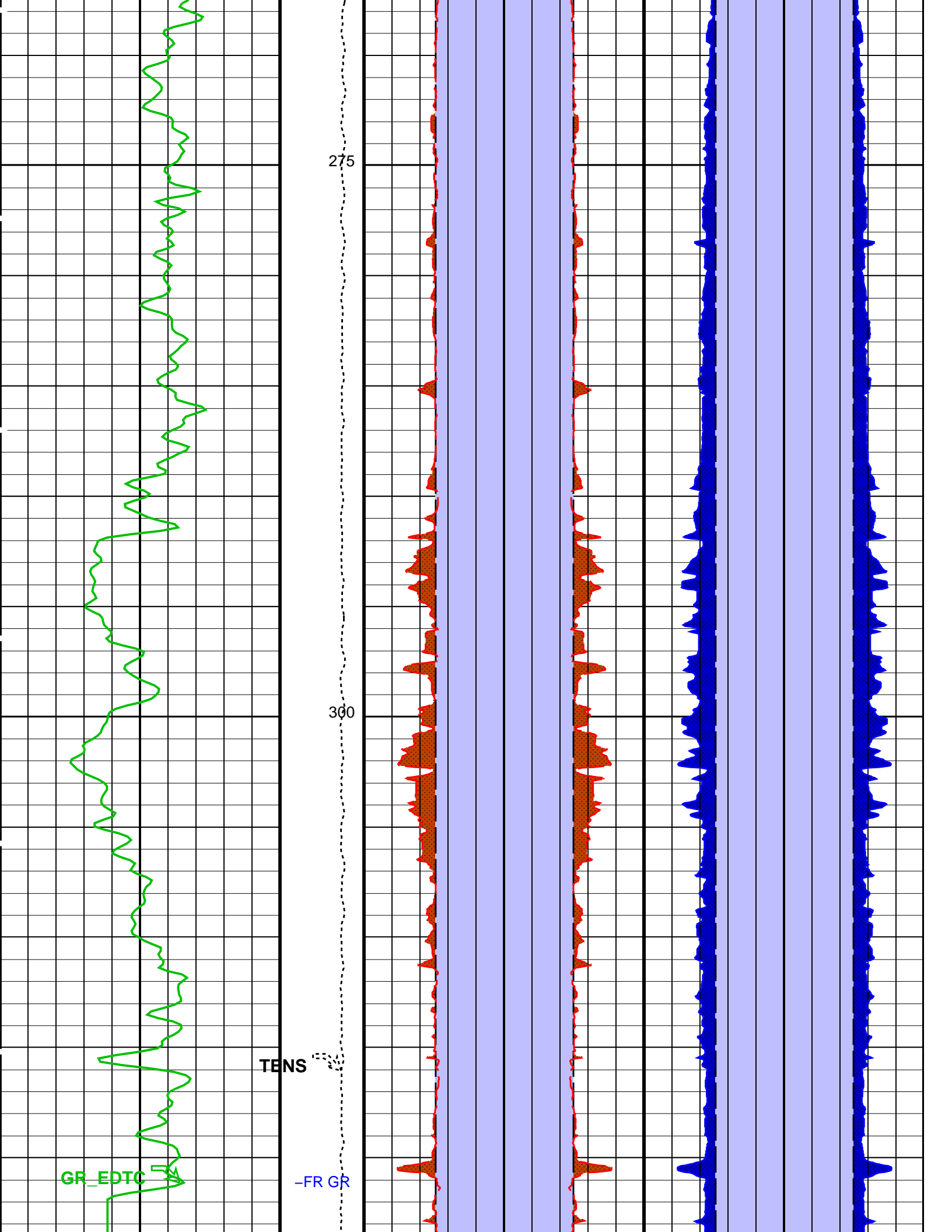


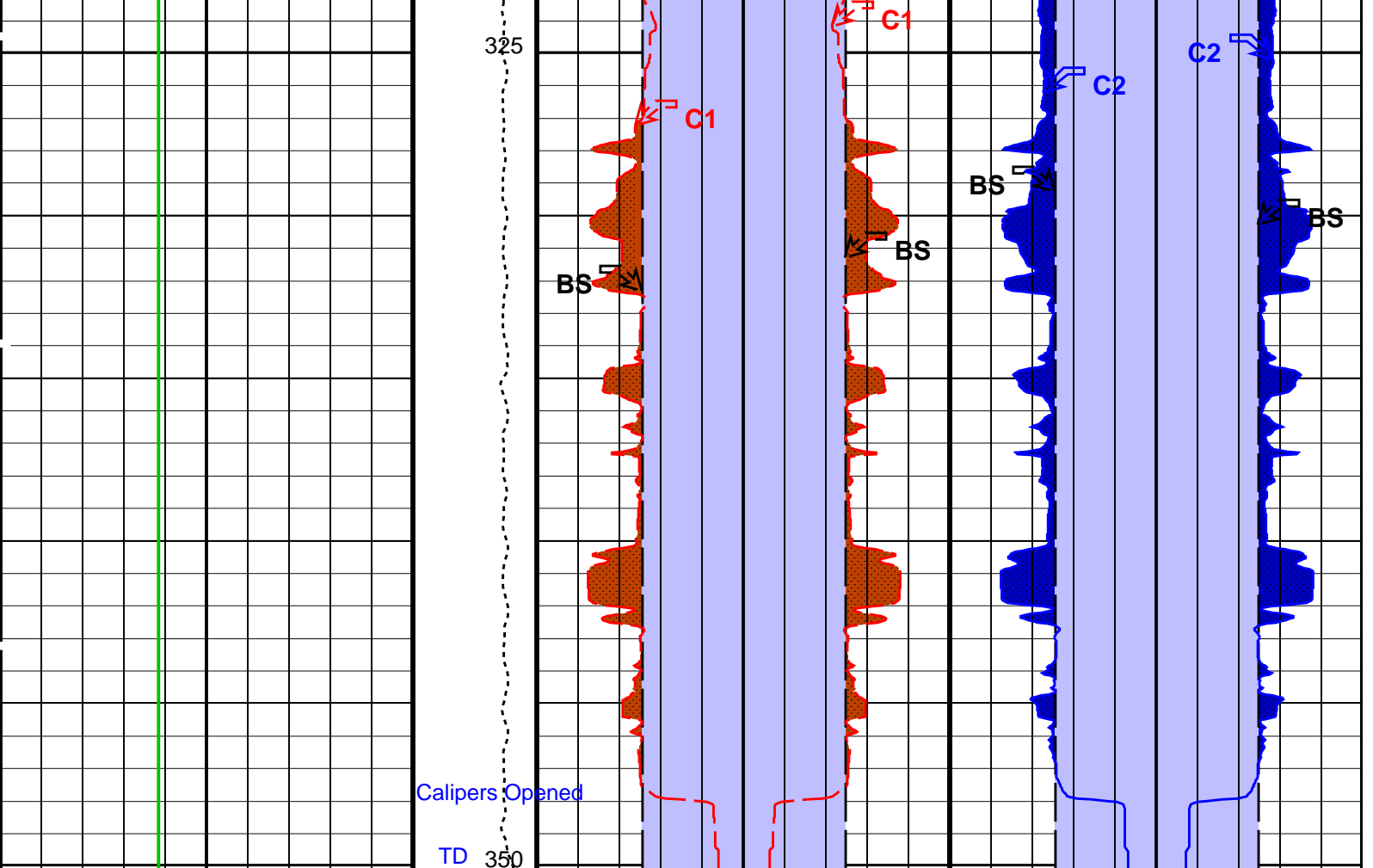












|                               |                            |                         |                              |                           |                              |
|-------------------------------|----------------------------|-------------------------|------------------------------|---------------------------|------------------------------|
| Gamma Ray (GR_EDTC)<br>(GAPI) | Tension<br>(TENS)<br>(LBF) | Bit Size (BS)<br>(IN)   | Bit Size (BS)<br>(IN)        | Bit Size (BS)<br>(IN)     | Bit Size (BS)<br>(IN)        |
| 0 75                          | 10000 0                    | 20 0 20                 | 0 0 20                       | 20 0 20                   | 0 0 20                       |
|                               |                            | Caliper 1 (C1)<br>(IN)  | Caliper 1 (C1)<br>(IN)       | Caliper 2 (C2)<br>(IN)    | Caliper 2 (C2)<br>(IN)       |
|                               |                            | Area<br>From C1 to BS   | Area<br>From BS_1 to<br>C1_1 | Area<br>From C2 to BS_3   | Area<br>From BS_2 to<br>C2_1 |
|                               |                            | Area<br>From BS to BS_1 |                              | Area<br>From BS_3 to BS_2 |                              |

2nd Pass, Sea Floor Depth Reference

PIP SUMMARY

Time Mark Every 60 S

Parameters

| DLIS Name                | Description               | Value     |
|--------------------------|---------------------------|-----------|
| System and Miscellaneous |                           |           |
| BS                       | Bit Size                  | 9.875 IN  |
| DO                       | Depth Offset for Playback | -1005.0 M |
| PP                       | Playback Processing       | NORMAL    |

Format: BHP Vertical Scale: 1:200 Graphics File Created: 06-Jan-2012 08:19

OP System Version: 19C0-187

|        |          |        |          |
|--------|----------|--------|----------|
| MEST-B | 19C0-187 | DTA-A  | 19C0-187 |
| DSST-B | 19C0-187 | EDTC-B | 19C0-187 |

Input DLIS Files

|         |                |       |          |                   |          |         |
|---------|----------------|-------|----------|-------------------|----------|---------|
| DEFAULT | FMS DSI 023LUP | FN:34 | PRODUCER | 05-Jan-2012 07:56 | 1355.1 M | 994.0 M |
|---------|----------------|-------|----------|-------------------|----------|---------|

# Output DLIS Files

DEFAULT FMS\_DSI\_026PUP

FN:38 PRODUCER 06-Jan-2012 08:18

## Input DLIS Files

DEFAULT FMS\_DSI\_022LUP

FN:32 PRODUCER 05-Jan-2012 07:19 1355.1 M 1132.5 M

## Output DLIS Files

DEFAULT FMS\_DSI\_025PUP

FN:37 PRODUCER 06-Jan-2012 08:17 350.1 M 127.7 M

## OP System Version: 19C0-187

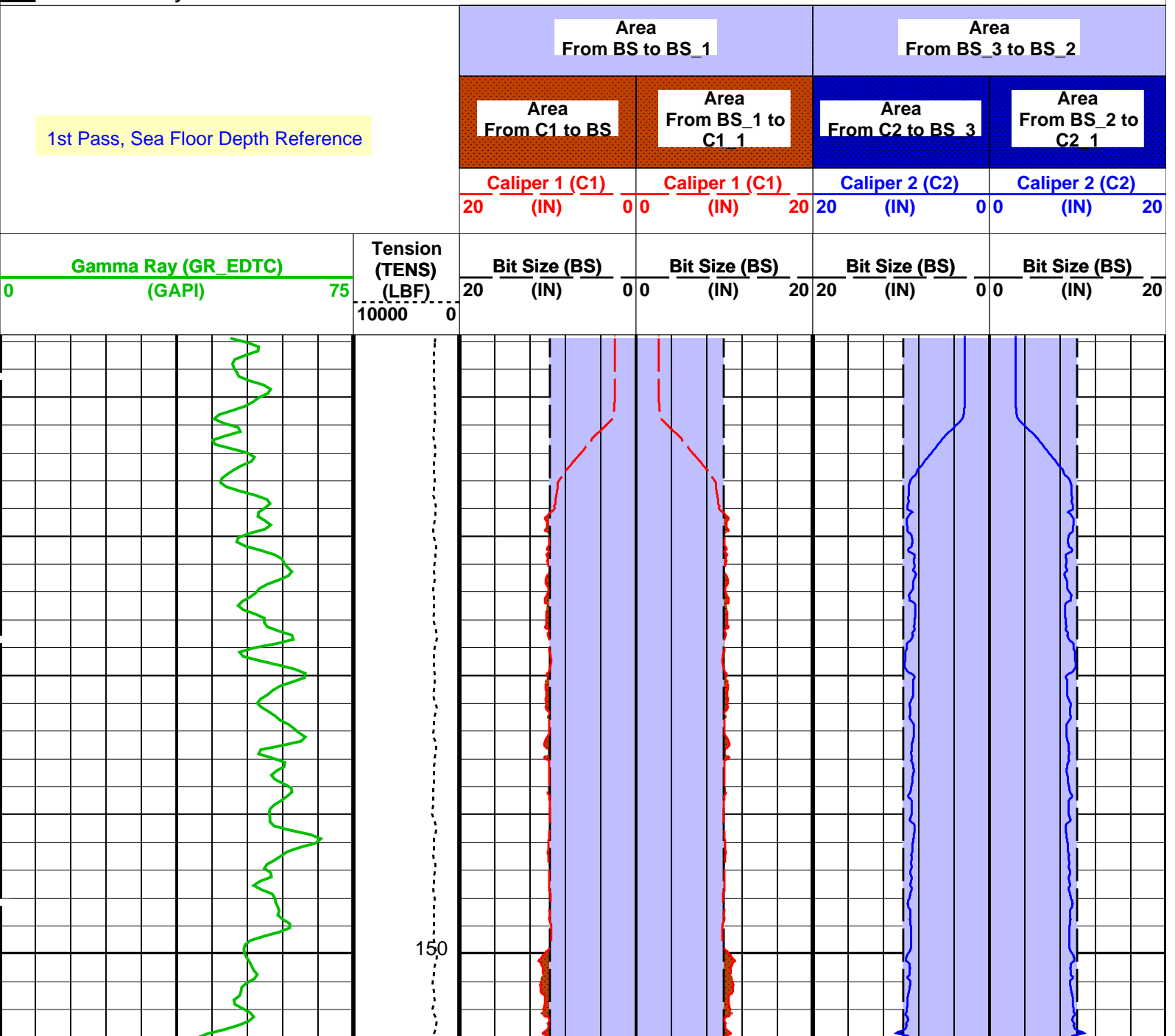
MEST-B 19C0-187  
DSST-B 19C0-187

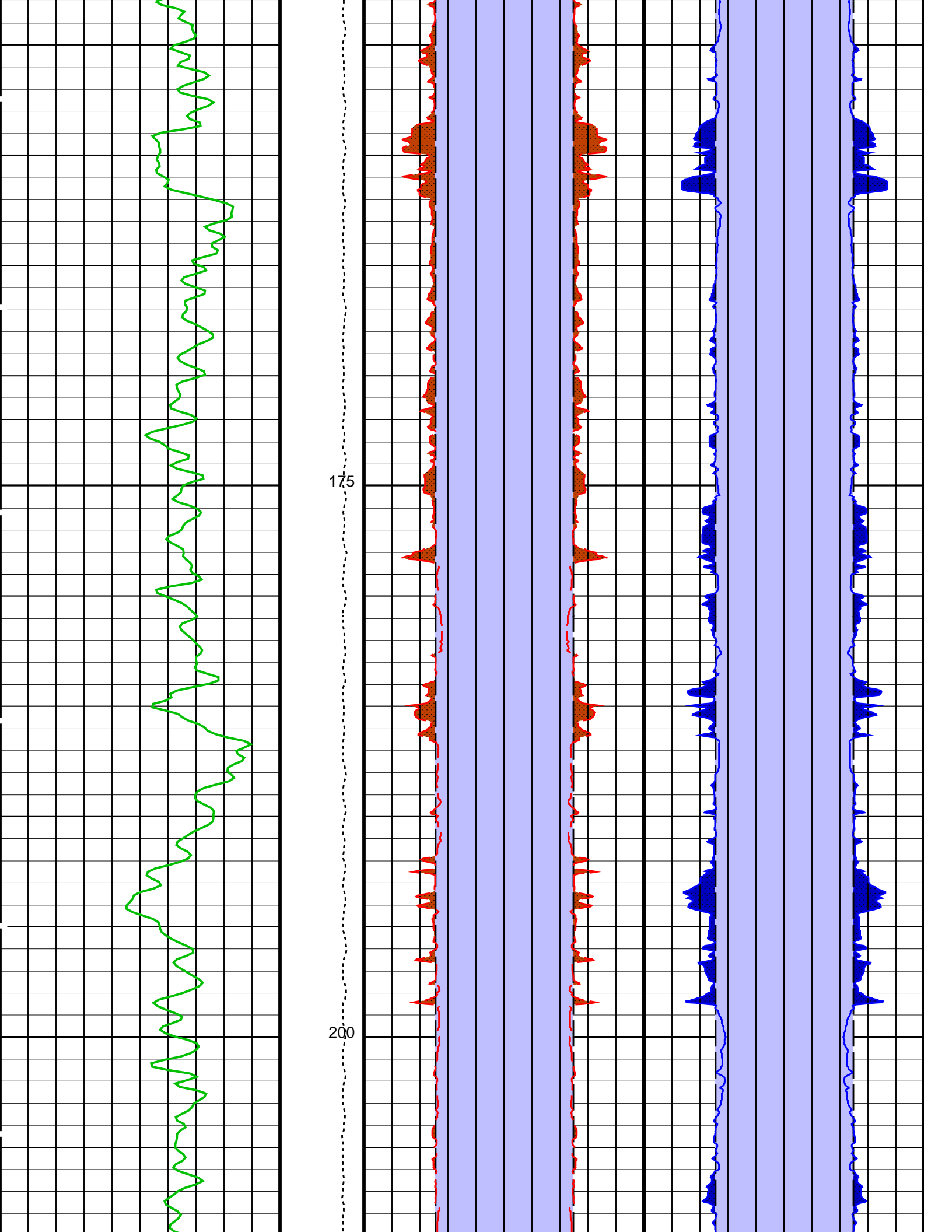
DTA-A 19C0-187  
EDTC-B 19C0-187

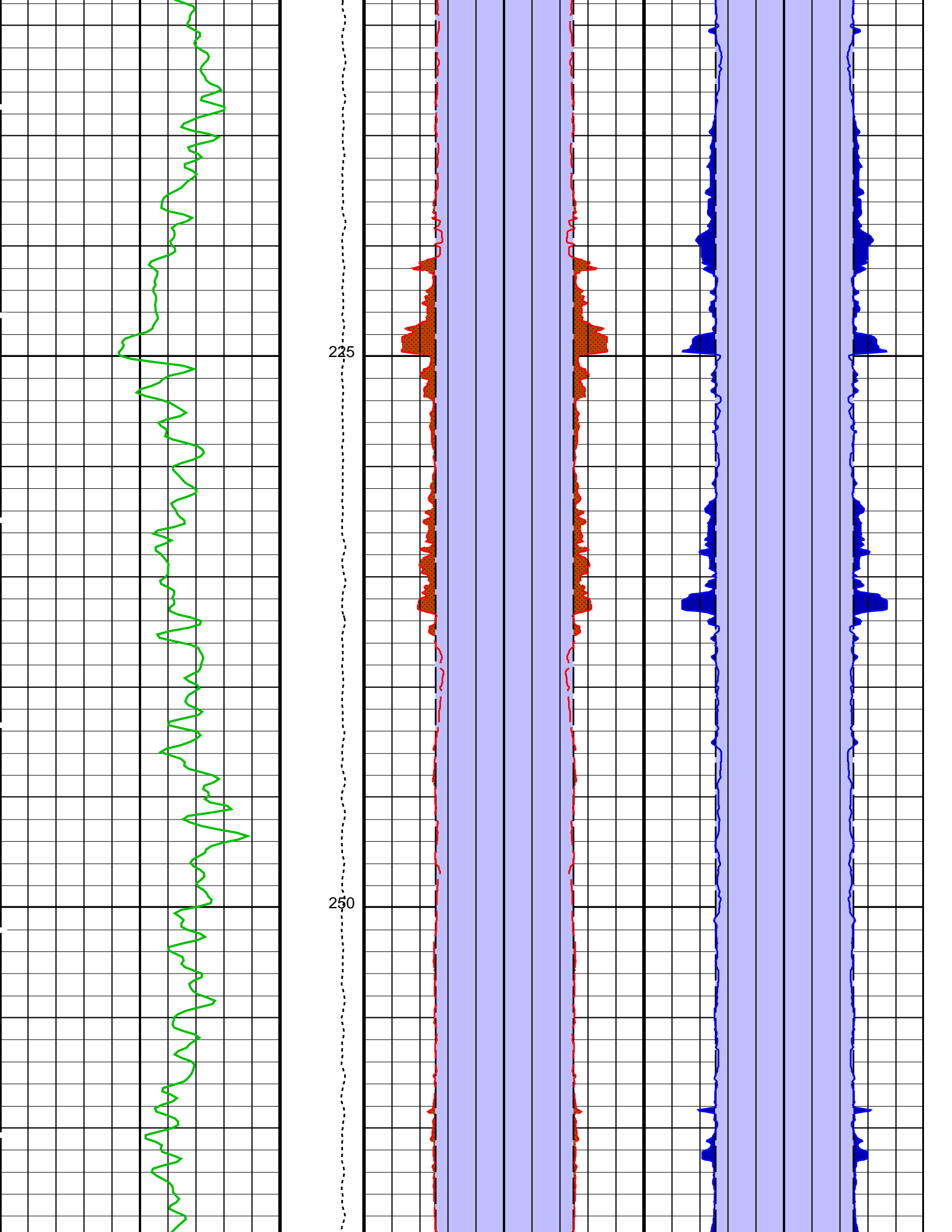
### PIP SUMMARY

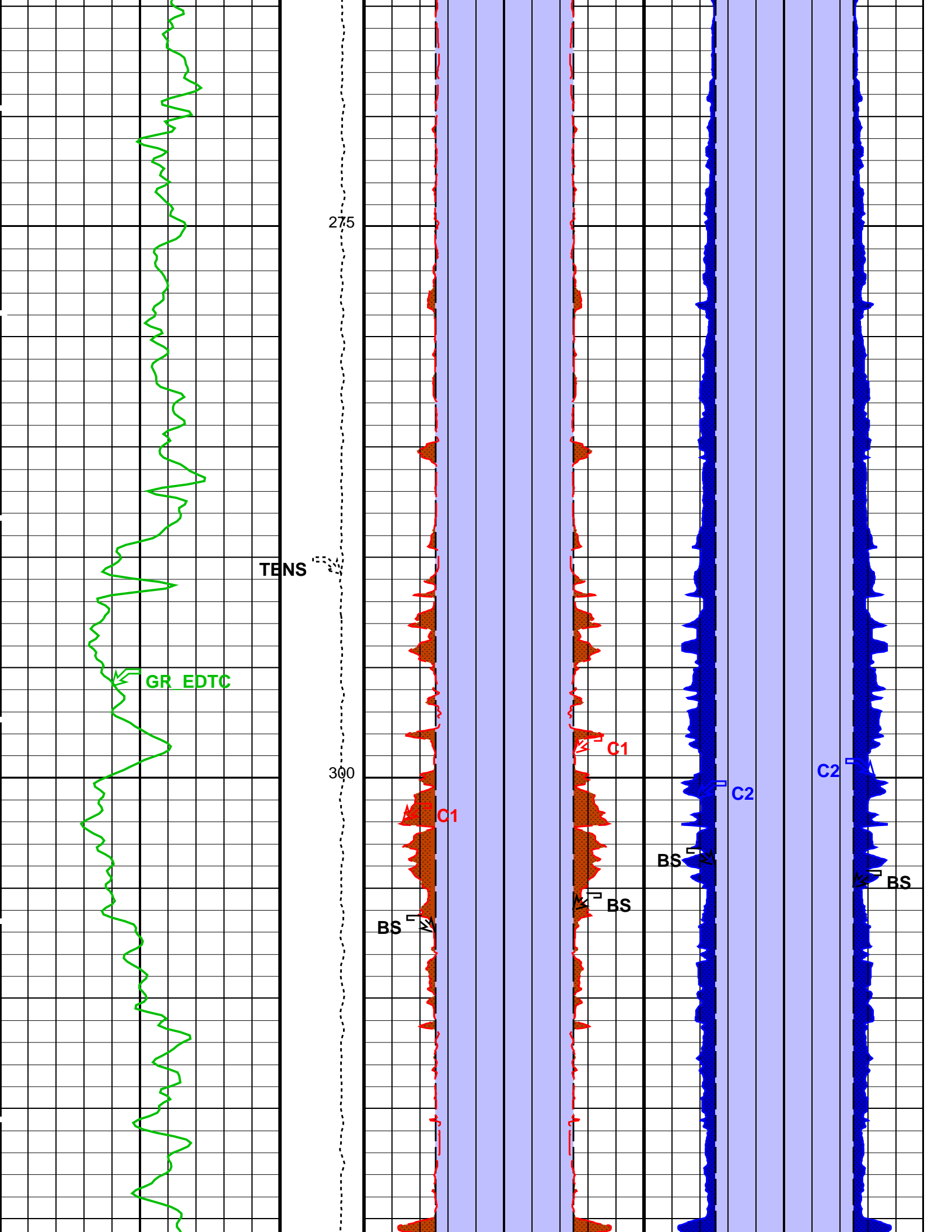
Time Mark Every 60 S

1st Pass, Sea Floor Depth Reference

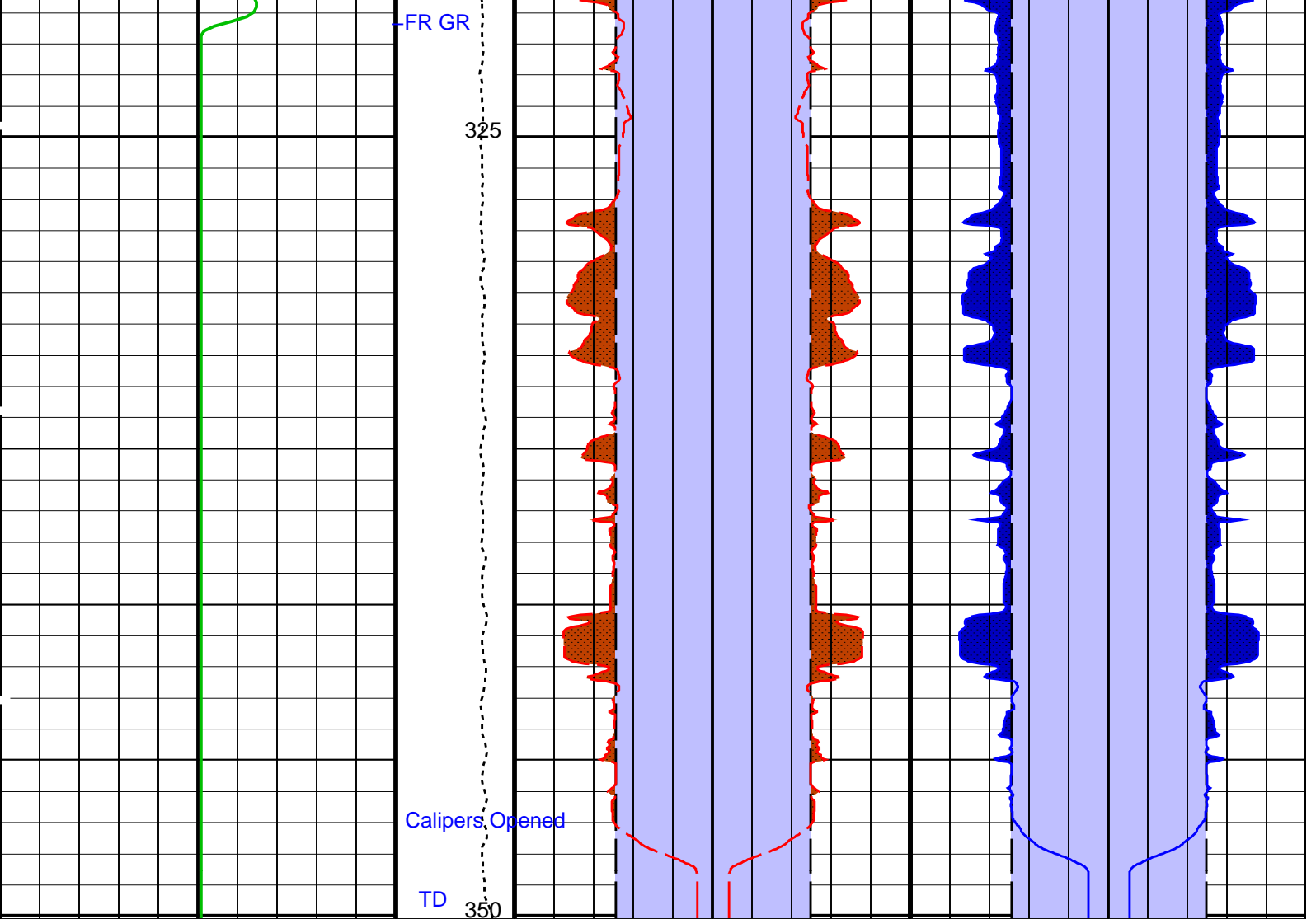












|                                     |                      |                      |                        |                        |                        |
|-------------------------------------|----------------------|----------------------|------------------------|------------------------|------------------------|
| Gamma Ray (GR_EDTC)<br>(GAPI)       | Tension (TENS) (LBF) | Bit Size (BS)        | Bit Size (BS)          | Bit Size (BS)          | Bit Size (BS)          |
|                                     |                      | 20 (IN)              | 0 0 (IN)               | 20 (IN)                | 0 0 (IN)               |
| 0                                   | 75                   | 20 (IN)              | 0 0 (IN)               | 20 (IN)                | 0 0 (IN)               |
|                                     | 10000                | Caliper 1 (C1)       | Caliper 1 (C1)         | Caliper 2 (C2)         | Caliper 2 (C2)         |
| 1st Pass, Sea Floor Depth Reference |                      | 20 (IN)              | 0 0 (IN)               | 20 (IN)                | 0 0 (IN)               |
|                                     |                      | Area From C1 to BS   | Area From BS_1 to C1_1 | Area From C2 to BS_3   | Area From BS_2 to C2_1 |
|                                     |                      | Area From BS to BS_1 |                        | Area From BS_3 to BS_2 |                        |

PIP SUMMARY

Time Mark Every 60 S

Parameters

| DLIS Name                | Description               | Value     |
|--------------------------|---------------------------|-----------|
| System and Miscellaneous |                           |           |
| BS                       | Bit Size                  | 9.875 IN  |
| DO                       | Depth Offset for Playback | -1005.0 M |
| PP                       | Playback Processing       | NORMAL    |

Format: BHP Vertical Scale: 1:200

Graphics File Created: 06-Jan-2012 08:17

OP System Version: 19C0-187

|        |          |        |          |
|--------|----------|--------|----------|
| MEST-B | 19C0-187 | DTA-A  | 19C0-187 |
| DSST-B | 19C0-187 | EDTC-B | 19C0-187 |

## Input DLIS Files

DEFAULT      FMS\_DSI\_022LUP      FN:32    PRODUCER    05-Jan-2012 07:19    1355.1 M      1132.5 M

## Output DLIS Files

DEFAULT      FMS\_DSI\_025PUP      FN:37    PRODUCER    06-Jan-2012 08:17

### Calibration and Check Summary

| Measurement  | Nominal | Master | Before | After | Change | Limit | Units |
|--|---------|--------|--------|-------|--------|-------|-------|
| <b>Micro Electrical Scanner – B (Slim) Wellsite Calibration – Caliper Calibration</b>                                |         |        |        |       |        |       |       |
| Before: Calibration out of date 27-Nov-2011 1:38   |         |        |        |       |        |       |       |
| Caliper 1 Zero Measurement   | 11.88   | N/A    | 11.99  | N/A   | N/A    | N/A   | IN    |
| Caliper 2 Zero Measurement   | 11.88   | N/A    | 12.02  | N/A   | N/A    | N/A   | IN    |
| Caliper 1 Plus Measurement   | 15.19   | N/A    | 15.16  | N/A   | N/A    | N/A   | IN    |
| Caliper 2 Plus Measurement   | 15.19   | N/A    | 15.32  | N/A   | N/A    | N/A   | IN    |
| <b>Micro Electrical Scanner – B (Slim) Wellsite Calibration – CROUZET ACCELEROMETER</b> PROM HAS BEEN READ CORRECTLY |         |        |        |       |        |       |       |
| Before: 5-Jan-2012 5:37  |         |        |        |       |        |       |       |
| TEMPERATURE REFERENCE :  | N/A     | N/A    | 20     | N/A   | N/A    | N/A   | DEGC  |
| YEAR OF CALIBRATION :  | N/A     | N/A    | 99     | N/A   | N/A    | N/A   |       |
| MONTH OF CALIBRATION :   | N/A     | N/A    | 3      | N/A   | N/A    | N/A   |       |
| SERIAL NUMBER :  | N/A     | N/A    | 743    | N/A   | N/A    | N/A   |       |
| <b>Micro Electrical Scanner – B (Slim) Wellsite Calibration – CROUZET MAGNETOMETER</b> PROM HAS BEEN READ CORRECTLY  |         |        |        |       |        |       |       |
| Before: 5-Jan-2012 5:37  |         |        |        |       |        |       |       |
| TEMPERATURE REFERENCE :  | N/A     | N/A    | 23     | N/A   | N/A    | N/A   | DEGC  |
| YEAR OF CALIBRATION :  | N/A     | N/A    | 3      | N/A   | N/A    | N/A   |       |
| MONTH OF CALIBRATION :   | N/A     | N/A    | 9      | N/A   | N/A    | N/A   |       |
| SERIAL NUMBER :  | N/A     | N/A    | 507    | N/A   | N/A    | N/A   |       |
| <b>Enhanced DTS Cartridge Wellsite Calibration – EDTC Accelerometer Calibration</b>                                  |         |        |        |       |        |       |       |
| Before: 2-Jan-2012 1:11  |         |        |        |       |        |       |       |
| EDTC Z-Axis Acceleration   | 9.810   | N/A    | 9.755  | N/A   | N/A    | N/A   | M/S2  |
| <b>Enhanced DTS Cartridge Wellsite Calibration – Detector Calibration</b>  |         |        |        |       |        |       |       |
| Before: 27-Dec-2011 9:12   |         |        |        |       |        |       |       |
| Gamma Ray (Jig – Bkg)  | 160.1   | N/A    | 160.1  | N/A   | N/A    | 14.56 | GAPI  |
| Gamma Ray (Calibrated)   | 164.0   | N/A    | 164.0  | N/A   | N/A    | 15.00 | GAPI  |

### Micro Electrical Scanner – B (Slim) / Equipment Identification

|   |           |     |
|---|-----------|-----|
| <b>Primary Equipment:</b>                 |           |     |
| MEST Sonde – B                            | MEDS – B  | 770 |
| MEST Preamplifier Cartridge – AB          | MEPC – AB | 807 |
| GPIT Cartridge – AC                       | GPIC – AC |     |
| MEST Acquisition Cartridge – A            | MEAC – A  | 875 |
| <b>Auxiliary Equipment:</b>               |           |     |
| MEST-B Preamplifier Cartridge Housing     | MEPH – A  | 702 |
| MEST Acquisition Cartridge Housing (Slim) | MEAH – B  | 726 |

### Enhanced DTS Cartridge / Equipment Identification

|                             |            |      |
|-----------------------------|------------|------|
| <b>Primary Equipment:</b>   |            |      |
| EDTC Gamma Ray Detector     | EDTG – A/B | 8305 |
| Enhanced DTS Cartridge      | EDTC – B   | 8317 |
| <b>Auxiliary Equipment:</b> |            |      |
| EDTC Housing                | EDTH – B   | 8303 |

#### Enhanced DTS Cartridge Wellsite Calibration

##### EDTC Accelerometer Calibration

| Phase | EDTC Z-Axis Acceleration, M/S2 | Value |
|-------|--------------------------------|-------|
|       |                                |       |

| Phase  | EDT02 Axis Acceleration m/s <sup>2</sup> |                    | Value              |
|--------|--|--------------------|--------------------|
| Before |  |                    | 9.755              |
|        | 9.610<br>(Minimum)                       | 9.810<br>(Nominal) | 10.01<br>(Maximum) |

Before: 2-Jan-2012 1:11

| Enhanced DTS Cartridge Wellsite Calibration |                           |                    |                    |        |                            |                    |                    |        |                             |                    |                    |
|---|---------------------------|--------------------|--------------------|--------|----------------------------|--------------------|--------------------|--------|-----------------------------|--------------------|--------------------|
| Detector Calibration                        |                           |                    |                    |        |                            |                    |                    |        |                             |                    |                    |
| Phase                                       | Gamma Ray Background GAPI |                    | Value              | Phase  | Gamma Ray (Jig - Bkg) GAPI |                    | Value              | Phase  | Gamma Ray (Calibrated) GAPI |                    | Value              |
| Before                                      |                           |                    | 6.619              | Before |                            |                    | 160.1              | Before |                             |                    | 164.0              |
|   | 0<br>(Minimum)            | 30.00<br>(Nominal) | 120.0<br>(Maximum) |        | 145.6<br>(Minimum)         | 160.1<br>(Nominal) | 174.7<br>(Maximum) |        | 149.0<br>(Minimum)          | 164.0<br>(Nominal) | 179.0<br>(Maximum) |

Before: 27-Dec-2011 9:12

Company: **Lamont Doherty**

**Schlumberger**

Well: **Expedition 339, Site U1390 GC-02B**

Field: **Mediterranean Outflow (Portugal)**

Rig: **JOIDES Resolution**

Ocean: **Atlantic**

FMS Dual Axis Caliper

Dipole Shear Sonic

Gamma Ray