



**DISCLAIMER**  
 THE USE OF AND RELIANCE UPON THIS RECORDED-DATA BY THE HEREIN NAMED COMPANY (AND ANY OF ITS AFFILIATES, PARTNERS, REPRESENTATIVES, AGENTS, CONSULTANTS AND EMPLOYEES) IS SUBJECT TO THE TERMS AND CONDITIONS AGREED UPON BETWEEN SCHLUMBERGER AND THE COMPANY, INCLUDING: (a) RESTRICTIONS ON USE OF THE RECORDED-DATA; (b) DISCLAIMERS AND WAIVERS OF WARRANTIES AND REPRESENTATIONS REGARDING COMPANY'S USE OF AND RELIANCE UPON THE RECORDED-DATA; AND (c) CUSTOMER'S FULL AND SOLE RESPONSIBILITY FOR ANY INFERENCE DRAWN OR DECISION MADE IN CONNECTION WITH THE USE OF THIS RECORDED-DATA.

**OTHER SERVICES1**  
 OS1: FMS/DSI  
 OS2: HNGS  
 OS3: HLDS  
 OS4: HRLA  
 OS5:

**OTHER SERVICES2**  
 OS1:  
 OS2:  
 OS3:  
 OS4:  
 OS5:

**REMARKS: RUN NUMBER 1**  
 Hole WI-01B Hole C was drilled with a 9 7/8" RCB bit to TDD of 671.5 mbsf.  
 This log originally acquired in measured depth from rig floor but played back for sea floor reference.  
  
 The original logs were acquired with bit size as the hole size assumption.  
  
 All logs recorded via wireline thru 5-5.5" drillpipe and RCB coring BHA consisting of a bit release sub, Kinley sub, drill collars. Drill bit dropped prior to logging.

**REMARKS: RUN NUMBER 2**

RUN 1		
SERVICE ORDER #:		
PROGRAM VERSION:	19C0-187	
FLUID LEVEL:		
LOGGED INTERVAL	START	STOP

RUN 2		
SERVICE ORDER #:		
PROGRAM VERSION:		
FLUID LEVEL:		
LOGGED INTERVAL	START	STOP

## EQUIPMENT DESCRIPTION



RUN 1

**SURFACE EQUIPMENT**

WITM (EDTS)-A 1

RUN 2

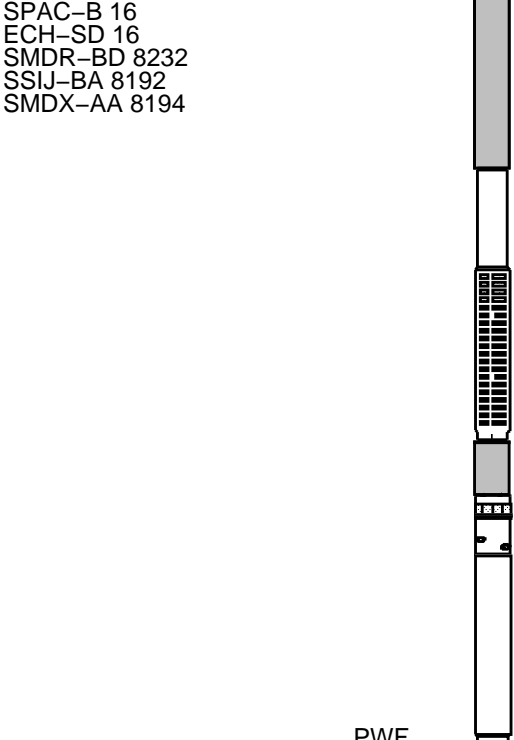
**DOWNHOLE EQUIPMENT**

LEH-QT	MDSB_EDTC			31.88
LEH-QT 301	Mud Tempe		30.99	
	CTEM		29.92	
EDTC-B	Gamma Ray		29.35	30.99
EDTH-B 8303	EFTB DIAG			
EDTC-B 8317	TelStatus			
EDTG-A/B 8305	EDTCB Ele		29.01	

AH-MCD 29.01



DSST-B 26.73



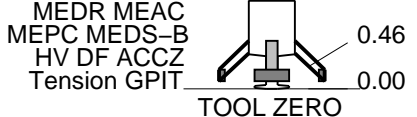
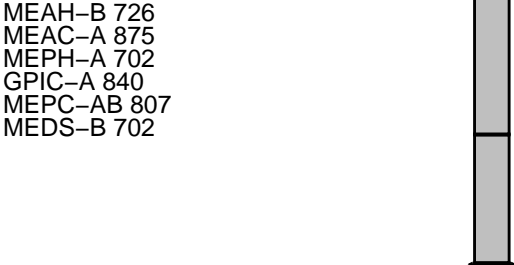
AH-MCD 11.18



DTA-A 8.90



MEST-B 7.68



PWF 11.18

MAXIMUM STRING DIAMETER 4.50 IN  
MEASUREMENTS RELATIVE TO TOOL ZERO  
ALL LENGTHS IN METERS

Production String	(in)	(M)	Well Schematic	(M)	(in)	Casing String
	OD	ID		MD	MD	

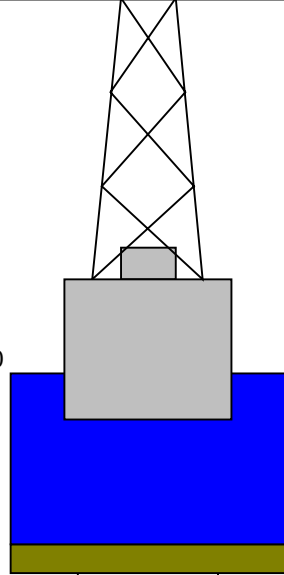
Kelly Bushing Elevation  
Derrick Floor Elevation

Mean Sea Level

-1085.0

-1085.0

-1074.0



4.1



0

3.80

Sea Floor

98.9

9.875

Open Hole

671.5

Total Depth

### Input DLIS Files

DEFAULT FMS\_DSI\_030LUP FN:42 PRODUCER 15-Jan-2012 15:52 1399.6 M 1172.9 M

### Output DLIS Files

DEFAULT FMS\_DSI\_032PUP FN:46 PRODUCER 16-Jan-2012 07:14 314.7 M 87.9 M

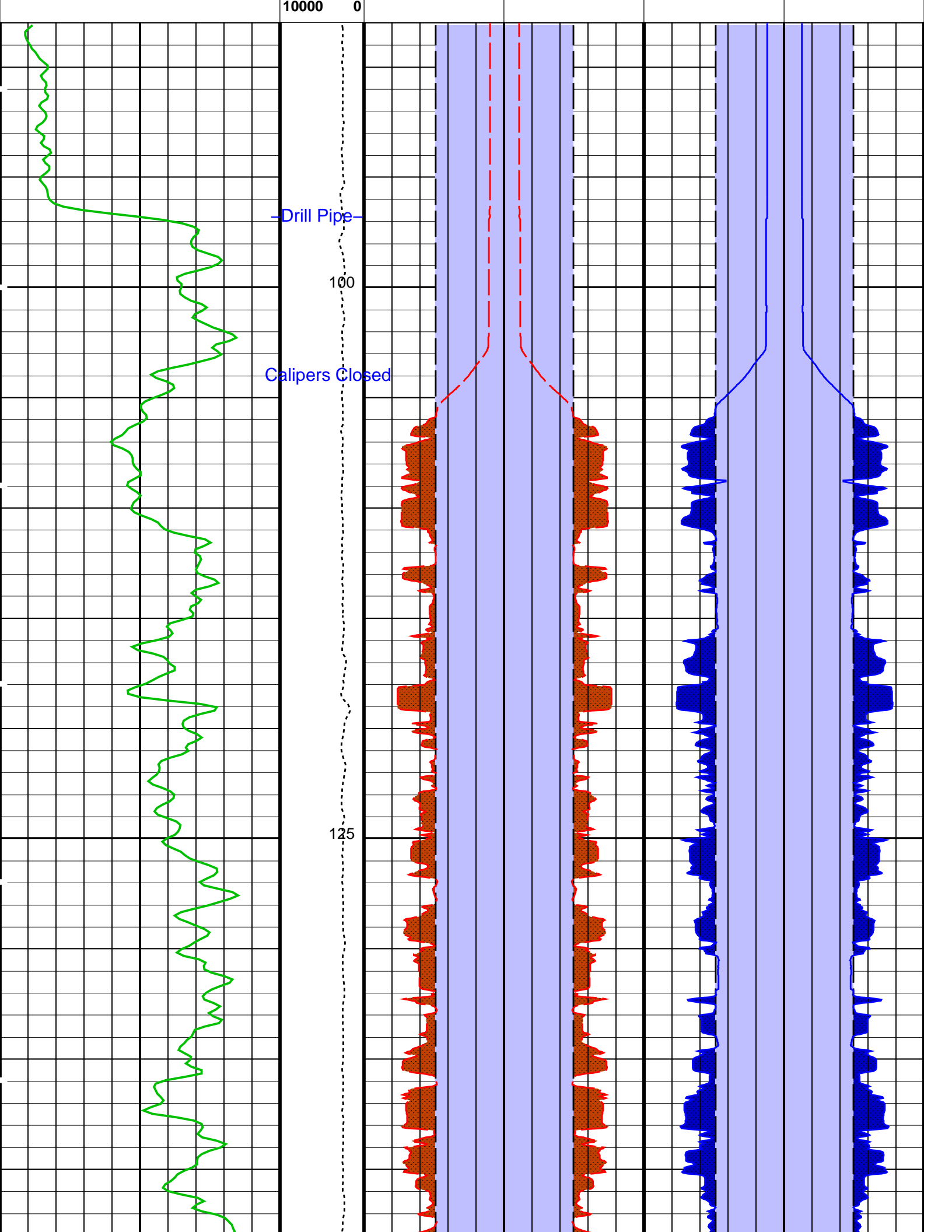
### OP System Version: 19C0-187

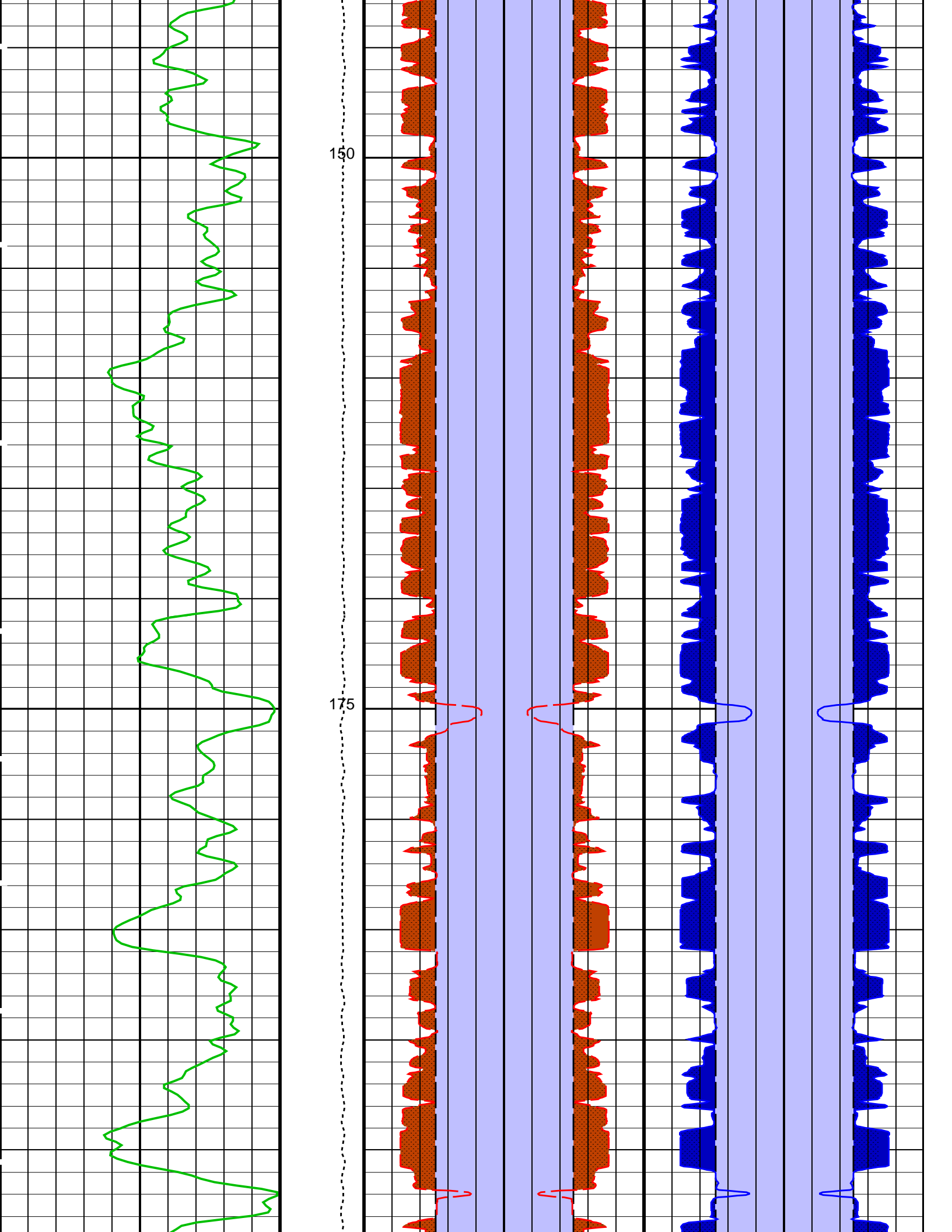
MEST-B 19C0-187 DTA-A 19C0-187  
 DSST-B 19C0-187 EDTC-B SKK-5169-EDTCB

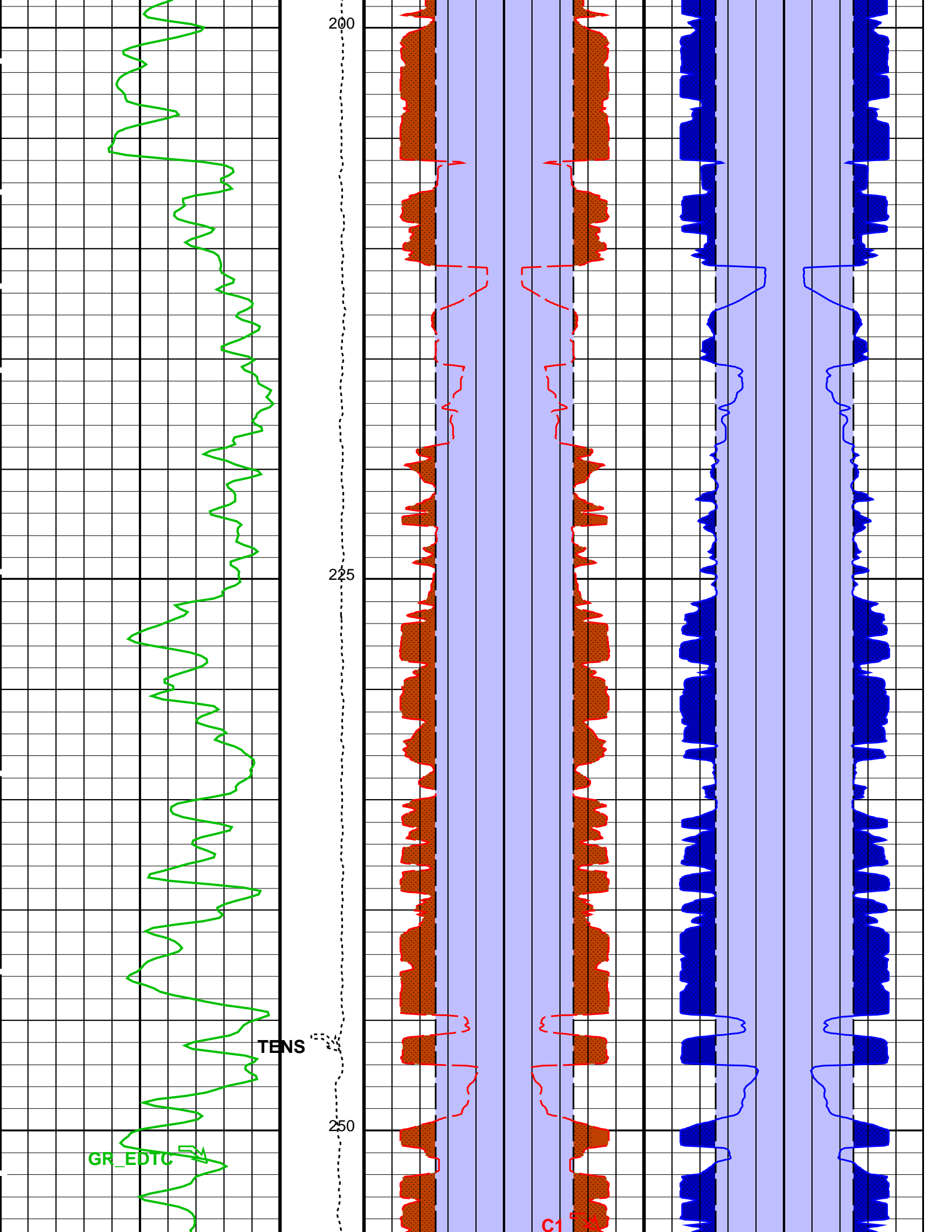
#### PIP SUMMARY

Time Mark Every 60 S

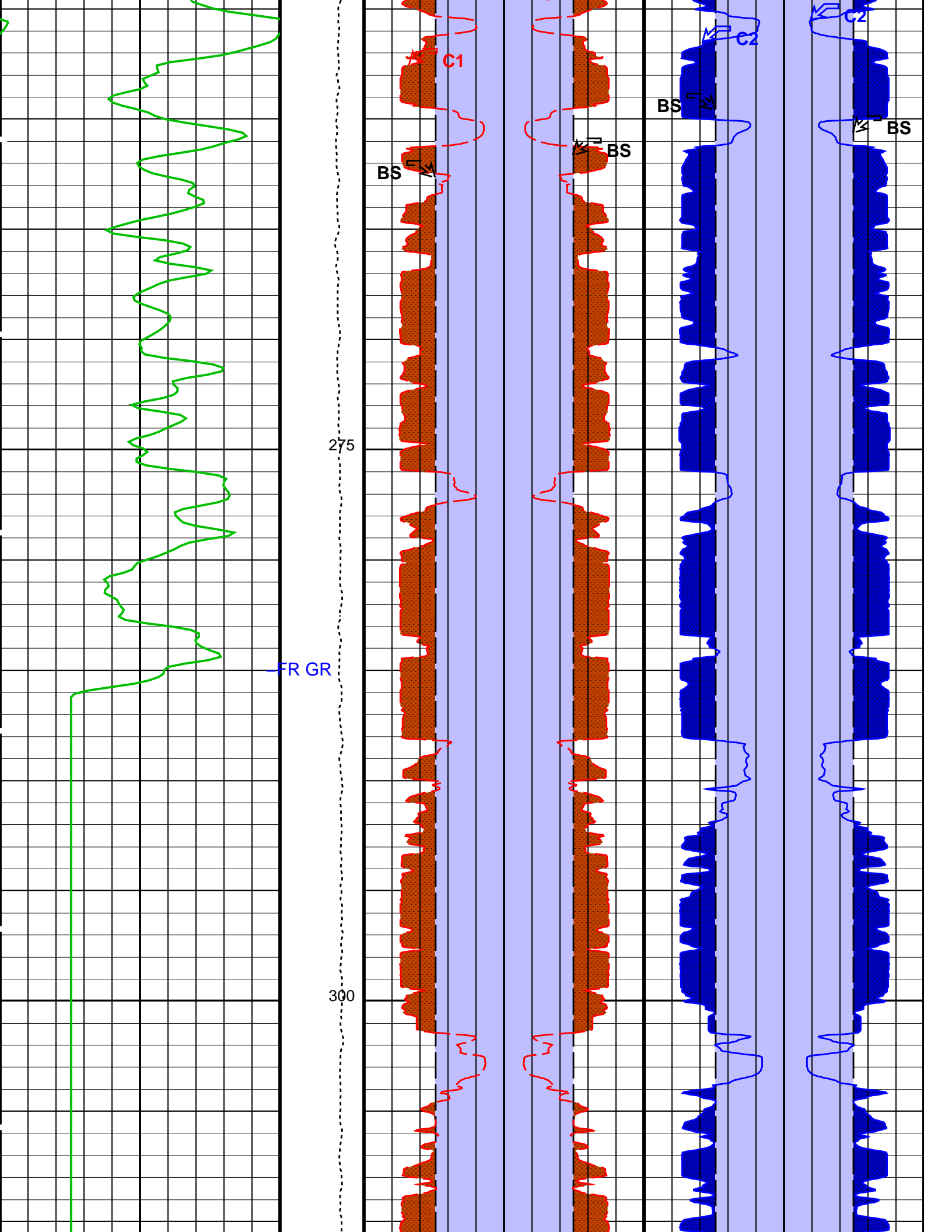
		Area From BS to BS_1		Area From BS_3 to BS_2	
		Area From C1 to BS	Area From BS_1 to C1_1	Area From C2 to BS_3	Area From BS_2 to C2_1
2nd Pass, Sea Floor Depth Reference		20 Caliper 1 (C1) (IN)	0 0 Caliper 1 (C1) (IN)	20 Caliper 2 (C2) (IN)	0 0 Caliper 2 (C2) (IN)
Gamma Ray (GR_EDTC) (GAPI)	Tension (TENS) (LBF)	Bit Size (BS)	Bit Size (BS)	Bit Size (BS)	Bit Size (BS)
0	75	20 (IN)	0 0 (IN)	20 (IN)	0 0 (IN)

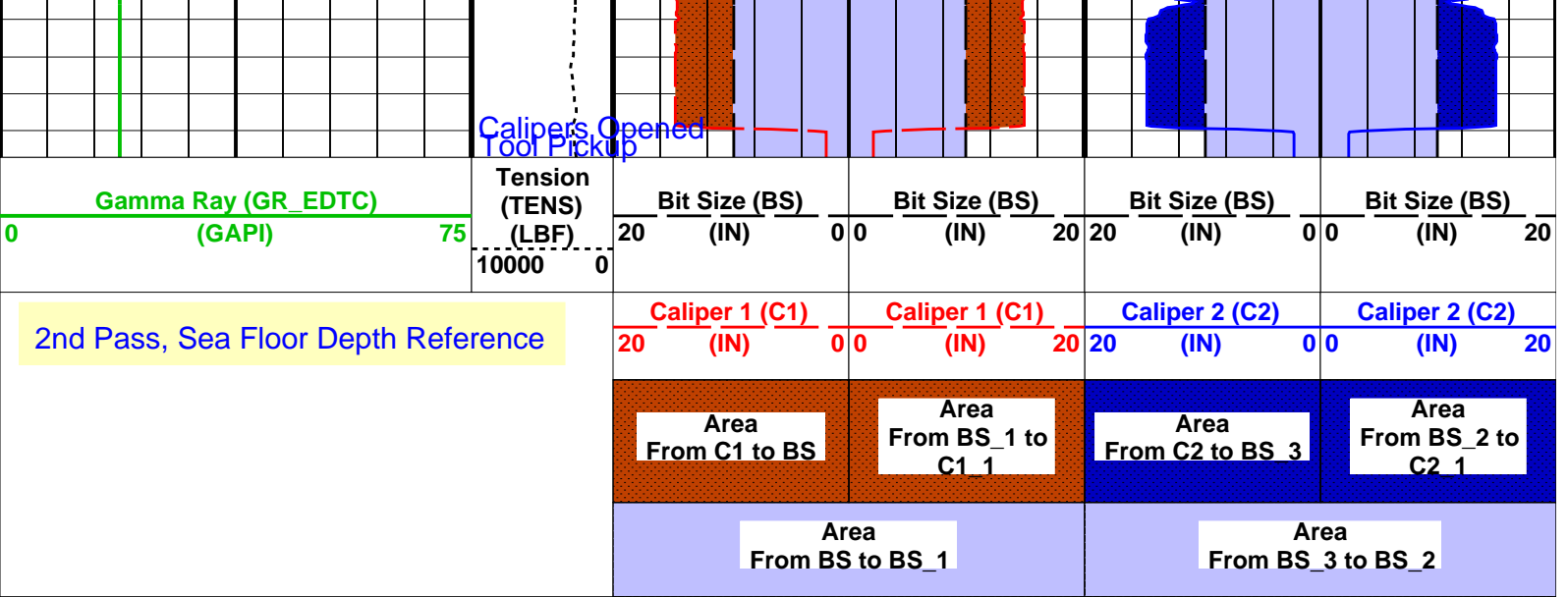












PIP SUMMARY

Time Mark Every 60 S

Parameters

DLIS Name	Description	Value
BS	System and Miscellaneous Bit Size	9.875 IN
DO	Depth Offset for Playback	-1085.0 M
PP	Playback Processing	NORMAL

Format: BHP Vertical Scale: 1:200 Graphics File Created: 16-Jan-2012 07:14

OP System Version: 19C0-187

MEST-B	19C0-187	DTA-A	19C0-187
DSST-B	19C0-187	EDTC-B	SKK-5169-EDTCB

Input DLIS Files

DEFAULT	FMS_DSI_030LUP	FN:42	PRODUCER	15-Jan-2012 15:52	1399.6 M	1172.9 M
---------	----------------	-------	----------	-------------------	----------	----------

Output DLIS Files

DEFAULT	FMS_DSI_032PUP	FN:46	PRODUCER	16-Jan-2012 07:14		
---------	----------------	-------	----------	-------------------	--	--

Input DLIS Files

DEFAULT	FMS_DSI_029LUP	FN:40	PRODUCER	15-Jan-2012 14:18	1752.6 M	1073.5 M
---------	----------------	-------	----------	-------------------	----------	----------

Output DLIS Files

DEFAULT	FMS_DSI_031PUP	FN:44	PRODUCER	15-Jan-2012 16:38	667.5 M	-11.4 M
BACKUPDLIS	FMS_DSI_031PUP	FN:45	PRODUCER	15-Jan-2012 16:38	667.5 M	-11.4 M

OP System Version: 19C0-187

MEST-B	19C0-187	DTA-A	19C0-187
DSST-B	19C0-187	EDTC-B	SKK-5169-EDTCB

PIP SUMMARY

Time Mark Every 60 S

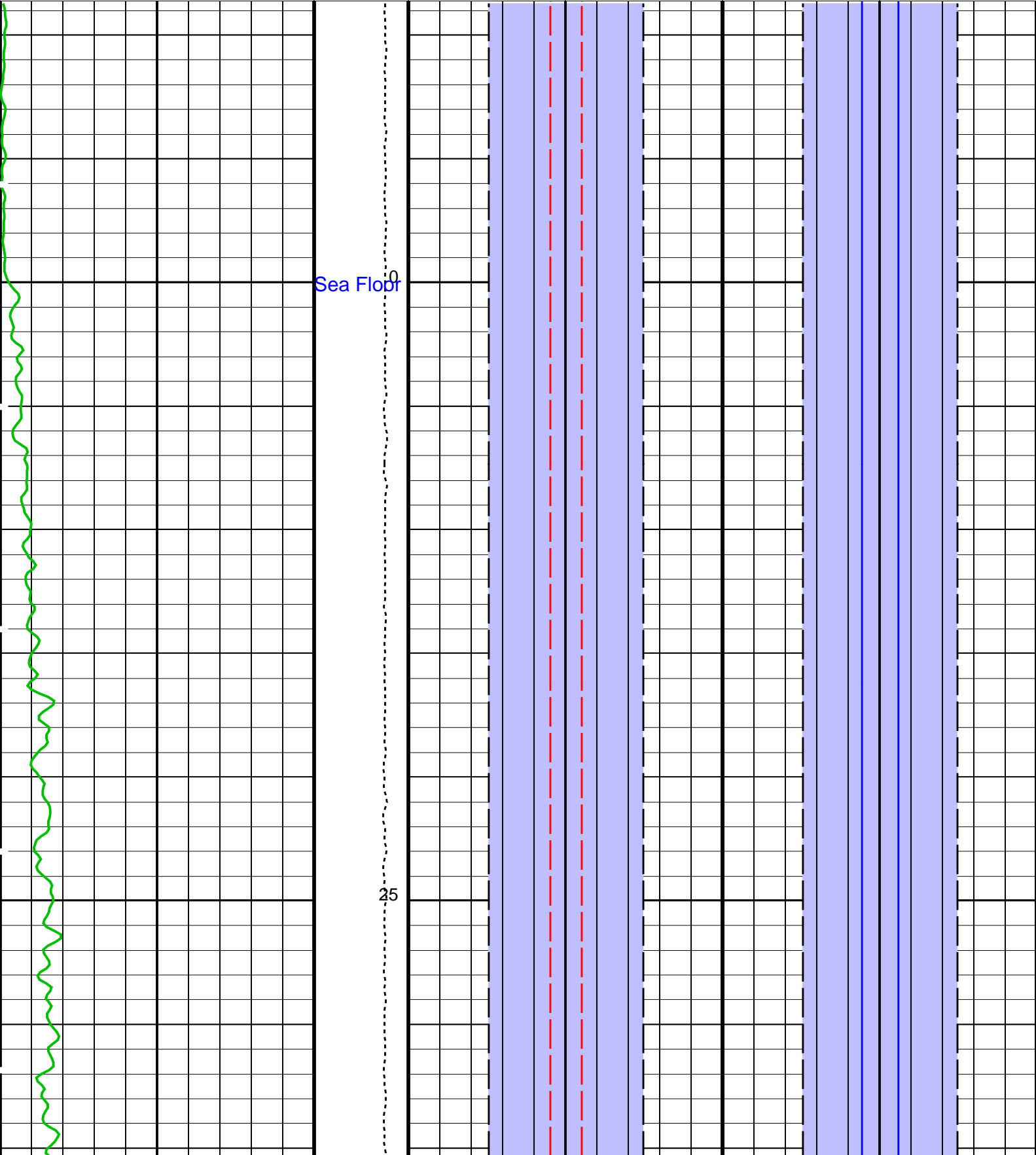
Area From BS to BS\_1

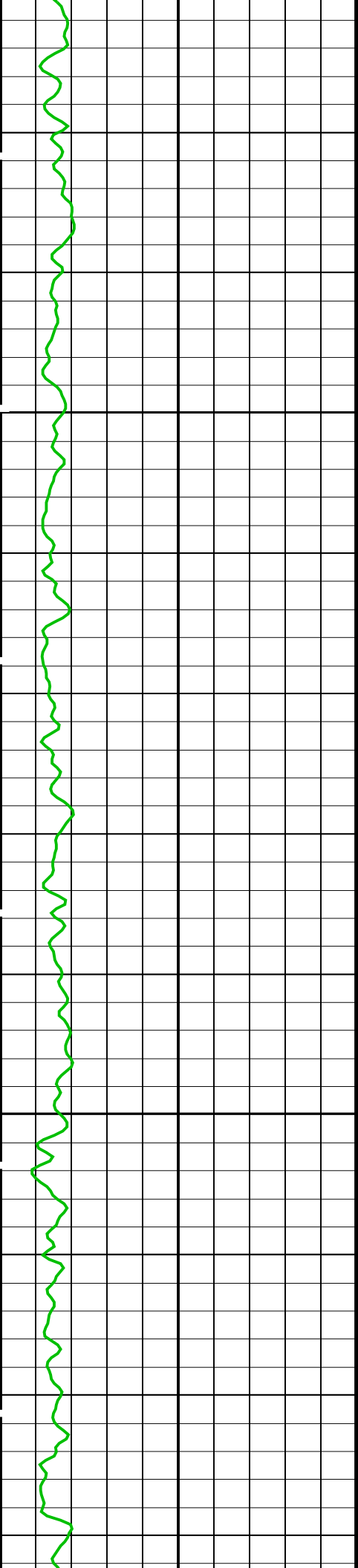
Area From BS\_3 to BS\_2

Area From C1 to BS	Area From BS_1 to C1_1	Area From C2 to BS_3	Area From BS_2 to C2_1
Caliper 1 (C1)	Caliper 1 (C1)	Caliper 2 (C2)	Caliper 2 (C2)
20 (IN)	0 0 (IN)	20 (IN)	0 0 (IN)

Gamma Ray (GR_EDTC) (GAPI)
0 75

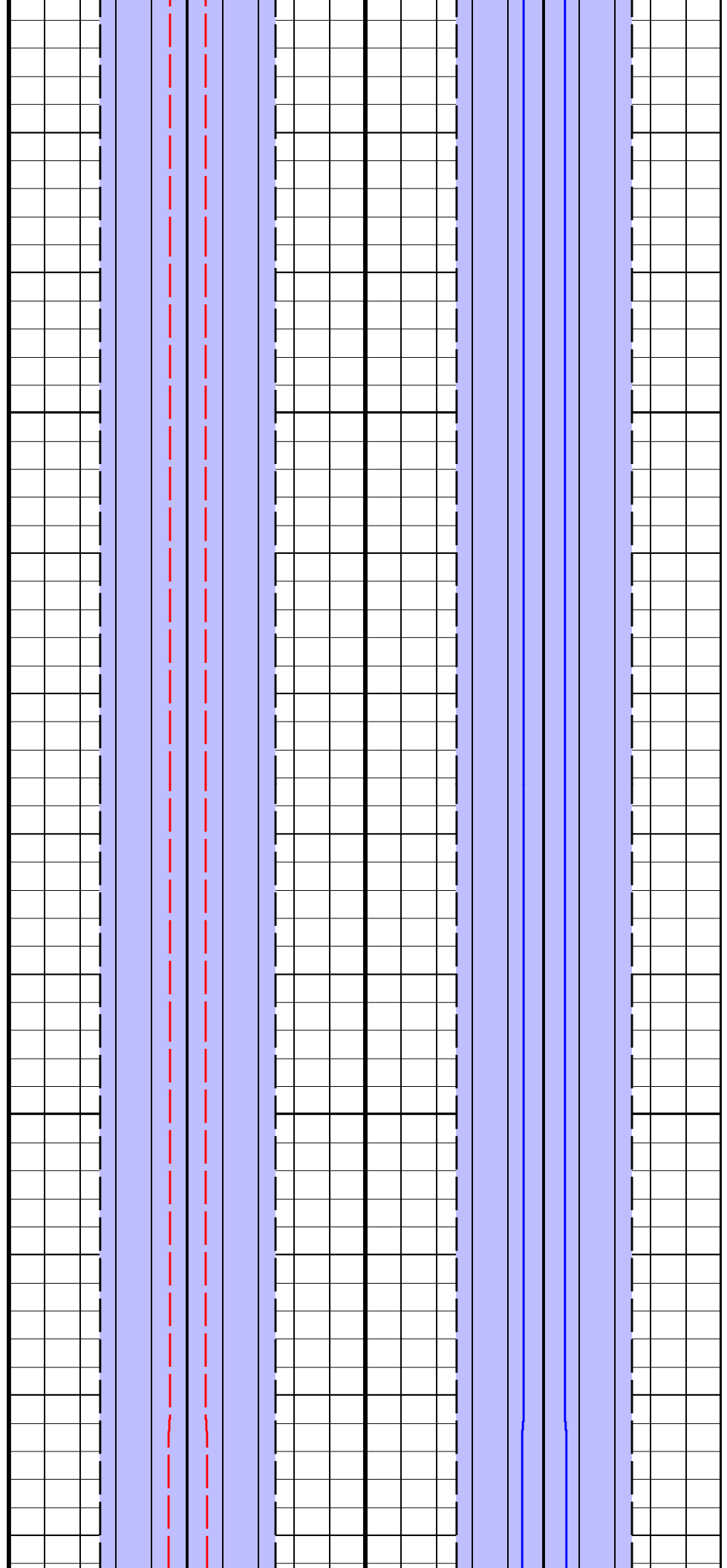
Tension (TENS) (LBF)	Bit Size (BS)	Bit Size (BS)	Bit Size (BS)	Bit Size (BS)
10000 0	20 (IN)	0 0 (IN)	20 (IN)	0 0 (IN)

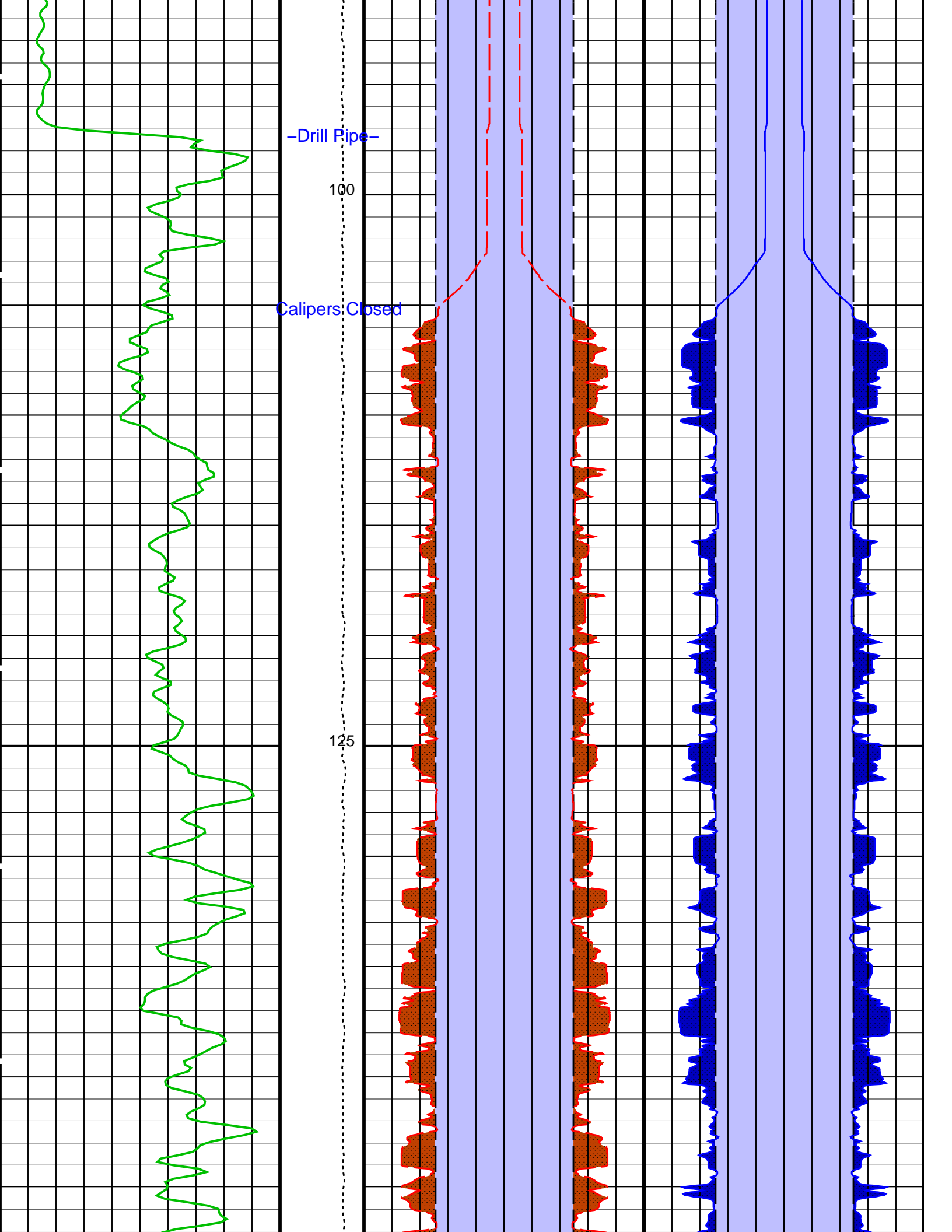




50

75





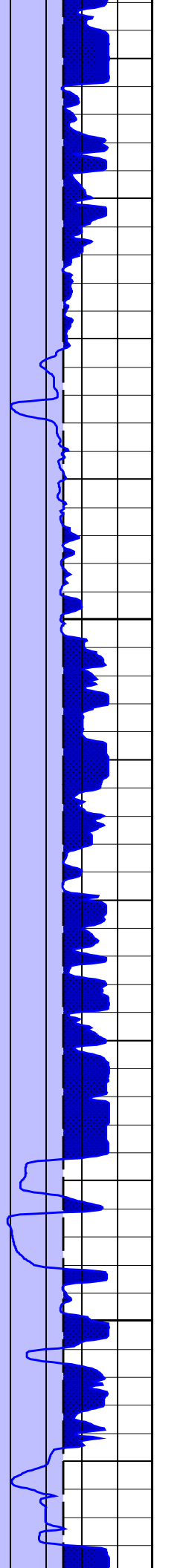
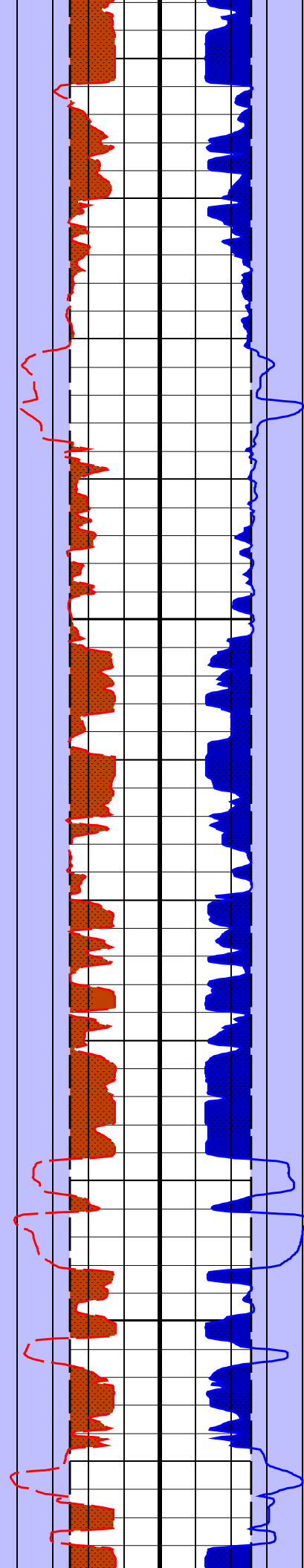
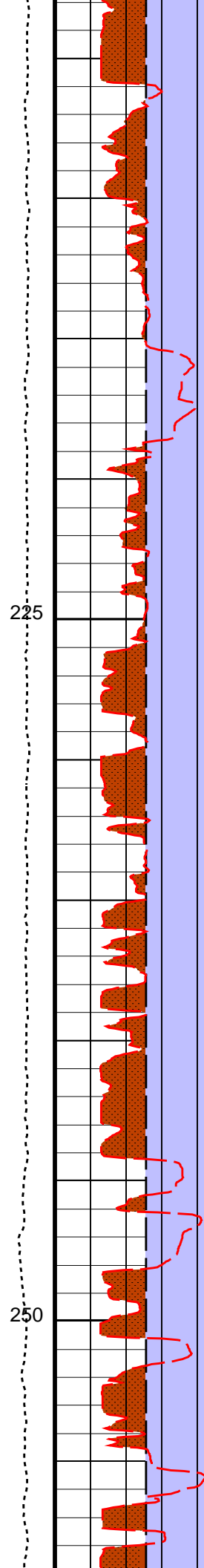
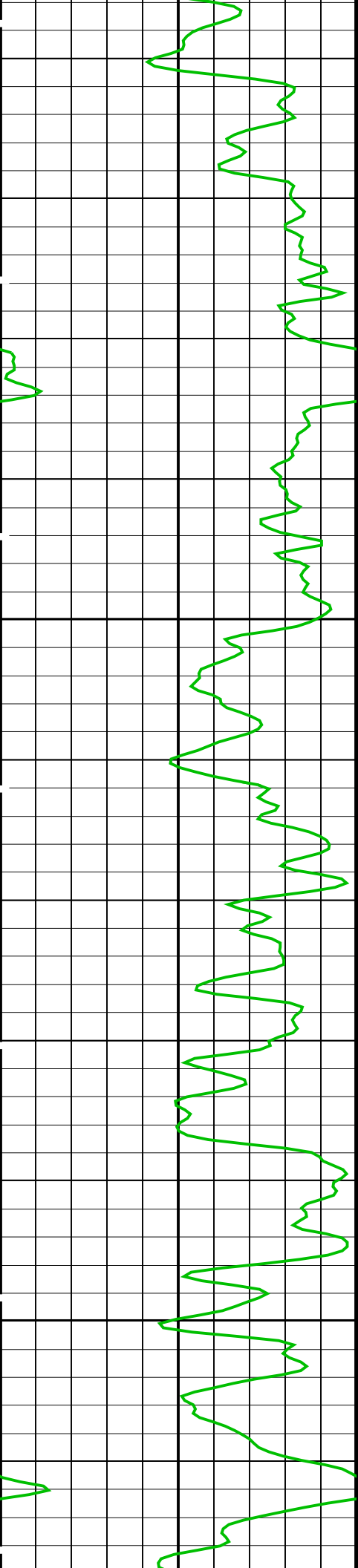
-Drill Pipe-

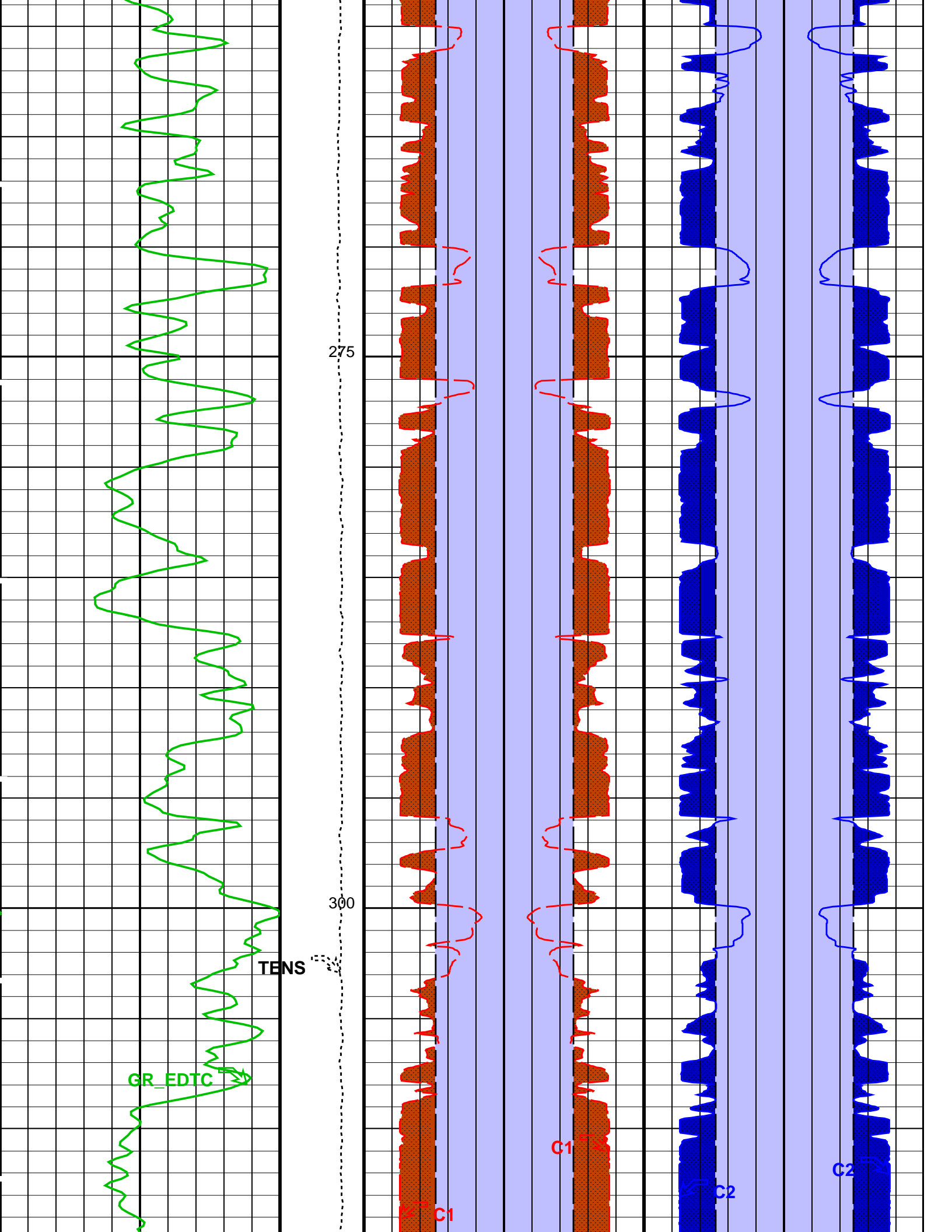
100

Calipers Closed

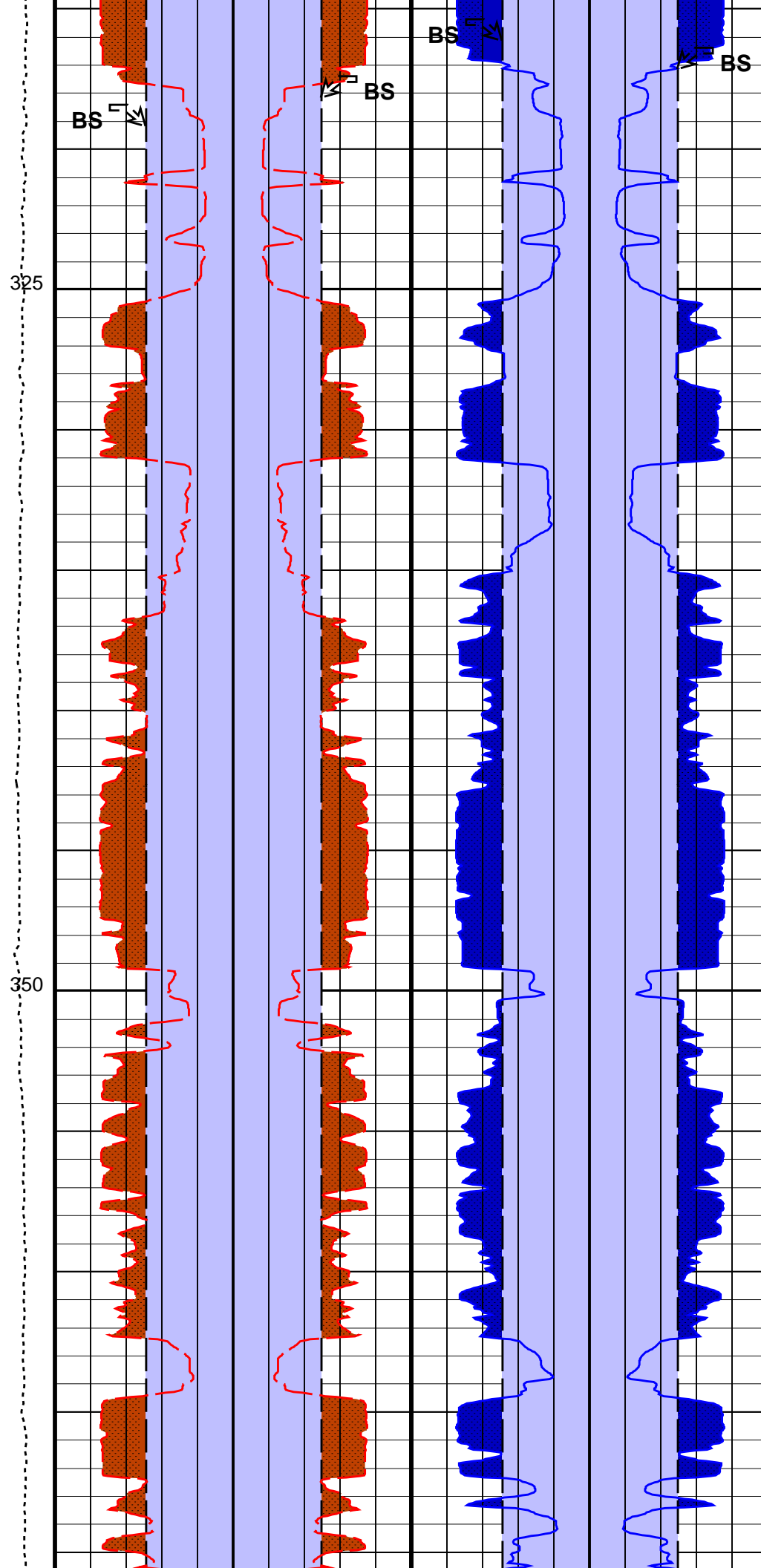
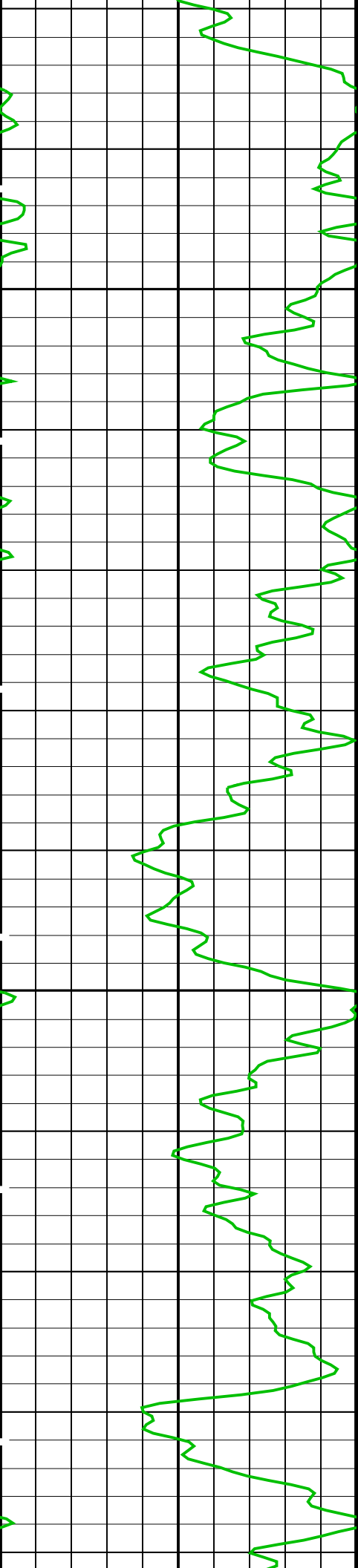
125

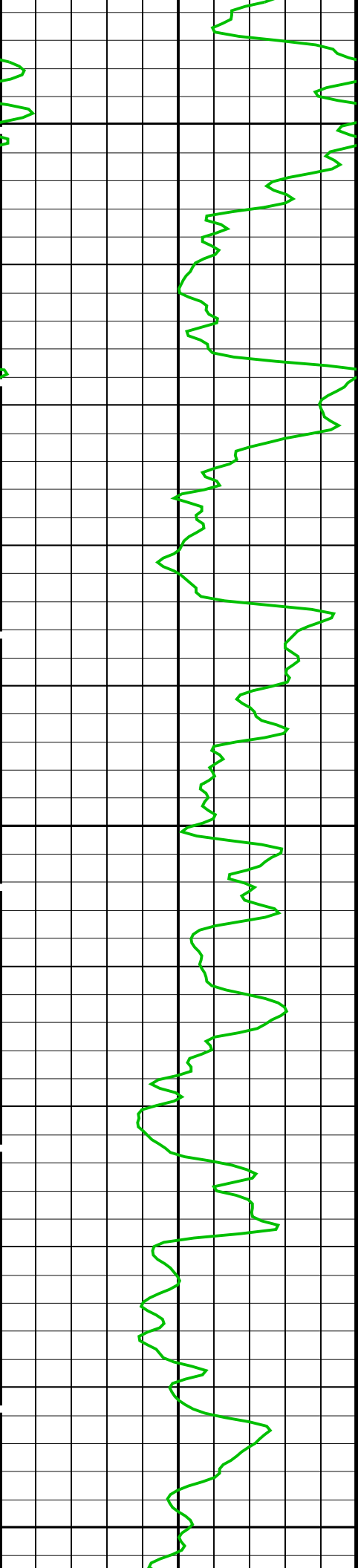








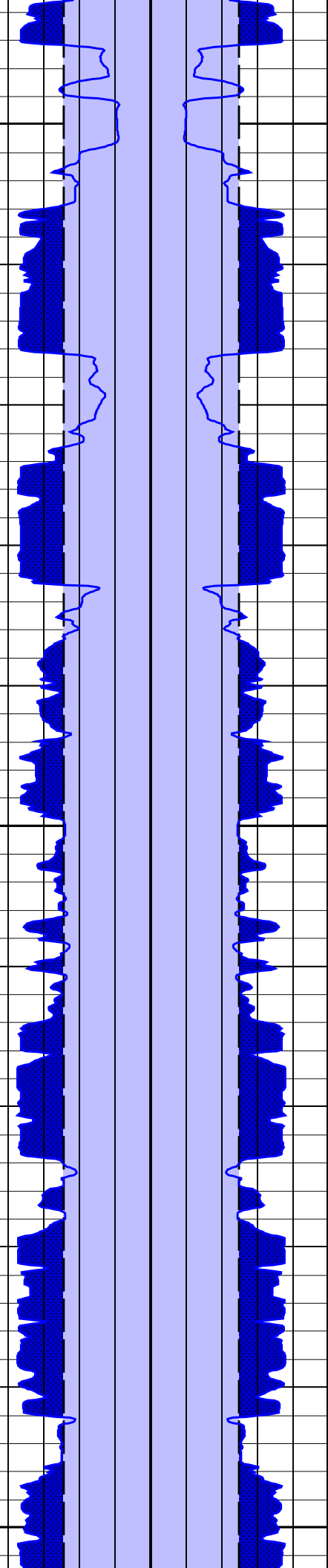
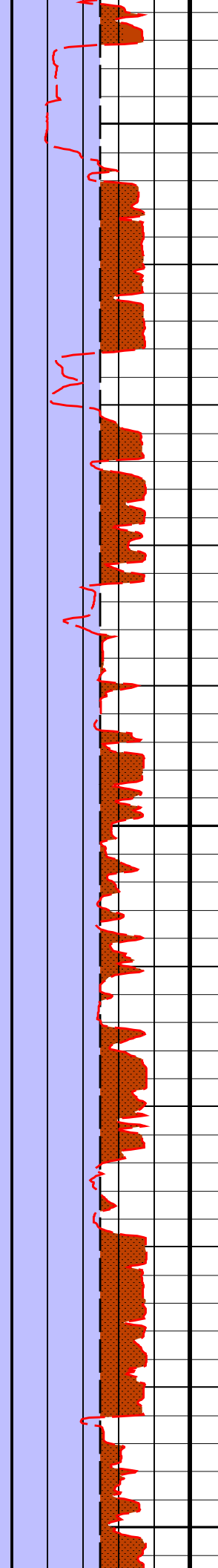
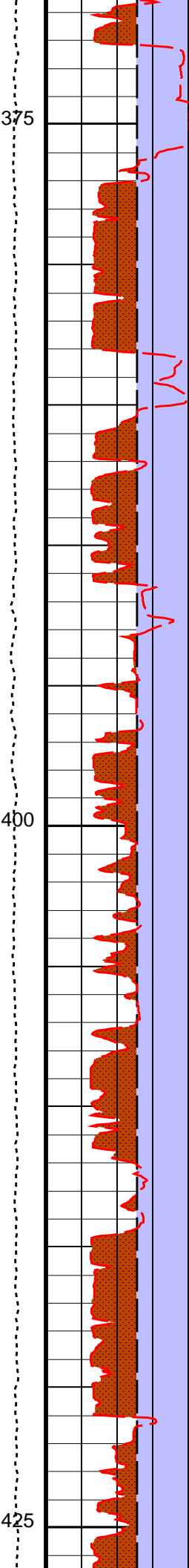


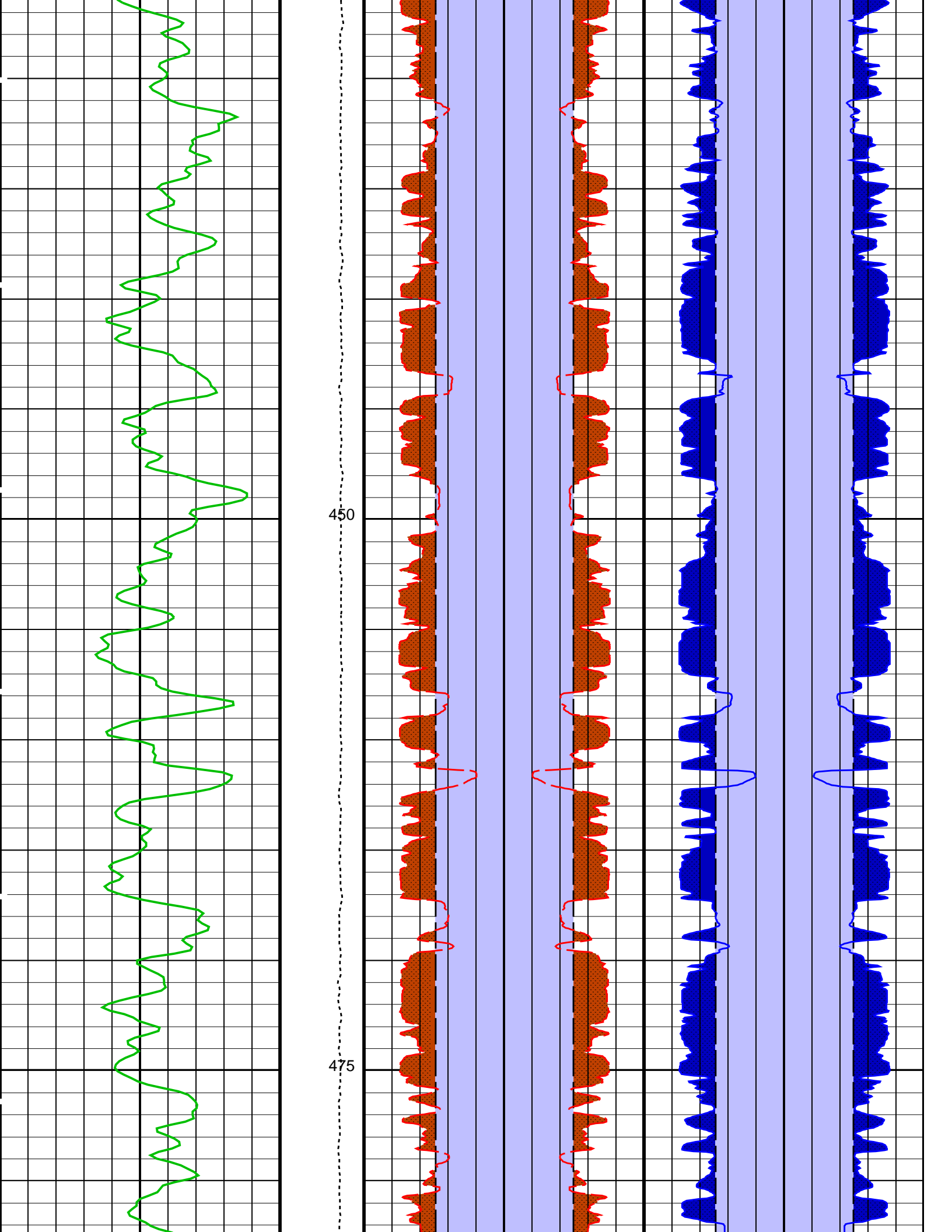


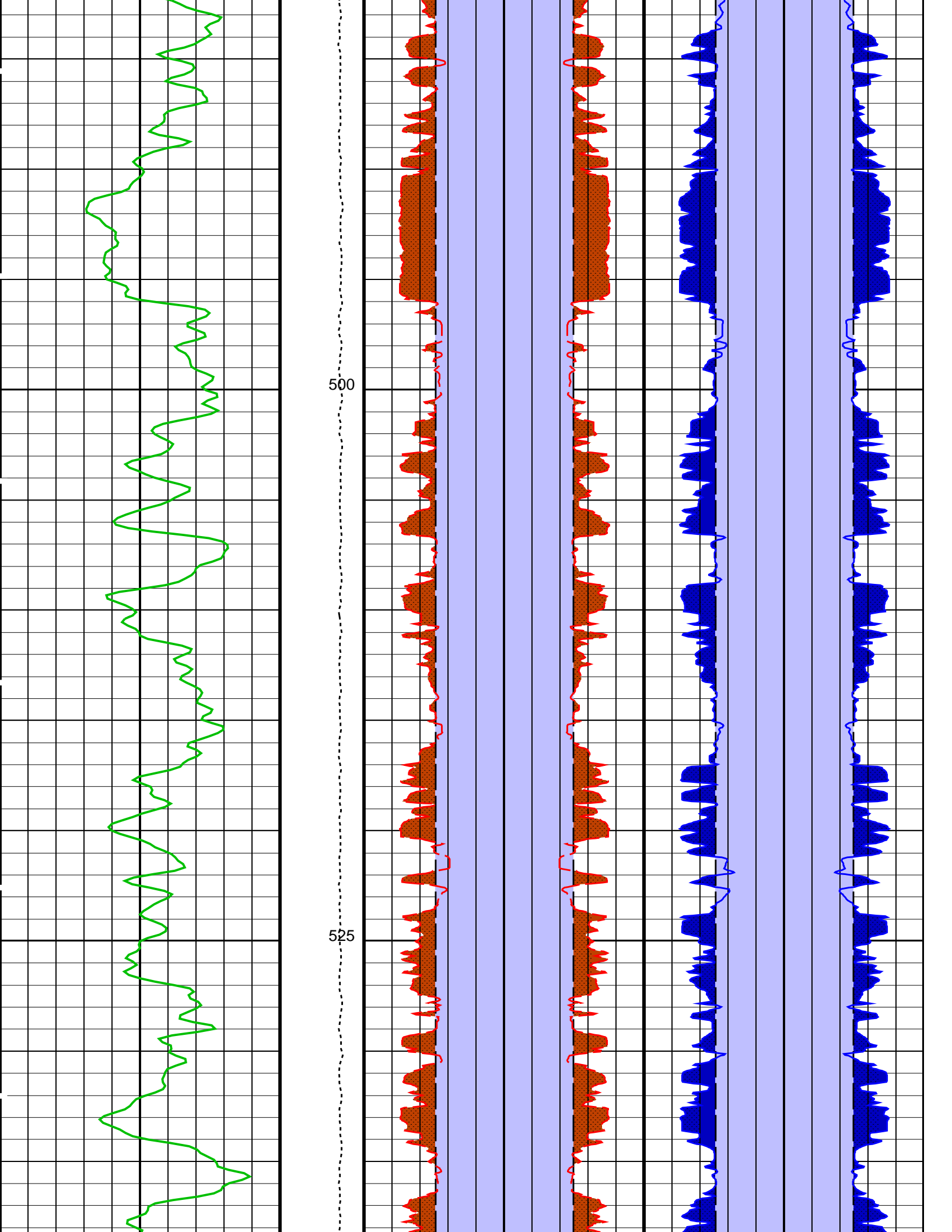
375

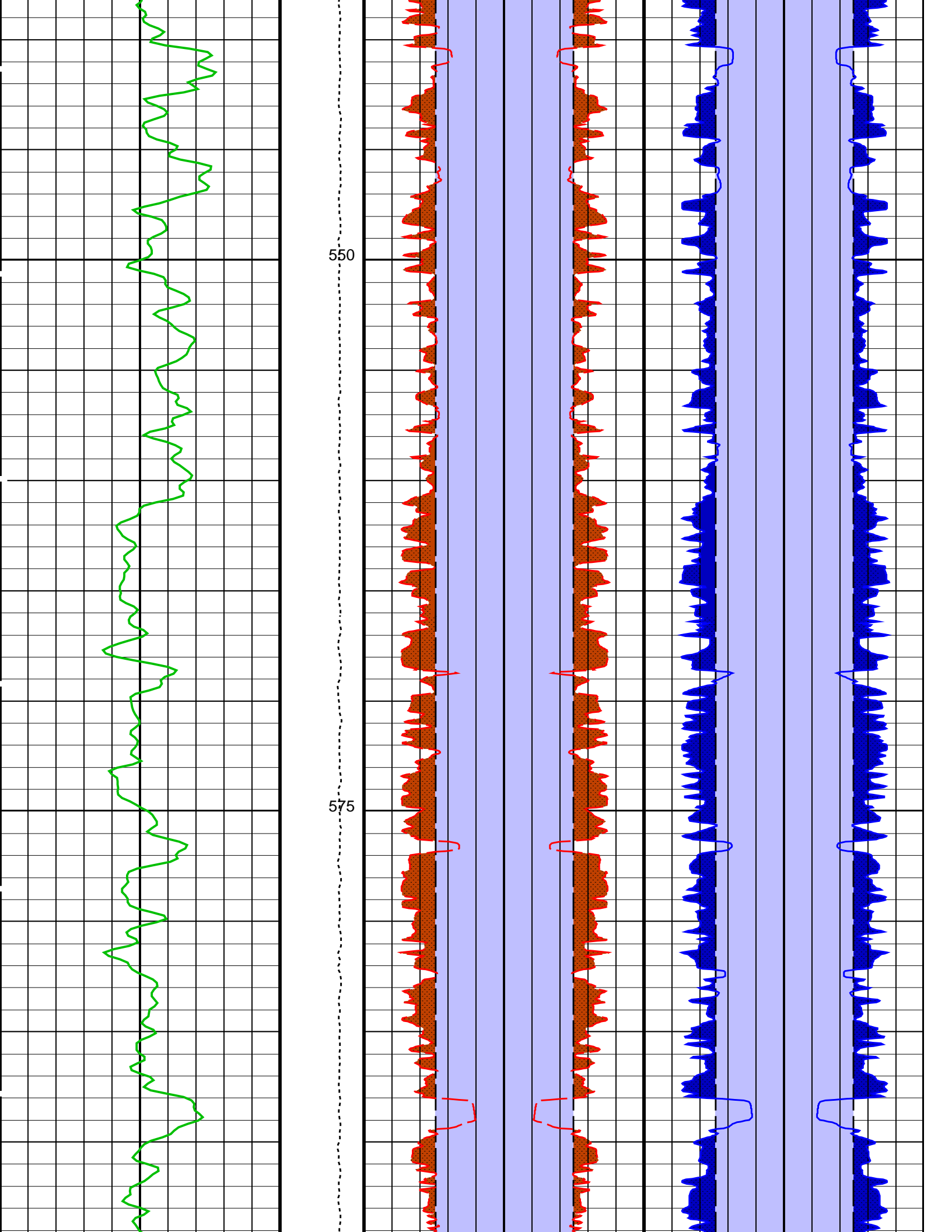
400

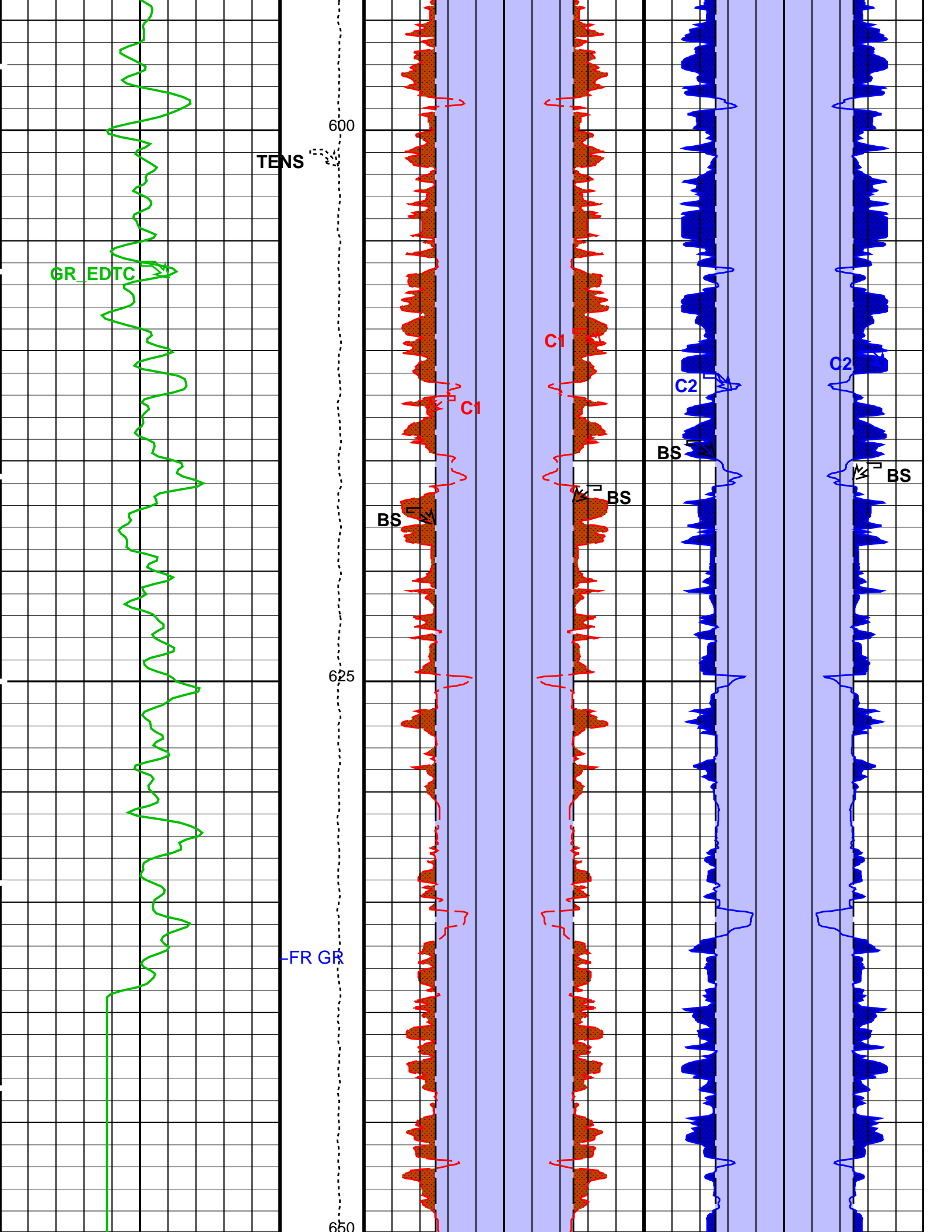
425

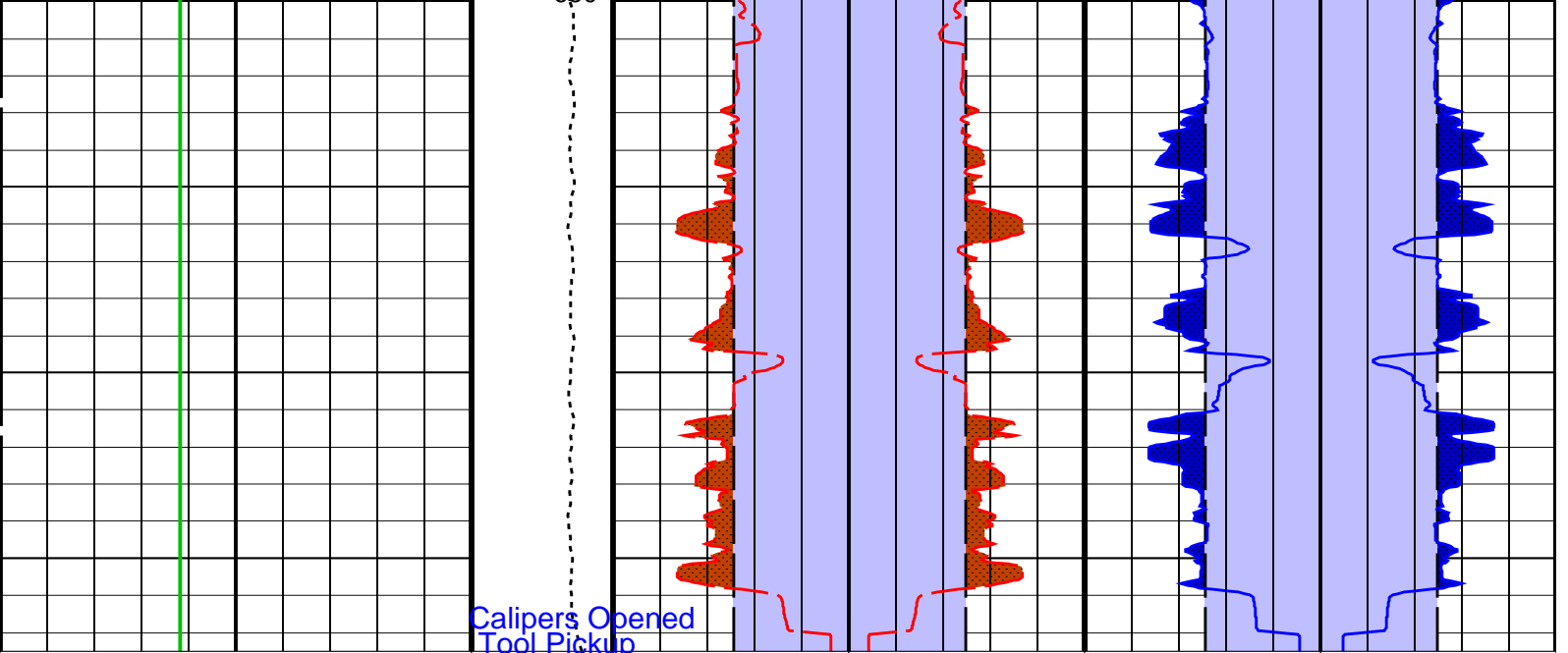












Gamma Ray (GR_EDTC) (GAPI)	Tension (TENS) (LBF)	Bit Size (BS) (IN)	Bit Size (BS) (IN)	Bit Size (BS) (IN)	Bit Size (BS) (IN)
0	10000	20	0 0	20	0 0
75	0	20	0 0	20	0 0
1st Pass, Sea Floor Depth Reference		Caliper 1 (C1) (IN)	Caliper 1 (C1) (IN)	Caliper 2 (C2) (IN)	Caliper 2 (C2) (IN)
		Area From C1 to BS	Area From BS_1 to C1_1	Area From C2 to BS_3	Area From BS_2 to C2_1
		Area From BS to BS_1		Area From BS_3 to BS_2	

**PIP SUMMARY**

Time Mark Every 60 S

**Parameters**

DLIS Name	Description	Value
System and Miscellaneous		
BS	Bit Size	9.875 IN
DO	Depth Offset for Playback	-1085.0 M
PP	Playback Processing	NORMAL

Format: BHP Vertical Scale: 1:200 Graphics File Created: 15-Jan-2012 16:38

**OP System Version: 19C0-187**

MEST-B	19C0-187	DTA-A	19C0-187
DSST-B	19C0-187	EDTC-B	SKK-5169-EDTCB

**Input DLIS Files**

DEFAULT	FMS_DSI_029LUP	FN:40	PRODUCER	15-Jan-2012 14:18	1752.6 M	1073.5 M
---------	----------------	-------	----------	-------------------	----------	----------

**Output DLIS Files**

DEFAULT	FMS_DSI_031PUP	FN:44	PRODUCER	15-Jan-2012 16:38
BACKUPDLIS	FMS_DSI_031PUP	FN:45	PRODUCER	15-Jan-2012 16:38

Measurement	Nominal	Master	Before	After	Change	Limit	Units
<b>Micro Electrical Scanner – B (Slim) Wellsite Calibration – Caliper Calibration</b>							
Before: 15-Jan-2012 11:26							
Caliper 1 Zero Measurement	12.00	N/A	12.92	N/A	N/A	N/A	IN
Caliper 2 Zero Measurement	12.00	N/A	12.77	N/A	N/A	N/A	IN
Caliper 1 Plus Measurement	15.19	N/A	16.06	N/A	N/A	N/A	IN
Caliper 2 Plus Measurement	15.19	N/A	15.97	N/A	N/A	N/A	IN
<b>Micro Electrical Scanner – B (Slim) Wellsite Calibration – CROUZET ACCELEROMETER PROM HAS BEEN READ CORRECTLY</b>							
Before: 15-Jan-2012 11:21							
TEMPERATURE REFERENCE :	N/A	N/A	20	N/A	N/A	N/A	DEGC
YEAR OF CALIBRATION :	N/A	N/A	99	N/A	N/A	N/A	
MONTH OF CALIBRATION :	N/A	N/A	3	N/A	N/A	N/A	
SERIAL NUMBER :	N/A	N/A	743	N/A	N/A	N/A	
<b>Micro Electrical Scanner – B (Slim) Wellsite Calibration – CROUZET MAGNETOMETER PROM HAS BEEN READ CORRECTLY</b>							
Before: 15-Jan-2012 11:21							
TEMPERATURE REFERENCE :	N/A	N/A	23	N/A	N/A	N/A	DEGC
YEAR OF CALIBRATION :	N/A	N/A	3	N/A	N/A	N/A	
MONTH OF CALIBRATION :	N/A	N/A	9	N/A	N/A	N/A	
SERIAL NUMBER :	N/A	N/A	507	N/A	N/A	N/A	
<b>Enhanced DTS Cartridge Wellsite Calibration – EDTC Accelerometer Calibration</b>							
Before: 15-Jan-2012 3:14							
EDTC Z-Axis Acceleration	9.810	N/A	9.797	N/A	N/A	N/A	M/S2
<b>Enhanced DTS Cartridge Wellsite Calibration – Detector Calibration</b>							
Before: 27-Dec-2011 9:12							
Gamma Ray (Jig – Bkg)	160.1	N/A	160.1	N/A	N/A	14.56	GAPI
Gamma Ray (Calibrated)	164.0	N/A	164.0	N/A	N/A	15.00	GAPI

Micro Electrical Scanner – B (Slim) / Equipment Identification


<b>Primary Equipment:</b>		
MEST Sonde – B	MEDS – B	702
MEST Preamplifier Cartridge – AB	MEPC – AB	807
GPIT Cartridge – A	GPIC – A	840
MEST Acquisition Cartridge – A	MEAC – A	875
<b>Auxiliary Equipment:</b>		
MEST-B Preamplifier Cartridge Housing	MEPH – A	702
MEST Acquisition Cartridge Housing (Slim)	MEAH – B	726

Enhanced DTS Cartridge / Equipment Identification

<b>Primary Equipment:</b>		
EDTC Gamma Ray Detector	EDTG – A/B	8305
Enhanced DTS Cartridge	EDTC – B	8317
<b>Auxiliary Equipment:</b>		
EDTC Housing	EDTH – B	8303

Enhanced DTS Cartridge Wellsite Calibration

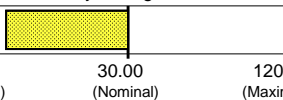

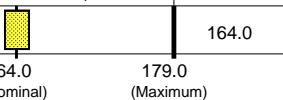
EDTC Accelerometer Calibration

Phase	EDTC Z-Axis Acceleration M/S2	Value
Before		9.797
	9.610 (Minimum)      9.810 (Nominal)      10.01 (Maximum)	

Before: 15-Jan-2012 3:14

Enhanced DTS Cartridge Wellsite Calibration

Detector Calibration

Phase	Gamma Ray Background GAPI	Value	Phase	Gamma Ray (Jig – Bkg) GAPI	Value	Phase	Gamma Ray (Calibrated) GAPI	Value
Before		6.619	Before		160.1	Before		164.0
	0 (Minimum)      30.00 (Nominal)      120.0 (Maximum)			145.6 (Minimum)      160.1 (Nominal)      174.7 (Maximum)			149.0 (Minimum)      164.0 (Nominal)      179.0 (Maximum)	

Before: 27-Dec-2011 9:12



Company: **Lamont Doherty**

**Schlumberger**

Well: **Expedition 339, Site U1391 WI-01B**

Field: **Mediterranean Outflow (Portugal)**

Rig: **JOIDES Resolution**

Ocean: **Atlantic**

FMS Dual Axis Caliper  
Gamma Ray