

## Processed FMS Images Depth Reference: m WMSF

COMPANY: Lamont Doherty Earth Observatory

WELL: Expedition 344S U0070A

FIELD: Baffin Bay

Ocean: Atlantic

COUNTRY: USA

Date Processed: Date Logged: 20-Sep-2012

Job Number: Processed at:

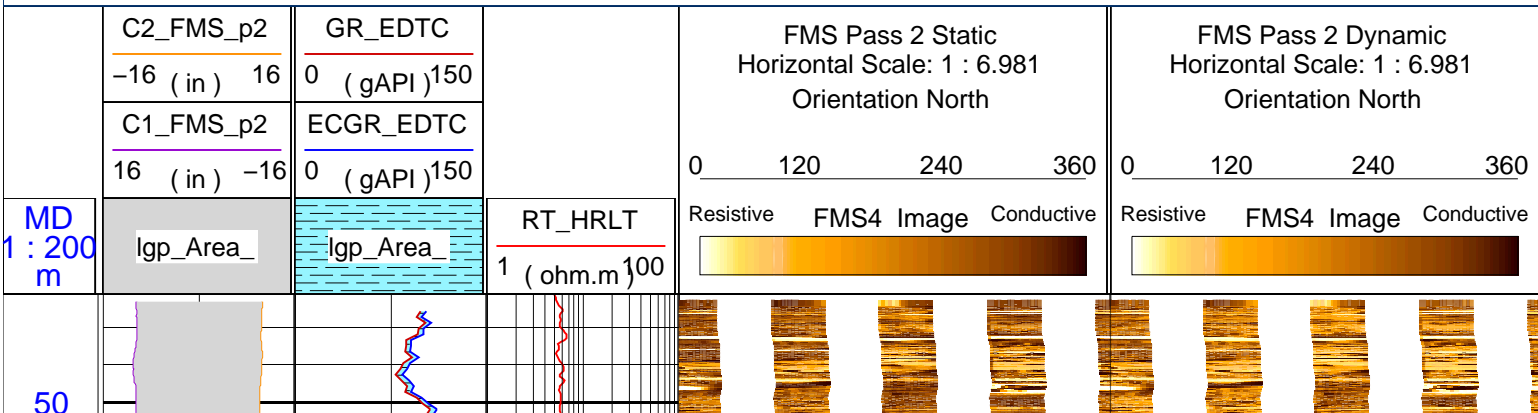
Well Location:

Latitude: N 75° 42.3641' Longitude: W 65° 43.7719'

Elevations: KB: 11m DF: 11m GL: -603m

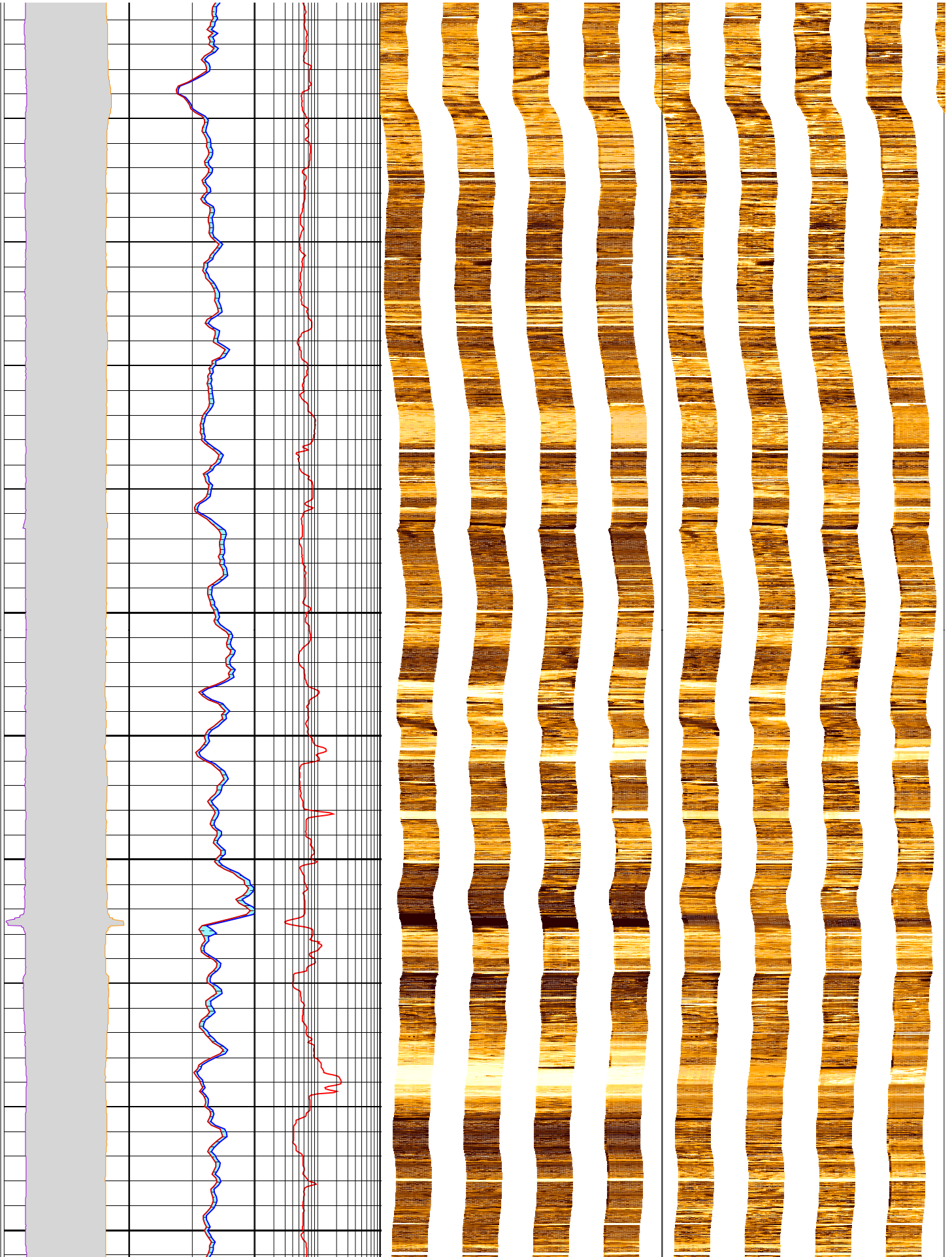
FOLD HERE The well name, location and borehole reference data were furnished by the customer.

All interpretations are opinions based on inferences from electrical or other measurements and we cannot, and do not guarantee the accuracy or correctness of any interpretation, and we shall not, except in the case of gross or willful negligence on our part, be liable or responsible for any loss, costs, damages or expenses incurred or sustained by anyone resulting from any interpretations made by any of our officers, agents or employees. These interpretations are also subject to Clause 4 of our General Terms and Conditions as set out in our current Price Schedule.



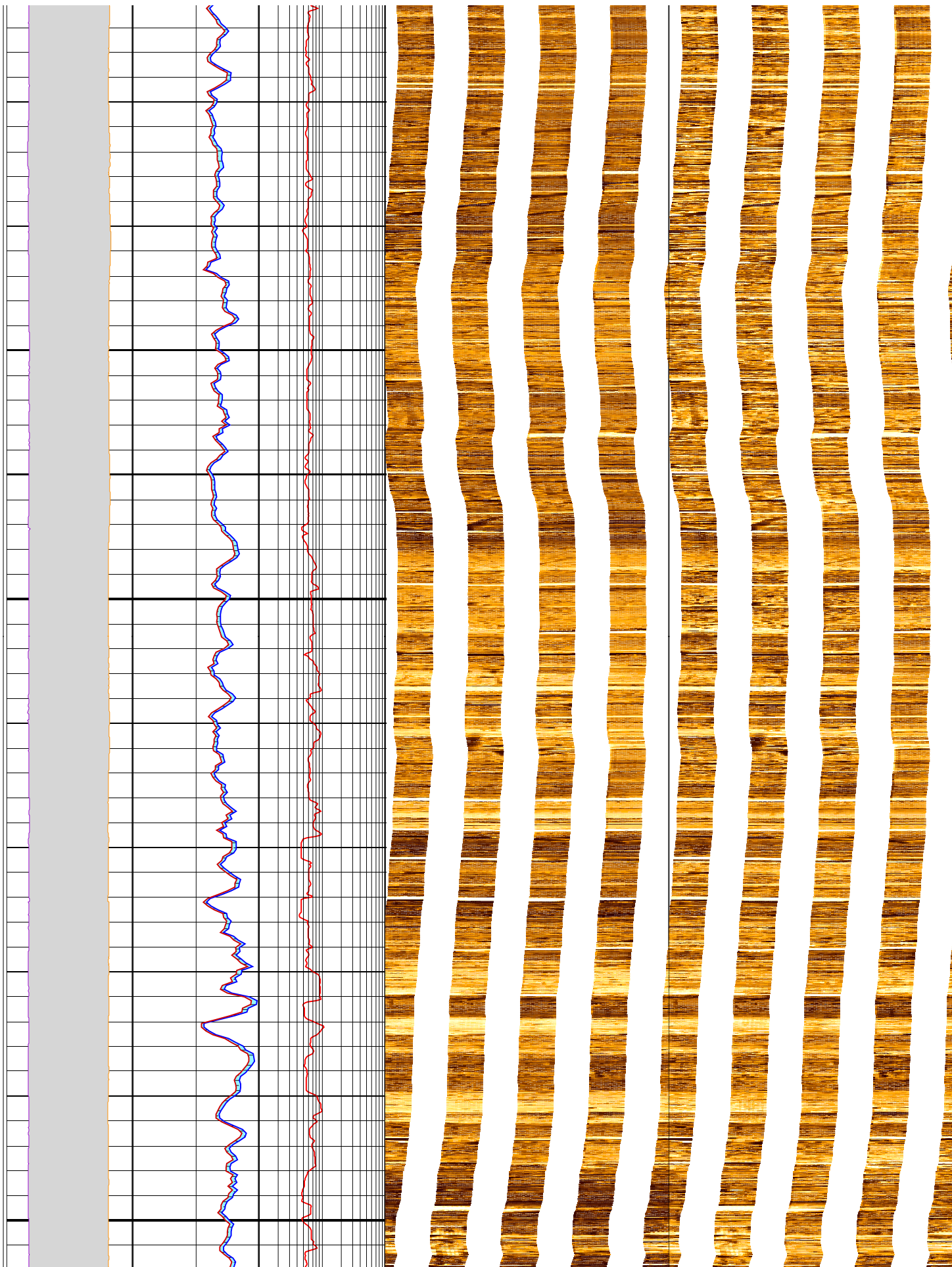
75

100



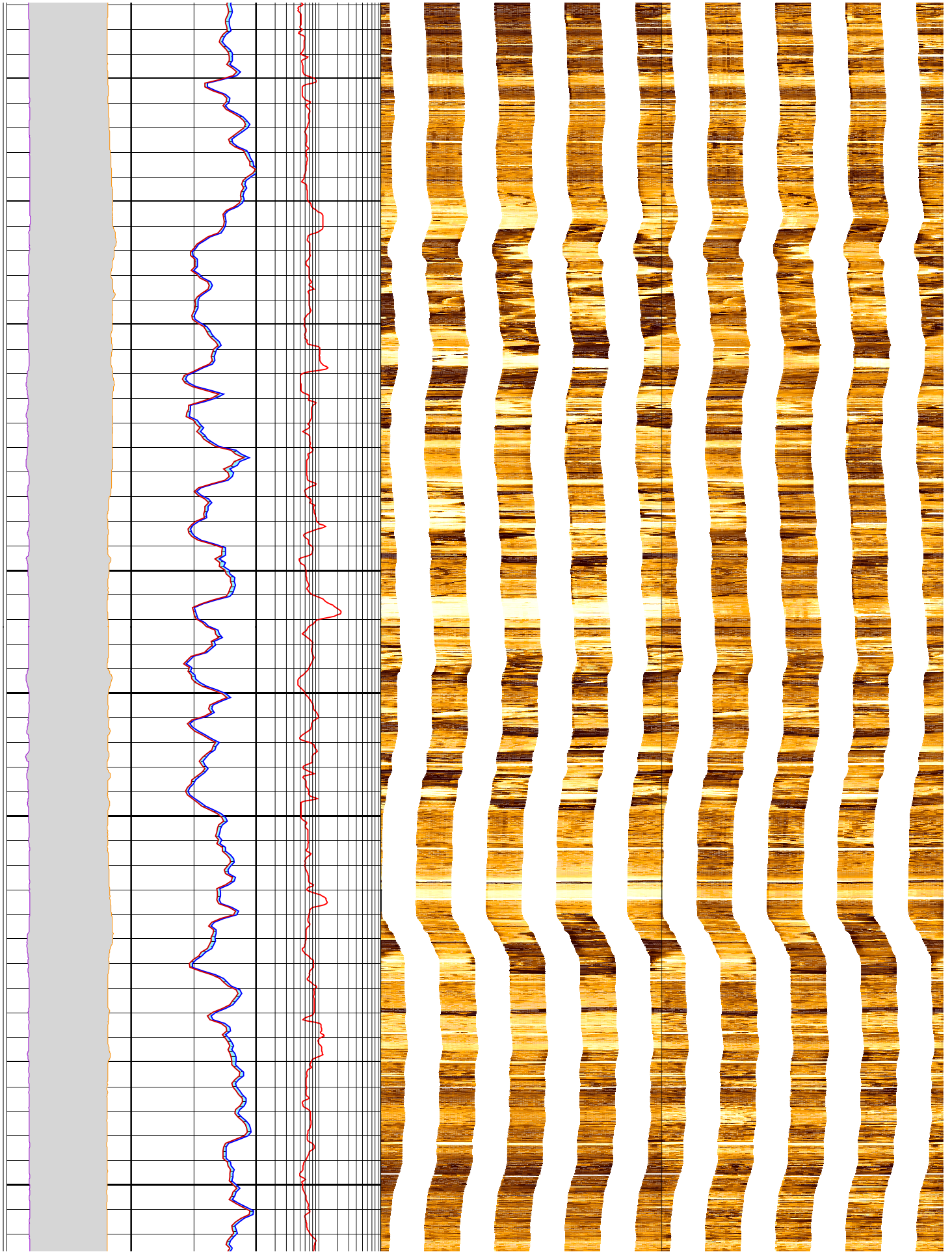
125

150



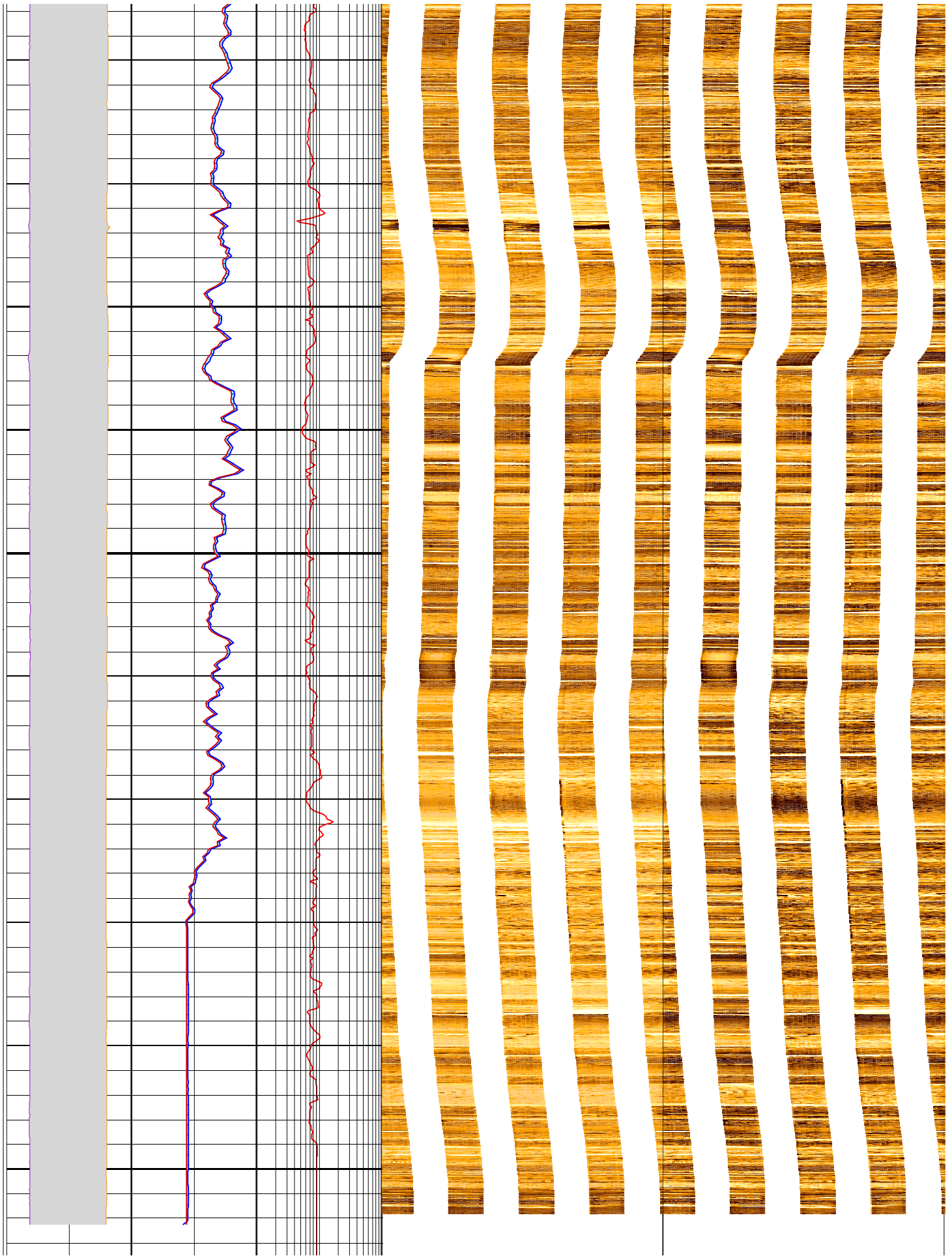
175

200



225

250



MD 1 : 200 m	lgp_Area_	lgp_Area_	RT_HRLT 1 (ohm.m) 100	<p>FMS Pass 2 Static Horizontal Scale: 1 : 6.981 Orientation North</p> <p>0      120      240      360</p> <p>Resistive    FMS4 Image    Conductive</p>	<p>FMS Pass 2 Dynamic Horizontal Scale: 1 : 6.981 Orientation North</p> <p>0      120      240      360</p> <p>Resistive    FMS4 Image    Conductive</p>
	C1_FMS_p2 16 (in) -16	ECGR_EDTC 0 (gAPI) 150			
	C2_FMS_p2 -16 (in) 16	GR_EDTC 0 (gAPI) 150			