

Company: Lamont Doherty Earth Observatory
Shell
Well: Expedition 344S, U0080A (USC80)
Field: Baffin Bay
Rig: JOIDES Resolution **Country:** USA

DSI Dipole Sonic Imager Lower Dipole

LOCATION		Latitude: N 75° 35.9015' Longitude: W 65° 02.8928'	Elev.: K.B. 11.00 m G.L. -234.00 m D.F. 11.00 m
Permanent Datum:	Mean Sea Level	Elev.: 0.00 m	
Log Measured From:	Drill Floor	11.00 m above Perm. Datum	
Drilling Measured From:	Drill Floor		
Ocean:	Atlantic	Longitude	Latitude
		N 75° 35.9015'	W 65° 02.8928'

Rig: JOIDES Resolution
Field: Baffin Bay
Location: Latitude: N 75° 35.9015'
Well: Expedition 344S, U0080A (USC80)
Company: Lamont Doherty Earth Observatory

Logging Date	21-Aug-2012			
Run Number	4			
Depth Driller	358.5 m			
Schlumberger Depth	354.5 m			
Bottom Log Interval	345 m			
Top Log Interval	31 m			
Casing Driller Size @ Depth	7.000 in @ 31 m			
Casing Schlumberger	31 m			
Bit Size	9.875 in			
Type Fluid In Hole	Seawater			
Density	1.05 g/cm3			
Fluid Loss	PH			
Source Of Sample	N/A			
RM @ Measured Temperature	@		@	
RMF @ Measured Temperature	@		@	
RMC @ Measured Temperature	@		@	
Source RMF	RMC		N/A	
RM @ MRT	@ 9		@ 9	
Maximum Recorded Temperatures	9 degC			
Circulation Stopped	21-Aug-2012		4:00	
Logger On Bottom	22-Aug-2012		8:50	
Unit Number	625003		Houston	
Recorded By	C. Fuman			
Witnessed By	G. Guerin, H. Evans			

					Run 1	Run 2	R
Logging Date							
Run Number							
Depth Driller							
Schlumberger Depth							
Bottom Log Interval							
Top Log Interval							
Casing Driller Size @ Depth			@				
Casing Schlumberger							
Bit Size							
Type Fluid In Hole							
Density							
Fluid Loss							
Source Of Sample							
RM @ Measured Temperature			@				
RMF @ Measured Temperature			@				
RMC @ Measured Temperature			@				
Source RMF			RMC				
RM @ MRT			@				
Maximum Recorded Temperatures							
Circulation Stopped							
Logger On Bottom							
Unit Number							
Recorded By							
Witnessed By							

DISCLAIMER

THE USE OF AND RELIANCE UPON THIS RECORDED-DATA BY THE HEREIN NAMED COMPANY (AND ANY OF ITS AFFILIATES, PARTNERS, REPRESENTATIVES, AGENTS, CONSULTANTS AND EMPLOYEES) IS SUBJECT TO THE TERMS AND CONDITIONS AGREED UPON BETWEEN SCHLUMBERGER AND THE COMPANY, INCLUDING: (a) RESTRICTIONS ON USE OF THE RECORDED-DATA; (b) DISCLAIMERS AND WAIVERS OF WARRANTIES AND REPRESENTATIONS REGARDING COMPANY'S USE OF AND RELIANCE UPON THE RECORDED-DATA; AND (c) CUSTOMER'S FULL AND SOLE RESPONSIBILITY FOR ANY INFERENCE DRAWN OR DECISION MADE IN CONNECTION WITH THE USE OF THIS RECORDED-DATA.

OTHER SERVICES1
OS1: MSS, HRLA, APS
OS2: HNGS, FMS, HLDS
OS3: VSI

REMARKS: RUN NUMBER 1

Site U0080, client designation USC 080, was cored for exploration using the RCB system.
This site is subcontracted to Shell from LDEO, not a standard USIO/IODP site!
DSI Modes Recorded: Lower Dipole Std. Freq., Upper Dipole Low Freq., Stoneley, and P&S.
Tool centralized using modified MCD chasis as inline centralizers, as per tool sketch.
Logs recorded from Drill Floor, but played back with zero reference at sea bed for compatibility with core data.
Logs referenced to HRLA Resistivity from first run in this hole, recorded on 21 AUG 12.
Heave compensation was not required due to exceptionally calm sea state and favorable weather during logging.
TD was not tagged in order to avoid potention sticking risk associated with dropped RCB bit.
Downlog taken to be first pass with uplog taken to be second (main) pass in the interest of time.

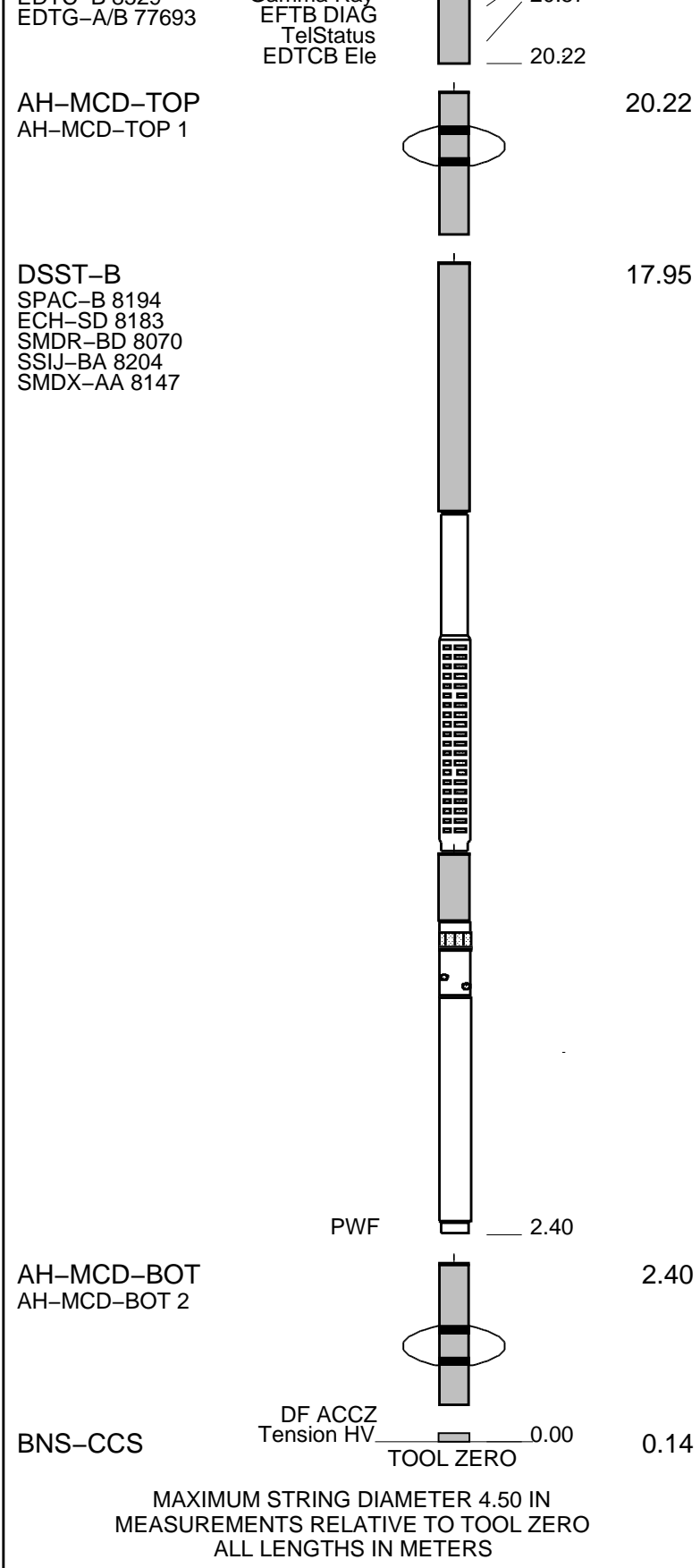
RUN 1			RUN 2		
SERVICE ORDER #:			SERVICE ORDER #:		
PROGRAM VERSION: 19C0-187			PROGRAM VERSION:		
FLUID LEVEL:			FLUID LEVEL:		
LOGGED INTERVAL	START	STOP	LOGGED INTERVAL	START	STOP

EQUIPMENT DESCRIPTION

RUN 1	RUN 2
SURFACE EQUIPMENT WITM (EDTS)-A	

RUN 1	RUN 2
DOWNHOLE EQUIPMENT	
LEH-MT LEH-MT 101	23.17
MDSB_EDTC Mud Tempe	22.21
EDTC-B EDTH-B 8528 EDTC-B 8529	22.21
CTEM Gamma Ray	21.14 20.57





MAXIMUM STRING DIAMETER 4.50 IN
MEASUREMENTS RELATIVE TO TOOL ZERO
ALL LENGTHS IN METERS

Production String	(in)	(m)	Well Schematic	(m)	(in)	Casing String
	OP	ID		MD	MD	

CD

ID

MD

MD

CD

ID

Kelly Bushing Elevation

Derrick Floor Elevation

Mean Sea Level

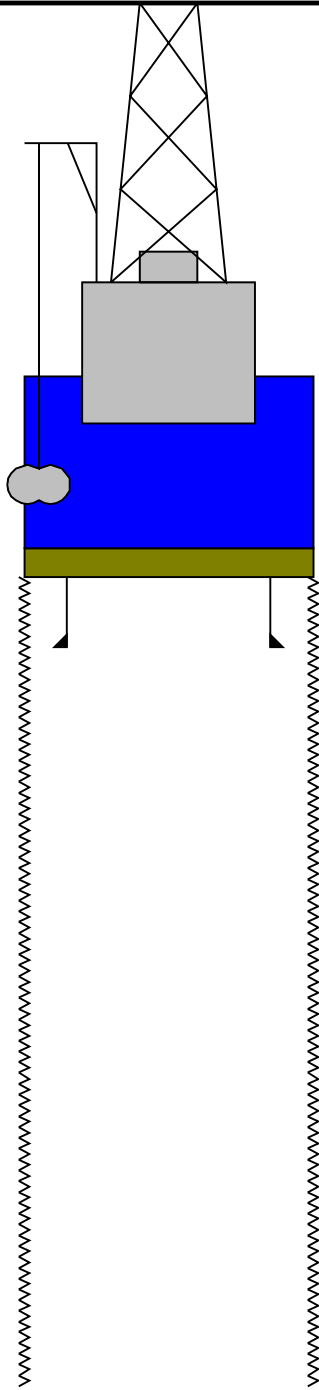
Seismic Gun depth below MSL

-234.0

-234.0

-223.0

7.0



0.0

31.0

358.5

9.875

Sea Bed

Pipe

TD - Driller

Schlumberger

Main Log

MAXIS Field Log

Input DLIS Files

DEFAULT	DSI_036LUP	FN:43	PRODUCER	22-Aug-2012 10:49	584.9 M	241.4 M
---------	------------	-------	----------	-------------------	---------	---------

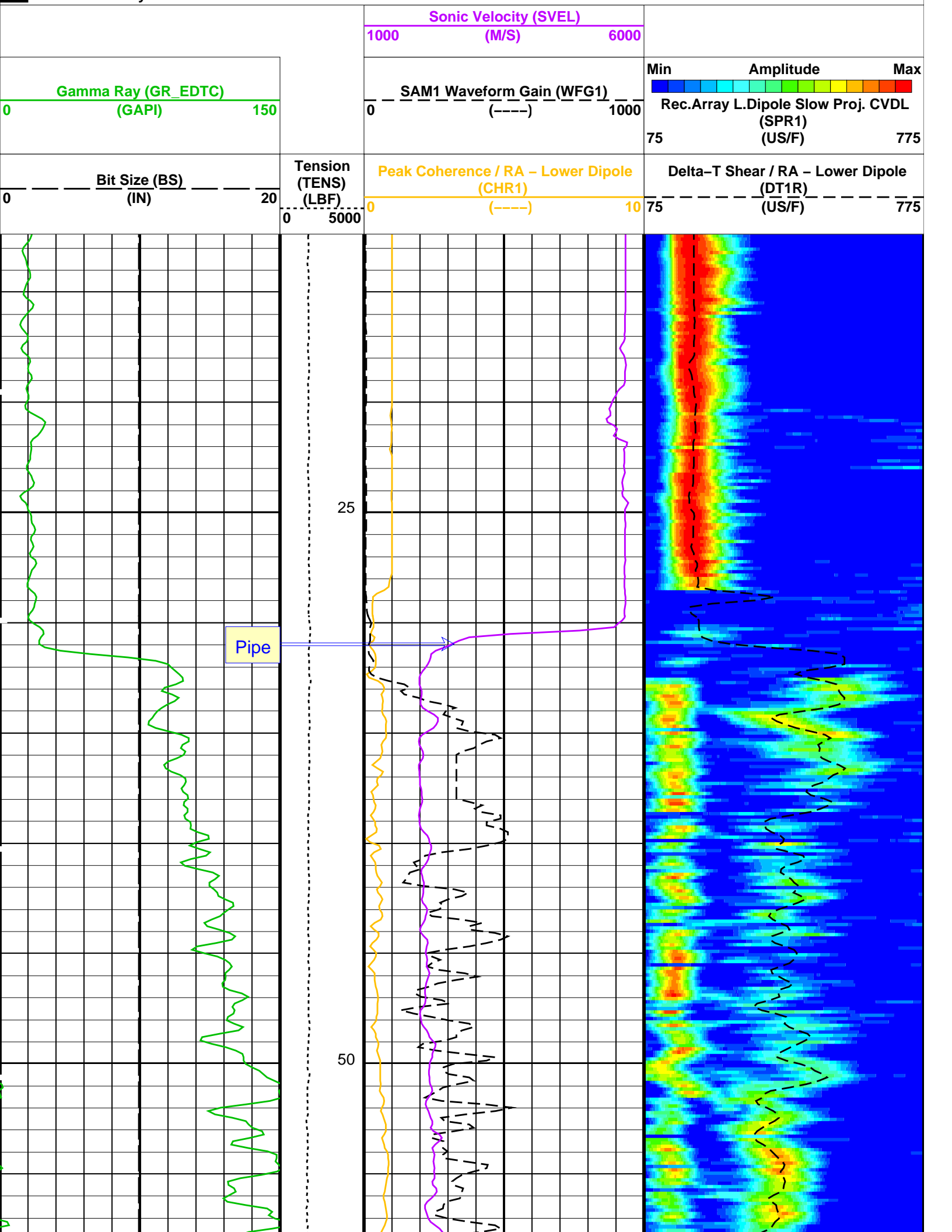
Output DLIS Files

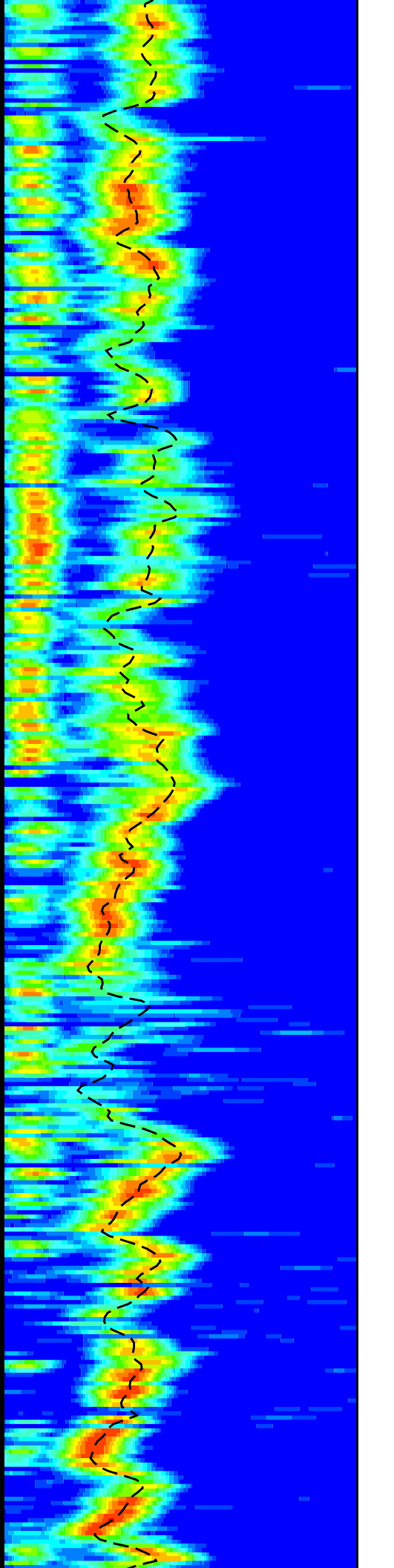
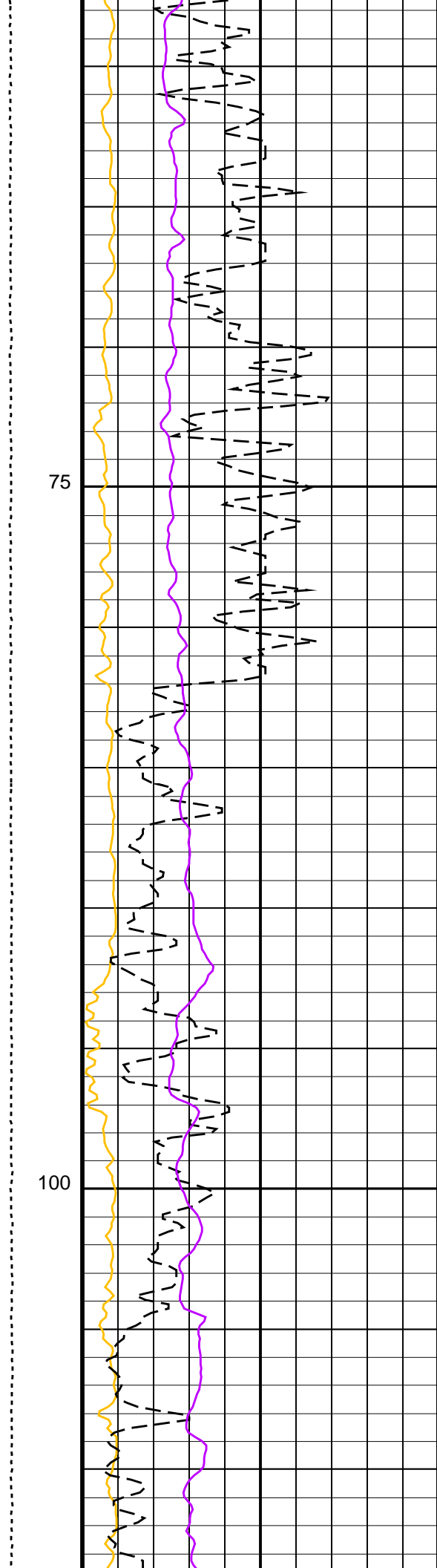
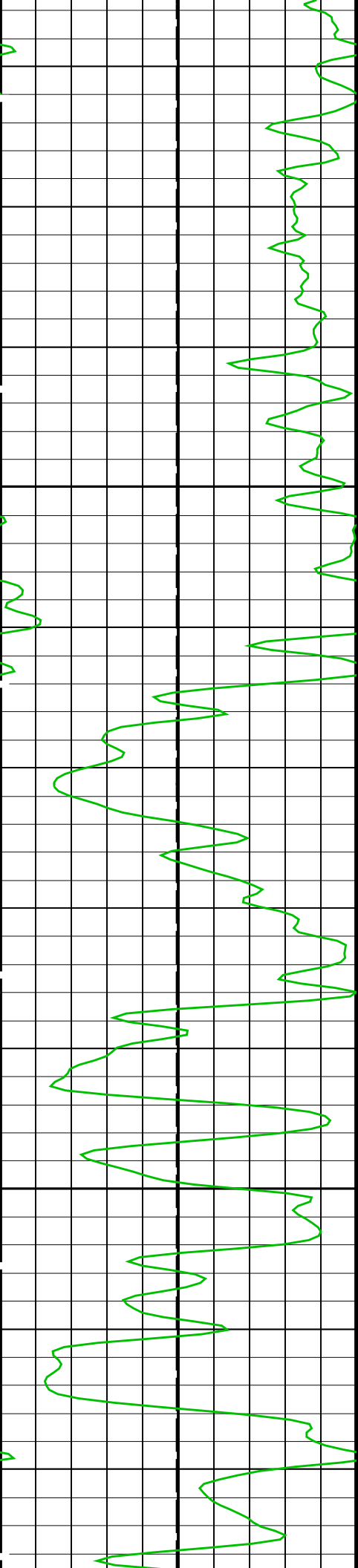
DEFAULT	DSI_072PUP	FN:89	PRODUCER	25-Aug-2012 13:33	355.9 M	12.3 M
CLIENT	DSI_072PUC	FN:90	CUSTOMER	25-Aug-2012 13:33	355.9 M	12.3 M

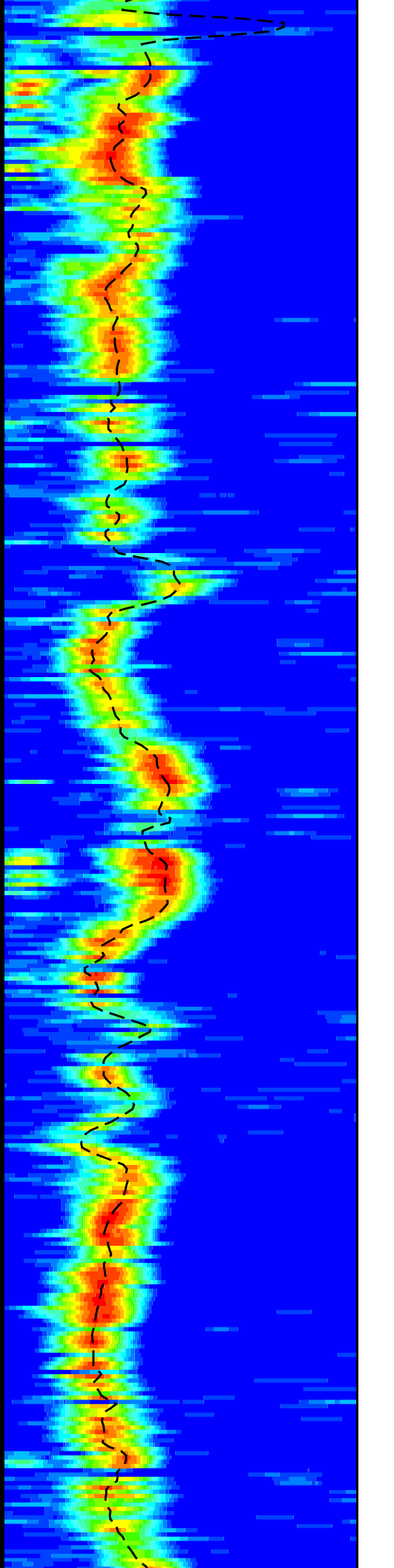
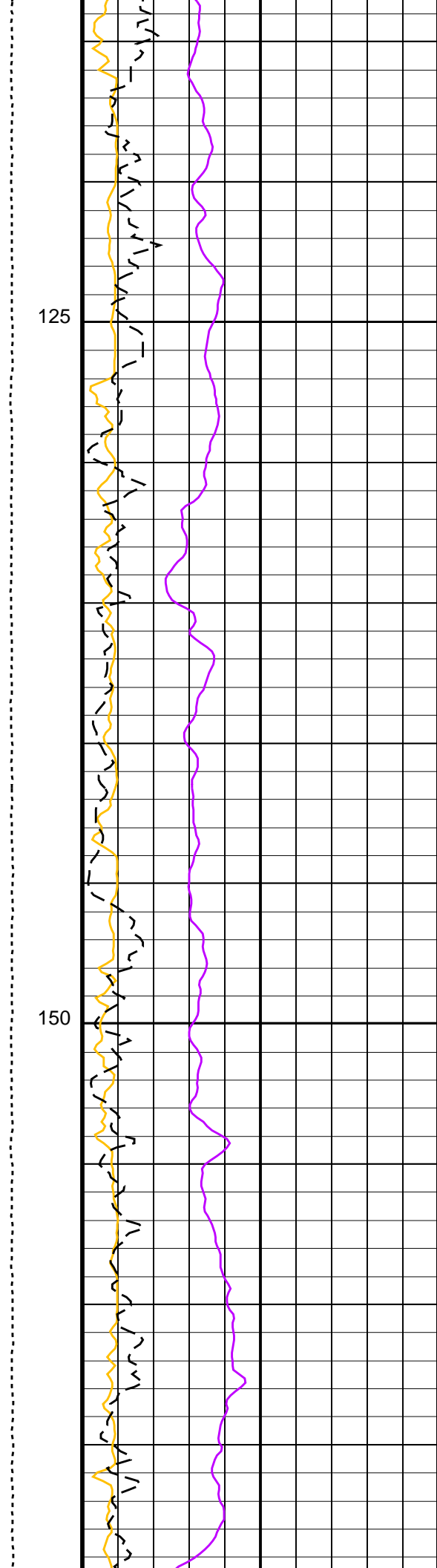
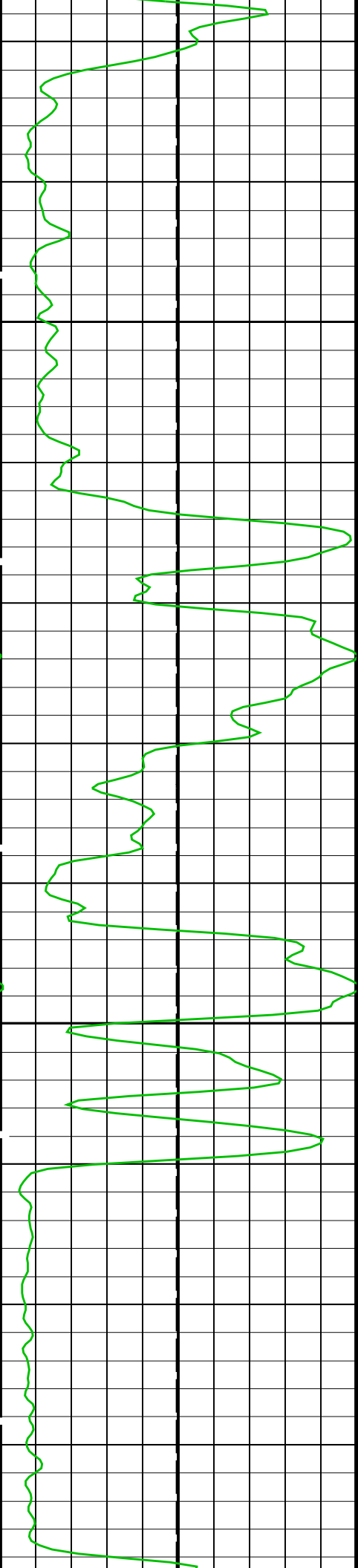
OP System Version: 19C0-187

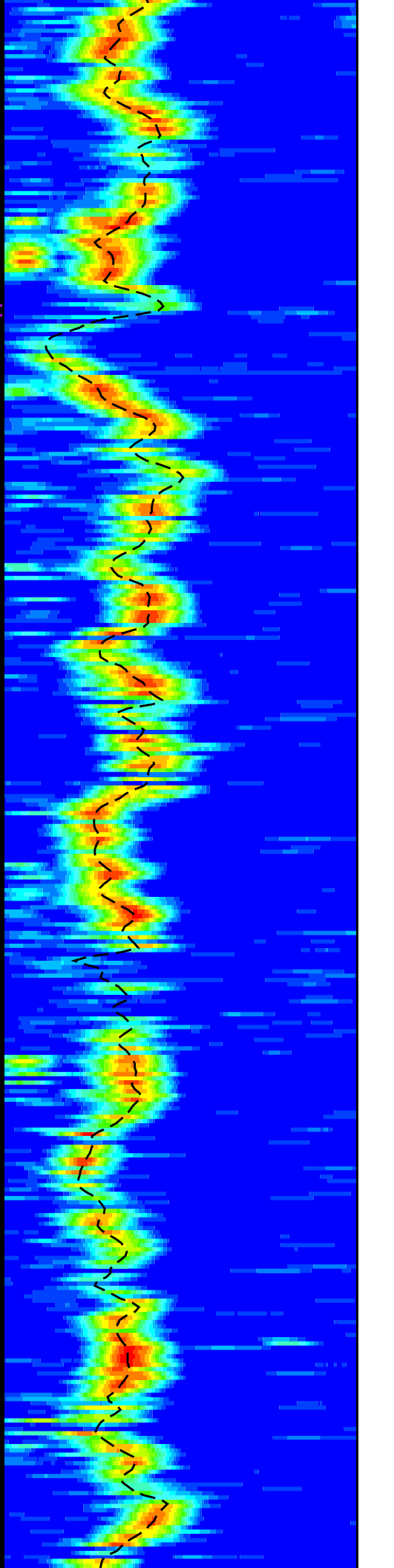
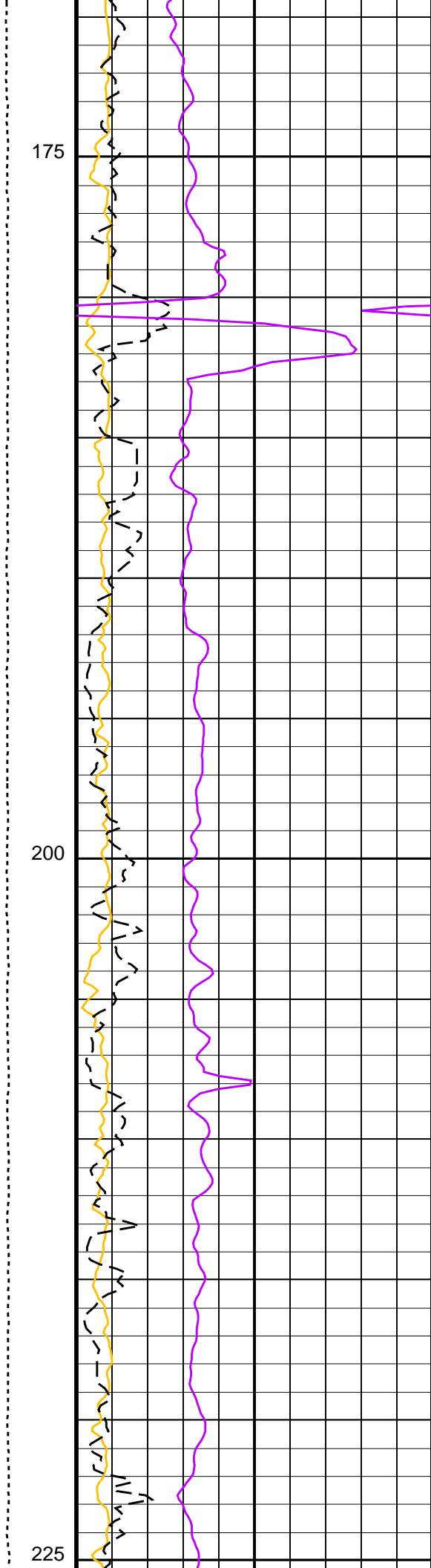
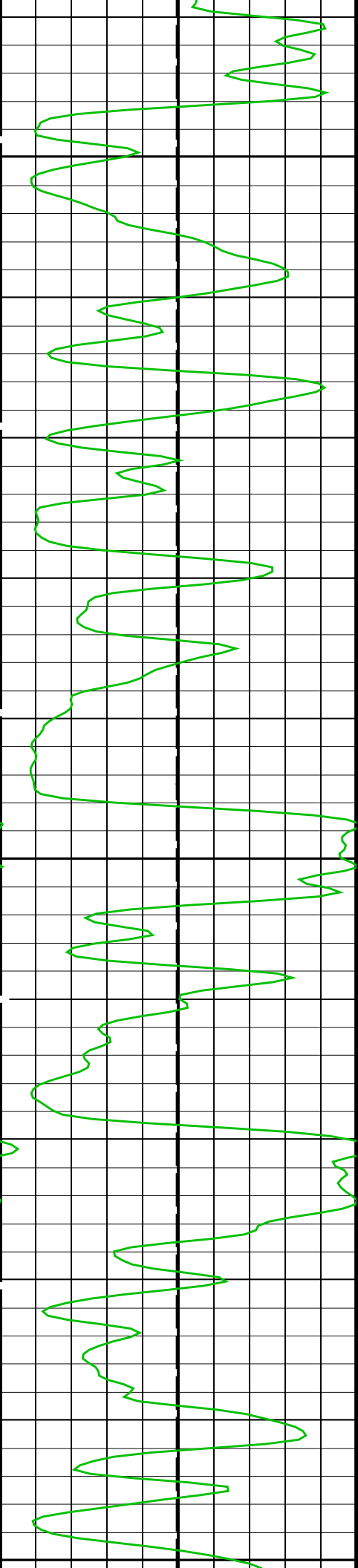
DSST-B	19C0-187	EDTC-B	SKK-5169-EDTCB
--------	----------	--------	----------------

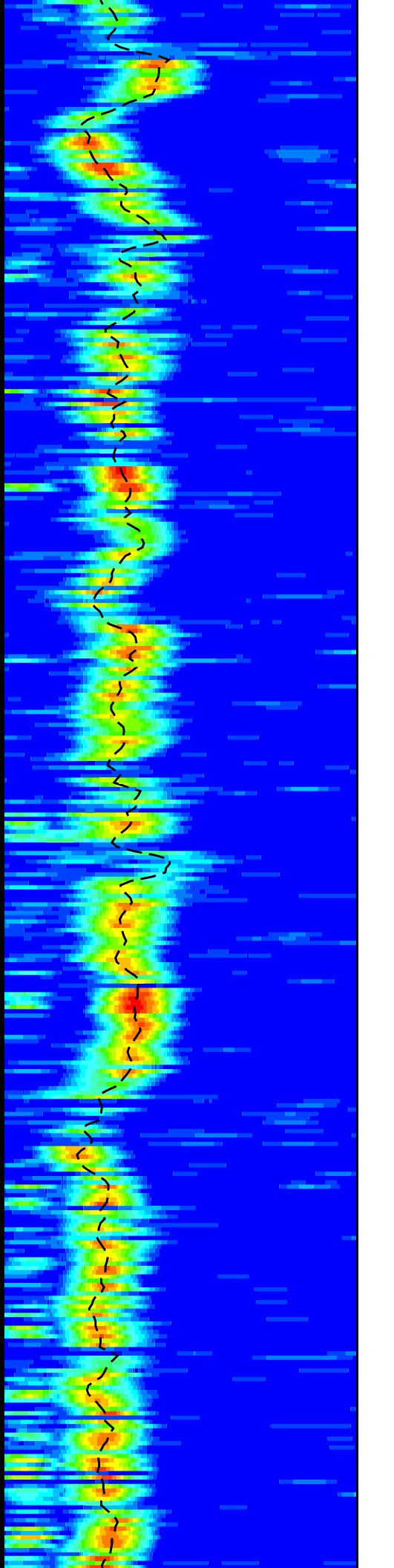
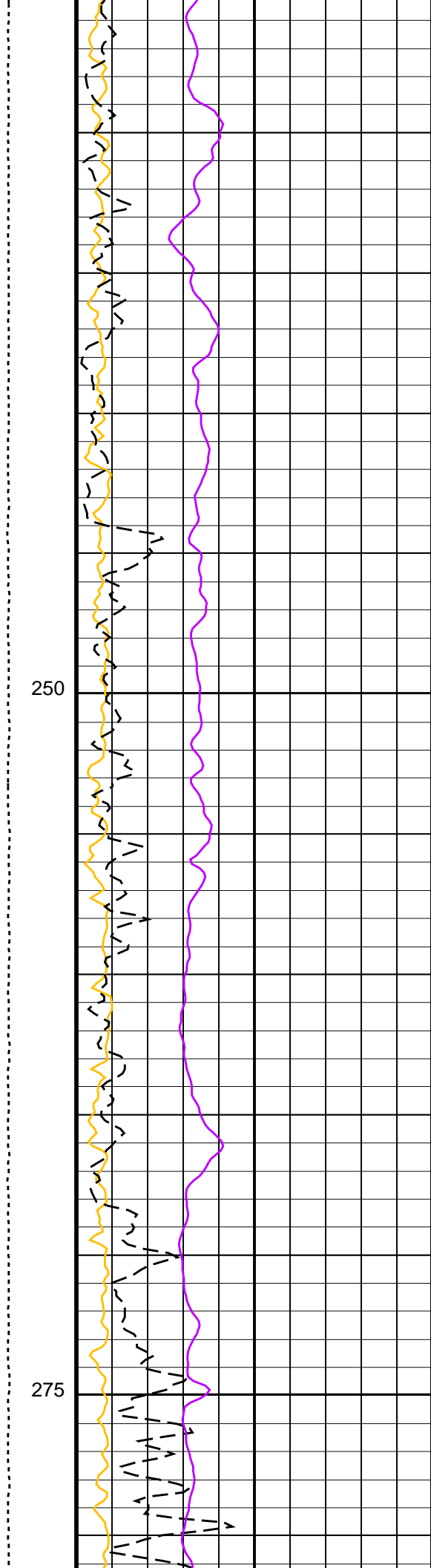
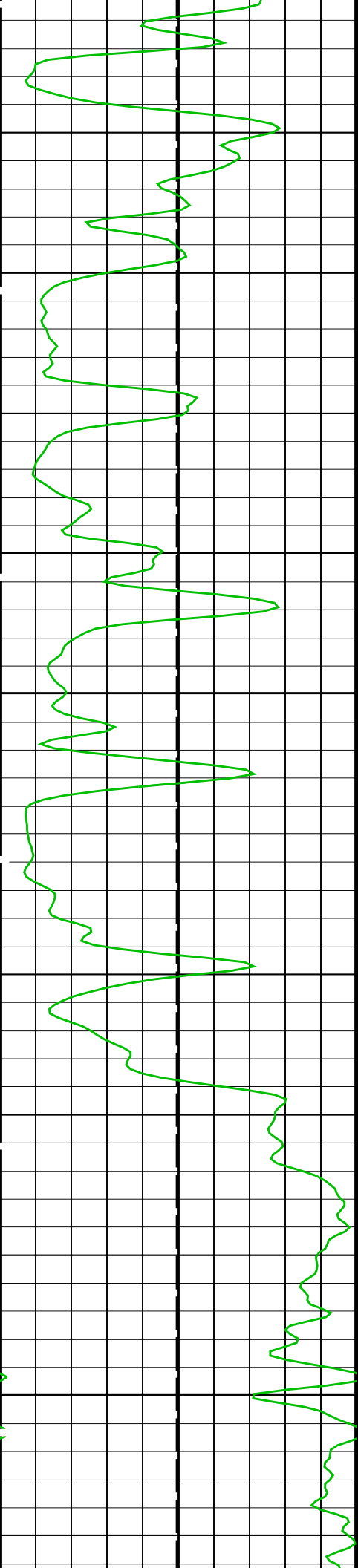
PIP SUMMARY

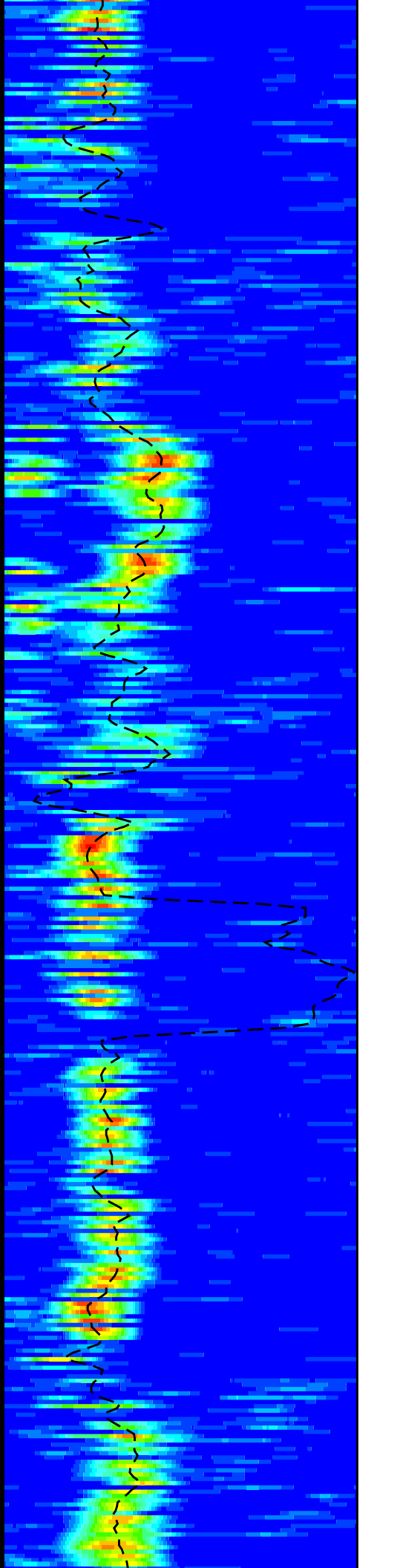
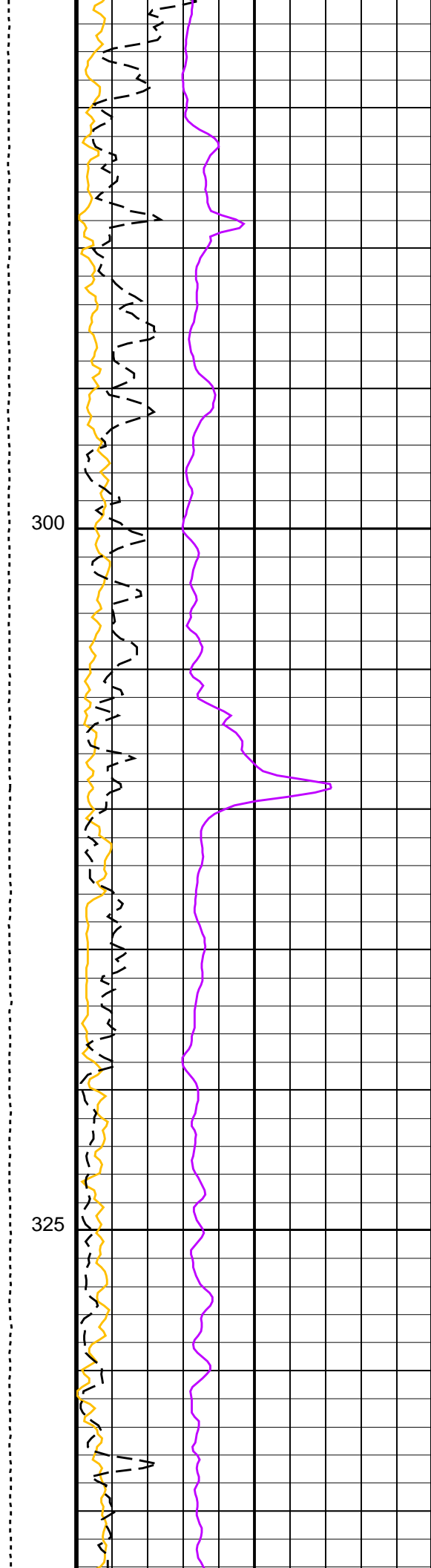
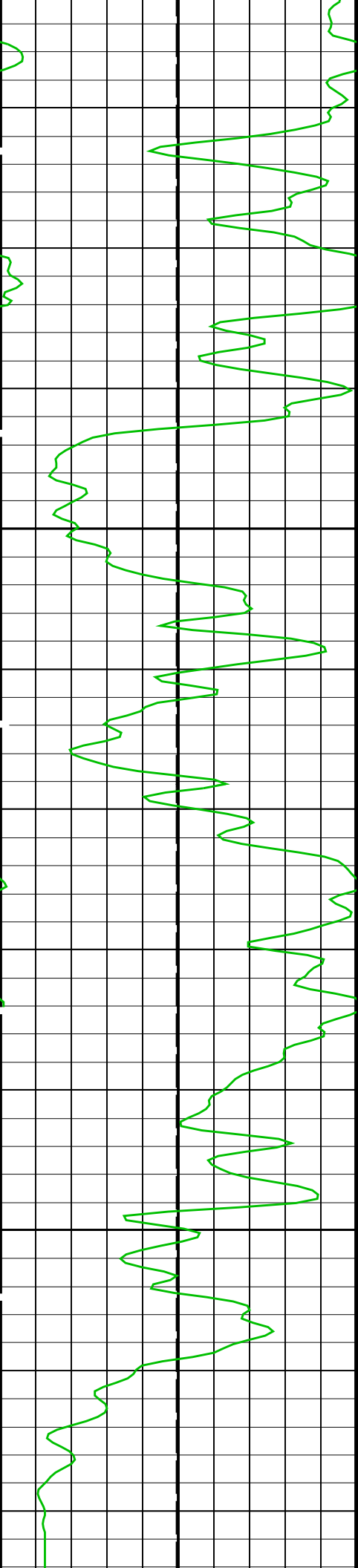


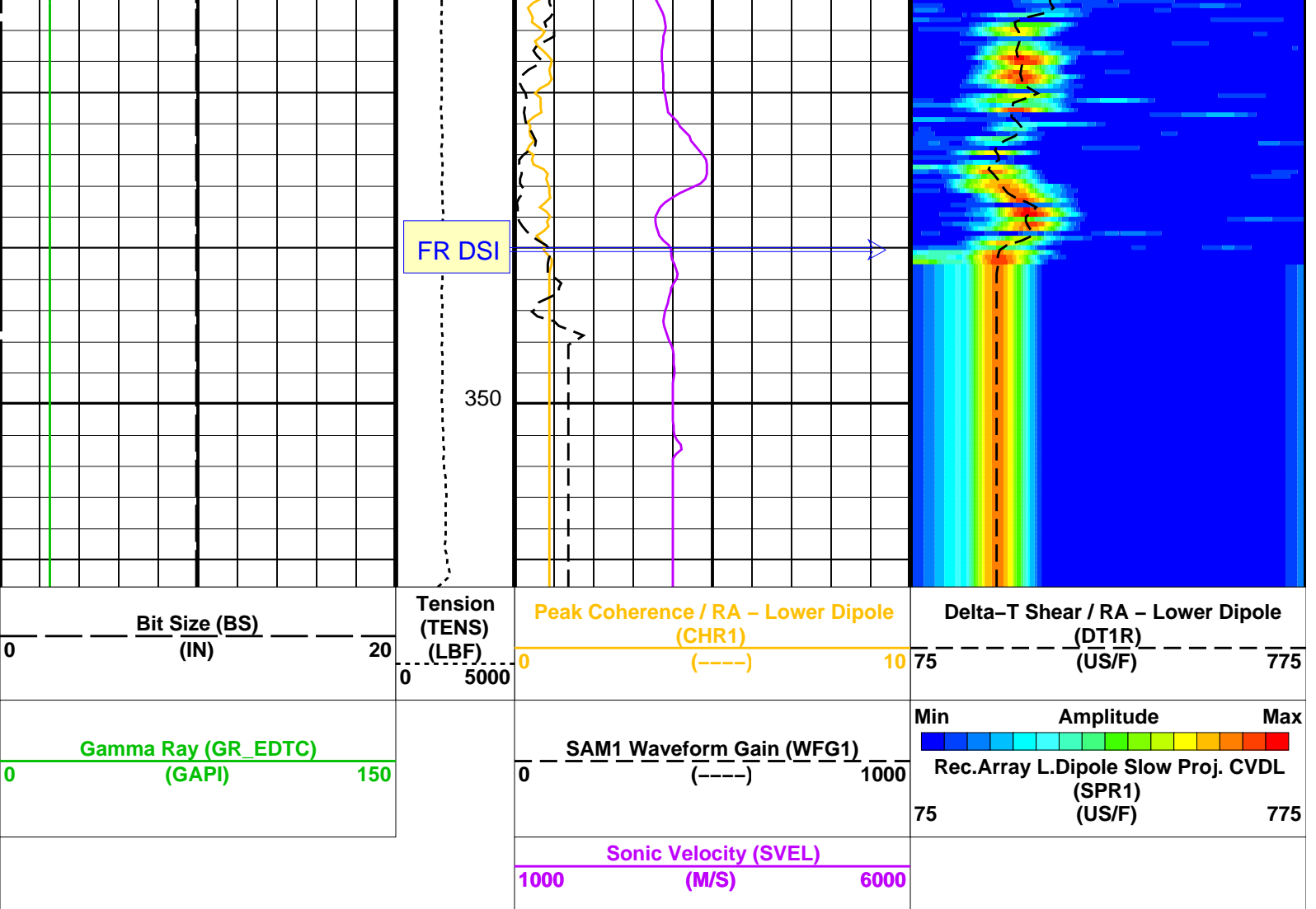












PIP SUMMARY

Time Mark Every 60 S

Parameters

DLIS Name	Description	Value
DSST-B: Dipole Shear Imager - B		
DDE1	Digitizing Delay 1	0 US
DDEX	Digitizing Delay X	0 US
DLCS	Label Compressional Source - Dipole Shear	USE
DSHL	Label Slowness Lower Limit - Dipole Shear	75 US/F
DSHU	Label Slowness Upper Limit - Dipole Shear	775 US/F
DSI1	Digitizer Sample Interval 1	40 US
DSIX	Digitizer Sample Interval X	40 US
DTCS	Compressional Delta-T Source for DTCO Channel	PS_COMP
DWC1	Digitizer Word Count 1	512
DWCX	Digitizer Word Count X	512
LTXG	Lower Dipole Transmitter Geometry	156 IN
NW11	Number Waveform Items 1	8
NW1X	Number Waveform Items X	0
RX1G	Receiver 1 Geometry	294 IN
RX2G	Receiver 2 Geometry	300 IN
RX3G	Receiver 3 Geometry	306 IN
RX4G	Receiver 4 Geometry	312 IN
RX5G	Receiver 5 Geometry	318 IN
RX6G	Receiver 6 Geometry	324 IN
RX7G	Receiver 7 Geometry	330 IN
RX8G	Receiver 8 Geometry	336 IN
SAM1	DSST Sonic Acquisition Mode 1 - Lower Dipole Mode	EVEN
SAMX	DSST Sonic Acquisition Mode X - Both Dipoles or Monopole Mode for Expert	OFF
SAS1	STC Sonic Array Status - Lower Dipole	255
SBO1	STC Search Band Offset - Lower Dipole	3000 US
SBW1	STC Search Bandwidth - Lower Dipole	8000 US
SFC1	STC Formation Character - Lower Dipole	SELECTABLE
SFM1	STC Filter - Lower Dipole	B1-3K
SLL1	STC Slowness Lower Limit - Lower Dipole	75 US/F
SST1	STC Slowness Step - Lower Dipole	1 US/F

SSW1	STC Slowness Step - Lower Dipole	4	US/F
SUL1	STC Source Waveform - Lower Dipole	775	US/F
SWD1	STC Slowness Width - Lower Dipole	40	US/F
TBF1	STC Time for Baseline Fill - Lower Dipole	0	US
TLL1	STC Time Lower Limit - Lower Dipole	600	US
TST1	STC Time Step - Lower Dipole	200	US
TUL1	STC Time Upper Limit - Lower Dipole	15912.5	US
TWD1	STC Time Width - Lower Dipole	2000	US
TWI1	STC Integration Time Window - Lower Dipole	1600	US
TWSX	Transmitter Waveform Select X	0	
WFM1	Waveform Mode 1	W1	
System and Miscellaneous			
BS	Bit Size	9.875	IN
DO	Depth Offset for Playback	-229.0	M
PP	Playback Processing	NORMAL	

Format: DSST_LOWER_DIPOLE_VDL_COLOR Vertical Scale: 1:200 Graphics File Created: 25-Aug-2012 13:33

OP System Version: 19C0-187

DSST-B 19C0-187 EDTC-B SKK-5169-EDTCB

Input DLIS Files

DEFAULT	DSI_036LUP	FN:43	PRODUCER	22-Aug-2012 10:49	584.9 M	241.4 M
---------	------------	-------	----------	-------------------	---------	---------

Output DLIS Files

DEFAULT	DSI_072PUP	FN:89	PRODUCER	25-Aug-2012 13:33		
CLIENT	DSI_072PUC	FN:90	CUSTOMER	25-Aug-2012 13:33		



MAXIS Field Log

Input DLIS Files

DEFAULT	Flip_DSI_071LUP		PRODUCER	25-Aug-2012 13:33	582.3 M	202.8 M
---------	-----------------	--	----------	-------------------	---------	---------

Output DLIS Files

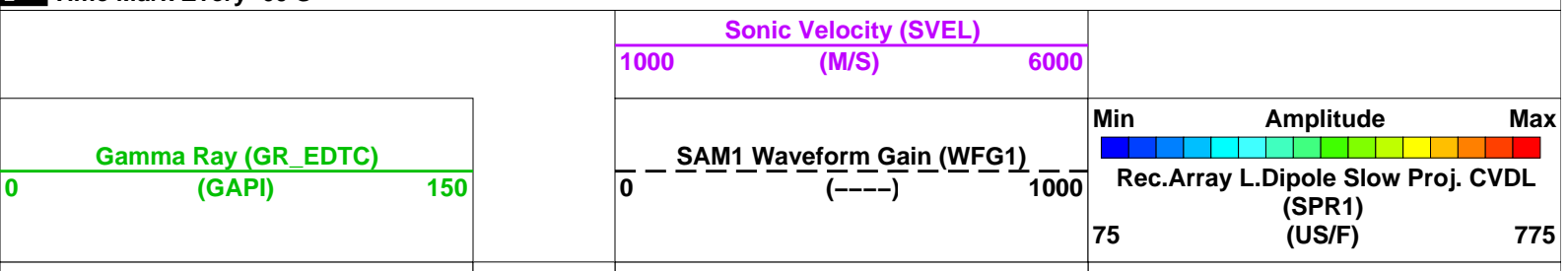
DEFAULT	DSI_073PUP	FN:91	PRODUCER	25-Aug-2012 13:35	353.3 M	-26.2 M
CLIENT	DSI_073PUC	FN:92	CUSTOMER	25-Aug-2012 13:35	353.3 M	-26.2 M

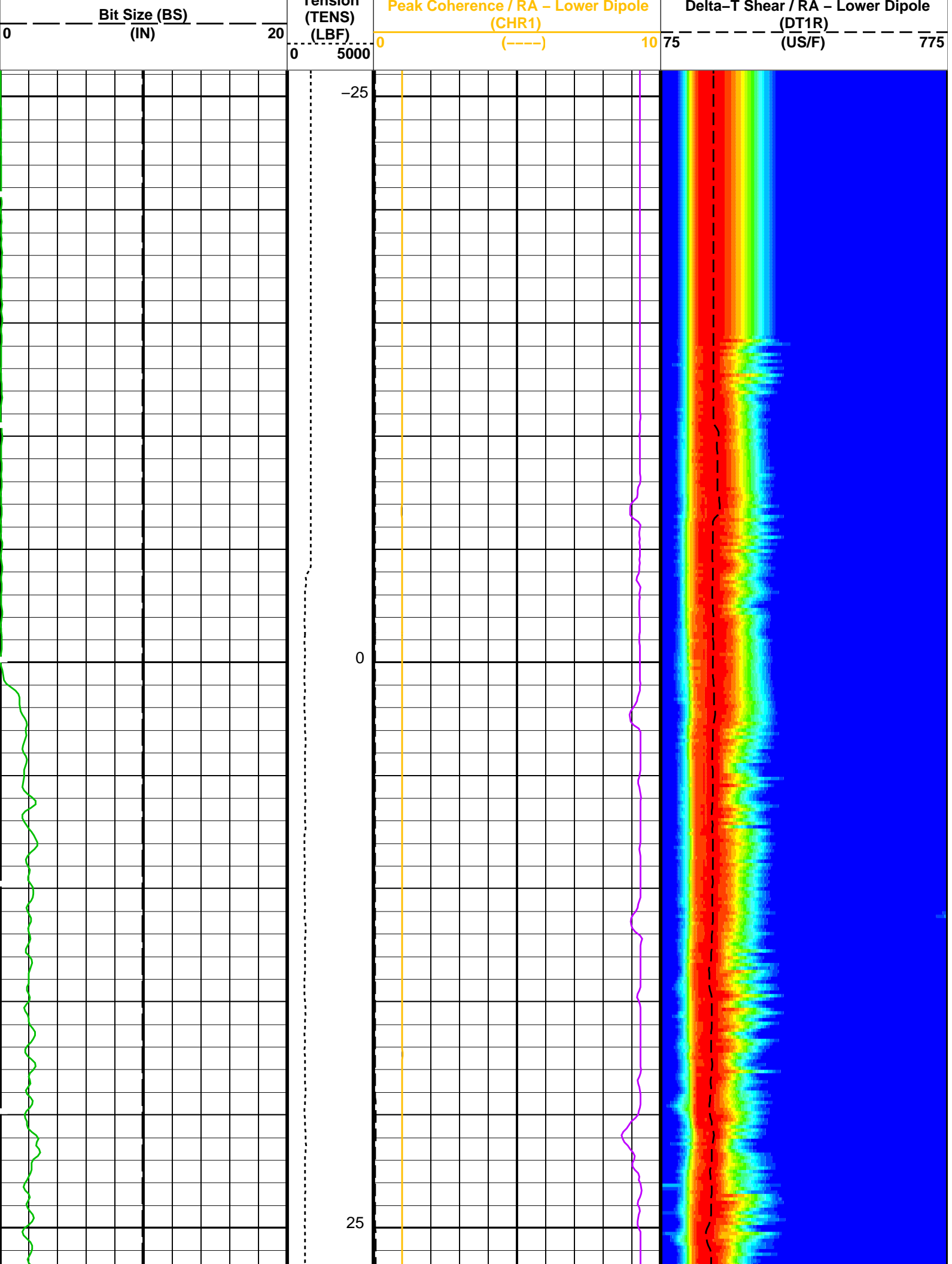
OP System Version: 19C0-187

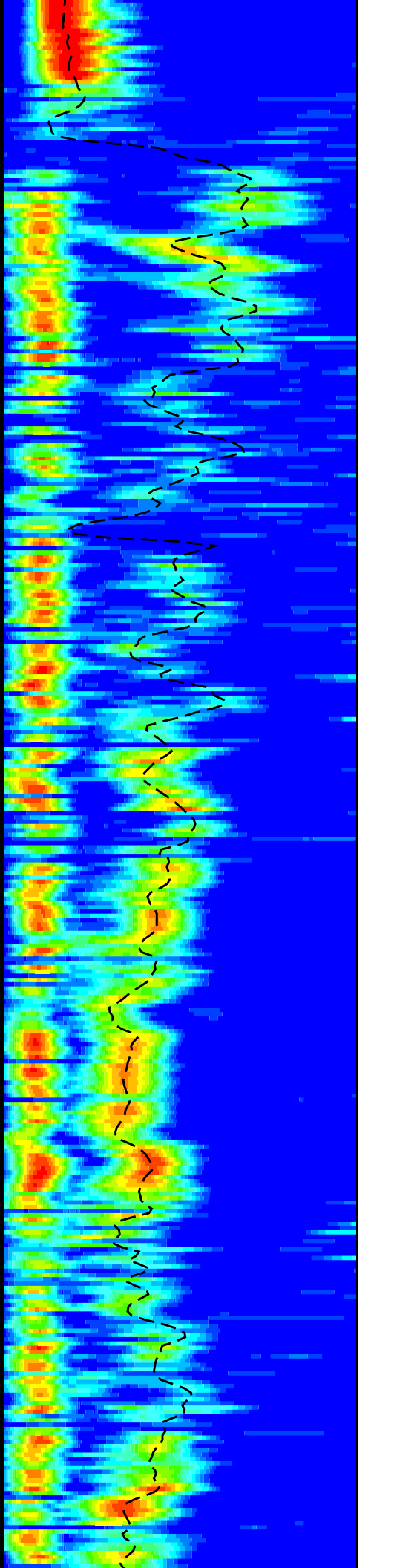
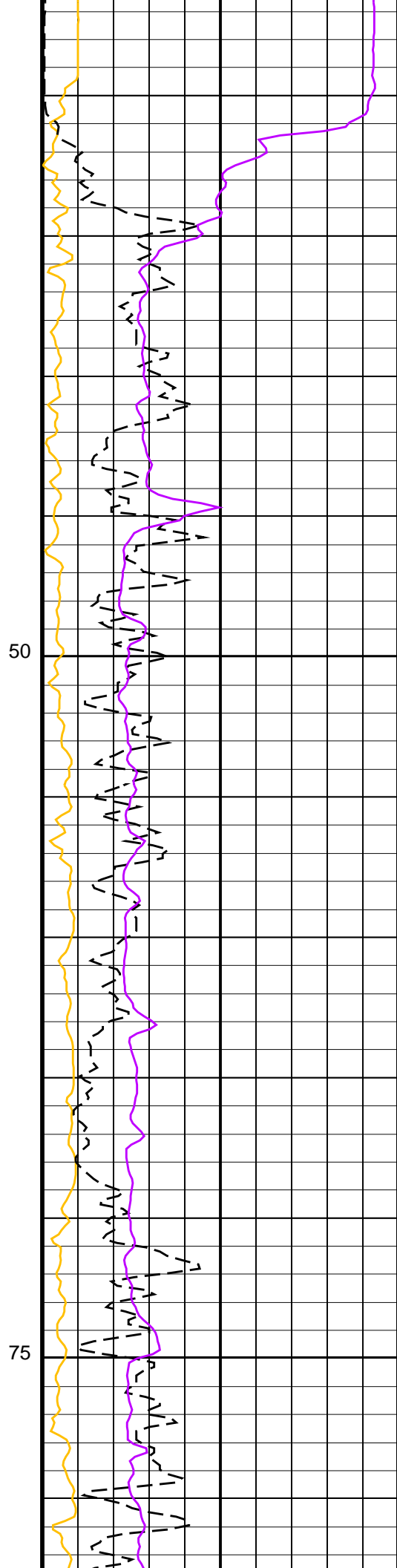
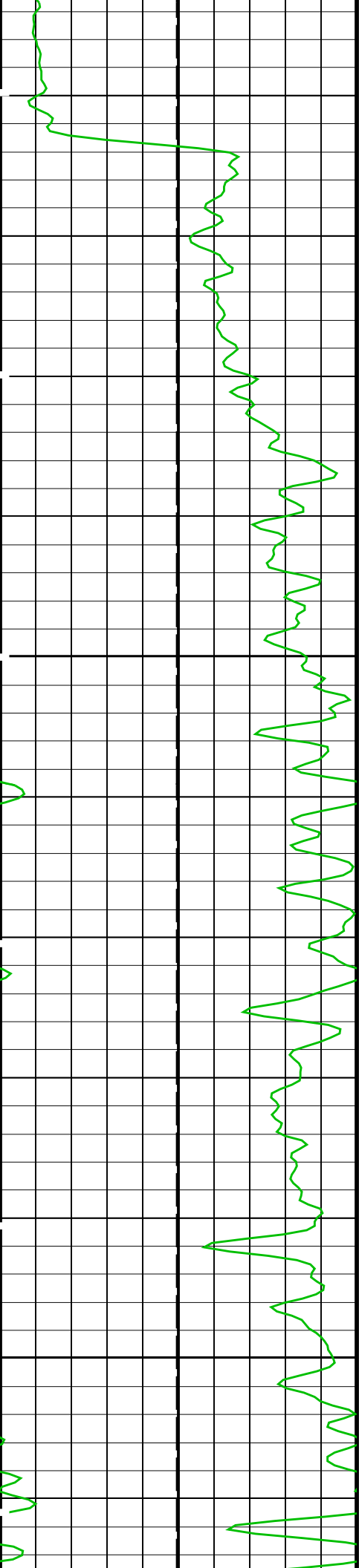
DSST-B 19C0-187 EDTC-B SKK-5169-EDTCB

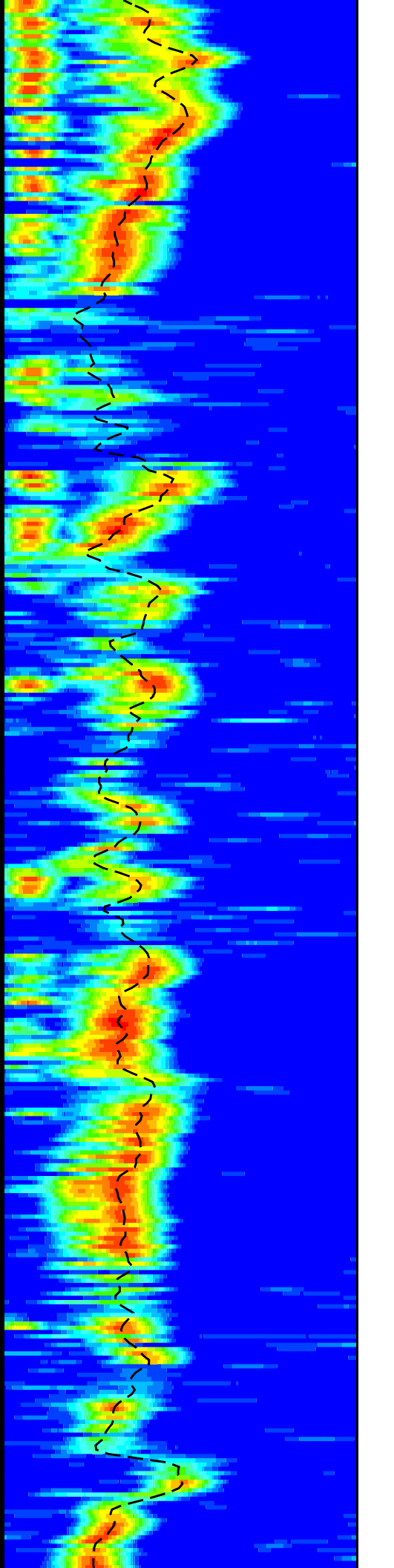
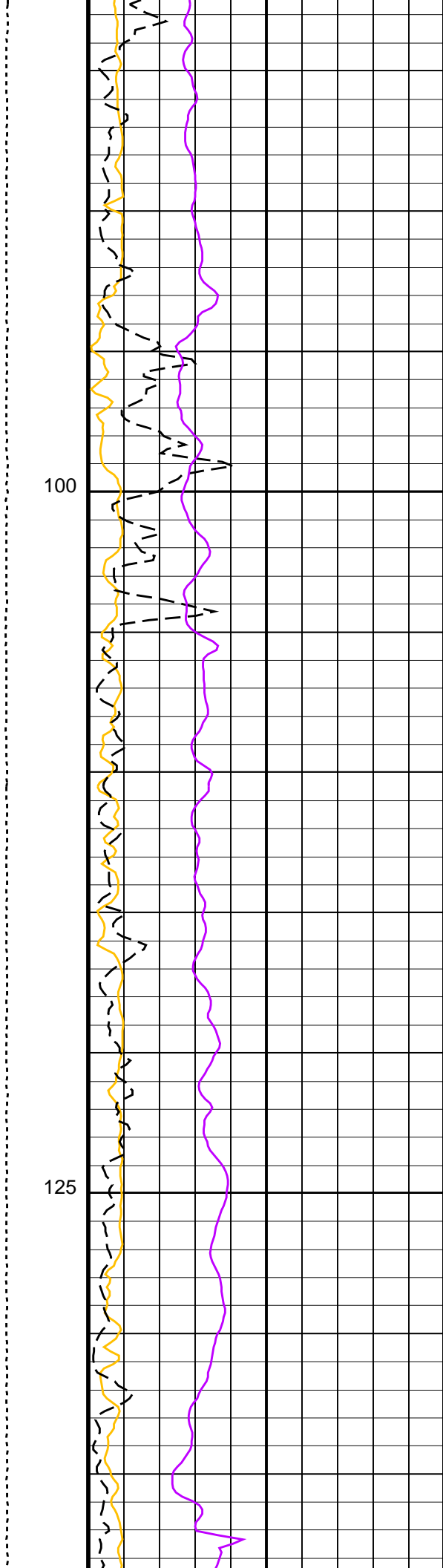
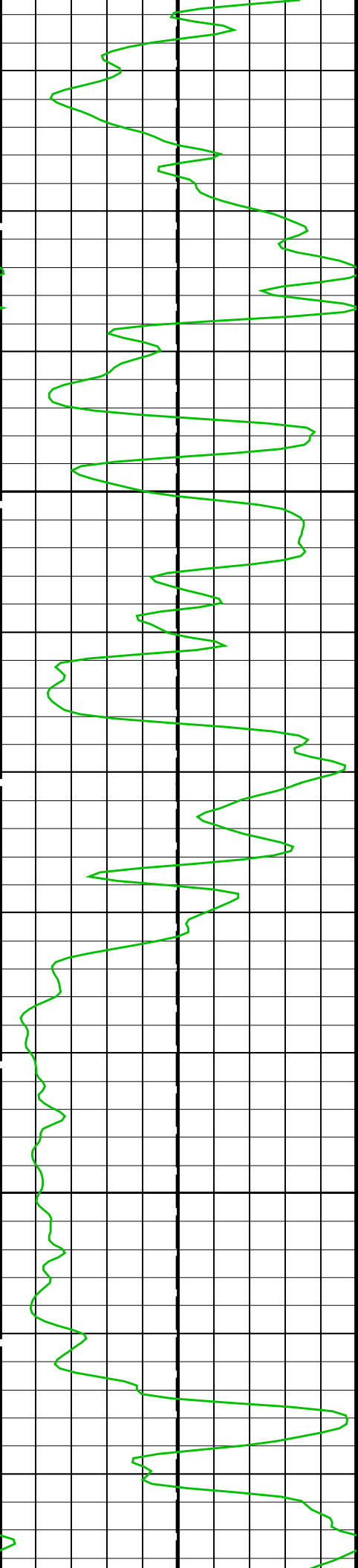
PIP SUMMARY

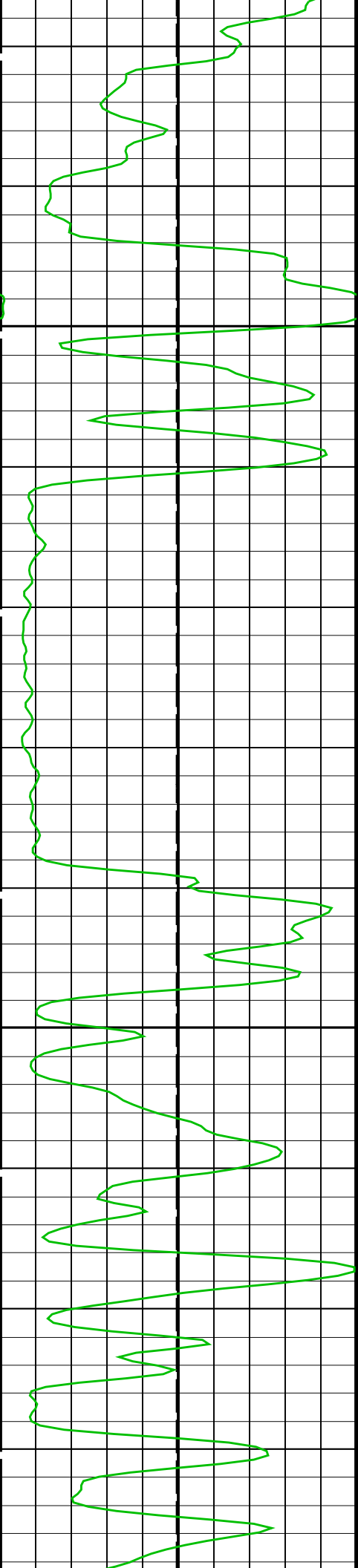
Time Mark Every 60 S





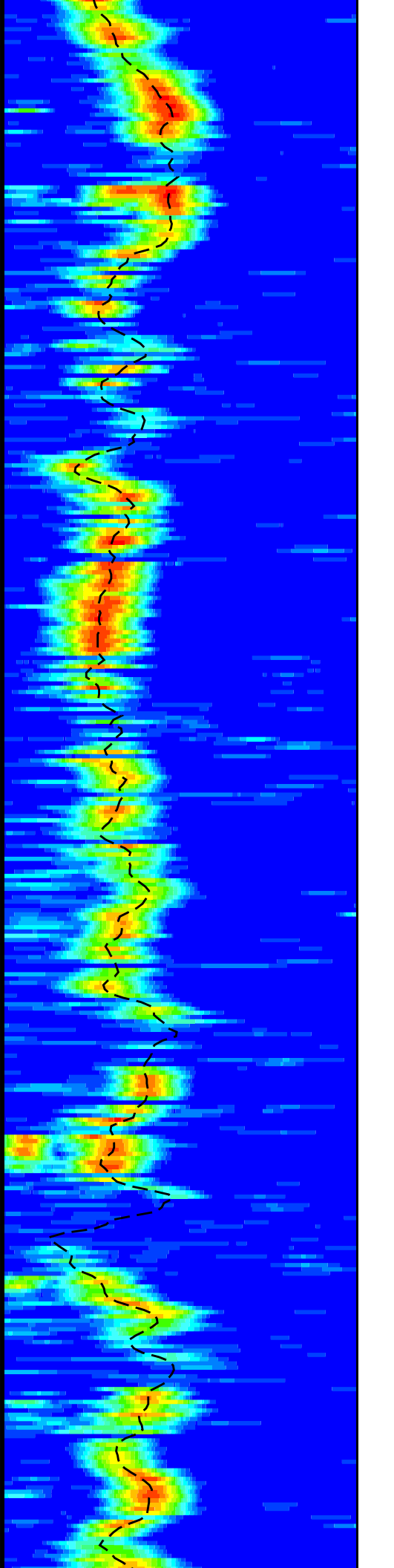
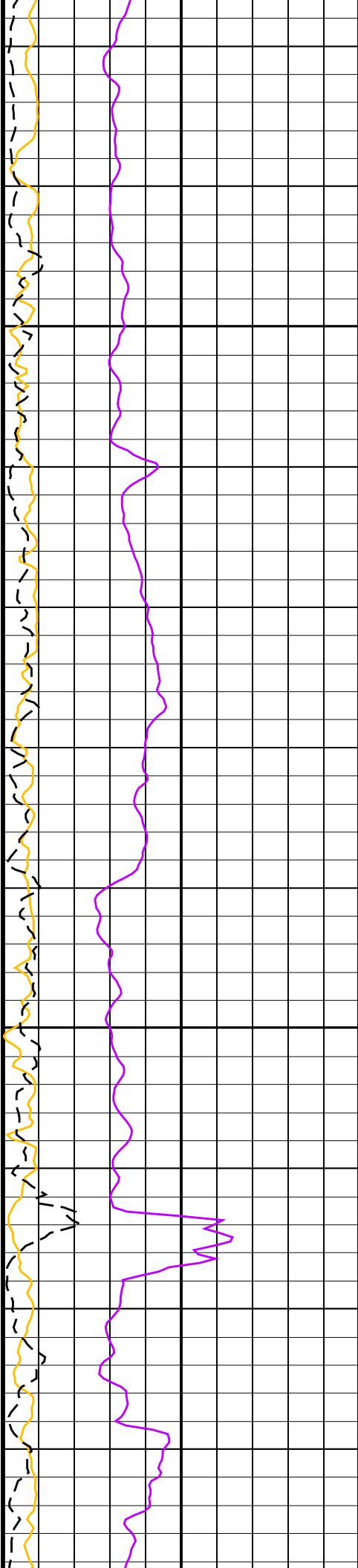


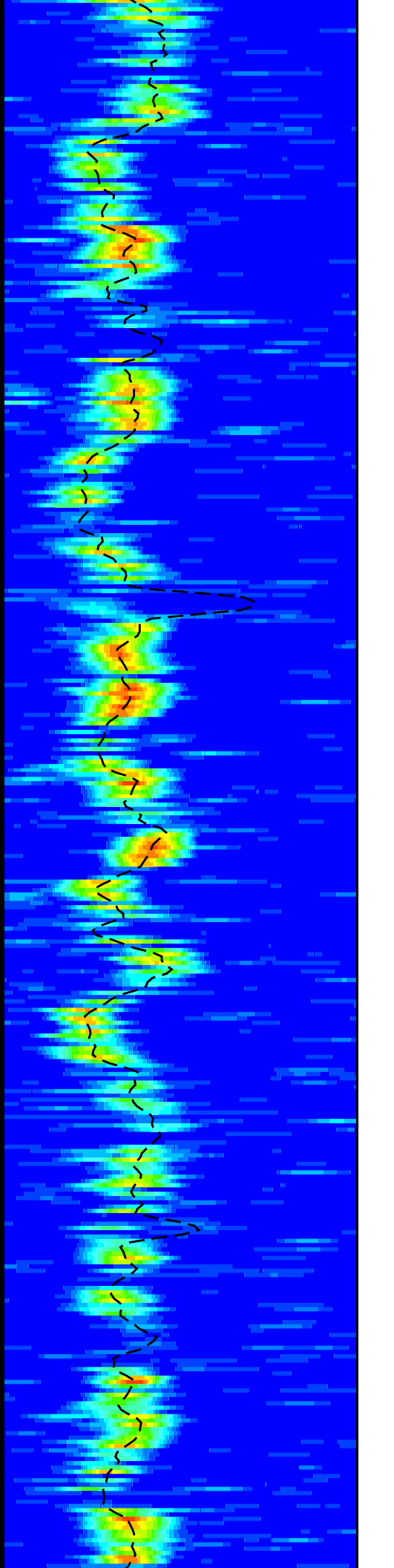
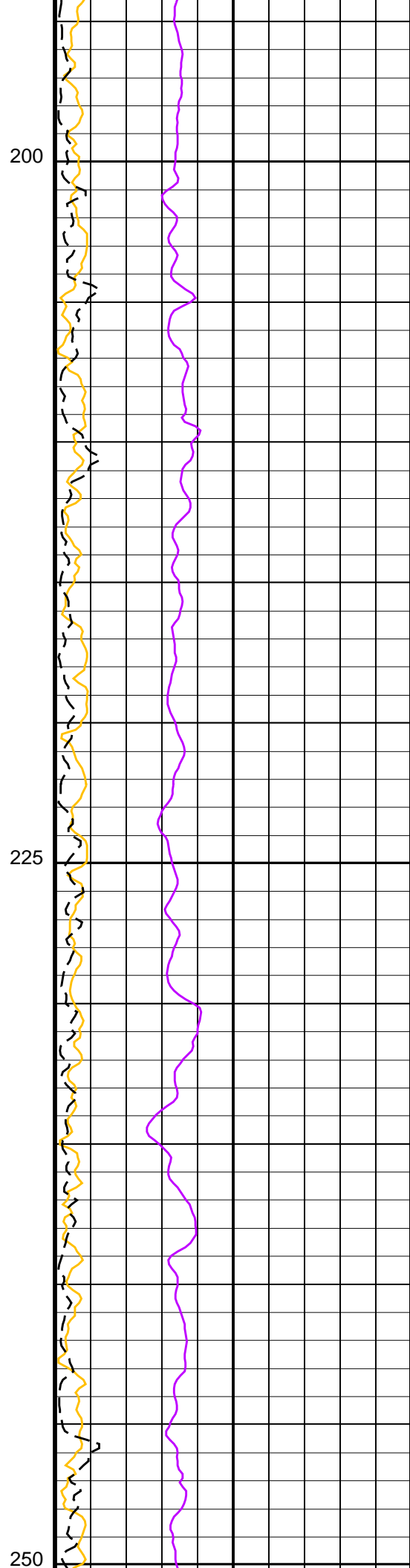
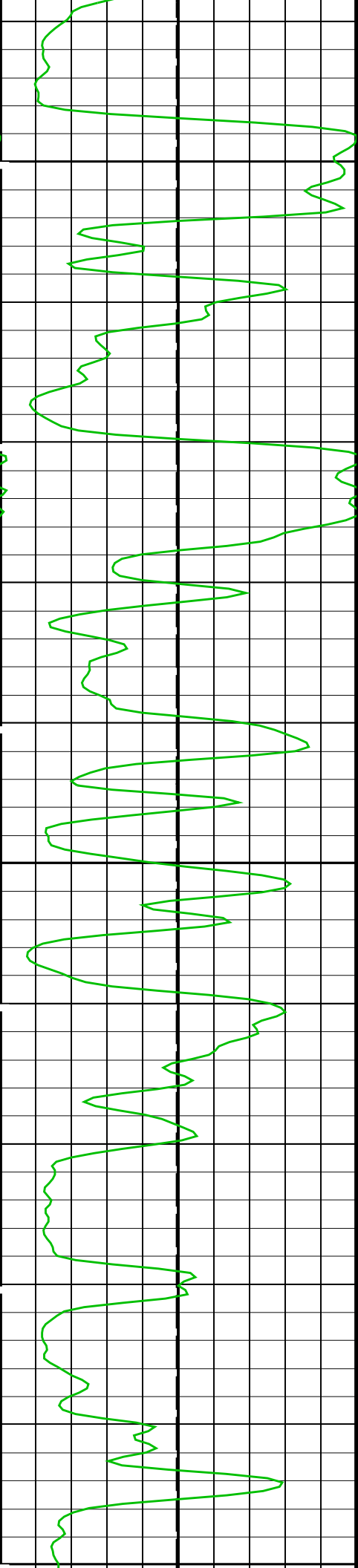


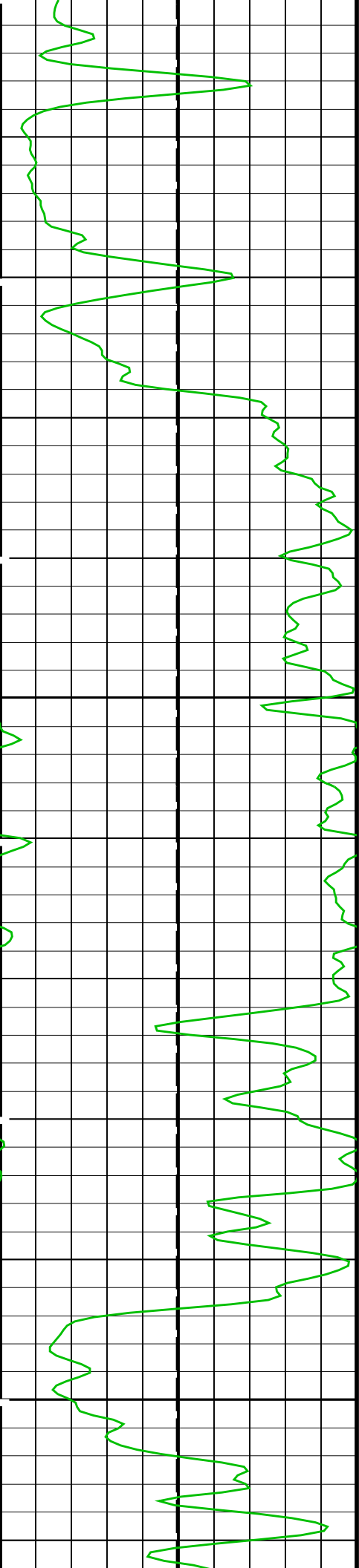


150

175

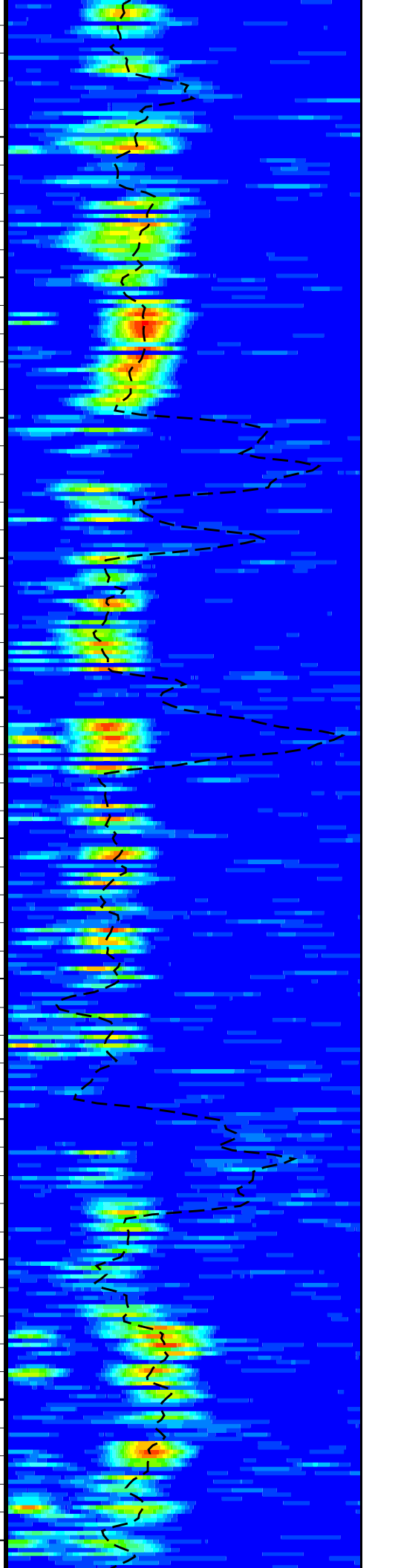
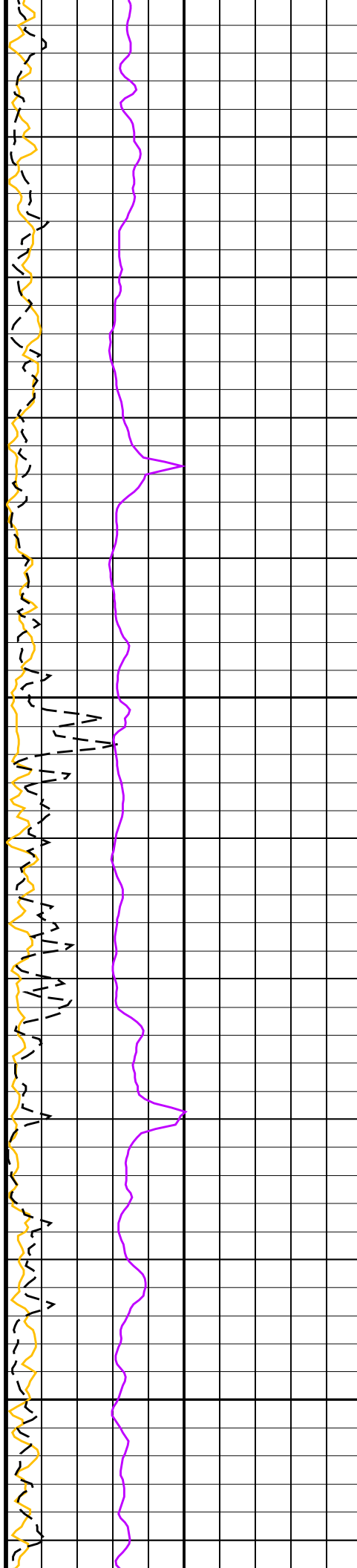


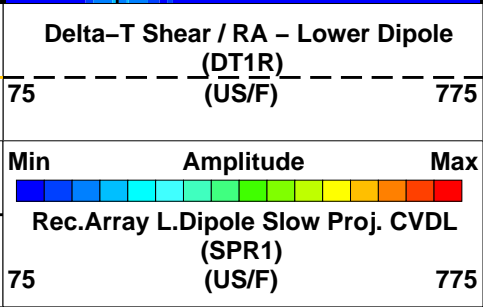
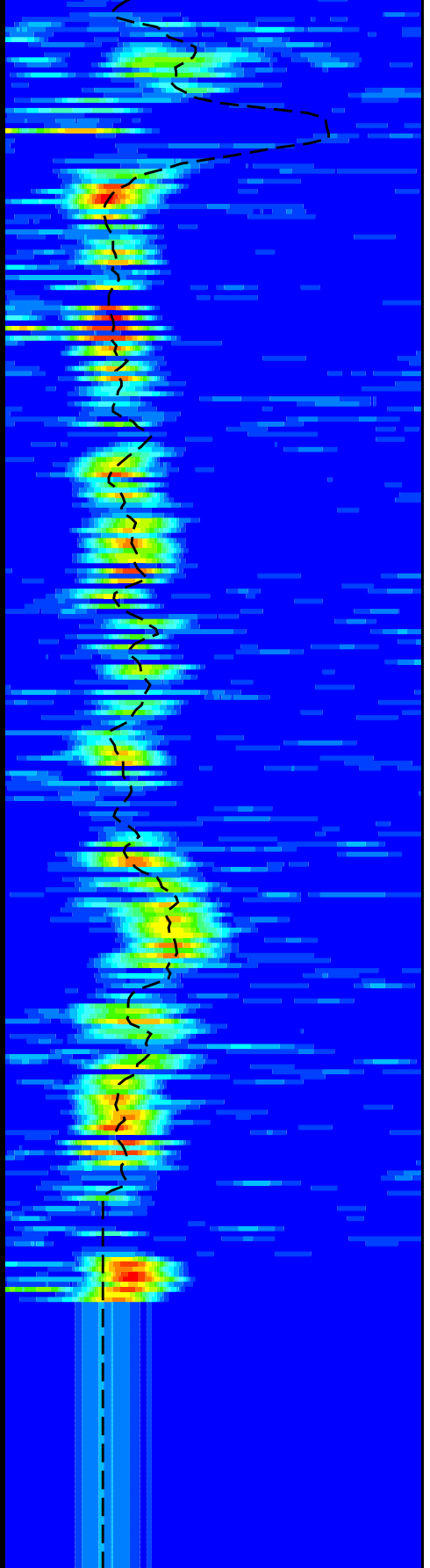
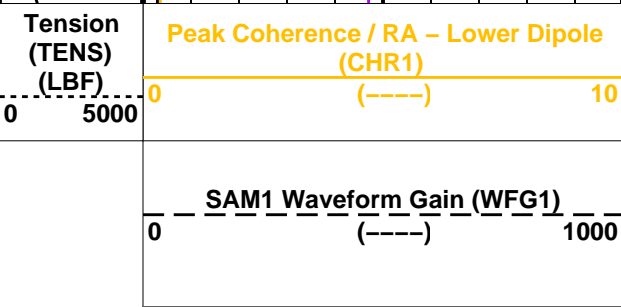
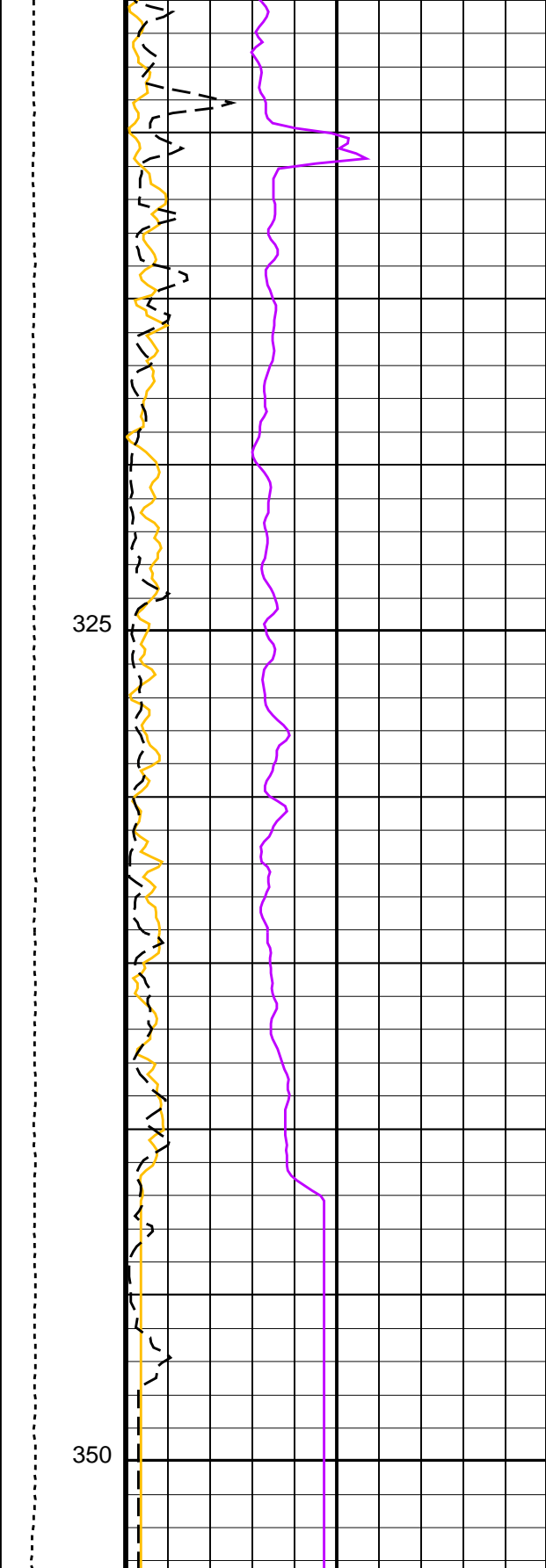
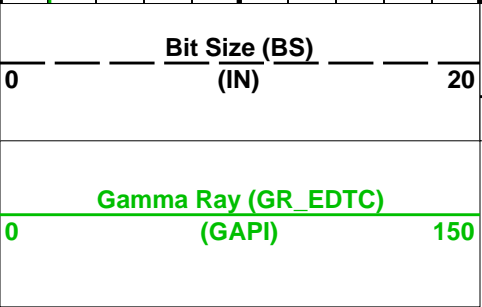
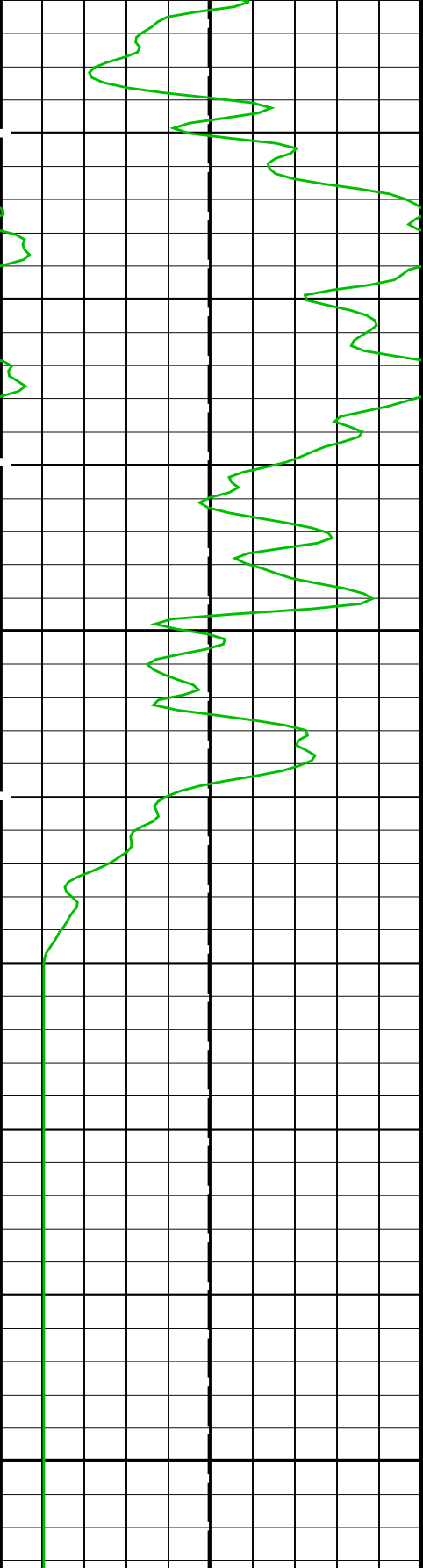




275

300





PIP SUMMARY

Time Mark Every 60 S

Parameters

DLIS Name	Description	Value	
DSST-B: Dipole Shear Imager – B			
DDE1	Digitizing Delay 1	0	US
DDEX	Digitizing Delay X	0	US
DLCS	Label Compressional Source – Dipole Shear	USE	
DSHL	Label Slowness Lower Limit – Dipole Shear	75	US/F
DSHU	Label Slowness Upper Limit – Dipole Shear	775	US/F
DSI1	Digitizer Sample Interval 1	40	US
DSIX	Digitizer Sample Interval X	40	US
DTCS	Compressional Delta-T Source for DTCO Channel	PS_COMP	
DWC1	Digitizer Word Count 1	512	
DWCX	Digitizer Word Count X	512	
LTXG	Lower Dipole Transmitter Geometry	156	IN
NWI1	Number Waveform Items 1	8	
NWIX	Number Waveform Items X	0	
RX1G	Receiver 1 Geometry	294	IN
RX2G	Receiver 2 Geometry	300	IN
RX3G	Receiver 3 Geometry	306	IN
RX4G	Receiver 4 Geometry	312	IN
RX5G	Receiver 5 Geometry	318	IN
RX6G	Receiver 6 Geometry	324	IN
RX7G	Receiver 7 Geometry	330	IN
RX8G	Receiver 8 Geometry	336	IN
SAM1	DSST Sonic Acquisition Mode 1 – Lower Dipole Mode	EVEN	
SAMX	DSST Sonic Acquisition Mode X – Both Dipoles or Monopole Mode for Expert	OFF	
SAS1	STC Sonic Array Status – Lower Dipole	255	
SBO1	STC Search Band Offset – Lower Dipole	3000	US
SBW1	STC Search Bandwidth – Lower Dipole	8000	US
SFC1	STC Formation Character – Lower Dipole	SELECTABLE	
SFM1	STC Filter – Lower Dipole	B1-3K	
SLL1	STC Slowness Lower Limit – Lower Dipole	75	US/F
SST1	STC Slowness Step – Lower Dipole	4	US/F
SSW1	STC Source Waveform – Lower Dipole	WF_SAM1	
SUL1	STC Slowness Upper Limit – Lower Dipole	775	US/F
SWD1	STC Slowness Width – Lower Dipole	40	US/F
TBF1	STC Time for Baseline Fill – Lower Dipole	0	US
TLL1	STC Time Lower Limit – Lower Dipole	600	US
TST1	STC Time Step – Lower Dipole	200	US
TUL1	STC Time Upper Limit – Lower Dipole	15912.5	US
TWD1	STC Time Width – Lower Dipole	2000	US
TWI1	STC Integration Time Window – Lower Dipole	1600	US
TWSX	Transmitter Waveform Select X	0	
WFM1	Waveform Mode 1	W1	
System and Miscellaneous			
BS	Bit Size	9.875	IN
DO	Depth Offset for Playback	-229.0	M
PP	Playback Processing	NORMAL	

Format: DSST_LOWER_DIPOLE_VDL_COLOR Vertical Scale: 1:200 Graphics File Created: 25-Aug-2012 13:35

OP System Version: 19C0-187

DSST-B 19C0-187 EDTC-B SKK-5169-EDTCB

Input DLIS Files

DEFAULT	Flip_DSI_071LUP	PRODUCER	25-Aug-2012 13:33	582.3 M	202.8 M
---------	-----------------	----------	-------------------	---------	---------

Output DLIS Files

DEFAULT	DSI_073PUP	FN:91	PRODUCER	25-Aug-2012 13:35
CLIENT	DSI_073PUC	FN:92	CUSTOMER	25-Aug-2012 13:35

MAXIS Field Log

Calibration and Check Summary

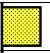
Measurement	Nominal	Master	Before	After	Change	Limit	Units
Enhanced DTS Cartridge Wellsite Calibration – EDTC Accelerometer Calibration							
Before: 21–Aug–2012 17:57							
EDTC Z–Axis Acceleration	9.810	N/A	9.859	N/A	N/A	N/A	M/S2
Enhanced DTS Cartridge Wellsite Calibration – Detector Calibration							
Before: 21–Aug–2012 17:45 After: 21–Aug–2012 20:57							
Gamma Ray (Jig – Bkg)	163.2	N/A	163.2	162.5	–0.6715	14.83	GAPI
Gamma Ray (Calibrated)	165.0	N/A	165.0	164.3	–0.6790	15.00	GAPI

Enhanced DTS Cartridge / Equipment Identification

Primary Equipment:		
EDTC Gamma Ray Detector	EDTG – A/B	77693
Enhanced DTS Cartridge	EDTC – B	8529
Auxiliary Equipment:		
EDTC Housing	EDTH – B	8528

Enhanced DTS Cartridge Wellsite Calibration

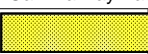
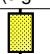
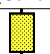

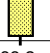
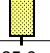
EDTC Accelerometer Calibration

Phase	EDTC Z–Axis Acceleration M/S2	Value
Before		9.859
	9.610 (Minimum) 9.810 (Nominal) 10.01 (Maximum)	

Before: 21–Aug–2012 17:57

Enhanced DTS Cartridge Wellsite Calibration

Detector Calibration

Phase	Gamma Ray Background GAPI	Value	Phase	Gamma Ray (Jig – Bkg) GAPI	Value	Phase	Gamma Ray (Calibrated) GAPI	Value
Before		1.756	Before		163.2	Before		165.0
After		4.001	After		162.5	After		164.3
	0 (Minimum) 30.00 (Nominal) 120.0 (Maximum)			148.3 (Minimum) 163.2 (Nominal) 178.0 (Maximum)			150.0 (Minimum) 165.0 (Nominal) 180.0 (Maximum)	

Before: 21–Aug–2012 17:45

After: 21–Aug–2012 20:57

Company: Lamont Doherty Earth Observatory

Shell

Well: Expedition 344S, U0080A (USC80)

Field: Baffin Bay

Rig: IOIDES Resolution

Schlumberger

Rig: **VOIDS Resolution**

Country: **USA**

DSI

Dipole Sonic Imager

Lower Dipole