

DISCLAIMER

THE USE OF AND RELIANCE UPON THIS RECORDED-DATA BY THE HEREIN NAMED COMPANY (AND ANY OF ITS AFFILIATES, PARTNERS, REPRESENTATIVES, AGENTS, CONSULTANTS AND EMPLOYEES) IS SUBJECT TO THE TERMS AND CONDITIONS AGREED UPON BETWEEN SCHLUMBERGER AND THE COMPANY, INCLUDING: (a) RESTRICTIONS ON USE OF THE RECORDED-DATA; (b) DISCLAIMERS AND WAIVERS OF WARRANTIES AND REPRESENTATIONS REGARDING COMPANY'S USE OF AND RELIANCE UPON THE RECORDED-DATA; AND (c) CUSTOMER'S FULL AND SOLE RESPONSIBILITY FOR ANY INFERENCE DRAWN OR DECISION MADE IN CONNECTION WITH THE USE OF THIS RECORDED-DATA.

OTHER SERVICES1

- OS1: HNGS
- OS2: HRLA
- OS3: HLDS
- OS4: MSS
- OS5: FMS

REMARKS: RUN NUMBER 1

Hole drilled and cored using APC/XCB coring system.

Modified MCD devices run above and below DSI for centralization.

FMS Caliper closed during downlog; Opened at TD (fully open by 245mbsf); Closed at 110mbsf on up logs.

DSI P&S Mode run in Standard frequency, Odd array for all passes.

DSI Lower Dipole run in Standard frequency, Even array for downlog and main pass

DSI Lower Dipole run in Low Frequency Dipole mode, Even array for first up pass


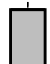
DSI Upper Dipole run in Standard frequency, Odd array for all passes

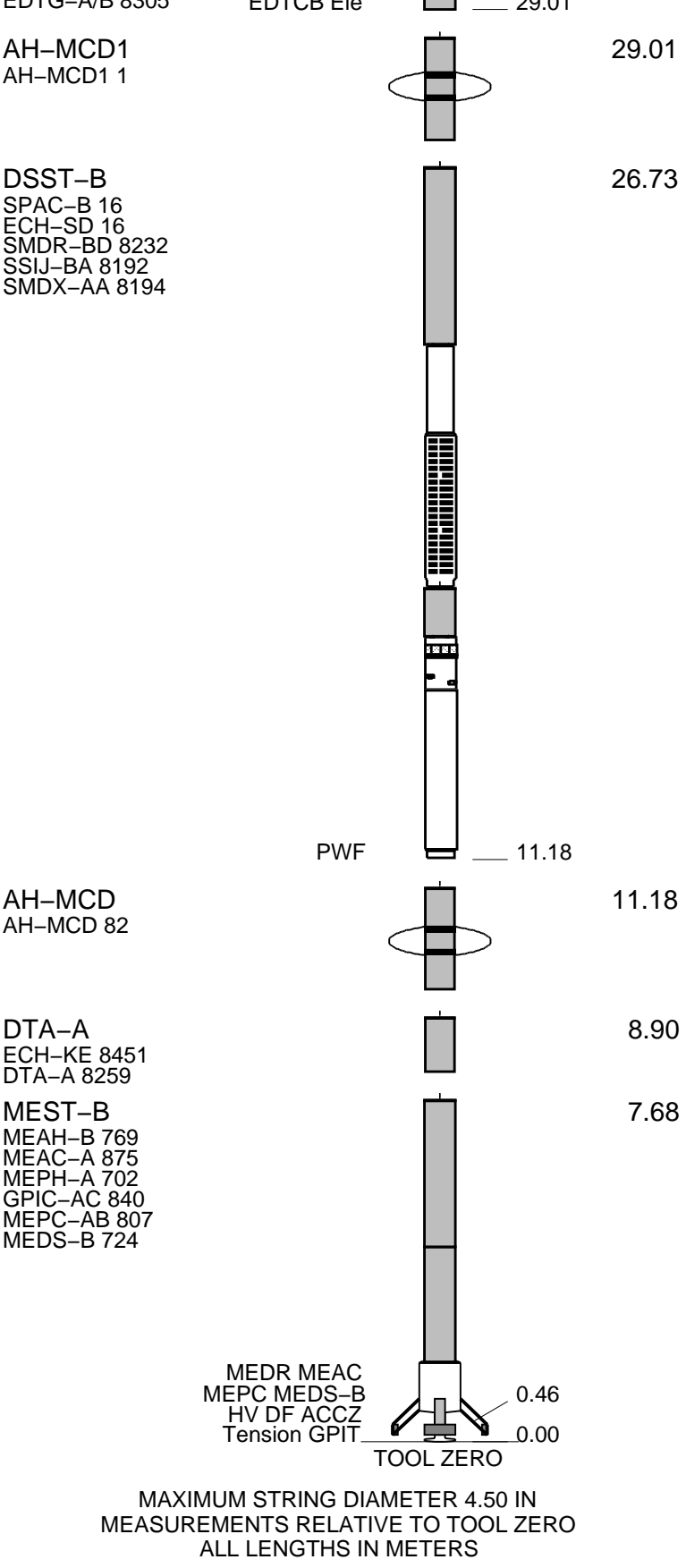
DSI Stoneley Mode run in Standard frequency, Even array for all passes

RUN 1			RUN 2		
SERVICE ORDER #:			SERVICE ORDER #:		
PROGRAM VERSION: 19C0-187			PROGRAM VERSION:		
FLUID LEVEL:			FLUID LEVEL:		
LOGGED INTERVAL	START	STOP	LOGGED INTERVAL	START	STOP

EQUIPMENT DESCRIPTION

RUN 1	RUN 2
SURFACE EQUIPMENT	
WITM (EDTS)-A 1	

DOWNHOLE EQUIPMENT			
LEH-MT 101	MDSB_EDTC		31.95
LEH-MT 101 101	Mud Tempe		30.99
	CTEM		29.92
EDTC-B	Gamma Ray		30.99
EDTH-B 8303	EFTB DIAG		29.35
EDTC-B 8317	TelStatus		
EDTC A/B 8305	EDTCB_Ele		30.04



Production String	(in)	(m)	Well Schematic	(m)	(in)	Casing String
	OP	ID		MD	MD	

Kelly Bushing Elevation

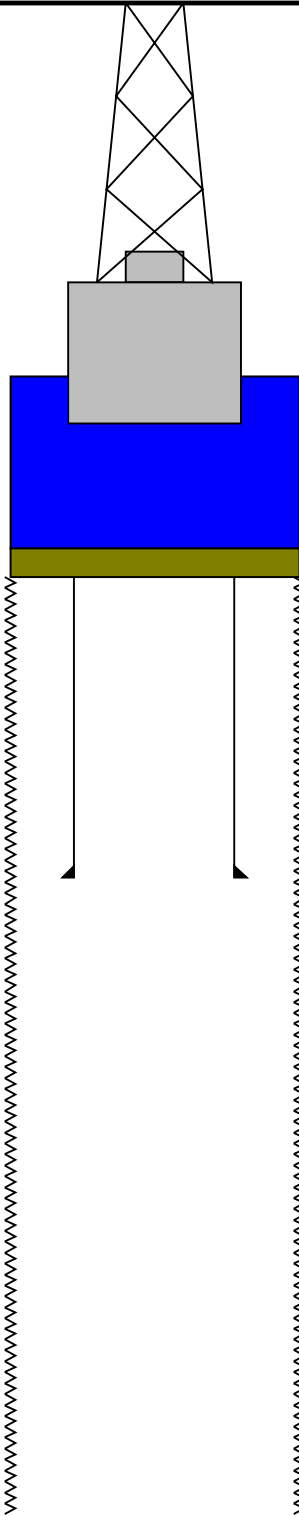
Derrick Floor Elevation

Mean Sea Level

-1796.8

-1796.8

-1785.8



0.0

9.875

4.000

Sea Floor

80.0

5.500

4.000

Bit

249.1

9.875

TD - Driller

Schlumberger

**Downlog
1:200 Scale**

MAXIS Field Log

Company: Lamont Doherty Earth Observatory

Well: Expedition 346, Site U1430B

Input DLIS Files

DEFAULT	FMS_DSI_057PUP	FN:73	PRODUCER	24-Aug-2013 13:46	249.9 M	-11.3 M
---------	----------------	-------	----------	-------------------	---------	---------

Output DLIS Files

DEFAULT	FMS_DSI_NGS_064PUP	FN:2	PRODUCER	20-Sep-2013 13:25	249.9 M	-11.3 M
CLIENT	FMS_DSI_NGS_064PUC	FN:3	CUSTOMER	20-Sep-2013 13:25	249.9 M	-11.3 M

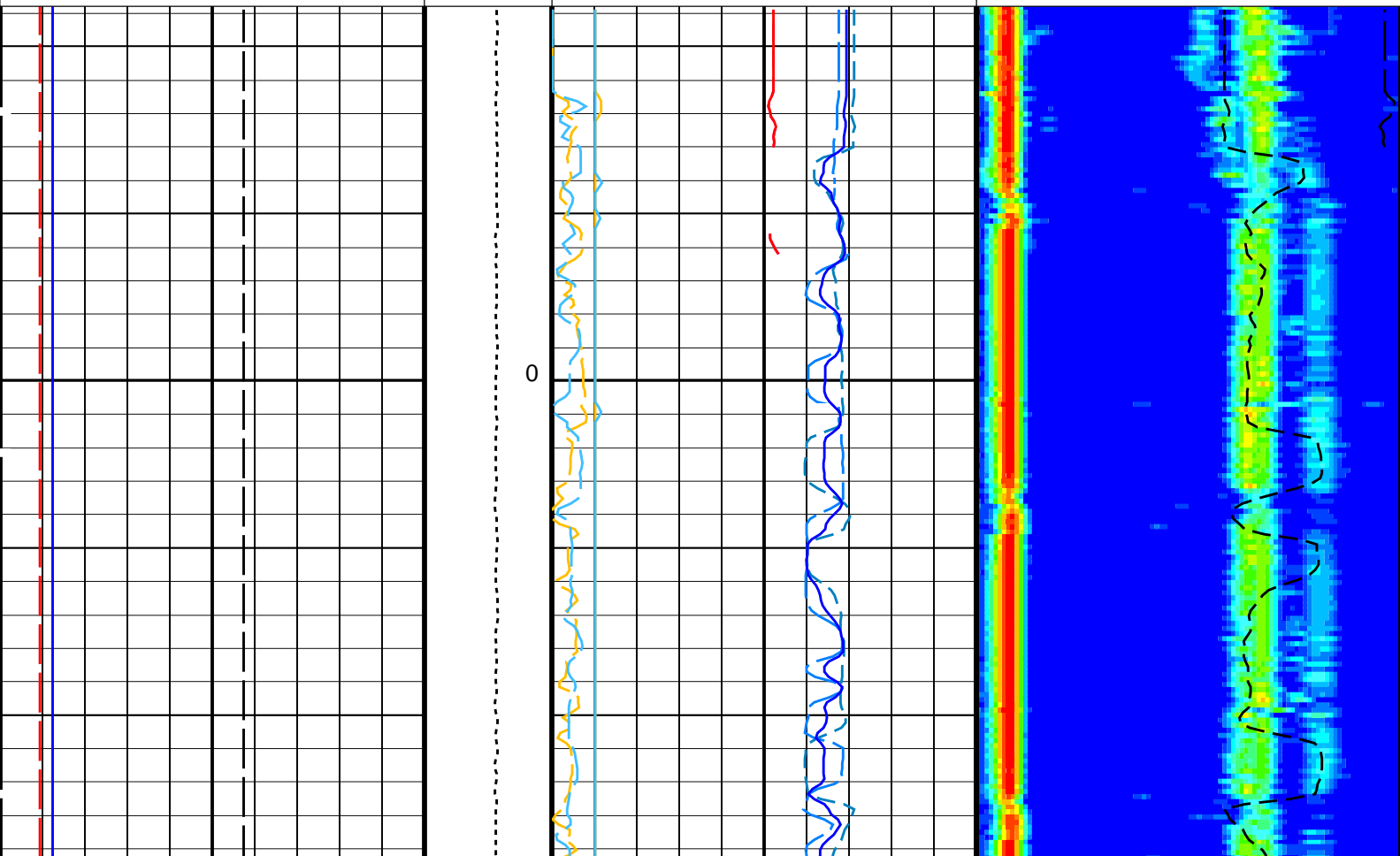
OP System Version: 19C0-187

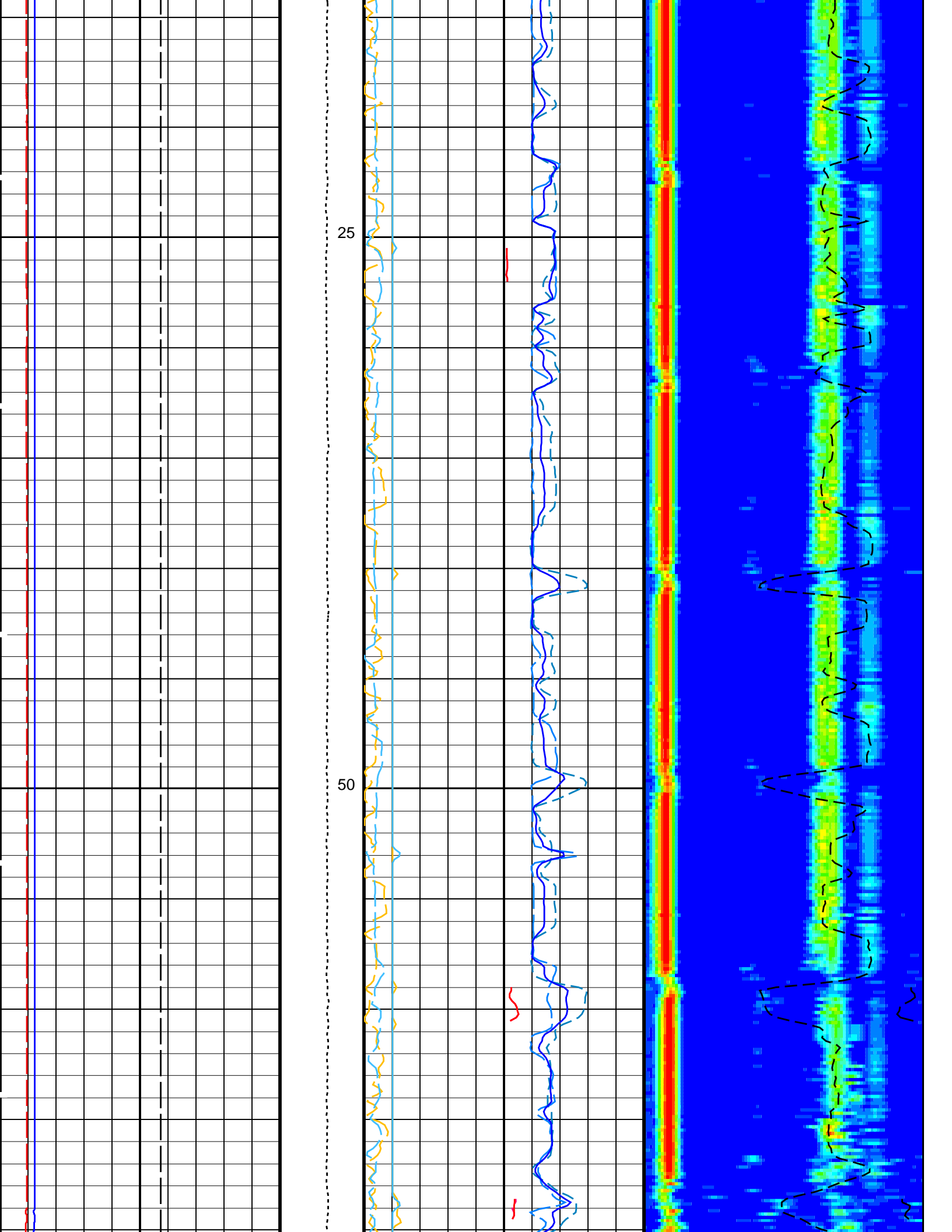
MEST-B	19C0-187	DTA-A	19C0-187
DSST-B	19C0-187	HNGC-B	19C0-187
HNGS-BA	19C0-187	EDTC-B	SKK-5169-EDTCB

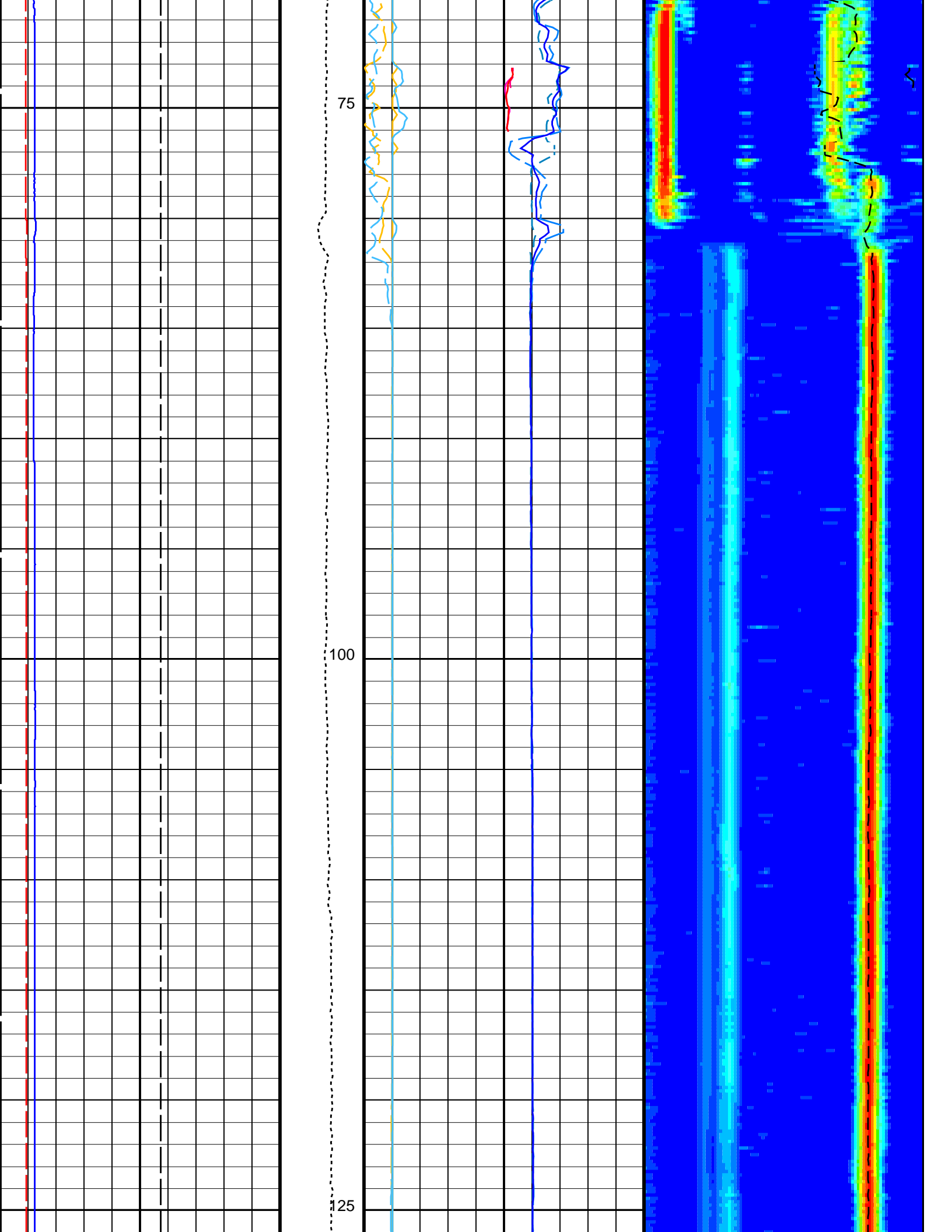
PIP SUMMARY

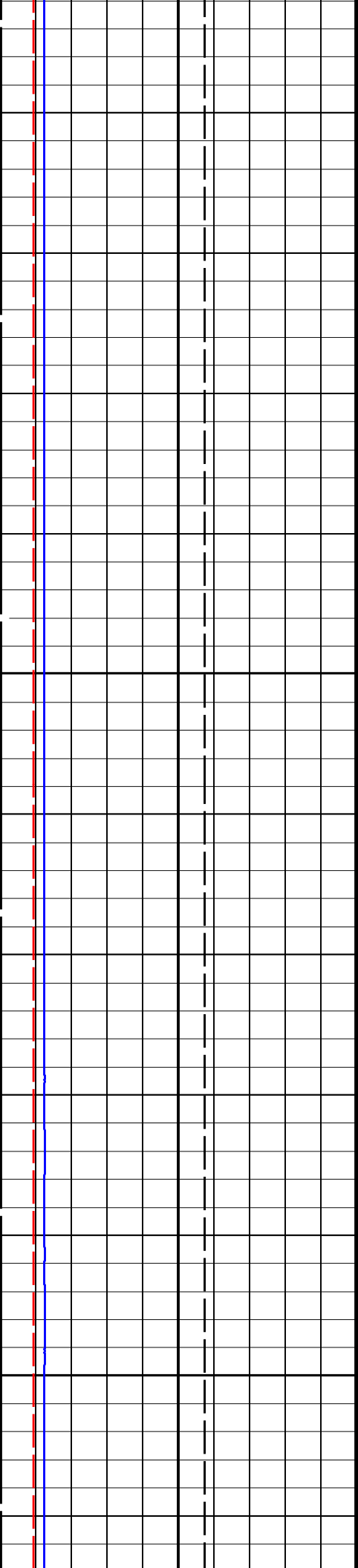
Time Mark Every 60 S

		<p>Peak Coherence / TA - P & S Shear (CHTS)</p> <p>-1 (----) 9</p> <p>Delta-T Shear - P & S (DT4S)</p> <p>440 (US/F) 40</p> <p>Delta-T Shear / TA - P & S (DTTS)</p> <p>440 (US/F) 40</p> <p>Delta-T Shear / RA - P & S (DTRS)</p> <p>440 (US/F) 40</p> <p>Delta-T Comp - P & S (DT4P)</p> <p>440 (US/F) 40</p> <p>Delta-T Comp / TA - P & S (DTTP)</p> <p>440 (US/F) 40</p> <p>Delta-T Comp / RA - P & S (DTRP)</p> <p>440 (US/F) 40</p>	
<p>Caliper 2 (C2)</p> <p>0 (IN) 20</p>		<p>Peak Coherence / RA - P & S Shear (CHRS)</p> <p>-1 (----) 9</p>	<p>Min Amplitude Max</p> <p>Rec.Array P&S Slow Proj. CVDL (SPR4)</p> <p>40 (US/F) 240</p>
<p>Caliper 1 (C1)</p> <p>0 (IN) 20</p>		<p>Peak Coherence / TA - P & S Comp (CHTP)</p> <p>0 (----) 10</p>	<p>Delta-T Shear / RA - P & S (DTRS)</p> <p>40 (US/F) 240</p>
<p>Bit Size (BS)</p> <p>0 (IN) 20</p>	<p>Tension (TENS) (LBF)</p> <p>0 5000</p>	<p>Peak Coherence / RA - P & S Comp (CHRP)</p> <p>0 (----) 10</p>	<p>Delta-T Comp / RA - P & S (DTRP)</p> <p>40 (US/F) 240</p>



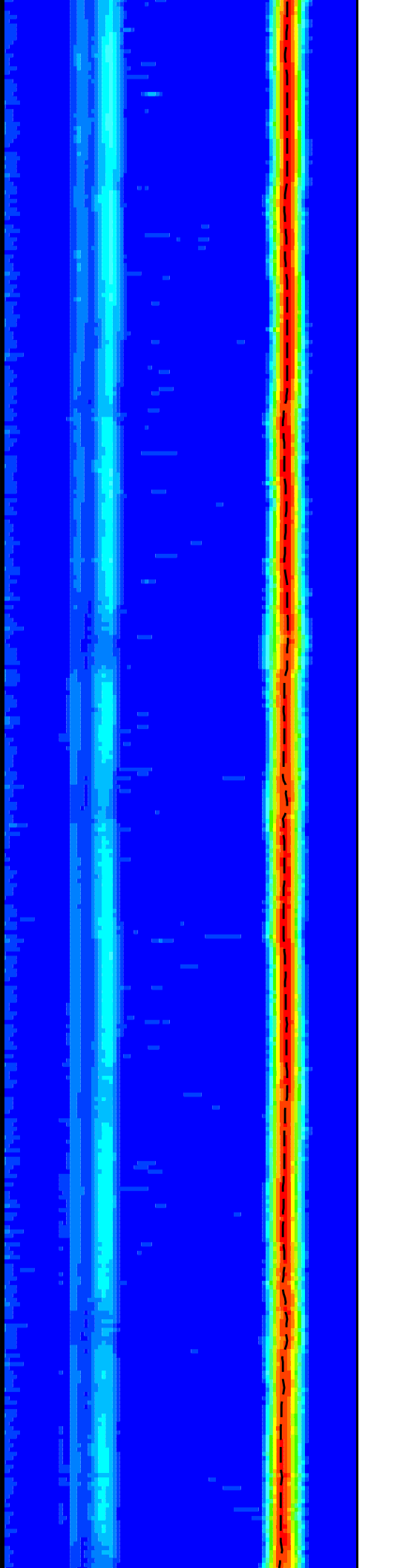
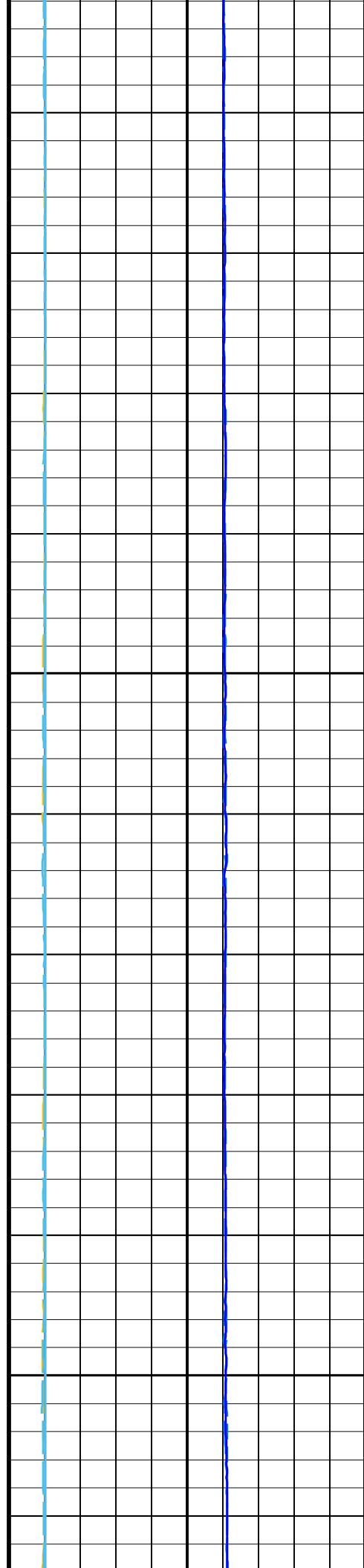


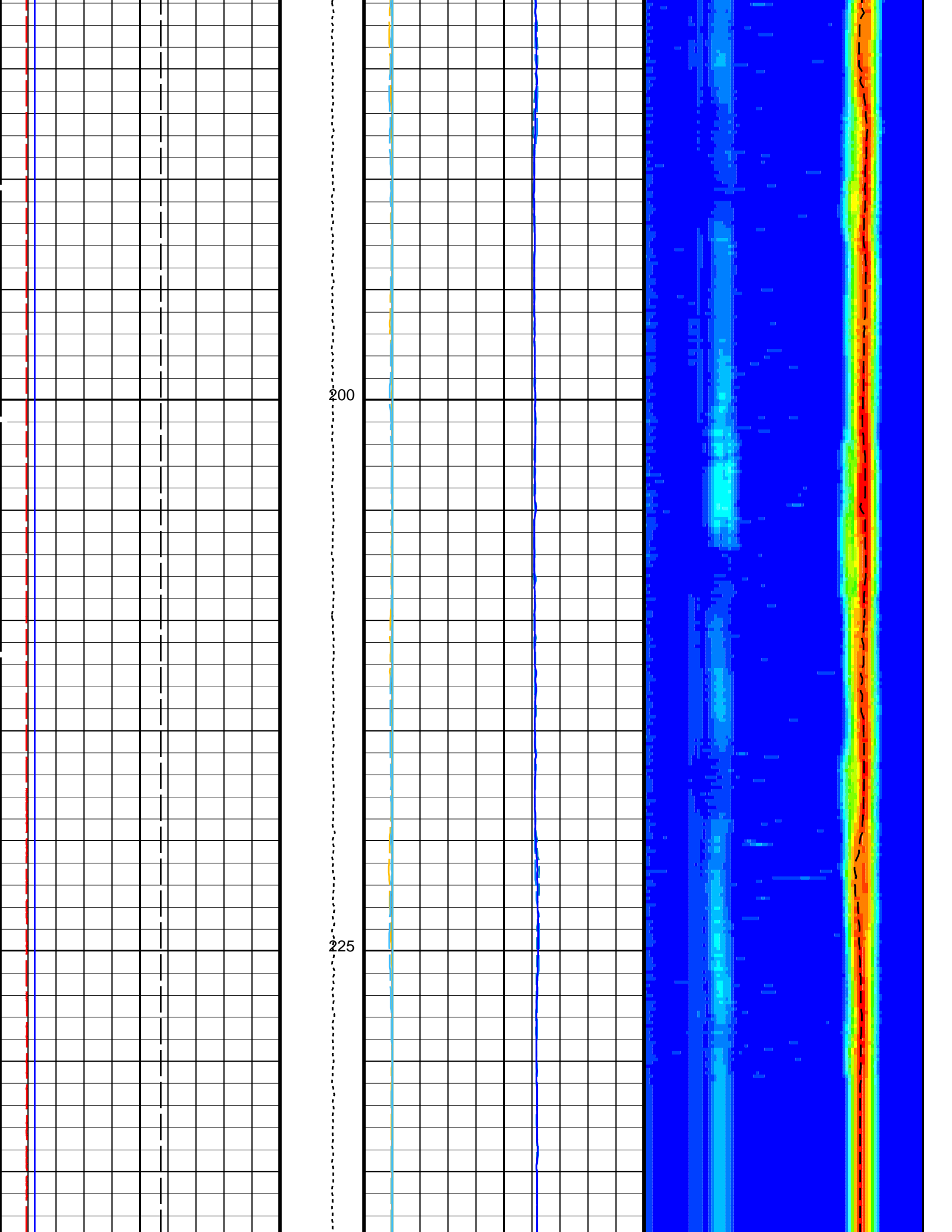




150

175





MTXG	Monopole Transmitter Geometry	186	IN
NWI4	Number Waveform Items 4	8	
NWIX	Number Waveform Items X	0	
RSMN	Label Shear/Compressional Minimum Ratio – Monopole P&S	1.4	
RSMX	Label Shear/Compressional Maximum Ratio – Monopole P&S	2.12	
RX1G	Receiver 1 Geometry	294	IN
RX2G	Receiver 2 Geometry	300	IN
RX3G	Receiver 3 Geometry	306	IN
RX4G	Receiver 4 Geometry	312	IN
RX5G	Receiver 5 Geometry	318	IN
RX6G	Receiver 6 Geometry	324	IN
RX7G	Receiver 7 Geometry	330	IN
RX8G	Receiver 8 Geometry	336	IN
SAM4	DSST Sonic Acquisition Mode 4 – Monopole Mode for P&S	ODD	
SAMX	DSST Sonic Acquisition Mode X – Both Dipoles or Monopole Mode for Expert	OFF	
SAS4	STC Sonic Array Status – Monopole P&S	255	
SBO4	STC Search Band Offset – Monopole P&S	500	US
SBR4	STC Baseline Removal – Monopole P&S	ON	
SBW4	STC Search Bandwidth – Monopole P&S	2000	US
SFC4	STC Formation Character – Monopole P&S	SELECTABLE	
SFM4	STC Filter – Monopole P&S	B3–20K	
SHLL	Label Slowness Lower Limit – Monopole P&S Shear	210	US/F
SHUL	Label Slowness Upper Limit – Monopole P&S Shear	240	US/F
SLL4	STC Slowness Lower Limit – Monopole P&S	40	US/F
SST4	STC Slowness Step – Monopole P&S	2	US/F
SSW4	STC Source Waveform – Monopole P&S	WF_SAM4	
STLL	Label Slowness Lower Limit – Monopole Stoneley	180	US/F
STUL	Label Slowness Upper Limit – Monopole Stoneley	780	US/F
SUL4	STC Slowness Upper Limit – Monopole P&S	440	US/F
SWD4	STC Slowness Width – Monopole P&S	10	US/F
TBF4	STC Time for Baseline Fill – Monopole P&S	300	US
TLL4	STC Time Lower Limit – Monopole P&S	150	US
TST4	STC Time Step – Monopole P&S	50	US
TUL4	STC Time Upper Limit – Monopole P&S	5110	US
TWD4	STC Time Width – Monopole P&S	1000	US
TWI4	STC Integration Time Window – Monopole P&S	500	US
TWSX	Transmitter Waveform Select X	0	
HNGS–BA: Hostile Natural Gamma Ray Sonde			
BHS	Borehole Status	OPEN	
EDTC–B: Enhanced DTS Cartridge			
BHS	Borehole Status	OPEN	
System and Miscellaneous			
BS	Bit Size	11.438	IN
DO	Depth Offset for Playback	0.0	M
PP	Playback Processing	RECOMPUTE	

Format: DSST_P_S_VDL_COLOR Vertical Scale: 1:200 Graphics File Created: 20–Sep–2013 13:25

OP System Version: 19C0–187

MEST–B	19C0–187	DTA–A	19C0–187
DSST–B	19C0–187	HNGC–B	19C0–187
HNGS–BA	19C0–187	EDTC–B	SKK–5169–EDTCB

Input DLIS Files

DEFAULT	FMS_DSI_057PUP	FN:73	PRODUCER	24–Aug–2013 13:46	249.9 M	–11.3 M
---------	----------------	-------	----------	-------------------	---------	---------

Output DLIS Files

DEFAULT	FMS_DSI_NGS_064PUP	FN:2	PRODUCER	20–Sep–2013 13:25
CLIENT	FMS_DSI_NGS_064PUC	FN:3	CUSTOMER	20–Sep–2013 13:25



First Pass
1:200 Scale

Input DLIS Files

DEFAULT FMS_DSI_056PUP FN:71 PRODUCER 24-Aug-2013 13:41 250.5 M 89.2 M

Output DLIS Files

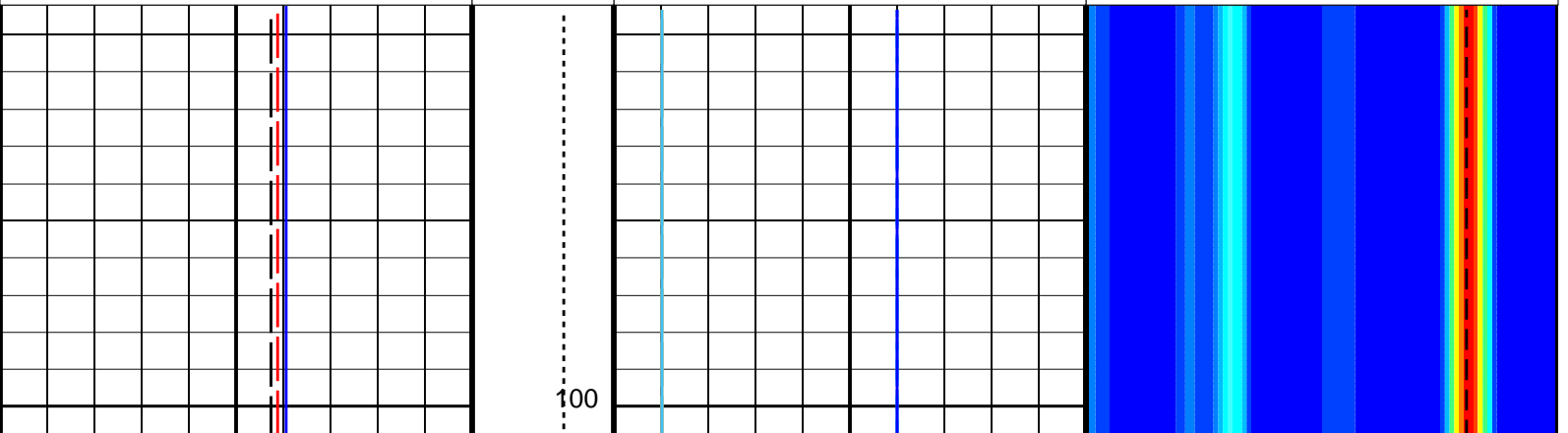
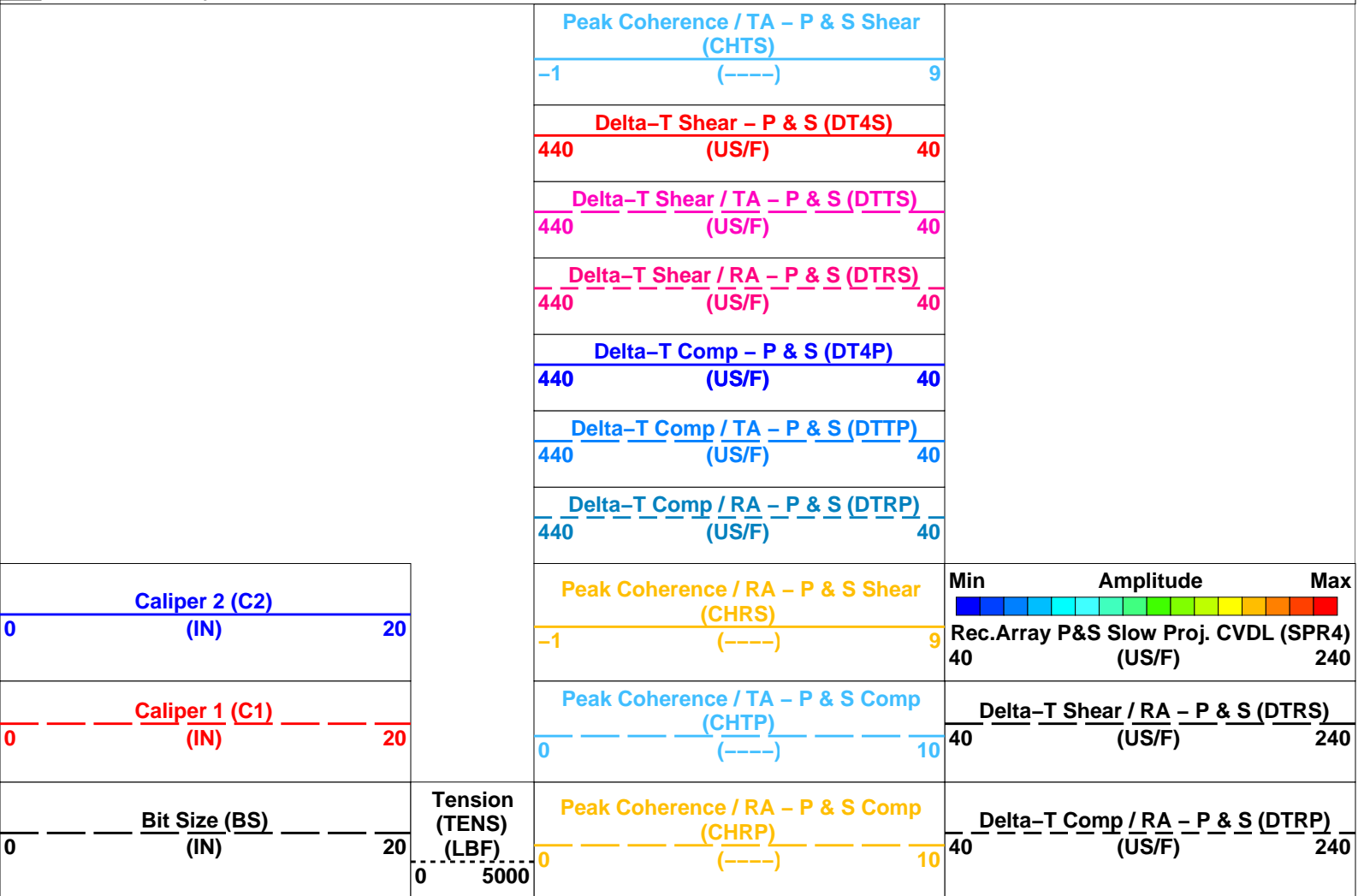
DEFAULT FMS_DSI_NGS_065PUP FN:4 PRODUCER 20-Sep-2013 13:29 250.5 M 89.2 M
 CLIENT FMS_DSI_NGS_065PUC FN:5 CUSTOMER 20-Sep-2013 13:29 250.5 M 89.2 M

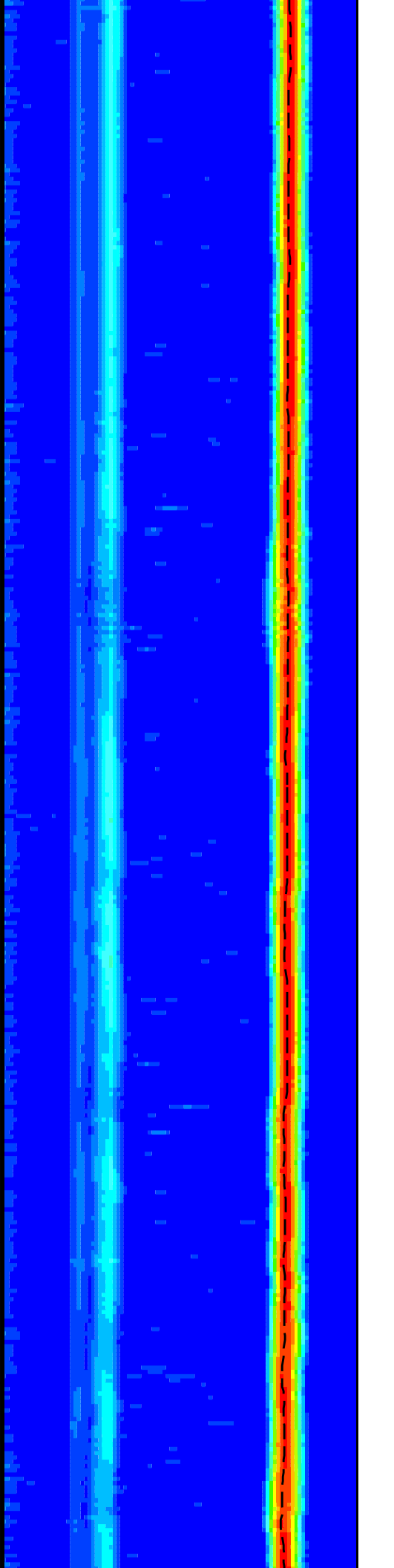
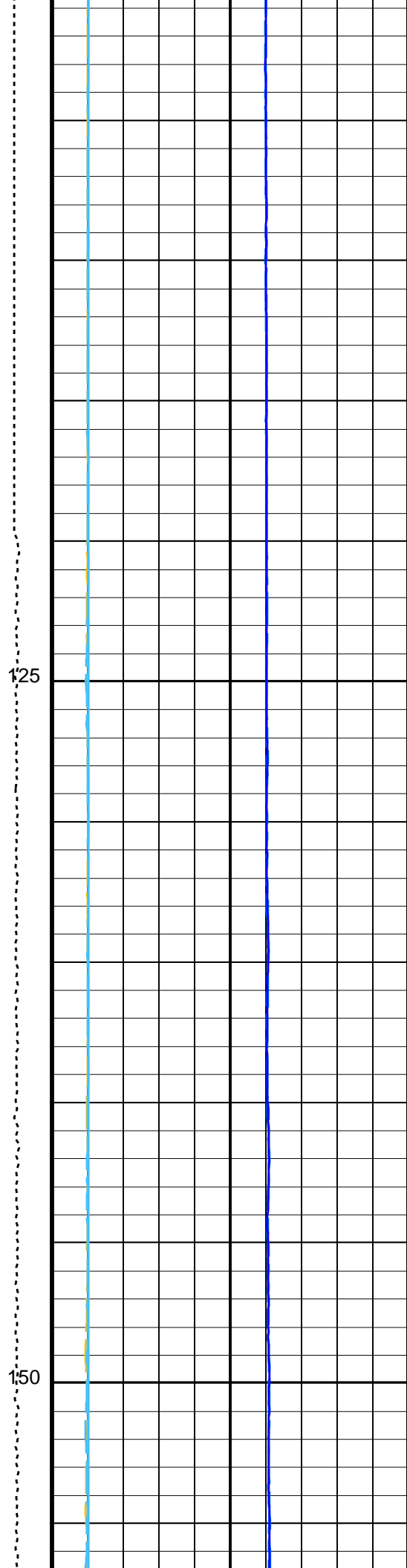
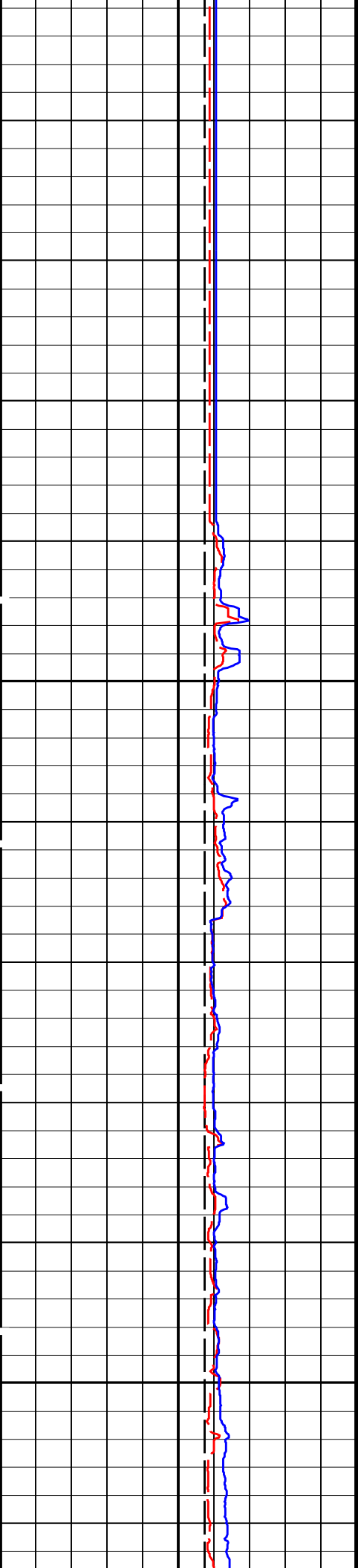
OP System Version: 19C0-187

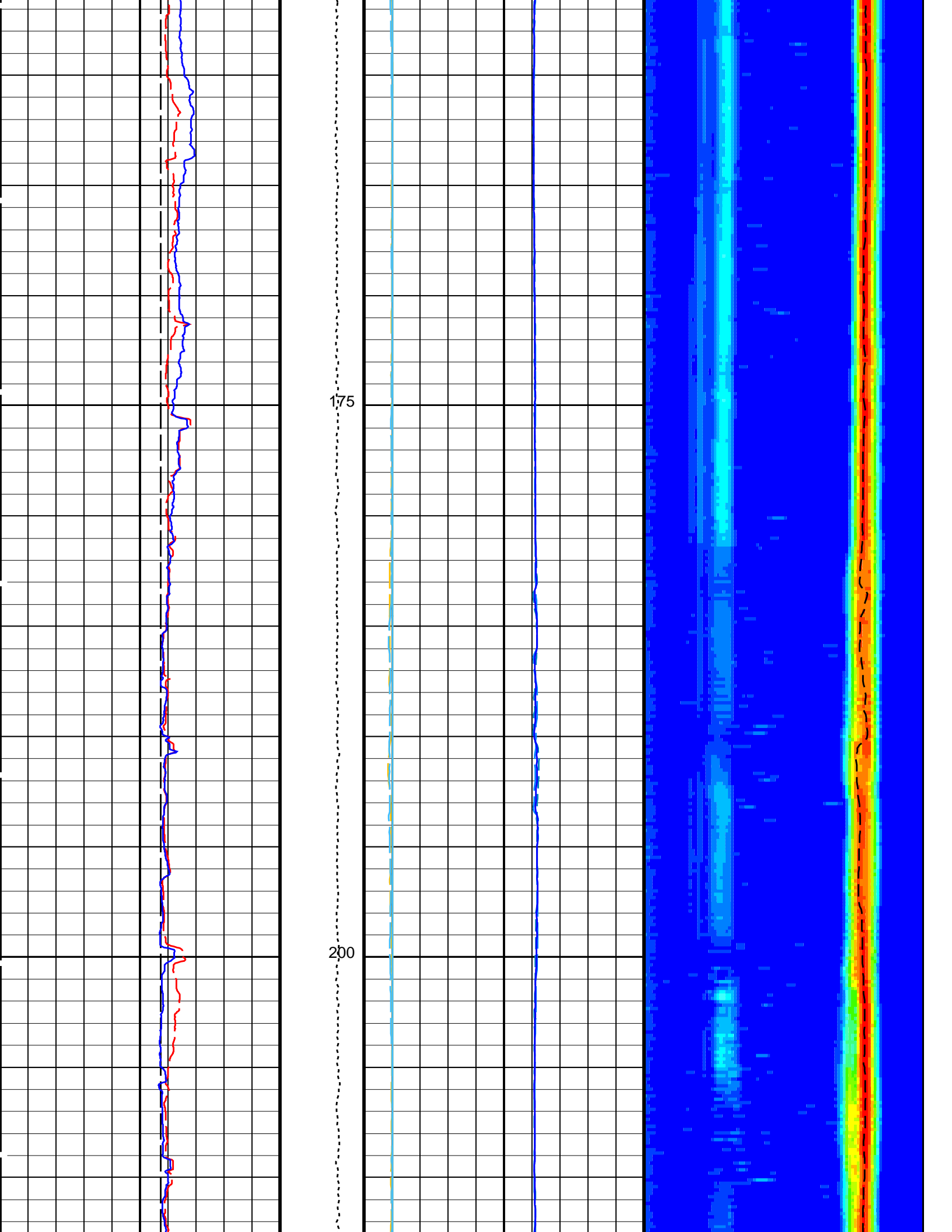
MEST-B 19C0-187 DTA-A 19C0-187
 DSST-B 19C0-187 HNGC-B 19C0-187
 HNGS-BA 19C0-187 EDTC-B SKK-5169-EDTCB

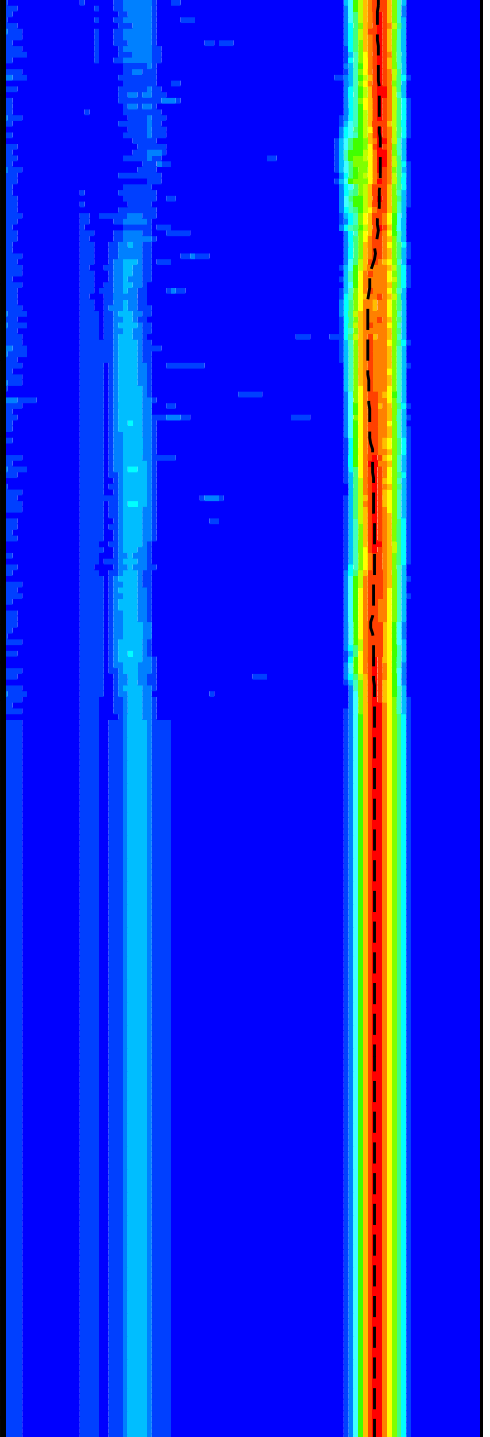
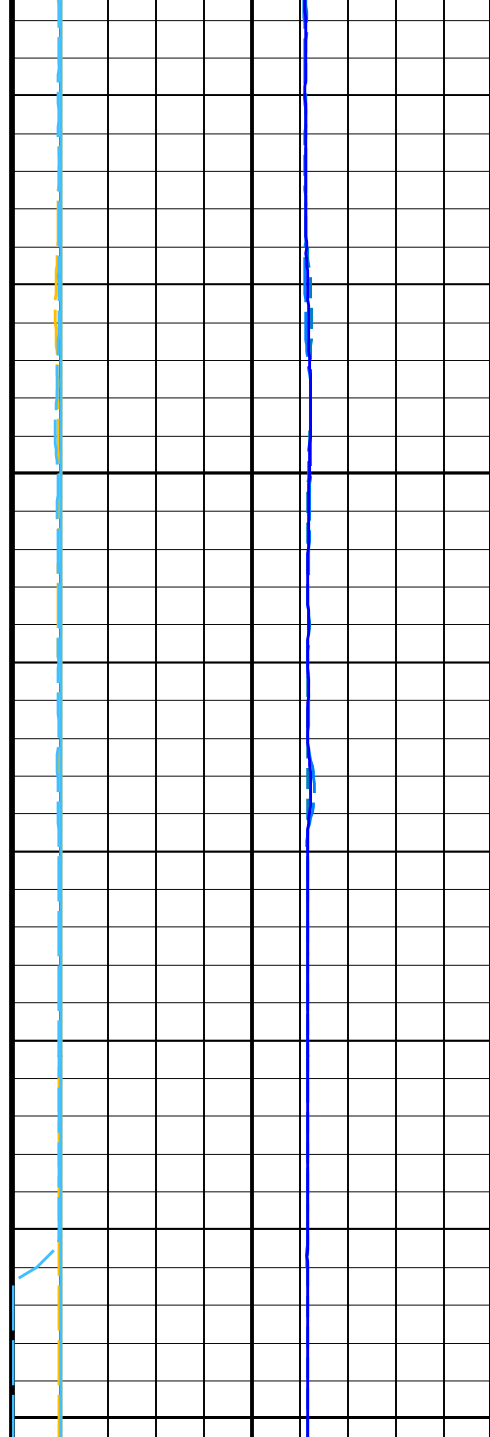
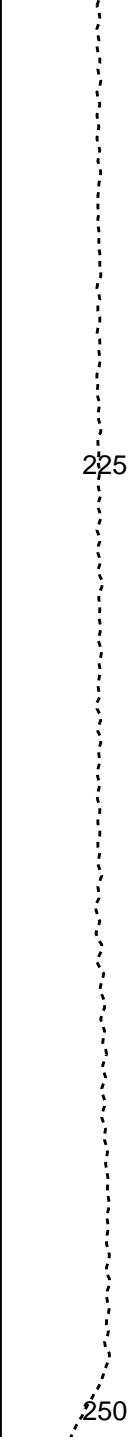
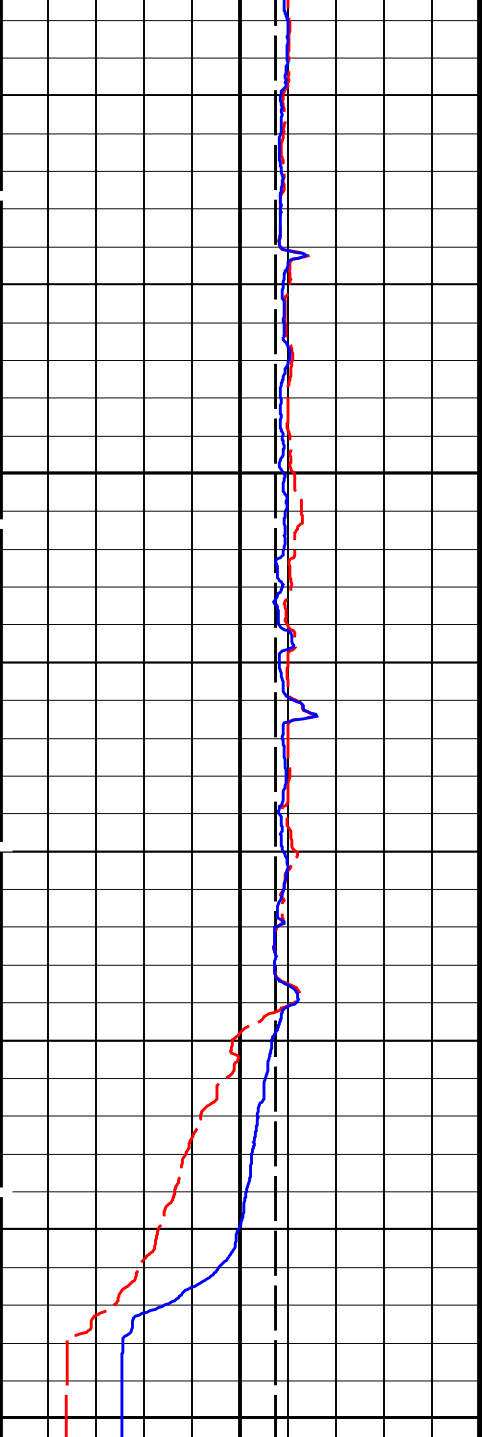
PIP SUMMARY

Time Mark Every 60 S









Bit Size (BS)
(IN) 0 20

Tension (TENS)
(LBF) 0 5000

Peak Coherence / RA - P & S Comp
(CHRP) 0 10

Delta-T Comp / RA - P & S (DTRP)
(US/F) 40 240

Caliper 1 (C1)
(IN) 0 20

Peak Coherence / TA - P & S Comp
(CHTP) 0 10

Delta-T Shear / RA - P & S (DTRS)
(US/F) 40 240

Caliper 2 (C2)
(IN) 0 20

Peak Coherence / RA - P & S Shear
(CHRS) -1 9

Min Amplitude Max
Rec.Array P&S Slow Proj. CVDL (SPR4)
(US/F) 40 240

Delta-T Comp / RA - P & S (DTRP)
(US/F) 440 40

Delta-T Comp / TA - P & S (DTTP)
(US/F) 440 40

Delta-T Comp - P & S (DT4P)
(US/F) 440 40

440	Delta-T Shear / RA - P & S (DTRS) (US/F)	40
440	Delta-T Shear / TA - P & S (DTTS) (US/F)	40
440	Delta-T Shear - P & S (DT4S) (US/F)	40
-1	Peak Coherence / TA - P & S Shear (CHTS) (-----)	9

PIP SUMMARY

Time Mark Every 60 S

Parameters

DLIS Name	Description	Value
DSST-B: Dipole Shear Imager - B		
BHS	Borehole Status	OPEN
CASF	Label Casing Function - Monopole P&S	50
COLL	Label Slowness Lower Limit - Monopole P&S Compressional	120 US/F
COUL	Label Slowness Upper Limit - Monopole P&S Compressional	240 US/F
DDE4	Digitizing Delay 4	0 US
DDEX	Digitizing Delay X	0 US
DSI4	Digitizer Sample Interval 4	10 US
DSIX	Digitizer Sample Interval X	40 US
DTF	Delta-T Fluid	189 US/F
DWC4	Digitizer Word Count 4	512
DWCX	Digitizer Word Count X	512
FILG	Label Fill Gap Control - Monopole P&S	COMP_SHEAR
LFC	Label Formation Character - Monopole P&S	DYNAMIC
MCS	Mean Casing Slowness	57 US/F
MTXG	Monopole Transmitter Geometry	186 IN
NWI4	Number Waveform Items 4	8
NWIX	Number Waveform Items X	0
RSMN	Label Shear/Compressional Minimum Ratio - Monopole P&S	1.4
RSMX	Label Shear/Compressional Maximum Ratio - Monopole P&S	2.12
RX1G	Receiver 1 Geometry	294 IN
RX2G	Receiver 2 Geometry	300 IN
RX3G	Receiver 3 Geometry	306 IN
RX4G	Receiver 4 Geometry	312 IN
RX5G	Receiver 5 Geometry	318 IN
RX6G	Receiver 6 Geometry	324 IN
RX7G	Receiver 7 Geometry	330 IN
RX8G	Receiver 8 Geometry	336 IN
SAM4	DSST Sonic Acquisition Mode 4 - Monopole Mode for P&S	ODD
SAMX	DSST Sonic Acquisition Mode X - Both Dipoles or Monopole Mode for Expert	OFF
SAS4	STC Sonic Array Status - Monopole P&S	255
SBO4	STC Search Band Offset - Monopole P&S	500 US
SBR4	STC Baseline Removal - Monopole P&S	ON
SBW4	STC Search Bandwidth - Monopole P&S	2000 US
SFC4	STC Formation Character - Monopole P&S	SELECTABLE
SFM4	STC Filter - Monopole P&S	B3-20K
SHLL	Label Slowness Lower Limit - Monopole P&S Shear	210 US/F
SHUL	Label Slowness Upper Limit - Monopole P&S Shear	240 US/F
SLL4	STC Slowness Lower Limit - Monopole P&S	40 US/F
SST4	STC Slowness Step - Monopole P&S	2 US/F
SSW4	STC Source Waveform - Monopole P&S	WF_SAM4
STLL	Label Slowness Lower Limit - Monopole Stoneley	180 US/F
STUL	Label Slowness Upper Limit - Monopole Stoneley	780 US/F
SUL4	STC Slowness Upper Limit - Monopole P&S	440 US/F
SWD4	STC Slowness Width - Monopole P&S	10 US/F
TBF4	STC Time for Baseline Fill - Monopole P&S	300 US
TLL4	STC Time Lower Limit - Monopole P&S	150 US
TST4	STC Time Step - Monopole P&S	50 US
TUL4	STC Time Upper Limit - Monopole P&S	5110 US
TWD4	STC Time Width - Monopole P&S	1000 US
TWI4	STC Integration Time Window - Monopole P&S	500 US
TWSX	Transmitter Waveform Select X	0
HNCS-BA: Hostile Natural Gamma Ray Sonde		
BHS	Borehole Status	OPEN
EDTC-B: Enhanced DTS Cartridge		
BHS	Borehole Status	OPEN
System and Miscellaneous		
BS	Bit Size	11.438 IN
DO	Depth Offset for Playback	0.0 M
PP	Playback Processing	RECOMPUTE

OP System Version: 19C0-187

MEST-B	19C0-187	DTA-A	19C0-187
DSST-B	19C0-187	HNGC-B	19C0-187
HNGS-BA	19C0-187	EDTC-B	SKK-5169-EDTCB

Input DLIS Files

DEFAULT	FMS_DSI_056PUP	FN:71	PRODUCER	24-Aug-2013 13:41	250.5 M	89.2 M
---------	----------------	-------	----------	-------------------	---------	--------

Output DLIS Files

DEFAULT	FMS_DSI_NGS_065PUP	FN:4	PRODUCER	20-Sep-2013 13:29		
CLIENT	FMS_DSI_NGS_065PUC	FN:5	CUSTOMER	20-Sep-2013 13:29		



Main Pass 1:200 Scale

MAXIS Field Log

Company: Lamont Doherty Earth Observatory

Well: Expedition 346, Site U1430B

Input DLIS Files

DEFAULT	FMS_DSI_055PUP	FN:69	PRODUCER	24-Aug-2013 13:33	249.3 M	-11.1 M
---------	----------------	-------	----------	-------------------	---------	---------

Output DLIS Files

DEFAULT	FMS_DSI_NGS_066PUP	FN:6	PRODUCER	20-Sep-2013 13:30	249.3 M	-11.1 M
CLIENT	FMS_DSI_NGS_066PUC	FN:7	CUSTOMER	20-Sep-2013 13:30	249.3 M	-11.1 M

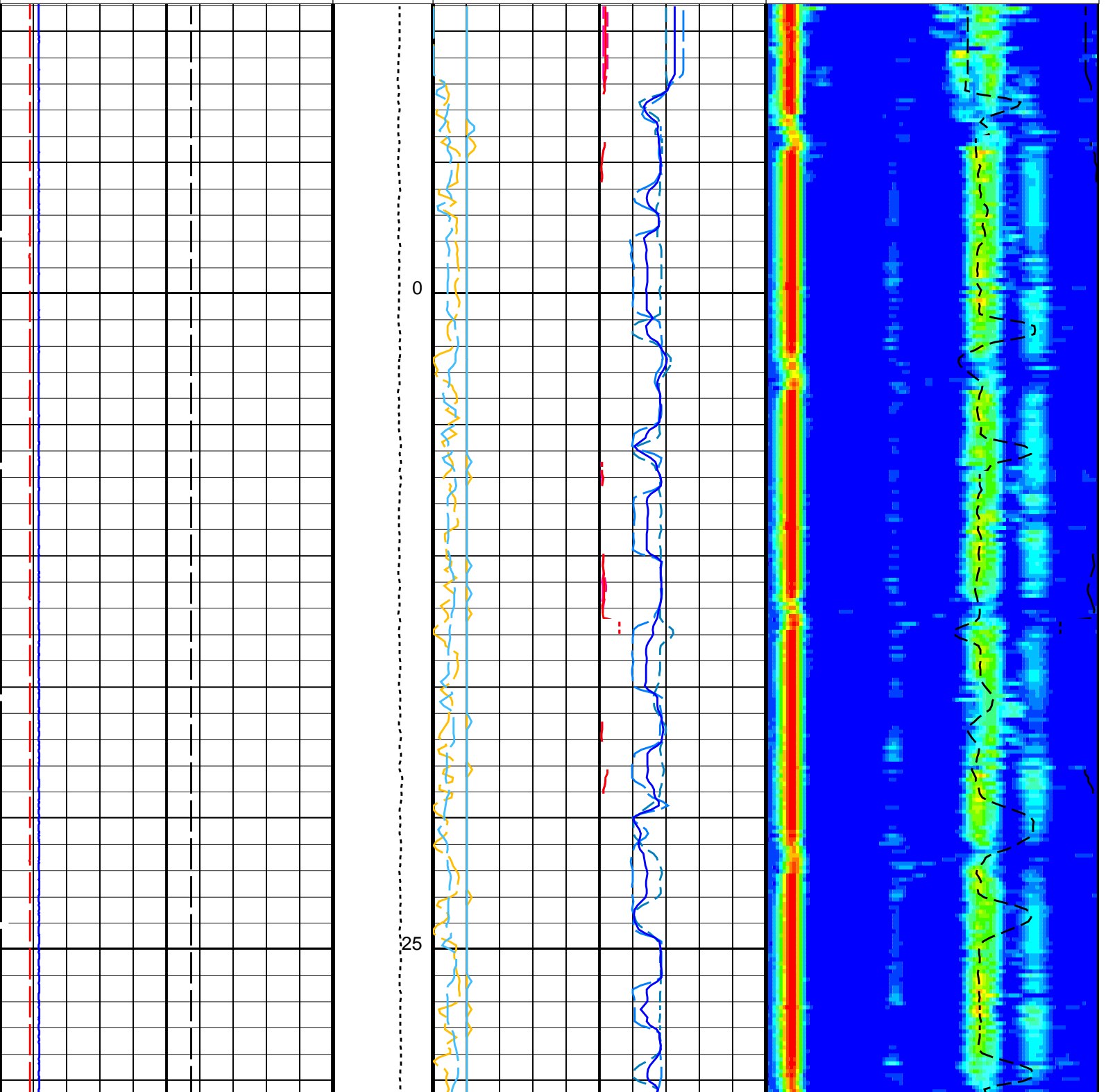
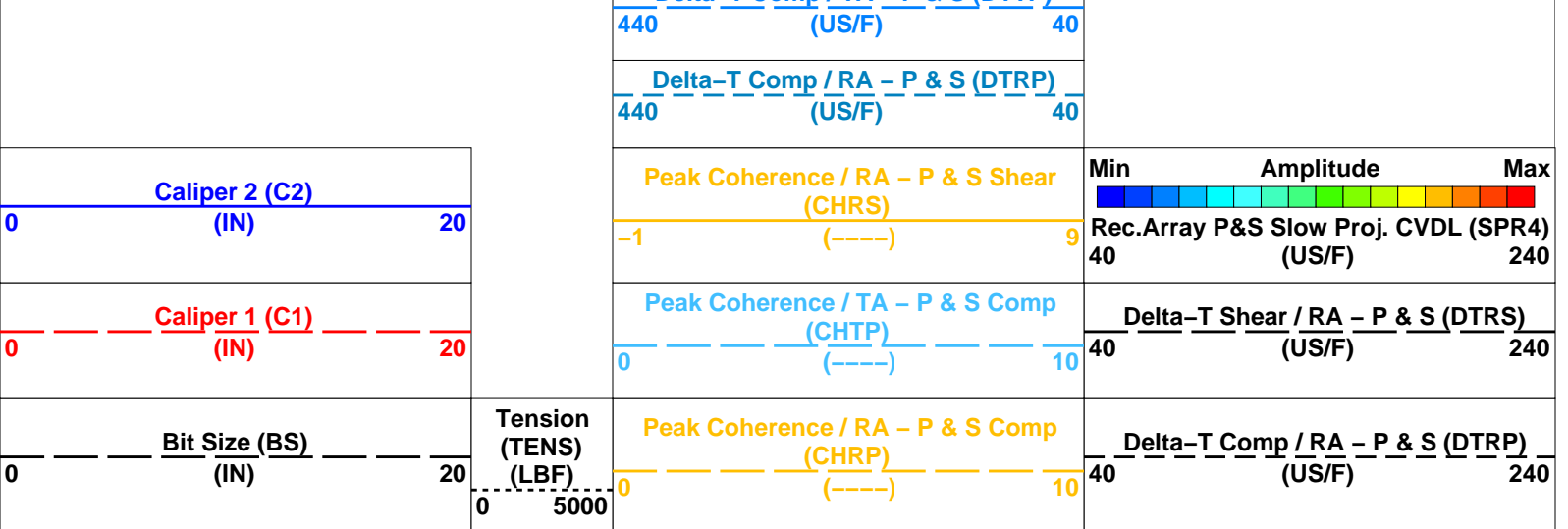
OP System Version: 19C0-187

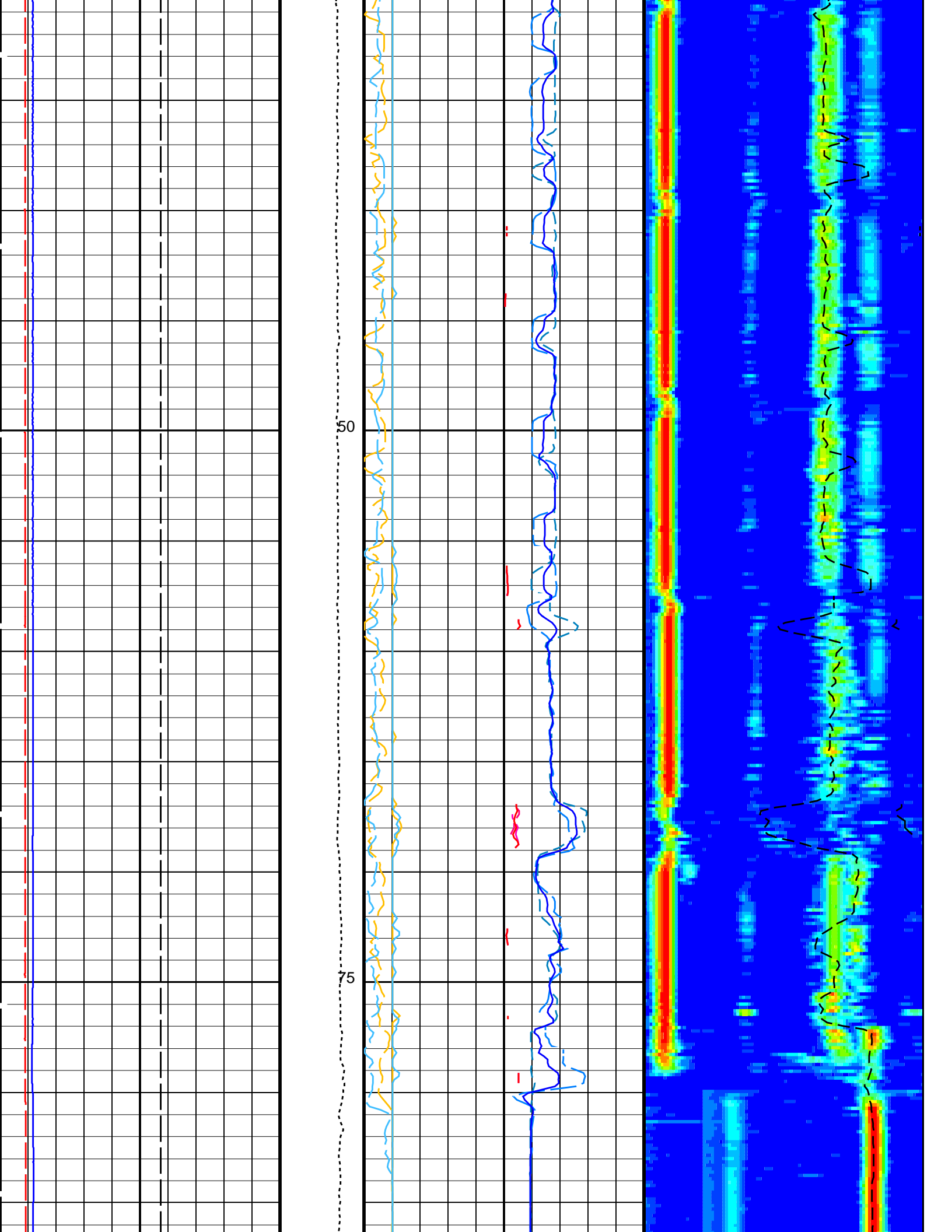
MEST-B	19C0-187	DTA-A	19C0-187
DSST-B	19C0-187	HNGC-B	19C0-187
HNGS-BA	19C0-187	EDTC-B	SKK-5169-EDTCB

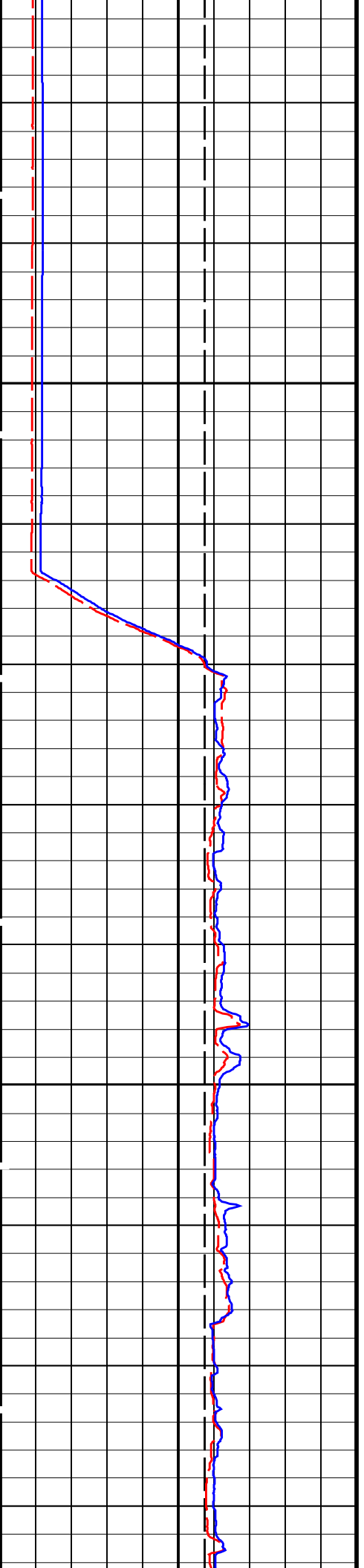
PIP SUMMARY

Time Mark Every 60 S

Peak Coherence / TA - P & S Shear (CHTS)		
-1	(----)	9
Delta-T Shear - P & S (DT4S)		
440	(US/F)	40
Delta-T Shear / TA - P & S (DTTS)		
440	(US/F)	40
Delta-T Shear / RA - P & S (DTRS)		
440	(US/F)	40
Delta-T Comp - P & S (DT4P)		
440	(US/F)	40
Delta-T Comp / TA - P & S (DTTP)		

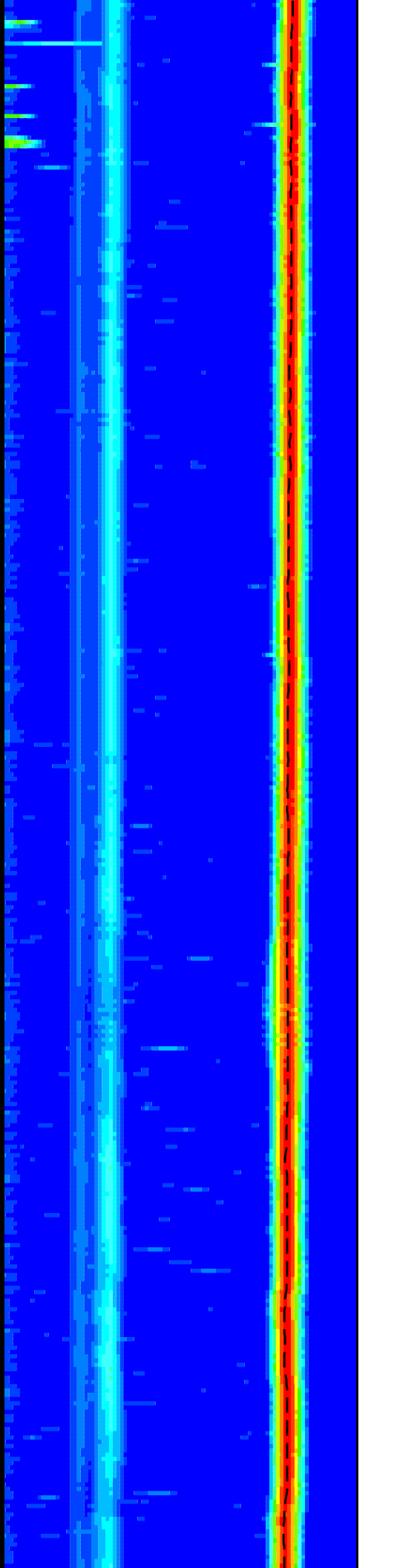
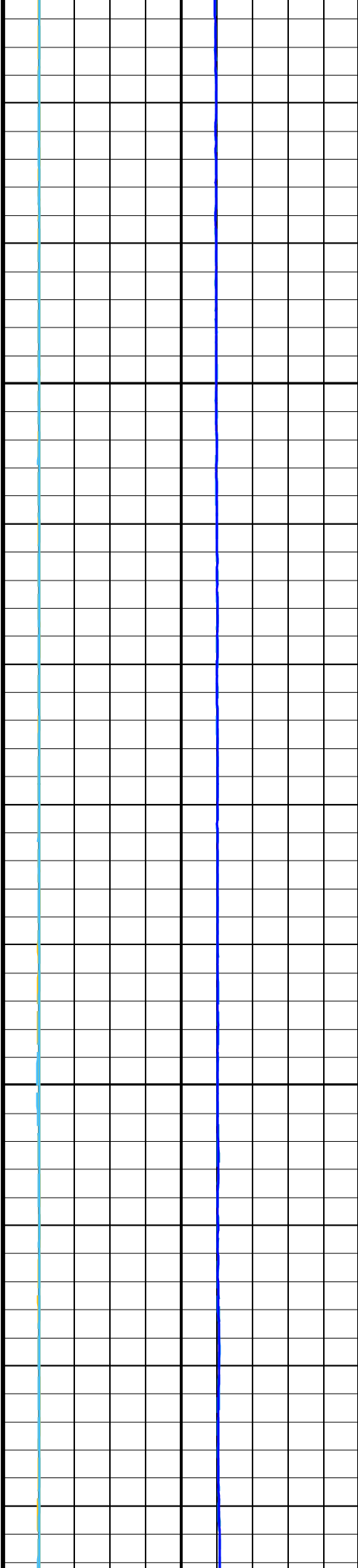


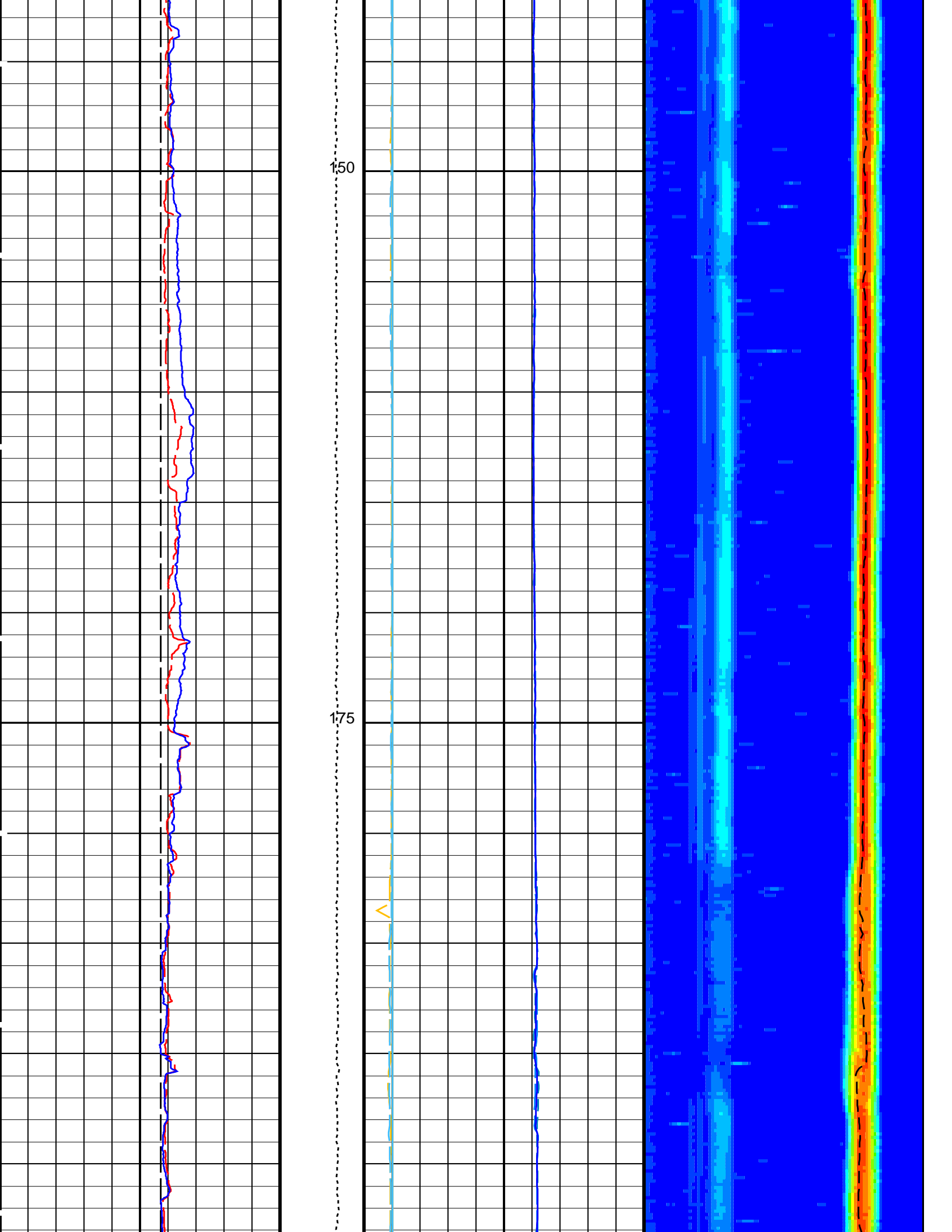


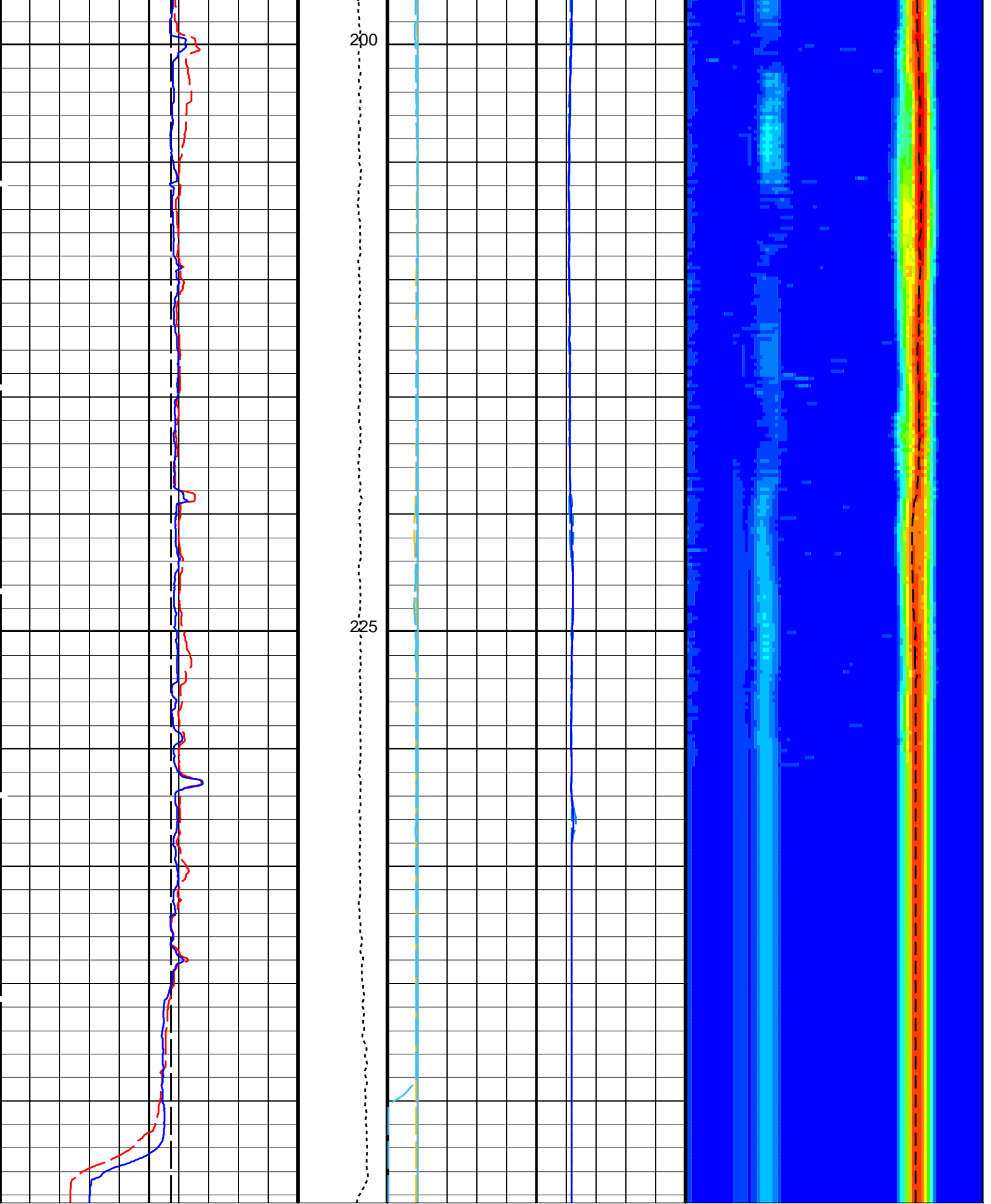


100

125







Bit Size (BS)
(IN)

Tension
(TENS)
(LBF)

Peak Coherence / RA - P & S Comp
(CHRP)
(-----)

Delta-T Comp / RA - P & S (DTRP)
(US/F)

Caliper 1 (C1)

Peak Coherence / TA - P & S Comp

Delta-T Shear / RA - P & S (DTRS)

0	Caliper 1 (C1) (IN)	20	0	(CHTP) (-----)	10	40	Delta-T Shear / RA - P & S (DTRG) (US/F)	240
0	Caliper 2 (C2) (IN)	20	-1	(-----)	9	Min	Amplitude	Max
						Rec.Array P&S Slow Proj. CVDL (SPR4) 40 (US/F) 240		
			440	Delta-T Comp / RA - P & S (DTRP) (US/F)	40			
			440	Delta-T Comp / TA - P & S (DTTP) (US/F)	40			
			440	Delta-T Comp - P & S (DT4P) (US/F)	40			
			440	Delta-T Shear / RA - P & S (DTRS) (US/F)	40			
			440	Delta-T Shear / TA - P & S (DTTS) (US/F)	40			
			440	Delta-T Shear - P & S (DT4S) (US/F)	40			
			-1	Peak Coherence / TA - P & S Shear (CHTS) (-----)	9			

PIP SUMMARY

Time Mark Every 60 S

Parameters

DLIS Name	Description	Value
DSST-B: Dipole Shear Imager - B		
BHS	Borehole Status	OPEN
CASF	Label Casing Function - Monopole P&S	50
COLL	Label Slowness Lower Limit - Monopole P&S Compressional	120 US/F
COUL	Label Slowness Upper Limit - Monopole P&S Compressional	240 US/F
DDE4	Digitizing Delay 4	0 US
DDEX	Digitizing Delay X	0 US
DSI4	Digitizer Sample Interval 4	10 US
DSIX	Digitizer Sample Interval X	40 US
DTF	Delta-T Fluid	189 US/F
DWC4	Digitizer Word Count 4	512
DWCX	Digitizer Word Count X	512
FILG	Label Fill Gap Control - Monopole P&S	COMP_SHEAR
LFC	Label Formation Character - Monopole P&S	DYNAMIC
MCS	Mean Casing Slowness	57 US/F
MTXG	Monopole Transmitter Geometry	186 IN
NWI4	Number Waveform Items 4	8
NWIX	Number Waveform Items X	0
RSMN	Label Shear/Compressional Minimum Ratio - Monopole P&S	1.4
RSMX	Label Shear/Compressional Maximum Ratio - Monopole P&S	2.12
RX1G	Receiver 1 Geometry	294 IN
RX2G	Receiver 2 Geometry	300 IN
RX3G	Receiver 3 Geometry	306 IN
RX4G	Receiver 4 Geometry	312 IN
RX5G	Receiver 5 Geometry	318 IN
RX6G	Receiver 6 Geometry	324 IN
RX7G	Receiver 7 Geometry	330 IN
RX8G	Receiver 8 Geometry	336 IN
SAM4	DSST Sonic Acquisition Mode 4 - Monopole Mode for P&S	ODD
SAMX	DSST Sonic Acquisition Mode X - Both Dipoles or Monopole Mode for P&S	OFF
SAS4	STC Sonic Array Status - Monopole P&S	255
SBO4	STC Search Band Offset - Monopole P&S	500 US
SBR4	STC Baseline Removal - Monopole P&S	ON
SBR4	STC Search Bandwidth - Monopole P&S	2000 US
SFC4	STC Formation Character - Monopole P&S	SELECTABLE
SFM4	STC Filter - Monopole P&S	B3-20K
SHLL	Label Slowness Lower Limit - Monopole P&S Shear	210 US/F
SHUL	Label Slowness Upper Limit - Monopole P&S Shear	240 US/F
SHL4	STC Slowness Lower Limit - Monopole P&S	40 US/F
SST4	STC Slowness Step - Monopole P&S	2 US/F

SSW4	STC Source Waveform – Monopole P&S	WF_SAM4	
STLL	Label Slowness Lower Limit – Monopole Stoneley	180	US/F
STUL	Label Slowness Upper Limit – Monopole Stoneley	780	US/F
SUL4	STC Slowness Upper Limit – Monopole P&S	440	US/F
SWD4	STC Slowness Width – Monopole P&S	10	US/F
TBF4	STC Time for Baseline Fill – Monopole P&S	300	US
TLL4	STC Time Lower Limit – Monopole P&S	150	US
TST4	STC Time Step – Monopole P&S	50	US
TUL4	STC Time Upper Limit – Monopole P&S	5110	US
TWD4	STC Time Width – Monopole P&S	1000	US
TWI4	STC Integration Time Window – Monopole P&S	500	US
TWSX	Transmitter Waveform Select X	0	
BHS	HNGS–BA: Hostile Natural Gamma Ray Sonde Borehole Status	OPEN	
BHS	EDTC–B: Enhanced DTS Cartridge Borehole Status	OPEN	
BS	System and Miscellaneous Bit Size	11.438	IN
DO	Depth Offset for Playback	0.0	M
PP	Playback Processing	RECOMPUTE	

Format: DSST_P_S_VDL_COLOR Vertical Scale: 1:200 Graphics File Created: 20-Sep-2013 13:30

OP System Version: 19C0–187

MEST–B	19C0–187	DTA–A	19C0–187
DSST–B	19C0–187	HNGC–B	19C0–187
HNGS–BA	19C0–187	EDTC–B	SKK–5169–EDTCB

Input DLIS Files

DEFAULT	FMS_DSI_055PUP	FN:69	PRODUCER	24–Aug–2013 13:33	249.3 M	–11.1 M
---------	----------------	-------	----------	-------------------	---------	---------

Output DLIS Files

DEFAULT	FMS_DSI_NGS_066PUP	FN:6	PRODUCER	20–Sep–2013 13:30
CLIENT	FMS_DSI_NGS_066PUC	FN:7	CUSTOMER	20–Sep–2013 13:30



Calibrations

MAXIS Field Log

Calibration and Check Summary

Measurement	Nominal	Master	Before	After	Change	Limit	Units
Enhanced DTS Cartridge Wellsite Calibration – EDTC Accelerometer Calibration							
Before: 23–Aug–2013 9:25							
EDTC Z–Axis Acceleration	9.810	N/A	9.753	N/A	N/A	N/A	M/S2
Enhanced DTS Cartridge Wellsite Calibration – Detector Calibration							
Before: 23–Aug–2013 9:29							
Gamma Ray (Jig – Bkg)	184.4	N/A	184.4	N/A	N/A	16.77	GAPI
Gamma Ray (Calibrated)	165.0	N/A	165.0	N/A	N/A	15.00	GAPI

Litho–Density Spectroscopy Cartridge – B / Equipment Identification

Primary Equipment:

LDSC Cartridge

LDSC – B

326

Auxiliary Equipment:
LDSC Housing

LDSH - A 303

Hostile Natural Gamma Ray Cartridge - B / Equipment Identification

Primary Equipment:
HNGC Cartridge

HNGC - B 300

Auxiliary Equipment:
HNGC Housing

HNGH - A 115

Enhanced DTS Cartridge / Equipment Identification

Primary Equipment:
EDTC Gamma Ray Detector
Enhanced DTS Cartridge

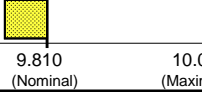
EDTG - A/B 8305
EDTC - B 8317

Auxiliary Equipment:
EDTC Housing

EDTH - B 8303

Enhanced DTS Cartridge Wellsite Calibration

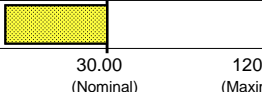
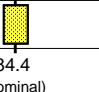
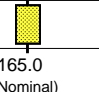
EDTC Accelerometer Calibration

Phase	EDTC Z-Axis Acceleration M/S2	Value
Before		9.753
	9.610 (Minimum) 9.810 (Nominal) 10.01 (Maximum)	

Before: 23-Aug-2013 9:25

Enhanced DTS Cartridge Wellsite Calibration

Detector Calibration

Phase	Gamma Ray Background GAPI	Value	Phase	Gamma Ray (Jig - Bkg) GAPI	Value	Phase	Gamma Ray (Calibrated) GAPI	Value
Before		10.48	Before		184.4	Before		165.0
	0 (Minimum) 30.00 (Nominal) 120.0 (Maximum)			167.7 (Minimum) 184.4 (Nominal) 201.2 (Maximum)			150.0 (Minimum) 165.0 (Nominal) 180.0 (Maximum)	

Before: 23-Aug-2013 9:29

Company: **Lamont Doherty Earth Observatory**

Schlumberger

Well: **Expedition 346, Site U1423C**

Field: **Asian Monsoon**

Rig: **JOIDES Resolution**

Country: **USA**

DSI
P&S