

Production String	(in)	(m)	Well Schematic	(m)	(in)	Casing String
	OP	ID		MD	MD	

Kelly Bushing Elevation

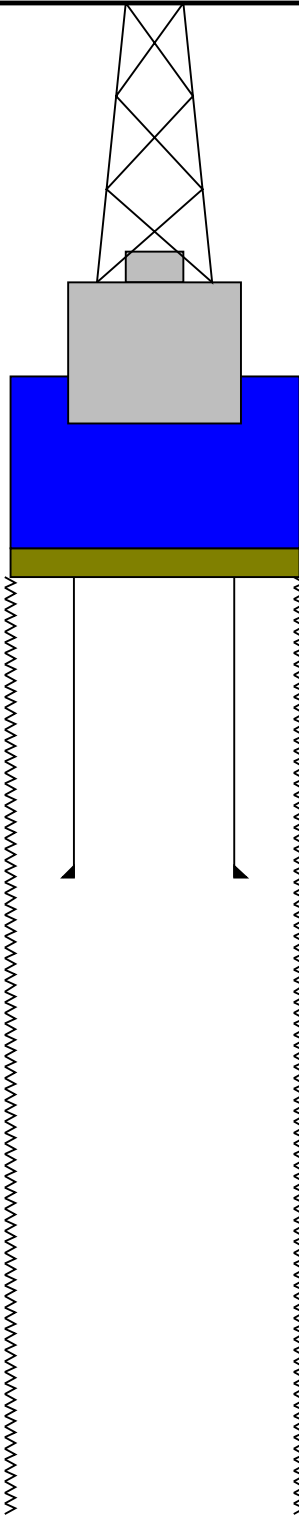
Derrick Floor Elevation

Mean Sea Level

-1796.8

-1796.8

-1785.8



0.0

9.875

4.000

Sea Floor

80.0

5.500

4.000

Bit

249.1

9.875

TD - Driller



## Downlog 1:200 Scale

MAXIS Field Log

### Input DLIS Files

DEFAULT	FMS_DSI_057PUP	FN:73	PRODUCER	24-Aug-2013 13:46	249.9 M	-11.3 M
---------	----------------	-------	----------	-------------------	---------	---------

### Output DLIS Files

DEFAULT	FMS_DSI_NGS_064PUP	FN:2	PRODUCER	20-Sep-2013 13:25	249.9 M	-11.3 M
CLIENT	FMS_DSI_NGS_064PUC	FN:3	CUSTOMER	20-Sep-2013 13:25	249.9 M	-11.3 M

### OP System Version: 19C0-187

MEST-B	19C0-187	DTA-A	19C0-187
DSST-B	19C0-187	HNGC-B	19C0-187
HNGS-BA	19C0-187	EDTC-B	SKK-5169-EDTCB

PIP SUMMARY

Time Mark Every 60 S

Caliper 2 (C2)  
0 (IN) 20

Caliper 1 (C1)  
0 (IN) 20

Bit Size (BS)  
0 (IN) 20

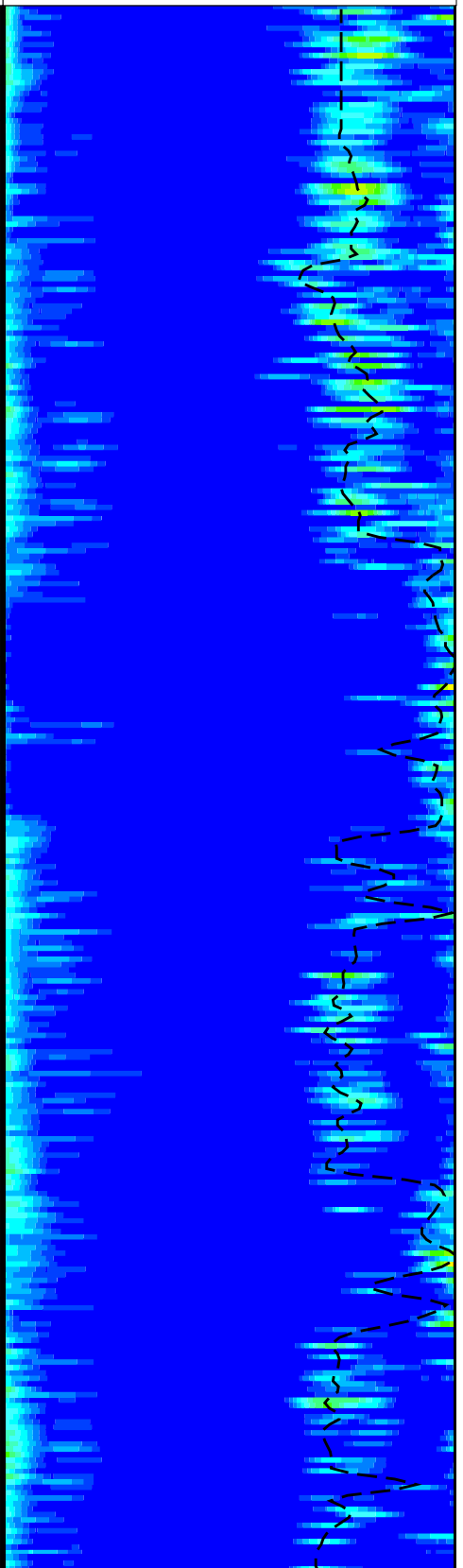
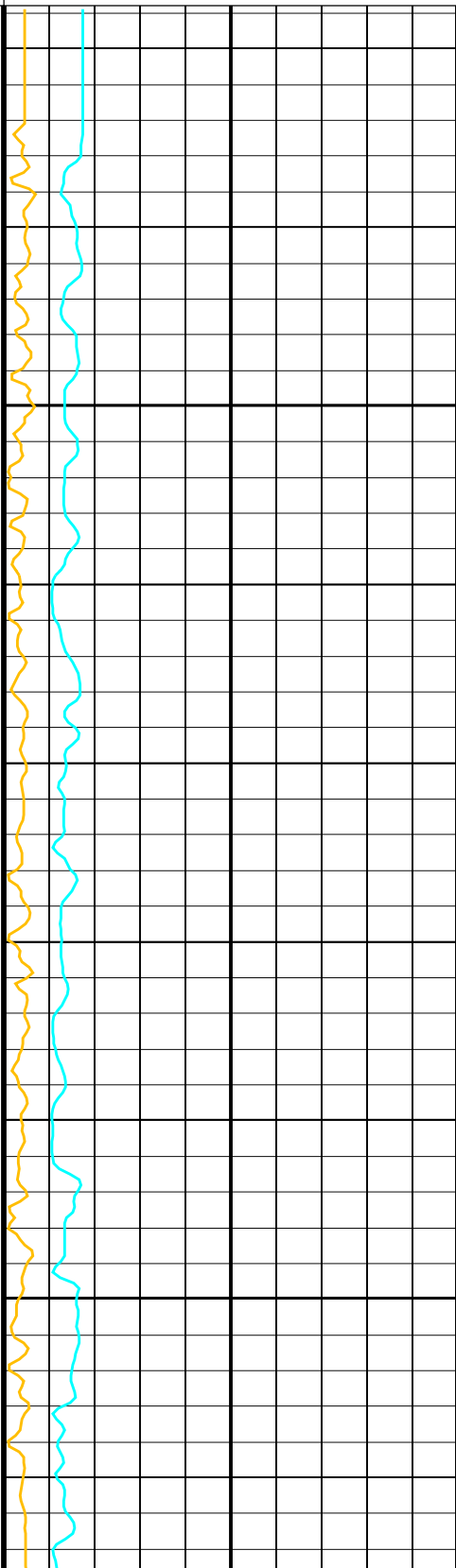
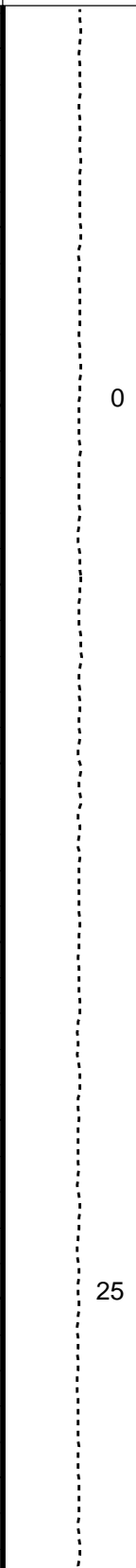
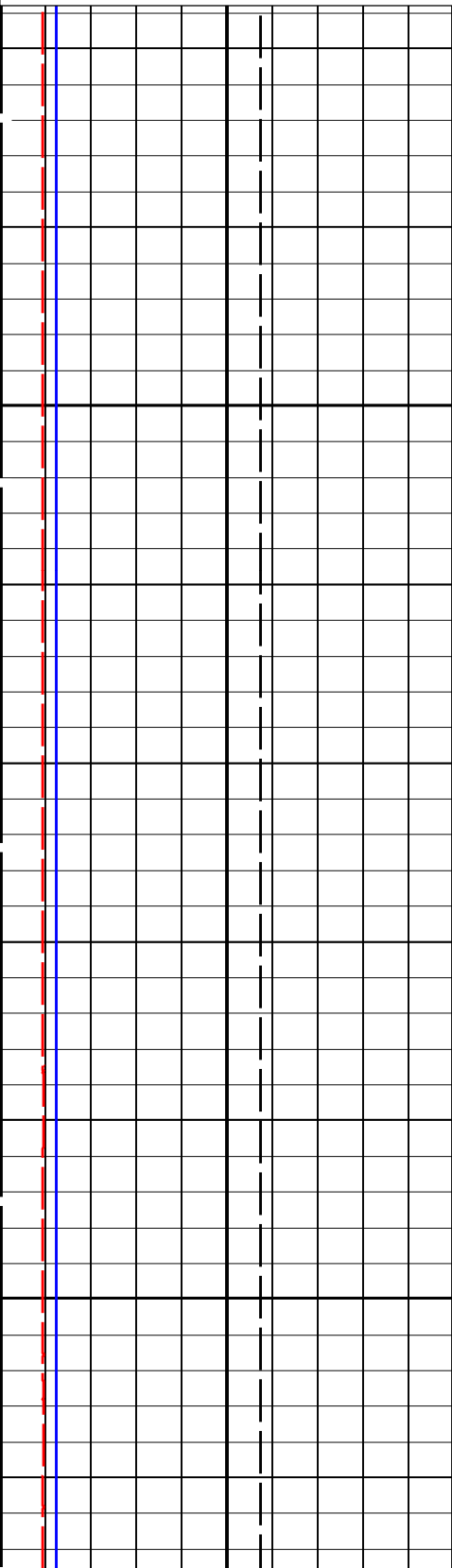
Tension  
(TENS)  
(LBF)  
0 5000

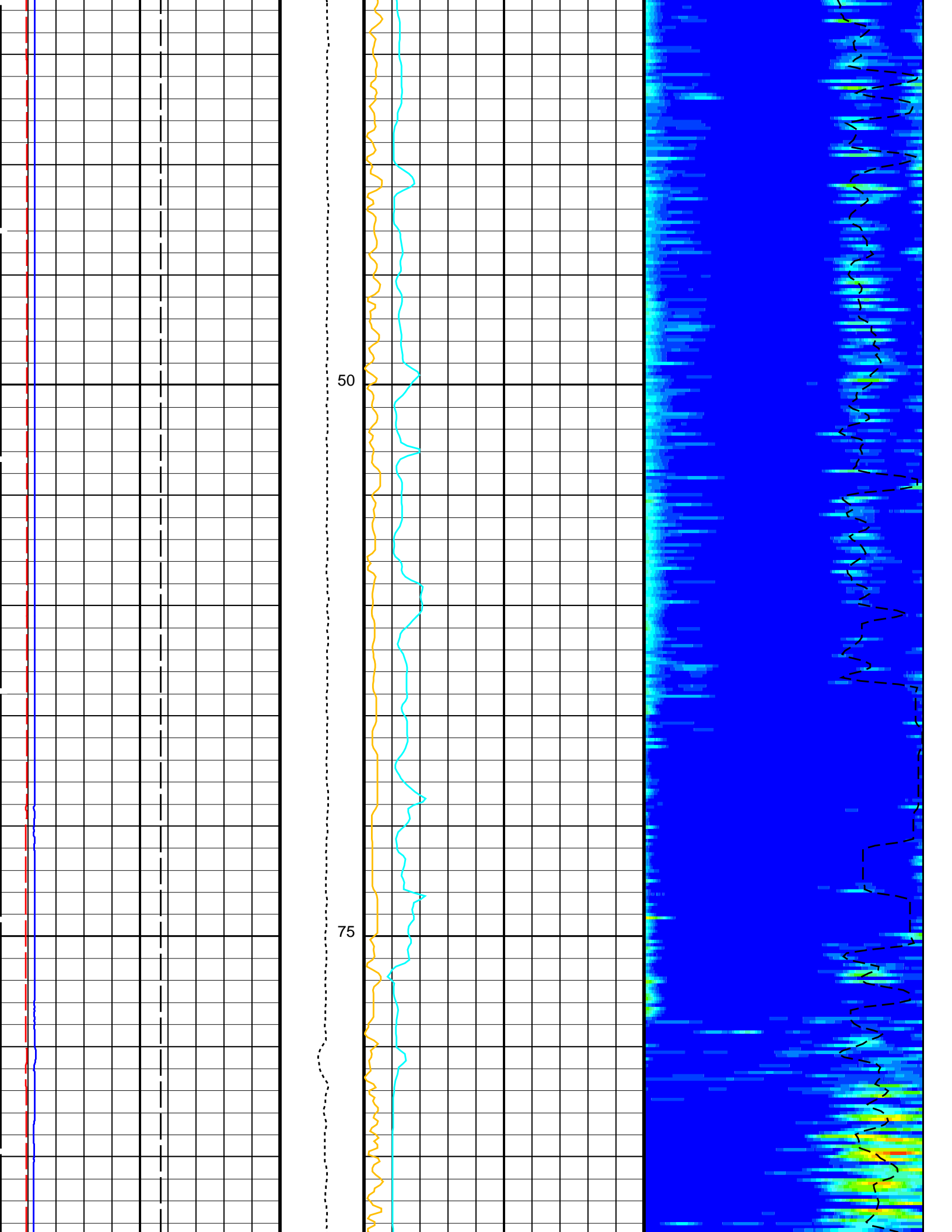
Sonic Velocity (SVEL)  
1000 (M/S) 6000

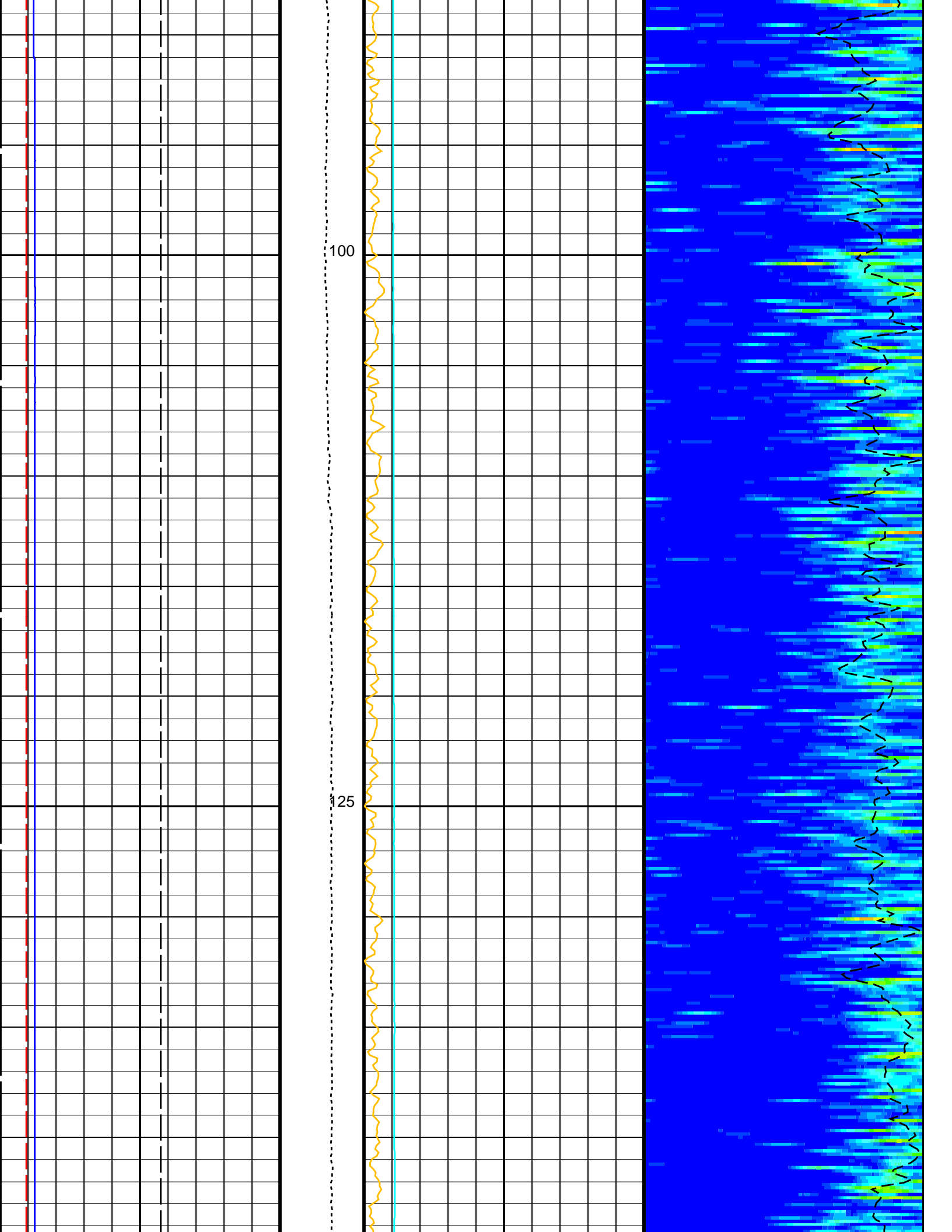
Peak Coherence / RA - Upper Dipole  
(CHR2)  
0 (----) 10

Min Amplitude Max  
Rec.Array U.Dipole Slow Proj. CVDL  
(SPR2)  
(US/F) 300 1200

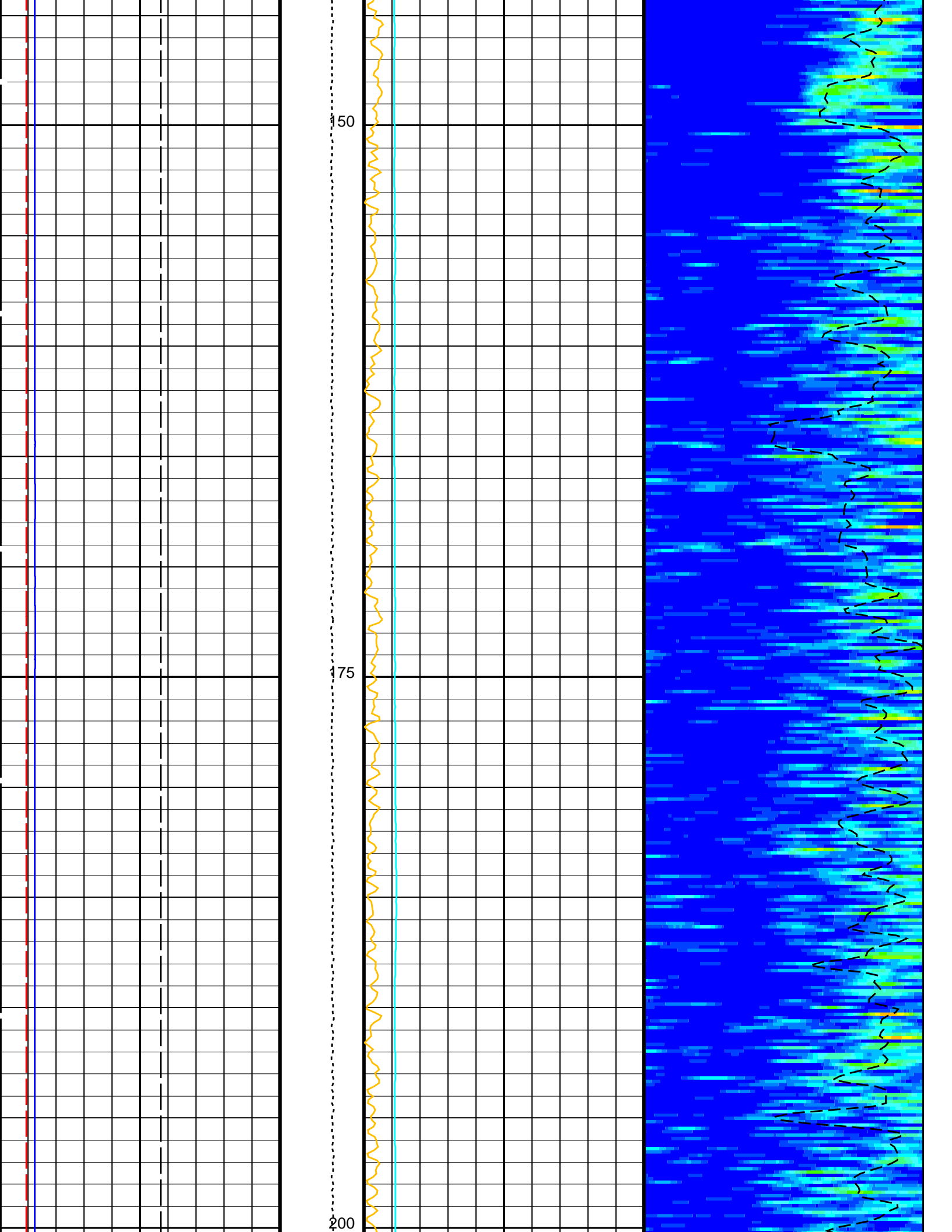
Delta-T Shear / RA - Upper Dipole  
(DT2R)  
(US/F) 300 1200

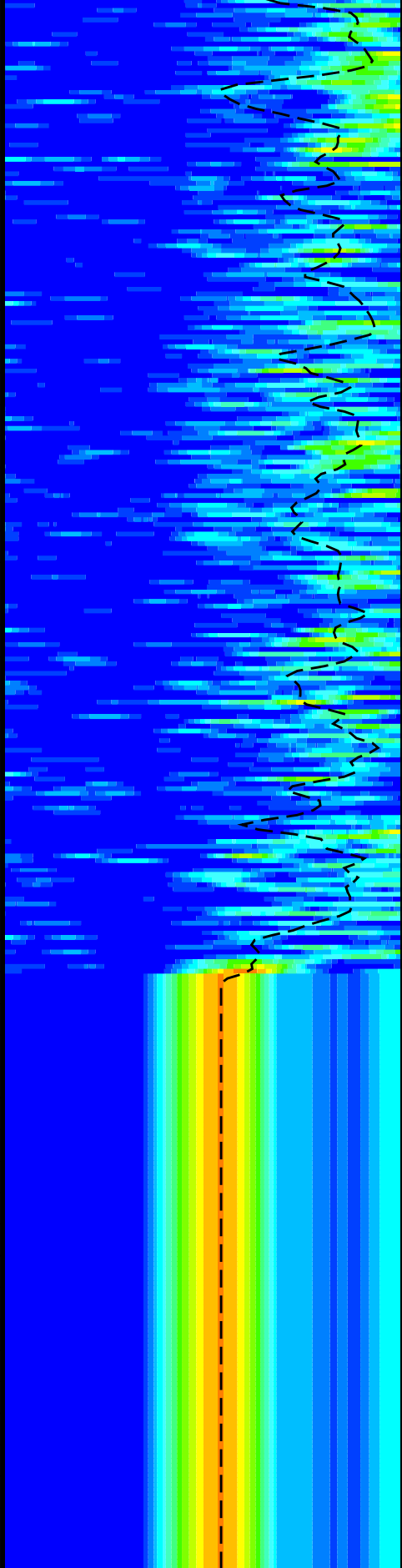
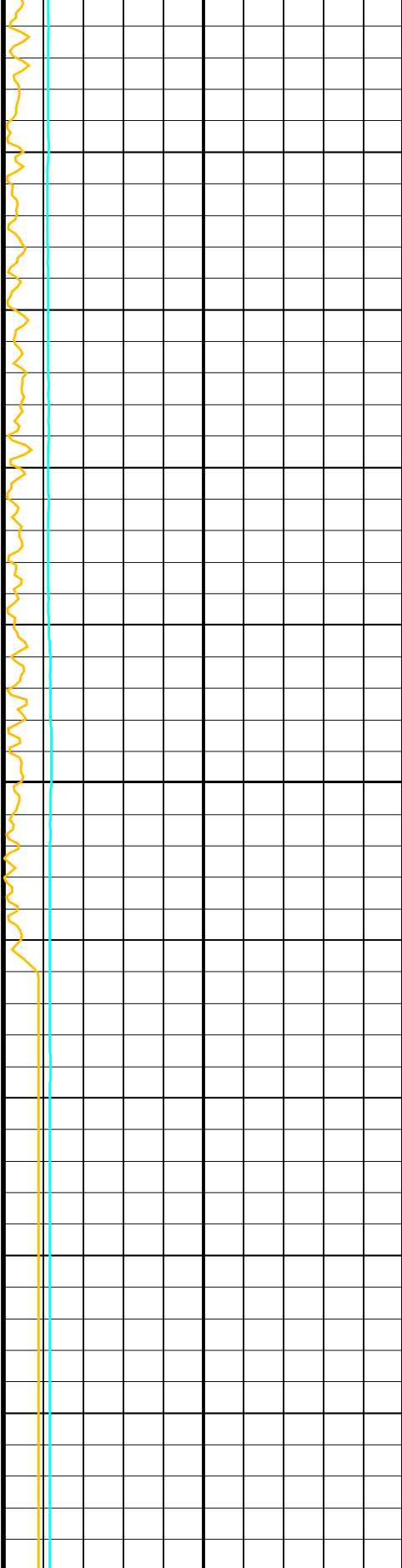
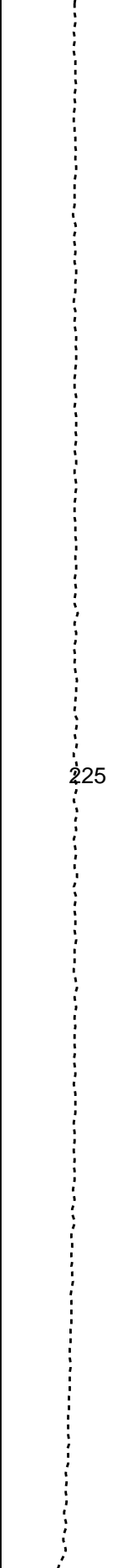
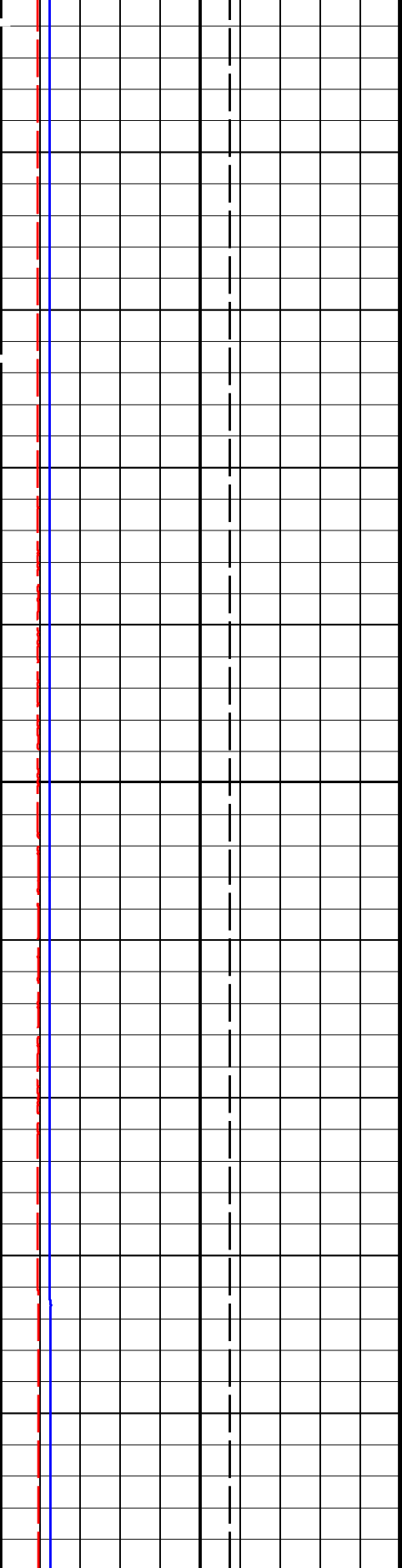












Bit Size (BS)  
(IN)

0 20

Tension  
(TENS)  
(LBF)

0 5000

Peak Coherence / RA - Upper Dipole  
(CHR2)

0 10

(-----)

Delta-T Shear / RA - Upper Dipole  
(DT2R)  
(US/F)

300 1200

Caliper 1 (C1)  
(IN)

0 20

Sonic Velocity (SVEL)  
(M/S)

1000 6000

Min Amplitude Max

Rec.Array U.Dipole Slow Proj. CVDL

			300	(SPR2) (US/F)	1200
Caliper 2 (C2)					
0	(IN)	20			

**PIP SUMMARY**

Time Mark Every 60 S

**Parameters**

DLIS Name	Description	Value	
<b>DSST-B: Dipole Shear Imager - B</b>			
DDE2	Digitizing Delay 2	0	US
DDEX	Digitizing Delay X	0	US
DLCS	Label Compressional Source - Dipole Shear	USE	
DSHL	Label Slowness Lower Limit - Dipole Shear	300	US/F
DSHU	Label Slowness Upper Limit - Dipole Shear	1200	US/F
DSI2	Digitizer Sample Interval 2	40	US
DSIX	Digitizer Sample Interval X	40	US
DTCS	Compressional Delta-T Source for DTCO Channel	PS_COMP	
DWC2	Digitizer Word Count 2	512	
DWCX	Digitizer Word Count X	512	
NWI2	Number Waveform Items 2	8	
NWIX	Number Waveform Items X	0	
RX1G	Receiver 1 Geometry	294	IN
RX2G	Receiver 2 Geometry	300	IN
RX3G	Receiver 3 Geometry	306	IN
RX4G	Receiver 4 Geometry	312	IN
RX5G	Receiver 5 Geometry	318	IN
RX6G	Receiver 6 Geometry	324	IN
RX7G	Receiver 7 Geometry	330	IN
RX8G	Receiver 8 Geometry	336	IN
SAM2	DSST Sonic Acquisition Mode 2 - Upper Dipole Mode	ODD	
SAMX	DSST Sonic Acquisition Mode X - Both Dipoles or Monopole Mode for Expert	OFF	
SAS2	STC Sonic Array Status - Upper Dipole	255	
SBO2	STC Search Band Offset - Upper Dipole	3000	US
SBW2	STC Search Bandwidth - Upper Dipole	8000	US
SFC2	STC Formation Character - Upper Dipole	SELECTABLE	
SFM2	STC Filter - Upper Dipole	B1-2K	
SLL2	STC Slowness Lower Limit - Upper Dipole	300	US/F
SST2	STC Slowness Step - Upper Dipole	4	US/F
SSW2	STC Source Waveform - Upper Dipole	WF_SAM2	
SUL2	STC Slowness Upper Limit - Upper Dipole	1200	US/F
SWD2	STC Slowness Width - Upper Dipole	40	US/F
TBF2	STC Time for Baseline Fill - Upper Dipole	0	US
TLL2	STC Time Lower Limit - Upper Dipole	2300	US
TST2	STC Time Step - Upper Dipole	200	US
TUL2	STC Time Upper Limit - Upper Dipole	20200	US
TWD2	STC Time Width - Upper Dipole	2000	US
TWI2	STC Integration Time Window - Upper Dipole	1600	US
TWSX	Transmitter Waveform Select X	0	
UTXG	Upper Dipole Transmitter Geometry	162	IN
<b>System and Miscellaneous</b>			
BS	Bit Size	11.438	IN
DO	Depth Offset for Playback	0.0	M
PP	Playback Processing	RECOMPUTE	

Format: DSST\_UPPER\_DIPOLE\_VDL\_COLOR    Vertical Scale: 1:200    Graphics File Created: 20-Sep-2013 13:25

**OP System Version: 19C0-187**

MEST-B	19C0-187	DTA-A	19C0-187
DSST-B	19C0-187	HNGC-B	19C0-187
HNGS-BA	19C0-187	EDTC-B	SKK-5169-EDTCB

**Input DLIS Files**

DEFAULT	FMS_DSI_057PUP	FN:73	PRODUCER	24-Aug-2013 13:46	249.9 M	-11.3 M
---------	----------------	-------	----------	-------------------	---------	---------

**Output DLIS Files**

DEFAULT	FMS_DSI_NGS_064PUP	FN:2	PRODUCER	20-Sep-2013 13:25
CLIENT	FMS_DSI_NGS_064PUC	FN:3	CUSTOMER	20-Sep-2013 13:25

**Input DLIS Files**

DEFAULT	FMS_DSI_056PUP	FN:71	PRODUCER	24-Aug-2013 13:41	250.5 M	89.2 M
---------	----------------	-------	----------	-------------------	---------	--------

**Output DLIS Files**

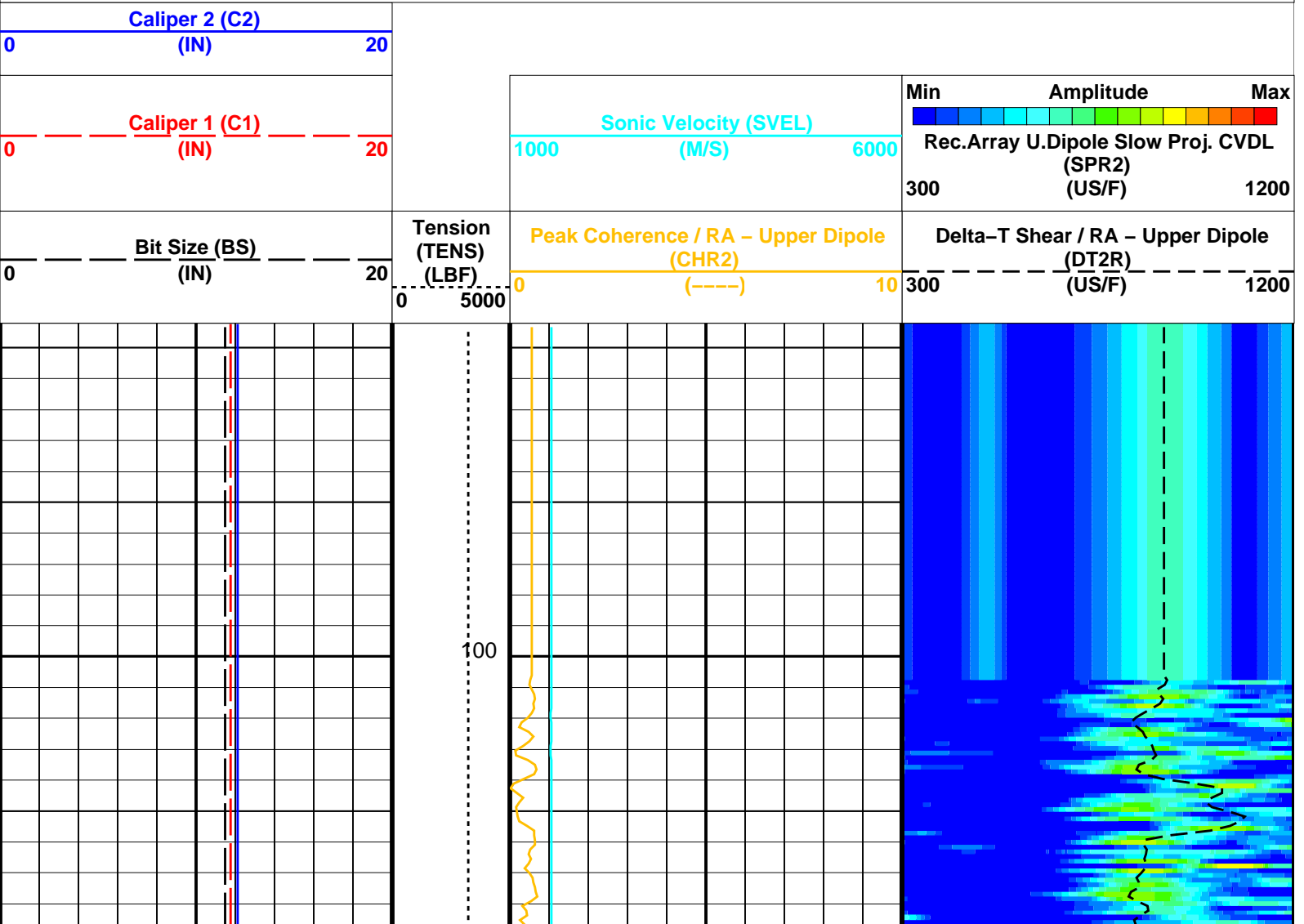
DEFAULT	FMS_DSI_NGS_065PUP	FN:4	PRODUCER	20-Sep-2013 13:29	250.5 M	89.2 M
CLIENT	FMS_DSI_NGS_065PUC	FN:5	CUSTOMER	20-Sep-2013 13:29	250.5 M	89.2 M

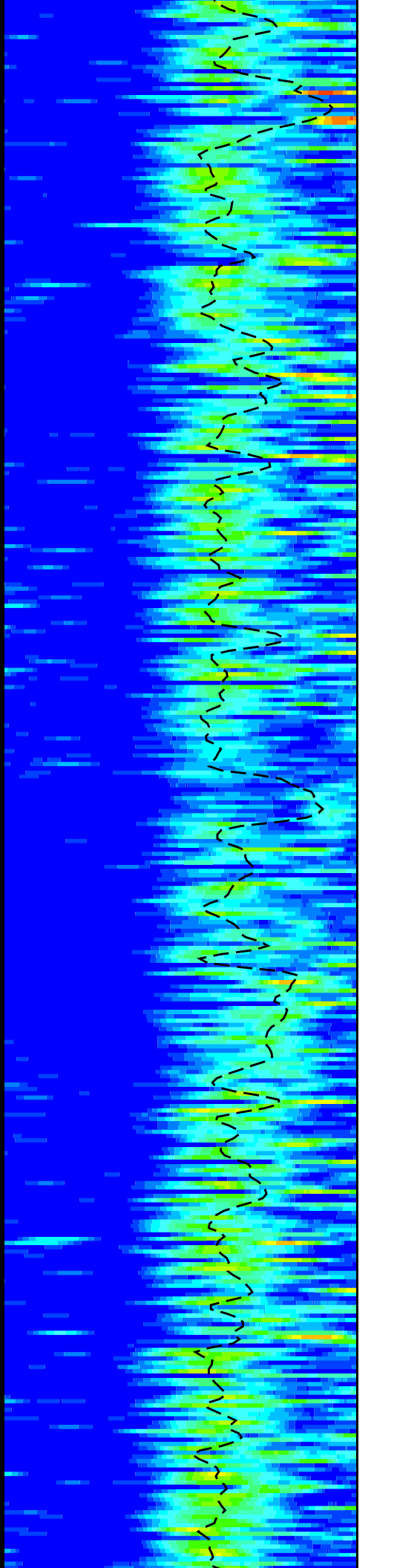
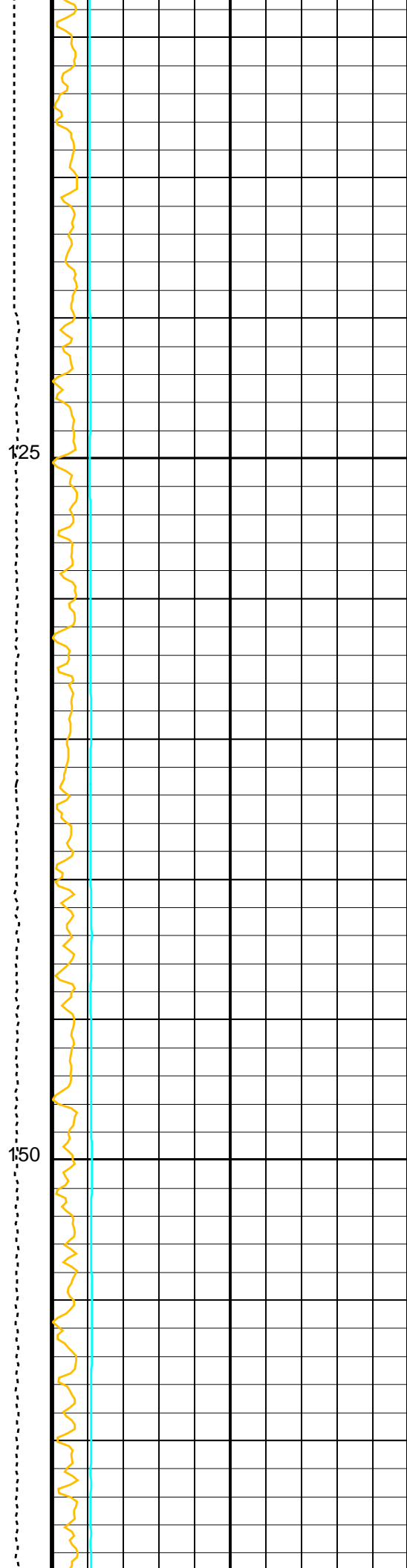
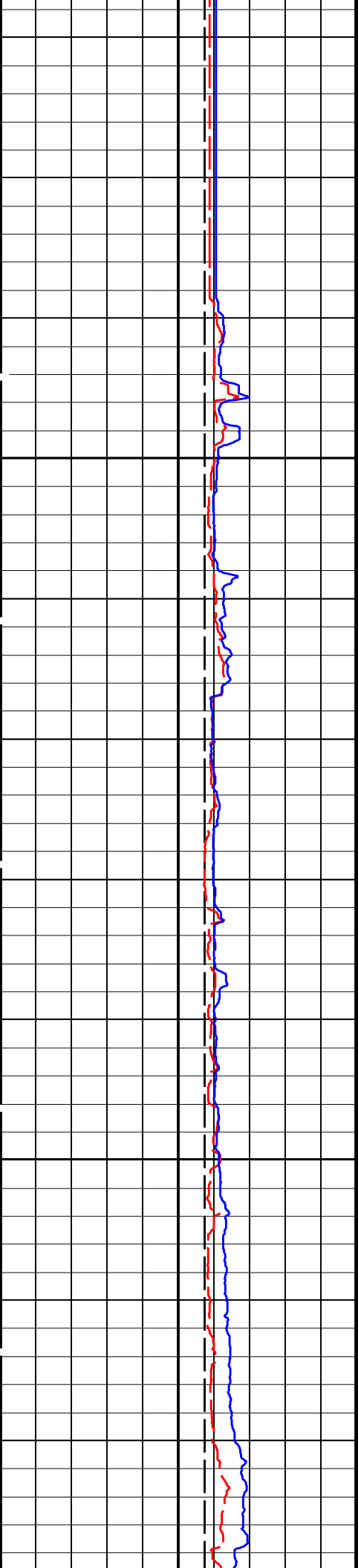
**OP System Version: 19C0-187**

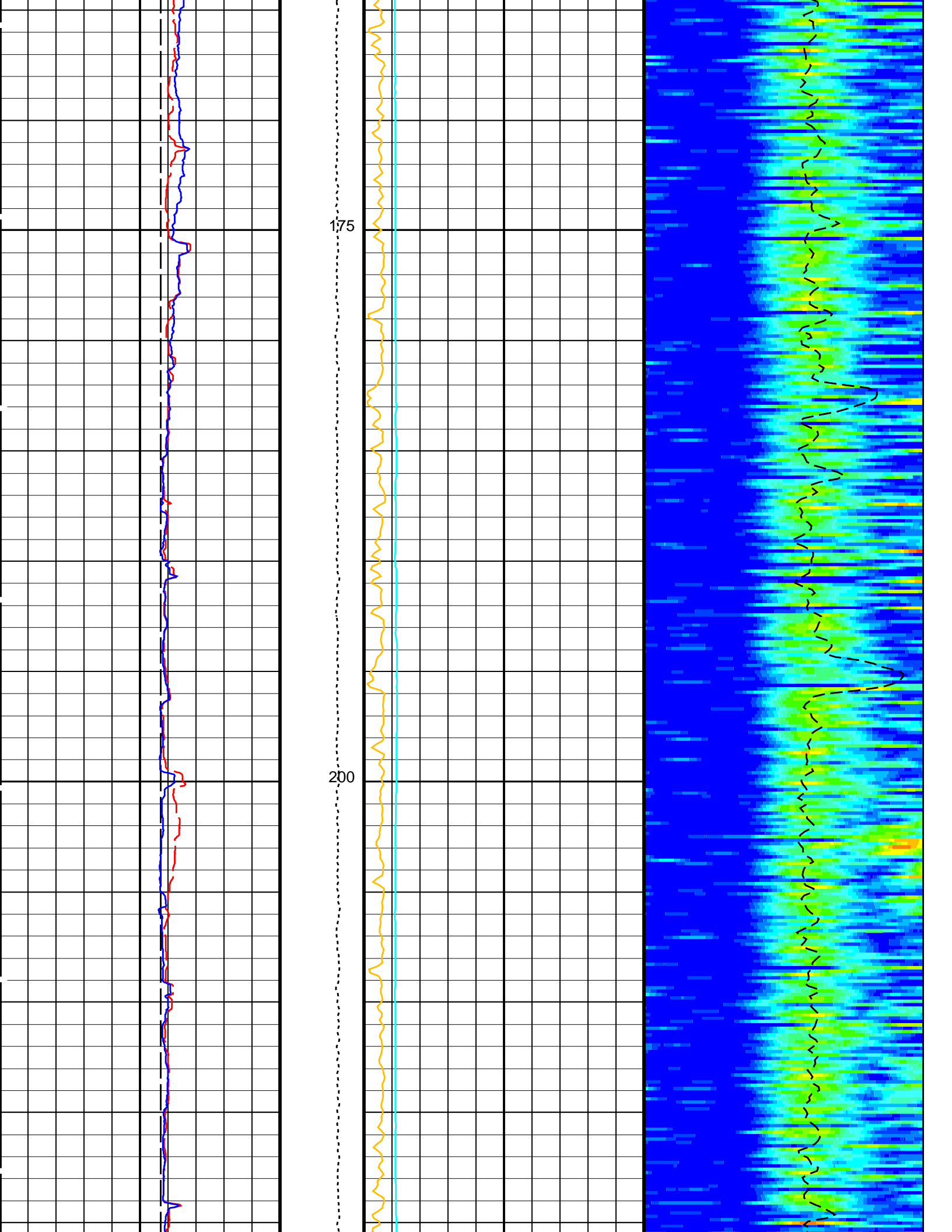
MEST-B	19C0-187	DTA-A	19C0-187
DSST-B	19C0-187	HNGC-B	19C0-187
HNGS-BA	19C0-187	EDTC-B	SKK-5169-EDTCB

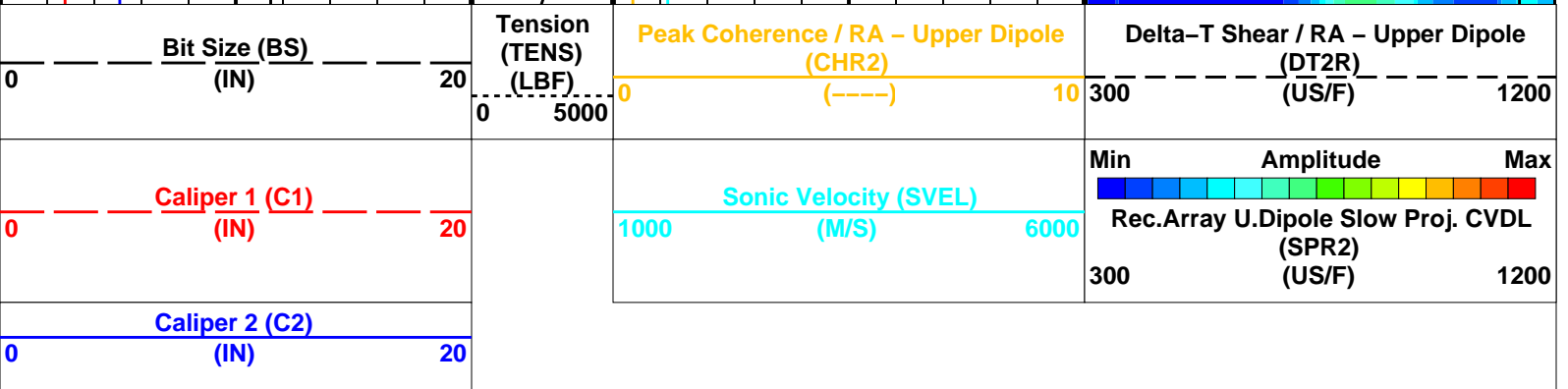
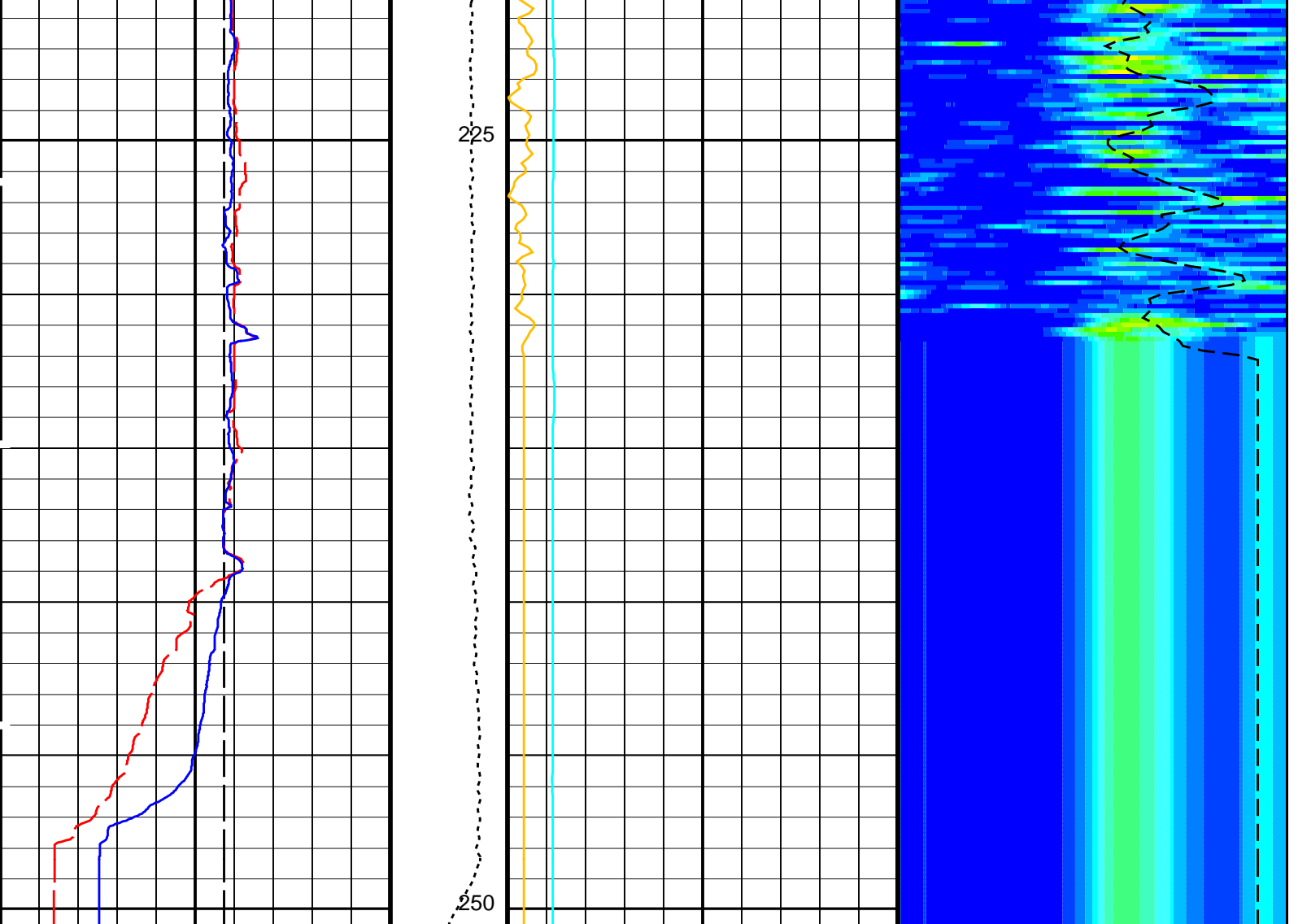
**PIP SUMMARY**

Time Mark Every 60 S









PIP SUMMARY

Time Mark Every 60 S

Parameters

DLIS Name	Description	Value
DSST-B: Dipole Shear Imager - B		
DDE2	Digitizing Delay 2	0 US
DDEX	Digitizing Delay X	0 US
DLCS	Label Compressional Source - Dipole Shear	USE
DSHL	Label Slowness Lower Limit - Dipole Shear	300 US/F
DSHU	Label Slowness Upper Limit - Dipole Shear	1200 US/F
DSI2	Digitizer Sample Interval 2	40 US
DSIX	Digitizer Sample Interval X	40 US
DTCS	Compressional Delta-T Source for DTCO Channel	PS_COMP
DWC2	Digitizer Word Count 2	512
DWCX	Digitizer Word Count X	512
NWI2	Number Waveform Items 2	8
NWIX	Number Waveform Items X	0
RX1G	Receiver 1 Geometry	294 IN
RX2G	Receiver 2 Geometry	294 IN

RX2G	Receiver 2 Geometry	300	IN
RX3G	Receiver 3 Geometry	306	IN
RX4G	Receiver 4 Geometry	312	IN
RX5G	Receiver 5 Geometry	318	IN
RX6G	Receiver 6 Geometry	324	IN
RX7G	Receiver 7 Geometry	330	IN
RX8G	Receiver 8 Geometry	336	IN
SAM2	DSST Sonic Acquisition Mode 2 – Upper Dipole Mode	ODD	
SAMX	DSST Sonic Acquisition Mode X – Both Dipoles or Monopole Mode for Expert	OFF	
SAS2	STC Sonic Array Status – Upper Dipole	255	
SBO2	STC Search Band Offset – Upper Dipole	3000	US
SBW2	STC Search Bandwidth – Upper Dipole	8000	US
SFC2	STC Formation Character – Upper Dipole	SELECTABLE	
SFM2	STC Filter – Upper Dipole	B1-2K	
SLL2	STC Slowness Lower Limit – Upper Dipole	300	US/F
SST2	STC Slowness Step – Upper Dipole	4	US/F
SSW2	STC Source Waveform – Upper Dipole	WF_SAM2	
SUL2	STC Slowness Upper Limit – Upper Dipole	1200	US/F
SWD2	STC Slowness Width – Upper Dipole	40	US/F
TBF2	STC Time for Baseline Fill – Upper Dipole	0	US
TLL2	STC Time Lower Limit – Upper Dipole	2300	US
TST2	STC Time Step – Upper Dipole	200	US
TUL2	STC Time Upper Limit – Upper Dipole	20200	US
TWD2	STC Time Width – Upper Dipole	2000	US
TWI2	STC Integration Time Window – Upper Dipole	1600	US
TWSX	Transmitter Waveform Select X	0	
UTXG	Upper Dipole Transmitter Geometry	162	IN
	System and Miscellaneous		
BS	Bit Size	11.438	IN
DO	Depth Offset for Playback	0.0	M
PP	Playback Processing	RECOMPUTE	

Format: DSST\_UPPER\_DIPOLE\_VDL\_COLOR Vertical Scale: 1:200 Graphics File Created: 20-Sep-2013 13:29

## OP System Version: 19C0-187

MEST-B	19C0-187	DTA-A	19C0-187
DSST-B	19C0-187	HNGC-B	19C0-187
HNGS-BA	19C0-187	EDTC-B	SKK-5169-EDTCB

### Input DLIS Files

DEFAULT	FMS_DSI_056PUP	FN:71	PRODUCER	24-Aug-2013 13:41	250.5 M	89.2 M
---------	----------------	-------	----------	-------------------	---------	--------

### Output DLIS Files

DEFAULT	FMS_DSI_NGS_065PUP	FN:4	PRODUCER	20-Sep-2013 13:29		
CLIENT	FMS_DSI_NGS_065PUC	FN:5	CUSTOMER	20-Sep-2013 13:29		

**Schlumberger**

**Main Pass  
1:200 Scale**

MAXIS Field Log

### Input DLIS Files

DEFAULT	FMS_DSI_055PUP	FN:69	PRODUCER	24-Aug-2013 13:33	249.3 M	-11.1 M
---------	----------------	-------	----------	-------------------	---------	---------

### Output DLIS Files

DEFAULT	FMS_DSI_NGS_066PUP	FN:6	PRODUCER	20-Sep-2013 13:30	249.3 M	-11.1 M
CLIENT	FMS_DSI_NGS_066PUC	FN:7	CUSTOMER	20-Sep-2013 13:30	249.3 M	-11.1 M

OP System Version: 19C0-187



MEST-B 19C0-187  
DSST-B 19C0-187  
HNGS-BA 19C0-187

DTA-A  
HNGC-B  
EDTC-B

19C0-187  
19C0-187  
SKK-5169-EDTCB

### PIP SUMMARY

Time Mark Every 60 S

Caliper 2 (C2)  
0 (IN) 20

Caliper 1 (C1)  
0 (IN) 20

Bit Size (BS)  
0 (IN) 20

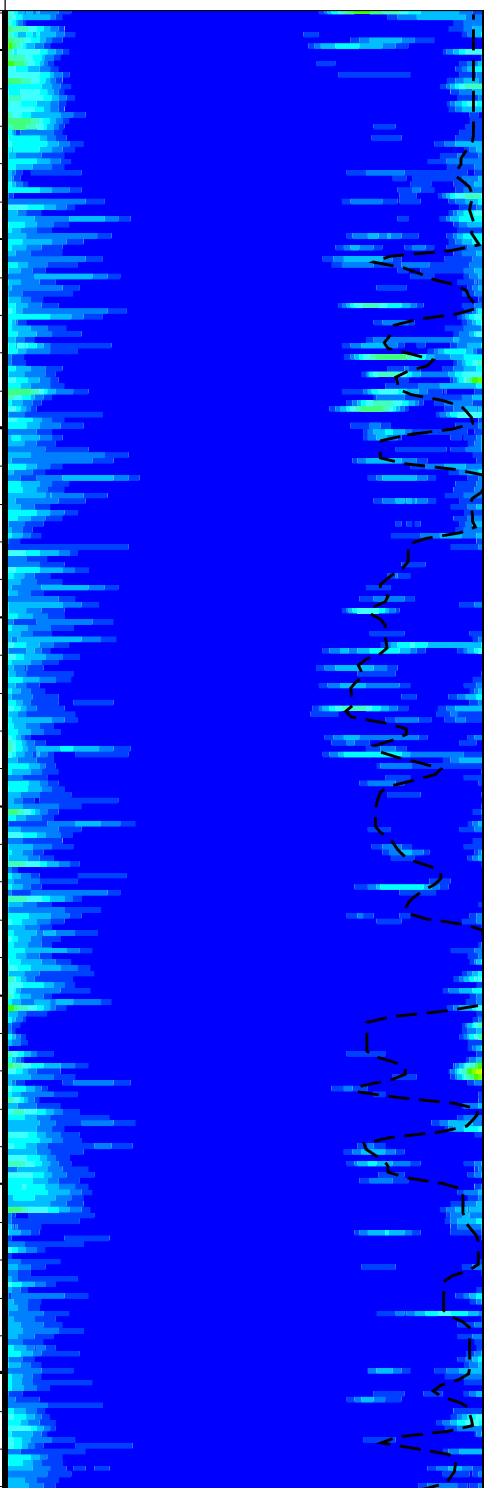
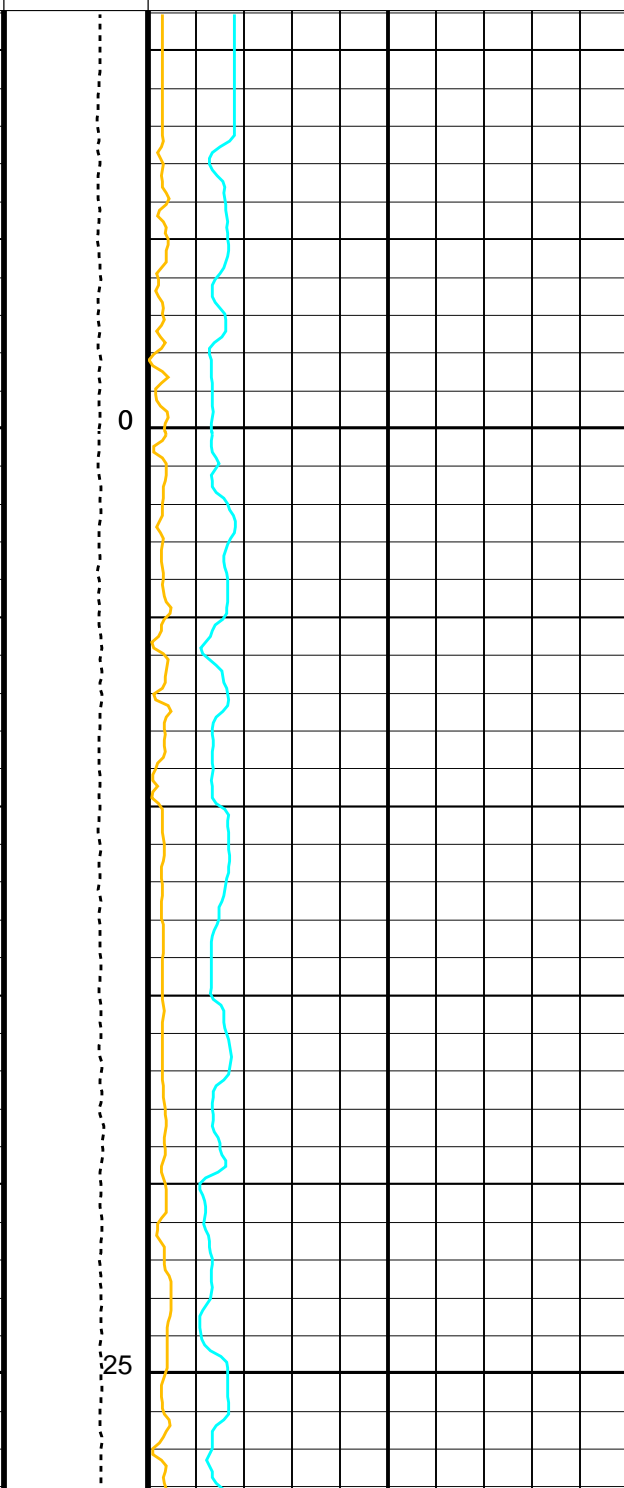
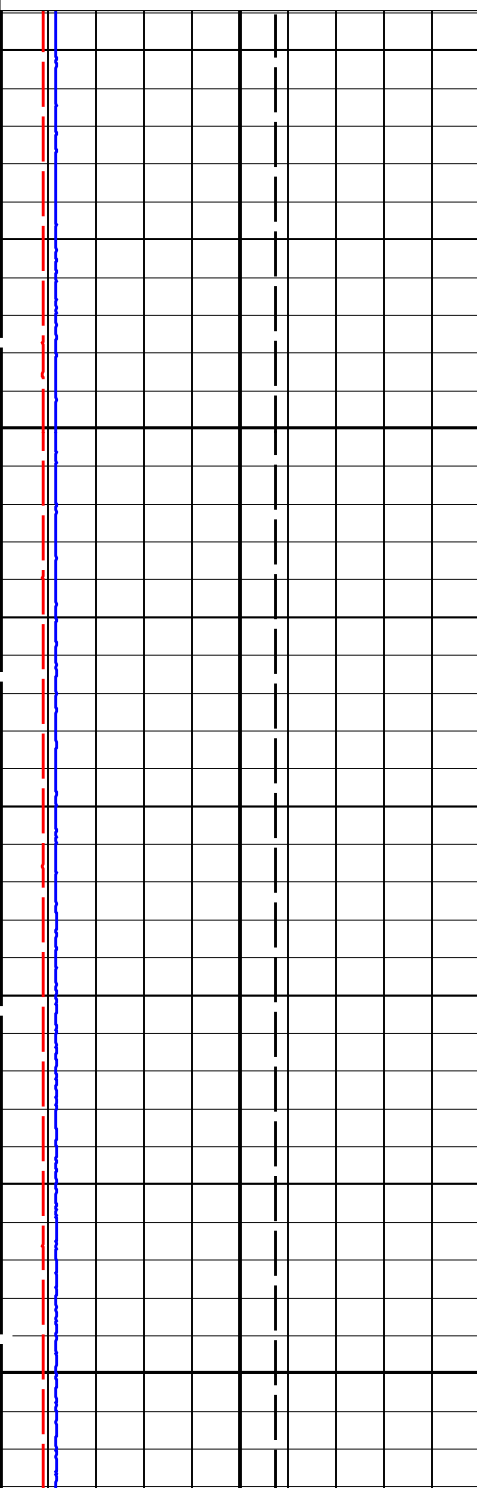
Tension  
(TENS)  
(LBF)  
0 5000

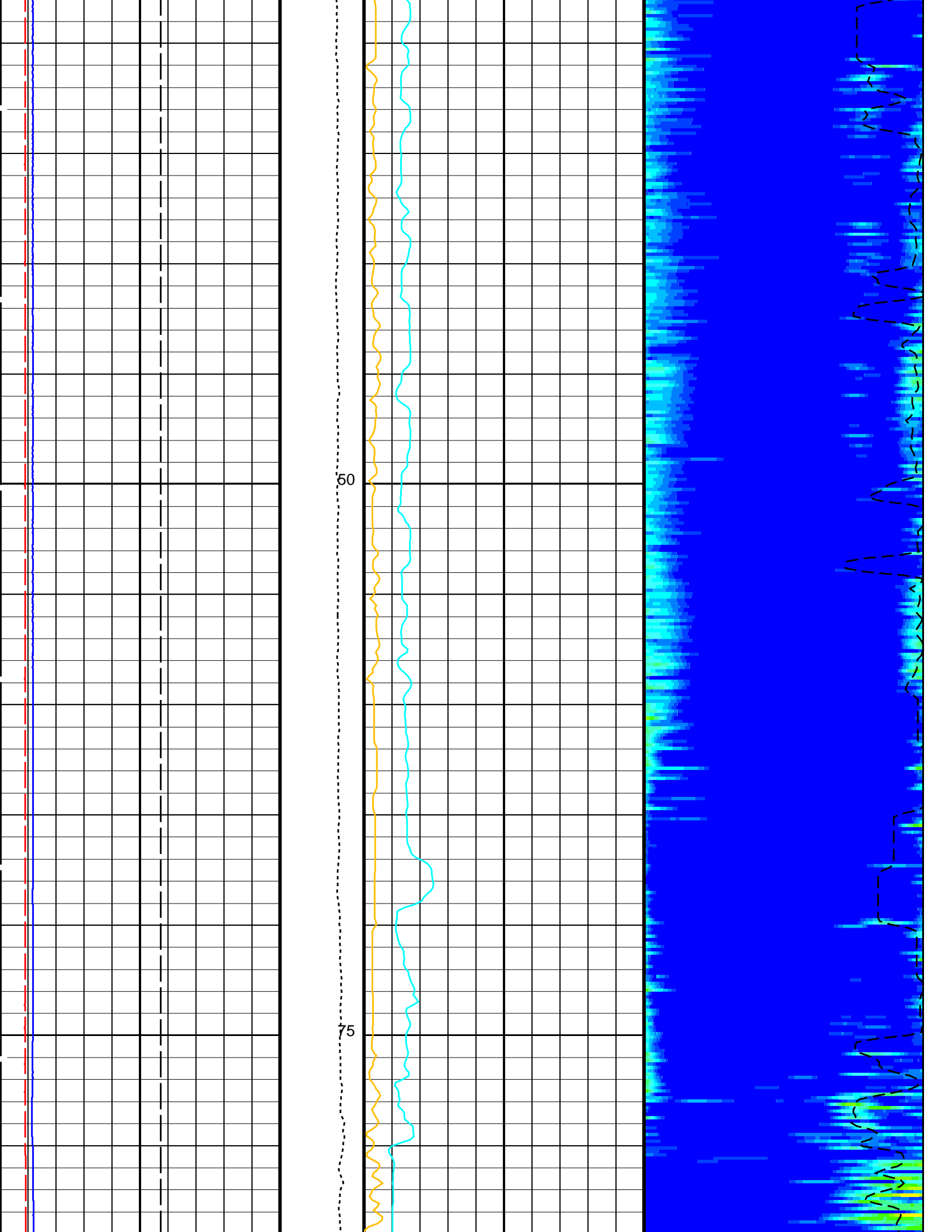
Sonic Velocity (SVEL)  
1000 (M/S) 6000

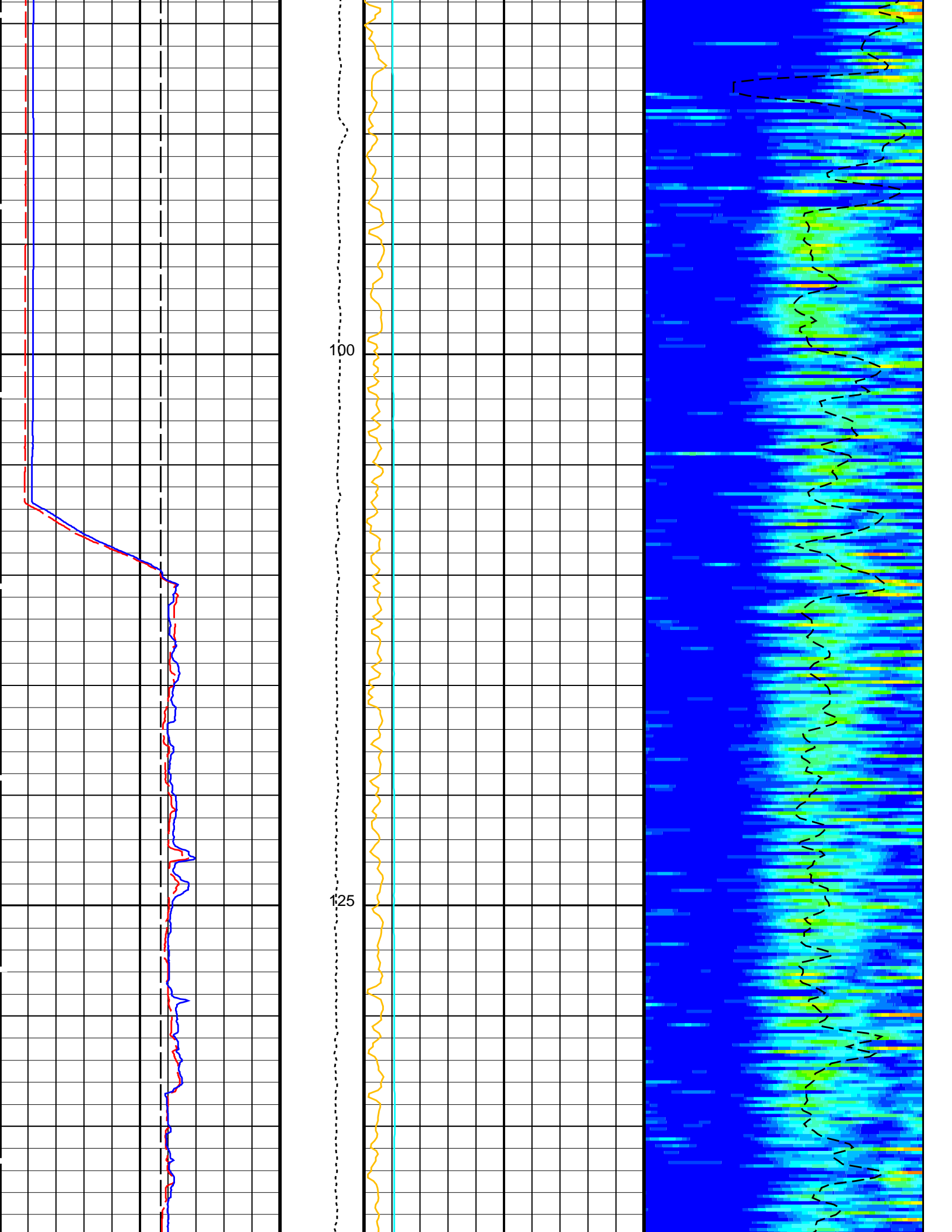
Peak Coherence / RA - Upper Dipole  
(CHR2)  
0 (-----) 10

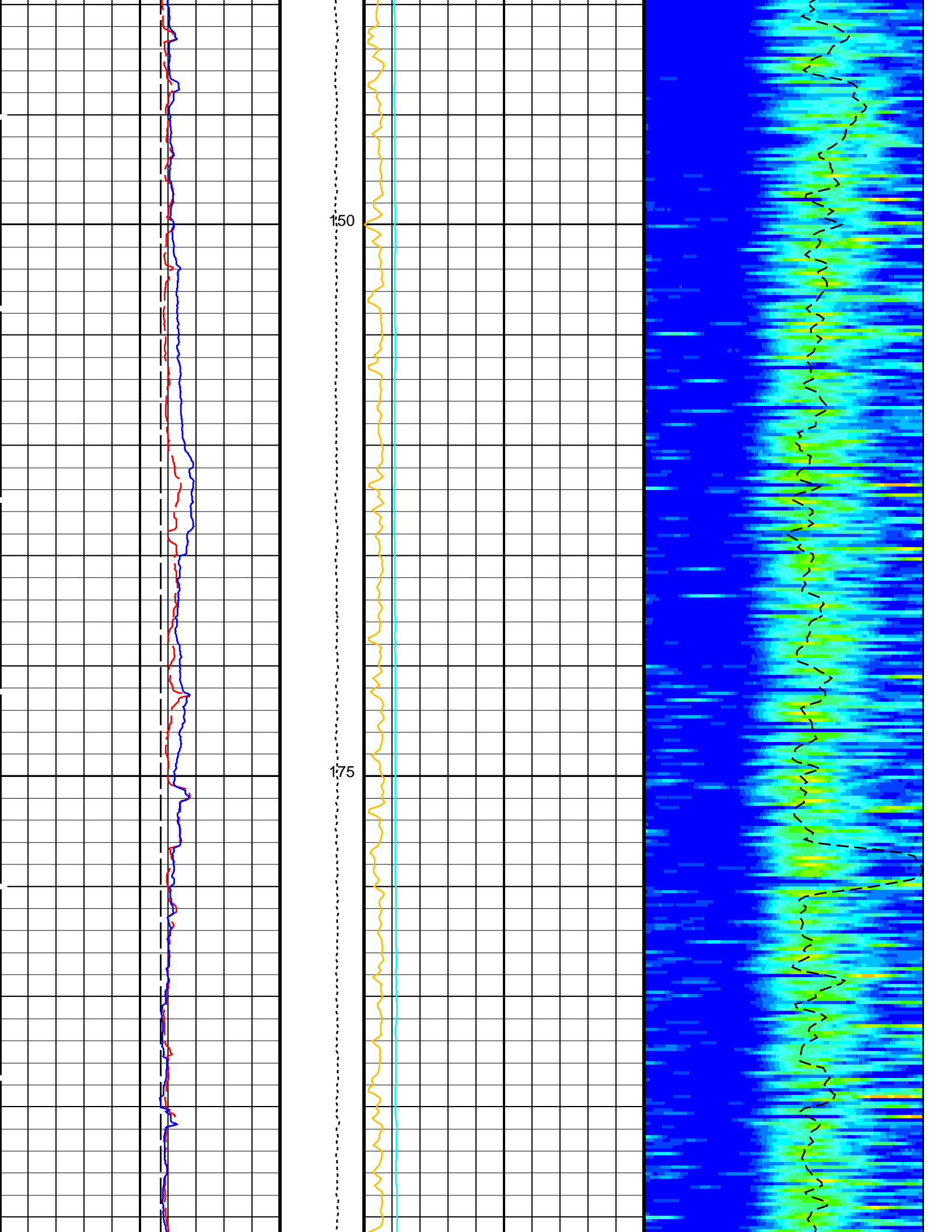
Min Amplitude Max  
Rec.Array U.Dipole Slow Proj. CVDL  
(SPR2)  
(US/F) 1200

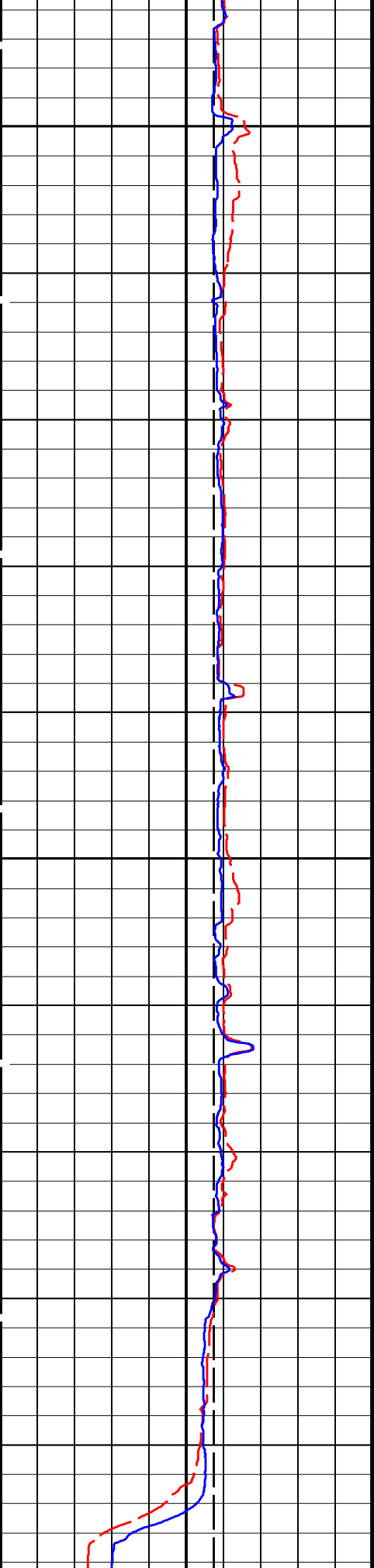
Delta-T Shear / RA - Upper Dipole  
(DT2R)  
(US/F) 1200





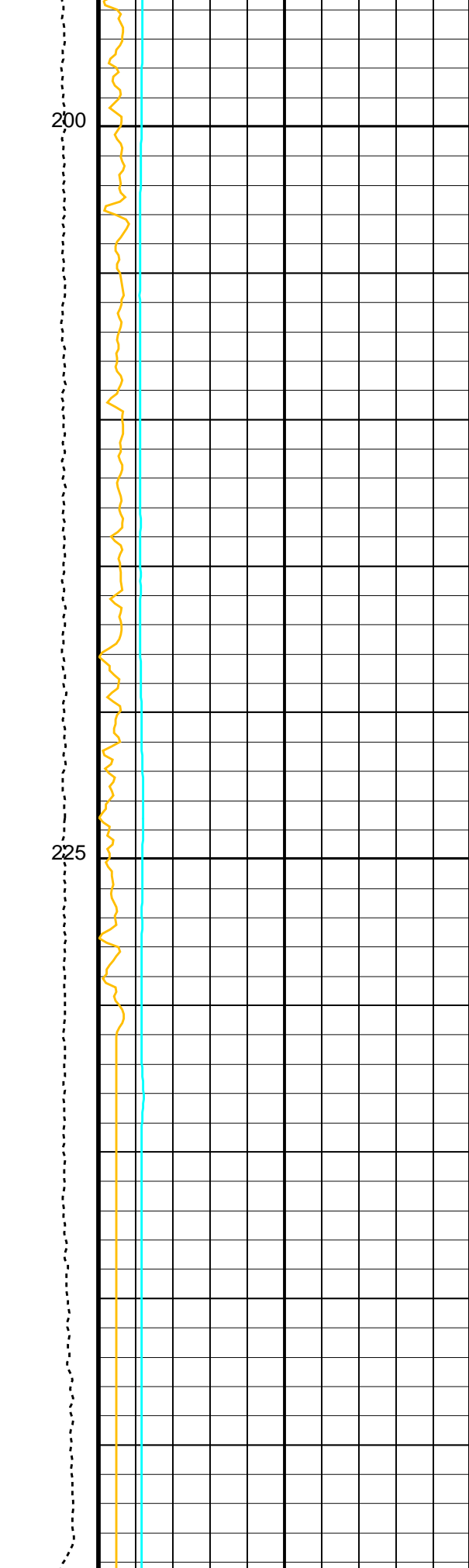






Bit Size (BS)  
(IN)

20

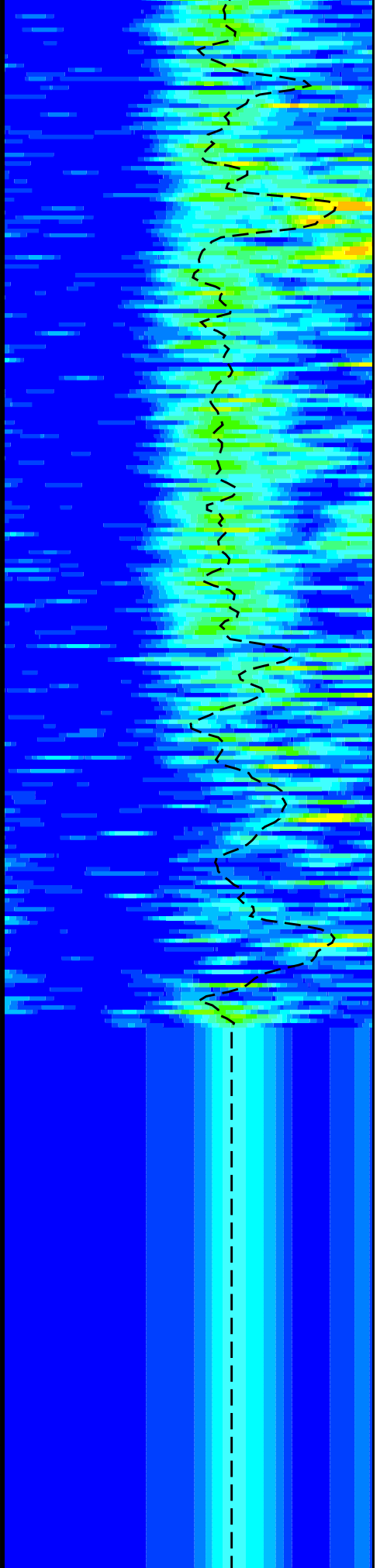


Tension  
(TENS)  
(LBF)

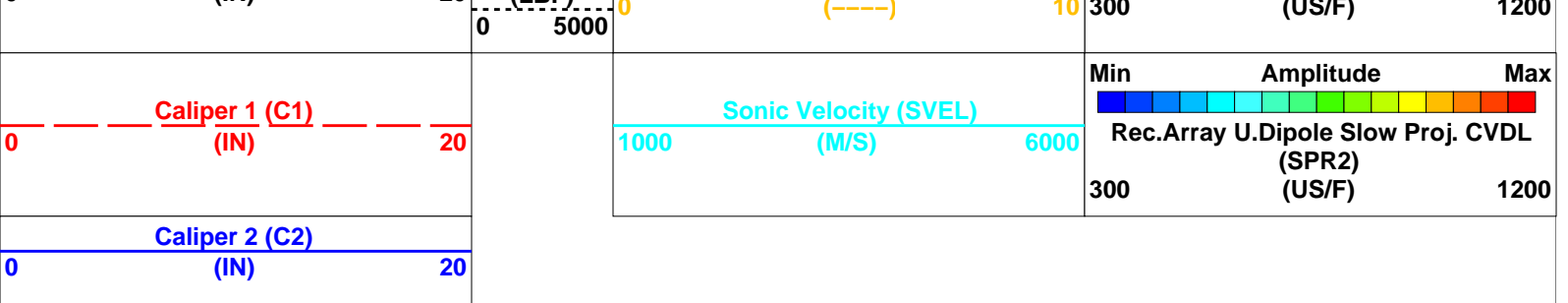
225

200

Peak Coherence / RA - Upper Dipole  
(CHR2)



Delta-T Shear / RA - Upper Dipole  
(DT2R)



PIP SUMMARY

Time Mark Every 60 S

Parameters

DLIS Name	Description	Value
DSST-B: Dipole Shear Imager - B		
DDE2	Digitizing Delay 2	0 US
DDEX	Digitizing Delay X	0 US
DLCS	Label Compressional Source - Dipole Shear	USE
DSHL	Label Slowness Lower Limit - Dipole Shear	300 US/F
DSHU	Label Slowness Upper Limit - Dipole Shear	1200 US/F
DSI2	Digitizer Sample Interval 2	40 US
DSIX	Digitizer Sample Interval X	40 US
DTCS	Compressional Delta-T Source for DTCO Channel	PS_COMP
DWC2	Digitizer Word Count 2	512
DWCX	Digitizer Word Count X	512
NWI2	Number Waveform Items 2	8
NWIX	Number Waveform Items X	0
RX1G	Receiver 1 Geometry	294 IN
RX2G	Receiver 2 Geometry	300 IN
RX3G	Receiver 3 Geometry	306 IN
RX4G	Receiver 4 Geometry	312 IN
RX5G	Receiver 5 Geometry	318 IN
RX6G	Receiver 6 Geometry	324 IN
RX7G	Receiver 7 Geometry	330 IN
RX8G	Receiver 8 Geometry	336 IN
SAM2	DSST Sonic Acquisition Mode 2 - Upper Dipole Mode	ODD
SAMX	DSST Sonic Acquisition Mode X - Both Dipoles or Monopole Mode for Expert	OFF
SAS2	STC Sonic Array Status - Upper Dipole	255
SBO2	STC Search Band Offset - Upper Dipole	3000 US
SBW2	STC Search Bandwidth - Upper Dipole	8000 US
SFC2	STC Formation Character - Upper Dipole	SELECTABLE
SFM2	STC Filter - Upper Dipole	B1-2K
SLL2	STC Slowness Lower Limit - Upper Dipole	300 US/F
SST2	STC Slowness Step - Upper Dipole	4 US/F
SSW2	STC Source Waveform - Upper Dipole	WF_SAM2
SUL2	STC Slowness Upper Limit - Upper Dipole	1200 US/F
SWD2	STC Slowness Width - Upper Dipole	40 US/F
TBF2	STC Time for Baseline Fill - Upper Dipole	0 US
TLL2	STC Time Lower Limit - Upper Dipole	2300 US
TST2	STC Time Step - Upper Dipole	200 US
TUL2	STC Time Upper Limit - Upper Dipole	20200 US
TWD2	STC Time Width - Upper Dipole	2000 US
TWI2	STC Integration Time Window - Upper Dipole	1600 US
TWSX	Transmitter Waveform Select X	0
UTXG	Upper Dipole Transmitter Geometry	162 IN
System and Miscellaneous		
BS	Bit Size	11.438 IN
DO	Depth Offset for Playback	0.0 M
PP	Playback Processing	RECOMPUTE

Format: DSST\_UPPER\_DIPOLE\_VDL\_COLOR Vertical Scale: 1:200 Graphics File Created: 20-Sep-2013 13:30

OP System Version: 19C0-187

MEST-B	19C0-187	DTA-A	19C0-187
DSST-B	19C0-187	HNGC-B	19C0-187
HNGS-BA	19C0-187	EDTC-B	SKK-5169-EDTCB

Input DLIS Files

DEFAULT	FMS_DSI_055PUP	FN:69	PRODUCER	24-Aug-2013 13:33	249.3 M	-11.1 M
---------	----------------	-------	----------	-------------------	---------	---------

Output DLIS Files

DEFAULT	FMS_DSI_NGS_066PUP	FN:6	PRODUCER	20-Sep-2013 13:30
CLIENT	FMS_DSI_NGS_066PUC	FN:7	CUSTOMER	20-Sep-2013 13:30



# Calibrations

## MAXIS Field Log




Calibration and Check Summary							
Measurement	Nominal	Master	Before	After	Change	Limit	Units
Enhanced DTS Cartridge Wellsite Calibration – EDTC Accelerometer Calibration							
Before: 23-Aug-2013 9:25							
EDTC Z-Axis Acceleration	9.810	N/A	9.753	N/A	N/A	N/A	M/S2
Enhanced DTS Cartridge Wellsite Calibration – Detector Calibration							
Before: 23-Aug-2013 9:29							
Gamma Ray (Jig – Bkg)	184.4	N/A	184.4	N/A	N/A	16.77	GAPI
Gamma Ray (Calibrated)	165.0	N/A	165.0	N/A	N/A	15.00	GAPI

Litho-Density Spectroscopy Cartridge – B / Equipment Identification		
Primary Equipment:		
LDSC Cartridge	LDSC – B	326
Auxiliary Equipment:		
LDSC Housing	LDSH – A	303

Hostile Natural Gamma Ray Cartridge – B / Equipment Identification		
Primary Equipment:		
HNGC Cartridge	HNGC – B	300
Auxiliary Equipment:		
HNGC Housing	HNGH – A	115

Enhanced DTS Cartridge / Equipment Identification		
Primary Equipment:		
EDTC Gamma Ray Detector	EDTG – A/B	8305
Enhanced DTS Cartridge	EDTC – B	8317
Auxiliary Equipment:		
EDTC Housing	EDTH – B	8303

Enhanced DTS Cartridge Wellsite Calibration			
EDTC Accelerometer Calibration			
Phase	EDTC Z-Axis Acceleration	M/S2	Value
Before	9.753		
	9.610	9.810	10.01
	(Minimum)	(Nominal)	(Maximum)

Enhanced DTS Cartridge Wellsite Calibration											
Detector Calibration											
Phase	Gamma Ray Background GAPI		Value	Phase	Gamma Ray (Jig - Bkg) GAPI		Value	Phase	Gamma Ray (Calibrated) GAPI		Value
Before			10.48	Before			184.4	Before			165.0
	0 (Minimum)	30.00 (Nominal)	120.0 (Maximum)		167.7 (Minimum)	184.4 (Nominal)	201.2 (Maximum)		150.0 (Minimum)	165.0 (Nominal)	180.0 (Maximum)

Before: 23-Aug-2013 9:29

Company: **Lamont Doherty Earth Observatory**

**Schlumberger**

Well: **Expedition 346, Site U1423C**

Field: **Asian Monsoon**

Rig: **JOIDES Resolution**

Country: **USA**

DSI  
Upper Dipole