



Company: Lamont Doherty Earth Observatory

Well: Expedition 346, Site U1430B

Field: Asian Monsoon

Rig: JOIDES Resolution Country: USA

Rig: JOIDES Resolution Field: Asian Monsoon Location: Latitude: N 37° 54.1595' Well: Expedition 346, Site U1430B Company: Lamont Doherty Earth Observatory	DSI			
	Stoneley			
	Latitude: N 37° 54.1595'		Elev.: K.B. -1082.90 m	
	Longitude: E 131° 32.2499'		G.L. 0.00 m	
LOCATION	Permanent Datum: Sea Floor		Elev.: 0.00 m	
	Log Measured From: Drill Floor		-1082.90 m above Perm. Datum	
	Drilling Measured From: Drill Floor			
Ocean: Pacific	Max. Well Deviation 0 deg		Longitude E 131.537*	Latitude N 37.903*

Logging Date		20-Sep-2013	
Run Number		3	
Depth Driller		275 m	
Schlumberger Depth		271.2 m	
Bottom Log Interval		251.5 m	
Top Log Interval		79.5 m	
Casing Driller Size @ Depth		5.500 in @ 79.5 m	
Casing Schlumberger		79.5 m	
Bit Size		11.438 in	
Type Fluid In Hole		WBM	
MUD	Density	Viscosity	1.26 g/cm3
	Fluid Loss	PH	
	Source Of Sample		N/A
RM @ Measured Temperature		@ @	
RMF @ Measured Temperature		@ @	
RMC @ Measured Temperature		@ @	
Source RMF	RMC	N/A	N/A
RM @ MRT	RMF @ MRT	@ 15	@ 15 @
Maximum Recorded Temperatures		15 degC	
Circulation Stopped	Time	20-Sep-2013	0:30
Logger On Bottom	Time	20-Sep-2013	5:35
Unit Number	Location	625003	Houston
Recorded By		C. Furman	
Witnessed By		J. Lofi	

	Run 1	Run 2	R

Logging Date			
Run Number			
Depth Driller			
Schlumberger Depth			
Bottom Log Interval			
Top Log Interval			
Casing Driller Size @ Depth		@	
Casing Schlumberger			
Bit Size			
Type Fluid In Hole			
MUD	Density	Viscosity	
	Fluid Loss	PH	
	Source Of Sample		
RM @ Measured Temperature		@	
RMF @ Measured Temperature		@	
RMC @ Measured Temperature		@	
Source RMF	RMC		
RM @ MRT	RMF @ MRT	@	@
Maximum Recorded Temperatures			
Circulation Stopped	Time		
Logger On Bottom	Time		
Unit Number	Location		
Recorded By			
Witnessed By			

DISCLAIMER

THE USE OF AND RELIANCE UPON THIS RECORDED-DATA BY THE HEREIN NAMED COMPANY (AND ANY OF ITS AFFILIATES, PARTNERS, REPRESENTATIVES, AGENTS, CONSULTANTS AND EMPLOYEES) IS SUBJECT TO THE TERMS AND CONDITIONS AGREED UPON BETWEEN SCHLUMBERGER AND THE COMPANY, INCLUDING: (a) RESTRICTIONS ON USE OF THE RECORDED-DATA; (b) DISCLAIMERS AND WAIVERS OF WARRANTIES AND REPRESENTATIONS REGARDING COMPANY'S USE OF AND RELIANCE UPON THE RECORDED-DATA; AND (c) CUSTOMER'S FULL AND SOLE RESPONSIBILITY FOR ANY INFERENCE DRAWN OR DECISION MADE IN CONNECTION WITH THE USE OF THIS RECORDED-DATA.

OTHER SERVICES1

- OS1: HNGS
- OS2: HLDS
- OS3: HRLA
- OS4: FMS
- OS5: MSS


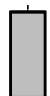
REMARKS: RUN NUMBER 1

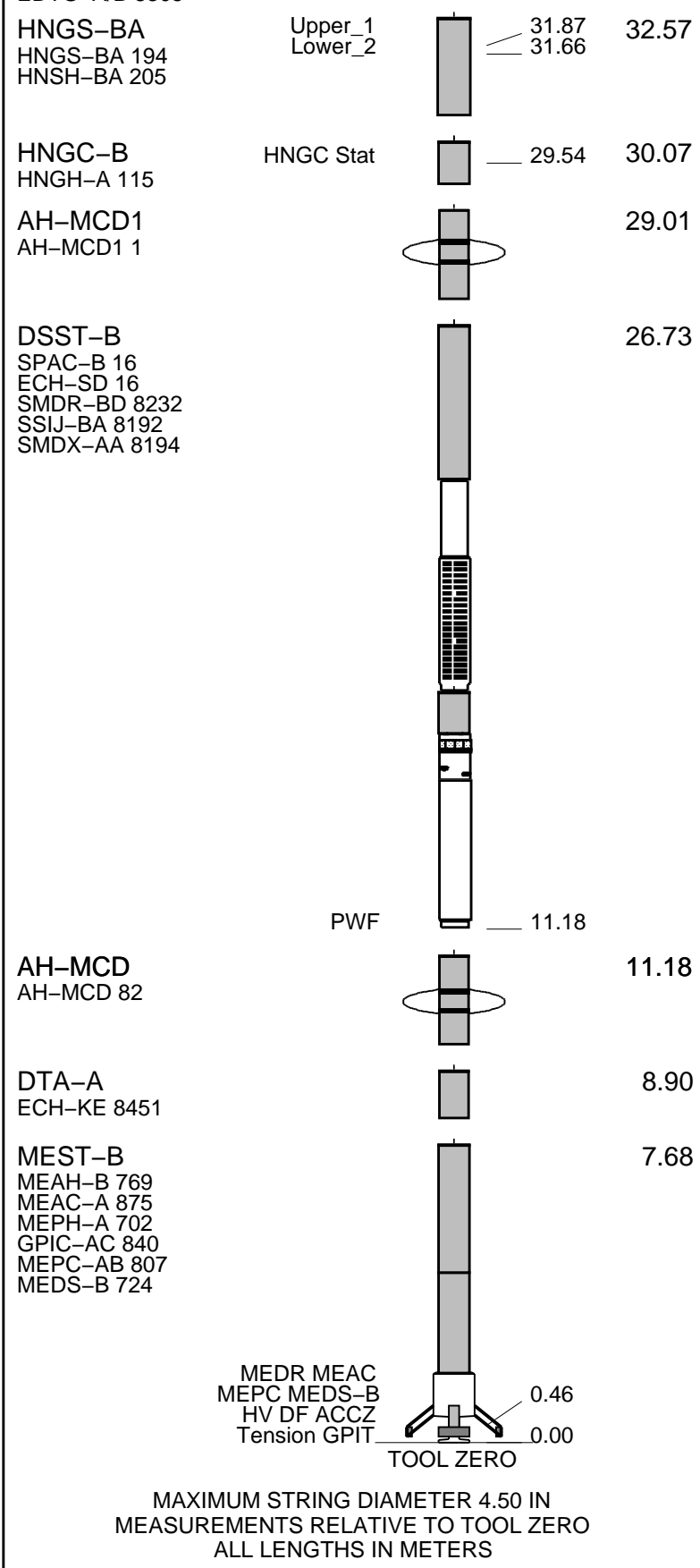
- Hole drilled and cored using APC/XCB coring system.
- LFV Actuator (Go-Devil) run attached to bottom of MSS for LFV locking open / closed.
- Logs recorded from drill floor (1082.9m above permanent datum) then shifted to zero at sea floor.
- Hole drilled with sea water and then displaced with weighted water-based mud having a density of 1.259 g/cc (10.5ppg).
- Barite corrections applied to nuclear logs.
- Caliper closed at 96mbsf to facilitate pipe entry; AHC not used due to very low heave.
- Toolstring centered using two MCD bowspring devices and FMS Caliper.
- DSI run with P&S, Lower Dipole, Upper Dipole, and Stoneley modes all in standard frequency for all passes.

RUN 1			RUN 2		
SERVICE ORDER #: PROGRAM VERSION: FLUID LEVEL:			SERVICE ORDER #: PROGRAM VERSION: FLUID LEVEL:		
19C0-187					
LOGGED INTERVAL	START	STOP	LOGGED INTERVAL	START	STOP

EQUIPMENT DESCRIPTION

RUN 1	RUN 2
<b>SURFACE EQUIPMENT</b>	
GSR-U 616008 WITM (EDTS)-A	

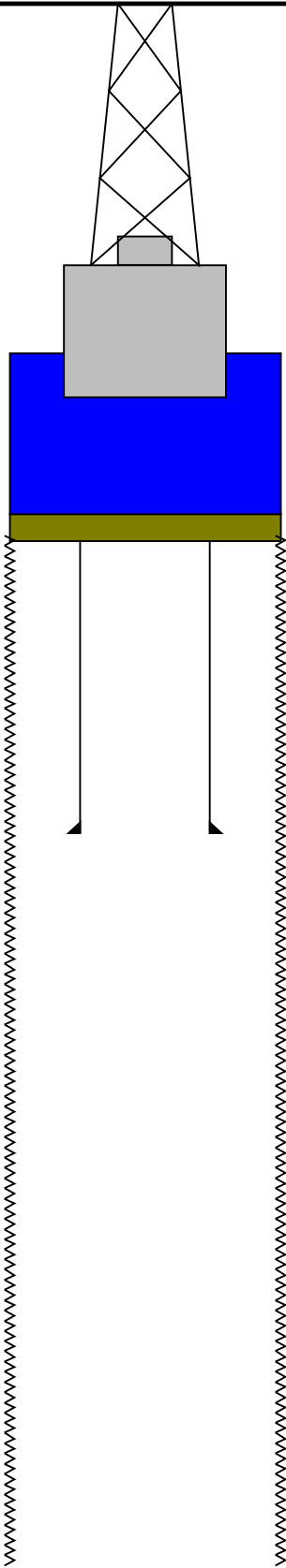
DOWNHOLE EQUIPMENT			
LEH-MT 101	MDSB_EDTC		35.51
LEH-MT 101 101	Mud Tempe		34.55
	CTEM		33.49
EDTC-B	Gamma Ray		34.55
EDTH-B 8303	EFTB DIAG		32.92
EDTC-B 8317	TelStatus		32.57
EDTG-A/B 8305	EDTCB Ele		



Production String	(in) (m)	Well Schematic	(m) (in)	Casing String
-------------------	----------	----------------	----------	---------------

Kelly Bushing Elevation  
Derrick Floor Elevation  
Mean Sea Level

0.0  
0.0  
11.0



1082.9 11.438 4.000  
1162.4 5.500 4.000  
1357.9 11.438

Sea Bed  
Bit  
TD - Driller

**Schlumberger**

**Downlog  
1:200 Scale**

MAXIS Field Log

Company: Lamont Doherty Earth Observatory

Well: Expedition 346, Site U1430B

**Input DLIS Files**

DEFAULT	Flip_FMS_DSI_NGS_044LUP	PRODUCER	21-Sep-2013 12:55	1356.2 M	1024.1 M
---------	-------------------------	----------	-------------------	----------	----------

**Output DLIS Files**

DEFAULT	FMS_DSI_NGS_048PUP	FN:56	PRODUCER	21-Sep-2013 13:06	274.6 M	-21.8 M
CLIENT	FMS_DSI_NGS_048PUC	FN:57	CUSTOMER	21-Sep-2013 13:06	274.6 M	-20.3 M

**OP System Version: 19C0-187**

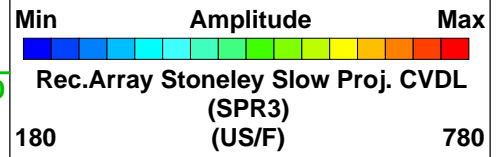
MEST-B	19C0-187	DTA-A	19C0-187
DSST-B	19C0-187	HNGC-B	19C0-187
HNGS-BA	19C0-187	EDTC-B	SKK-5169-EDTCB

PIP SUMMARY

Time Mark Every 60 S

HNGS Spectroscopy Gamma Ray (HSGR)		
0	(GAPI)	100
Caliper 2 (C2)		
0	(IN)	20
Caliper 1 (C1)		
0	(IN)	20

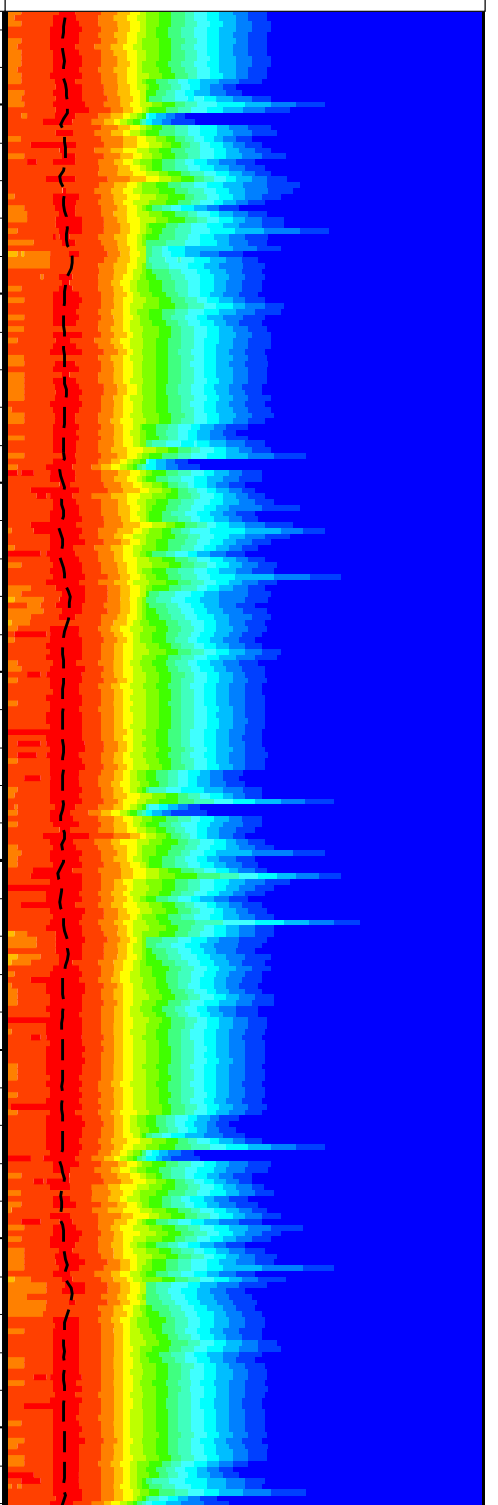
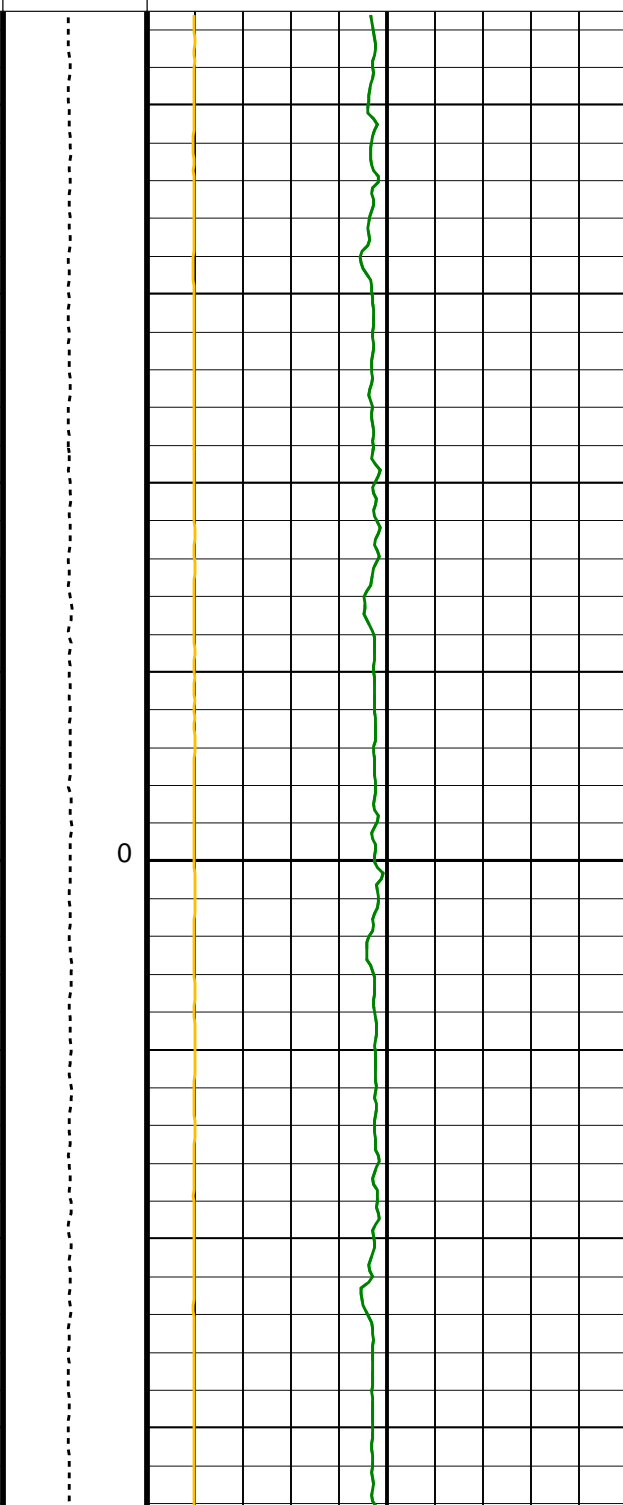
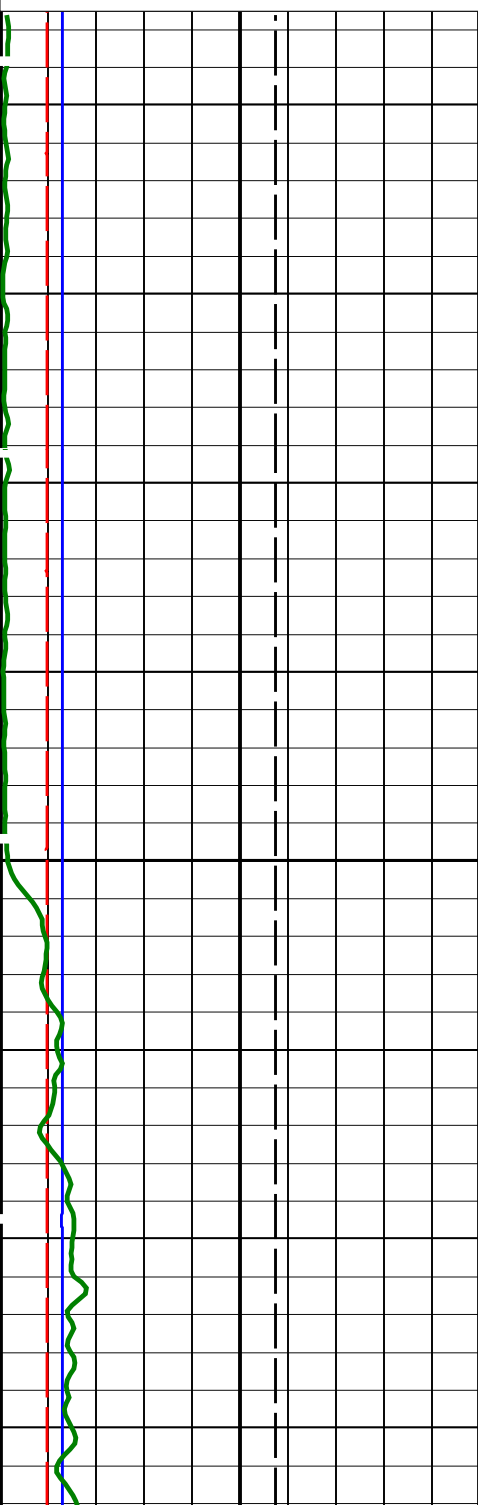
Delta-T Stoneley (DTST)		
440	(US/F)	40
Delta-T Stoneley / RA (DT3R)		
440	(US/F)	40

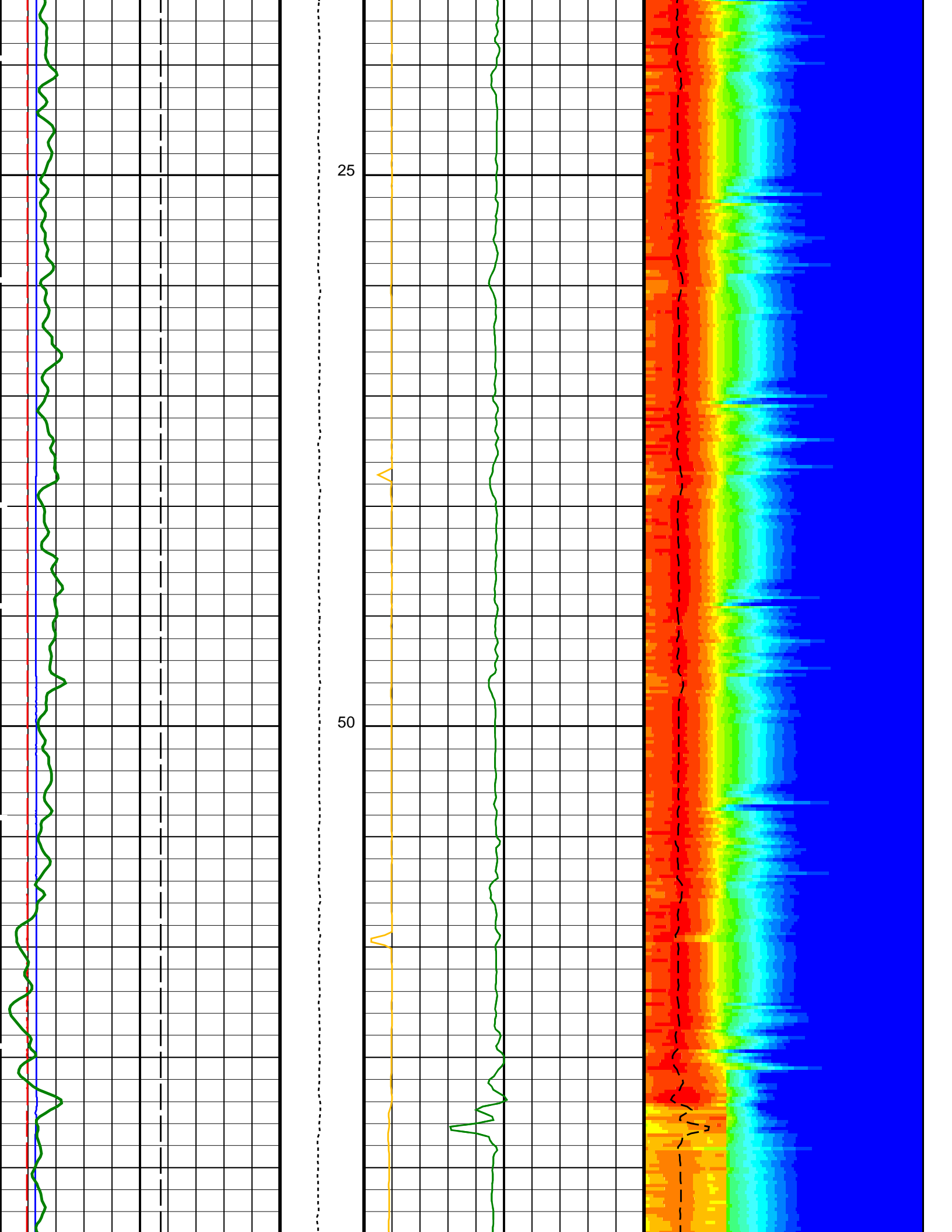


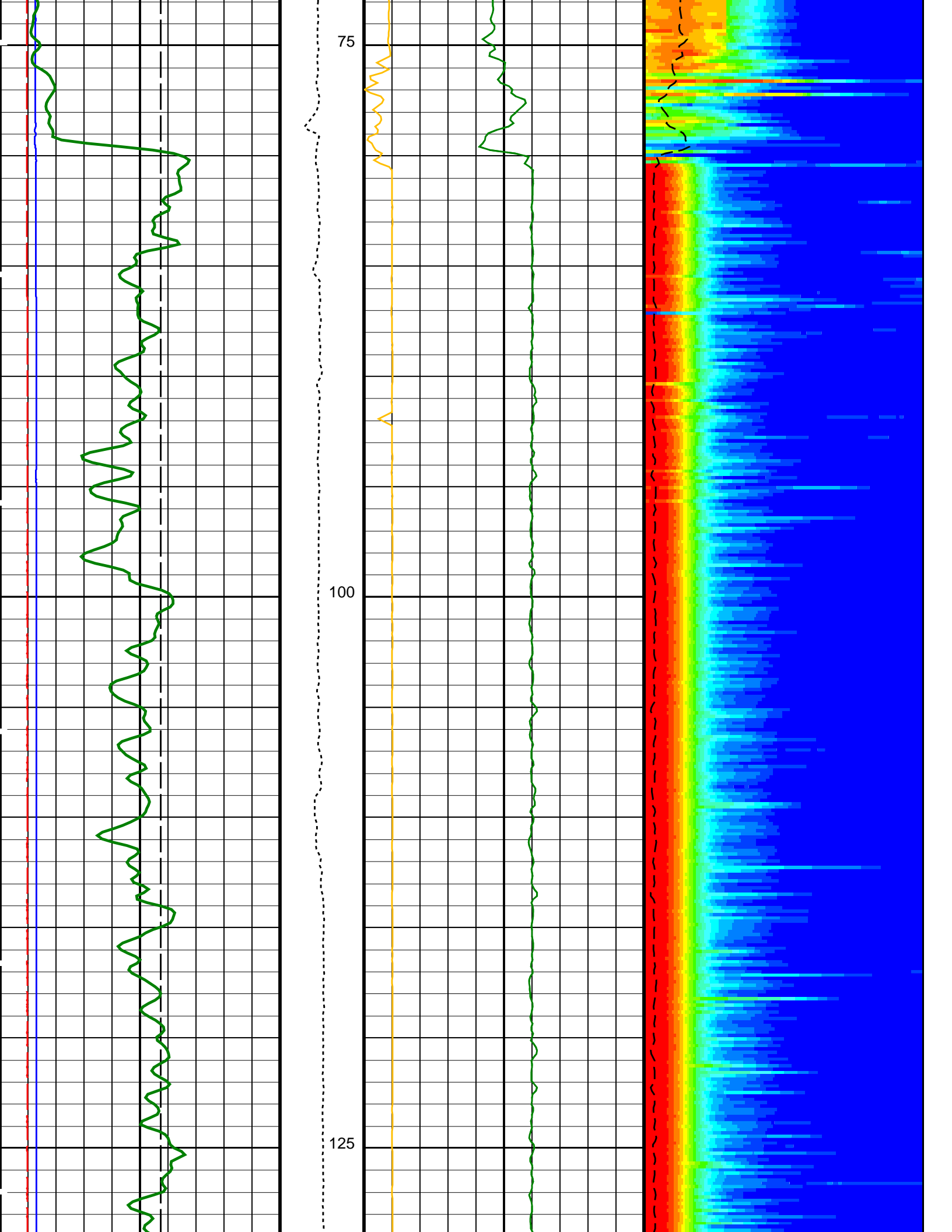
Bit Size (BS)		
0	(IN)	20

Tension (TENS) (LBF)		
0		5000
Peak Coherence / RA - Stoneley (CHR3)		
0	(----)	10

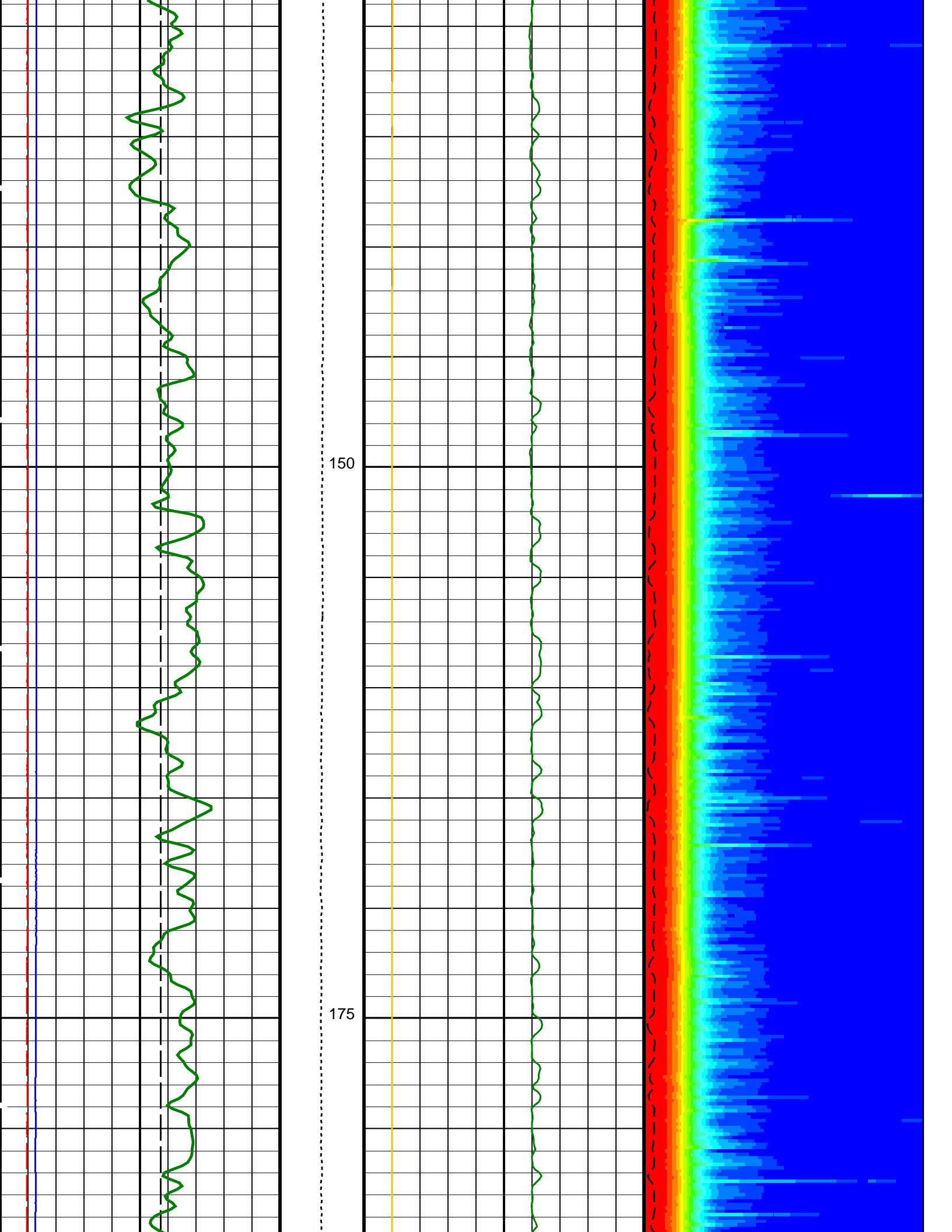
Delta-T Stoneley / RA (DT3R)		
180	(US/F)	780

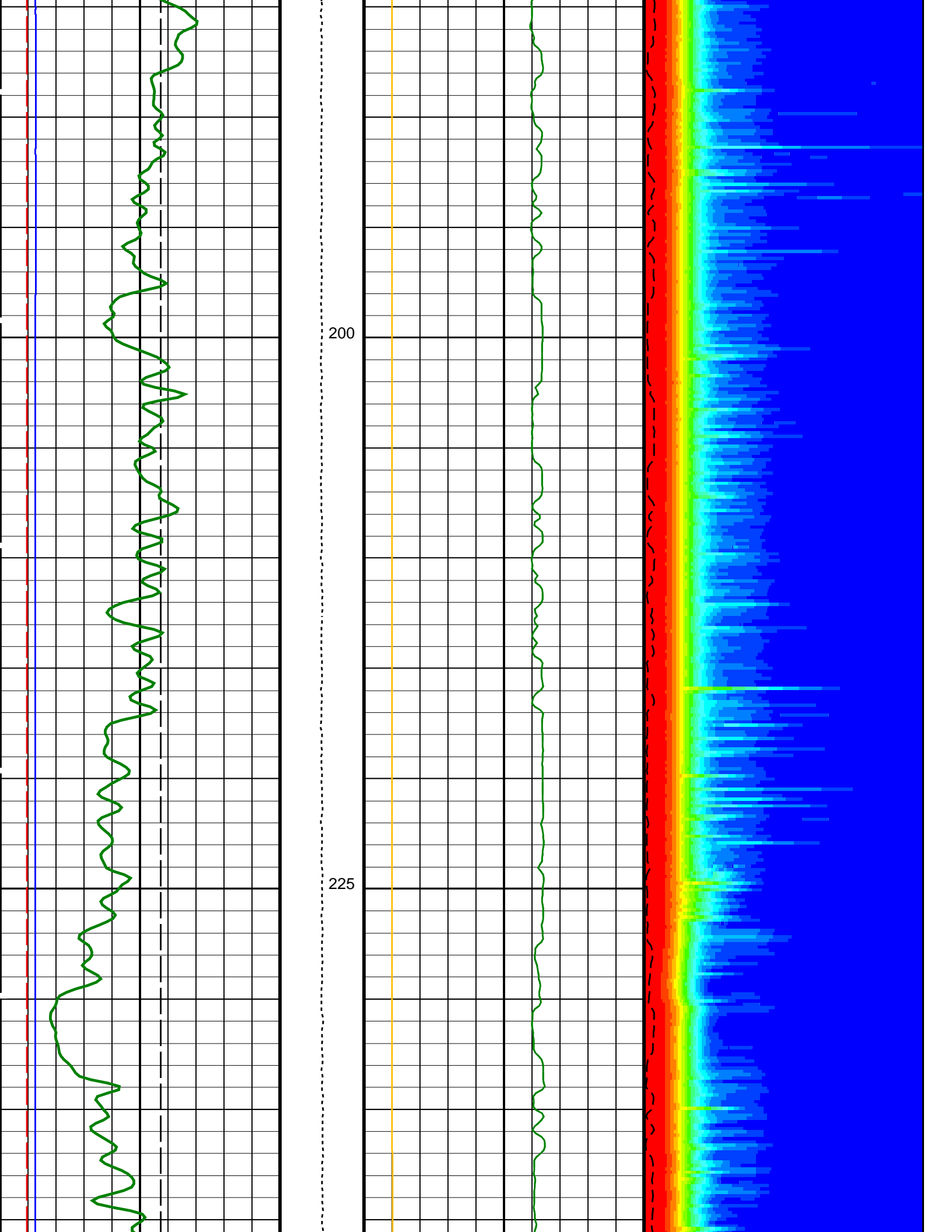


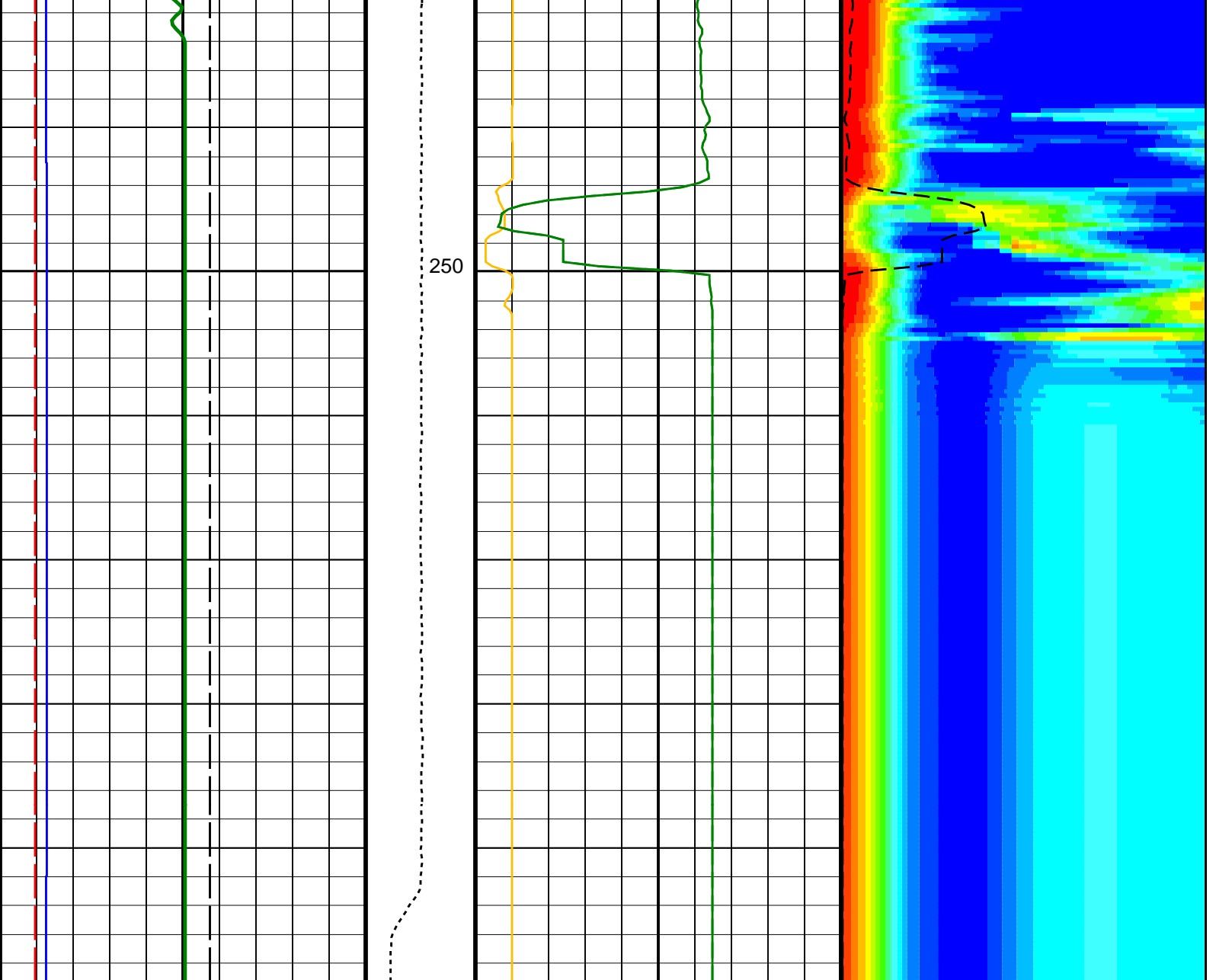












0	Bit Size (BS) (IN)	20	0	Tension (TENS) (LBF)	5000	0	Peak Coherence / RA - Stoneley (CHR3) (----)	10	180	Delta-T Stoneley / RA (DT3R) (US/F)	780
0	Caliper 1 (C1) (IN)	20	440	Delta-T Stoneley / RA (DT3R) (US/F)	40	180	Delta-T Stoneley / RA (DT3R) (US/F)	780	Min	Amplitude	Max
0	Caliper 2 (C2) (IN)	20	440	Delta-T Stoneley (DTST) (US/F)	40	180	Delta-T Stoneley (DTST) (US/F)	780	Rec.Array Stoneley Slow Proj. CVDL (SPR3) (US/F)		
0	HNGS Spectroscopy Gamma Ray (HSGR) (GAPI)	100									

PIP SUMMARY

Time Mark Every 60 S

Parameters

DLIS Name	Description	Value
DSST-B: Dipole Shear Imager - B		
BHS	Borehole Status	OPEN
DDE3	Digitizing Delay 3	0 US
DDEX	Digitizing Delay X	0 US

DSI3	Digitizing Delay 3	40	US
DSIX	Digitizer Sample Interval X	40	US
DTCS	Compressional Delta-T Source for DTCS Channel	PS_COMP	
DWC3	Digitizer Word Count 3	512	
DWCX	Digitizer Word Count X	512	
GCSE	Generalized Caliper Selection	C1	
MTXG	Monopole Transmitter Geometry	186	IN
NWI3	Number Waveform Items 3	8	
NWIX	Number Waveform Items X	0	
RX1G	Receiver 1 Geometry	294	IN
RX2G	Receiver 2 Geometry	300	IN
RX3G	Receiver 3 Geometry	306	IN
RX4G	Receiver 4 Geometry	312	IN
RX5G	Receiver 5 Geometry	318	IN
RX6G	Receiver 6 Geometry	324	IN
RX7G	Receiver 7 Geometry	330	IN
RX8G	Receiver 8 Geometry	336	IN
SAM3	DSST Sonic Acquisition Mode 3 – Monopole Mode for Stoneley	EVEN	
SAMX	DSST Sonic Acquisition Mode X – Both Dipoles or Monopole Mode for Expert	OFF	
SAS3	STC Sonic Array Status – Monopole Stoneley	255	
SBO3	STC Search Band Offset – Monopole Stoneley	2000	US
SBW3	STC Search Bandwidth – Monopole Stoneley	6000	US
SFC3	STC Formation Character – Monopole Stoneley	SELECTABLE	
SFM3	STC Filter – Monopole Stoneley	B.5–1.5K	
SLL3	STC Slowness Lower Limit – Monopole Stoneley	180	US/F
SST3	STC Slowness Step – Monopole Stoneley	4	US/F
SSW3	STC Source Waveform – Monopole Stoneley	WF_SAM3	
STLL	Label Slowness Lower Limit – Monopole Stoneley	180	US/F
STUL	Label Slowness Upper Limit – Monopole Stoneley	780	US/F
SUL3	STC Slowness Upper Limit – Monopole Stoneley	780	US/F
SWD3	STC Slowness Width – Monopole Stoneley	40	US/F
TBF3	STC Time for Baseline Fill – Monopole Stoneley	0	US
TLL3	STC Time Lower Limit – Monopole Stoneley	620	US
TST3	STC Time Step – Monopole Stoneley	200	US
TUL3	STC Time Upper Limit – Monopole Stoneley	12020	US
TWD3	STC Time Width – Monopole Stoneley	2000	US
TWI3	STC Integration Time Window – Monopole Stoneley	1600	US
TWSX	Transmitter Waveform Select X	0	
HNGB–BA: Hostile Natural Gamma Ray Sonde			
BAR1	HNGB Detector 1 Barite Constant	1	
BAR2	HNGB Detector 2 Barite Constant	1	
BHK	HNGB Borehole Potassium Correction Concentration	0	
BHS	Borehole Status	OPEN	
CSD1	Inner Casing Outer Diameter	0	IN
CSD2	Outer Casing Outer Diameter	0	IN
CSW1	Inner Casing Weight	0	LB/F
CSW2	Outer Casing Weight	0	LB/F
DBCC	HNGB Barite Constant Correction Flag	NONE	
GCSE	Generalized Caliper Selection	C1	
H1P	HNGB Detector 1 Allow/Disallow In Processing	ALLOW	
H2P	HNGB Detector 2 Allow/Disallow In Processing	ALLOW	
HABK	HNGB Borehole Potassium Running Average	-0.0214685	
HALF	HNGB Alpha Filter Length	60	IN
HCRB	HNGB Apply Borehole Potassium Correction	NONE	
HMWM	Mud Weighting Material	BARI	
HNPE	HNGB Processing Enable	YES	
S1BI	HNGB Detector 1 Calibration Bismuth Count Rate	-999.25	CPS
S2BI	HNGB Detector 2 Calibration Bismuth Count Rate	-999.25	CPS
SGRC	HNGB Standard Gamma-Ray Correction Flag	YES	
TPOS	Tool Position	ECCE	
VBA1	HNGB Detector 1 Variable Barite Factor Running Average	0.973109	
VBA2	HNGB Detector 2 Variable Barite Factor Running Average	0.963734	
EDTC–B: Enhanced DTS Cartridge			
BHS	Borehole Status	OPEN	
GCSE	Generalized Caliper Selection	C1	
System and Miscellaneous			
BS	Bit Size	11.438	IN
DFD	Drilling Fluid Density	1.26	G/C3
DO	Depth Offset for Playback	-1081.6	M
PP	Playback Processing	NORMAL	

Format: DSST\_STONELEY\_VDL\_COLOR Vertical Scale: 1:200 Graphics File Created: 21-Sep-2013 13:06

## OP System Version: 19C0–187

MEST–B	19C0–187	DTA–A	19C0–187
DSST–B	19C0–187	HNGC–B	19C0–187
HNGB–BA	19C0–187	EDTC–B	SKK–5169–EDTCB

Input DLIS Files

### Output DLIS Files

DEFAULT FMS\_DSI\_NGS\_048PUP FN:56 PRODUCER 21-Sep-2013 13:06  
 CLIENT FMS\_DSI\_NGS\_048PUC FN:57 CUSTOMER 21-Sep-2013 13:06



**First Pass**  
**1:200 Scale**

MAXIS Field Log

Company: Lamont Doherty Earth Observatory Well: Expedition 346, Site U1430B

### Input DLIS Files

DEFAULT FMS\_DSI\_NGS\_021LUP FN:20 PRODUCER 20-Sep-2013 03:35 1353.3 M 1125.2 M

### Output DLIS Files

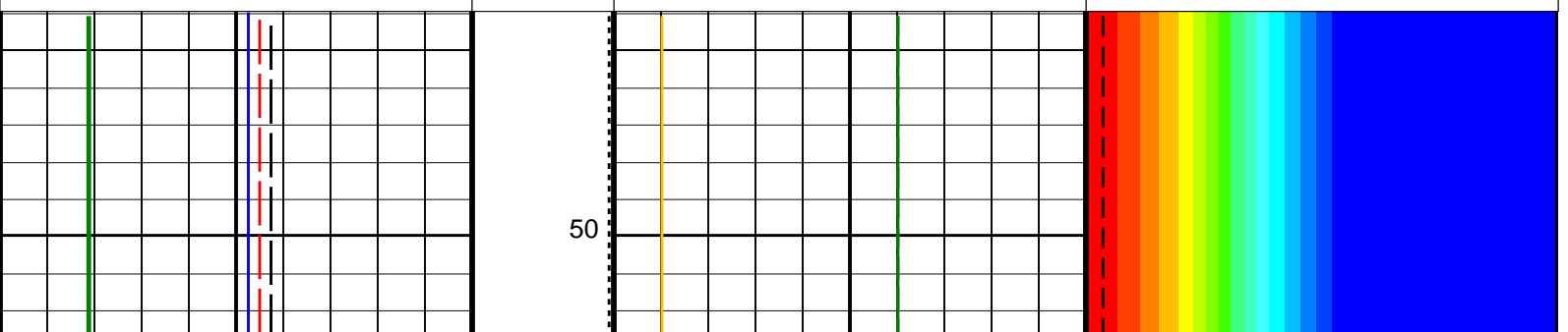
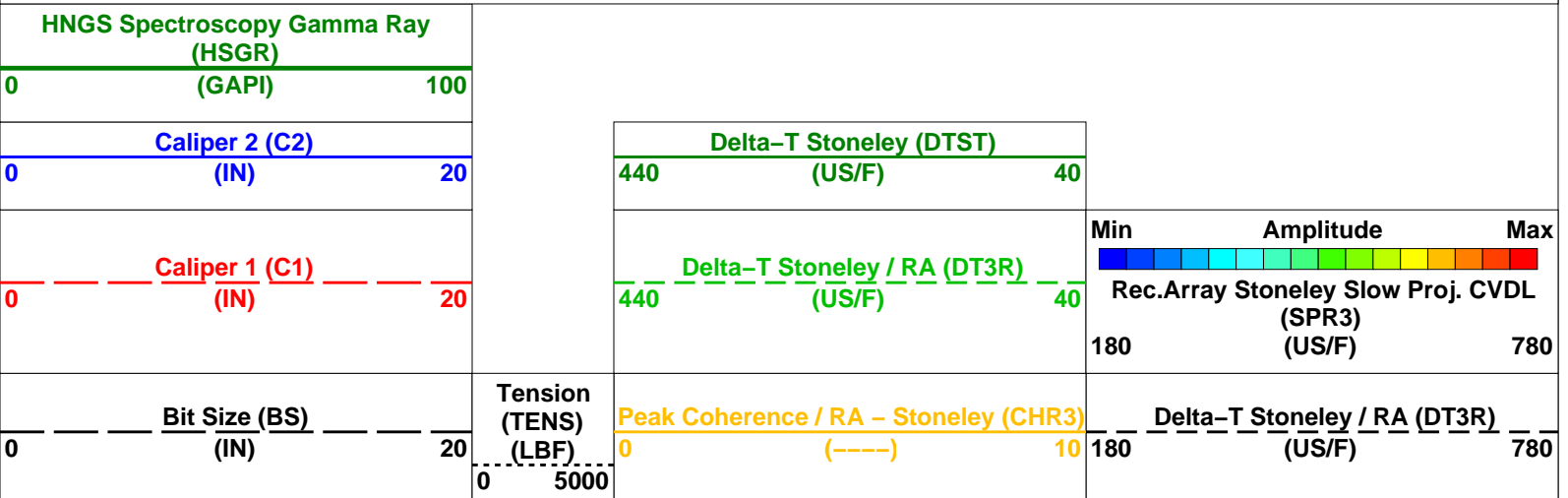
DEFAULT FMS\_DSI\_NGS\_047PUP FN:54 PRODUCER 21-Sep-2013 13:03 272.0 M 43.9 M  
 CLIENT FMS\_DSI\_NGS\_047PUC FN:55 CUSTOMER 21-Sep-2013 13:03 272.0 M 43.9 M

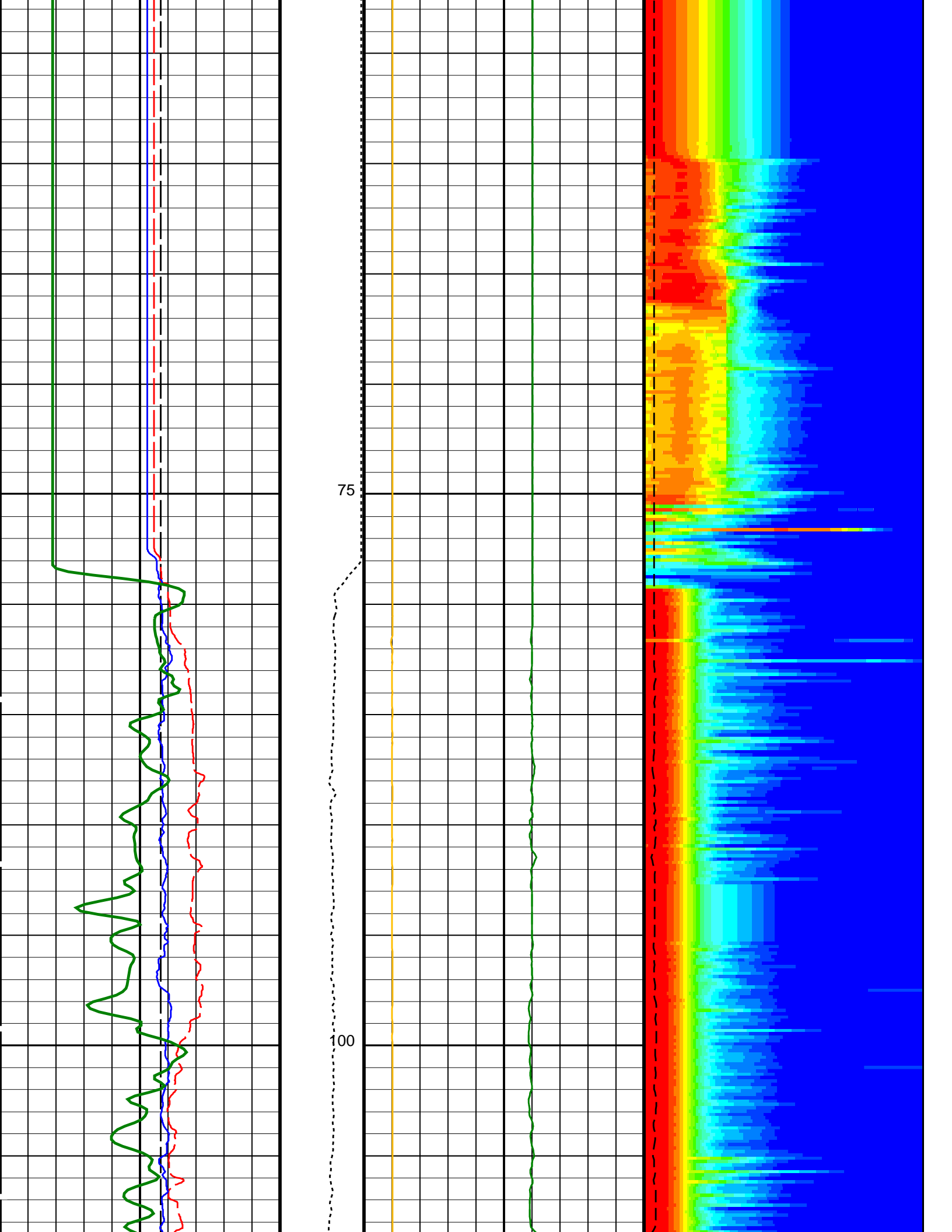
### OP System Version: 19C0-187

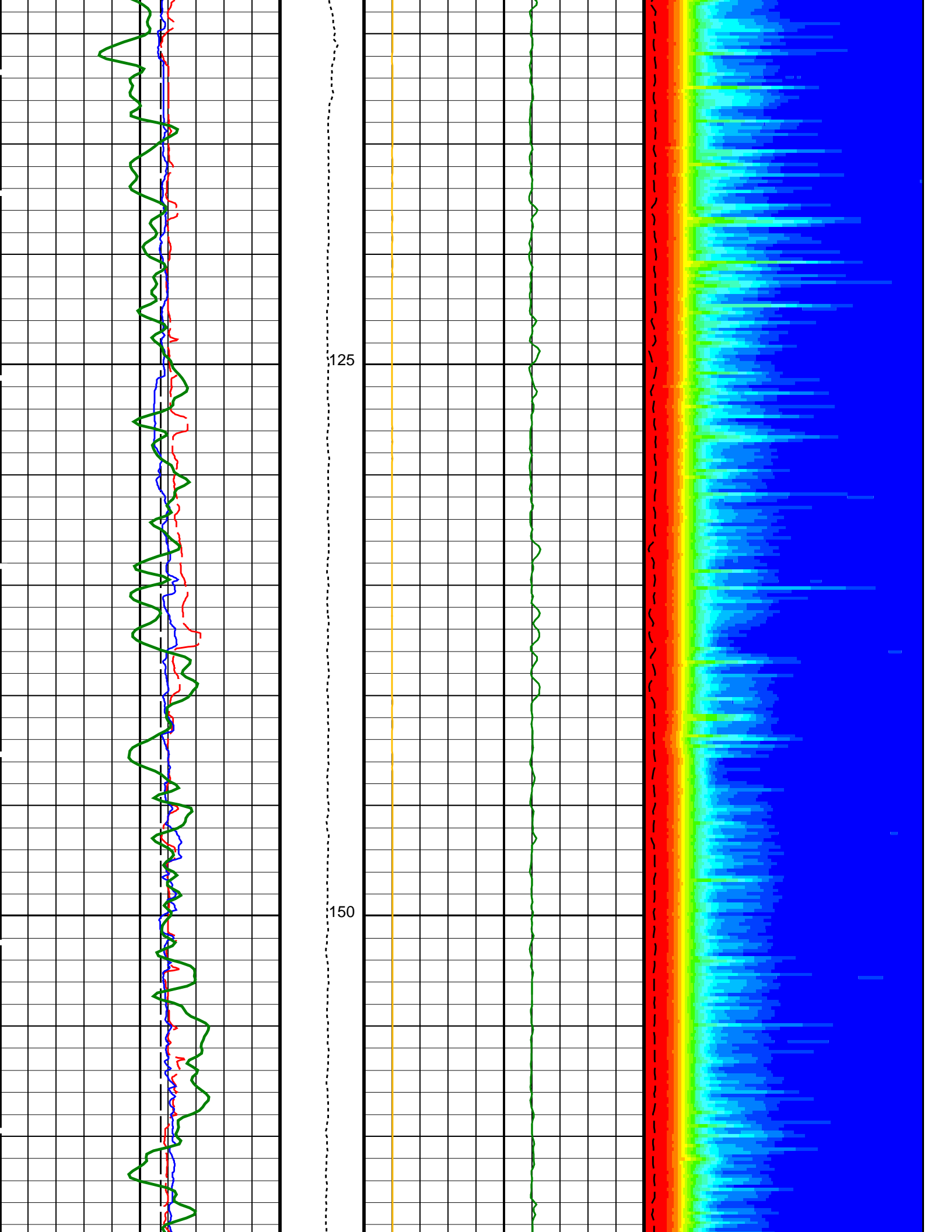
MEST-B 19C0-187 DTA-A 19C0-187  
 DSST-B 19C0-187 HNGC-B 19C0-187  
 HNGS-BA 19C0-187 EDTC-B SKK-5169-EDTCB

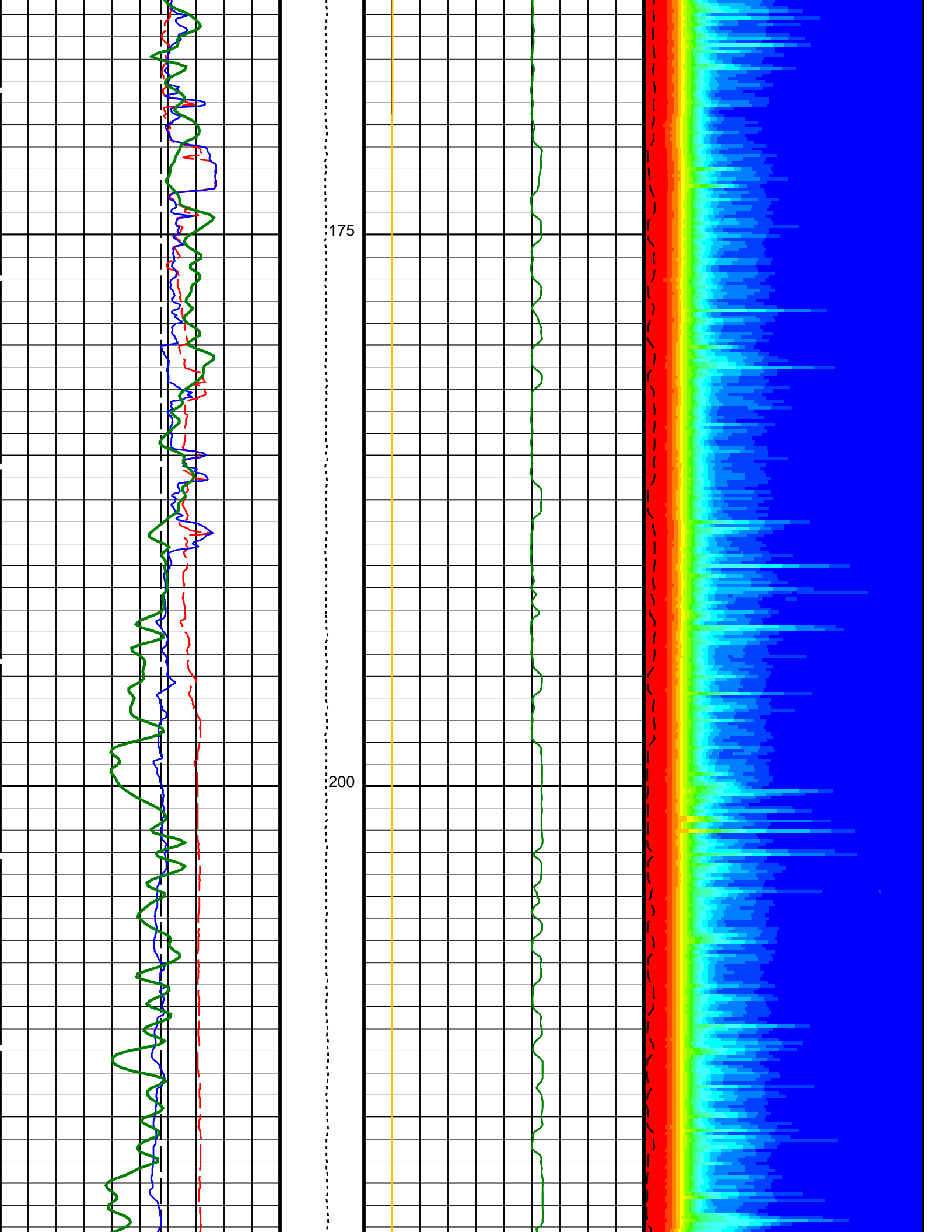
### PIP SUMMARY

Time Mark Every 60 S

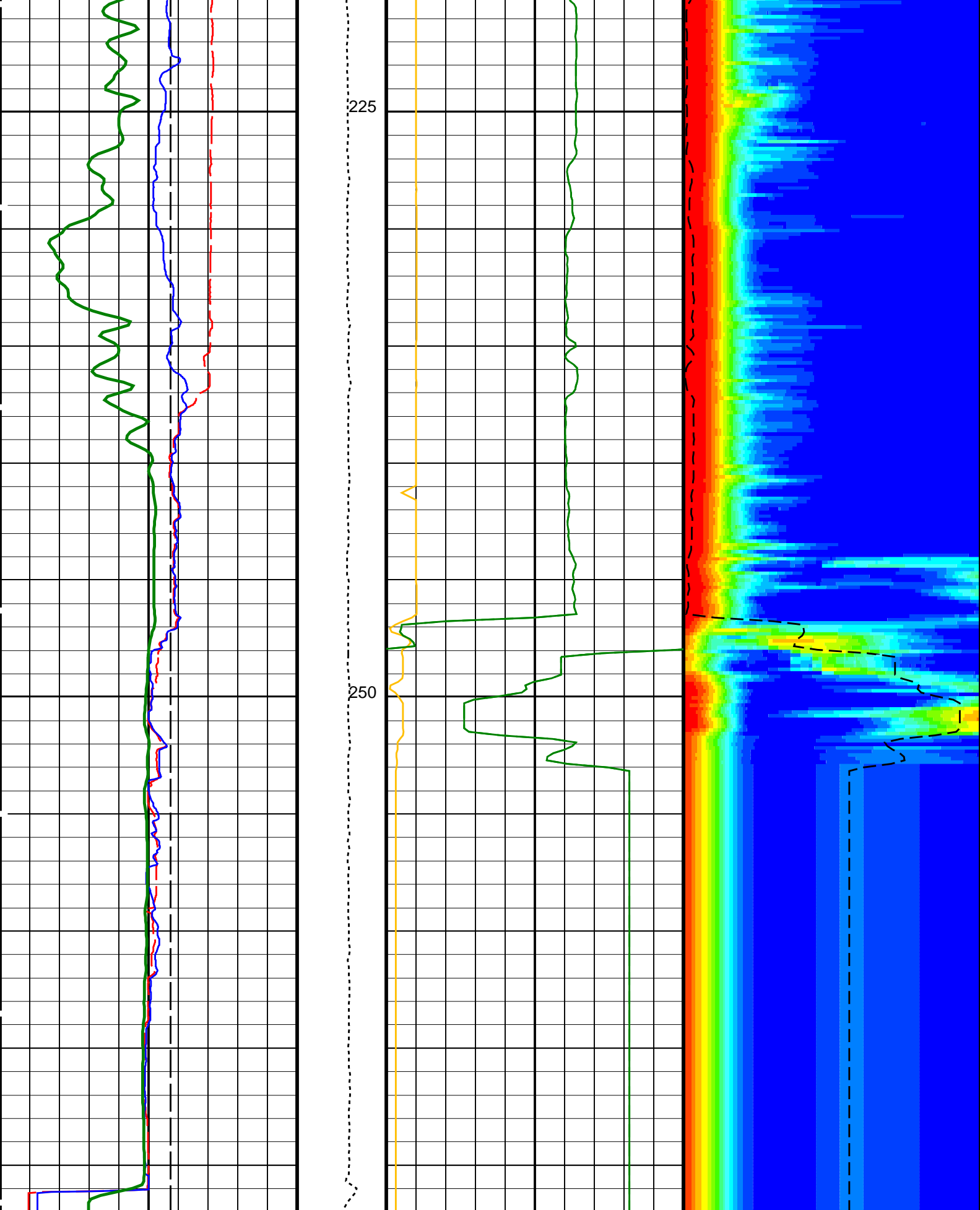












Bit Size (BS) (IN) 0 20  
 Tension (TENS) (LBF) 0 5000  
 Peak Coherence / RA - Stoneley (CHR3) (-----) 0 10  
 Delta-T Stoneley / RA (DT3R) (US/F) 180 780

Caliper 1 (C1) (IN)	Delta-T Stoneley / RA (DT3R) (US/F)	Amplitude Rec.Array Stoneley Slow Proj. CVDL (SPR3) (US/F)
0 20	440 40	180 780
Caliper 2 (C2) (IN)	Delta-T Stoneley (DTST) (US/F)	
0 20	440 40	
HNGS Spectroscopy Gamma Ray (HSGR) (GAPI)		
0 100		

PIP SUMMARY

Time Mark Every 60 S

Parameters

DLIS Name	Description	Value
DSST-B: Dipole Shear Imager - B		
BHS	Borehole Status	OPEN
DDE3	Digitizing Delay 3	0 US
DDEX	Digitizing Delay X	0 US
DSI3	Digitizer Sample Interval 3	40 US
DSIX	Digitizer Sample Interval X	40 US
DTCS	Compressional Delta-T Source for DTCO Channel	PS_COMP
DWC3	Digitizer Word Count 3	512
DWCX	Digitizer Word Count X	512
GCSE	Generalized Caliper Selection	C1
MTXG	Monopole Transmitter Geometry	186 IN
NWI3	Number Waveform Items 3	8
NWIX	Number Waveform Items X	0
RX1G	Receiver 1 Geometry	294 IN
RX2G	Receiver 2 Geometry	300 IN
RX3G	Receiver 3 Geometry	306 IN
RX4G	Receiver 4 Geometry	312 IN
RX5G	Receiver 5 Geometry	318 IN
RX6G	Receiver 6 Geometry	324 IN
RX7G	Receiver 7 Geometry	330 IN
RX8G	Receiver 8 Geometry	336 IN
SAM3	DSST Sonic Acquisition Mode 3 - Monopole Mode for Stoneley	EVEN
SAMX	DSST Sonic Acquisition Mode X - Both Dipoles or Monopole Mode for Expert	OFF
SAS3	STC Sonic Array Status - Monopole Stoneley	255
SBO3	STC Search Band Offset - Monopole Stoneley	2000 US
SBW3	STC Search Bandwidth - Monopole Stoneley	6000 US
SFC3	STC Formation Character - Monopole Stoneley	SELECTABLE
SFM3	STC Filter - Monopole Stoneley	B.5-1.5K
SLL3	STC Slowness Lower Limit - Monopole Stoneley	180 US/F
SST3	STC Slowness Step - Monopole Stoneley	4 US/F
SSW3	STC Source Waveform - Monopole Stoneley	WF_SAM3
STLL	Label Slowness Lower Limit - Monopole Stoneley	180 US/F
STUL	Label Slowness Upper Limit - Monopole Stoneley	780 US/F
SUL3	STC Slowness Upper Limit - Monopole Stoneley	780 US/F
SWD3	STC Slowness Width - Monopole Stoneley	40 US/F
TBF3	STC Time for Baseline Fill - Monopole Stoneley	0 US
TLL3	STC Time Lower Limit - Monopole Stoneley	620 US
TST3	STC Time Step - Monopole Stoneley	200 US
TUL3	STC Time Upper Limit - Monopole Stoneley	12020 US
TWD3	STC Time Width - Monopole Stoneley	2000 US
TWI3	STC Integration Time Window - Monopole Stoneley	1600 US
TWSX	Transmitter Waveform Select X	0
HNGS-BA: Hostile Natural Gamma Ray Sonde		
BAR1	HNGS Detector 1 Barite Constant	1
BAR2	HNGS Detector 2 Barite Constant	1
BHK	HNGS Borehole Potassium Correction Concentration	0
BHS	Borehole Status	OPEN
CSD1	Inner Casing Outer Diameter	0 IN
CSD2	Outer Casing Outer Diameter	0 IN
CSW1	Inner Casing Weight	0 LB/F
CSW2	Outer Casing Weight	0 LB/F
DBCC	HNGS Barite Constant Correction Flag	NONE
GCSE	Generalized Caliper Selection	C1
H1P	HNGS Detector 1 Allow/Disallow In Processing	ALLOW
H2P	HNGS Detector 2 Allow/Disallow In Processing	ALLOW
HABK	HNGS Borehole Potassium Running Average	-0.0214685
HALF	HNGS Alpha Filter Length	60 IN
HCRB	HNGS Apply Borehole Potassium Correction	NONE
HMWM	Mud Weighting Material	BARI
HNPE	HNGS Processing Enable	YES
H1P	HNGS Detector 1 Calibration Bias Count Rate	000.25

STBI	HNGS Detector 1 Calibration Bismuth Count Rate	-999.25	CPS
S2BI	HNGS Detector 2 Calibration Bismuth Count Rate	-999.25	CPS
SGRC	HNGS Standard Gamma-Ray Correction Flag	YES	
TPOS	Tool Position	ECCE	
VBA1	HNGS Detector 1 Variable Barite Factor Running Average	0.973109	
VBA2	HNGS Detector 2 Variable Barite Factor Running Average	0.963734	
EDTC-B: Enhanced DTS Cartridge			
BHS	Borehole Status	OPEN	
GCSE	Generalized Caliper Selection	C1	
System and Miscellaneous			
BS	Bit Size	11.438	IN
DFD	Drilling Fluid Density	1.26	G/C3
DO	Depth Offset for Playback	-1081.3	M
PP	Playback Processing	NORMAL	

Format: DSST\_STONELEY\_VDL\_COLOR    Vertical Scale: 1:200    Graphics File Created: 21-Sep-2013 13:03

### OP System Version: 19C0-187

MEST-B	19C0-187	DTA-A	19C0-187
DSST-B	19C0-187	HNGC-B	19C0-187
HNGS-BA	19C0-187	EDTC-B	SKK-5169-EDTCB

#### Input DLIS Files

DEFAULT	FMS_DSI_NGS_021LUP	FN:20	PRODUCER	20-Sep-2013 03:35	1353.3 M	1125.2 M
---------	--------------------	-------	----------	-------------------	----------	----------

#### Output DLIS Files

DEFAULT	FMS_DSI_NGS_047PUP	FN:54	PRODUCER	21-Sep-2013 13:03		
CLIENT	FMS_DSI_NGS_047PUC	FN:55	CUSTOMER	21-Sep-2013 13:03		



**Second Pass**  
**1:200 Scale**

MAXIS Field Log

Company: Lamont Doherty Earth Observatory    Well: Expedition 346, Site U1430B

#### Input DLIS Files

DEFAULT	FMS_DSI_NGS_022LUP	FN:21	PRODUCER	20-Sep-2013 04:13	1353.3 M	1038.6 M
---------	--------------------	-------	----------	-------------------	----------	----------

#### Output DLIS Files

DEFAULT	FMS_DSI_NGS_046PUP	FN:52	PRODUCER	21-Sep-2013 12:59	272.0 M	-10.1 M
CLIENT	FMS_DSI_NGS_046PUC	FN:53	CUSTOMER	21-Sep-2013 12:59	272.0 M	-10.1 M

### OP System Version: 19C0-187

MEST-B	19C0-187	DTA-A	19C0-187
DSST-B	19C0-187	HNGC-B	19C0-187
HNGS-BA	19C0-187	EDTC-B	SKK-5169-EDTCB

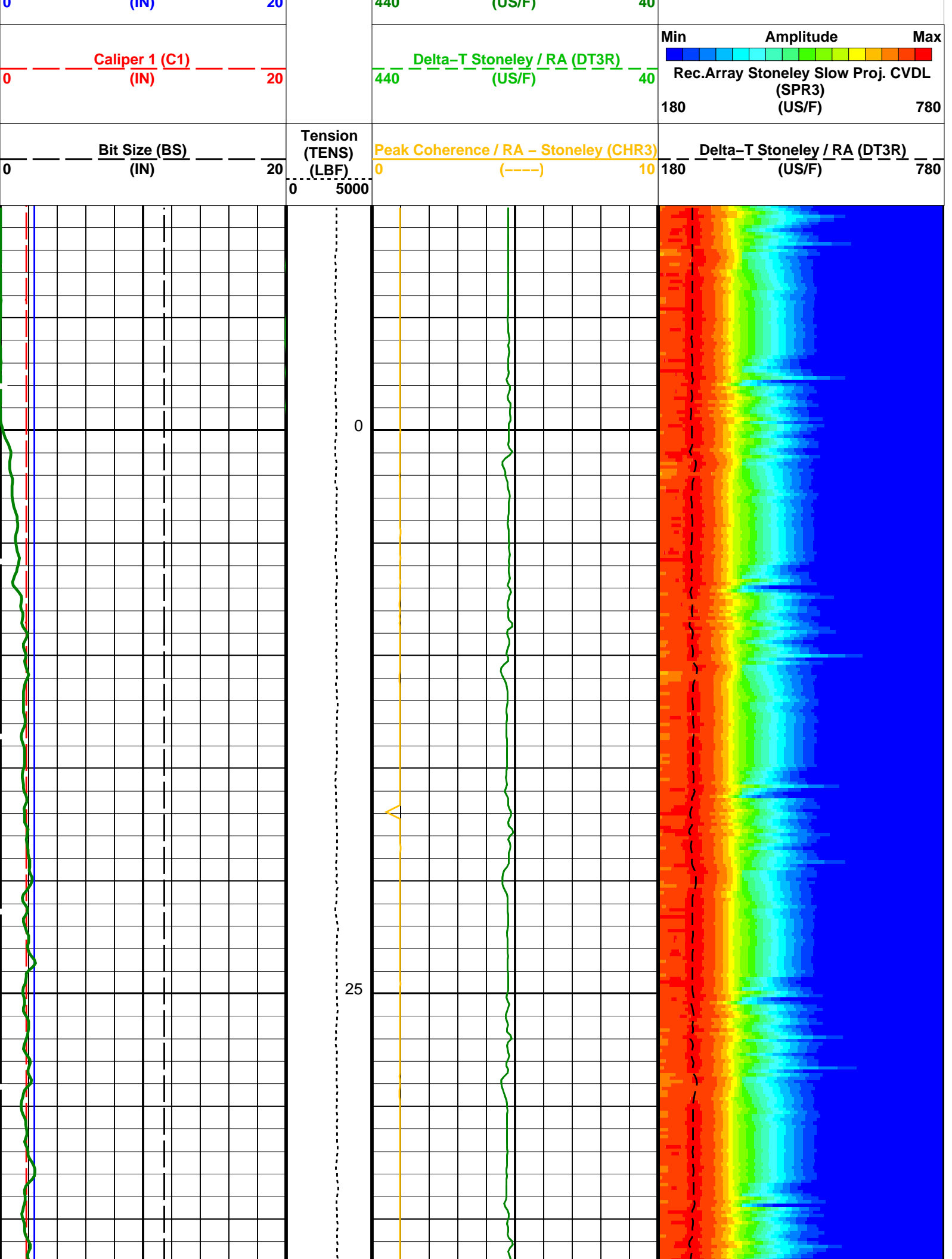
#### PIP SUMMARY

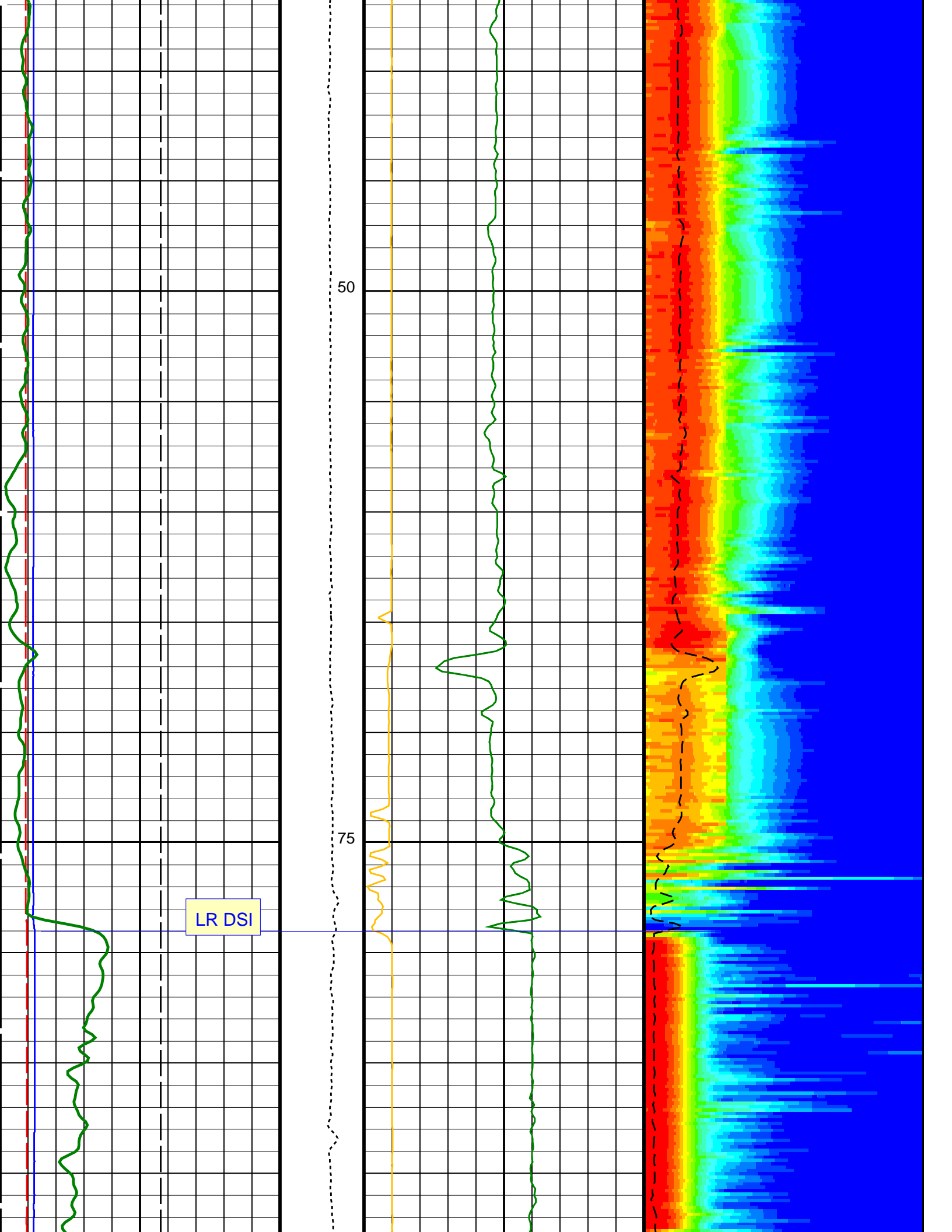
Time Mark Every 60 S

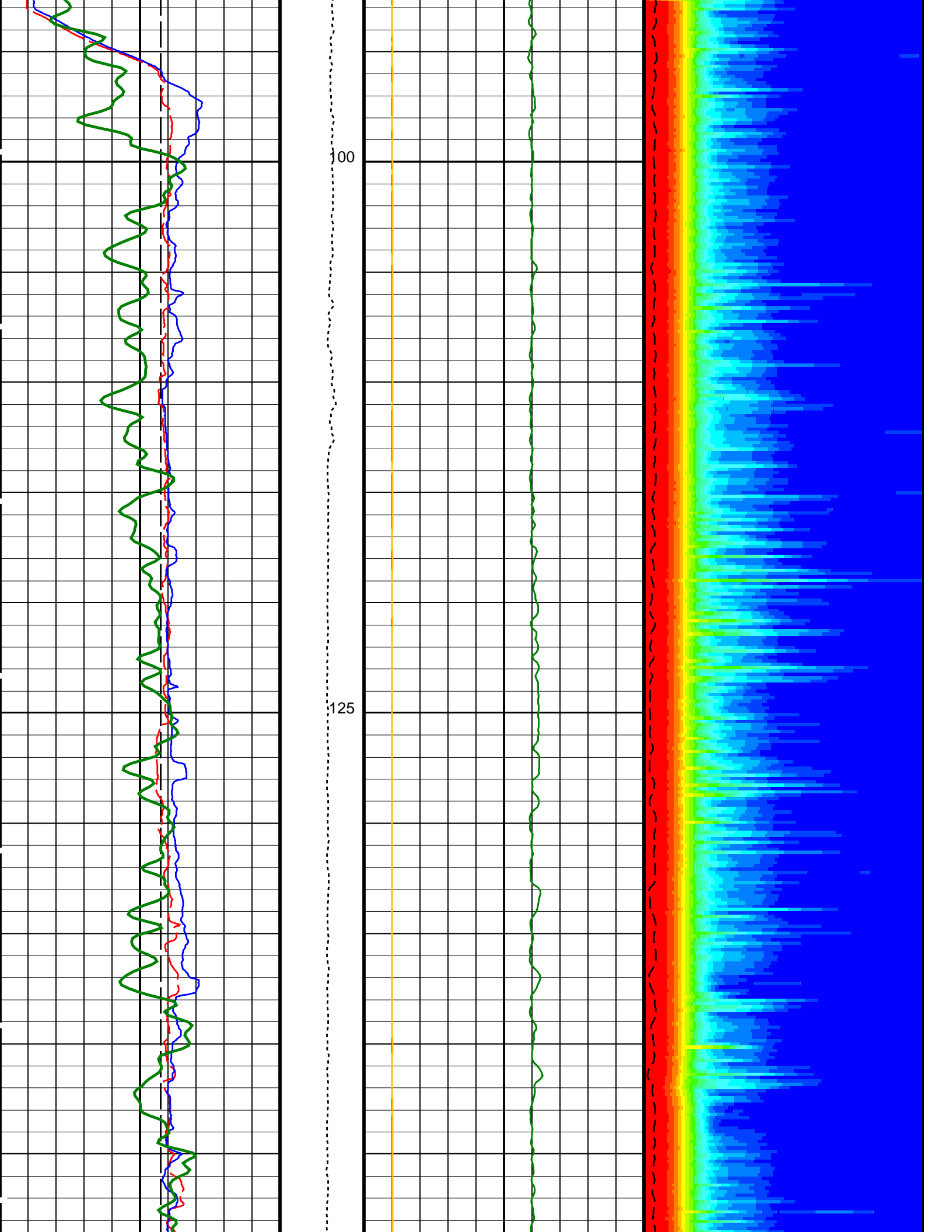
HNGS Spectroscopy Gamma Ray (HSGR)		
0	(GAPI)	100

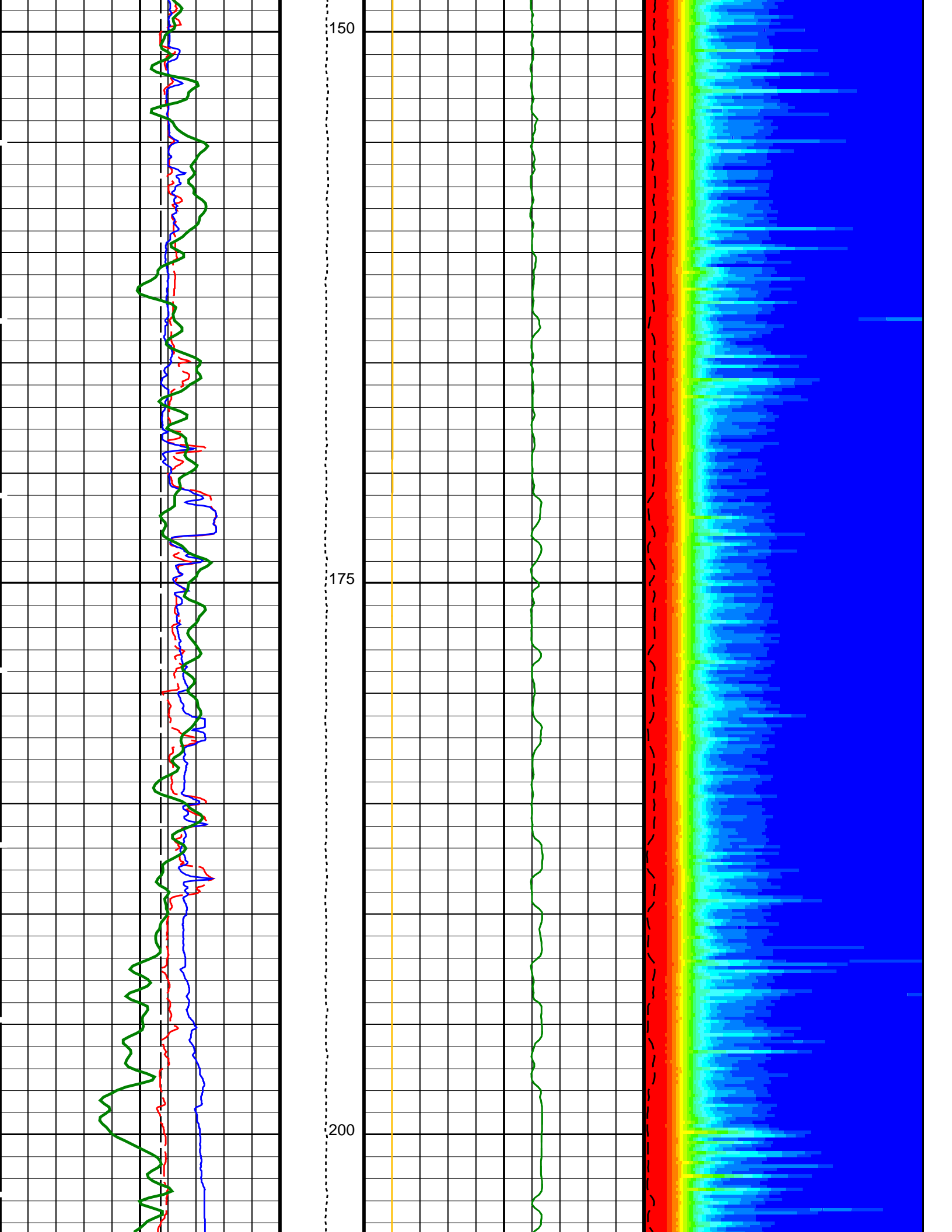
Caliper 2 (C2)		
0	(IN)	00

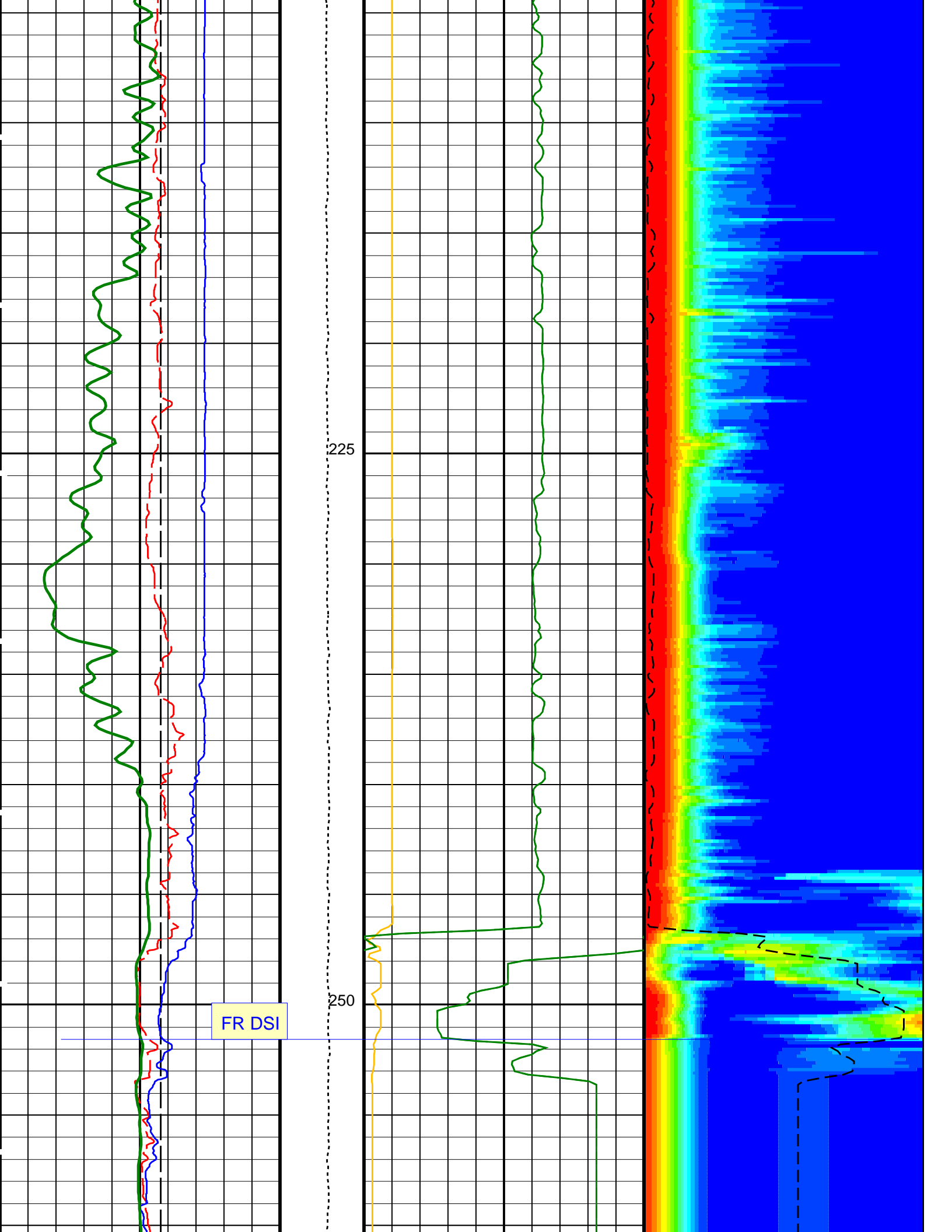
Delta-T Stoneley (DTST)		
440	(US/F)	40



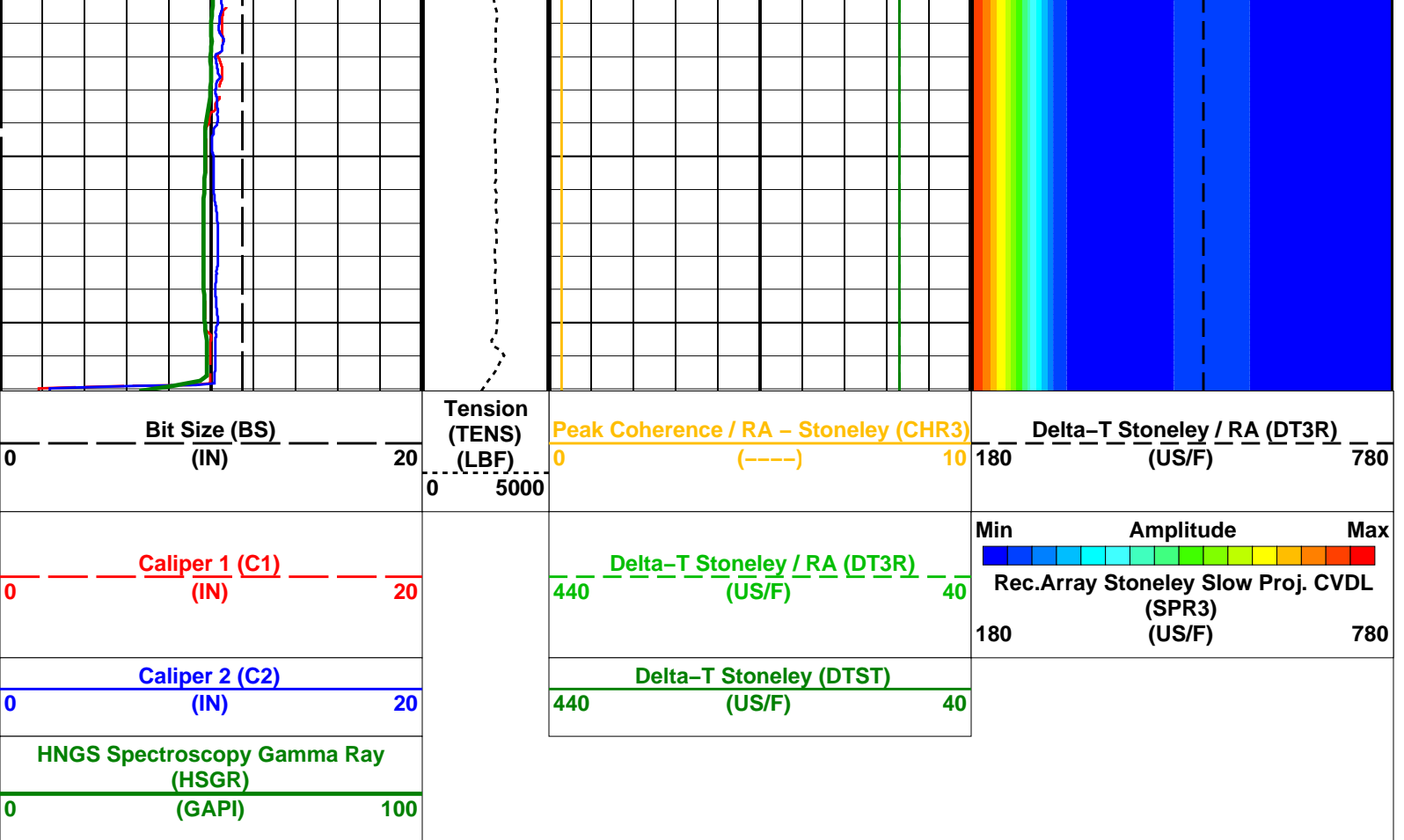












PIP SUMMARY

Time Mark Every 60 S

Parameters

DLIS Name	Description	Value
DSST-B: Dipole Shear Imager - B		
BHS	Borehole Status	OPEN
DDE3	Digitizing Delay 3	0 US
DDEX	Digitizing Delay X	0 US
DSI3	Digitizer Sample Interval 3	40 US
DSIX	Digitizer Sample Interval X	40 US
DTC3	Compressional Delta-T Source for DTCO Channel	PS_COMP
DWC3	Digitizer Word Count 3	512
DWCX	Digitizer Word Count X	512
GCSE	Generalized Caliper Selection	C1
MTXG	Monopole Transmitter Geometry	186 IN
NWI3	Number Waveform Items 3	8
NWIX	Number Waveform Items X	0
RX1G	Receiver 1 Geometry	294 IN
RX2G	Receiver 2 Geometry	300 IN
RX3G	Receiver 3 Geometry	306 IN
RX4G	Receiver 4 Geometry	312 IN
RX5G	Receiver 5 Geometry	318 IN
RX6G	Receiver 6 Geometry	324 IN
RX7G	Receiver 7 Geometry	330 IN
RX8G	Receiver 8 Geometry	336 IN
SAM3	DSST Sonic Acquisition Mode 3 - Monopole Mode for Stoneley	EVEN
SAMX	DSST Sonic Acquisition Mode X - Both Dipoles or Monopole Mode for Expert	OFF
SAS3	STC Sonic Array Status - Monopole Stoneley	255
SBO3	STC Search Band Offset - Monopole Stoneley	2000 US
SBW3	STC Search Bandwidth - Monopole Stoneley	6000 US
SFC3	STC Formation Character - Monopole Stoneley	SELECTABLE
SFM3	STC Filter - Monopole Stoneley	B.5-1.5K
SLL3	STC Slowness Lower Limit - Monopole Stoneley	180 US/F
SST3	STC Slowness Step - Monopole Stoneley	4 US/F
SSW3	STC Source Waveform - Monopole Stoneley	WF_SAM3
STLL	Label Slowness Lower Limit - Monopole Stoneley	180 US/F
STUL	Label Slowness Upper Limit - Monopole Stoneley	780 US/F
SUL3	STC Slowness Upper Limit - Monopole Stoneley	780 US/F
SWD3	STC Slowness Width - Monopole Stoneley	40 US/F
TBF3	STC Time for Baseline Fill - Monopole Stoneley	0 US
TL13	STC Time Lower Limit - Monopole Stoneley	620 US

TLL3	STC Time Lower Limit - Monopole Stoneley	620	US
TST3	STC Time Step - Monopole Stoneley	200	US
TUL3	STC Time Upper Limit - Monopole Stoneley	12020	US
TWD3	STC Time Width - Monopole Stoneley	2000	US
TWI3	STC Integration Time Window - Monopole Stoneley	1600	US
TWSX	Transmitter Waveform Select X	0	
<b>HNGS-BA: Hostile Natural Gamma Ray Sonde</b>			
BAR1	HNGS Detector 1 Barite Constant	1	
BAR2	HNGS Detector 2 Barite Constant	1	
BHK	HNGS Borehole Potassium Correction Concentration	0	
BHS	Borehole Status	OPEN	
CSD1	Inner Casing Outer Diameter	0	IN
CSD2	Outer Casing Outer Diameter	0	IN
CSW1	Inner Casing Weight	0	LB/F
CSW2	Outer Casing Weight	0	LB/F
DBCC	HNGS Barite Constant Correction Flag	NONE	
GCSE	Generalized Caliper Selection	C1	
H1P	HNGS Detector 1 Allow/Disallow In Processing	ALLOW	
H2P	HNGS Detector 2 Allow/Disallow In Processing	ALLOW	
HABK	HNGS Borehole Potassium Running Average	-0.0214685	
HALF	HNGS Alpha Filter Length	60	IN
HCRB	HNGS Apply Borehole Potassium Correction	NONE	
HMWM	Mud Weighting Material	BARI	
HNPE	HNGS Processing Enable	YES	
S1BI	HNGS Detector 1 Calibration Bismuth Count Rate	-999.25	CPS
S2BI	HNGS Detector 2 Calibration Bismuth Count Rate	-999.25	CPS
SGRC	HNGS Standard Gamma-Ray Correction Flag	YES	
TPOS	Tool Position	ECCE	
VBA1	HNGS Detector 1 Variable Barite Factor Running Average	0.973109	
VBA2	HNGS Detector 2 Variable Barite Factor Running Average	0.963734	
<b>EDTC-B: Enhanced DTS Cartridge</b>			
BHS	Borehole Status	OPEN	
GCSE	Generalized Caliper Selection	C1	
<b>System and Miscellaneous</b>			
BS	Bit Size	11.438	IN
DFD	Drilling Fluid Density	1.26	G/C3
DO	Depth Offset for Playback	-1081.3	M
PP	Playback Processing	NORMAL	

Format: DSST\_STONELEY\_VDL\_COLOR Vertical Scale: 1:200 Graphics File Created: 21-Sep-2013 12:59

## OP System Version: 19C0-187

MEST-B	19C0-187	DTA-A	19C0-187
DSST-B	19C0-187	HNGC-B	19C0-187
HNGS-BA	19C0-187	EDTC-B	SKK-5169-EDTCB

### Input DLIS Files

DEFAULT	FMS_DSI_NGS_022LUP	FN:21	PRODUCER	20-Sep-2013 04:13	1353.3 M	1038.6 M
---------	--------------------	-------	----------	-------------------	----------	----------

### Output DLIS Files

DEFAULT	FMS_DSI_NGS_046PUP	FN:52	PRODUCER	21-Sep-2013 12:59
CLIENT	FMS_DSI_NGS_046PUC	FN:53	CUSTOMER	21-Sep-2013 12:59

**Schlumberger**

**Calibrations**

MAXIS Field Log

#### Calibration and Check Summary

Measurement	Nominal	Master	Before	After	Change	Limit	Units
-------------	---------	--------	--------	-------	--------	-------	-------

Micro Electrical Scanner – B (Slim) Wellsite Calibration – Caliper Calibration

Before: Calibration out of date 22-May-2013 19:08

Caliper 1 Zero Measurement	12.00	N/A	12.11	N/A	N/A	N/A	IN
Caliper 2 Zero Measurement	12.00	N/A	12.10	N/A	N/A	N/A	IN
Caliper 1 Plus Measurement	15.19	N/A	15.21	N/A	N/A	N/A	IN
Caliper 2 Plus Measurement	15.19	N/A	15.37	N/A	N/A	N/A	IN

Micro Electrical Scanner – B (Slim) Wellsite Calibration – CROUZET ACCELEROMETER PROM HAS BEEN READ CORRECTLY

Before: 20-Sep-2013 2:32

TEMPERATURE REFERENCE :	N/A	N/A	20	N/A	N/A	N/A	DEGC
YEAR OF CALIBRATION :	N/A	N/A	99	N/A	N/A	N/A	
MONTH OF CALIBRATION :	N/A	N/A	3	N/A	N/A	N/A	
SERIAL NUMBER :	N/A	N/A	743	N/A	N/A	N/A	

Micro Electrical Scanner – B (Slim) Wellsite Calibration – CROUZET MAGNETOMETER PROM HAS BEEN READ CORRECTLY

Before: 20-Sep-2013 2:32

TEMPERATURE REFERENCE :	N/A	N/A	23	N/A	N/A	N/A	DEGC
YEAR OF CALIBRATION :	N/A	N/A	3	N/A	N/A	N/A	
MONTH OF CALIBRATION :	N/A	N/A	9	N/A	N/A	N/A	
SERIAL NUMBER :	N/A	N/A	507	N/A	N/A	N/A	

Hostile Natural Gamma Ray Sonde Wellsite Calibration – Detector 1 Check

Master: 29-Jul-2013 20:46 Before: 19-Sep-2013 18:19 After: 19-Sep-2013 22:02

Na 511 Peak Loc	40.00	39.74	39.66	39.56	-0.09800	1.000	
Na 511 Peak Res	15.50	15.31	15.17	16.33	1.168	2.000	%
High Voltage	1150	1168	1176	1177	0.3591	N/A	V
Na 1785 Peak Loc	142.6	142.6	142.6	141.8	-0.8471	7.000	
Na 1785 Peak Res	8.500	9.002	8.753	9.095	0.3424	2.000	%
Temperature	15.50	21.46	30.57	29.49	-1.081	N/A	DEGC
Na Count Rate	45.00	15.10	13.57	12.85	-0.7143	8.000	CPS

Hostile Natural Gamma Ray Sonde Wellsite Calibration – Detector 2 Check

Master: 29-Jul-2013 20:46 Before: 19-Sep-2013 18:19 After: 19-Sep-2013 22:02

Na 511 Peak Loc	40.00	39.58	39.77	39.66	-0.1100	1.000	
Na 511 Peak Res	15.50	16.04	16.03	15.80	-0.2308	2.000	%
High Voltage	1150	1093	1110	1111	1.164	N/A	V
Na 1785 Peak Loc	142.6	141.7	140.4	142.4	2.014	7.000	
Na 1785 Peak Res	8.500	9.499	9.518	8.749	-0.7685	2.000	%
Temperature	15.50	21.65	31.21	31.20	-0.01138	N/A	DEGC
Na Count Rate	45.00	14.93	13.61	12.82	-0.7925	8.000	CPS

Hostile Natural Gamma Ray Sonde Wellsite Calibration – Ratio Of Detector 1 To Detector 2

Master: 29-Jul-2013 20:46 Before: 19-Sep-2013 18:19 After: 19-Sep-2013 22:02

Coincidence Count Rate Ratio	1.000	1.015	0.9964	1.002	0.005705	0.05000	
------------------------------	-------	-------	--------	-------	----------	---------	--

Enhanced DTS Cartridge Wellsite Calibration – EDTC Accelerometer Calibration

Before: 19-Sep-2013 18:19

EDTC Z-Axis Acceleration	9.810	N/A	9.759	N/A	N/A	N/A	M/S2
--------------------------	-------	-----	-------	-----	-----	-----	------

Enhanced DTS Cartridge Wellsite Calibration – Detector Calibration

Before: 19-Sep-2013 18:15 After: 19-Sep-2013 21:58

Gamma Ray (Jig – Bkg)	154.9	N/A	154.9	157.4	2.498	14.08	GAPI
Gamma Ray (Calibrated)	165.0	N/A	165.0	167.7	2.660	15.00	GAPI

Micro Electrical Scanner – B (Slim) / Equipment Identification

Primary Equipment:

MEST Sonde – B	MEDS – B	724
MEST Preamplifier Cartridge – AB	MEPC – AB	807
GPIT Cartridge – AC	GPIC – AC	840
MEST Acquisition Cartridge – A	MEAC – A	875

Auxiliary Equipment:

MEST-B Preamplifier Cartridge Housing	MEPH – A	702
MEST Acquisition Cartridge Housing (Slim)	MEAH – B	769

Hostile Natural Gamma Ray Cartridge – B / Equipment Identification

Primary Equipment:

HNGC Cartridge	HNGC – B	300
----------------	----------	-----

Auxiliary Equipment:

HNGC Housing	HNGH – A	115
--------------	----------	-----

Hostile Natural Gamma Ray Sonde / Equipment Identification

Primary Equipment:  
HNGS Sonde

HNGS – BA 194

Auxiliary Equipment:  
HNGS Sonde Housing  
Gamma Source Radioactive

HNSH – BA 205  
GSR – U 616008

Hostile Natural Gamma Ray Sonde Wellsite Calibration

Detector 1 Check

Phase	Na 511 Peak Loc	Value	Phase	Na 511 Peak Res %	Value	Phase	High Voltage V	Value
Master		39.74	Master		15.31	Master		1168
Before		39.66	Before		15.17	Before		1176
After		39.56	After		16.33	After		1177
	37.50 (Minimum) 40.00 (Nominal) 43.50 (Maximum)			12.00 (Minimum) 15.50 (Nominal) 19.00 (Maximum)			900.0 (Minimum) 1150 (Nominal) 1600 (Maximum)	
Phase	Na 1785 Peak Loc	Value	Phase	Na 1785 Peak Res %	Value	Phase	Temperature DEGC	Value
Master		142.6	Master		9.002	Master		21.46
Before		142.6	Before		8.753	Before		30.57
After		141.8	After		9.095	After		29.49
	135.0 (Minimum) 142.6 (Nominal) 150.3 (Maximum)			7.000 (Minimum) 8.500 (Nominal) 11.00 (Maximum)			-28.89 (Minimum) 15.50 (Nominal) 60.00 (Maximum)	
Phase	Na Count Rate CPS	Value						
Master		15.10						
Before		13.57						
After		12.85						
	10.00 (Minimum) 45.00 (Nominal) 100.0 (Maximum)							
Master: 29-Jul-2013 20:46			Before: 19-Sep-2013 18:19			After: 19-Sep-2013 22:02		

Hostile Natural Gamma Ray Sonde Wellsite Calibration

Detector 2 Check

Phase	Na 511 Peak Loc	Value	Phase	Na 511 Peak Res %	Value	Phase	High Voltage V	Value
Master		39.58	Master		16.04	Master		1093
Before		39.77	Before		16.03	Before		1110
After		39.66	After		15.80	After		1111
	37.50 (Minimum) 40.00 (Nominal) 43.50 (Maximum)			12.00 (Minimum) 15.50 (Nominal) 19.00 (Maximum)			900.0 (Minimum) 1150 (Nominal) 1600 (Maximum)	
Phase	Na 1785 Peak Loc	Value	Phase	Na 1785 Peak Res %	Value	Phase	Temperature DEGC	Value
Master		141.7	Master		9.499	Master		21.65
Before		140.4	Before		9.518	Before		31.21
After		142.4	After		8.749	After		31.20
	135.0 (Minimum) 142.6 (Nominal) 150.3 (Maximum)			7.000 (Minimum) 8.500 (Nominal) 11.00 (Maximum)			-28.89 (Minimum) 15.50 (Nominal) 60.00 (Maximum)	
Phase	Na Count Rate CPS	Value						
Master		14.93						
Before		13.61						
After		12.82						
	10.00 (Minimum) 45.00 (Nominal) 100.0 (Maximum)							
Master: 29-Jul-2013 20:46			Before: 19-Sep-2013 18:19			After: 19-Sep-2013 22:02		

Hostile Natural Gamma Ray Sonde Wellsite Calibration

Ratio Of Detector 1 To Detector 2

Phase	Coincidence Count Rate Ratio	Value
Master		1.015

Before		0.9964
After		1.002
	0.9500 (Minimum)      1.000 (Nominal)      1.050 (Maximum)	
Master: 29-Jul-2013 20:46		
Before: 19-Sep-2013 18:19		
After: 19-Sep-2013 22:02		

Enhanced DTS Cartridge / Equipment Identification

Primary Equipment:		
EDTC Gamma Ray Detector	EDTG - A/B	8305
Enhanced DTS Cartridge	EDTC - B	8317
Auxiliary Equipment:		
EDTC Housing	EDTH - B	8303

Enhanced DTS Cartridge Wellsite Calibration		
EDTC Accelerometer Calibration		
Phase	EDTC Z-Axis Acceleration M/S2	Value
Before		9.759
	9.610 (Minimum)      9.810 (Nominal)      10.01 (Maximum)	
Before: 19-Sep-2013 18:19		

Enhanced DTS Cartridge Wellsite Calibration									
Detector Calibration									
Phase	Gamma Ray Background GAPI	Value	Phase	Gamma Ray (Jig - Bkg) GAPI	Value	Phase	Gamma Ray (Calibrated) GAPI	Value	
Before		7.622	Before		154.9	Before		165.0	
After		7.111	After		157.4	After		167.7	
	0 (Minimum)      30.00 (Nominal)      120.0 (Maximum)			140.8 (Minimum)      154.9 (Nominal)      169.0 (Maximum)			150.0 (Minimum)      165.0 (Nominal)      180.0 (Maximum)		
Before: 19-Sep-2013 18:15			After: 19-Sep-2013 21:58						

Company: **Lamont Doherty Earth Observatory**



Well: **Expedition 346, Site U1430B**

Field: **Asian Monsoon**

Rig: **JOIDES Resolution**

Country: **USA**

DSI  
Stoneley