

DISCLAIMER

THE USE OF AND RELIANCE UPON THIS RECORDED-DATA BY THE HEREIN NAMED COMPANY (AND ANY OF ITS AFFILIATES, PARTNERS, REPRESENTATIVES, AGENTS, CONSULTANTS AND EMPLOYEES) IS SUBJECT TO THE TERMS AND CONDITIONS AGREED UPON BETWEEN SCHLUMBERGER AND THE COMPANY, INCLUDING: (a) RESTRICTIONS ON USE OF THE RECORDED-DATA; (b) DISCLAIMERS AND WAIVERS OF WARRANTIES AND REPRESENTATIONS REGARDING COMPANY'S USE OF AND RELIANCE UPON THE RECORDED-DATA; AND (c) CUSTOMER'S FULL AND SOLE RESPONSIBILITY FOR ANY INFERENCE DRAWN OR DECISION MADE IN CONNECTION WITH THE USE OF THIS RECORDED-DATA.

OTHER SERVICES1
 OS1: HNGS
 OS2: HRLA/HLDS
 OS3: FMS
 OS4: MSS

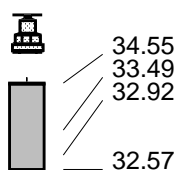
REMARKS: RUN NUMBER 1

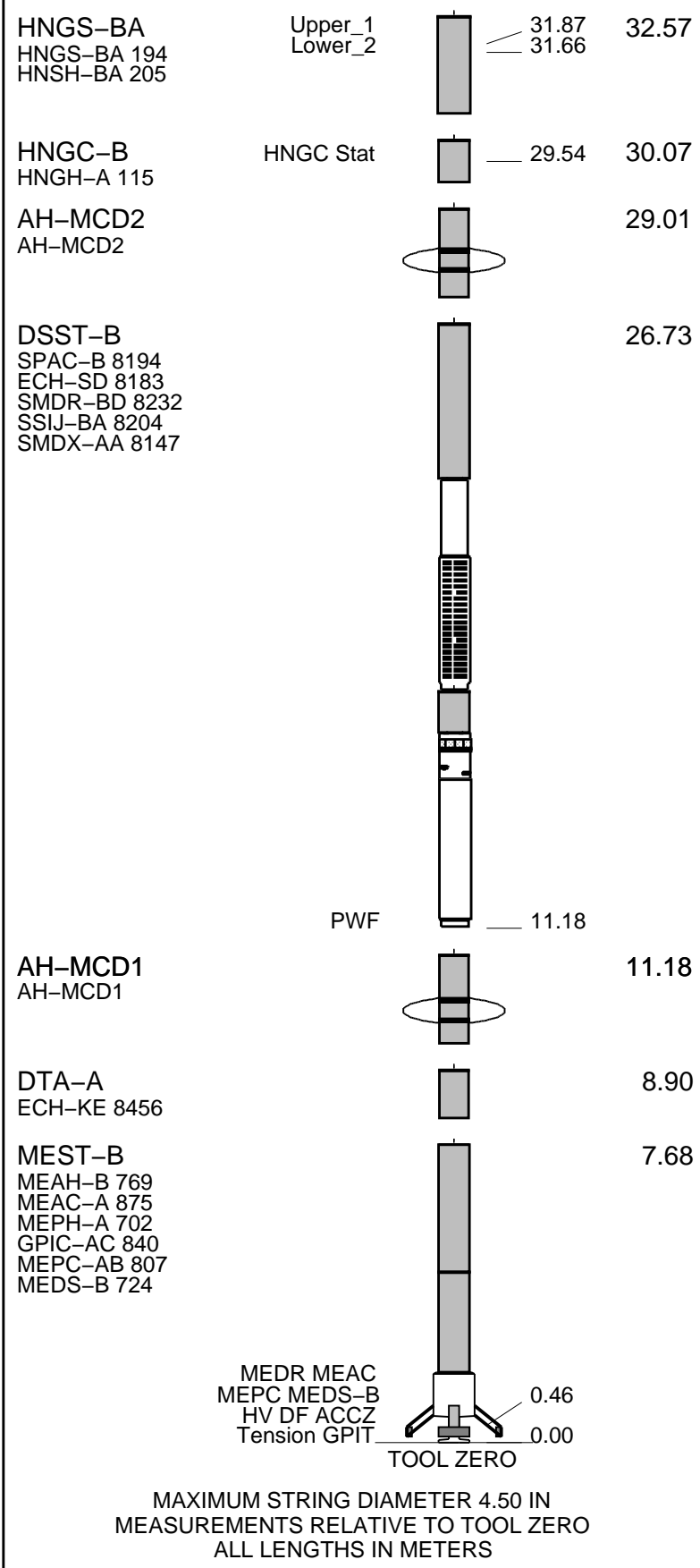
Hole drilled with RCB coring bit and bottom hole assembly (BHA). 9 7/8 " BS
 Free-Fall Funnel deployed for re-entry without casing.
 Bit placed at 96.5mbsf (driller's depth) prior to logging; logs tied into Run 1, Pass 2 bit depth due to low GR at sea bed.
 Hole was displaced to water-based mud prior to logging.
 Tools run as per tool sketch with entire string centralized using two modified MCD inline bowpring centralizers.
 Logs recorded in real-time with depth zero at drill floor; final depth adjusted to have zero at sea floor for core compatibilit
 Depth reference for this hole was the second pass of the first run; all other logs tied into that pass.
 Hole obstructed at a depth of 368.6mbsf; tools unable to pass below this depth; logs recorded from this depth up.
 FMS run with calipers open for upward passes and EMEX in automatic mode.
 DSI run with the following modes active for all passes:
 Upper Dipole in Low Frequency
 Lower Dipole in Standard Frequency
 P&S Monopole in Standard Frequency
 Stoneley (Monopole) in Standard Frequency
 Bit located at 96.5mbsf for downlog and first pass; raised to 79.3mbsf prior to second pass to maximize logged interval.
 FMS Caliper closed and EMEX deactivated at 122.8mbsf to facilitate pipe entry.

RUN 1			RUN 2		
SERVICE ORDER #:			SERVICE ORDER #:		
PROGRAM VERSION: 19C0-187			PROGRAM VERSION:		
FLUID LEVEL:			FLUID LEVEL:		
LOGGED INTERVAL	START	STOP	LOGGED INTERVAL	START	STOP

EQUIPMENT DESCRIPTION

RUN 1	RUN 2
SURFACE EQUIPMENT	
GSR-U 616008 WITM (EDTS)-A	

RUN 1	RUN 2
DOWNHOLE EQUIPMENT	
LEH-QT LEH-QT 301 EDTC-B EDTH-B 8303 EDTC-B 8317 EDTG-A/B 8305	MDSB_EDTC Mud Tempe CTEM Gamma Ray EFTB DIAG TelStatus EDTCB Ele
	35.44 34.55



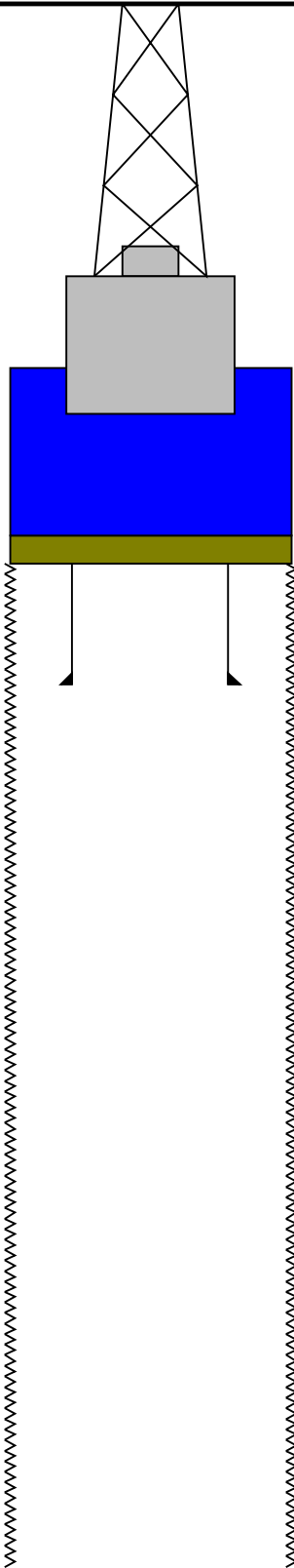
Production String	(in) (m)	Well Schematic	(m) (in)	Casing String
-------------------	----------	----------------	----------	---------------

Kelly Bushing Elevation
Derrick Floor Elevation

Mean Sea Level

-3173.0
-3173.0

-3162.2



0.0

96.5

529.8

5.500

4.000

9.875

Sea Bed

Bit

Total Depth - Driller

Schlumberger

Downlog

MAXIS Field Log

Company: Lamont Doherty Earth Observatory

Well: Expedition 352, Site U1442A

Input DLIS Files

DEFAULT	Flip_FMS_DSI_NGS_048LUP	PRODUCER	26-Sep-2014 12:42	3472.5 M	3118.1 M
---------	-------------------------	----------	-------------------	----------	----------

Output DLIS Files

DEFAULT	FMS_DSI_NGS_049PUP	FN:66	PRODUCER	26-Sep-2014 12:45	299.5 M	-18.1 M
CLIENT	FMS_DSI_NGS_049PUC	FN:67	CUSTOMER	26-Sep-2014 12:45	299.5 M	-18.1 M

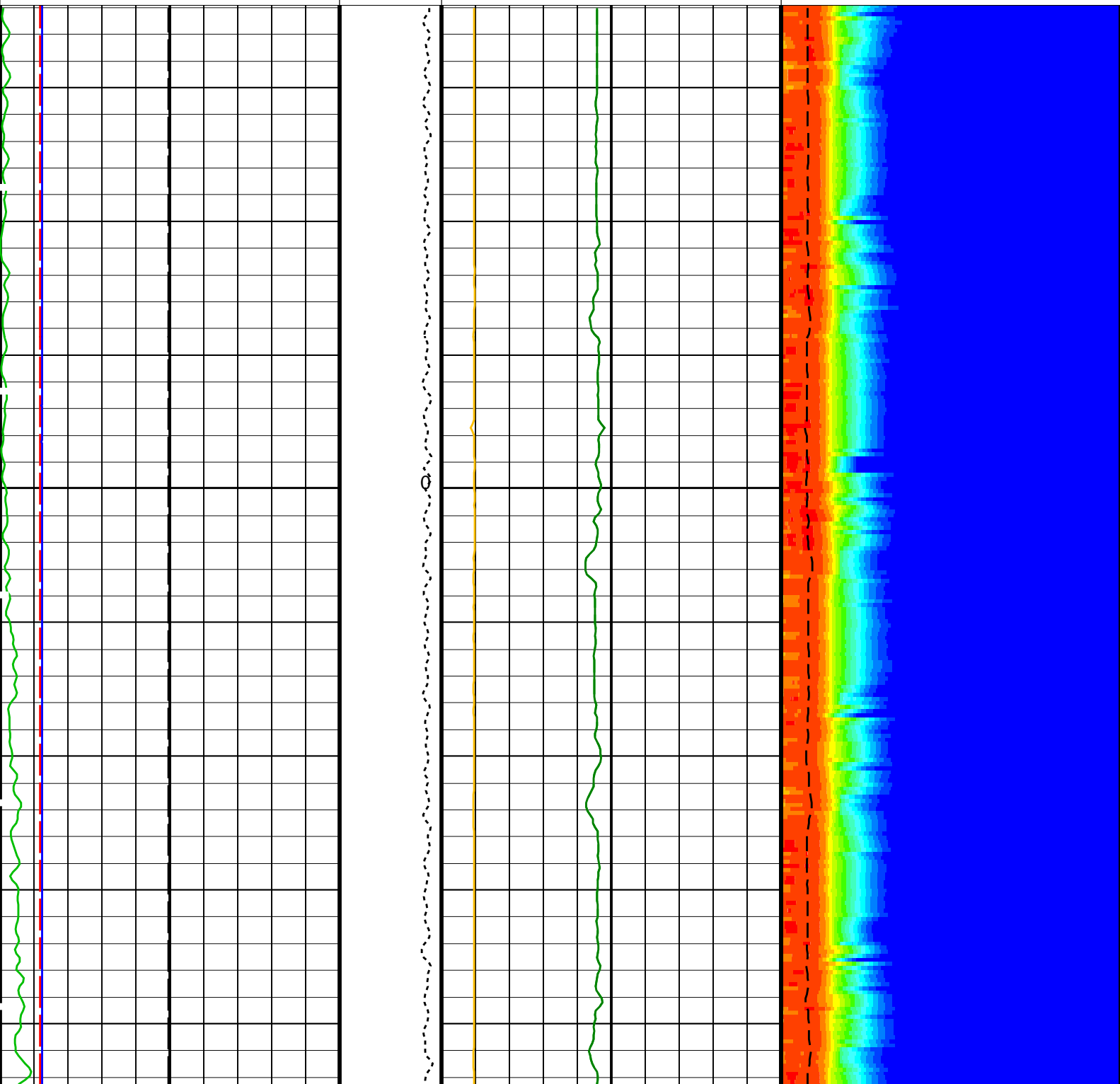
OP System Version: 19C0-187

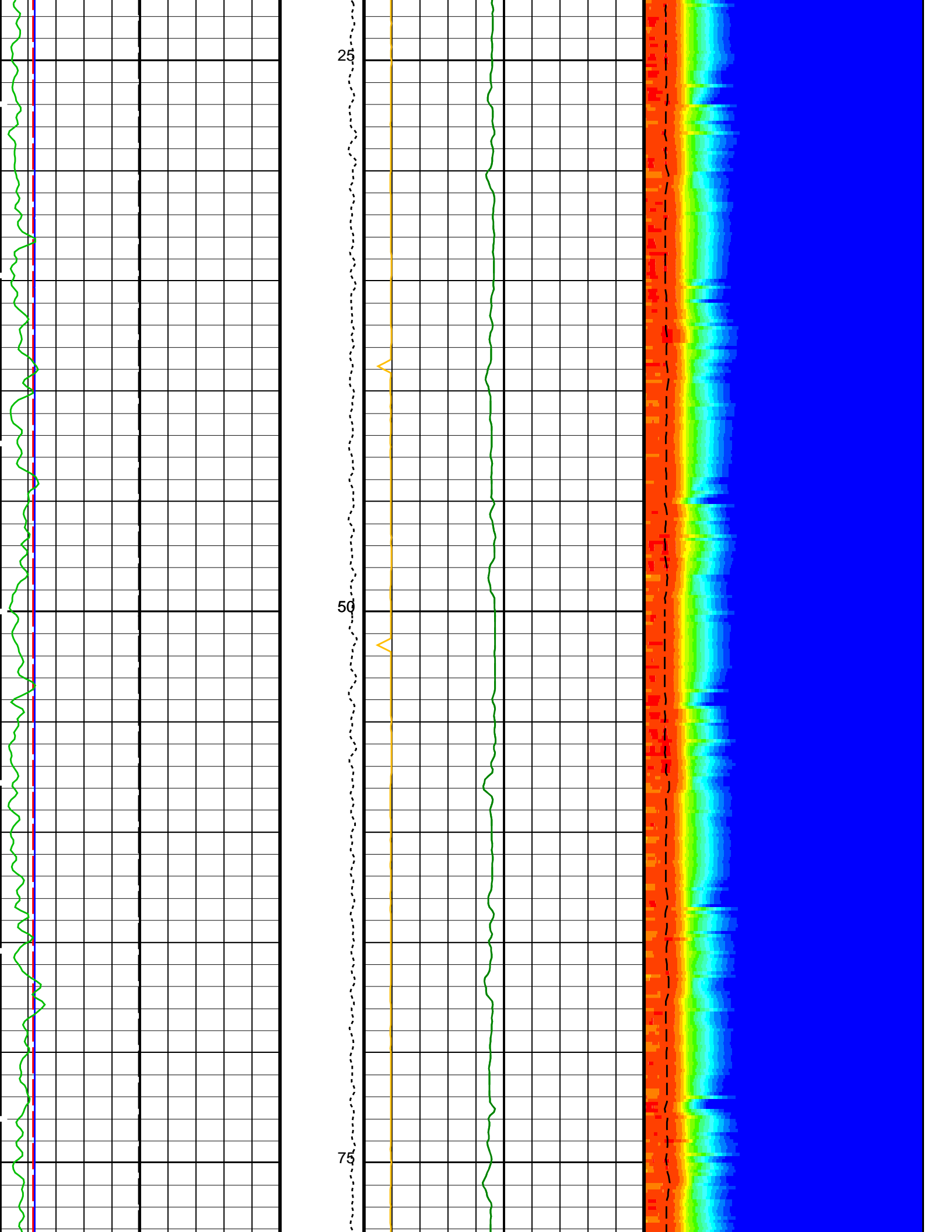
MEST-B	19C0-187	DTA-A	19C0-187
DSST-B	19C0-187	HNGC-B	19C0-187
HNGS-BA	19C0-187	EDTC-B	SKK-5169-EDTCB

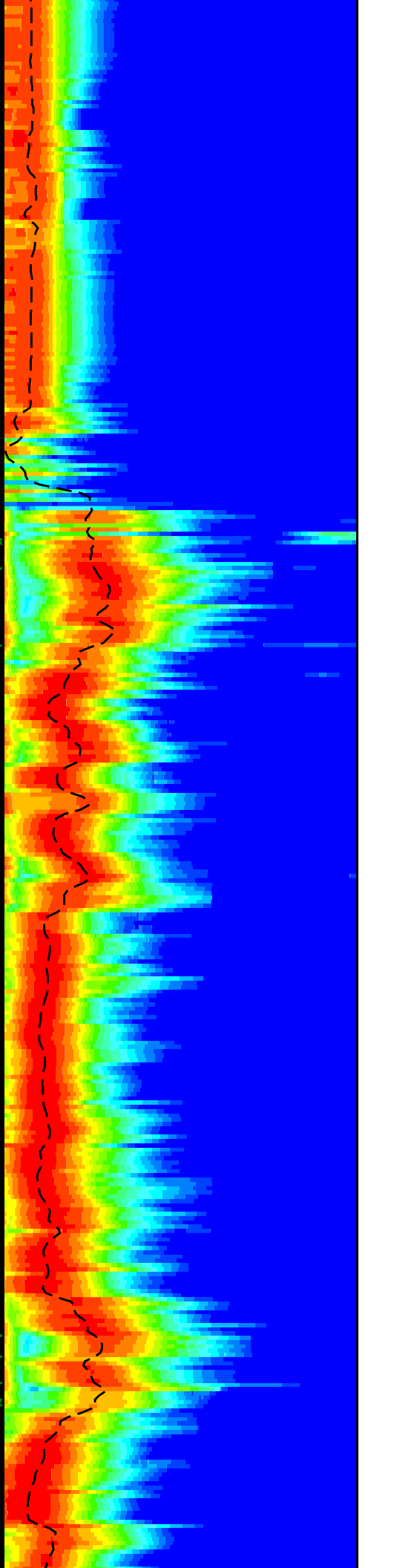
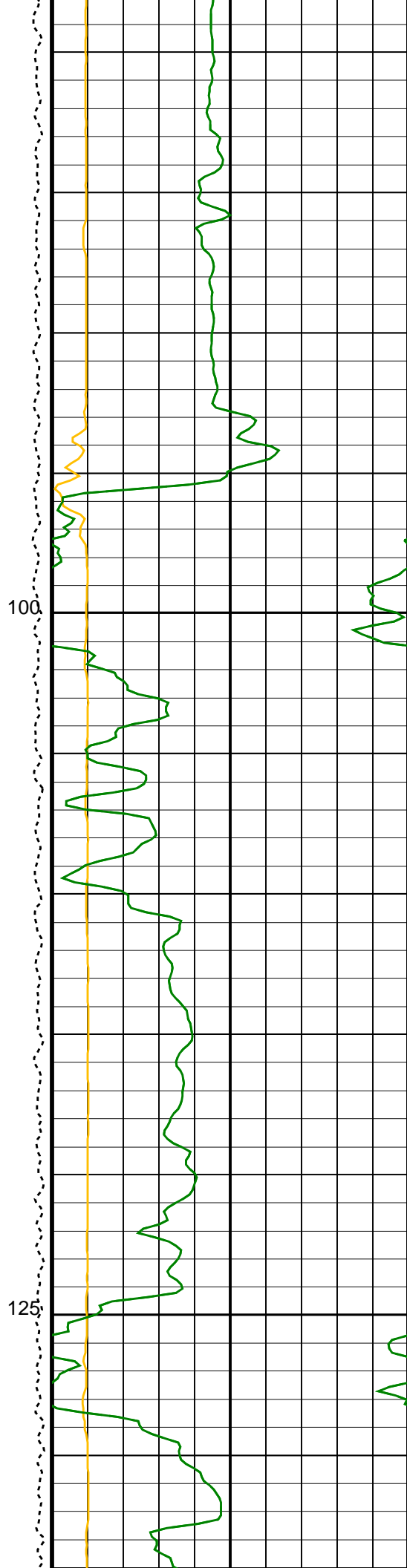
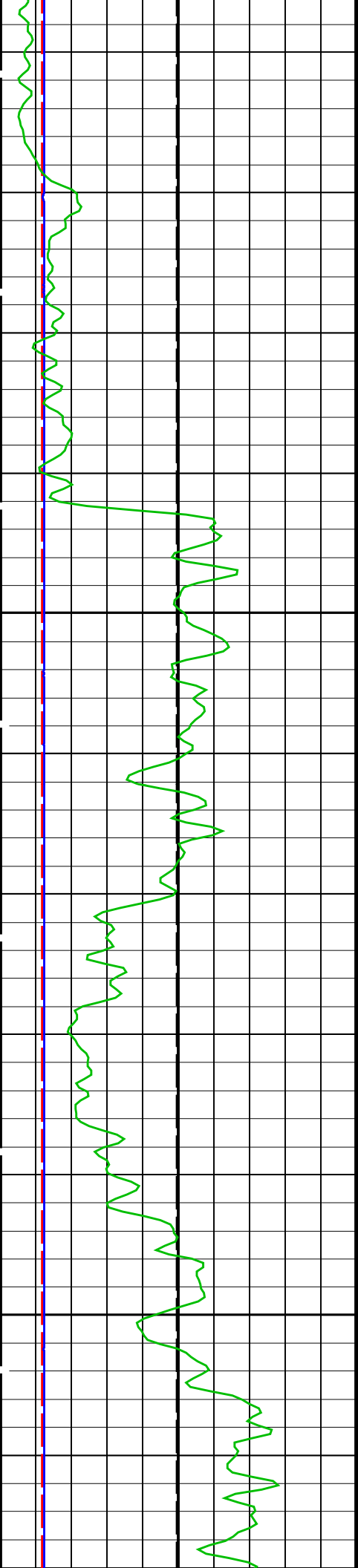
PIP SUMMARY

Time Mark Every 60 S

<p>Gamma Ray (GR_EDTC) (GAPI) 0 40</p>		
<p>Caliper 2 (C2) (IN) 0 20</p>	<p>Delta-T Stoneley (DTST) (US/F) 440 40</p>	
<p>Caliper 1 (C1) (IN) 0 20</p>	<p>Delta-T Stoneley / RA (DT3R) (US/F) 440 40</p>	<p>Min Amplitude Max Rec.Array Stoneley Slow Proj. CVDL (SPR3) (US/F) 180 1200</p>
<p>Bit Size (BS) (IN) 0 20</p>	<p>Tension (TENS) (LBF) 0 5000</p> <p>Peak Coherence / RA - Stoneley (CHR3) (-----) 0 10</p>	<p>Delta-T Stoneley / RA (DT3R) (US/F) 180 1200</p>

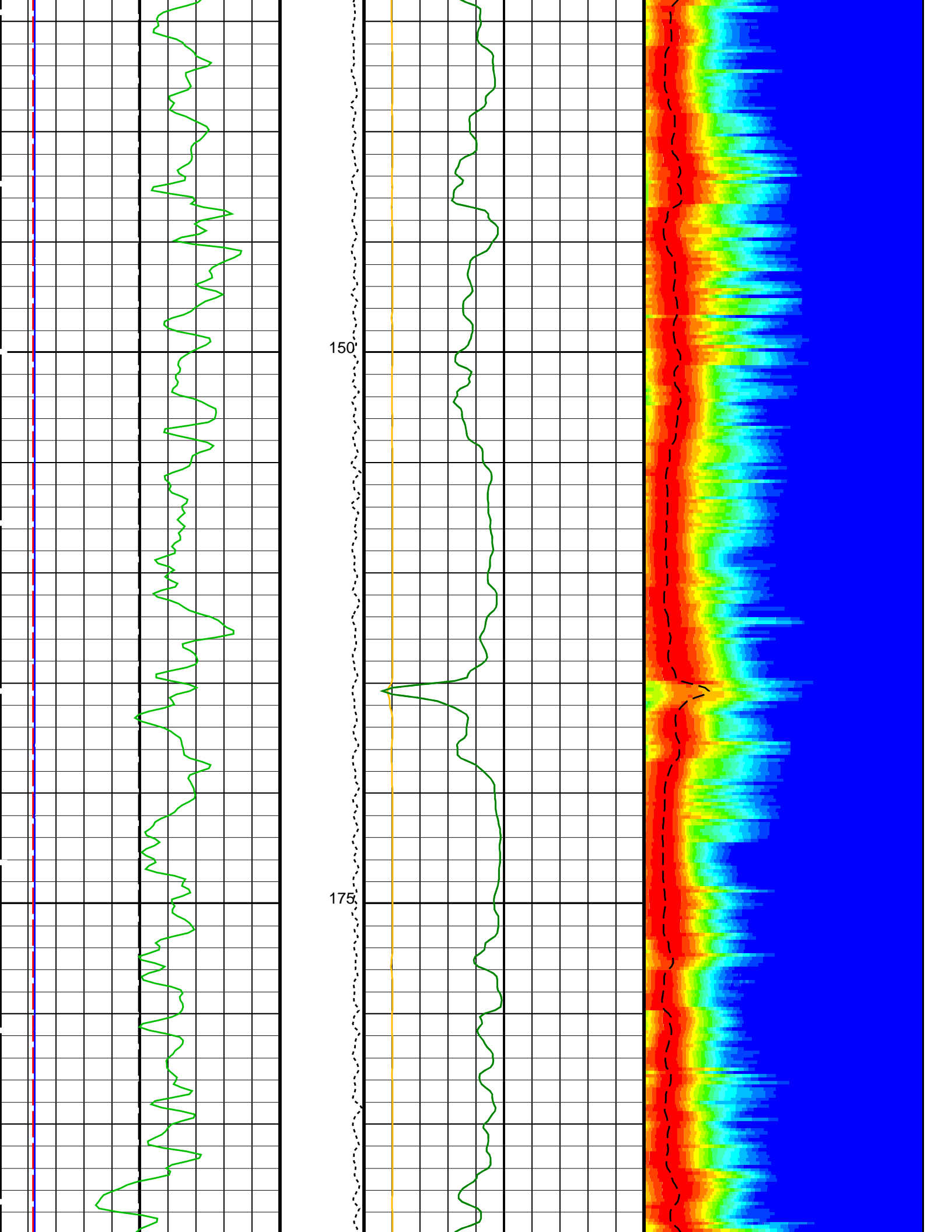


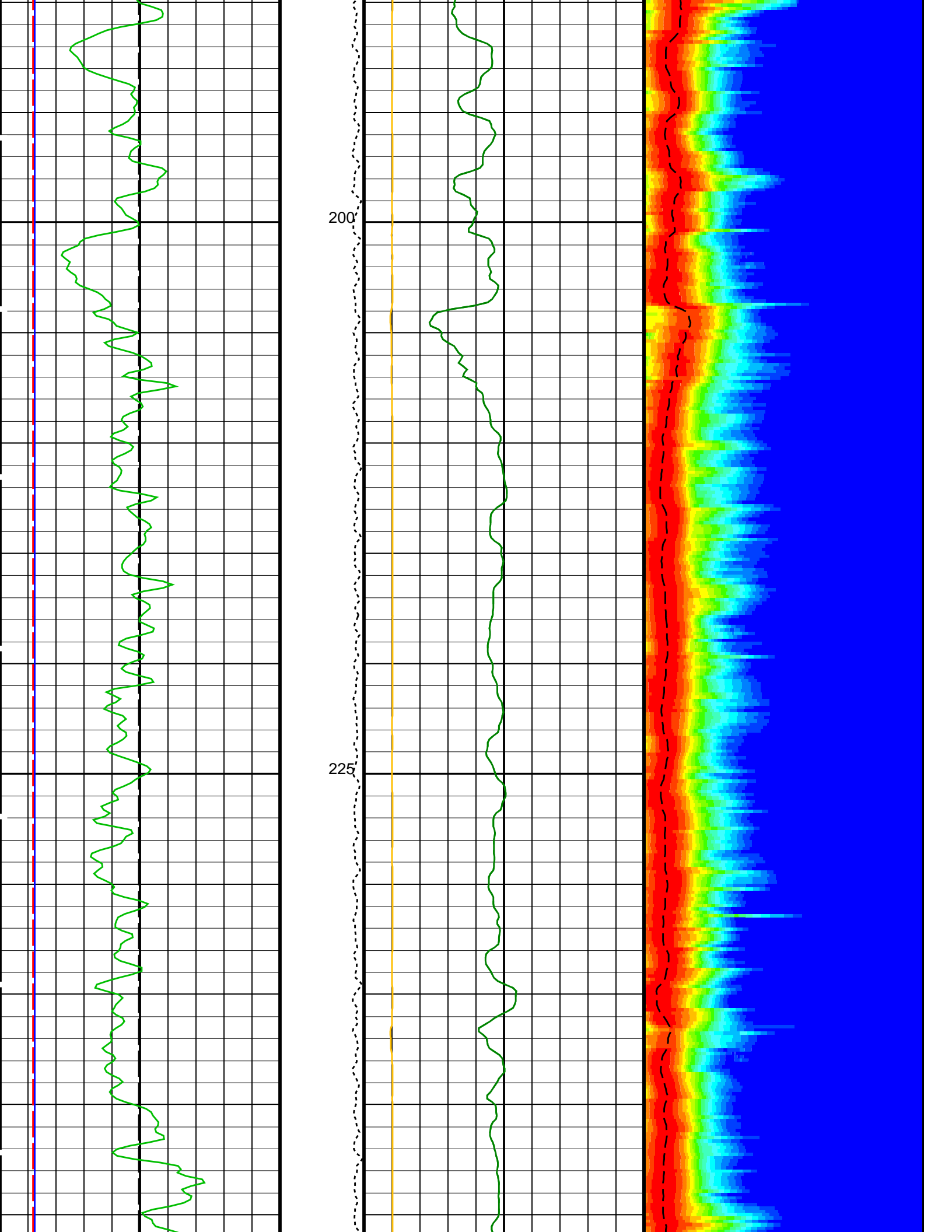


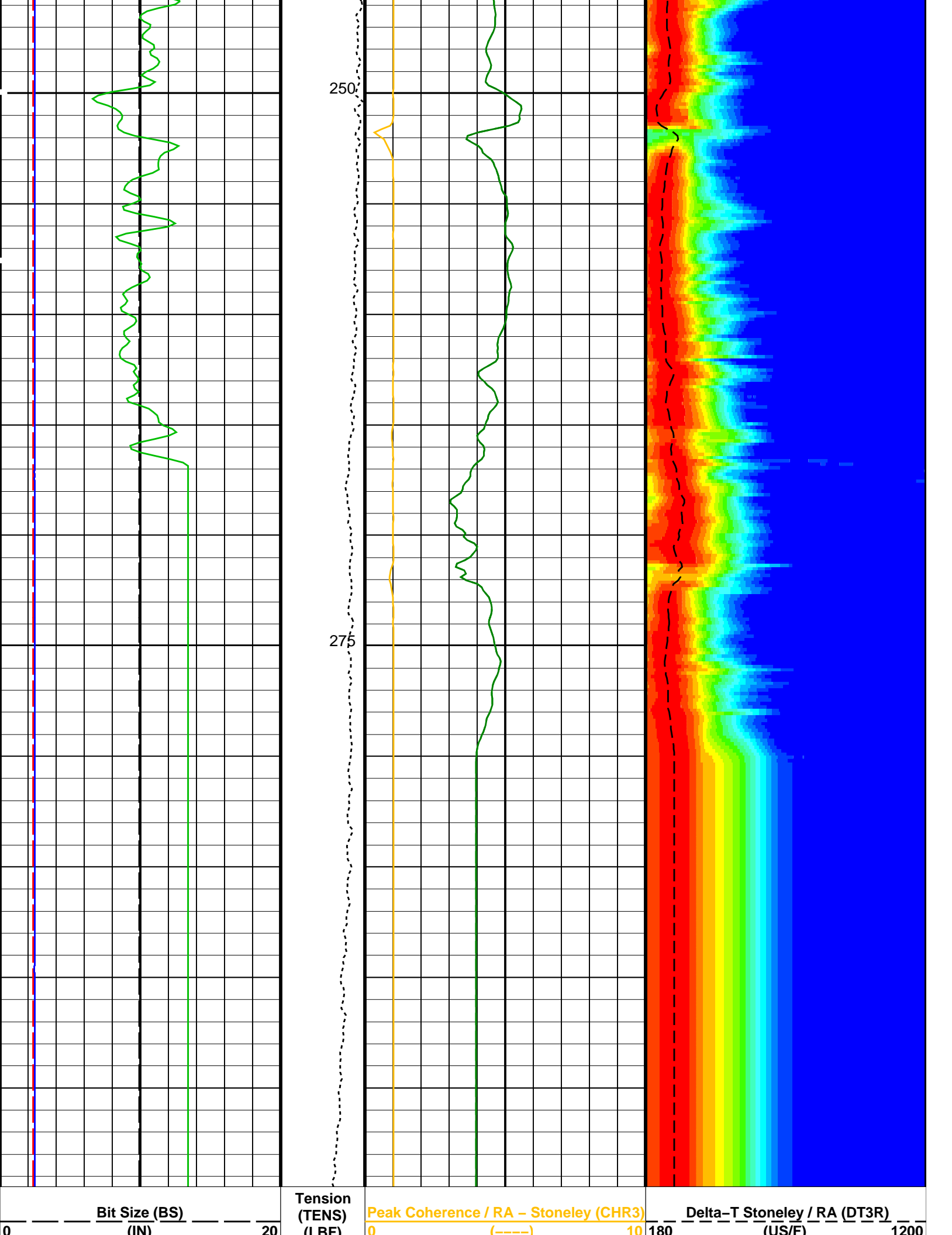


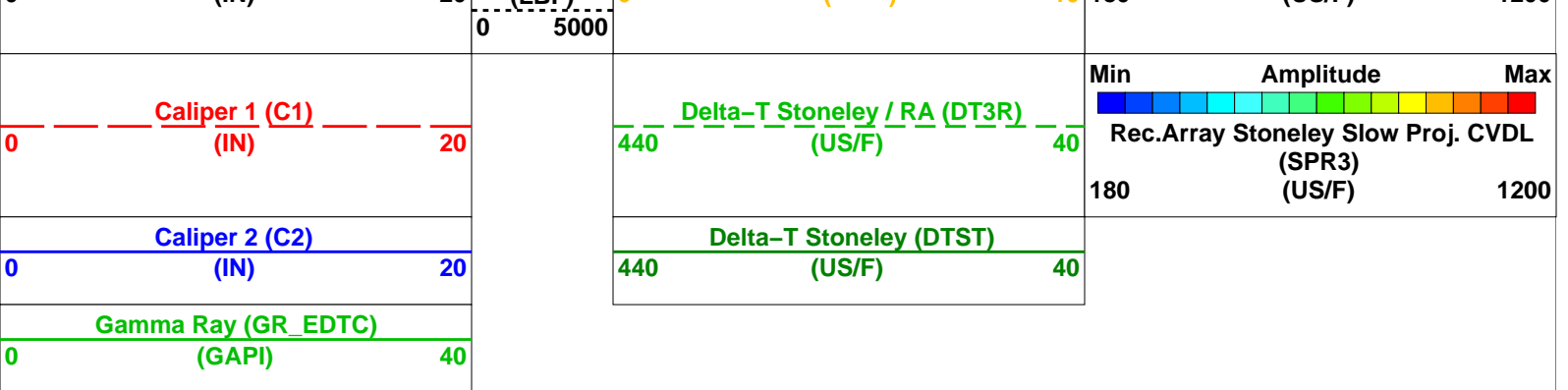
100

125









PIP SUMMARY

Time Mark Every 60 S

Parameters

DLIS Name	Description	Value
DSST-B: Dipole Shear Imager - B		
DDE3	Digitizing Delay 3	0 US
DDEX	Digitizing Delay X	0 US
DSI3	Digitizer Sample Interval 3	40 US
DSIX	Digitizer Sample Interval X	40 US
DTCS	Compressional Delta-T Source for DTCO Channel	PS_COMP
DWC3	Digitizer Word Count 3	512
DWCX	Digitizer Word Count X	512
MTXG	Monopole Transmitter Geometry	186 IN
NWI3	Number Waveform Items 3	8
NWIX	Number Waveform Items X	0
RX1G	Receiver 1 Geometry	294 IN
RX2G	Receiver 2 Geometry	300 IN
RX3G	Receiver 3 Geometry	306 IN
RX4G	Receiver 4 Geometry	312 IN
RX5G	Receiver 5 Geometry	318 IN
RX6G	Receiver 6 Geometry	324 IN
RX7G	Receiver 7 Geometry	330 IN
RX8G	Receiver 8 Geometry	336 IN
SAM3	DSST Sonic Acquisition Mode 3 - Monopole Mode for Stoneley	ODD
SAMX	DSST Sonic Acquisition Mode X - Both Dipoles or Monopole Mode for Expert	OFF
SAS3	STC Sonic Array Status - Monopole Stoneley	255
SBO3	STC Search Band Offset - Monopole Stoneley	2000 US
SBW3	STC Search Bandwidth - Monopole Stoneley	6000 US
SFC3	STC Formation Character - Monopole Stoneley	SELECTABLE
SFM3	STC Filter - Monopole Stoneley	B.5-1.5K
SLL3	STC Slowness Lower Limit - Monopole Stoneley	180 US/F
SST3	STC Slowness Step - Monopole Stoneley	4 US/F
SSW3	STC Source Waveform - Monopole Stoneley	WF_SAM3
STLL	Label Slowness Lower Limit - Monopole Stoneley	180 US/F
STUL	Label Slowness Upper Limit - Monopole Stoneley	1200 US/F
SUL3	STC Slowness Upper Limit - Monopole Stoneley	1200 US/F
SWD3	STC Slowness Width - Monopole Stoneley	40 US/F
TBF3	STC Time for Baseline Fill - Monopole Stoneley	0 US
TLL3	STC Time Lower Limit - Monopole Stoneley	620 US
TST3	STC Time Step - Monopole Stoneley	200 US
TUL3	STC Time Upper Limit - Monopole Stoneley	15800 US
TWD3	STC Time Width - Monopole Stoneley	2000 US
TWI3	STC Integration Time Window - Monopole Stoneley	1600 US
TWSX	Transmitter Waveform Select X	0
System and Miscellaneous		
BS	Bit Size	9.875 IN
DO	Depth Offset for Playback	-3173.0 M
PP	Playback Processing	RECOMPUTE

Format: DSST_STONELEY_VDL_COLOR Vertical Scale: 1:200 Graphics File Created: 26-Sep-2014 12:45

OP System Version: 19C0-187

MEST-B	19C0-187	DTA-A	19C0-187
DSST-B	19C0-187	HNGC-B	19C0-187
HNGS-BA	19C0-187	EDTC-B	SKK-5169-EDTCB

Input DLIS Files

DEFAULT	Flip_FMS_DSI_NGS_048LUP	PRODUCER	26-Sep-2014 12:42	3472.5 M	3118.1 M
---------	-------------------------	----------	-------------------	----------	----------

Output DLIS Files

DEFAULT	FMS_DSI_NGS_049PUP	FN:66	PRODUCER	26-Sep-2014 12:45
CLIENT	FMS_DSI_NGS_049PUC	FN:67	CUSTOMER	26-Sep-2014 12:45



First Pass

MAXIS Field Log

Company: Lamont Doherty Earth Observatory

Well: Expedition 352, Site U1442A

Input DLIS Files

DEFAULT	FMS_DSI_NGS_015LUP	FN:19	PRODUCER	23-Sep-2014 13:16	3458.7 M	3309.8 M
---------	--------------------	-------	----------	-------------------	----------	----------

Output DLIS Files

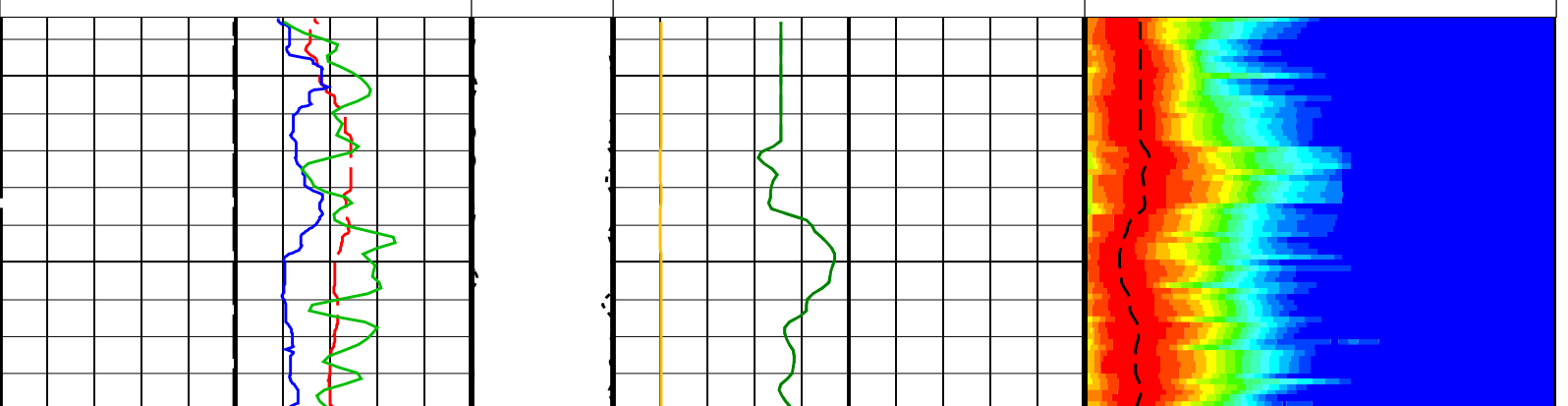
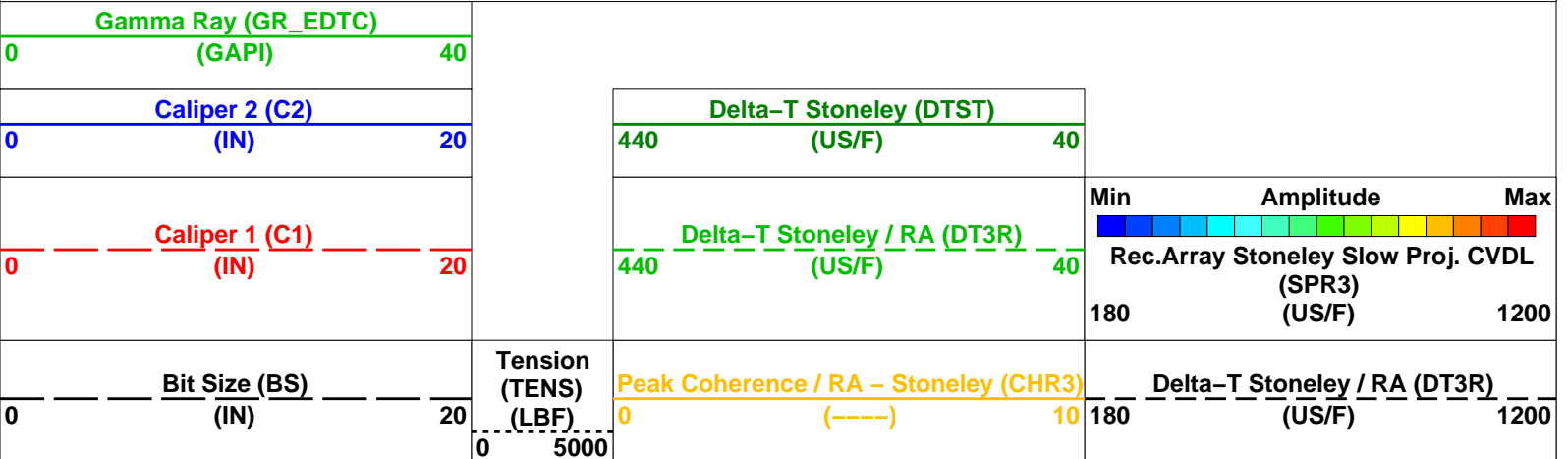
DEFAULT	FMS_DSI_NGS_053PUP	FN:74	PRODUCER	26-Sep-2014 13:00	288.0 M	138.4 M
CLIENT	FMS_DSI_NGS_053PUC	FN:75	CUSTOMER	26-Sep-2014 13:00	288.0 M	138.4 M

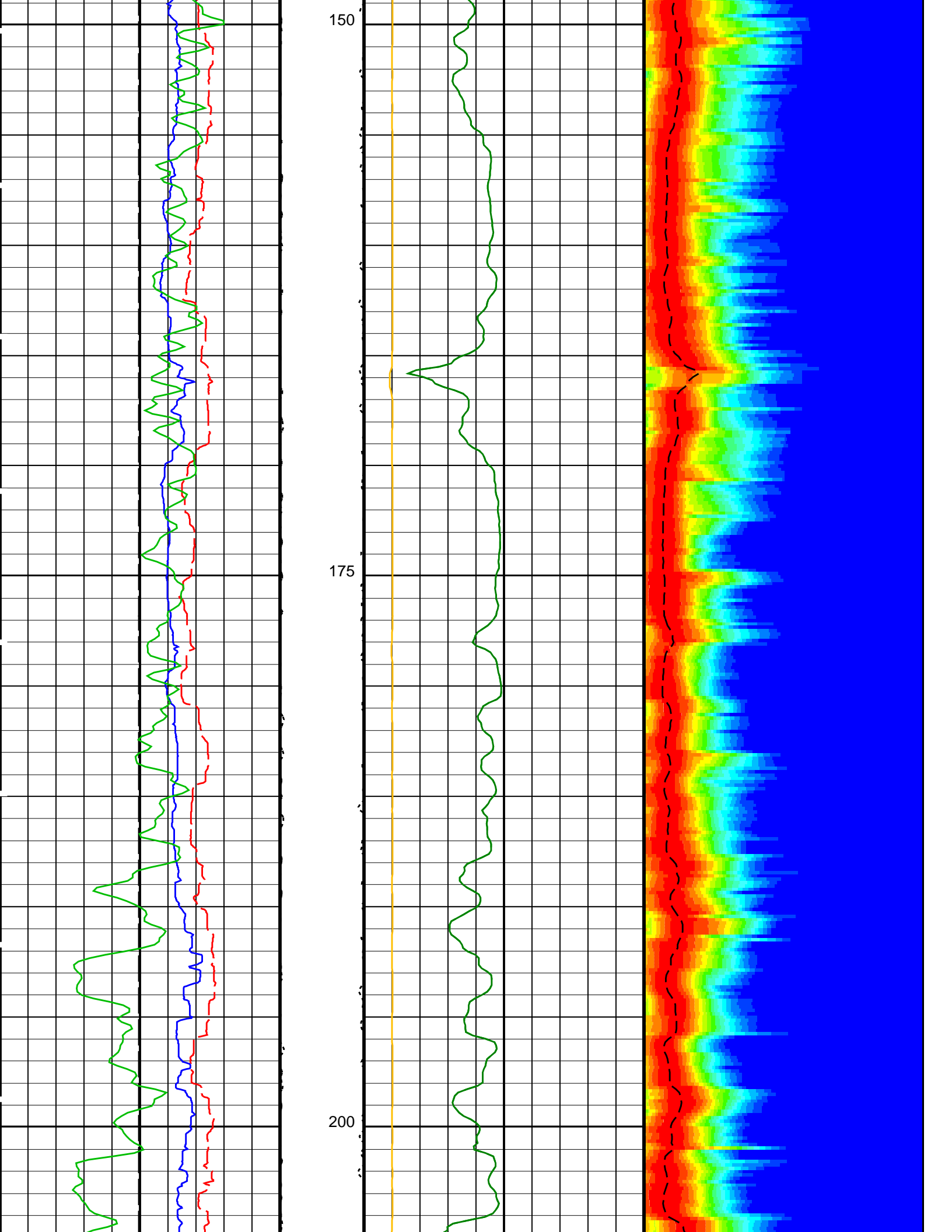
OP System Version: 19C0-187

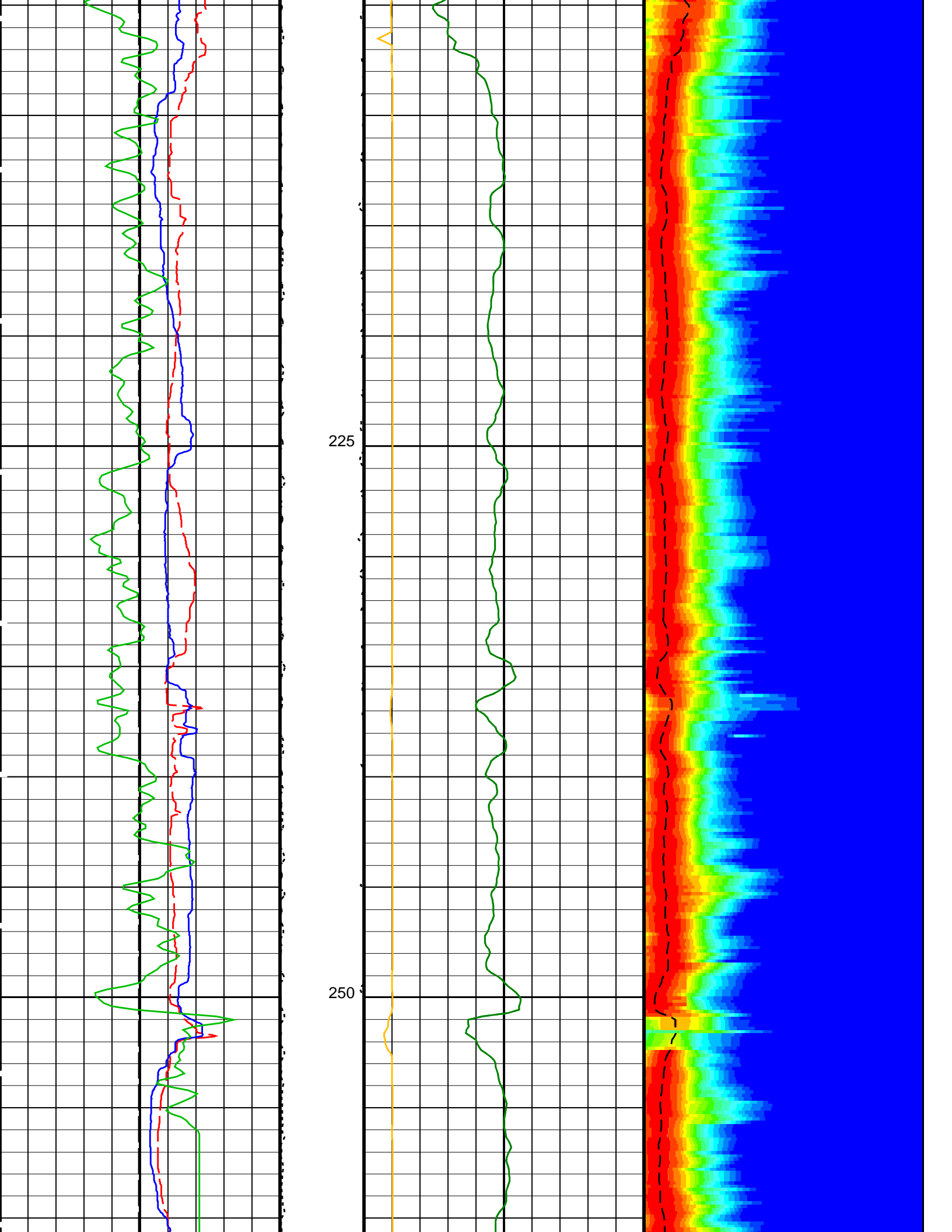
MEST-B	19C0-187	DTA-A	19C0-187
DSST-B	19C0-187	HNGC-B	19C0-187
HNGS-BA	19C0-187	EDTC-B	SKK-5169-EDTCB

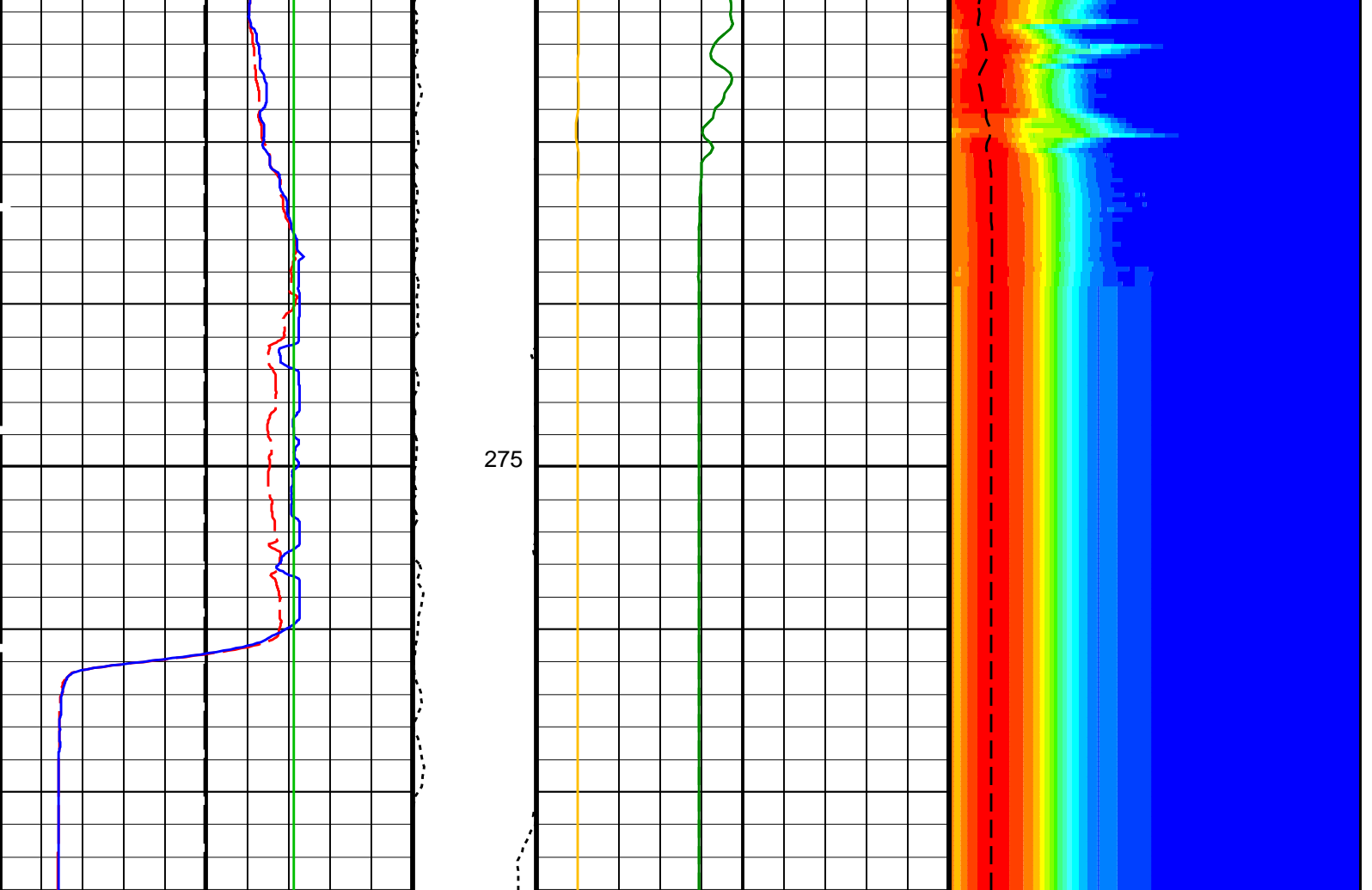
PIP SUMMARY

Time Mark Every 60 S









0	Bit Size (BS) (IN)	20	0	Tension (TENS) (LBF)	5000	0	Peak Coherence / RA - Stoneley (CHR3) (----)	10	180	Delta-T Stoneley / RA (DT3R) (US/F)	1200
0	Caliper 1 (C1) (IN)	20	440	Delta-T Stoneley / RA (DT3R) (US/F)	40	180	Rec.Array Stoneley Slow Proj. CVDL (SPR3) (US/F)	1200	Min Amplitude Max 		
0	Caliper 2 (C2) (IN)	20	440	Delta-T Stoneley (DTST) (US/F)	40	180		1200			
0	Gamma Ray (GR_EDTC) (GAPI)	40									

PIP SUMMARY

Time Mark Every 60 S

Parameters

DLIS Name	Description	Value
DSST-B: Dipole Shear Imager - B		
DDE3	Digitizing Delay 3	0 US
DDEX	Digitizing Delay X	0 US
DSI3	Digitizer Sample Interval 3	40 US
DSIX	Digitizer Sample Interval X	40 US
DTCS	Compressional Delta-T Source for DTCO Channel	PS_COMP
DWC3	Digitizer Word Count 3	512
DWCX	Digitizer Word Count X	512
MTXG	Monopole Transmitter Geometry	186 IN
NWI3	Number Waveform Items 3	8
NWIX	Number Waveform Items X	0
RX1G	Receiver 1 Geometry	294 IN
RX2G	Receiver 2 Geometry	300 IN
RX3G	Receiver 3 Geometry	306 IN
RX4G	Receiver 4 Geometry	312 IN

RX5G	Receiver 5 Geometry	318	IN
RX6G	Receiver 6 Geometry	324	IN
RX7G	Receiver 7 Geometry	330	IN
RX8G	Receiver 8 Geometry	336	IN
SAM3	DSST Sonic Acquisition Mode 3 – Monopole Mode for Stoneley	ODD	
SAMX	DSST Sonic Acquisition Mode X – Both Dipoles or Monopole Mode for Expert	OFF	
SAS3	STC Sonic Array Status – Monopole Stoneley	255	
SBO3	STC Search Band Offset – Monopole Stoneley	2000	US
SBW3	STC Search Bandwidth – Monopole Stoneley	6000	US
SFC3	STC Formation Character – Monopole Stoneley	SELECTABLE	
SFM3	STC Filter – Monopole Stoneley	B.5–1.5K	
SLL3	STC Slowness Lower Limit – Monopole Stoneley	180	US/F
SST3	STC Slowness Step – Monopole Stoneley	4	US/F
SSW3	STC Source Waveform – Monopole Stoneley	WF_SAM3	
STLL	Label Slowness Lower Limit – Monopole Stoneley	180	US/F
STUL	Label Slowness Upper Limit – Monopole Stoneley	1200	US/F
SUL3	STC Slowness Upper Limit – Monopole Stoneley	1200	US/F
SWD3	STC Slowness Width – Monopole Stoneley	40	US/F
TBF3	STC Time for Baseline Fill – Monopole Stoneley	0	US
TLL3	STC Time Lower Limit – Monopole Stoneley	620	US
TST3	STC Time Step – Monopole Stoneley	200	US
TUL3	STC Time Upper Limit – Monopole Stoneley	15800	US
TWD3	STC Time Width – Monopole Stoneley	2000	US
TWI3	STC Integration Time Window – Monopole Stoneley	1600	US
TWSX	Transmitter Waveform Select X	0	
System and Miscellaneous			
BS	Bit Size	9.875	IN
DO	Depth Offset for Playback	-3171.5	M
PP	Playback Processing	RECOMPUTE	

Format: DSST_STONELEY_VDL_COLOR Vertical Scale: 1:200 Graphics File Created: 26-Sep-2014 13:00

OP System Version: 19C0-187

MEST-B	19C0-187	DTA-A	19C0-187
DSST-B	19C0-187	HNGC-B	19C0-187
HNGS-BA	19C0-187	EDTC-B	SKK-5169-EDTCB

Input DLIS Files

DEFAULT	FMS_DSI_NGS_015LUP	FN:19	PRODUCER	23-Sep-2014 13:16	3458.7 M	3309.8 M
---------	--------------------	-------	----------	-------------------	----------	----------

Output DLIS Files

DEFAULT	FMS_DSI_NGS_053PUP	FN:74	PRODUCER	26-Sep-2014 13:00		
CLIENT	FMS_DSI_NGS_053PUC	FN:75	CUSTOMER	26-Sep-2014 13:00		

Second Pass

MAXIS Field Log

Company: Lamont Doherty Earth Observatory

Well: Expedition 352, Site U1442A

Input DLIS Files

DEFAULT	FMS_DSI_NGS_016LUP	FN:20	PRODUCER	23-Sep-2014 13:53	3458.7 M	3164.9 M
---------	--------------------	-------	----------	-------------------	----------	----------

Output DLIS Files

DEFAULT	FMS_DSI_NGS_054PUP	FN:76	PRODUCER	26-Sep-2014 13:03	288.0 M	-6.6 M
CLIENT	FMS_DSI_NGS_054PUC	FN:77	CUSTOMER	26-Sep-2014 13:03	288.0 M	-6.6 M

OP System Version: 19C0-187

MEST-B 19C0-187
 DSST-B 19C0-187
 HNGS-BA 19C0-187

DTA-A 19C0-187
 HNGC-B 19C0-187
 EDTC-B SKK-5169-EDTCB

PIP SUMMARY

Time Mark Every 60 S

Gamma Ray (GR_EDTC)
 (GAPI) 0 40

Caliper 2 (C2)
 (IN) 0 20

Caliper 1 (C1)
 (IN) 0 20

Bit Size (BS)
 (IN) 0 20

Delta-T Stoneley (DTST)
 (US/F) 440 40

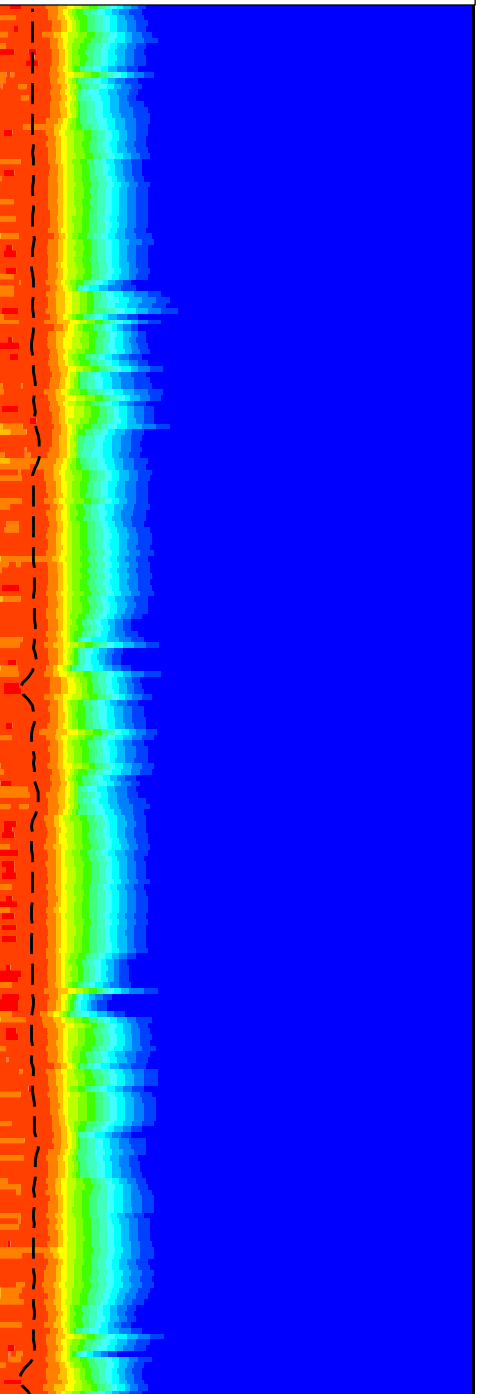
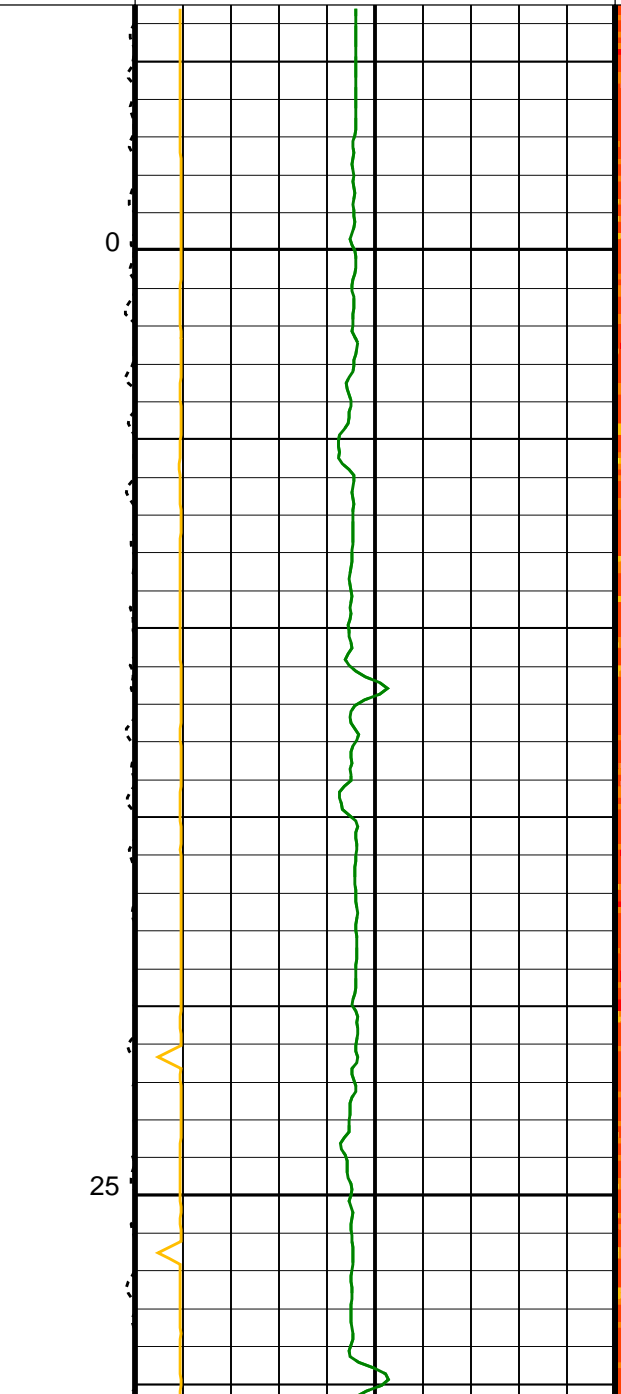
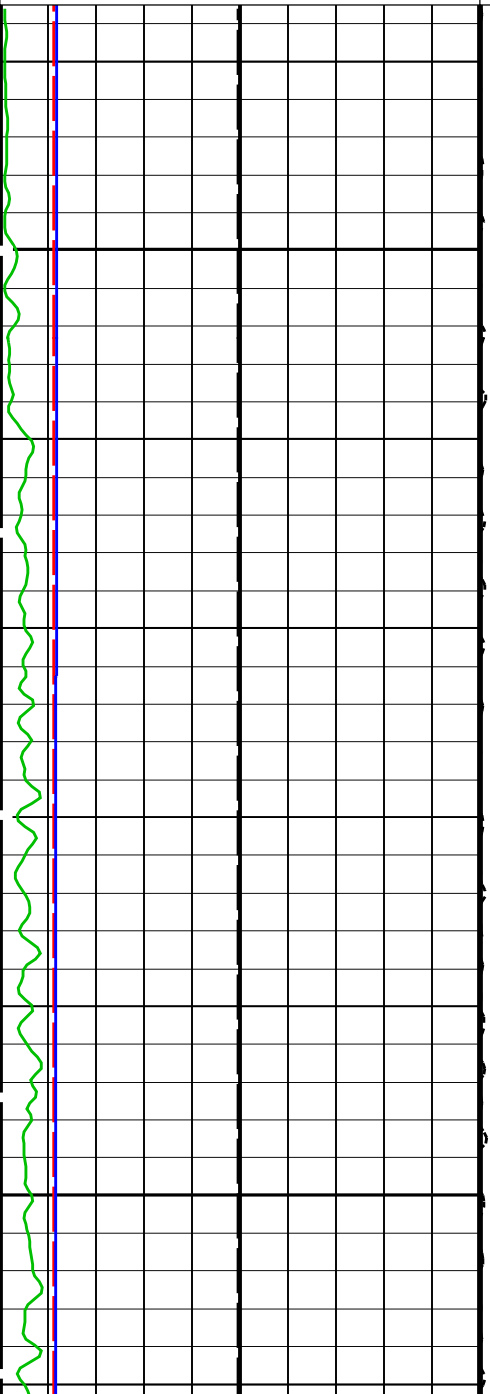
Delta-T Stoneley / RA (DT3R)
 (US/F) 440 40

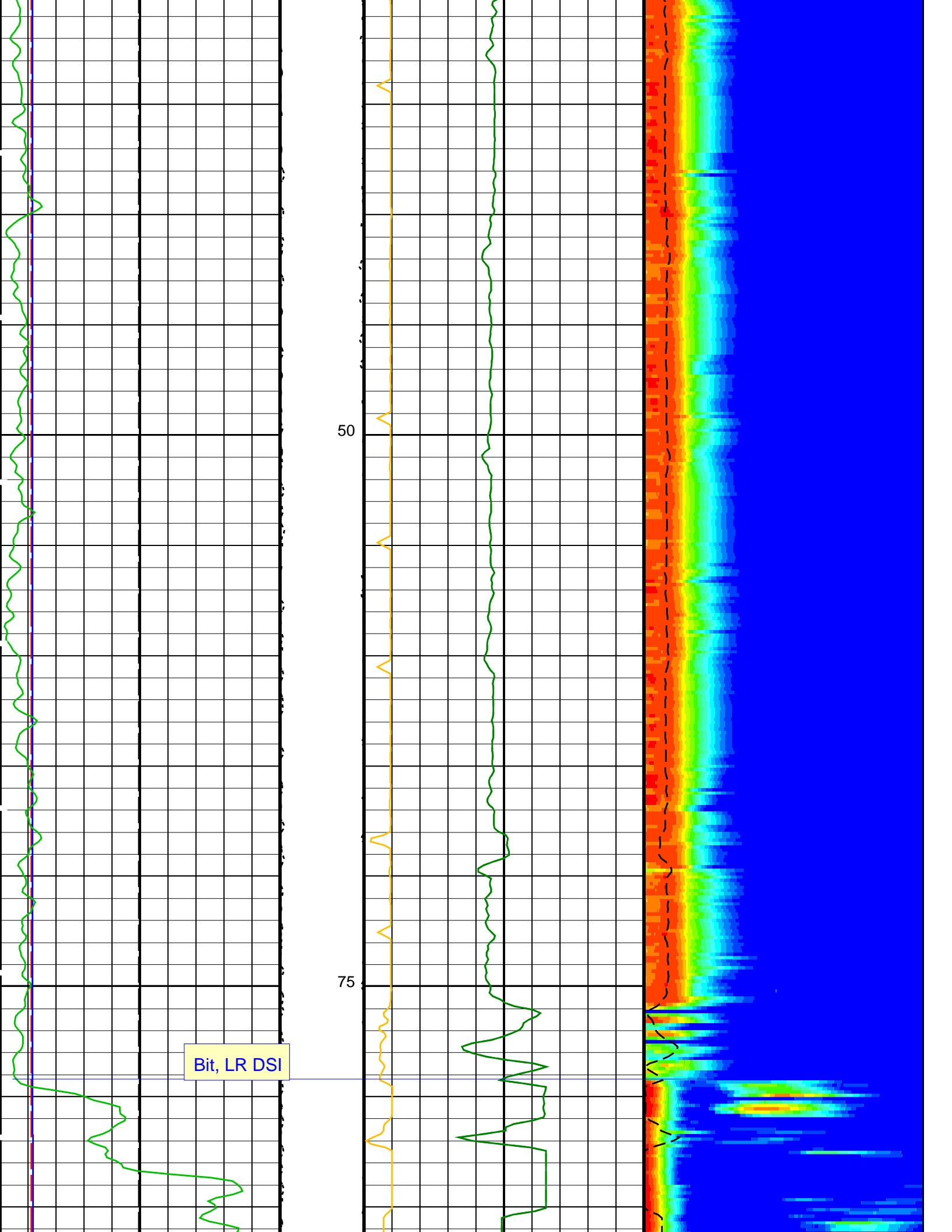
Tension (TENS)
 (LBF) 0 5000

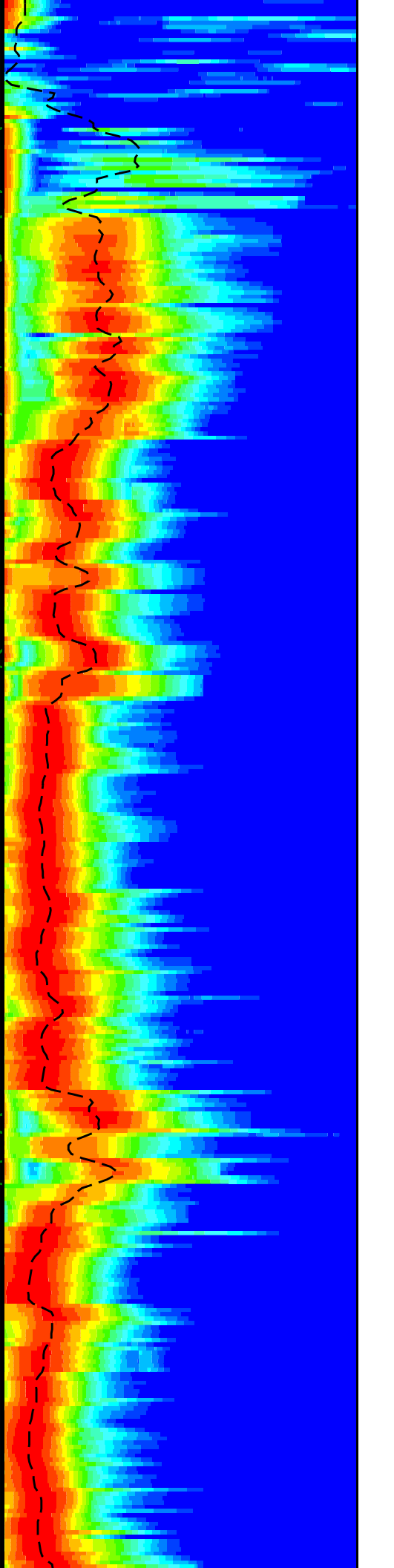
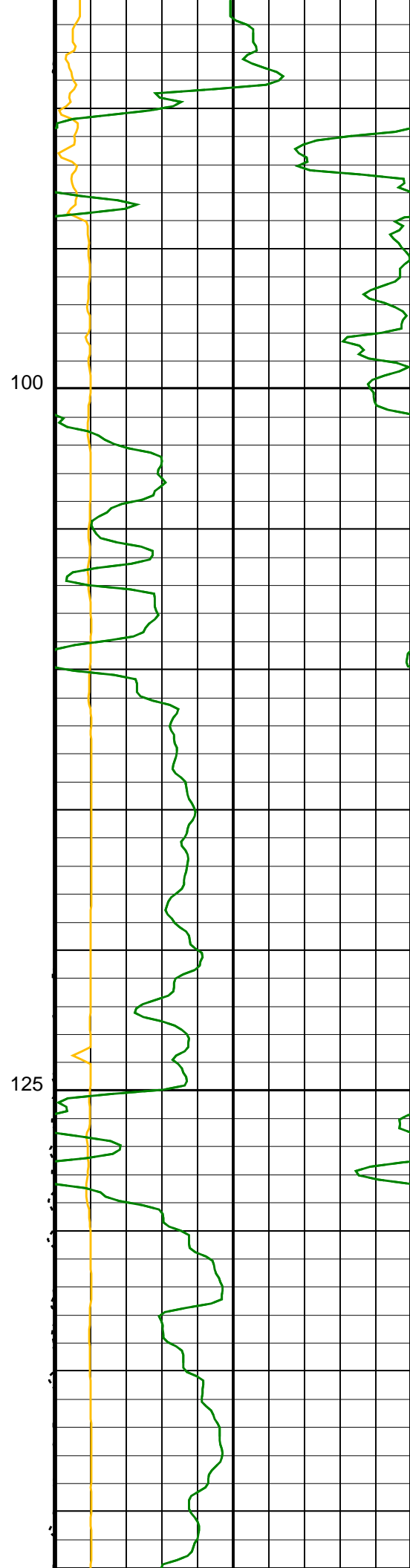
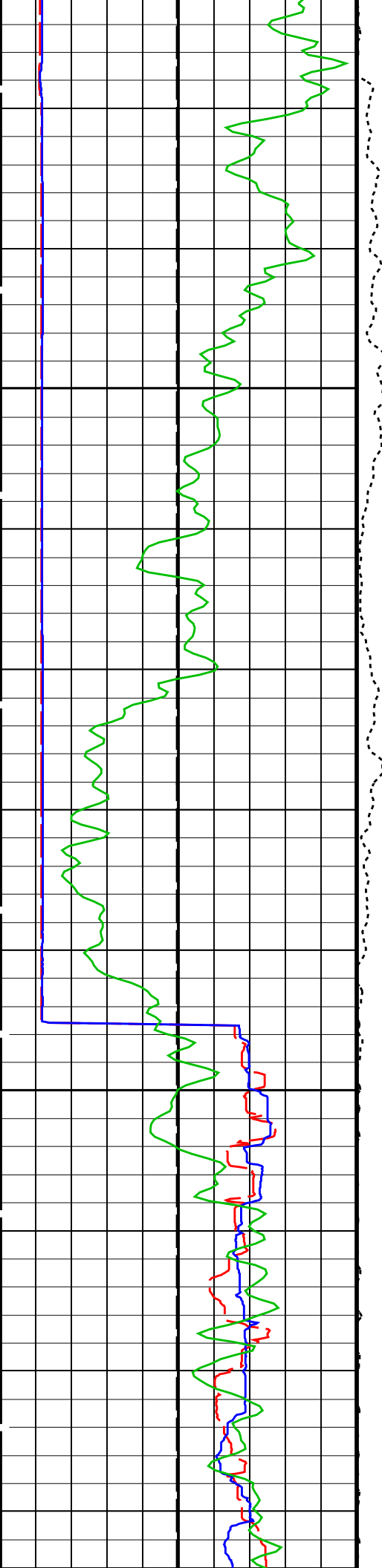
Peak Coherence / RA - Stoneley (CHR3)
 (----) 0 10

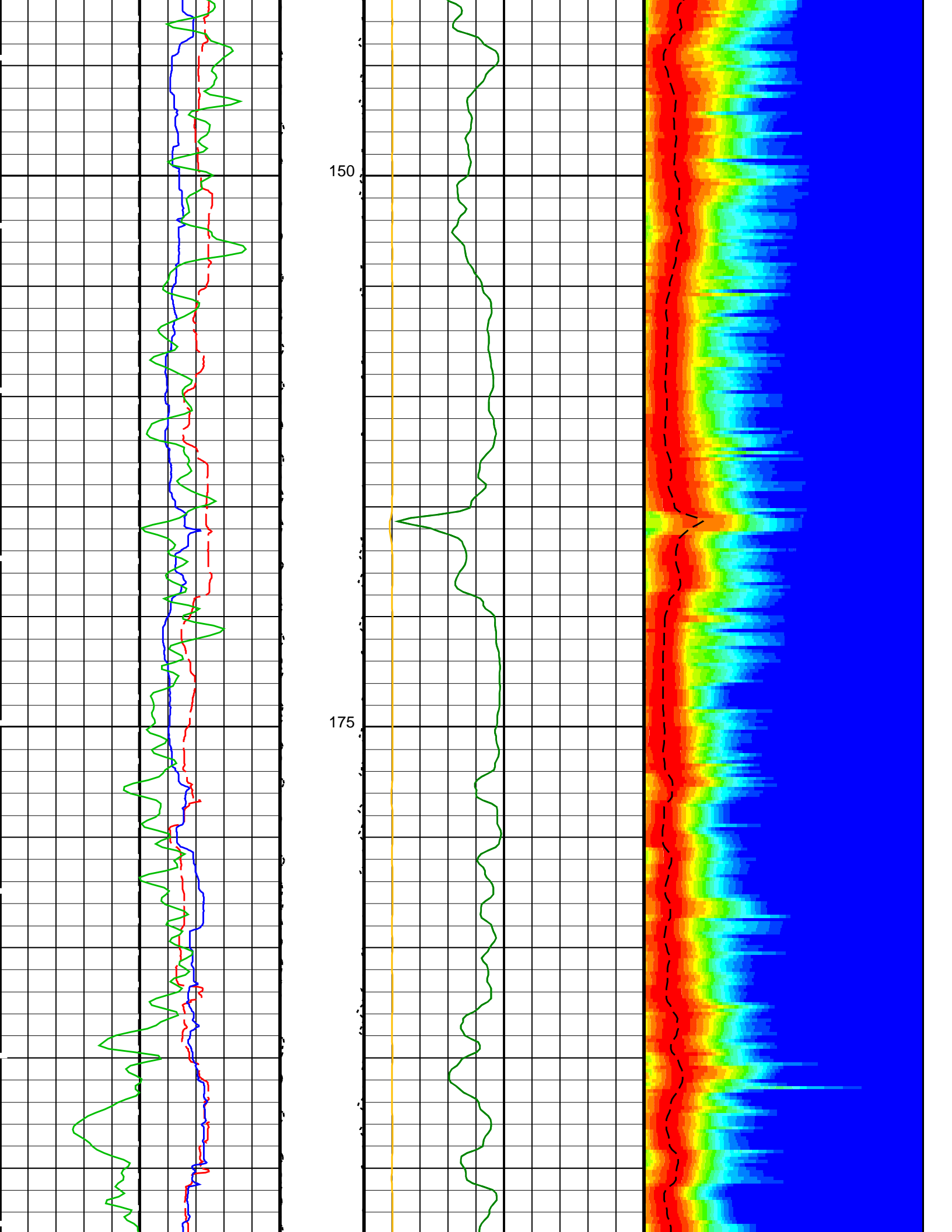
Min Amplitude Max
 Rec.Array Stoneley Slow Proj. CVDL
 (SPR3)
 (US/F) 180 1200

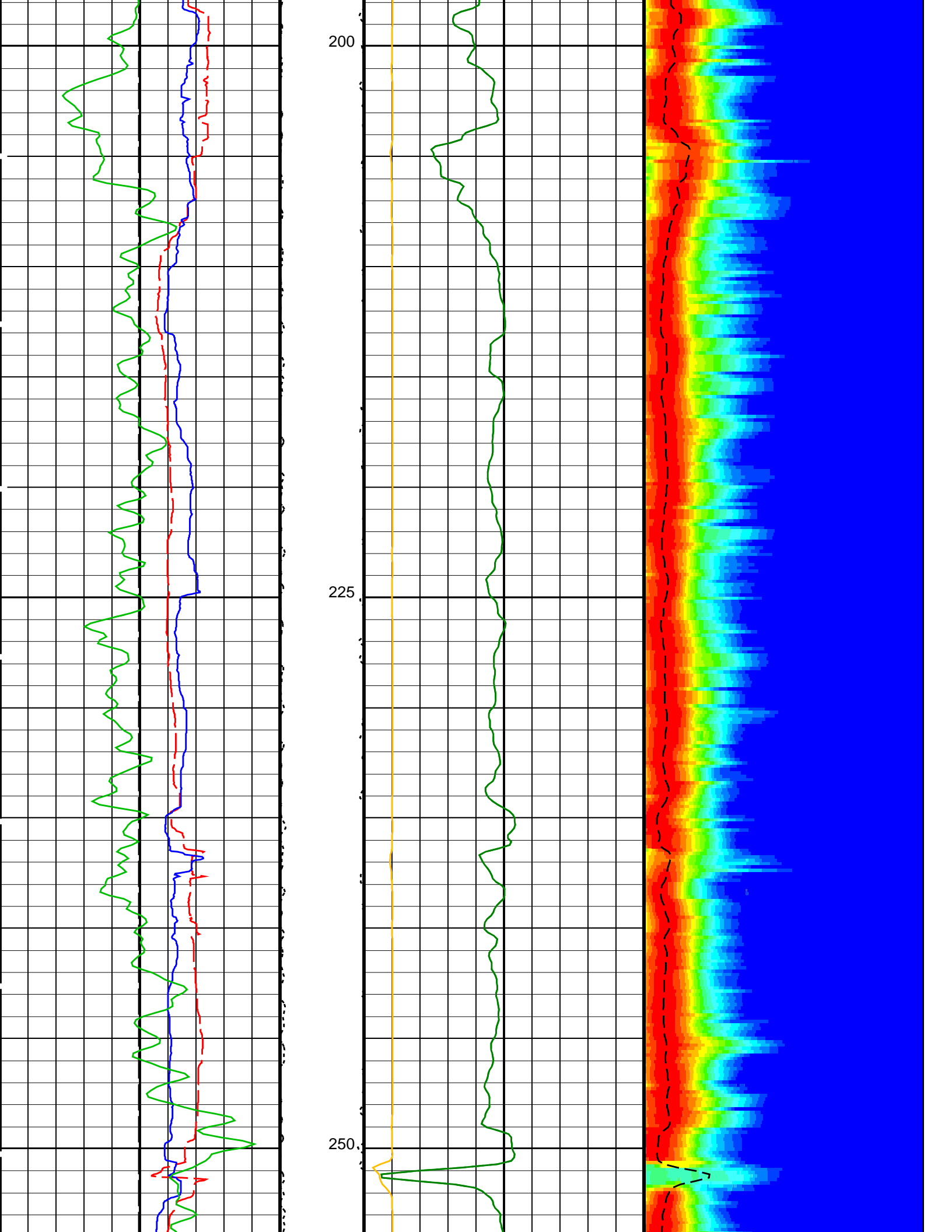
Delta-T Stoneley / RA (DT3R)
 (US/F) 180 1200

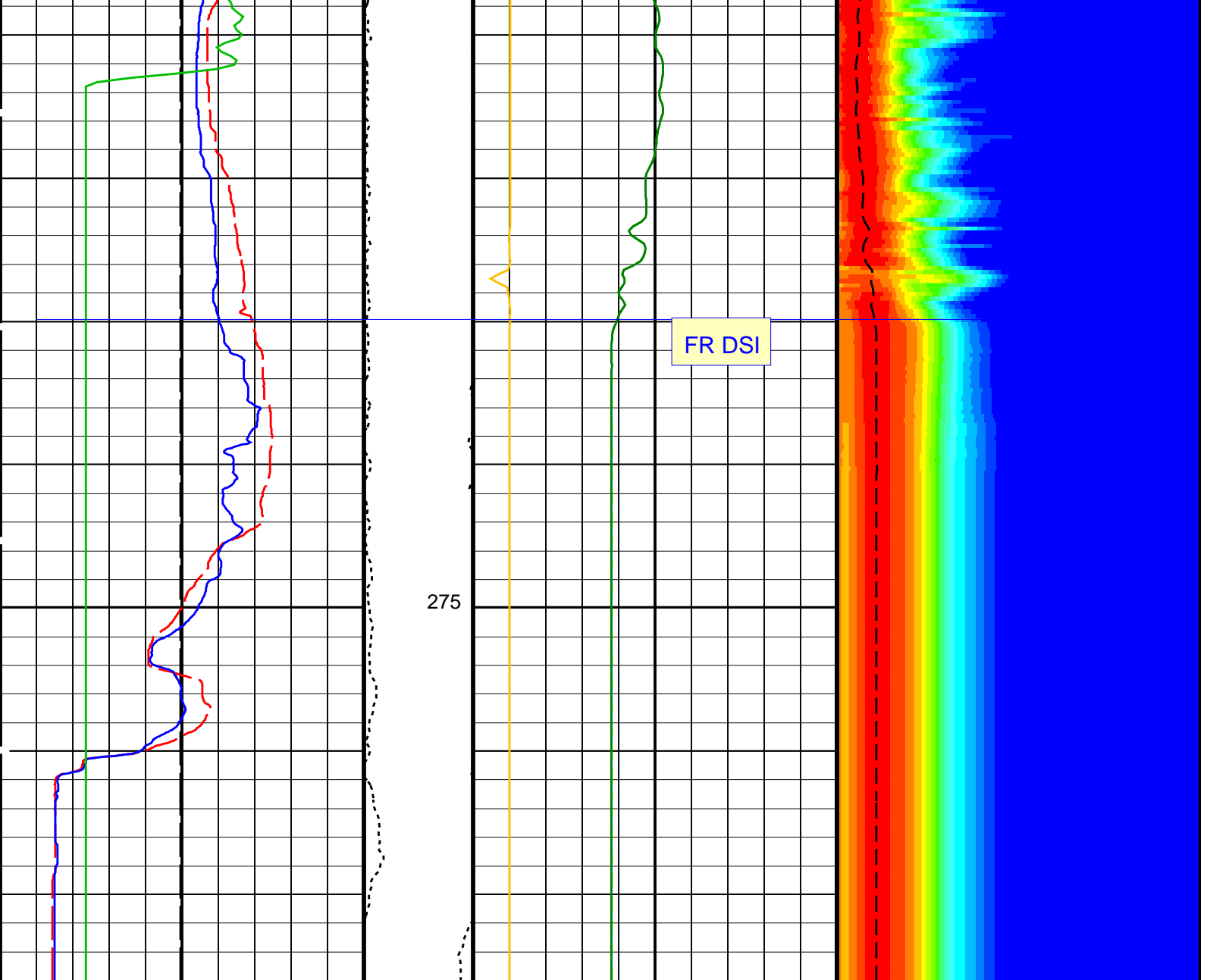












<p>Bit Size (BS) (IN) 0 20</p> <p>Caliper 1 (C1) (IN) 0 20</p> <p>Caliper 2 (C2) (IN) 0 20</p> <p>Gamma Ray (GR_EDTC) (GAPI) 0 40</p>	<p>Tension (TENS) (LBF) 0 5000</p>	<p>Peak Coherence / RA - Stoneley (CHR3) (-----) 0 10</p> <p>Delta-T Stoneley / RA (DT3R) (US/F) 440 40</p> <p>Delta-T Stoneley (DTST) (US/F) 440 40</p>	<p>Delta-T Stoneley / RA (DT3R) (US/F) 180 1200</p> <p>Min Amplitude Max Rec.Array Stoneley Slow Proj. CVDL (SPR3) (US/F) 180 1200</p>
---	---	---	--

PIP SUMMARY

Time Mark Every 60 S

Parameters

DLIS Name	Description	Value
DSST-B:	Dipole Shear Imager - B	
DDE3	Digitizing Delay 3	0 US
DDEX	Digitizing Delay X	0 US
DSI3	Digitizer Sample Interval 3	40 US
DSIX	Digitizer Sample Interval X	40 US

DTC3	Digitizer Sample Interval X	4	CC
DWC3	Digitizer Word Count 3	512	
DWCX	Digitizer Word Count X	512	
MTXG	Monopole Transmitter Geometry	186	IN
NWI3	Number Waveform Items 3	8	
NWIX	Number Waveform Items X	0	
RX1G	Receiver 1 Geometry	294	IN
RX2G	Receiver 2 Geometry	300	IN
RX3G	Receiver 3 Geometry	306	IN
RX4G	Receiver 4 Geometry	312	IN
RX5G	Receiver 5 Geometry	318	IN
RX6G	Receiver 6 Geometry	324	IN
RX7G	Receiver 7 Geometry	330	IN
RX8G	Receiver 8 Geometry	336	IN
SAM3	DSST Sonic Acquisition Mode 3 – Monopole Mode for Stoneley	ODD	
SAMX	DSST Sonic Acquisition Mode X – Both Dipoles or Monopole Mode for Expert	OFF	
SAS3	STC Sonic Array Status – Monopole Stoneley	255	
SBO3	STC Search Band Offset – Monopole Stoneley	2000	US
SBW3	STC Search Bandwidth – Monopole Stoneley	6000	US
SFC3	STC Formation Character – Monopole Stoneley	SELECTABLE	
SFM3	STC Filter – Monopole Stoneley	B.5–1.5K	
SLL3	STC Slowness Lower Limit – Monopole Stoneley	180	US/F
SST3	STC Slowness Step – Monopole Stoneley	4	US/F
SSW3	STC Source Waveform – Monopole Stoneley	WF_SAM3	
STLL	Label Slowness Lower Limit – Monopole Stoneley	180	US/F
STUL	Label Slowness Upper Limit – Monopole Stoneley	1200	US/F
SUL3	STC Slowness Upper Limit – Monopole Stoneley	1200	US/F
SWD3	STC Slowness Width – Monopole Stoneley	40	US/F
TBF3	STC Time for Baseline Fill – Monopole Stoneley	0	US
TLL3	STC Time Lower Limit – Monopole Stoneley	620	US
TST3	STC Time Step – Monopole Stoneley	200	US
TUL3	STC Time Upper Limit – Monopole Stoneley	15800	US
TWD3	STC Time Width – Monopole Stoneley	2000	US
TWI3	STC Integration Time Window – Monopole Stoneley	1600	US
TWSX	Transmitter Waveform Select X	0	
System and Miscellaneous			
BS	Bit Size	9.875	IN
DO	Depth Offset for Playback	-3171.5	M
PP	Playback Processing	RECOMPUTE	

Format: DSST_STONELEY_VDL_COLOR Vertical Scale: 1:200 Graphics File Created: 26-Sep-2014 13:03

OP System Version: 19C0-187

MEST-B	19C0-187	DTA-A	19C0-187
DSST-B	19C0-187	HNGC-B	19C0-187
HNGS-BA	19C0-187	EDTC-B	SKK-5169-EDTCB

Input DLIS Files

DEFAULT	FMS_DSI_NGS_016LUP	FN:20	PRODUCER	23-Sep-2014 13:53	3458.7 M	3164.9 M
---------	--------------------	-------	----------	-------------------	----------	----------

Output DLIS Files

DEFAULT	FMS_DSI_NGS_054PUP	FN:76	PRODUCER	26-Sep-2014 13:03
CLIENT	FMS_DSI_NGS_054PUC	FN:77	CUSTOMER	26-Sep-2014 13:03



Calibrations

MAXIS Field Log

Measurement	Nominal	Master	Before	After	Change	Limit	Units
Micro Electrical Scanner – B (Slim) Wellsite Calibration – Caliper Calibration							
Before: Calibration out of date 3-Feb-2014 19:22							
Caliper 1 Zero Measurement	12.00	N/A	11.98	N/A	N/A	N/A	IN
Caliper 2 Zero Measurement	12.00	N/A	12.05	N/A	N/A	N/A	IN
Caliper 1 Plus Measurement	15.19	N/A	15.18	N/A	N/A	N/A	IN
Caliper 2 Plus Measurement	15.19	N/A	15.38	N/A	N/A	N/A	IN
Micro Electrical Scanner – B (Slim) Wellsite Calibration – CROUZET ACCELEROMETER PROM HAS BEEN READ CORRECTLY							
Before: 23-Sep-2014 10:45							
TEMPERATURE REFERENCE :	N/A	N/A	20	N/A	N/A	N/A	DEGC
YEAR OF CALIBRATION :	N/A	N/A	99	N/A	N/A	N/A	
MONTH OF CALIBRATION :	N/A	N/A	3	N/A	N/A	N/A	
SERIAL NUMBER :	N/A	N/A	743	N/A	N/A	N/A	
Micro Electrical Scanner – B (Slim) Wellsite Calibration – CROUZET MAGNETOMETER PROM HAS BEEN READ CORRECTLY							
Before: 23-Sep-2014 10:45							
TEMPERATURE REFERENCE :	N/A	N/A	23	N/A	N/A	N/A	DEGC
YEAR OF CALIBRATION :	N/A	N/A	3	N/A	N/A	N/A	
MONTH OF CALIBRATION :	N/A	N/A	9	N/A	N/A	N/A	
SERIAL NUMBER :	N/A	N/A	507	N/A	N/A	N/A	
Hostile Natural Gamma Ray Sonde Wellsite Calibration – Detector 1 Check							
Master: 15-Jul-2014 0:16 Before: 23-Sep-2014 3:43 After: 23-Sep-2014 9:35							
Na 511 Peak Loc	40.00	39.57	39.57	39.68	0.1186	1.000	
Na 511 Peak Res	15.50	15.78	15.35	14.71	-0.6379	2.000	%
High Voltage	1150	1197	1187	1186	-0.7285	N/A	V
Na 1785 Peak Loc	142.6	142.4	141.8	142.6	0.7831	7.000	
Na 1785 Peak Res	8.500	9.334	8.462	9.740	1.278	2.000	%
Temperature	15.50	37.42	35.70	33.88	-1.827	N/A	DEGC
Na Count Rate	45.00	10.91	9.927	9.941	0.01461	8.000	CPS
Hostile Natural Gamma Ray Sonde Wellsite Calibration – Detector 2 Check							
Master: 15-Jul-2014 0:16 Before: 23-Sep-2014 3:43 After: 23-Sep-2014 9:35							
Na 511 Peak Loc	40.00	39.46	39.49	39.67	0.1857	1.000	
Na 511 Peak Res	15.50	16.20	15.66	15.36	-0.2991	2.000	%
High Voltage	1150	1129	1121	1132	10.84	N/A	V
Na 1785 Peak Loc	142.6	141.8	140.7	142.8	2.092	7.000	
Na 1785 Peak Res	8.500	10.06	8.501	8.168	-0.3334	2.000	%
Temperature	15.50	38.37	35.89	35.35	-0.5446	N/A	DEGC
Na Count Rate	45.00	11.54	10.34	10.12	-0.2134	8.000	CPS
Hostile Natural Gamma Ray Sonde Wellsite Calibration – Ratio Of Detector 1 To Detector 2							
Master: 15-Jul-2014 0:16 Before: 23-Sep-2014 3:43 After: 23-Sep-2014 9:35							
Coincidence Count Rate Ratio	1.000	0.9495	0.9661	0.9843	0.01826	0.05000	
Enhanced DTS Cartridge Wellsite Calibration – EDTC Accelerometer Calibration							
Before: 23-Sep-2014 3:45							
EDTC Z-Axis Acceleration	9.810	N/A	9.750	N/A	N/A	N/A	M/S2
Enhanced DTS Cartridge Wellsite Calibration – Detector Calibration							
Before: 23-Sep-2014 3:36 After: 23-Sep-2014 9:32							
Gamma Ray (Jig – Bkg)	160.3	N/A	160.3	155.0	-5.277	14.57	GAPI
Gamma Ray (Calibrated)	165.0	N/A	165.0	159.6	-5.432	15.00	GAPI

Micro Electrical Scanner – B (Slim) / Equipment Identification

Primary Equipment:

MEST Sonde – B	MEDS – B	724
MEST Preamplifier Cartridge – AB	MEPC – AB	807
GPIT Cartridge – AC	GPIC – AC	840
MEST Acquisition Cartridge – A	MEAC – A	875

Auxiliary Equipment:

MEST-B Preamplifier Cartridge Housing	MEPH – A	702
MEST Acquisition Cartridge Housing (Slim)	MEAH – B	769

Hostile Natural Gamma Ray Cartridge – B / Equipment Identification

Primary Equipment:

HNGC Cartridge	HNGC – B	300
----------------	----------	-----

Auxiliary Equipment:

Hostile Natural Gamma Ray Sonde / Equipment Identification

Primary Equipment:
HNGS Sonde

HNGS - BA 194

Auxiliary Equipment:
HNGS Sonde Housing
Gamma Source Radioactive

HNSH - BA 205
GSR - U 616008

Hostile Natural Gamma Ray Sonde Wellsite Calibration

Detector 1 Check

Phase	Na 511 Peak Loc	Value	Phase	Na 511 Peak Res %	Value	Phase	High Voltage V	Value
Master		39.57	Master		15.78	Master		1197
Before		39.57	Before		15.35	Before		1187
After		39.68	After		14.71	After		1186
	37.50 (Minimum) 40.00 (Nominal) 43.50 (Maximum)			12.00 (Minimum) 15.50 (Nominal) 19.00 (Maximum)			900.0 (Minimum) 1150 (Nominal) 1600 (Maximum)	
Phase	Na 1785 Peak Loc	Value	Phase	Na 1785 Peak Res %	Value	Phase	Temperature DEGC	Value
Master		142.4	Master		9.334	Master		37.42
Before		141.8	Before		8.462	Before		35.70
After		142.6	After		9.740	After		33.88
	135.0 (Minimum) 142.6 (Nominal) 150.3 (Maximum)			7.000 (Minimum) 8.500 (Nominal) 11.00 (Maximum)			-28.89 (Minimum) 15.50 (Nominal) 60.00 (Maximum)	
Phase	Na Count Rate CPS	Value						
Master		10.91						
Before		9.927						
After		9.941						
	10.00 (Minimum) 45.00 (Nominal) 100.0 (Maximum)							
Master: 15-Jul-2014 0:16			Before: 23-Sep-2014 3:43			After: 23-Sep-2014 9:35		

Hostile Natural Gamma Ray Sonde Wellsite Calibration

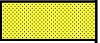

Detector 2 Check

Phase	Na 511 Peak Loc	Value	Phase	Na 511 Peak Res %	Value	Phase	High Voltage V	Value
Master		39.46	Master		16.20	Master		1129
Before		39.49	Before		15.66	Before		1121
After		39.67	After		15.36	After		1132
	37.50 (Minimum) 40.00 (Nominal) 43.50 (Maximum)			12.00 (Minimum) 15.50 (Nominal) 19.00 (Maximum)			900.0 (Minimum) 1150 (Nominal) 1600 (Maximum)	
Phase	Na 1785 Peak Loc	Value	Phase	Na 1785 Peak Res %	Value	Phase	Temperature DEGC	Value
Master		141.8	Master		10.06	Master		38.37
Before		140.7	Before		8.501	Before		35.89
After		142.8	After		8.168	After		35.35
	135.0 (Minimum) 142.6 (Nominal) 150.3 (Maximum)			7.000 (Minimum) 8.500 (Nominal) 11.00 (Maximum)			-28.89 (Minimum) 15.50 (Nominal) 60.00 (Maximum)	
Phase	Na Count Rate CPS	Value						
Master		11.54						
Before		10.34						
After		10.12						
	10.00 (Minimum) 45.00 (Nominal) 100.0 (Maximum)							
Master: 15-Jul-2014 0:16			Before: 23-Sep-2014 3:43			After: 23-Sep-2014 9:35		

Hostile Natural Gamma Ray Sonde Wellsite Calibration


Ratio Of Detector 1 To Detector 2

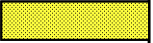





Phase	Coincidence Count Rate Ratio	Value

Master	EXCEEDS LIMIT	0.9495
Before		0.9661
After		0.9843
	0.9500 (Minimum) 1.000 (Nominal) 1.050 (Maximum)	
Master: 15-Jul-2014 0:16		
Before: 23-Sep-2014 3:43		
After: 23-Sep-2014 9:35		

Enhanced DTS Cartridge / Equipment Identification

Primary Equipment:		
EDTC Gamma Ray Detector	EDTG - A/B	8305
Enhanced DTS Cartridge	EDTC - B	8317
Auxiliary Equipment:		
EDTC Housing	EDTH - B	8303

Enhanced DTS Cartridge Wellsite Calibration		
EDTC Accelerometer Calibration		
Phase	EDTC Z-Axis Acceleration M/S2	Value
Before		9.750
	9.610 (Minimum) 9.810 (Nominal) 10.01 (Maximum)	
Before: 23-Sep-2014 3:45		

Enhanced DTS Cartridge Wellsite Calibration									
Detector Calibration									
Phase	Gamma Ray Background GAPI	Value	Phase	Gamma Ray (Jig - Bkg) GAPI	Value	Phase	Gamma Ray (Calibrated) GAPI	Value	
Before		1.756	Before		160.3	Before		165.0	
After		7.977	After		155.0	After		159.6	
	0 (Minimum) 30.00 (Nominal) 120.0 (Maximum)			145.7 (Minimum) 160.3 (Nominal) 174.9 (Maximum)			150.0 (Minimum) 165.0 (Nominal) 180.0 (Maximum)		
Before: 23-Sep-2014 3:36			After: 23-Sep-2014 9:32						

Company: **Lamont Doherty Earth Observatory**

Schlumberger

Well: **Expedition 352, Site U1442A**

Field: **IBM-3 Forearc**

Rig: **JOIDES Resolution**

Country:

DSI Dipole Sonic Imager
Stoneley