

Input DLIS Files

DEFAULT MSS_LDEO_HRLA_LDL_011LDP FN:17 PRODUCER 06-Jan-2015 07:39 2416.3 M 2958.4 M

Output DLIS Files

DEFAULT MSS_LDEO_HRLA_LDL_045PDP FN:65 PRODUCER 07-Jan-2015 04:46

OP System Version: 19C0-187

MSS_LDEO-A	19C0-187	HRLT-B	19C0-187
HLDS	19C0-187	LDSC-B	19C0-187
APS-C	19C0-187	HNGC-B	19C0-187
HNGS-BA	19C0-187	EDTC-B	SKK-5169-EDTCB
BSP	19C0-187		

Format: TripleCombo Vertical Scale: 1:200 Graphics File Created: 07-Jan-2015 04:46

Parameters

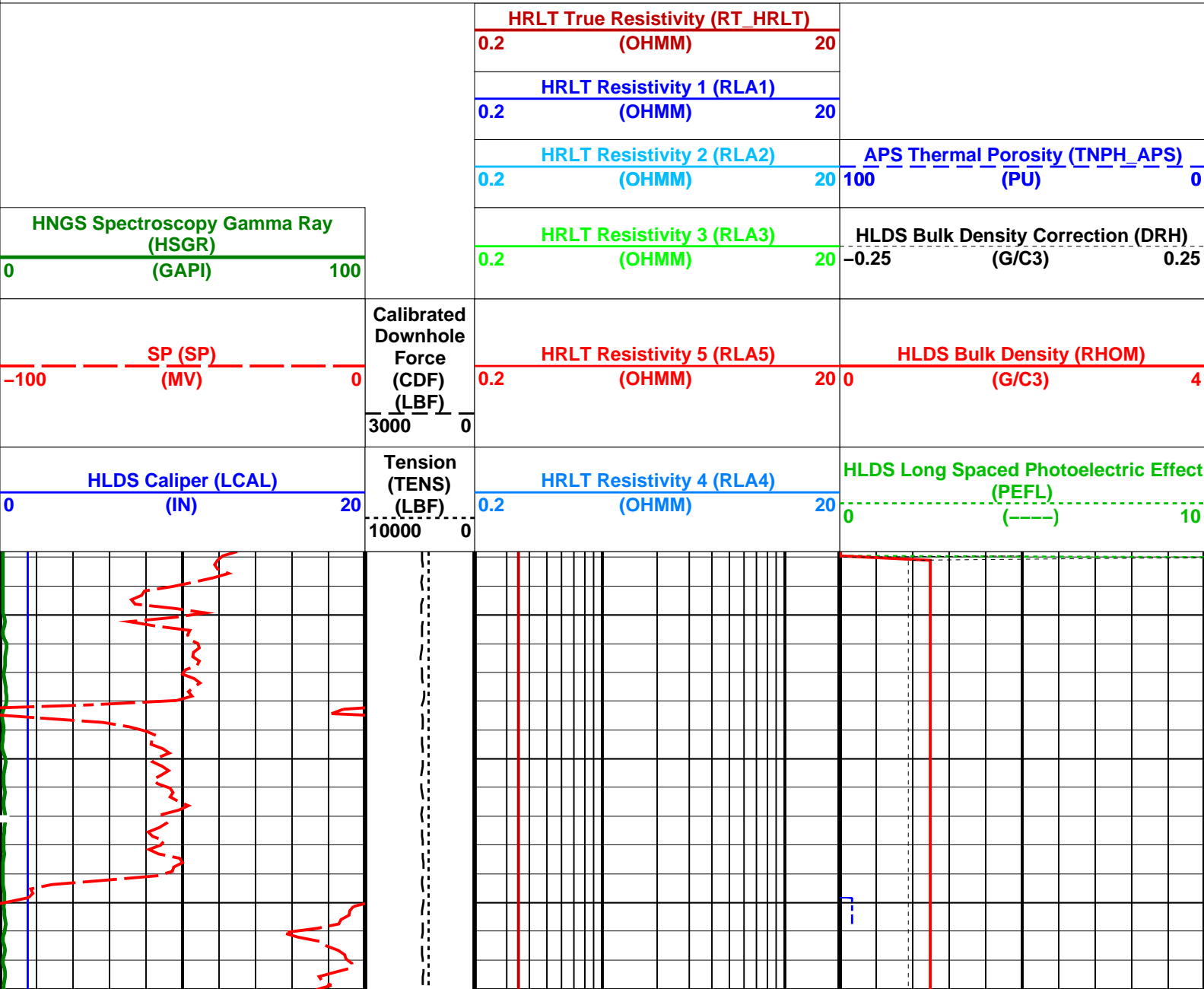
DLIS Name	Description	Value	
HRLT-B: High Resolution Laterolog Array - B			
BHS	Borehole Status	OPEN	
BHT	Bottom Hole Temperature (used in calculations)	21	DEGC
CALSTAT	HRLTB Calibration Status	SHALLOW_DONE	
CALTEMP	HRLTB Calibration Temperature	19.969	DEGC
FREQ0	HRLT Frequency Index for Mode 0	32	
FREQ1	HRLT Frequency Index for Mode 1	128	
FREQ2	HRLT Frequency Index for Mode 2	104	
FREQ3	HRLT Frequency Index for Mode 3	86	
FREQ4	HRLT Frequency Index for Mode 4	56	
FREQ5	HRLT Frequency Index for Mode 5	44	
FREQ6	HRLT Frequency Index for Mode 6	116	
GCSE	Generalized Caliper Selection	BS	
GDEV	Average Angular Deviation of Borehole from Normal	0	DEG
GGRD	Geothermal Gradient	0.018227	DC/M
GRSE	Generalized Mud Resistivity Selection	CHART_GEN_9	
GTSE	Generalized Temperature Selection	LINEAR_ESTIMATE	
ISSBAR	Barite Mud Switch	BARITE	
KFAC_HRLT	HRLT K Factor Option	SONDE	
LOOPCOEF_S	HRLT Loop Coefficient for Shallow Modes	LOW	
LOOPMOD0	HRLT Mode 0 Loop Mode	OFF	
LOOPMOD1	HRLT Mode 1 Loop Mode	OFF	
LOOPMOD2	HRLT Mode 2 Loop Mode	OFF	
LOOPMOD3	HRLT Mode 3 Loop Mode	OFF	
LOOPMOD4	HRLT Mode 4 Loop Mode	OFF	
LOOPMOD5	HRLT Mode 5 Loop Mode	OFF	
LOOPMOD6	HRLT Mode 6 Loop Mode	OFF	
MATR	Rock Matrix for Neutron Porosity Corrections	LIMESTONE	
PROGINV	Inversion Selection	ON	
PROCMFL	Inversion Micro-Resistivity Selection	NO_EXTERNAL_RXO	
PROCMFO	Mechanical Standoff Fin Size	0	IN
PROCRM	Processing Mud Resistivity Select	HRLT_Compute	
PROCSPO	Sonde Position	Centered	
SHT	Surface Hole Temperature	20	DEGC
HLDS: Hostile Litho-Density Sonde			
CLCL	HLDS LS Control Loop Controller Mode	AUTO_DEFAULT	
CLCS	HLDS SS Control Loop Controller Mode	AUTO_DEFAULT	
CLLS	HLDS Mode Loop Long Spacing	AUTO	
CLSS	HLDS Mode Loop Short Spacing	AUTO	
DHC	Density Hole Correction	BS	
DPPM	Density Porosity Processing Mode	HIRS	
FD	Fluid Density	1	G/C3
LATC	HLDS Activation Correction	ON	
LLDL	HLDS LS Low Level Discriminator DAC	14000	
LLDS	HLDS SS Low Level Discriminator DAC	14000	
LLML	HLDS LS Low Level Discriminator Mode	AUTO	
LLMS	HLDS SS Low Level Discriminator Mode	AUTO	
MDEN	Matrix Density	2.6	G/C3
PHVL	HLDS Long Spacing High Voltage Setting	1000	V
PHVS	HLDS Short Spacing High Voltage Setting	1000	V
PSDL	HLDS LS Pulse Shape Compensation DAC	30000	
PSDS	HLDS SS Pulse Shape Compensation DAC	30000	
PSML	HLDS LS Pulse Shape Compensation Mode	AUTO	
PSMS	HLDS SS Pulse Shape Compensation Mode	AUTO	
APS-C: Accelerator-Porosity Tool			
	APS Software Version	0	

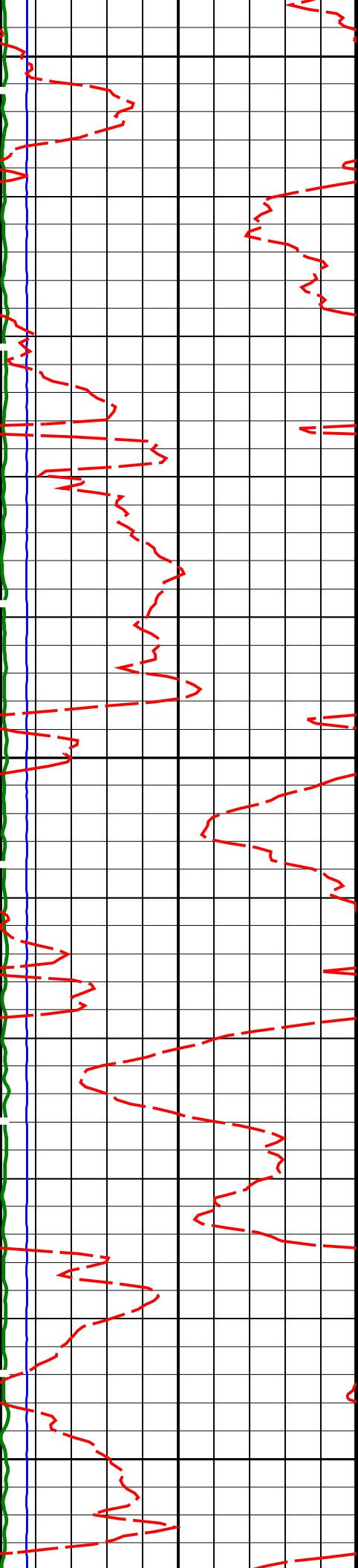
AASD	APS Thermal and Array Detectors High Voltage Setting	1961.18	V
ADSO	APS Array Detectors Data Source Switch	Both	
AFSD	APS Far Detector High Voltage Setting	2076.53	V
AHCS	APS Holesize Correction Source	BS	
AHSS	APS Holesize Correction Switch	ON	
AMTY	APS Environmental Corrections Mud Type	WaterBaseBarite	
ANSD	APS Near Detector High Voltage Setting	1731.96	V
ASOS	APS Standoff Correction Switch	ON	
ATSS	APS Temperature-Pressure-Salinity Correction Switch	ON	
BHFL_APS	APS TNPH Borehole Fluid Type	WATER	
BHS	Borehole Status	OPEN	
BHT	Bottom Hole Temperature (used in calculations)	21	DEGC
BSCO_APS	APS TNPH Borehole Salinity Correction Option	YES	
DPPM	Density Porosity Processing Mode	HIRS	
DSCO_APS	APS TNPH Density Source Correction Option	MEASURED	
FSAL	Formation Salinity	-50000	PPM
FSCO_APS	APS TNPH Formation Salinity Correction Option	NO	
GCSE	Generalized Caliper Selection	BS	
GDEV	Average Angular Deviation of Borehole from Normal	0	DEG
GGRD	Geothermal Gradient	0.018227	DC/M
GRSE	Generalized Mud Resistivity Selection	CHART_GEN_9	
GTSE	Generalized Temperature Selection	LINEAR_ESTIMATE	
HSCO_APS	APS TNPH Hole Size Correction Option	YES	
ISSBAR	Barite Mud Switch	BARITE	
MATR	Rock Matrix for Neutron Porosity Corrections	LIMESTONE	
MCCO_APS	APS TNPH Mud Cake Correction Option	YES	
MCOR_APS	APS TNPH Mud Correction	BARI	
MWCO_APS	APS TNPH Mud Weight Correction Option	YES	
NARC	APS Near/Array Calibration Ratio	1.06686	
NFRC	APS Near/Far Calibration Ratio	0.887429	
PTCO_APS	APS TNPH Pressure/Temperature Correction Option	YES	
SHT	Surface Hole Temperature	20	DEGC
TNCO_APS	APS TNPH Computation Option	YES	
HNGBS-BA: Hostile Natural Gamma Ray Sonde			
BAR1	HNGBS Detector 1 Barite Constant	1	
BAR2	HNGBS Detector 2 Barite Constant	1	
BHK	HNGBS Borehole Potassium Correction Concentration	0	
BHS	Borehole Status	OPEN	
BHT	Bottom Hole Temperature (used in calculations)	21	DEGC
CSD1	Inner Casing Outer Diameter	0	IN
CSD2	Outer Casing Outer Diameter	0	IN
CSW1	Inner Casing Weight	0	LB/F
CSW2	Outer Casing Weight	0	LB/F
DBCC	HNGBS Barite Constant Correction Flag	NONE	
GCSE	Generalized Caliper Selection	BS	
GDEV	Average Angular Deviation of Borehole from Normal	0	DEG
GGRD	Geothermal Gradient	0.018227	DC/M
GRSE	Generalized Mud Resistivity Selection	CHART_GEN_9	
GTSE	Generalized Temperature Selection	LINEAR_ESTIMATE	
H1P	HNGBS Detector 1 Allow/Disallow In Processing	ALLOW	
H2P	HNGBS Detector 2 Allow/Disallow In Processing	ALLOW	
HABK	HNGBS Borehole Potassium Running Average	-0.0010702	
HALF	HNGBS Alpha Filter Length	60	IN
HCRB	HNGBS Apply Borehole Potassium Correction	NONE	
HMWM	Mud Weighting Material	BARI	
HNPE	HNGBS Processing Enable	YES	
ISSBAR	Barite Mud Switch	BARITE	
MATR	Rock Matrix for Neutron Porosity Corrections	LIMESTONE	
S1BI	HNGBS Detector 1 Calibration Bismuth Count Rate	1.3	CPS
S2BI	HNGBS Detector 2 Calibration Bismuth Count Rate	1.3	CPS
SGRC	HNGBS Standard Gamma-Ray Correction Flag	YES	
SHT	Surface Hole Temperature	20	DEGC
TPOS	Tool Position	ECCE	
VBA1	HNGBS Detector 1 Variable Barite Factor Running Average	0.962626	
VBA2	HNGBS Detector 2 Variable Barite Factor Running Average	0.973172	
EDTC-B: Enhanced DTS Cartridge			
BHFL	Borehole Fluid Type	WATER	
BHS	Borehole Status	OPEN	
BHT	Bottom Hole Temperature (used in calculations)	21	DEGC
BSCO	Borehole Salinity Correction Option	NO	
CCCO	Casing & Cement Thickness Correction Option	NO	
DPPM	Density Porosity Processing Mode	HIRS	
FSAL	Formation Salinity	-50000	PPM
FSCO	Formation Salinity Correction Option	NO	
GCSE	Generalized Caliper Selection	BS	
GDEV	Average Angular Deviation of Borehole from Normal	0	DEG
GGRD	Geothermal Gradient	0.018227	DC/M
GRSE	Generalized Mud Resistivity Selection	CHART_GEN_9	
GTSE	Generalized Temperature Selection	LINEAR_ESTIMATE	
HSCO	Hole Size Correction Option	YES	
ISSBAR	Barite Mud Switch	BARITE	
ISSBAR_EDTC	Nuclear Mud Type	BARITE	
MATR	Rock Matrix for Neutron Porosity Corrections	LIMESTONE	
MCCO	Mud Cake Correction Option	NO	
MCOR	Mud Correction	NATU	

MWCO	Mud Weight Correction Option	NO	
PTCO	Pressure/Temperature Correction Option	NO	
SDAT	Standoff Data Source	SOCN	
SHT	Surface Hole Temperature	20	DEGC
SOCN	Standoff Distance	0.5	IN
SOCO	Standoff Correction Option	NO	
TPOS_EDTC	EDTC Tool Centered/Eccentered	Eccentered	
U-ETELM_EDTS	Telemetry Mode for eWAFE	Standard_EDTS	
U-TELM_EDTS	Telemetry Mode for WAFE	Standard_EDTS	
BSP: Bridle SP			
SPNV	SP Next Value	0	MV
System and Miscellaneous			
ALDTPCHAN	Name of alternate depth channel	SpeedCorrectedDepth	
BS	Bit Size	11.438	IN
BSAL	Borehole Salinity	-50000.00	PPM
CSIZ	Current Casing Size	5.500	IN
CWEI	Casing Weight	168.00	LB/F
DFD	Drilling Fluid Density	1.20	G/C3
DO	Depth Offset for Playback	-2508.5	M
FLEV	Fluid Level	-50000.00	M
MST	Mud Sample Temperature	-50000.00	DEGC
PBVSADP	Use alternate depth channel for playback	NO	
PP	Playback Processing	NORMAL	
RMFS	Resistivity of Mud Filtrate Sample	-50000.0000	OHMM
RW	Resistivity of Connate Water	1.0000	OHMM
TD	Total Depth	3190	M
TDD	Total Depth - Driller	3190.00	M
TDL	Total Depth - Logger	3189.00	M
TWS	Temperature of Connate Water Sample	37.78	DEGC

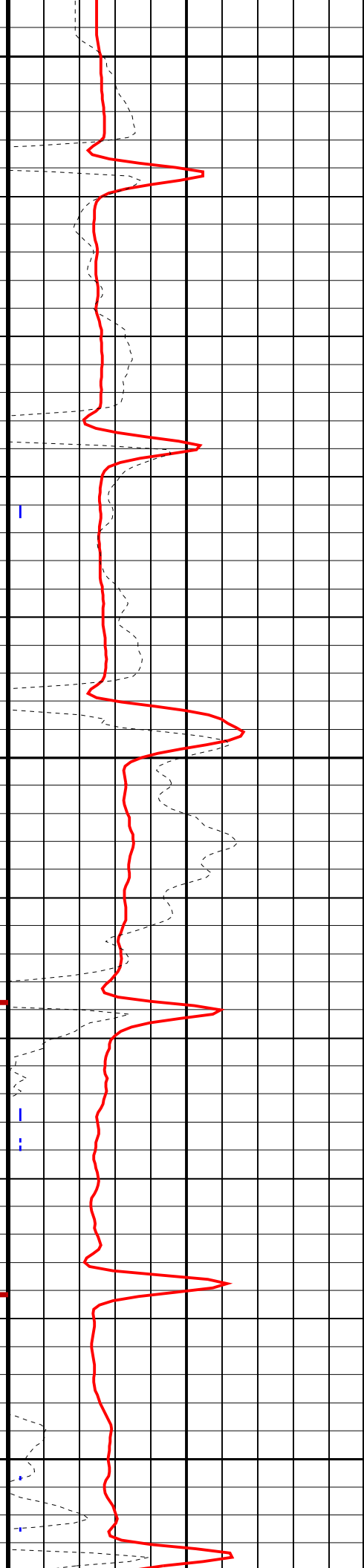
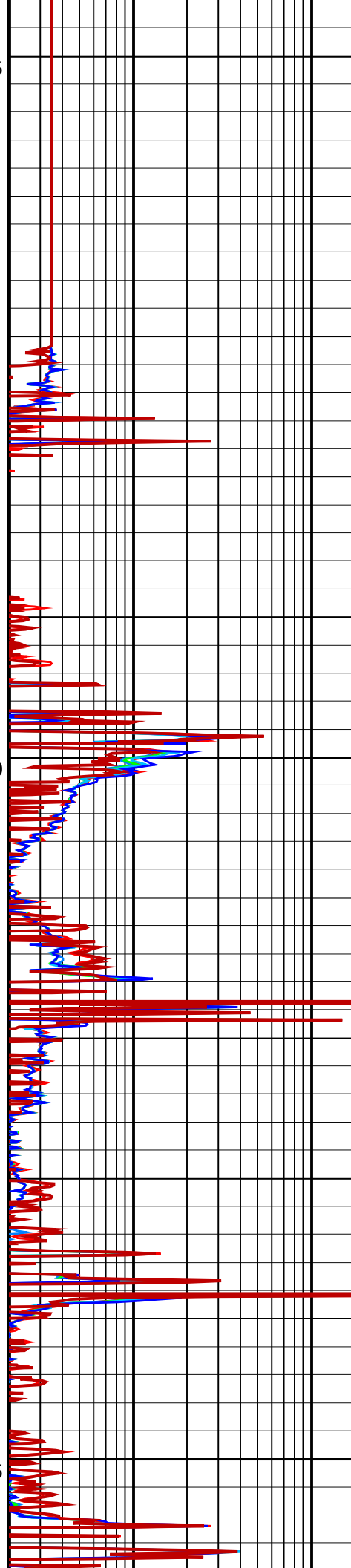
PIP SUMMARY

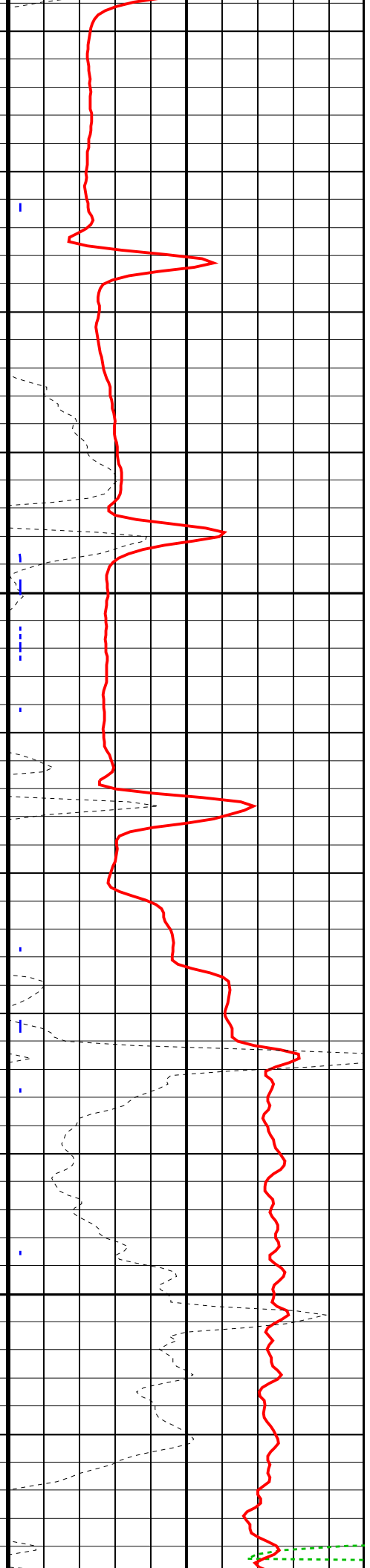
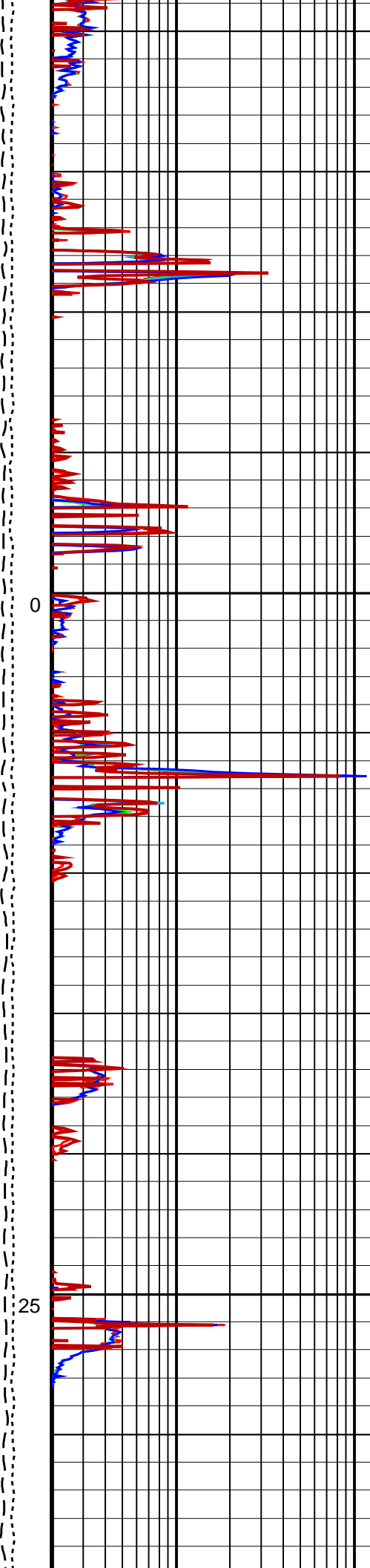
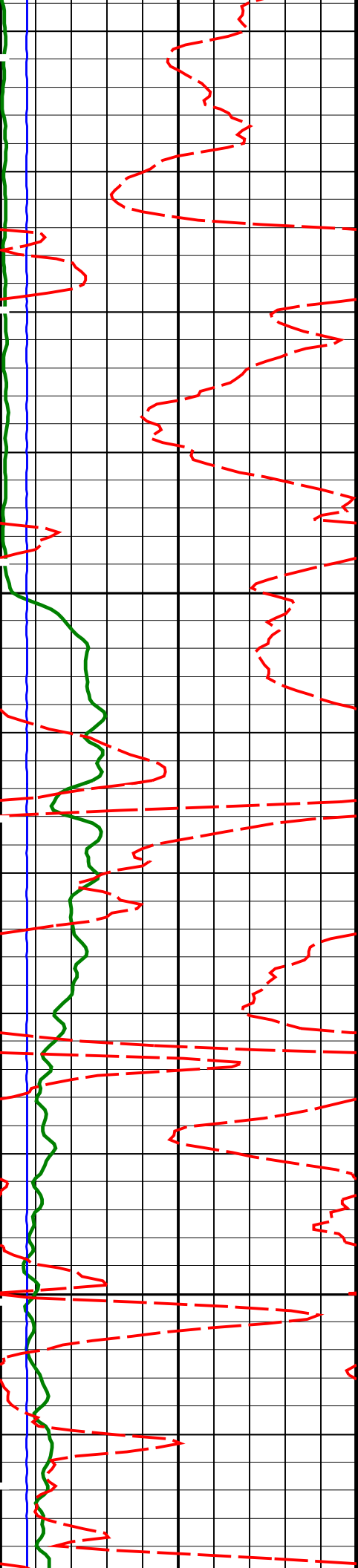
Time Mark Every 60 S

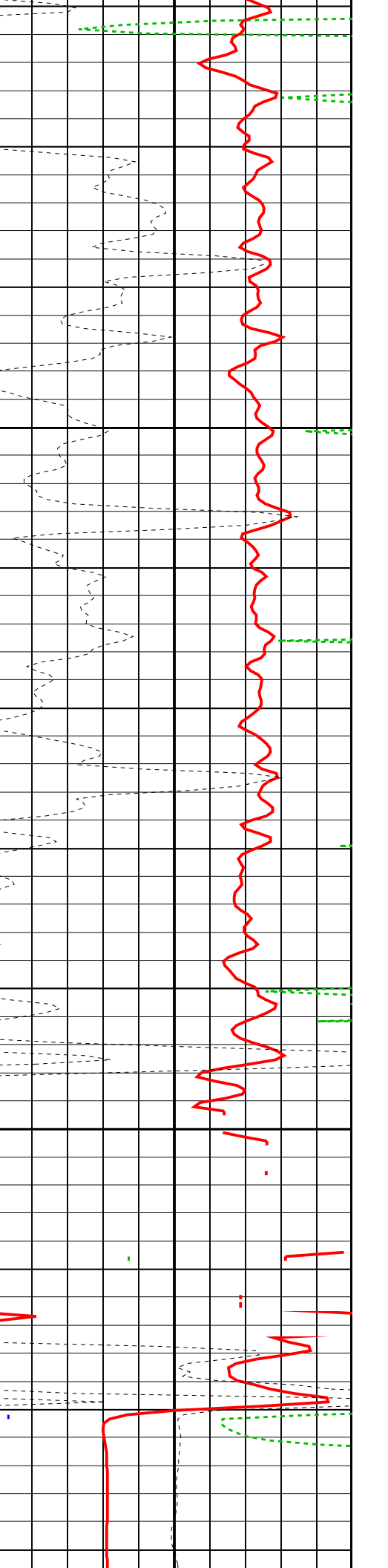
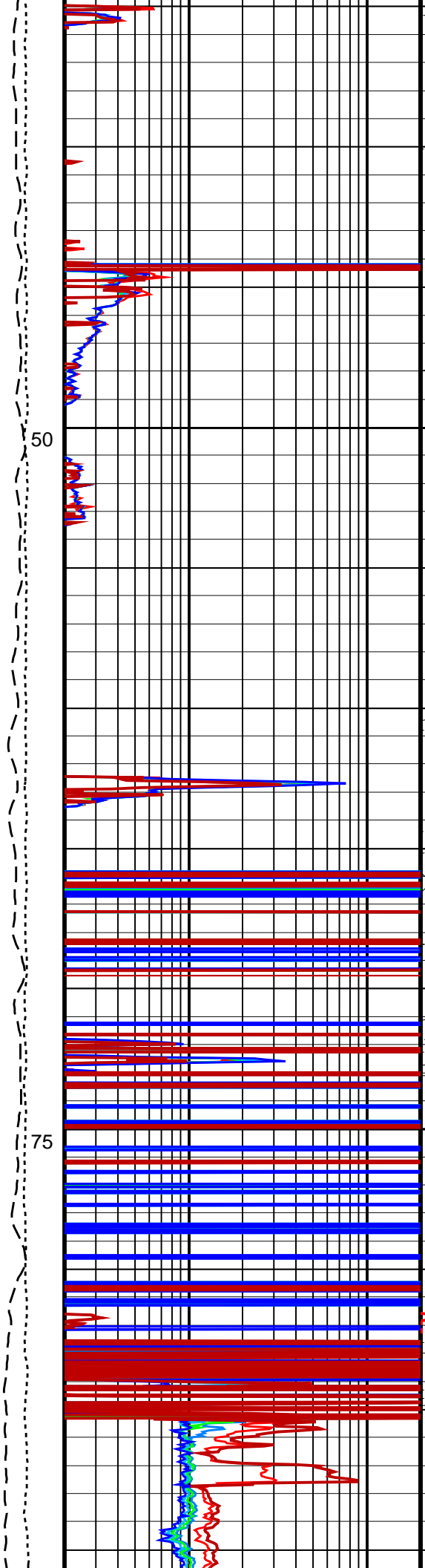


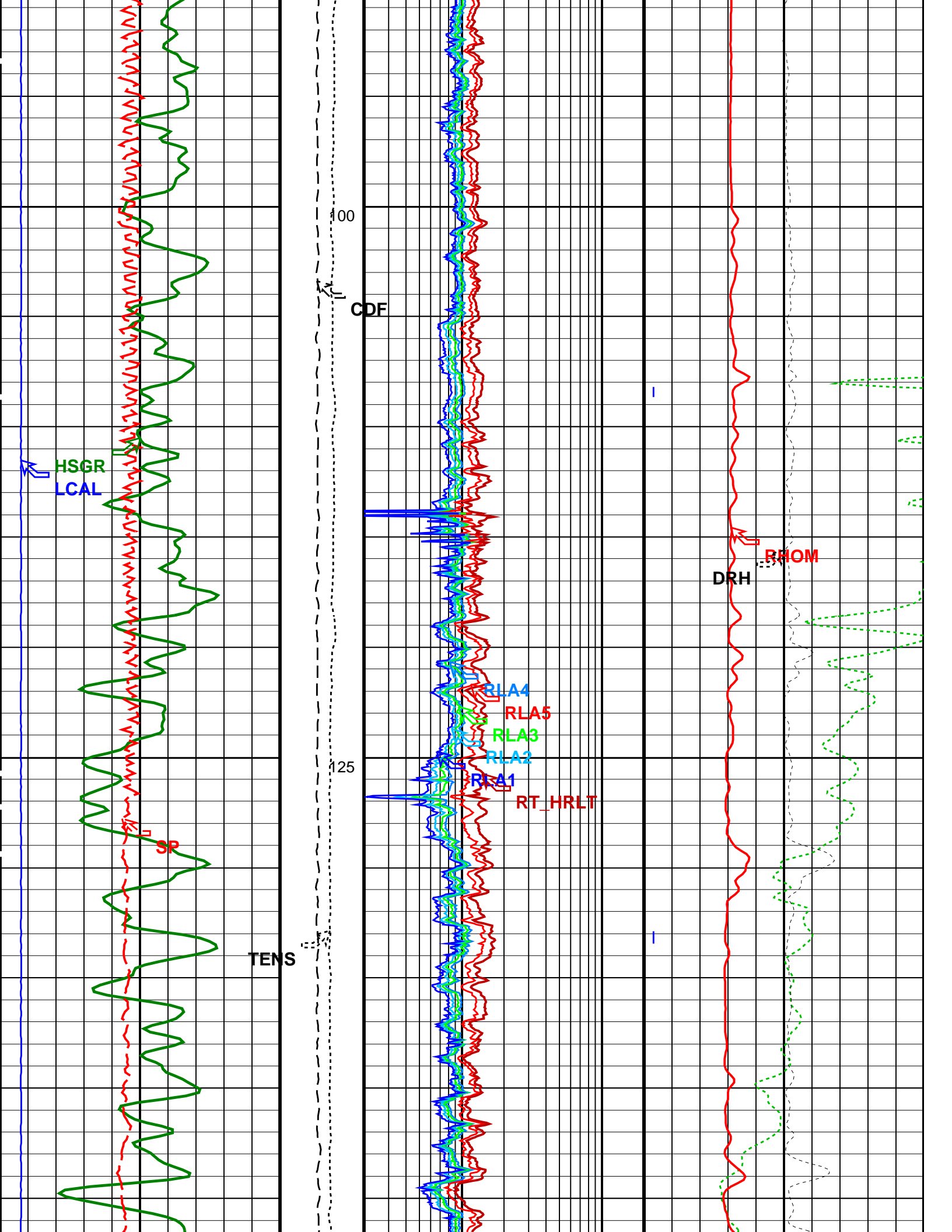


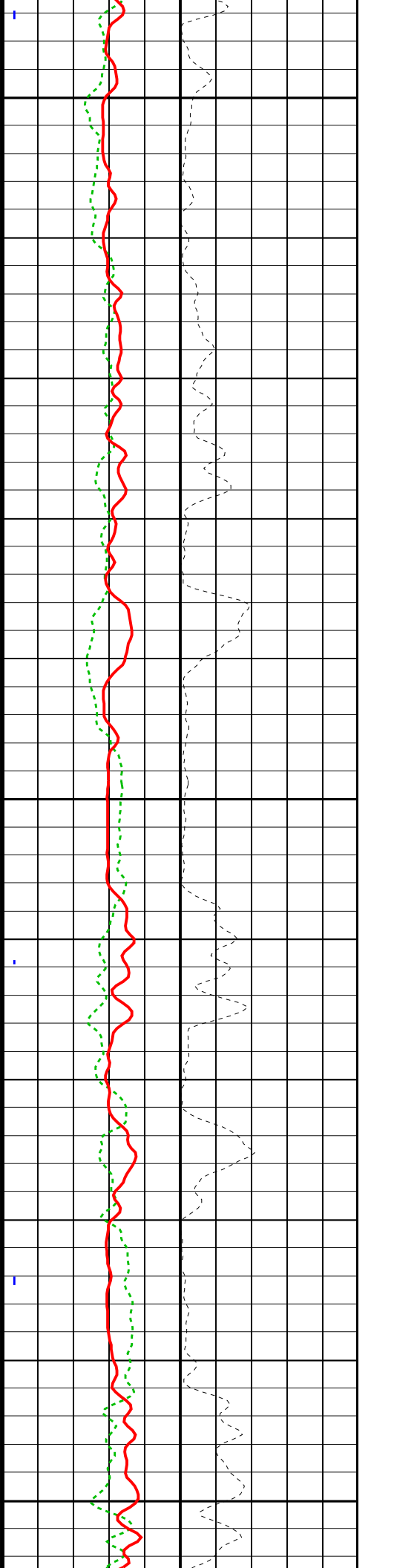
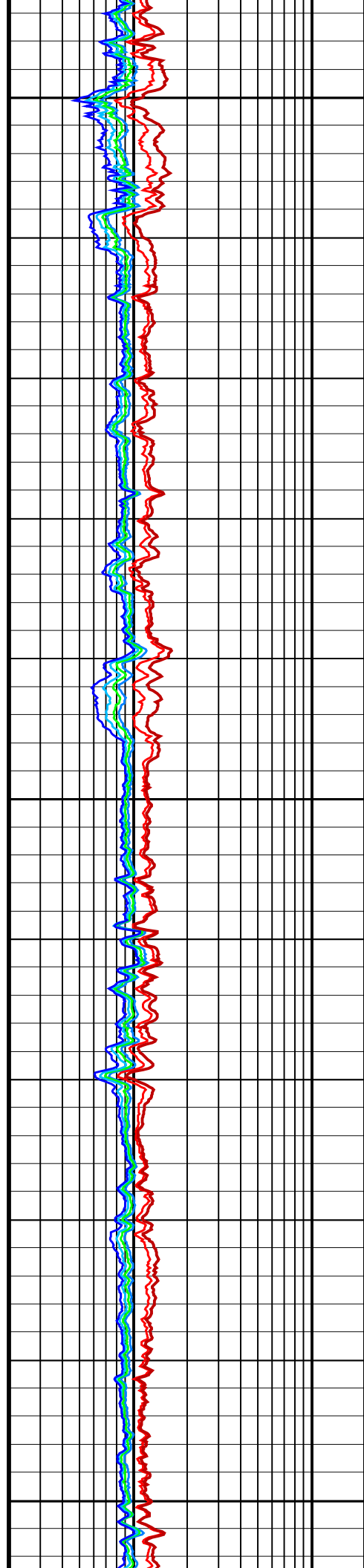
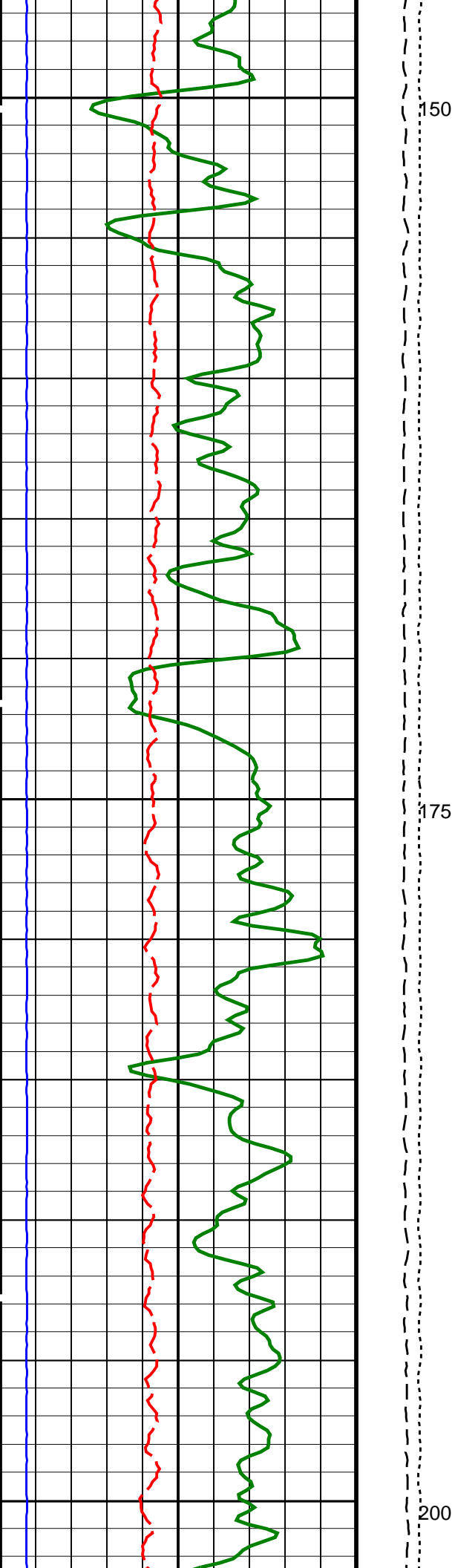
-75
-50
-25

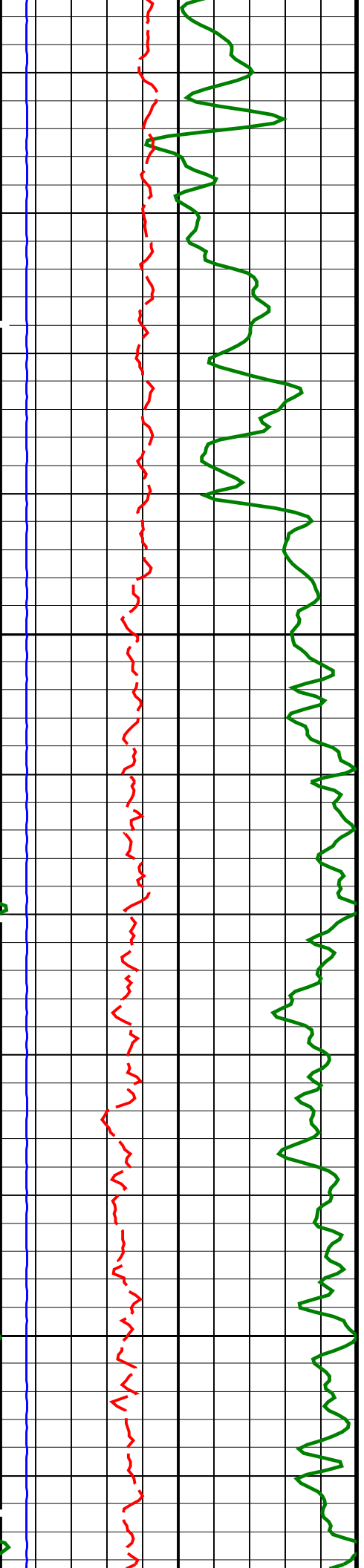




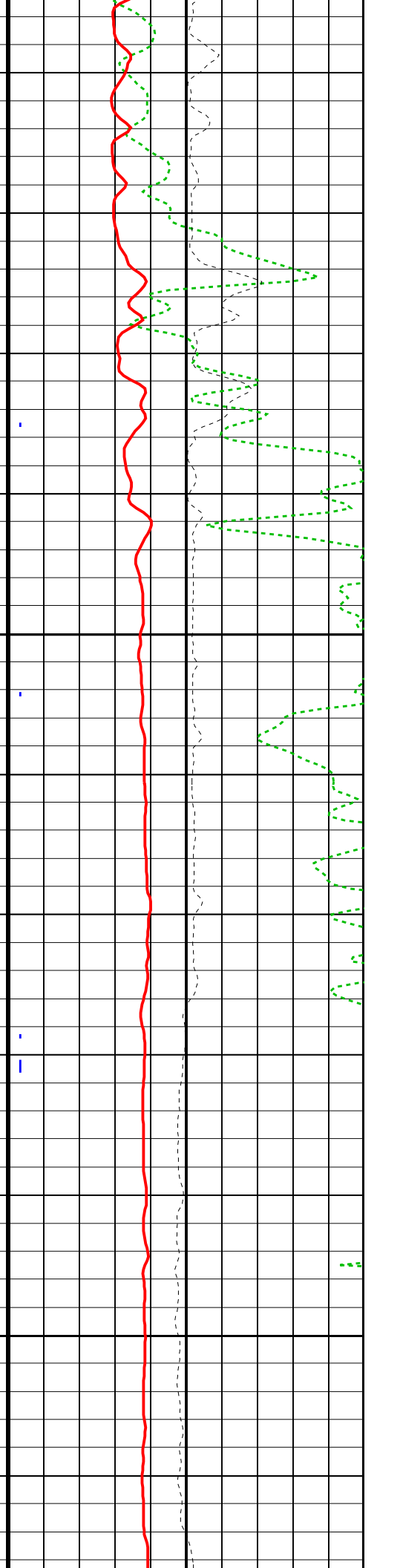
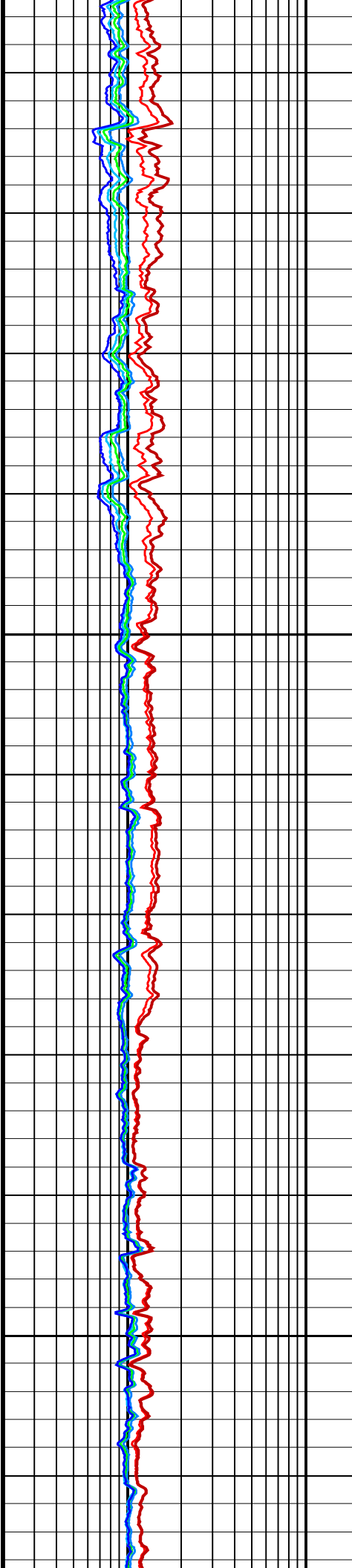


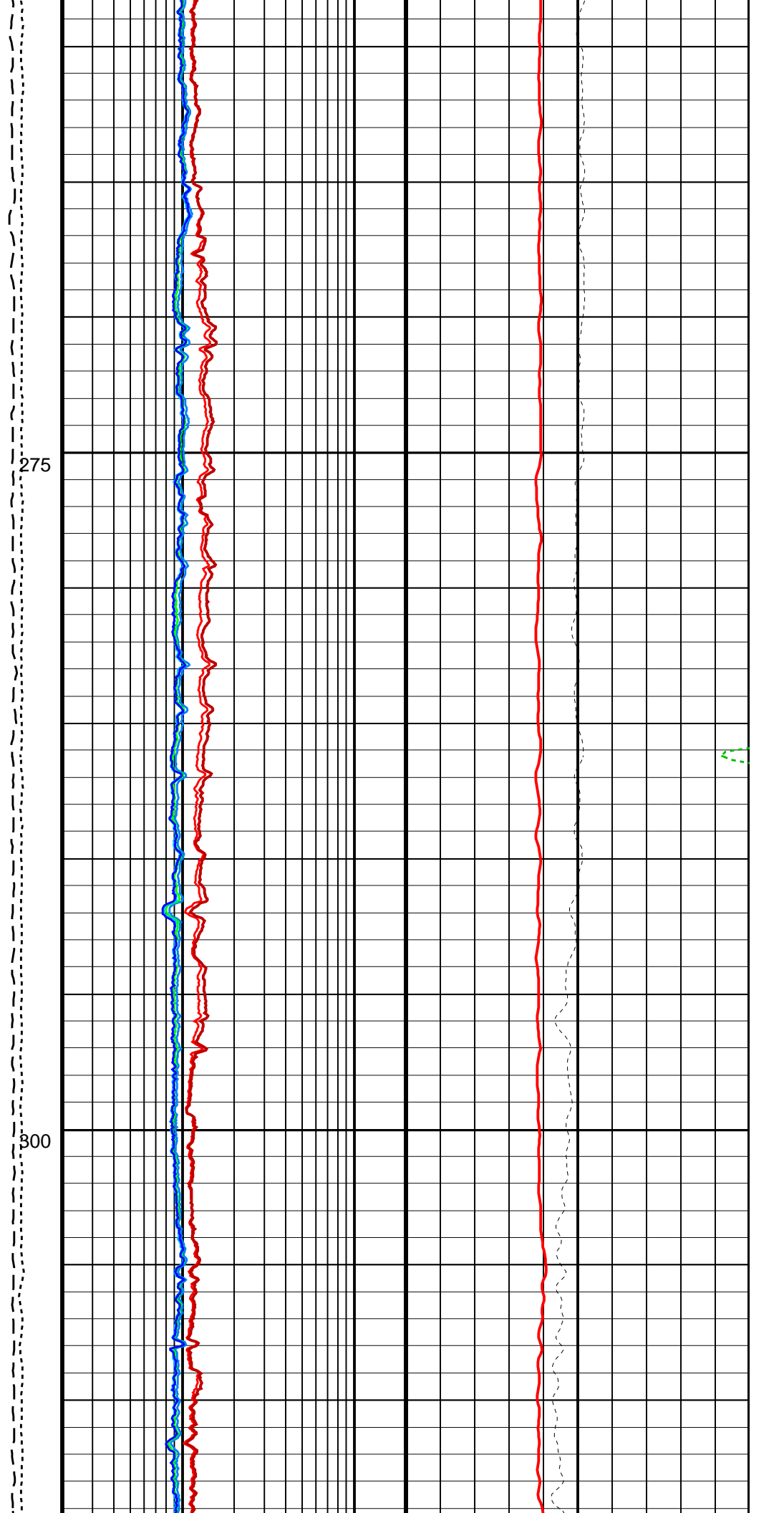
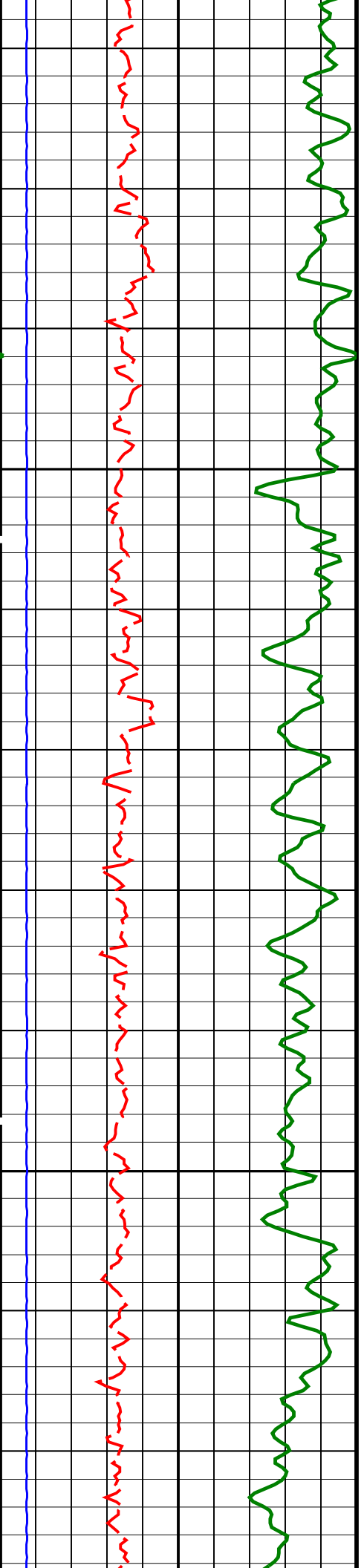


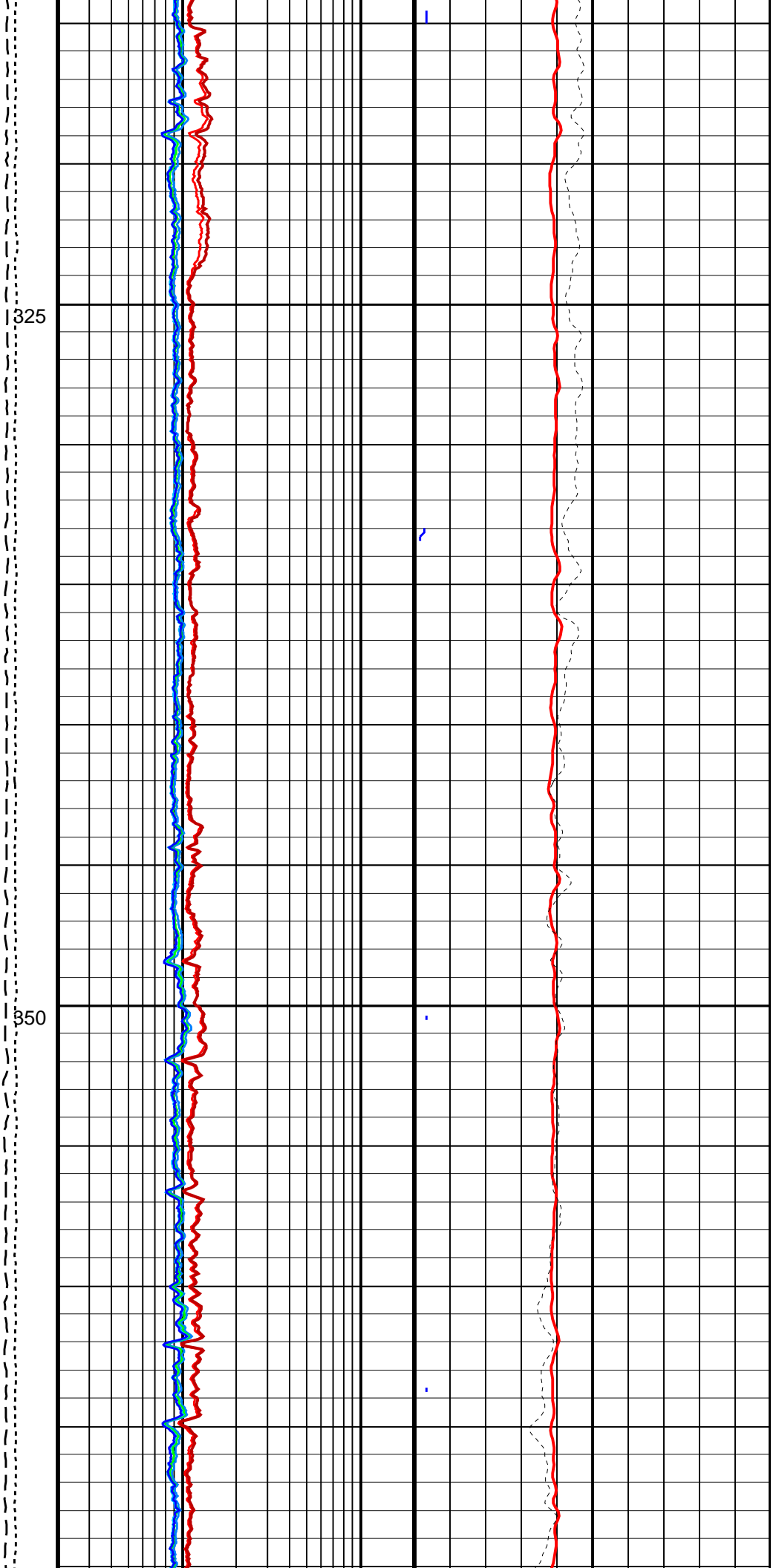
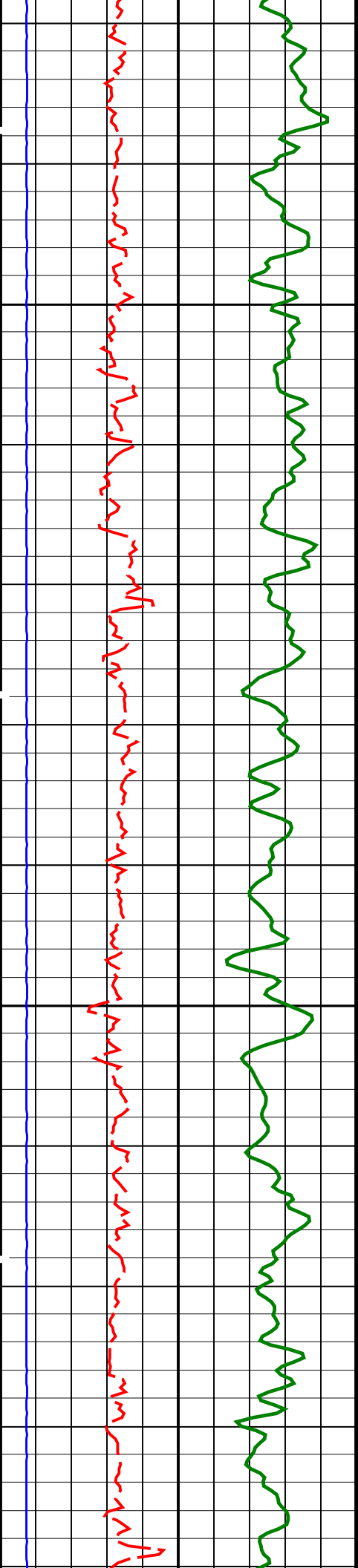


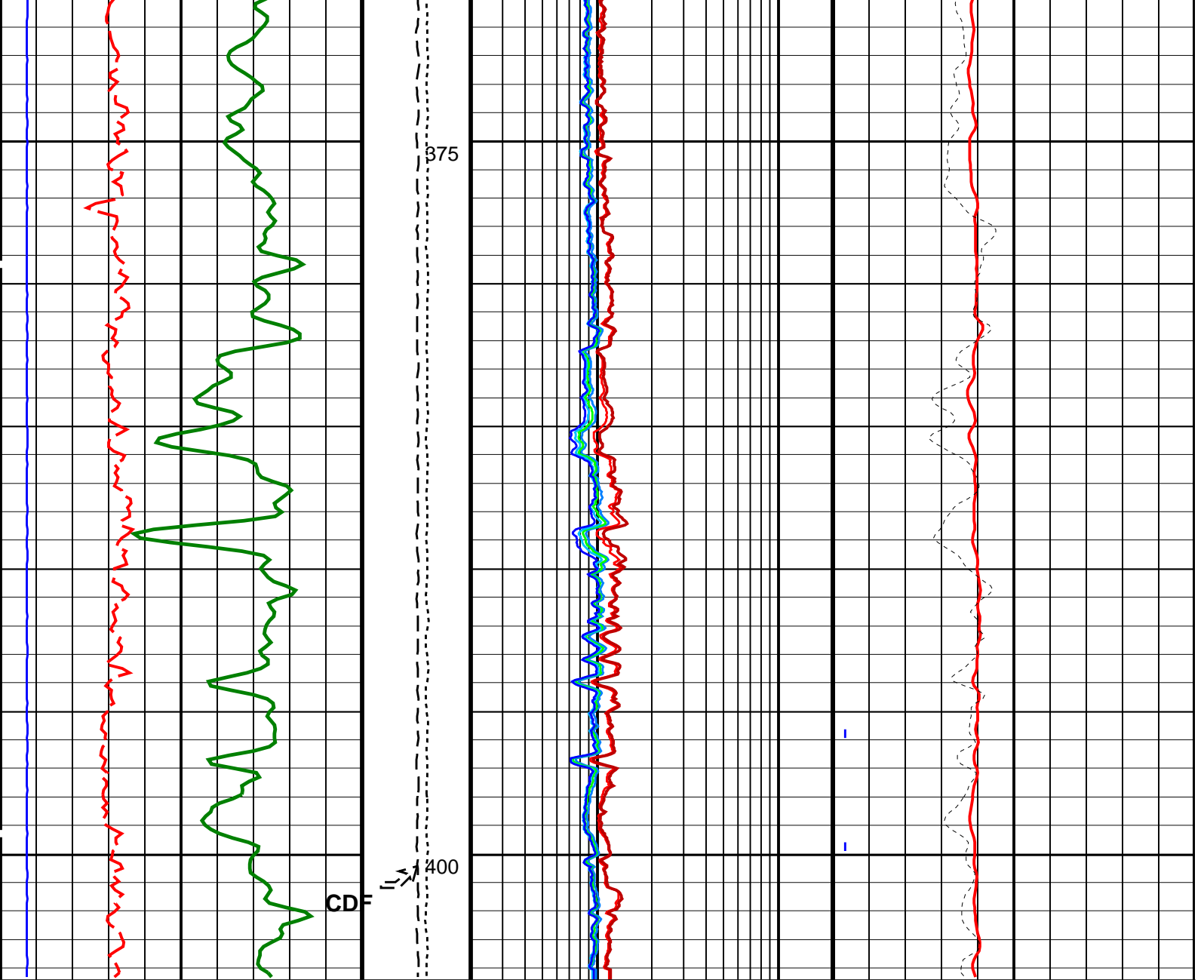


225
250









HLDS Caliper (LCAL) (IN)	Tension (TENS) (LBF)	HRLT Resistivity 4 (RLA4) (OHMM)	HLDS Long Spaced Photoelectric Effect (PEFL) (-----)
SP (SP) (MV)	Calibrated Downhole Force (CDF) (LBF)	HRLT Resistivity 5 (RLA5) (OHMM)	HLDS Bulk Density (RHOM) (G/C3)
HNGS Spectroscopy Gamma Ray (HSGR) (GAPI)		HRLT Resistivity 3 (RLA3) (OHMM)	HLDS Bulk Density Correction (DRH) (G/C3)
		HRLT Resistivity 2 (RLA2) (OHMM)	APS Thermal Porosity (TNPH_APS) (PU)
		HRLT Resistivity 1 (RLA1) (OHMM)	
		HRLT True Resistivity (RT_HRLT) (OHMM)	

PIP SUMMARY

OP System Version: 19C0-187

MSS_LDEO-A	19C0-187	HRLT-B	19C0-187
HLDS	19C0-187	LDSC-B	19C0-187
APS-C	19C0-187	HNGC-B	19C0-187
HNGS-BA	19C0-187	EDTC-B	SKK-5169-EDTCB
BSP	19C0-187		

Input DLIS Files

DEFAULT	MSS_LDEO_HRLA_LDL_011LDP	FN:17	PRODUCER	06-Jan-2015 07:39	2416.3 M	2958.4 M
---------	--------------------------	-------	----------	-------------------	----------	----------

Output DLIS Files

DEFAULT	MSS_LDEO_HRLA_LDL_045PDP	FN:65	PRODUCER	07-Jan-2015 04:46	-92.2 M	404.5 M
---------	--------------------------	-------	----------	-------------------	---------	---------