

## Input DLIS Files

DEFAULT      FMS\_DSI\_NGS\_025PDP      FN:44    PRODUCER    06-Jan-2015 20:09    2416.3 M      2996.0 M

## Output DLIS Files

DEFAULT      FMS\_DSI\_NGS\_028PDP      FN:48    PRODUCER    07-Jan-2015 01:56

## OP System Version: 19C0-187

MEST-B	19C0-187	DTA-A	19C0-187
DSST-B	19C0-187	HNGC-B	19C0-187
HNGS-BA	19C0-187	EDTC-B	SKK-5169-EDTCB

Format: DSST\_P\_S\_VDL\_COLOR      Vertical Scale: 1:200      Graphics File Created: 07-Jan-2015 01:56

## Parameters

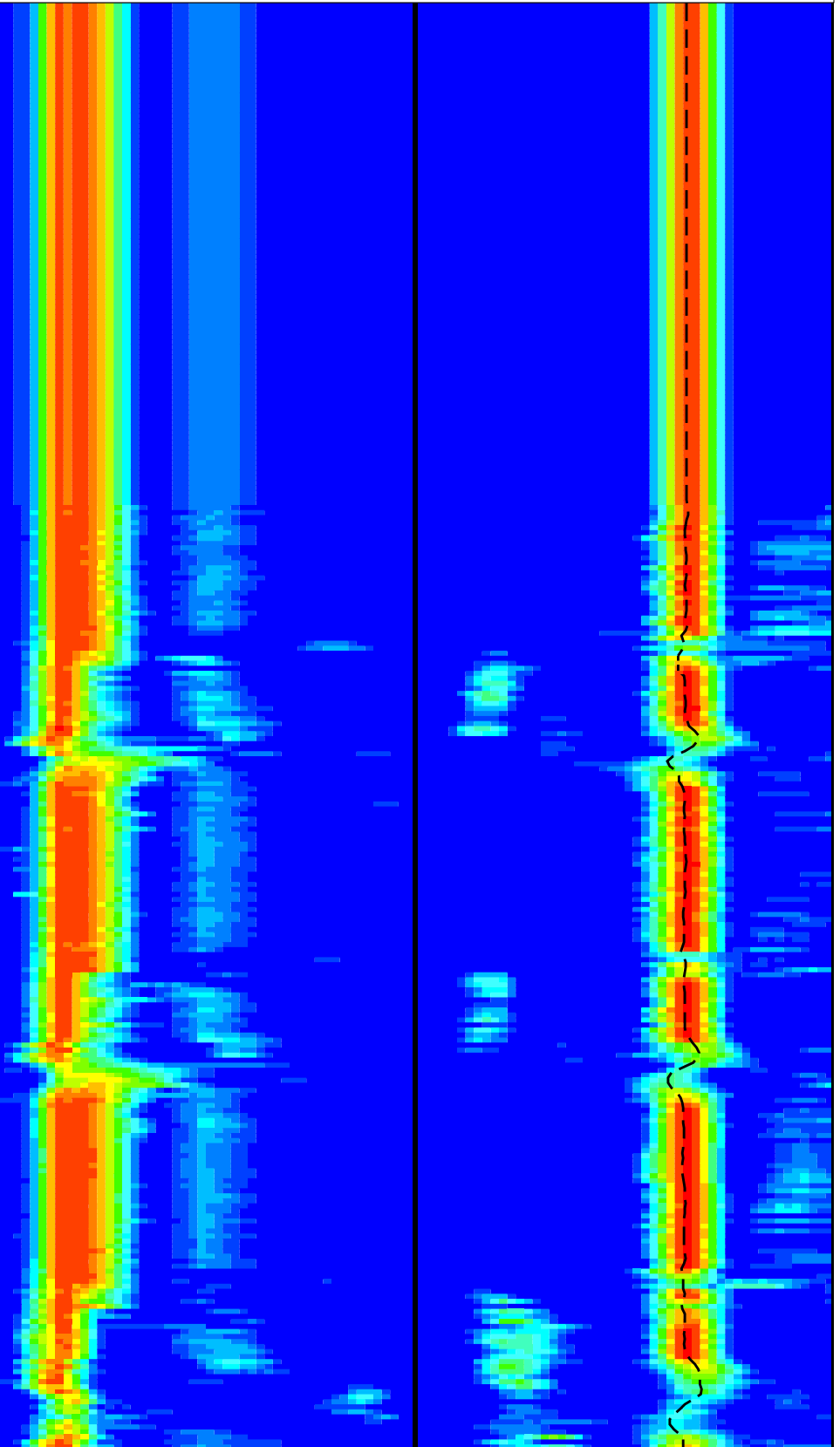
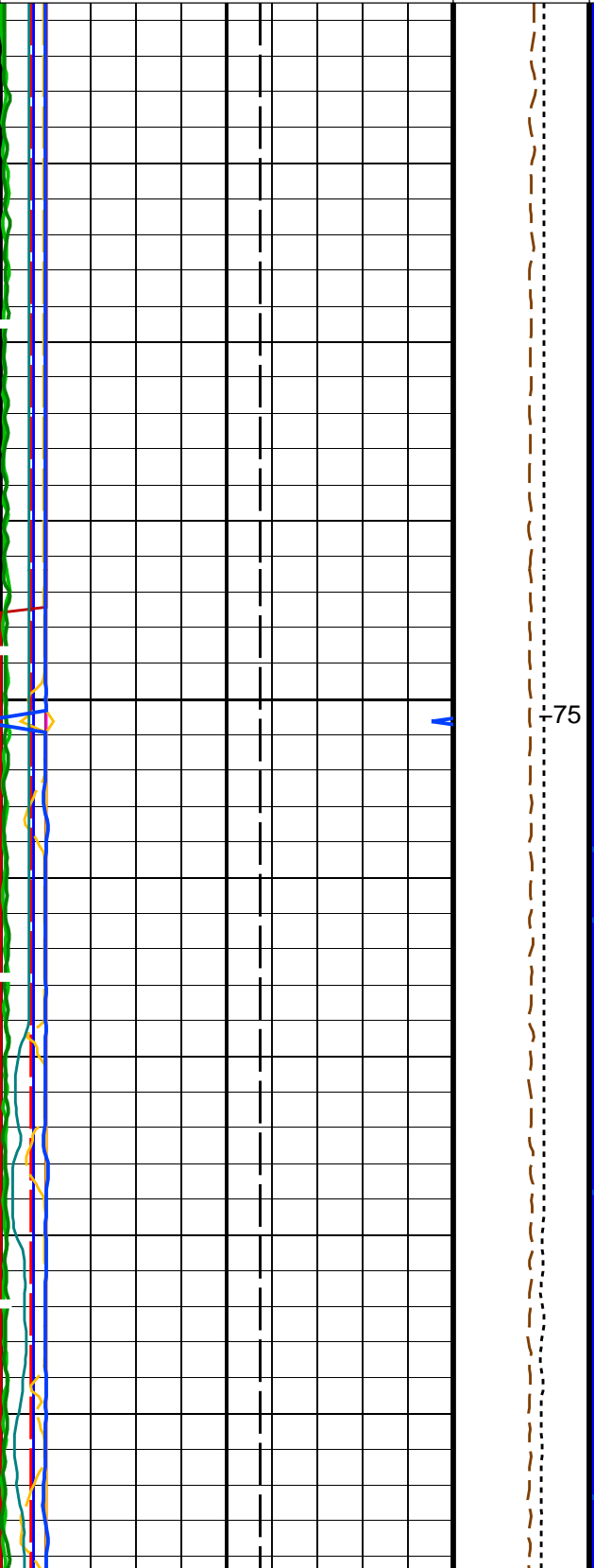
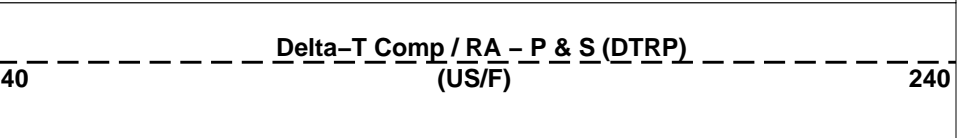
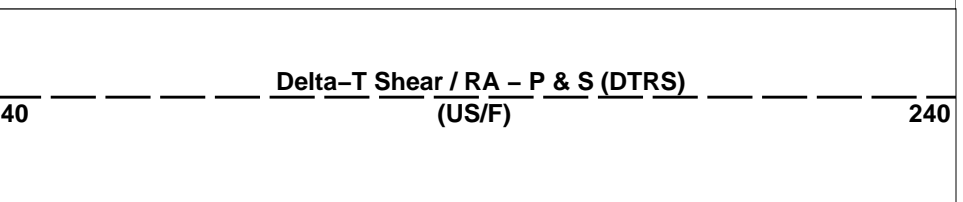
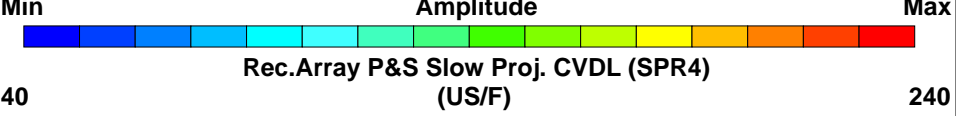
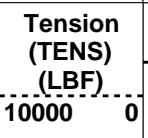
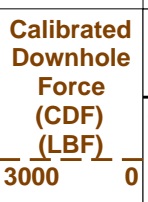
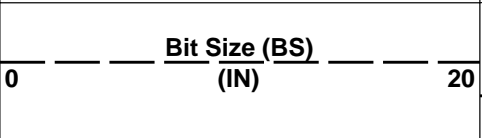
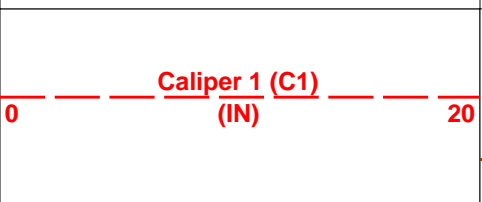
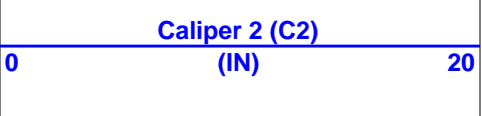
DLIS Name	Description	Value	
MEST-B: Micro Electrical Scanner - B (Slim)			
AFMO	Accelerometer Filtering Mode	MOVING_AVERAGE	
ICMO	Inclinometry Computation Mode	AUTOMATIC_SELECTION	
MDEC	Magnetic Field Declination	-0.884445	DEG
DSST-B: Dipole Shear Imager - B			
BHS	Borehole Status	OPEN	
CASF	Label Casing Function - Monopole P&S	50	
COLL	Label Slowness Lower Limit - Monopole P&S Compressional	120	US/F
COUL	Label Slowness Upper Limit - Monopole P&S Compressional	210	US/F
DDE4	Digitizing Delay 4	0	US
DDEX	Digitizing Delay X	0	US
DLCS	Label Compressional Source - Dipole Shear	USE	
DSHL	Label Slowness Lower Limit - Dipole Shear	75	US/F
DSHU	Label Slowness Upper Limit - Dipole Shear	1200	US/F
DSI4	Digitizer Sample Interval 4	10	US
DSIX	Digitizer Sample Interval X	40	US
DTC5	Compressional Delta-T Source for DTCO Channel	PS_COMP	
DTF	Delta-T Fluid	195	US/F
DWC4	Digitizer Word Count 4	512	
DWCX	Digitizer Word Count X	512	
FILG	Label Fill Gap Control - Monopole P&S	COMP_SHEAR	
GCSE	Generalized Caliper Selection	BS	
LFC	Label Formation Character - Monopole P&S	DYNAMIC	
LTXG	Lower Dipole Transmitter Geometry	156	IN
MCS	Mean Casing Slowness	57	US/F
MTXG	Monopole Transmitter Geometry	186	IN
NWI1	Number Waveform Items 1	0	
NWI4	Number Waveform Items 4	8	
NWIX	Number Waveform Items X	32	
RSMN	Label Shear/Compressional Minimum Ratio - Monopole P&S	1.4	
RSMX	Label Shear/Compressional Maximum Ratio - Monopole P&S	2.12	
RX1G	Receiver 1 Geometry	294	IN
RX2G	Receiver 2 Geometry	300	IN
RX3G	Receiver 3 Geometry	306	IN
RX4G	Receiver 4 Geometry	312	IN
RX5G	Receiver 5 Geometry	318	IN
RX6G	Receiver 6 Geometry	324	IN
RX7G	Receiver 7 Geometry	330	IN
RX8G	Receiver 8 Geometry	336	IN
SAM4	DSST Sonic Acquisition Mode 4 - Monopole Mode for P&S	EVEN	
SAMX	DSST Sonic Acquisition Mode X - Both Dipoles or Monopole Mode for Expert	BCR	
SAS1	STC Sonic Array Status - Lower Dipole	255	
SAS4	STC Sonic Array Status - Monopole P&S	255	
SBO4	STC Search Band Offset - Monopole P&S	500	US
SBR4	STC Baseline Removal - Monopole P&S	ON	
SBW4	STC Search Bandwidth - Monopole P&S	2000	US
SFC4	STC Formation Character - Monopole P&S	SELECTABLE	
SFM4	STC Filter - Monopole P&S	B3-20K	
SHLL	Label Slowness Lower Limit - Monopole P&S Shear	235	US/F
SHUL	Label Slowness Upper Limit - Monopole P&S Shear	240	US/F
SLL4	STC Slowness Lower Limit - Monopole P&S	40	US/F
SST4	STC Slowness Step - Monopole P&S	2	US/F
SSW1	STC Source Waveform - Lower Dipole	WF_SAM1	
SSW4	STC Source Waveform - Monopole P&S	WF_SAM4	
STLL	Label Slowness Lower Limit - Monopole Stoneley	75	US/F
STUL	Label Slowness Upper Limit - Monopole Stoneley	1200	US/F
SUI4	STC Slowness Upper Limit - Monopole P&S	240	US/F

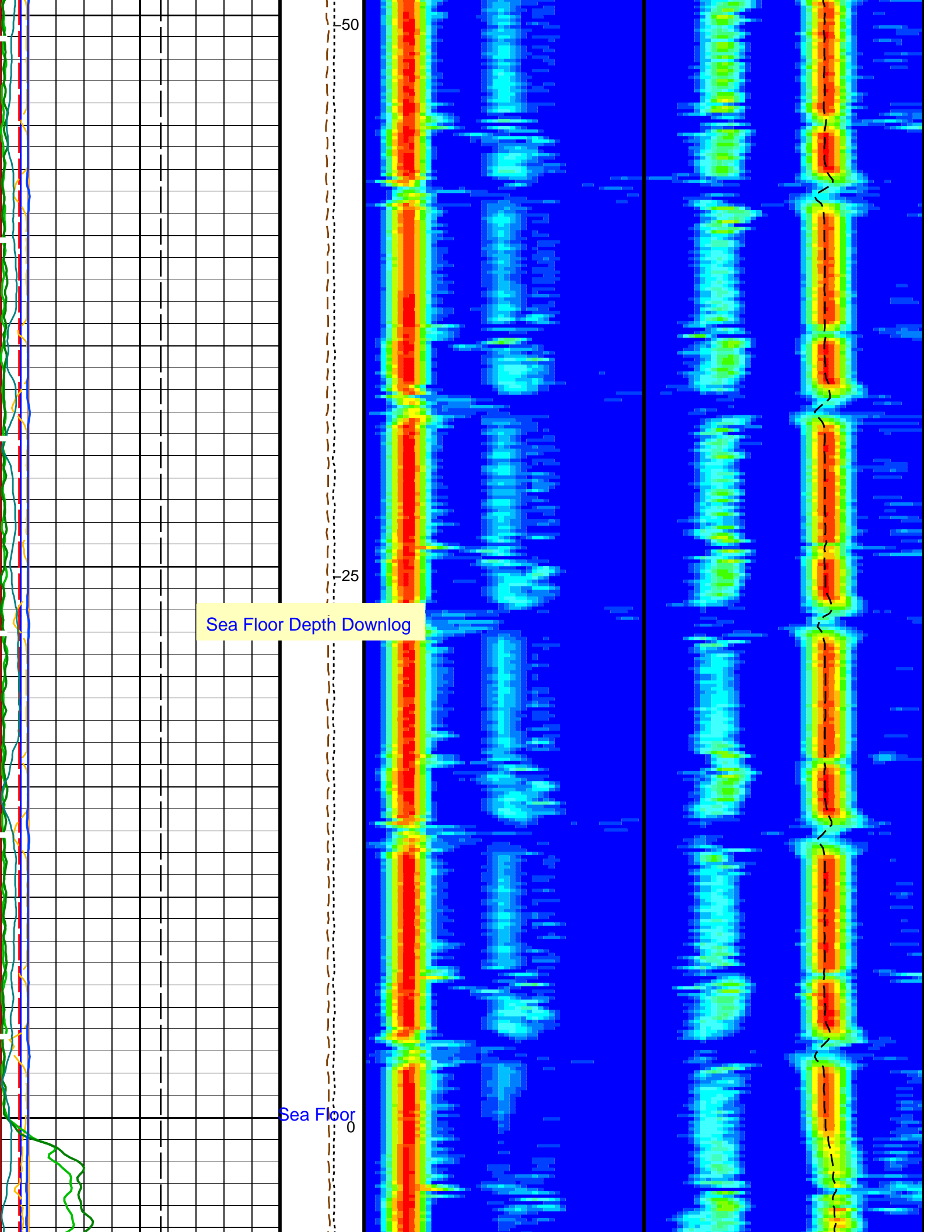
SUE4	STC Slowness Upper Limit - Monopole P&S	240	US/F
SWD4	STC Slowness Width - Monopole P&S	10	US
TBF4	STC Time for Baseline Fill - Monopole P&S	300	US
TLL4	STC Time Lower Limit - Monopole P&S	150	US
TST4	STC Time Step - Monopole P&S	50	US
TUL4	STC Time Upper Limit - Monopole P&S	3660	US
TWD4	STC Time Width - Monopole P&S	1000	US
TWI1	STC Integration Time Window - Lower Dipole	1600	US
TWI4	STC Integration Time Window - Monopole P&S	500	US
TWSX	Transmitter Waveform Select X	0	
WFM4	Waveform Mode 4	W1	
<b>HNGS-BA: Hostile Natural Gamma Ray Sonde</b>			
BAR1	HNGS Detector 1 Barite Constant	1	
BAR2	HNGS Detector 2 Barite Constant	1	
BHK	HNGS Borehole Potassium Correction Concentration	0	
BHS	Borehole Status	OPEN	
CSD1	Inner Casing Outer Diameter	0	IN
CSD2	Outer Casing Outer Diameter	0	IN
CSW1	Inner Casing Weight	0	LB/F
CSW2	Outer Casing Weight	0	LB/F
DBCC	HNGS Barite Constant Correction Flag	NONE	
GCSE	Generalized Caliper Selection	BS	
H1P	HNGS Detector 1 Allow/Disallow In Processing	ALLOW	
H2P	HNGS Detector 2 Allow/Disallow In Processing	ALLOW	
HABK	HNGS Borehole Potassium Running Average	-0.028324	
HALF	HNGS Alpha Filter Length	60	IN
HCRB	HNGS Apply Borehole Potassium Correction	NONE	
HMWM	Mud Weighting Material	BARI	
HNPE	HNGS Processing Enable	YES	
S1BI	HNGS Detector 1 Calibration Bismuth Count Rate	1.3	CPS
S2BI	HNGS Detector 2 Calibration Bismuth Count Rate	1.3	CPS
SGRC	HNGS Standard Gamma-Ray Correction Flag	YES	
TPOS	Tool Position	CENT	
VBA1	HNGS Detector 1 Variable Barite Factor Running Average	1.08512	
VBA2	HNGS Detector 2 Variable Barite Factor Running Average	-0.518687	
<b>EDTC-B: Enhanced DTS Cartridge</b>			
BHS	Borehole Status	OPEN	
GCSE	Generalized Caliper Selection	BS	
<b>DIR: Directional Survey Computation</b>			
SPVD	TVD of Starting Point	0	M
TIMD	Along-hole depth of Tie-in Point	0	M
TIVD	TVD of Tie-in Point	0	M
<b>System and Miscellaneous</b>			
BS	Bit Size	11.438	IN
DFD	Drilling Fluid Density	1.20	G/C3
DO	Depth Offset for Playback	-2511.0	M
PP	Playback Processing	NORMAL	

**PIP SUMMARY**

Time Mark Every 60 S

<b>HNGS Spectroscopy Gamma Ray (HSGR)</b>		
0	(GAPI)	100
<b>Waveform Data Copy Indicator 4 - Monopole P&amp;S (WCI4)</b>		
0	(----)	10
<b>Peak Coherence / RA - P &amp; S Shear (CHRS)</b>		
-1	(----)	9
<b>Peak Coherence / RA - P &amp; S Comp (CHRP)</b>		
0	(----)	10
<b>Peak Coherence / RA - Lower Dipole (CHR1)</b>		
0	(----)	10
<b>Sonic Velocity (SVEL)</b>		
1000	(M/S)	6000
<b>Gamma Ray (GR_EDTC)</b>		
0	(GAPI)	100
<b>Sonde Deviation (SDEVM)</b>		
0	(DEG)	10



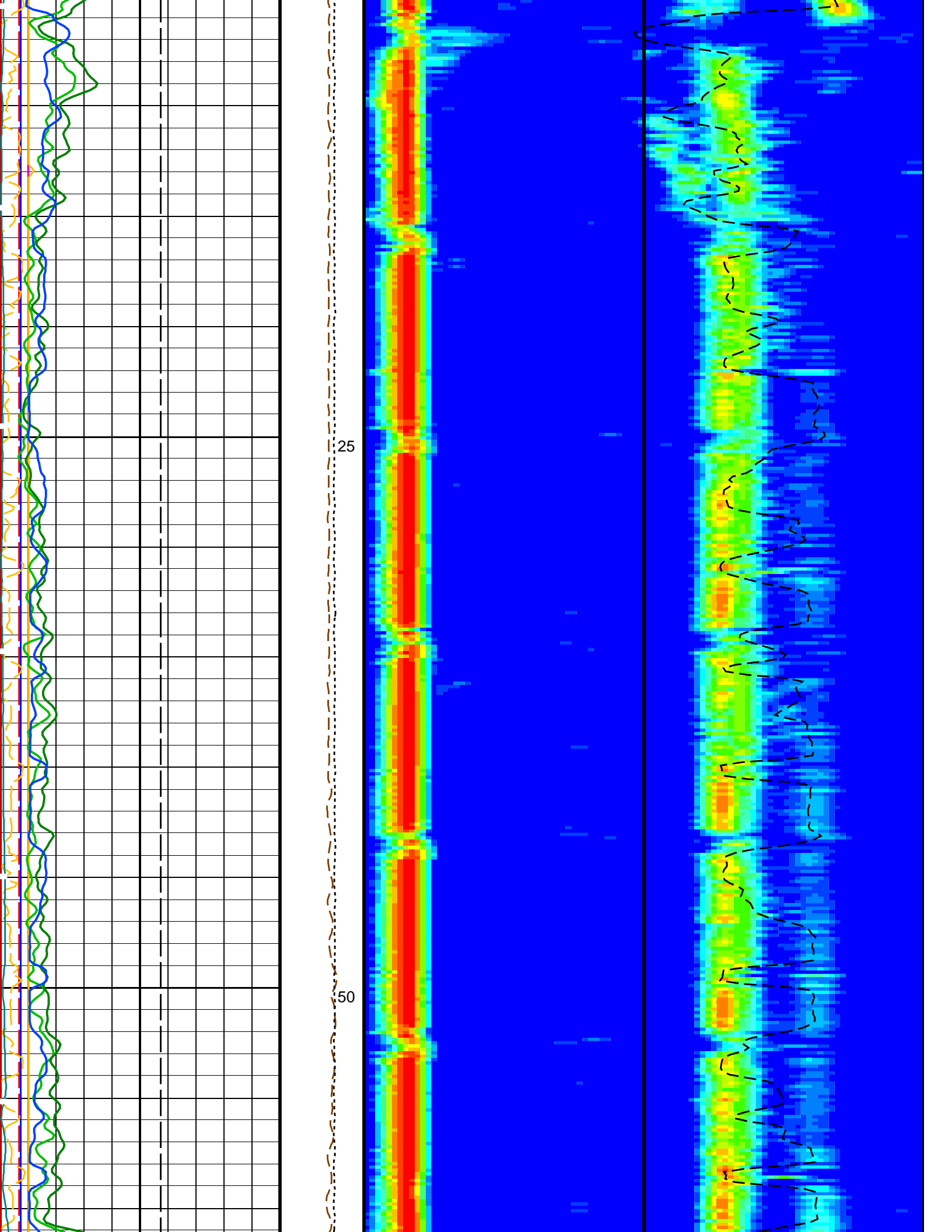


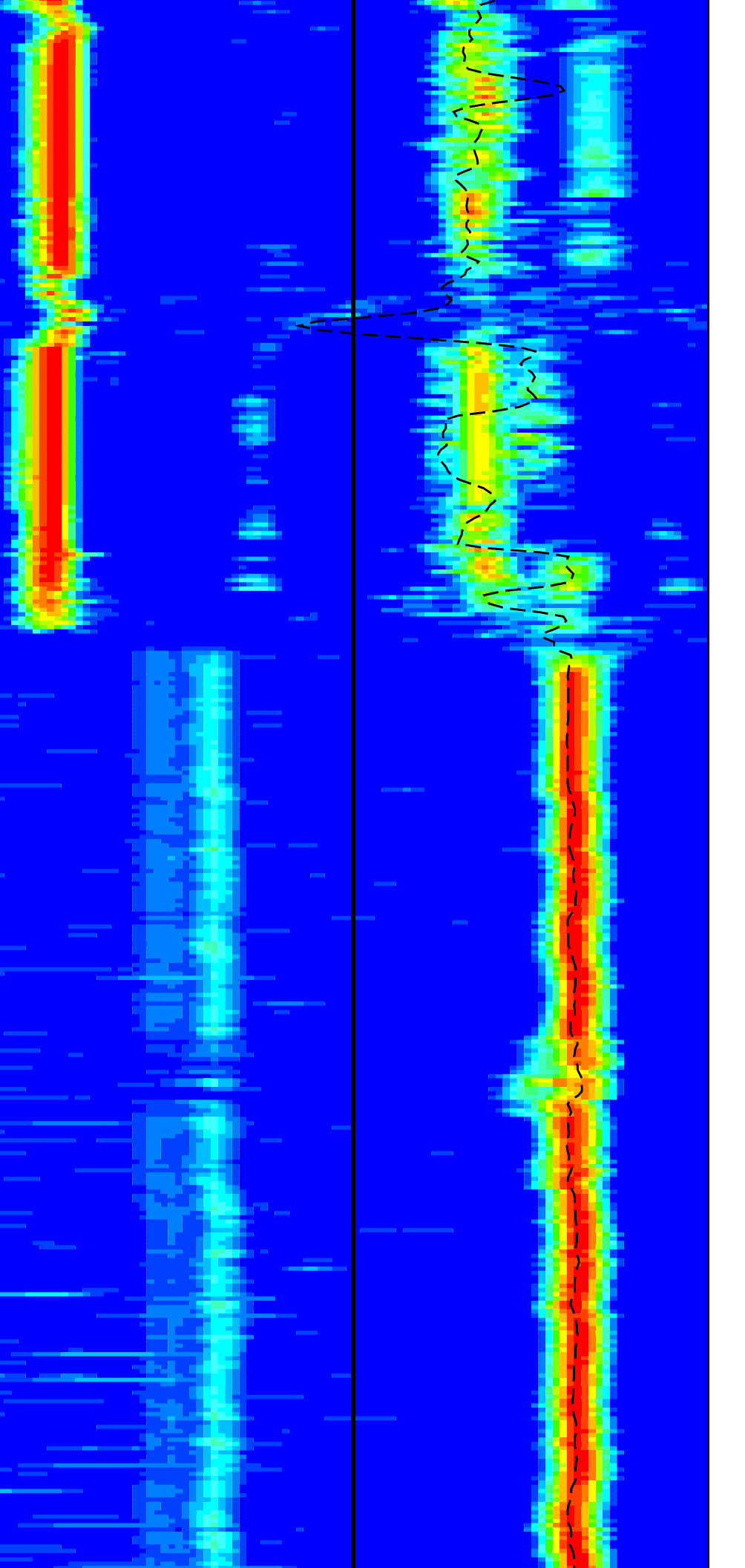
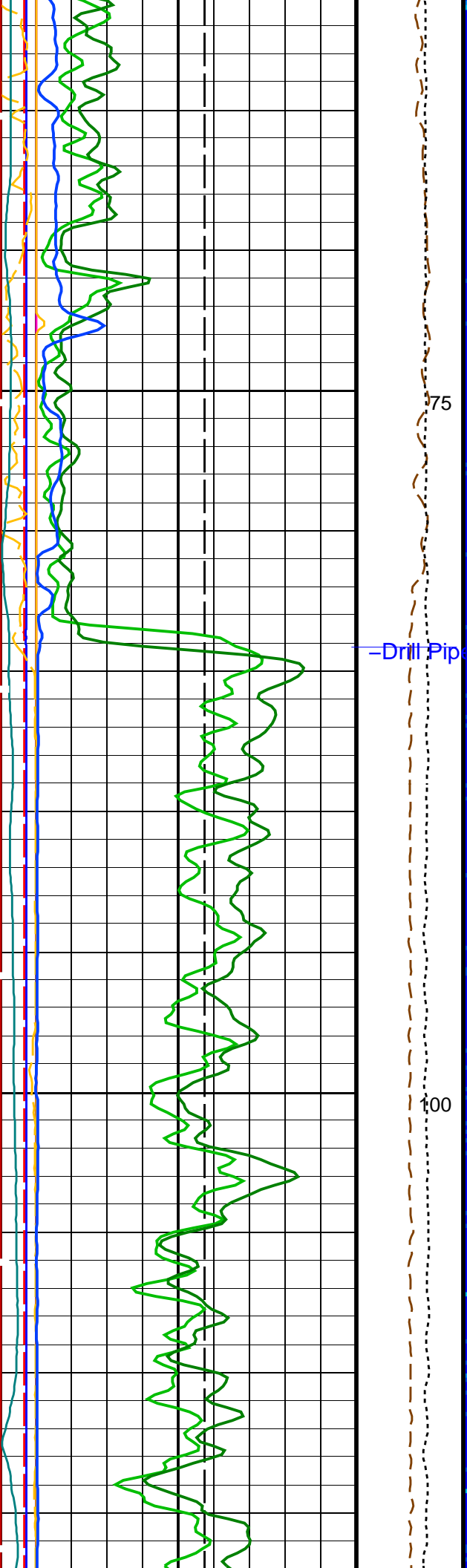
Sea Floor Depth Downlog

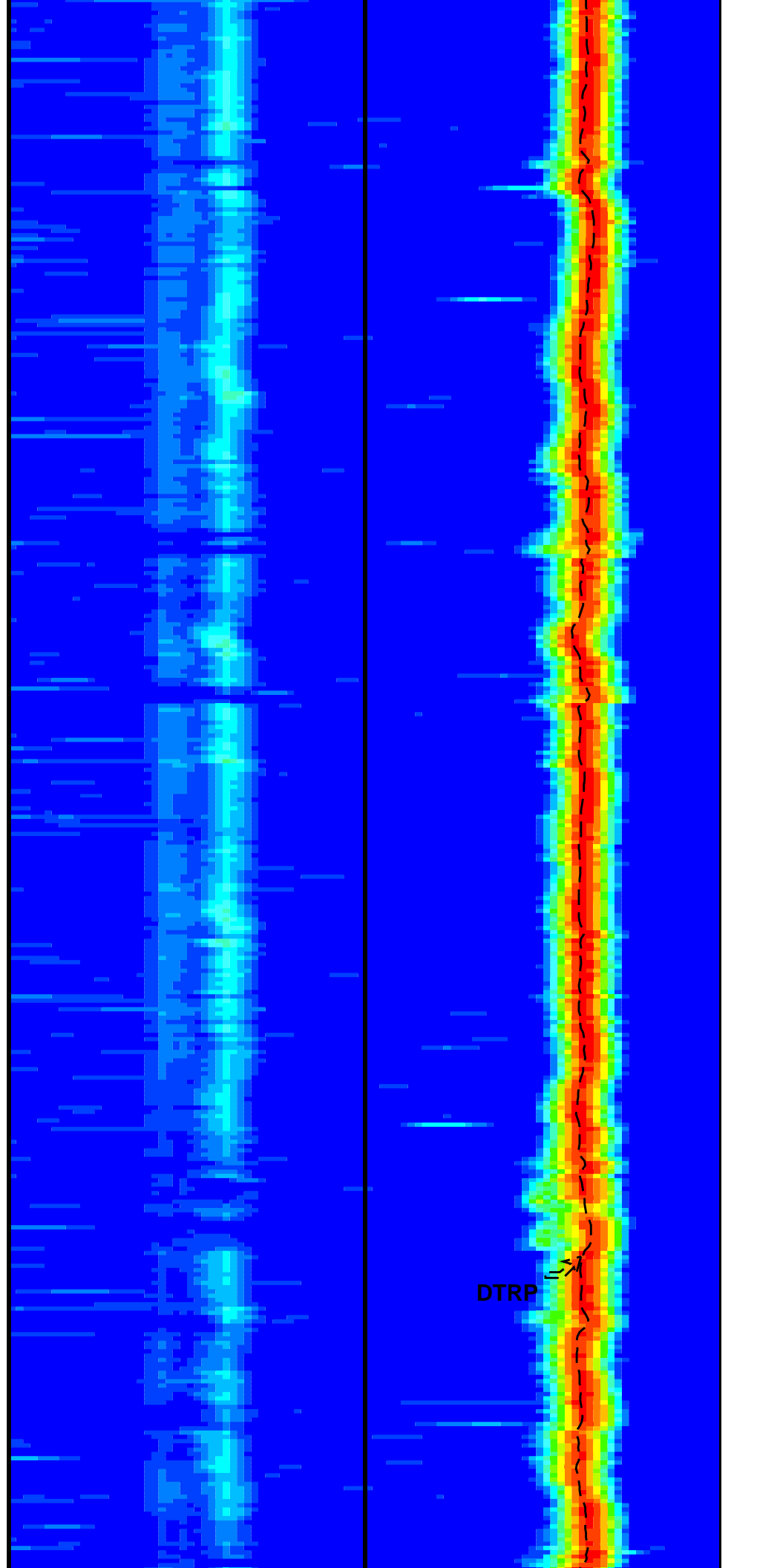
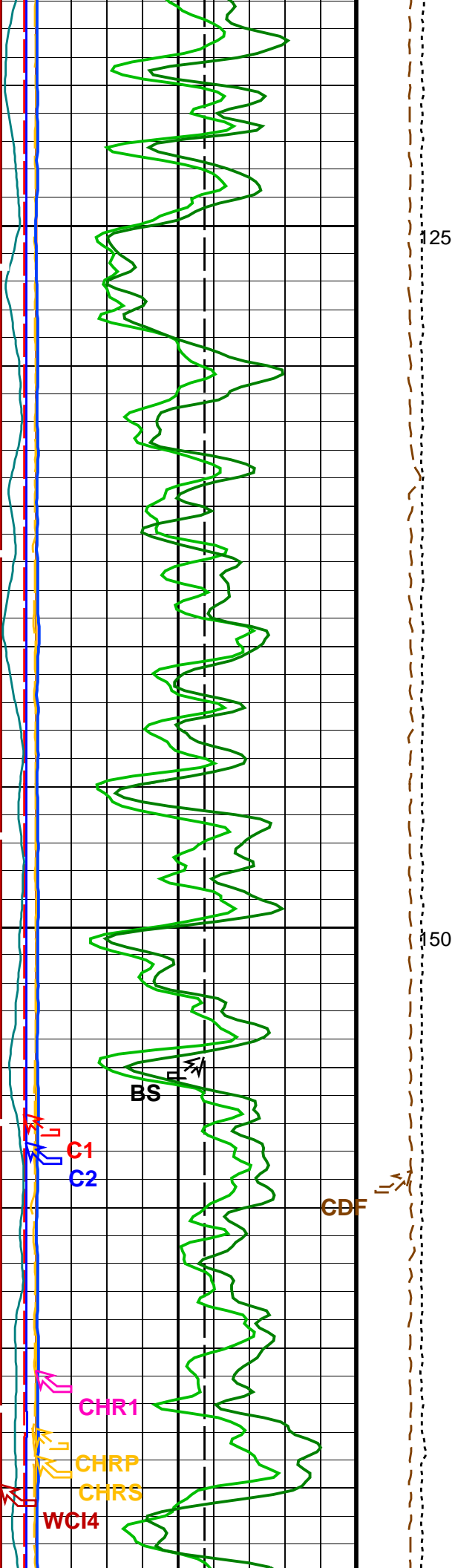
Sea Floor  
0

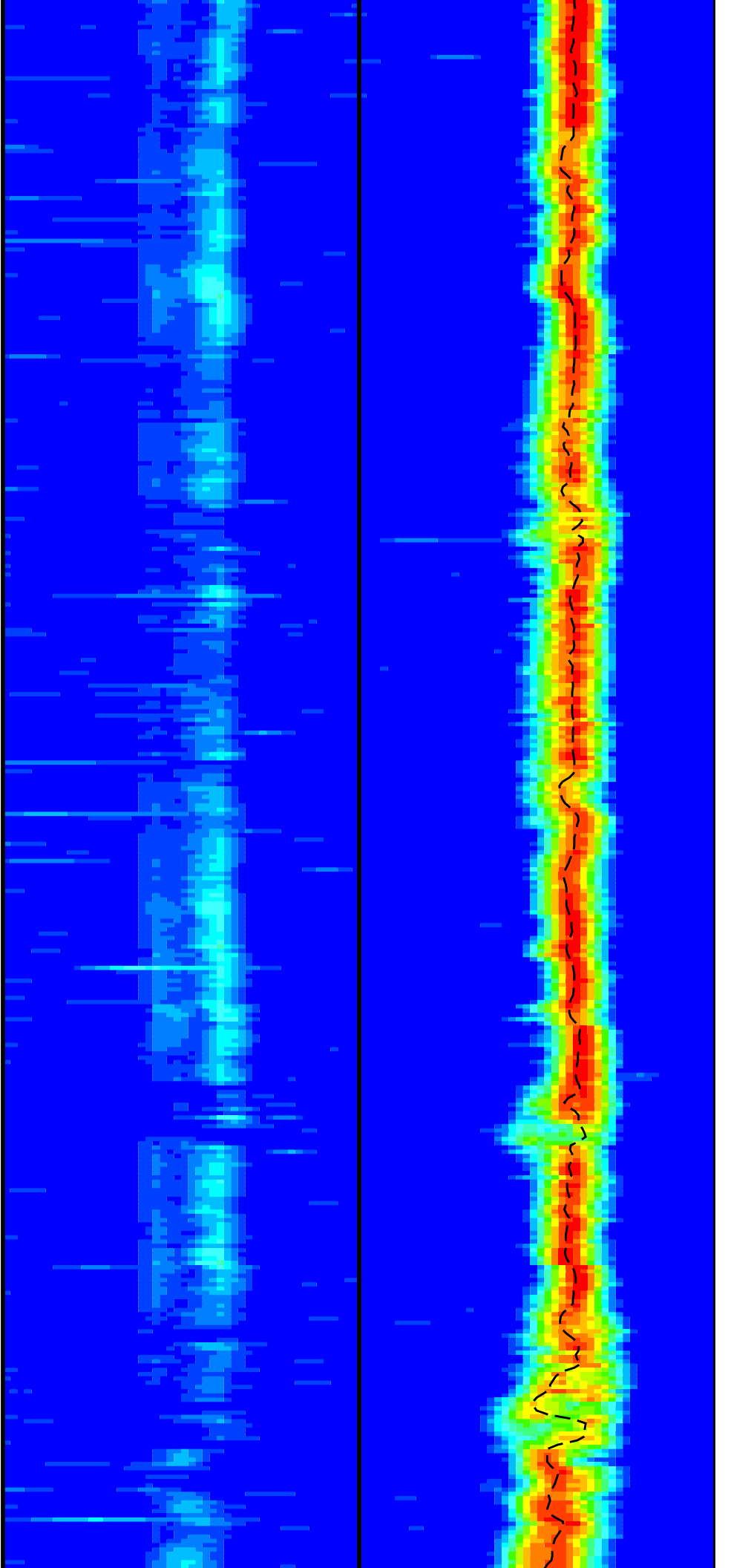
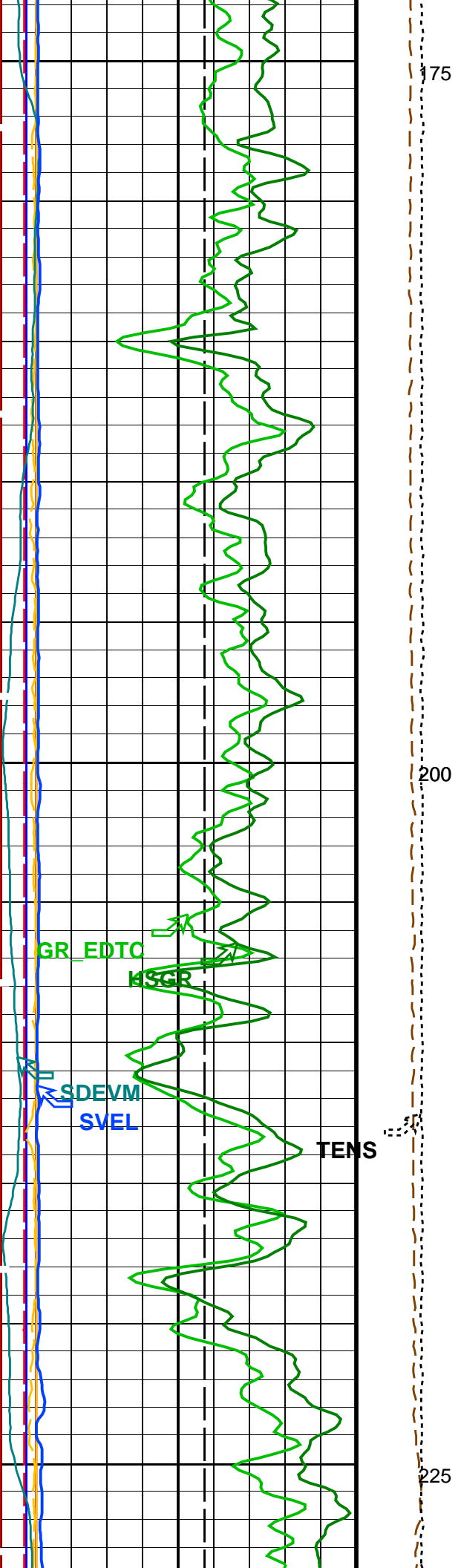
50

25

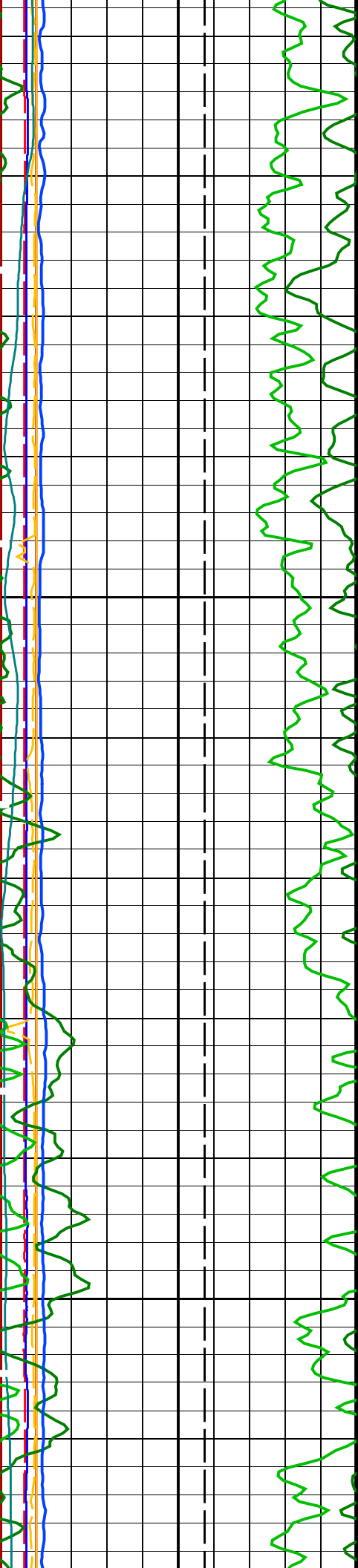






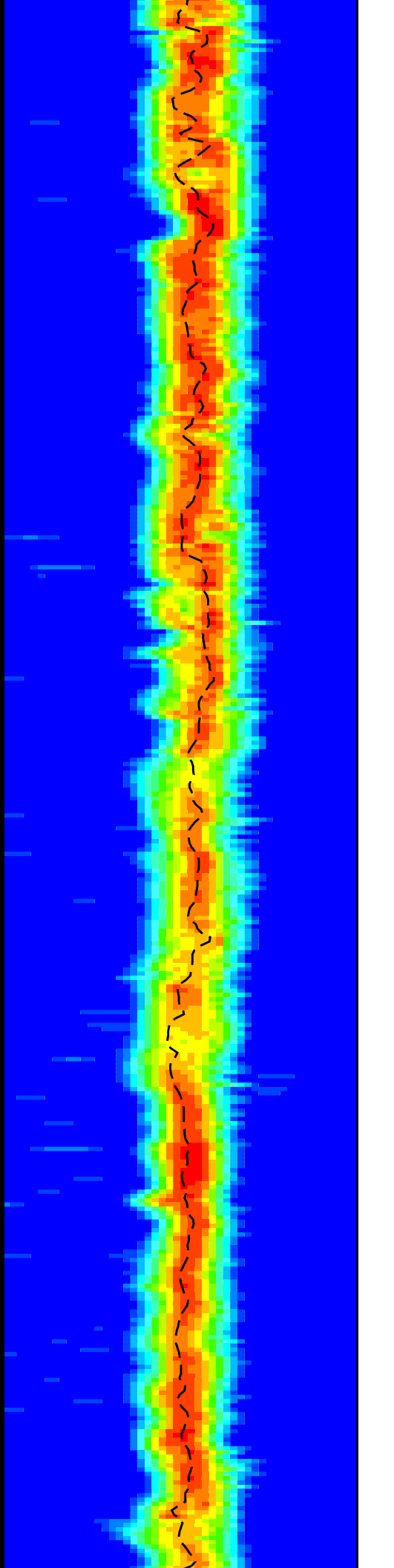
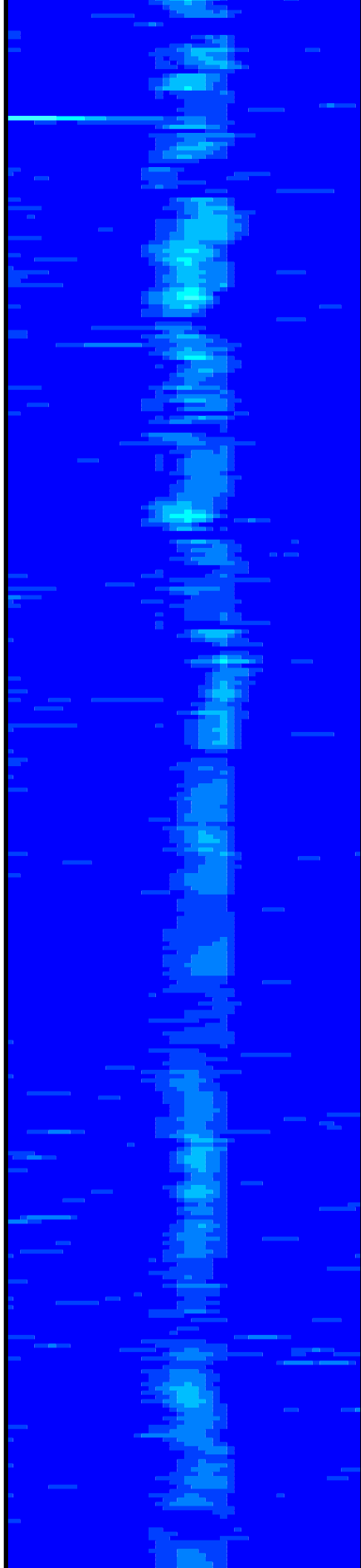


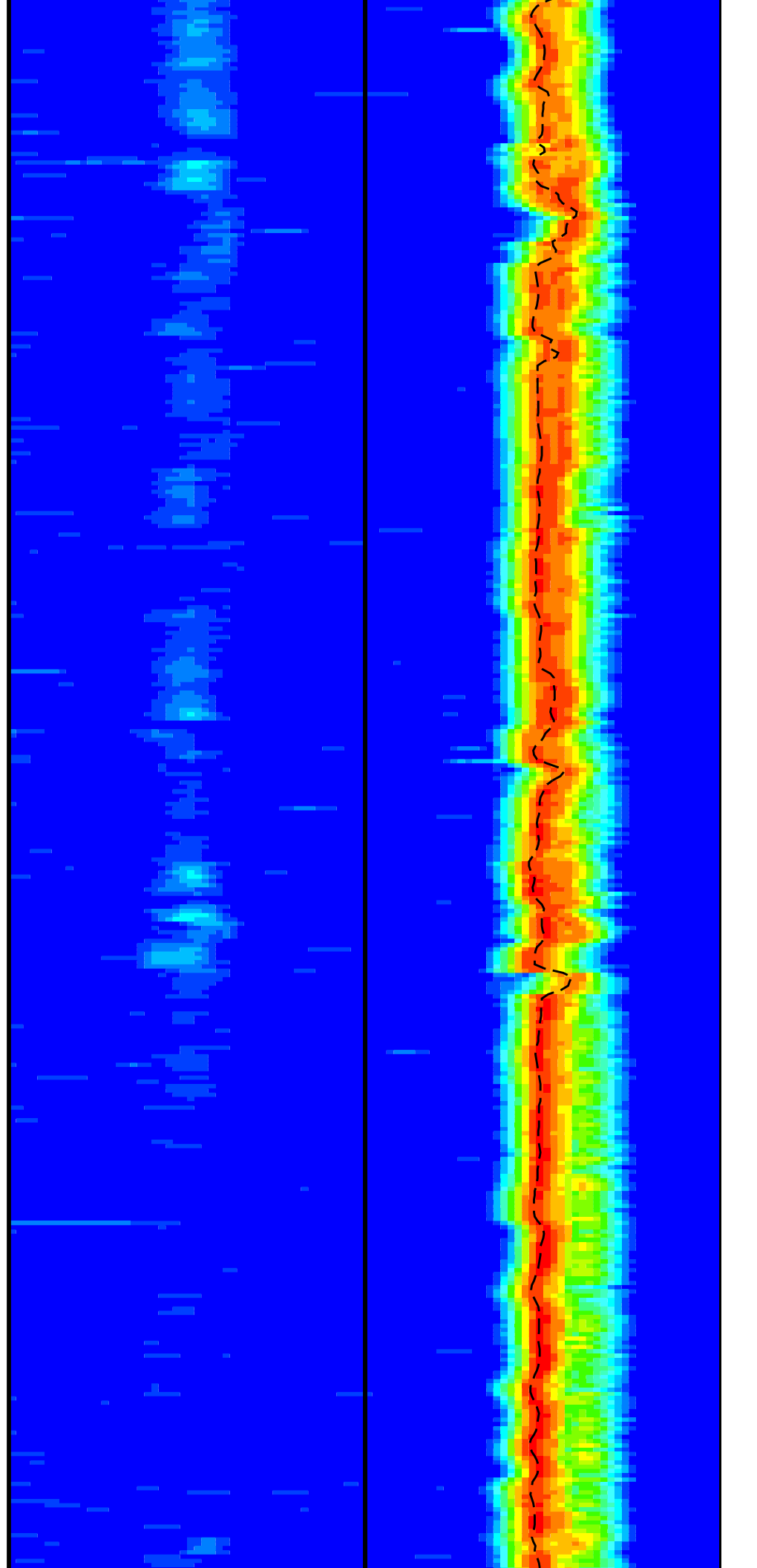
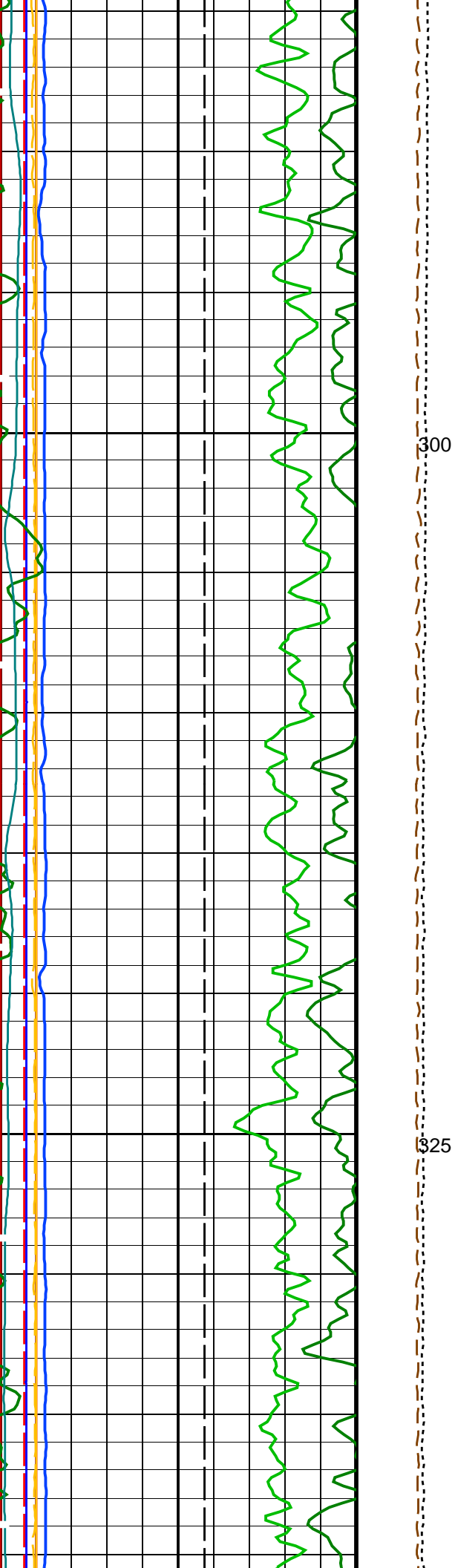


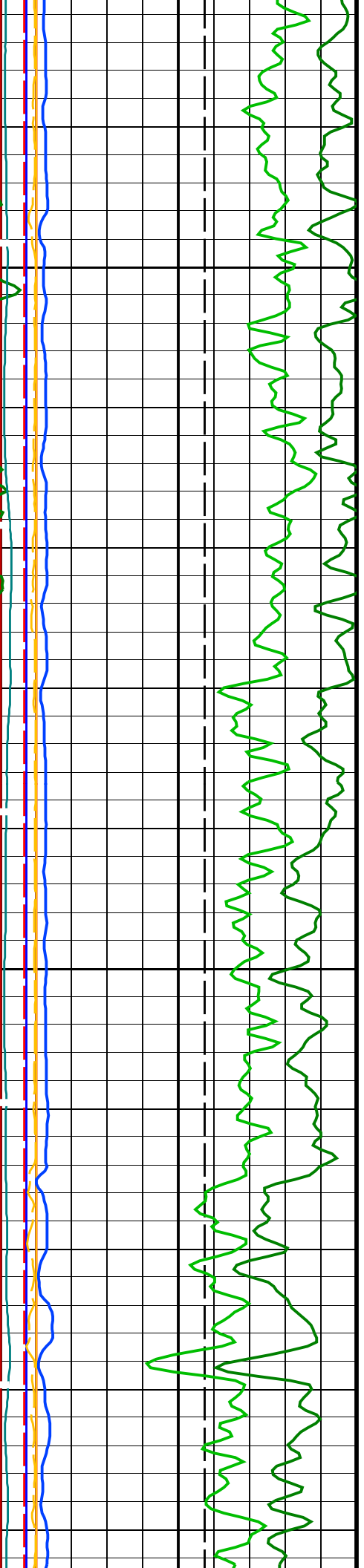


250

275

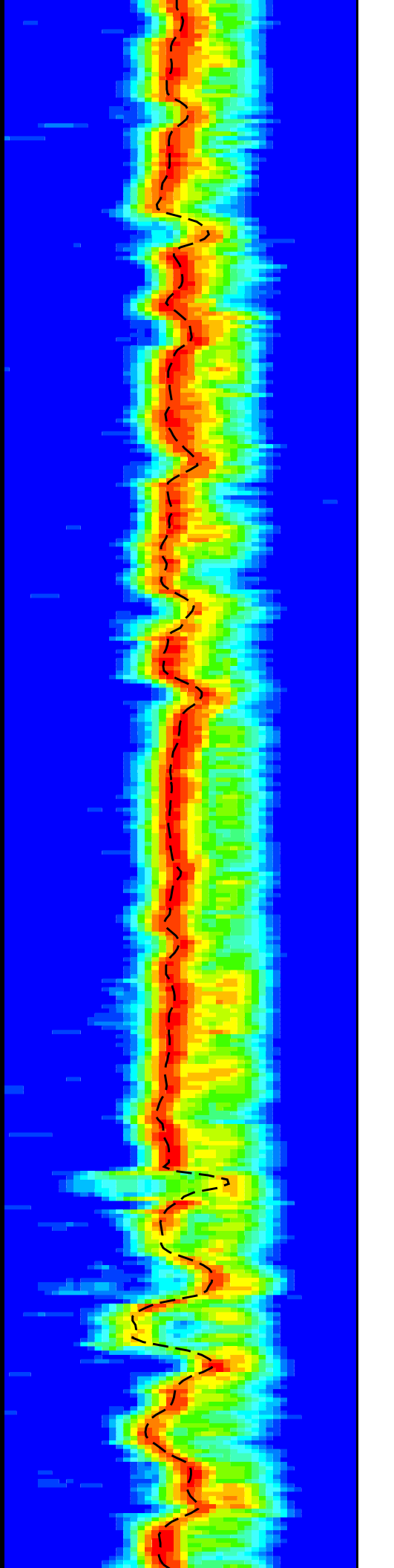
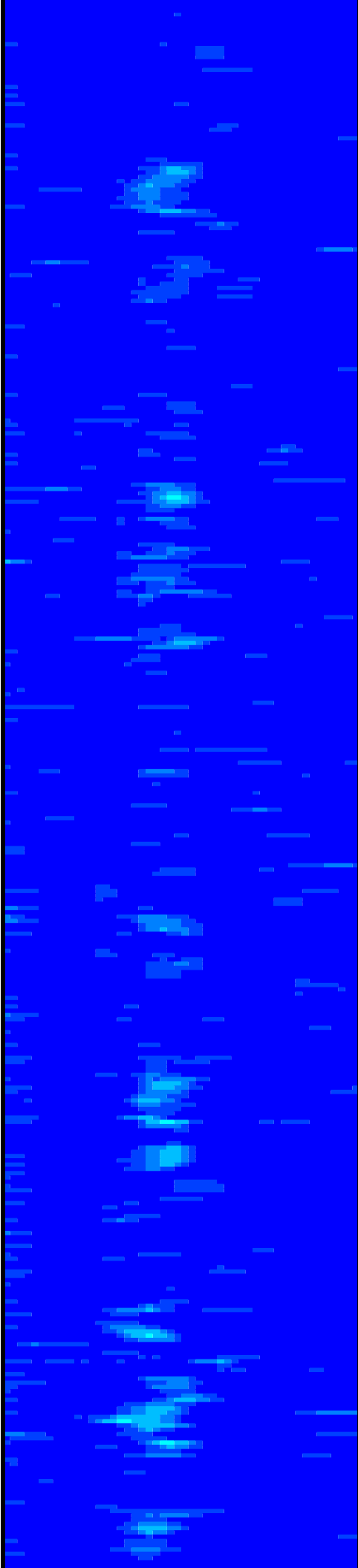


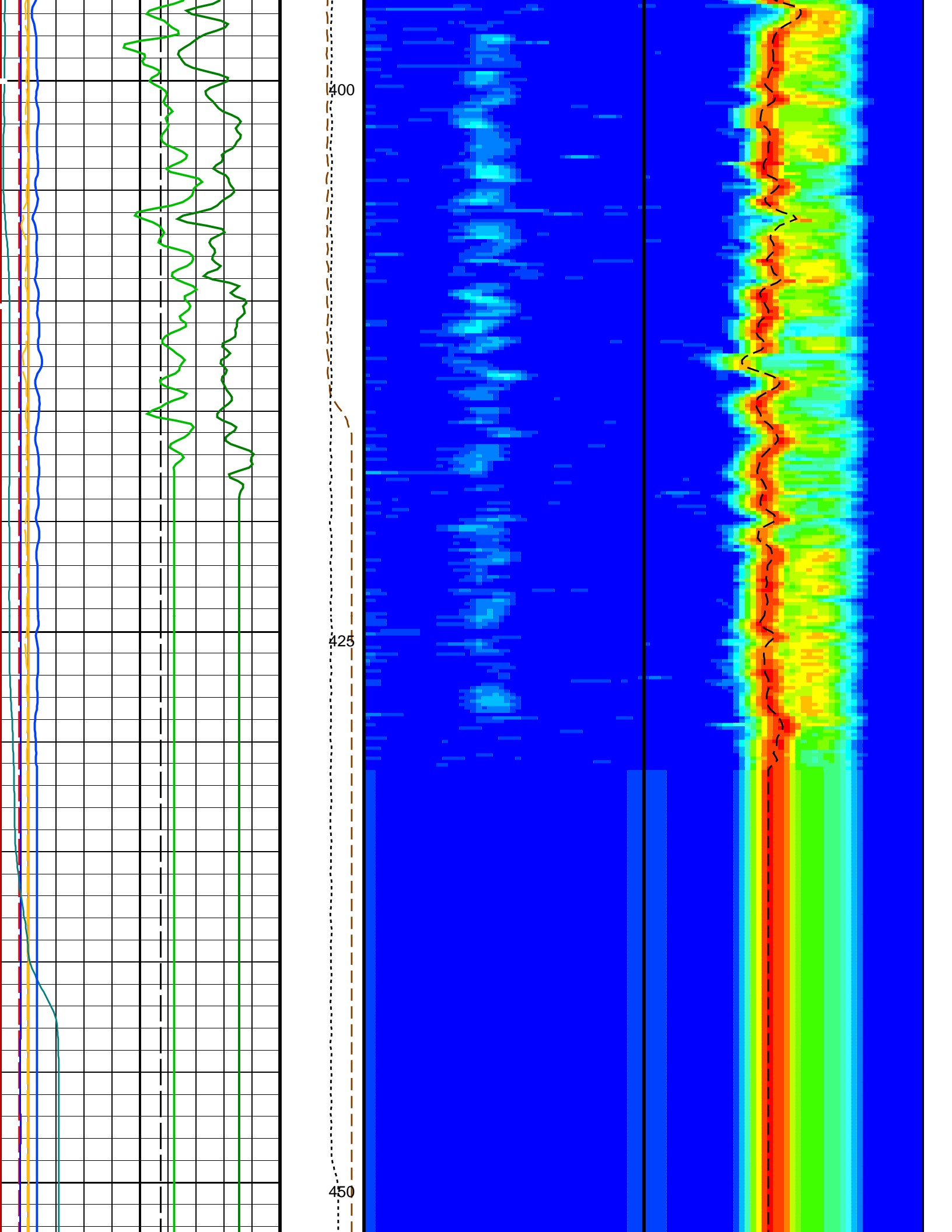


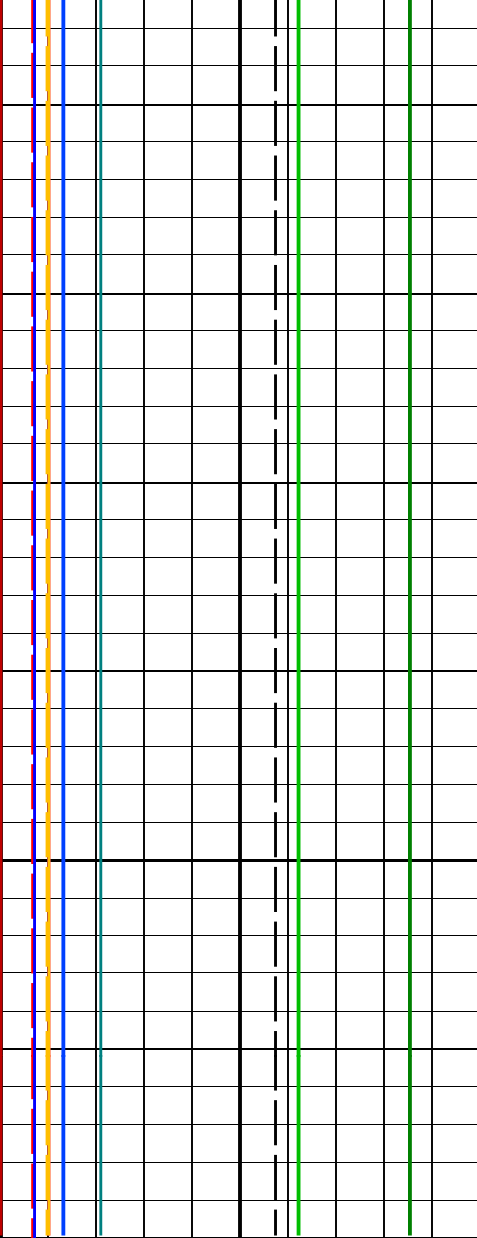


350

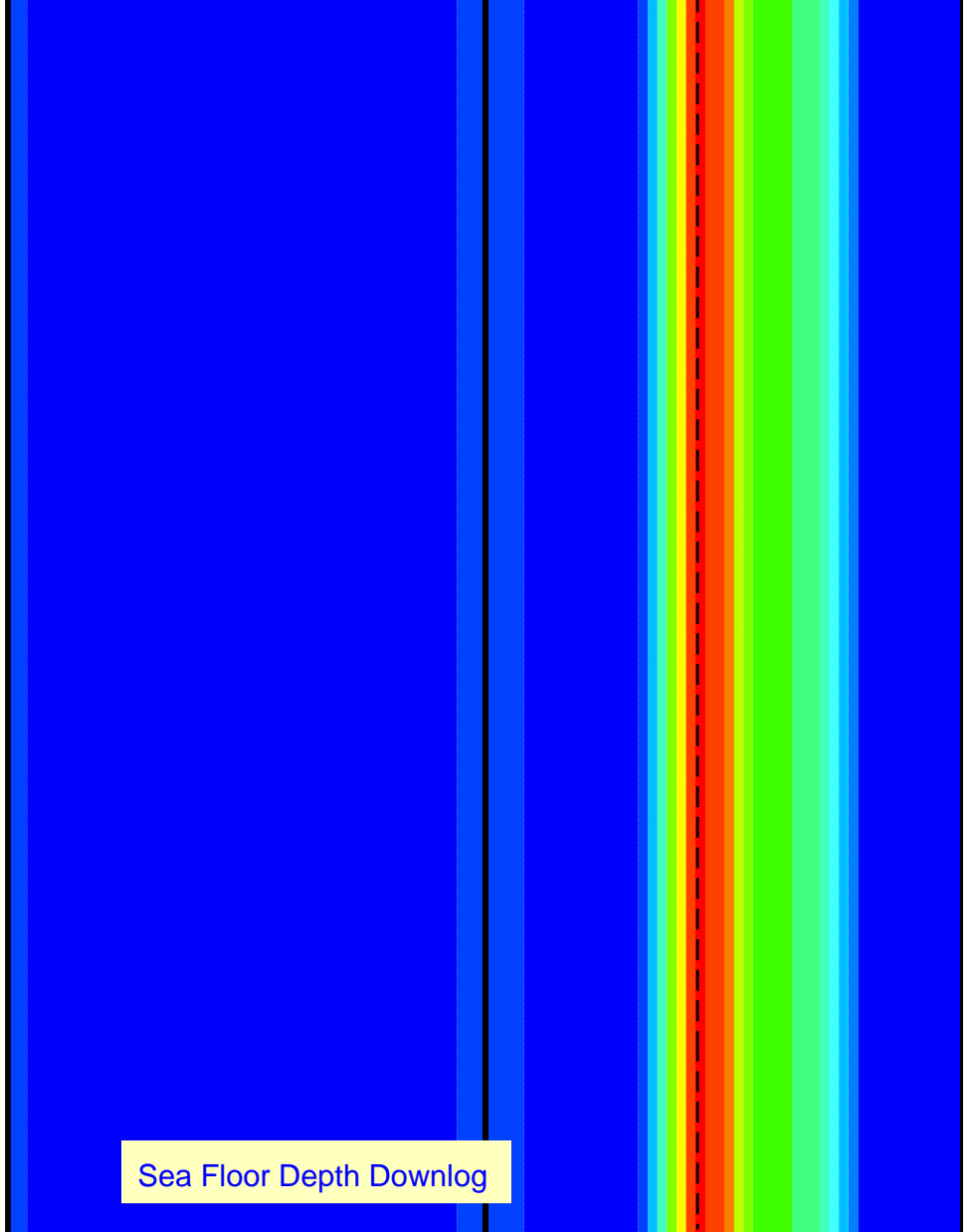
375



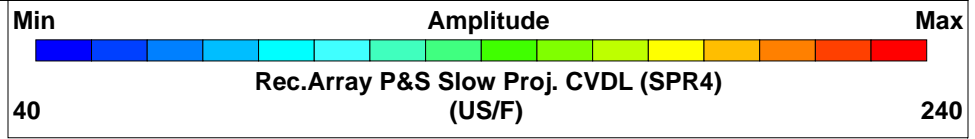
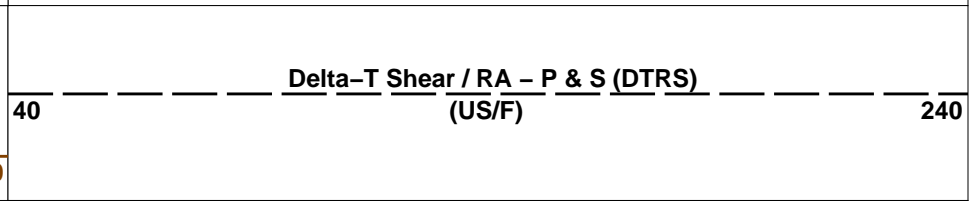
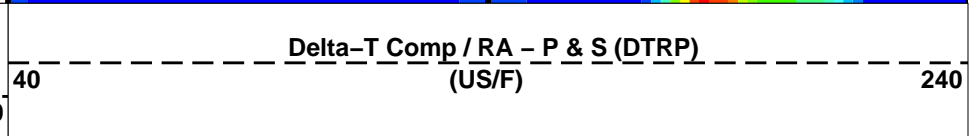
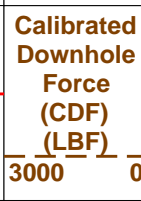
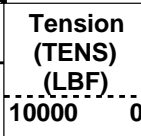
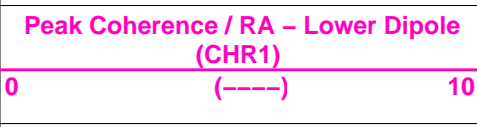
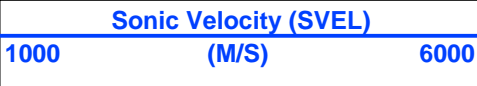
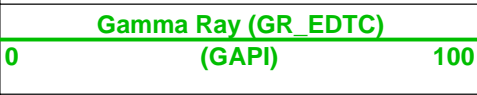
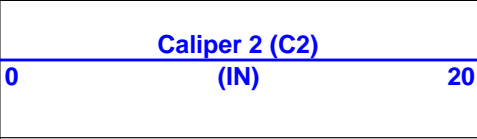
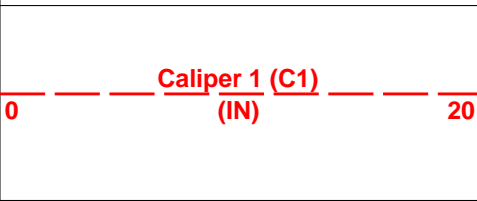
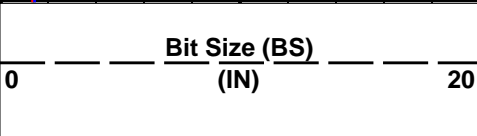




475



Sea Floor Depth Downlog



Peak Coherence / RA - P & S Comp (CHRP)	0	(----)	10
Peak Coherence / RA - P & S Shear (CHRS)	-1	(----)	9
Waveform Data Copy Indicator 4 - Monopole P&S (WCI4)	0	(----)	10
HNGS Spectroscopy Gamma Ray (HSGR)	0	(GAPI)	100

PIP SUMMARY

Time Mark Every 60 S

**OP System Version: 19C0-187**

MEST-B	19C0-187	DTA-A	19C0-187
DSST-B	19C0-187	HNGC-B	19C0-187
HNGS-BA	19C0-187	EDTC-B	SKK-5169-EDTCB

**Input DLIS Files**

DEFAULT	FMS_DSI_NGS_025PDP	FN:44	PRODUCER	06-Jan-2015 20:09	2416.3 M	2996.0 M
---------	--------------------	-------	----------	-------------------	----------	----------

**Output DLIS Files**

DEFAULT	FMS_DSI_NGS_028PDP	FN:48	PRODUCER	07-Jan-2015 01:56	-94.5 M	485.1 M
---------	--------------------	-------	----------	-------------------	---------	---------

Company: Integrated Ocean Discovery Program

Well: Expedition 353, Site U1445A BB-5