

## Input DLIS Files

DEFAULT      DSI\_HRLA\_LDL\_NGS\_015LUP      FN:22    PRODUCER    07-Mar-2017 09:26    4784.6 M      3755.6 M

## Output DLIS Files

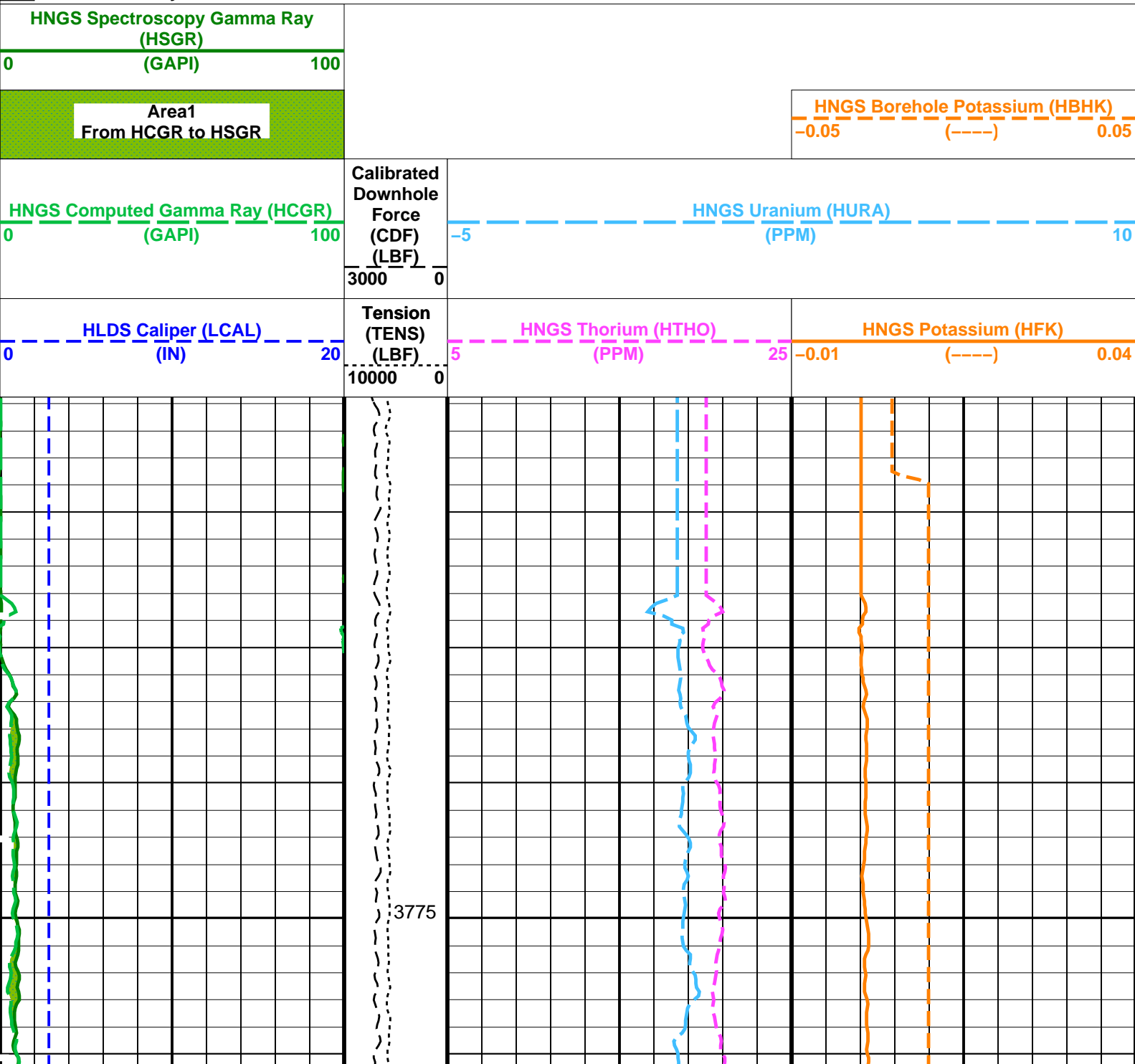
DEFAULT      DSI\_HRLA\_LDL\_NGS\_017PUP      FN:26    PRODUCER    07-Mar-2017 13:04    4784.6 M      3755.7 M  
 BACKUP      DSI\_HRLA\_LDL\_NGS\_017PUP      FN:27    PRODUCER    07-Mar-2017 13:04    4784.6 M      3755.7 M

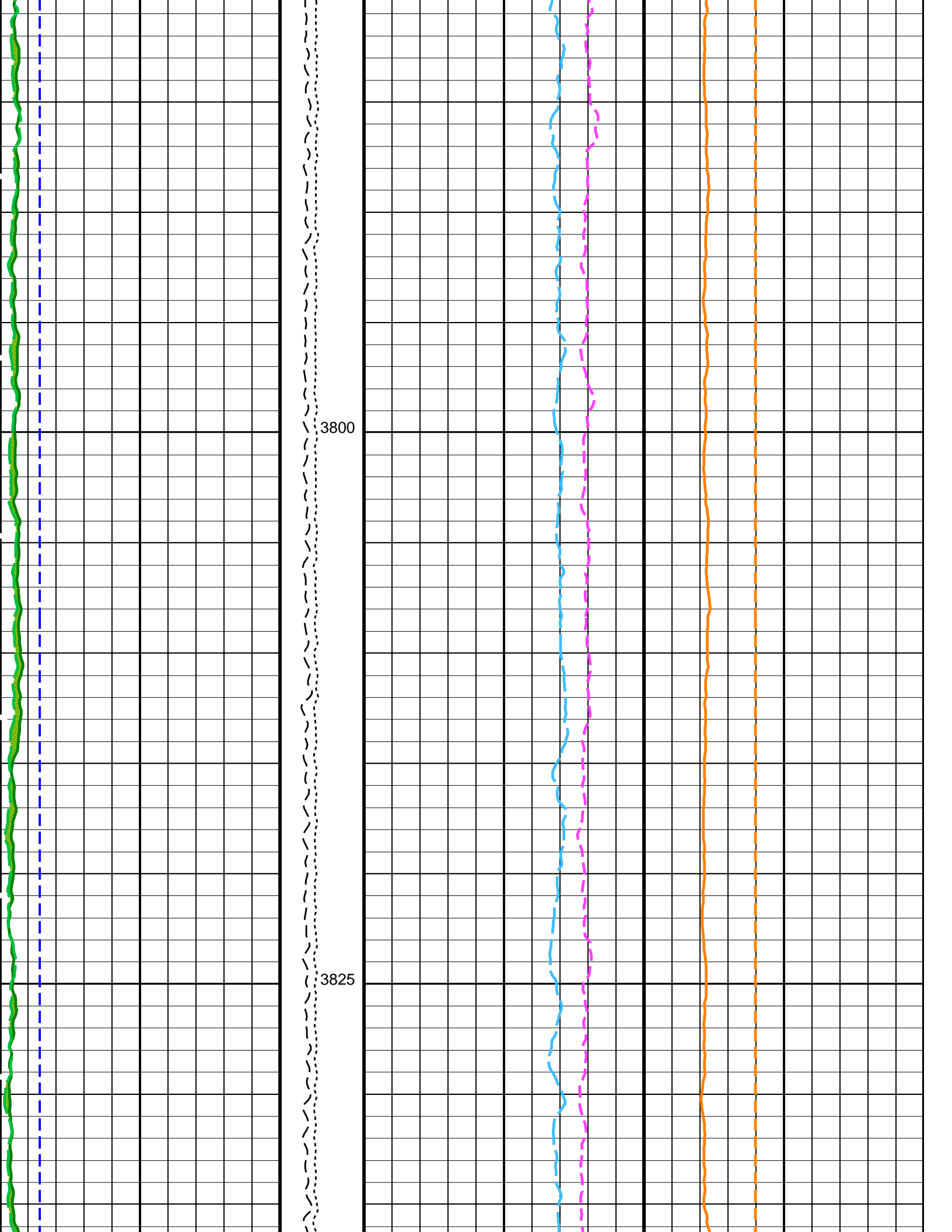
## OP System Version: 19C0-187

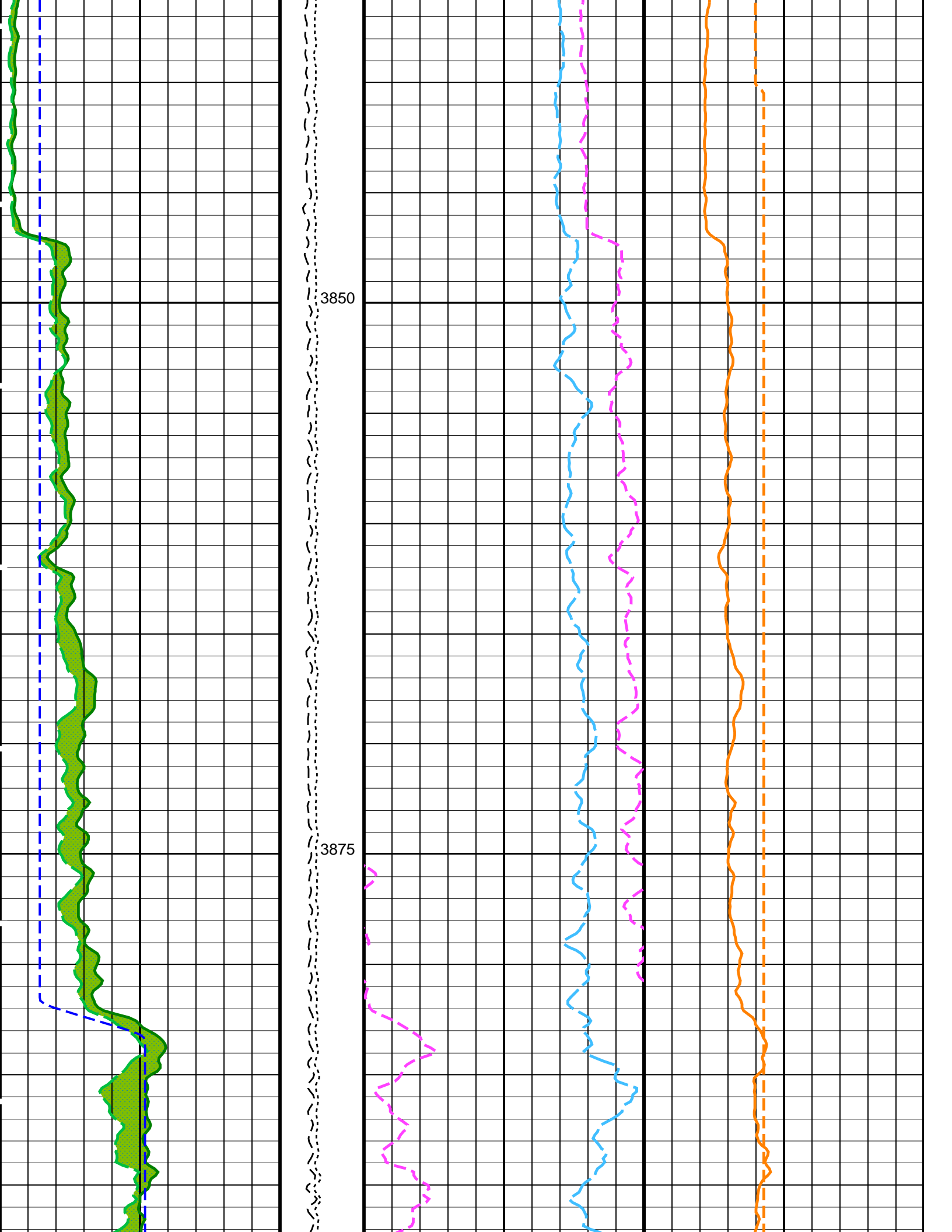
DSST-B	19C0-187	HRLT-B	19C0-187
HLDS	19C0-187	LDSC-B	19C0-187
HNGC-B	19C0-187	HNGS-BA	19C0-187
EDTC-B	SKK-5169-EDTCB		

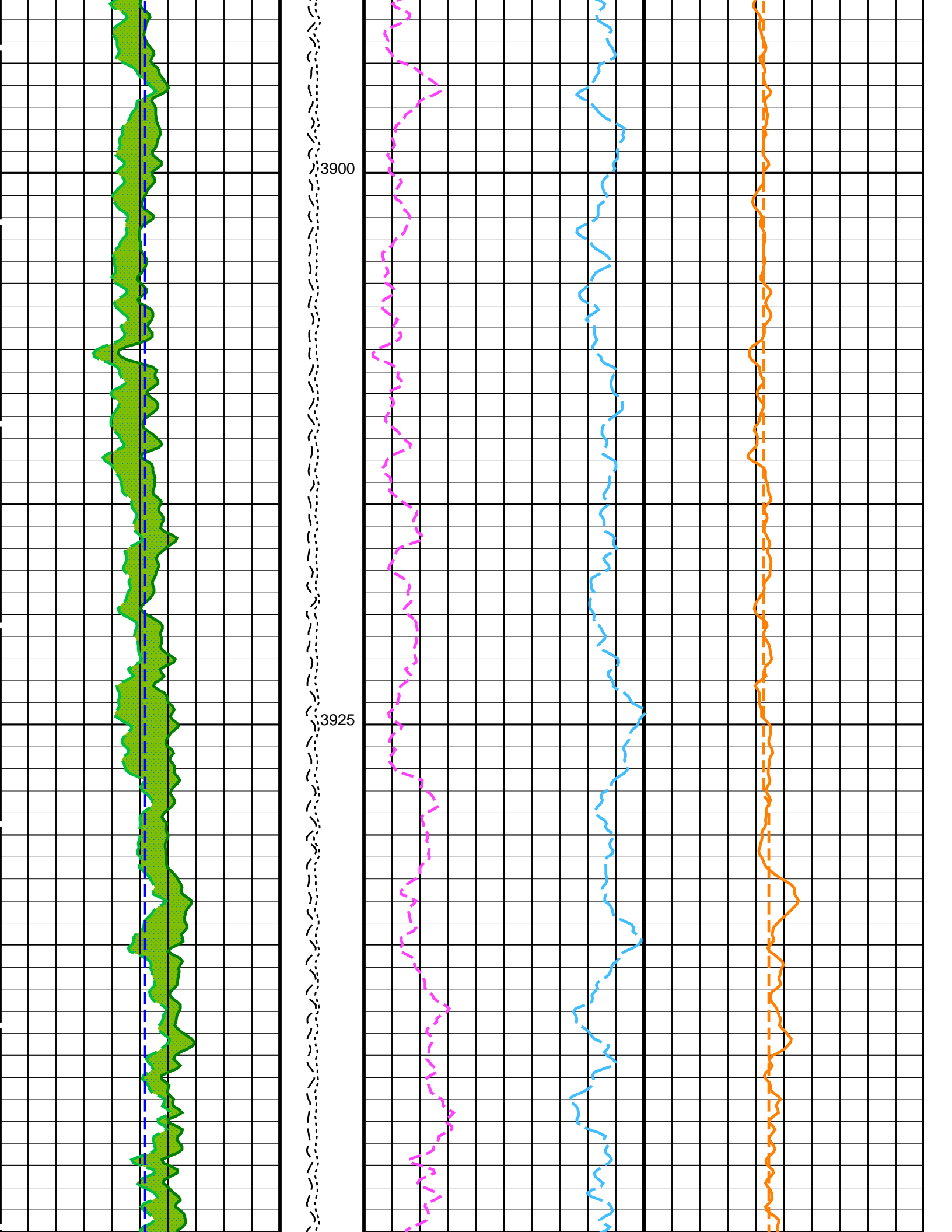
### PIP SUMMARY

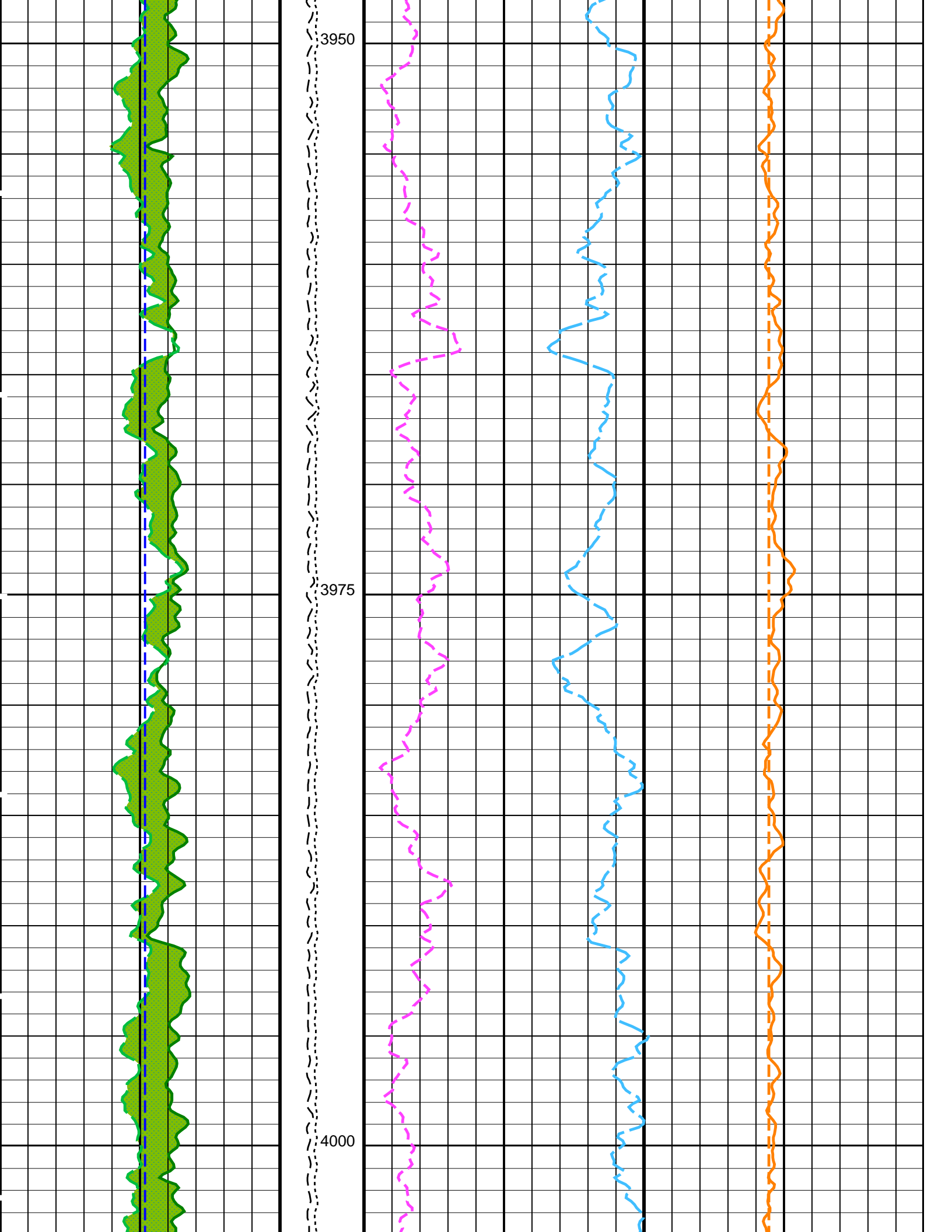
Time Mark Every 60 S

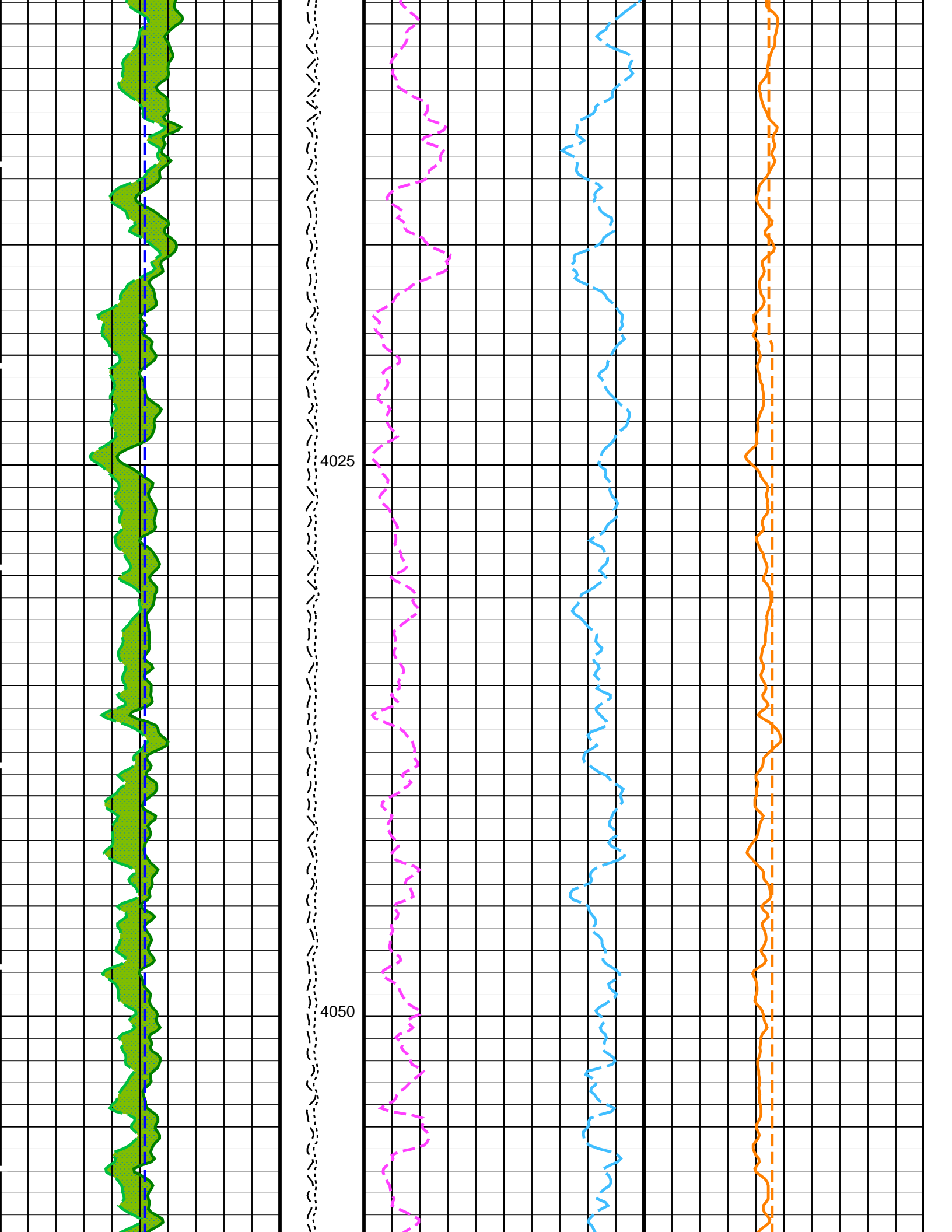


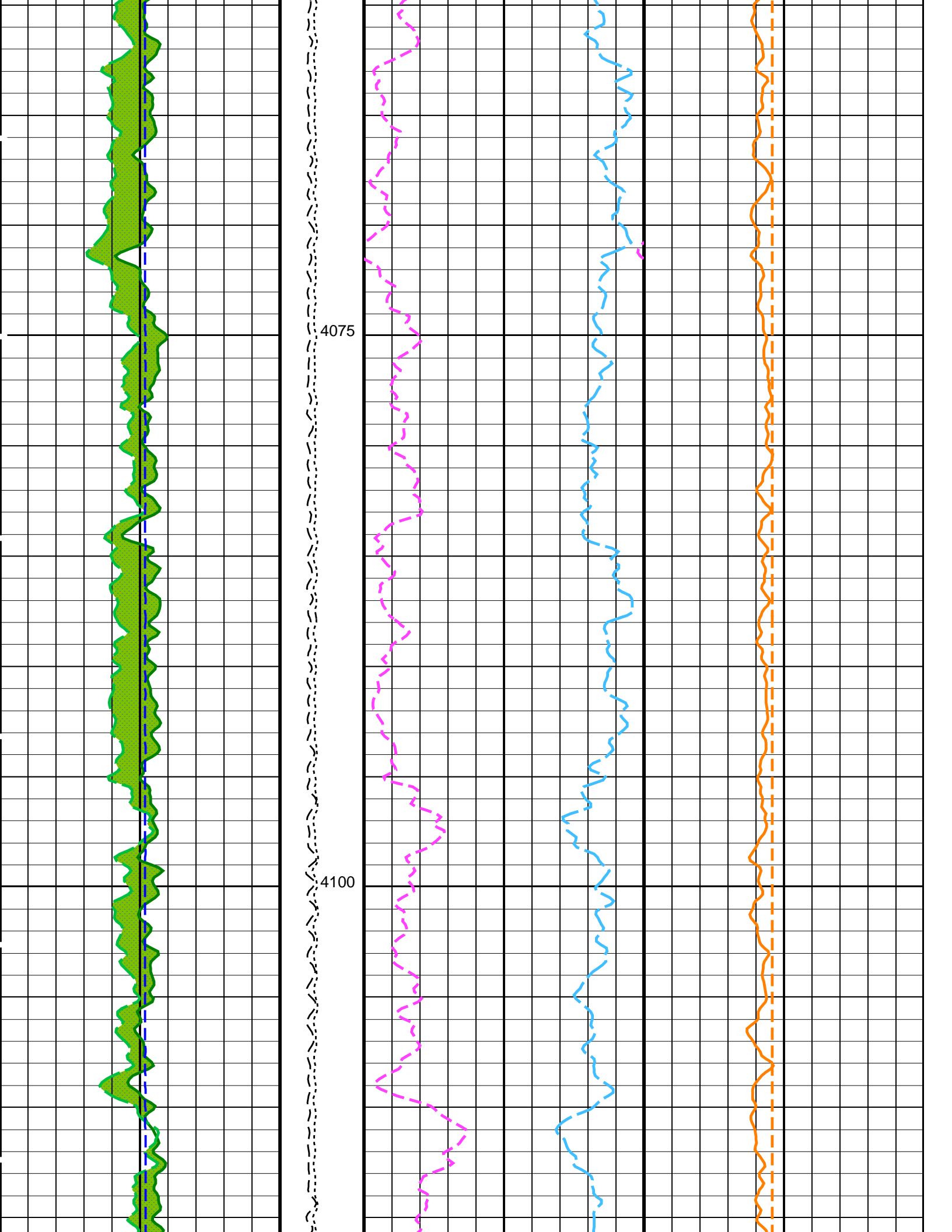


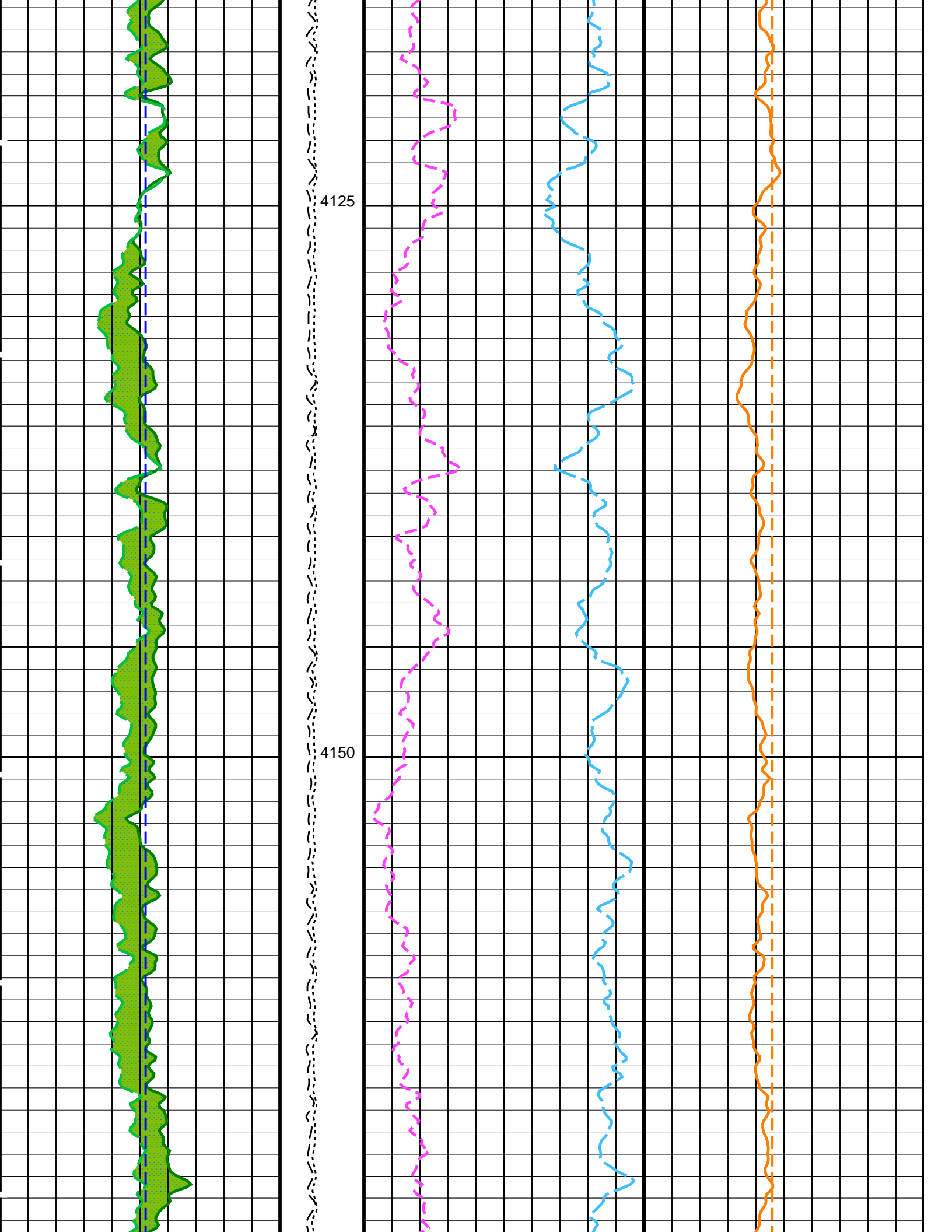




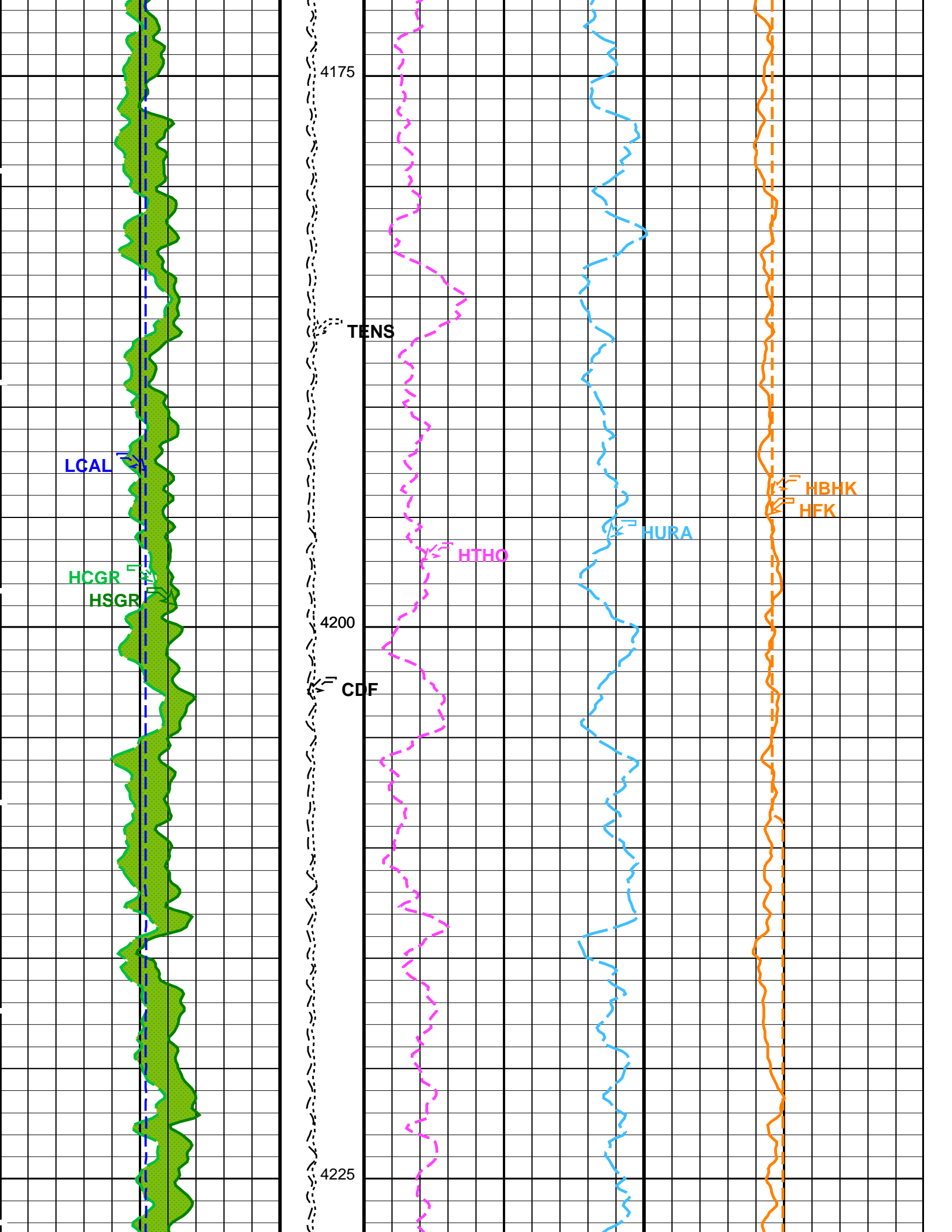


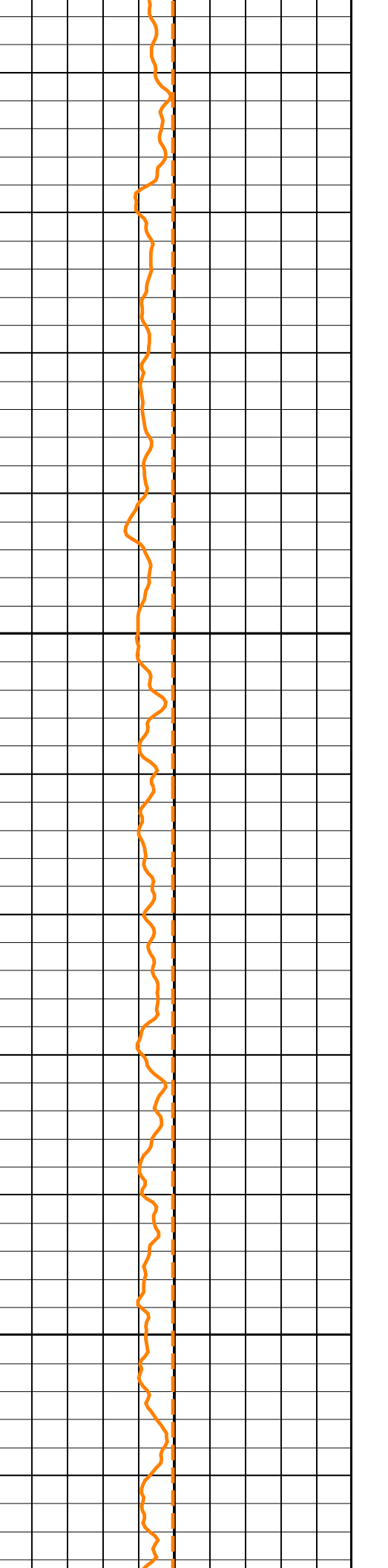
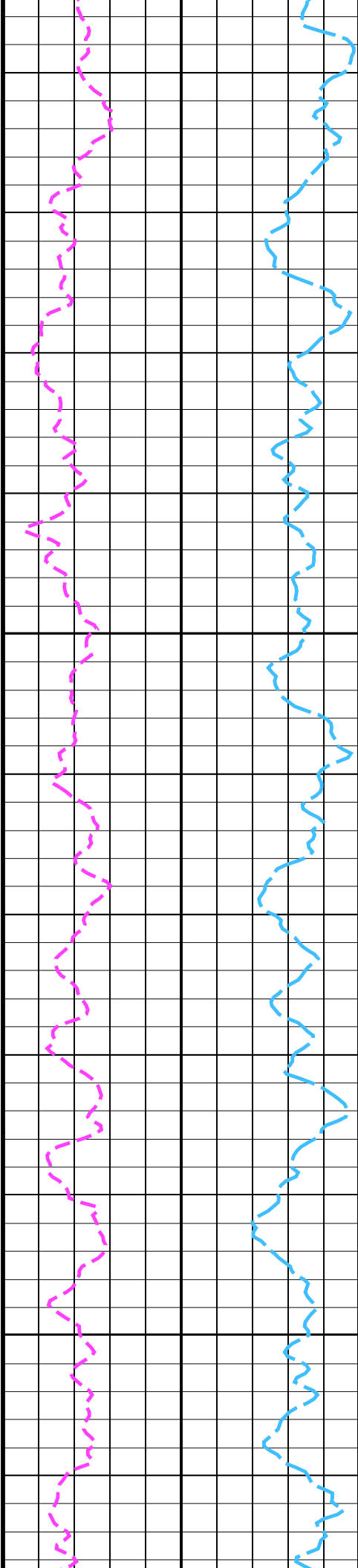
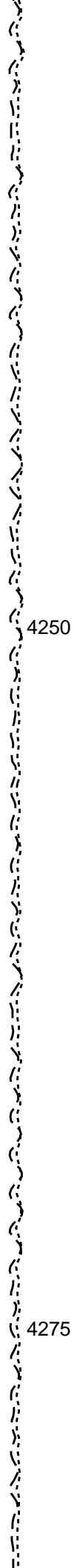
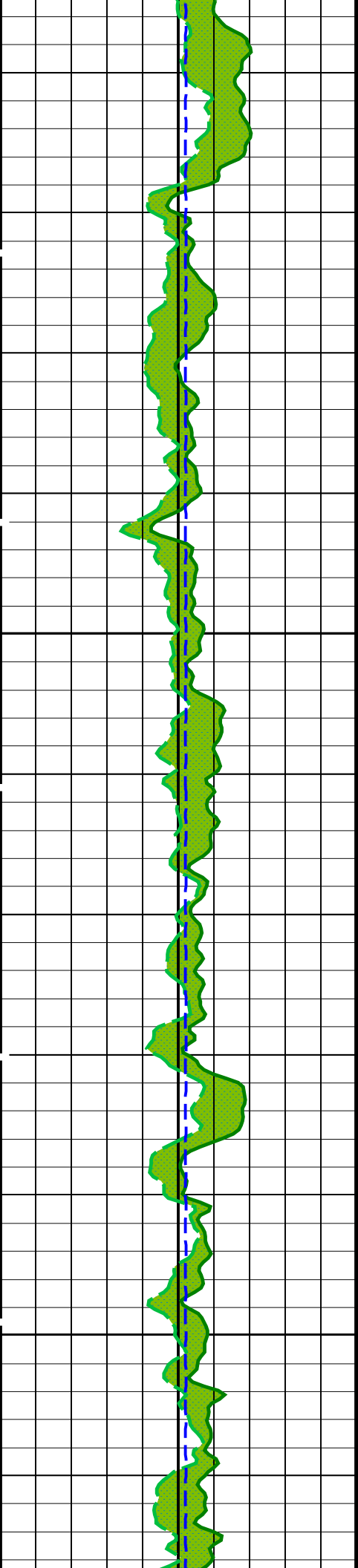


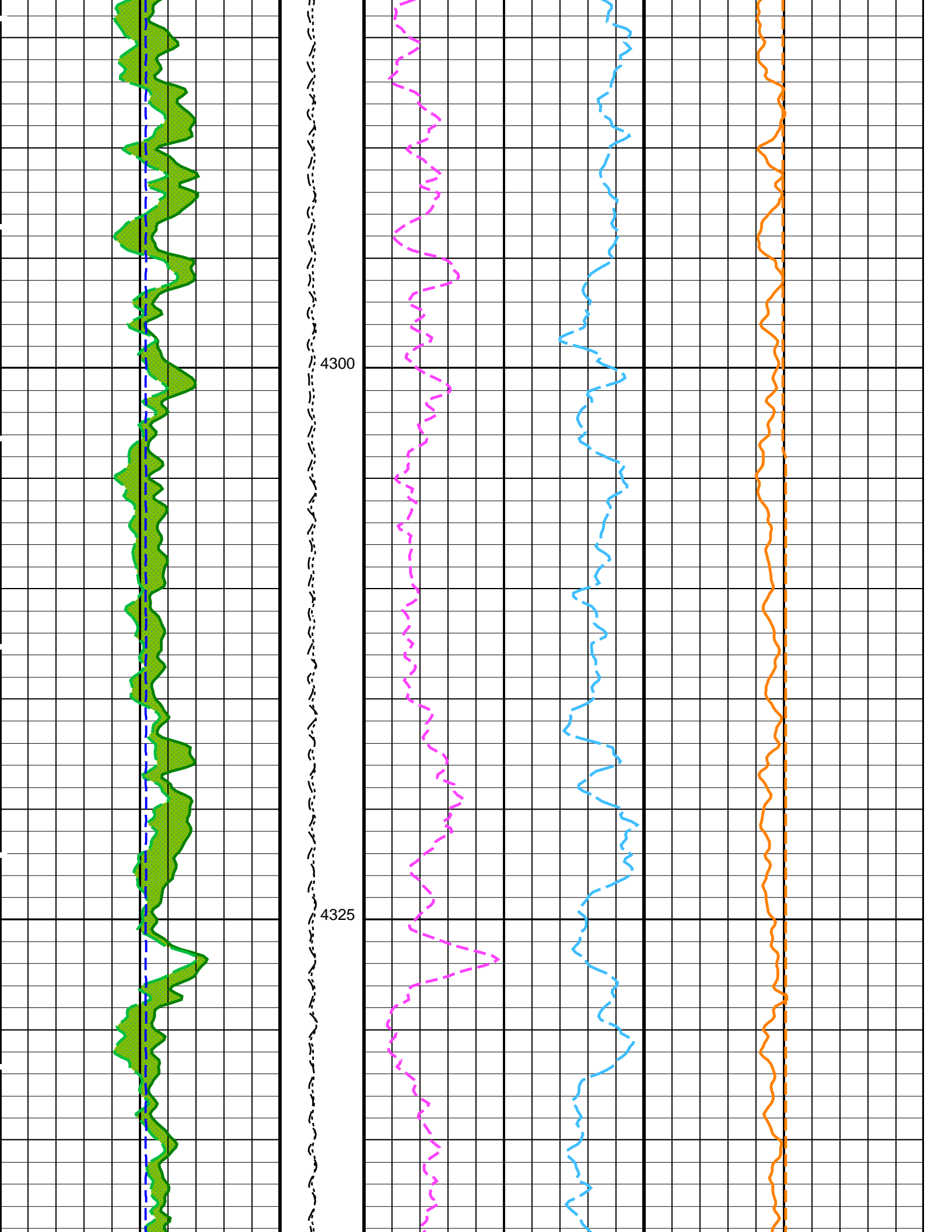


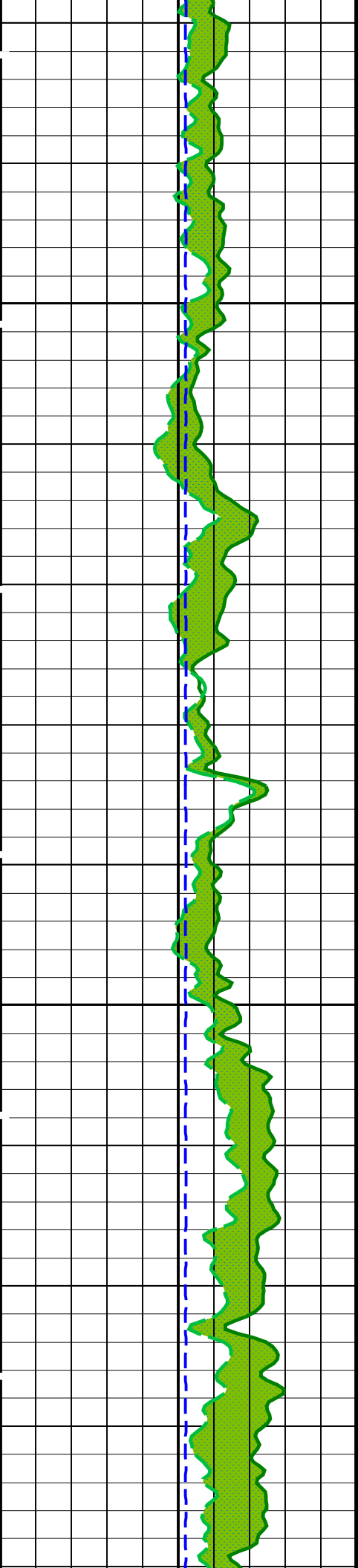






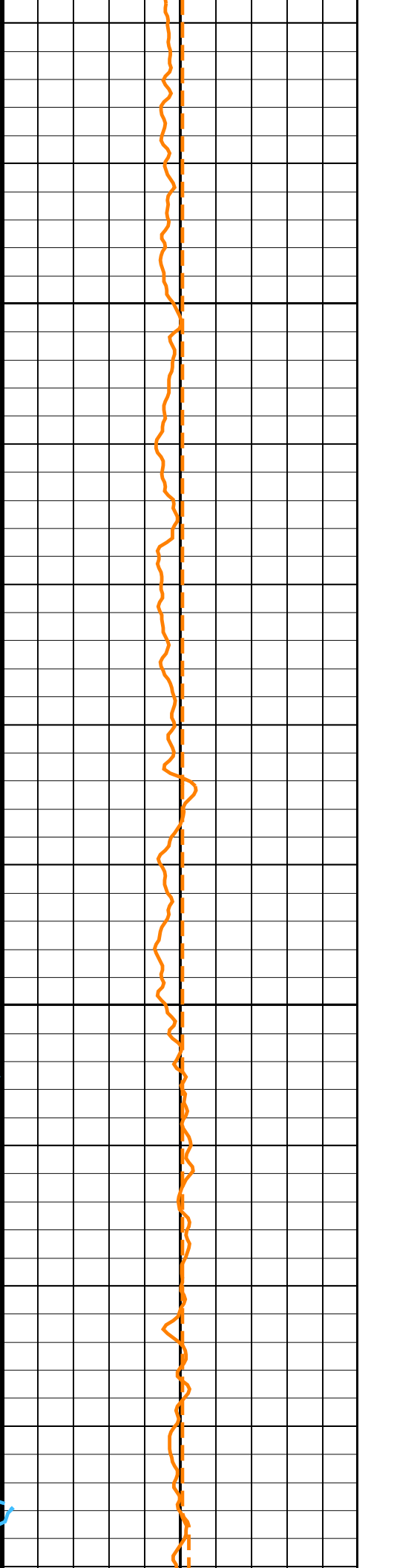
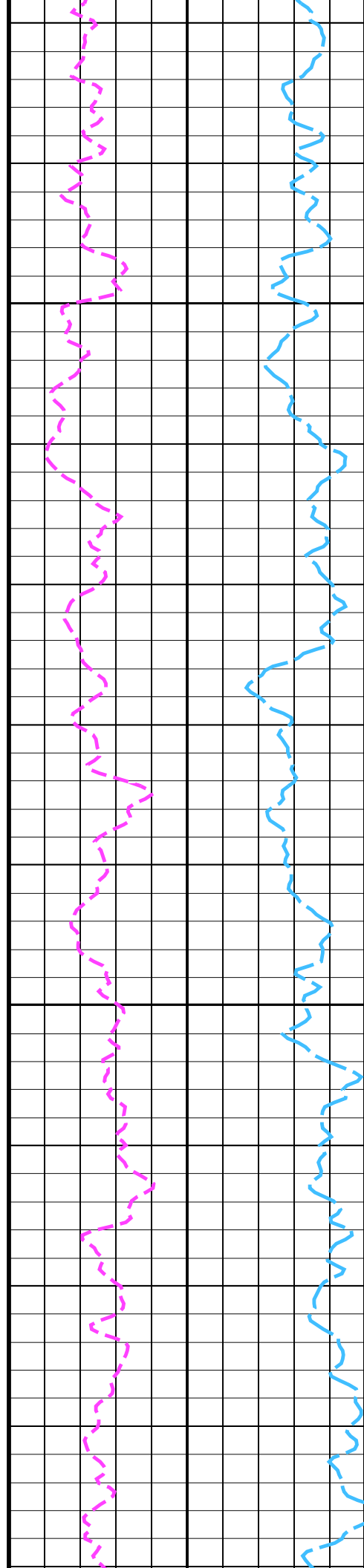


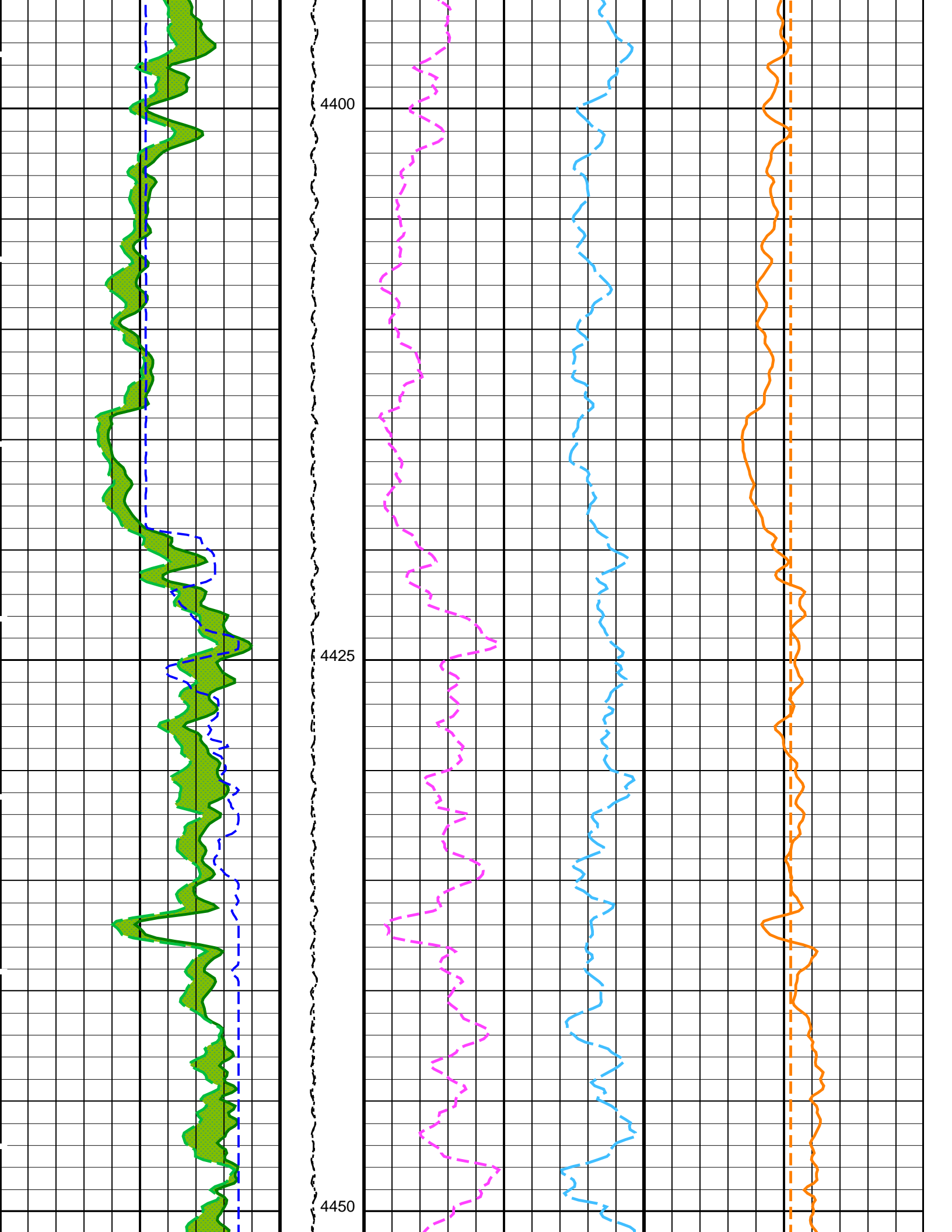


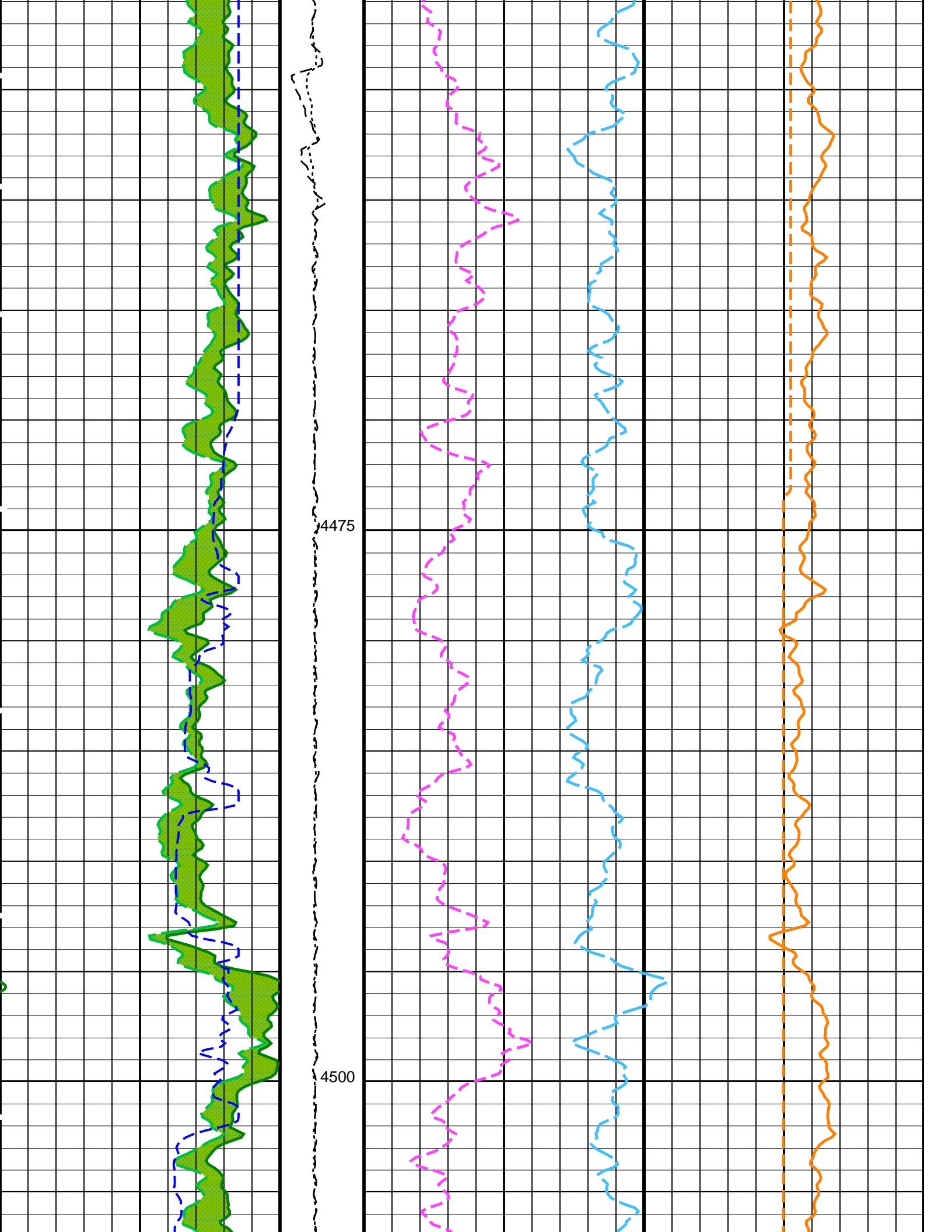


4350

4375

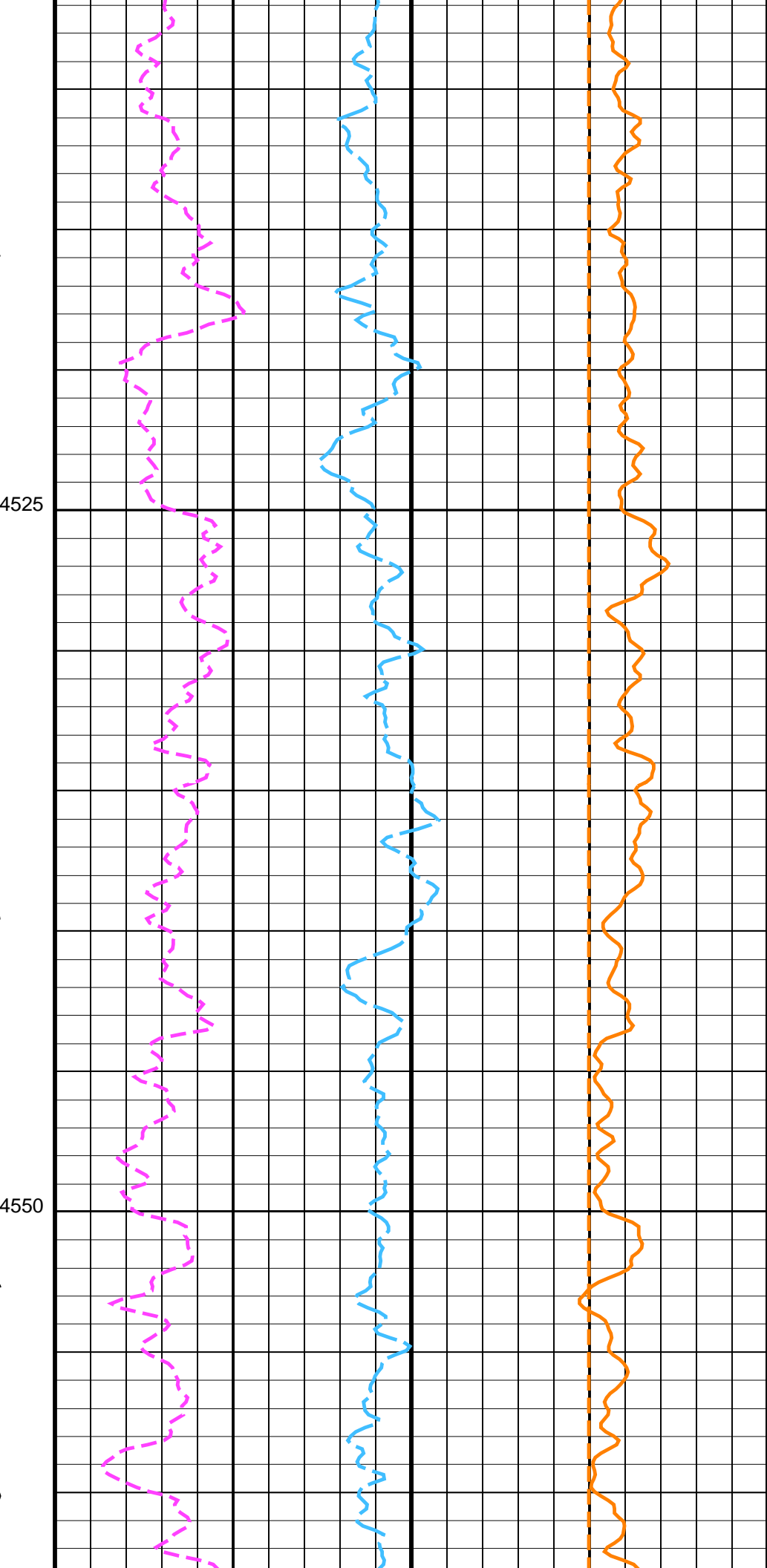
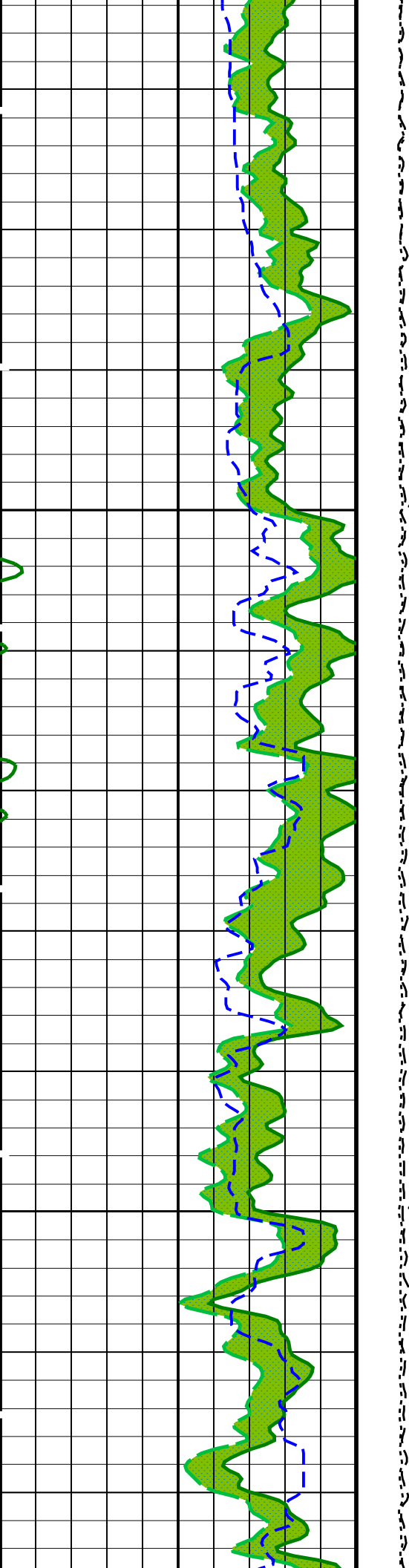


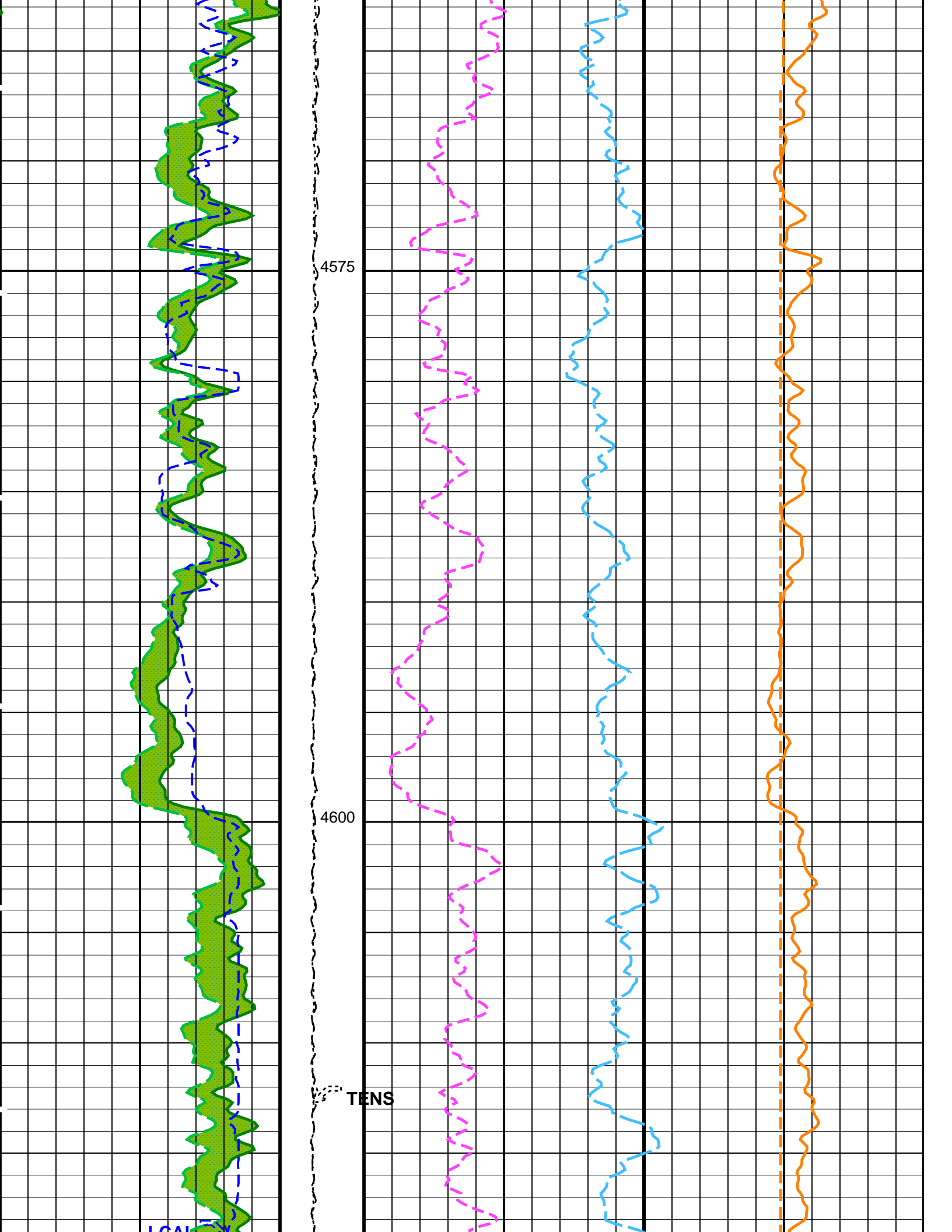




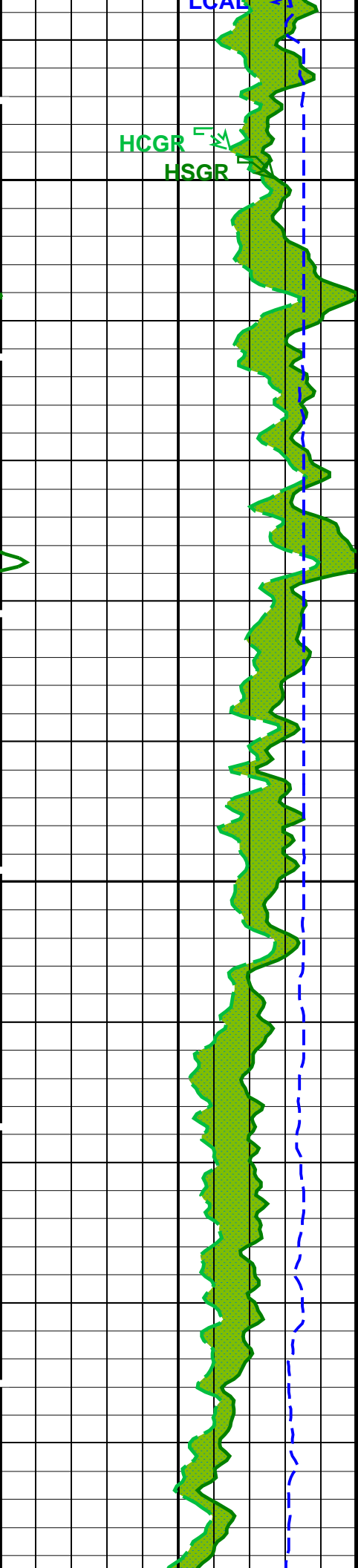
4475

4500

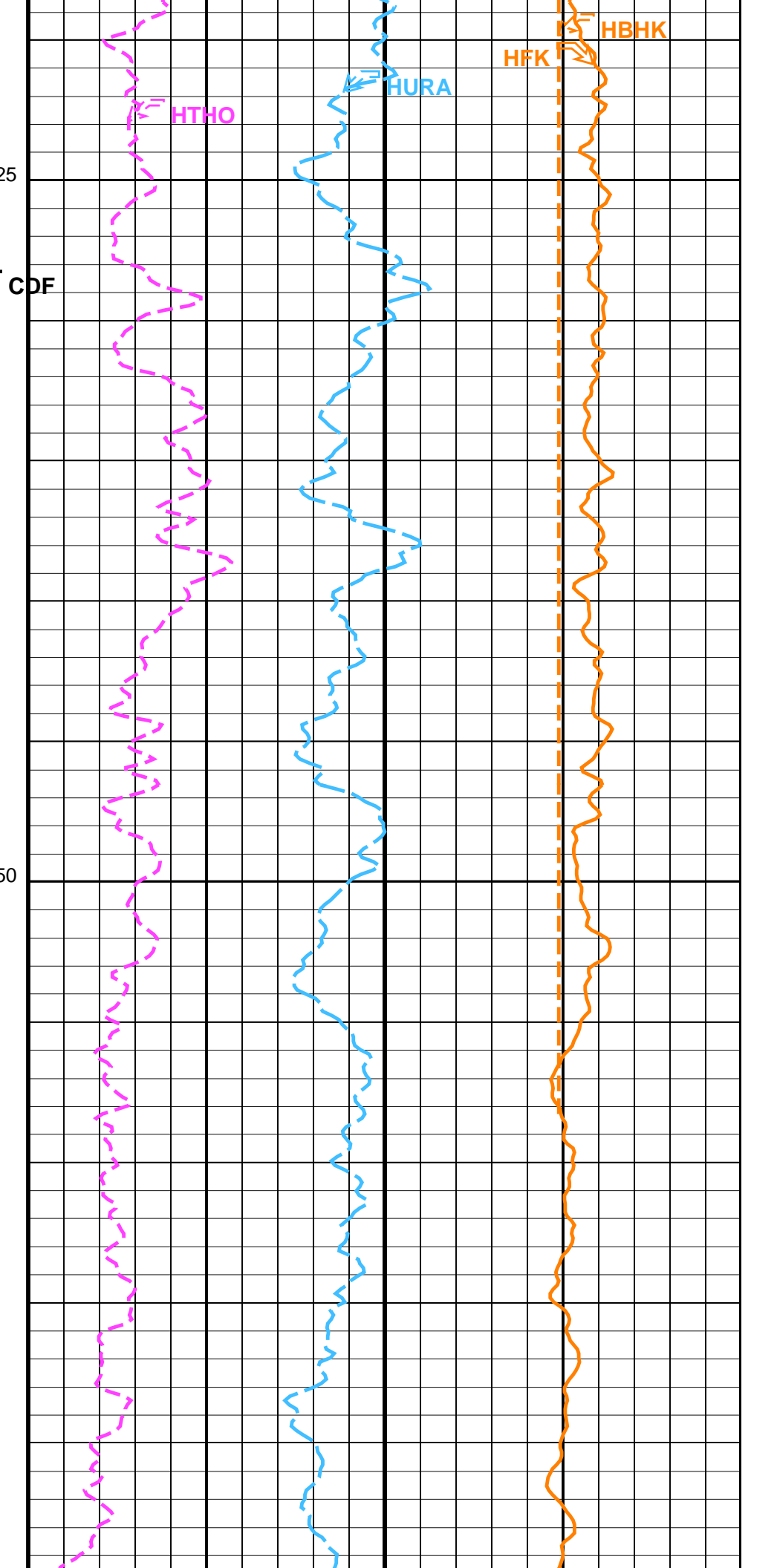


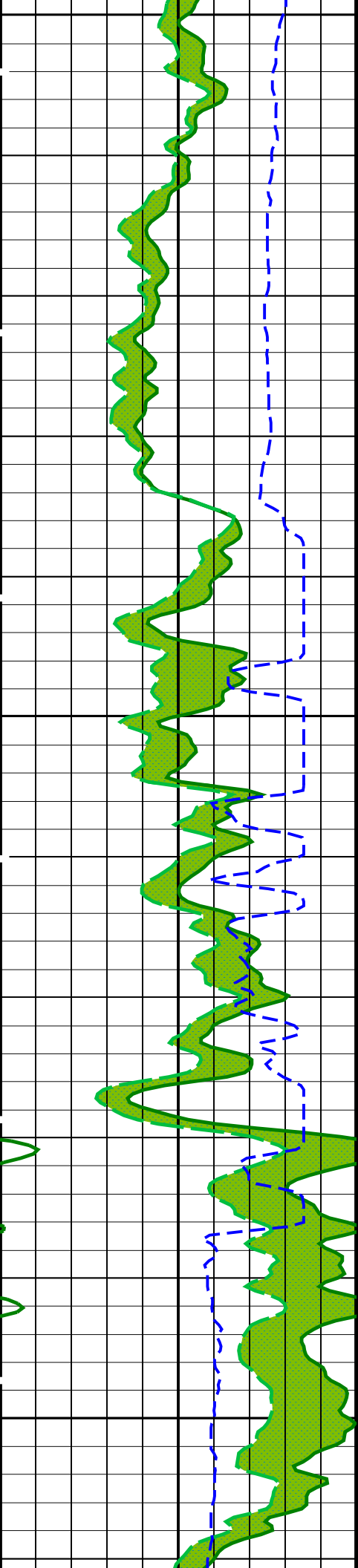




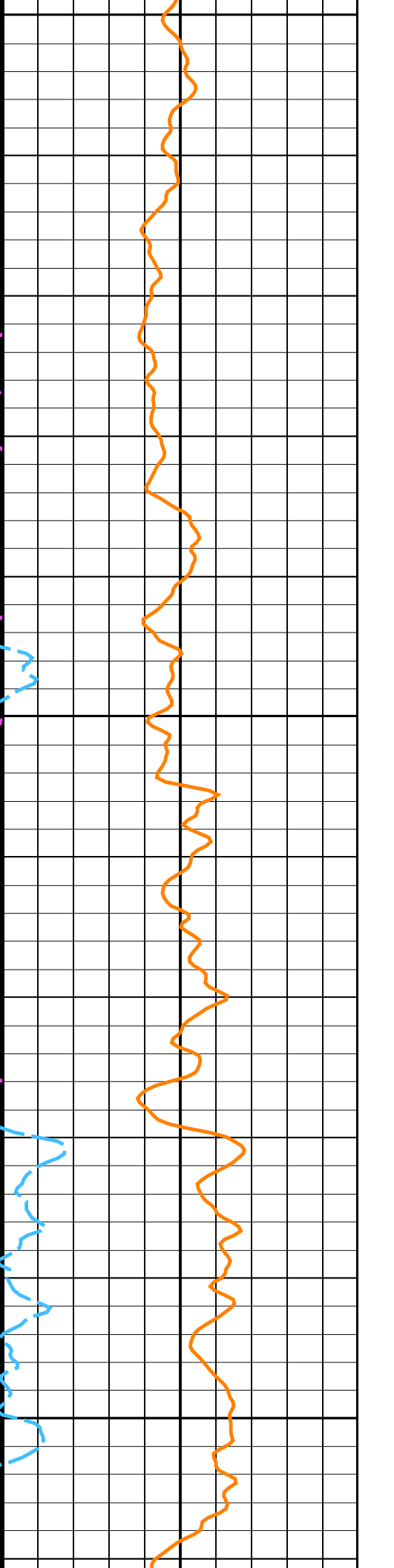
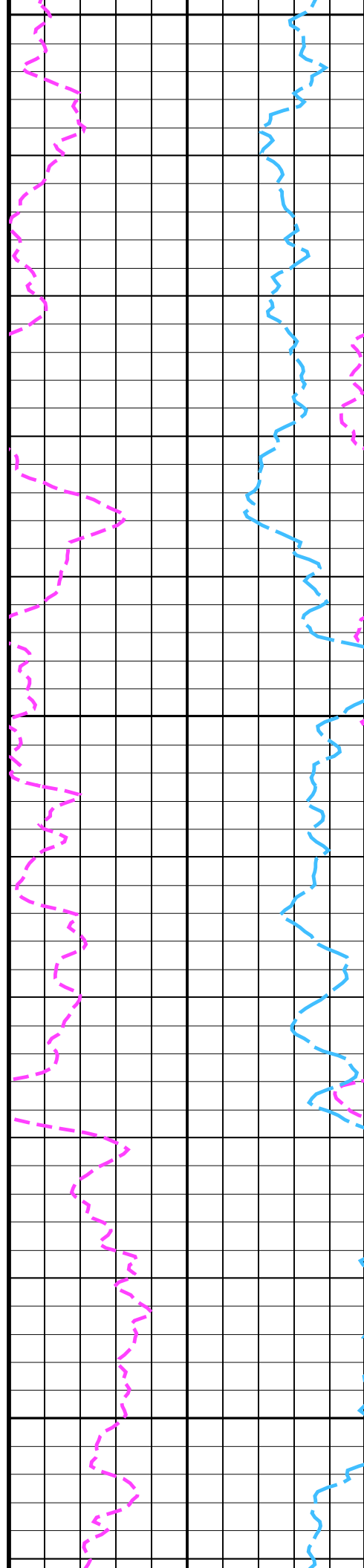


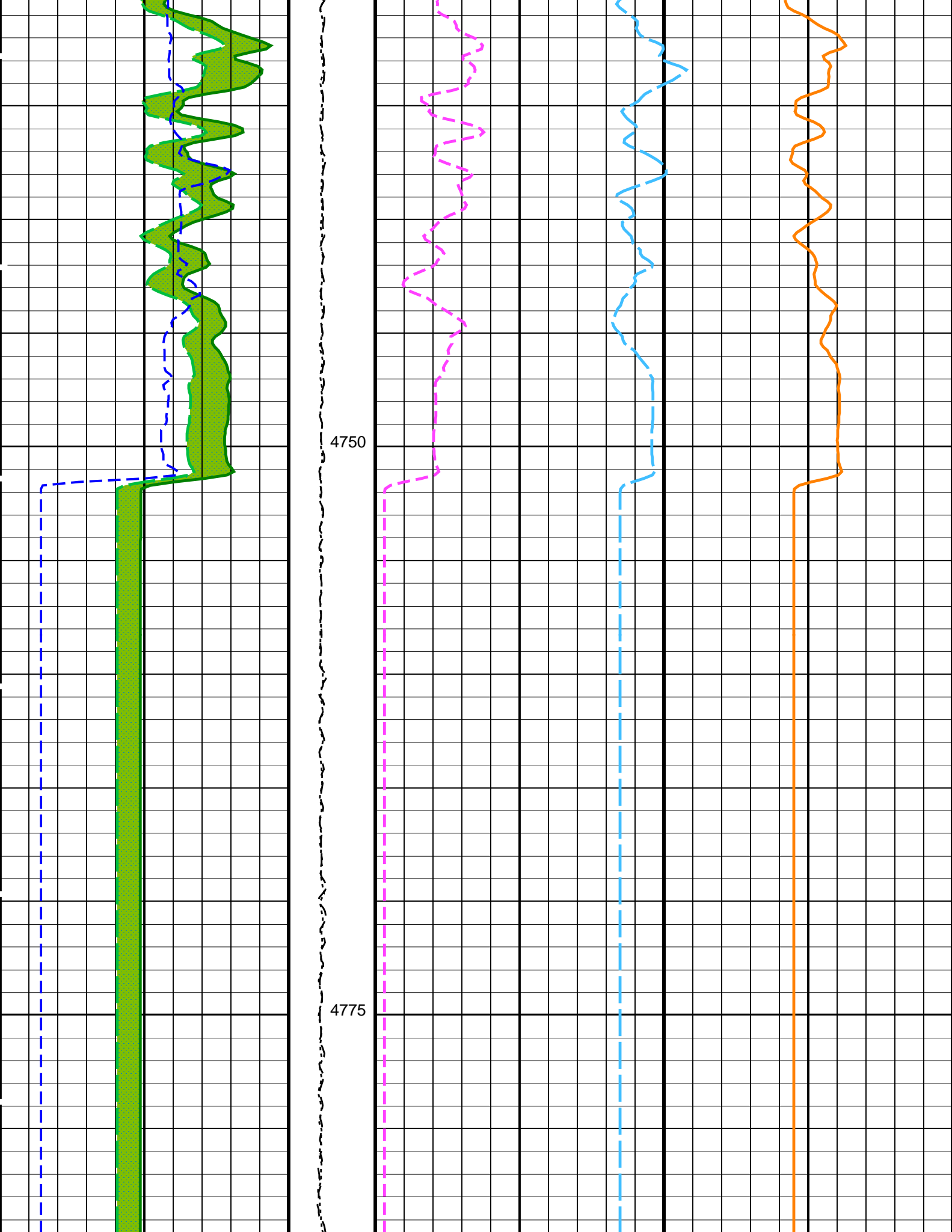
4625  
4650





4675  
4700  
4725





4750

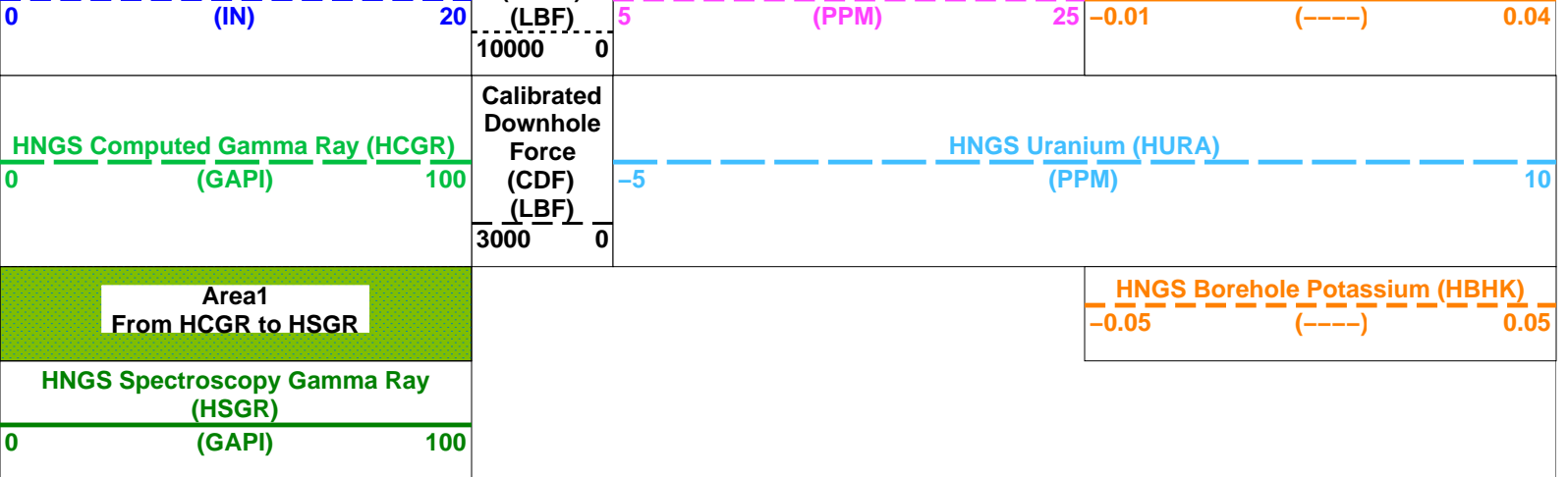
4775

HLDS Caliper (LCAL)

Tension (TENS)

HNGS Thorium (HTHO)

HNGS Potassium (HFK)



PIP SUMMARY

Time Mark Every 60 S

Parameters

DLIS Name	Description	Value
BHS	DSST-B: Dipole Shear Imager - B	
GCSE	Borehole Status	OPEN
	Generalized Caliper Selection	LCAL
BHS	HRLT-B: High Resolution Laterolog Array - B	
GCSE	Borehole Status	OPEN
	Generalized Caliper Selection	LCAL
	HNGS-BA: Hostile Natural Gamma Ray Sonde	
BAR1	HNGS Detector 1 Barite Constant	1
BAR2	HNGS Detector 2 Barite Constant	1
BHK	HNGS Borehole Potassium Correction Concentration	0
BHS	Borehole Status	OPEN
CSD1	Inner Casing Outer Diameter	0 IN
CSD2	Outer Casing Outer Diameter	0 IN
CSW1	Inner Casing Weight	0 LB/F
CSW2	Outer Casing Weight	0 LB/F
DBCC	HNGS Barite Constant Correction Flag	NONE
GCSE	Generalized Caliper Selection	LCAL
H1P	HNGS Detector 1 Allow/Disallow In Processing	ALLOW
H2P	HNGS Detector 2 Allow/Disallow In Processing	ALLOW
HABK	HNGS Borehole Potassium Running Average	-0.00482439
HALF	HNGS Alpha Filter Length	60 IN
HCRB	HNGS Apply Borehole Potassium Correction	NONE
HMWM	Mud Weighting Material	BARI
HNPE	HNGS Processing Enable	YES
S1BI	HNGS Detector 1 Calibration Bismuth Count Rate	1.3 CPS
S2BI	HNGS Detector 2 Calibration Bismuth Count Rate	1.3 CPS
SGRC	HNGS Standard Gamma-Ray Correction Flag	YES
TPOS	Tool Position	ECCE
VBA1	HNGS Detector 1 Variable Barite Factor Running Average	0.950841
VBA2	HNGS Detector 2 Variable Barite Factor Running Average	0.965444
BHS	EDTC-B: Enhanced DTS Cartridge	
GCSE	Borehole Status	OPEN
	Generalized Caliper Selection	LCAL
	System and Miscellaneous	
BS	Bit Size	9.875 IN
DO	Depth Offset for Playback	0.0 M
PP	Playback Processing	RECOMPUTE

Format: HNGSYields Vertical Scale: 1:200 Graphics File Created: 07-Mar-2017 13:04

OP System Version: 19C0-187

DSST-B	19C0-187	HRLT-B	19C0-187
HLDS	19C0-187	LDSC-B	19C0-187
HNGC-B	19C0-187	HNGS-BA	19C0-187
EDTC-B	SKK-5169-EDTCB		

Input DLIS Files

DEFAULT	DSI_HRLA_LDL_NGS_015LUP	FN:22	PRODUCER	07-Mar-2017 09:26	4784.6 M	3755.6 M
---------	-------------------------	-------	----------	-------------------	----------	----------

Output DLIS Files

DEFAULT	DSI_HRLA_LDL_NGS_017PUP	FN:26	PRODUCER	07-Mar-2017 13:04
BACKUP	DSI_HRLA_LDL_NGS_017PUP	FN:27	PRODUCER	07-Mar-2017 13:04