

Input DLIS Files

DEFAULT DSI_HRLA_LDL_NGS_017PUP FN:26 PRODUCER 07-Mar-2017 13:04 4784.6 M 3755.7 M

Output DLIS Files

DEFAULT DSI_HRLA_LDL_NGS_042PUP FN:60 PRODUCER 10-Mar-2017 16:10 4784.6 M 3755.7 M

OP System Version: 19C0-187

DSST-B	19C0-187	HRLT-B	19C0-187
HLDS	19C0-187	LDSC-B	19C0-187
HNGC-B	19C0-187	HNGS-BA	19C0-187
EDTC-B	SKK-5169-EDTCB		

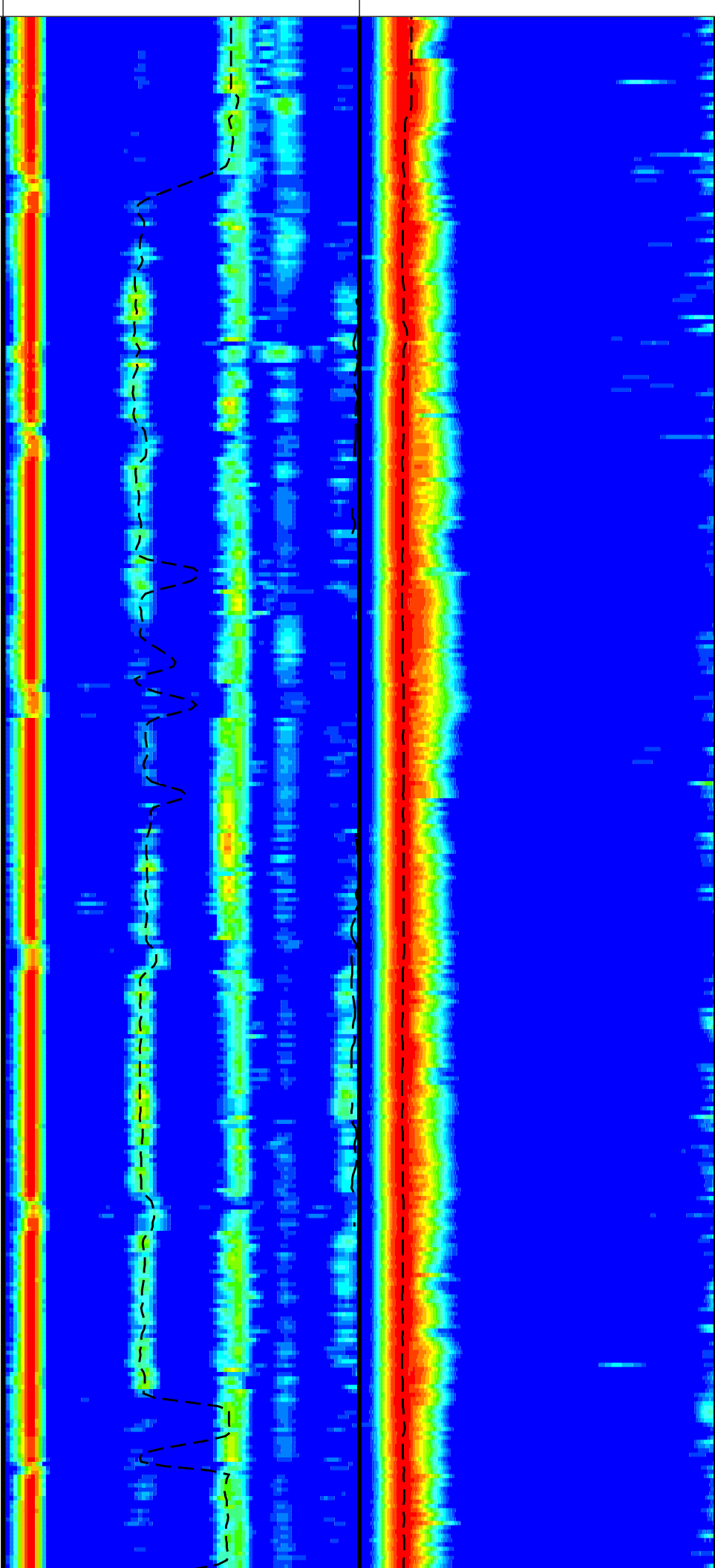
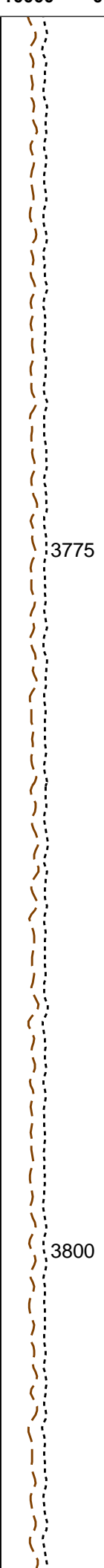
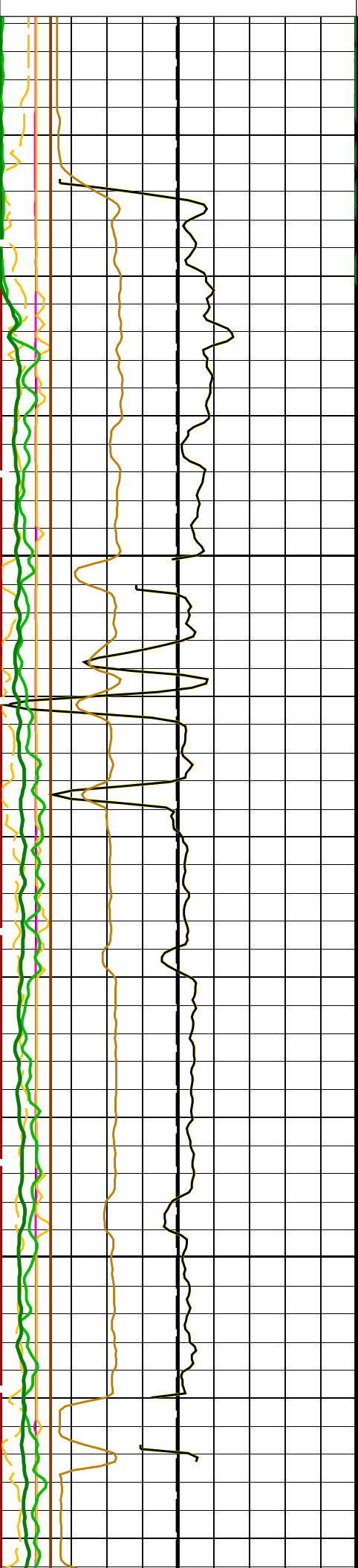
Changed Parameter Summary

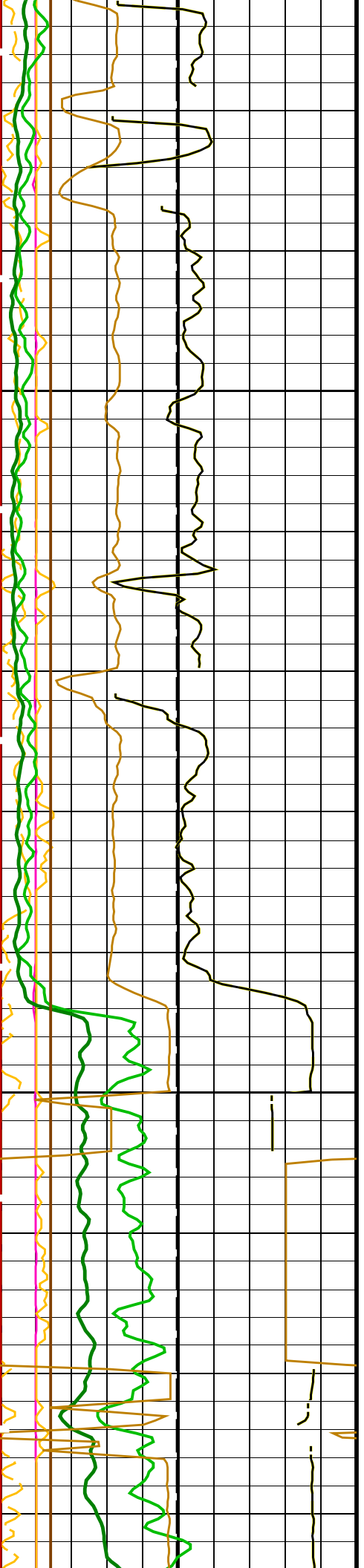
DLIS Name	New Value	Previous Value	Depth & Time
COLL	90 US/F	65 US/F	4427.7 16:11:22

PIP SUMMARY

Time Mark Every 60 S

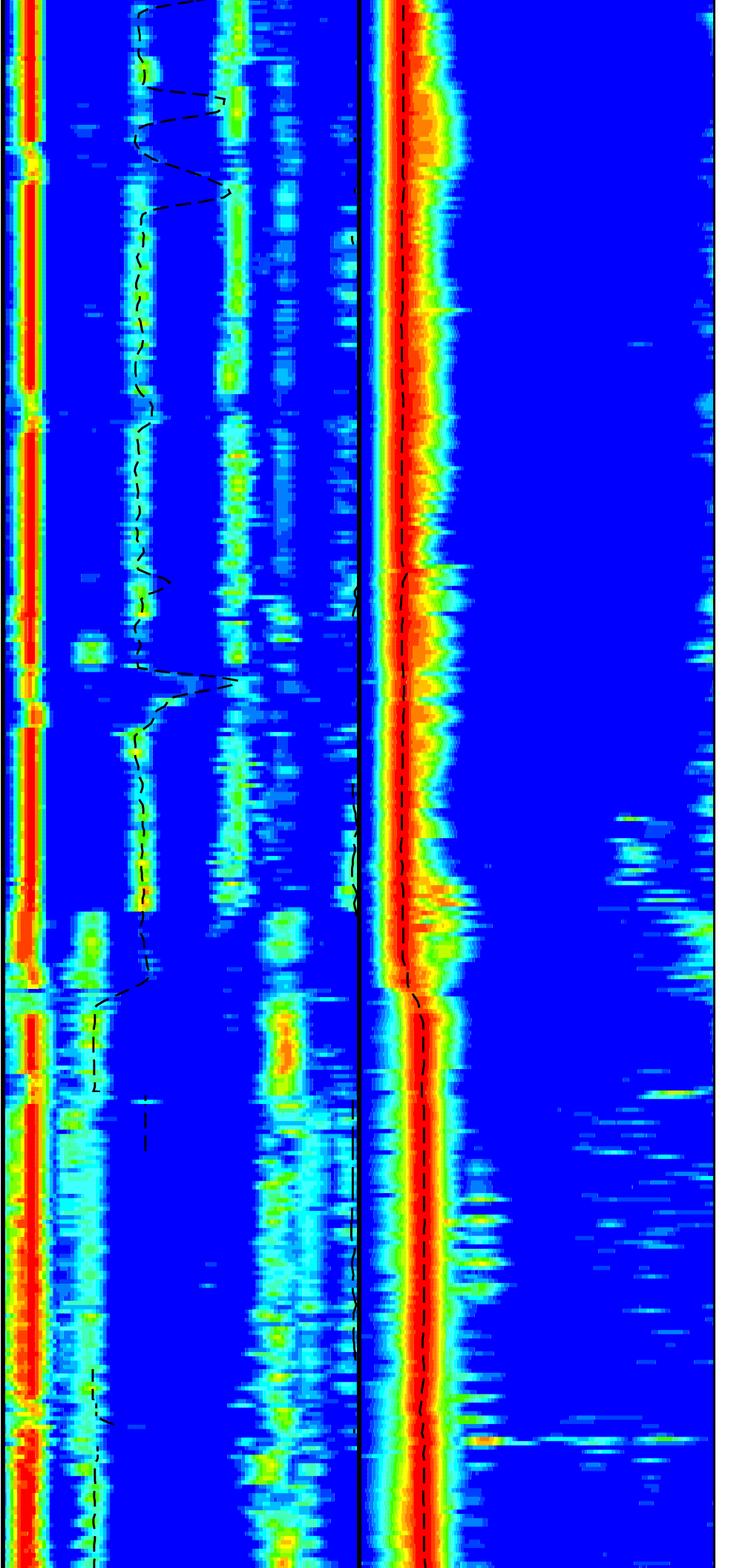
HNGS Spectroscopy Gamma Ray (HSGR)									
0	(GAPI)	100							
Waveform Data Copy Indicator 4 - Monopole P&S (WCI4)									
0	(-----)	10							
Peak Coherence / RA - P & S Shear (CHRS)									
-1	(-----)	9							
Peak Coherence / RA - P & S Comp (CHRP)									
0	(-----)	10							
Peak Coherence / RA - Upper Dipole (CHR2)									
0	(-----)	10							
HLDS Caliper (LCAL)									
0	(IN)	20							
Gamma Ray (GR_EDTC)									
0	(GAPI)	100							
Poisson's Ratio (PR)									
0	(-----)	0.5							
Sonic Velocity (SVEL)									
1000	(M/S)	6000							
<table border="1"> <thead> <tr> <th>Min</th> <th>Amplitude</th> <th>Max</th> </tr> </thead> <tbody> <tr> <td>40</td> <td>Rec.Array P&S Slow Proj. CVDL (SPR4) (US/F)</td> <td>240</td> </tr> </tbody> </table>				Min	Amplitude	Max	40	Rec.Array P&S Slow Proj. CVDL (SPR4) (US/F)	240
Min	Amplitude	Max							
40	Rec.Array P&S Slow Proj. CVDL (SPR4) (US/F)	240							
<table border="1"> <thead> <tr> <th>Min</th> <th>Amplitude</th> <th>Max</th> </tr> </thead> <tbody> <tr> <td>40</td> <td>Delta-T Shear / RA - P & S (DTRS) (US/F)</td> <td>240</td> </tr> </tbody> </table>				Min	Amplitude	Max	40	Delta-T Shear / RA - P & S (DTRS) (US/F)	240
Min	Amplitude	Max							
40	Delta-T Shear / RA - P & S (DTRS) (US/F)	240							
0	(-----)	0.5							
<table border="1"> <thead> <tr> <th>Min</th> <th>Amplitude</th> <th>Max</th> </tr> </thead> <tbody> <tr> <td>75</td> <td>Rec.Array U.Dipole Slow Proj. CVDL (SPR2) (US/F)</td> <td>1200</td> </tr> </tbody> </table>				Min	Amplitude	Max	75	Rec.Array U.Dipole Slow Proj. CVDL (SPR2) (US/F)	1200
Min	Amplitude	Max							
75	Rec.Array U.Dipole Slow Proj. CVDL (SPR2) (US/F)	1200							
<table border="1"> <thead> <tr> <th>Min</th> <th>Amplitude</th> <th>Max</th> </tr> </thead> <tbody> <tr> <td>75</td> <td>Delta-T Shear / RA - Upper Dipole (DT2R) (US/F)</td> <td>1200</td> </tr> </tbody> </table>				Min	Amplitude	Max	75	Delta-T Shear / RA - Upper Dipole (DT2R) (US/F)	1200
Min	Amplitude	Max							
75	Delta-T Shear / RA - Upper Dipole (DT2R) (US/F)	1200							
<table border="1"> <thead> <tr> <th>Min</th> <th>Amplitude</th> <th>Max</th> </tr> </thead> <tbody> <tr> <td>40</td> <td>Delta-T Comp / RA - P & S (DTRP) (US/F)</td> <td>240</td> </tr> </tbody> </table>				Min	Amplitude	Max	40	Delta-T Comp / RA - P & S (DTRP) (US/F)	240
Min	Amplitude	Max							
40	Delta-T Comp / RA - P & S (DTRP) (US/F)	240							
0	(IN)	20							
<table border="1"> <thead> <tr> <th>Min</th> <th>Amplitude</th> <th>Max</th> </tr> </thead> <tbody> <tr> <td>75</td> <td>Delta-T Shear / RA - Upper Dipole (DT2R) (US/F)</td> <td>1200</td> </tr> </tbody> </table>				Min	Amplitude	Max	75	Delta-T Shear / RA - Upper Dipole (DT2R) (US/F)	1200
Min	Amplitude	Max							
75	Delta-T Shear / RA - Upper Dipole (DT2R) (US/F)	1200							
<table border="1"> <thead> <tr> <th>Min</th> <th>Amplitude</th> <th>Max</th> </tr> </thead> <tbody> <tr> <td>40</td> <td>Delta-T Comp / RA - P & S (DTRP) (US/F)</td> <td>240</td> </tr> </tbody> </table>				Min	Amplitude	Max	40	Delta-T Comp / RA - P & S (DTRP) (US/F)	240
Min	Amplitude	Max							
40	Delta-T Comp / RA - P & S (DTRP) (US/F)	240							
0	(IN)	20							
<table border="1"> <thead> <tr> <th>Min</th> <th>Amplitude</th> <th>Max</th> </tr> </thead> <tbody> <tr> <td>75</td> <td>Delta-T Shear / RA - Upper Dipole (DT2R) (US/F)</td> <td>1200</td> </tr> </tbody> </table>				Min	Amplitude	Max	75	Delta-T Shear / RA - Upper Dipole (DT2R) (US/F)	1200
Min	Amplitude	Max							
75	Delta-T Shear / RA - Upper Dipole (DT2R) (US/F)	1200							
<table border="1"> <thead> <tr> <th>Min</th> <th>Amplitude</th> <th>Max</th> </tr> </thead> <tbody> <tr> <td>40</td> <td>Delta-T Comp / RA - P & S (DTRP) (US/F)</td> <td>240</td> </tr> </tbody> </table>				Min	Amplitude	Max	40	Delta-T Comp / RA - P & S (DTRP) (US/F)	240
Min	Amplitude	Max							
40	Delta-T Comp / RA - P & S (DTRP) (US/F)	240							
0	(IN)	20							

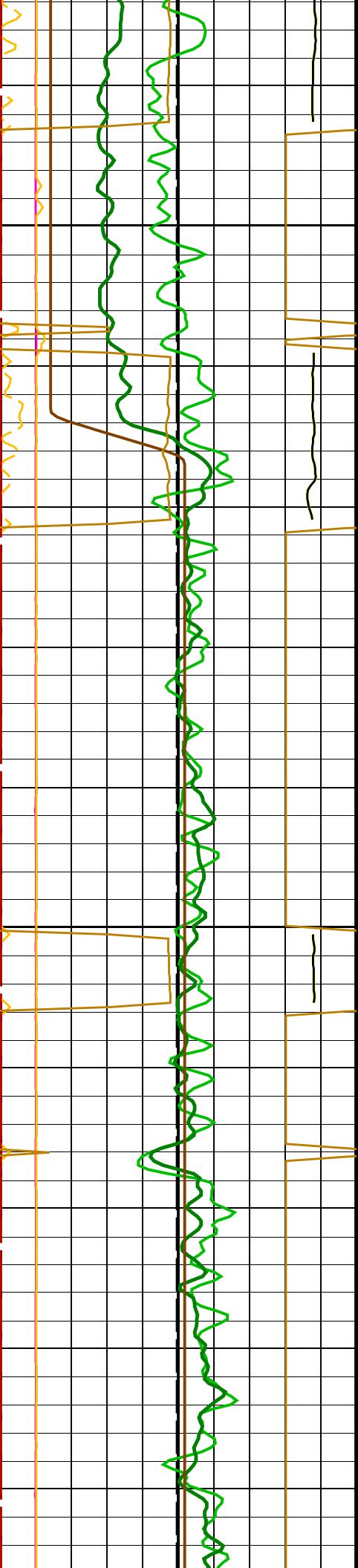




3825

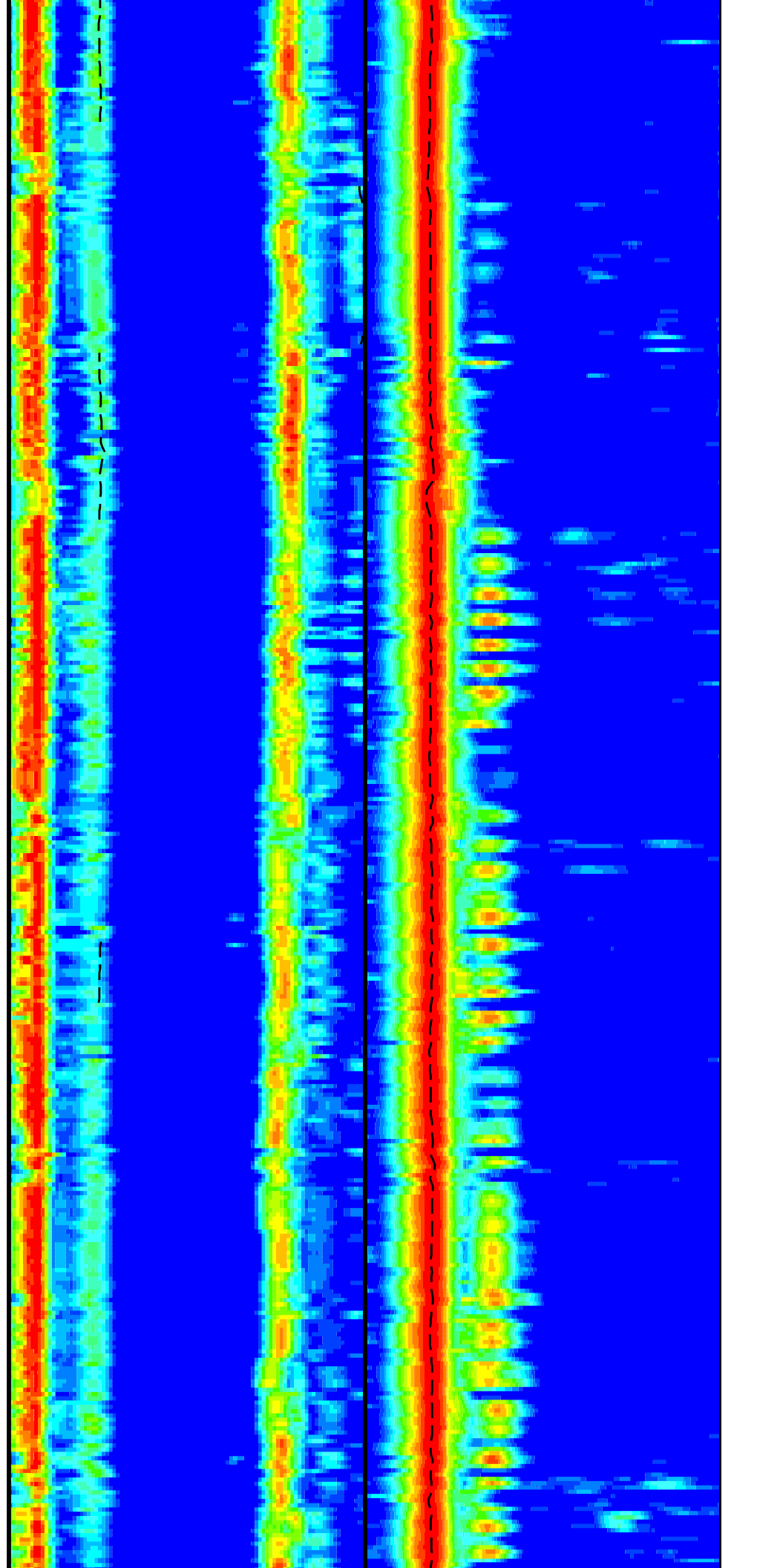
3850

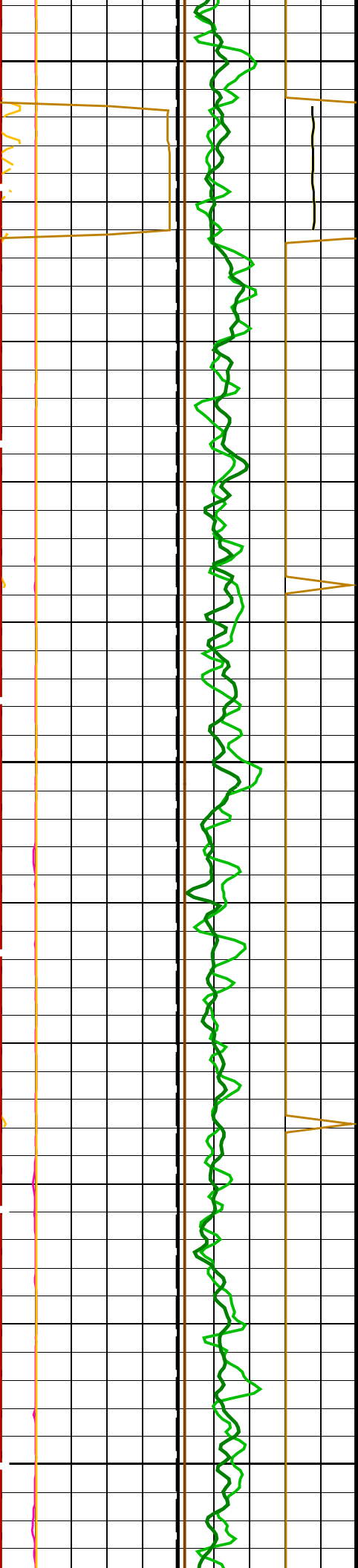




3875

3900

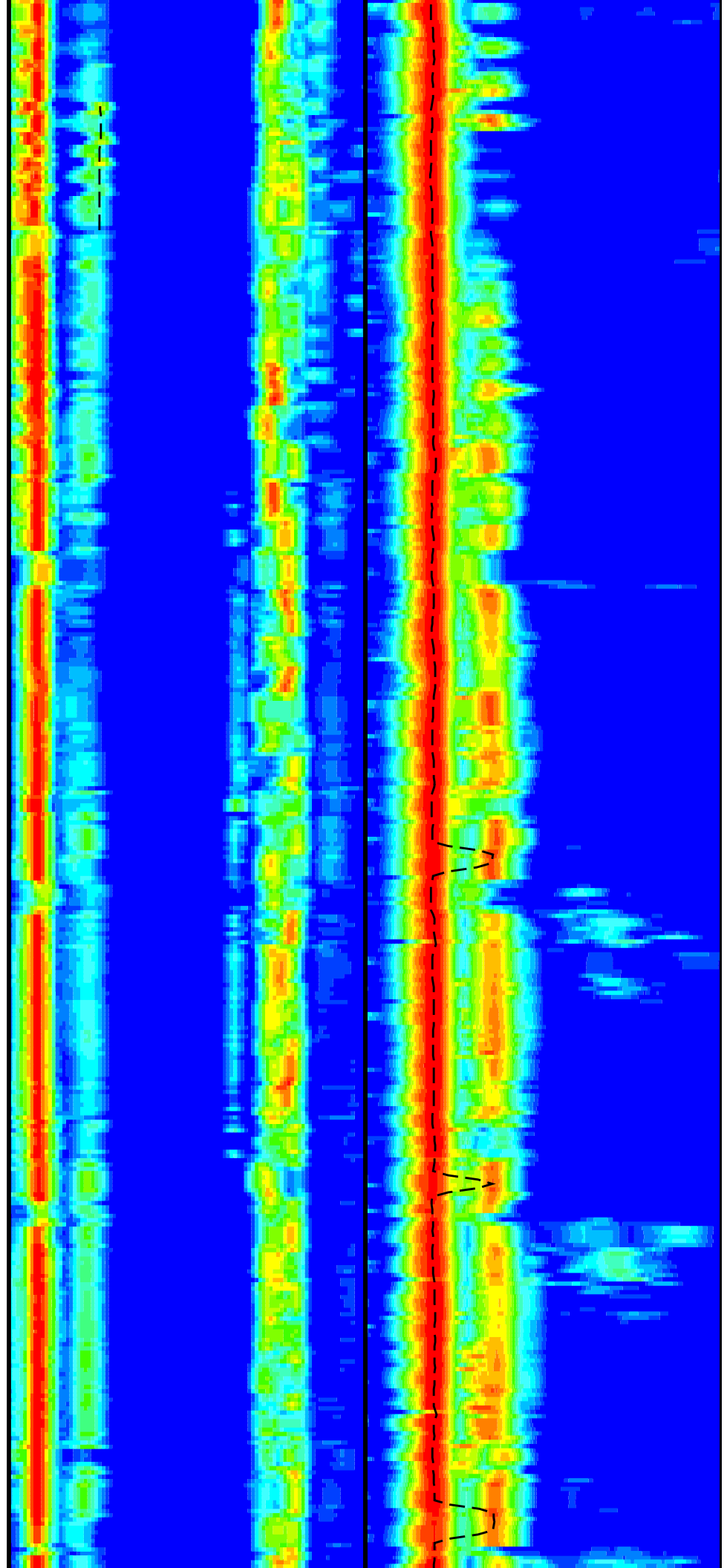


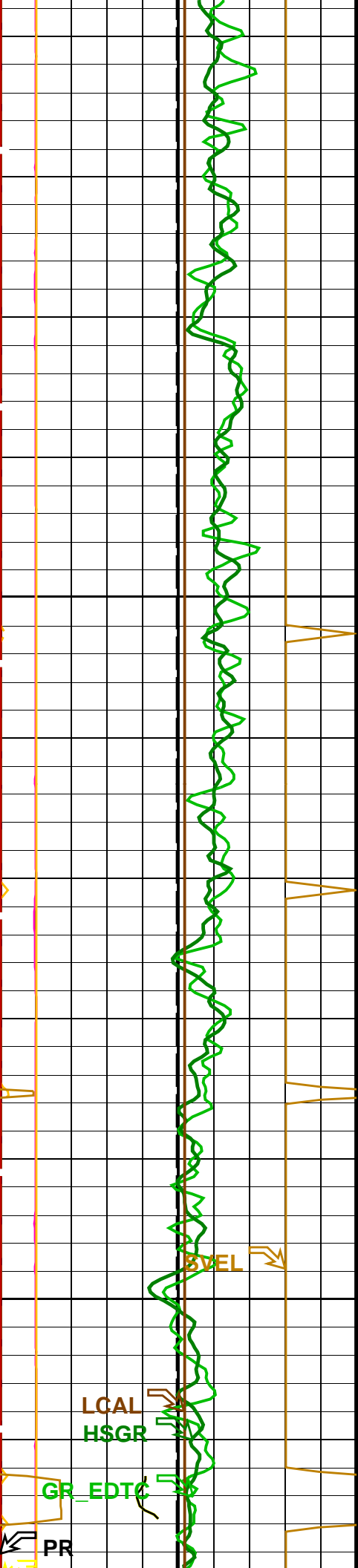


3925

3950

3975

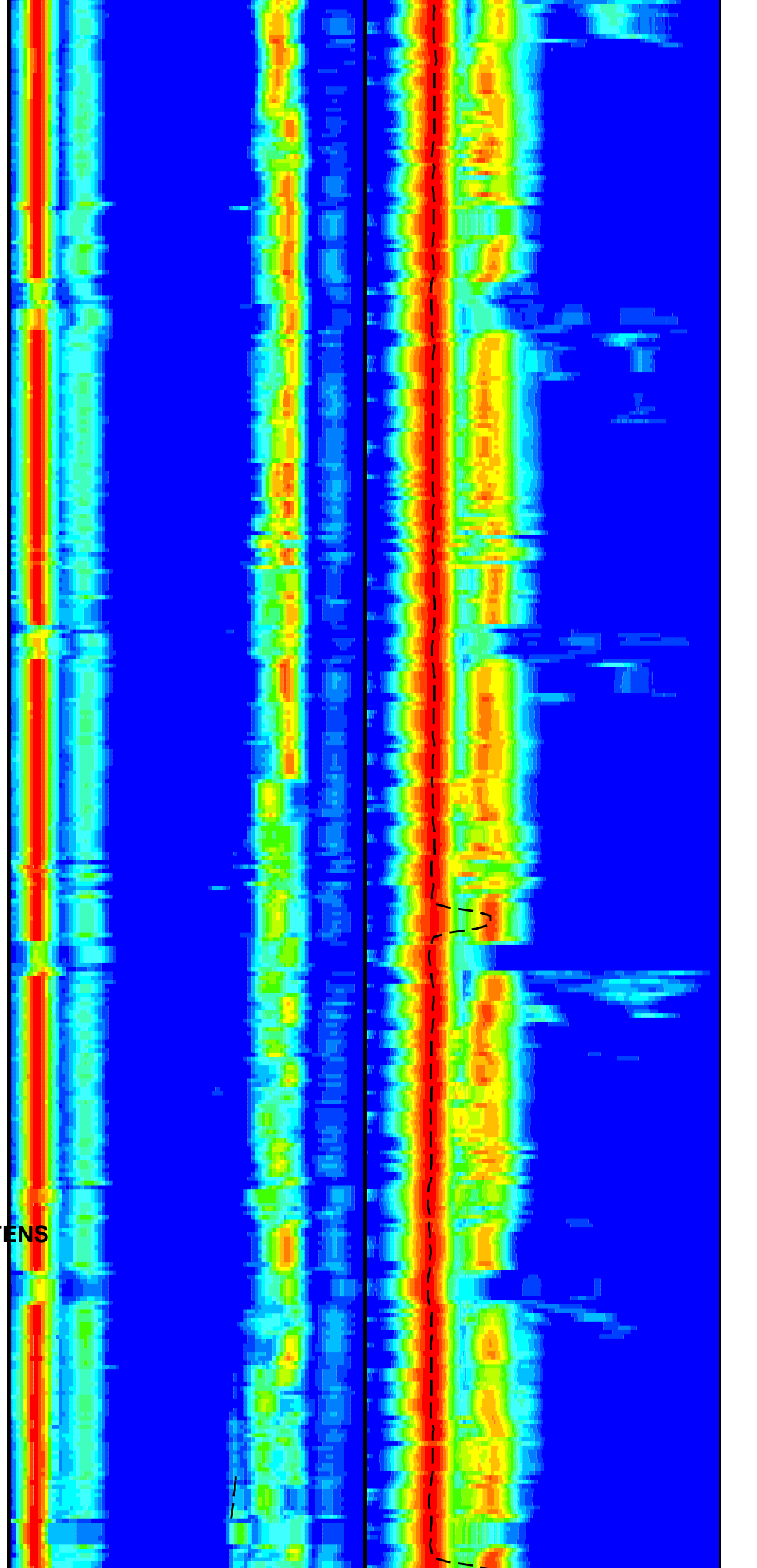


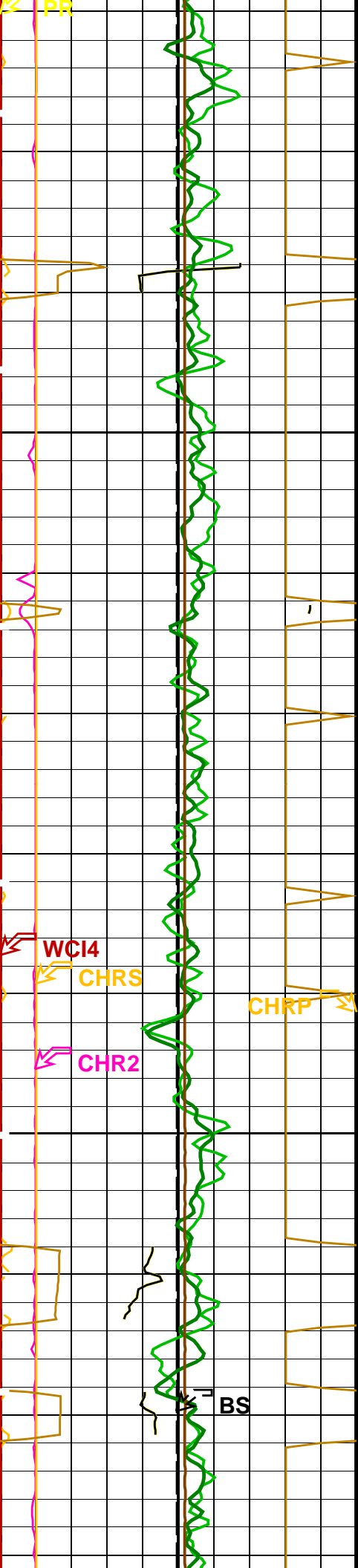


4000

TENS

4025

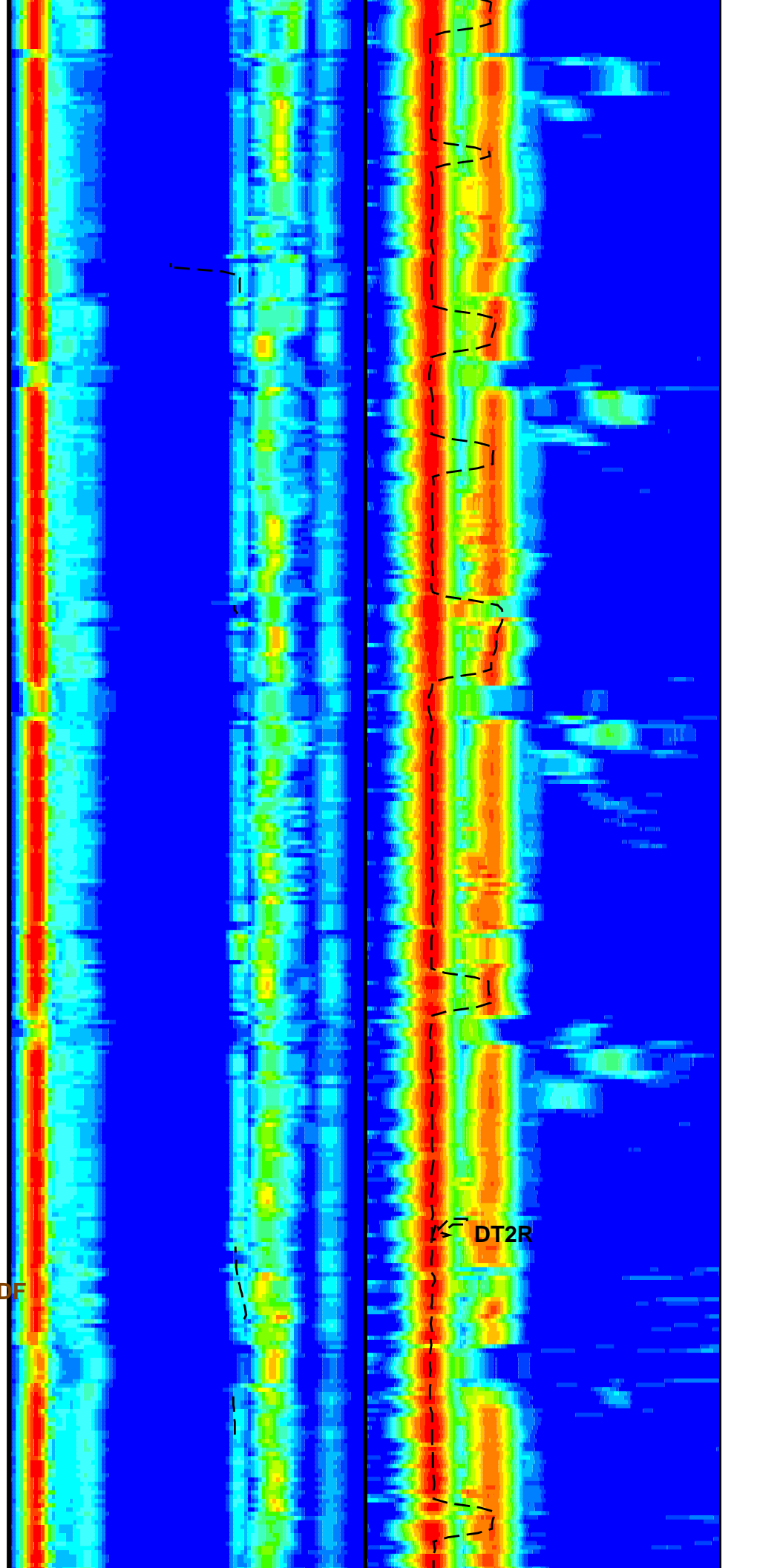


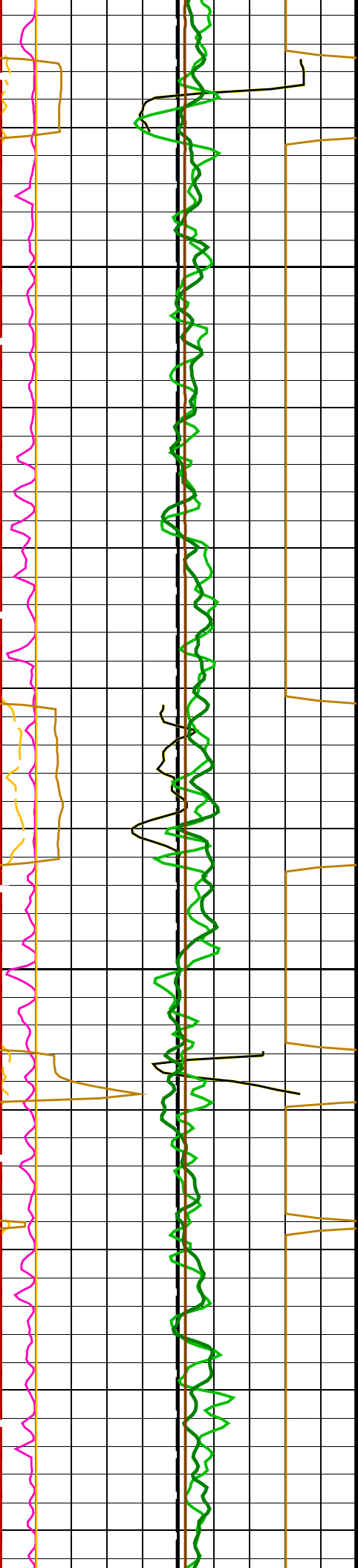


4050

4075

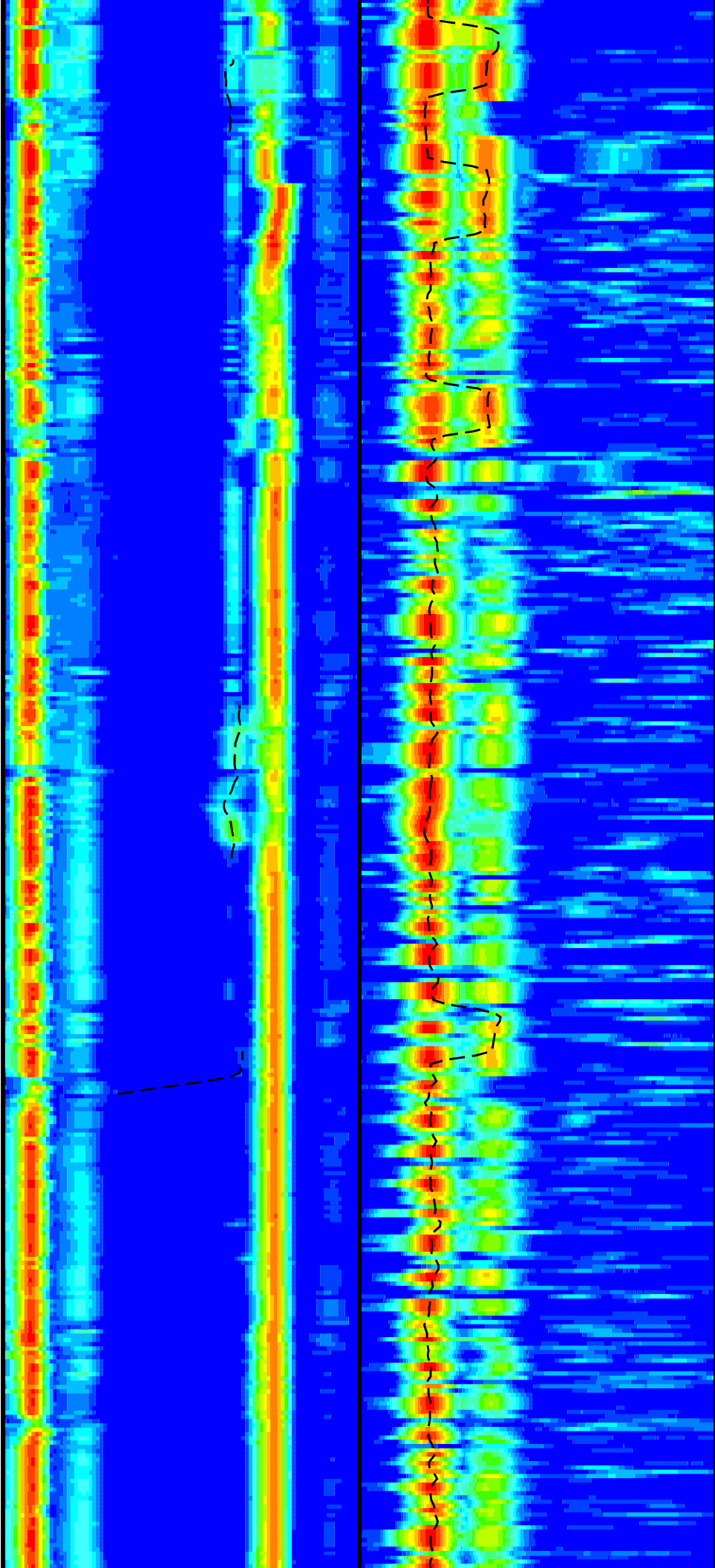
CDF

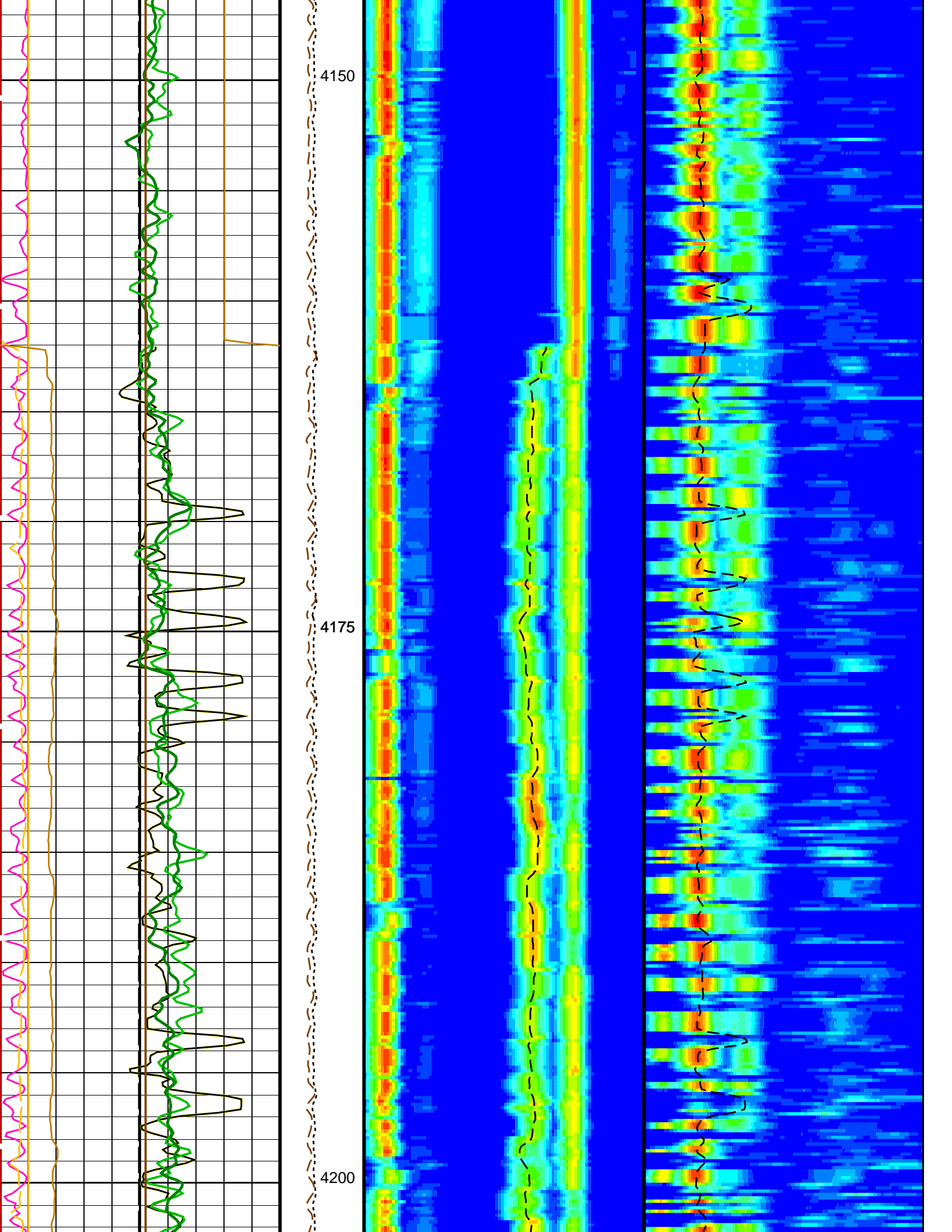


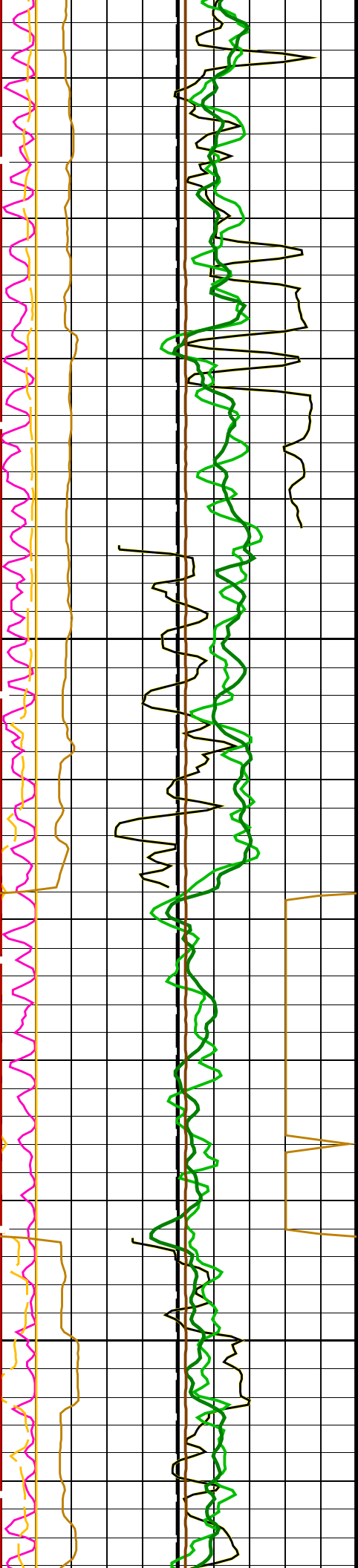


4100

4125

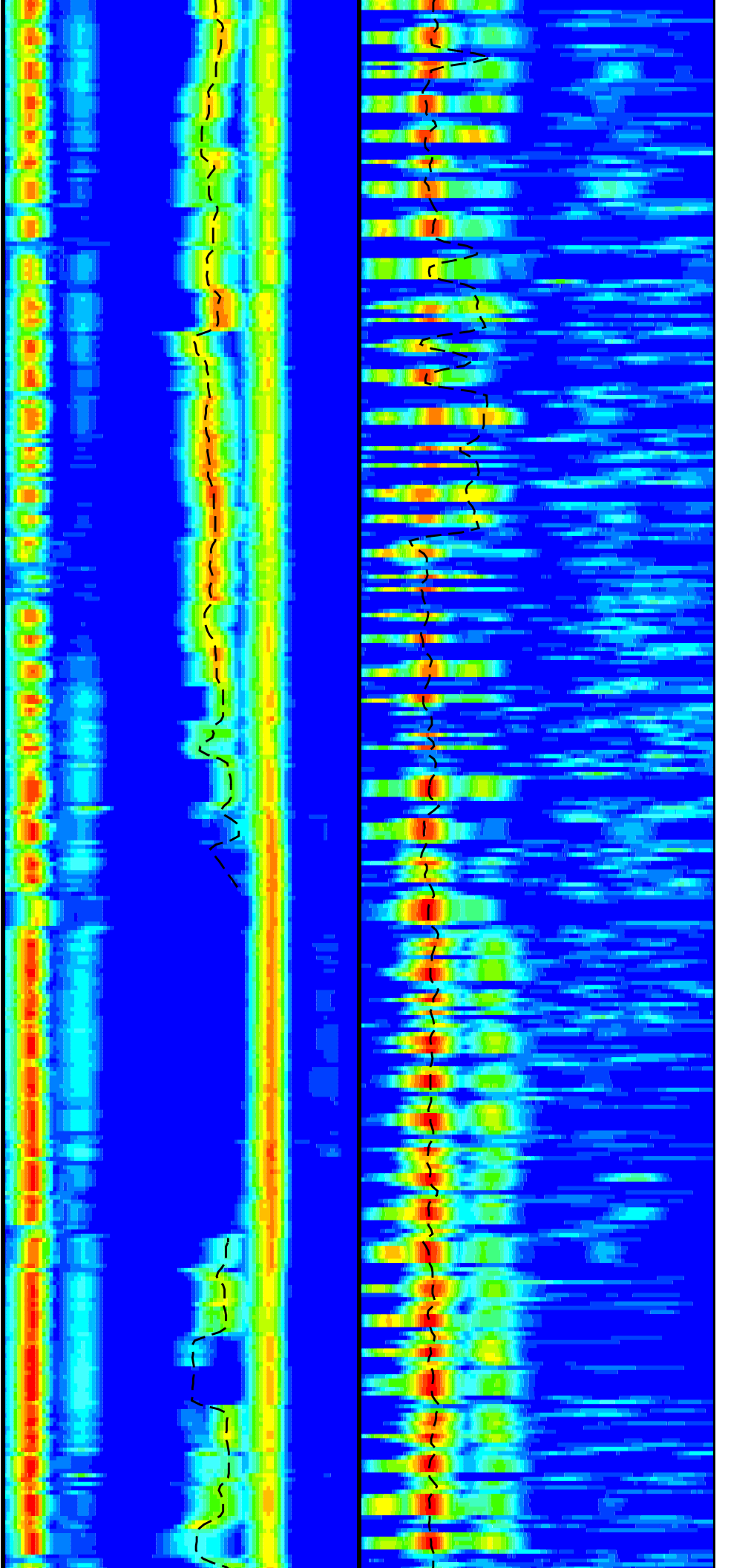


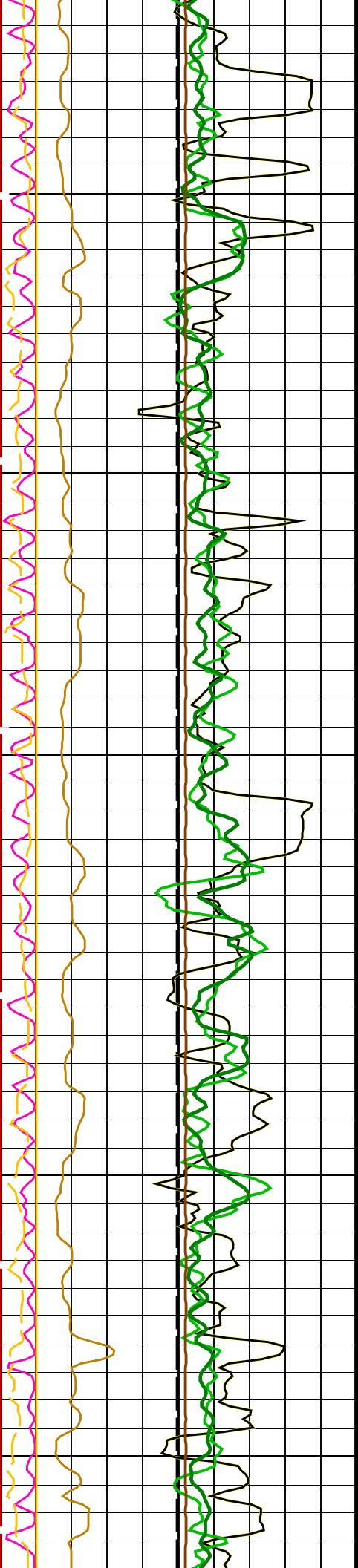




4225

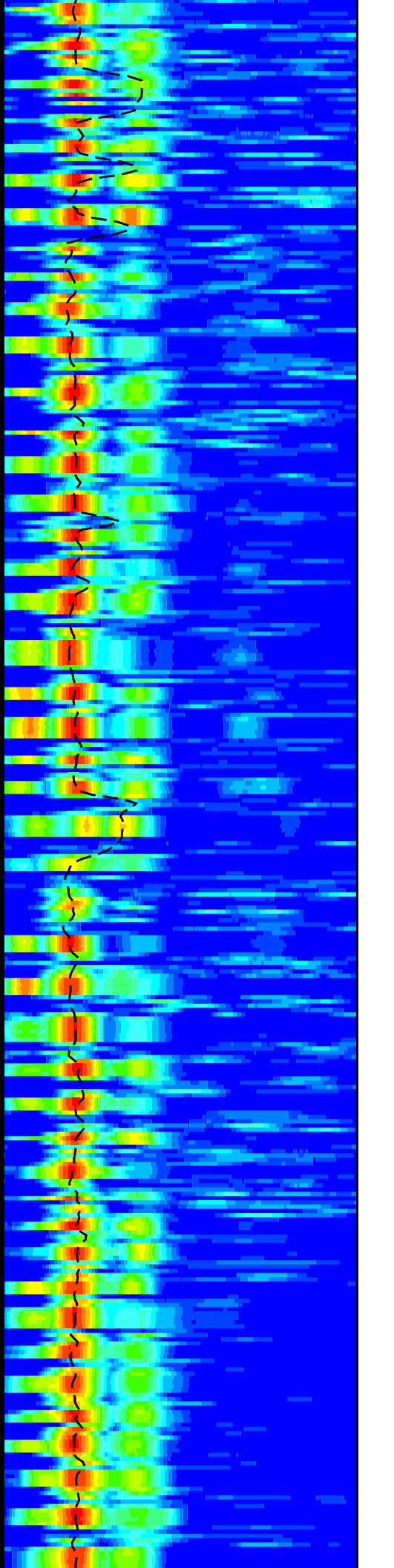
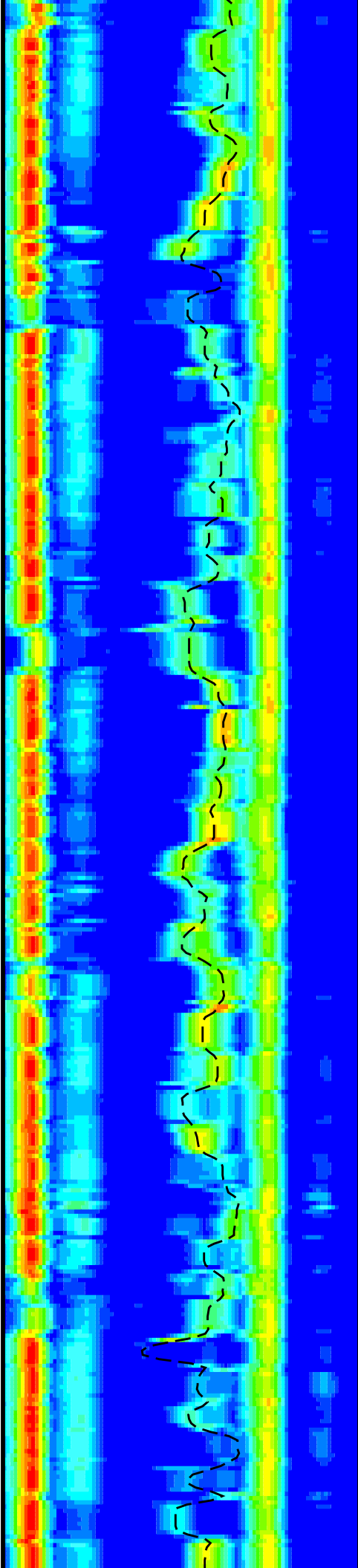
4250

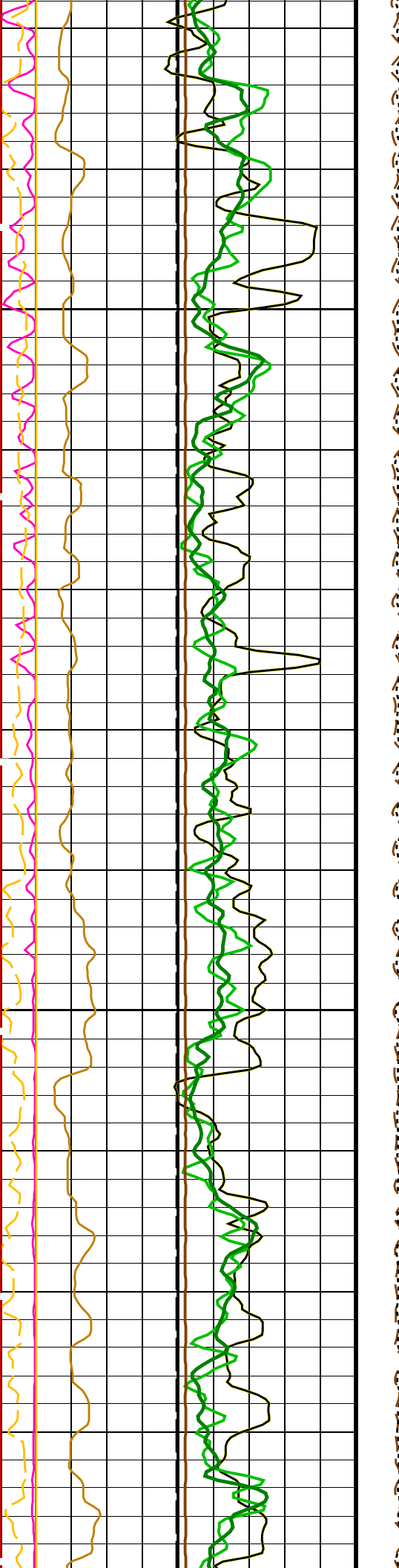




4275

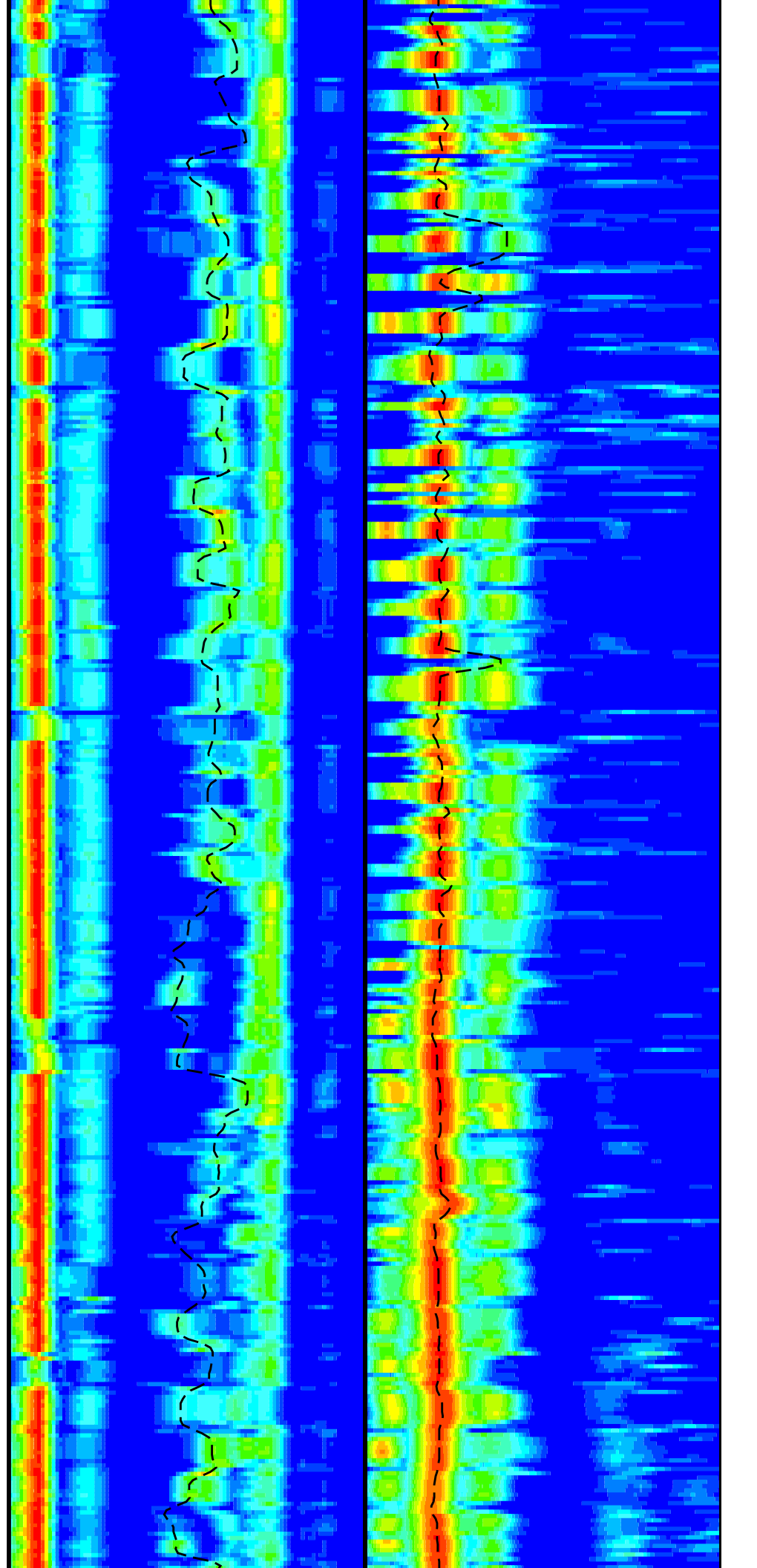
4300

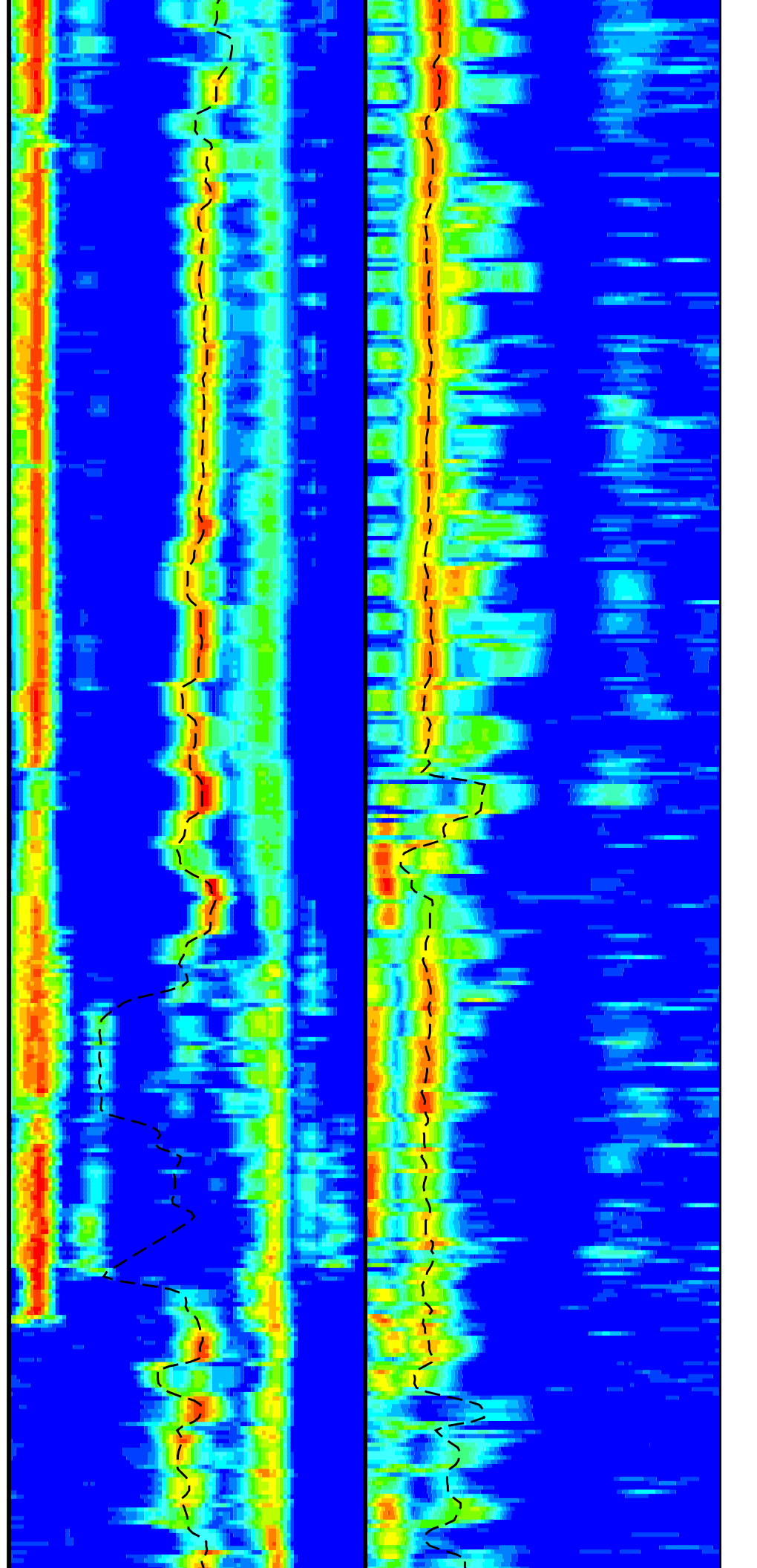
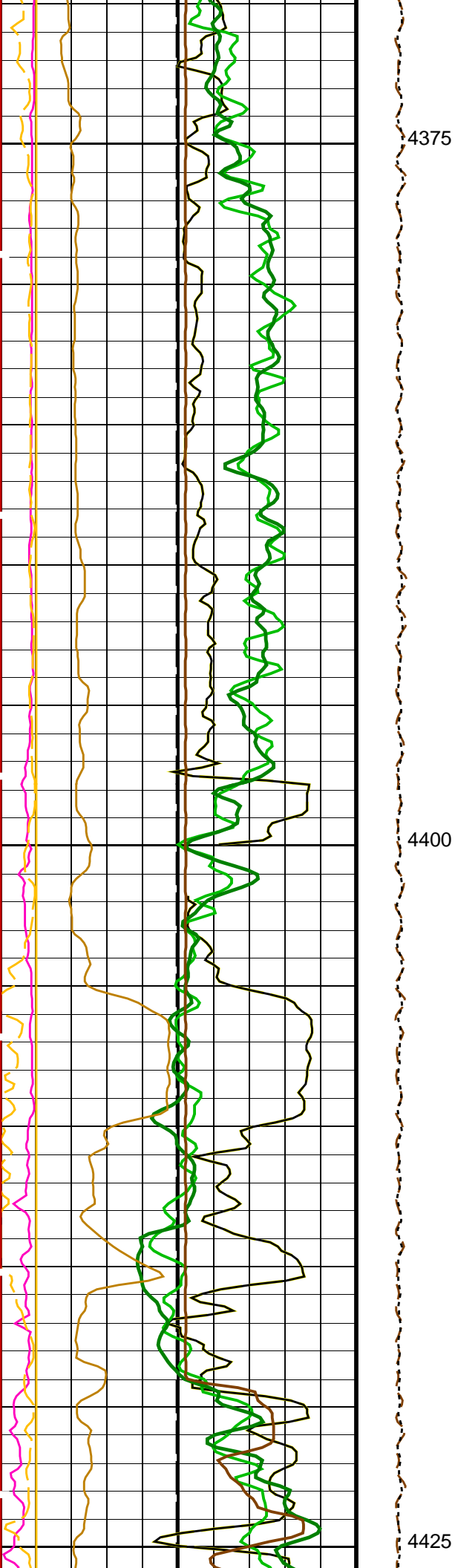


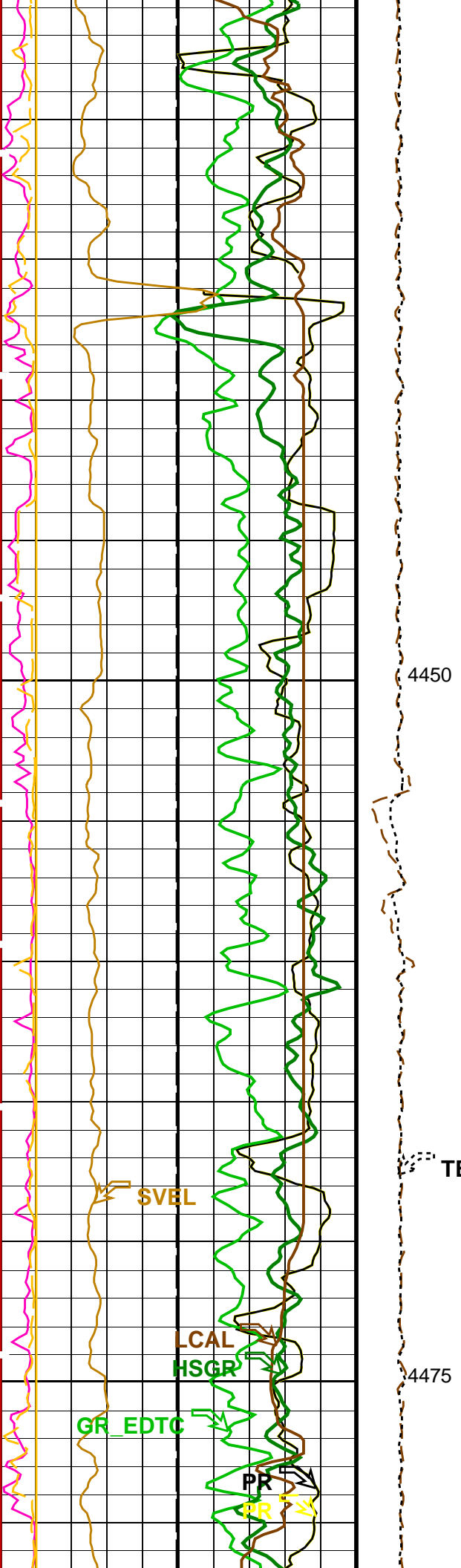


4325

4350



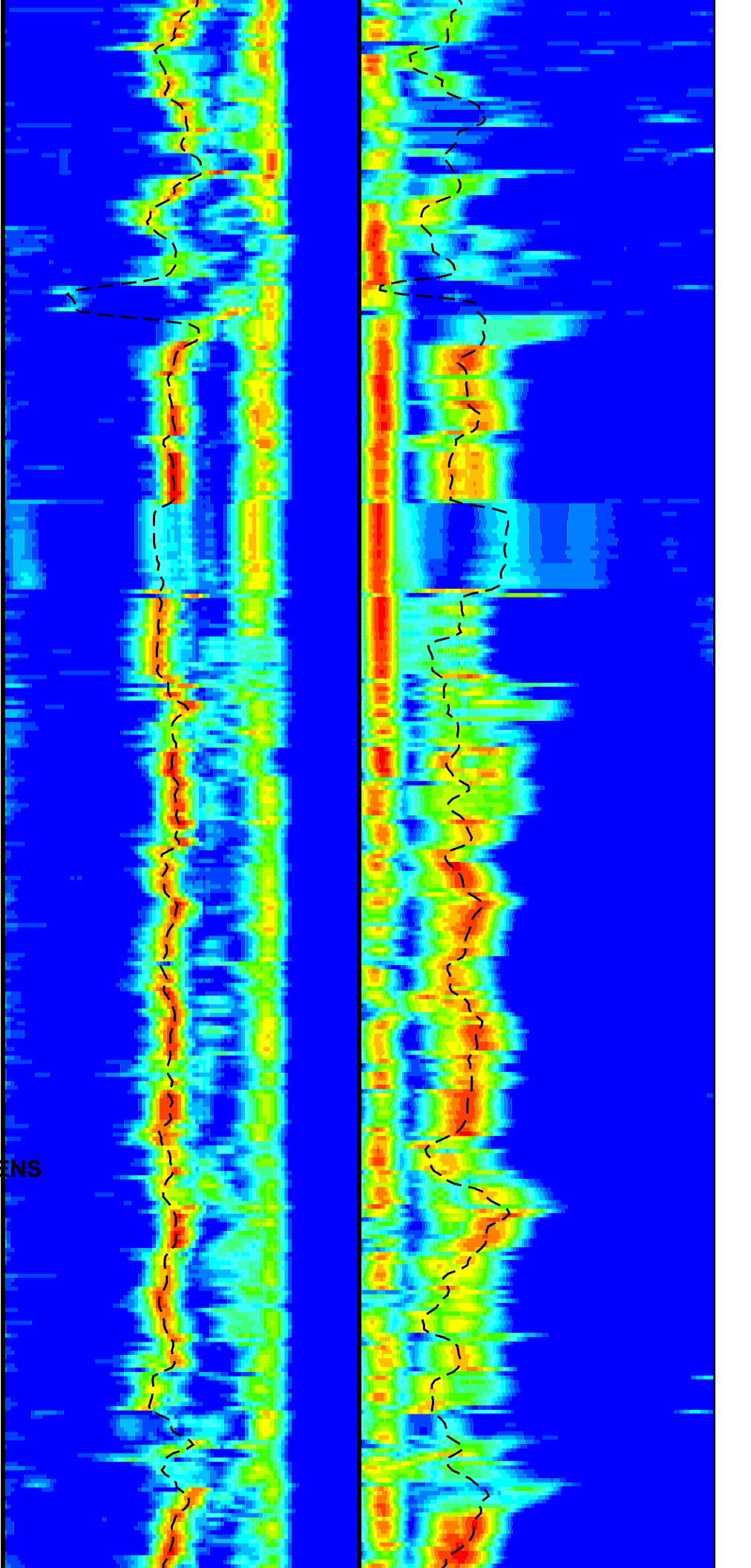


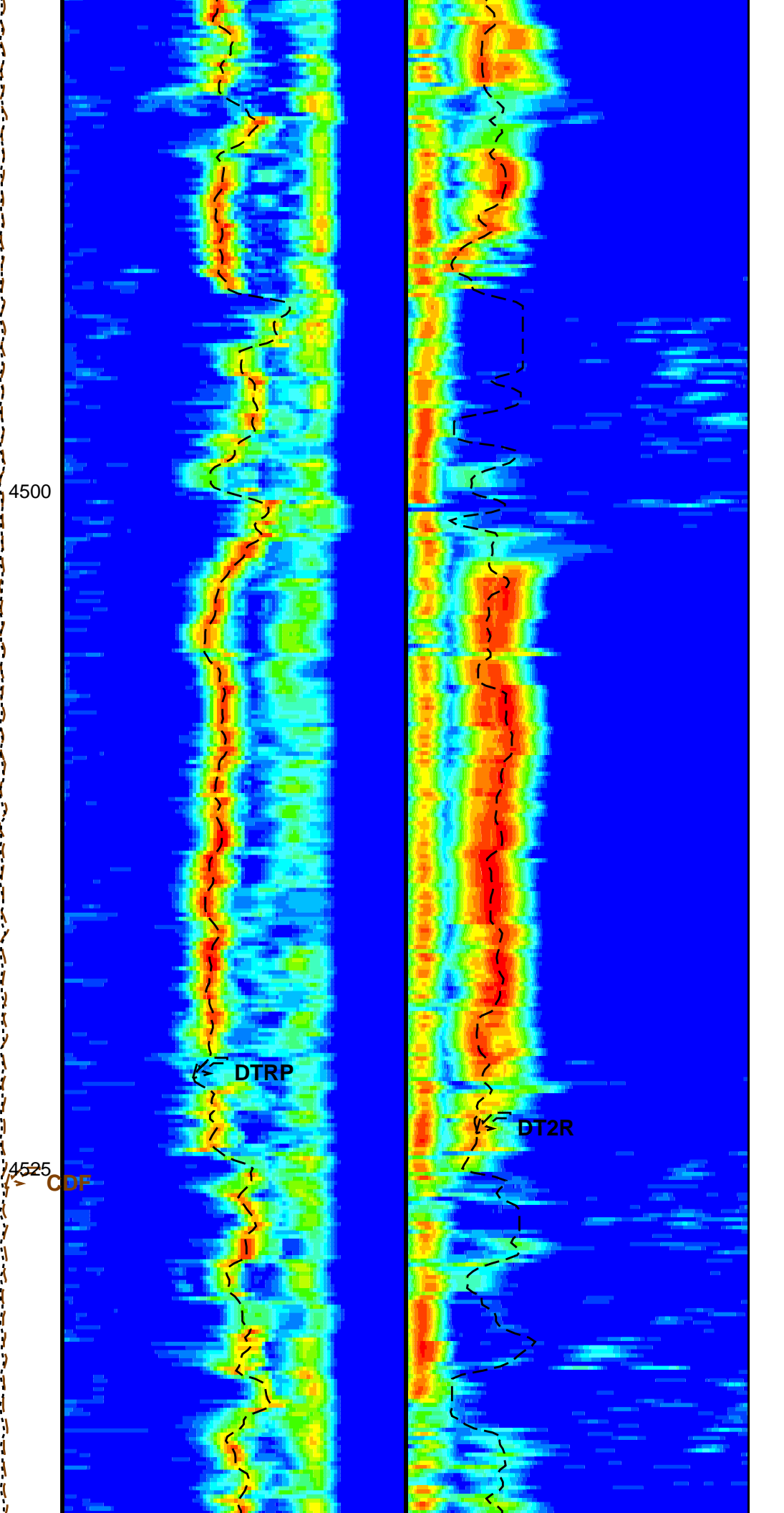
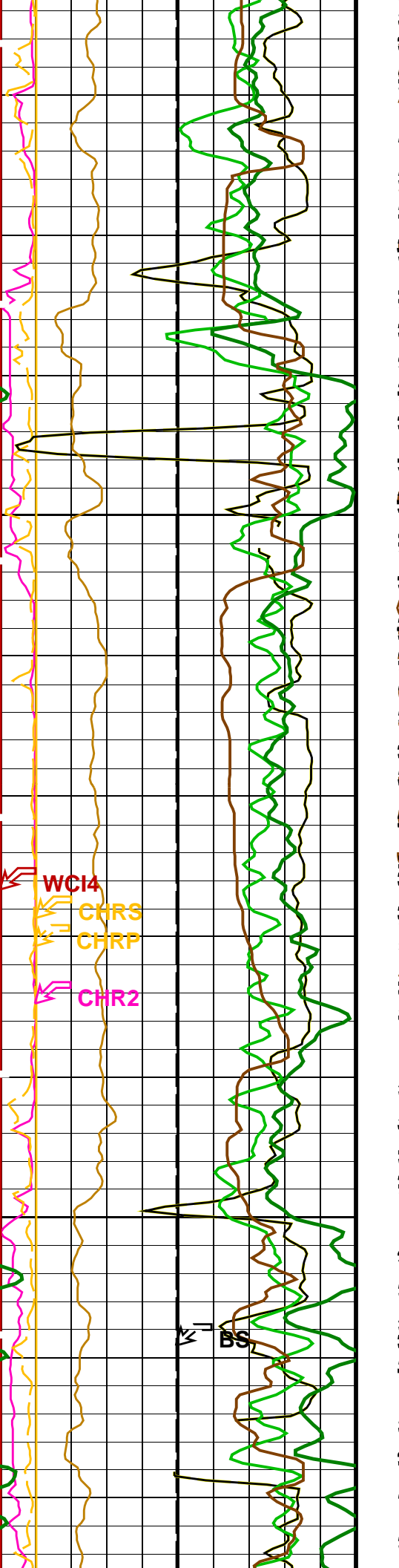


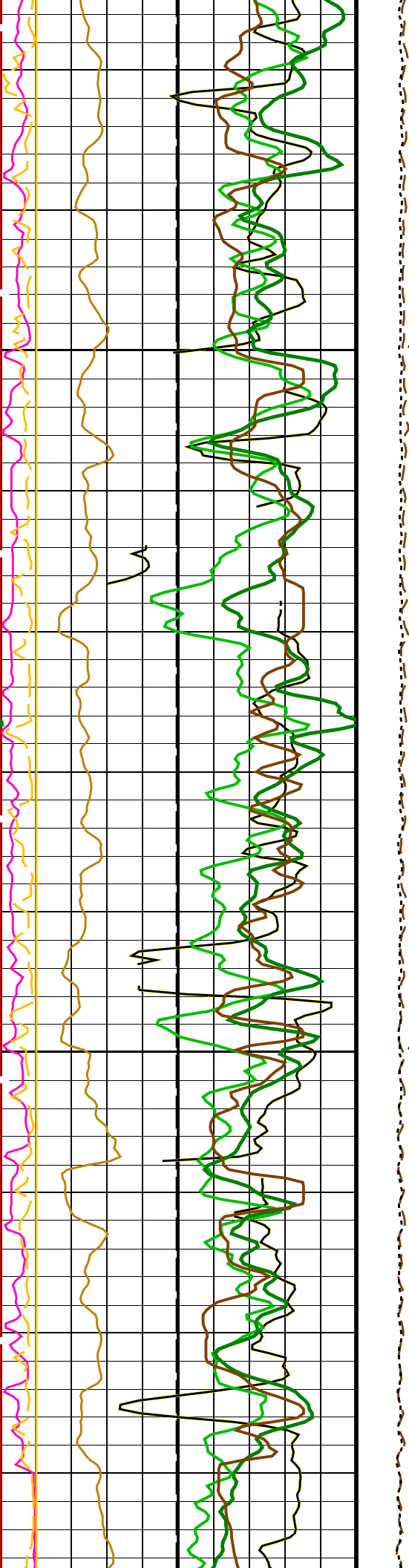
4450

TENS

4475

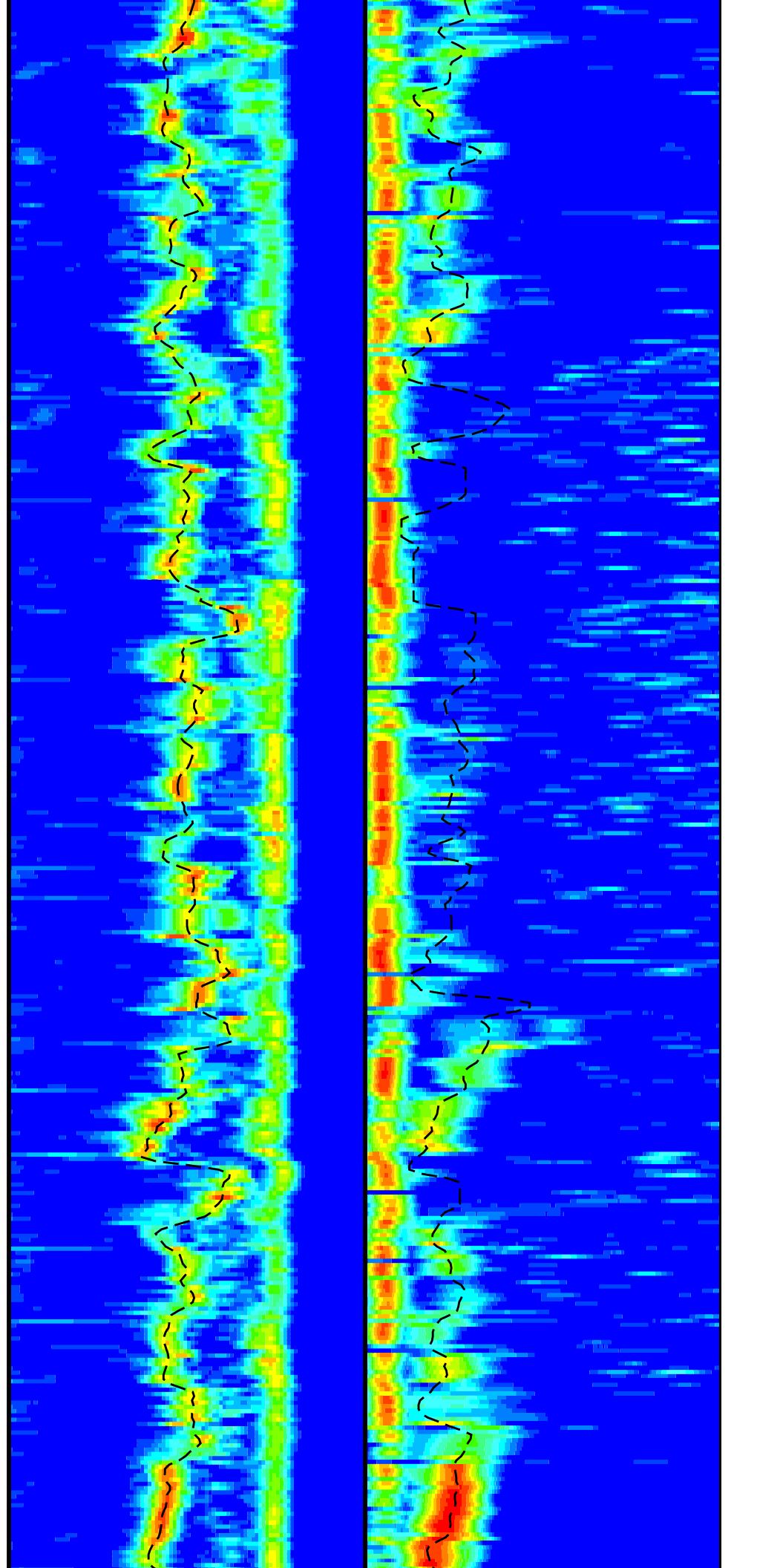


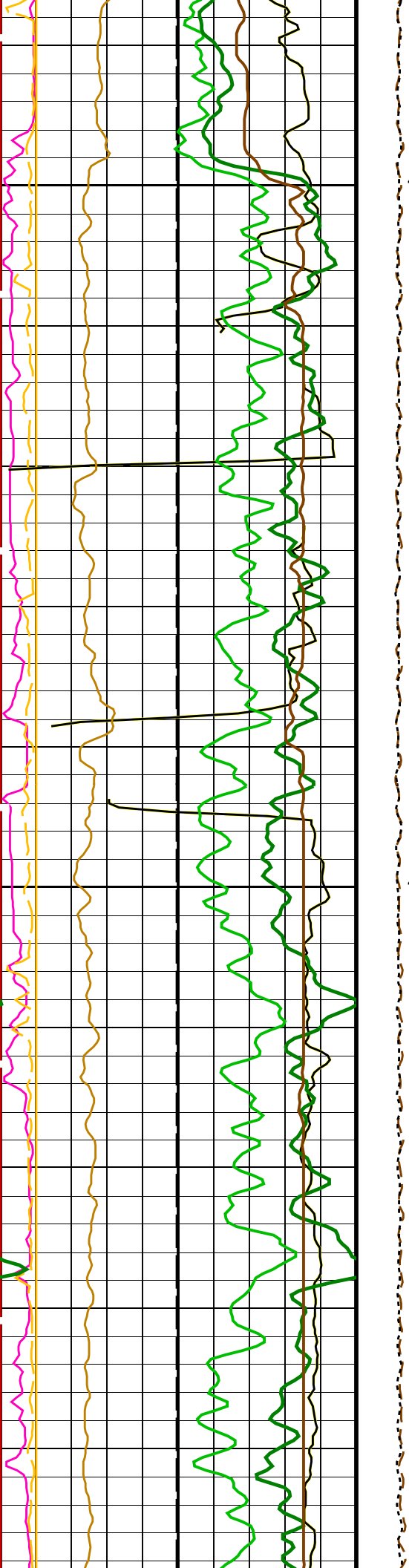




4550

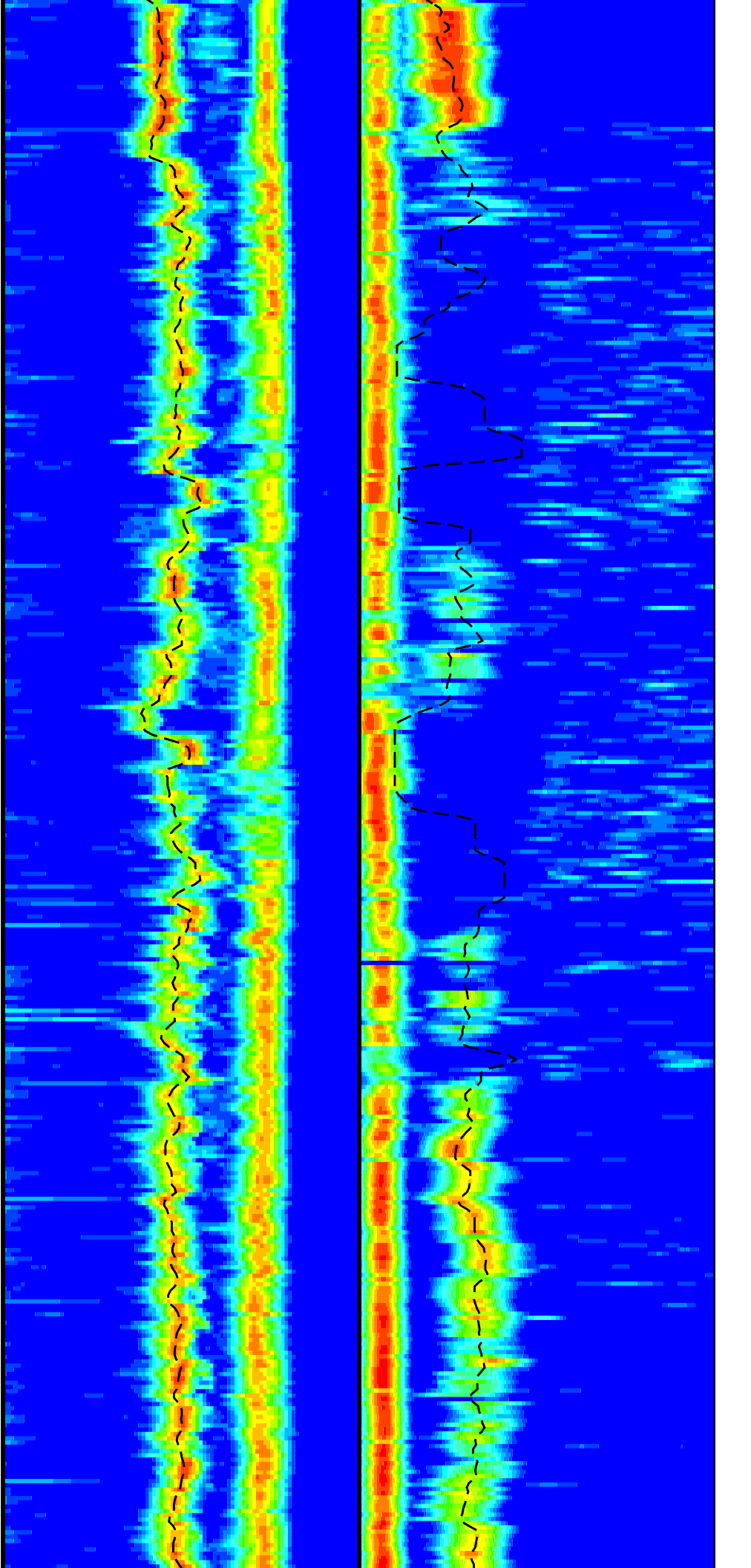
4575

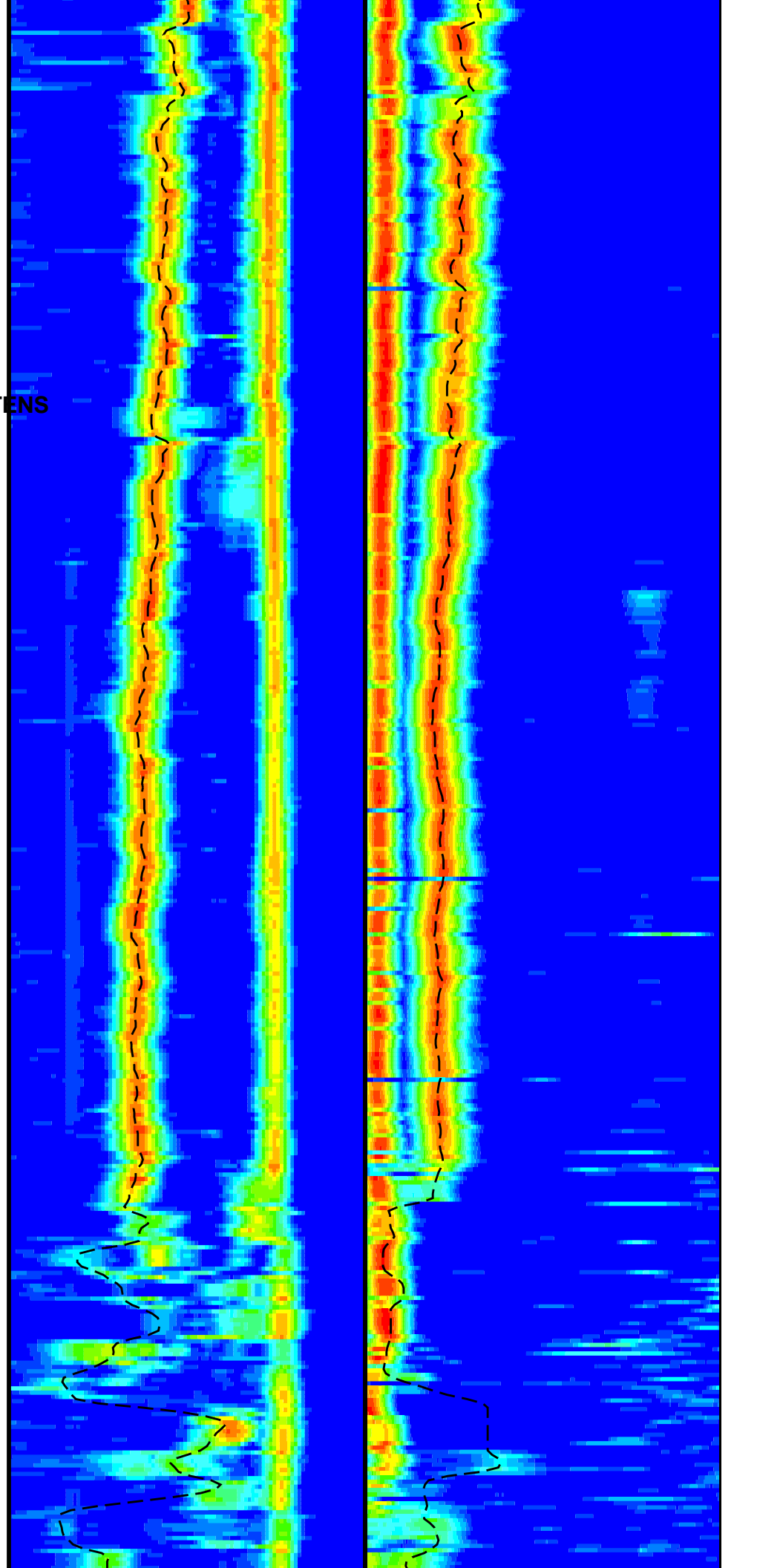
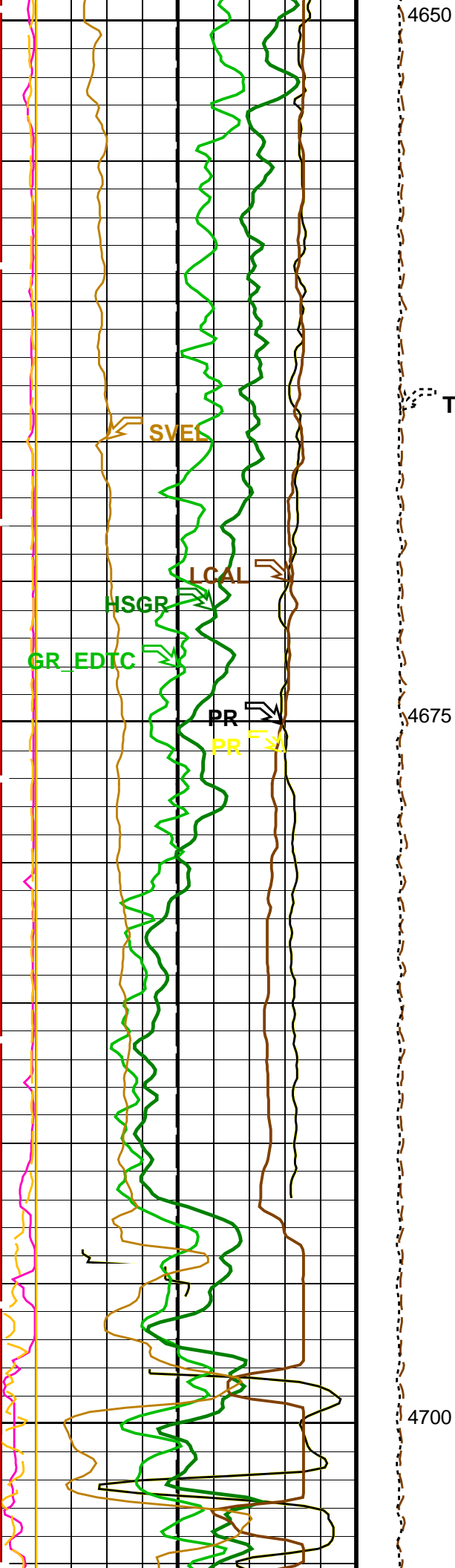


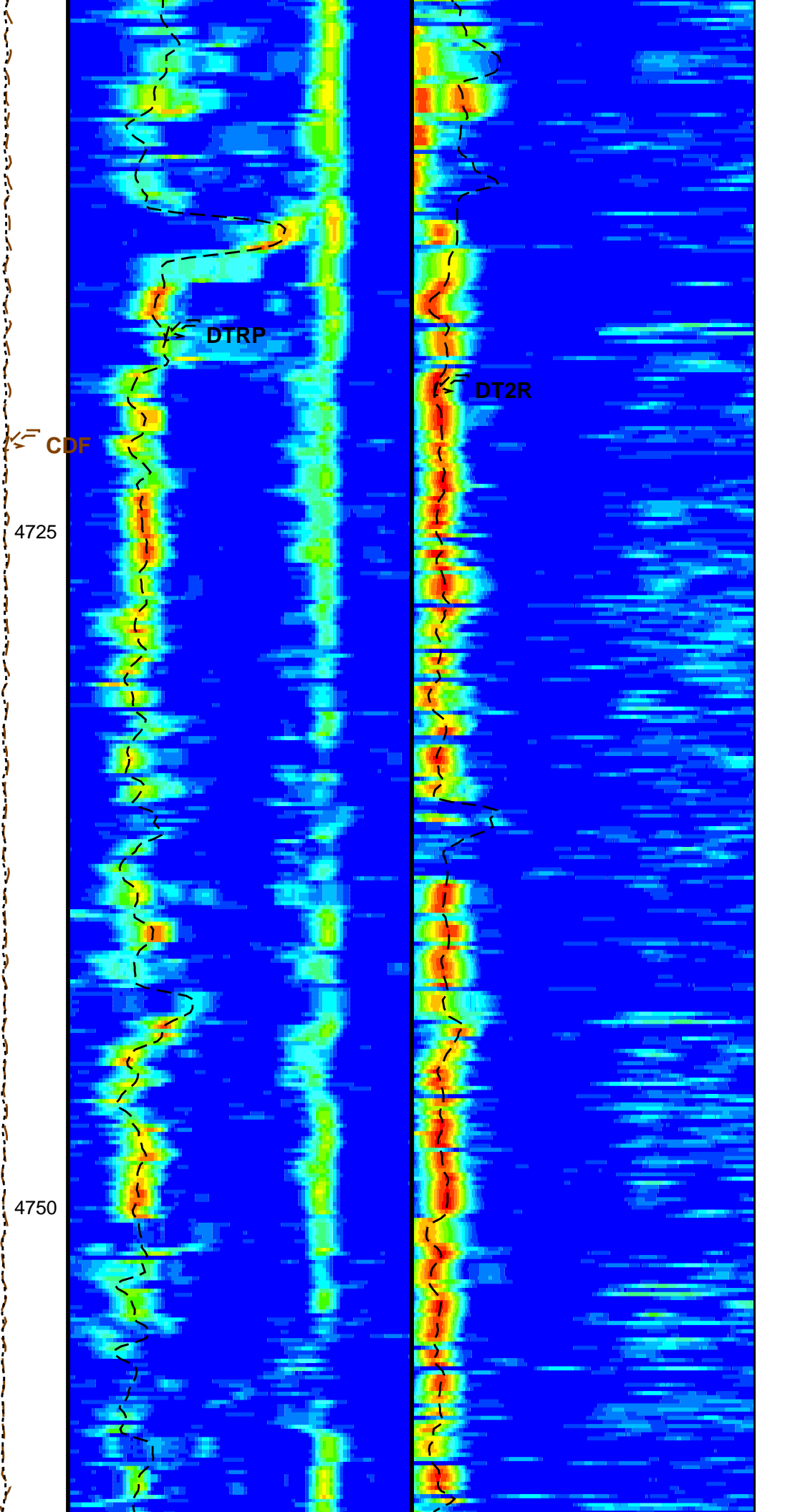
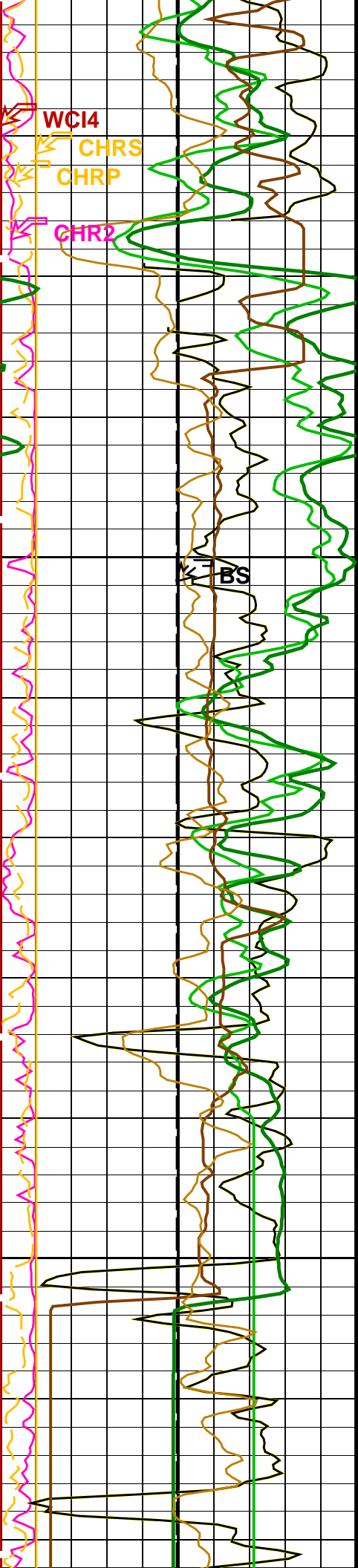


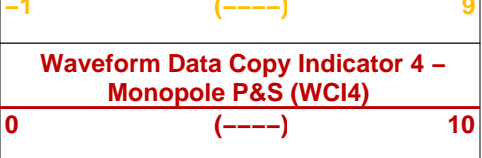
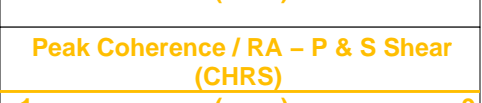
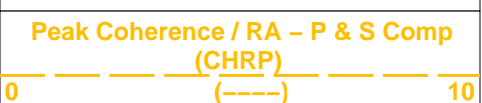
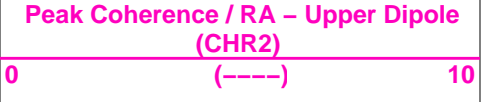
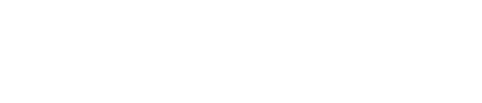
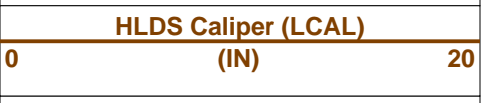
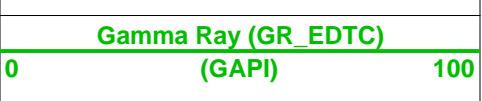
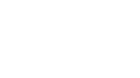
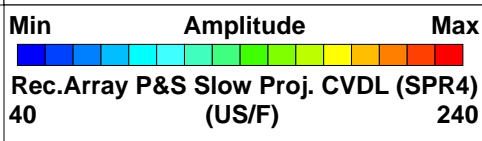
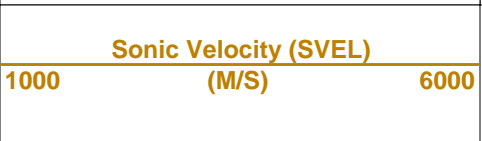
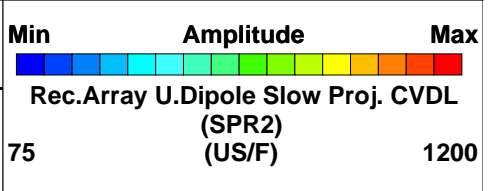
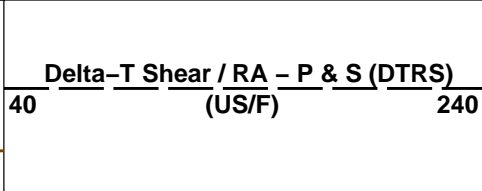
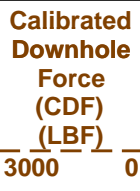
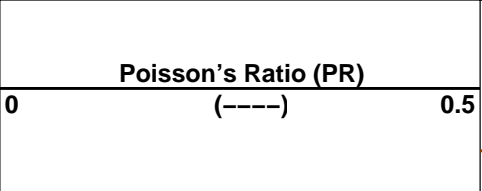
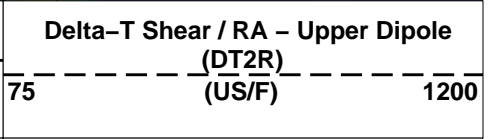
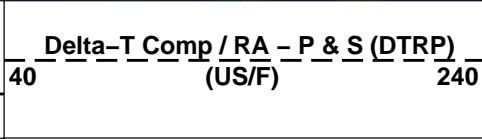
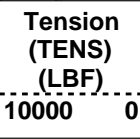
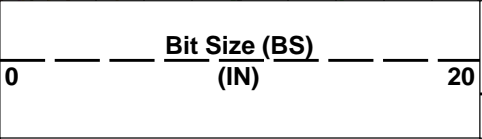
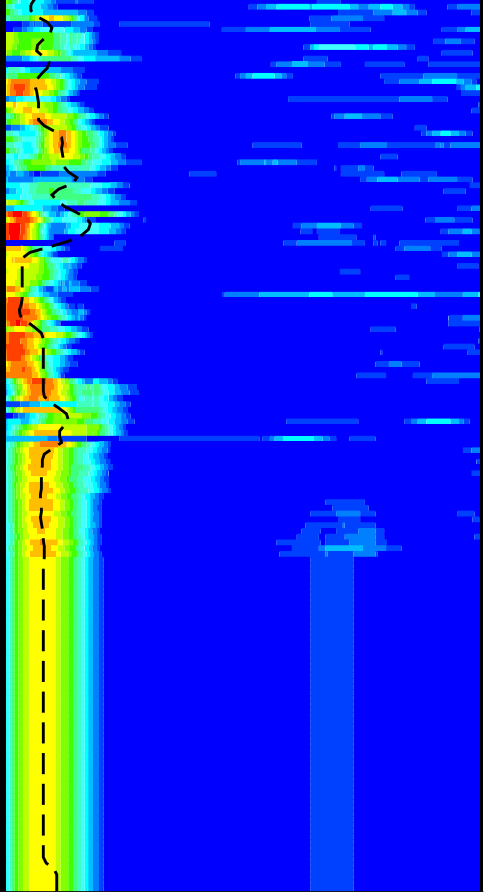
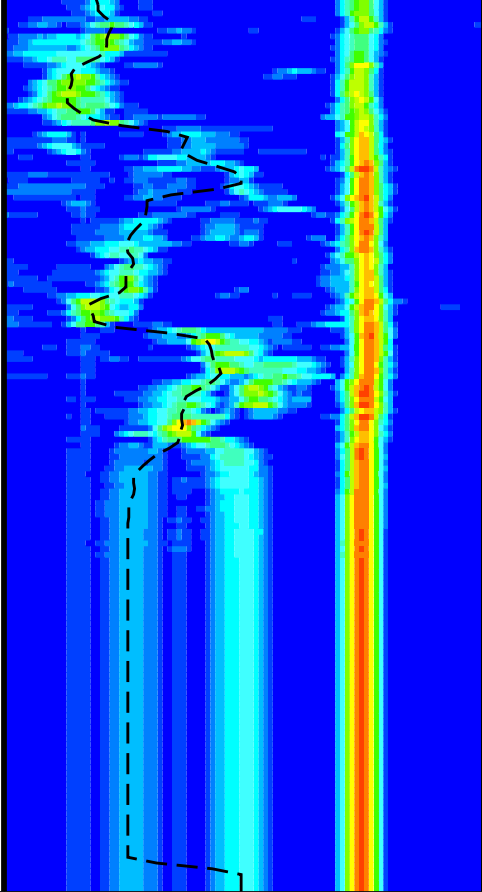
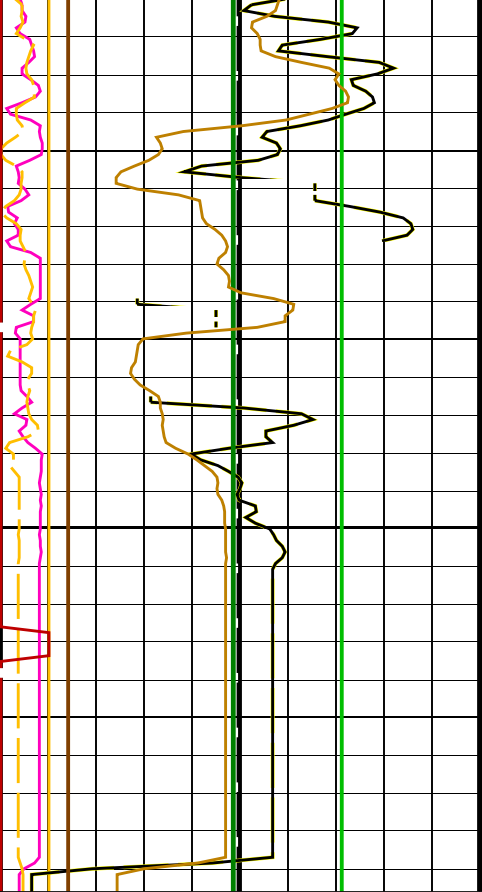
4600

4625









PIP SUMMARY

Time Mark Every 60 S

Parameters

DLIS Name	Description	Value	
DSST-B: Dipole Shear Imager - B			
AGC1	Automatic Gain Control 1	ON	
AGC2	Automatic Gain Control 2	ON	
AGC3	Automatic Gain Control 3	ON	
AGC4	Automatic Gain Control 4	ON	
AGC5	Automatic Gain Control 5	ON	
AGCX	Automatic Gain Control X	ON	
BARS_MTR1	Length for Monopole Transmitter to Receiver 1	2.7432	M
BHS	Borehole Status	OPEN	
BHT	Bottom Hole Temperature (used in calculations)	21	DEGC
CASF	Label Casing Function - Monopole P&S	50	
CDTS	C-Delta-T Shale	100	US/F
COLL	Label Slowness Lower Limit - Monopole P&S Compressional	65	US/F
COUL	Label Slowness Upper Limit - Monopole P&S Compressional	175	US/F
DDE1	Digitizing Delay 1	0	US
DDE2	Digitizing Delay 2	0	US
DDE3	Digitizing Delay 3	0	US
DDE4	Digitizing Delay 4	0	US
DDE5	Digitizing Delay 5	0	US
DDEX	Digitizing Delay X	0	US
DLCS	Label Compressional Source - Dipole Shear	USE	
DLHS	Label Hole Diameter Source for SOBS Channel	AUTO	
DSHL	Label Slowness Lower Limit - Dipole Shear	75	US/F
DSHU	Label Slowness Upper Limit - Dipole Shear	600	US/F
DSI1	Digitizer Sample Interval 1	40	US
DSI2	Digitizer Sample Interval 2	40	US
DSI3	Digitizer Sample Interval 3	40	US
DSI4	Digitizer Sample Interval 4	10	US
DSI5	Digitizer Sample Interval 5	10	US
DSIX	Digitizer Sample Interval X	40	US
DTCS	Compressional Delta-T Source for DTCO Channel	PS_COMP	
DTF	Delta-T Fluid	193	US/F
DTM	Delta-T Matrix	56	US/F
DTSS	Shear Delta-T Source for DTSM Channel	UPPER_DIPOLE	
DWC1	Digitizer Word Count 1	512	
DWC2	Digitizer Word Count 2	512	
DWC3	Digitizer Word Count 3	512	
DWC4	Digitizer Word Count 4	512	
DWC5	Digitizer Word Count 5	512	
DWCX	Digitizer Word Count X	512	
FDE1	Firing Delay 1	0	
FDE2	Firing Delay 2	0	
FDE3	Firing Delay 3	0	
FDE4	Firing Delay 4	0	
FDE5	Firing Delay 5	0	
FDEX	Firing Delay X	0	
FGM5	First Motion Gate Moveout 5	40	US/F
FGMX	First Motion Gate Moveout X	40	US/F
FILG	Label Fill Gap Control - Monopole P&S	COMP_SHEAR	
FMG5	First Motion Minimum Gate 5	500	US
FMGX	First Motion Minimum Gate X	500	US
FMLL	Slowness Lower Limit - FMD	40	US/F
FMRC	Restart Control - FMD	CONTINUE	
FMT5	First Motion Threshold 5	UP	
FMTX	First Motion Threshold X	NONE	
FMUL	Slowness Upper Limit - FMD	180	US/F
FNC5	First Motion Noise Counter Input 5	ALO	
FNCX	First Motion Noise Counter Input X	ALO	
FPM	Processing Mode - FMD	NONE	
FTD5	First Motion Threshold Direction 5	UP	
FTDX	First Motion Threshold Direction X	UP	
GAI1	Manual Gain 1	10	
GAI2	Manual Gain 2	10	
GAI3	Manual Gain 3	6	
GAI4	Manual Gain 4	16	
GAI5	Manual Gain 5	16	
GAIX	Manual Gain X	10	
GCSE	Generalized Caliper Selection	LCAL	
GDEV	Average Angular Deviation of Borehole from Normal	0	DEG
GDT1	Gain Delta-T 1	800	US/F
GDT2	Gain Delta-T 2	800	US/F
GDT3	Gain Delta-T 3	800	US/F

GDT3	Gain Delta-T 3	800	US/F
GDT4	Gain Delta-T 4	160	US/F
GDT5	Gain Delta-T 5	160	US/F
GDTX	Gain Delta-T X	800	US/F
GGRD	Geothermal Gradient	0.018227	DC/M
GIN1	Gain Interval 1	15360	US
GIN2	Gain Interval 2	15360	US
GIN3	Gain Interval 3	15360	US
GIN4	Gain Interval 4	2560	US
GIN5	Gain Interval 5	1600	US
GINX	Gain Interval X	15360	US
GRSE	Generalized Mud Resistivity Selection	CHART_GEN 9	
GTSE	Generalized Temperature Selection	LINEAR_ESTIMATE	
HPF1	High Pass Filter 1	F80	
HPF2	High Pass Filter 2	F80	
HPF3	High Pass Filter 3	F80	
HPF4	High Pass Filter 4	F8K	
HPF5	High Pass Filter 5	F8K	
HPFX	High Pass Filter X	F80	
ISSBAR	Barite Mud Switch	BARITE	
ITTS	Integrated Transit Time Source	DTCO	
LFC	Label Formation Character - Monopole P&S	DYNAMIC	
LPF1	Low Pass Filter 1	F5K	
LPF2	Low Pass Filter 2	F5K	
LPF3	Low Pass Filter 3	F5K	
LPF4	Low Pass Filter 4	F30K	
LPF5	Low Pass Filter 5	F30K	
LPFX	Low Pass Filter X	F5K	
LTXG	Lower Dipole Transmitter Geometry	156	IN
MAI5	Slowness Averaging Interval - FMD	42	IN
MATR	Rock Matrix for Neutron Porosity Corrections	LIMESTONE	
MCS	Mean Casing Slowness	57	US/F
MDS5	Multishot Delta-T Scatter - FMD	20	US
MTXG	Monopole Transmitter Geometry	186	IN
MUX1	Sum Difference Multiplexor Input 1	RR	
MUX2	Sum Difference Multiplexor Input 2	RR	
MUX3	Sum Difference Multiplexor Input 3	RR	
MUX4	Sum Difference Multiplexor Input 4	RR	
MUX5	Sum Difference Multiplexor Input 5	RR	
MUXX	Sum Difference Multiplexor Input X	RR	
NTI5	Number Threshold Items 5	0	
NTIX	Number Threshold Items X	0	
NWI1	Number Waveform Items 1	8	
NWI2	Number Waveform Items 2	8	
NWI3	Number Waveform Items 3	0	
NWI4	Number Waveform Items 4	8	
NWI5	Number Waveform Items 5	0	
NWIX	Number Waveform Items X	0	
NWS1	Number Waveforms Stacked 1	1	
NWS2	Number Waveforms Stacked 2	1	
NWS3	Number Waveforms Stacked 3	1	
NWS4	Number Waveforms Stacked 4	1	
NWS5	Number Waveforms Stacked 5	1	
NWSX	Number Waveforms Stacked X	1	
RATE	Firing Rate	R7	
RSMN	Label Shear/Compressional Minimum Ratio - Monopole P&S	1.4	
RSMX	Label Shear/Compressional Maximum Ratio - Monopole P&S	2.12	
RX1G	Receiver 1 Geometry	294	IN
RX2G	Receiver 2 Geometry	300	IN
RX3G	Receiver 3 Geometry	306	IN
RX4G	Receiver 4 Geometry	312	IN
RX5G	Receiver 5 Geometry	318	IN
RX6G	Receiver 6 Geometry	324	IN
RX7G	Receiver 7 Geometry	330	IN
RX8G	Receiver 8 Geometry	336	IN
SAM1	DSST Sonic Acquisition Mode 1 - Lower Dipole Mode	LFD_EVEN	
SAM2	DSST Sonic Acquisition Mode 2 - Upper Dipole Mode	ODD	
SAM3	DSST Sonic Acquisition Mode 3 - Monopole Mode for Stoneley	OFF	
SAM4	DSST Sonic Acquisition Mode 4 - Monopole Mode for P&S	EVEN	
SAM5	DSST Sonic Acquisition Mode 5 - Monopole Mode for FMD	OFF	
SAMX	DSST Sonic Acquisition Mode X - Both Dipoles or Monopole Mode for Expert	OFF	
SAS1	STC Sonic Array Status - Lower Dipole	255	
SAS2	STC Sonic Array Status - Upper Dipole	255	
SAS3	STC Sonic Array Status - Monopole Stoneley	255	
SAS4	STC Sonic Array Status - Monopole P&S	255	
SAS5	Sonic Array Status - FMD	255	
SBO1	STC Search Band Offset - Lower Dipole	3000	US
SBO2	STC Search Band Offset - Upper Dipole	3000	US
SBO3	STC Search Band Offset - Monopole Stoneley	3000	US
SBO4	STC Search Band Offset - Monopole P&S	500	US
SBR4	STC Baseline Removal - Monopole P&S	ON	
SBW1	STC Search Bandwidth - Lower Dipole	8000	US
SBW2	STC Search Bandwidth - Upper Dipole	8000	US
SBW3	STC Search Bandwidth - Monopole Stoneley	8000	US

SBW4	STC Search Bandwidth – Monopole P&S	2000	US
SFC1	STC Formation Character – Lower Dipole	SELECTABLE	
SFC2	STC Formation Character – Upper Dipole	SELECTABLE	
SFC3	STC Formation Character – Monopole Stoneley	SELECTABLE	
SFC4	STC Formation Character – Monopole P&S	SELECTABLE	
SFM1	STC Filter – Lower Dipole	B.3–1.5K	
SFM2	STC Filter – Upper Dipole	B1–2K	
SFM3	STC Filter – Monopole Stoneley	B.5–1.5K	
SFM4	STC Filter – Monopole P&S	B3–20K	
SHLL	Label Slowness Lower Limit – Monopole P&S Shear	235	US/F
SHT	Surface Hole Temperature	20	DEGC
SHUL	Label Slowness Upper Limit – Monopole P&S Shear	240	US/F
SLL1	STC Slowness Lower Limit – Lower Dipole	75	US/F
SLL2	STC Slowness Lower Limit – Upper Dipole	75	US/F
SLL3	STC Slowness Lower Limit – Monopole Stoneley	180	US/F
SLL4	STC Slowness Lower Limit – Monopole P&S	40	US/F
SPFS	Sonic Porosity Formula	RAYMER_HUNT	
SPSO	Sonic Porosity Source	DTCO	
SST1	STC Slowness Step – Lower Dipole	4	US/F
SST2	STC Slowness Step – Upper Dipole	4	US/F
SST3	STC Slowness Step – Monopole Stoneley	4	US/F
SST4	STC Slowness Step – Monopole P&S	2	US/F
SSW1	STC Source Waveform – Lower Dipole	WF_SAM1	
SSW2	STC Source Waveform – Upper Dipole	WF_SAM2	
SSW3	STC Source Waveform – Monopole Stoneley	WF_SAM3	
SSW4	STC Source Waveform – Monopole P&S	WF_SAM4	
STLL	Label Slowness Lower Limit – Monopole Stoneley	180	US/F
STUL	Label Slowness Upper Limit – Monopole Stoneley	780	US/F
SUL1	STC Slowness Upper Limit – Lower Dipole	1200	US/F
SUL2	STC Slowness Upper Limit – Upper Dipole	1200	US/F
SUL3	STC Slowness Upper Limit – Monopole Stoneley	780	US/F
SUL4	STC Slowness Upper Limit – Monopole P&S	240	US/F
SWD1	STC Slowness Width – Lower Dipole	40	US/F
SWD2	STC Slowness Width – Upper Dipole	40	US/F
SWD3	STC Slowness Width – Monopole Stoneley	40	US/F
SWD4	STC Slowness Width – Monopole P&S	10	US/F
TBDB	Tool String Bottom to DSST Bottom	95.25	IN
TBF1	STC Time for Baseline Fill – Lower Dipole	0	US
TBF2	STC Time for Baseline Fill – Upper Dipole	0	US
TBF3	STC Time for Baseline Fill – Monopole Stoneley	0	US
TBF4	STC Time for Baseline Fill – Monopole P&S	300	US
TLL1	STC Time Lower Limit – Lower Dipole	600	US
TLL2	STC Time Lower Limit – Upper Dipole	600	US
TLL3	STC Time Lower Limit – Monopole Stoneley	600	US
TLL4	STC Time Lower Limit – Monopole P&S	150	US
TST1	STC Time Step – Lower Dipole	200	US
TST2	STC Time Step – Upper Dipole	200	US
TST3	STC Time Step – Monopole Stoneley	200	US
TST4	STC Time Step – Monopole P&S	50	US
TTDB	Tool String Top to DSST Bottom	1656.11	IN
TUL1	STC Time Upper Limit – Lower Dipole	20440	US
TUL2	STC Time Upper Limit – Upper Dipole	20200	US
TUL3	STC Time Upper Limit – Monopole Stoneley	12000	US
TUL4	STC Time Upper Limit – Monopole P&S	3660	US
TWA1	Transmitter Waveform Amplitude 1	179	
TWA2	Transmitter Waveform Amplitude 2	179	
TWA3	Transmitter Waveform Amplitude 3	166	
TWA4	Transmitter Waveform Amplitude 4	150	
TWA5	Transmitter Waveform Amplitude 5	150	
TWAX	Transmitter Waveform Amplitude X	179	
TWD1	STC Time Width – Lower Dipole	2000	US
TWD2	STC Time Width – Upper Dipole	2000	US
TWD3	STC Time Width – Monopole Stoneley	2000	US
TWD4	STC Time Width – Monopole P&S	1000	US
TWI1	STC Integration Time Window – Lower Dipole	1600	US
TWI2	STC Integration Time Window – Upper Dipole	1600	US
TWI3	STC Integration Time Window – Monopole Stoneley	2400	US
TWI4	STC Integration Time Window – Monopole P&S	500	US
TWR1	Transmitter Waveform Sample Rate 1	20	US
TWR2	Transmitter Waveform Sample Rate 2	5	US
TWR3	Transmitter Waveform Sample Rate 3	5	US
TWR4	Transmitter Waveform Sample Rate 4	5	US
TWR5	Transmitter Waveform Sample Rate 5	5	US
TWRX	Transmitter Waveform Sample Rate X	5	US
TWS1	Transmitter Waveform Select 1	2	
TWS2	Transmitter Waveform Select 2	0	
TWS3	Transmitter Waveform Select 3	4	
TWS4	Transmitter Waveform Select 4	6	
TWS5	Transmitter Waveform Select 5	6	
TWSX	Transmitter Waveform Select X	0	
UTXG	Upper Dipole Transmitter Geometry	162	IN
WFDTSP1	SAM1 Waveform Delta for Spectrum	0	US/F
WFDTSP2	SAM2 Waveform Delta for Spectrum	0	US/F
WFDTSP3	SAM3 Waveform Delta for Spectrum	0	US/F
WFDTSP4	SAM4 Waveform Delta for Spectrum	0	US/F

WFDTSP4	SAM4 Waveform Delta for Spectrum	0	US/F
WFDTSPX	SAMX Waveform Delta for Spectrum	0	US
WFLLSP1	SAM1 Waveform Lower Limit for Spectrum	0	US
WFLLSP2	SAM2 Waveform Lower Limit for Spectrum	0	US
WFLLSP3	SAM3 Waveform Lower Limit for Spectrum	0	US
WFLLSP4	SAM4 Waveform Lower Limit for Spectrum	0	US
WFLLSPX	SAMX Waveform Lower Limit for Spectrum	0	US
WFM1	Waveform Mode 1	W1	
WFM2	Waveform Mode 2	W1	
WFM3	Waveform Mode 3	W1	
WFM4	Waveform Mode 4	W1	
WFM5	Waveform Mode 5	W1	
WFMX	Waveform Mode X	W1	
WFULSP1	SAM1 Waveform Upper Limit for Spectrum	20000	US
WFULSP2	SAM2 Waveform Upper Limit for Spectrum	20000	US
WFULSP3	SAM3 Waveform Upper Limit for Spectrum	20000	US
WFULSP4	SAM4 Waveform Upper Limit for Spectrum	5000	US
WFULSPX	SAMX Waveform Upper Limit for Spectrum	20000	US
XMT1	Transmitter Select 1	DLO	
XMT2	Transmitter Select 2	DUP	
XMT3	Transmitter Select 3	MONO	
XMT4	Transmitter Select 4	MONO	
XMT5	Transmitter Select 5	MONO	
XMTX	Transmitter Select X	DUP	
HRLT-B: High Resolution Laterolog Array - B			
BHS	Borehole Status	OPEN	
BHT	Bottom Hole Temperature (used in calculations)	21	DEGC
CALSTAT	HRLTB Calibration Status	SHALLOW_DONE	
CALTEMP	HRLTB Calibration Temperature	23.3869	DEGC
FREQ0	HRLT Frequency Index for Mode 0	32	
FREQ1	HRLT Frequency Index for Mode 1	128	
FREQ2	HRLT Frequency Index for Mode 2	104	
FREQ3	HRLT Frequency Index for Mode 3	86	
FREQ4	HRLT Frequency Index for Mode 4	56	
FREQ5	HRLT Frequency Index for Mode 5	44	
FREQ6	HRLT Frequency Index for Mode 6	116	
GCSE	Generalized Caliper Selection	LCAL	
GDEV	Average Angular Deviation of Borehole from Normal	0	DEG
GGRD	Geothermal Gradient	0.018227	DC/M
GRSE	Generalized Mud Resistivity Selection	CHART_GEN_9	
GTSE	Generalized Temperature Selection	LINEAR_ESTIMATE	
ISSBAR	Barite Mud Switch	BARITE	
KFAC_HRLT	HRLT K Factor Option	SONDE	
LOOPCOEF_S	HRLT Loop Coefficient for Shallow Modes	LOW	
LOOPMOD0	HRLT Mode 0 Loop Mode	OFF	
LOOPMOD1	HRLT Mode 1 Loop Mode	OFF	
LOOPMOD2	HRLT Mode 2 Loop Mode	OFF	
LOOPMOD3	HRLT Mode 3 Loop Mode	OFF	
LOOPMOD4	HRLT Mode 4 Loop Mode	OFF	
LOOPMOD5	HRLT Mode 5 Loop Mode	OFF	
LOOPMOD6	HRLT Mode 6 Loop Mode	OFF	
MATR	Rock Matrix for Neutron Porosity Corrections	LIMESTONE	
PROCVN	Inversion Selection	ON	
PROCMFL	Inversion Micro-Resistivity Selection	NO_EXTERNAL_RXO	
PROCMFO	Mechanical Standoff Fin Size	0	IN
PROCRM	Processing Mud Resistivity Select	HRLT_Compute	
PROCSPO	Sonde Position	Centered	
SHT	Surface Hole Temperature	20	DEGC
HLDS: Hostile Litho-Density Sonde			
CLCL	HLDS LS Control Loop Controller Mode	AUTO_DEFAULT	
CLCS	HLDS SS Control Loop Controller Mode	AUTO_DEFAULT	
CLLS	HLDS Mode Loop Long Spacing	AUTO	
CLSS	HLDS Mode Loop Short Spacing	AUTO	
DHC	Density Hole Correction	BS	
DPPM	Density Porosity Processing Mode	HIRS	
FD	Fluid Density	1	G/C3
LATC	HLDS Activation Correction	ON	
LLDL	HLDS LS Low Level Discriminator DAC	14000	
LLDS	HLDS SS Low Level Discriminator DAC	14000	
LLML	HLDS LS Low Level Discriminator Mode	AUTO	
LLMS	HLDS SS Low Level Discriminator Mode	AUTO	
MDEN	Matrix Density	2.6	G/C3
PHVL	HLDS Long Spacing High Voltage Setting	1000	V
PHVS	HLDS Short Spacing High Voltage Setting	1000	V
PSDL	HLDS LS Pulse Shape Compensation DAC	30000	
PSDS	HLDS SS Pulse Shape Compensation DAC	30000	
PSML	HLDS LS Pulse Shape Compensation Mode	AUTO	
PSMS	HLDS SS Pulse Shape Compensation Mode	AUTO	
HNGS-BA: Hostile Natural Gamma Ray Sonde			
BAR1	HNGS Detector 1 Barite Constant	1	
BAR2	HNGS Detector 2 Barite Constant	1	
BHK	HNGS Borehole Potassium Correction Concentration	0	
BHS	Borehole Status	OPEN	
BHT	Bottom Hole Temperature (used in calculations)	21	DEGC
CSD1	Inner Casing Outer Diameter	0	IN

CSD2	Outer Casing Outer Diameter	0	IN
CSW1	Inner Casing Weight	0	LB/F
CSW2	Outer Casing Weight	0	LB/F
DBCC	HNGS Barite Constant Correction Flag	NONE	
GCSE	Generalized Caliper Selection	LCAL	
GDEV	Average Angular Deviation of Borehole from Normal	0	DEG
GGRD	Geothermal Gradient	0.018227	DC/M
GRSE	Generalized Mud Resistivity Selection	CHART_GEN 9	
GTSE	Generalized Temperature Selection	LINEAR_ESTIMATE	
H1P	HNGS Detector 1 Allow/Disallow In Processing	ALLOW	
H2P	HNGS Detector 2 Allow/Disallow In Processing	ALLOW	
HABK	HNGS Borehole Potassium Running Average	0.000444161	
HALF	HNGS Alpha Filter Length	60	IN
HCRB	HNGS Apply Borehole Potassium Correction	NONE	
HMWM	Mud Weighting Material	BARI	
HNPE	HNGS Processing Enable	YES	
ISSBAR	Barite Mud Switch	BARITE	
MATR	Rock Matrix for Neutron Porosity Corrections	LIMESTONE	
S1BI	HNGS Detector 1 Calibration Bismuth Count Rate	1.3	CPS
S2BI	HNGS Detector 2 Calibration Bismuth Count Rate	1.3	CPS
SGRC	HNGS Standard Gamma-Ray Correction Flag	YES	
SHT	Surface Hole Temperature	20	DEGC
TPOS	Tool Position	ECCE	
VBA1	HNGS Detector 1 Variable Barite Factor Running Average	0.969742	
VBA2	HNGS Detector 2 Variable Barite Factor Running Average	0.968706	
EDTC-B: Enhanced DTS Cartridge			
BHFL	Borehole Fluid Type	WATER	
BHS	Borehole Status	OPEN	
BHT	Bottom Hole Temperature (used in calculations)	21	DEGC
BSCO	Borehole Salinity Correction Option	NO	
CCCO	Casing & Cement Thickness Correction Option	NO	
DPPM	Density Porosity Processing Mode	HIRS	
FSAL	Formation Salinity	-50000	PPM
FSCO	Formation Salinity Correction Option	NO	
GCSE	Generalized Caliper Selection	LCAL	
GDEV	Average Angular Deviation of Borehole from Normal	0	DEG
GGRD	Geothermal Gradient	0.018227	DC/M
GRSE	Generalized Mud Resistivity Selection	CHART_GEN 9	
GTSE	Generalized Temperature Selection	LINEAR_ESTIMATE	
HSCO	Hole Size Correction Option	YES	
ISSBAR	Barite Mud Switch	BARITE	
ISSBAR_EDTC	Nuclear Mud Type	BARITE	
MATR	Rock Matrix for Neutron Porosity Corrections	LIMESTONE	
MCCO	Mud Cake Correction Option	NO	
MCOR	Mud Correction	BARI	
MWCO	Mud Weight Correction Option	YES	
PTCO	Pressure/Temperature Correction Option	NO	
SDAT	Standoff Data Source	SOCN	
SHT	Surface Hole Temperature	20	DEGC
SOCN	Standoff Distance	0.5	IN
SOCO	Standoff Correction Option	NO	
TPOS_EDTC	EDTC Tool Centered/Eccentered	Eccentered	
U-ETELM_EDTS	Telemetry Mode for eWAFE	Standard_EDTS	
U-TELM_EDTS	Telemetry Mode for WAFE	Standard_EDTS	
System and Miscellaneous			
ALTDCHAN	Name of alternate depth channel	SpeedCorrectedDepth	
BS	Bit Size	9.875	IN
BSAL	Borehole Salinity	35000.00	PPM
CSIZ	Current Casing Size	5.000	IN
CWEI	Casing Weight	168.00	LB/F
DFD	Drilling Fluid Density	1.32	G/C3
DO	Depth Offset for Playback	0.0	M
FLEV	Fluid Level	-50000.00	M
MST	Mud Sample Temperature	23.00	DEGC
PBVADP	Use alternate depth channel for playback	NO	
PP	Playback Processing	RECOMPUTE	
RMFS	Resistivity of Mud Filtrate Sample	-50000.0000	OHMM
RW	Resistivity of Connate Water	1.0000	OHMM
TD	Total Depth	4850.8	M
TDD	Total Depth - Driller	4850.80	M
TDL	Total Depth - Logger	4850.00	M
TWS	Temperature of Connate Water Sample	37.78	DEGC

Format: DSST_P_S_UPPER_VDL_COLOR Vertical Scale: 1:200 Graphics File Created: 10-Mar-2017 16:10

OP System Version: 19C0-187

DSST-B	19C0-187	HRLT-B	19C0-187
HLDS	19C0-187	LDSC-B	19C0-187
HNGC-B	19C0-187	HNGS-BA	19C0-187
EDTC-B	SKK-5169-EDTCB		

Input DLIS Files

DEFAULT	DSI_HRLA_LDL_NGS_017PUP	FN:26	PRODUCER	07-Mar-2017 13:04	4784.6 M	3755.7 M
---------	-------------------------	-------	----------	-------------------	----------	----------

Output DLIS Files

DEFAULT	DSI_HRLA_LDL_NGS_042PUP	FN:60	PRODUCER	10-Mar-2017 16:10		
---------	-------------------------	-------	----------	-------------------	--	--