

geoVISION Image Service

1:40 Measured Depth

Recorded Mode Data



Company: IODP
Well: U1517A
Field: TLC-04B
Rig Name: Joides Resolution
Expedition: 372
Country: New Zealand

Latitude: 38° 49' 46.32" S
Longitude: 178° 28' 33.318" E
Block: EXP372
FL1:
FL2:

UWID:
Rig Name: Joides Resolution
Rig Type: Drill Ship

 Log Measured From: - Drill Floor: 11.00 m
 Permanent Datum: - Mean Sea Level

 Ground Level: 725.20 m

Acquisition Dates:	15-Dec-2017 -- 17-Dec-2017	Other Services:
Log Interval:	736.00(m) -- 931.00(m)	SonicScope
Index Types:	Measured Depth	proVISION Plus
Index Scales:	1:40	geoVISION Images
Depth Source:	Driller's Depth	
Depth Sensor:	DES	
Print Type:	Final	
Spud Date:	16-Dec-2017	

Disclaimer

THE USE OF AND RELIANCE UPON THIS RECORDED-DATA BY THE HEREIN NAMED COMPANY (AND ANY OF ITS AFFILIATES, PARTNERS, REPRESENTATIVES, AGENTS, CONSULTANTS AND EMPLOYEES) IS SUBJECT TO THE TERMS AND CONDITIONS AGREED UPON BETWEEN SCHLUMBERGER AND THE COMPANY, INCLUDING: (a) RESTRICTIONS ON USE OF THE RECORDED-DATA; (b) DISCLAIMERS AND WAIVERS OF WARRANTIES AND REPRESENTATIONS REGARDING COMPANY'S USE AND RELIANCE UPON THE RECORDED-DATA; AND (c) CUSTOMER'S FULL AND SOLE RESPONSIBILITY FOR ANY INFERENCE DRAWN OR DECISION MADE IN CONNECTION WITH THE USE OF THIS RECORDED-DATA.

Run 1

FINAL GVR LOG 2

Software Version

Acquisition System		Version	
Maxwell 2017 SP3		7.3.92069.3100	
Computation	Description	Version	
RAB6Res	RAB6 Resistivity Computation Package for both Real-time and Recorded Mode	7.3.92069.3100	
RAB6GR	RAB6 Gamma Ray Computation Package for both Real-time and Recorded Mode	7.3.92069.3100	
SoftwareVersion_Tool	SoftwareVersion_System Version	SoftwareVersion_Loaded Version	
HSPM	20.3c.062	7.3.92069.3100	
Tool Elements	Description	Software Version	Firmware Version
RBEC	Electronics Chassis Assembly for RAB6-C	7.3.92069.3100	V8.6B

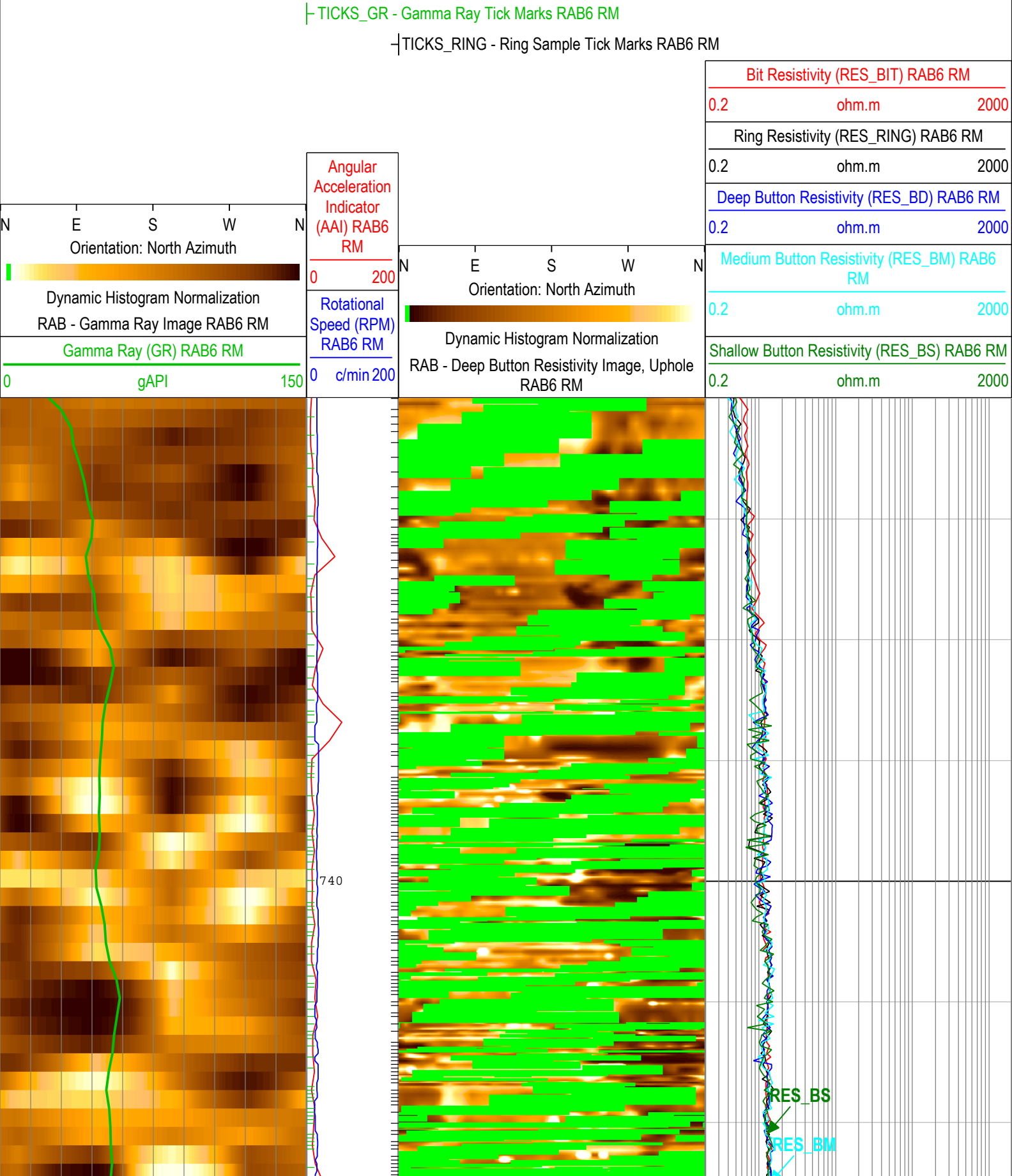
Pass Summary

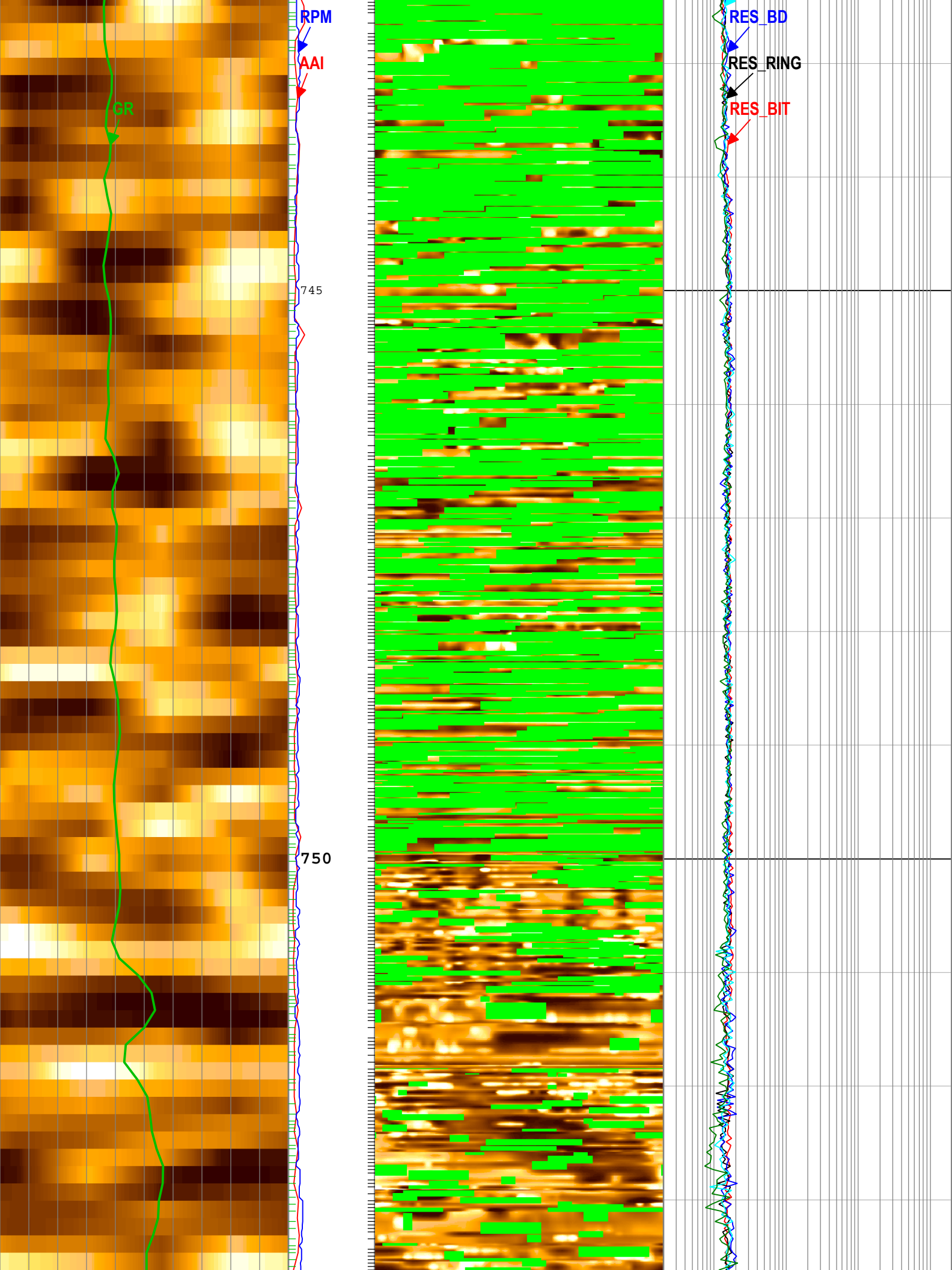
Run Name	Pass Objective	Direction	Top	Bottom	Start	Stop	Include Parallel Data
-----------------	-----------------------	------------------	------------	---------------	--------------	-------------	------------------------------

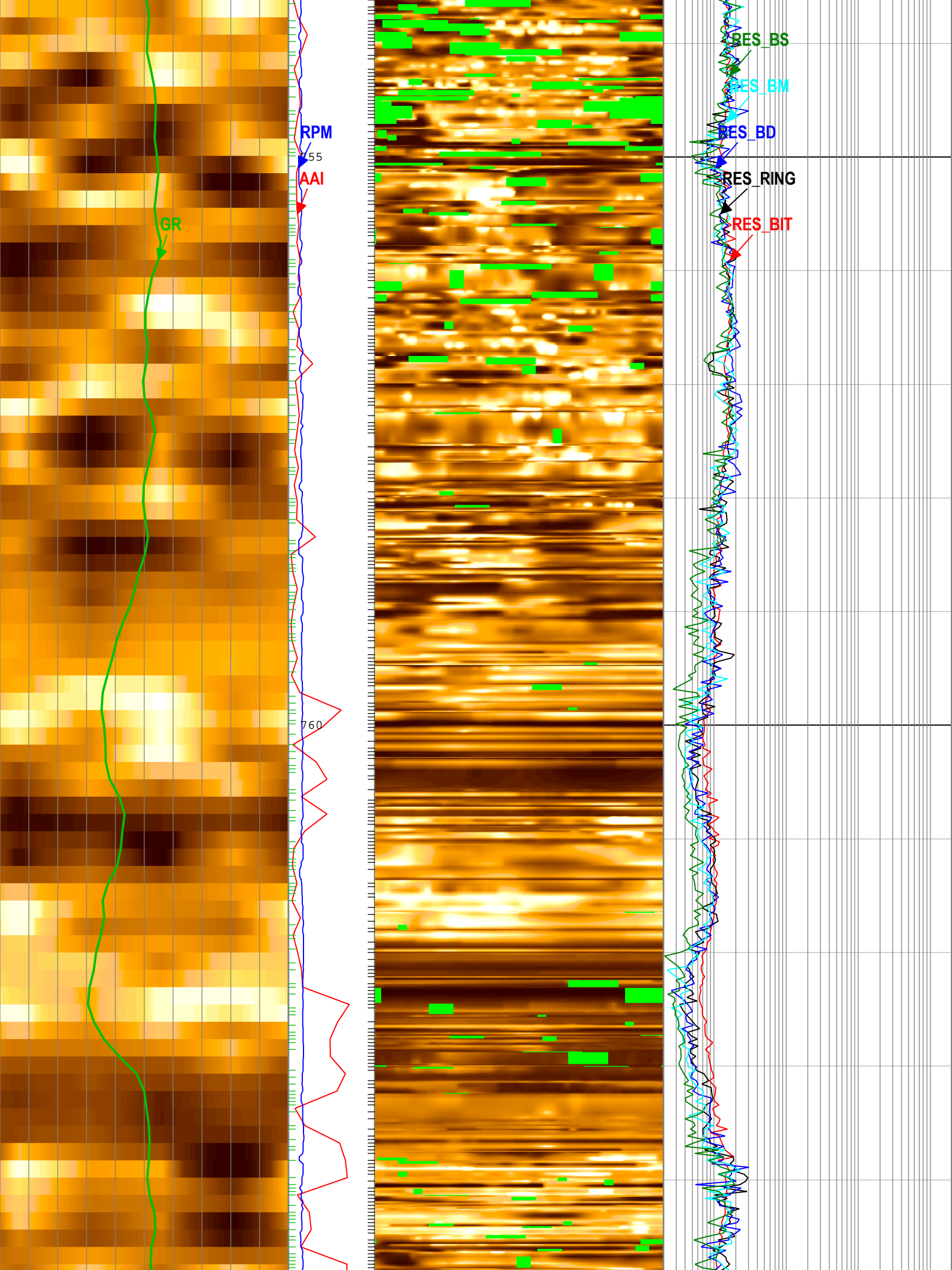
Run 1	Drilling	Down	682.50 m	940.92 m	15-Dec-2017 9:33:10 PM	17-Dec-2017 9:34:16 AM	Yes
-------	----------	------	----------	----------	---------------------------	---------------------------	-----

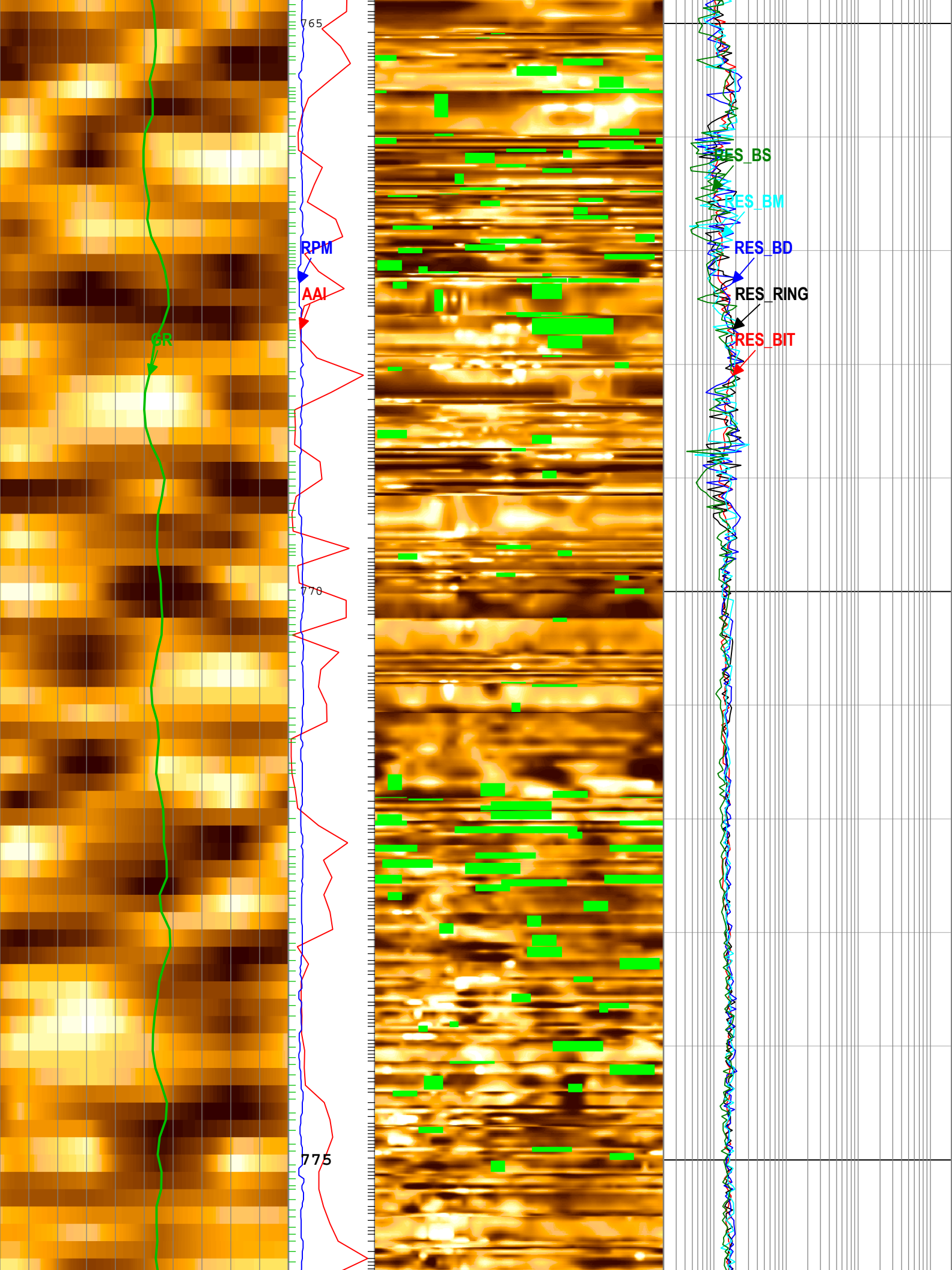
All depths are referenced to toolstring zero

Description: GVR GR Image, Button Image, Resistivity Format: Log (FINAL GVR LOG 2) Index Scale: 1:40 Index Unit: m Index Type: Measured Depth
Creation Date: 29-Dec-2017 20:49:41









765

RPM

AAI

BR

770

775

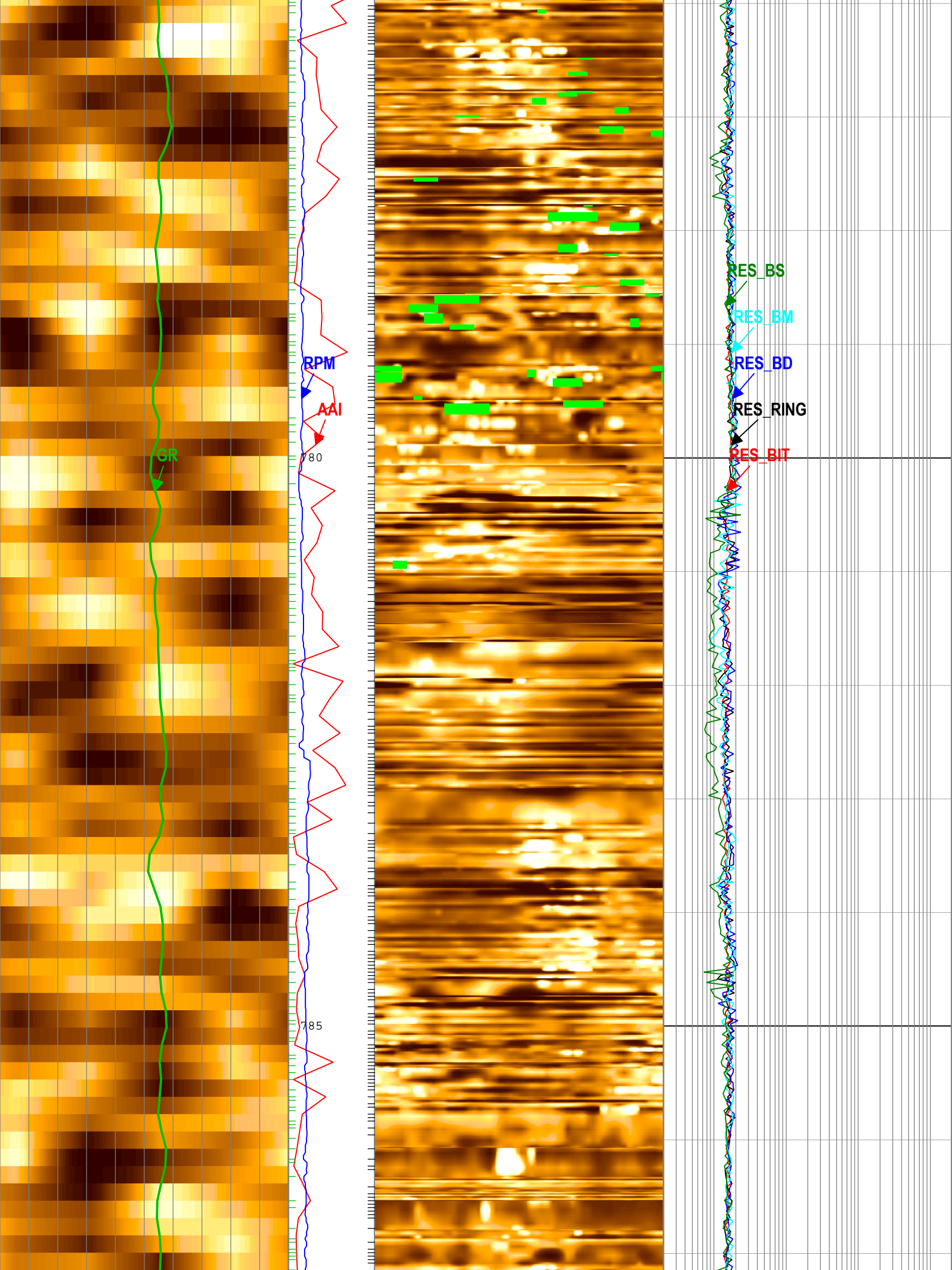
RES_BS

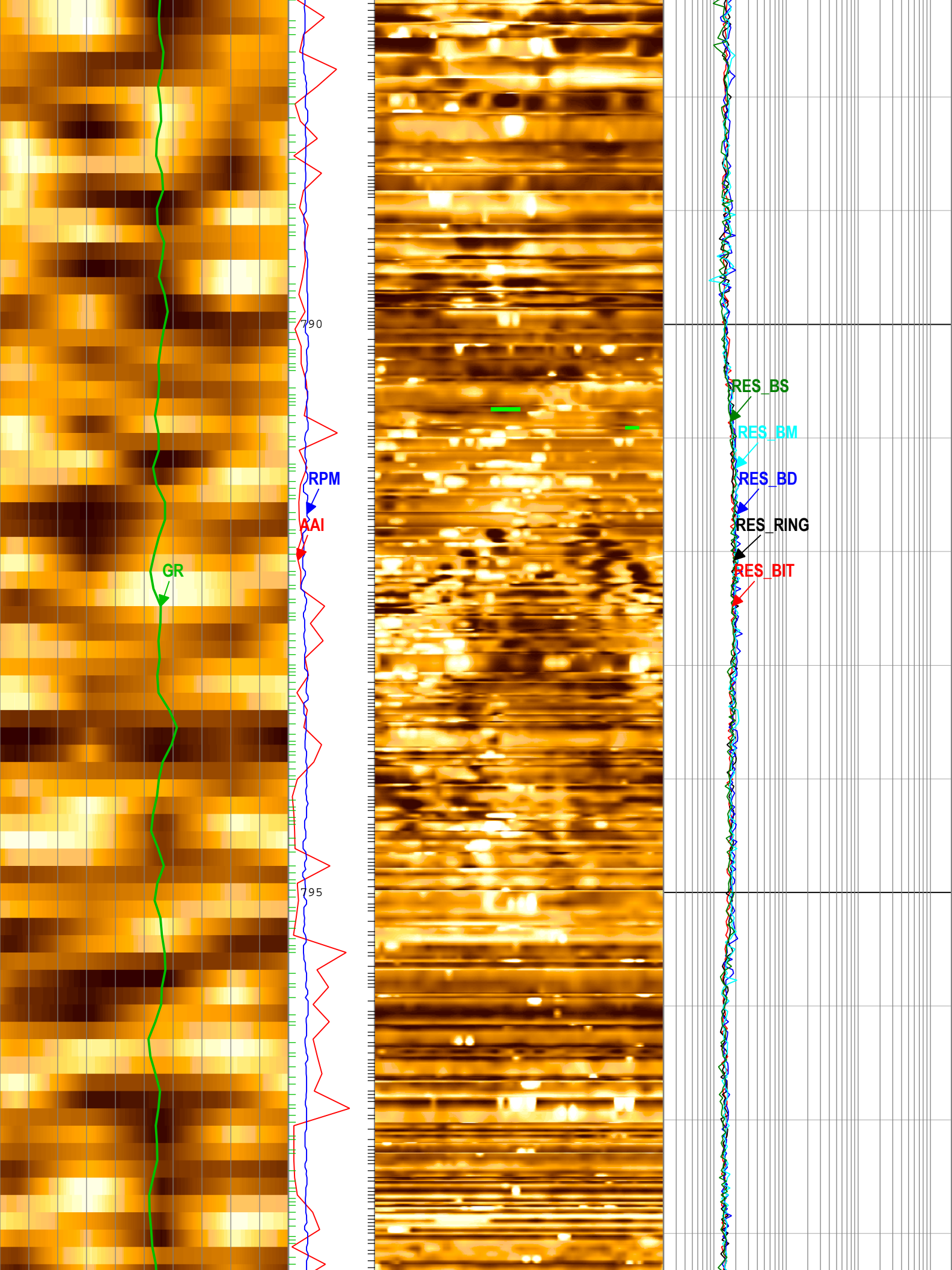
RES_BM

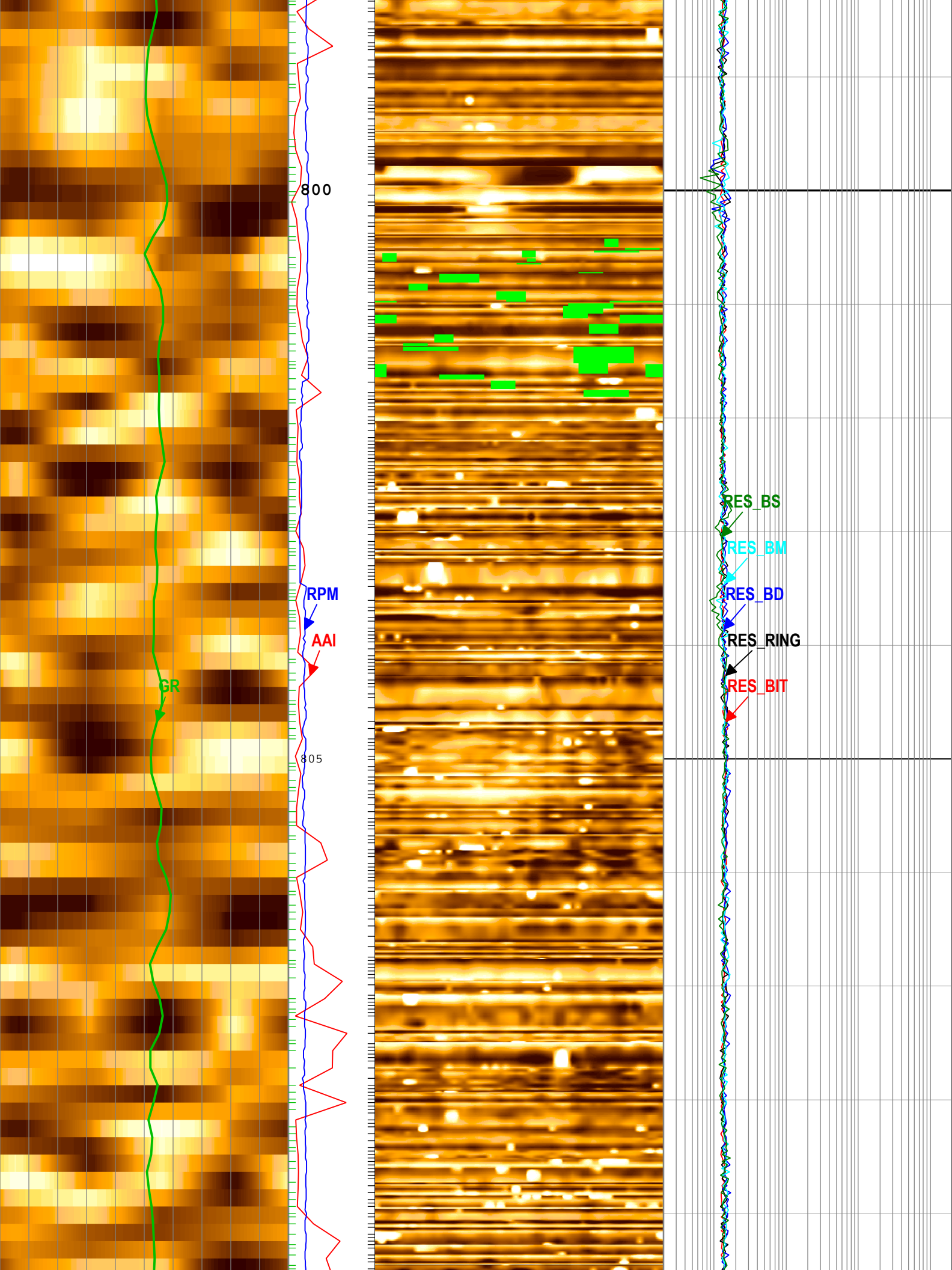
RES_BD

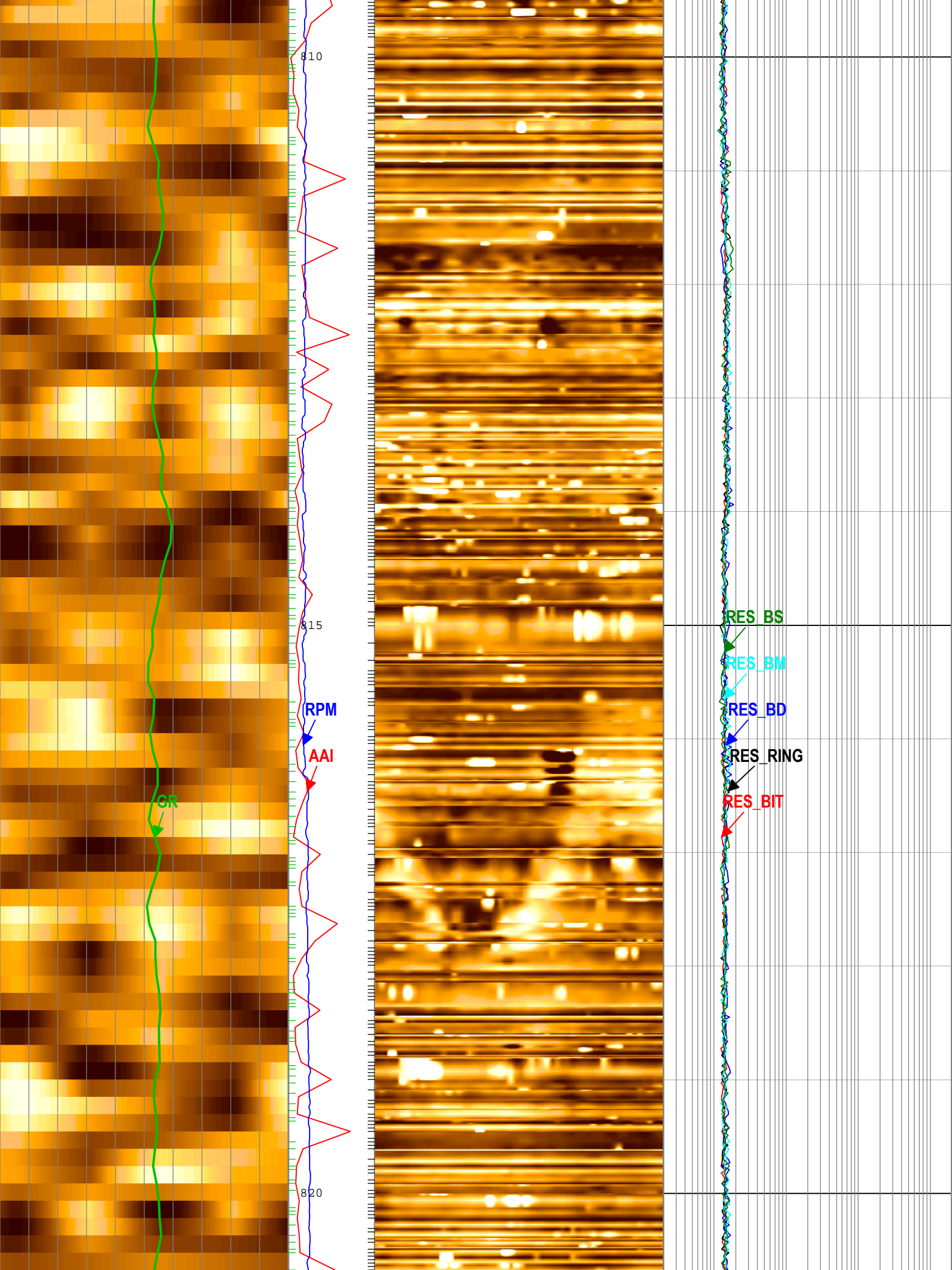
RES_RING

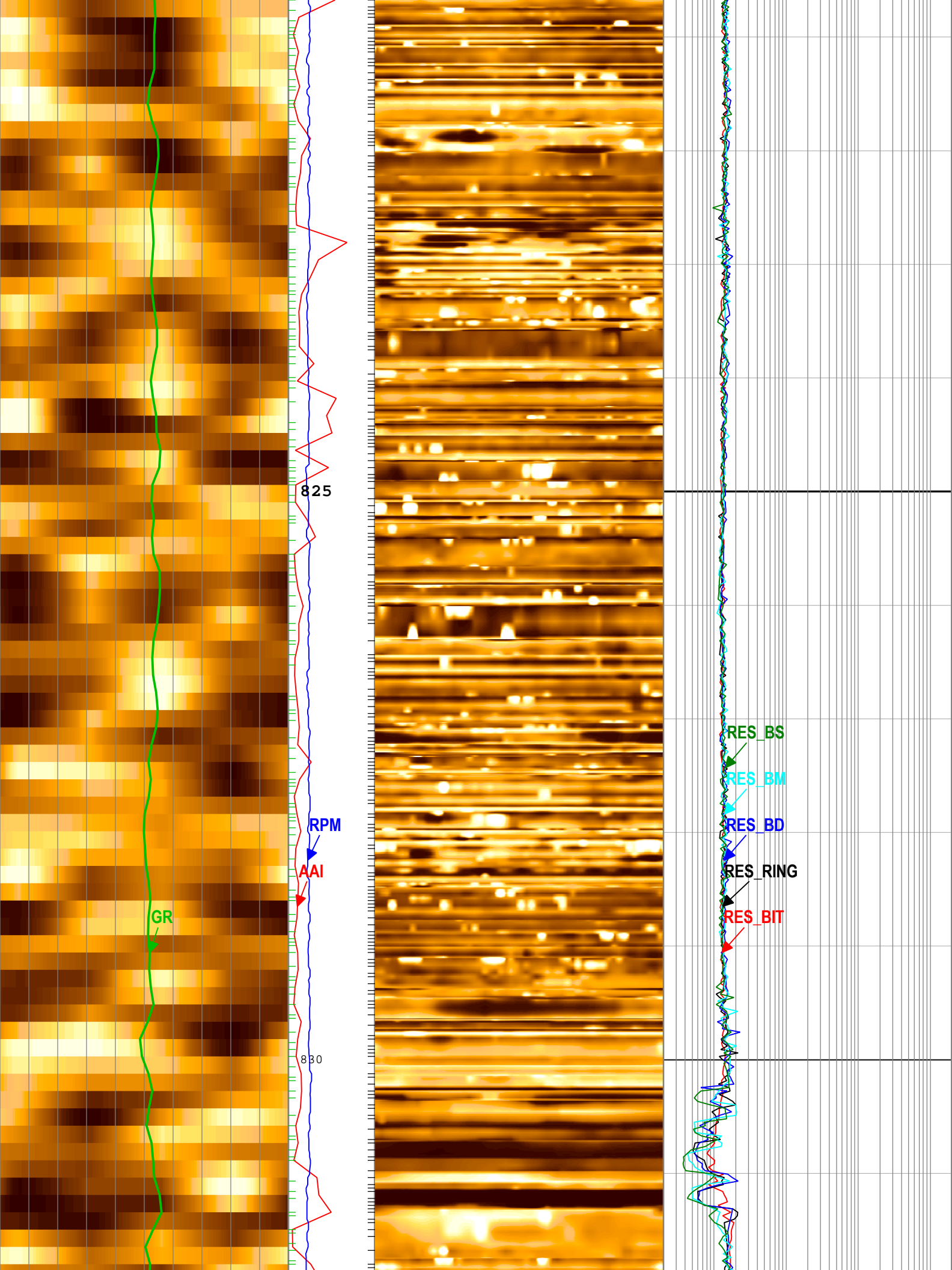
RES_BIT

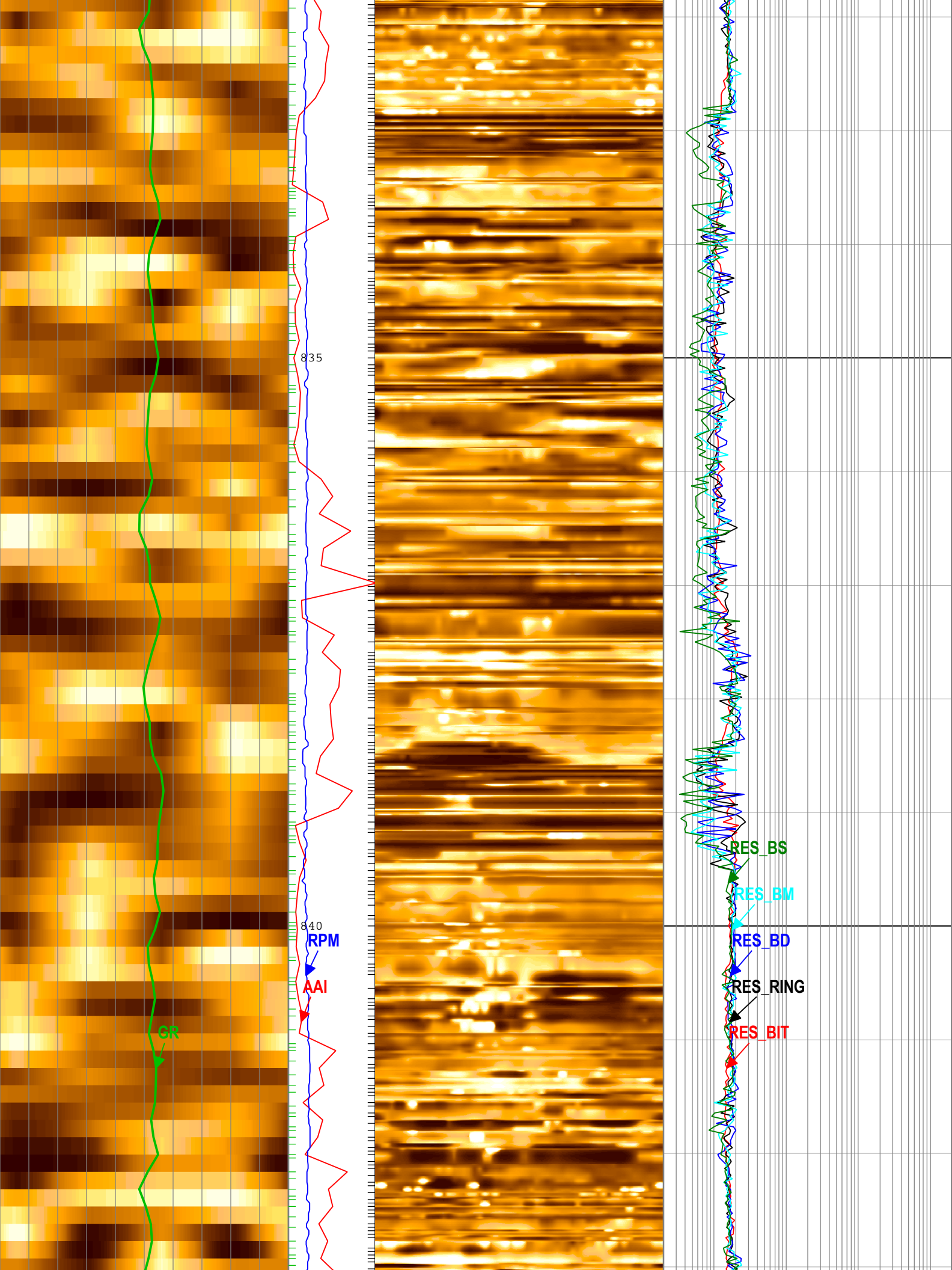


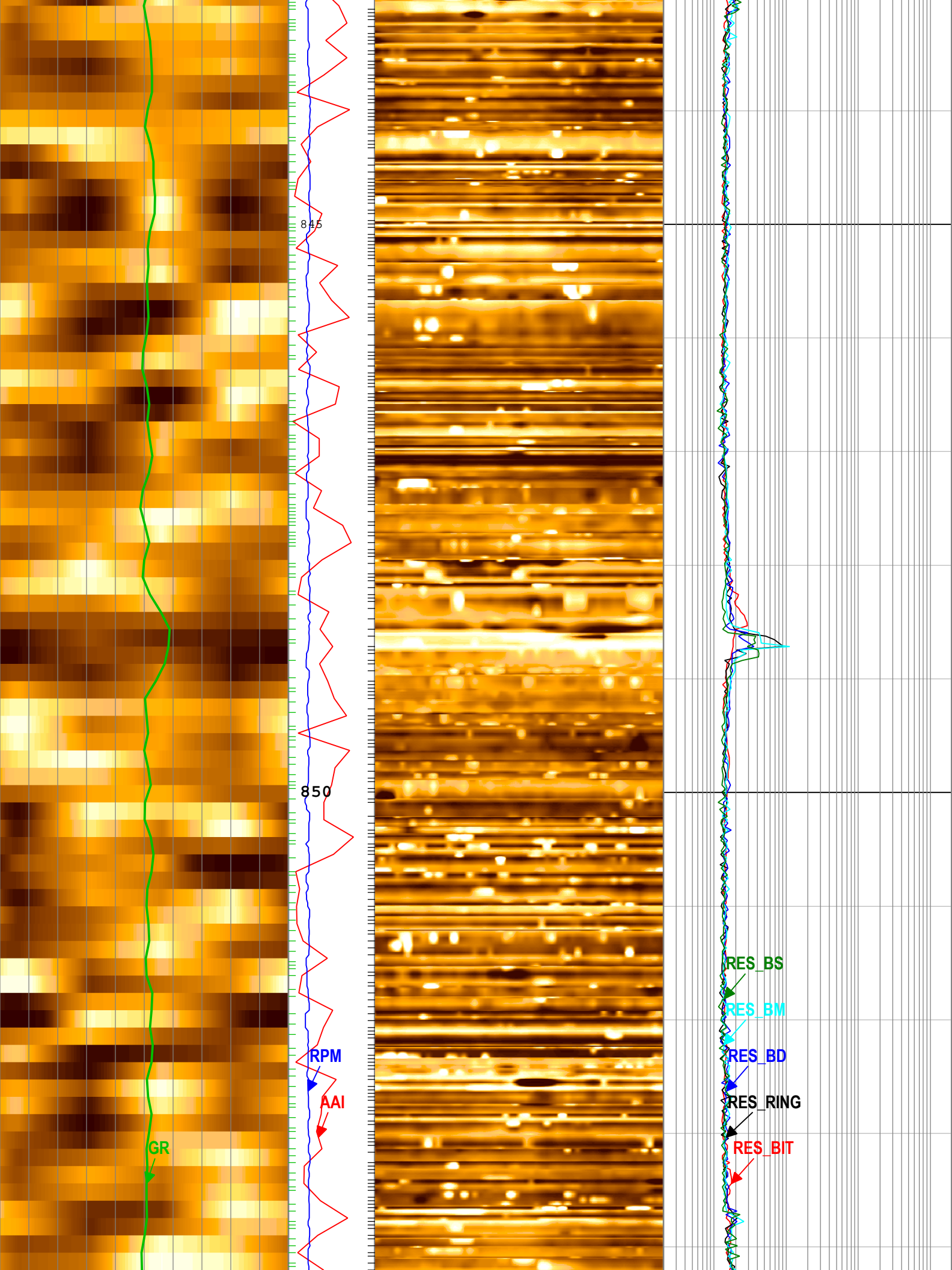












845

850

GR

RPM

AAI

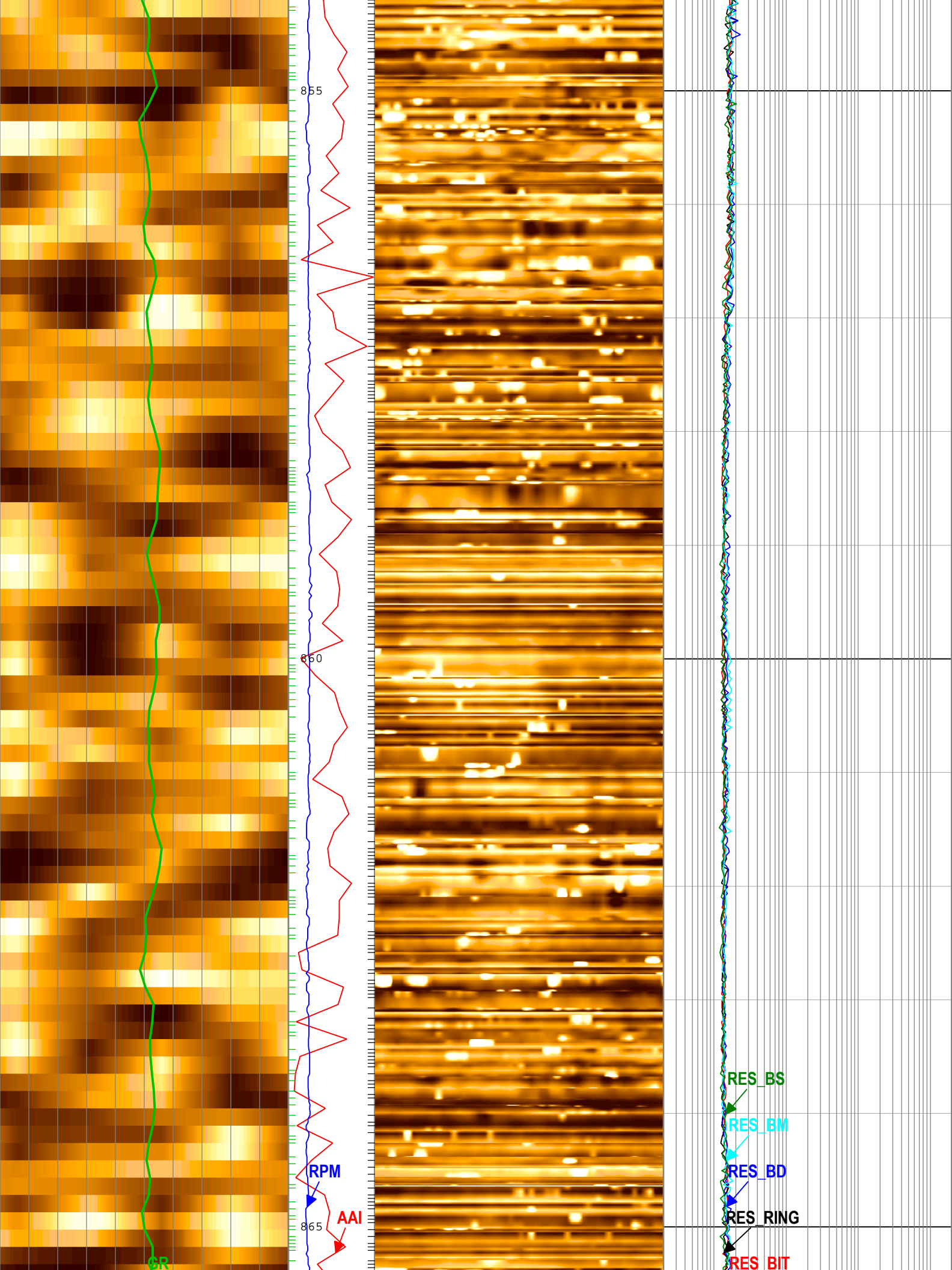
RES_BS

RES_BM

RES_BD

RES_RING

RES_BIT



855

860

865

RPM

AAI

GR

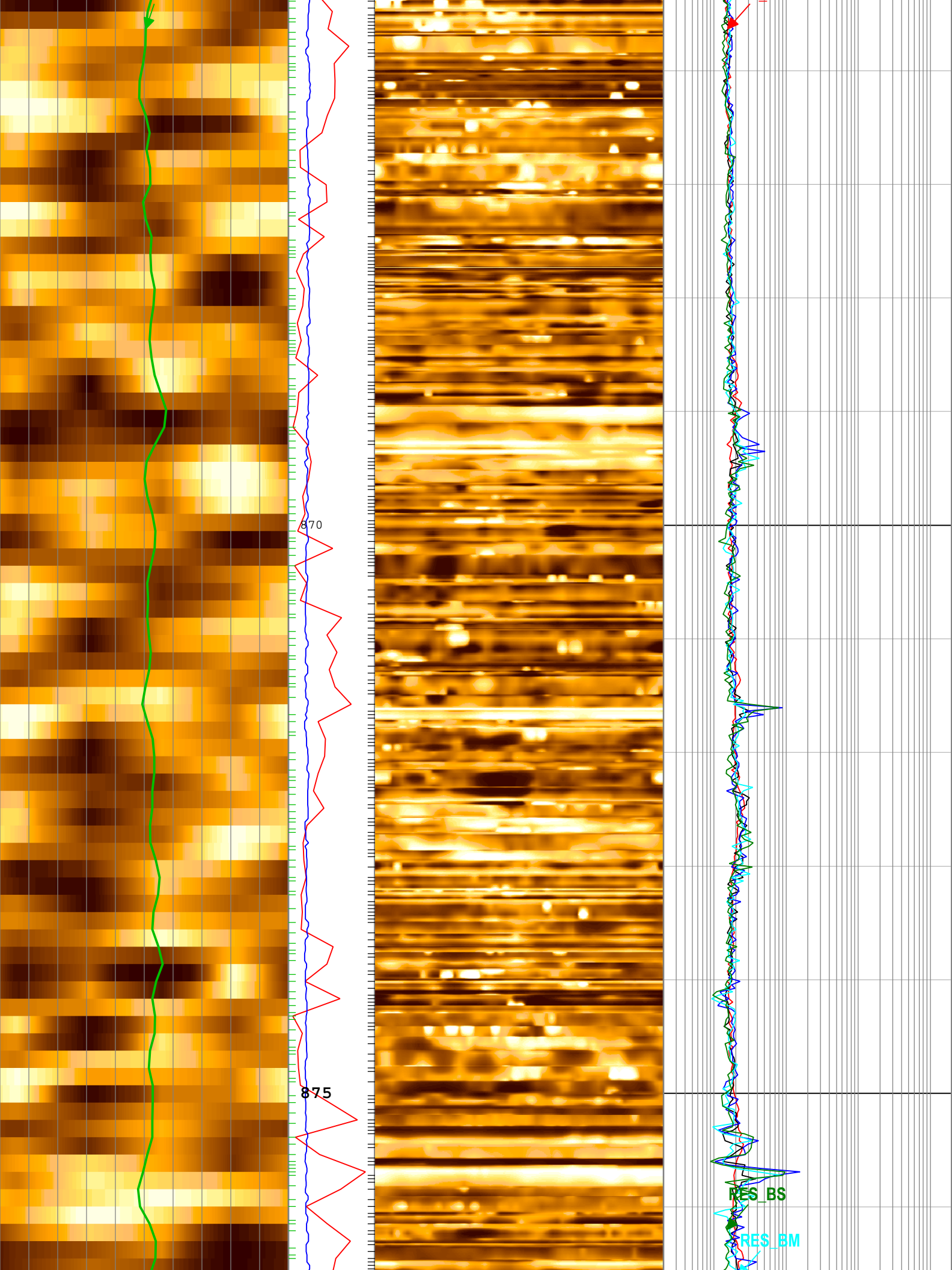
RES_BS

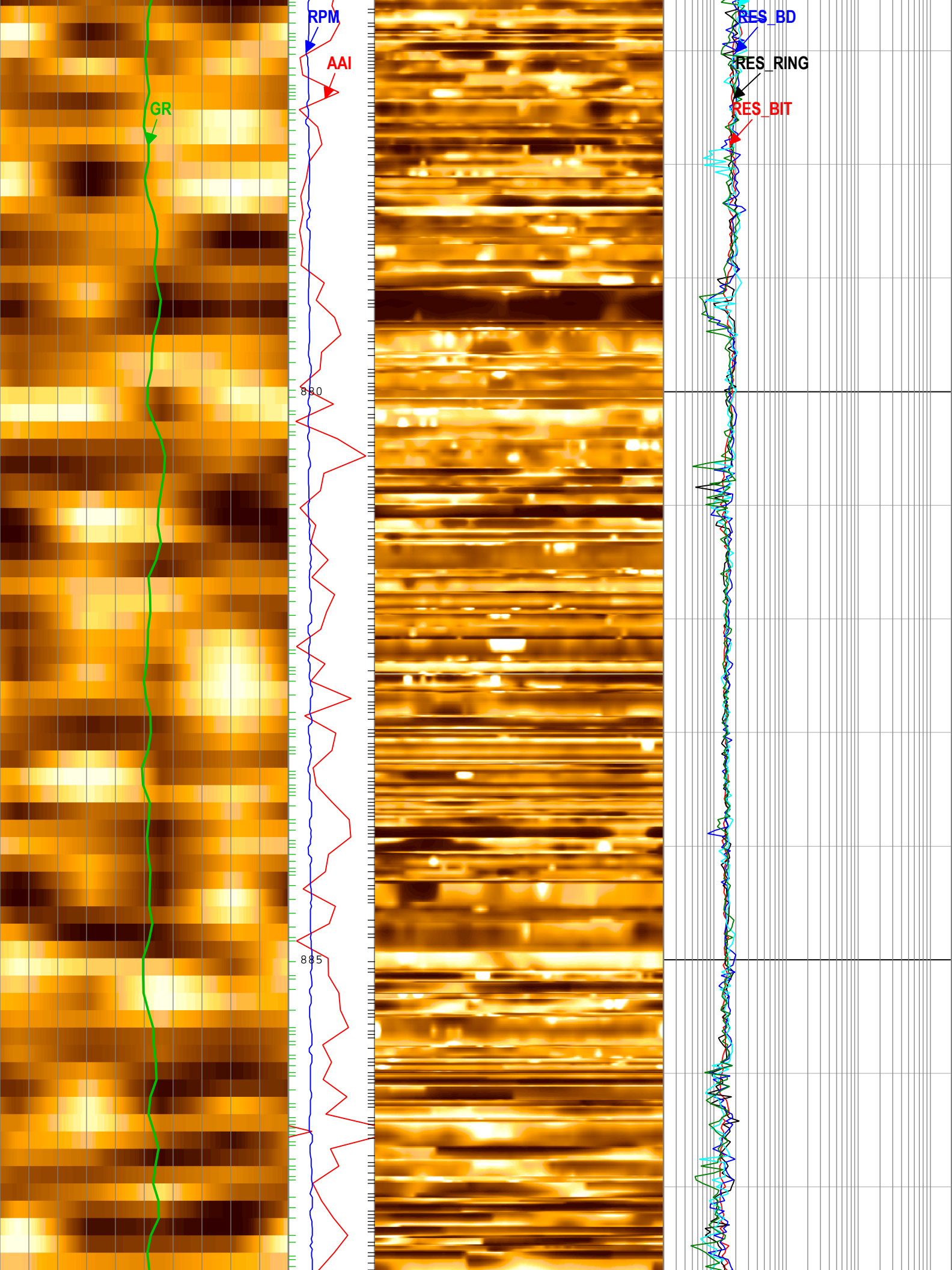
RES_BM

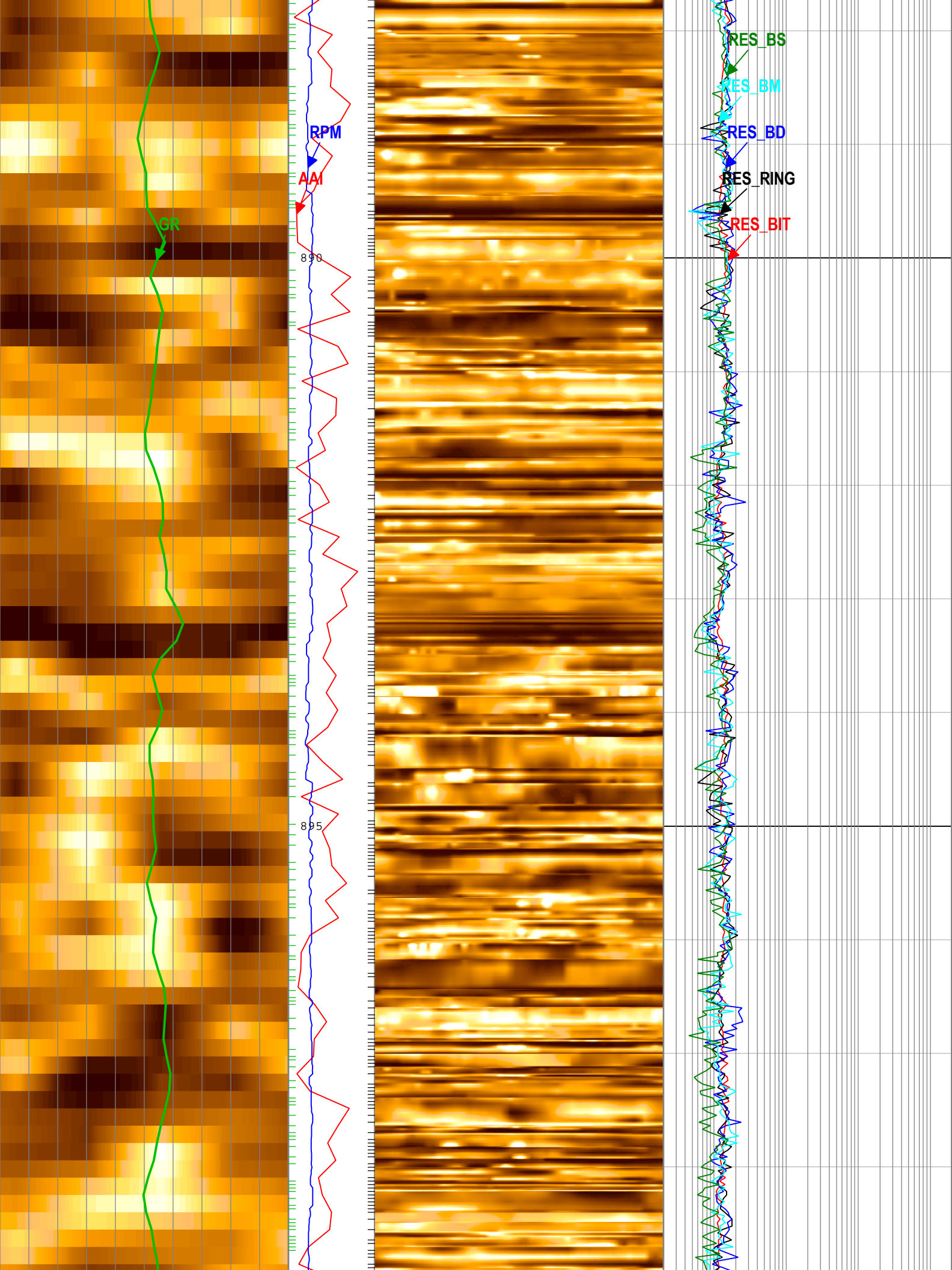
RES_BD

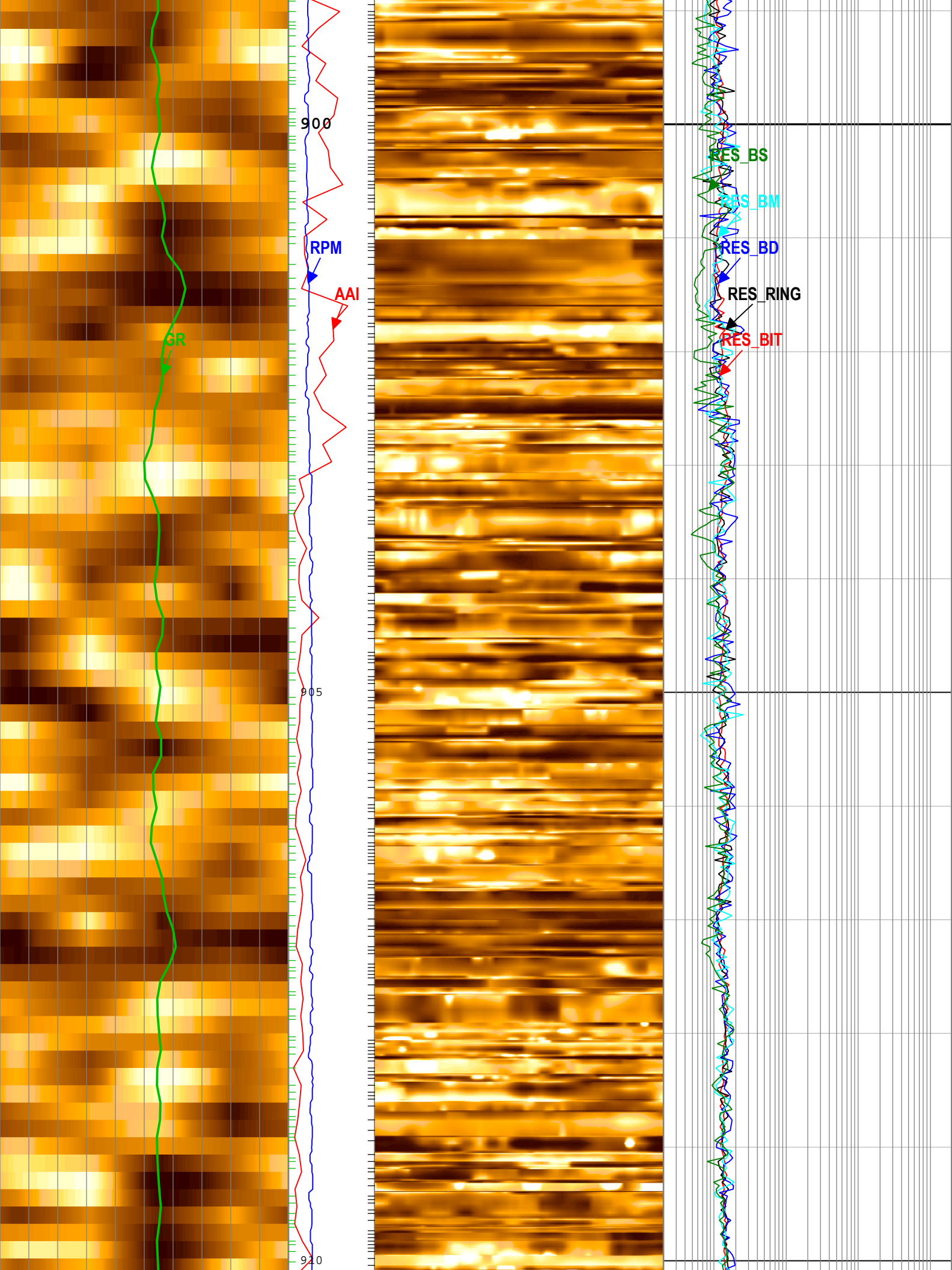
RES_RING

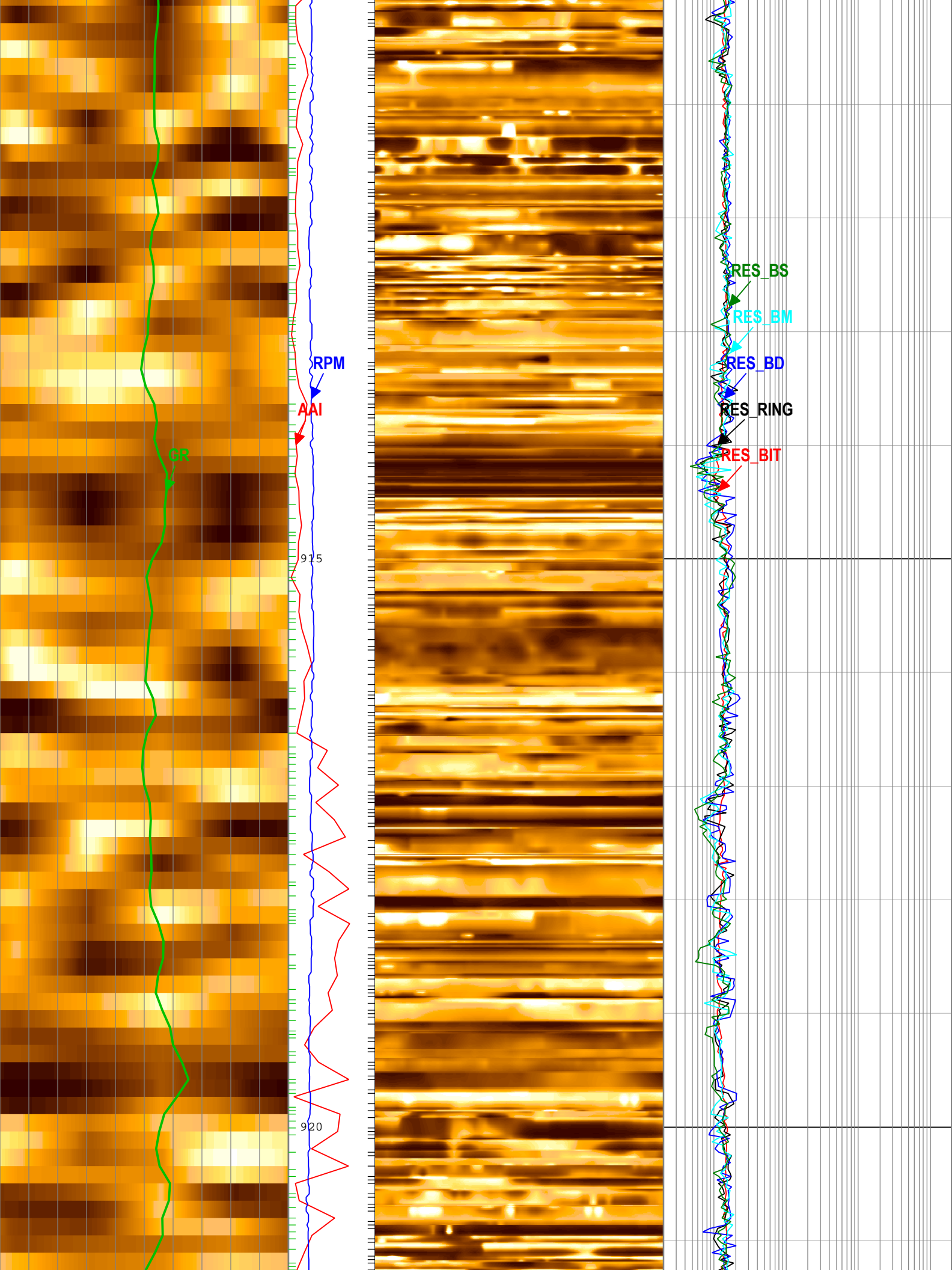
RES_BIT











CR

RPM

AAI

915

920

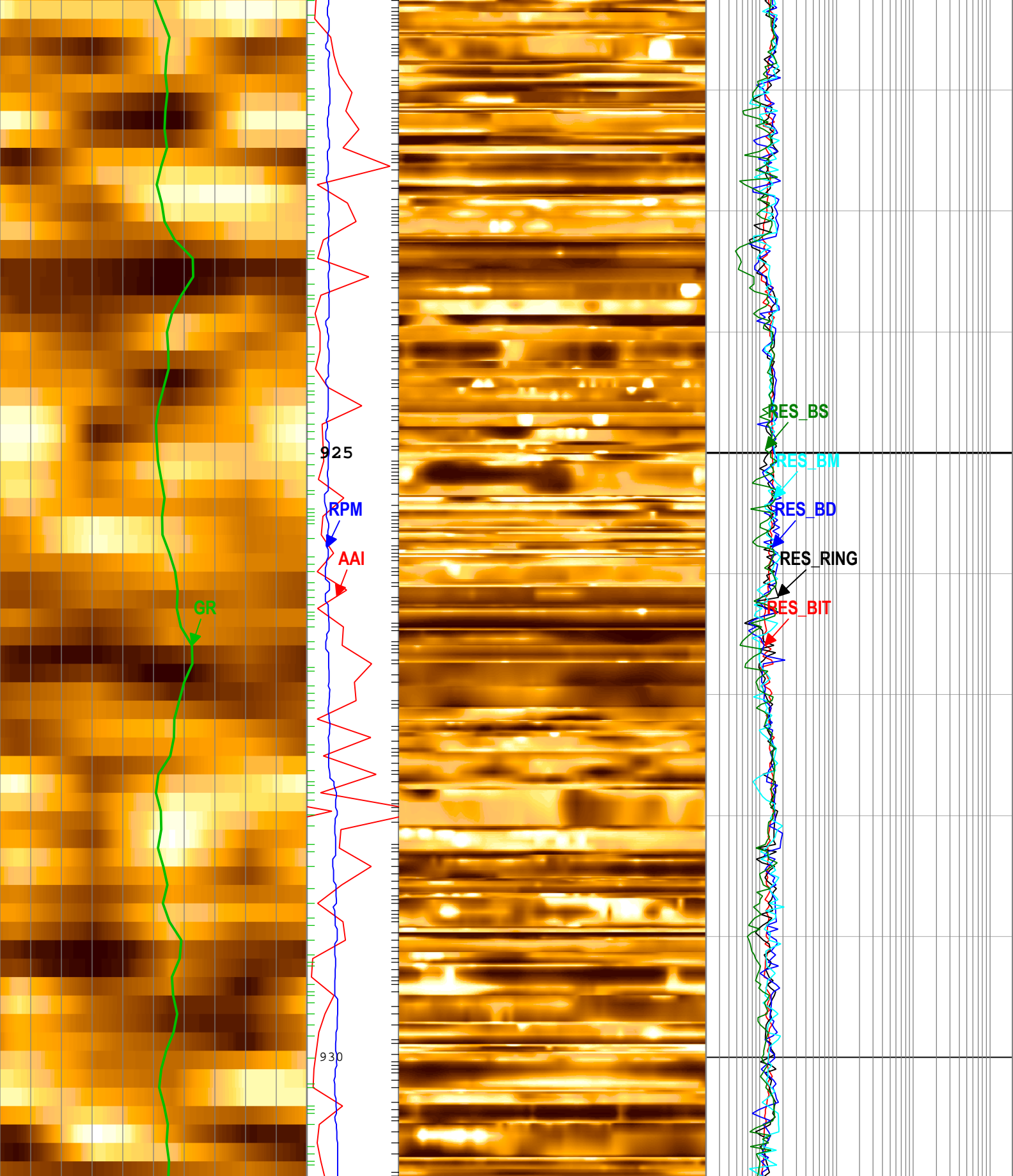
RES_BS

RES_BM

RES_BD

RES_RING

RES_BIT



Dynamic Histogram Normalization
 RAB - Gamma Ray Image RAB6 RM
 Orientation: North Azimuth

N E S W N

Gamma Ray (GR) RAB6 RM

Dynamic Histogram Normalization
 RAB - Deep Button Resistivity Image, Uphole
 RAB6 RM
 Orientation: North Azimuth

N E S W N

Bit Resistivity (RES_BIT) RAB6 RM
 0.2 ohm.m 2000

Ring Resistivity (RES_RING) RAB6 RM
 0.2 ohm.m 2000

Deep Button Resistivity (RES_BD) RAB6 RM
 0.2 ohm.m 2000

0 200

0 200

0 200

gAPI

150

Speed (RPM)
RAB6 RM
0 c/min 200

Medium Button Resistivity (RES_BM) RAB6
RM

0.2 ohm.m 2000

Shallow Button Resistivity (RES_BS) RAB6 RM

0.2 ohm.m 2000

└─TICKS_RING - Ring Sample Tick Marks RAB6 RM

└─TICKS_GR - Gamma Ray Tick Marks RAB6 RM

Description: GVR GR Image, Button Image, Resistivity Format: Log (FINAL GVR LOG 2) Index Scale: 1:40 Index Unit: m Index Type: Measured Depth

Creation Date: 29-Dec-2017 20:49:41

Channel Processing Parameters

Run 1: Parameters

Parameter	Description	Tool	Value	Unit
BHK	Drilling Fluid Potassium Concentration	Borehole	0	%
BHT	Bottom Hole Temperature	Borehole	11	degC
BS	Bit Size	DNMSESSION	8.5	in
DEPTH_SEL	Depth Selection Parameter	DNMSESSION	Driller's Depth	
DFD	Drilling Fluid Density	Borehole	1.03	g/cm3
DFT_CATEGORY	Drilling Fluid Type	Borehole	Water	
GRSE_RM	Generalized Mud Resistivity Selection for Recorded Mode	Borehole	REMS(RM)	
GTSE_RM	Generalized Temperature Selection for Recorded Mode	Borehole	DHAT(RM)	
IMG_INT_SCANS	Maximum Number of Image Scans to Interpolate Over	RAB6	1	
IMG_UPSAMPLE	Upsample Resistivity Images to 224 Bins	RAB6	Yes	
MST	Mud Sample Temperature	Borehole	23.89	degC
RMS	Resistivity of Mud Sample	Borehole	0.2	ohm.m
TEMP_SEL_RAB	RAB Temperature Selection	RAB6	Tool	

Tool Control Parameters

Run 1: Parameters

Parameter	Description	Tool	Value	Unit
OFFBTM_TH	Threshold for deciding whether the bit is off bottom	DNMSESSION	Time Zoned	m

Time Zone Parameters

Parameter	Value	Start Time	Stop Time	Start Depth (m)	Stop Depth (m)
OFFBTM_TH	0	15-Dec-2017 21:33:10	16-Dec-2017 17:05:02	682.5	870.03
OFFBTM_TH	0.3	16-Dec-2017 17:05:02	17-Dec-2017 09:34:16	870.03	940.92

All depth are at tool zero.

Company: IODP
Well: U1517A
Field: TLC-04B
Rig Name: Joides Resolution
Expedition: 372
Country: New Zealand



geoVISION Image Service
1:40 Measured Depth
Recorded Mode Data