

# RAB6 (GVR6) Resistivity Processed Images

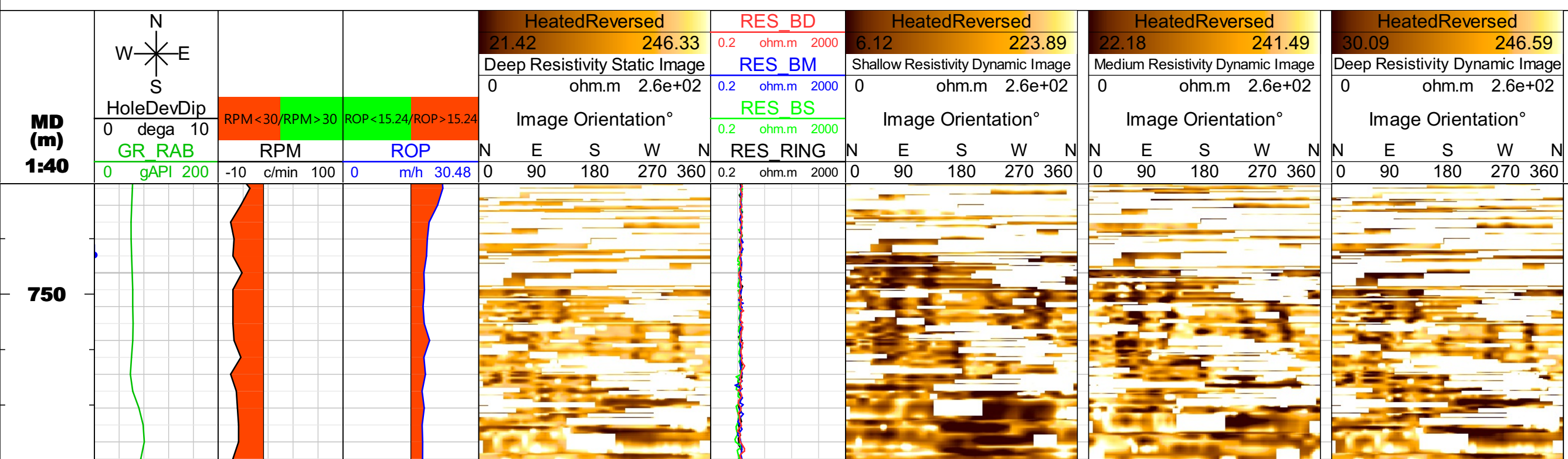
## Processed Static & Dynamic Images (Shallow, Medium & Deep) Interval: 749 - 940 m MD, Scale: 1:40

COMPANY: IODP  
 WELL: TLC-04B  
 FIELD:  
 STATE:  
 COUNTRY:  
 Date Logged: 17-Dec-2017  
 Date Processed: 22-Dec-2017  
 Run no. 1  
 Depth Driller (m): 940.92  
 Depth Logger (m): 940.92  
 Elevations (m): K.B: 0.00 D.F: 11.00 G.L: -720.00  
 Permanent Datum: MSL  
 Log Measured From: DF 11.00 m above Permanent Datum

Using the following logs: RAB6-CB, MP6-B, DVM-675, MWD\_10, MRT6-BA

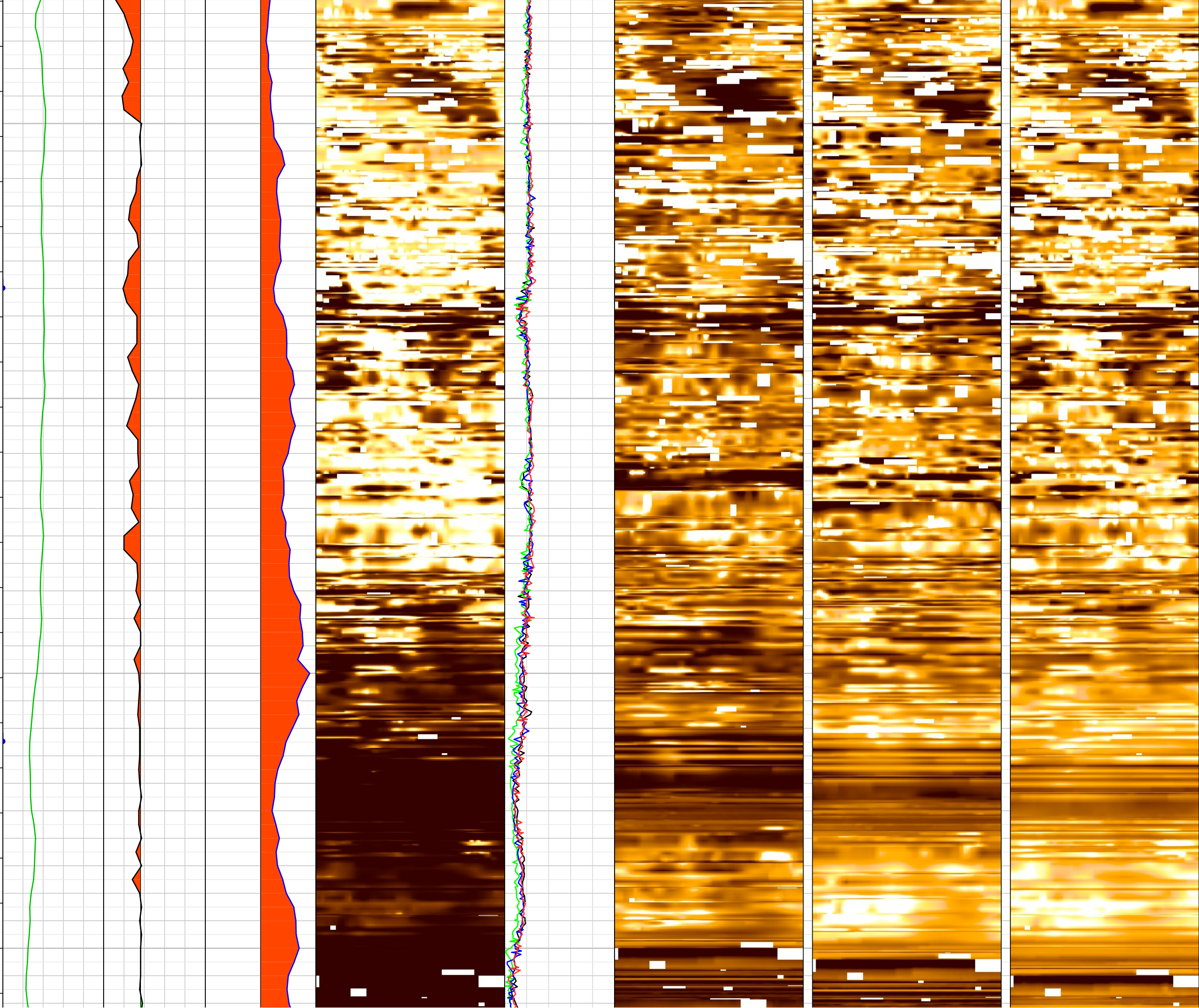
| Field Recording:                                     |                                     |                               |
|--|-------------------------------------|-------------------------------|
| Location:  | Software version: Maxwell 7.3.92069 | Engineer:                     |
| Office Recording:                                    |                                     |                               |
| Location: DS HUB                                     | Software version: Techlog 2015.3    | Geologist: Himanshu Manchanda |
| Mud and Borehole Measurements:                       |                                     |                               |
| Rm @ Measured Temperature: 0.200 ohm.m @ 23.889 degC | BHT: 11 degC                        | Bitsize: 8.5 in               |
| Rmf @ Measured Temperature: 0.15 ohm.m @ 20.00 degC  | Fluid in Hole: Sea Water            | Mud Density: 1.031 (g/cm3)    |
| Rmc @ Measured Temperature: @20degC                  | Mud pH:                             | Fluid Loss:                   |

**Remarks:** Any interpretation, research, analysis, data, results, estimates, or recommendation furnished with the services or otherwise communicated by Schlumberger to the customer at any time in connection with the services are opinions based on inferences from measurements, empirical relationships, and/or assumptions; which, inferences, empirical relationships and/or assumptions are not infallible and with respect to which professionals in the industry may differ. Accordingly, Schlumberger cannot and does not warrant the accuracy, correctness, or completeness of any such interpretation, research, analysis, data, results, estimates, or recommendation. The customer acknowledges that it is accepting the services "as is," that Schlumberger makes no representation or warranty, express or implied, of any kind or description in respect thereto, and that such services are delivered with the explicit understanding and agreement that any action taken based on the services received shall be at its own risk and responsibility, and no claim shall be made against Schlumberger as a consequence thereof.



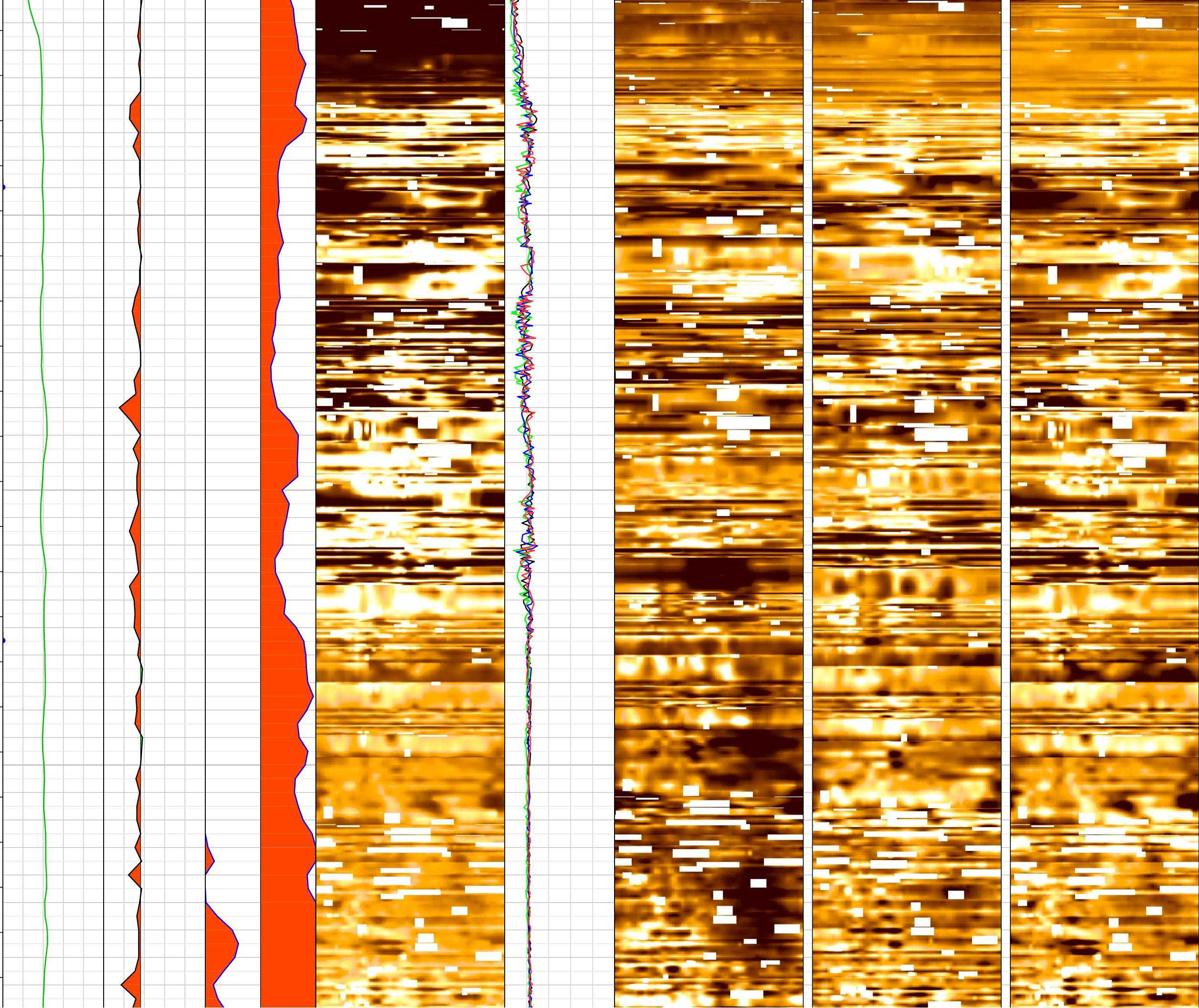
755

760



765

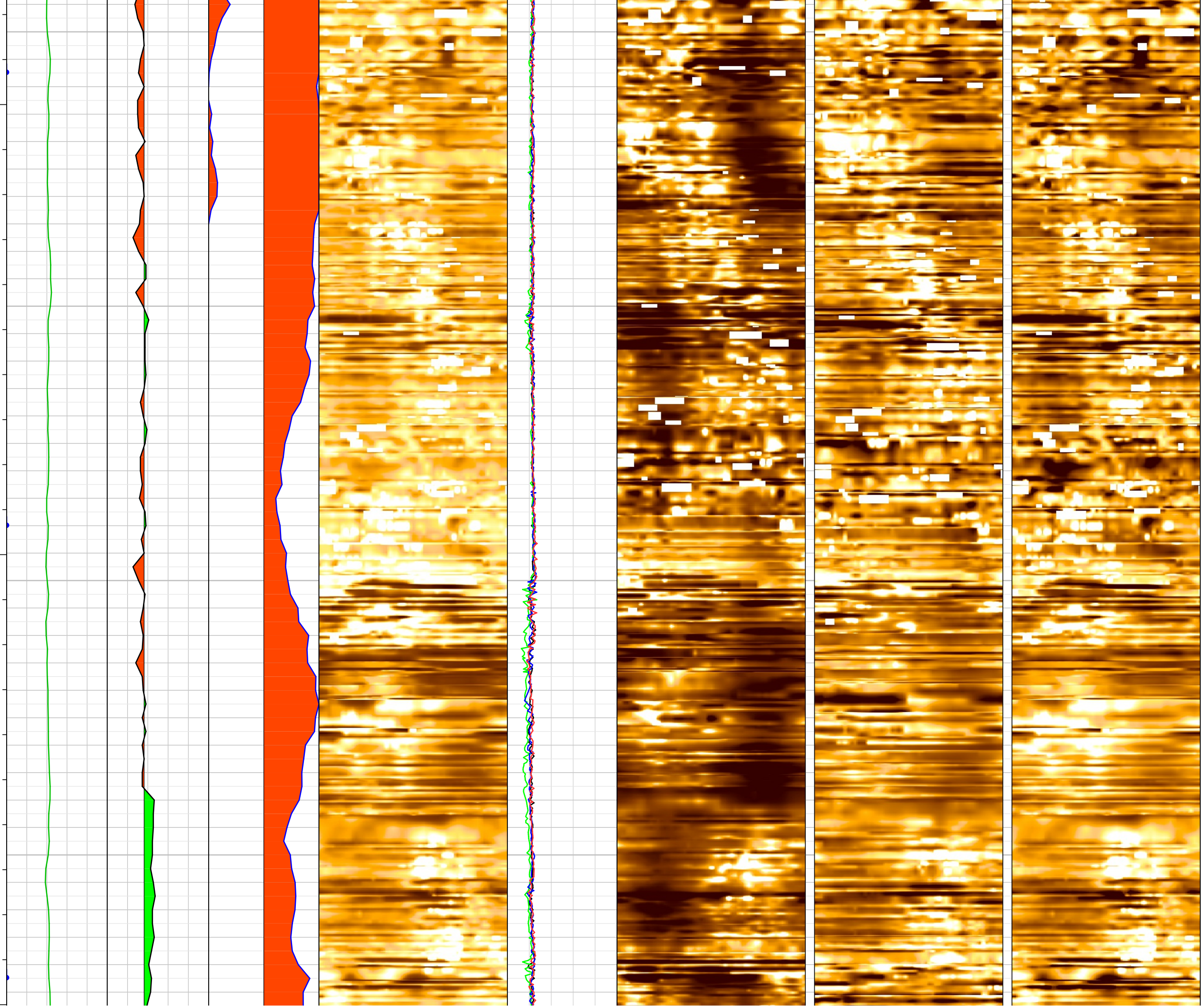
770

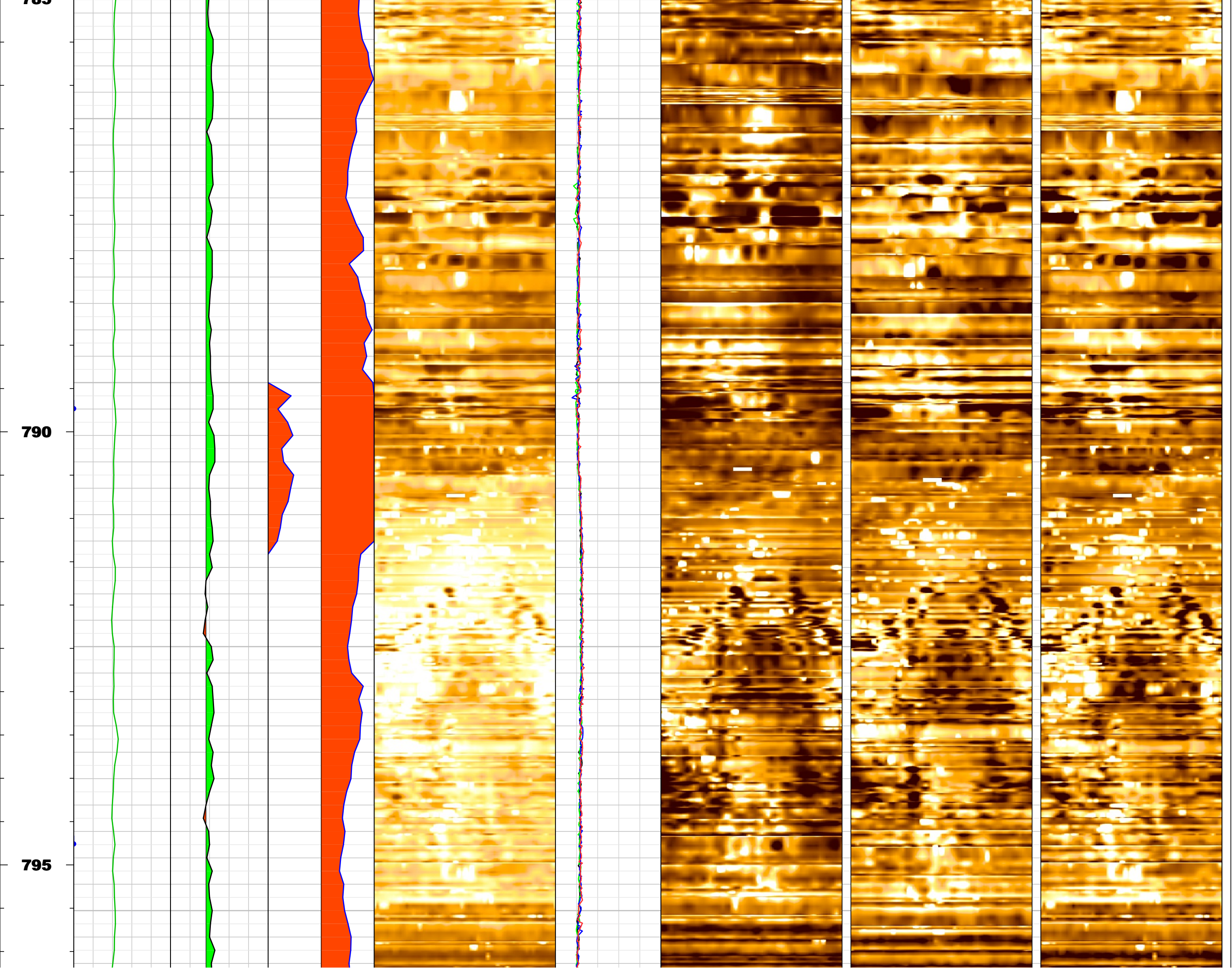


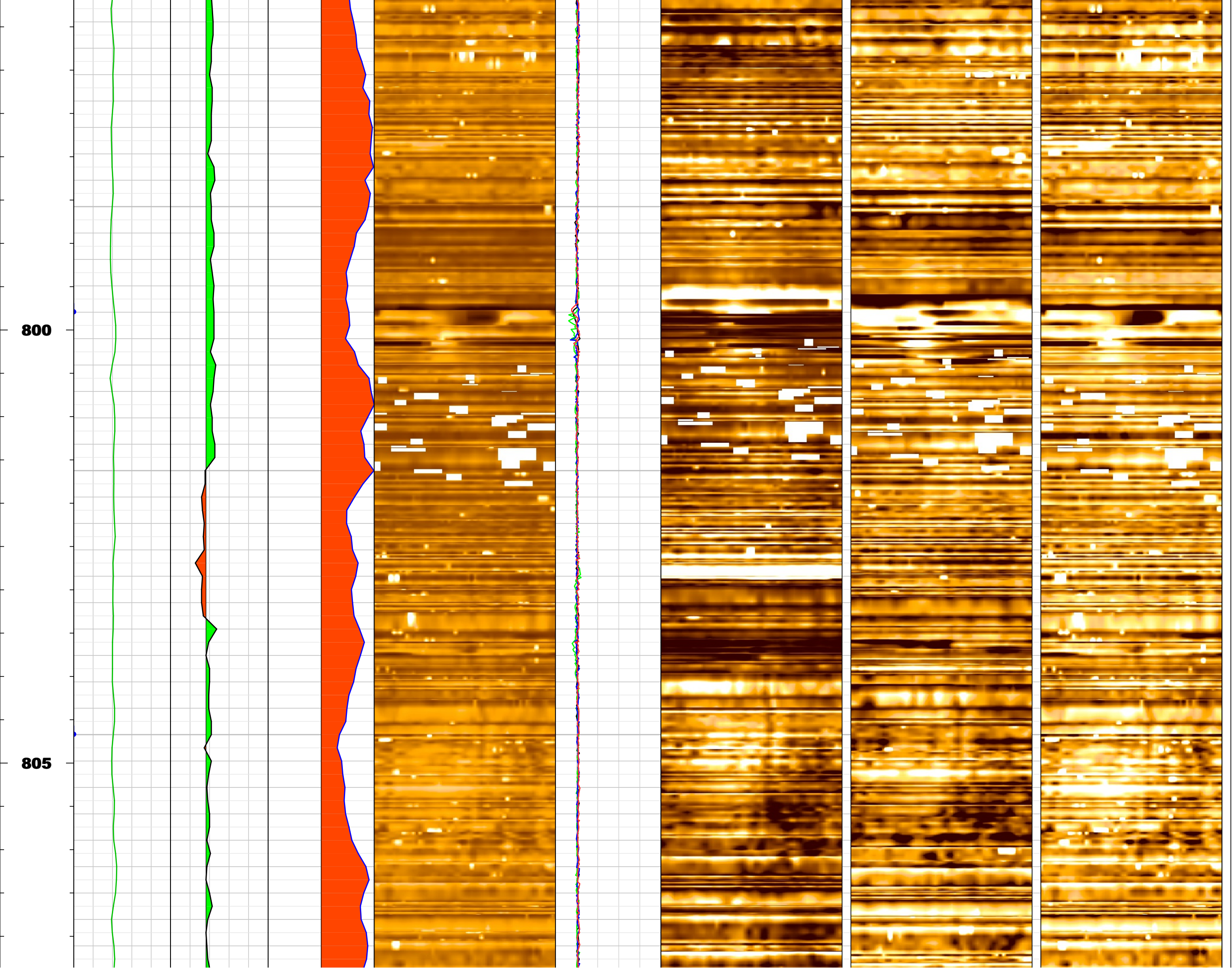
775

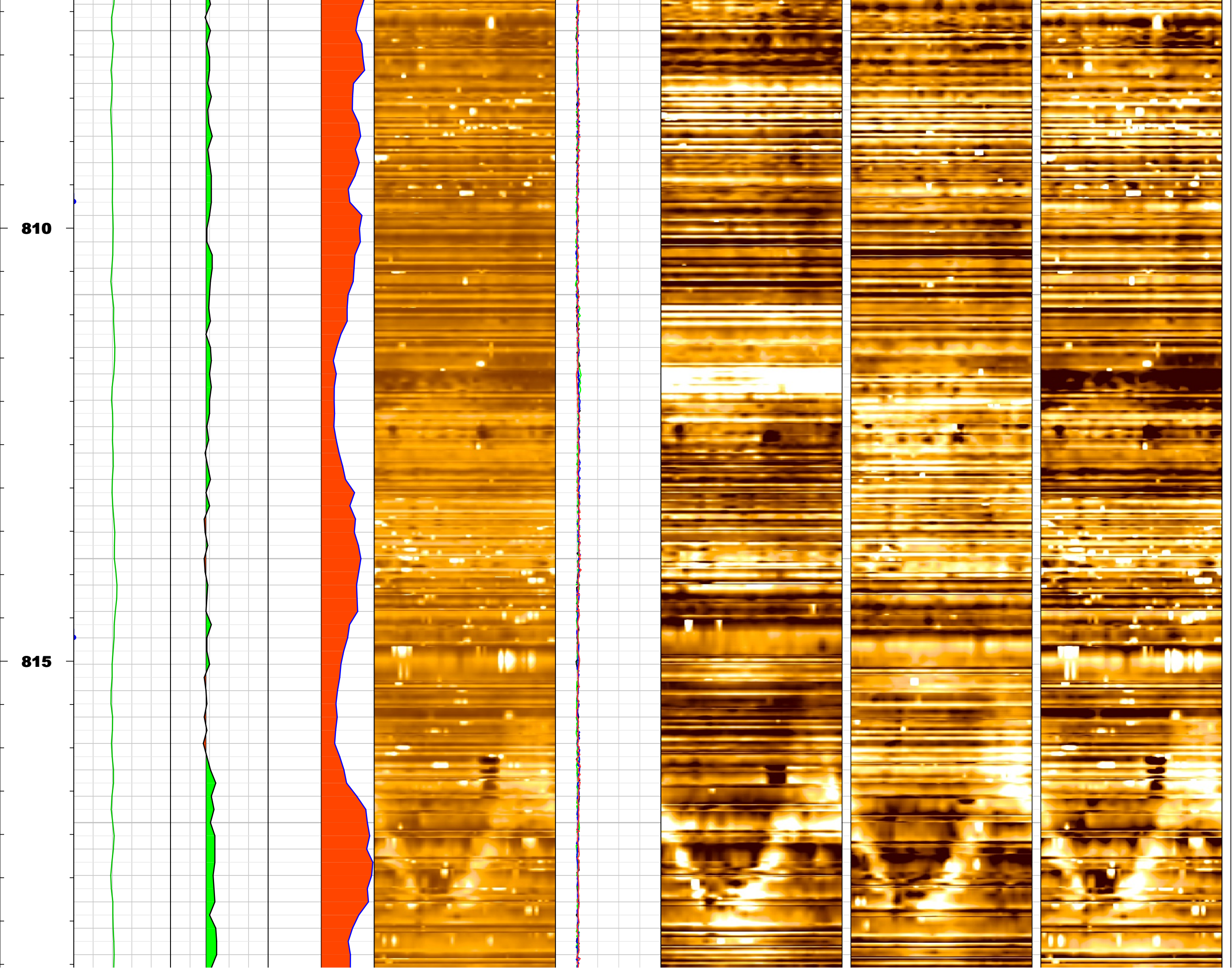
780

785



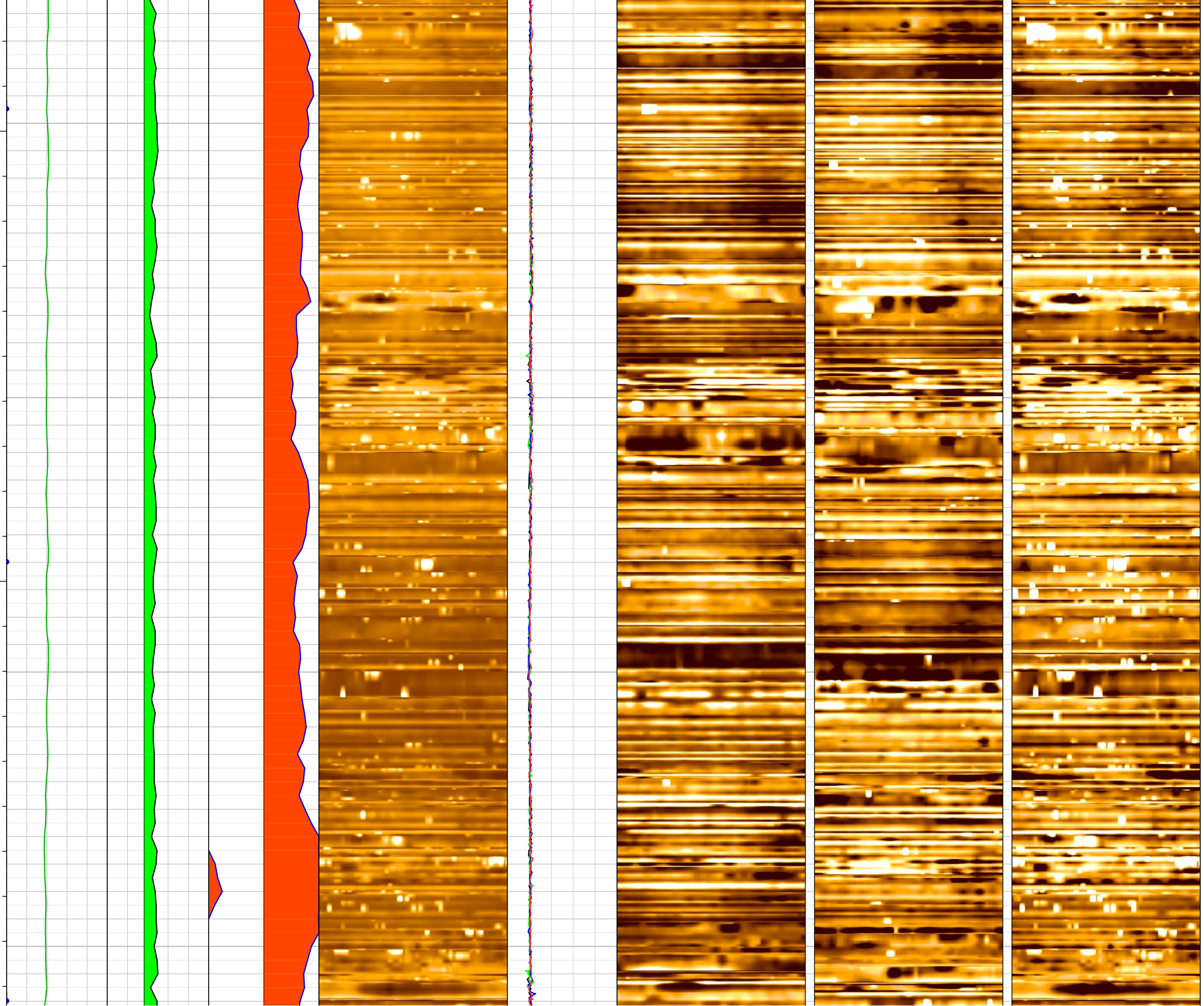






820

825

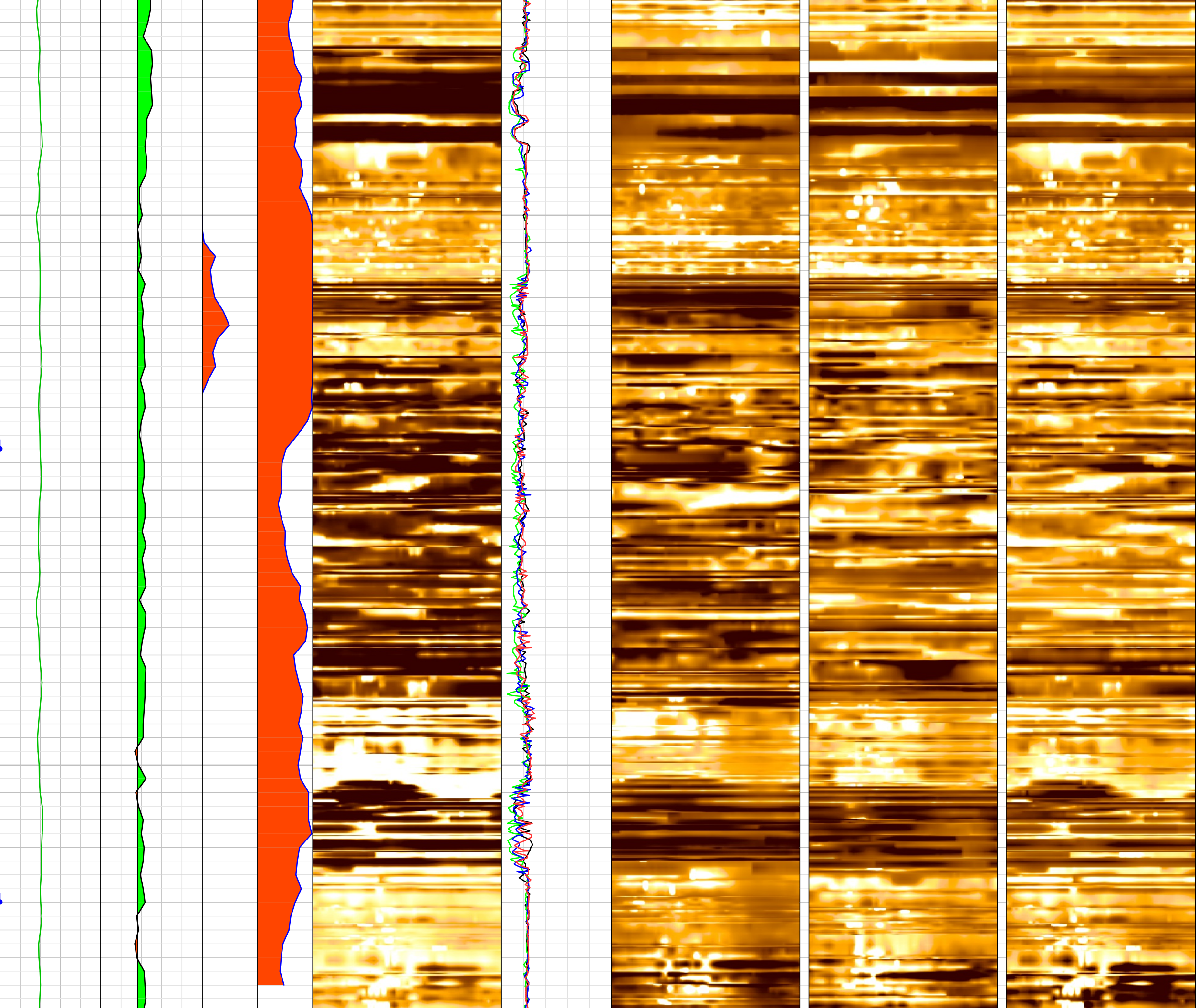




830

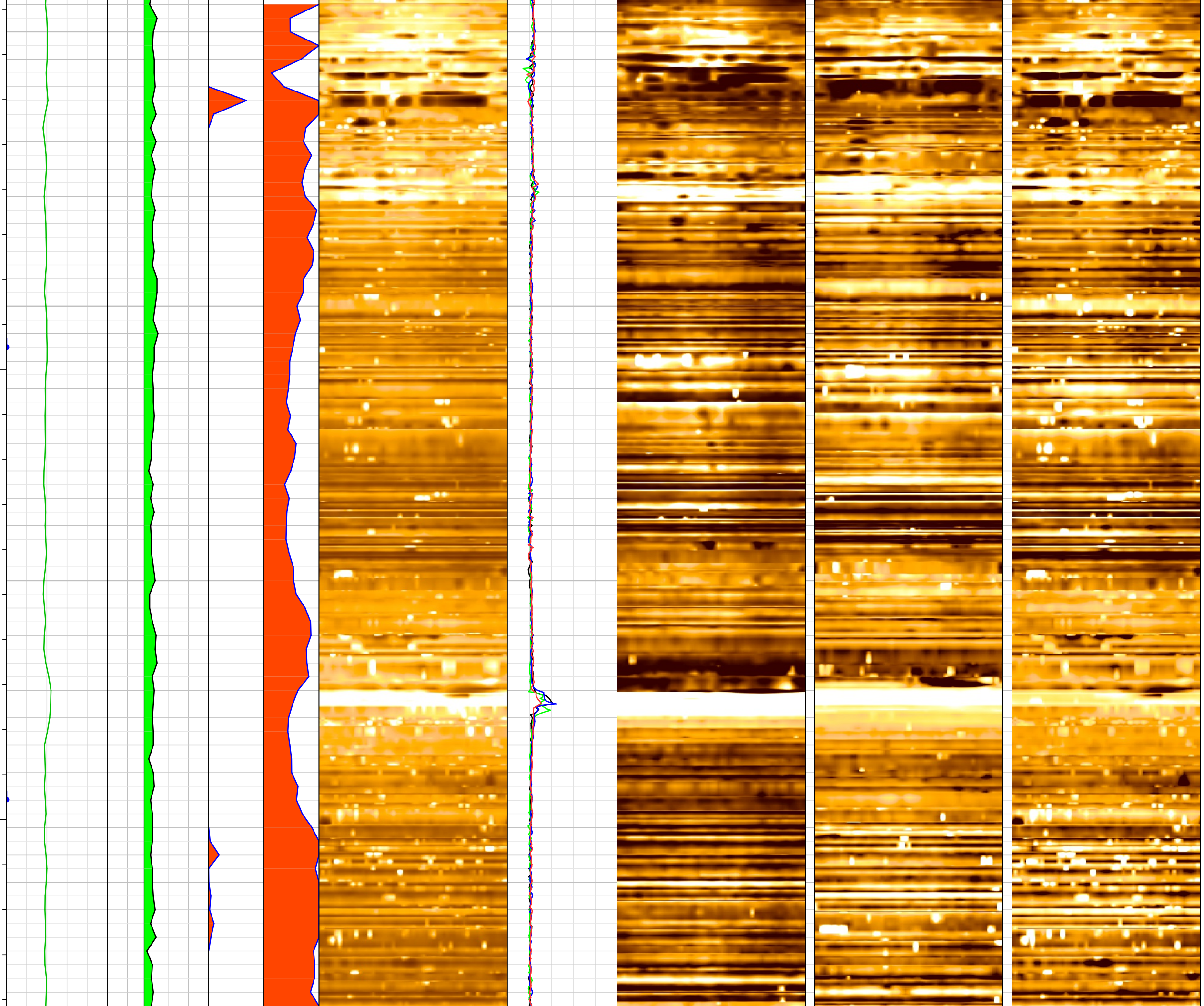
835

840



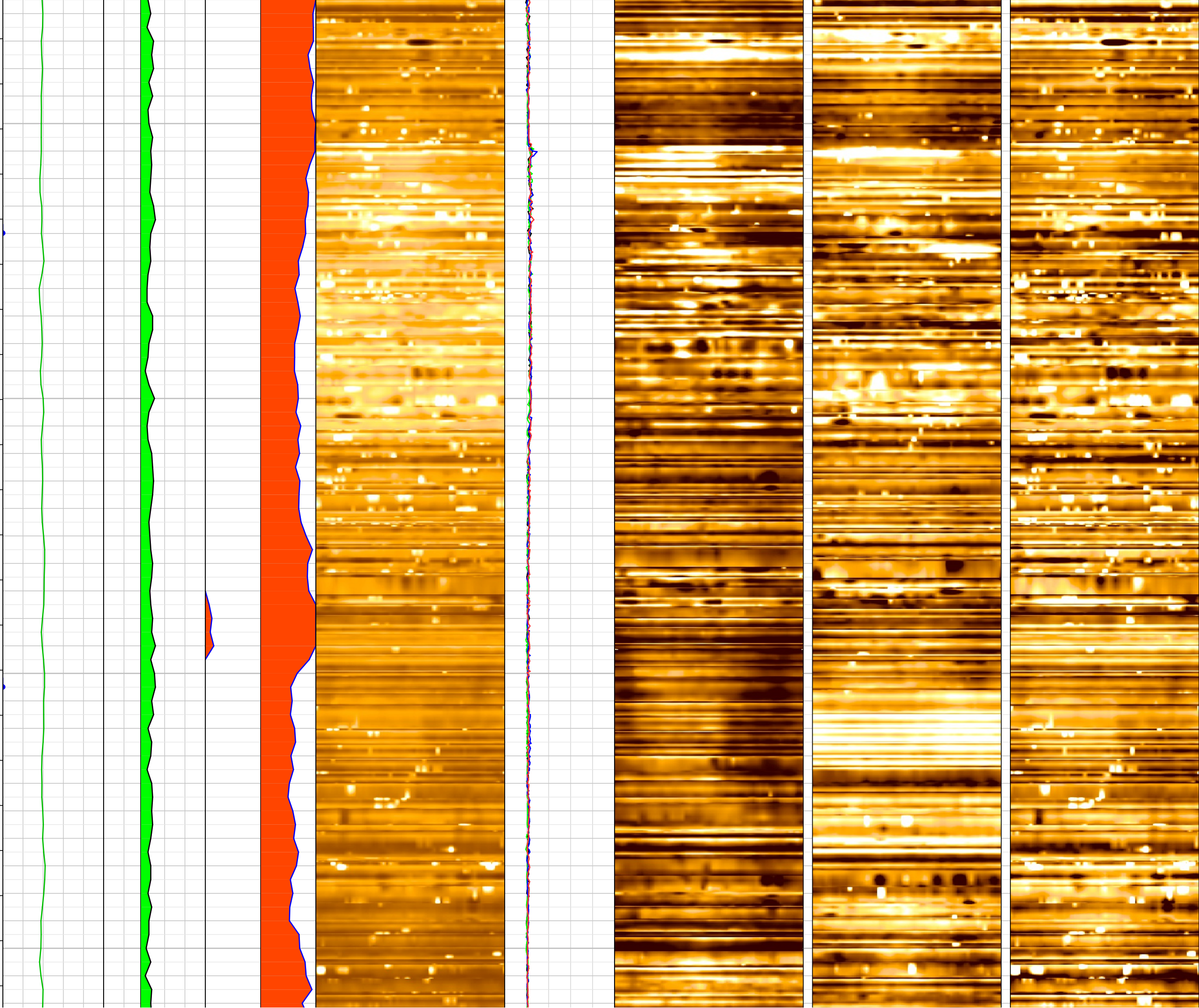
845

850



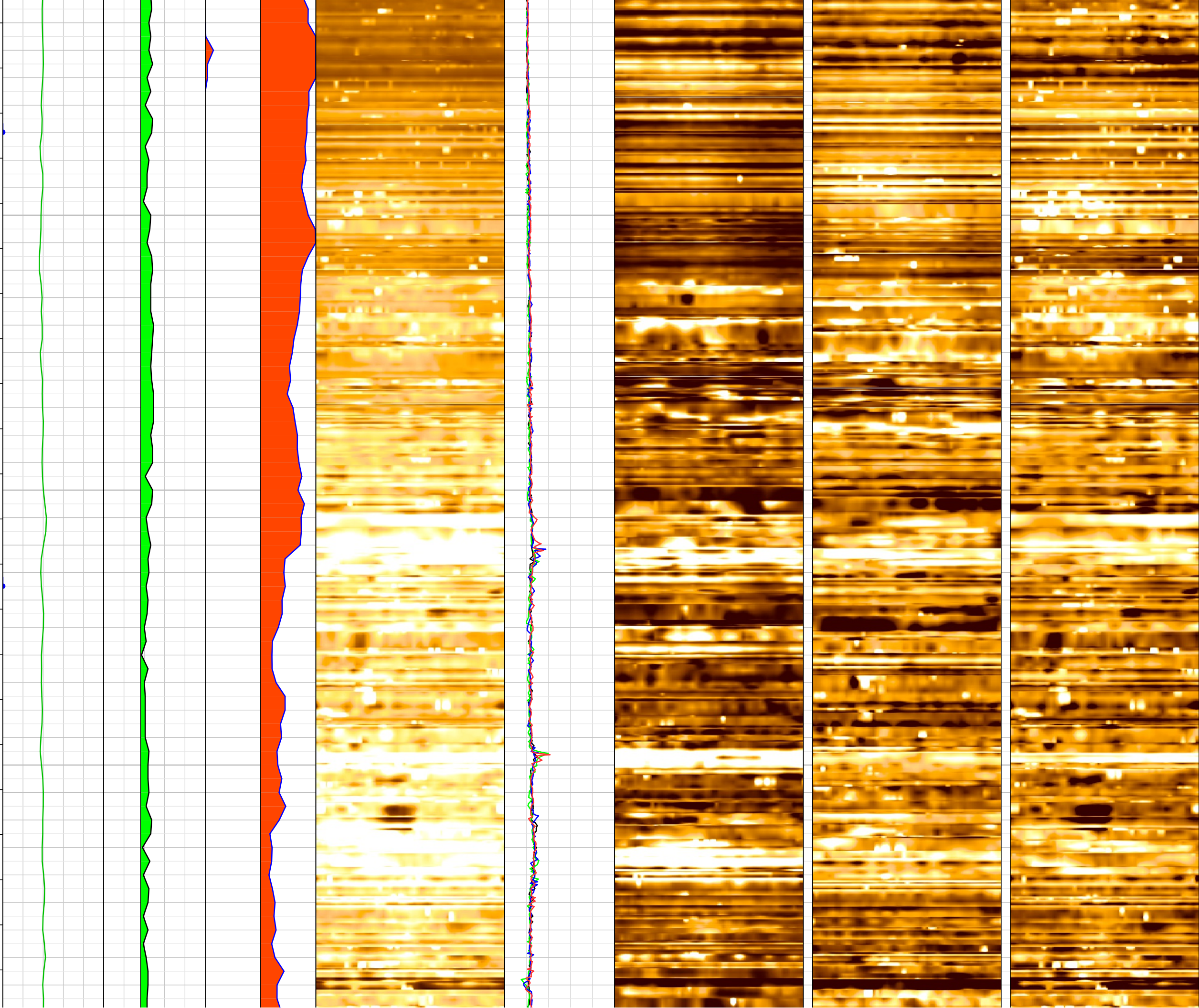
855

860



865

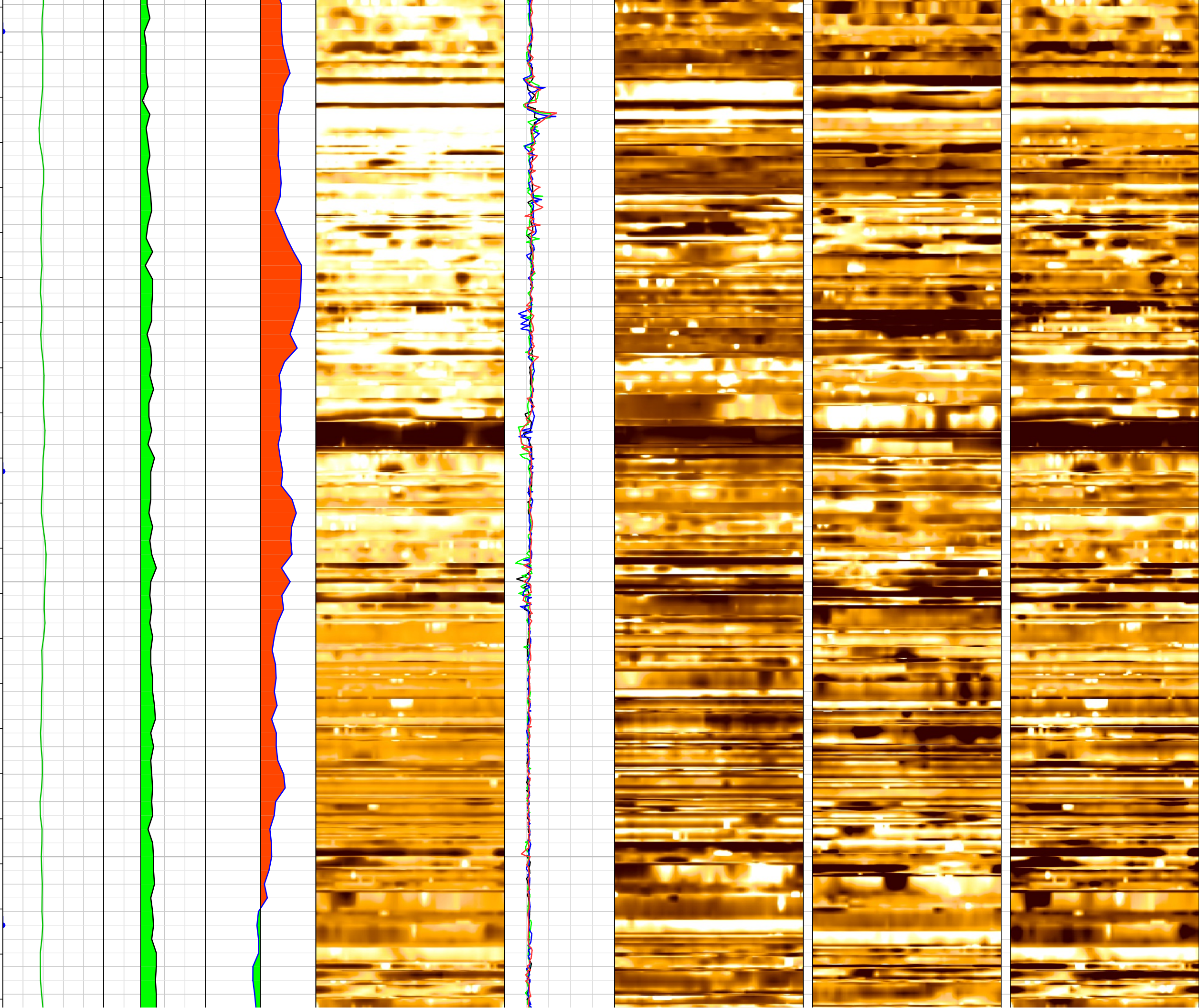
870



875

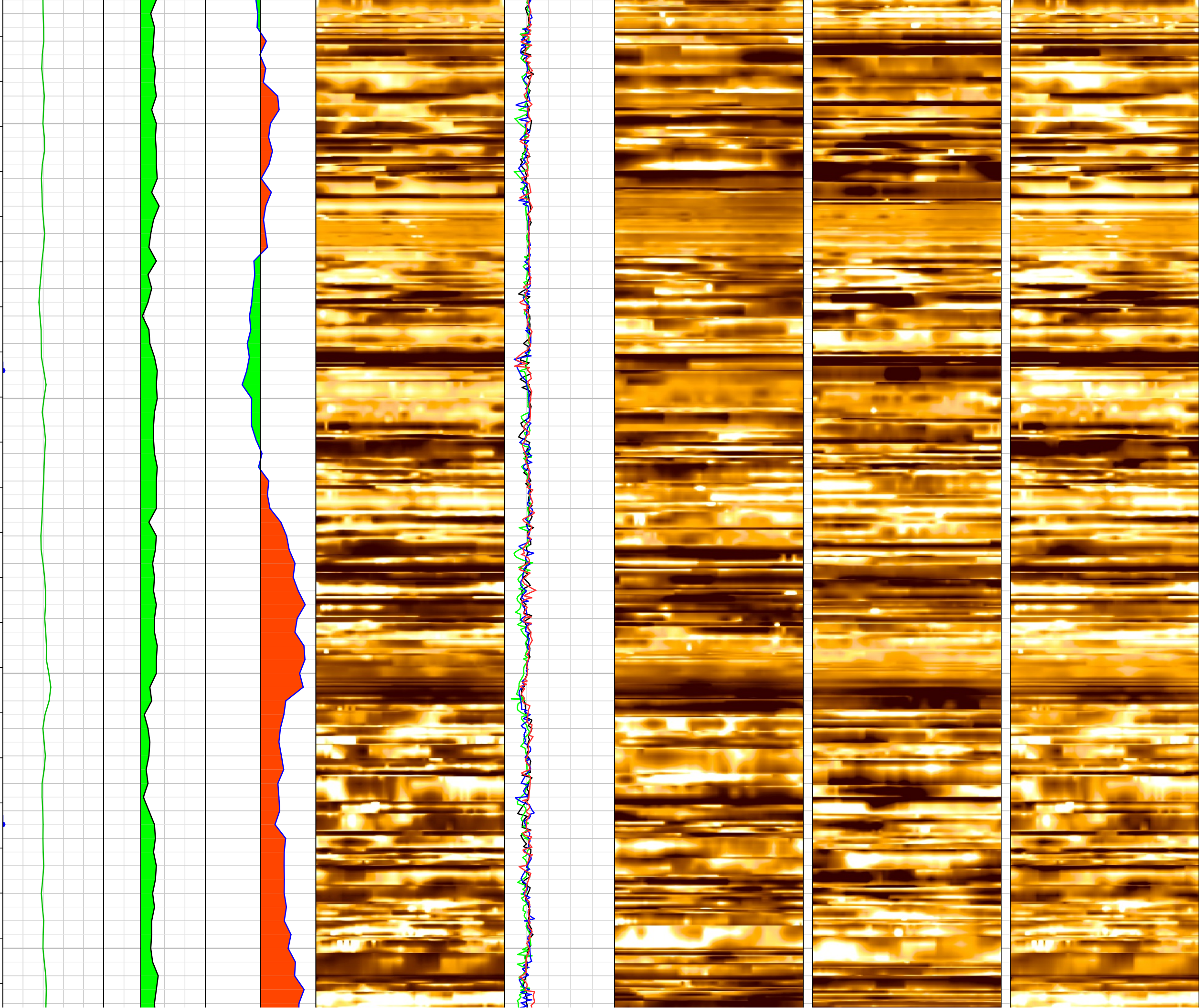
880

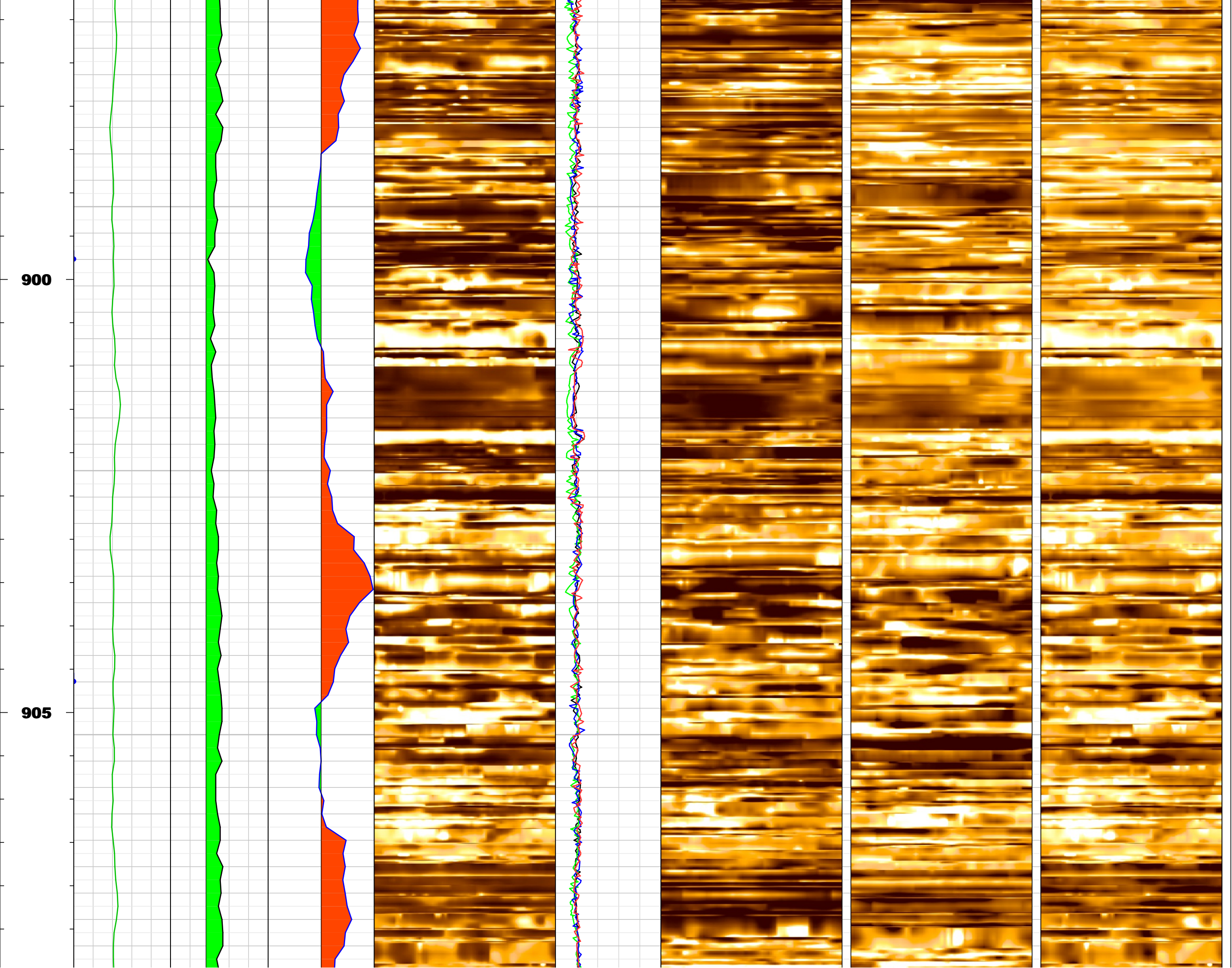
885

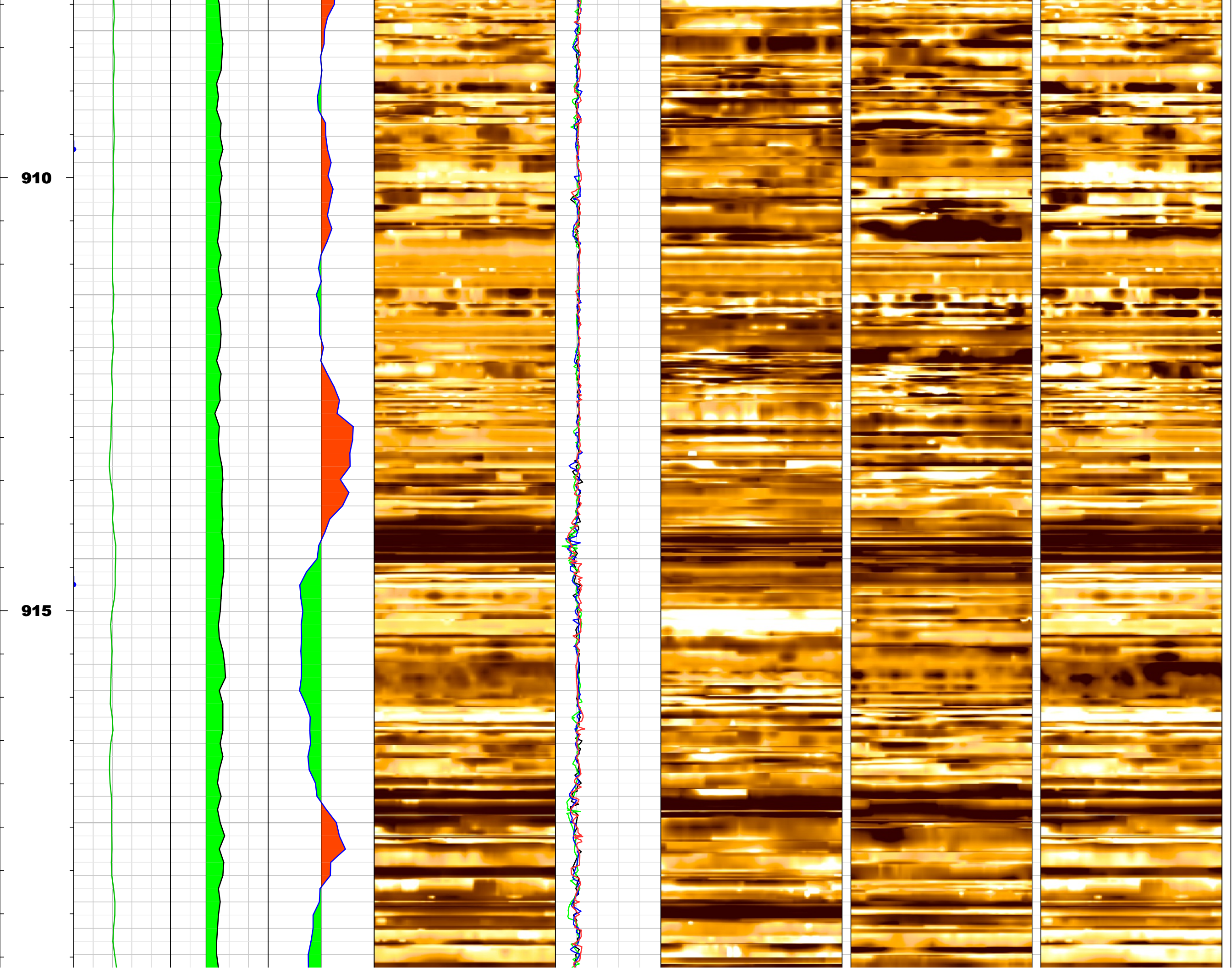


890

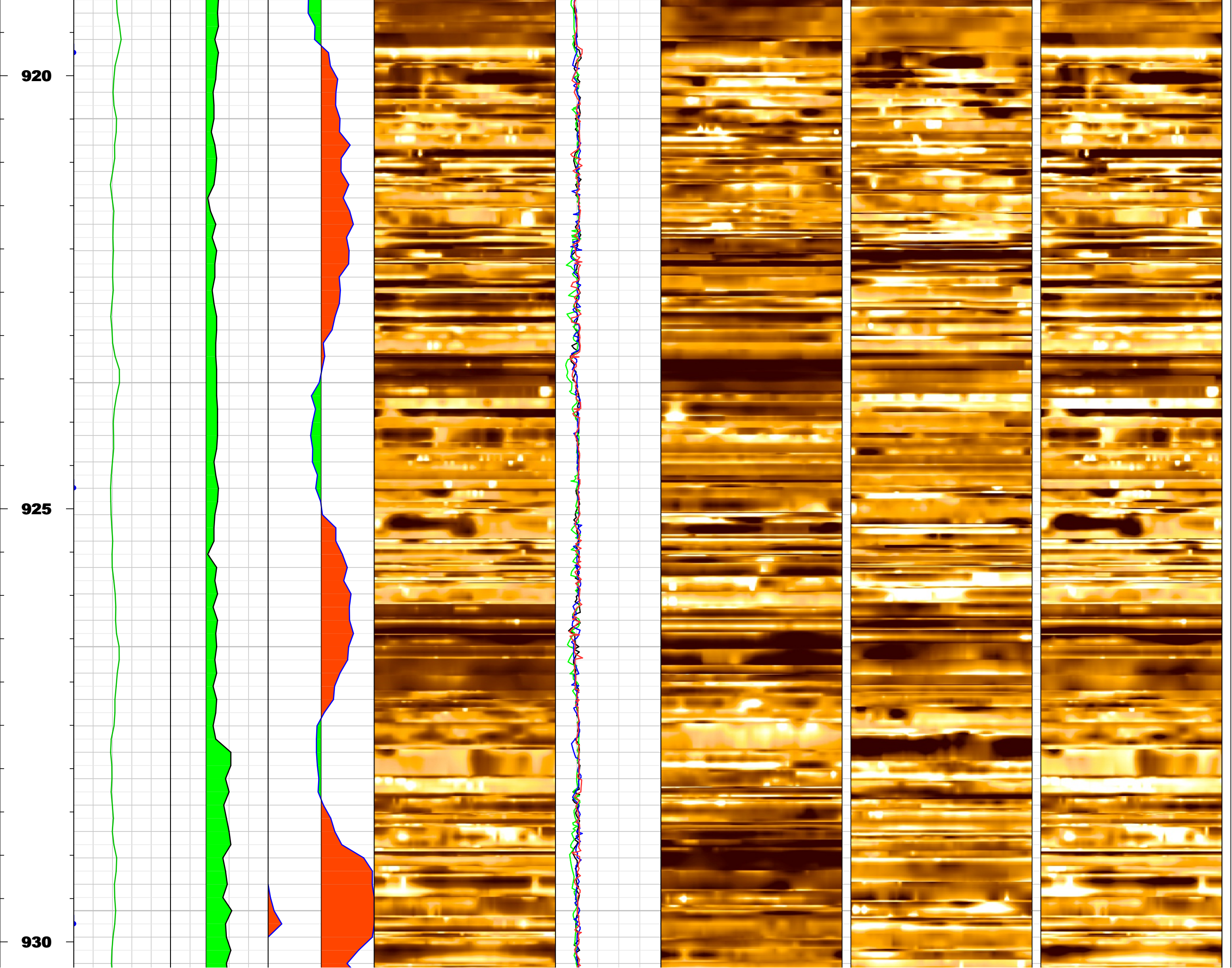
895







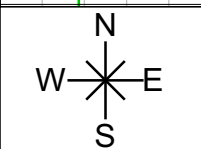




935

940

MD (m)  
1:40



HoleDevDip  
0 dega 10

GR RAB  
0 gAPI 200

RPM < 30 / RPM > 30  
ROP < 15.24 / ROP > 15.24

RPM  
-10 c/min 100

HeatedReversed  
21.42 246.33  
Deep Resistivity Static Image  
0 ohm.m 2.6e+02

Image Orientation°

N E S W N  
0 90 180 270 360

RES BD  
0.2 ohm.m 2000  
RES BM  
0.2 ohm.m 2000  
RES BS  
0.2 ohm.m 2000  
RES RING  
0.2 ohm.m 2000

HeatedReversed  
6.12 223.89  
Shallow Resistivity Dynamic Image  
0 ohm.m 2.6e+02

Image Orientation°

N E S W N  
0 90 180 270 360

HeatedReversed  
22.18 241.49  
Medium Resistivity Dynamic Image  
0 ohm.m 2.6e+02

Image Orientation°

N E S W N  
0 90 180 270 360

HeatedReversed  
30.09 246.59  
Deep Resistivity Dynamic Image  
0 ohm.m 2.6e+02

Image Orientation°

N E S W N  
0 90 180 270 360

