

TLC-04B

SonicScope

Monopole Low Compressional QC Plot

* A Mark of Schlumberger

Using the following logs: SonicScope6, NeoScope6

COMPANY: IODP

WELL: TLC-04B

FIELD:

COUNTRY: New Zealand

Date Logged: 15-Dec-2017

Date Processed:

19-Dec-2017

Surface Location Longitude: 178° 28' 33.318" E Latitude: 38° 49' 46.32" S

Elevations: DF: 11 m

GL: -720 m

Job Number:

FOLD HERE:

The well name, location and borehole reference data were furnished by the customer.

Any interpretation, research, analysis, data, results, estimates, or recommendation furnished with the services or otherwise communicated by Schlumberger to the customer at any time in connection with the services are opinions based on inferences from measurements, empirical relationships, and/or assumptions; which, inferences, empirical relationships and/or assumptions are not infallible and with respect to which professionals in the industry may differ. Accordingly, Schlumberger cannot and does not warrant the accuracy, correctness, or completeness of any such interpretation, research, analysis, data, results, estimates, or recommendation. The customer acknowledges that it is accepting the services "as is," that Schlumberger makes no representation or warranty, express or implied, of any kind or description in respect thereto, and that such services are delivered with the explicit understanding and agreement that any action taken based on the services received shall be at its own risk and responsibility, and no claim shall be made against Schlumberger as a consequence thereof.

Svc. Order #:	Techlog Vers: 2017.2	Analyst P. Bhuyan	Process Date: 19 December 2017
---------------	----------------------	-------------------	--------------------------------

Mud and Borehole Measurements:		
Casing Size:	BHT : 11 degC	Bit Size: 8.5 in
Casing ID:	Type Fluid in Hole: Sea Water	
Casing Weight	Mud density: 1.030507 g/cm3	

Remarks:

Data might be affected due to borehole condition and mud contamination.
Compressional slowness has been processed from Monopole Low waveform.

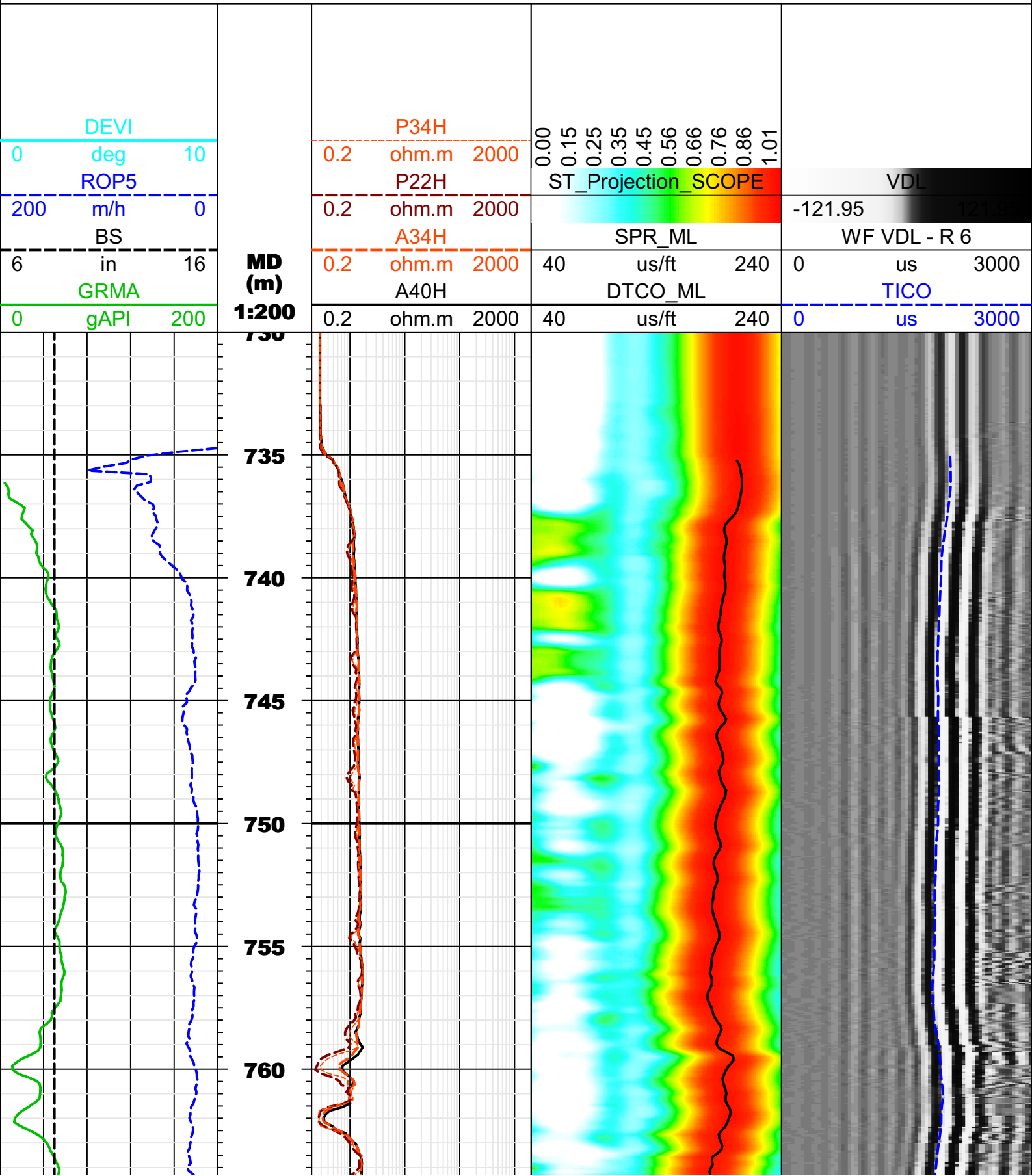
Processing parameters summary

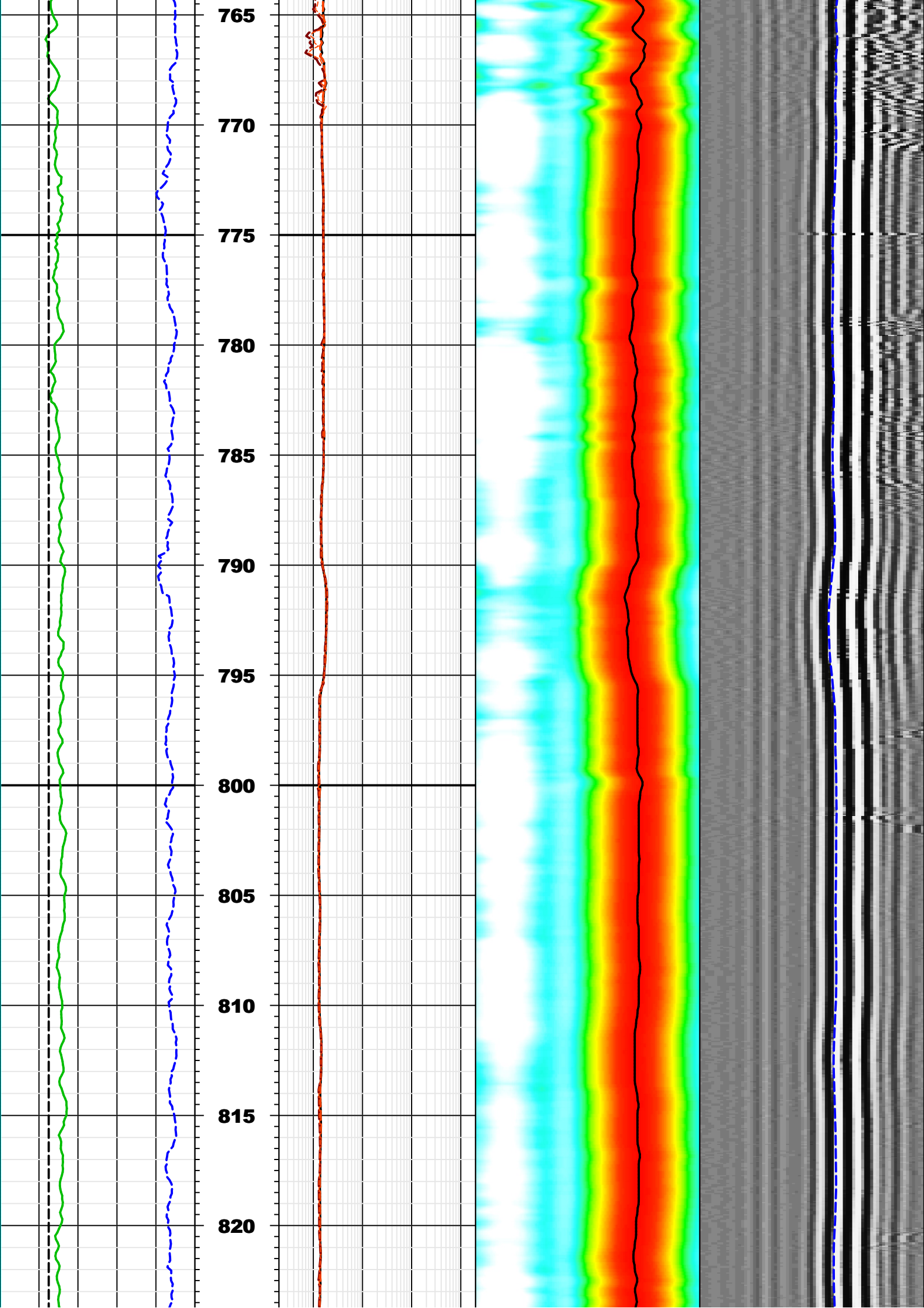
Monopole Low Leaky-P

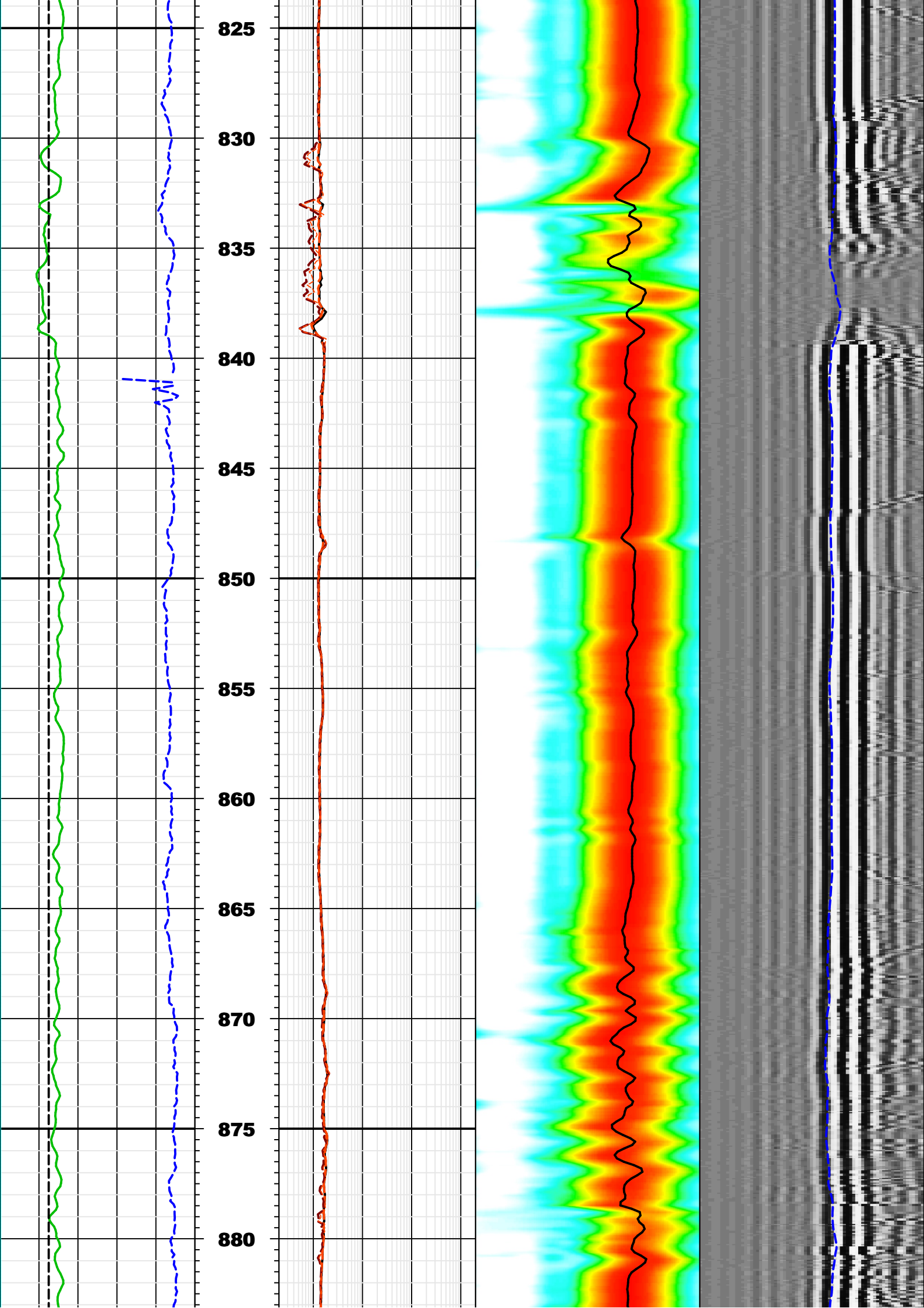
Borehole status: Open hole
Energy threshold: 5 Pa
Filter band high: 4600 Hz
Formation bulk density: 2.1 g/cm³
Leaky-P: Yes
Mud slowness: 200 us/ft
Multishot NRSA: 7
Semblance threshold: 0.35
STC stacking: Yes
Slowness width: 20 us/ft
Min frequency: 0 Hz
Time lower limit: 300 us
Shear upper limit: 160 us/ft
Time upper limit: 5700 us
Average Vp/Vs ratio: 2.6
Receiver selection: R1;R2;R3;R4;R5;R6;R7;R8;R9;R10;R11;R12

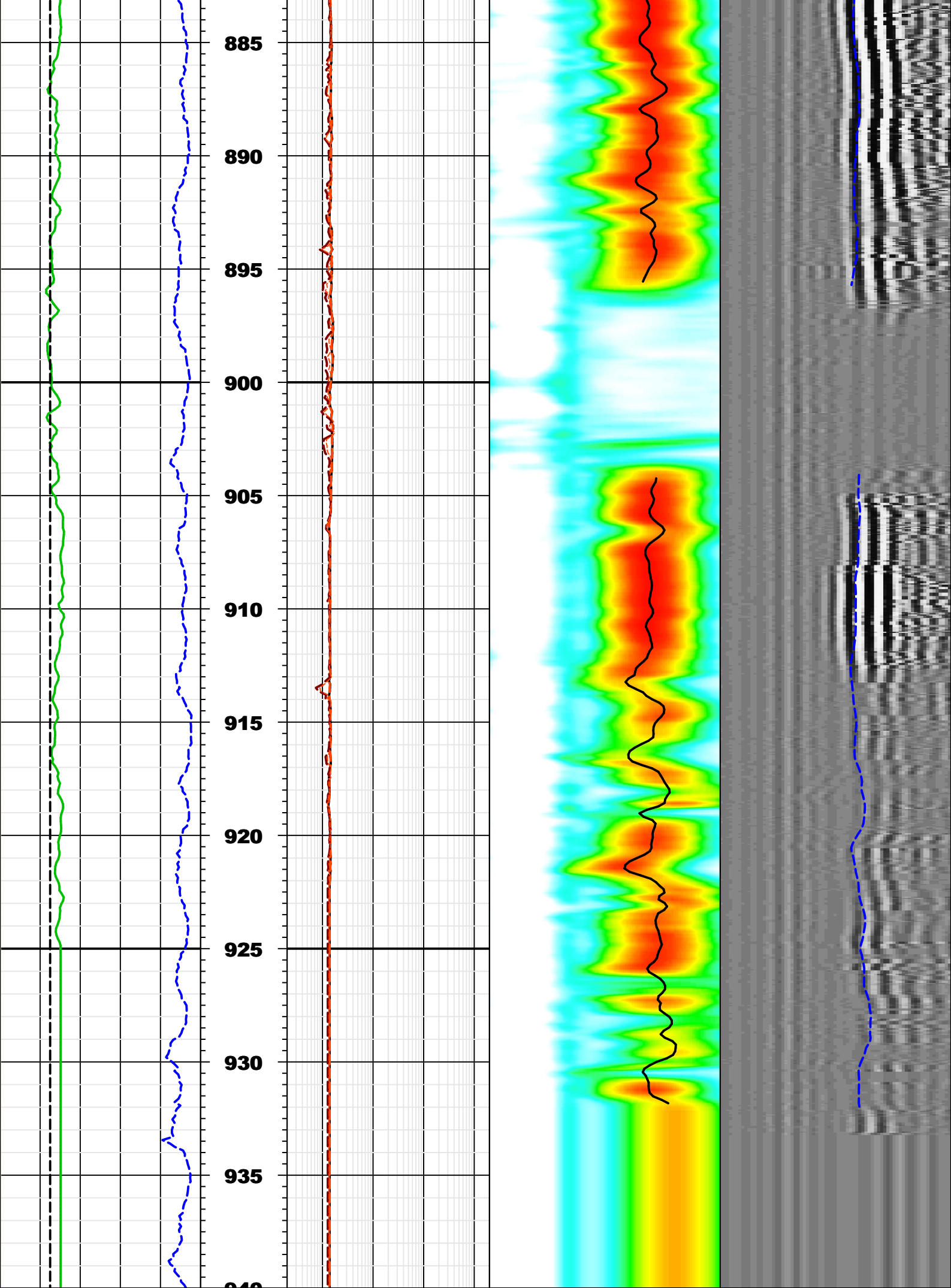
Bit size: 8.5 in
Energy threshold option: Collar only
Filter band low: 2600 Hz
Formation type: Very slow
Dispersion file mode: Vp/Vs Based
Mud density: 1.030507 g/cm³
Search band offset: 1000 us
Slowness lower limit: 40 us/ft
Stacked frames: 3
Compute SFA: Yes
Model order: 2
Compressional lower limit: 90 us/ft
Shear upper limit: 1112 us/ft
Time width: 2250 us
Waveform: WFA_MLT

Caliper: BS in
Filter length: 41
Filter type: Static filter
Average hole size: 8.5 in
Receiver/transmitter/DDBHC mode: Receiver mode
Mud type: WBM
Search band width: 3000 us
Slowness step: 2 us/ft
Slowness upper limit: 240 us/ft
Max frequency: 12000 Hz
Matching tolerance: 50
Compressional upper limit: 202.5 us/ft
Time step: 300 us
Integration time window: 900 us
Reference receiver: 6









Well: TLC-04B

Field:

Country: Newzealand

Date Logged: 15-Dec-2017 Date Processed: 19-Dec-2017

Well Location: Longitude: 178° 28' 33.318" E Latitude: 38° 49' 46.32" S

Elevations: DF: 11m GL: -720m
Job Number: