

TLC-04B

SonicScope

Quadrupole Shear Processing QC Plot

* A Mark of Schlumberger

Using the following logs: SonicScope6, NeoScope6

COMPANY: IODP
 WELL: TLC-04B
 FIELD:
 COUNTRY: New Zealand

Date Logged: 15-Dec-2017 Date Processed: 19-Dec-2017

Surface Location Longitude: 178° 28' 33.318" E Latitude: 38° 49' 46.32" S
 Elevations: DF: 11 m GL: -720 m

Job Number:

FOLD HERE: The well name, location and borehole reference data were furnished by the customer.

Any interpretation, research, analysis, data, results, estimates, or recommendation furnished with the services or otherwise communicated by Schlumberger to the customer at any time in connection with the services are opinions based on inferences from measurements, empirical relationships, and/or assumptions; which, inferences, empirical relationships and/or assumptions are not infallible and with respect to which professionals in the industry may differ. Accordingly, Schlumberger cannot and does not warrant the accuracy, correctness, or completeness of any such interpretation, research, analysis, data, results, estimates, or recommendation. The customer acknowledges that it is accepting the services "as is," that Schlumberger makes no representation or warranty, express or implied, of any kind or description in respect thereto, and that such services are delivered with the explicit understanding and agreement that any action taken based on the services received shall be at its own risk and responsibility, and no claim shall be made against Schlumberger as a consequence thereof.

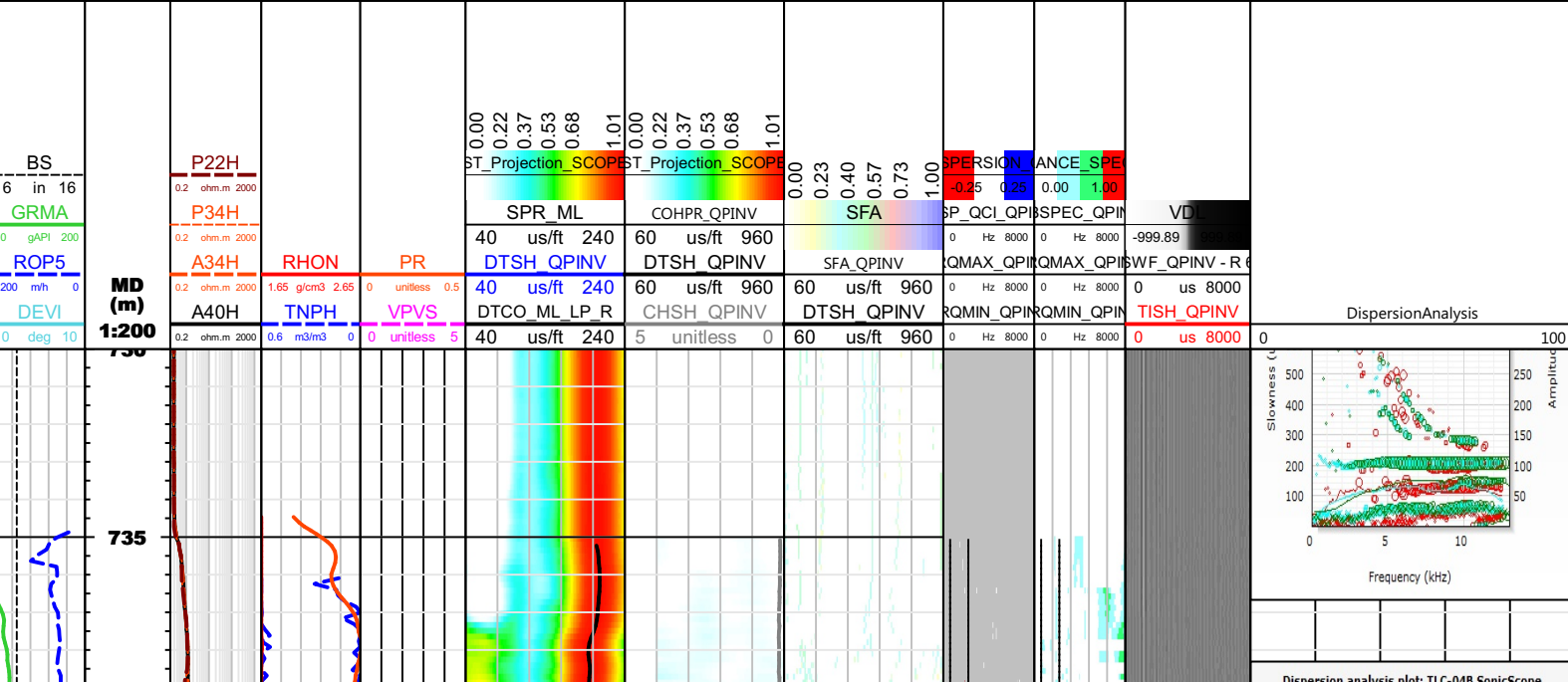
Svc. Order #:	Techlog Vers: 2017.2	Analyst P. Bhuyan	Process Date: 19 December 2017
---------------	----------------------	-------------------	--------------------------------

Mud and Borehole Measurements:		
Casing Size:	BHT : 11 degC	Bit Size: 8.5 in
Casing ID:	Type Fluid in Hole: Sea Water	
Casing Weight:	Mud density: 1.030507 g/cm3	

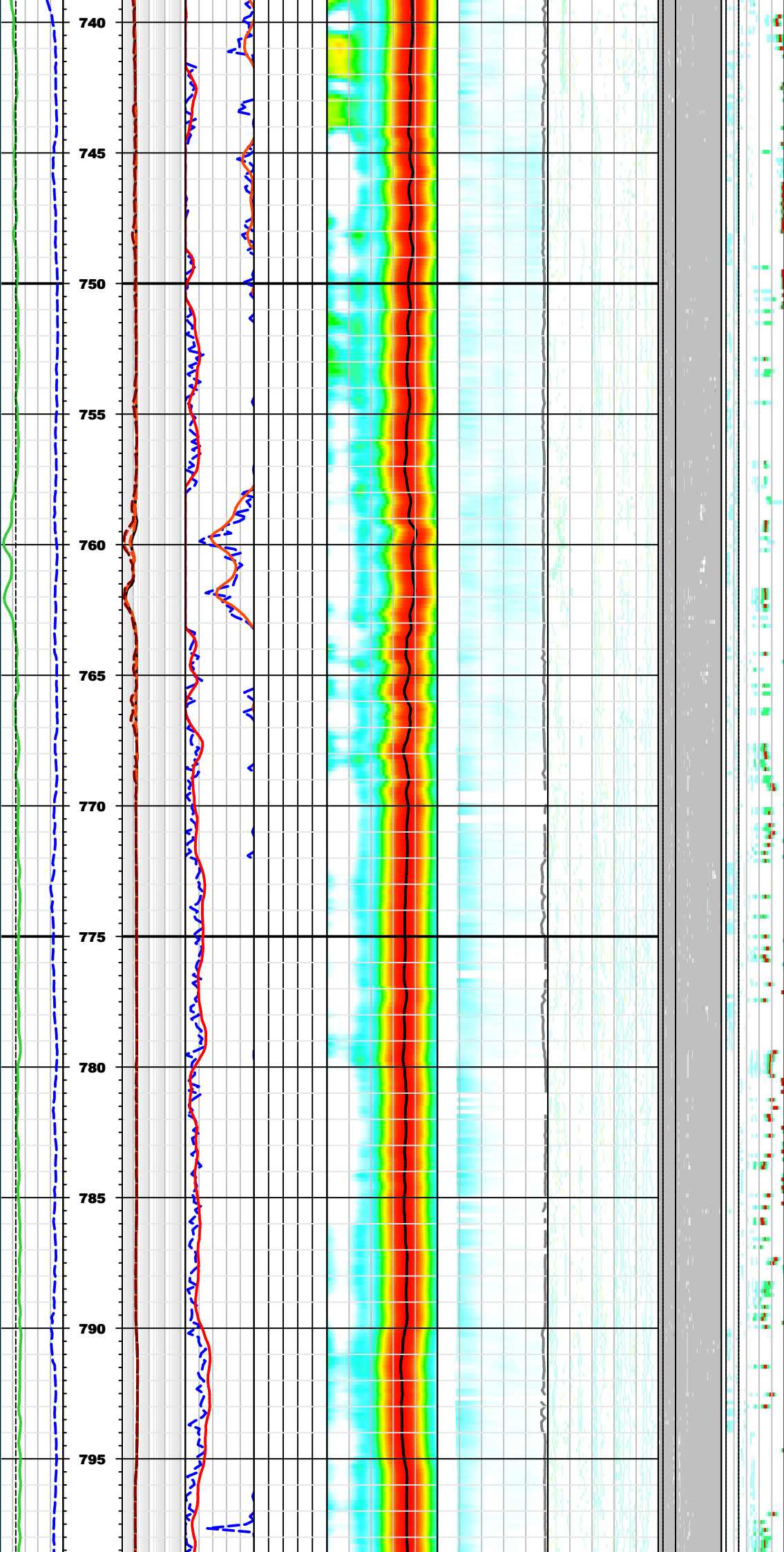
Remarks:
 Quadrupole waveform is processed to get formation shear arrival.
 Data might be affected due to borehole condition.

Processing parameters summary

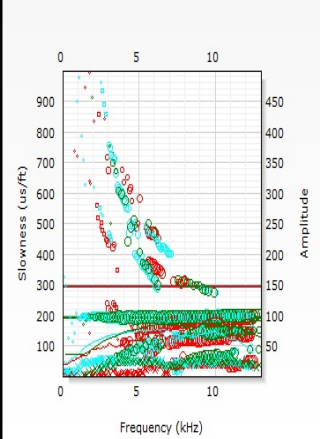
Quadrupole inversion#5.		
Binning option: Yes Compressional slowness: DTCO_ML_LP_MS7_R_1_RUN4 us/ft Filter band high for inversion: 2200 Hz Filter band low for filtered waveform: 0 Hz Inversion type: 2-Parameters Mud density: 1.030507 g/cm3 Max frequency for SFA: 4000 Hz Slowness upper limit: 960 us/ft Min frequency for TKO: 0 Hz Waveform: WFA_QPT Processing window start: 0 us	Bin width: 1000 Hz Window move out (Shear DT): DTSH_QPND_MS7_R_6_RUN4_2 us/ft Filter band high for filtered waveform: 5000 Hz Filter type: Static filter Monopole high ST Projection: SPR_ML_LP_MS7_R_1_RUN4 unitless Mud type: WBM Min frequency for SFA: 0 Hz Waveform length: 512 Model order: 3 Reference receiver: 6 Processing window width: 10000 us	Caliper: 8.5 in Leaky-Q filtering: Yes Filter band low for inversion: 600 Hz Formation type: Very slow Mud slowness: 200 us/ft Multishot NRSA: 7 Slowness lower limit: 60 us/ft Max frequency for TKO: 12000 Hz Matching tolerance: 50 Receiver selection: R1,R2,R3,R4,R5,R6,R7,R8,R9,R10,R11,R12



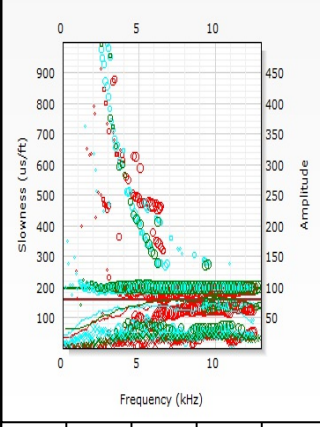
Dispersion analysis plot: TLC-04B.SonicScope



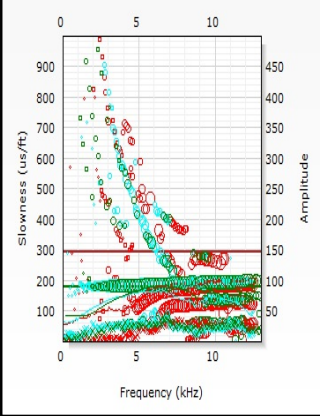
Current depth = 744.982 m



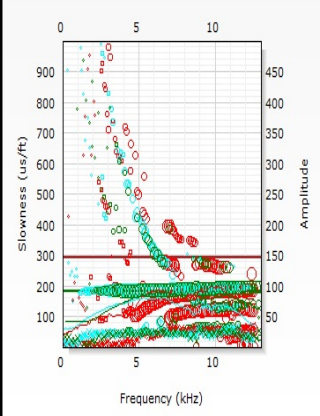
Dispersion analysis plot: TLC-04B.SonicScope
Current depth = 759.968 m

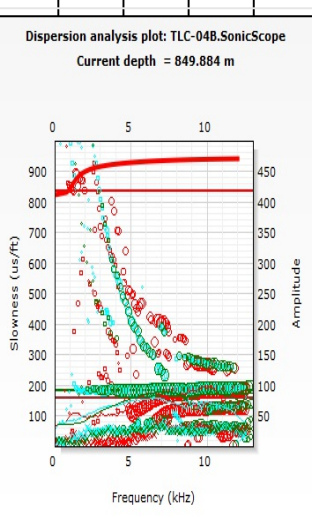
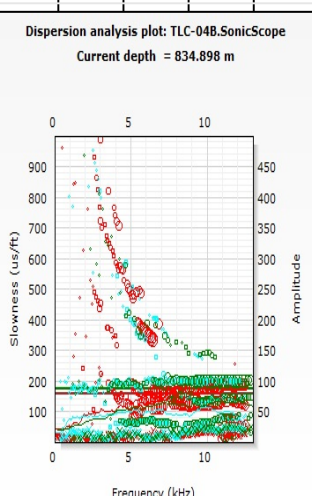
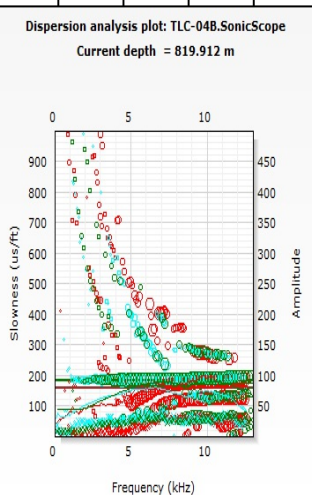
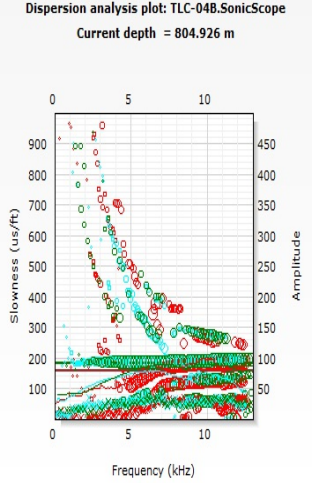
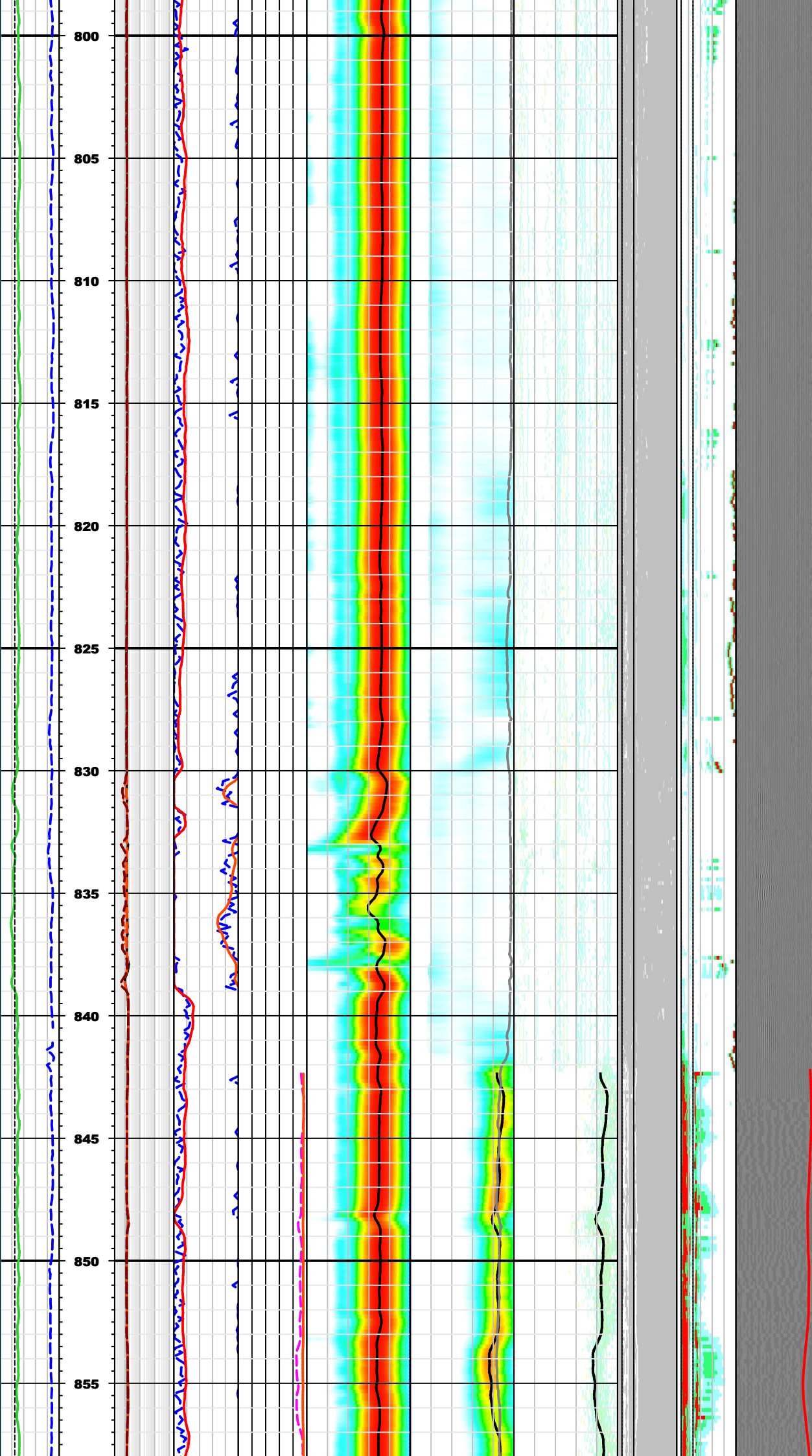


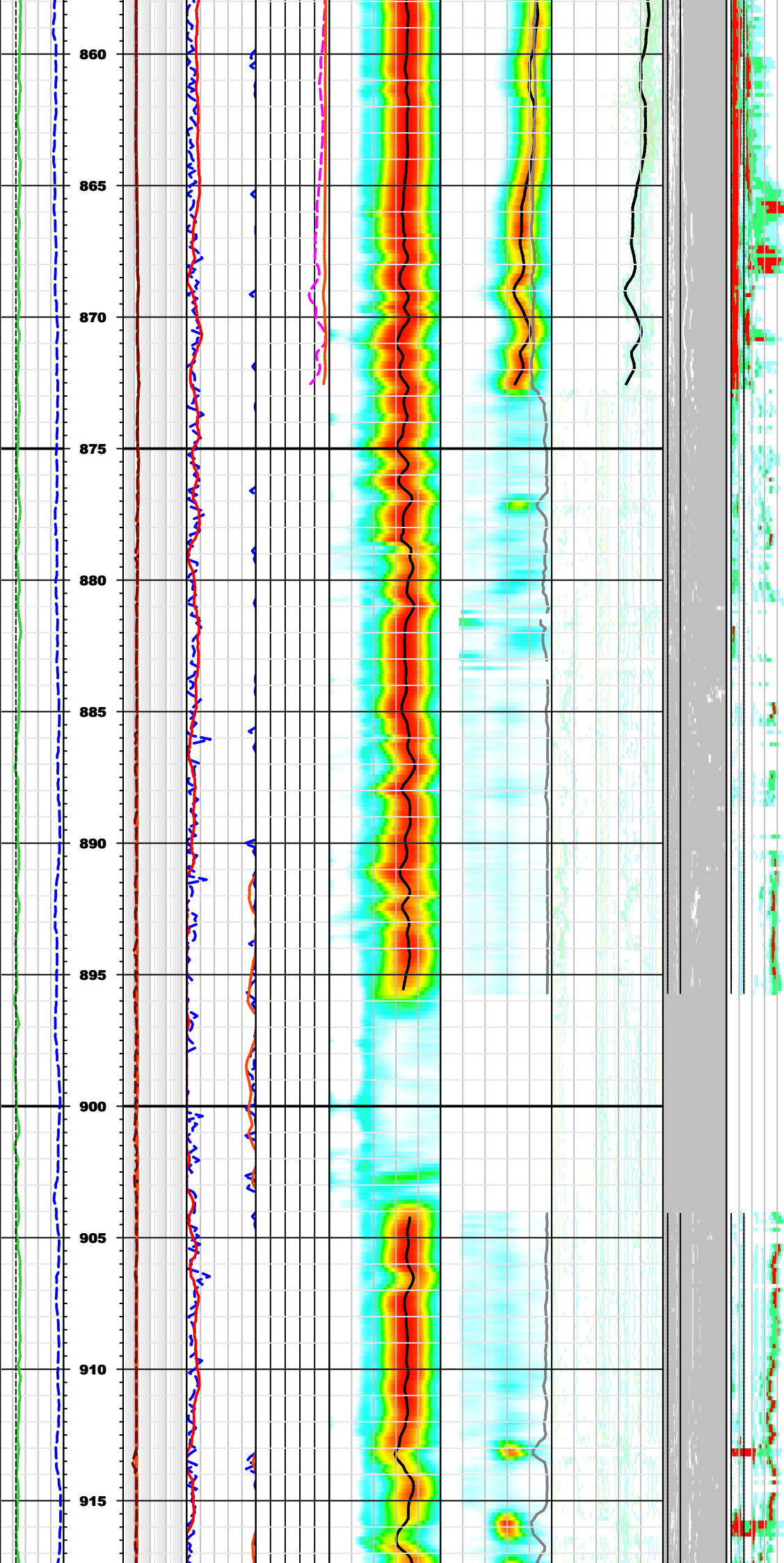
Dispersion analysis plot: TLC-04B.SonicScope
Current depth = 774.954 m



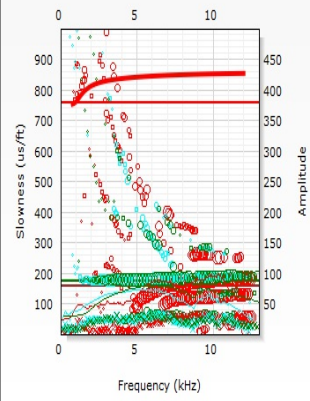
Dispersion analysis plot: TLC-04B.SonicScope
Current depth = 789.94 m



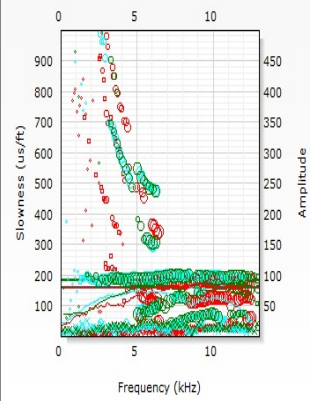




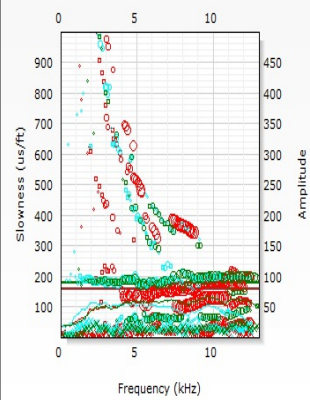
Dispersion analysis plot: TLC-04B.SonicScope
Current depth = 864.87 m



Dispersion analysis plot: TLC-04B.SonicScope
Current depth = 879.856 m



Dispersion analysis plot: TLC-04B.SonicScope
Current depth = 894.842 m



Dispersion analysis plot: TLC-04B.SonicScope
Current depth = 909.828 m

