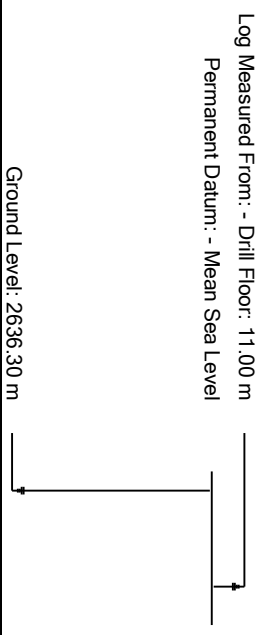


**geoVISION Image Service**  
**1:40 Measured Depth**  
**Recorded Mode Data**



**Company:** IODP  
**Well:** U1518A  
**Field:** HSM-15A  
**Rig Name:** Joides Resolution  
**Expedition:** 372  
**Country:** New Zealand

**Latitude:** 38° 51' 32.202" S **UWID:**  
**Longitude:** 178° 53' 45.618" E **Rig Name:** Joides Resolution  
**Block:** EXP372 **Rig Type:** Drill Ship  
**FL1:**  
**FL2:**



|                           |                            |                         |  |
|---------------------------|----------------------------|-------------------------|--|
| <b>Acquisition Dates:</b> | 19-Dec-2017 -- 20-Dec-2017 | <b>Other Services:</b>  |  |
| <b>Log Interval:</b>      | 2642.00(m) -- 2766.00(m)   | <b>SonicScope</b>       |  |
| <b>Index Types:</b>       | Measured Depth             | <b>proVISION Plus</b>   |  |
| <b>Index Scales:</b>      | 1:40                       | <b>geoVISION Images</b> |  |
| <b>Depth Source:</b>      | Driller's Depth            | <b>StethoScope</b>      |  |
| <b>Depth Sensor:</b>      | DES                        |                         |  |
| <b>Print Type:</b>        | Final                      |                         |  |
| <b>Spud Date:</b>         | 19-Dec-2017                |                         |  |

**Disclaimer**

THE USE OF AND RELIANCE UPON THIS RECORDED-DATA BY THE HEREIN NAMED COMPANY (AND ANY OF ITS AFFILIATES, PARTNERS, REPRESENTATIVES, AGENTS, CONSULTANTS AND EMPLOYEES) IS SUBJECT TO THE TERMS AND CONDITIONS AGREED UPON BETWEEN SCHLUMBERGER AND THE COMPANY, INCLUDING: (a) RESTRICTIONS ON USE OF THE RECORDED-DATA; (b) DISCLAIMERS AND WAIVERS OF WARRANTIES AND REPRESENTATIONS REGARDING COMPANY'S USE AND RELIANCE UPON THE RECORDED-DATA; AND (c) CUSTOMER'S FULL AND SOLE RESPONSIBILITY FOR ANY INFERENCE DRAWN OR DECISION MADE IN CONNECTION WITH THE USE OF THIS RECORDED-DATA.

**Run 1**

**FINAL GVR LOG 2**

**Software Version**

|                             |   |                                       |                         |
|-----------------------------|---|---------------------------------------|-------------------------|
| <b>Acquisition System</b>   |   | <b>Version</b>                        |                         |
| Maxwell 2017 SP3            |   | 7.3.92069.3100                        |                         |
| <b>Computation</b>          | <b>Description</b>  | <b>Version</b>                        |                         |
| RAB6Res                     | RAB6 Resistivity Computation Package for both Real-time and Recorded Mode | 7.3.92069.3100                        |                         |
| RAB6GR                      | RAB6 Gamma Ray Computation Package for both Real-time and Recorded Mode   | 7.3.92069.3100                        |                         |
| <b>SoftwareVersion_Tool</b> | <b>SoftwareVersion_System Version</b>                                     | <b>SoftwareVersion_Loaded Version</b> |                         |
| HSPM                        | 20.3c.062   | 7.3.92069.3100                        |                         |
| <b>Tool Elements</b>        | <b>Description</b>  | <b>Software Version</b>               | <b>Firmware Version</b> |
| RBEC                        | Electronics Chassis Assembly for RAB6-C                                   | 7.3.92069.3100                        | V8.6B                   |

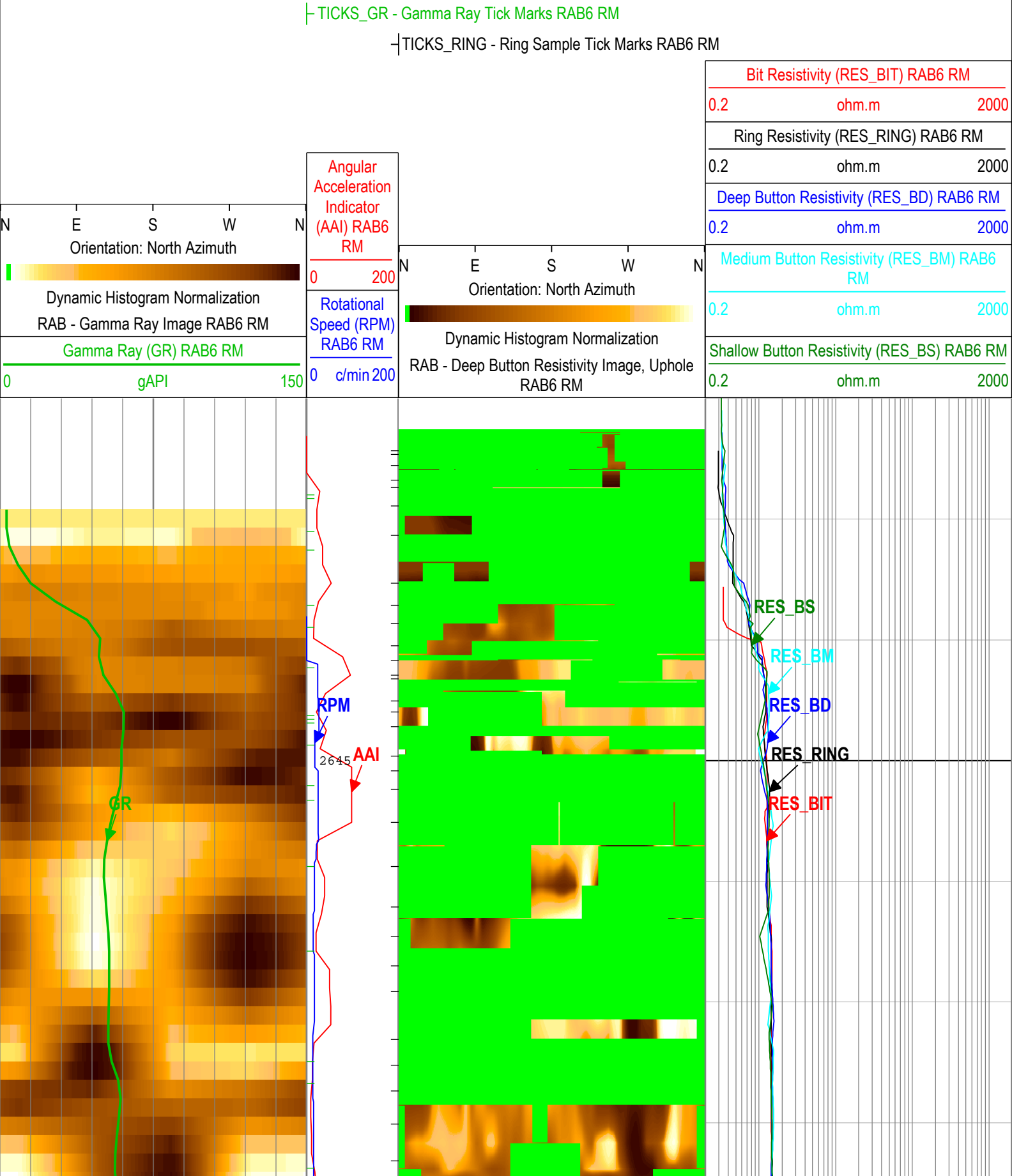
**Pass Summary**

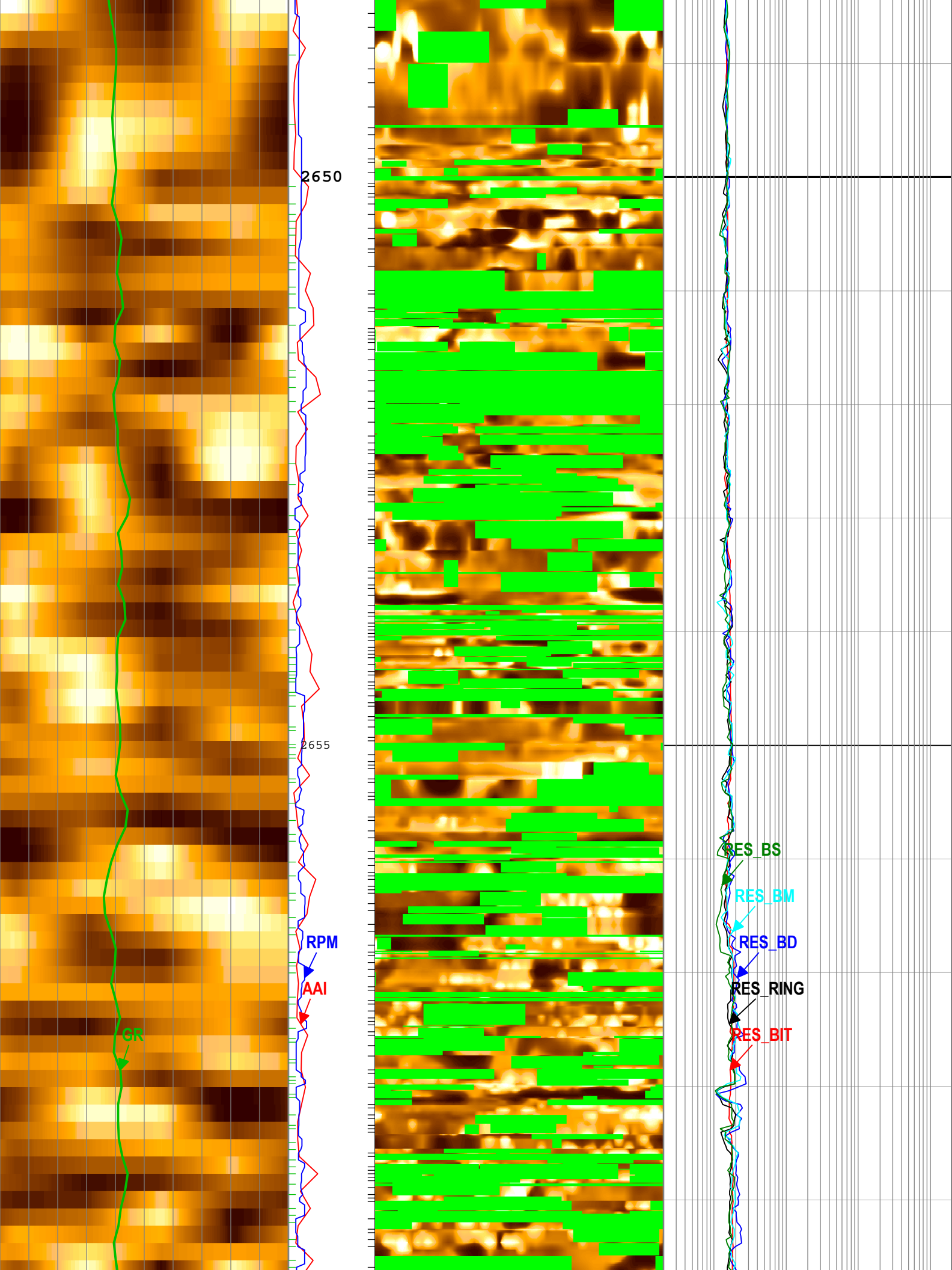
|                 |                       |                  |            |               |              |             |                              |
|-----------------|-----------------------|------------------|------------|---------------|--------------|-------------|------------------------------|
| <b>Run Name</b> | <b>Pass Objective</b> | <b>Direction</b> | <b>Top</b> | <b>Bottom</b> | <b>Start</b> | <b>Stop</b> | <b>Include Parallel Data</b> |
|-----------------|-----------------------|------------------|------------|---------------|--------------|-------------|------------------------------|

|       |          |      |           |           |                           |                            |     |
|-------|----------|------|-----------|-----------|---------------------------|----------------------------|-----|
| Run 1 | Drilling | Down | 2643.78 m | 2765.96 m | 19-Dec-2017<br>7:05:13 AM | 20-Dec-2017<br>10:43:06 PM | Yes |
|-------|----------|------|-----------|-----------|---------------------------|----------------------------|-----|

All depths are referenced to toolstring zero

Description: GVR GR Image, Button Image, Resistivity Format: Log ( FINAL GVR LOG 2 ) Index Scale: 1:40 Index Unit: m Index Type: Measured Depth  
Creation Date: 29-Dec-2017 22:44:01





2650

2655

RPM

AAI

GR

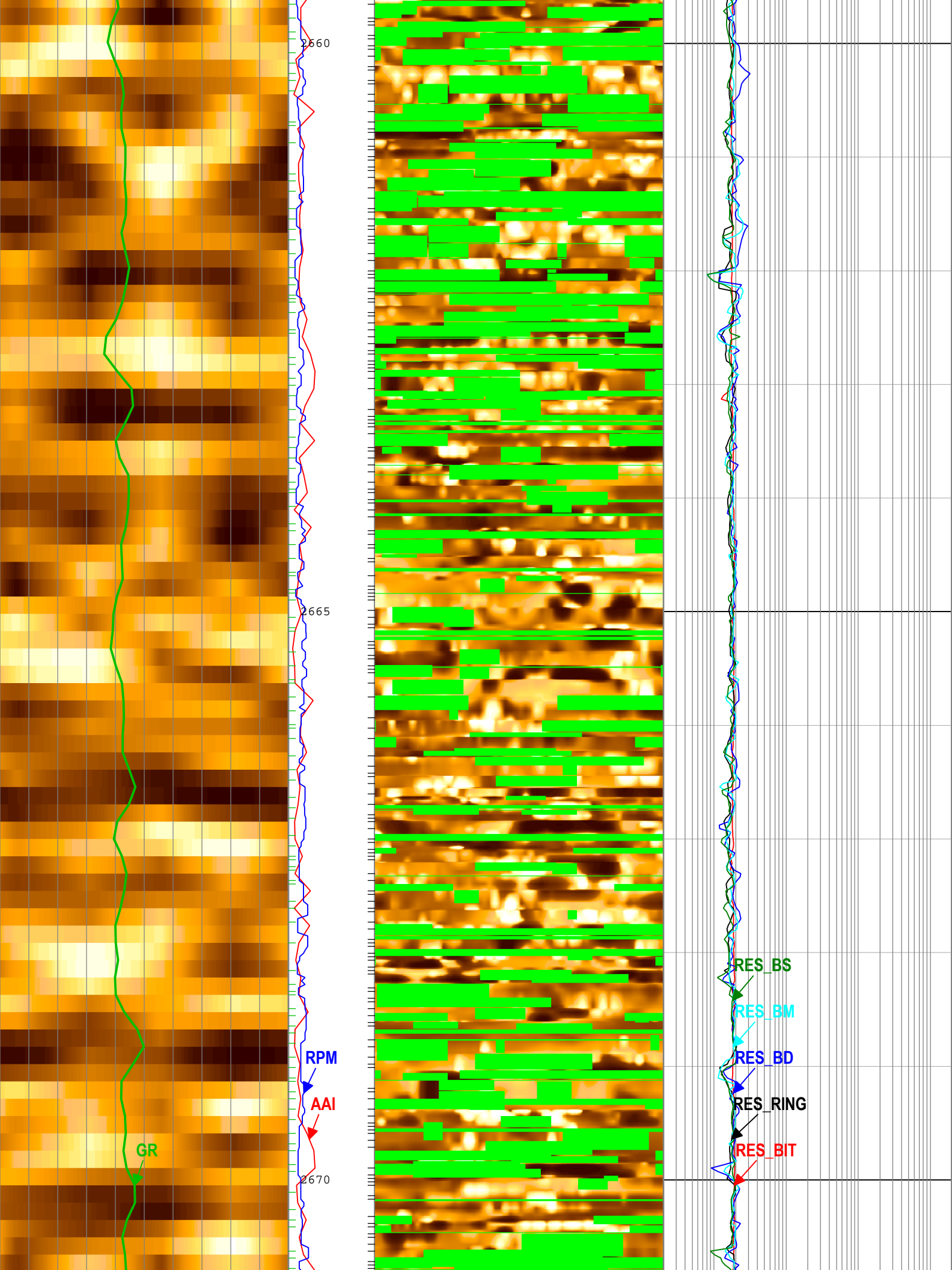
RES\_BS

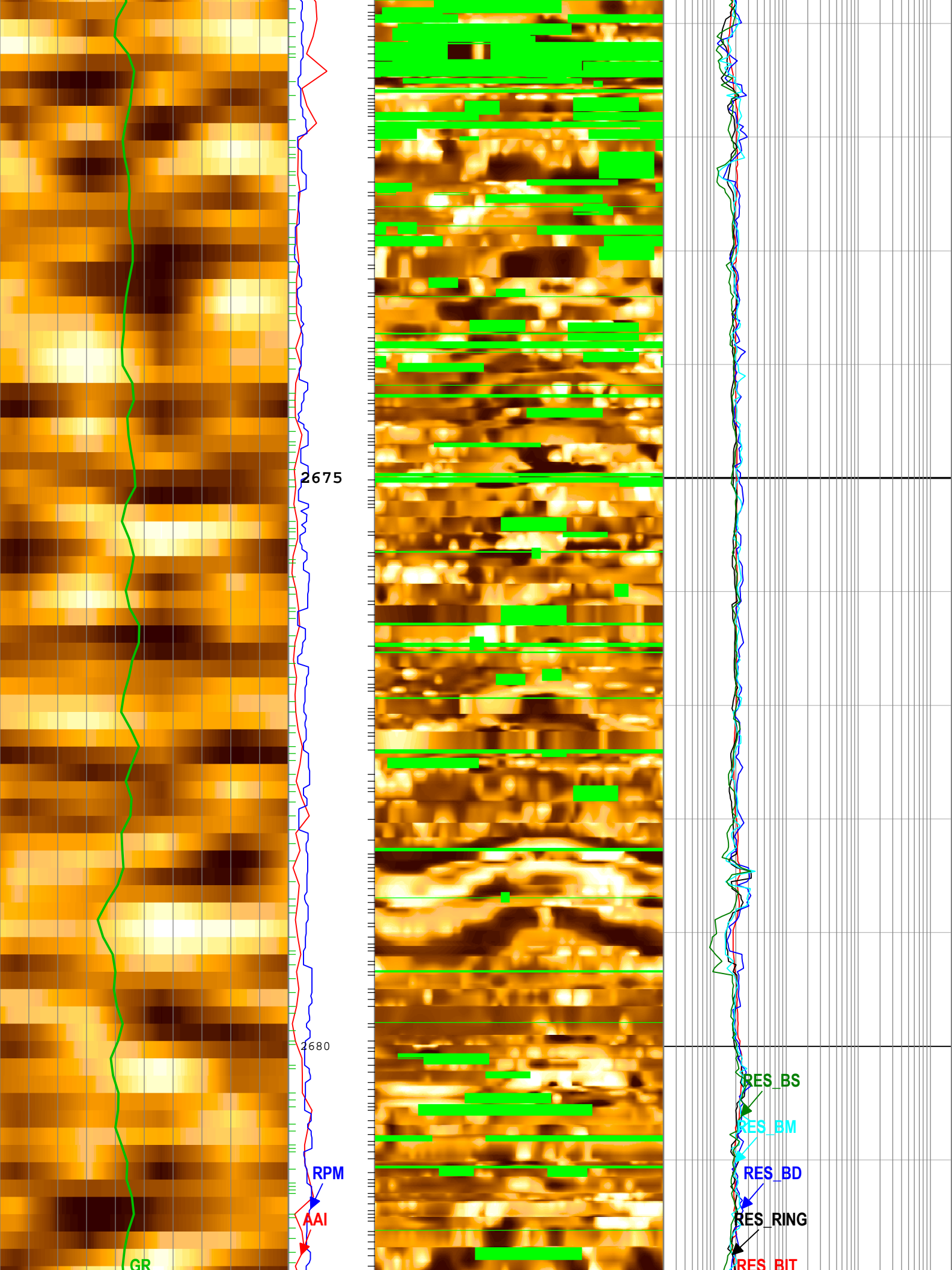
RES\_BM

RES\_BD

RES\_RING

RES\_BIT





2675

2680

GR

RPM

AAI

RES\_BS

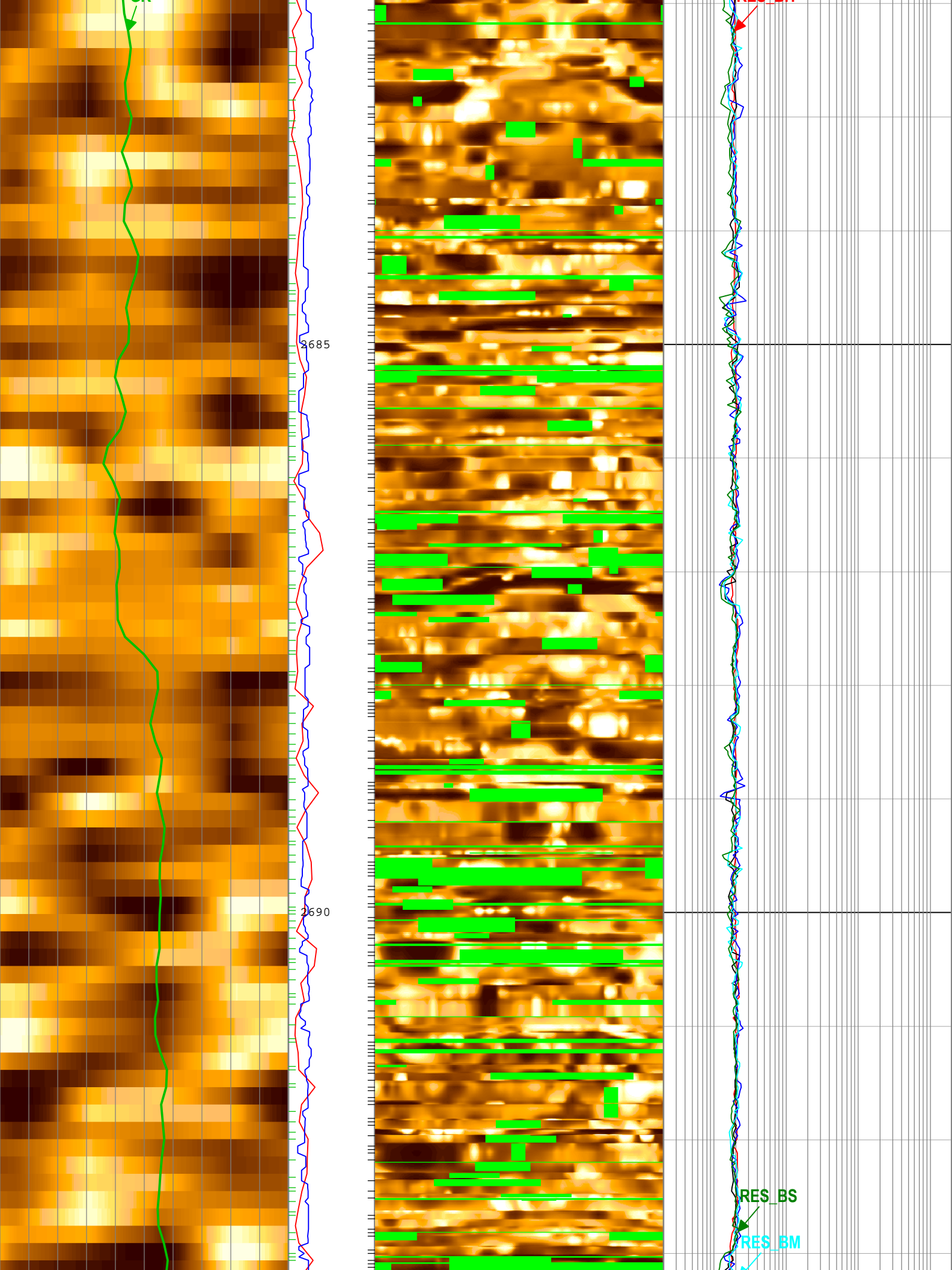
RES\_BM

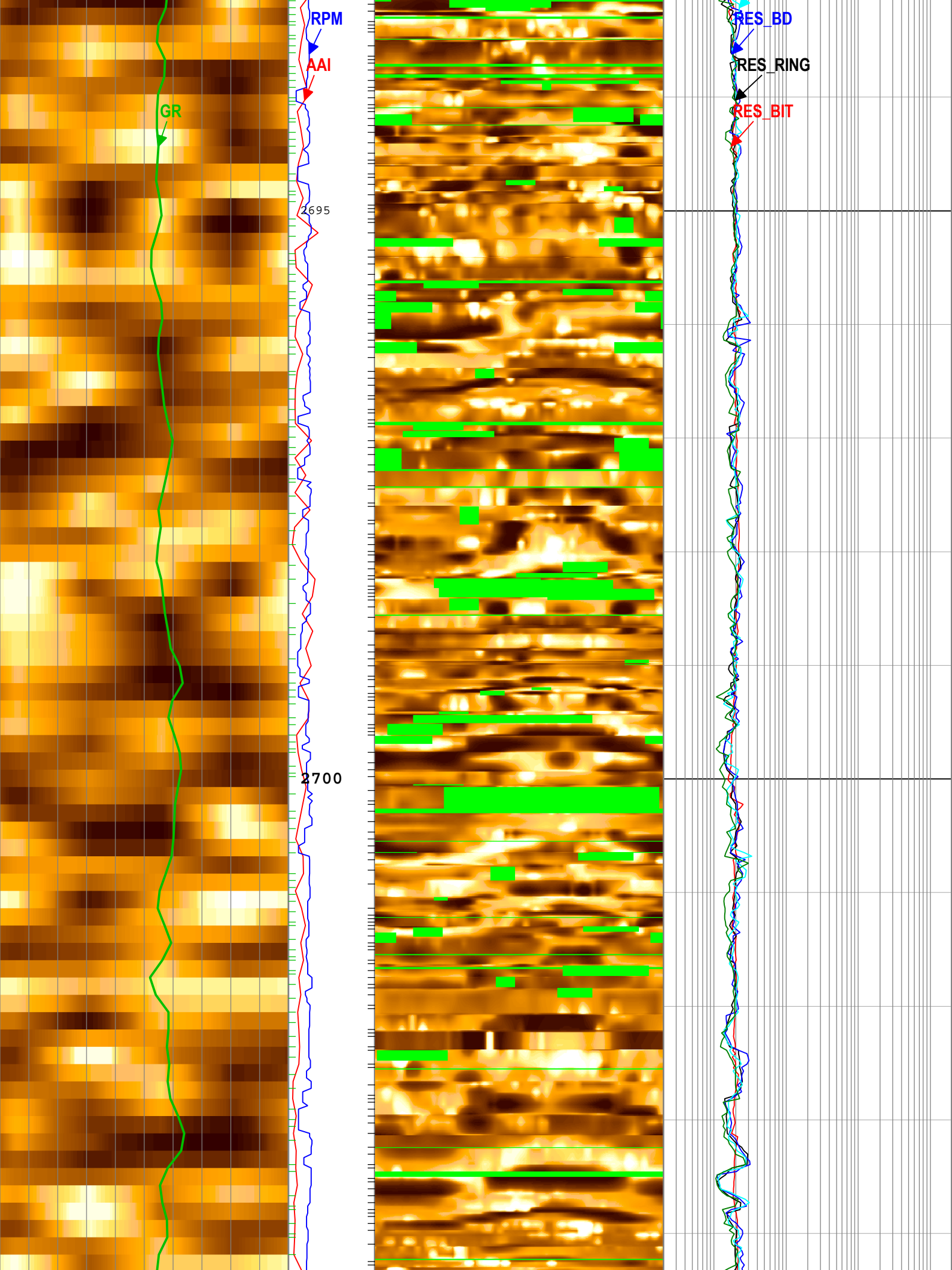
RES\_BD

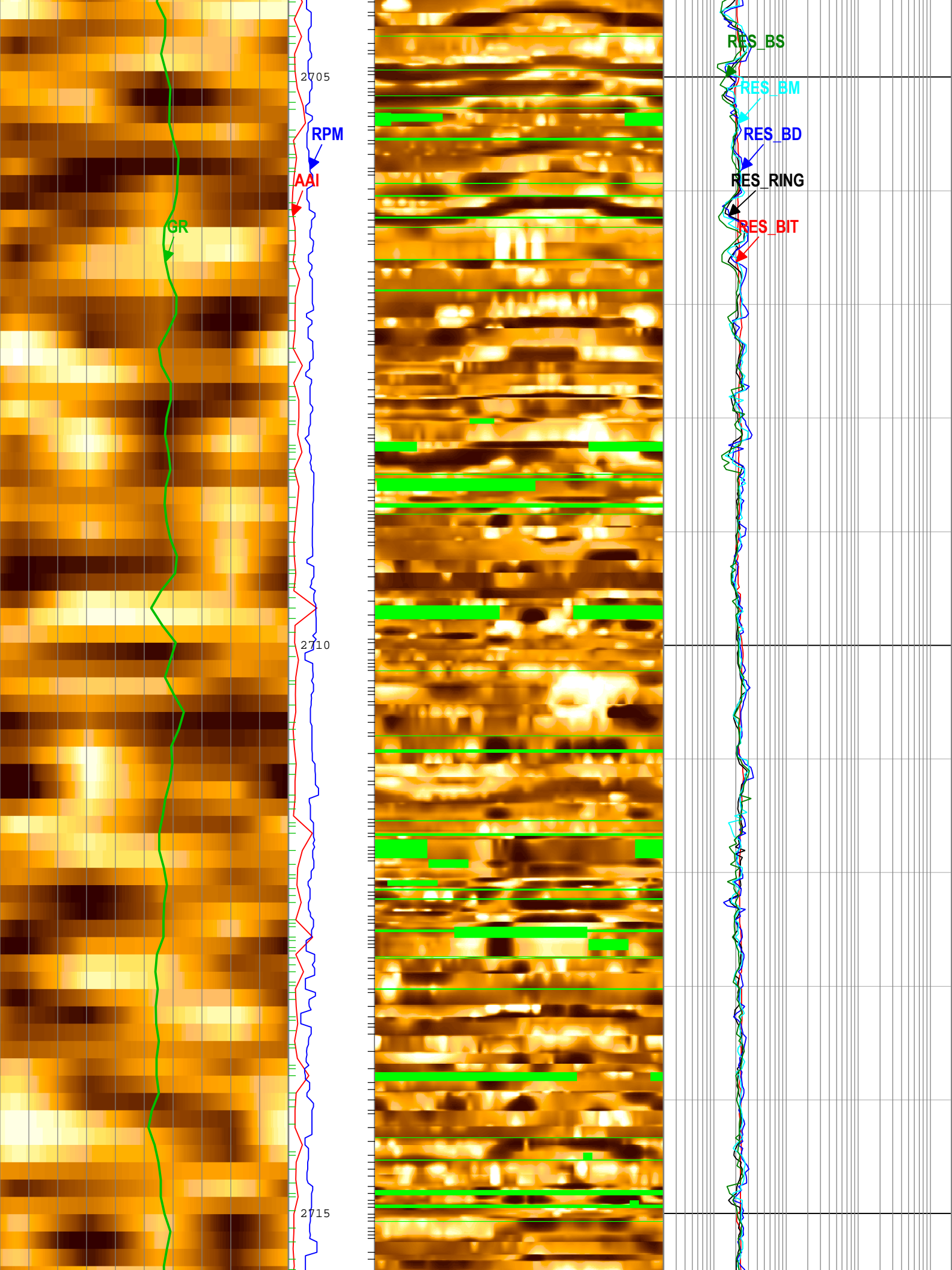
RES\_RING

RES\_BIT

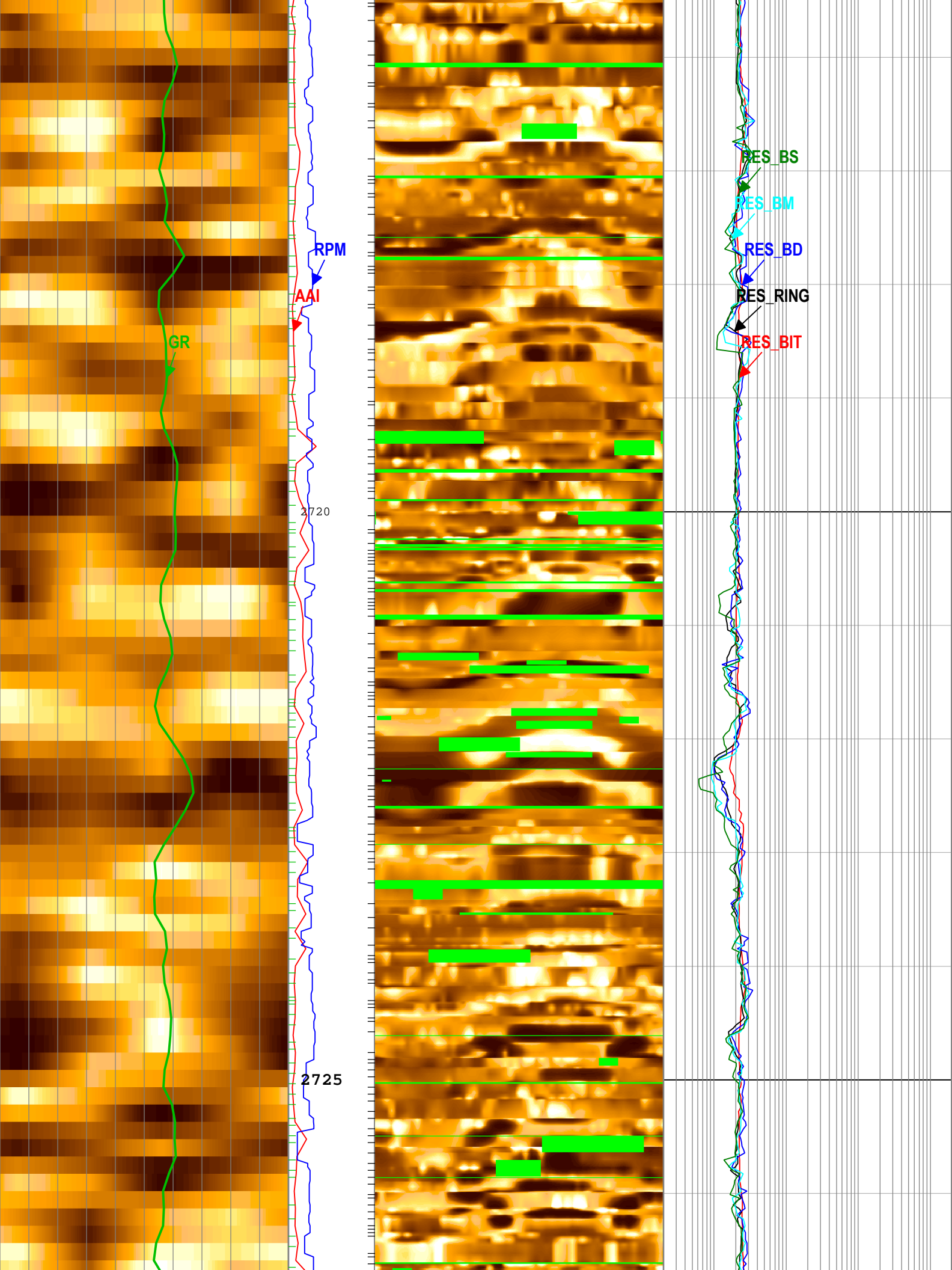












GR

RPM

AAI

2720

2725

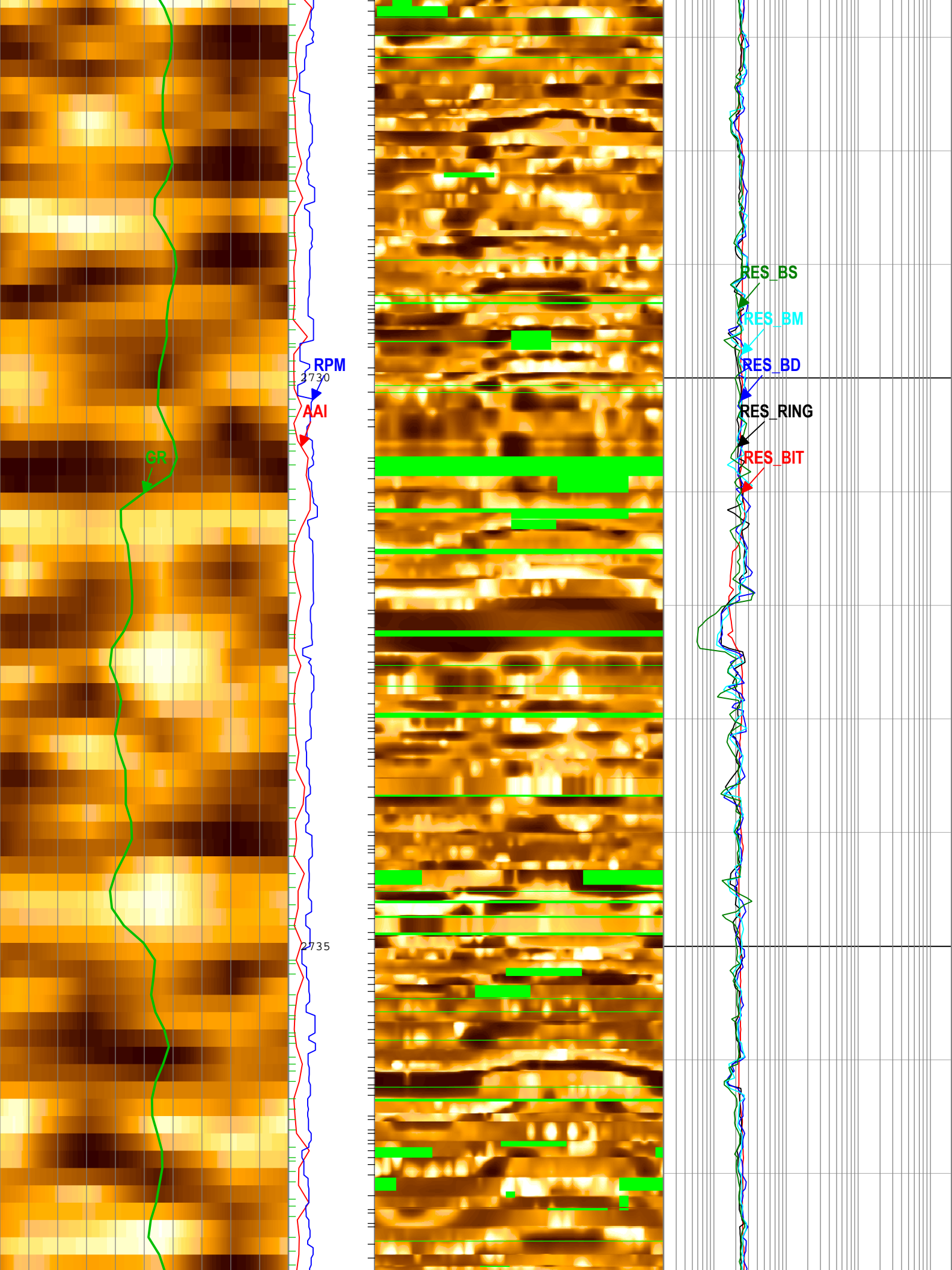
RES\_BS

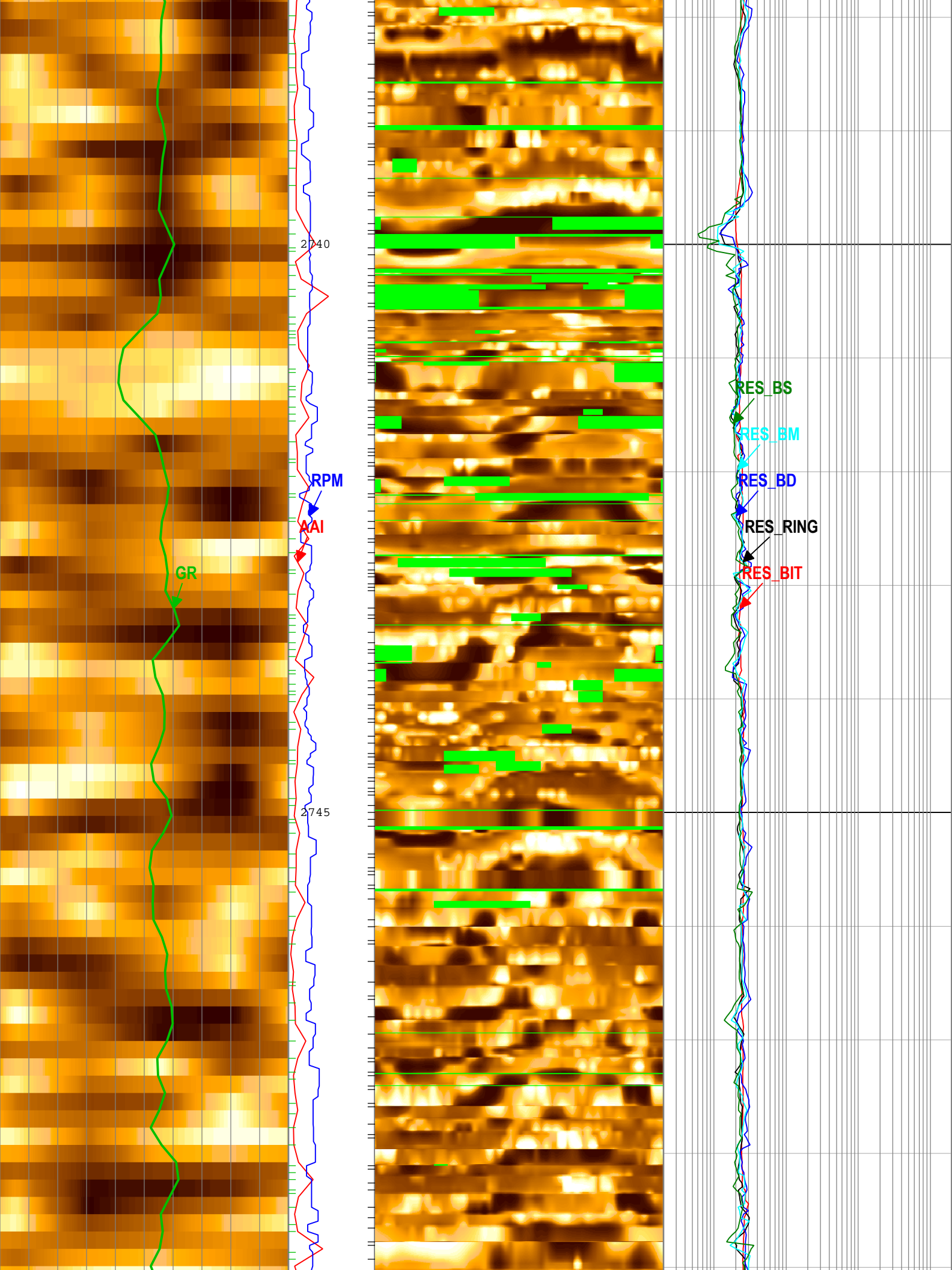
RES\_BM

RES\_BD

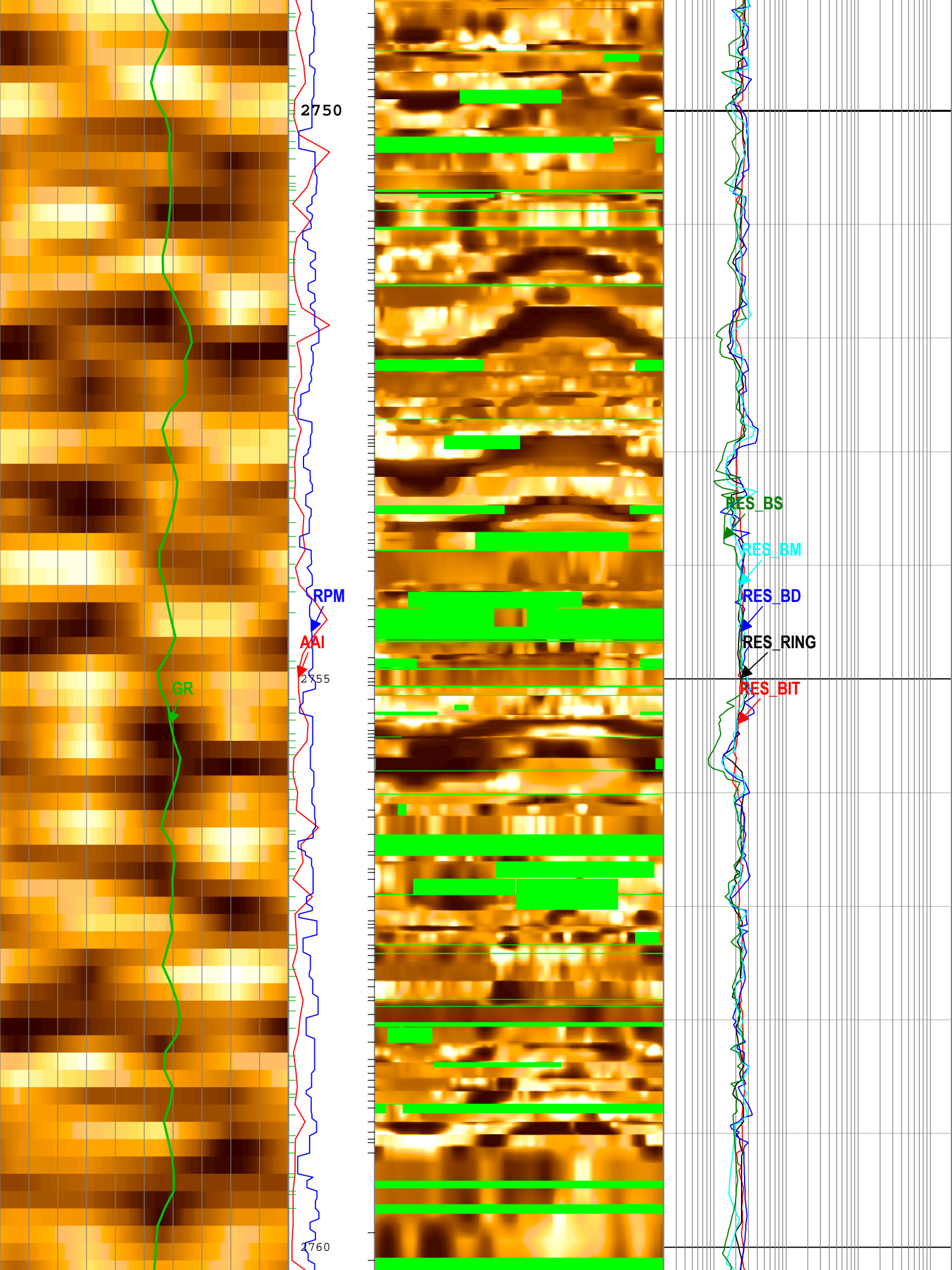
RES\_RING

RES\_BIT

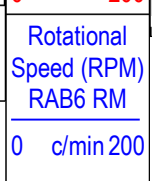
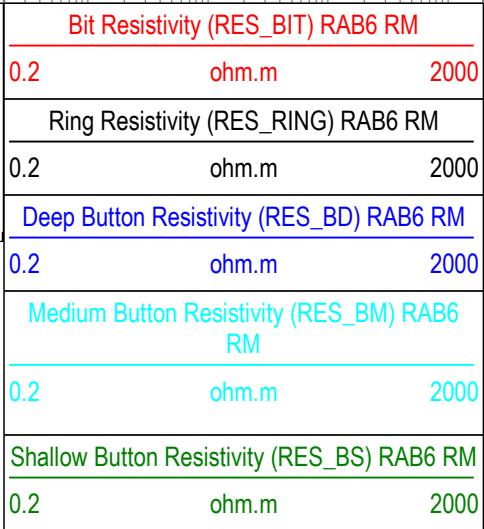
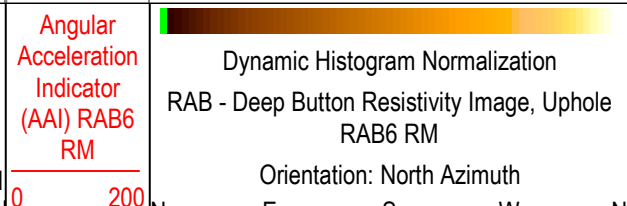
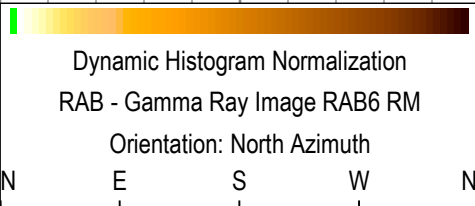
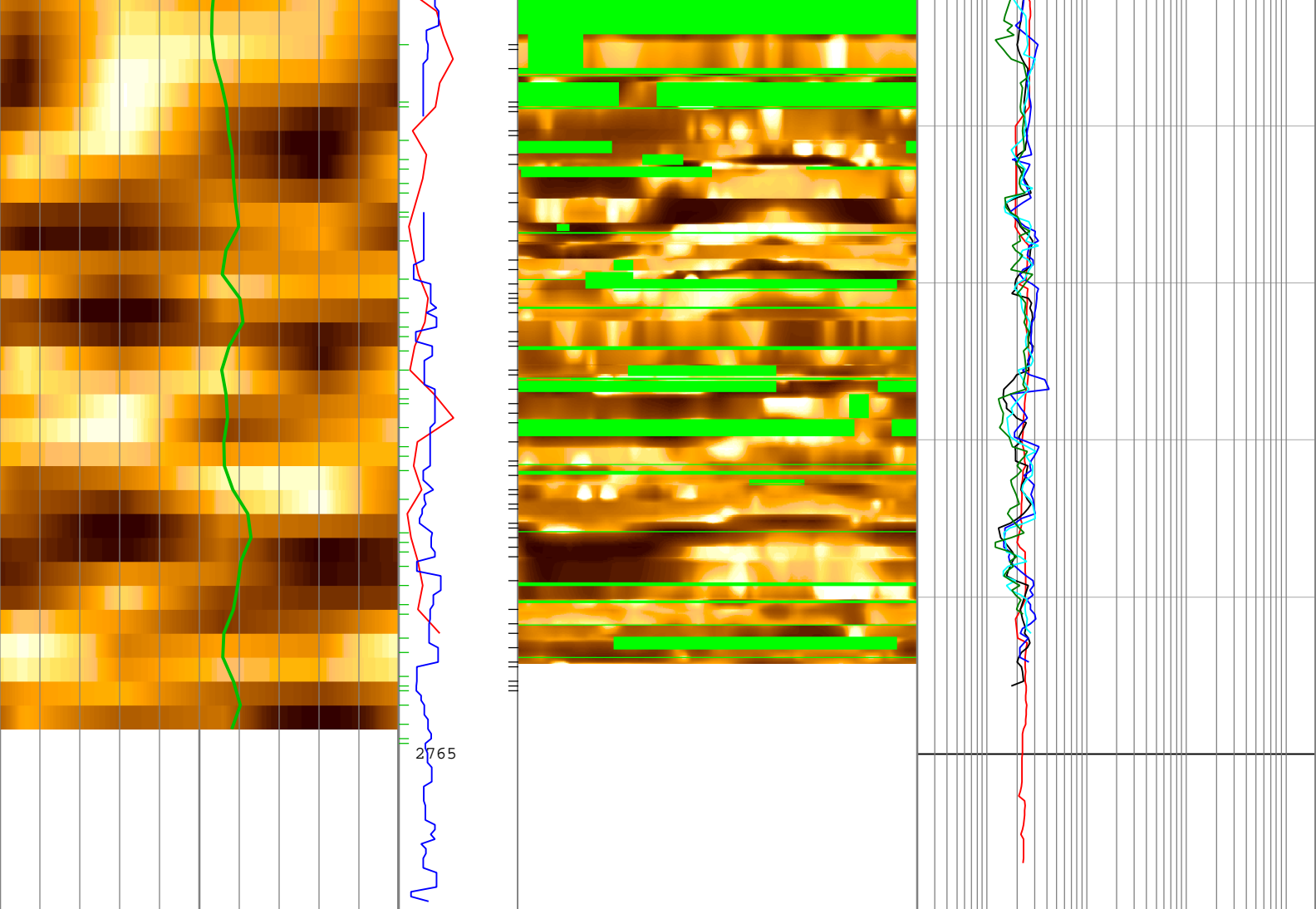












┆TICKS\_RING - Ring Sample Tick Marks RAB6 RM

┆TICKS\_GR - Gamma Ray Tick Marks RAB6 RM

Description: GVR GR Image, Button Image, Resistivity Format: Log ( FINAL GVR LOG 2 ) Index Scale: 1:40 Index Unit: m Index Type: Measured Depth  
 Creation Date: 29-Dec-2017 22:44:01

## Channel Processing Parameters

### Run 1: Parameters

| Parameter | Description                            | Tool       | Value           | Unit |
|-----------|--|------------|-----------------|------|
| BHK       | Drilling Fluid Potassium Concentration | Borehole   | 0               | %    |
| BHT       | Bottom Hole Temperature                | Borehole   | 5               | degC |
| BS        | Bit Size                               | DNMSESSION | 8.5             | in   |
| DEPTH_SEL | Depth Selection Parameter              | DNMSESSION | Driller's Depth |      |

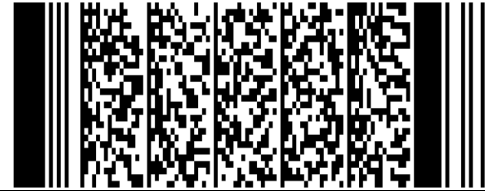
|               |   |          |          |       |
|---------------|---|----------|----------|-------|
| DFD           | Drilling Fluid Density                                  | Borehole | 1.03     | g/cm3 |
| DFT_CATEGORY  | Drilling Fluid Type                                     | Borehole | Water    |       |
| GRSE_RM       | Generalized Mud Resistivity Selection for Recorded Mode | Borehole | REMS(RM) |       |
| GTSE_RM       | Generalized Temperature Selection for Recorded Mode     | Borehole | DHAT(RM) |       |
| IMG_INT_SCANS | Maximum Number of Image Scans to Interpolate Over       | RAB6     | 1        |       |
| IMG_UPSAMPLE  | Upsample Resistivity Images to 224 Bins                 | RAB6     | Yes      |       |
| MST           | Mud Sample Temperature                                  | Borehole | 23.89    | degC  |
| RMS           | Resistivity of Mud Sample                               | Borehole | 0.2      | ohm.m |
| TEMP_SEL_RAB  | RAB Temperature Selection                               | RAB6     | Tool     |       |

## Tool Control Parameters

### Run 1: Parameters

| Parameter | Description  | Tool       | Value | Unit |
|-----------|--|------------|-------|------|
| OFFBTM_TH | Threshold for deciding whether the bit is off bottom | DNMSESSION | 0.3   | m    |

**Company:** IODP  
**Well:** U1518A  
**Field:** HSM-15A  
**Rig Name:** Joides Resolution  
**Expedition:** 372  
**Country:** New Zealand



**Schlumberger**

geoVISION Image Service  
 1:40 Measured Depth  
 Recorded Mode Data