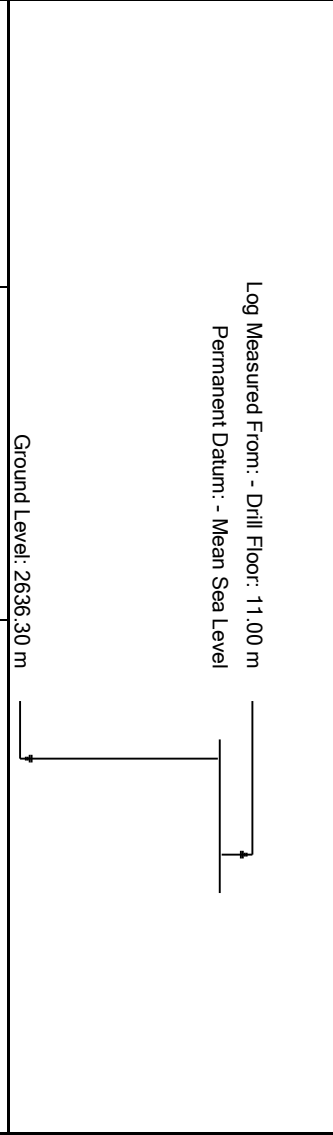


**geoVISION Resistivity
1:240 Measured Depth
Recorded Mode Data**



Company: IODP
Well: U1518B
Field: HSM-15A
Rig Name: Joides Resolution
Expedition: 372
Country: New Zealand

Latitude: 38° 51' 32.202" S **UWID:**
Longitude: 178° 53' 45.618" E **Rig Name:** Joides Resolution
Block: EXP372 **Rig Type:** Drill Ship
FL1:
FL2:



Acquisition Dates:	20-Dec-2017 -- 23-Dec-2017	Other Services:	
Log Interval:	2730.00(m) -- 3247.00(m)	SonicScope	
Index Types:	Measured Depth	proVISION Plus	
Index Scales:	1:240	geoVISION Images	
Depth Source:	Driller's Depth	StethoScope	
Depth Sensor:	DES		
Print Type:	Final		
Spud Date:	21-Dec-2017		

Disclaimer

THE USE OF AND RELIANCE UPON THIS RECORDED-DATA BY THE HEREIN NAMED COMPANY (AND ANY OF ITS AFFILIATES, PARTNERS, REPRESENTATIVES, AGENTS, CONSULTANTS AND EMPLOYEES) IS SUBJECT TO THE TERMS AND CONDITIONS AGREED UPON BETWEEN SCHLUMBERGER AND THE COMPANY, INCLUDING: (a) RESTRICTIONS ON USE OF THE RECORDED-DATA; (b) DISCLAIMERS AND WAIVERS OF WARRANTIES AND REPRESENTATIONS REGARDING COMPANY'S USE AND RELIANCE UPON THE RECORDED-DATA; AND (c) CUSTOMER'S FULL AND SOLE RESPONSIBILITY FOR ANY INFERENCE DRAWN OR DECISION MADE IN CONNECTION WITH THE USE OF THIS RECORDED-DATA.

Run 1

FINAL GVR LOG 1

Software Version

Acquisition System		Version	
Maxwell 2017 SP3		7.3.92069.3100	
Computation	Description	Version	
RAB6Res	RAB6 Resistivity Computation Package for both Real-time and Recorded Mode	7.3.92069.3100	
RAB6GR	RAB6 Gamma Ray Computation Package for both Real-time and Recorded Mode	7.3.92069.3100	
SoftwareVersion_Tool	SoftwareVersion_System Version	SoftwareVersion_Loaded Version	
HSPM	20.3c.062	7.3.92069.3100	
Tool Elements	Description	Software Version	Firmware Version
DRILLING_SURFACE	DRILLING_SURFACE	7.3.92069.3100	
RBEC	Electronics Chassis Assembly for RAB6-C	7.3.92069.3100	V8.6B

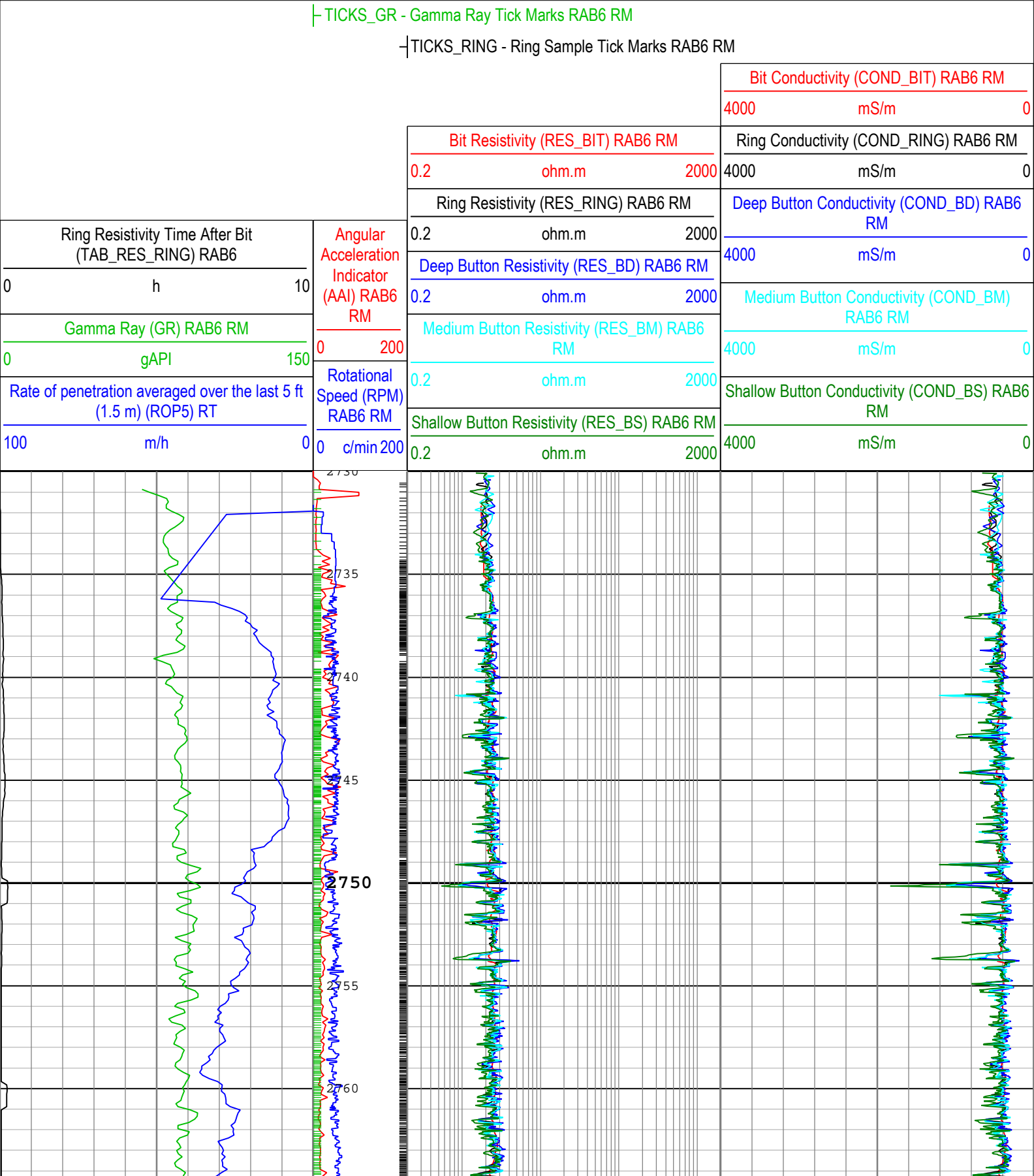
Pass Summary

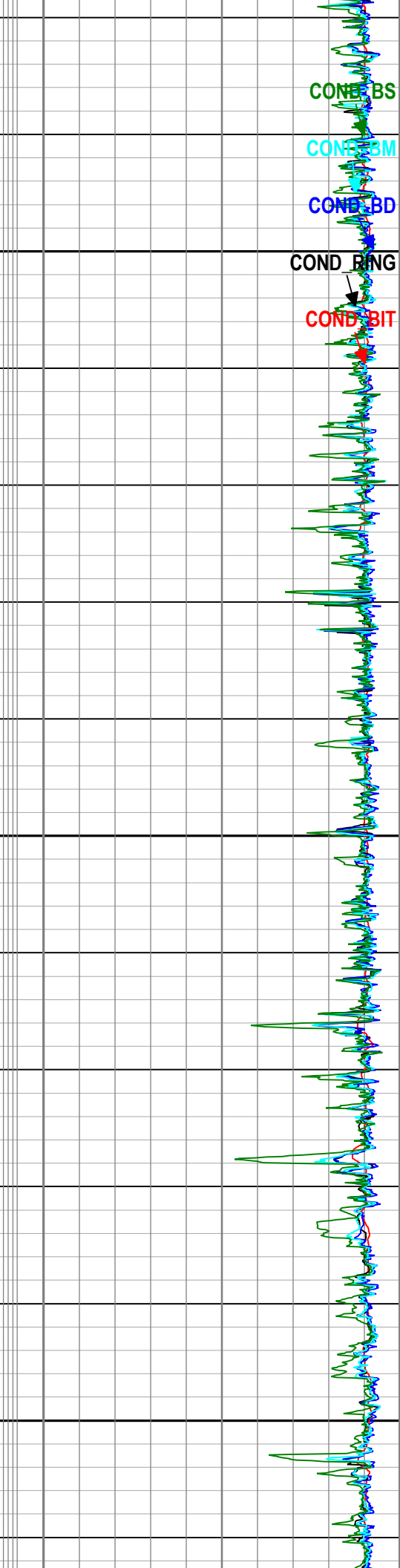
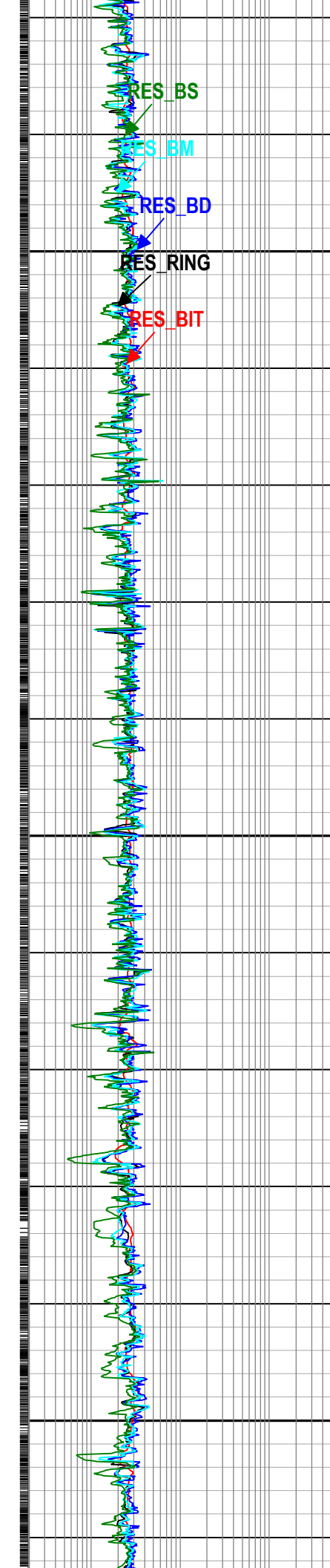
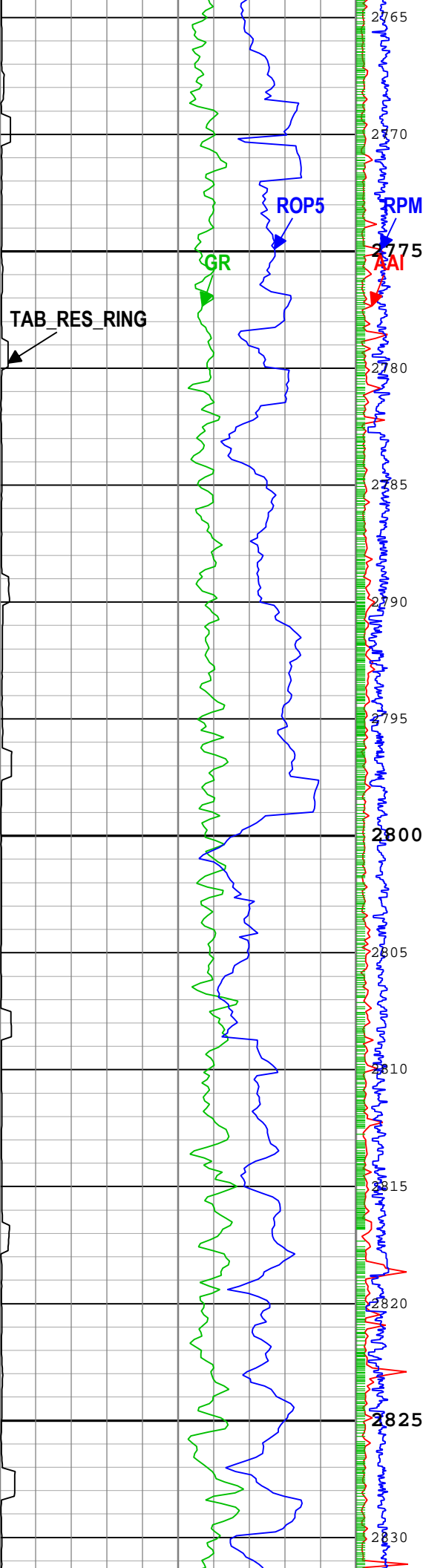
Run Name	Pass Objective	Direction	Top	Bottom	Start	Stop	Include Parallel Data
Run 1	Drilling	Down	2649.70 m	3247.31 m	20-Dec-2017 10:51:33 PM	23-Dec-2017 3:06:27 AM	Yes

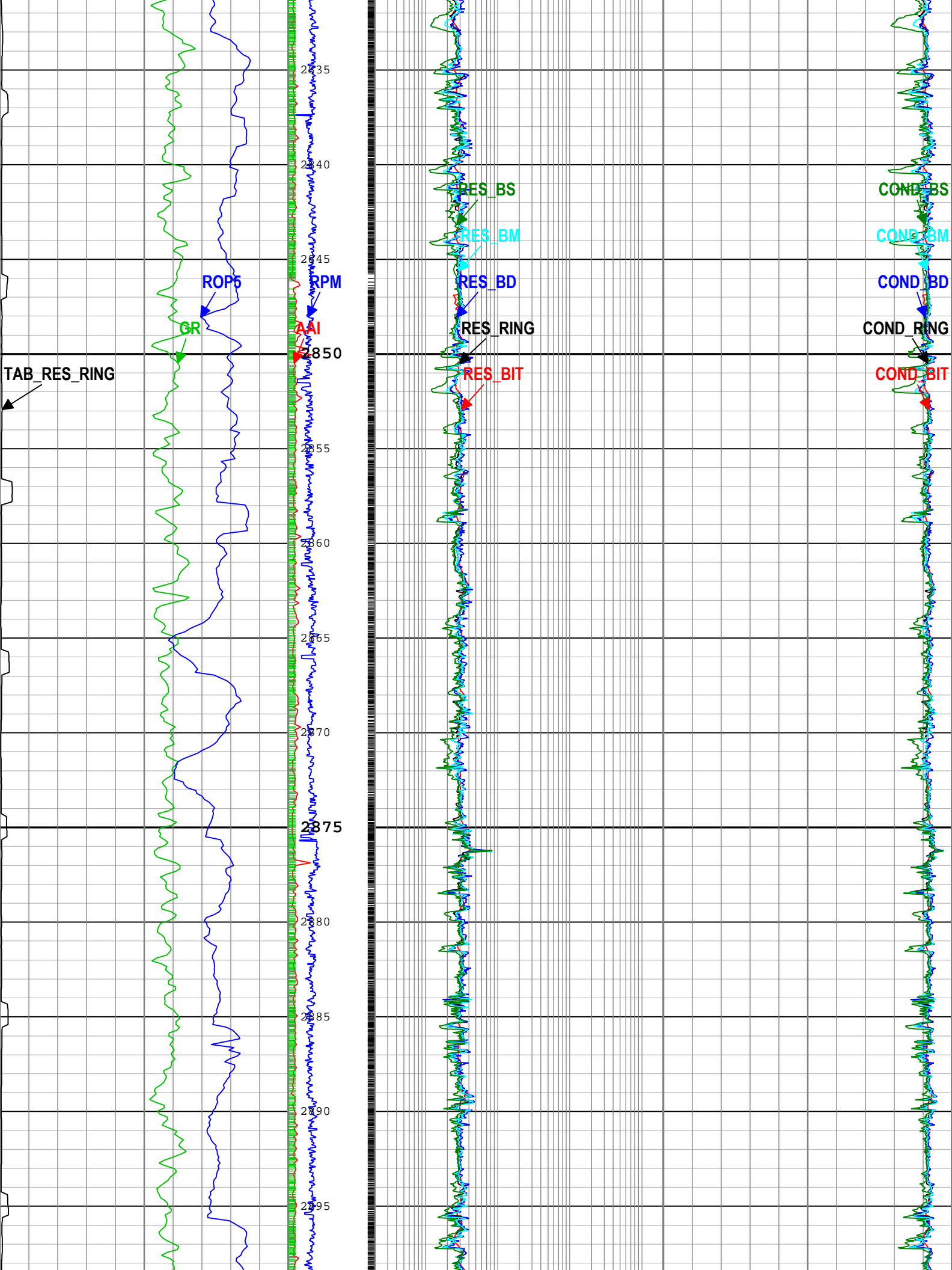
All depths are referenced to toolstring zero

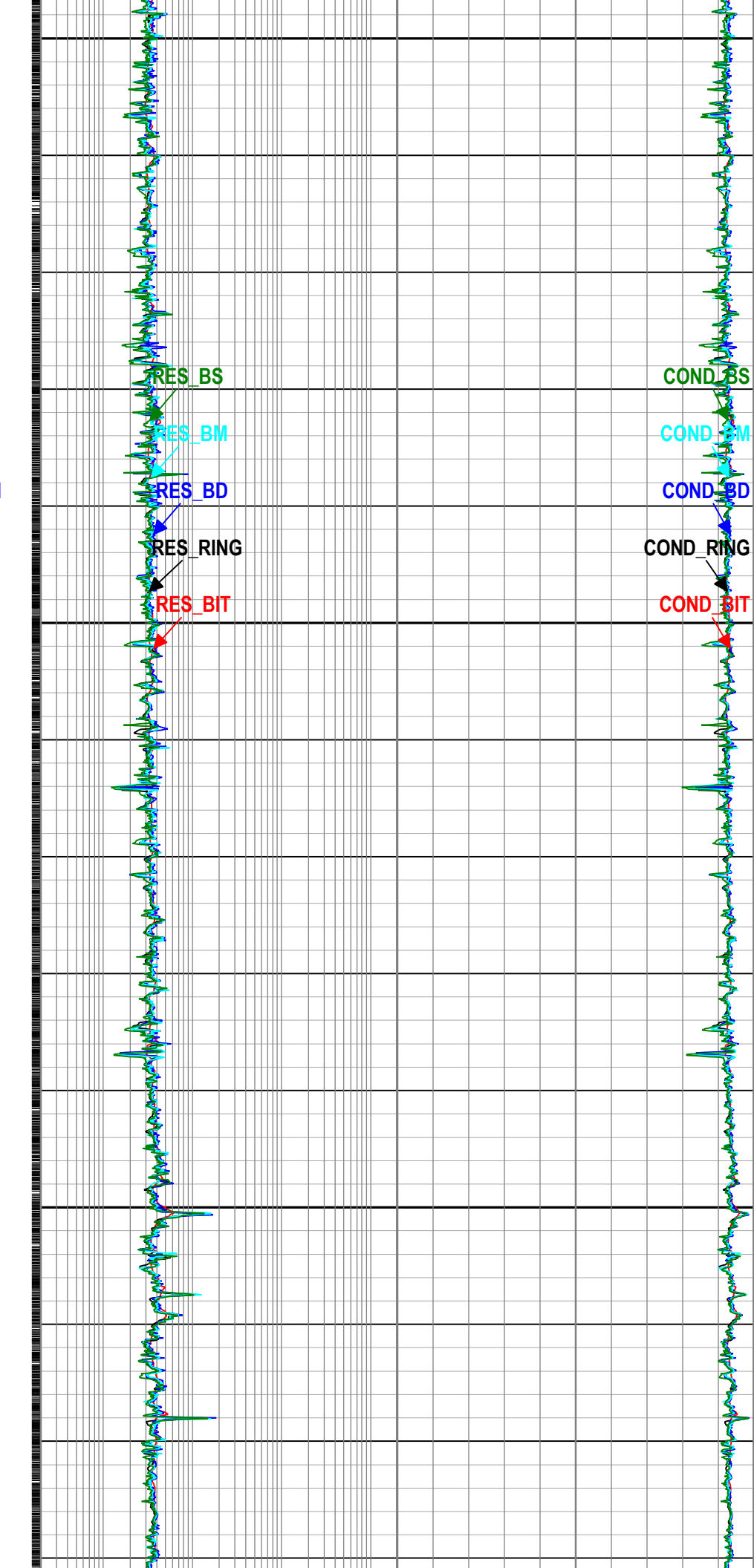
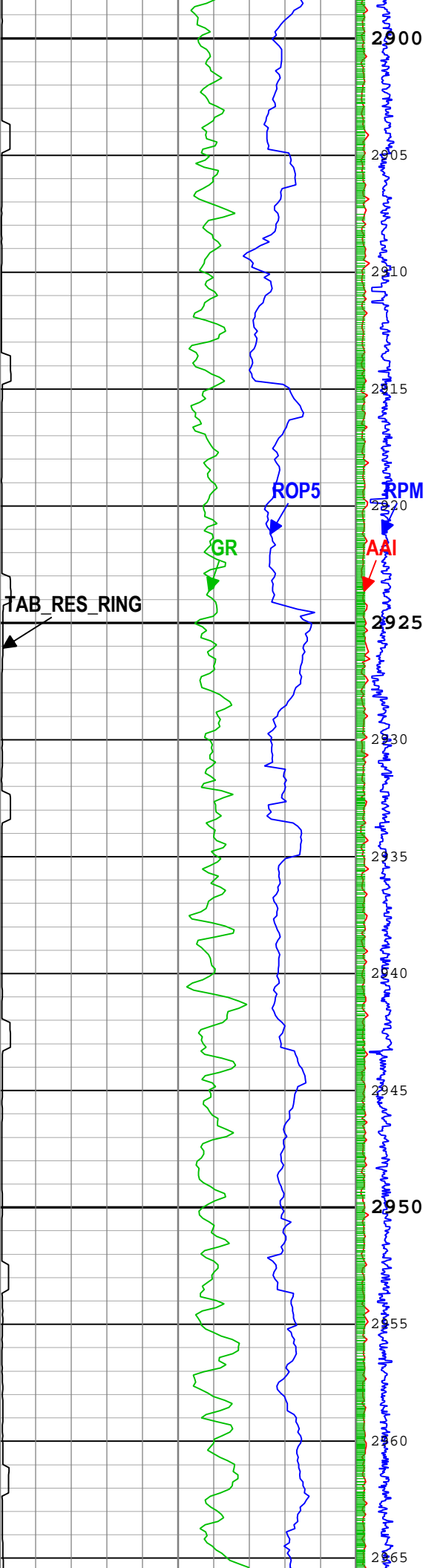
Log	Company: IODP	Well: U1518B
	Run 1: Drilling: S049	

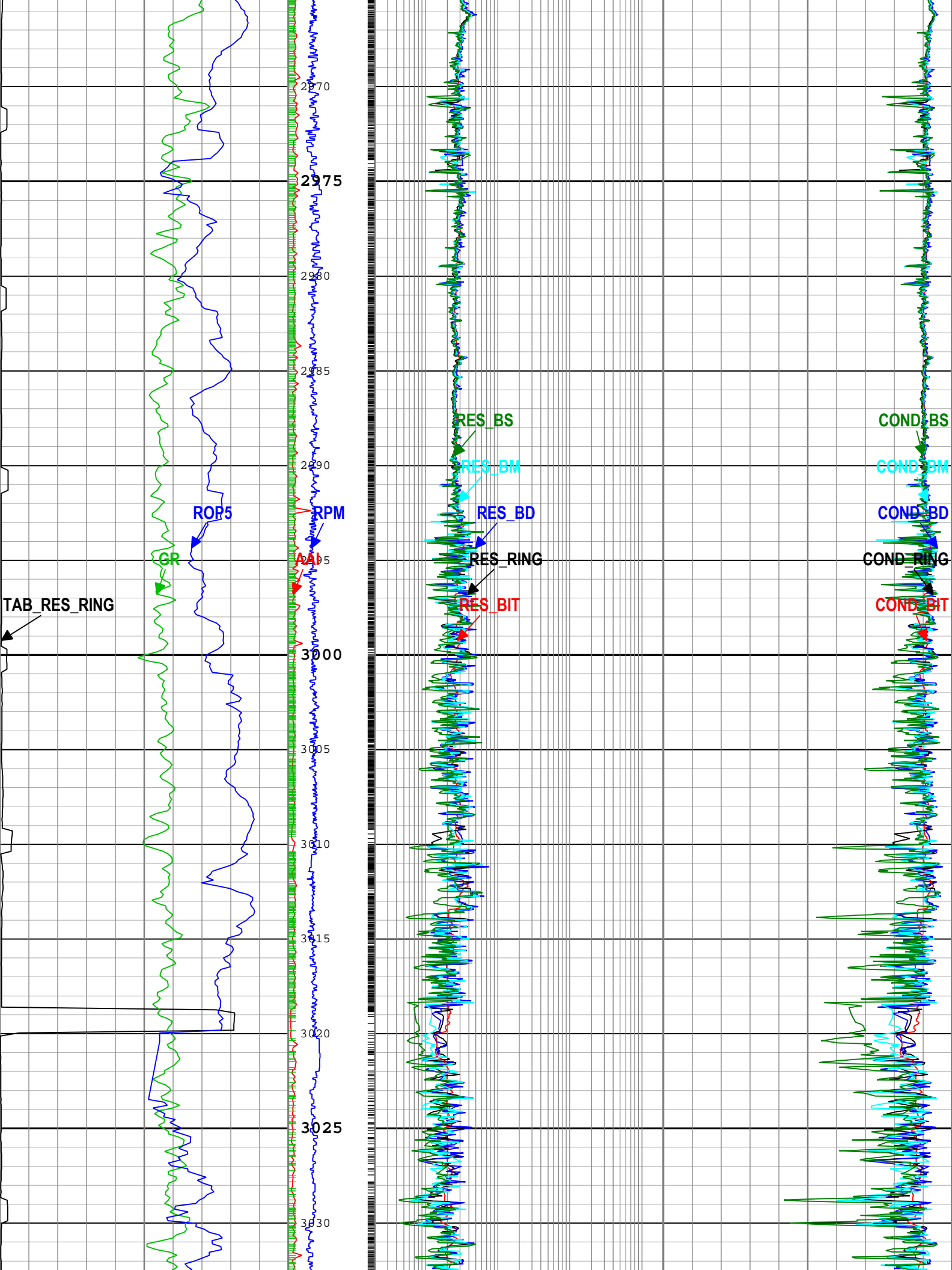
Description: GVR Resistivity Conductivity Format: Log (FINAL GVR LOG 1) Index Scale: 1:240 Index Unit: m Index Type: Measured Depth Creation Date: 30-Dec-2017 00:06:04

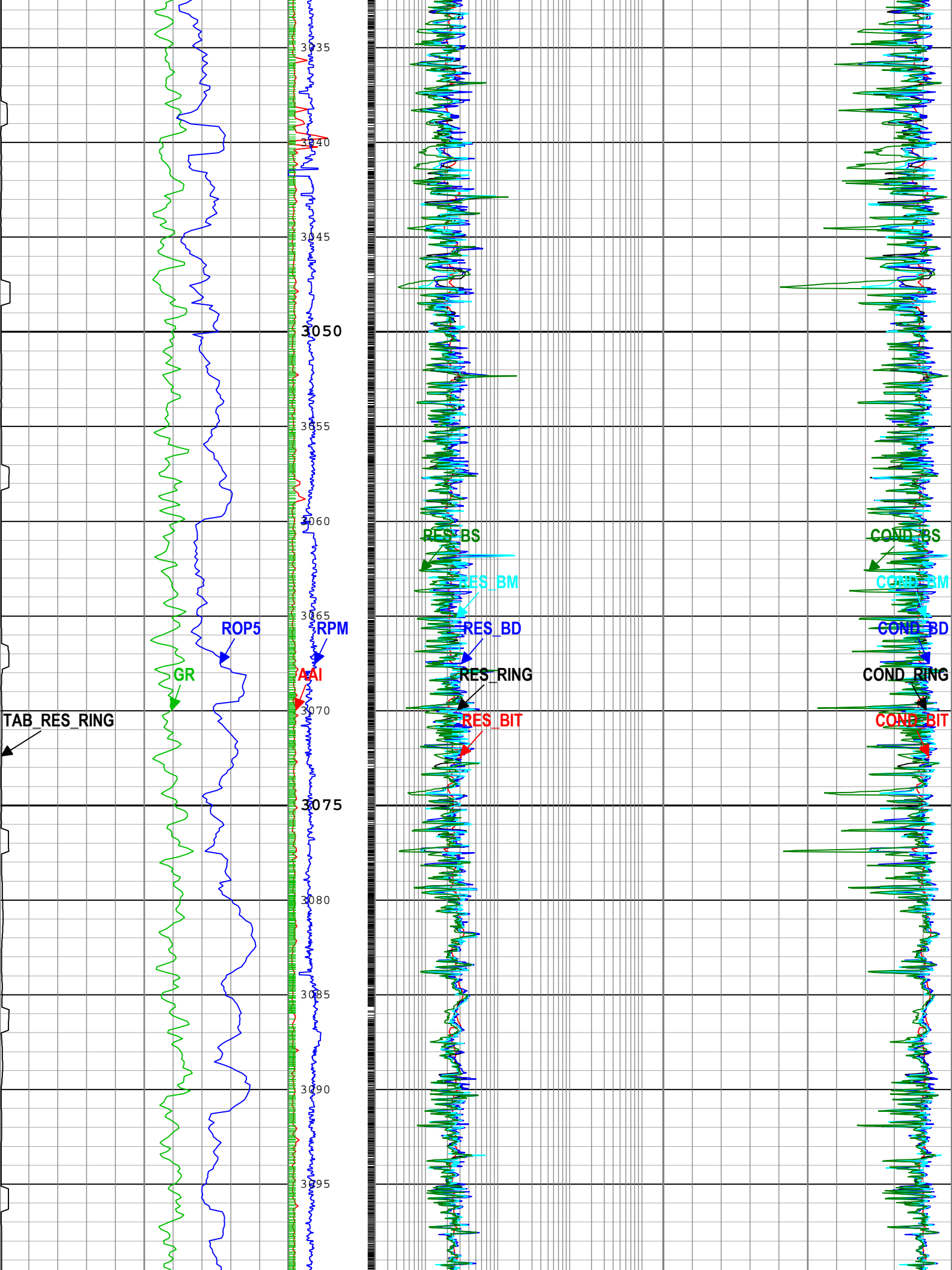


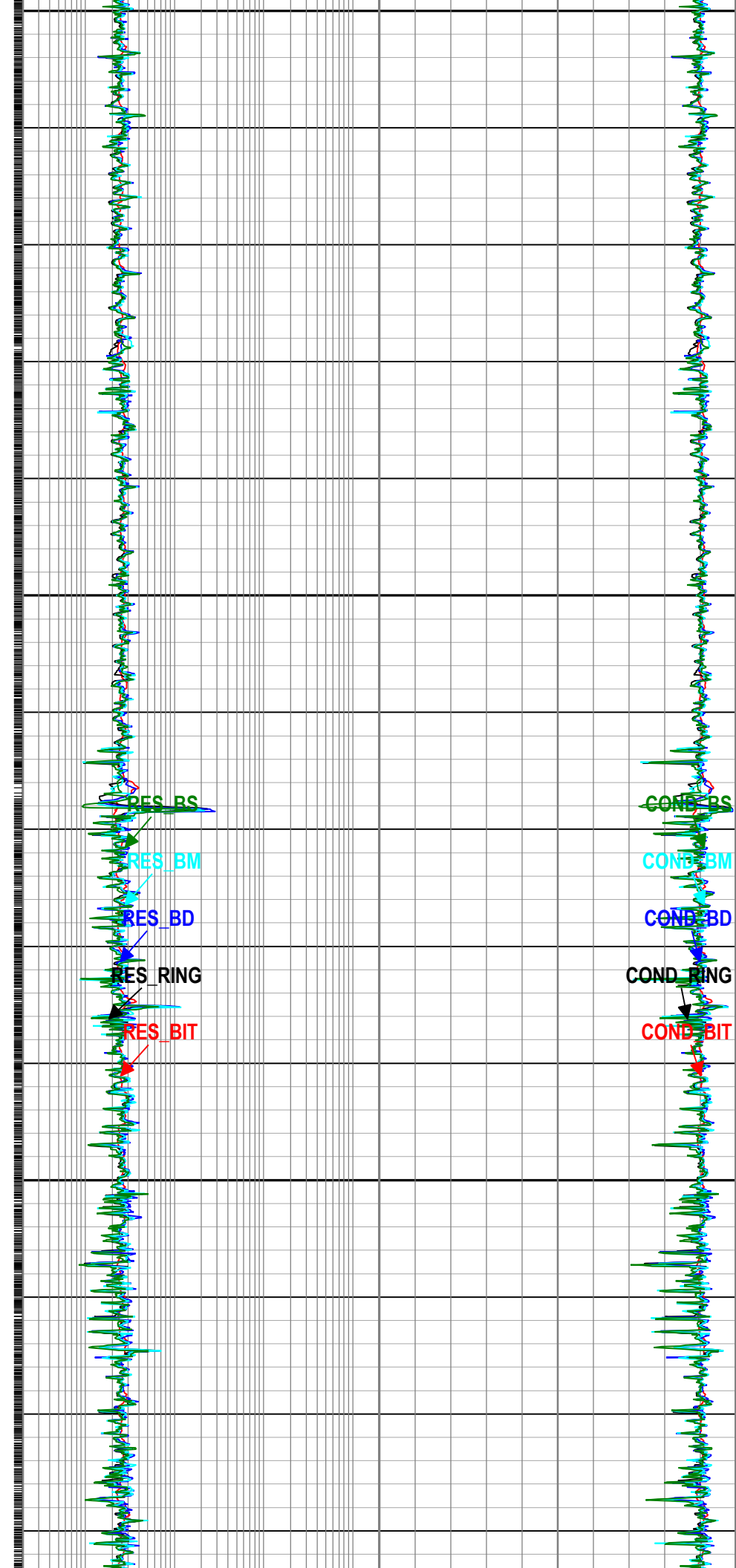
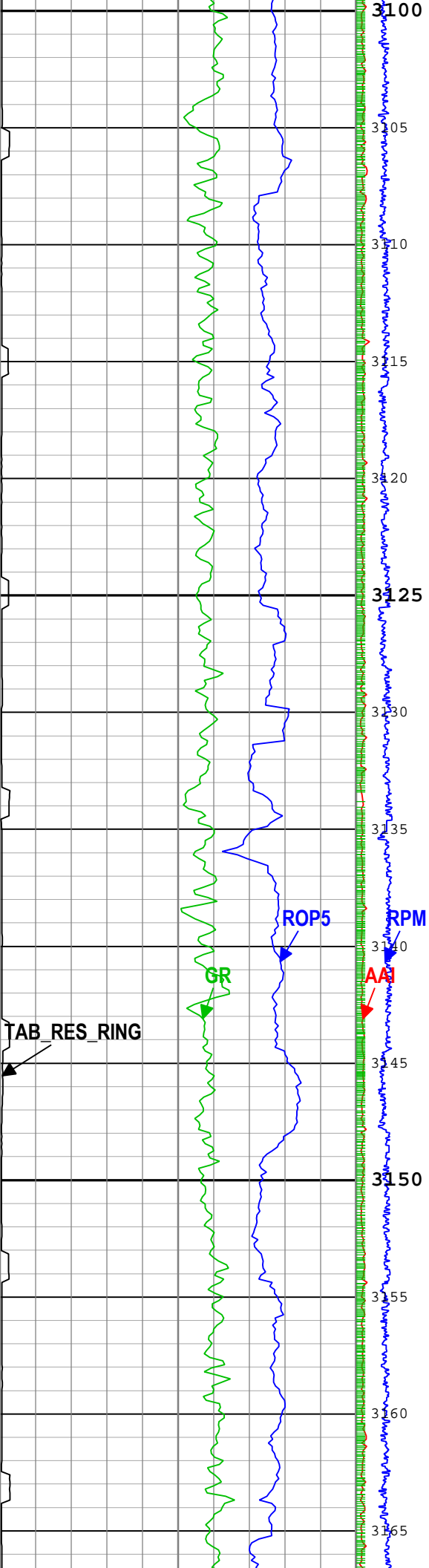


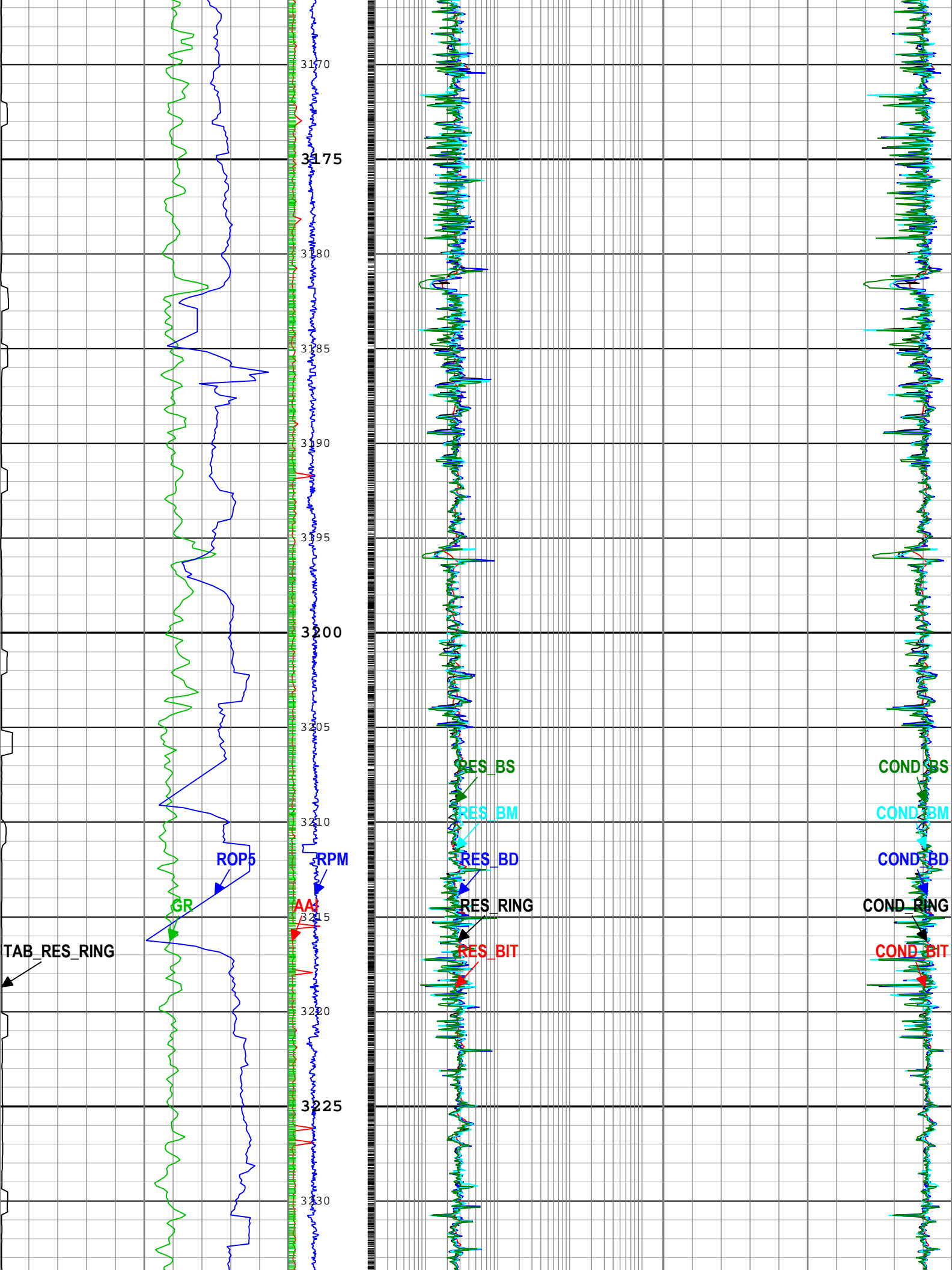


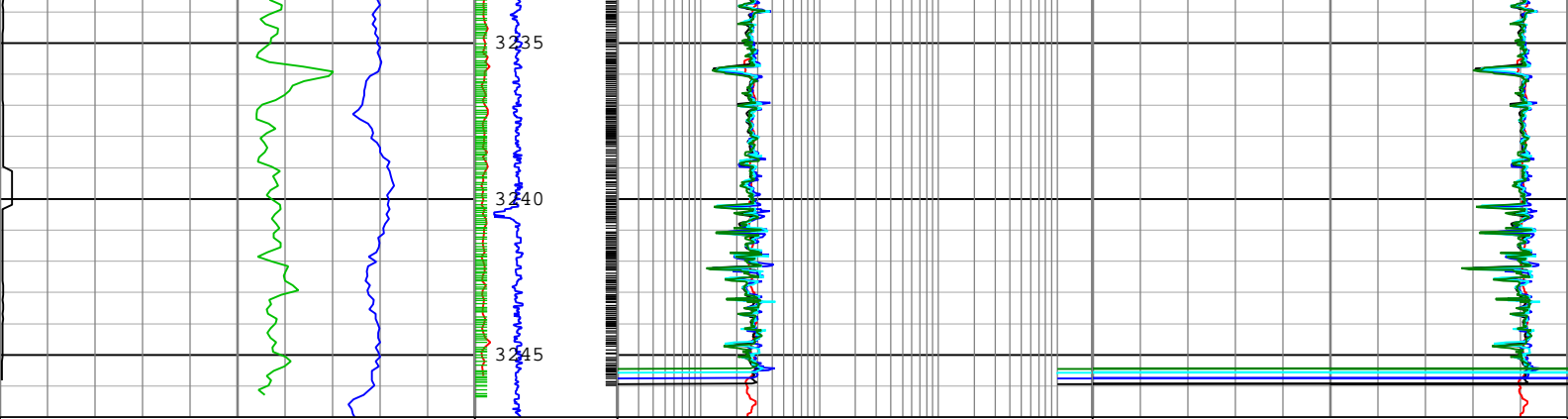












Ring Resistivity Time After Bit (TAB_RES_RING) RAB6 0 h 10	Angular Acceleration Indicator (AAI) RAB6 RM 0 200	Bit Resistivity (RES_BIT) RAB6 RM 0.2 ohm.m 2000	Bit Conductivity (COND_BIT) RAB6 RM 4000 mS/m 0
Gamma Ray (GR) RAB6 RM 0 gAPI 150		Ring Resistivity (RES_RING) RAB6 RM 0.2 ohm.m 2000	Ring Conductivity (COND_RING) RAB6 RM 4000 mS/m 0
Rate of penetration averaged over the last 5 ft (1.5 m) (ROP5) RT 100 m/h 0	Rotational Speed (RPM) RAB6 RM 0 c/min 200	Deep Button Resistivity (RES_BD) RAB6 RM 0.2 ohm.m 2000	Deep Button Conductivity (COND_BD) RAB6 RM 4000 mS/m 0
		Medium Button Resistivity (RES_BM) RAB6 RM 0.2 ohm.m 2000	Medium Button Conductivity (COND_BM) RAB6 RM 4000 mS/m 0
		Shallow Button Resistivity (RES_BS) RAB6 RM 0.2 ohm.m 2000	Shallow Button Conductivity (COND_BS) RAB6 RM 4000 mS/m 0

┆ TICKS_RING - Ring Sample Tick Marks RAB6 RM

┆ TICKS_GR - Gamma Ray Tick Marks RAB6 RM

Description: GVR Resistivity Conductivity Format: Log (FINAL GVR LOG 1) Index Scale: 1:240 Index Unit: m Index Type: Measured Depth Creation Date: 30-Dec-2017 00:06:04

Channel Processing Parameters

Run 1: Parameters

Parameter	Description	Tool	Value	Unit
BHK	Drilling Fluid Potassium Concentration	Borehole	0	%
BHT	Bottom Hole Temperature	Borehole	5	degC
BS	Bit Size	DNMSESSION	8.5	in
DFD	Drilling Fluid Density	Borehole	8.6	lbm/gal
DFT_CATEGORY	Drilling Fluid Type	Borehole	Water	
GRSE_RM	Generalized Mud Resistivity Selection for Recorded Mode	Borehole	REMS(RM)	
GTSE_RM	Generalized Temperature Selection for Recorded Mode	Borehole	DHAT(RM)	
MST	Mud Sample Temperature	Borehole	23.89	degC
RMS	Resistivity of Mud Sample	Borehole	0.2	ohm.m
TEMP_SEL_RAB	RAB Temperature Selection	RAB6	Tool	

Tool Control Parameters

Company:	IODP
Well:	U1518B

Field: HSM-15A
Rig Name: Joides Resolution
Expedition: 372
Country: New Zealand



geoVISION Resistivity
1:240 Measured Depth
Recorded Mode Data