

HSM-15A Hole B
1:200 Measured Depth
Recorded Mode Data



Company: IODP

Well: HSM-15A_B

Field:

Country:

State:

Section:

Township:

Range:

UWID:

Rig Name:

Rig Type:

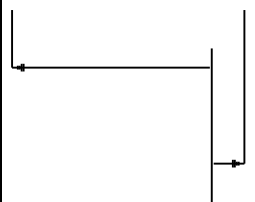
FL:

FL1:

FL2:

Log Measured From: - Drill Floor: 11.00 m
 Permanent Datum: - Mean Sea Level

Ground Level: 2637.00 m



Acquisition Dates: 20-Dec-2017 -- 23-Dec-2017

Other Services:

Log Interval: 2700.00(m) -- 3247.31(m)

Index Types: Measured Depth

Index Scales: 1:200

Depth Source: Driller's Depth

Depth Sensor: DES

Print Type: Field

Spud Date:



Disclaimer

THE USE OF AND RELIANCE UPON THIS RECORDED-DATA BY THE HEREIN NAMED COMPANY (AND ANY OF ITS AFFILIATES, PARTNERS, REPRESENTATIVES, AGENTS, CONSULTANTS AND EMPLOYEES) IS SUBJECT TO THE TERMS AND CONDITIONS AGREED UPON BETWEEN SCHLUMBERGER AND THE COMPANY, INCLUDING: (a) RESTRICTIONS ON USE OF THE RECORDED-DATA; (b) DISCLAIMERS AND WAIVERS OF WARRANTIES AND REPRESENTATIONS REGARDING COMPANY'S USE AND RELIANCE UPON THE RECORDED-DATA; AND (c) CUSTOMER'S FULL AND SOLE RESPONSIBILITY FOR ANY INFERENCE DRAWN OR DECISION MADE IN CONNECTION WITH THE USE OF THIS RECORDED-DATA.

Run 1

Button Image Comparison

Software Version

Acquisition System		Version	
Maxwell 2017 SP3		7.3.92069.3100	
Computation	Description	Version	
RAB6Res	RAB6 Resistivity Computation Package for both Real-time and Recorded Mode	7.3.92069.3100	
SoftwareVersion_Tool	SoftwareVersion_System Version	SoftwareVersion_Loaded Version	
HSPM	20.3c.062	7.3.92069.3100	
Tool Elements	Description	Software Version	Firmware Version
RBEC	Electronics Chassis Assembly for RAB6-C	7.3.92069.3100	V8.6B

Pass Summary

Run Name	Pass Objective	Direction	Top	Bottom	Start	Stop	Include Parallel Data
Run 1	Drilling	Down	2649.70 m	3247.31 m	20-Dec-2017	23-Dec-2017	Yes

All depths are referenced to toolstring zero

Log

Company: IODP

Well: HSM-15A_B

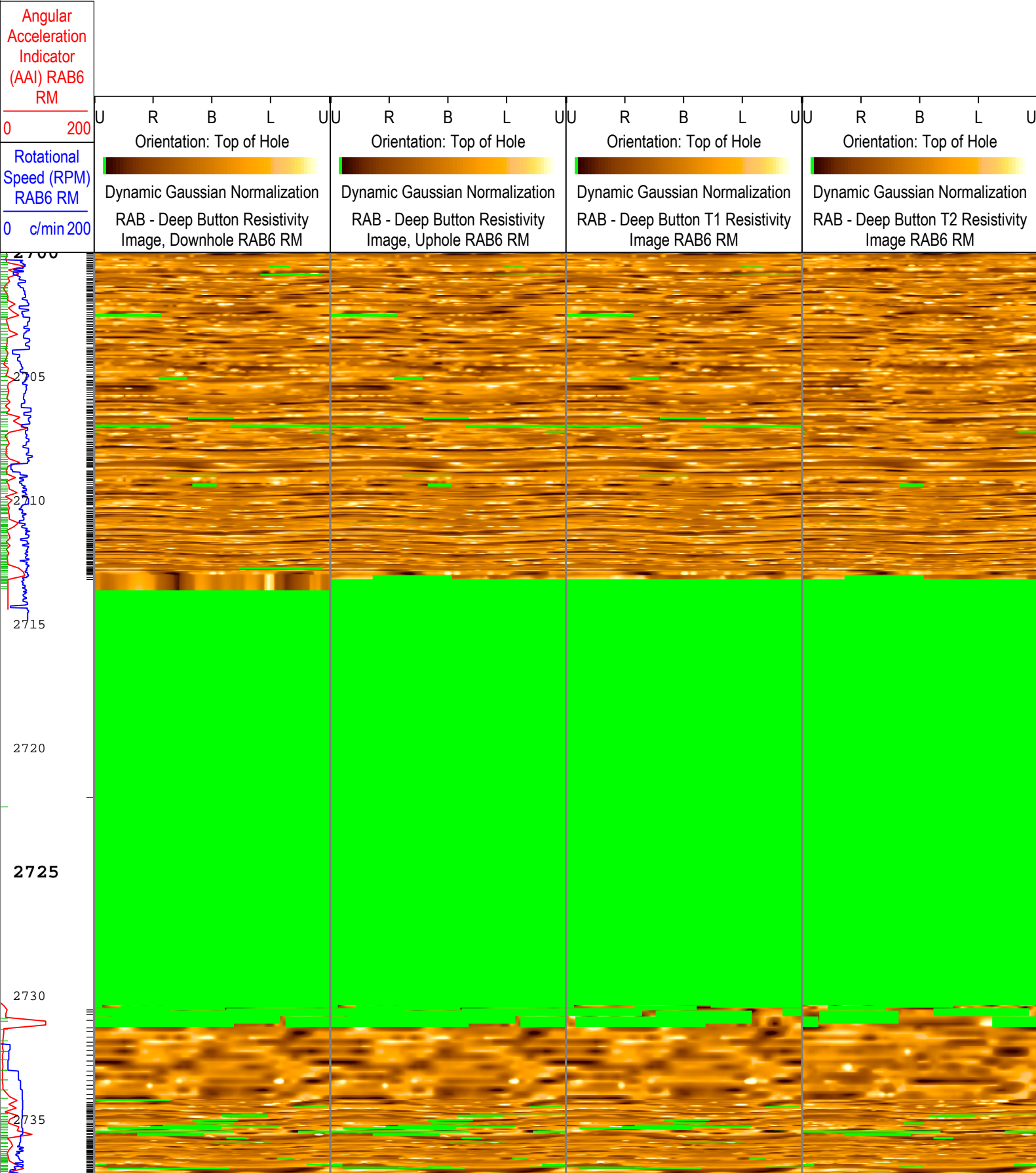
Run 1: Drilling: S043

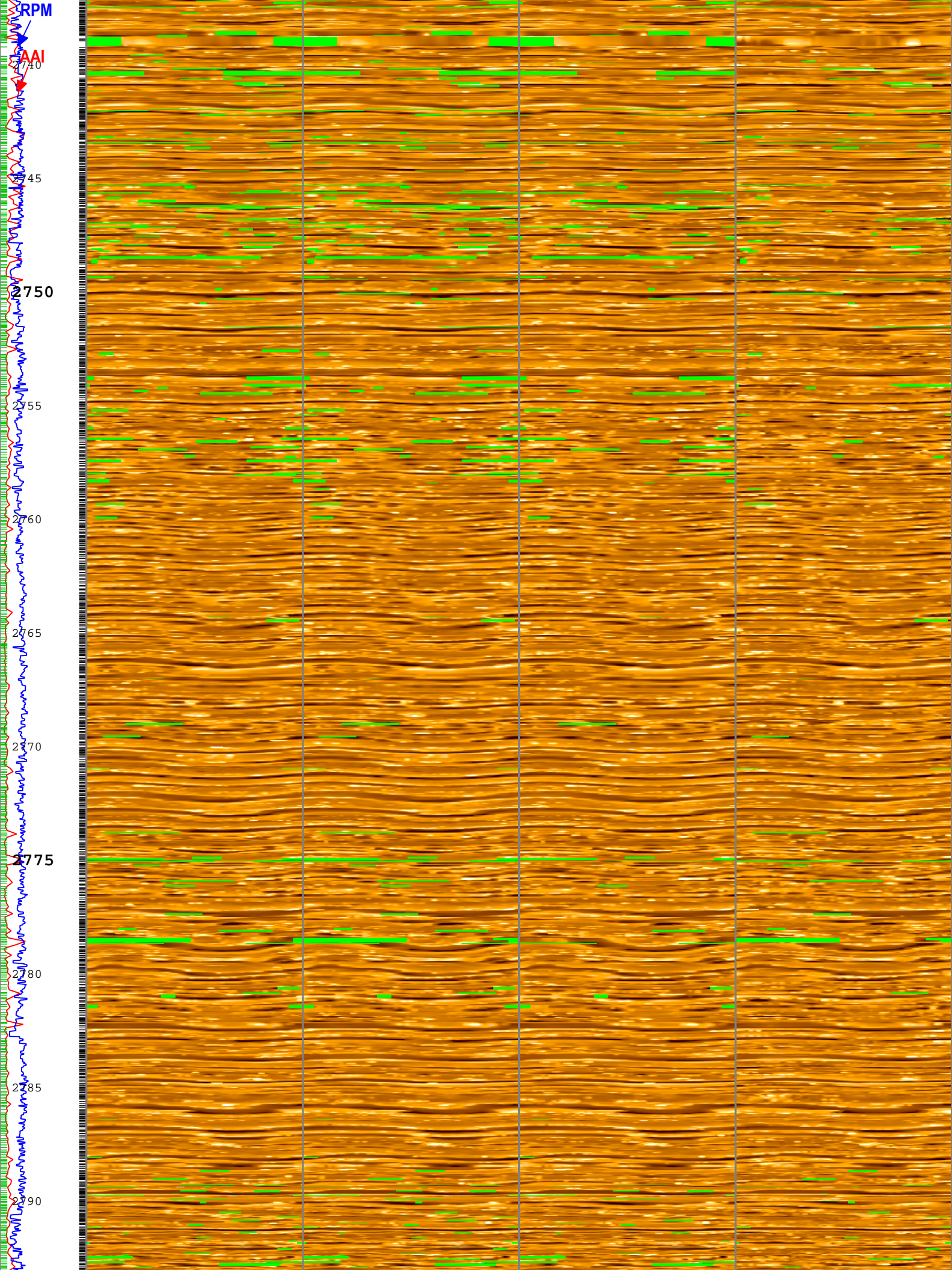
Description: GVR Deep Button Image Comparison Format: Log (GVR Deep Button Image Comparison) Index Scale: 1:200 Index Unit: m Index Type:

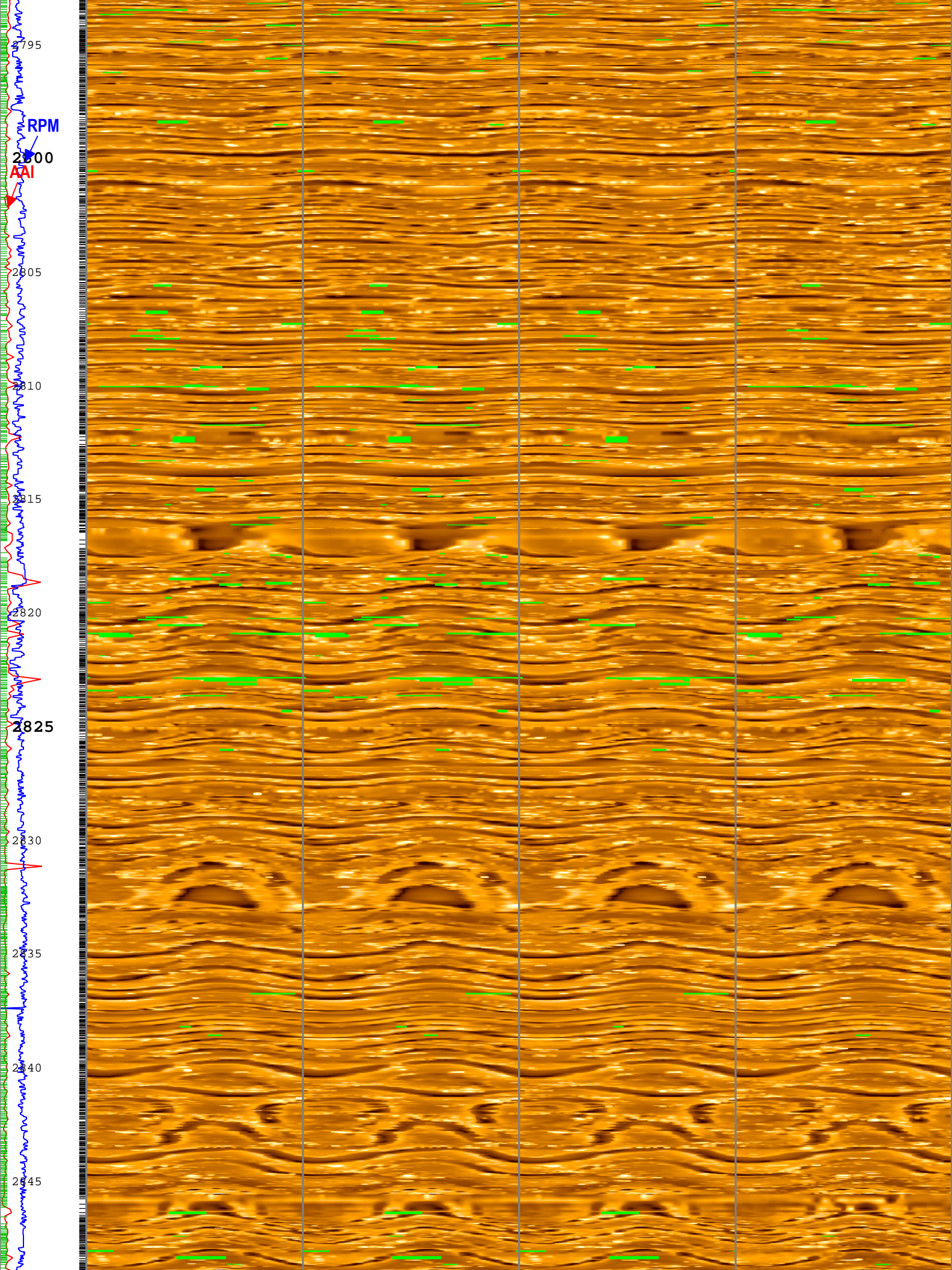
Measured Depth Creation Date: 25-Dec-2017 03:35:54

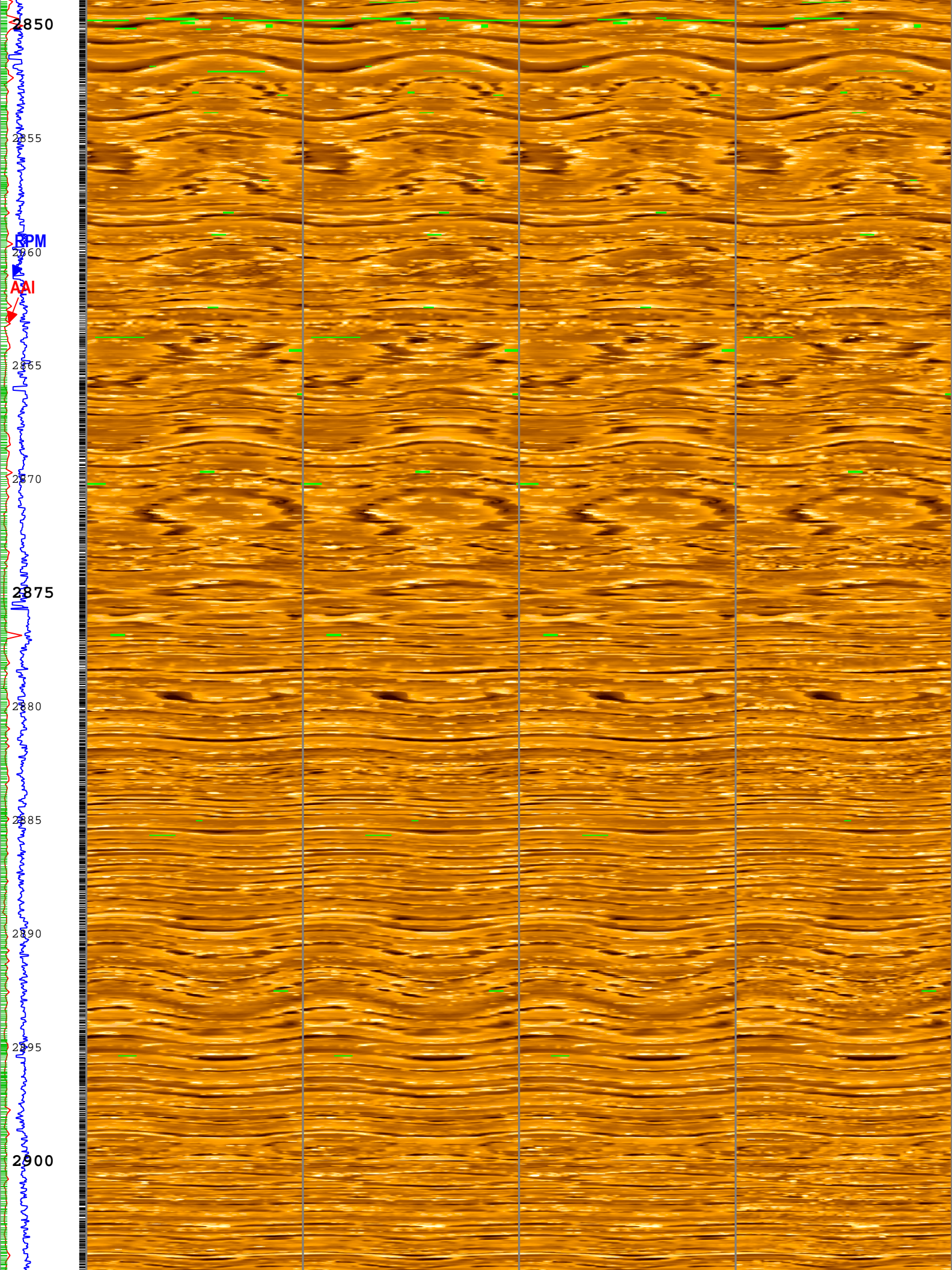
TICKS_GR - Gamma Ray Tick Marks RAB6 RM

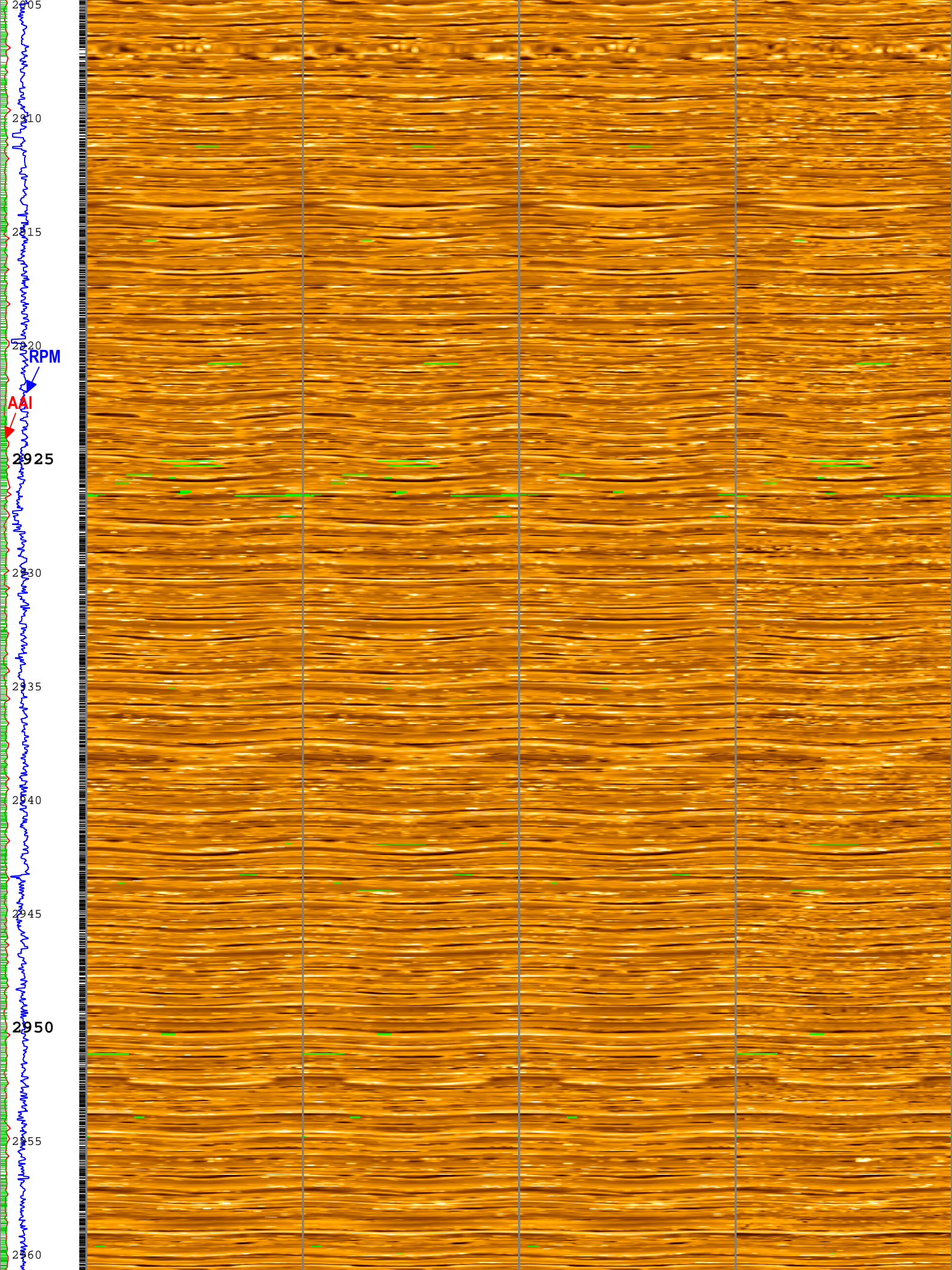
TICKS_RING - Ring Sample Tick Marks RAB6 RM

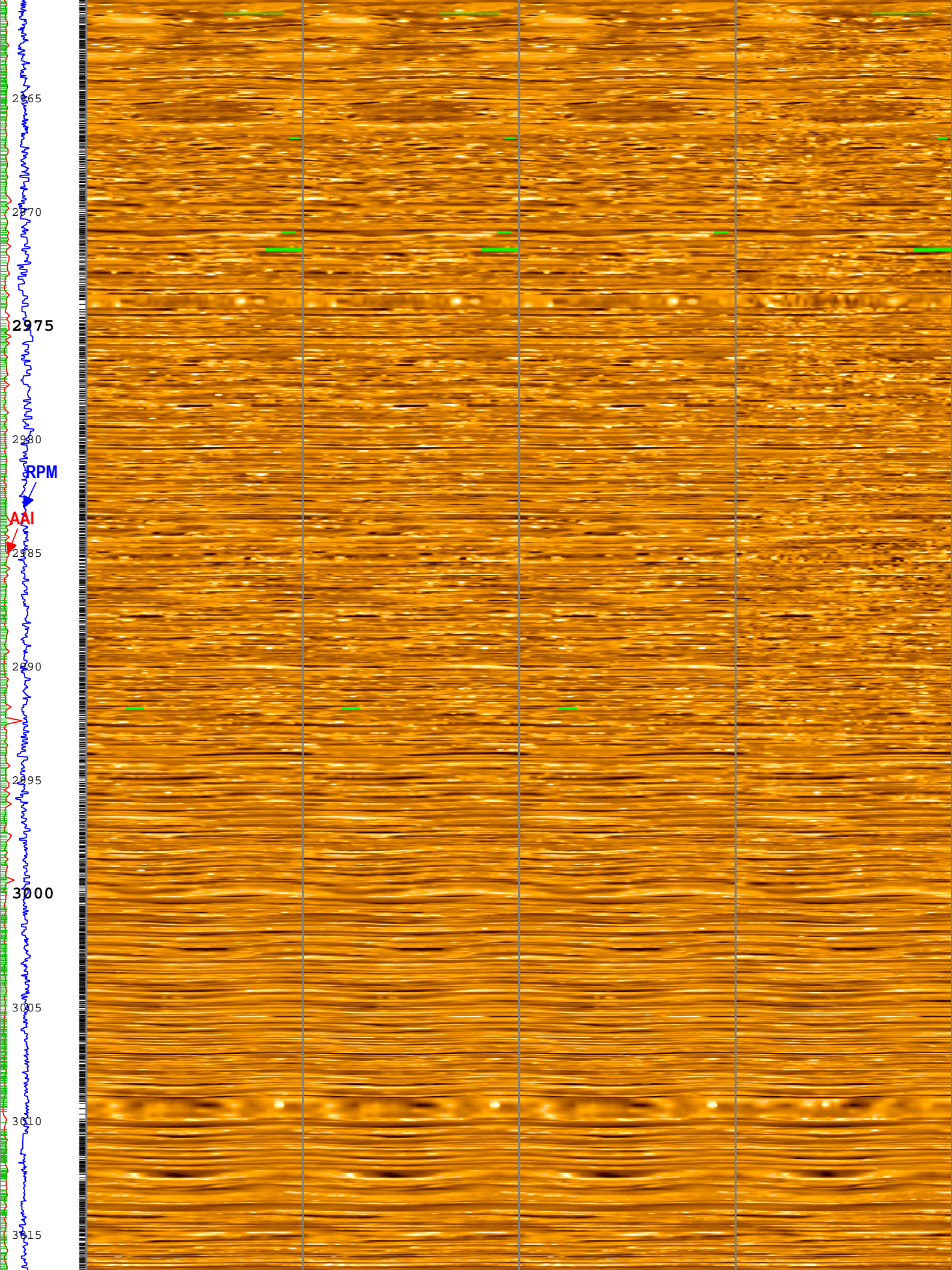


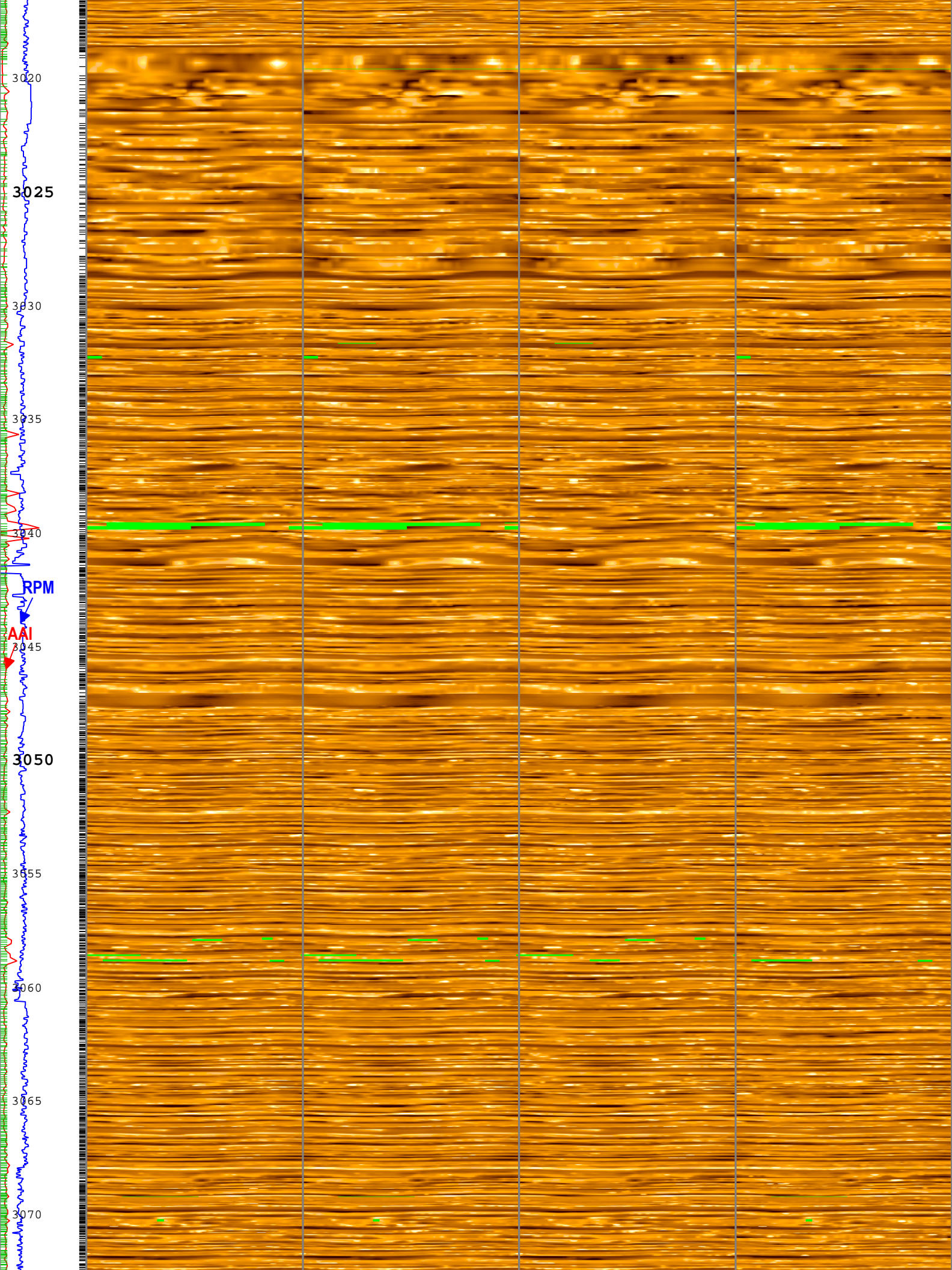


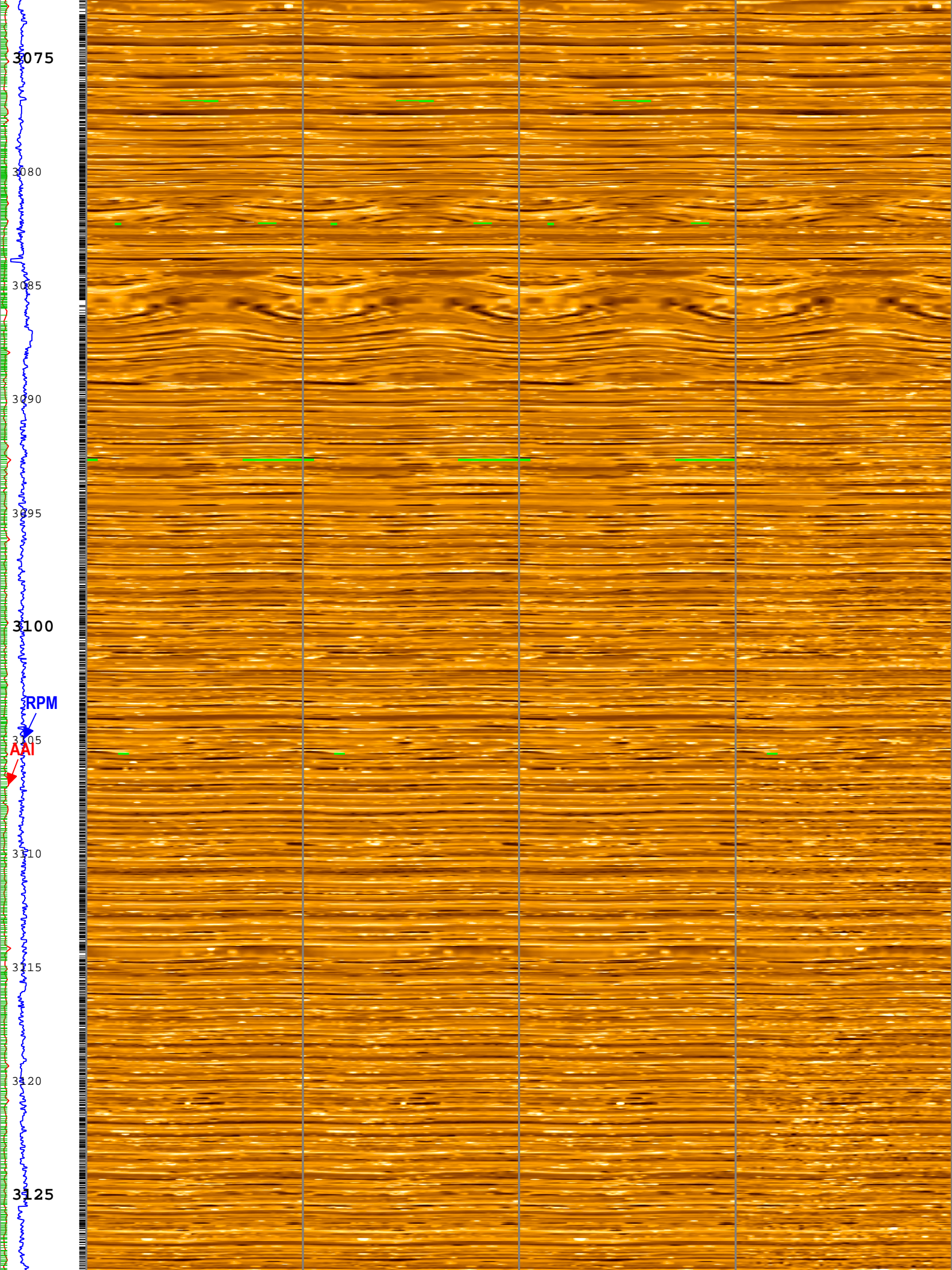


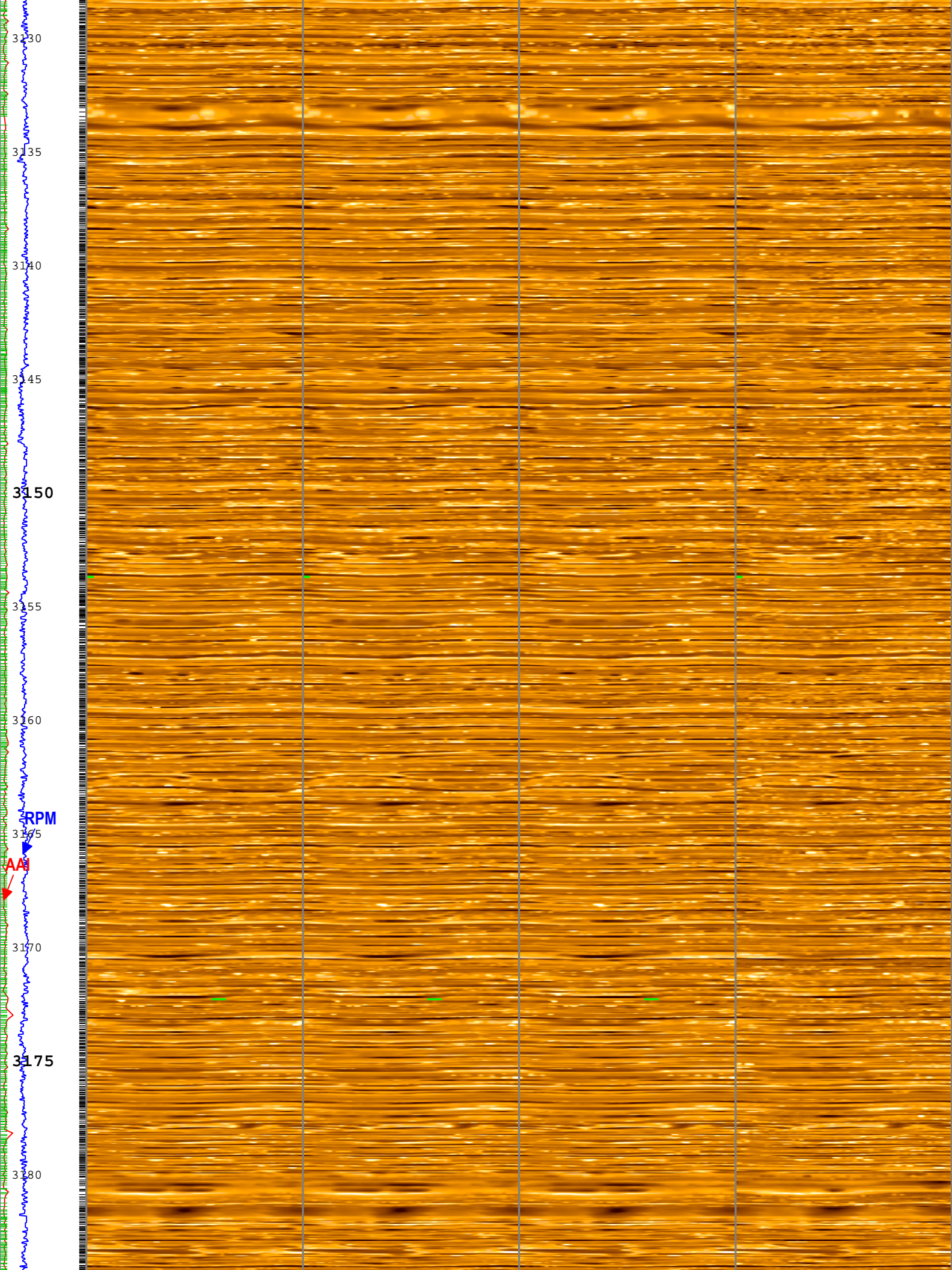


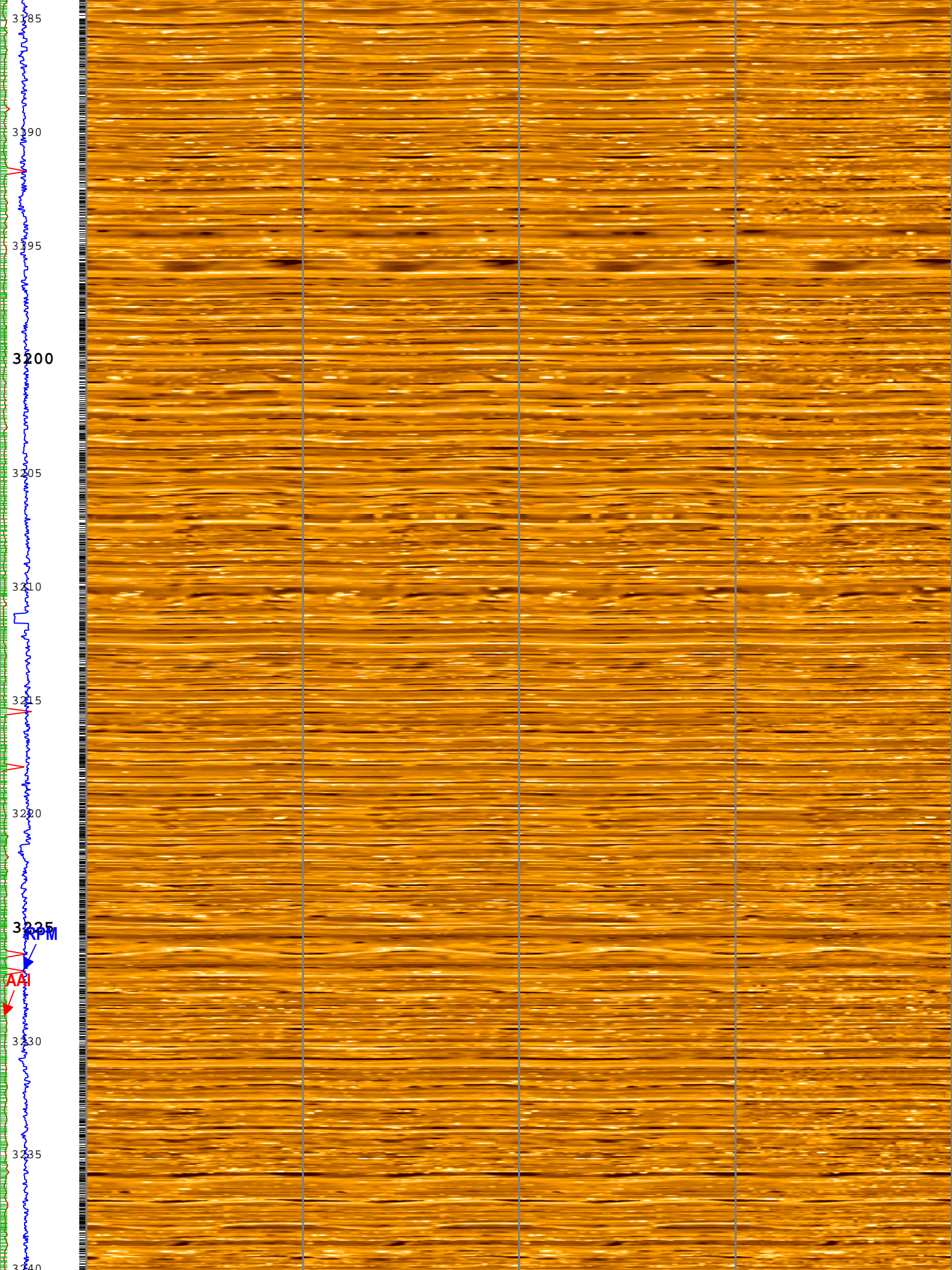


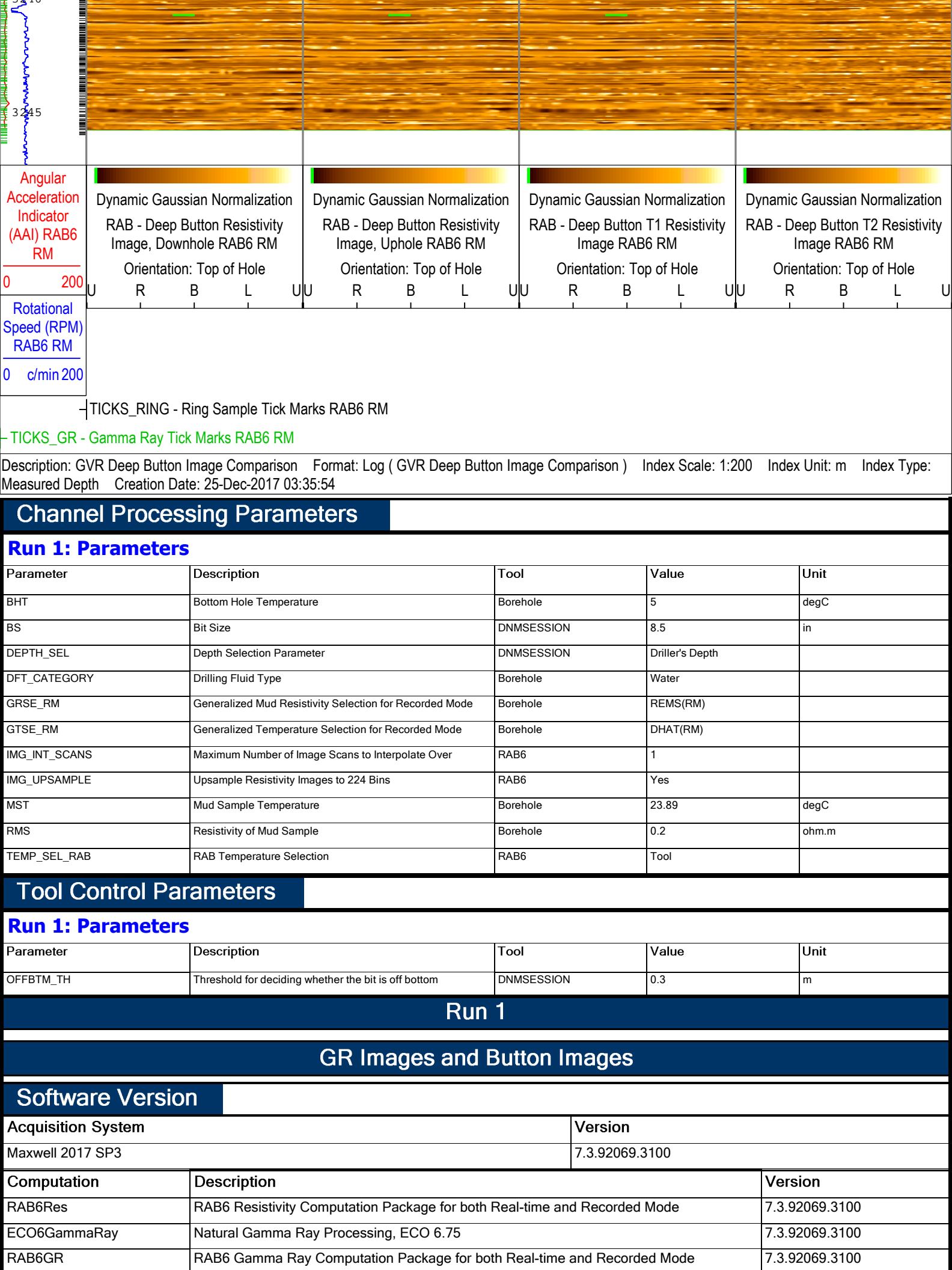












Angular Acceleration Indicator (AAI) RAB6 RM 0 200	Dynamic Gaussian Normalization RAB - Deep Button Resistivity Image, Downhole RAB6 RM Orientation: Top of Hole	Dynamic Gaussian Normalization RAB - Deep Button Resistivity Image, Uphole RAB6 RM Orientation: Top of Hole	Dynamic Gaussian Normalization RAB - Deep Button T1 Resistivity Image RAB6 RM Orientation: Top of Hole	Dynamic Gaussian Normalization RAB - Deep Button T2 Resistivity Image RAB6 RM Orientation: Top of Hole
	U R B L U	U R B L U	U R B L U	U R B L U

Rotational Speed (RPM) RAB6 RM 0 c/min 200
--

- TICKS_RING - Ring Sample Tick Marks RAB6 RM
 - TICKS_GR - Gamma Ray Tick Marks RAB6 RM

Description: GVR Deep Button Image Comparison Format: Log (GVR Deep Button Image Comparison) Index Scale: 1:200 Index Unit: m Index Type: Measured Depth Creation Date: 25-Dec-2017 03:35:54

Channel Processing Parameters

Run 1: Parameters

Parameter	Description	Tool	Value	Unit
BHT	Bottom Hole Temperature	Borehole	5	degC
BS	Bit Size	DNMSESSION	8.5	in
DEPTH_SEL	Depth Selection Parameter	DNMSESSION	Driller's Depth	
DFT_CATEGORY	Drilling Fluid Type	Borehole	Water	
GRSE_RM	Generalized Mud Resistivity Selection for Recorded Mode	Borehole	REMS(RM)	
GTSE_RM	Generalized Temperature Selection for Recorded Mode	Borehole	DHAT(RM)	
IMG_INT_SCANS	Maximum Number of Image Scans to Interpolate Over	RAB6	1	
IMG_UPSAMPLE	Upsample Resistivity Images to 224 Bins	RAB6	Yes	
MST	Mud Sample Temperature	Borehole	23.89	degC
RMS	Resistivity of Mud Sample	Borehole	0.2	ohm.m
TEMP_SEL_RAB	RAB Temperature Selection	RAB6	Tool	

Tool Control Parameters

Run 1: Parameters

Parameter	Description	Tool	Value	Unit
OFFBTM_TH	Threshold for deciding whether the bit is off bottom	DNMSESSION	0.3	m

Run 1

GR Images and Button Images

Software Version

Acquisition System	Version
Maxwell 2017 SP3	7.3.92069.3100

Computation	Description	Version
RAB6Res	RAB6 Resistivity Computation Package for both Real-time and Recorded Mode	7.3.92069.3100
ECO6GammaRay	Natural Gamma Ray Processing, ECO 6.75	7.3.92069.3100
RAB6GR	RAB6 Gamma Ray Computation Package for both Real-time and Recorded Mode	7.3.92069.3100

SoftwareVersion_Tool	SoftwareVersion_System Version	SoftwareVersion_Loaded Version	
HSPM	20.3c.062	7.3.92069.3100	
Tool Elements	Description	Software Version	Firmware Version
RBEC	Electronics Chassis Assembly for RAB6-C	7.3.92069.3100	V8.6B
DVME	NeoScope 6.75 - Electronics Chassis	7.3.92069.3100	V5.300

Pass Summary

Run Name	Pass Objective	Direction	Top	Bottom	Start	Stop	Include Parallel Data
Run 1	Drilling	Down	2649.70 m	3247.31 m	20-Dec-2017 10:51:33 PM	23-Dec-2017 3:06:27 AM	Yes

All depths are referenced to toolstring zero

Log

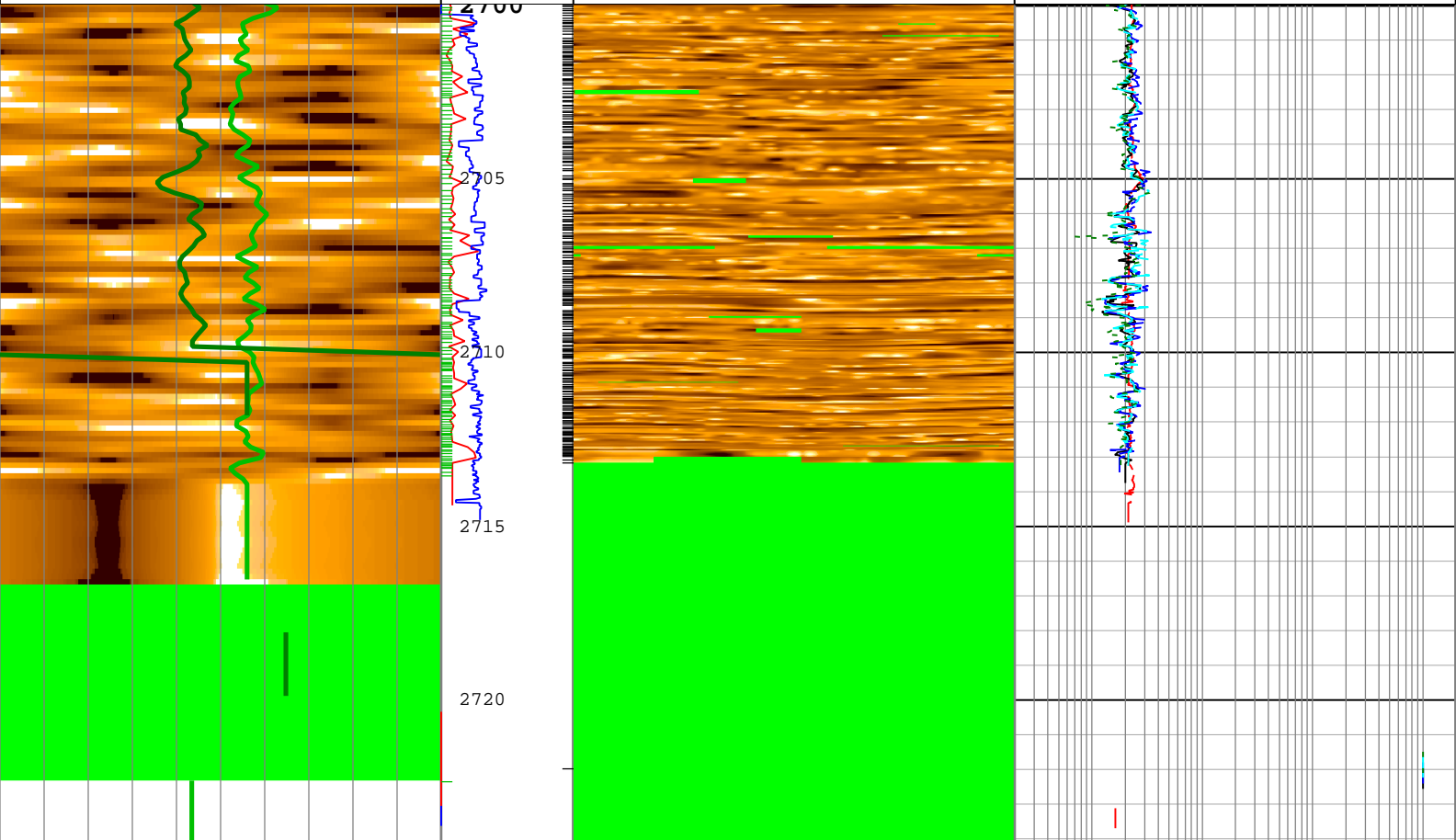
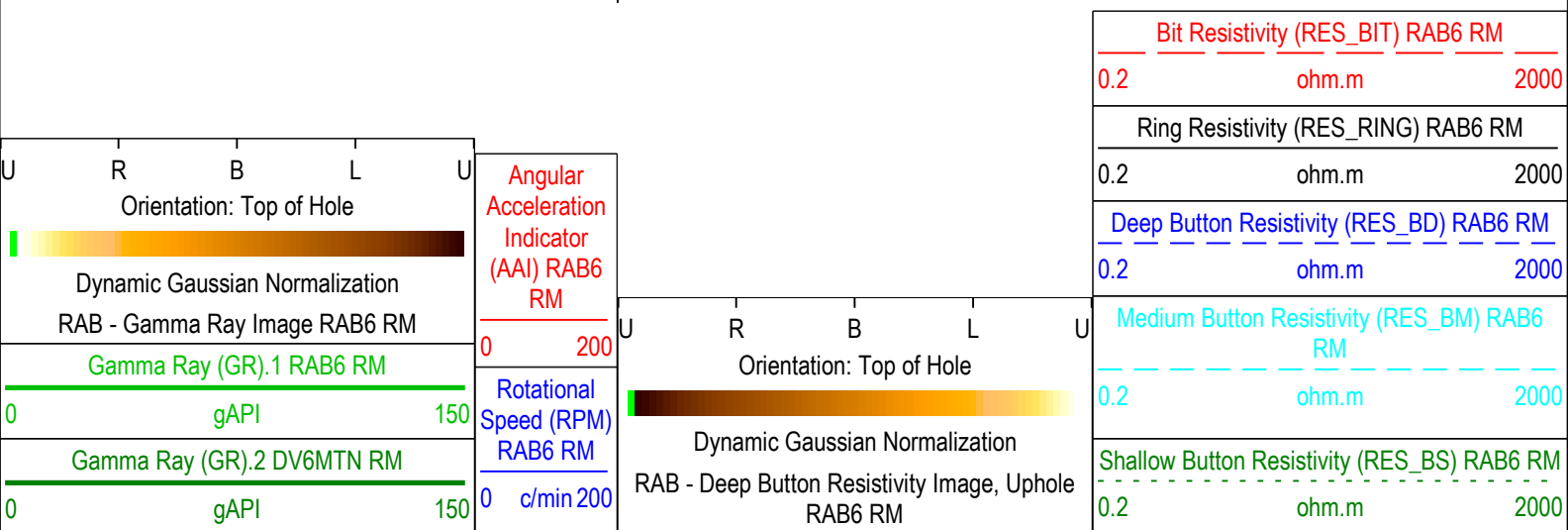
Company:IODP Well:HSM-15A_B

Run 1: Drilling:S043

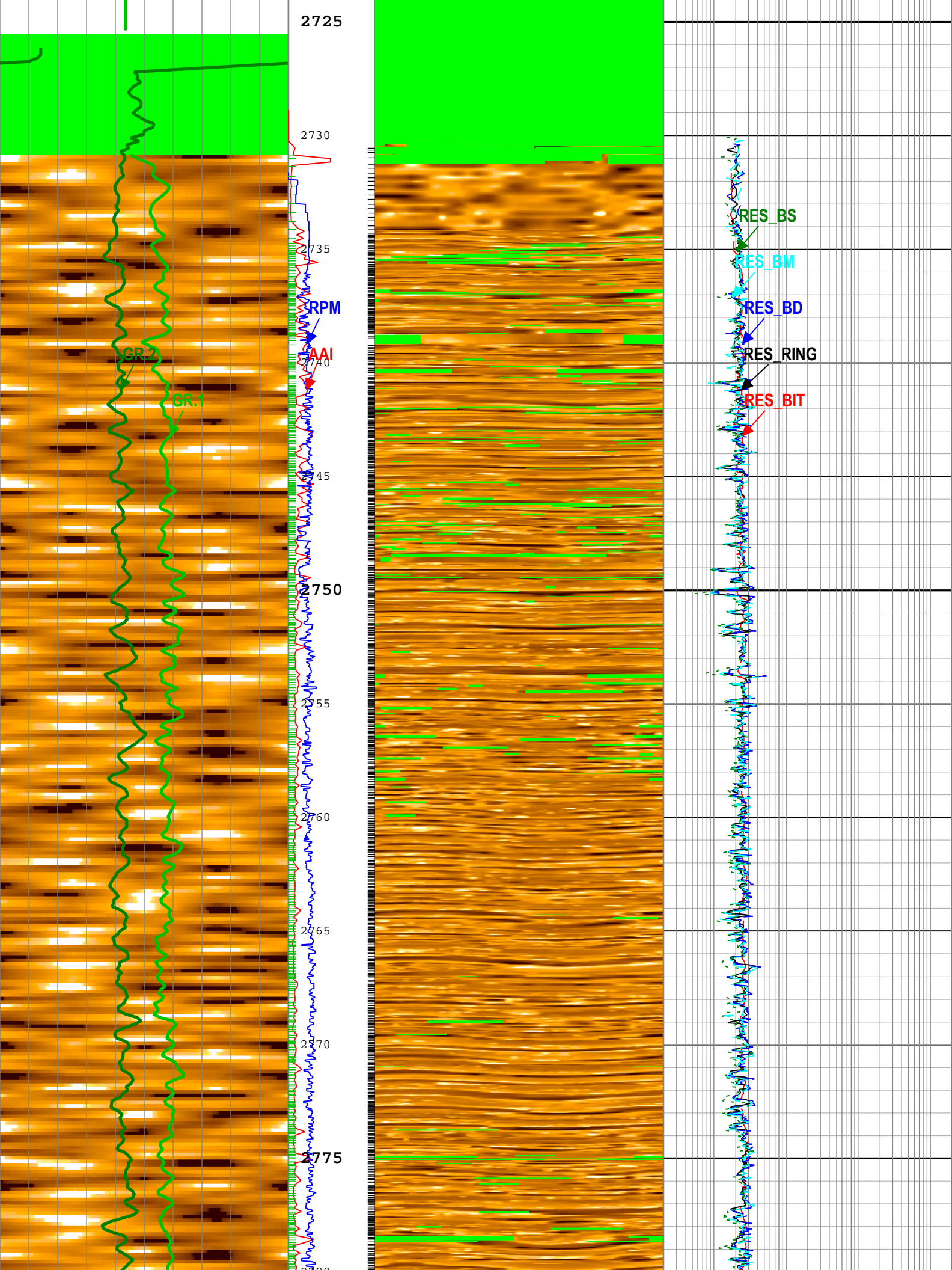
Description: GVR GR Image, Button Image, Resistivity Format: Log (GVR GR Image, Button Image, Resistivity) Index Scale: 1:200 Index Unit: m Index Type: Measured Depth Creation Date: 25-Dec-2017 03:36:23

TICKS_GR - Gamma Ray Tick Marks RAB6 RM

TICKS_RING - Ring Sample Tick Marks RAB6 RM



2725



2730

2735

RPM

AAI

2740

GR.0

GR.1

2745

2750

2755

2760

2765

2770

2775

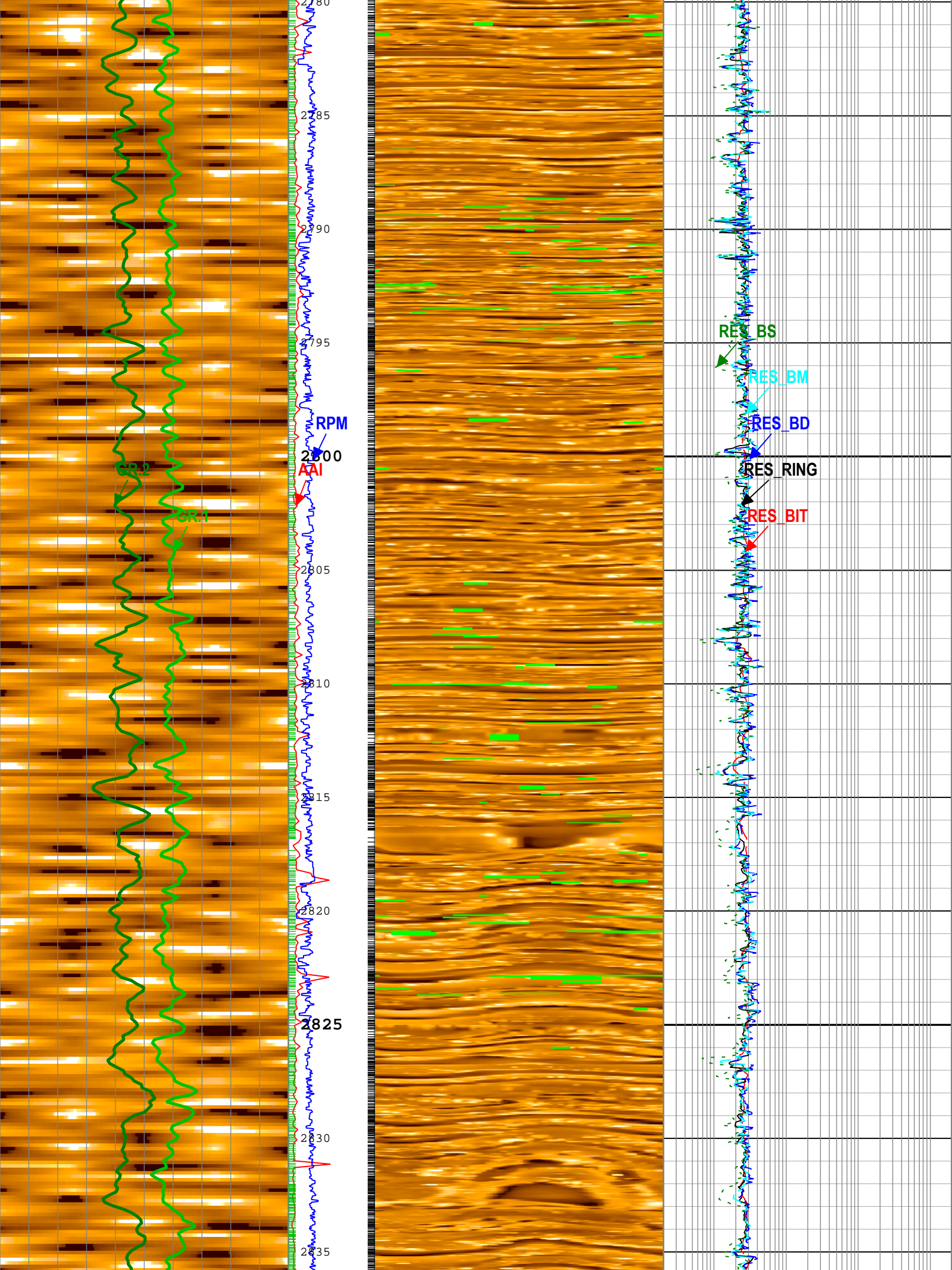
RES_BS

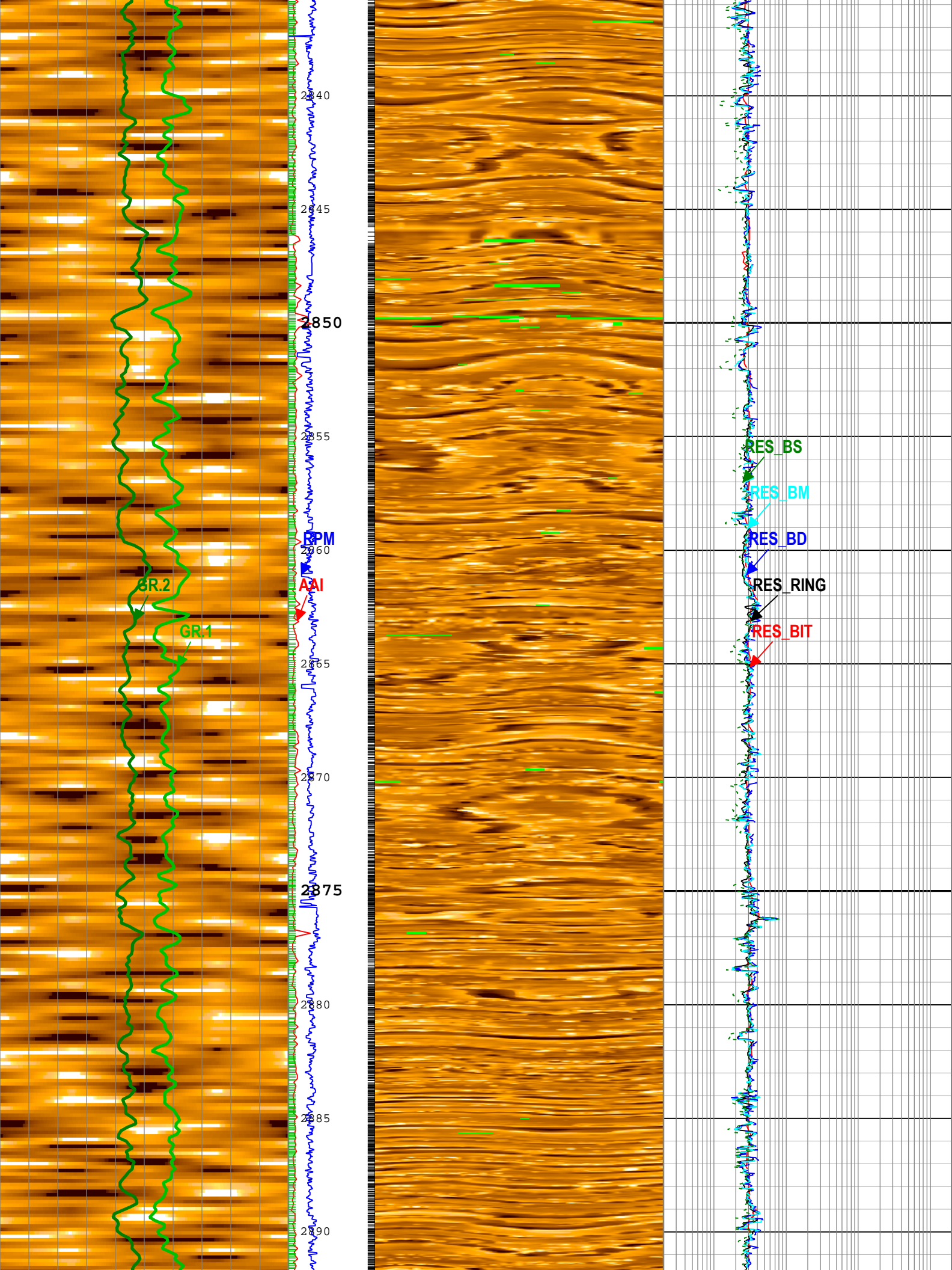
RES_BM

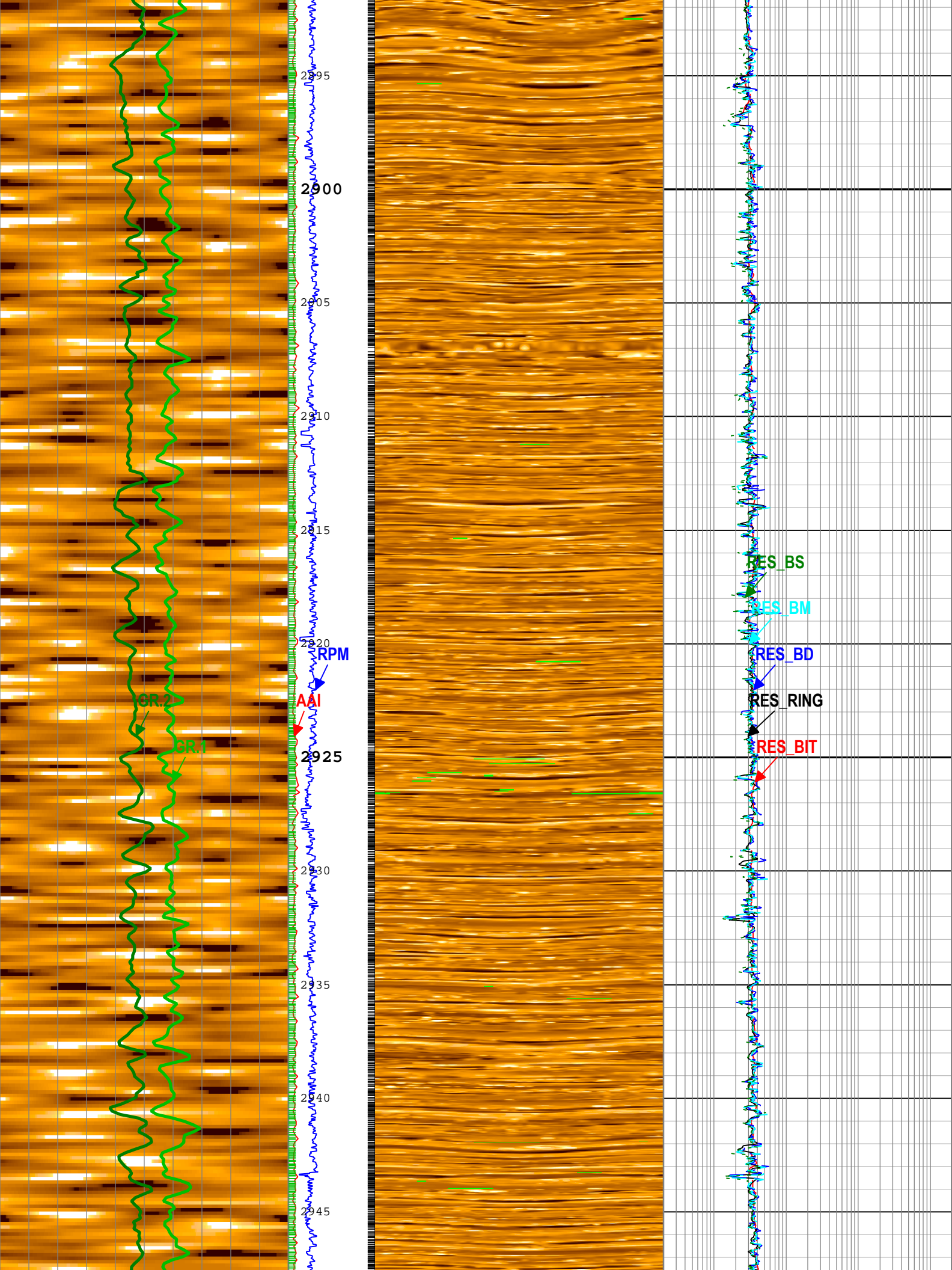
RES_BD

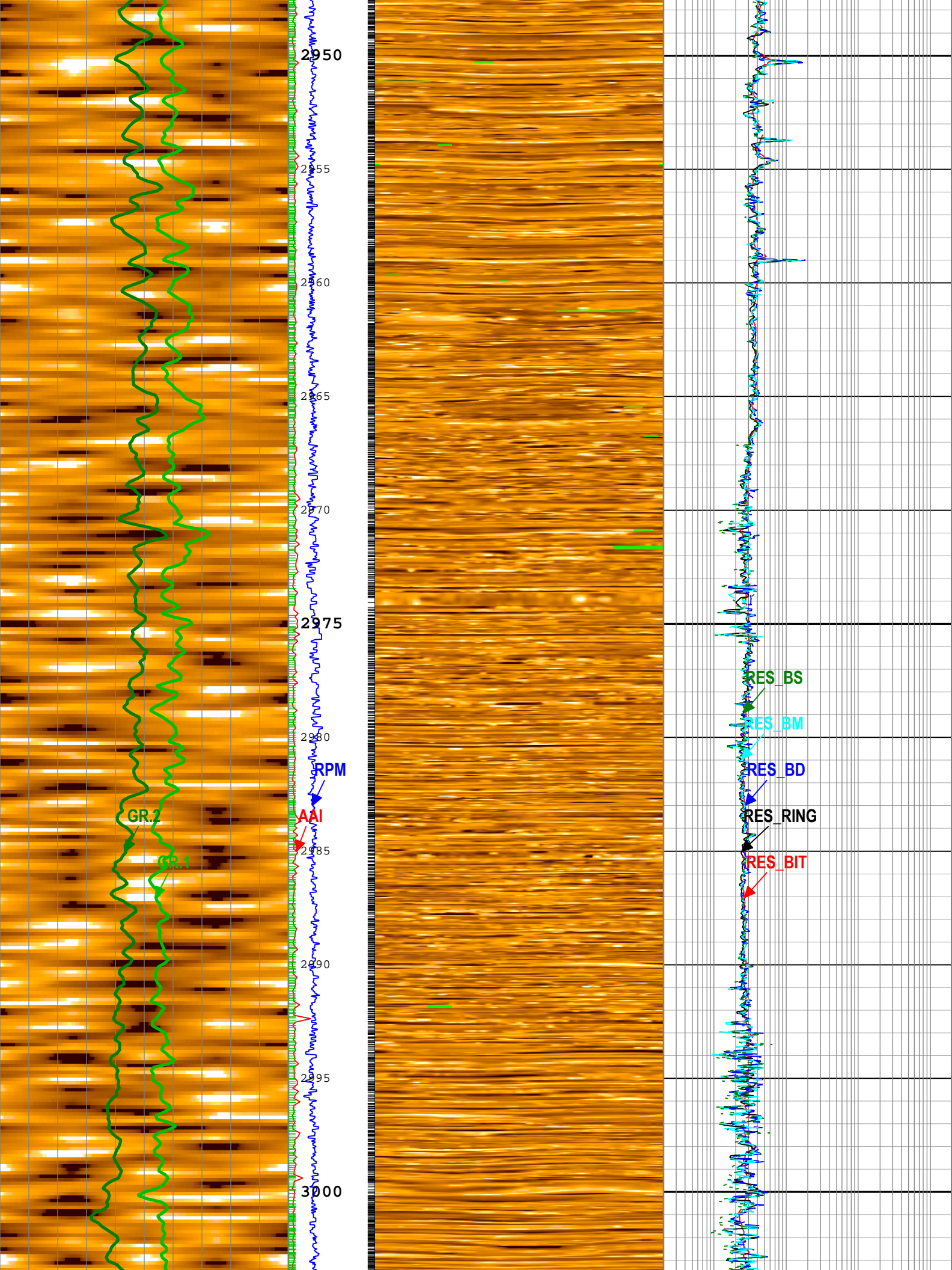
RES RING

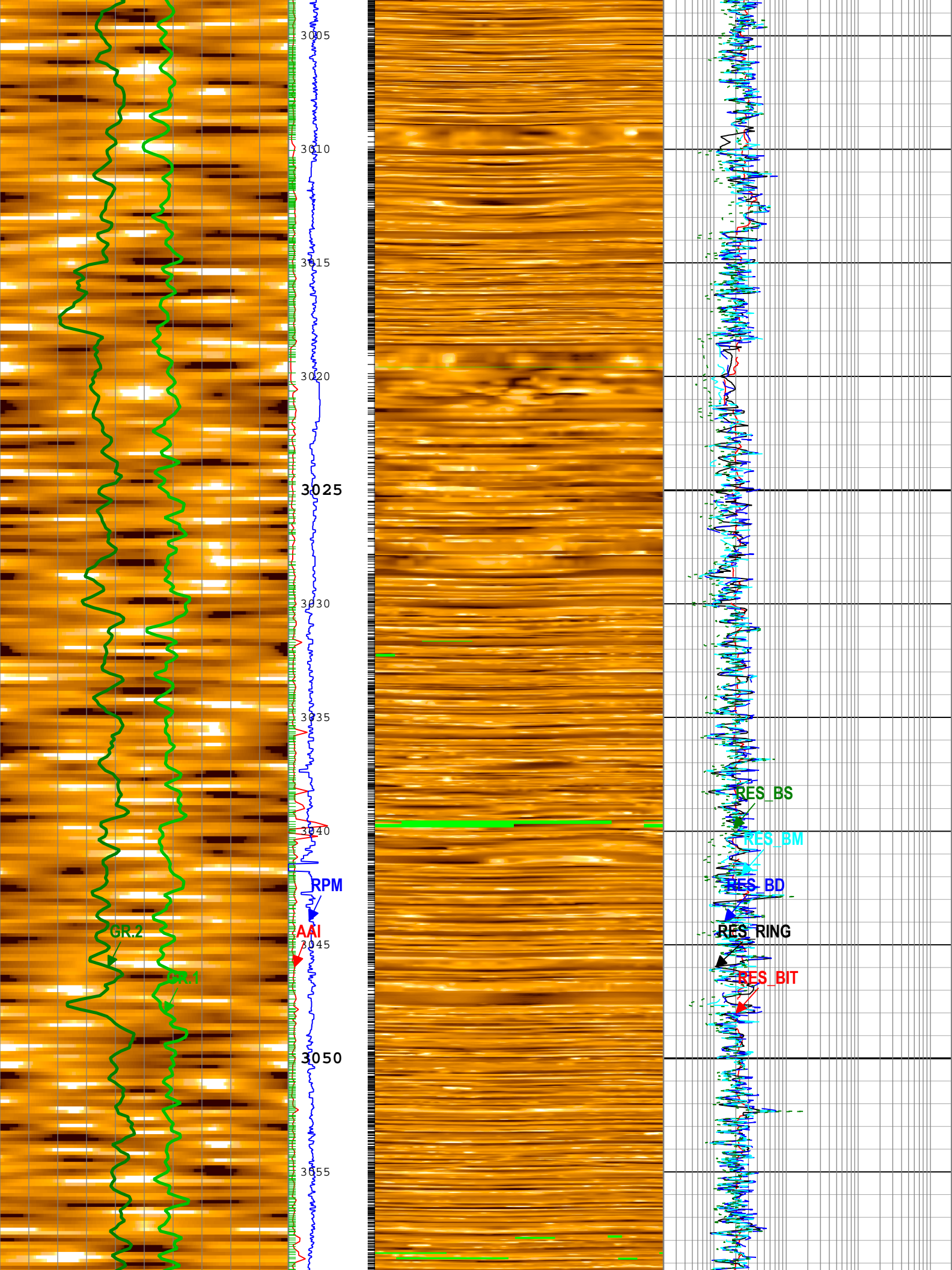
RES_BIT

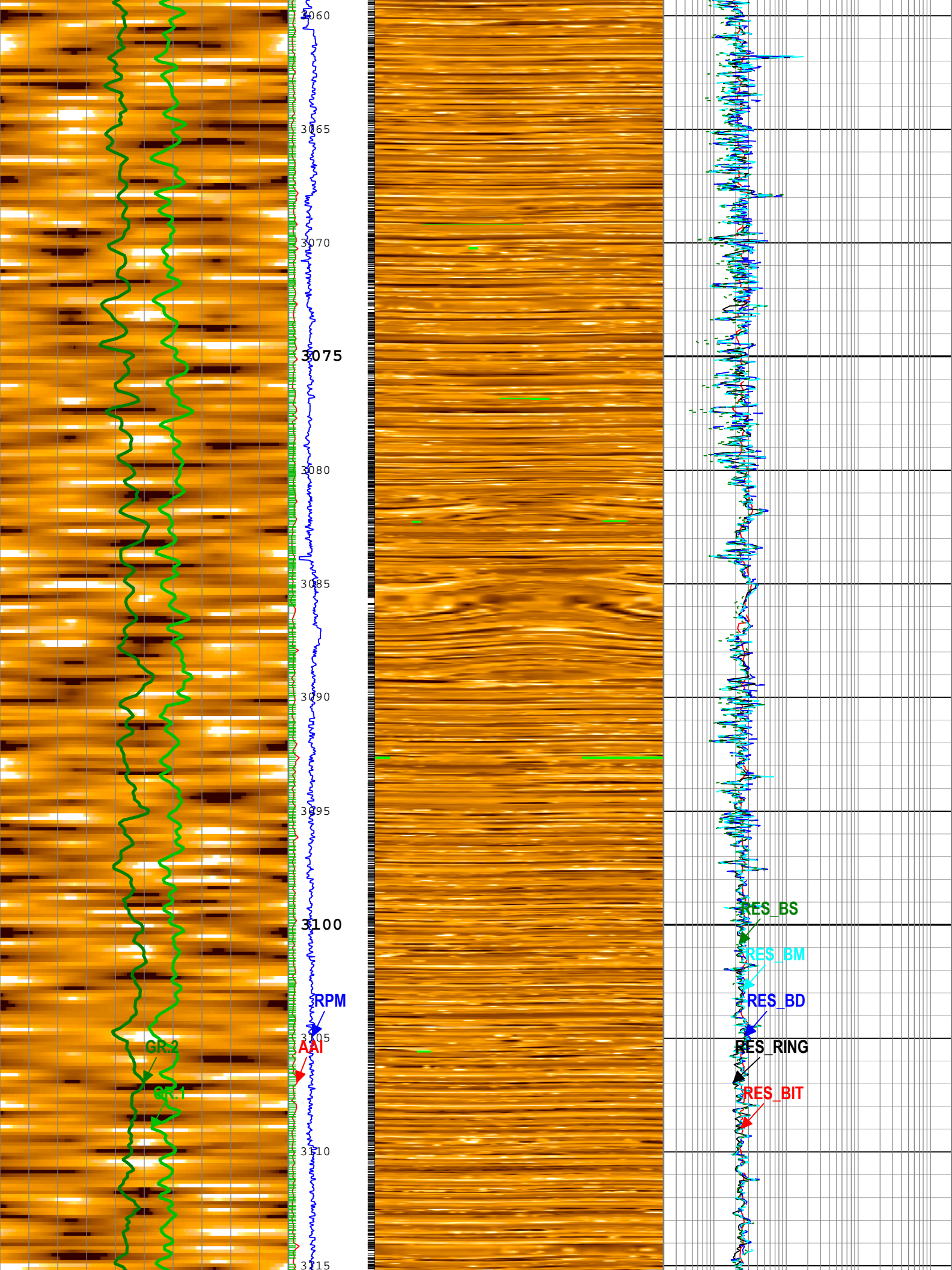


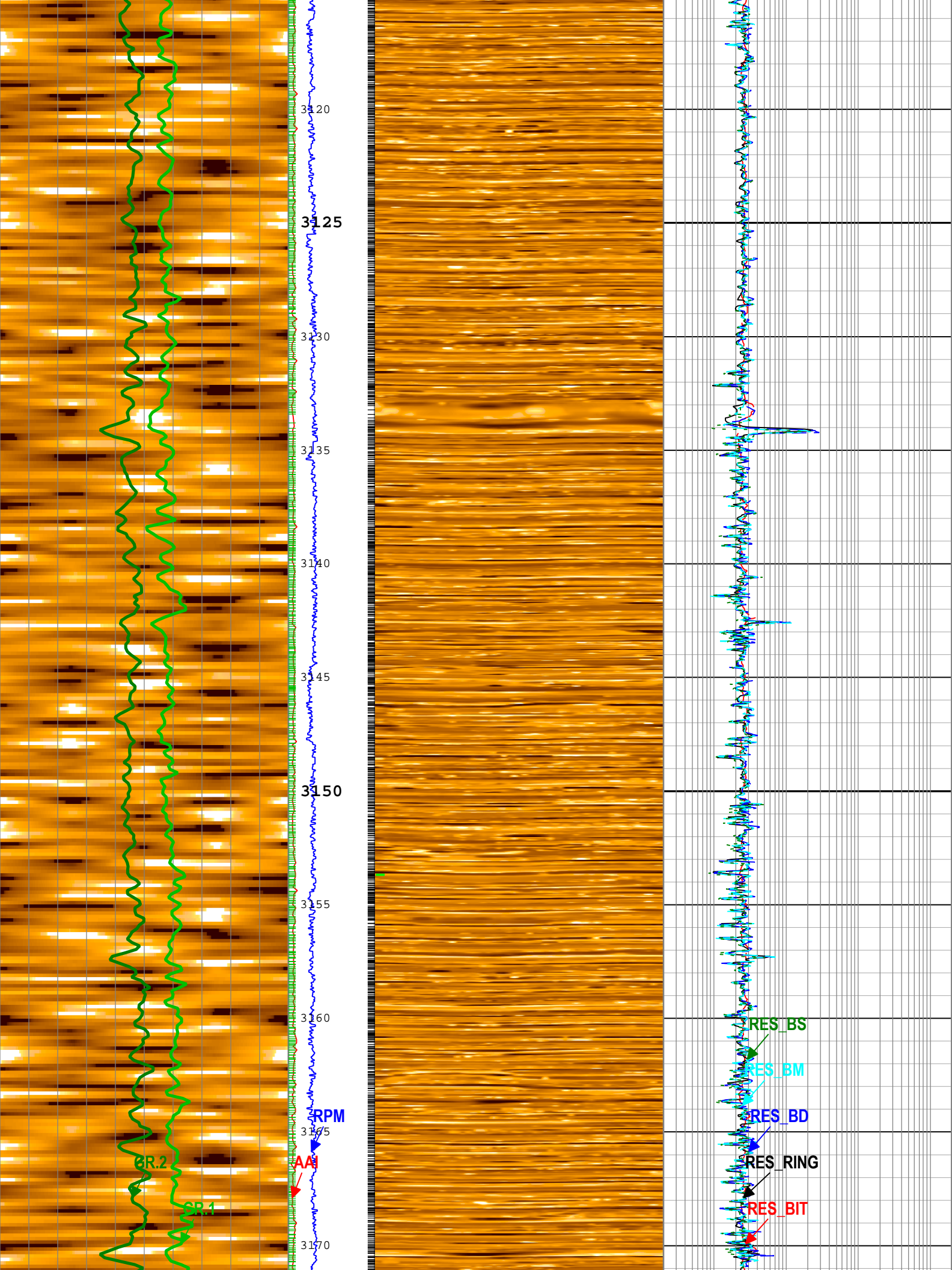


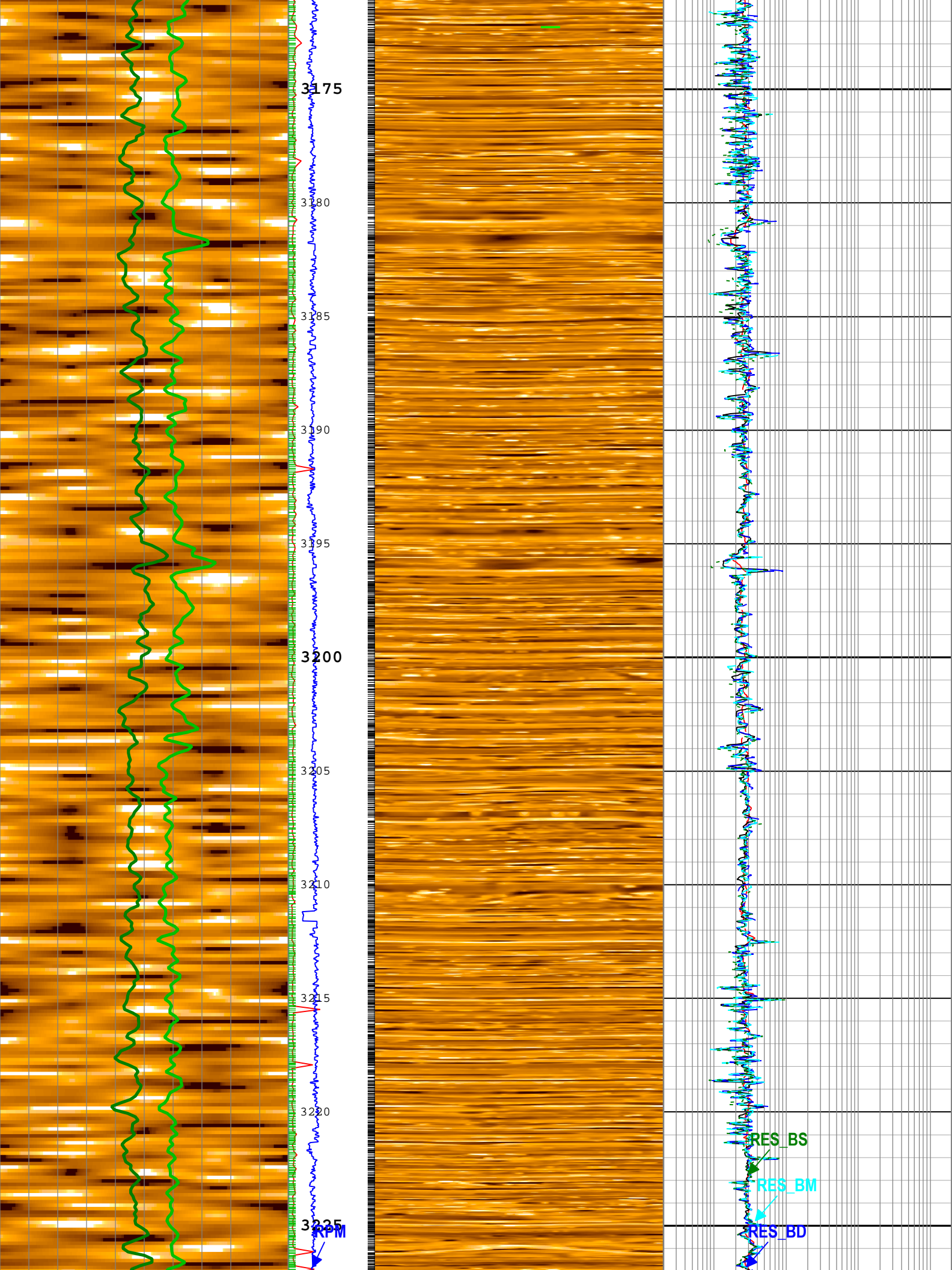


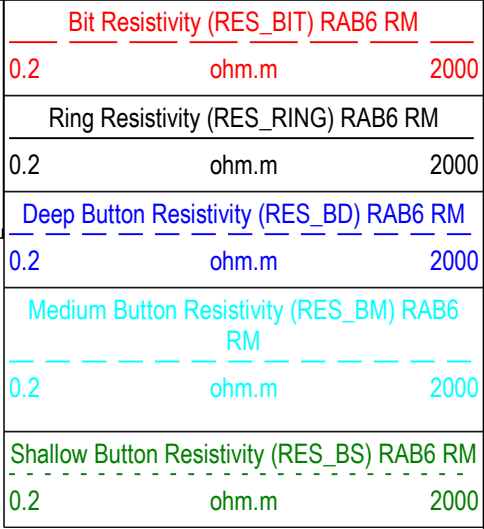
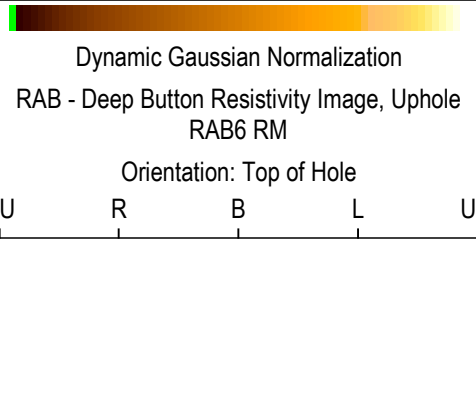
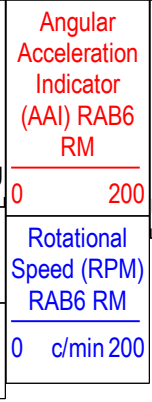
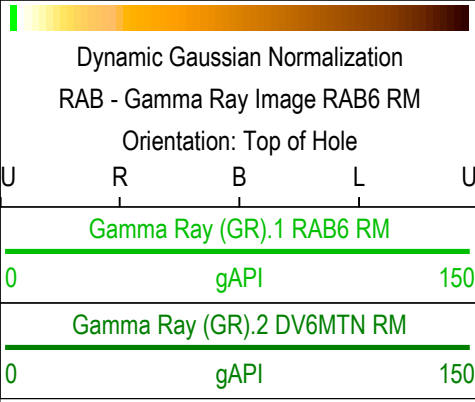
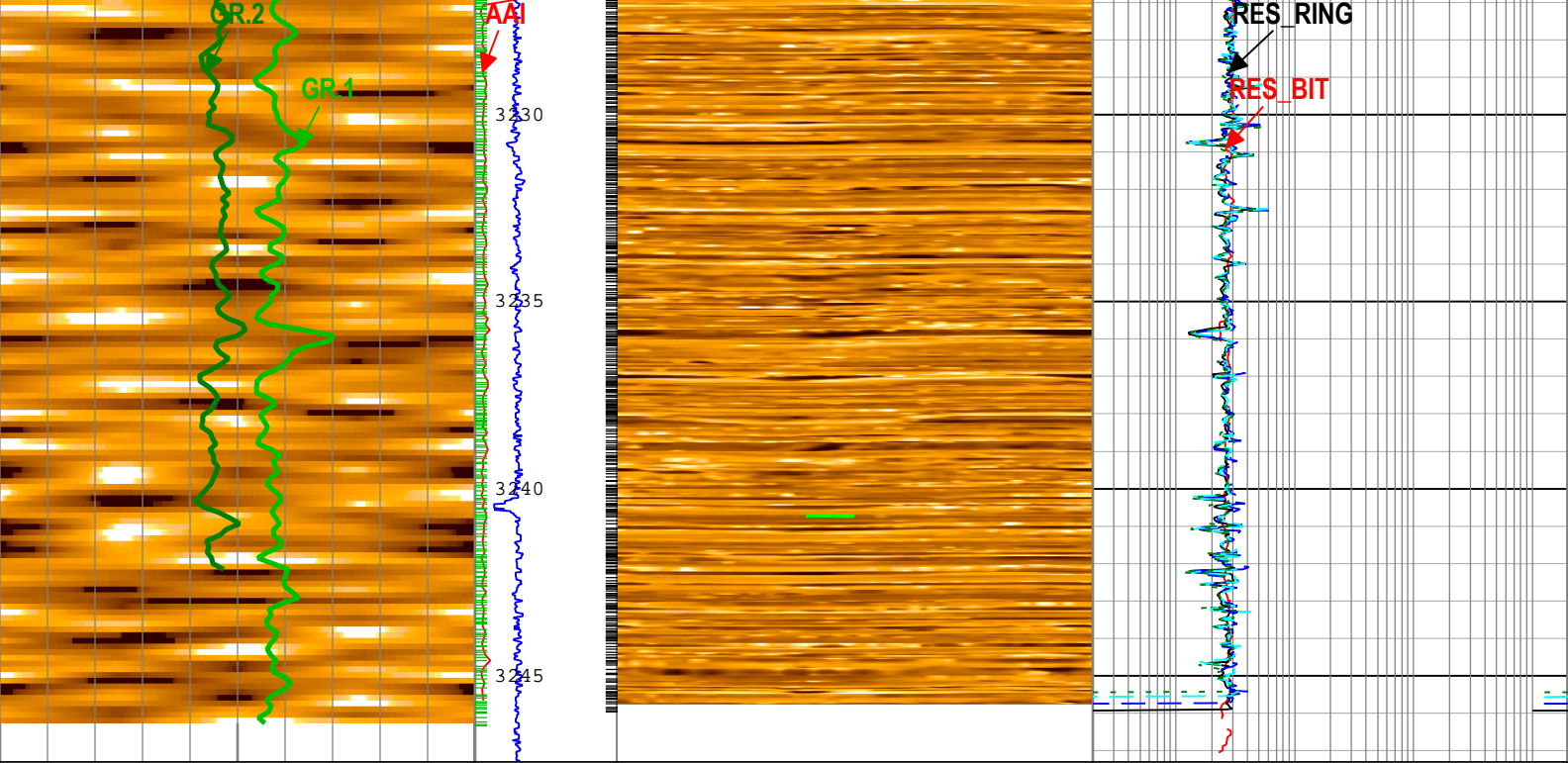












┆TICKS_RING - Ring Sample Tick Marks RAB6 RM

┆TICKS_GR - Gamma Ray Tick Marks RAB6 RM

Description: GVR GR Image, Button Image, Resistivity Format: Log (GVR GR Image, Button Image, Resistivity) Index Scale: 1:200 Index Unit: m Index Type: Measured Depth Creation Date: 25-Dec-2017 03:36:23

Channel Processing Parameters

Run 1: Parameters

Parameter	Description	Tool	Value	Unit
BHK	Drilling Fluid Potassium Concentration	Borehole	0	%
BHT	Bottom Hole Temperature	Borehole	5	degC
BS	Bit Size	DNMSESSION	8.5	in
CALI_SEL_GR	Hole-Size Correction Source for Gamma-Ray Processing	DV6MTN	GCSE	
DEPTH_SEL	Depth Selection Parameter	DNMSESSION	Driller's Depth	
DFD	Drilling Fluid Density	Borehole	8.6	lbm/gal
DFT_CATEGORY	Drilling Fluid Type	Borehole	Water	
GCSE_RM	Generalized Caliper Selection for DnM recorded mode	Borehole	BS	
GR_O2COR_OPT	Enable Gamma Ray Oxygen Activation Correction	DV6MTN	Yes	
GRSE_RM	Generalized Mud Resistivity Selection for Recorded Mode	Borehole	REMS(RM)	
GTSE_RM	Generalized Temperature Selection for Recorded Mode	Borehole	DHAT(RM)	
IMG_INT_SCANS	Maximum Number of Image Scans to Interpolate Over	RAB6	1	

IMG_UPSAMPLE	Upsample Resistivity Images to 224 Bins	RAB6	Yes	
MST	Mud Sample Temperature	Borehole	23.89	degC
OACF	O2 Activation Correction Factor (RM)	DV6MTN	8	
RMS	Resistivity of Mud Sample	Borehole	0.2	ohm.m
STOH	Top of Hole Sector	DV6MTN	SECTOR_0	
TEMP_SEL_RAB	RAB Temperature Selection	RAB6	Tool	

Tool Control Parameters

Run 1: Parameters

Parameter	Description	Tool	Value	Unit
OFFBTM_TH	Threshold for deciding whether the bit is off bottom	DNMSESSION	0.3	m