

HSM-15A\_B

SonicScope

Monopole High Compressional Processing QC Plot

\* A Mark of Schlumberger

Using the following logs: SonicScope, NeoScope

COMPANY: IODP

WELL: HSM-15A\_B

FIELD: Joides Resolution

COUNTRY: New Zealand

Date Logged: 23-Dec-2017

Date Processed:

28-Dec-2017

Surface Location Longitude: 178° 53' 45.618" E Latitude: 38° 51' 32.202" S

Elevations: DF: 11 m

GL: -2637 m

FOLD HERE:

The well name, location and borehole reference data were furnished by the customer.

Any interpretation, research, analysis, data, results, estimates, or recommendation furnished with the services or otherwise communicated by Schlumberger to the customer at any time in connection with the services are opinions based on inferences from measurements, empirical relationships, and/or assumptions; which, inferences, empirical relationships and/or assumptions are not infallible and with respect to which professionals in the industry may differ. Accordingly, Schlumberger cannot and does not warrant the accuracy, correctness, or completeness of any such interpretation, research, analysis, data, results, estimates, or recommendation. The customer acknowledges that it is accepting the services "as is," that Schlumberger makes no representation or warranty, express or implied, of any kind or description in respect thereto, and that such services are delivered with the explicit understanding and agreement that any action taken based on the services received shall be at its own risk and responsibility, and no claim shall be made against Schlumberger as a consequence thereof.

Svc. Order #:	Techlog Vers: 2017.2	Analyst P. Bhuyan	Process Date: 28 December 2017
---------------	----------------------	-------------------	--------------------------------

Mud and Borehole Measurements:		
Casing Size:	BHT : 5 degC	Bit Size: 8.5 in
Casing ID:	Type Fluid in Hole: Sea Water	
Casing Weight	Mud density: 1.02 gm/cc	

**Remarks:**

Compressional slowness has been processed from Monopole High waveform.  
Data might be affected due to borehole condition and mud contamination.

Processing parameters summary

**Monopole High STC**

**Borehole status:** Open hole  
**Energy threshold:** 5 Pa  
**Filter band high:** 13000 Hz  
**Formation type:** Very slow  
**Dispersion file mode:** None

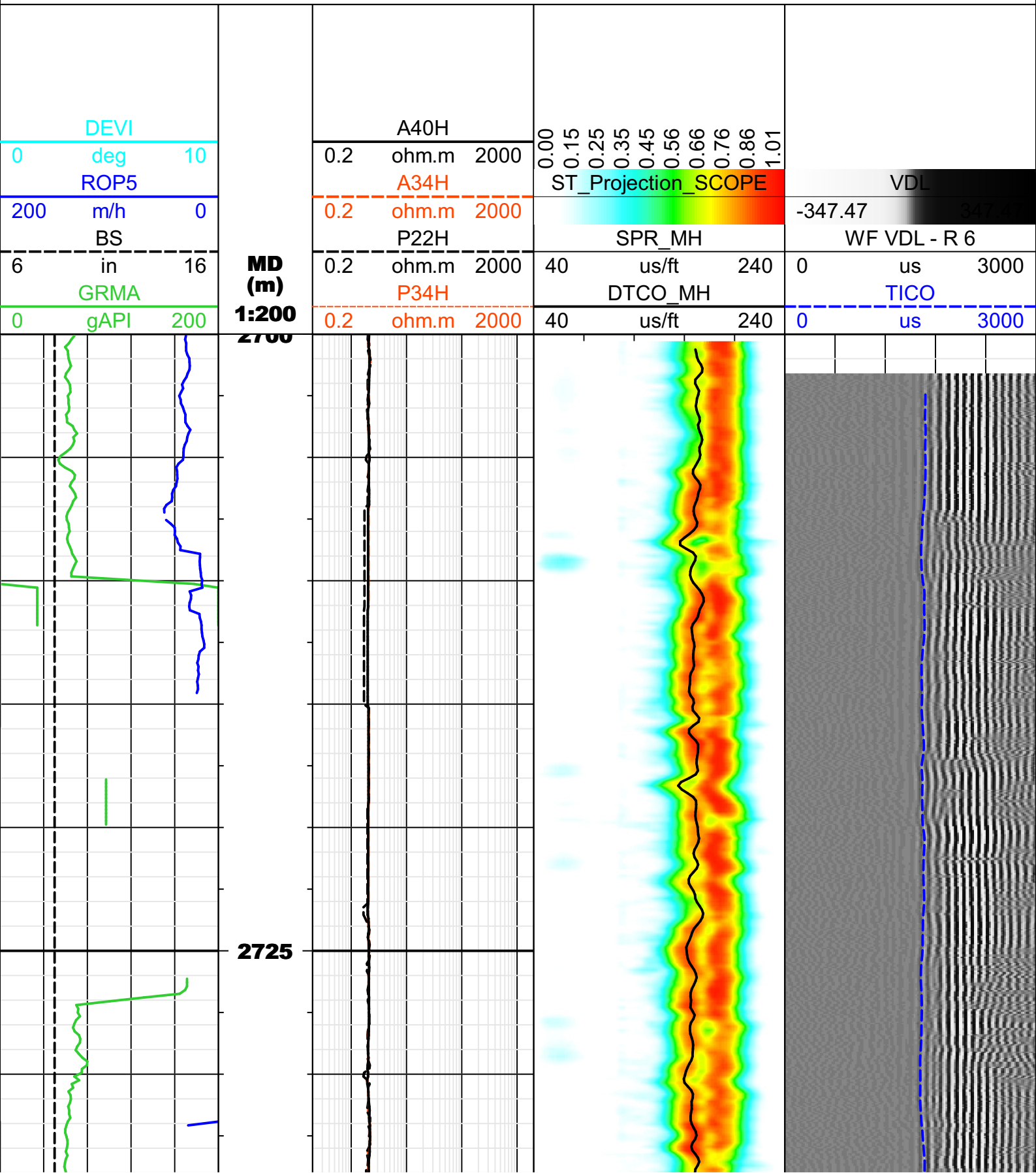
**Bit size:** 8.5 in  
**Energy threshold option:** Collar only  
**Filter band low:** 9000 Hz  
**Average hole size:** 8.5 in  
**Receiver/transmitter/DDBHC mode:** Receiver mode

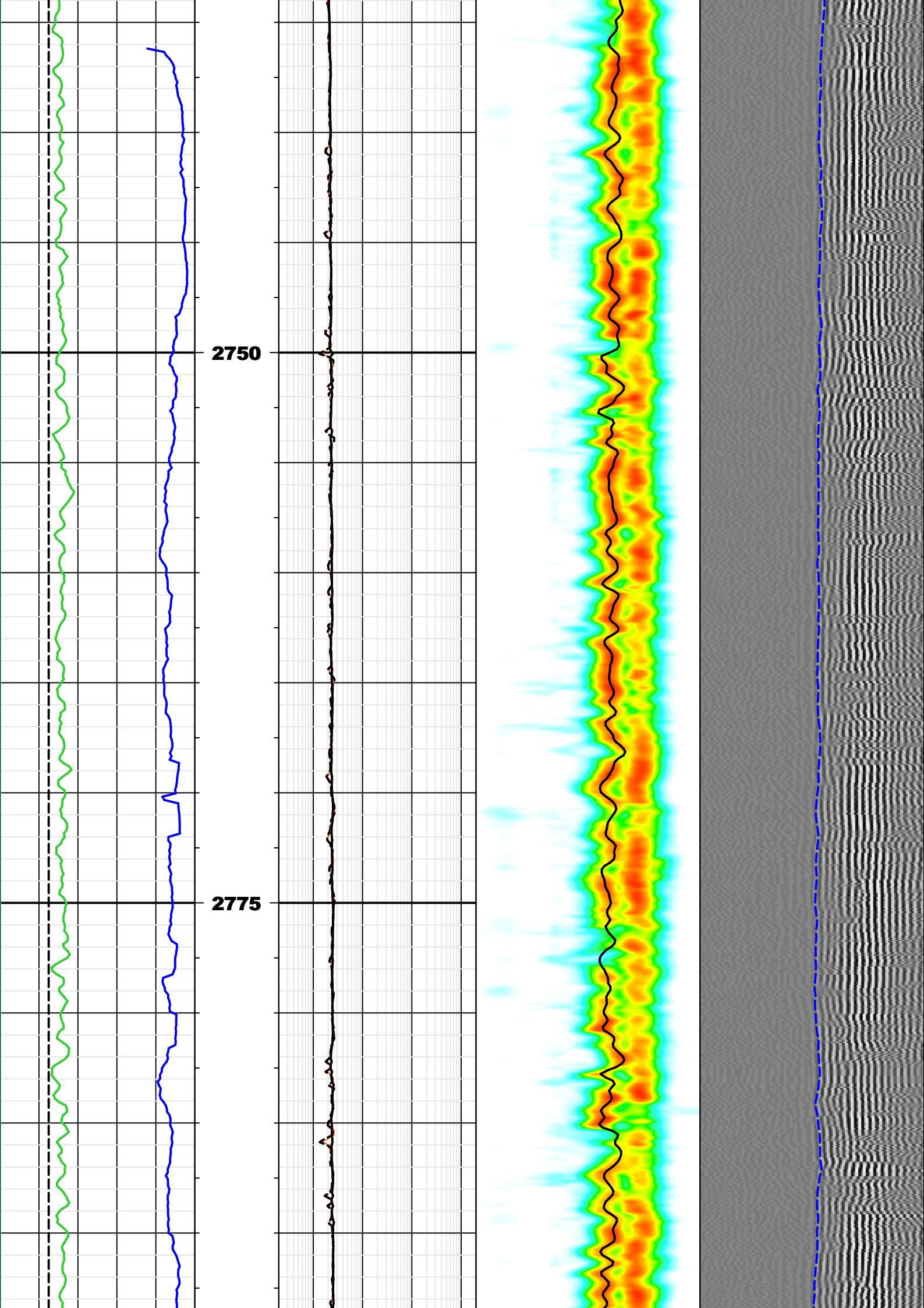
**Caliper:** BS in  
**Filter length:** 41  
**Filter type:** Static filter  
**Leaky-P:** No  
**Mud slowness:** 200 us/ft

**Mud density:** 8.599999 lbm/gal  
**Search band offset:** 294.583 us  
**Slowness lower limit:** 40 us/ft  
**STC stacking:** Yes  
**Slowness width:** 20 us/ft  
**Min frequency:** 0 Hz  
**Time lower limit:** 400 us  
**Shear lower limit:** 160 us/ft  
**Time upper limit:** 3700 us  
**Waveform:** WFA\_MHT\_MEDRS\_FILT\_5\_RUN11 unitless

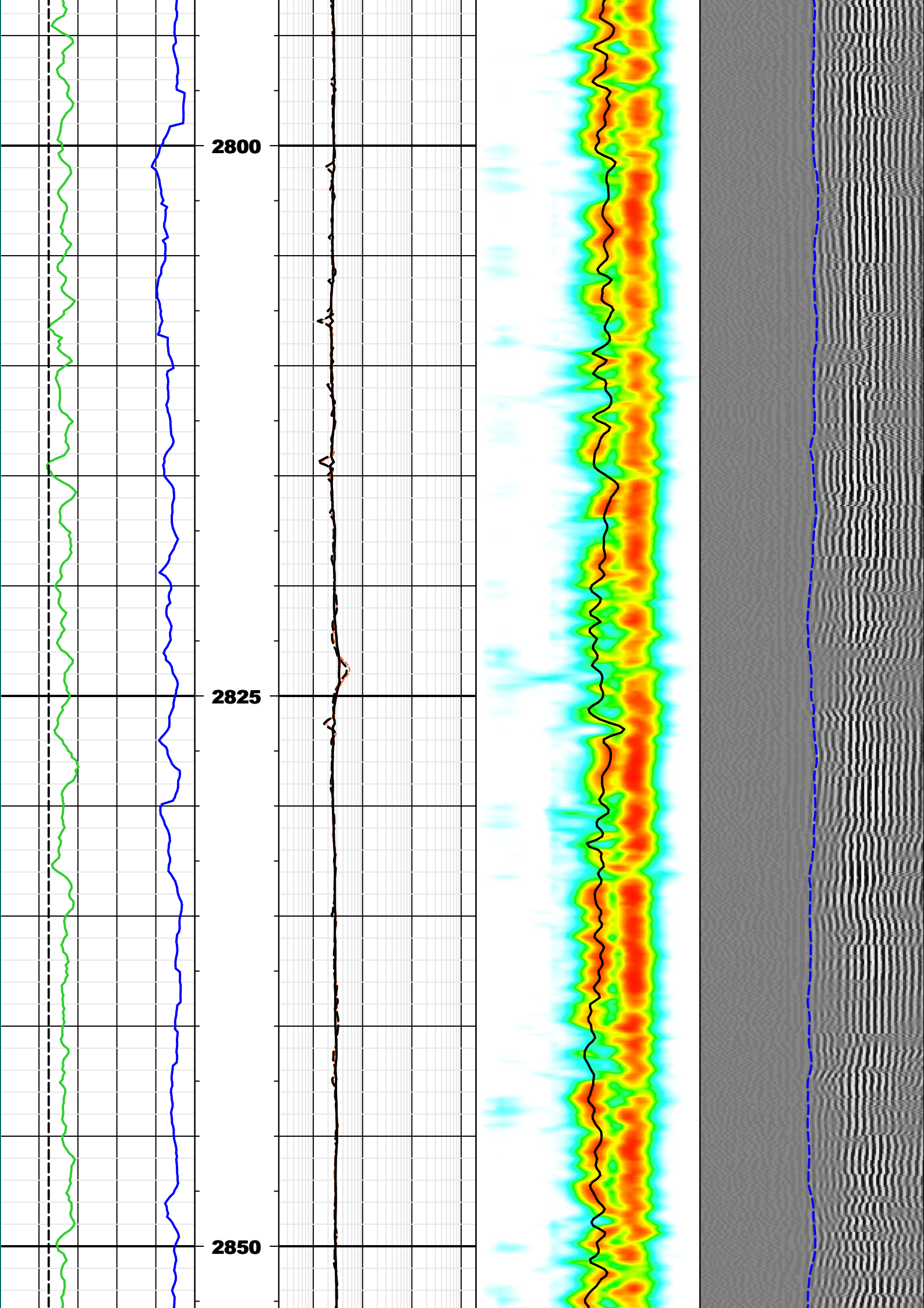
**Mud type:** WBM  
**Search band width:** 2135.83 us  
**Shear only processing:** No  
**Stacked frames:** 3  
**Compute SFA:** Yes  
**Model order:** 2  
**Compressional lower limit:** 90 us/ft  
**Shear upper limit:** 1112 us/ft  
**Time width:** 1600 us  
**Reference receiver:** 6

**Multishot NRSA:** 7  
**Semblance threshold:** 0.35  
**Slowness step:** 2 us/ft  
**Slowness upper limit:** 240 us/ft  
**Max frequency:** 12000 Hz  
**Matching tolerance:** 50  
**Compressional upper limit:** 202.5 us/ft  
**Time step:** 100 us  
**Integration time window:** 300 us  
**Receiver selection:** R1;R2;R3;R4;R5;R6;R7;R8;R9;R10;R11;R12

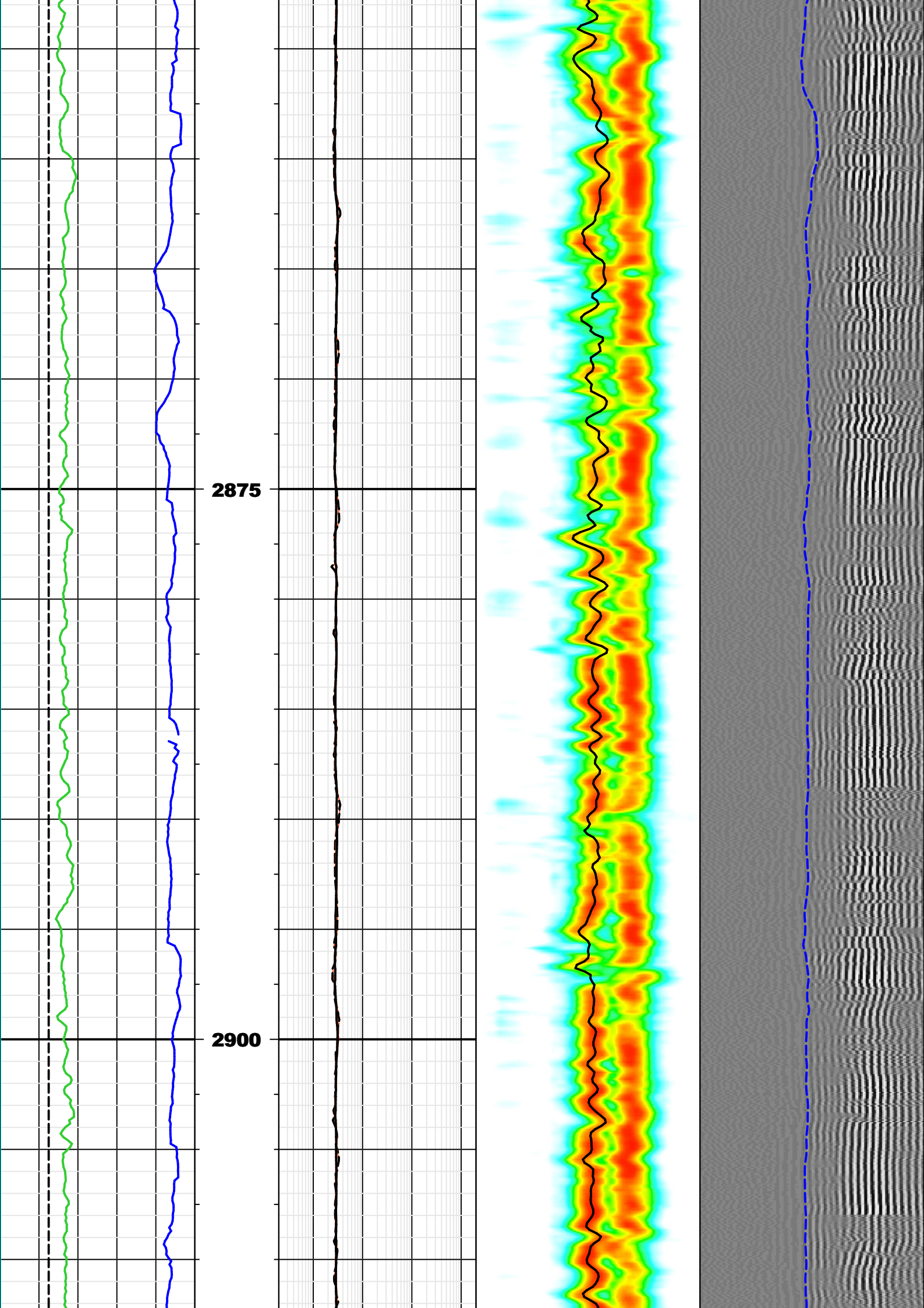


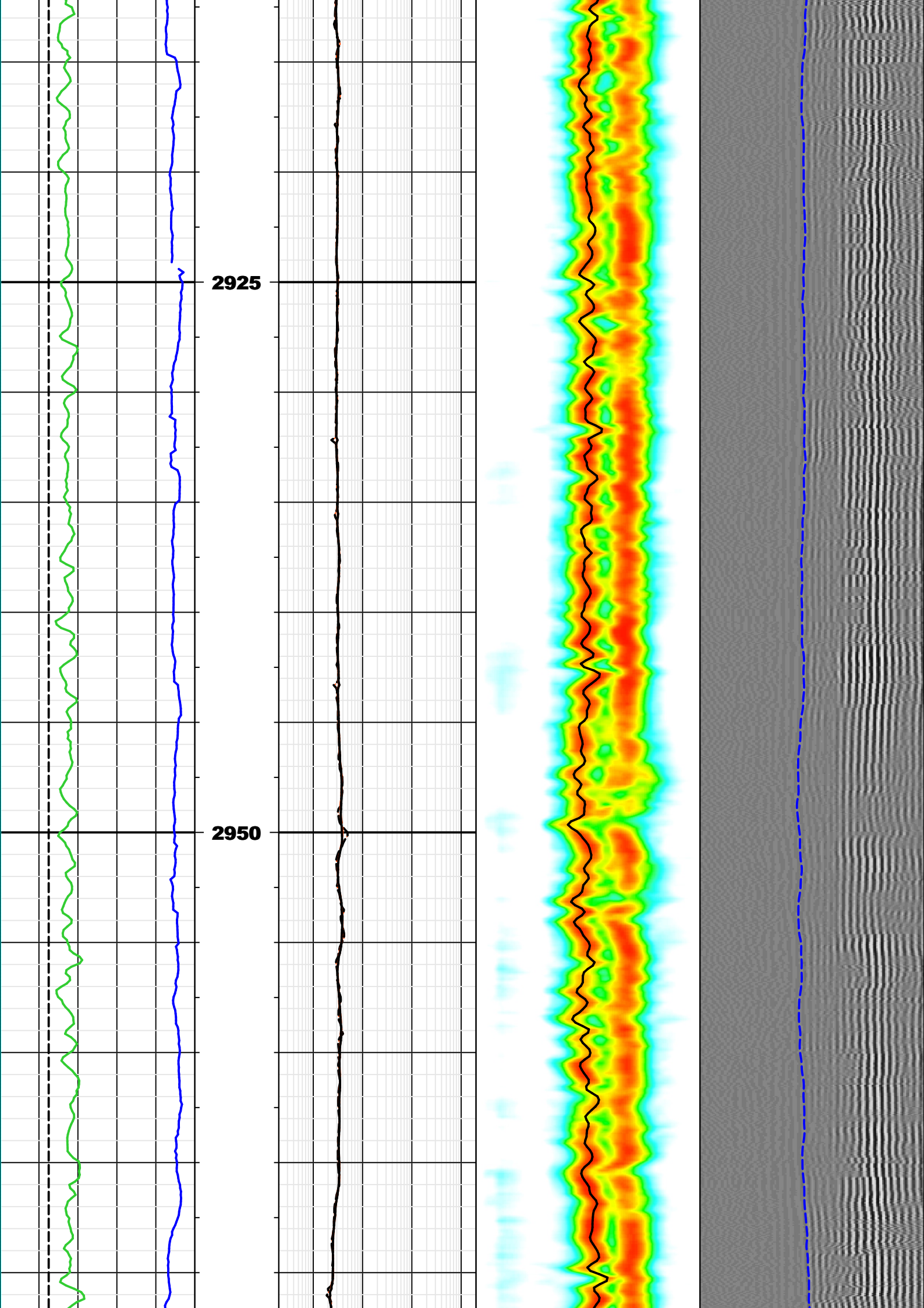




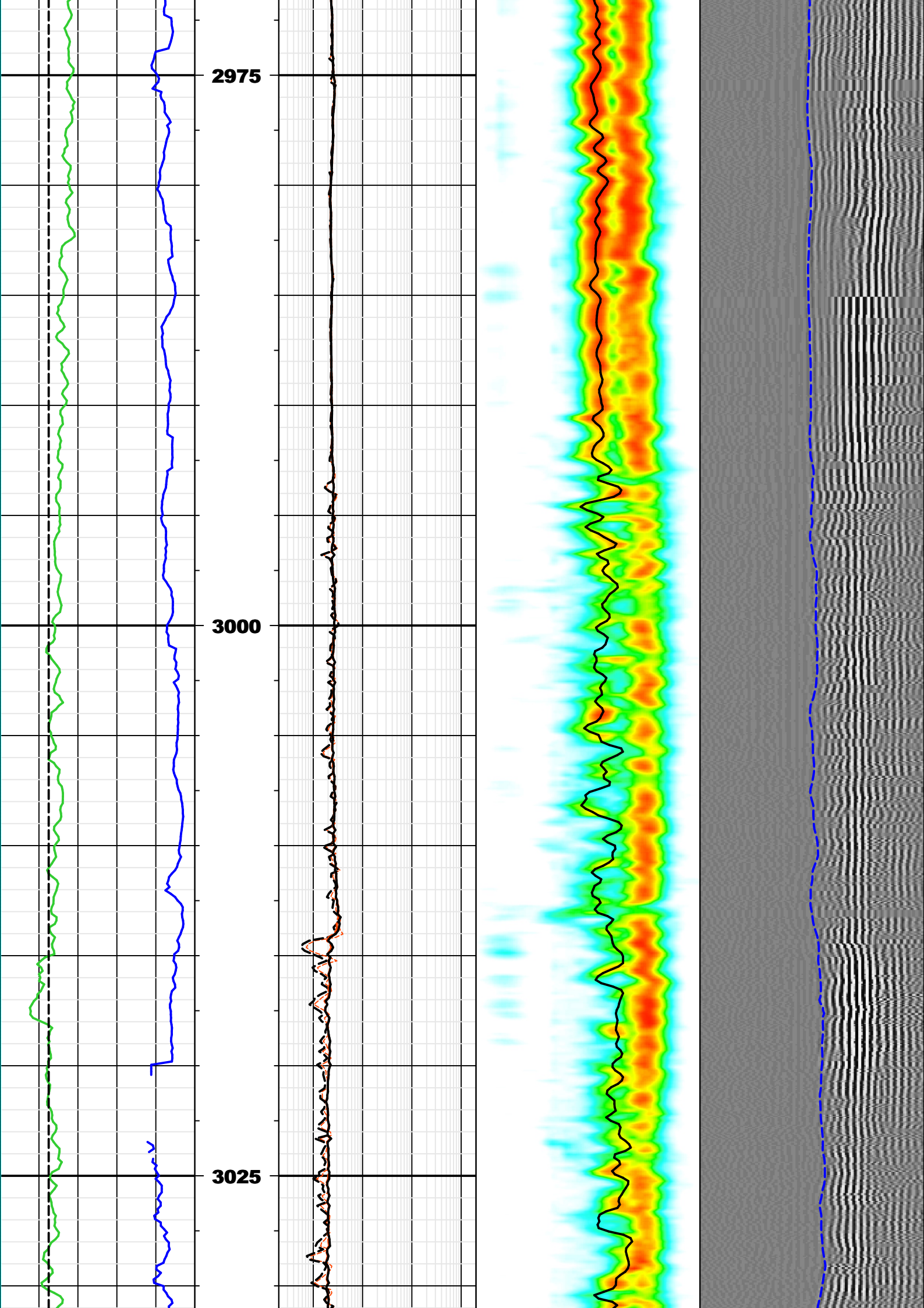




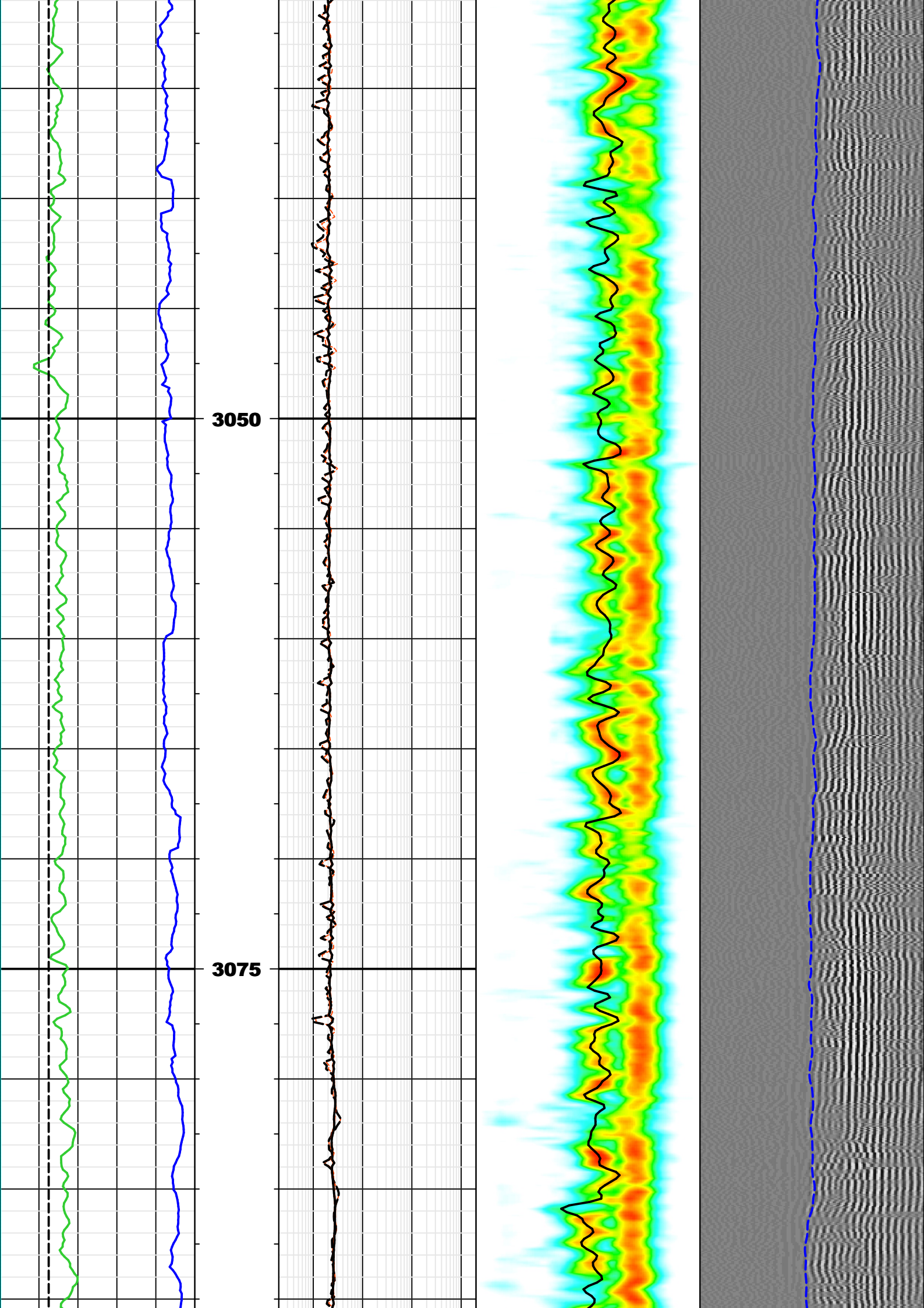


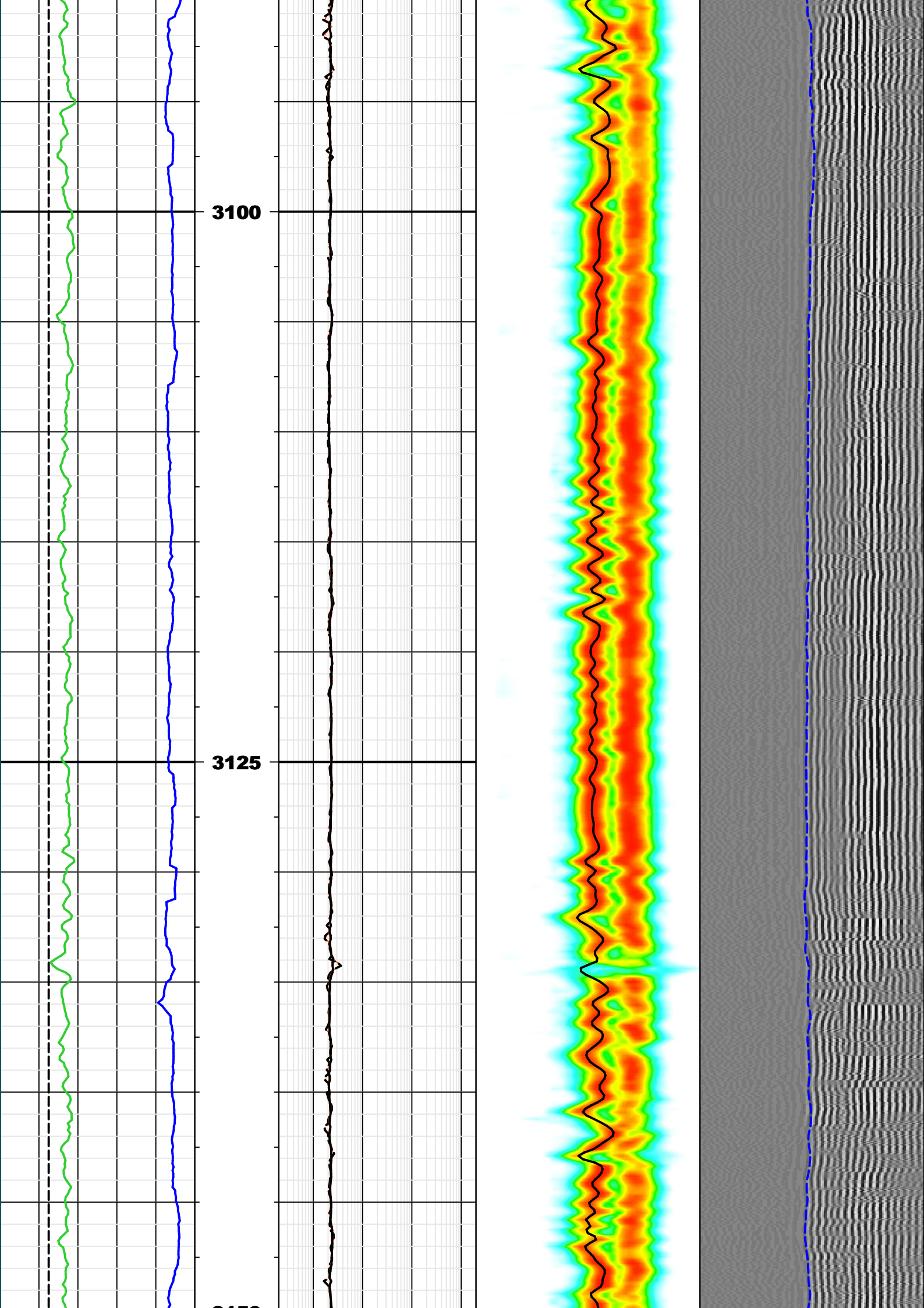










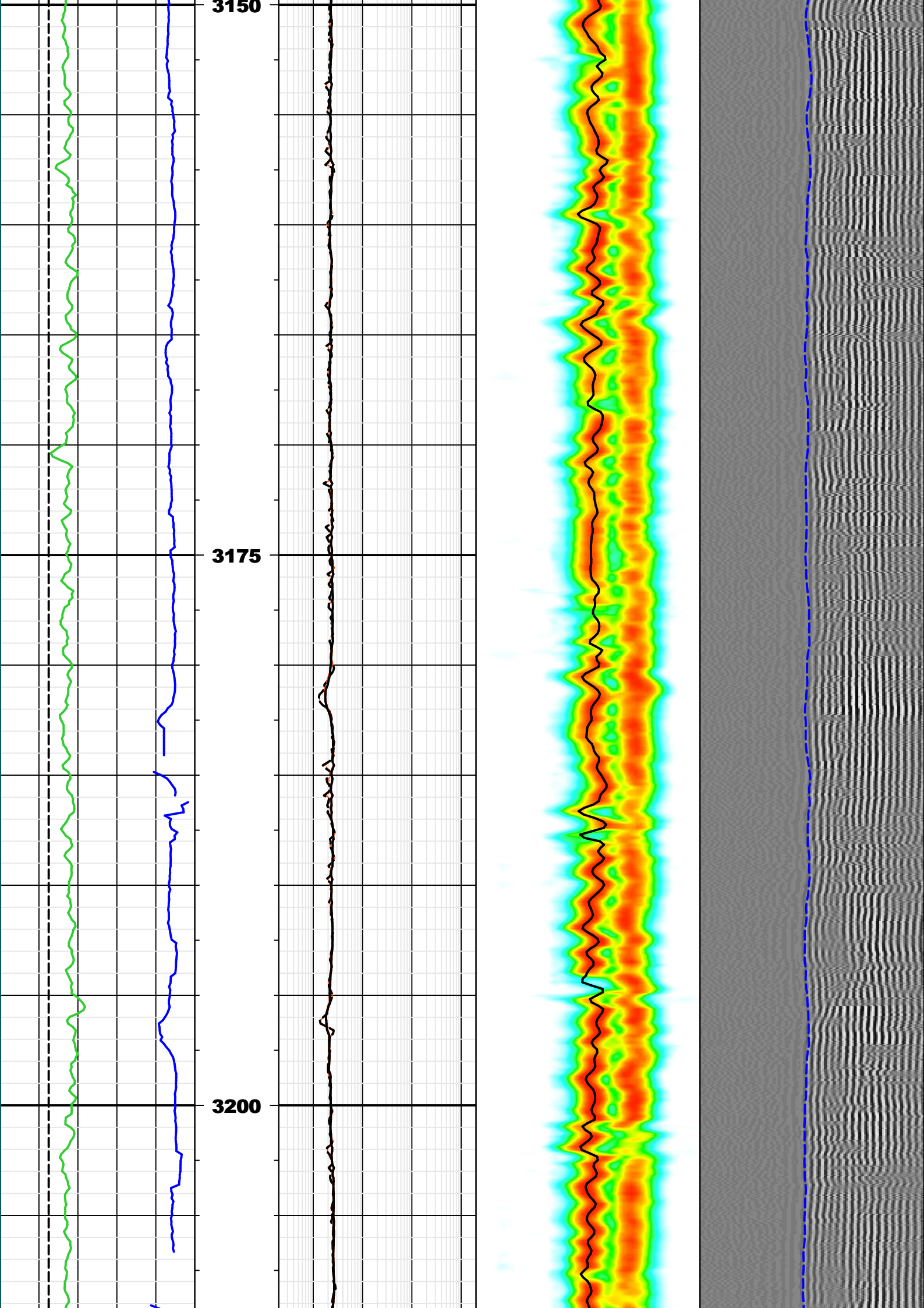


3100

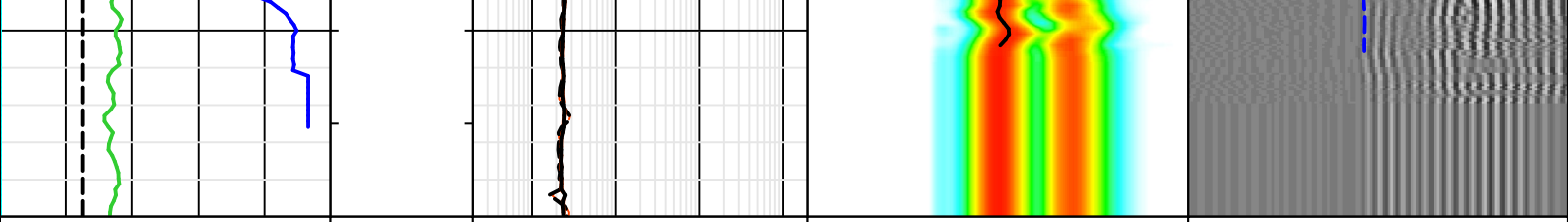
3125

3150









DEVI 0 deg 10 ROP5 200 m/h 0 BS 6 in 16 GRMA 0 gAPI 200			<b>MD (m) 1:200</b>	A40H 0.2 ohm.m 2000			0.00 0.15 0.25 0.35 0.45 0.56 0.66 0.76 0.86 1.01	VDL		
				A34H 0.2 ohm.m 2000				ST_Projection_SCOPE -347.47		
				P22H 0.2 ohm.m 2000				SPR_MH 40 us/ft 240		
				P34H 0.2 ohm.m 2000				DTCO_MH 40 us/ft 240		
				0.2 ohm.m 2000				WF VDL - R 6 0 us 3000 TICO 0 us 3000		

Company: IODP  
 Well: HSM-15A\_B  
 Field: Joides Resolution  
 Country: New Zealand



Date Logged: 23-Dec-2017      Date Processed: 28-Dec-2017  
 Well Location: Longitude: 178° 53' 45.618" E    Latitude: 38° 51' 32.202" S

Elevations:      DF: 11m      GL: -2637m