

**geoVISION Resistivity
1:240 Measured Depth
Recorded Mode Data**



Company: IODP

Well: U1519A

Field: HSM-01A

Rig Name: Joides Resolution

Expedition: 372

Country: New Zealand

Latitude: 38° 43' 38.22" S

Longitude: 178° 36' 51.24" E

Block: EXP372

UWID:

Rig Name:

Rig Type:

Joides Resolution
Drill Ship

FL1:

FL2:

Log Measured From: - Drill Floor: 11.00 m
Permanent Datum: - Mean Sea Level

Ground Level: 1004.00 m

Acquisition Dates: 23-Dec-2017 -- 25-Dec-2017

Log Interval: 1010.00(m) -- 1665.00(m)

Index Types: Measured Depth

Index Scales: 1:240

Depth Source: Driller's Depth

Depth Sensor: DES

Print Type: Final

Spud Date: 24-Dec-2017

Other Services:

SonicScope

proVISION Plus

geoVISION Images

StethoScope

Disclaimer

THE USE OF AND RELIANCE UPON THIS RECORDED-DATA BY THE HEREIN NAMED COMPANY (AND ANY OF ITS AFFILIATES, PARTNERS, REPRESENTATIVES, AGENTS, CONSULTANTS AND EMPLOYEES) IS SUBJECT TO THE TERMS AND CONDITIONS AGREED UPON BETWEEN SCHLUMBERGER AND THE COMPANY, INCLUDING: (a) RESTRICTIONS ON USE OF THE RECORDED-DATA; (b) DISCLAIMERS AND WAIVERS OF WARRANTIES AND REPRESENTATIONS REGARDING COMPANY'S USE AND RELIANCE UPON THE RECORDED-DATA; AND (c) CUSTOMER'S FULL AND SOLE RESPONSIBILITY FOR ANY INFERENCE DRAWN OR DECISION MADE IN CONNECTION WITH THE USE OF THIS RECORDED-DATA.

Run 1

FINAL GVR LOG 1

Software Version

Acquisition System		Version	
Maxwell 2017 SP3		7.3.92069.3100	
Computation	Description	Version	
RAB6Res	RAB6 Resistivity Computation Package for both Real-time and Recorded Mode	7.3.92069.3100	
RAB6GR	RAB6 Gamma Ray Computation Package for both Real-time and Recorded Mode	7.3.92069.3100	
SoftwareVersion_Tool	SoftwareVersion_System Version	SoftwareVersion_Loaded Version	
HSPM	20.3c.062	7.3.92069.3100	
Tool Elements	Description	Software Version	Firmware Version
DRILLING_SURFACE	DRILLING_SURFACE	7.3.92069.3100	
RBEC	Electronics Chassis Assembly for RAB6-C	7.3.92069.3100	V8.6B

Pass Summary

Run Name	Pass Objective	Direction	Top	Bottom	Start	Stop	Include Parallel Data
Run 1	Drilling	Down	963.70 m	1664.56 m	23-Dec-2017 8:07:26 PM	25-Dec-2017 4:25:47 PM	Yes

All depths are referenced to toolstring zero

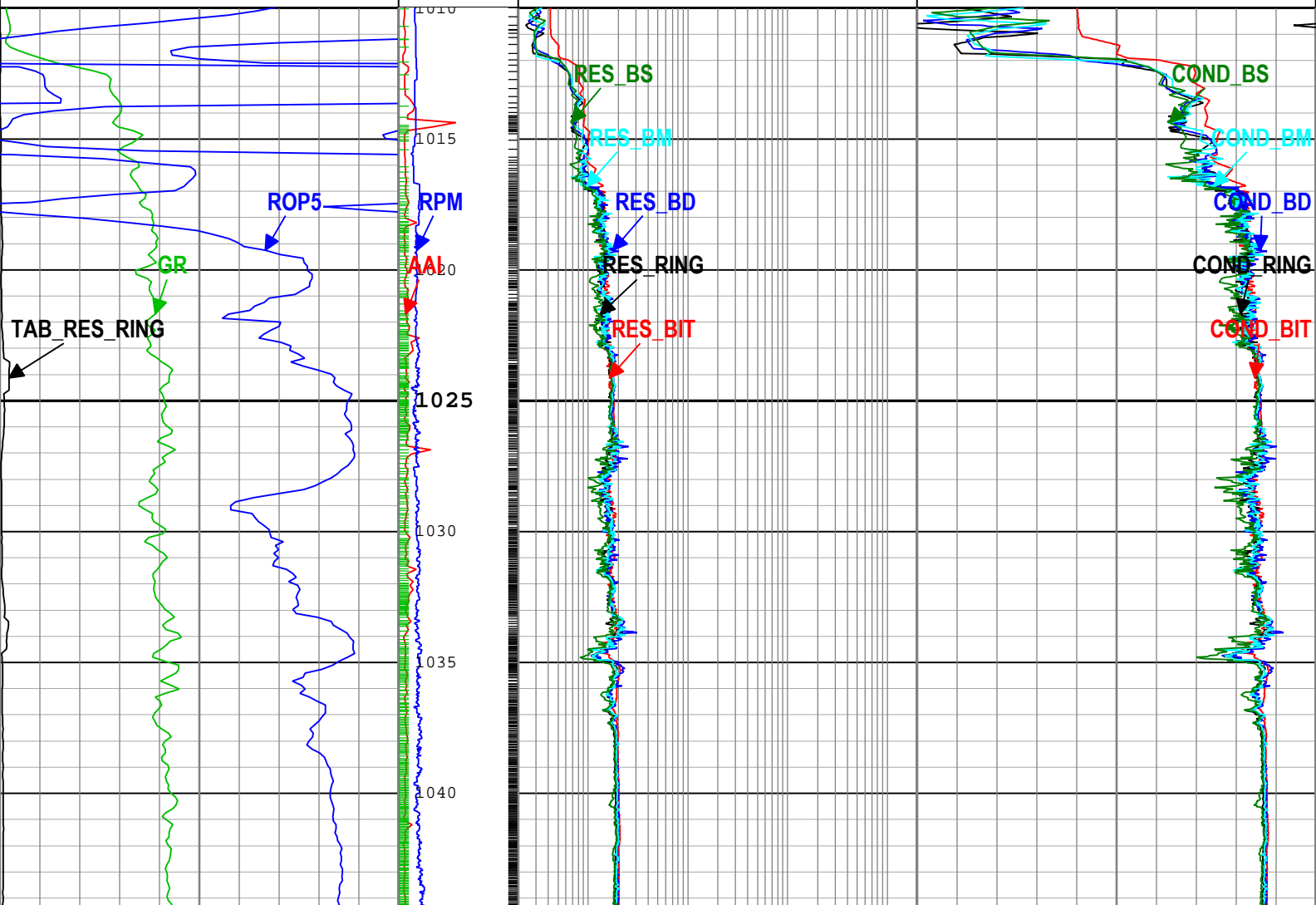
Log	Company: IODP	Well: U1519A
	Run 1: Drilling: S020	

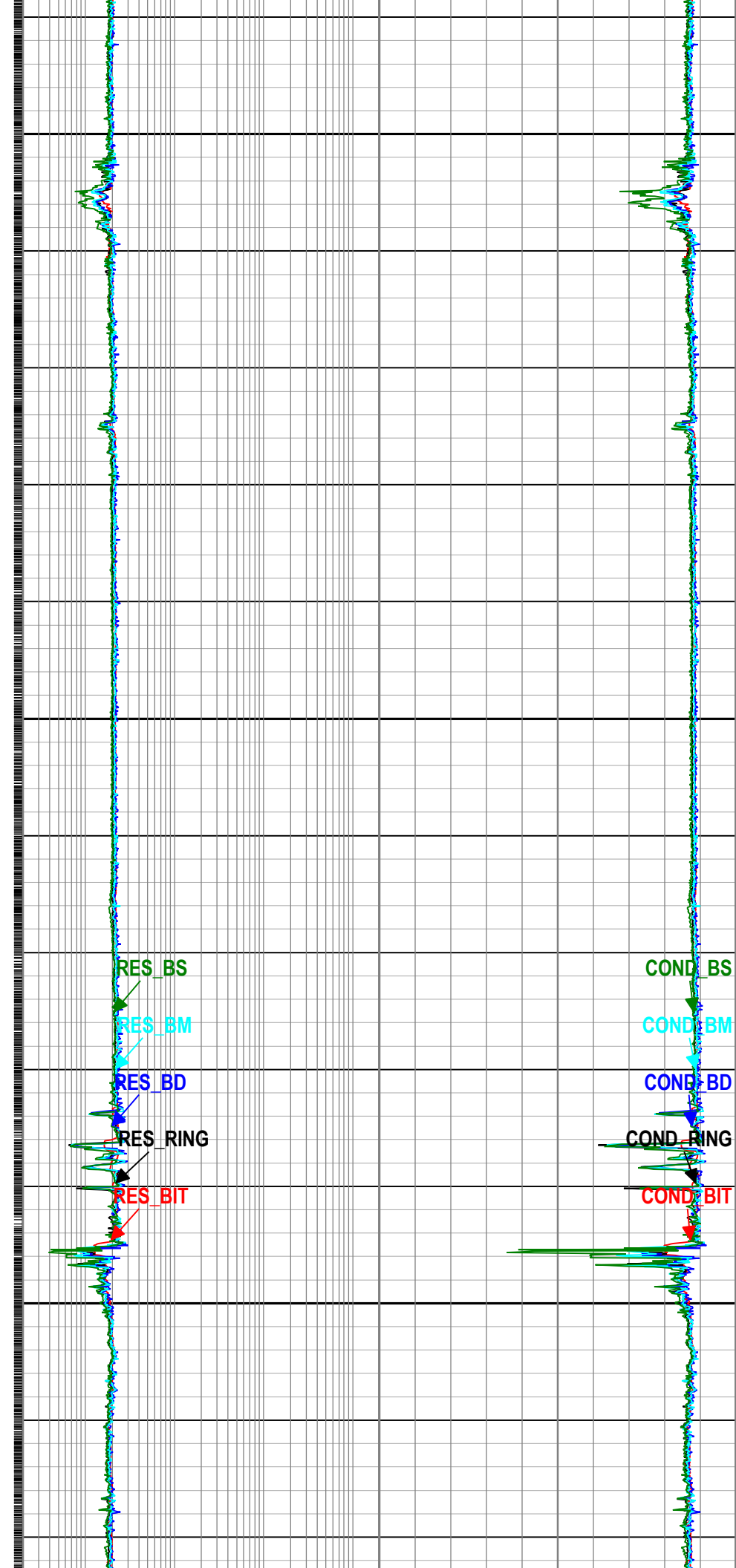
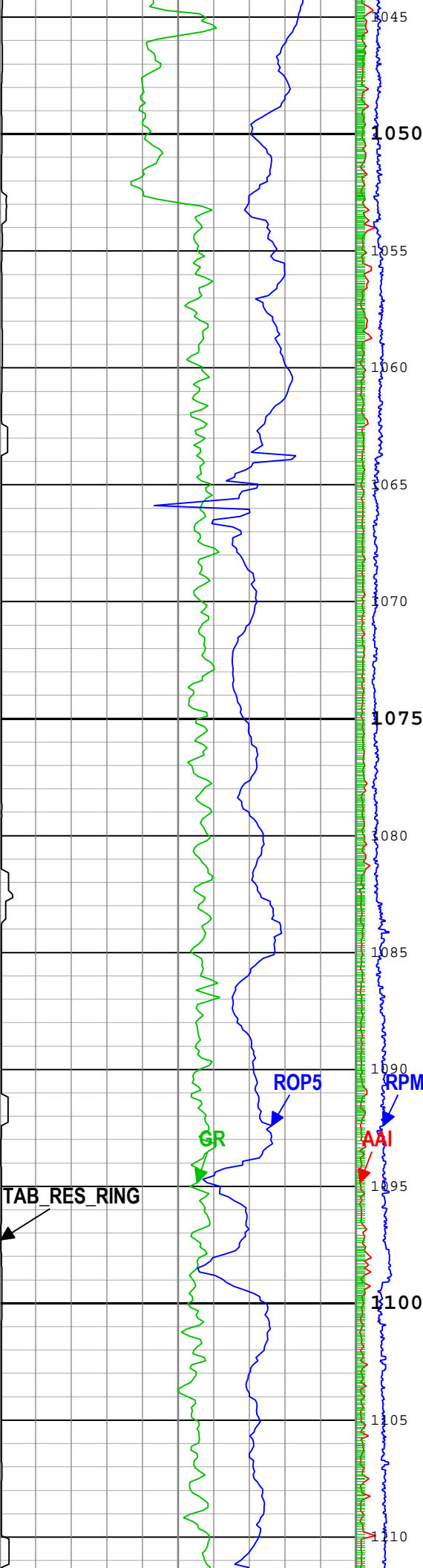
Description: GVR Resistivity Conductivity Format: Log (FINAL GVR LOG 1) Index Scale: 1:240 Index Unit: m Index Type: Measured Depth Creation Date: 30-Dec-2017 00:53:12

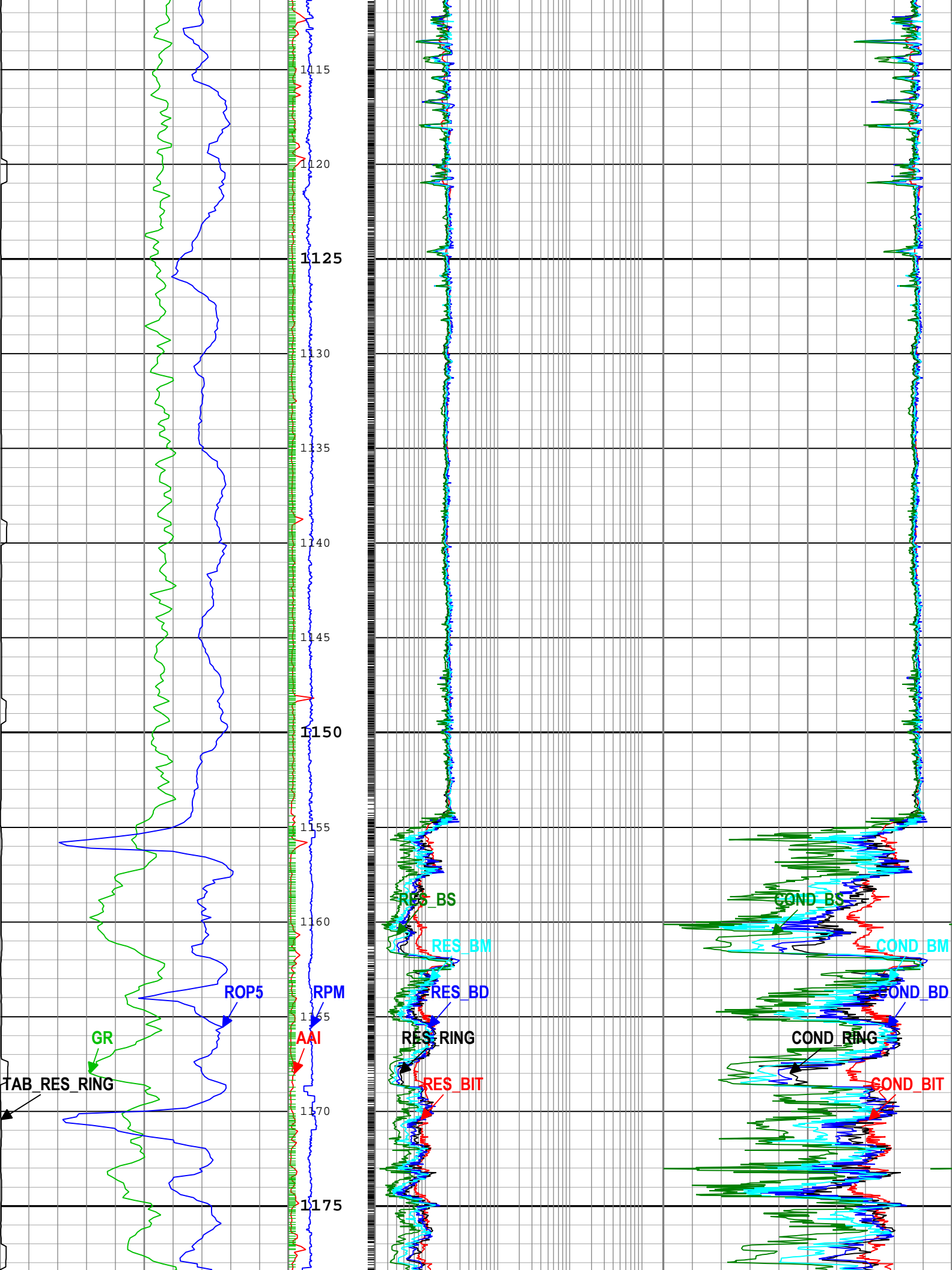
┆ TICKS_GR - Gamma Ray Tick Marks RAB6 RM

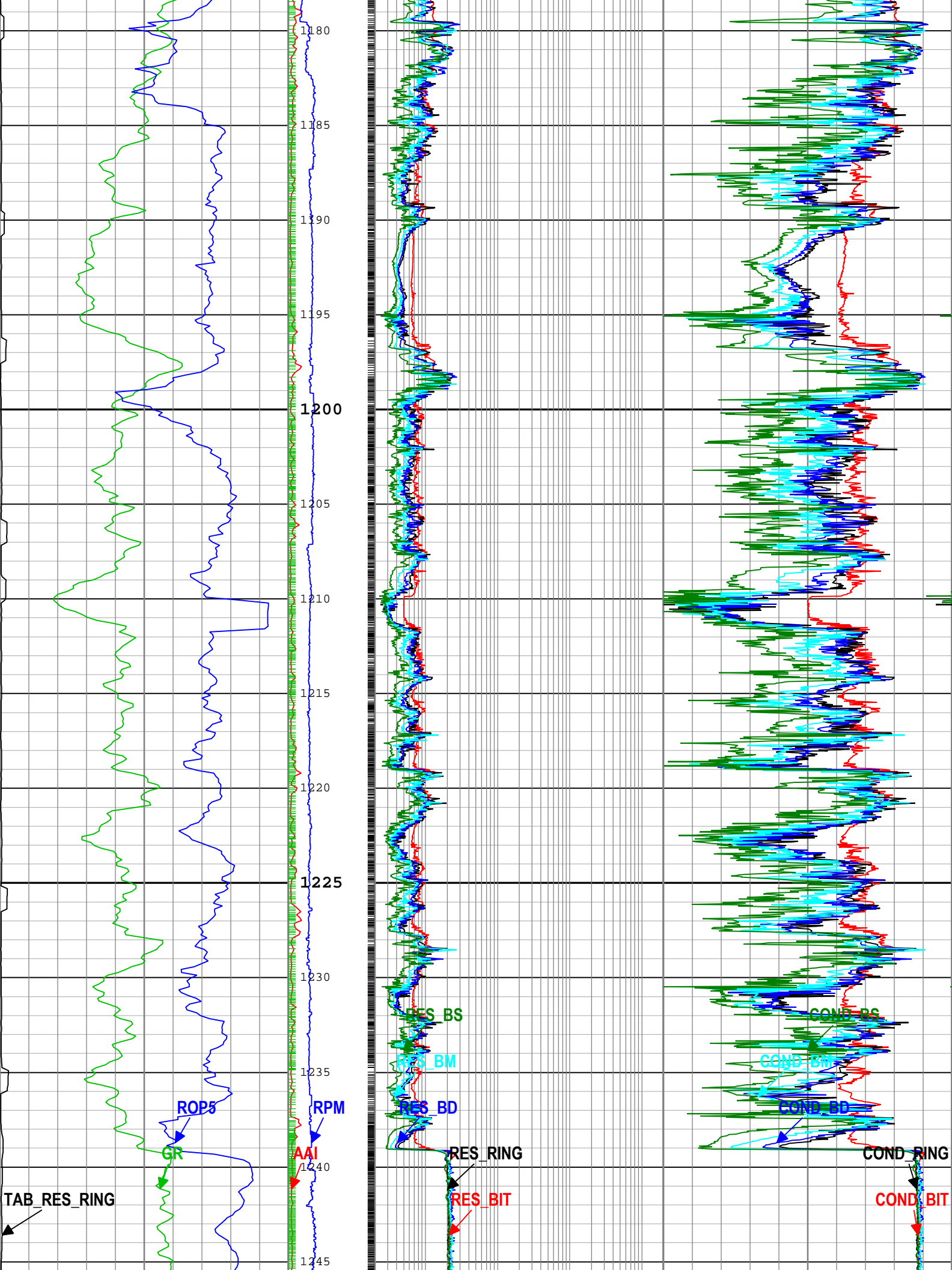
┆ TICKS_RING - Ring Sample Tick Marks RAB6 RM

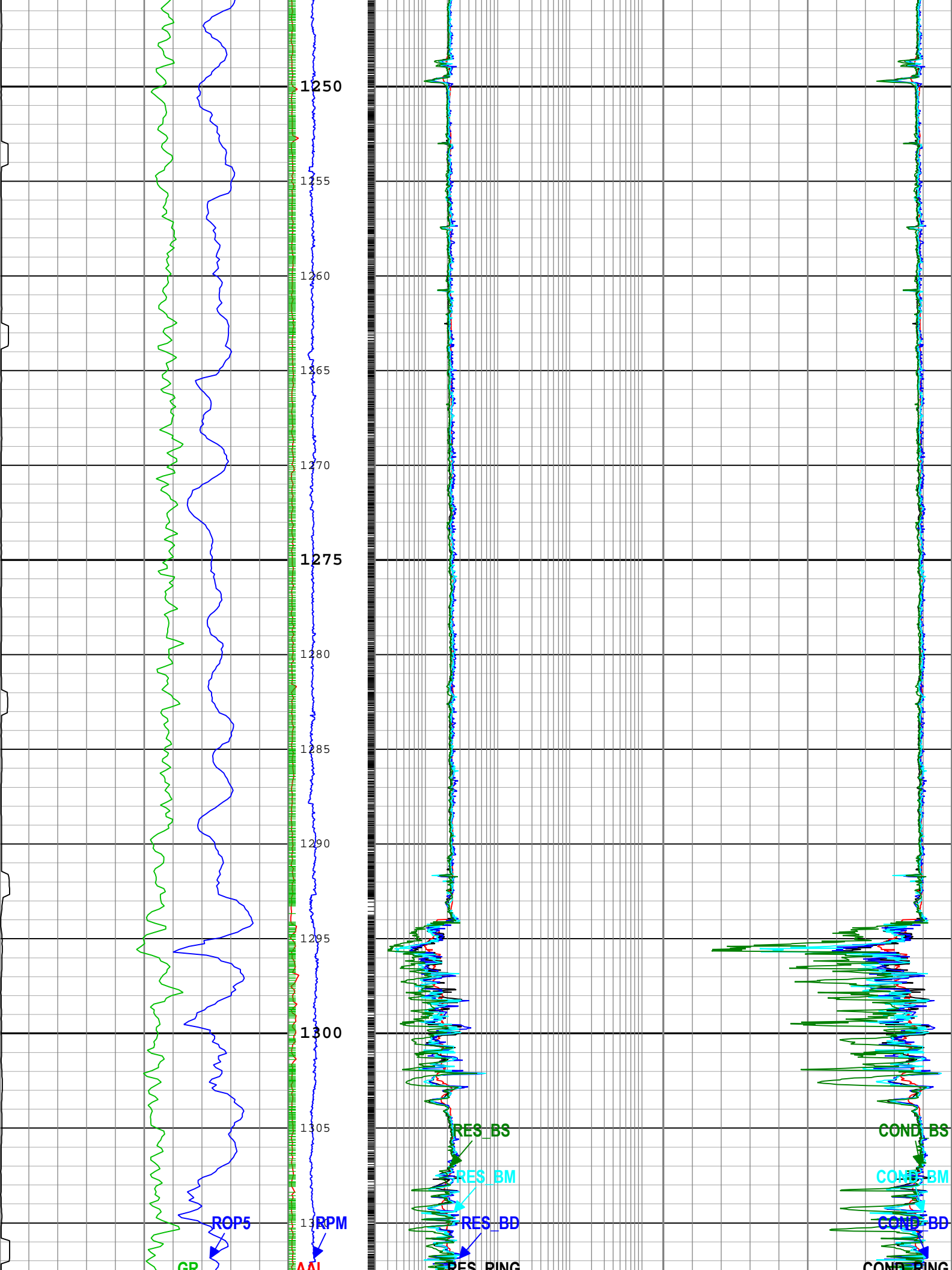
Ring Resistivity Time After Bit (TAB_RES_RING) RAB6		Angular Acceleration Indicator (AAI) RAB6 RM		Ring Resistivity (RES_RING) RAB6 RM		Bit Resistivity (RES_BIT) RAB6 RM		Ring Conductivity (COND_RING) RAB6 RM	
0	h	10		0.2	ohm.m	2000	4000	mS/m	0
Gamma Ray (GR) RAB6 RM		0		Deep Button Resistivity (RES_BD) RAB6 RM		4000		mS/m	
0	gAPI	150		Medium Button Resistivity (RES_BM) RAB6 RM		4000		mS/m	
Rate of penetration averaged over the last 5 ft (1.5 m) (ROP5) RT		0		Shallow Button Resistivity (RES_BS) RAB6 RM		4000		mS/m	
100	m/h	0		Deep Button Conductivity (COND_BD) RAB6 RM		4000		mS/m	
		0		Medium Button Conductivity (COND_BM) RAB6 RM		4000		mS/m	
		0		Shallow Button Conductivity (COND_BS) RAB6 RM		4000		mS/m	
		0							

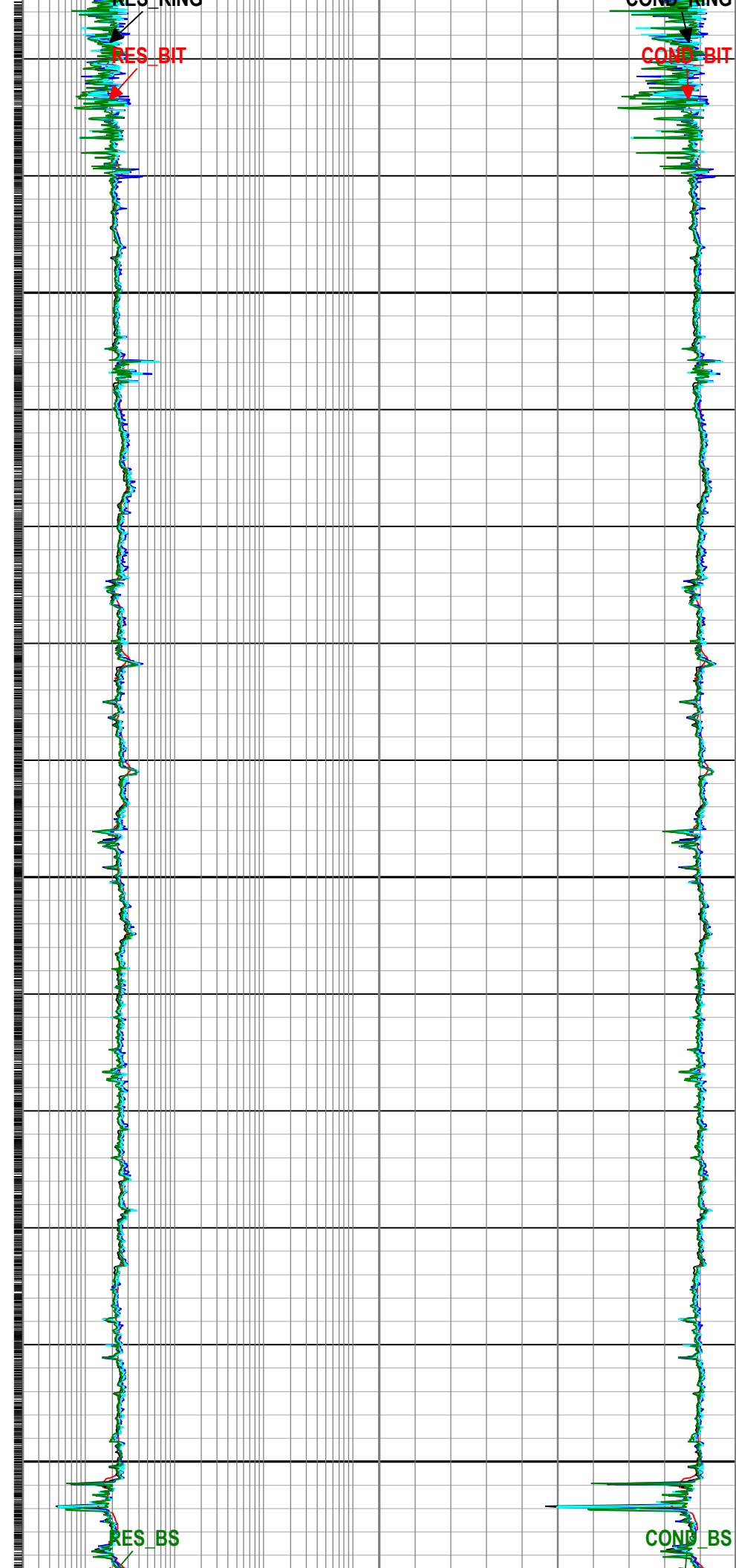


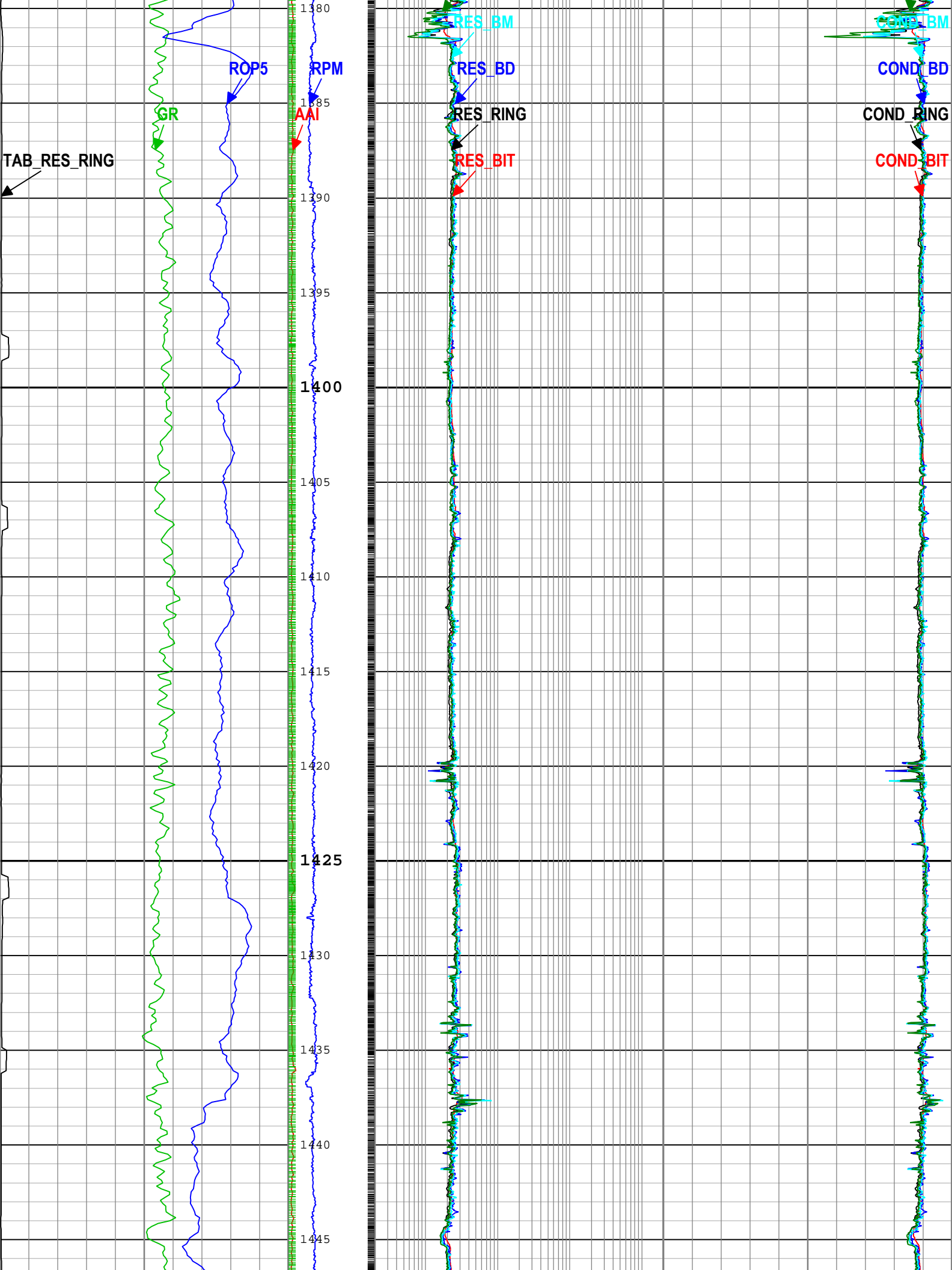


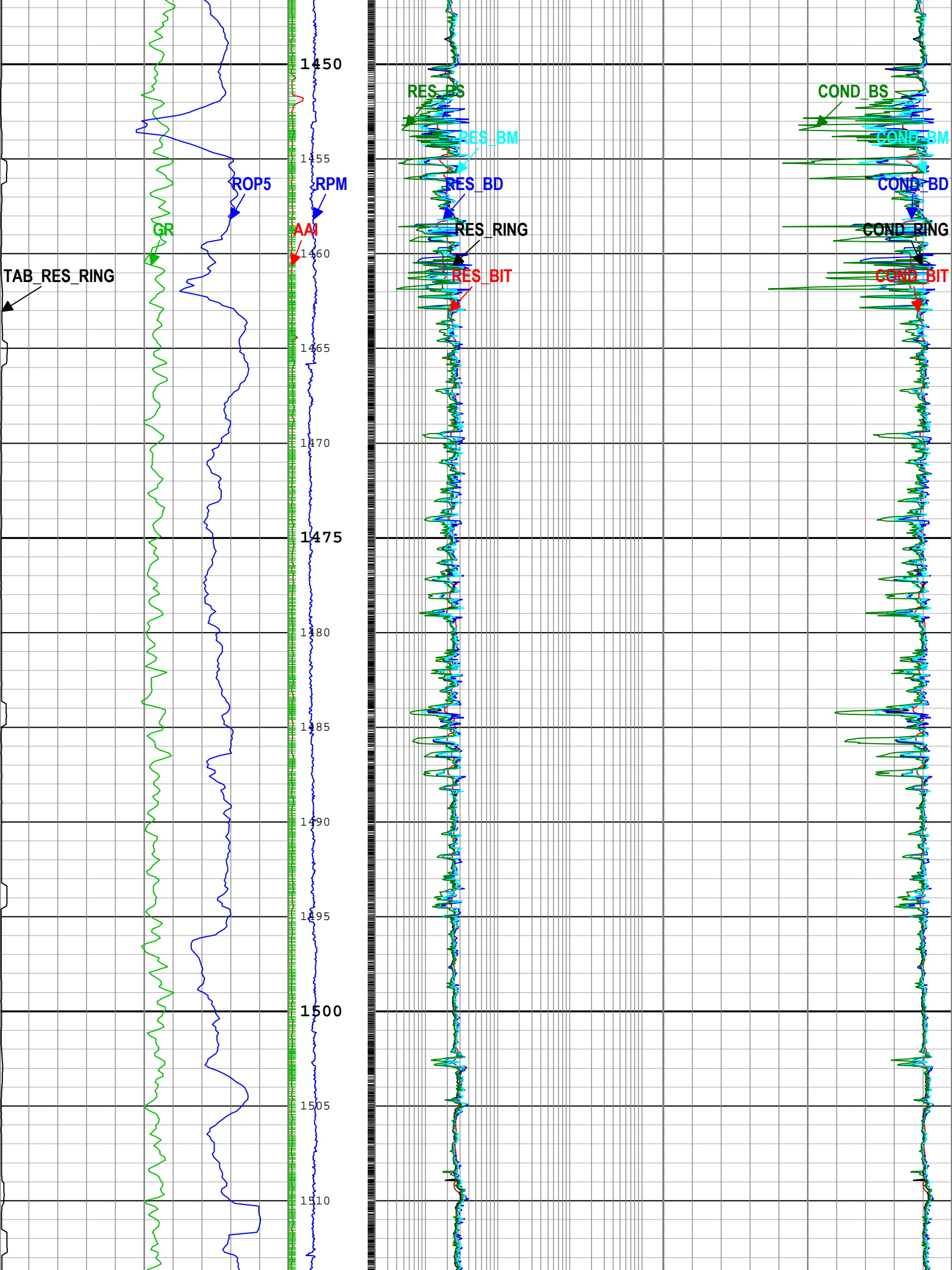


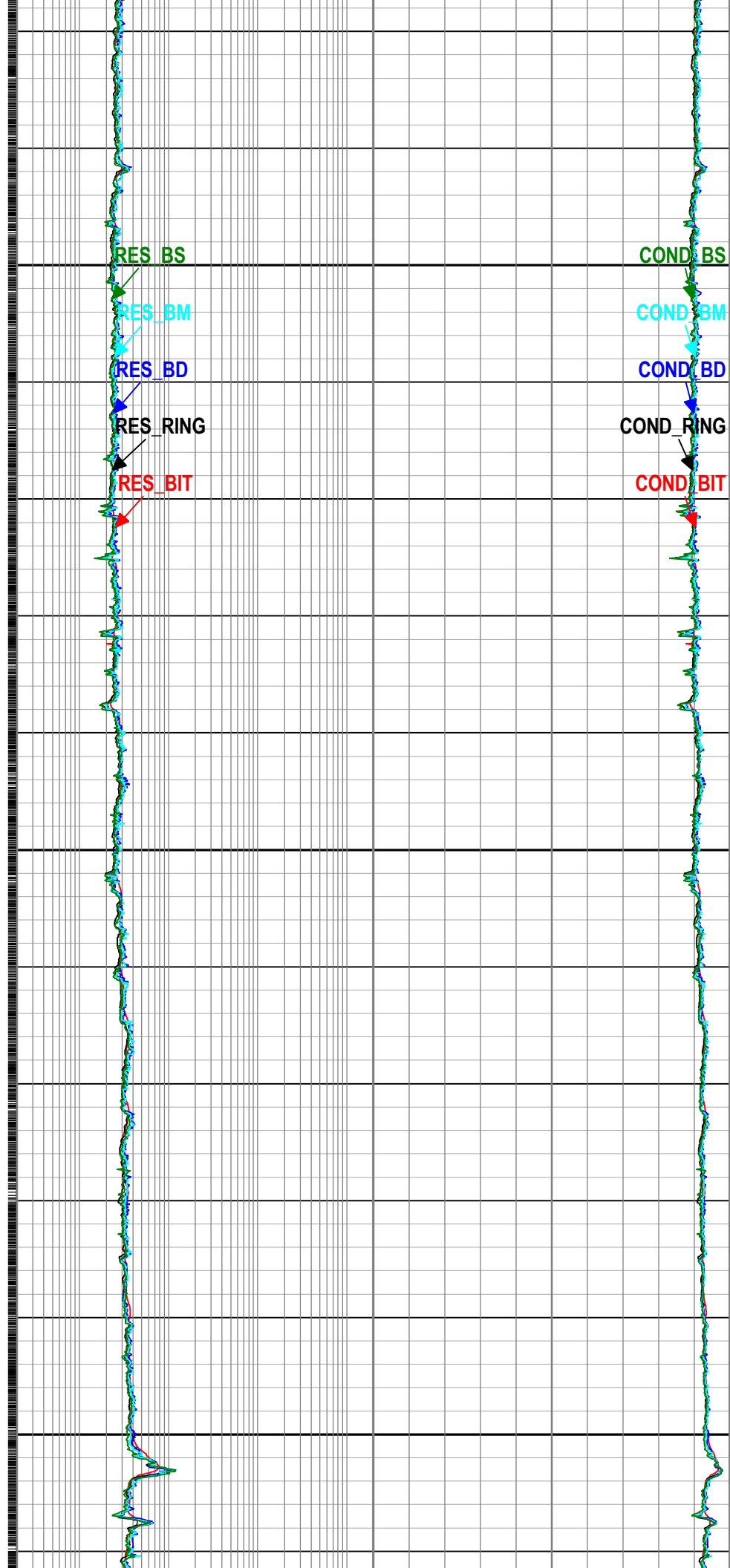


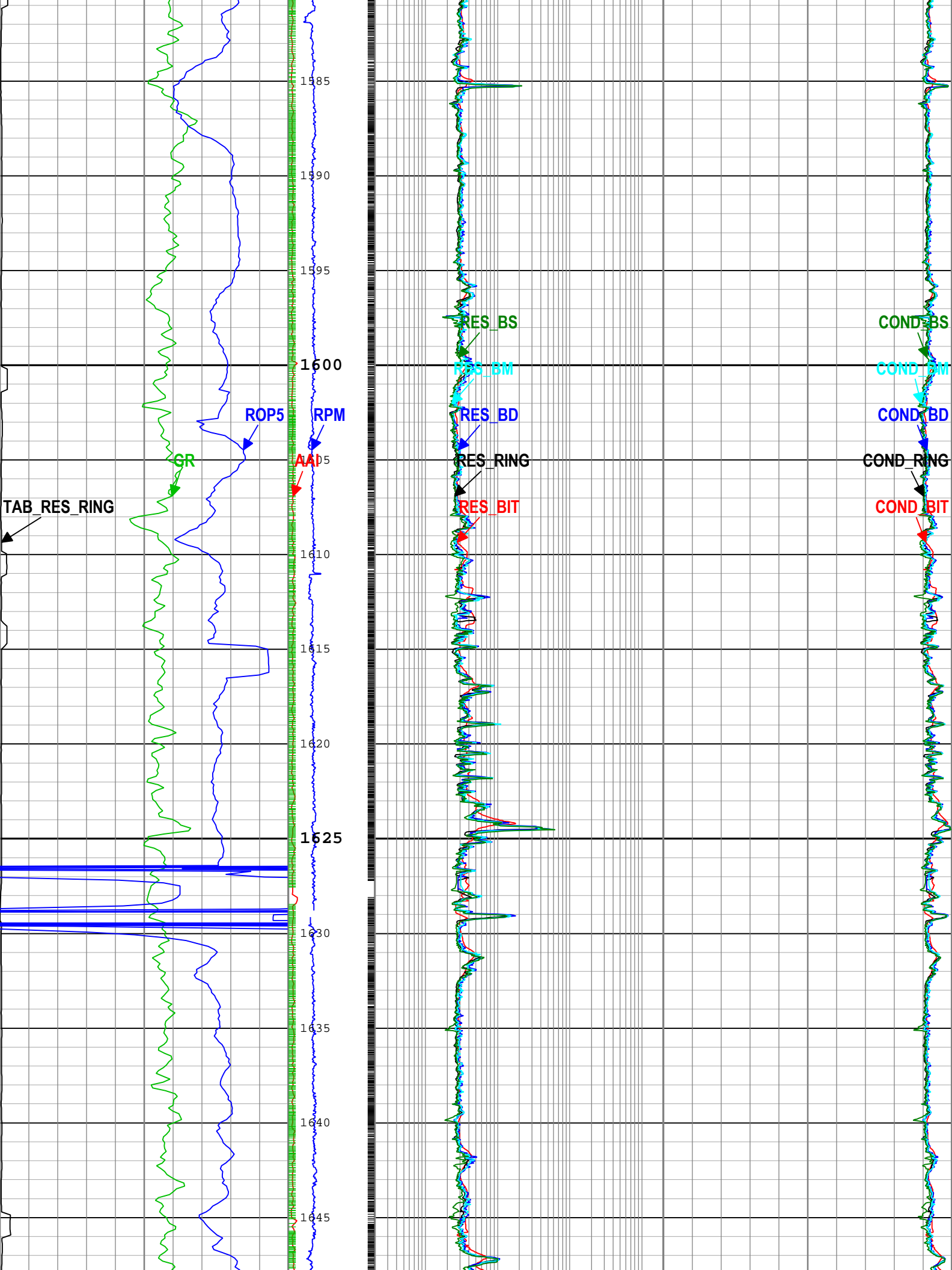


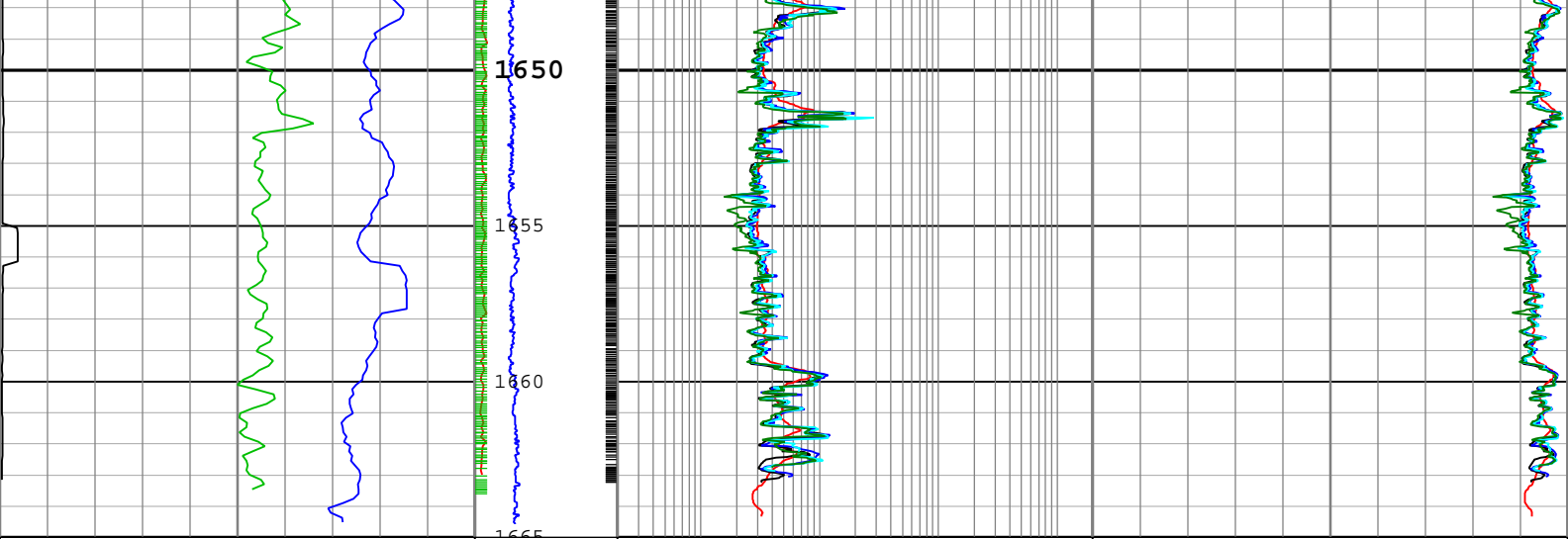












Ring Resistivity Time After Bit (TAB_RES_RING) RAB6 0 h 10	Angular Acceleration Indicator (AAI) RAB6 RM 0 200	Bit Resistivity (RES_BIT) RAB6 RM 0.2 ohm.m 2000	Bit Conductivity (COND_BIT) RAB6 RM 4000 mS/m 0
Gamma Ray (GR) RAB6 RM 0 gAPI 150	Rotational Speed (RPM) RAB6 RM 0 c/min 200	Ring Resistivity (RES_RING) RAB6 RM 0.2 ohm.m 2000	Ring Conductivity (COND_RING) RAB6 RM 4000 mS/m 0
Rate of penetration averaged over the last 5 ft (1.5 m) (ROP5) RT 100 m/h 0		Deep Button Resistivity (RES_BD) RAB6 RM 0.2 ohm.m 2000	Deep Button Conductivity (COND_BD) RAB6 RM 4000 mS/m 0
		Medium Button Resistivity (RES_BM) RAB6 RM 0.2 ohm.m 2000	Medium Button Conductivity (COND_BM) RAB6 RM 4000 mS/m 0
		Shallow Button Resistivity (RES_BS) RAB6 RM 0.2 ohm.m 2000	Shallow Button Conductivity (COND_BS) RAB6 RM 4000 mS/m 0

┆TICKS_RING - Ring Sample Tick Marks RAB6 RM

┆TICKS_GR - Gamma Ray Tick Marks RAB6 RM

Description: GVR Resistivity Conductivity Format: Log (FINAL GVR LOG 1) Index Scale: 1:240 Index Unit: m Index Type: Measured Depth Creation Date: 30-Dec-2017 00:53:12

Channel Processing Parameters

Run 1: Parameters

Parameter	Description	Tool	Value	Unit
BHK	Drilling Fluid Potassium Concentration	Borehole	0	%
BHT	Bottom Hole Temperature	Borehole	7	degC
BS	Bit Size	DNMSESSION	8.5	in
DFD	Drilling Fluid Density	Borehole	8.6	lbm/gal
DFT_CATEGORY	Drilling Fluid Type	Borehole	Water	
GRSE_RM	Generalized Mud Resistivity Selection for Recorded Mode	Borehole	REMS(RM)	
GTSE_RM	Generalized Temperature Selection for Recorded Mode	Borehole	DHAT(RM)	
MST	Mud Sample Temperature	Borehole	23.89	degC
RMS	Resistivity of Mud Sample	Borehole	0.2	ohm.m
TEMP_SEL_RAB	RAB Temperature Selection	RAB6	Tool	

Tool Control Parameters

Company: IODP
Well: U1519A
Field: HSM-01A
Rig Name: Joides Resolution
Expedition: 372
Country: New Zealand



geoVISION Resistivity
1:240 Measured Depth
Recorded Mode Data