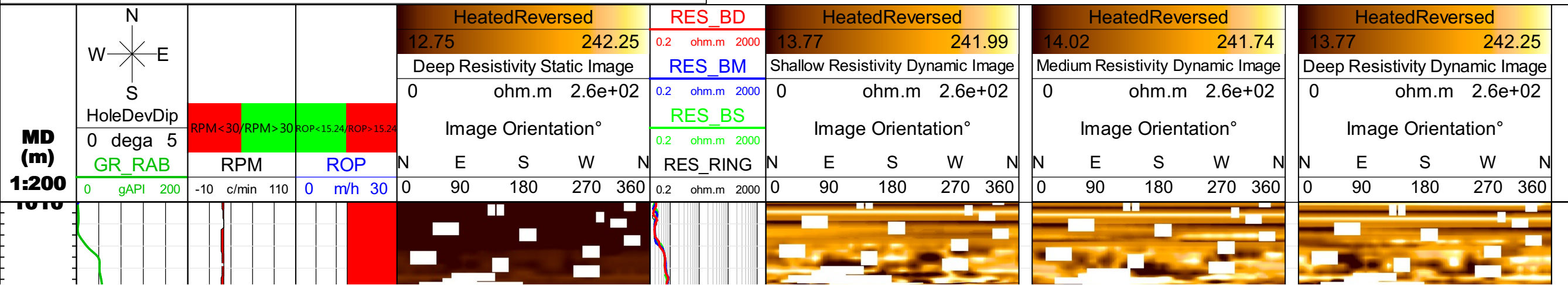


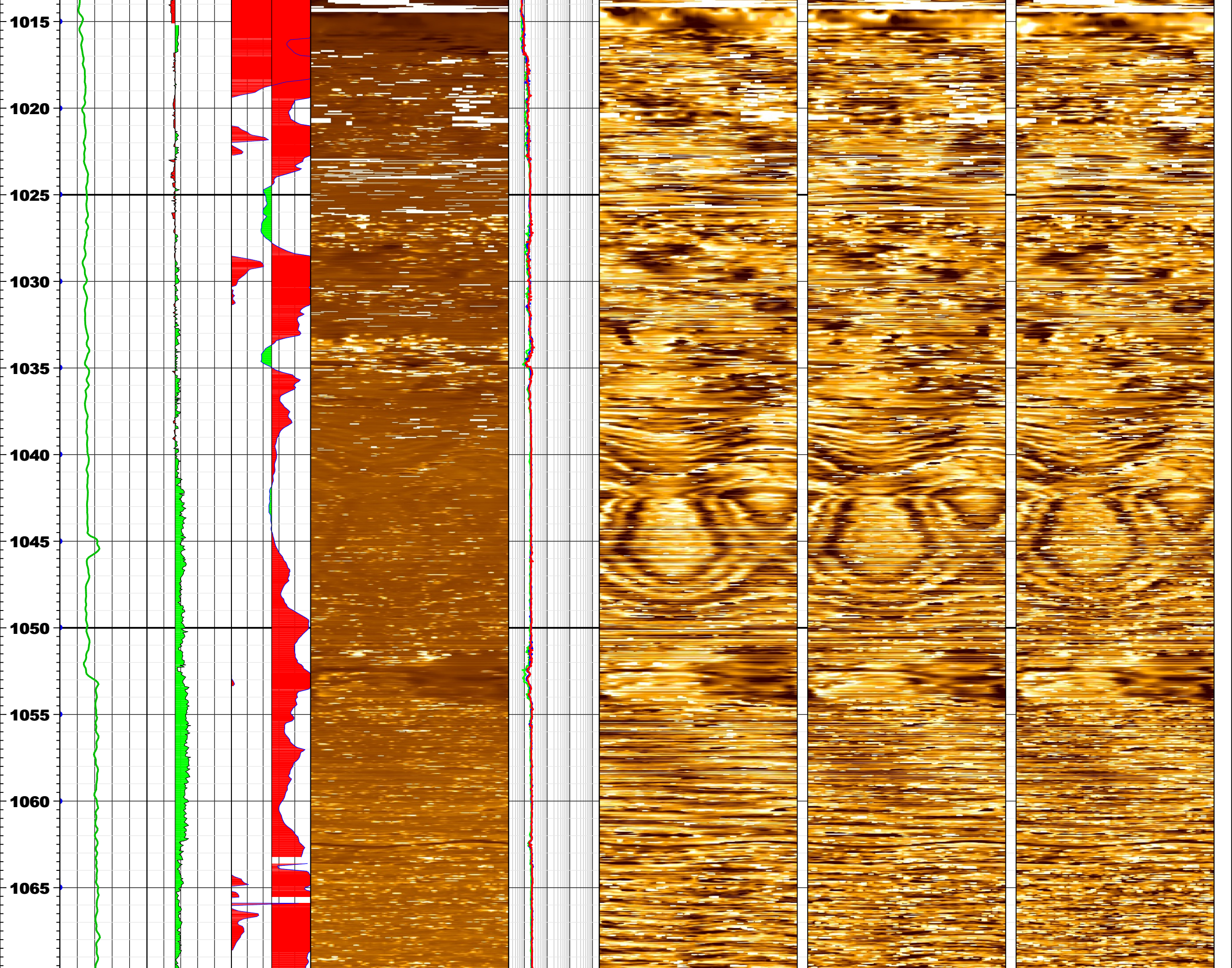
RAB6 (GVR6) Resistivity Processed Images

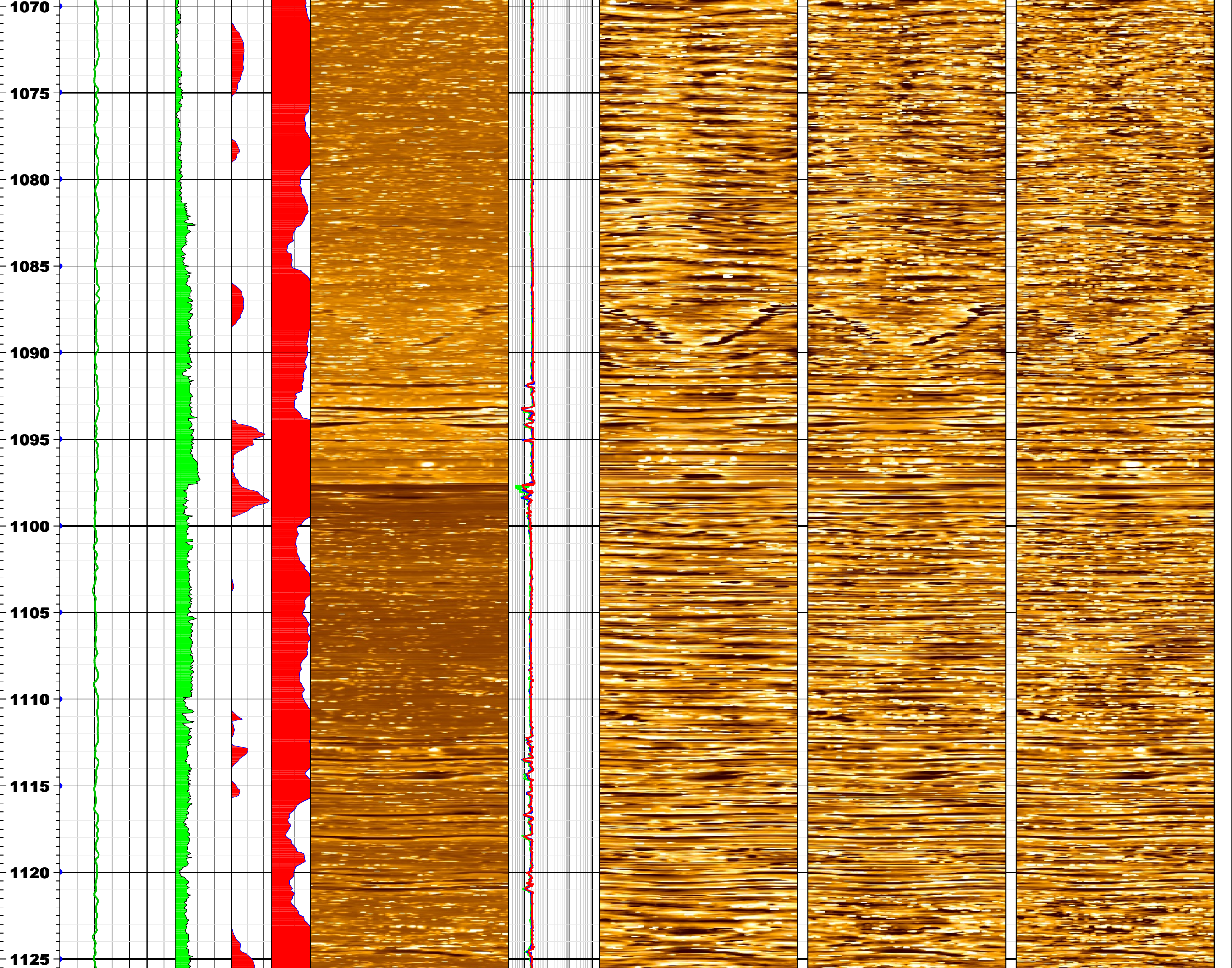
Processed Static & Dynamic Images (Shallow, Medium & Deep) Interval: 1010 - 1663 m MD, Scale: 1:200

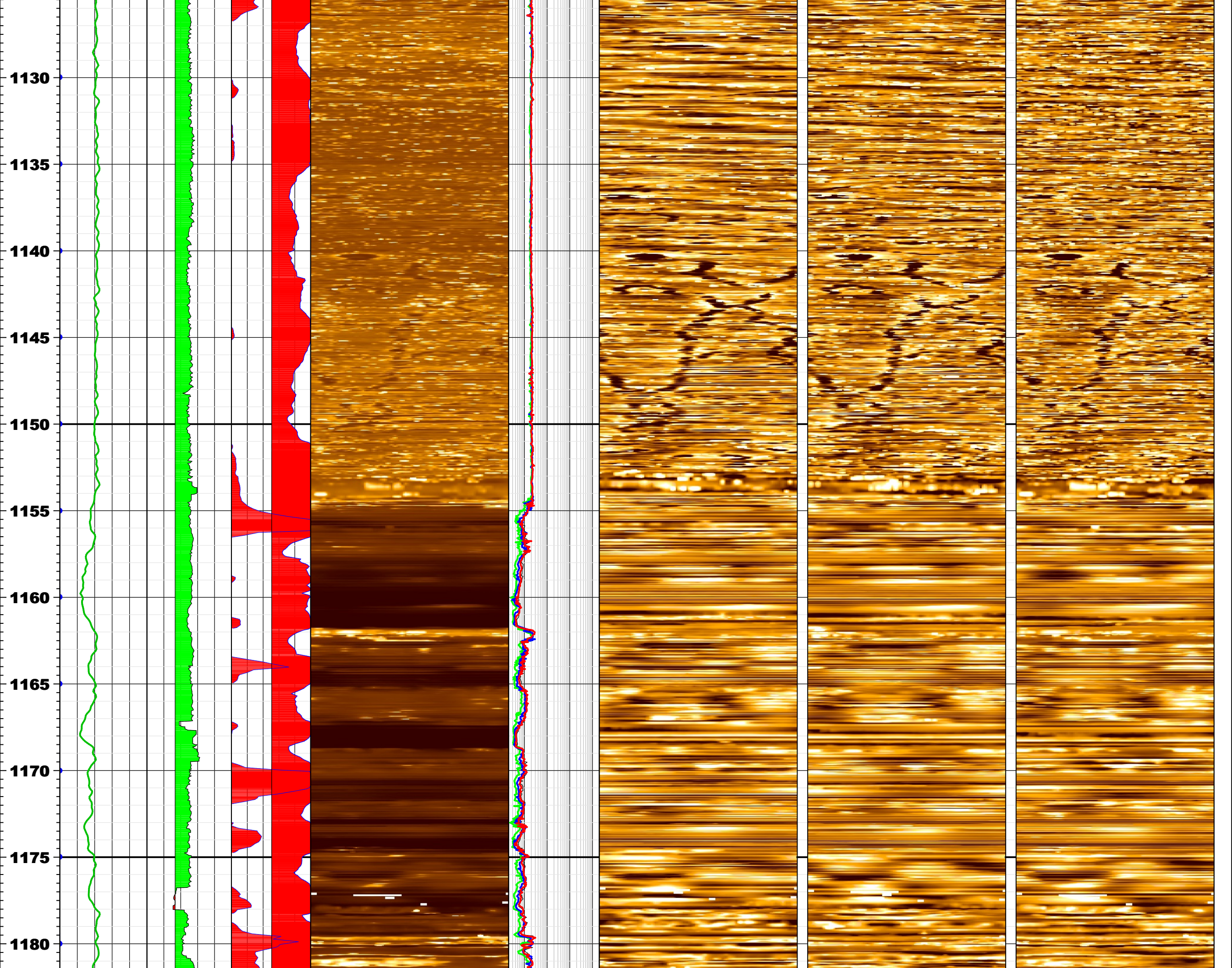
COMPANY: IODP WELL: HSM-01A FIELD: STATE: COUNTRY:	Using the following logs: RAB6-CB (GeoVision Resistivity)	
Date Logged: 23-Dec-2017 Date Processed: 28-Dec-2017 Run no. 1	Field Recording:	
	Location:	Software version: MaxWell 7.3.92069 Engineer: David Pedulla
	Office Recording:	
Depth Driller (m): 1665.0 m Depth Logger (m): 1665.0 m Elevations (m): K.B: 0.0 m D.F: 36.09 m G.L: -3287.4 m Permanent Datum: MSL Log Measured From: DF 36.09 m Above Permanent Datum	Location: DS HUB	Software version: Techlog 2013.4 Geologist: Anup Thorat
	Mud and Borehole Measurements:	
	Rm @ Measured Temperature: 0.200 ohm.m @ 23.889 degC	BHT: 7.0 degC Bitsize: 8.5 inch
	Rmf @ Measured Temperature: 0.150 ohm.m @ 20.0 degC	Fluid in Hole: Sea Water Mud Density: 8.6 lbm/gal
	Rmc @ Measured Temperature: -999.25 ohm.m @ 20.0 degC	Mud pH: -999.25 Fluid Loss: -999.25

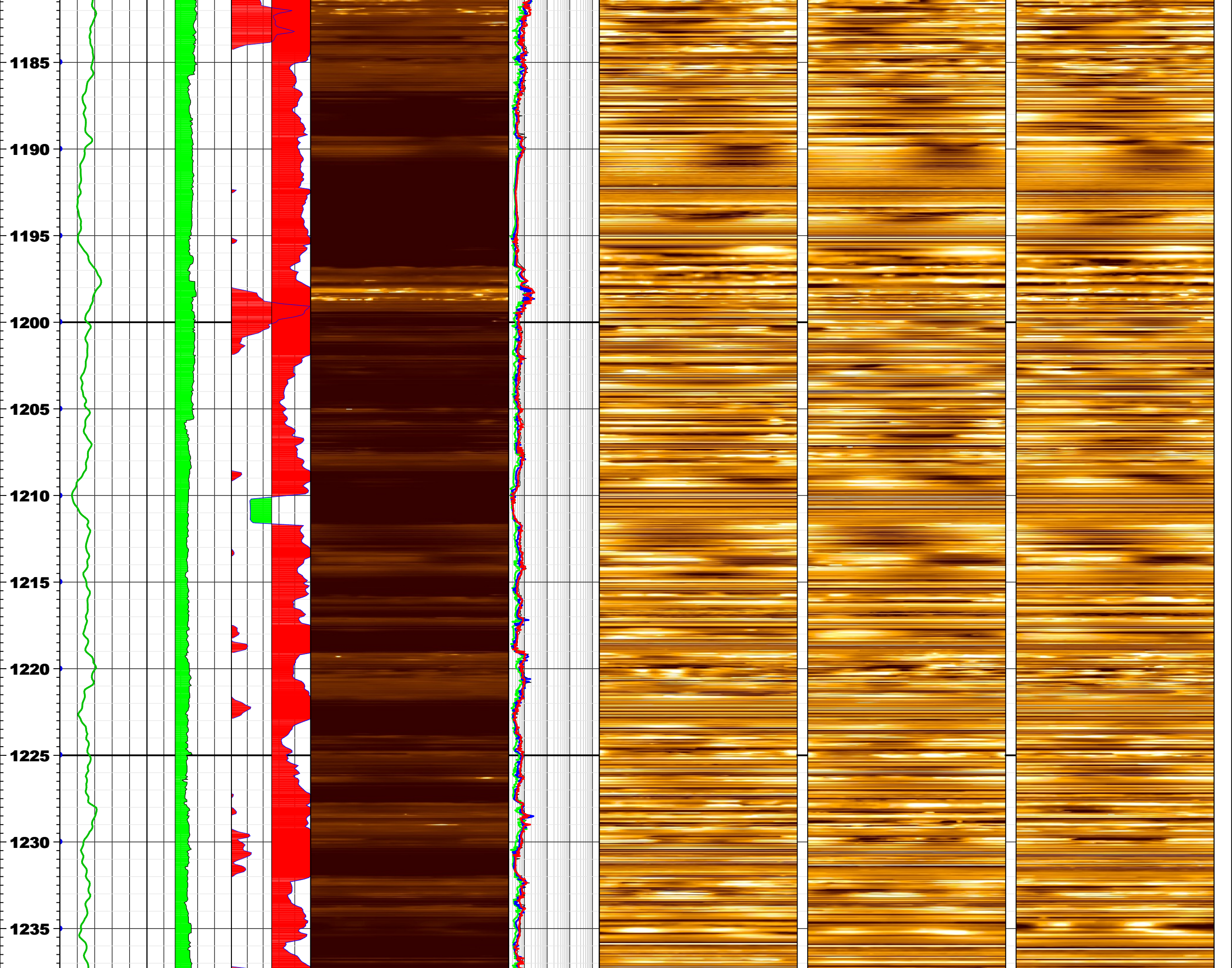
Remarks: Any interpretation, research, analysis, data, results, estimates, or recommendation furnished with the services or otherwise communicated by Schlumberger to the customer at any time in connection with the services are opinions based on inferences from measurements, empirical relationships, and/or assumptions; which, inferences, empirical relationships and/or assumptions are not infallible and with respect to which professionals in the industry may differ. Accordingly, Schlumberger cannot and does not warrant the accuracy, correctness, or completeness of any such interpretation, research, analysis, data, results, estimates, or recommendation. The customer acknowledges that it is accepting the services "as is," that Schlumberger makes no representation or warranty, express or implied, of any kind or description in respect thereto, and that such services are delivered with the explicit understanding and agreement that any action taken based on the services received shall be at its own risk and responsibility, and no claim shall be made against Schlumberger as a consequence thereof.

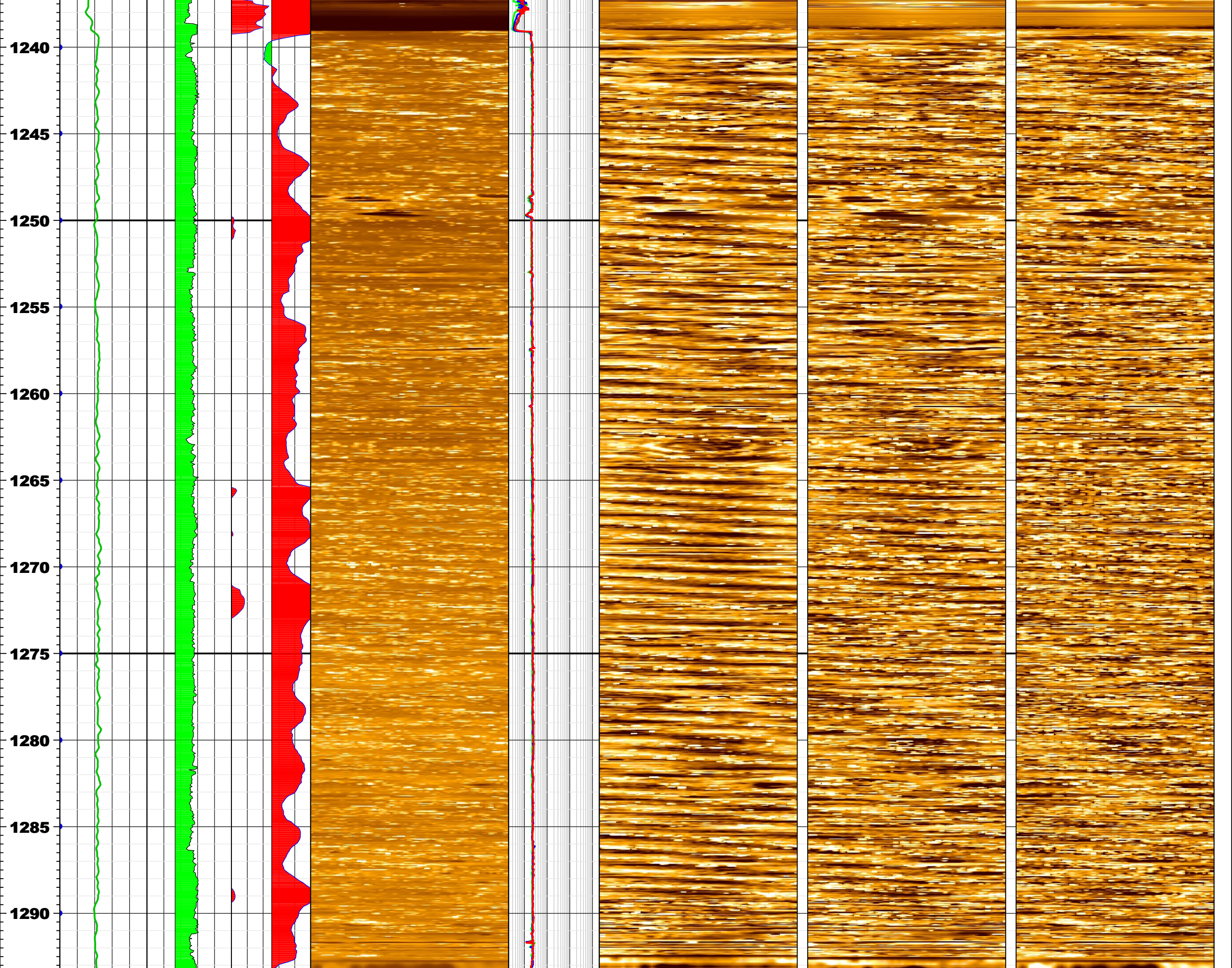


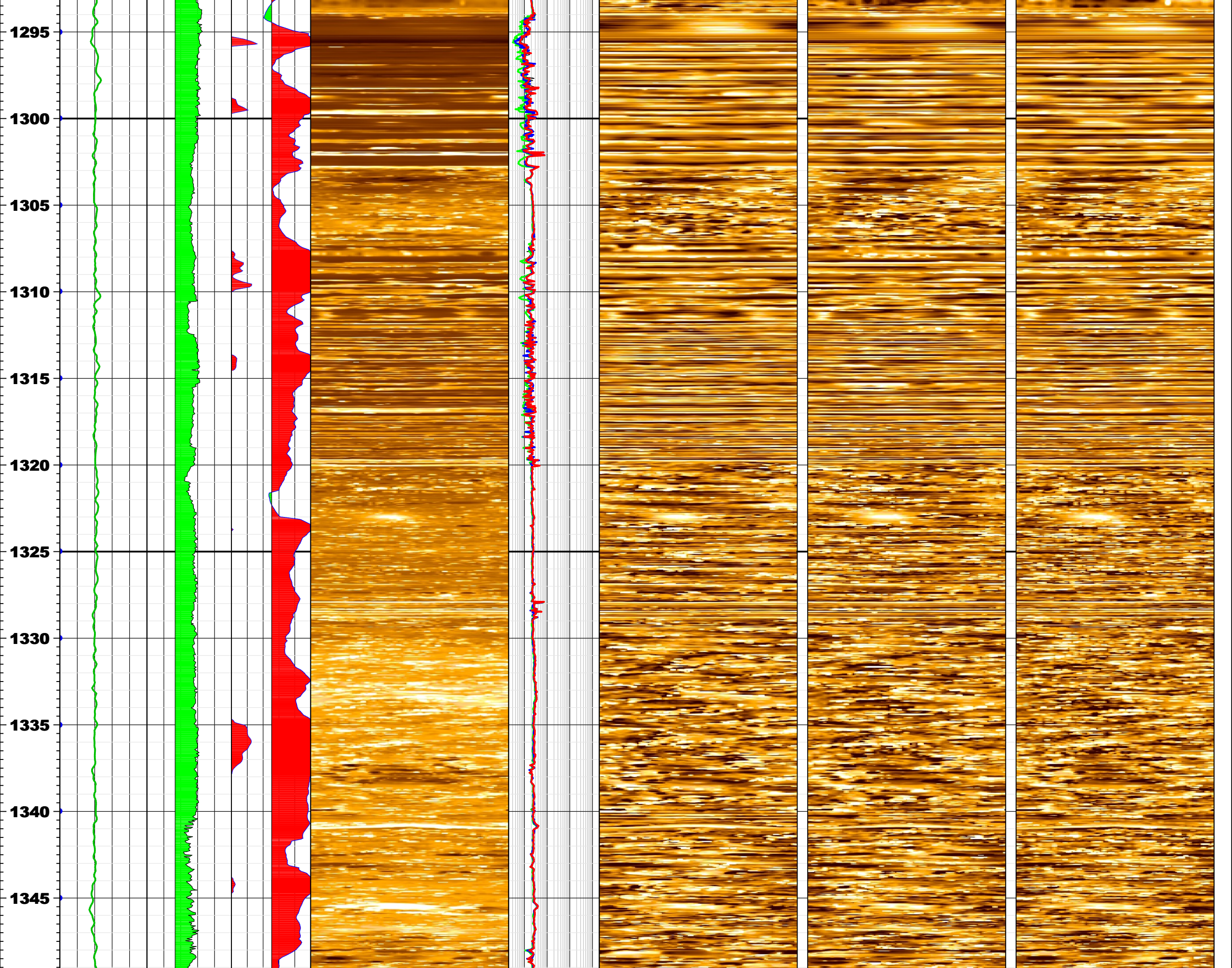


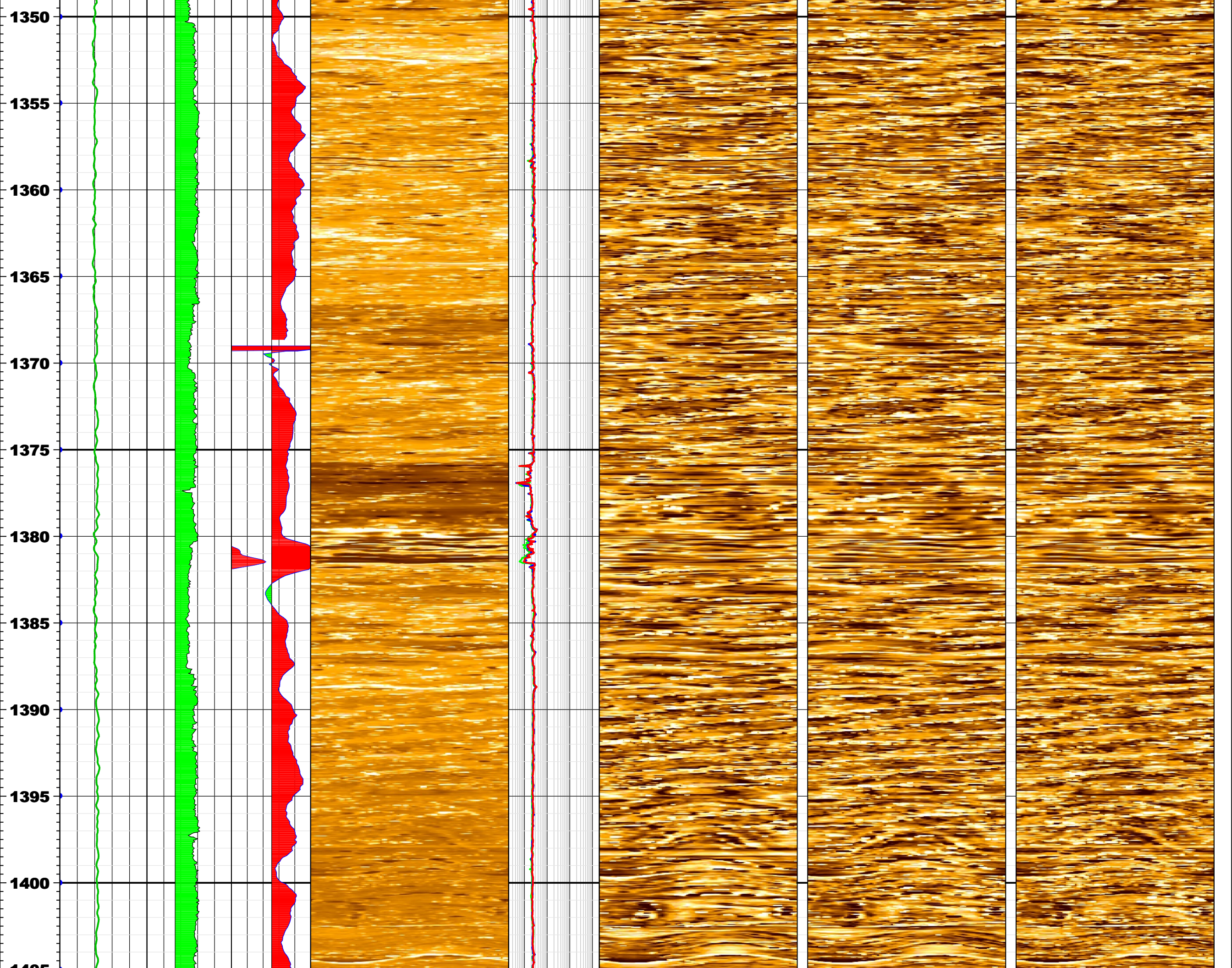


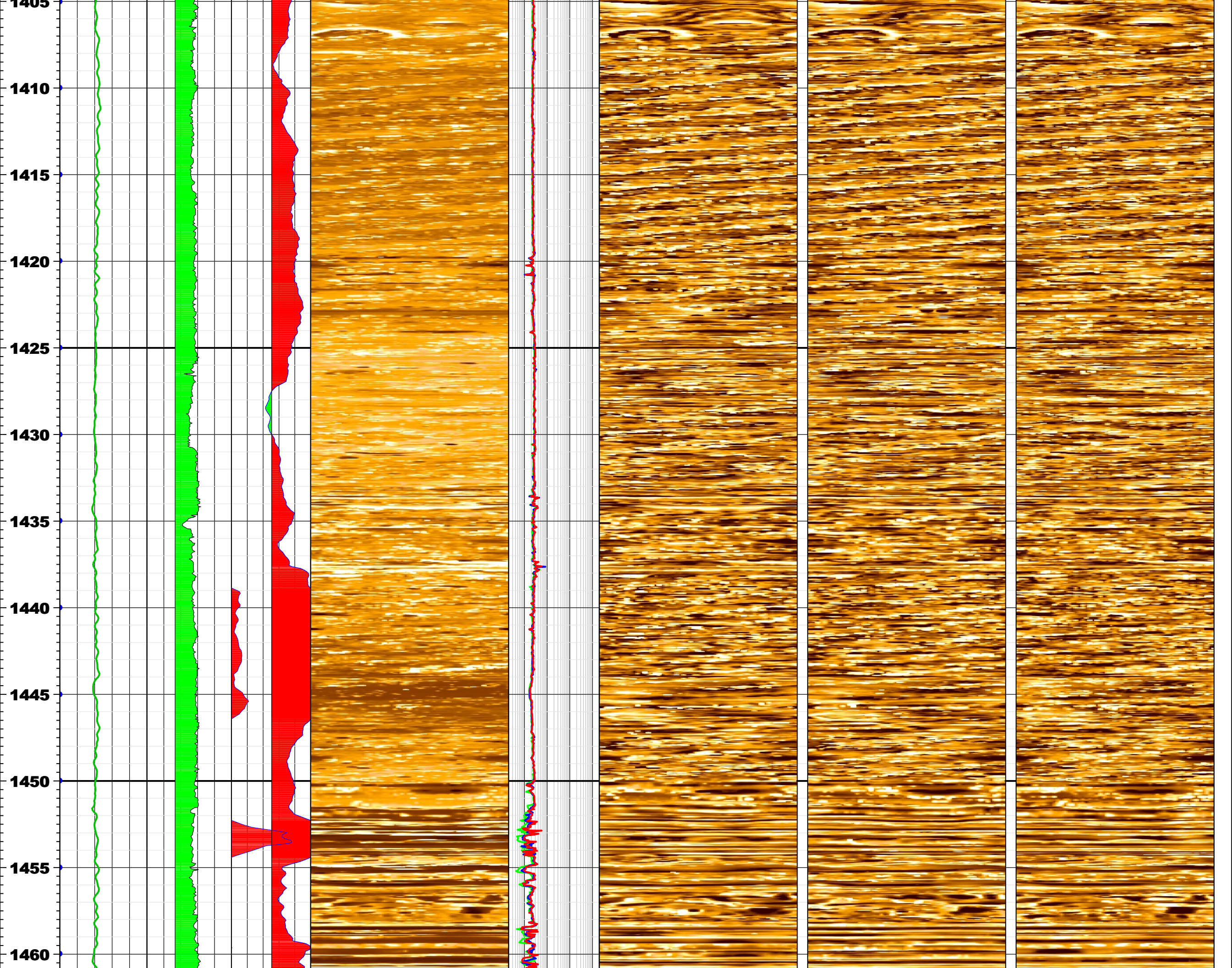


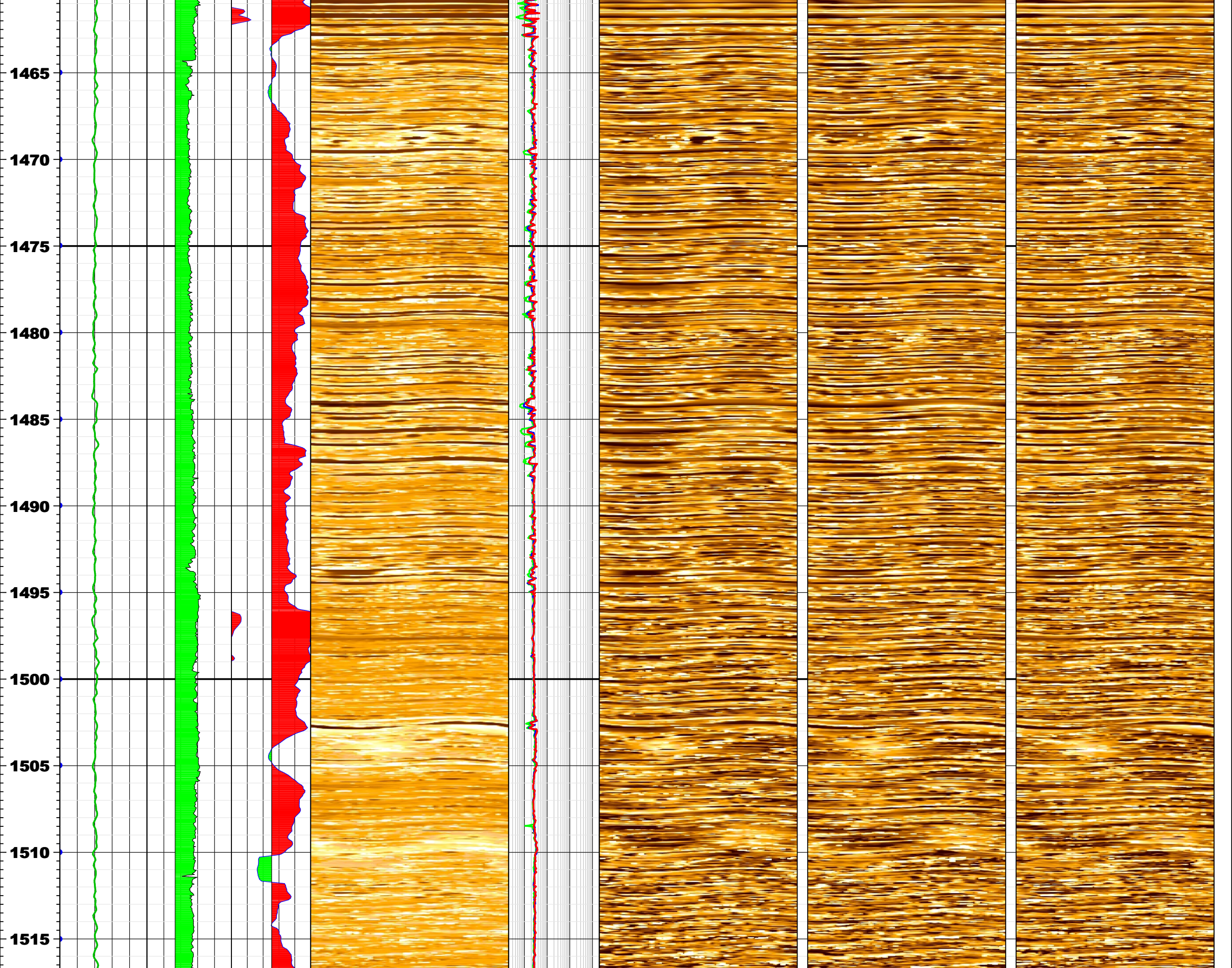


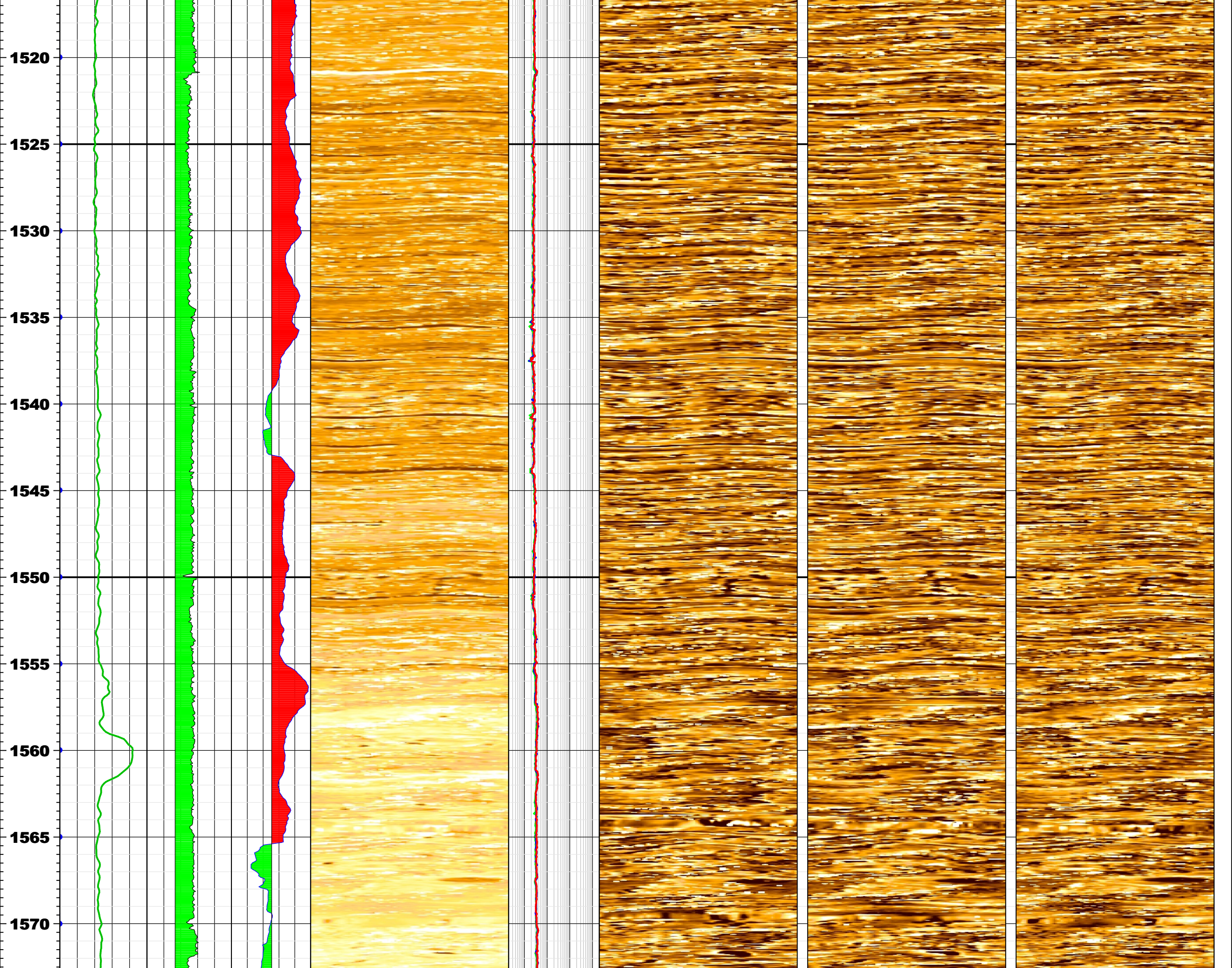


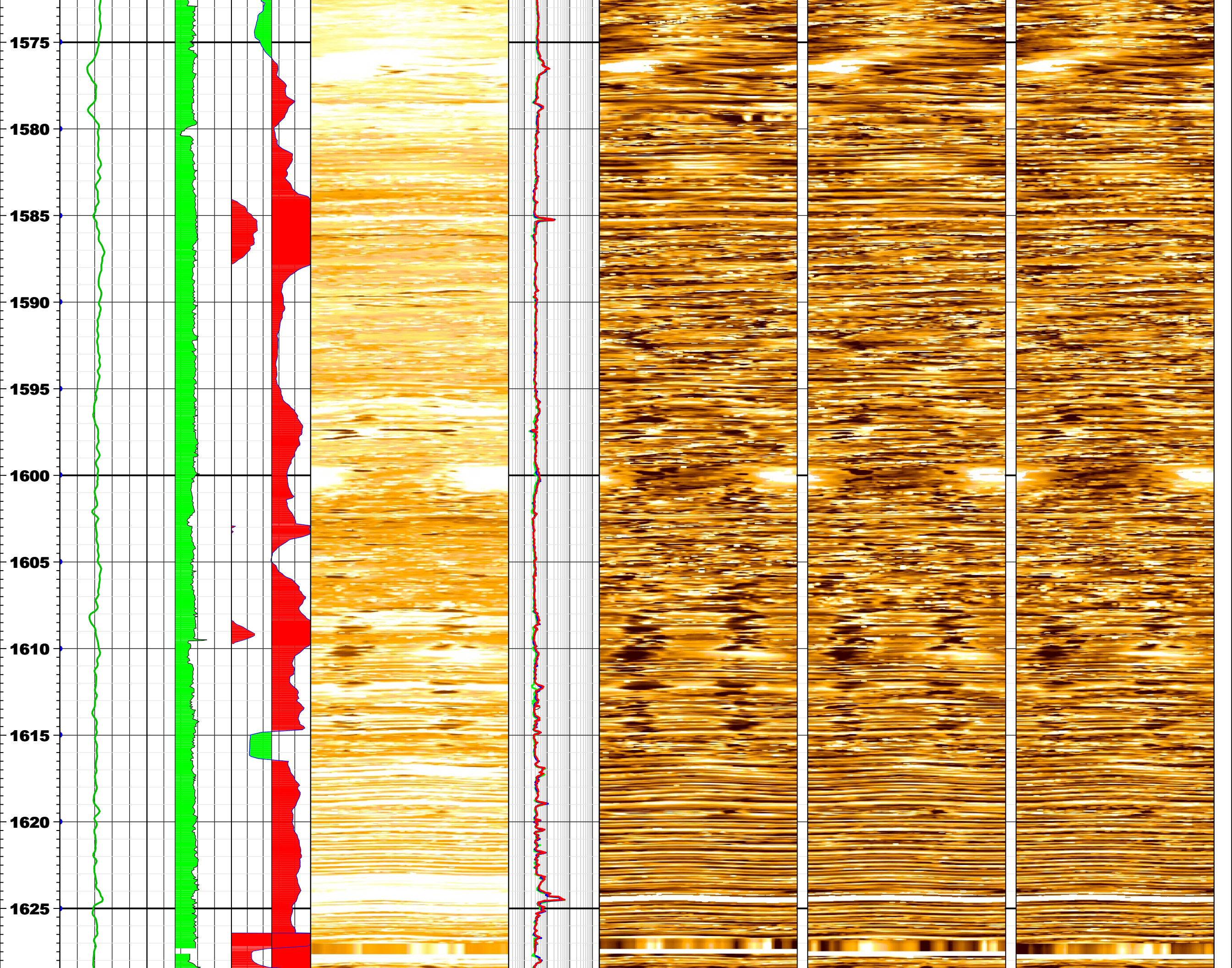


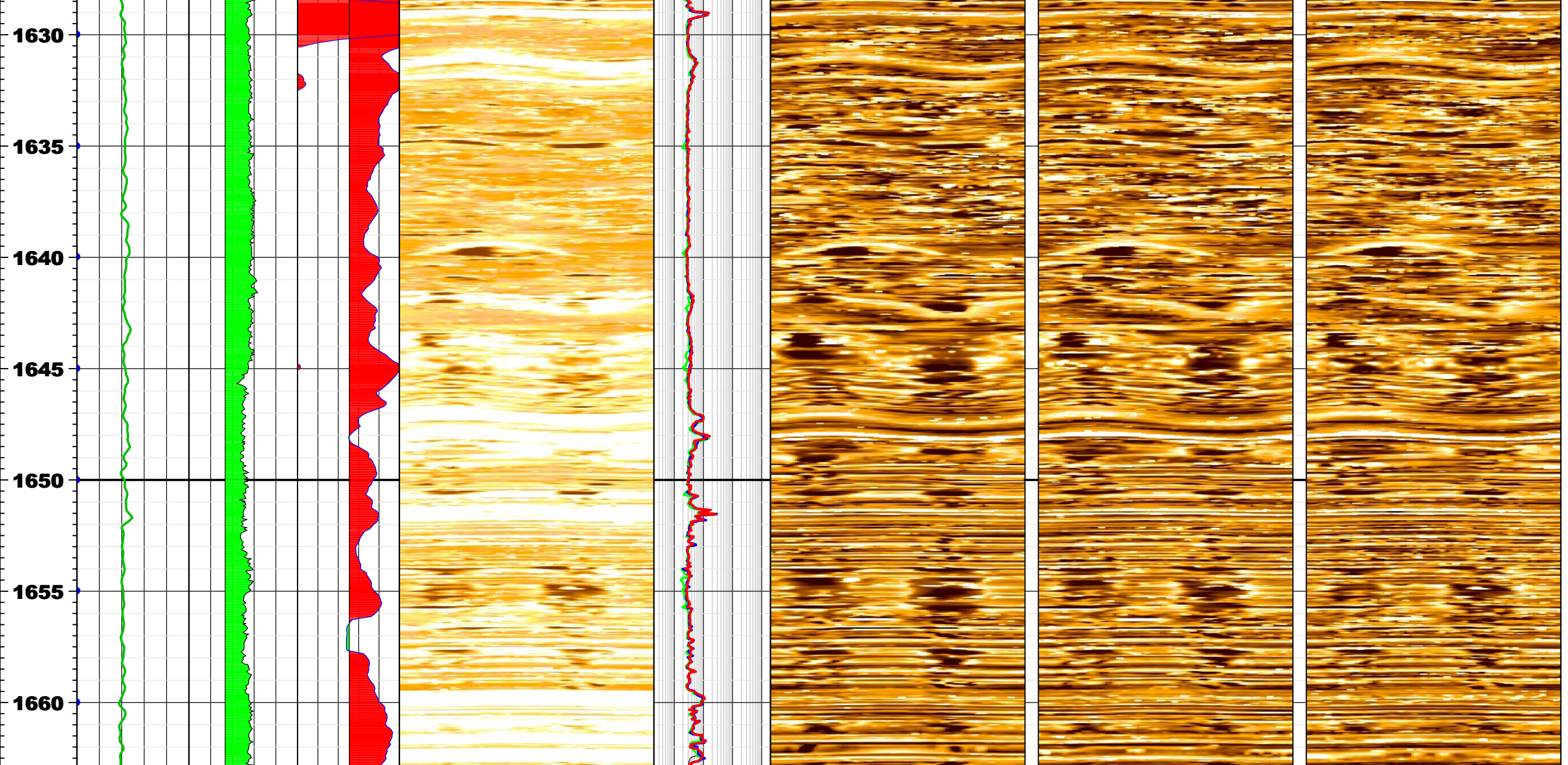












MD (m) 1:200	N W — * — E S			HeatedReversed 12.75 242.25	RES_BD 0.2 ohm.m 2000	HeatedReversed 13.77 241.99	HeatedReversed 14.02 241.74	HeatedReversed 13.77 242.25
	HoleDevDip 0 dega 5			Deep Resistivity Static Image 0 ohm.m 2.6e+02	RES_BM 0.2 ohm.m 2000	Shallow Resistivity Dynamic Image 0 ohm.m 2.6e+02	Medium Resistivity Dynamic Image 0 ohm.m 2.6e+02	Deep Resistivity Dynamic Image 0 ohm.m 2.6e+02
	RPM<30/RPM>30	ROP<15.24/ROP>15.24		Image Orientation°	RES_BS 0.2 ohm.m 2000	Image Orientation°	Image Orientation°	Image Orientation°
	GR_RAB 0 gAPI 200	RPM -10 c/min 110	ROP 0 m/h 30	N E S W N 0 90 180 270 360	N E S W N 0.2 ohm.m 2000	N E S W N 0 90 180 270 360	N E S W N 0 90 180 270 360	N E S W N 0 90 180 270 360