

HSM-01A

SonicScope

Monopole High Compressional Processing QC Plot

\* A Mark of Schlumberger

Using the following logs: SonicScope, NeoScope

COMPANY: IODP

WELL: HSM-01A

FIELD: Joides Resolution

COUNTRY: New Zealand

Date Logged: 25-Dec-2017

Date Processed:

30-Dec-2017

Surface Location Longitude: 178° 36' 51.24" E Latitude: 38° 43' 38.22" S

Elevations: DF: 36.09 m

GL: -3287.4 m

FOLD HERE:

The well name, location and borehole reference data were furnished by the customer.

Any interpretation, research, analysis, data, results, estimates, or recommendation furnished with the services or otherwise communicated by Schlumberger to the customer at any time in connection with the services are opinions based on inferences from measurements, empirical relationships, and/or assumptions; which, inferences, empirical relationships and/or assumptions are not infallible and with respect to which professionals in the industry may differ. Accordingly, Schlumberger cannot and does not warrant the accuracy, correctness, or completeness of any such interpretation, research, analysis, data, results, estimates, or recommendation. The customer acknowledges that it is accepting the services "as is," that Schlumberger makes no representation or warranty, express or implied, of any kind or description in respect thereto, and that such services are delivered with the explicit understanding and agreement that any action taken based on the services received shall be at its own risk and responsibility, and no claim shall be made against Schlumberger as a consequence thereof.

Svc. Order #:	Techlog Vers: 2017.2	Analyst P. Bhuyan	Process Date: 30-Dec-2017
---------------	----------------------	-------------------	---------------------------

Mud and Borehole Measurements:		
Casing Size:	BHT : 7 degC	Bit Size: 8.5 in
Casing ID:	Type Fluid in Hole: Sea Water	
Casing Weight	Mud density: 1.03 gm/cc	

**Remarks:**

Compressional slowness has been processed from Monopole High waveform.  
Data might be affected due to borehole condition and mud contamination.

Processing parameters summary

**Monopole High STC**

**Borehole status:** Open hole  
**Energy threshold:** 3 Pa  
**Filter band high:** 13000 Hz  
**Formation type:** Very slow  
**Dispersion file mode:** None

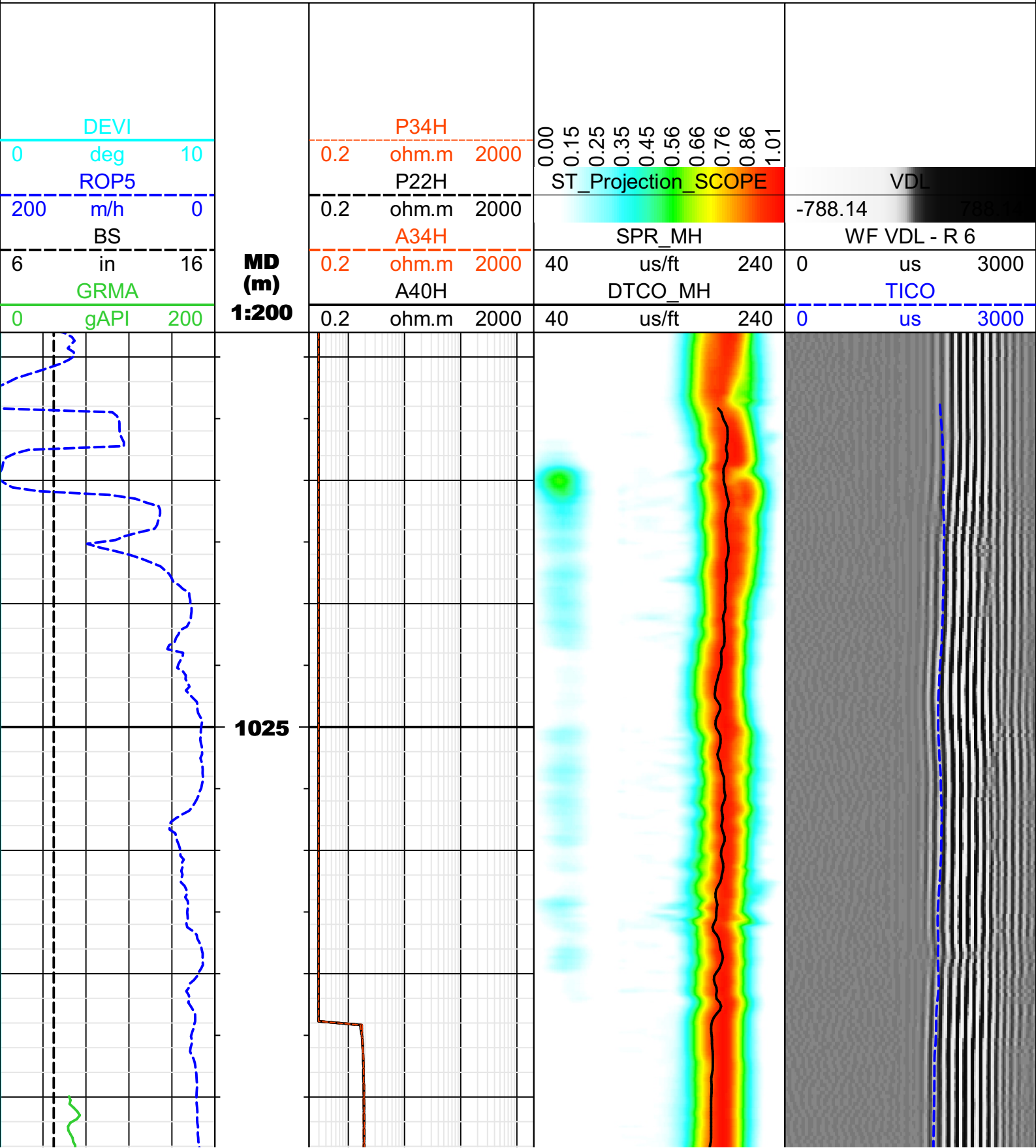
**Bit size:** 8.5 in  
**Energy threshold option:** Collar only  
**Filter band low:** 9000 Hz  
**Average hole size:** 8.5 in  
**Receiver/transmitter/DDBHC mode:** Receiver mode

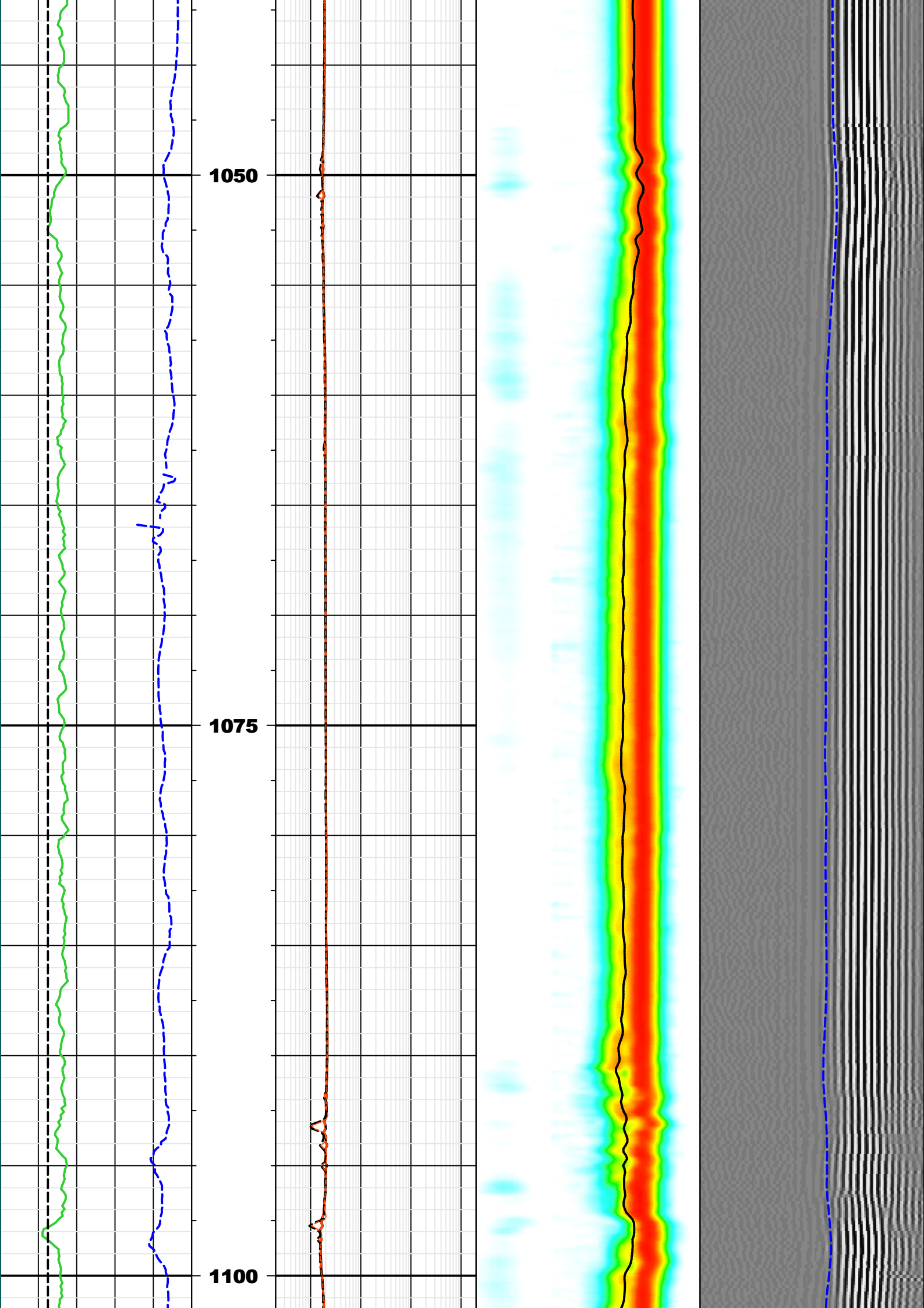
**Caliper:** BS in  
**Filter length:** 41  
**Filter type:** Static filter  
**Leaky-P:** No  
**Mud slowness:** 200 us/ft

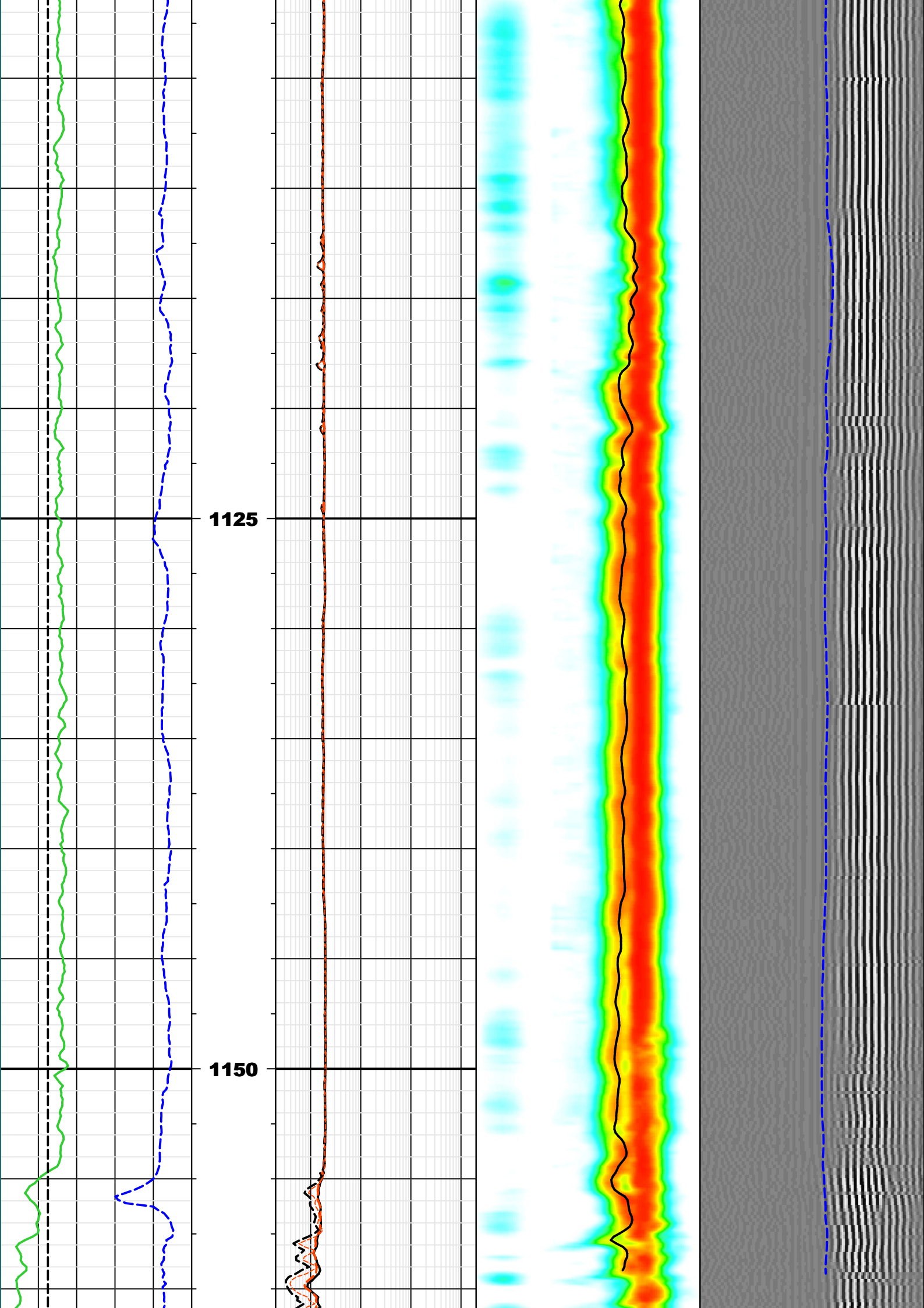
**Mud density:** 8.599999 lbm/gal  
**Search band offset:** 294.583 us  
**Slowness lower limit:** 40 us/ft  
**STC stacking:** Yes  
**Slowness width:** 20 us/ft  
**Min frequency:** 0 Hz  
**Time lower limit:** 400 us  
**Shear lower limit:** 160 us/ft  
**Time upper limit:** 3700 us  
**Waveform:** WFA\_MHT\_MEDRS\_FILT\_51 unitless

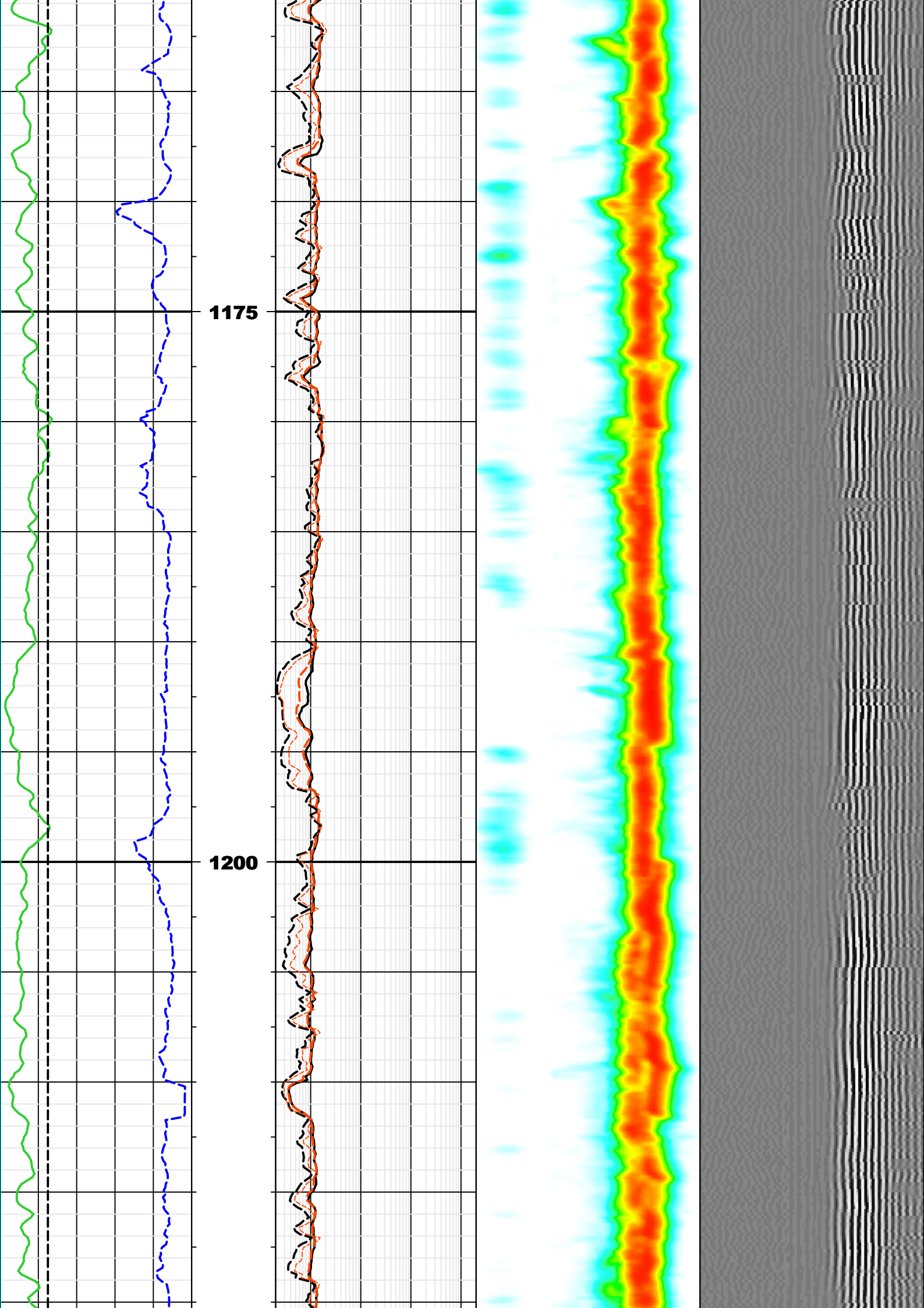
**Mud type:** WBM  
**Search band width:** 2135.83 us  
**Shear only processing:** No  
**Stacked frames:** 3  
**Compute SFA:** Yes  
**Model order:** 2  
**Compressional lower limit:** 90 us/ft  
**Shear upper limit:** 1112 us/ft  
**Time width:** 1600 us  
**Reference receiver:** 6

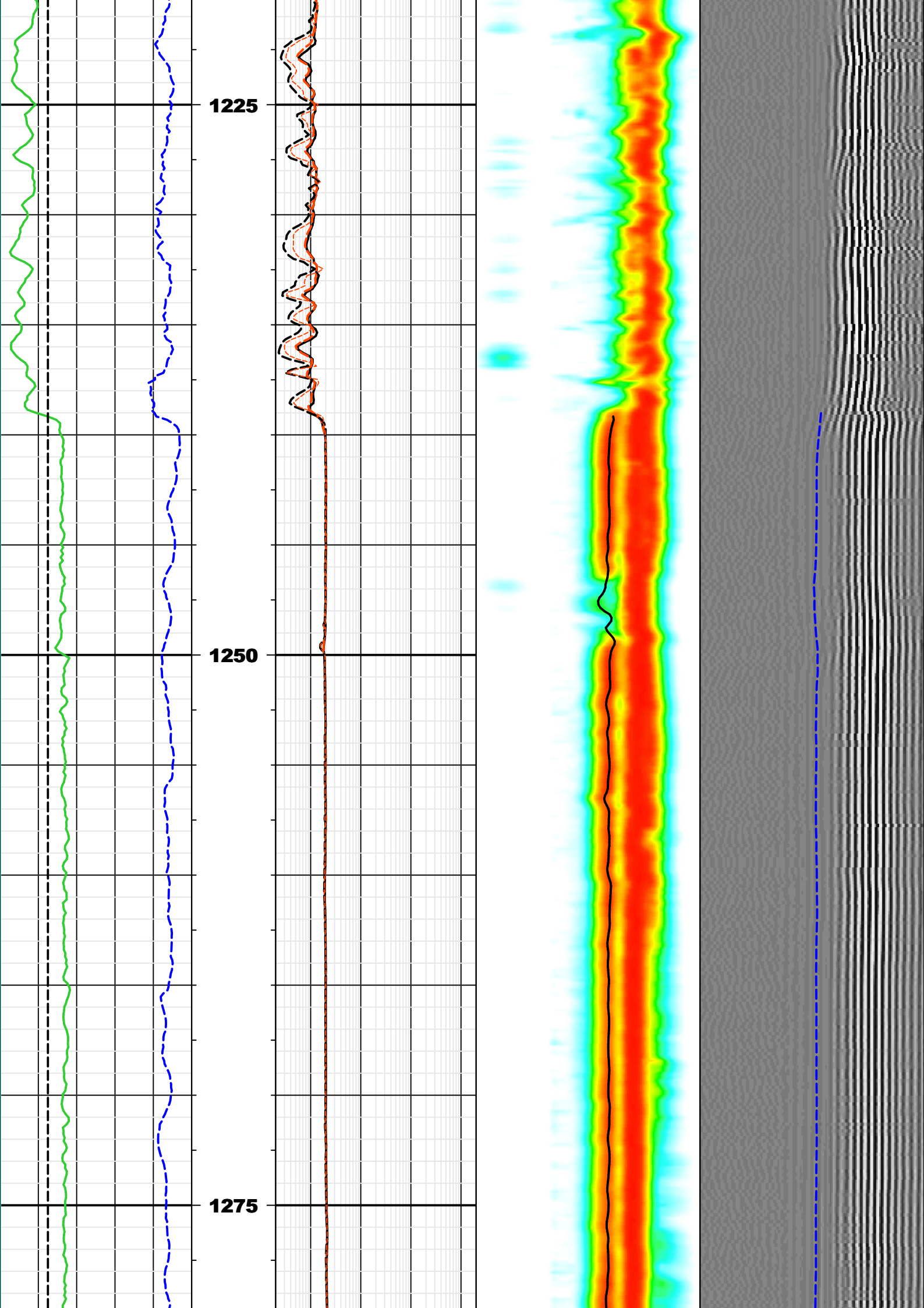
**Multishot NRSA:** 7  
**Semblance threshold:** 0.35  
**Slowness step:** 2 us/ft  
**Slowness upper limit:** 240 us/ft  
**Max frequency:** 12000 Hz  
**Matching tolerance:** 50  
**Compressional upper limit:** 202.5 us/ft  
**Time step:** 100 us  
**Integration time window:** 300 us  
**Receiver selection:** R1;R2;R3;R4;R5;R6;R7;R8;R9;R10;R11;R12

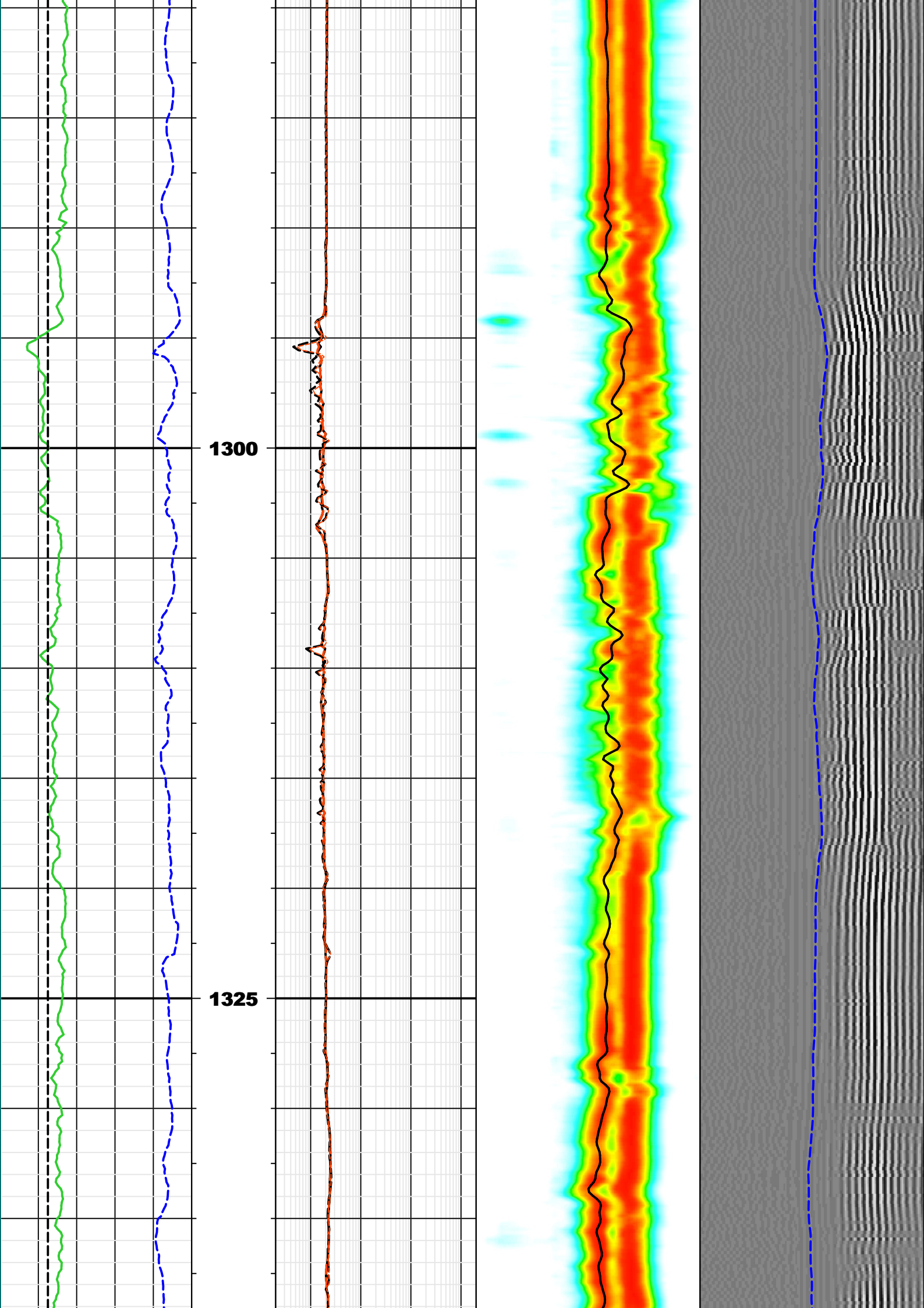


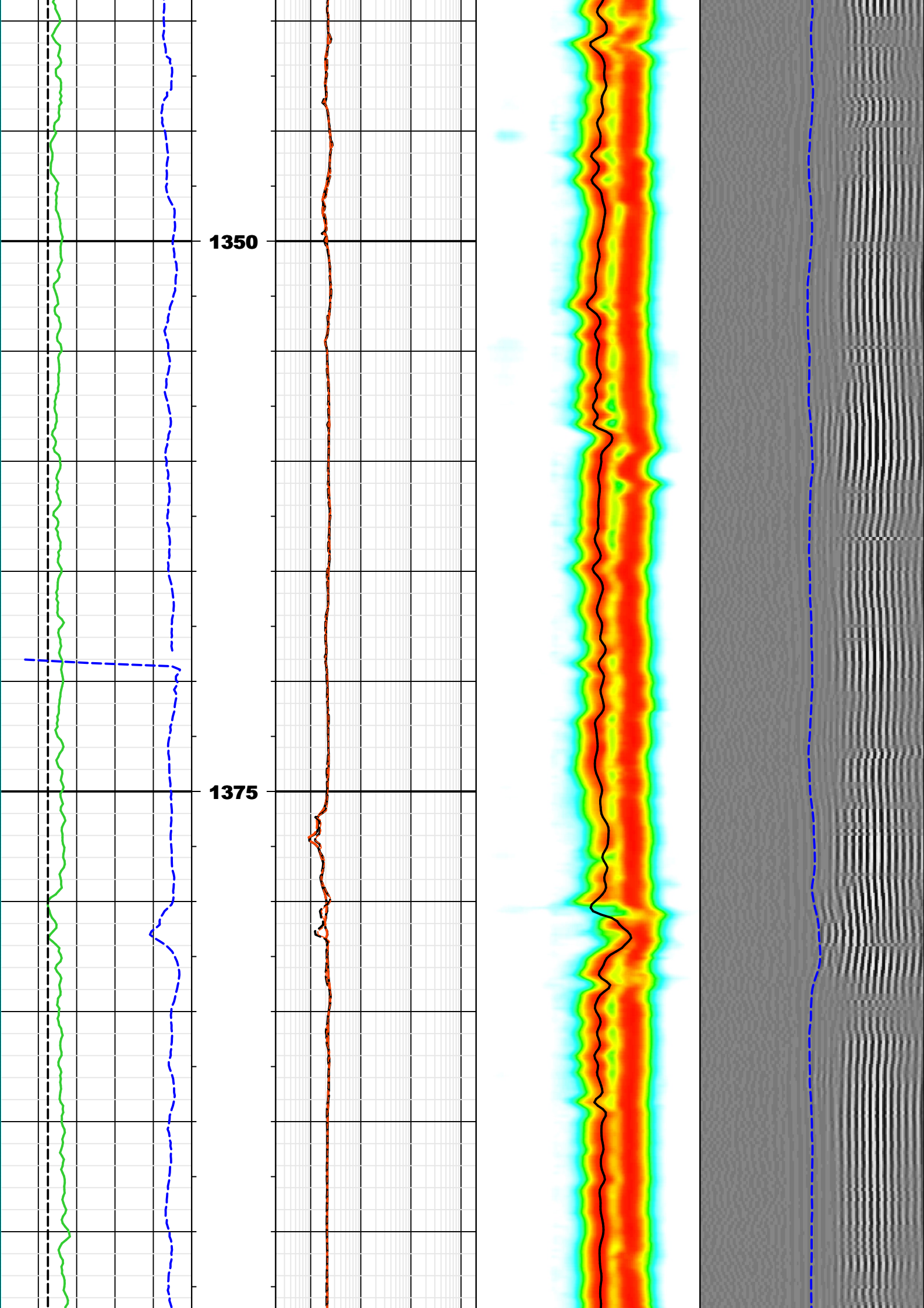




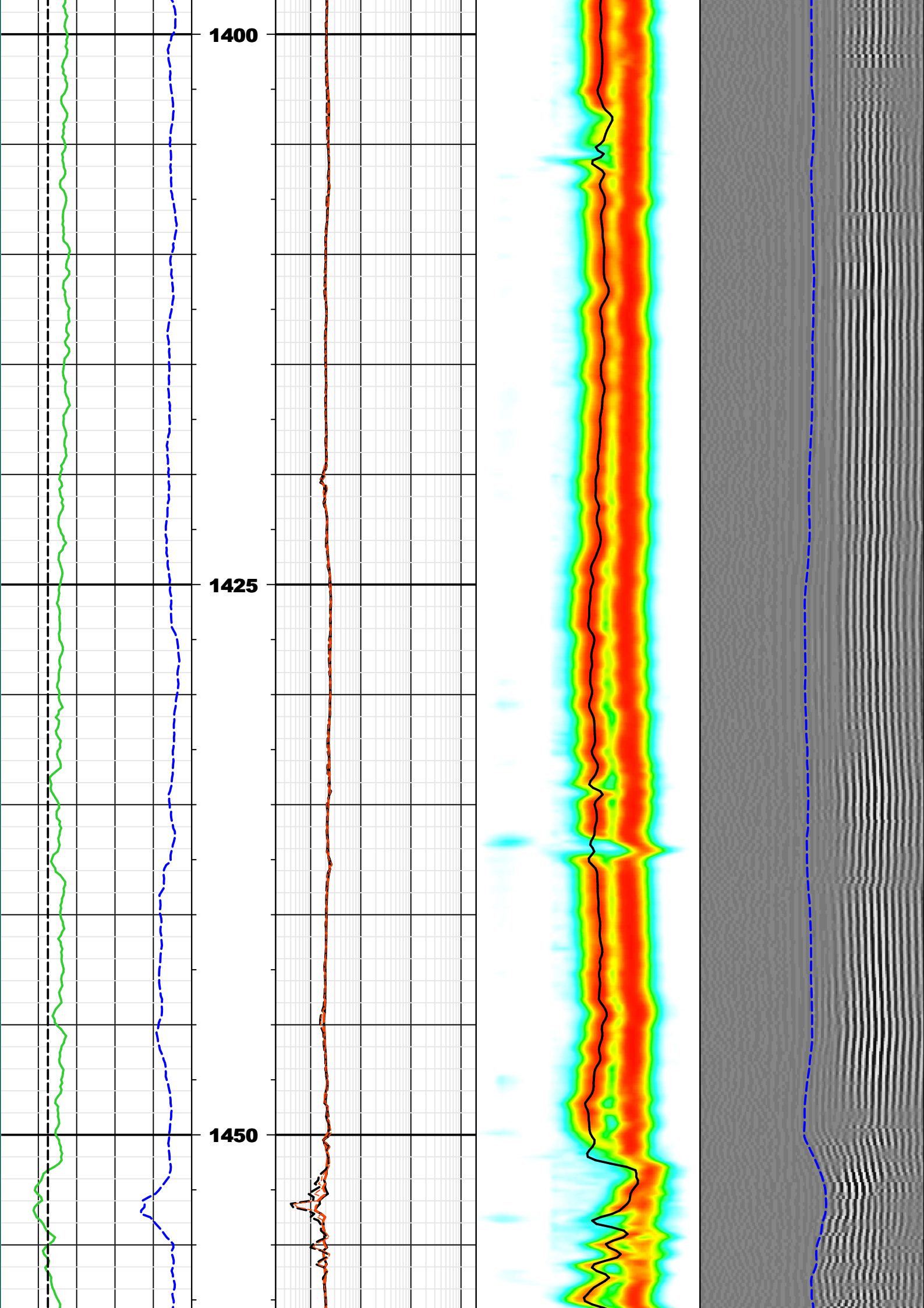


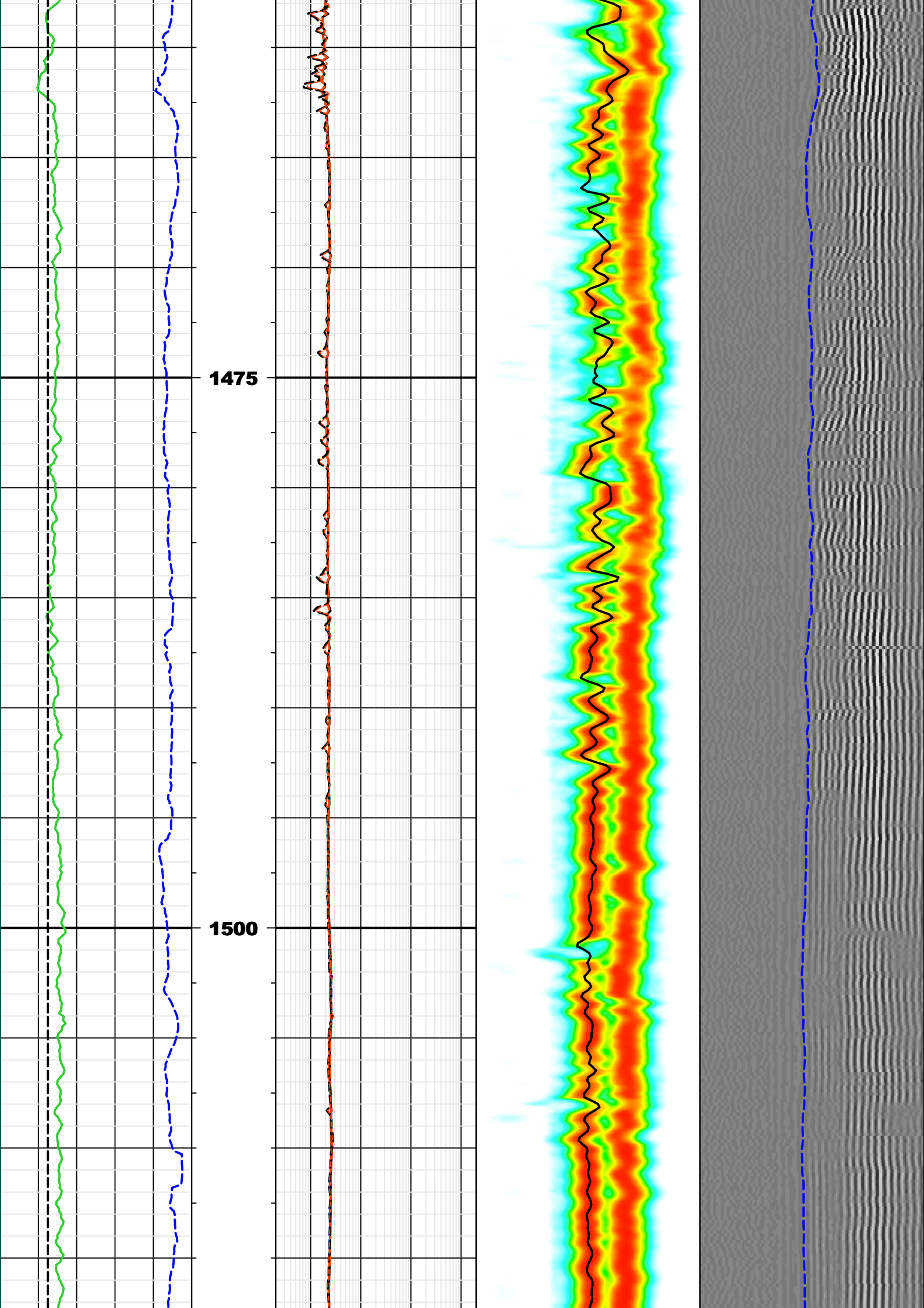


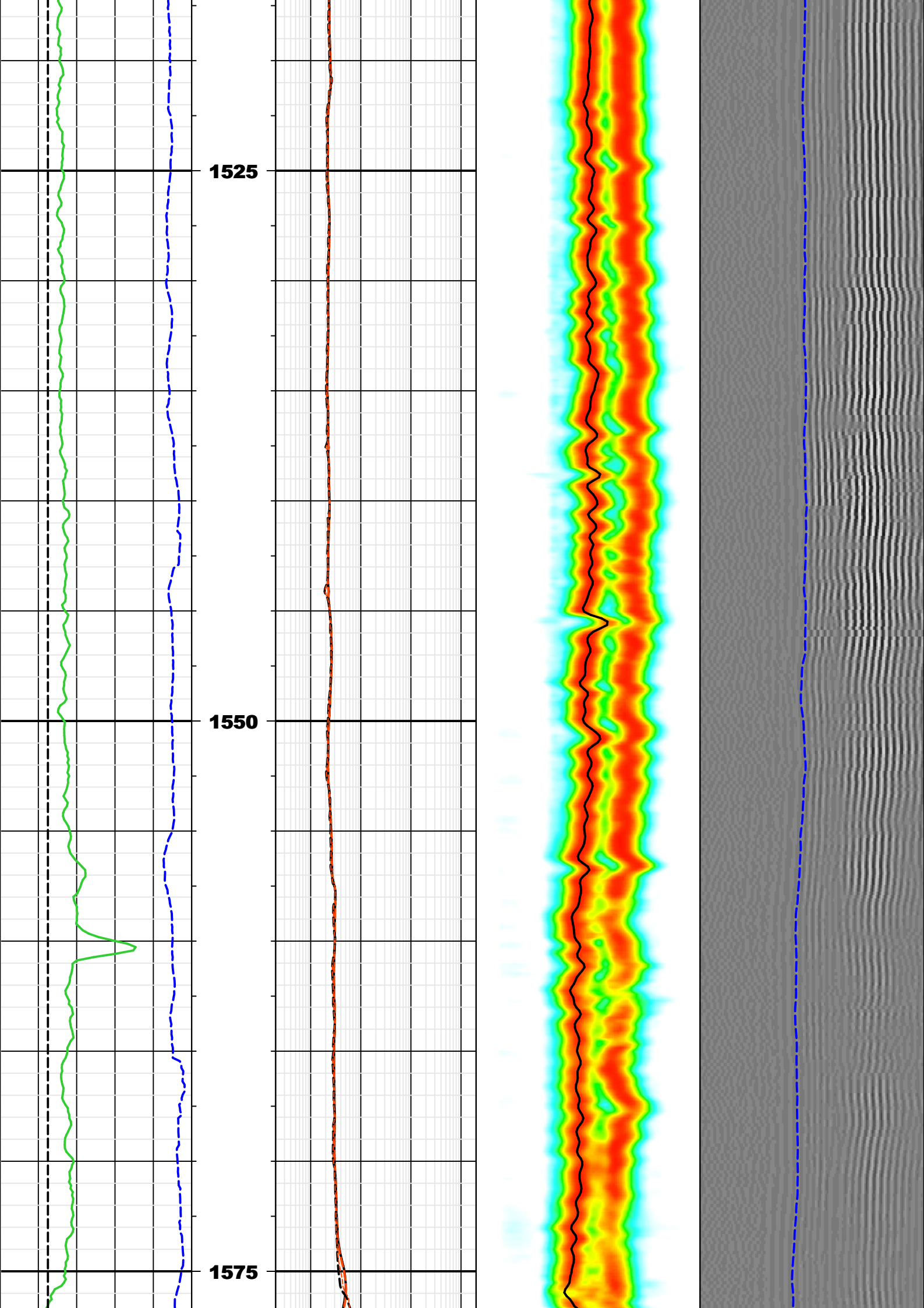


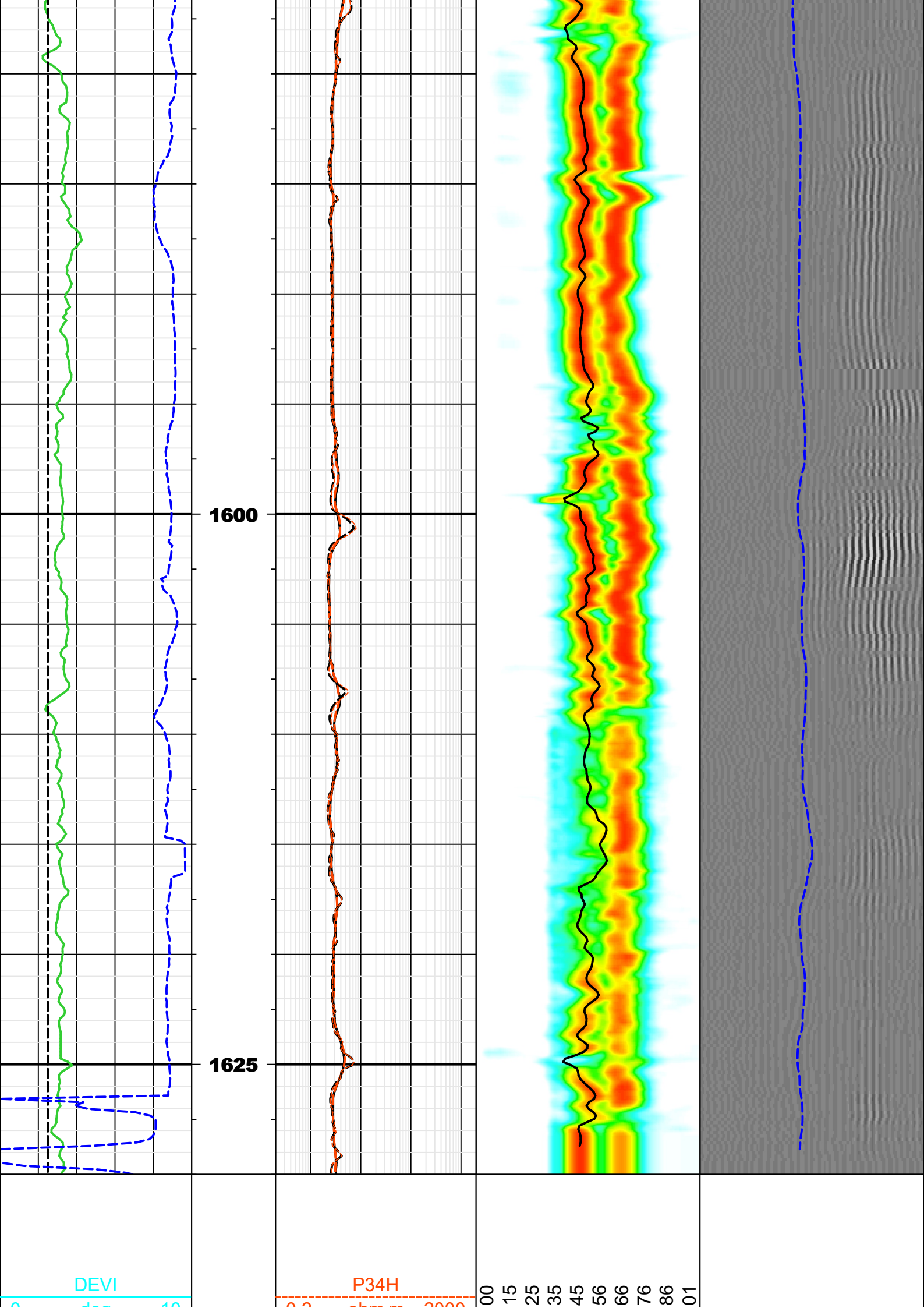












deg	10		0.2	ohm.m	2000	0	0	0	0	0	0	0	0	0	0	0	0	0	0	0	
ROP5				P22H		ST_Projection_SCOPE														VDL	
200	m/h	0	0.2	ohm.m	2000															-788.14	788
	BS			A34H		SPR_MH														WF VDL - R 6	
6	in	16		A40H		40	us/ft	240	0	us	3000	TICO									
0	gAPI	200		A40H		40	us/ft	240	0	us	3000										

**MD**  
**(m)**  
**1:200**

Company: IODP  
Well: HSM-01A  
Field: Joides Resolution  
Country: New Zealand



Date Logged: 25-Dec-2017      Date Processed: 30-Dec-2017  
Well Location: Longitude: 178° 36' 51.24" E    Latitude: 38° 43' 38.22" S

Elevations:      DF: 36.09m                      GL: -3287.4m