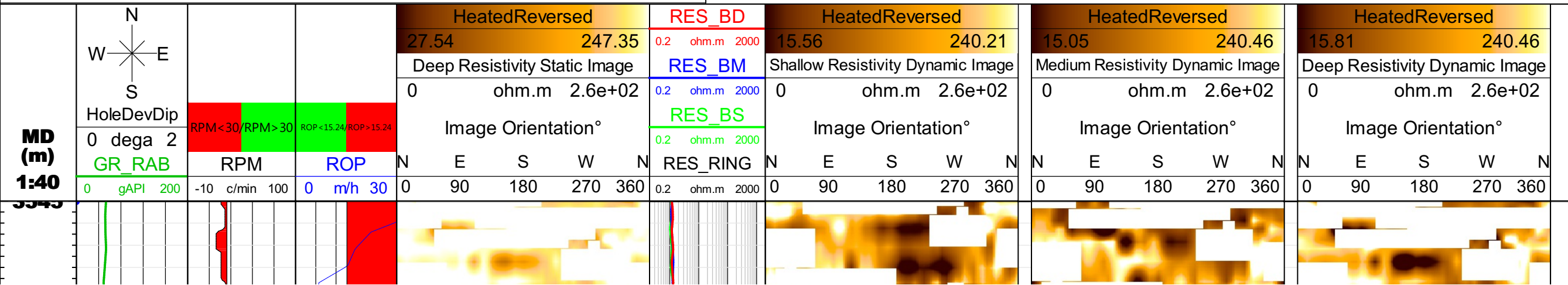


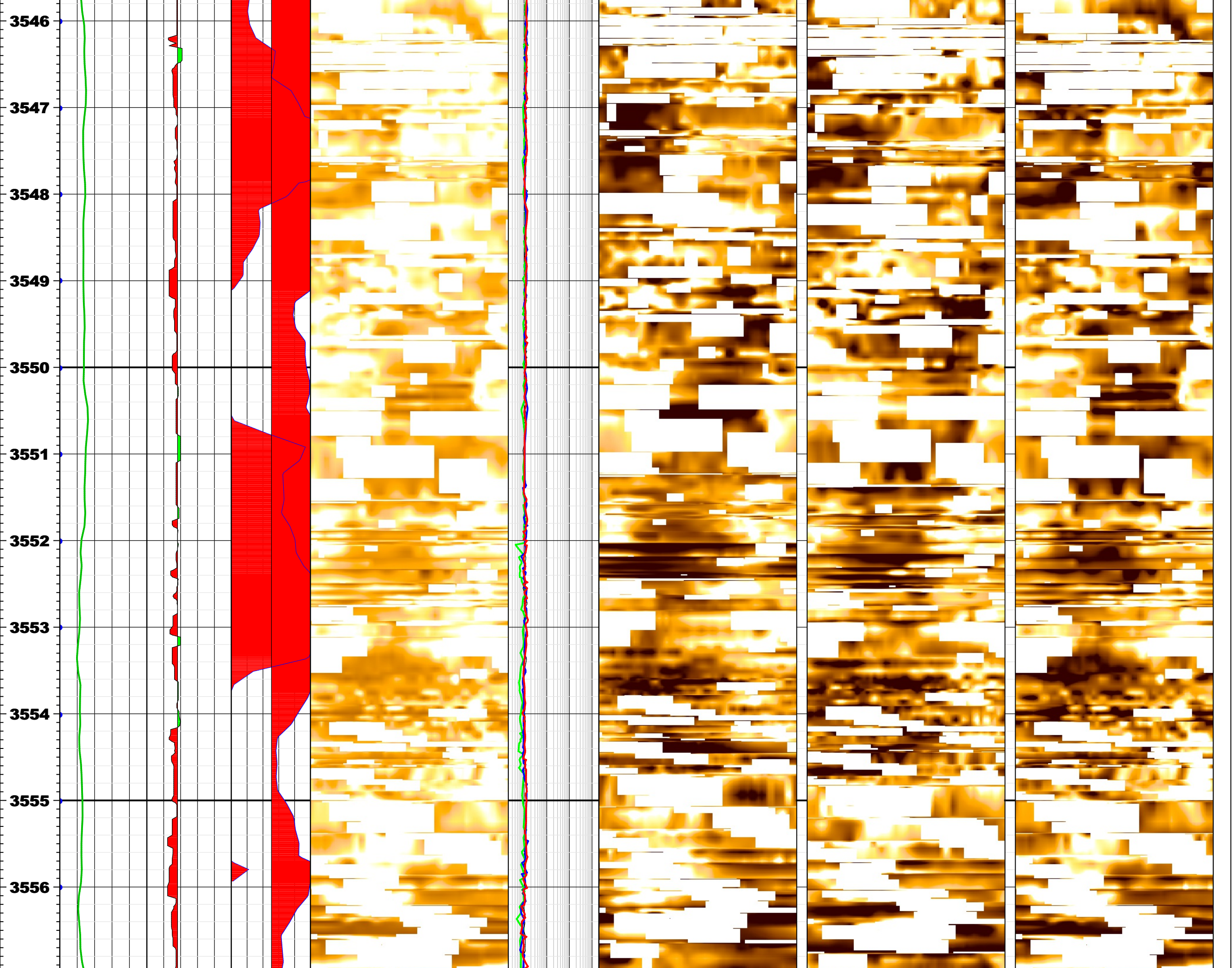
RAB6 (GVR6) Resistivity Processed Images

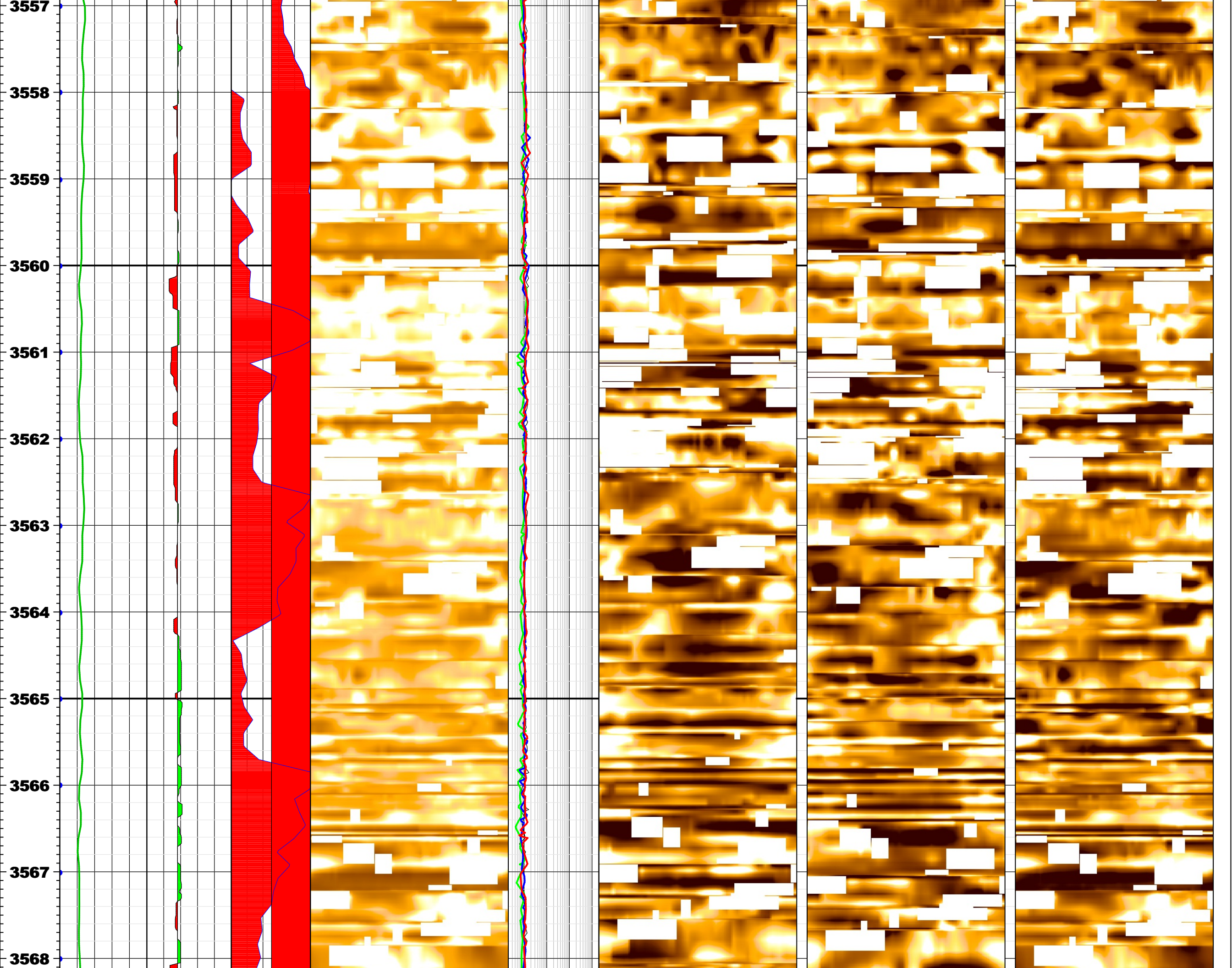
Processed Static & Dynamic Images (Shallow, Medium & Deep) Interval: 3545-3635 m MD, Scale: 1:40

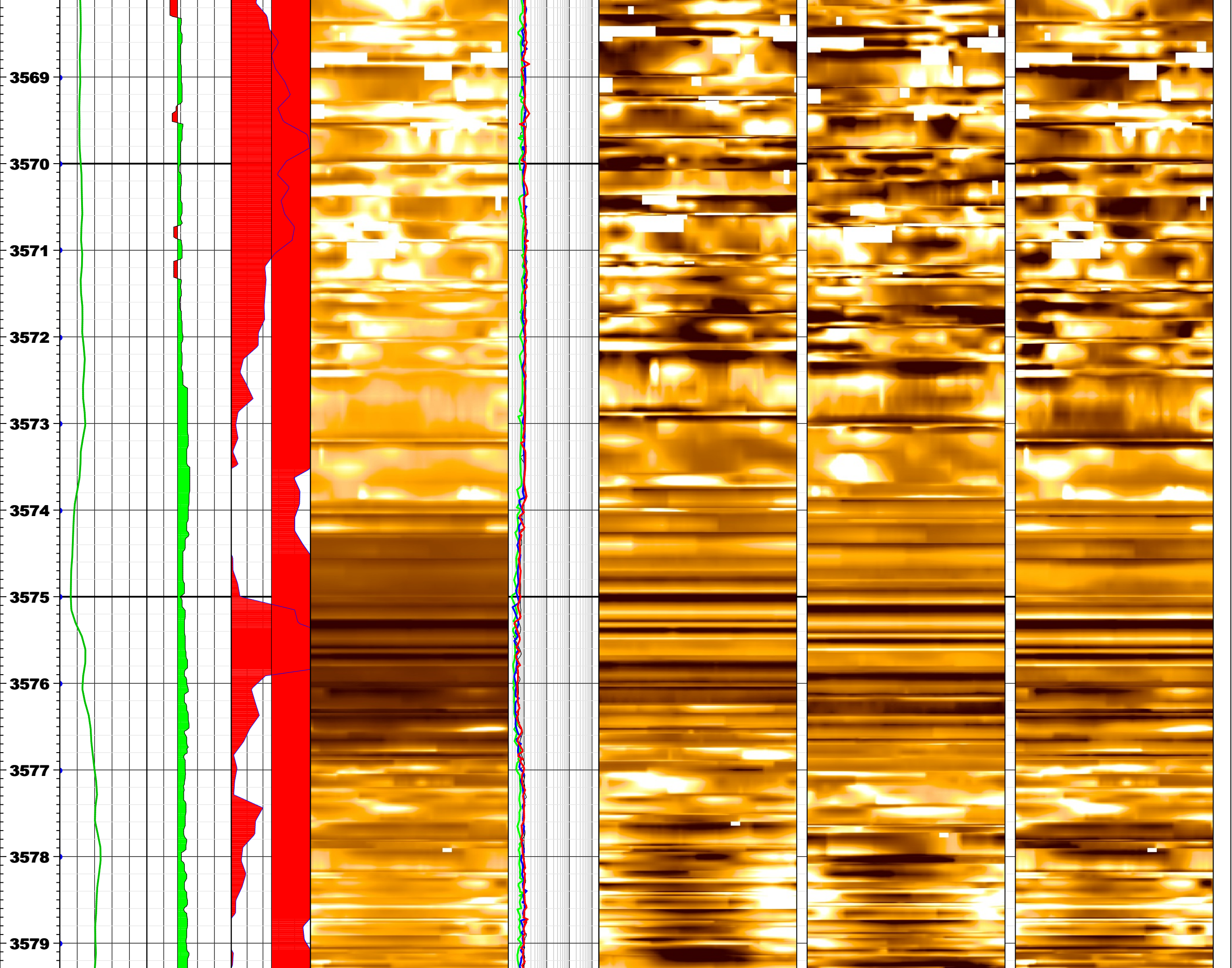
COMPANY: IODP WELL: U1520A FIELD: HSM-05A COUNTRY: New Zealand Date Logged: 27-Dec-2017 Date Processed: 02-Jan-2018 Run no.: 1 Depth Driller (m): 3636.2 m Depth Logger (m): 3636.2 m Elevations (m): K.B: 0.0 m D.F: 11 m G.L: -3527.3 m Permanent Datum: MSL Log Measured From: DF 11.00 m above Permanent Datum	Using the following logs: RAB6-CB, DVM-675, TST675, MWD_10, MP6-B, MRT6-BA
Field Recording:	
Location:	Software version: Maxwell 7.3.92069 Engineer:
Office Recording:	
Location: DS HUB	Software version: Techlog 2015.3 Geologist: Nancy Buragohain
Mud and Borehole Measurements:	
Rm @ Measured Temperature: 0.2 ohm.m @ 23.889 degC	BHT: 2 deg C Bitsize: 8.5 inch
Rmf @ Measured Temperature: 0.15 ohm.m @ 20 degC	Fluid in Hole: Sea Water Mud Density: 8.6 lbm/gal
Rmc @ Measured Temperature: -999.25 ohm.m @ 20 degC	Mud pH: -999.25 Fluid Loss: -999.25 cc

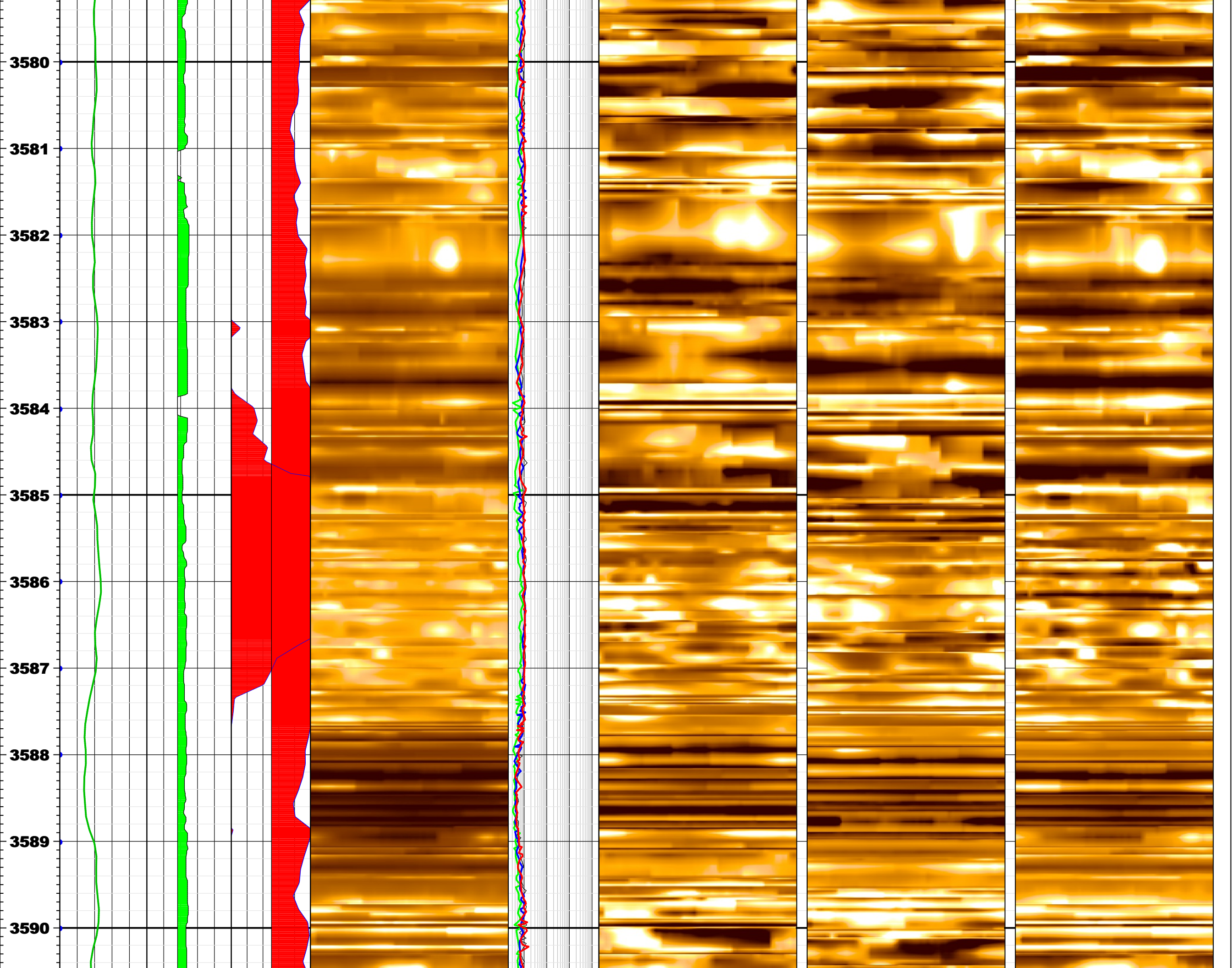
Remarks: Any interpretation, research, analysis, data, results, estimates, or recommendation furnished with the services or otherwise communicated by Schlumberger to the customer at any time in connection with the services are opinions based on inferences from measurements, empirical relationships, and/or assumptions; which, inferences, empirical relationships and/or assumptions are not infallible and with respect to which professionals in the industry may differ. Accordingly, Schlumberger cannot and does not warrant the accuracy, correctness, or completeness of any such interpretation, research, analysis, data, results, estimates, or recommendation. The customer acknowledges that it is accepting the services "as is," that Schlumberger makes no representation or warranty, express or implied, of any kind or description in respect thereto, and that such services are delivered with the explicit understanding and agreement that any action taken based on the services received shall be at its own risk and responsibility, and no claim shall be made against Schlumberger as a consequence thereof.

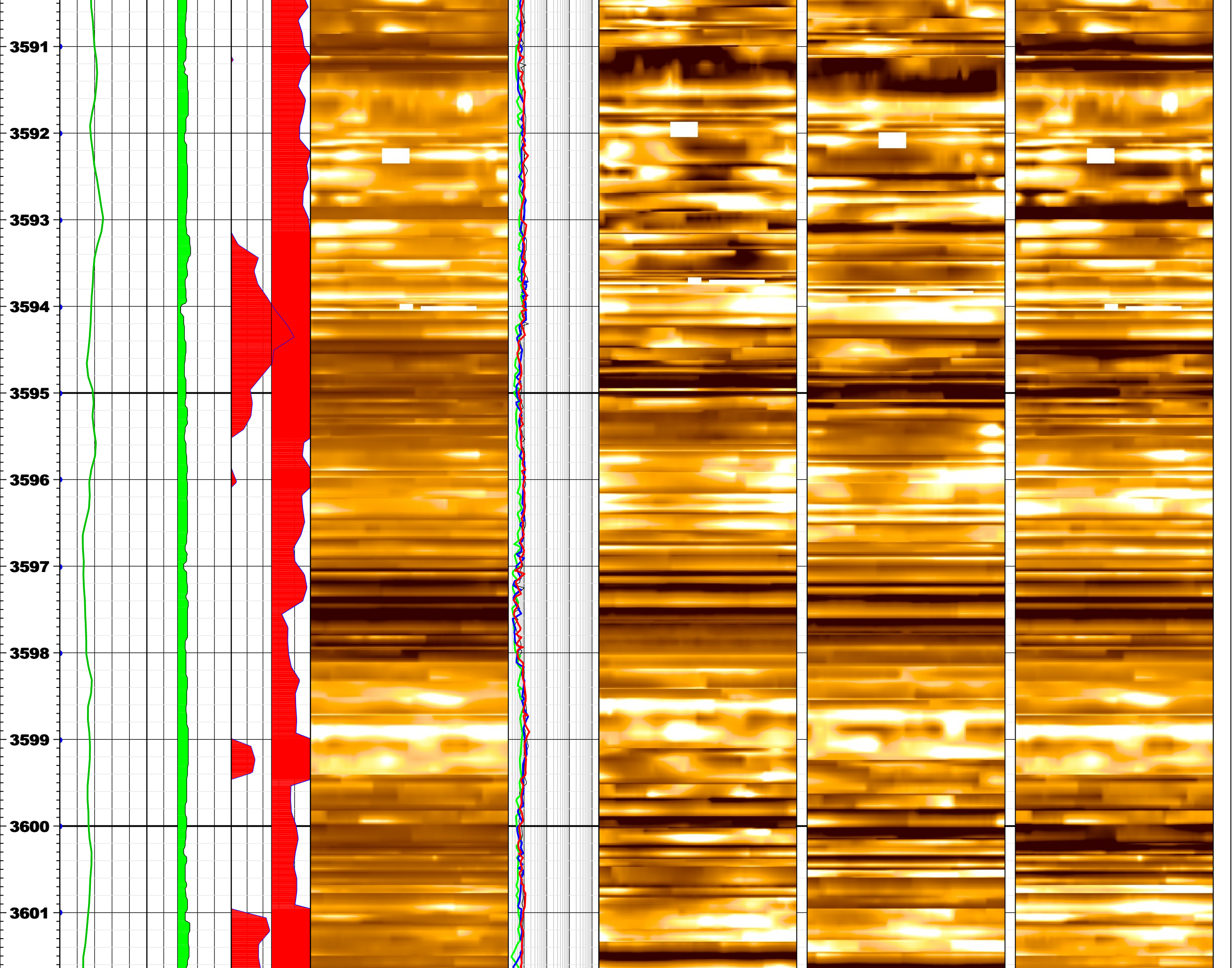


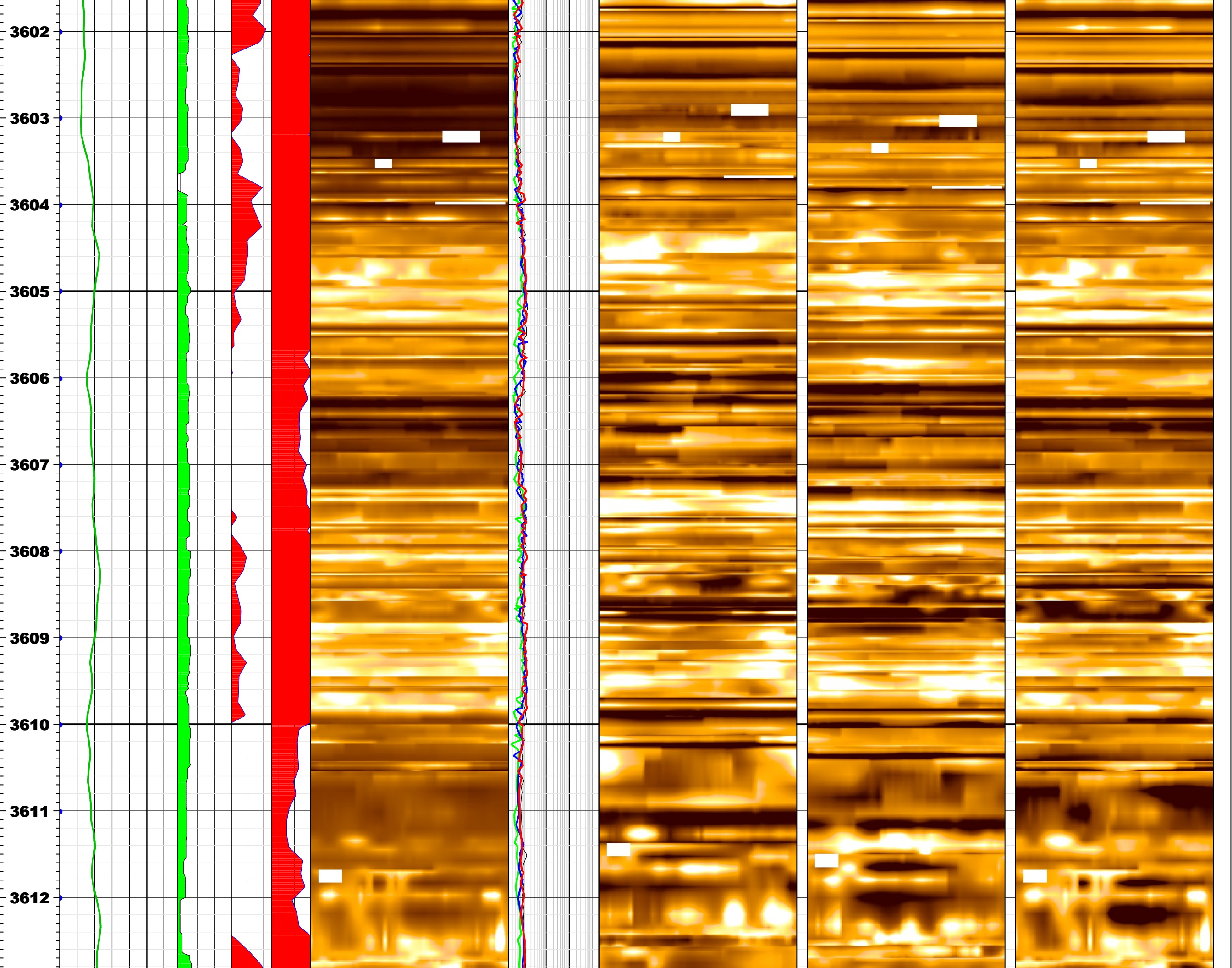


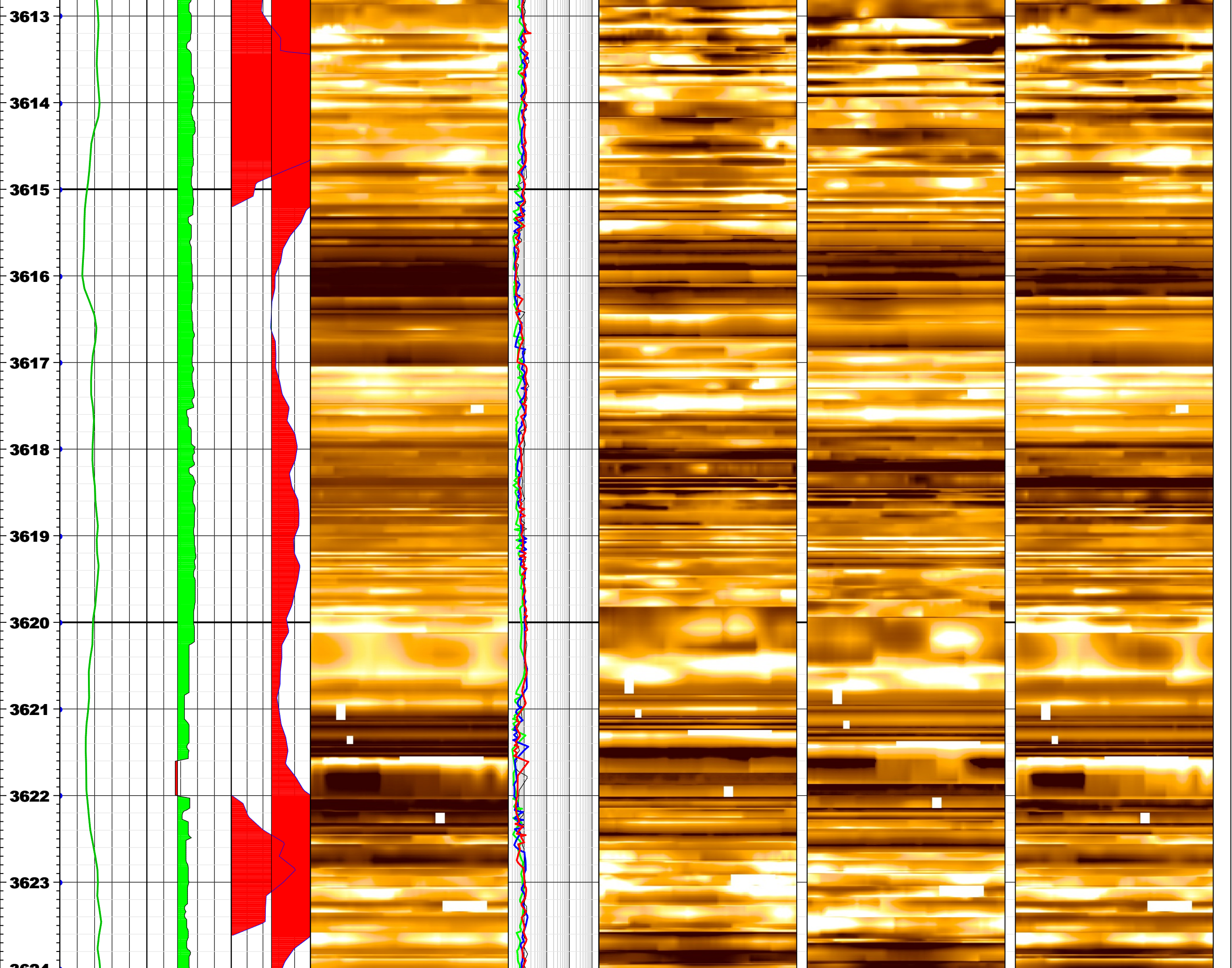


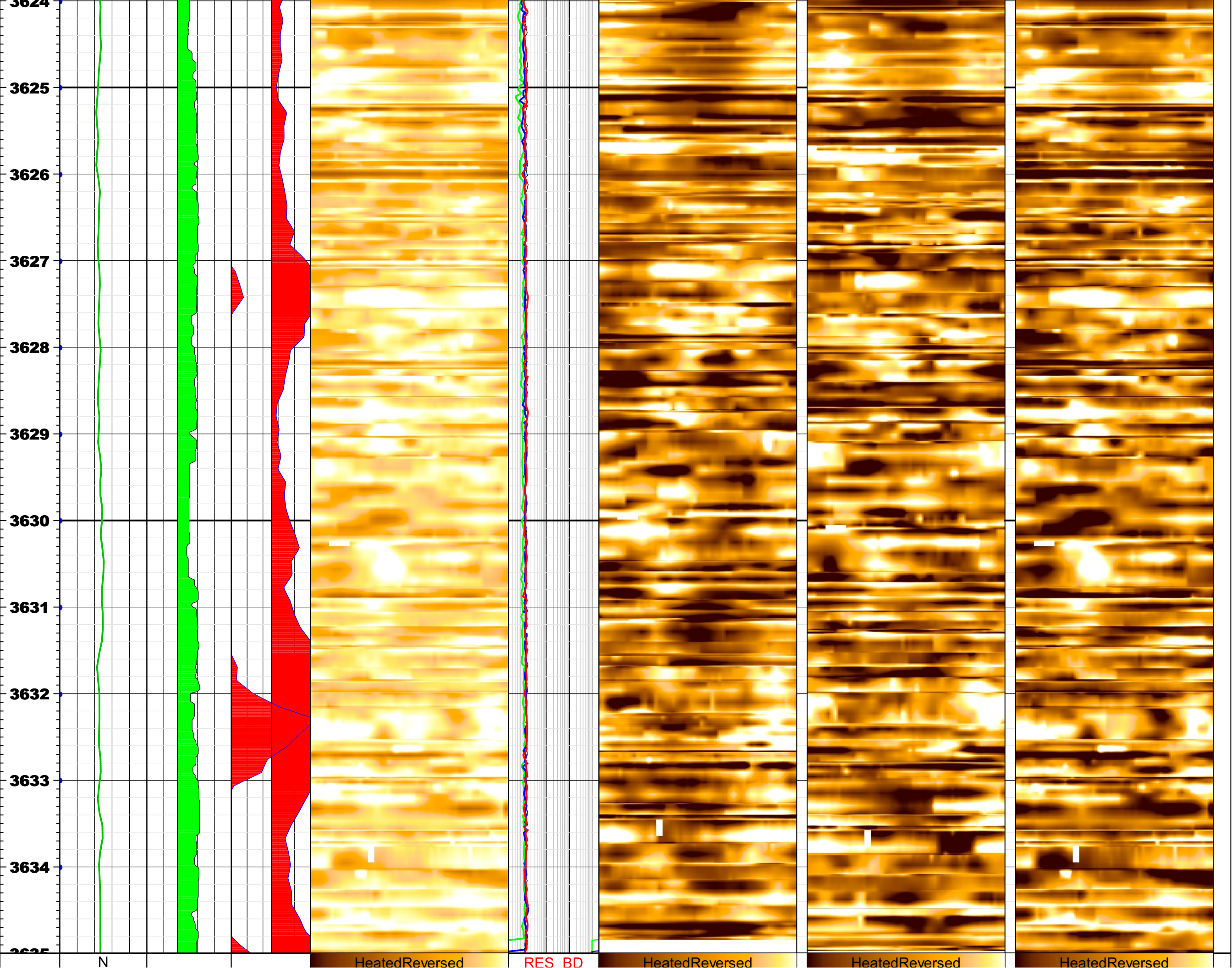




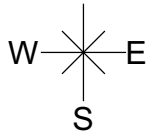








**MD
(m)
1:40**



HoleDevDip

0 dega 2

GR_RAB

0 gAPI 200

RPM < 30 / RPM > 30

RPM

-10 c/min 100

ROP < 15.24 / ROP > 15.24

ROP

0 m/h 30

27.54 247.35

Deep Resistivity Static Image

0 ohm.m 2.6e+02

Image Orientation°

N E S W N

0 90 180 270 360

0.2 ohm.m 2000

RES_BM

0.2 ohm.m 2000

RES_BS

0.2 ohm.m 2000

RES_RING

0.2 ohm.m 2000

15.56 240.21

Shallow Resistivity Dynamic Image

0 ohm.m 2.6e+02

Image Orientation°

N E S W N

0 90 180 270 360

15.05 240.46

Medium Resistivity Dynamic Image

0 ohm.m 2.6e+02

Image Orientation°

N E S W N

0 90 180 270 360

15.81 240.46

Deep Resistivity Dynamic Image

0 ohm.m 2.6e+02

Image Orientation°

N E S W N

0 90 180 270 360