

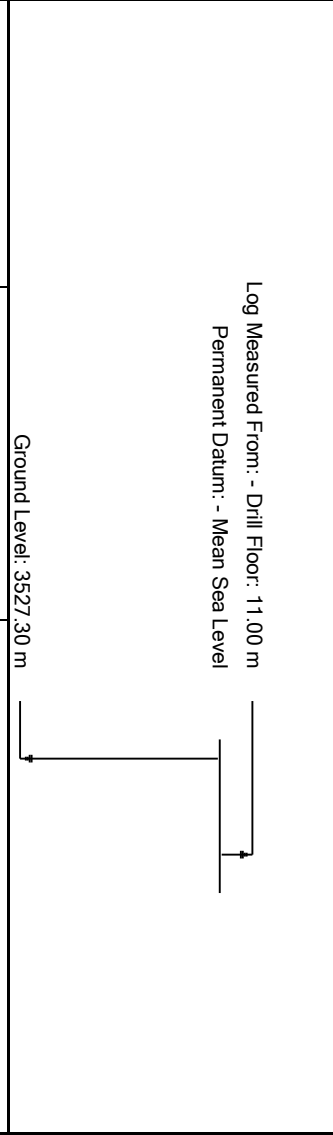
**geoVISION Resistivity**  
**1:240 Measured Depth**  
**Recorded Mode Data**



**Company:** IODP  
**Well:** U1520B  
**Field:** HSM-05A  
**Rig Name:** Joides Resolution  
**Expedition:** 372  
**Country:** New Zealand

**Latitude:** 38° 58' 9.84" S **UWID:**  
**Longitude:** 178° 7' 56.1" E **Rig Name:** Joides Resolution  
**Block:** EXP372 **Rig Type:** Drill Ship

**FL1:**  
**FL2:**



<b>Acquisition Dates:</b>	27-Dec-2017 -- 30-Dec-2017	<b>Other Services:</b>	
<b>Log Interval:</b>	3530.00(m) -- 4288.00(m)	<b>SonicScope</b>	
<b>Index Types:</b>	Measured Depth	<b>proVISION Plus</b>	
<b>Index Scales:</b>	1:240	<b>geoVISION Images</b>	
<b>Depth Source:</b>	Driller's Depth	<b>StethoScope</b>	
<b>Depth Sensor:</b>	DES		
<b>Print Type:</b>	Final		
<b>Spud Date:</b>	29-Dec-2017		

**Disclaimer**

THE USE OF AND RELIANCE UPON THIS RECORDED-DATA BY THE HEREIN NAMED COMPANY (AND ANY OF ITS AFFILIATES, PARTNERS, REPRESENTATIVES, AGENTS, CONSULTANTS AND EMPLOYEES) IS SUBJECT TO THE TERMS AND CONDITIONS AGREED UPON BETWEEN SCHLUMBERGER AND THE COMPANY, INCLUDING: (a) RESTRICTIONS ON USE OF THE RECORDED-DATA; (b) DISCLAIMERS AND WAIVERS OF WARRANTIES AND REPRESENTATIONS REGARDING COMPANY'S USE AND RELIANCE UPON THE RECORDED-DATA; AND (c) CUSTOMER'S FULL AND SOLE RESPONSIBILITY FOR ANY INFERENCE DRAWN OR DECISION MADE IN CONNECTION WITH THE USE OF THIS RECORDED-DATA.

**Run 1**

**FINAL GVR LOG 1**

**Software Version**

<b>Acquisition System</b>		<b>Version</b>	
Maxwell 2017 SP3		7.3.92069.3100	
<b>Computation</b>	<b>Description</b>	<b>Version</b>	
RAB6Res	RAB6 Resistivity Computation Package for both Real-time and Recorded Mode	7.3.92069.3100	
RAB6GR	RAB6 Gamma Ray Computation Package for both Real-time and Recorded Mode	7.3.92069.3100	
<b>SoftwareVersion_Tool</b>	<b>SoftwareVersion_System Version</b>	<b>SoftwareVersion_Loaded Version</b>	
HSPM	20.3c.062	7.3.92069.3100	
<b>Tool Elements</b>	<b>Description</b>	<b>Software Version</b>	<b>Firmware Version</b>
DRILLING_SURFACE	DRILLING_SURFACE	7.3.92069.3100	
RBEC	Electronics Chassis Assembly for RAB6-C	7.3.92069.3100	V8.6B

**Pass Summary**

Run Name	Pass Objective	Direction	Top	Bottom	Start	Stop	Include Parallel Data
Run 1	Drilling	Down	3499.71 m	4288.41 m	27-Dec-2017 3:17:55 AM	30-Dec-2017 5:41:59 PM	Yes

All depths are referenced to toolstring zero

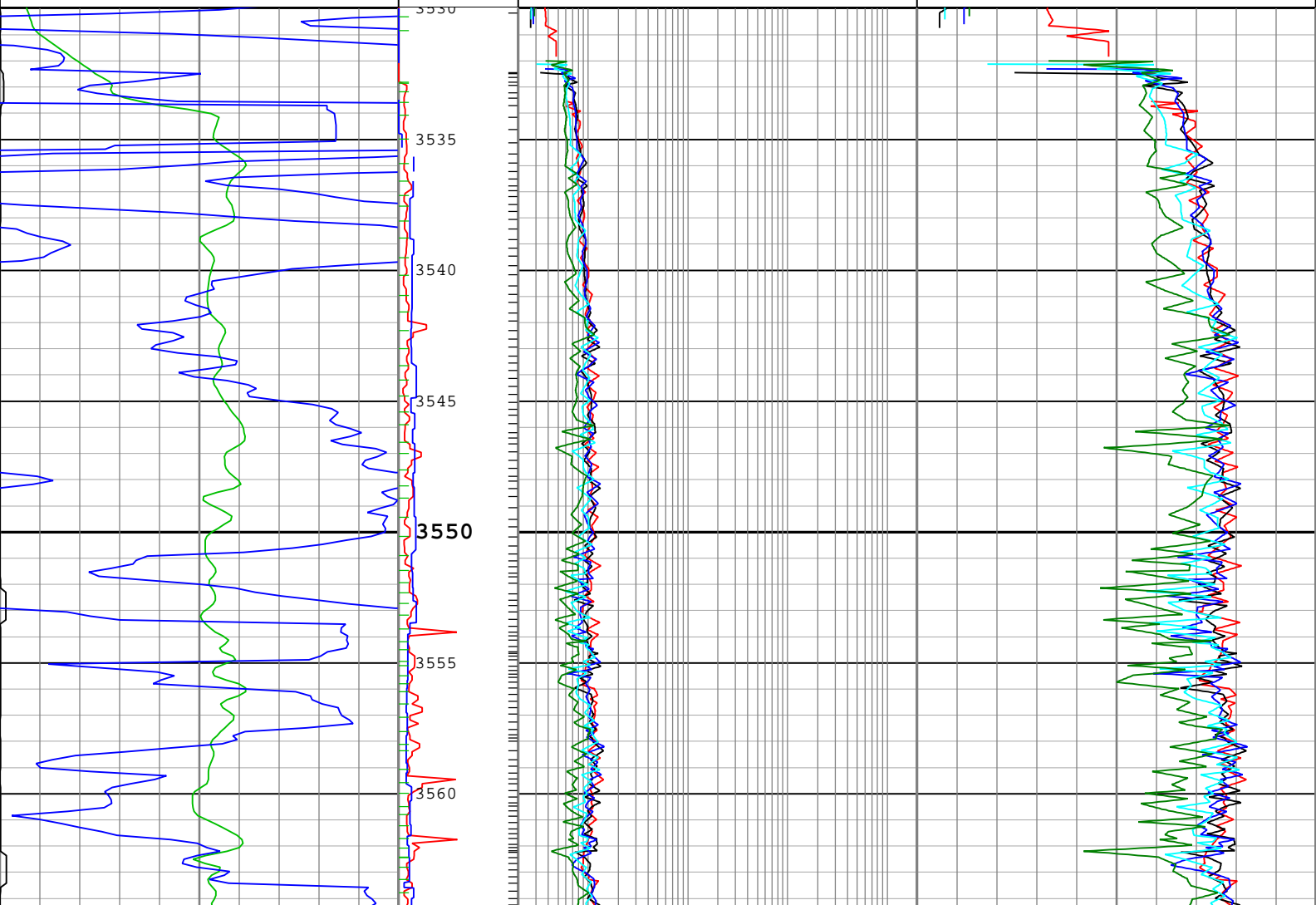
<b>Log</b>	Company: IODP	Well: U1520B
	Run 1: Drilling: S011	

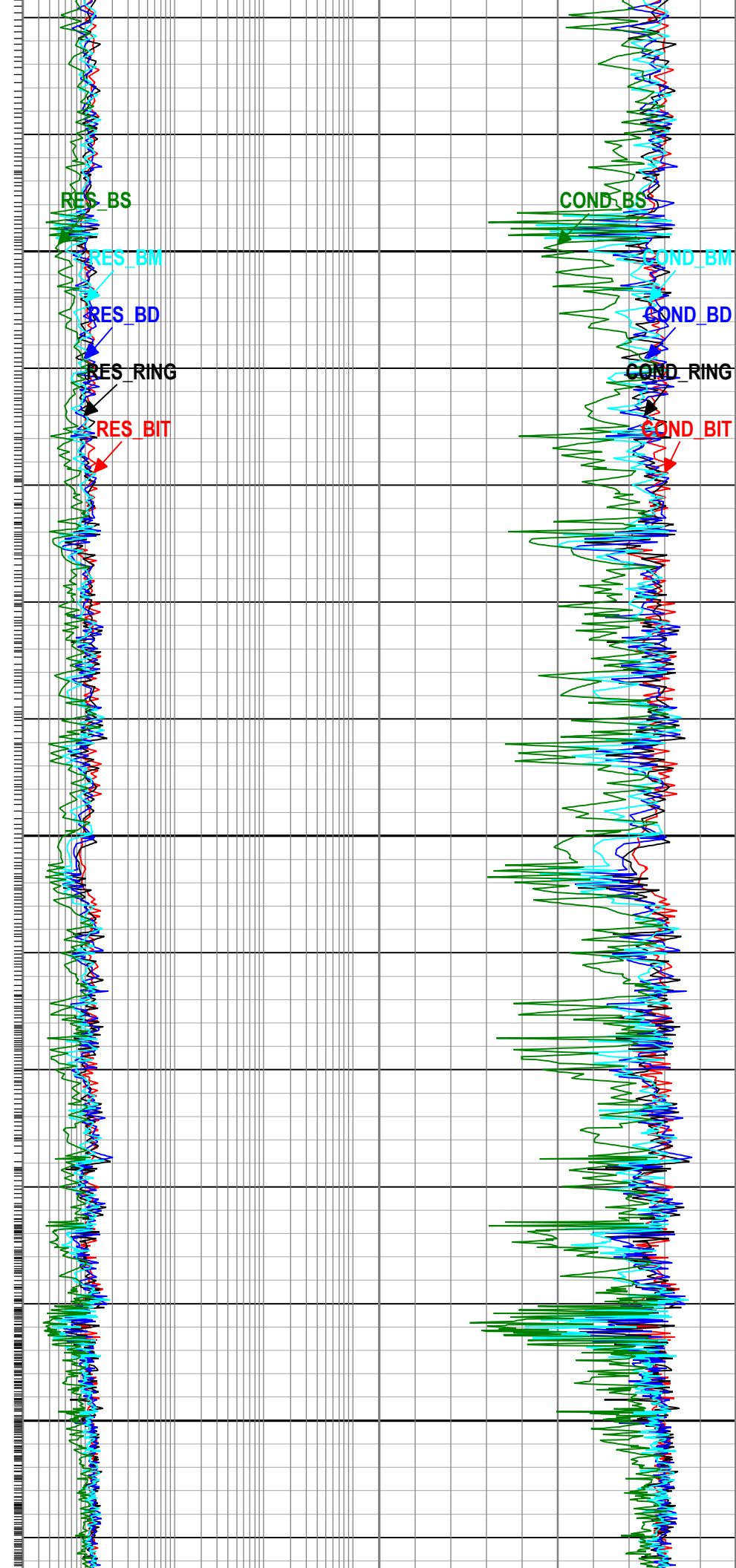
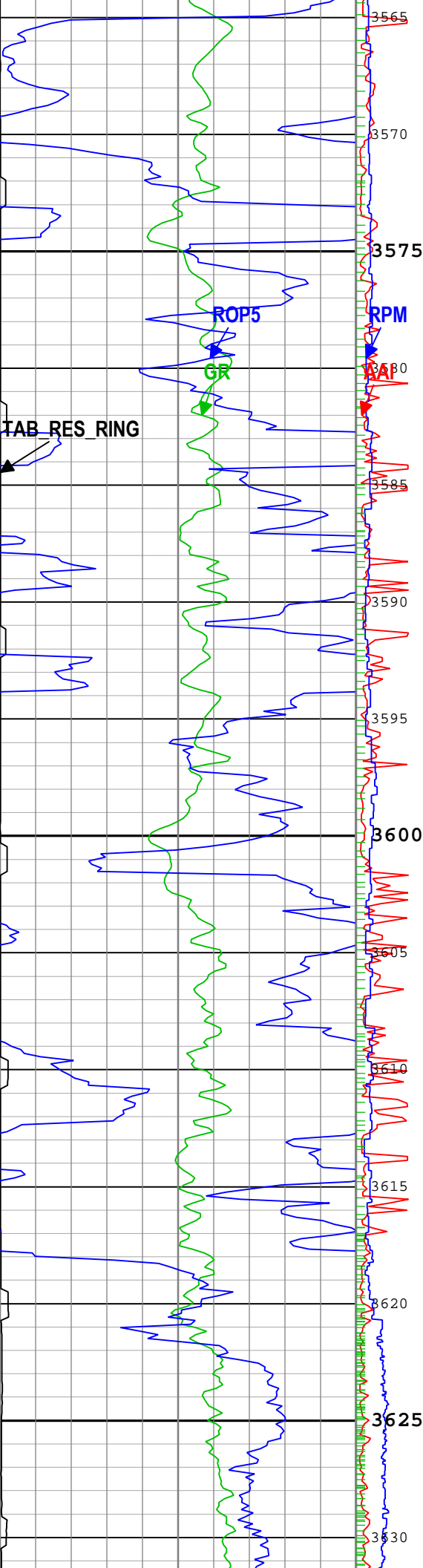
Description: GVR Resistivity Conductivity Format: Log ( FINAL GVR LOG 1 ) Index Scale: 1:240 Index Unit: m Index Type: Measured Depth Creation Date: 31-Dec-2017 19:30:05

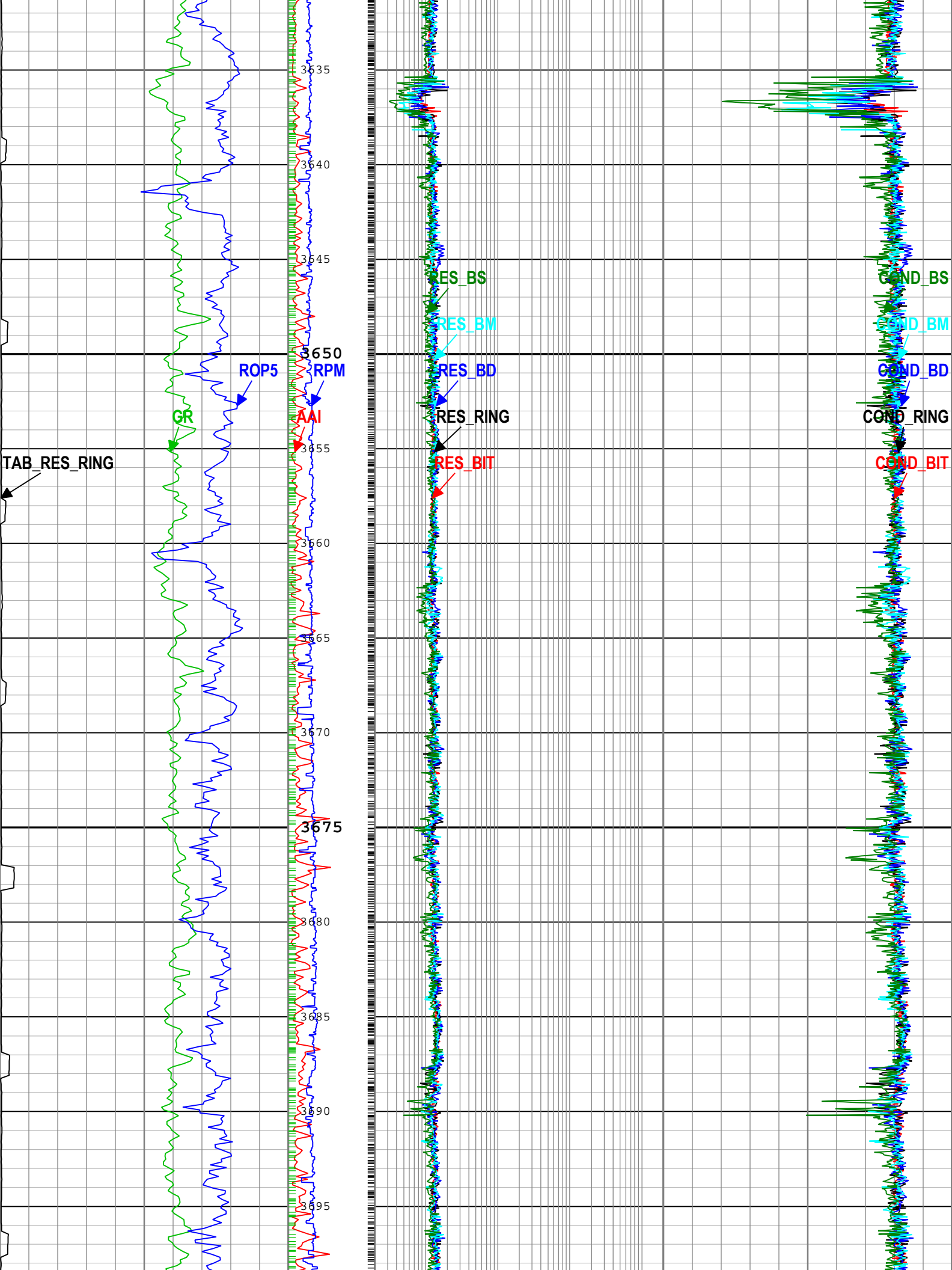
┆ TICKS\_GR - Gamma Ray Tick Marks RAB6 RM

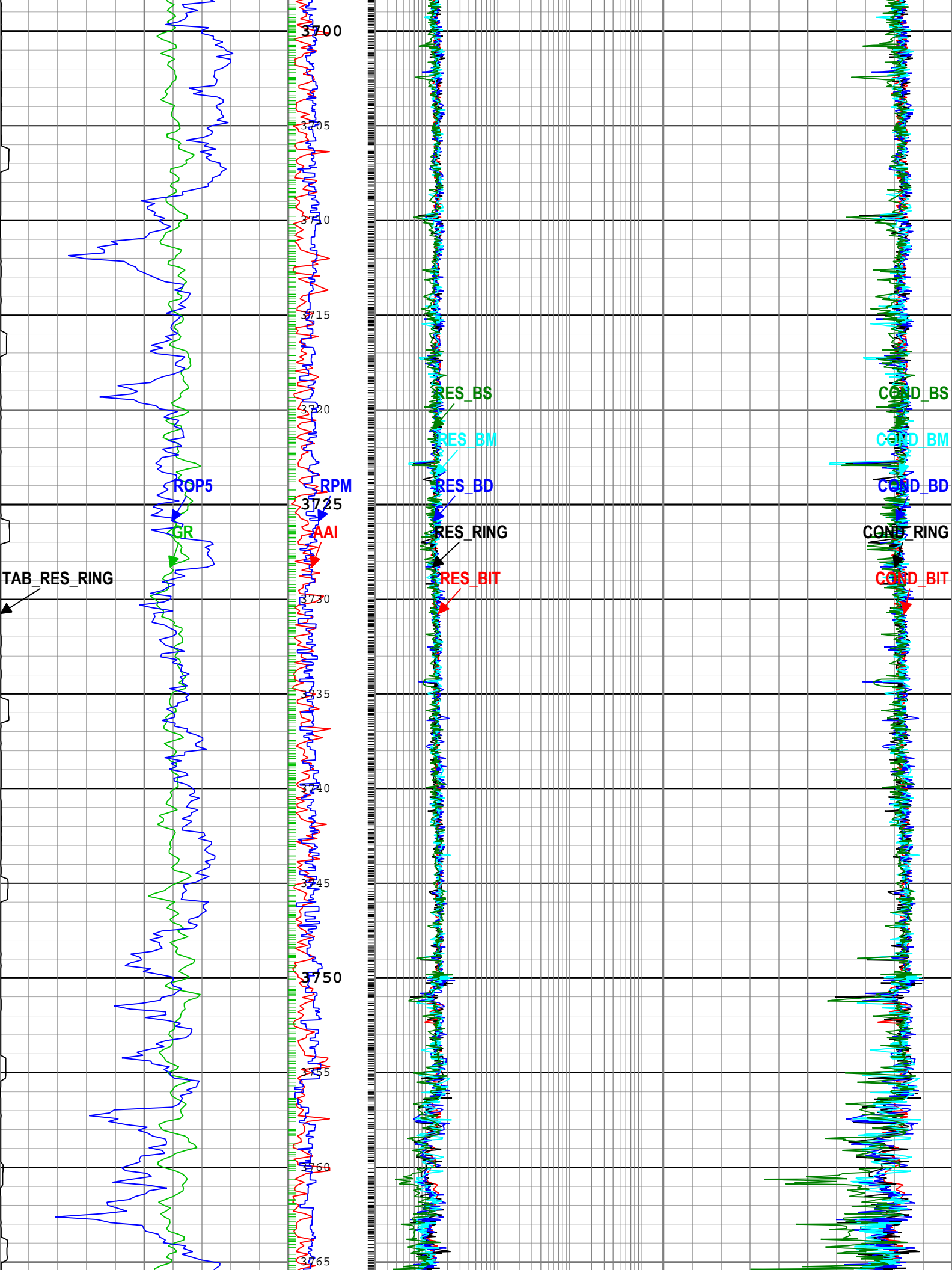
┆ TICKS\_RING - Ring Sample Tick Marks RAB6 RM

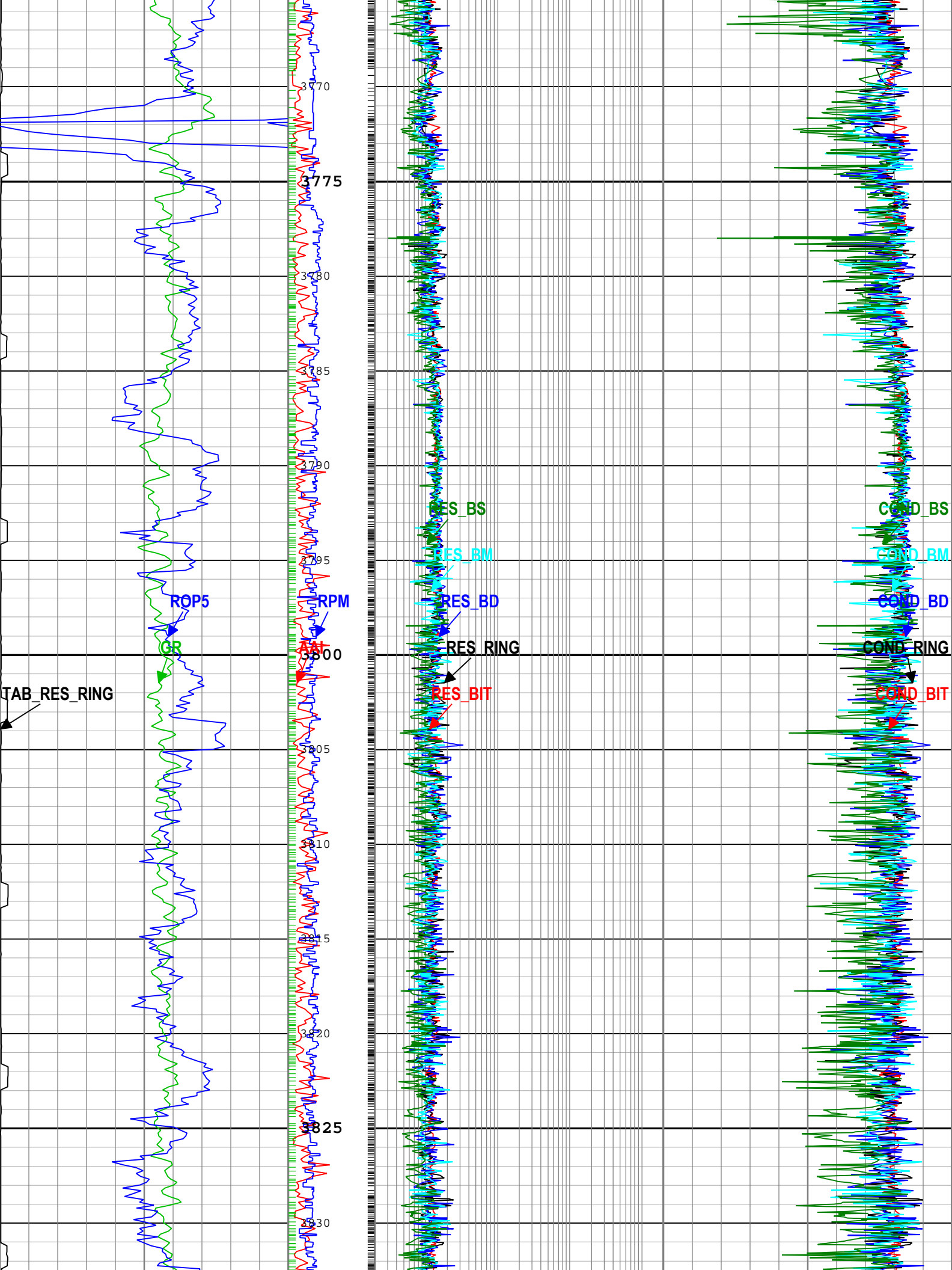
Ring Resistivity Time After Bit (TAB_RES_RING) RAB6		Angular Acceleration Indicator (AAI) RAB6 RM	Bit Resistivity (RES_BIT) RAB6 RM		Bit Conductivity (COND_BIT) RAB6 RM			
0	h		10	0.2	ohm.m	2000	4000	mS/m
Gamma Ray (GR) RAB6 RM		Rotational Speed (RPM) RAB6 RM	Ring Resistivity (RES_RING) RAB6 RM		Ring Conductivity (COND_RING) RAB6 RM			
0	gAPI		150	0.2	ohm.m	2000	4000	mS/m
Rate of penetration averaged over the last 5 ft (1.5 m) (ROP5) RT		Medium Button Resistivity (RES_BM) RAB6 RM	Deep Button Resistivity (RES_BD) RAB6 RM		Deep Button Conductivity (COND_BD) RAB6 RM			
100	m/h		0	0.2	ohm.m	2000	4000	mS/m
		Shallow Button Resistivity (RES_BS) RAB6 RM	Medium Button Resistivity (RES_BM) RAB6 RM		Medium Button Conductivity (COND_BM) RAB6 RM			
			0	0.2	ohm.m	2000	4000	mS/m
		Shallow Button Resistivity (RES_BS) RAB6 RM	Shallow Button Resistivity (RES_BS) RAB6 RM		Shallow Button Conductivity (COND_BS) RAB6 RM			
			0	0.2	ohm.m	2000	4000	mS/m



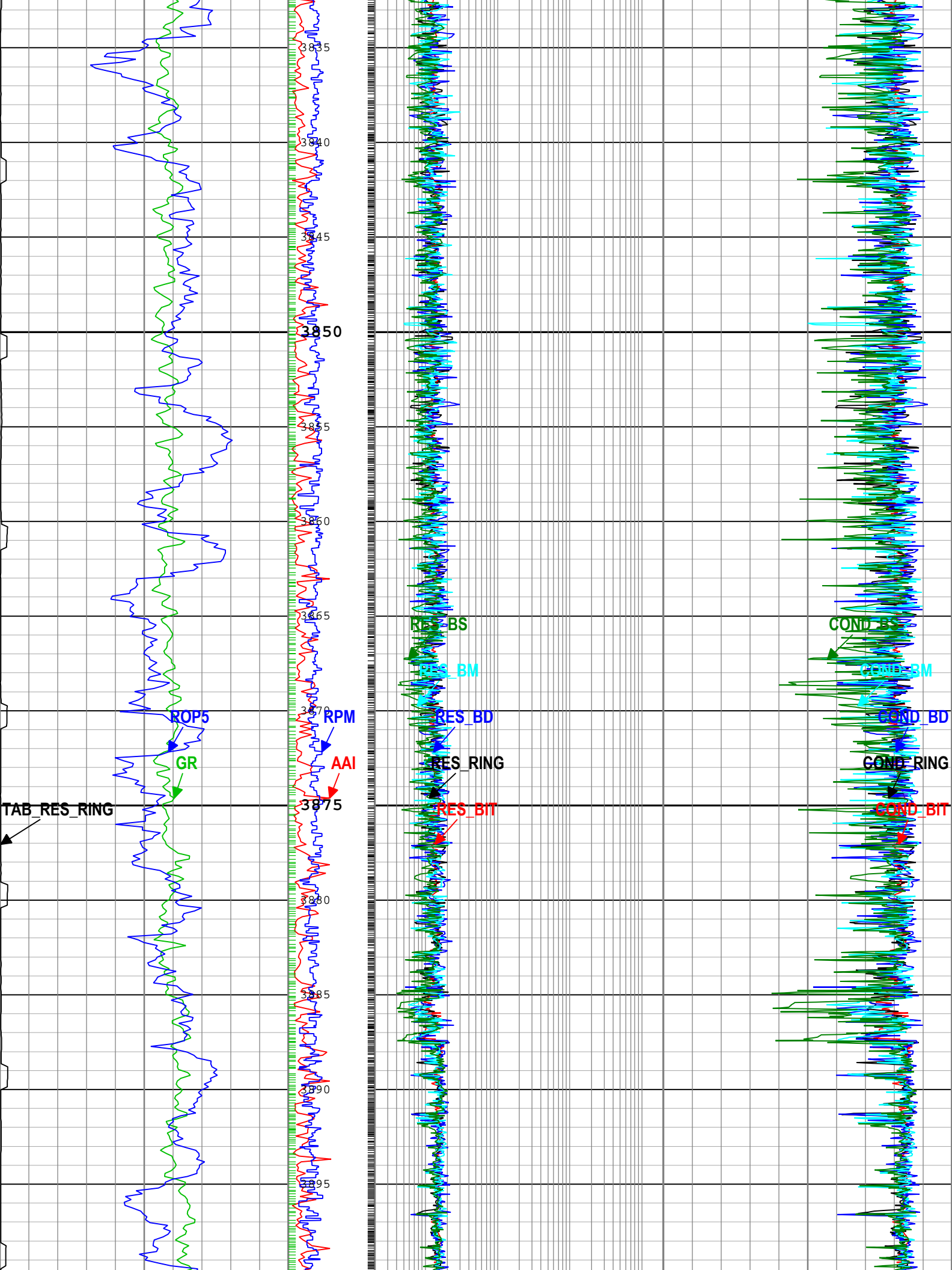


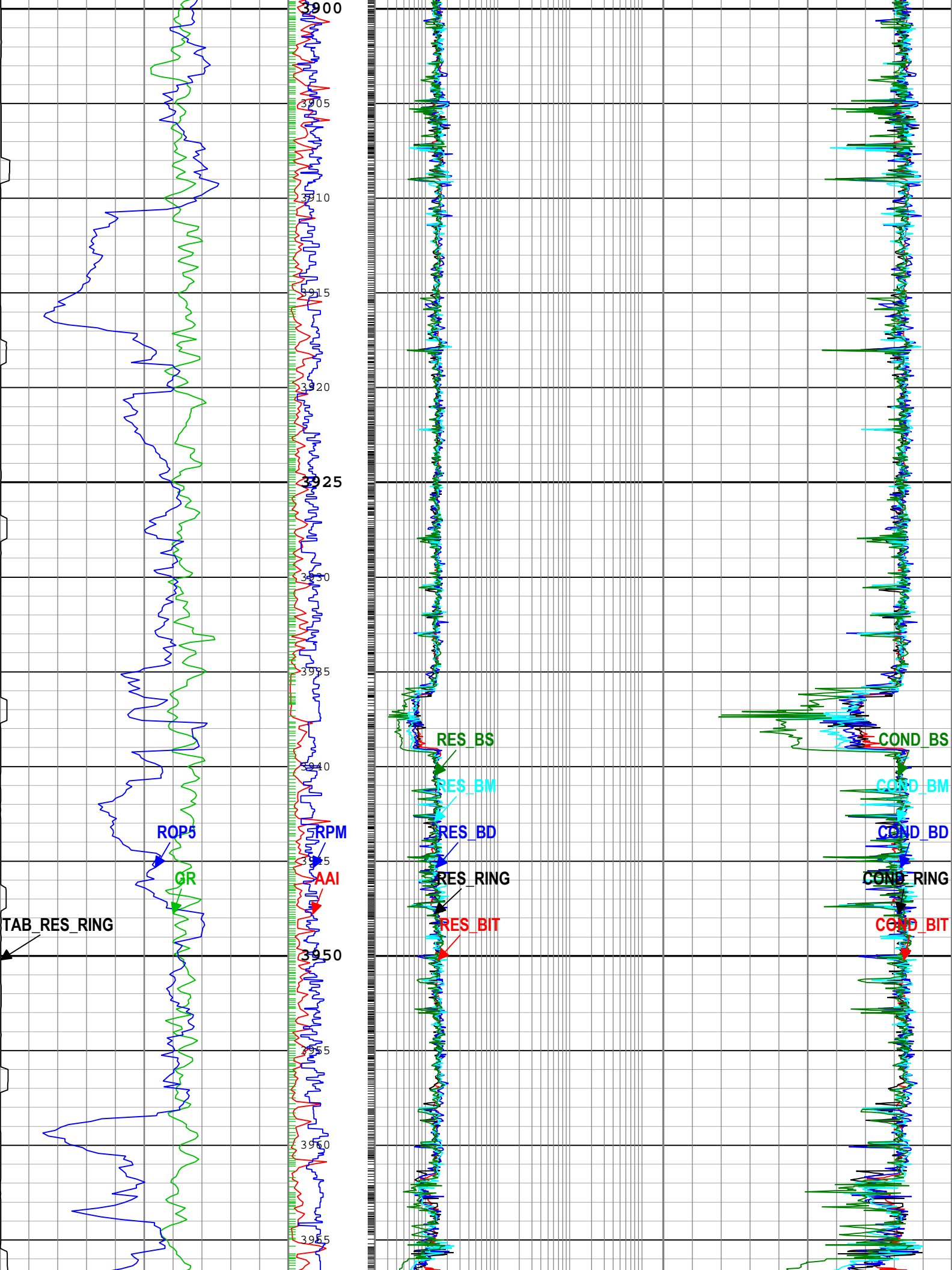




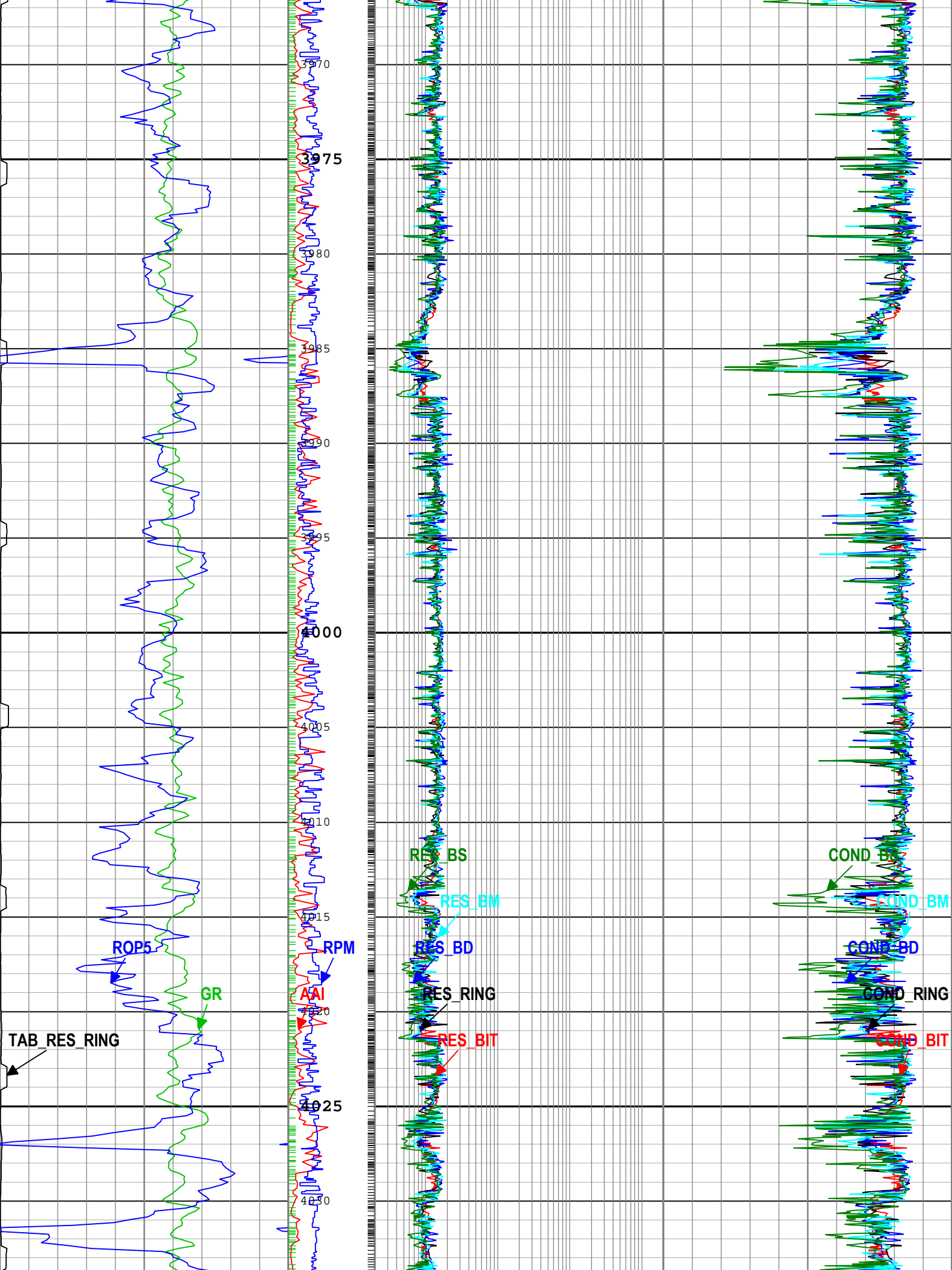


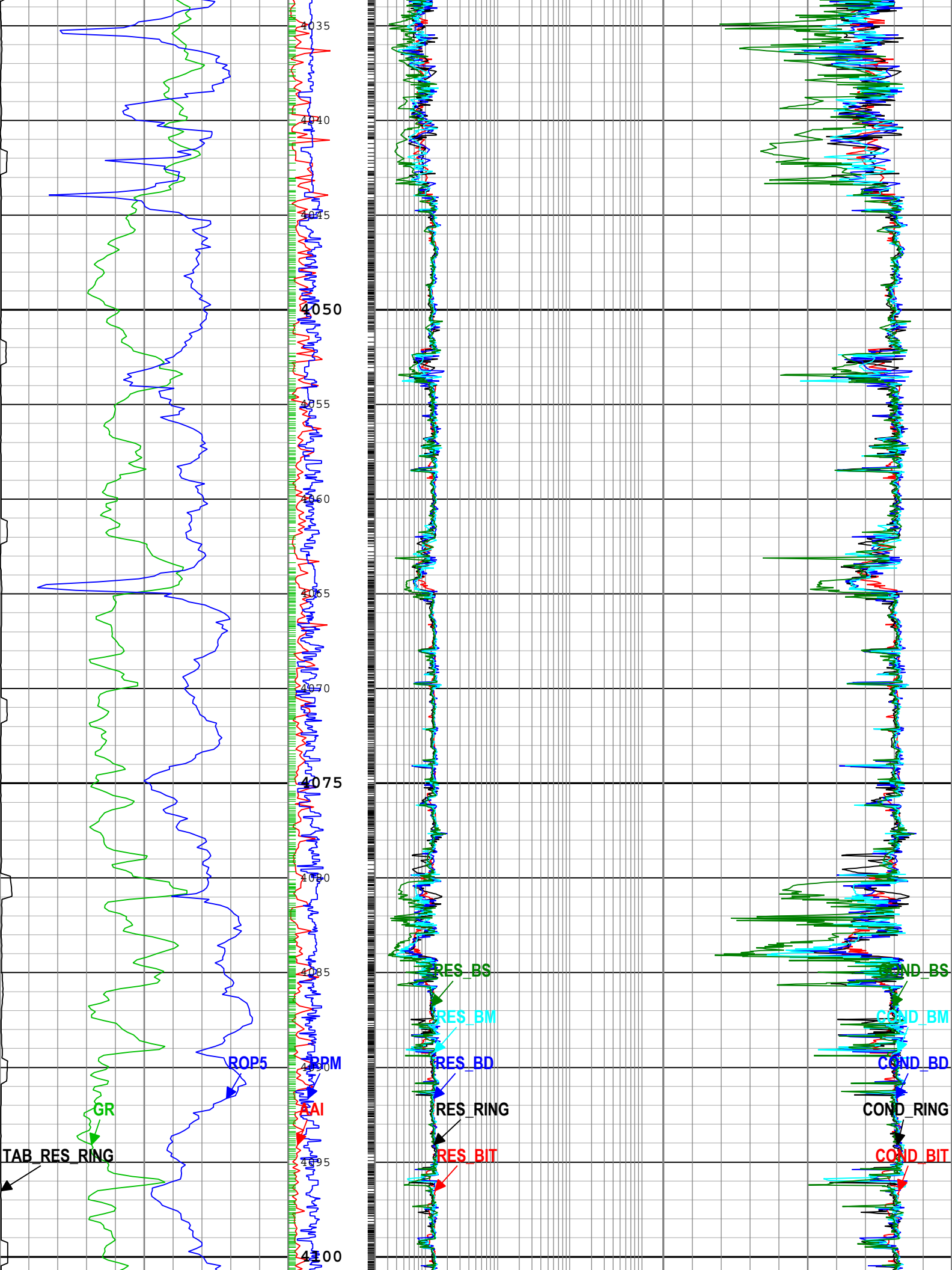


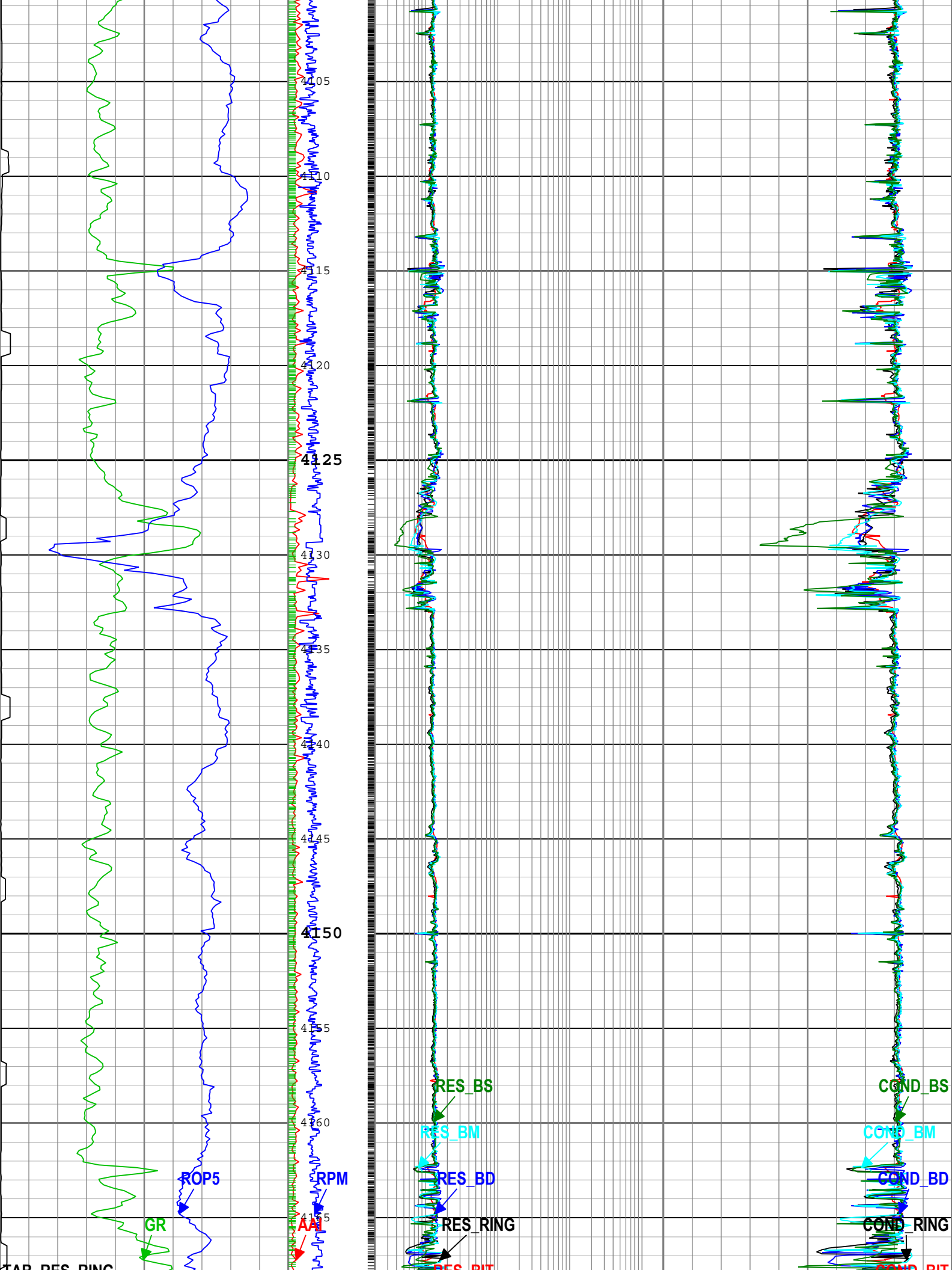


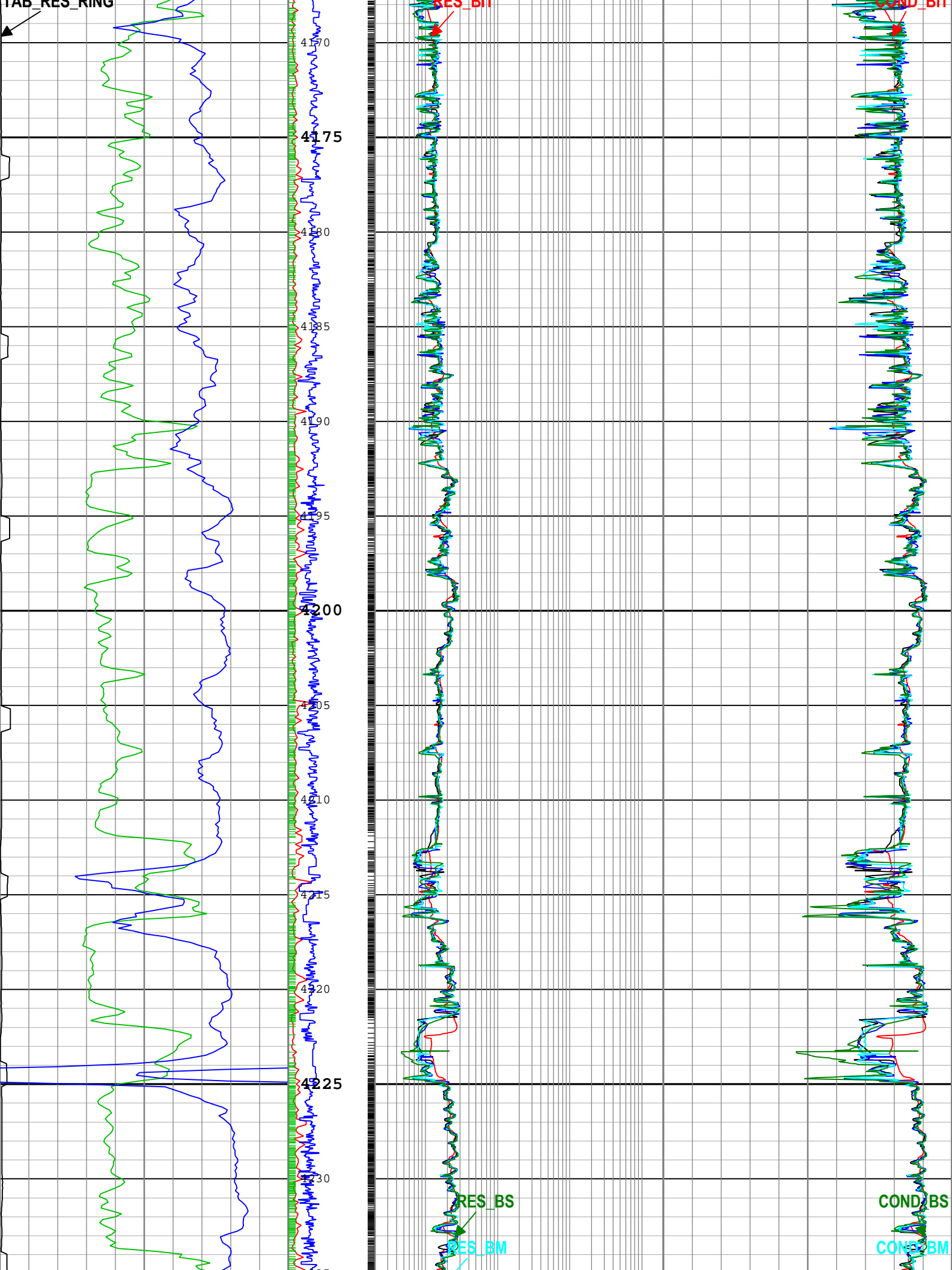


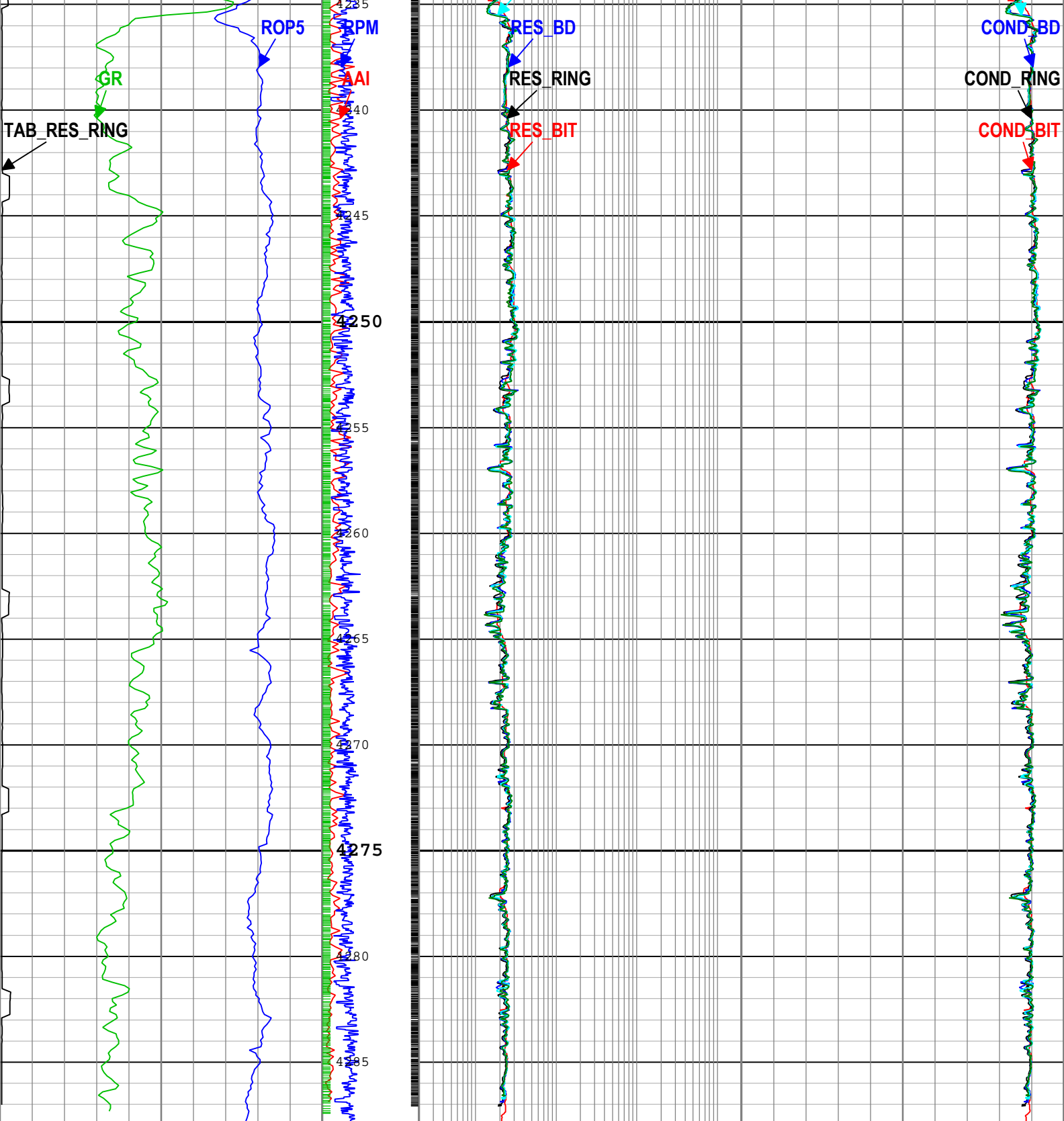












Ring Resistivity Time After Bit (TAB_RES_RING) RAB6	Angular Acceleration Indicator (AAI) RAB6 RM	Bit Resistivity (RES_BIT) RAB6 RM	Bit Conductivity (COND_BIT) RAB6 RM
0 h 10	0 200	0.2 ohm.m 2000	4000 mS/m 0
Gamma Ray (GR) RAB6 RM	Rotational Speed (RPM) RAB6 RM	Ring Resistivity (RES_RING) RAB6 RM	Ring Conductivity (COND_RING) RAB6 RM
0 gAPI 150	0 200	0.2 ohm.m 2000	4000 mS/m 0
Rate of penetration averaged over the last 5 ft (1.5 m) (ROP5) RT	Rate of Penetration (ROP5) RAB6 RM	Deep Button Resistivity (RES_BD) RAB6 RM	Deep Button Conductivity (COND_BD) RAB6 RM
100 m/h 0	0 c/min 200	0.2 ohm.m 2000	4000 mS/m 0
		Medium Button Resistivity (RES_BM) RAB6 RM	Medium Button Conductivity (COND_BM) RAB6 RM
		0.2 ohm.m 2000	4000 mS/m

Shallow Button Resistivity (RES_BS) RAB6 RM		
0.2	ohm.m	2000

Shallow Button Conductivity (COND_BS) RAB6 RM		
4000	mS/m	0

└─TICKS\_RING - Ring Sample Tick Marks RAB6 RM

└─TICKS\_GR - Gamma Ray Tick Marks RAB6 RM

Description: GVR Resistivity Conductivity Format: Log ( FINAL GVR LOG 1 ) Index Scale: 1:240 Index Unit: m Index Type: Measured Depth Creation Date: 31-Dec-2017 19:30:05

## Channel Processing Parameters

### Run 1: Parameters

Parameter	Description	Tool	Value	Unit
BHK	Drilling Fluid Potassium Concentration	Borehole	0	%
BHT	Bottom Hole Temperature	Borehole	7	degC
BS	Bit Size	DNMSESSION	8.5	in
DFD	Drilling Fluid Density	Borehole	8.6	lbm/gal
DFT_CATEGORY	Drilling Fluid Type	Borehole	Water	
GRSE_RM	Generalized Mud Resistivity Selection for Recorded Mode	Borehole	REMS(RM)	
GTSE_RM	Generalized Temperature Selection for Recorded Mode	Borehole	DHAT(RM)	
MST	Mud Sample Temperature	Borehole	23.89	degC
RMS	Resistivity of Mud Sample	Borehole	0.2	ohm.m
TEMP_SEL_RAB	RAB Temperature Selection	RAB6	Tool	

## Tool Control Parameters



**Company:** IODP  
**Well:** U1520B  
**Field:** HSM-05A  
**Rig Name:** Joides Resolution  
**Expedition:** 372  
**Country:** New Zealand



geoVISION Resistivity  
1:240 Measured Depth  
Recorded Mode Data