

RAB6 (GVR6) Resistivity Processed Images

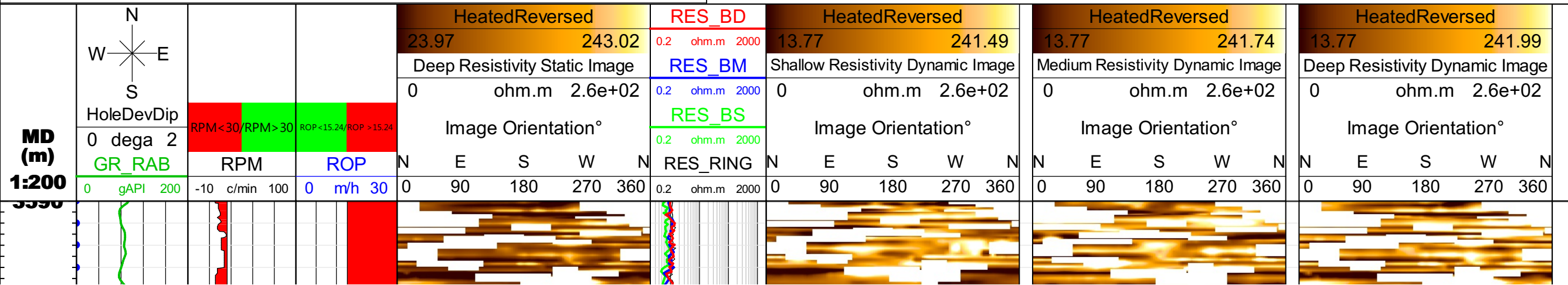
Processed Static & Dynamic Images (Shallow, Medium & Deep) Interval: 3590-4287 m MD, Scale: 1:200

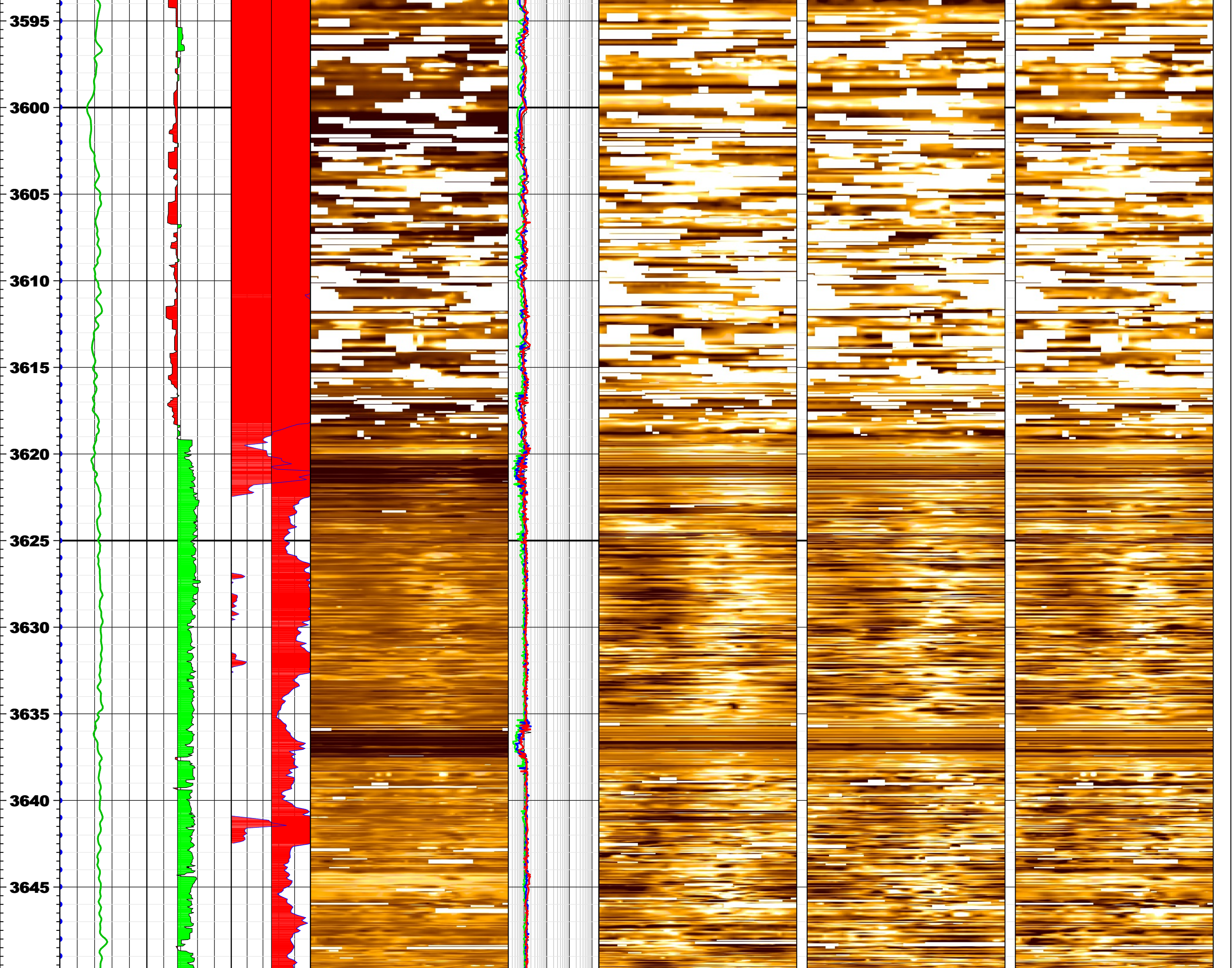
COMPANY:	IODP
WELL:	U1520B
FIELD:	HSM-05A
COUNTRY:	New Zealand
Date Logged:	30-Dec-2017
Date Processed:	02-Jan-2018
Run no.	1
Depth Driller (m):	4288.4 m
Depth Logger (m):	4288.4 m
Elevations (m):	K.B: 0.0 m D.F: 11 m G.L: -3527.3 m
Permanent Datum:	MSL
Log Measured From:	DF 11.00 m above Permanent Datum

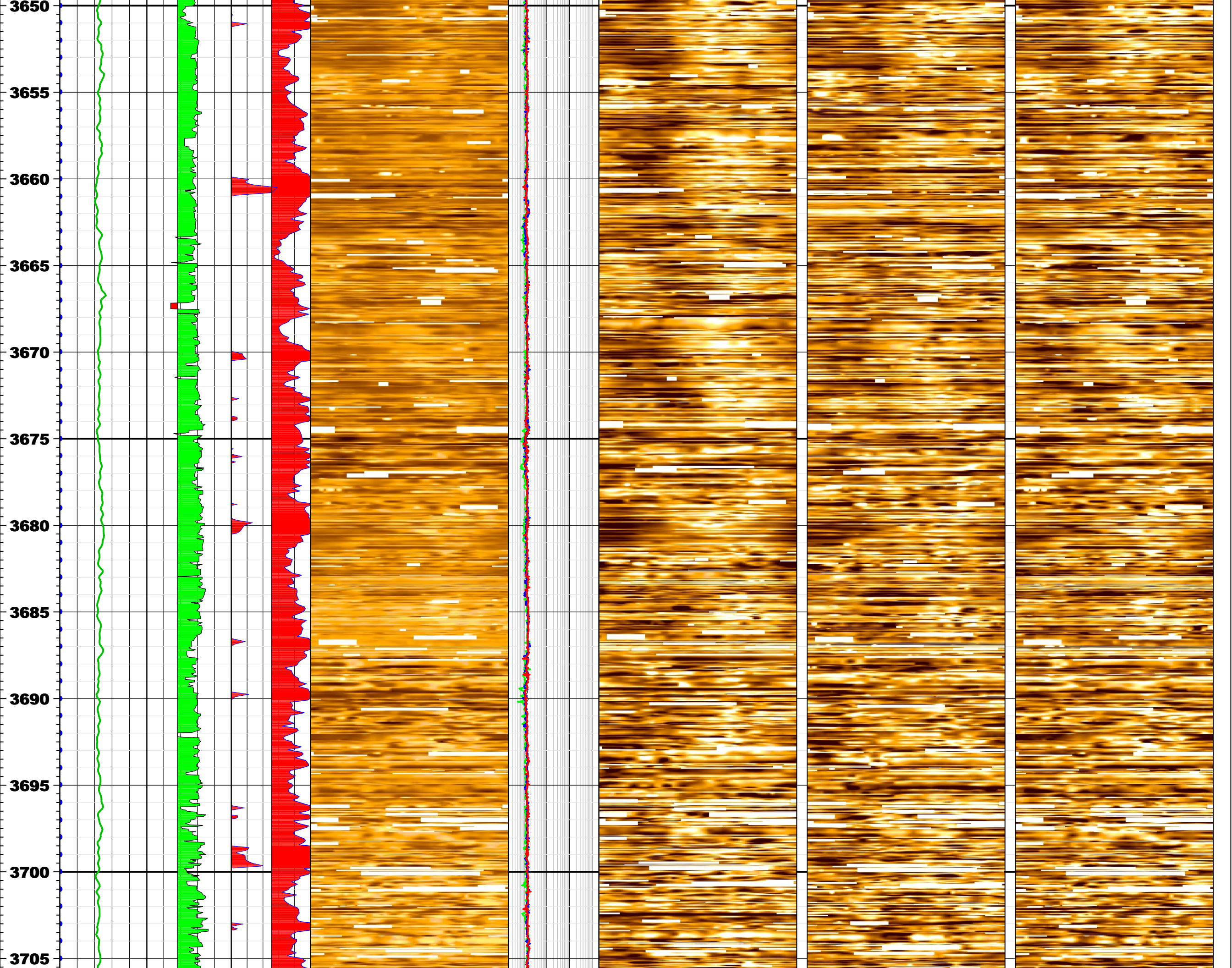
Using the following logs: RAB6-CB, DVM-675, TST675, MWD_10, MP6-B, MRT6-BA		
Field Recording:		
Location:	Software version: Maxwell 7.3.92069	Engineer:
Office Recording:		
Location: DS HUB	Software version: Techlog 2015.3	Geologist: Nancy Buragohain
Mud and Borehole Measurements:		
Rm @ Measured Temperature: 0.2 ohm.m @ 23.889 degC	BHT: 7 deg C	Bitsize: 8.5 inch
Rmf @ Measured Temperature: 0.15 ohm.m @ 20 degC	Fluid in Hole: Sea Water	Mud Density: 8.6 lbm/gal
Rmc @ Measured Temperature: -999.25 ohm.m @ 20 degC	Mud pH: -999.25	Fluid Loss: -999.25cc

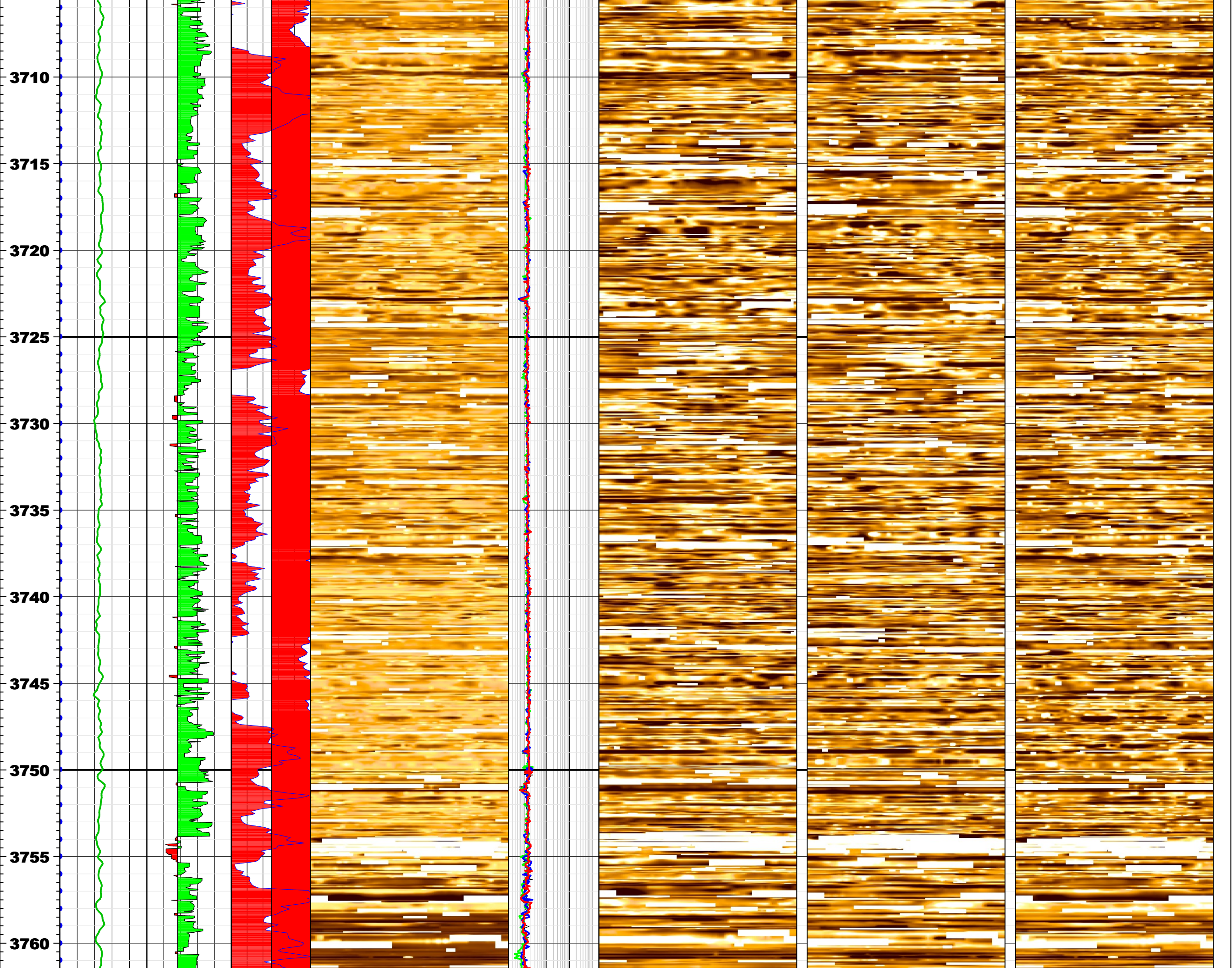
Remarks:

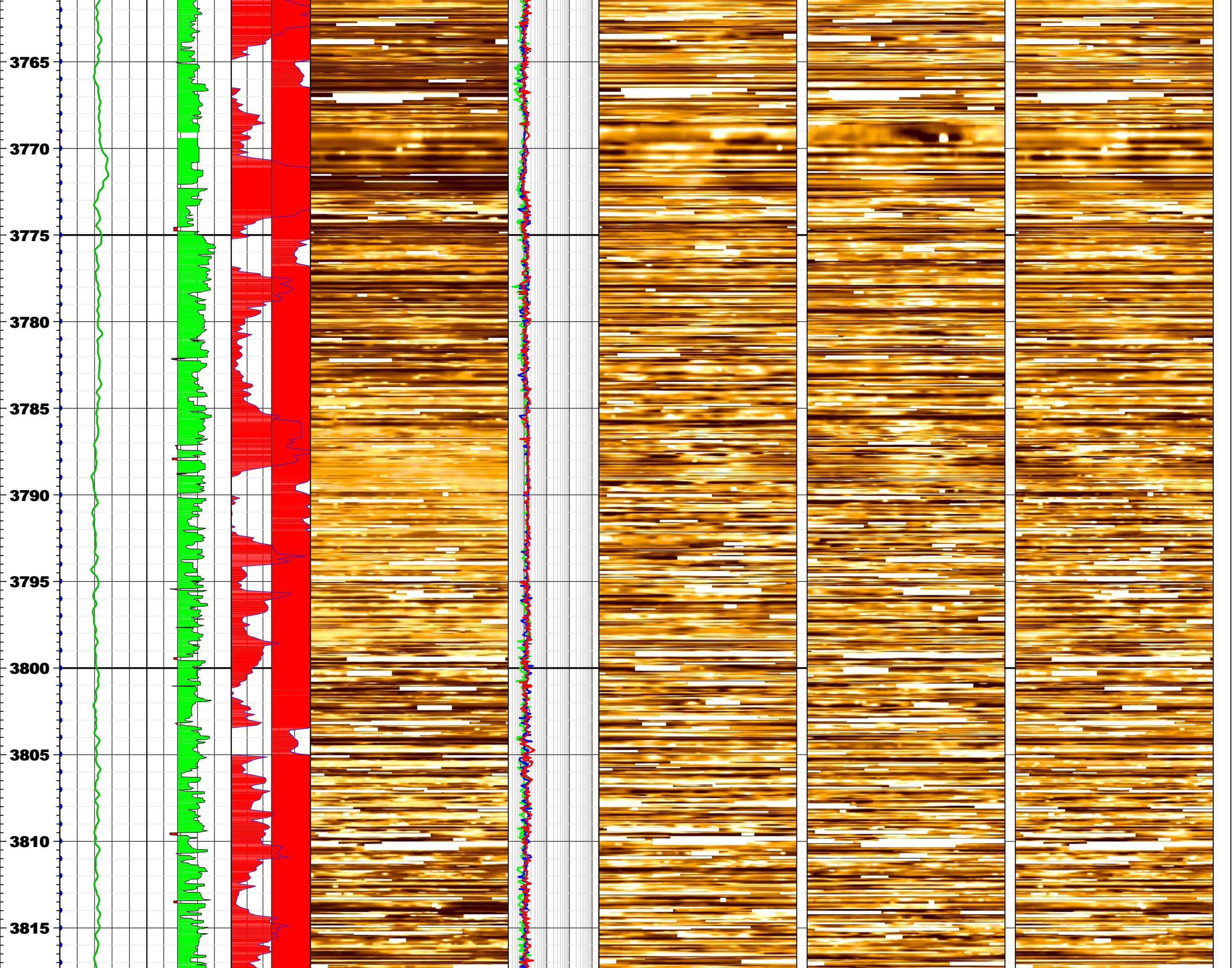
Any interpretation, research, analysis, data, results, estimates, or recommendation furnished with the services or otherwise communicated by Schlumberger to the customer at any time in connection with the services are opinions based on inferences from measurements, empirical relationships, and/or assumptions; which, inferences, empirical relationships and/or assumptions are not infallible and with respect to which professionals in the industry may differ. Accordingly, Schlumberger cannot and does not warrant the accuracy, correctness, or completeness of any such interpretation, research, analysis, data, results, estimates, or recommendation. The customer acknowledges that it is accepting the services "as is," that Schlumberger makes no representation or warranty, express or implied, of any kind or description in respect thereto, and that such services are delivered with the explicit understanding and agreement that any action taken based on the services received shall be at its own risk and responsibility, and no claim shall be made against Schlumberger as a consequence thereof.

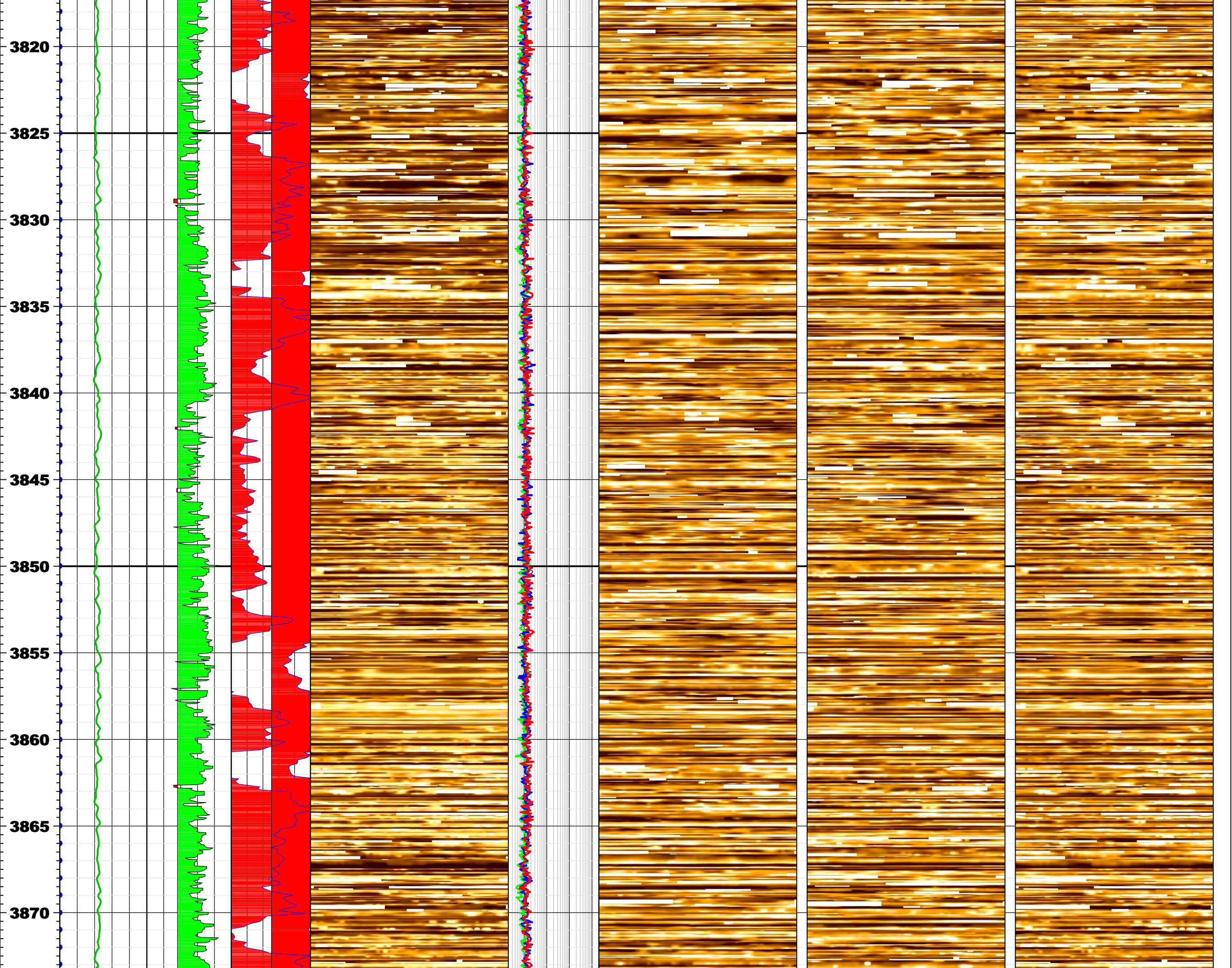


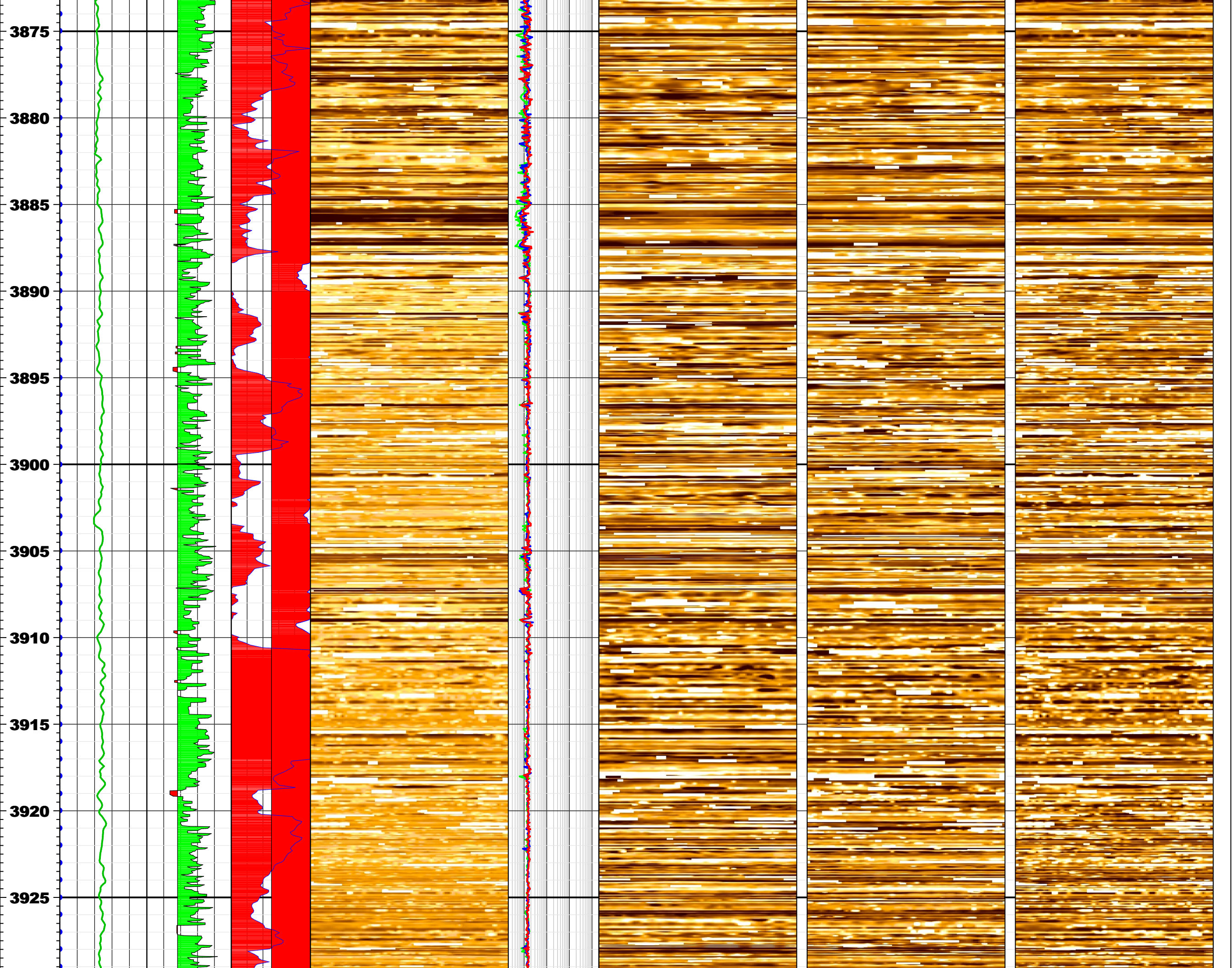


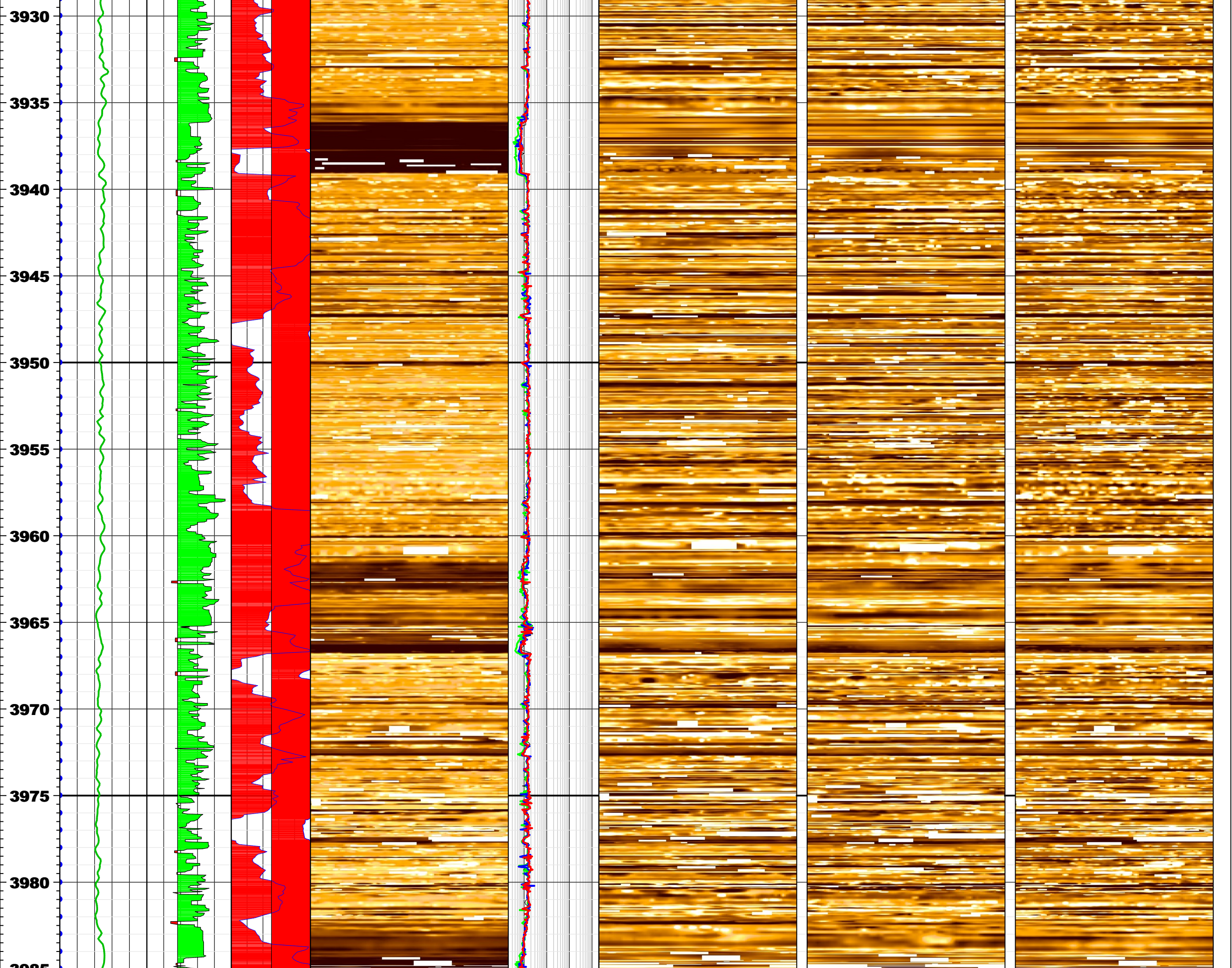


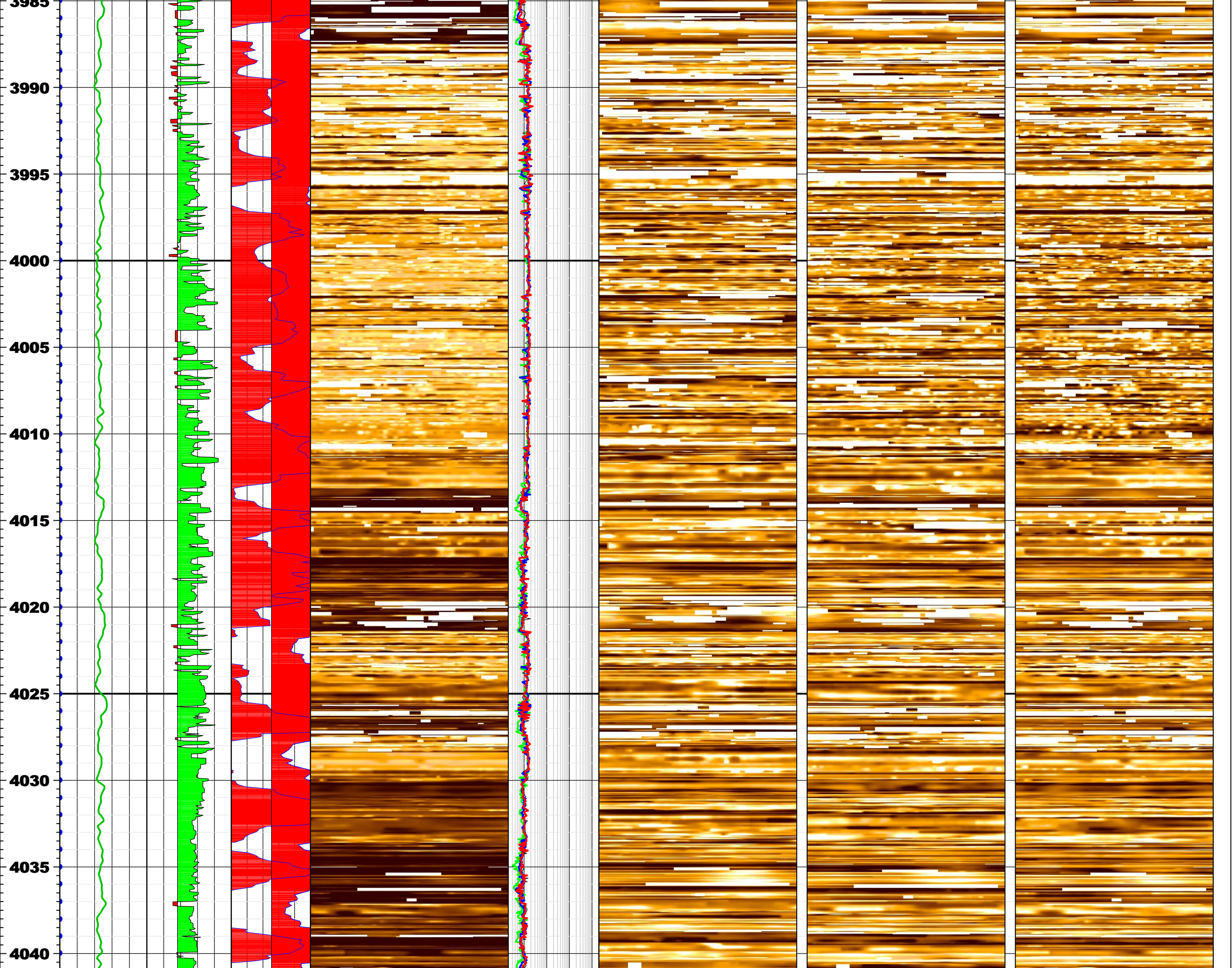


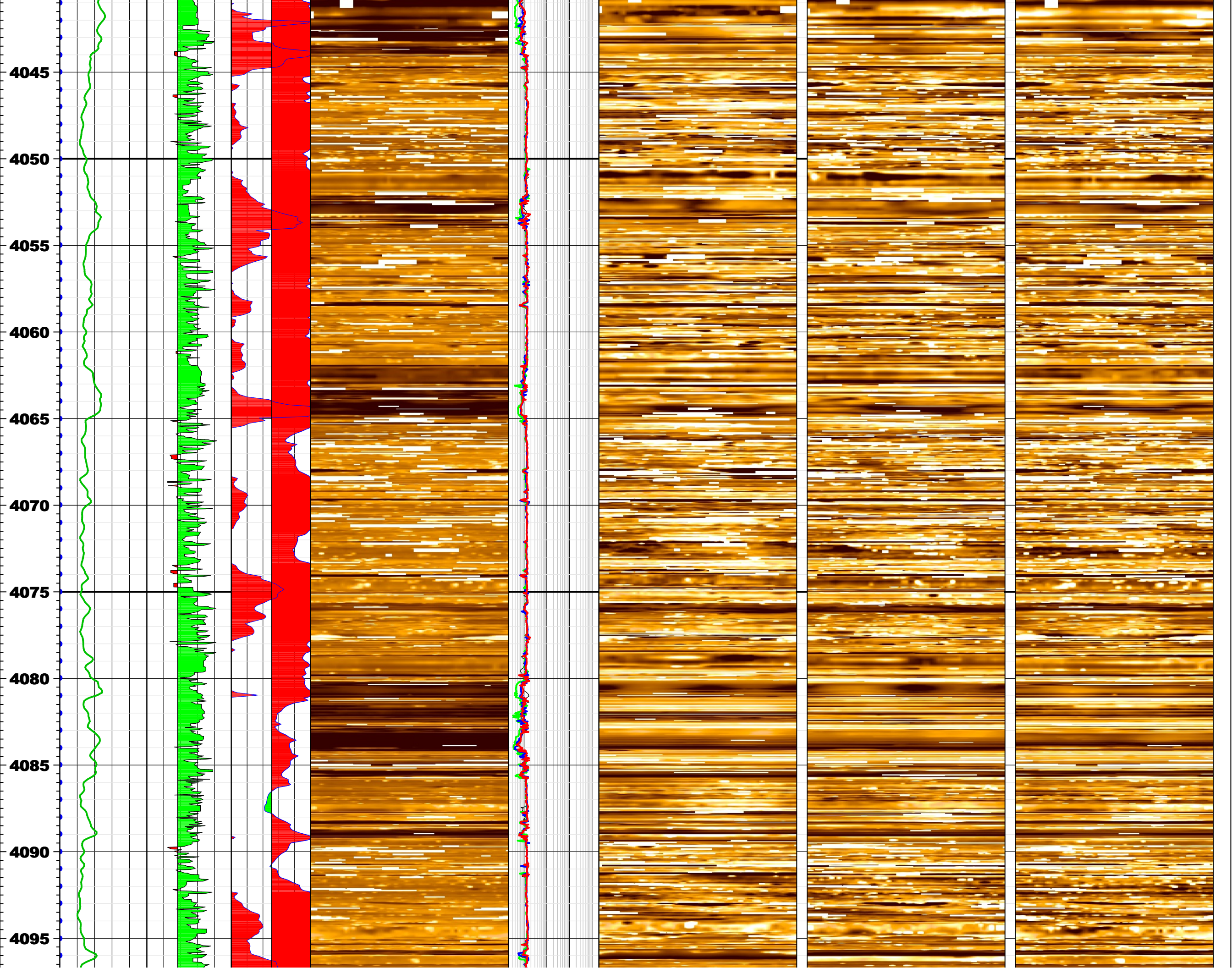


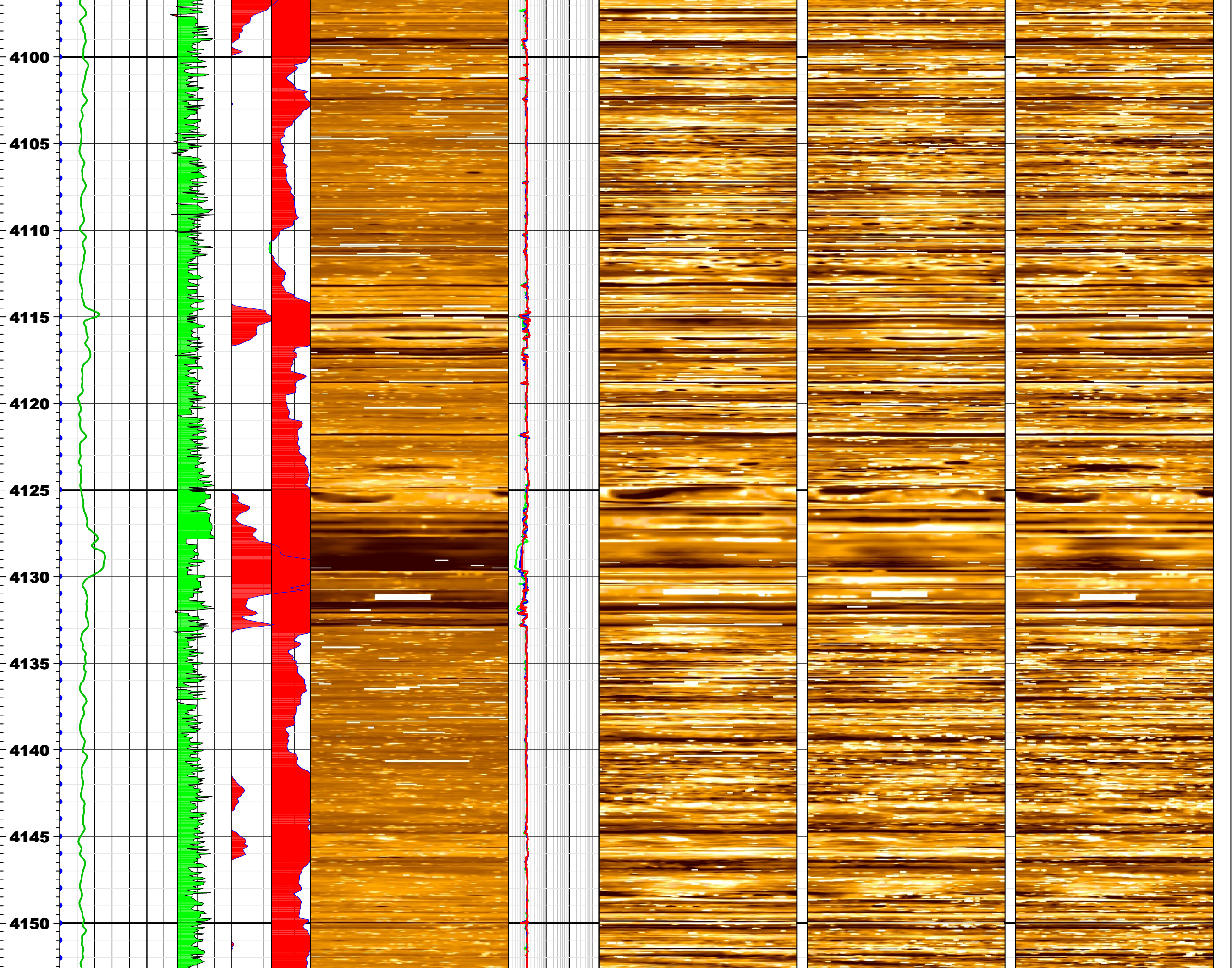


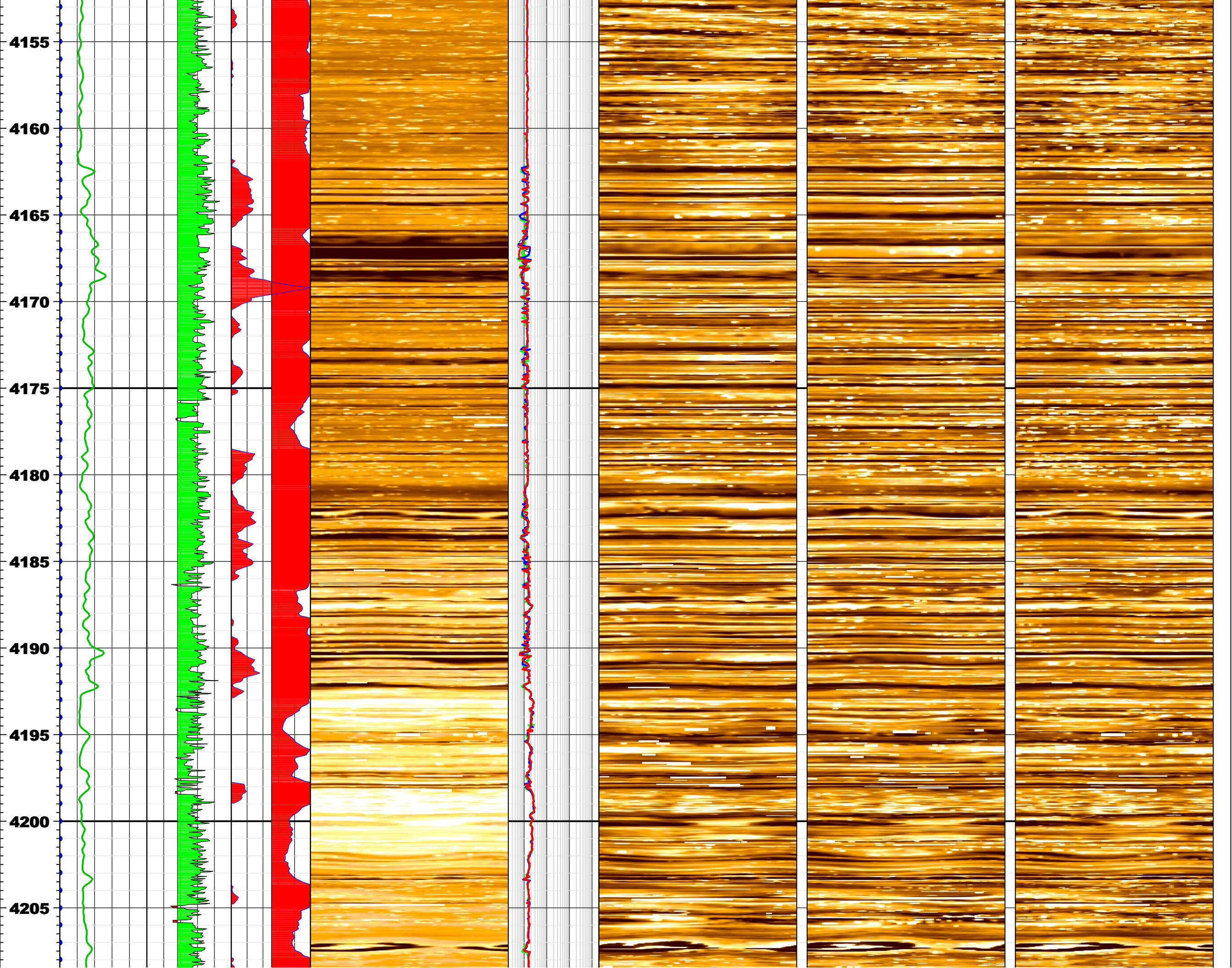


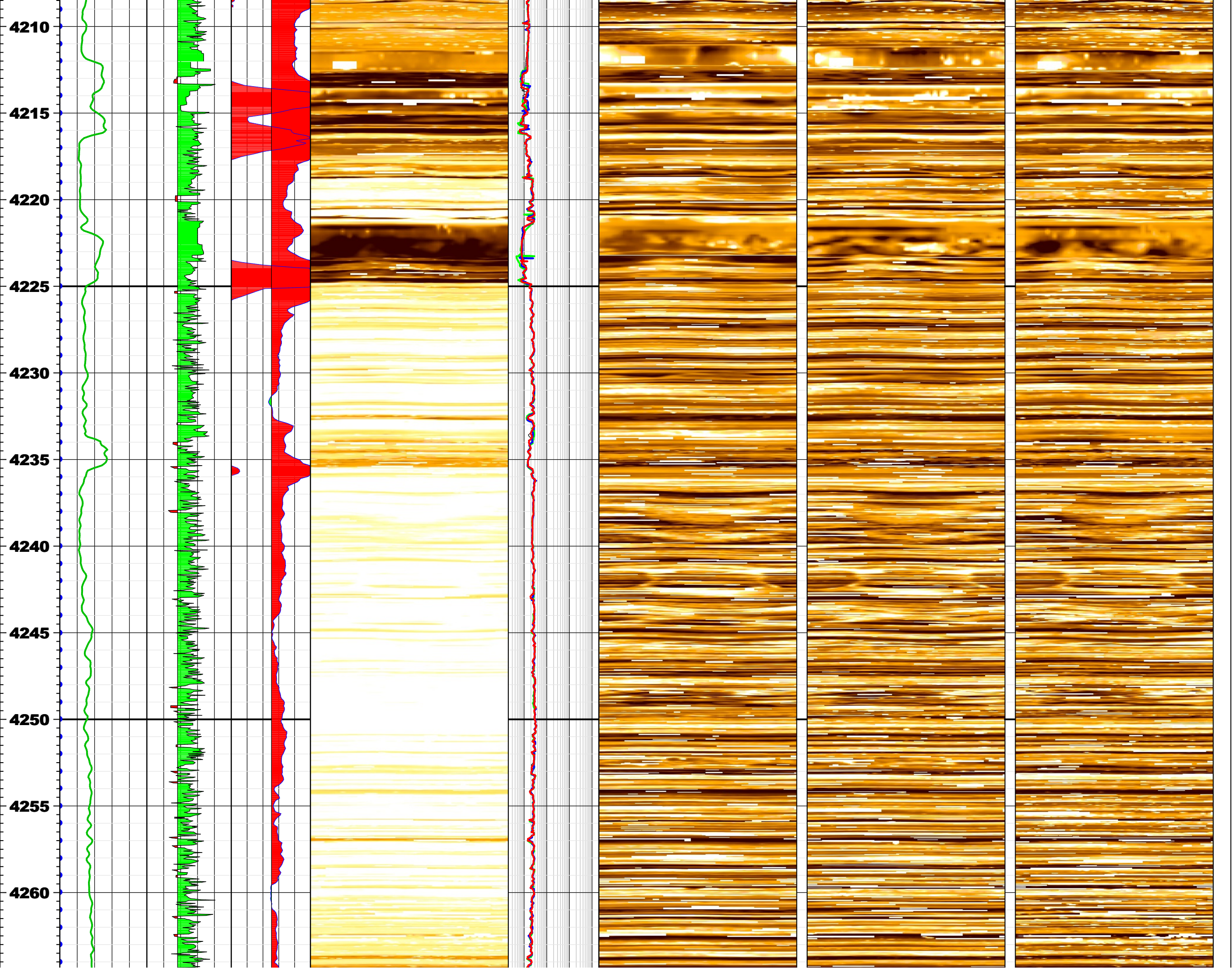


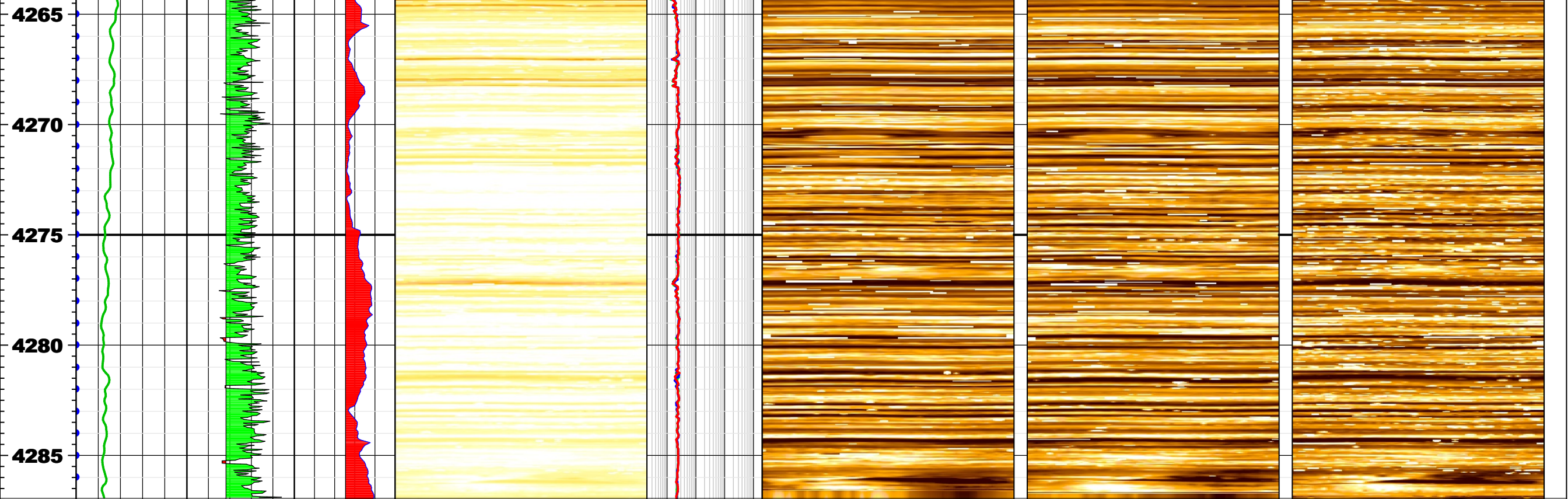












MD (m) 1:200				HeatedReversed	RES_BD	HeatedReversed	HeatedReversed	HeatedReversed
	HoleDevDip			23.97 243.02	0.2 ohm.m 2000	13.77 241.49	13.77 241.74	13.77 241.99
	0 dega 2	RPM<30/RPM>30	ROP<15.24/ROP>15.24	Deep Resistivity Static Image	RES_BM	Shallow Resistivity Dynamic Image	Medium Resistivity Dynamic Image	Deep Resistivity Dynamic Image
	GR_RAB	RPM	ROP	0 ohm.m 2.6e+02	0.2 ohm.m 2000	0 ohm.m 2.6e+02	0 ohm.m 2.6e+02	0 ohm.m 2.6e+02
	0 gAPI 200	-10 c/min 100	0 m/h 30	Image Orientation°	RES_BS	Image Orientation°	Image Orientation°	Image Orientation°
			N E S W N	0.2 ohm.m 2000	N E S W N	N E S W N	N E S W N	N E S W N
			0 90 180 270 360		0 90 180 270 360	0 90 180 270 360	0 90 180 270 360	0 90 180 270 360