

U1520B

SonicScope

Compressional and Shear Slowness Plot

* A Mark of Schlumberger

Using the following logs: SonicScope, NeoScope

COMPANY: IODP

WELL: U1520B

FIELD: HSM-05A

COUNTRY: New Zealand

Date Logged: 30-Dec-2017

Date Processed: 03-Jan-2018

Surface Location Longitude: 178° 7' 56.1" E

Latitude: 38° 58' 9.84" S

Elevations: DF: 11 m

GL: -3527.3 m

FOLD HERE:

The well name, location and borehole reference data were furnished by the customer.

Any interpretation, research, analysis, data, results, estimates, or recommendation furnished with the services or otherwise communicated by Schlumberger to the customer at any time in connection with the services are opinions based on inferences from measurements, empirical relationships, and/or assumptions; which, inferences, empirical relationships and/or assumptions are not infallible and with respect to which professionals in the industry may differ. Accordingly, Schlumberger cannot and does not warrant the accuracy, correctness, or completeness of any such interpretation, research, analysis, data, results, estimates, or recommendation. The customer acknowledges that it is accepting the services "as is," that Schlumberger makes no representation or warranty, express or implied, of any kind or description in respect thereto, and that such services are delivered with the explicit understanding and agreement that any action taken based on the services received shall be at its own risk and responsibility, and no claim shall be made against Schlumberger as a consequence thereof.

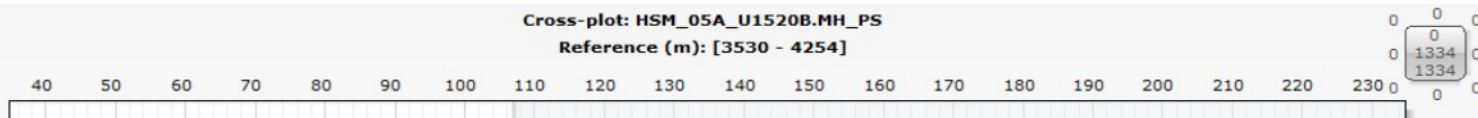
| | | | |
|---------------|----------------------|--------------------|----------------------------|
| Svc. Order #: | Techlog Vers: 2017.2 | Analyst: P. Bhuyan | Process Date: 03- Jan-2018 |
|---------------|----------------------|--------------------|----------------------------|

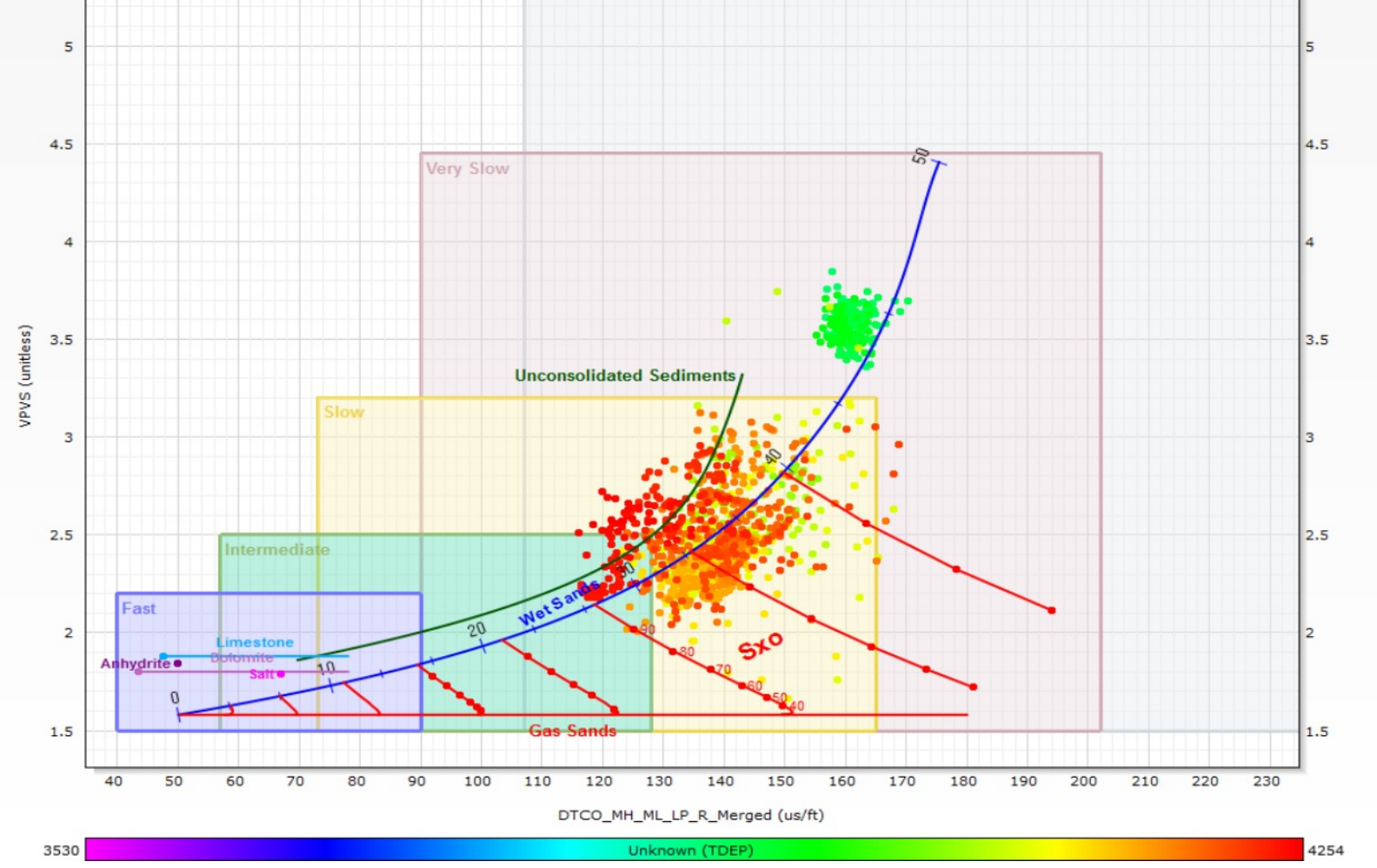
| | | |
|--------------------------------|-------------------------------|------------------|
| Mud and Borehole Measurements: | | |
| Casing Size: | BHT : 7 degC | Bit Size: 8.5 in |
| Casing ID: | Type Fluid in Hole: Sea Water | |
| Casing Weight: | Mud density: 1.03 gm/cc | |

Remarks:

Data might be affected due to borehole condition and mud contamination.
 Monopole Low (3530-3692m) and High (3690-4254m) waveforms are processed to get formation compressional slowness
 The compressional slowness from Monopole Low and High waveforms have been spliced at 3691m (MD)

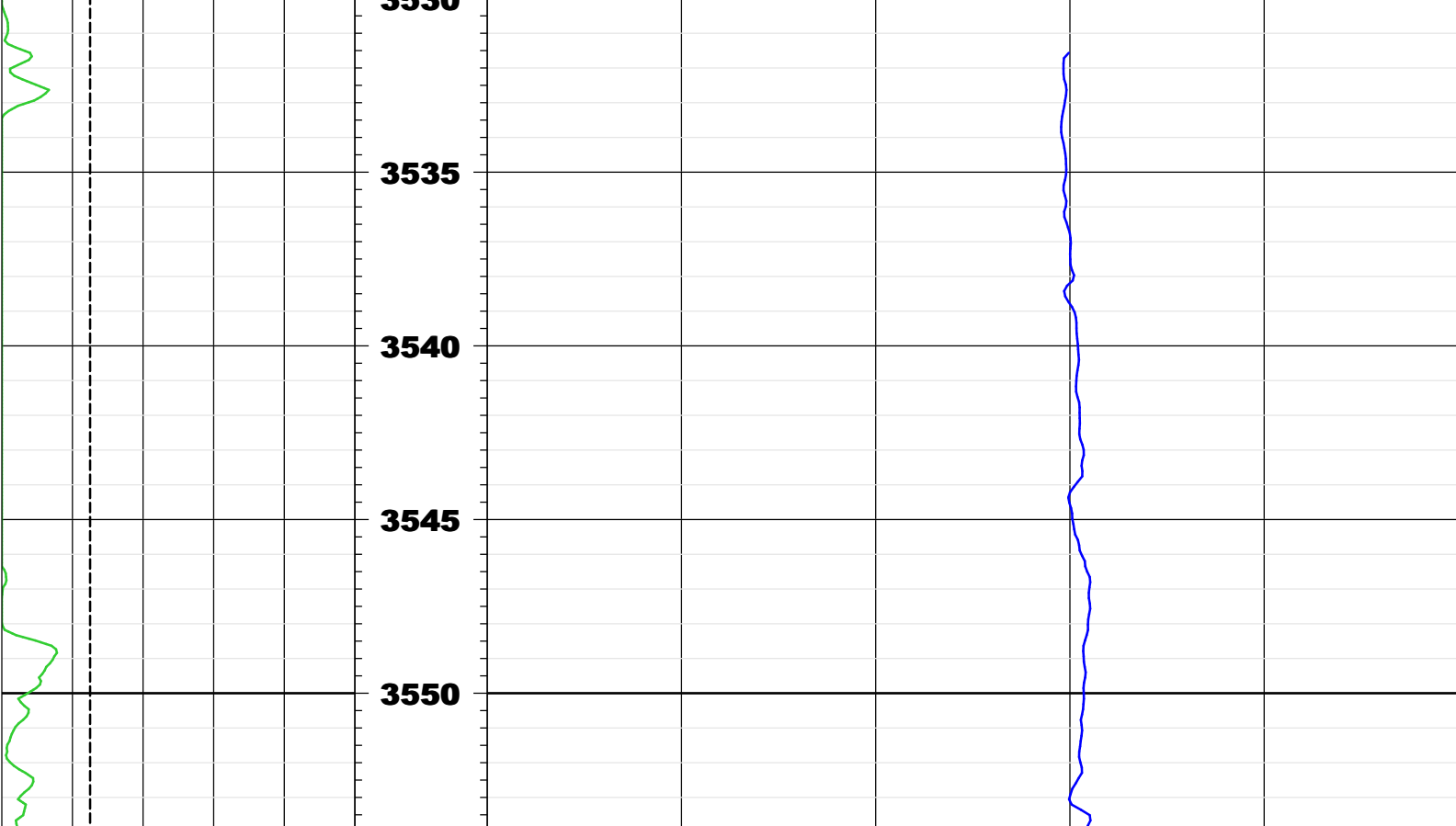
Cross-plot: HSM_05A_U1520B.MH_PS
 Reference (m): [3530 - 4254]

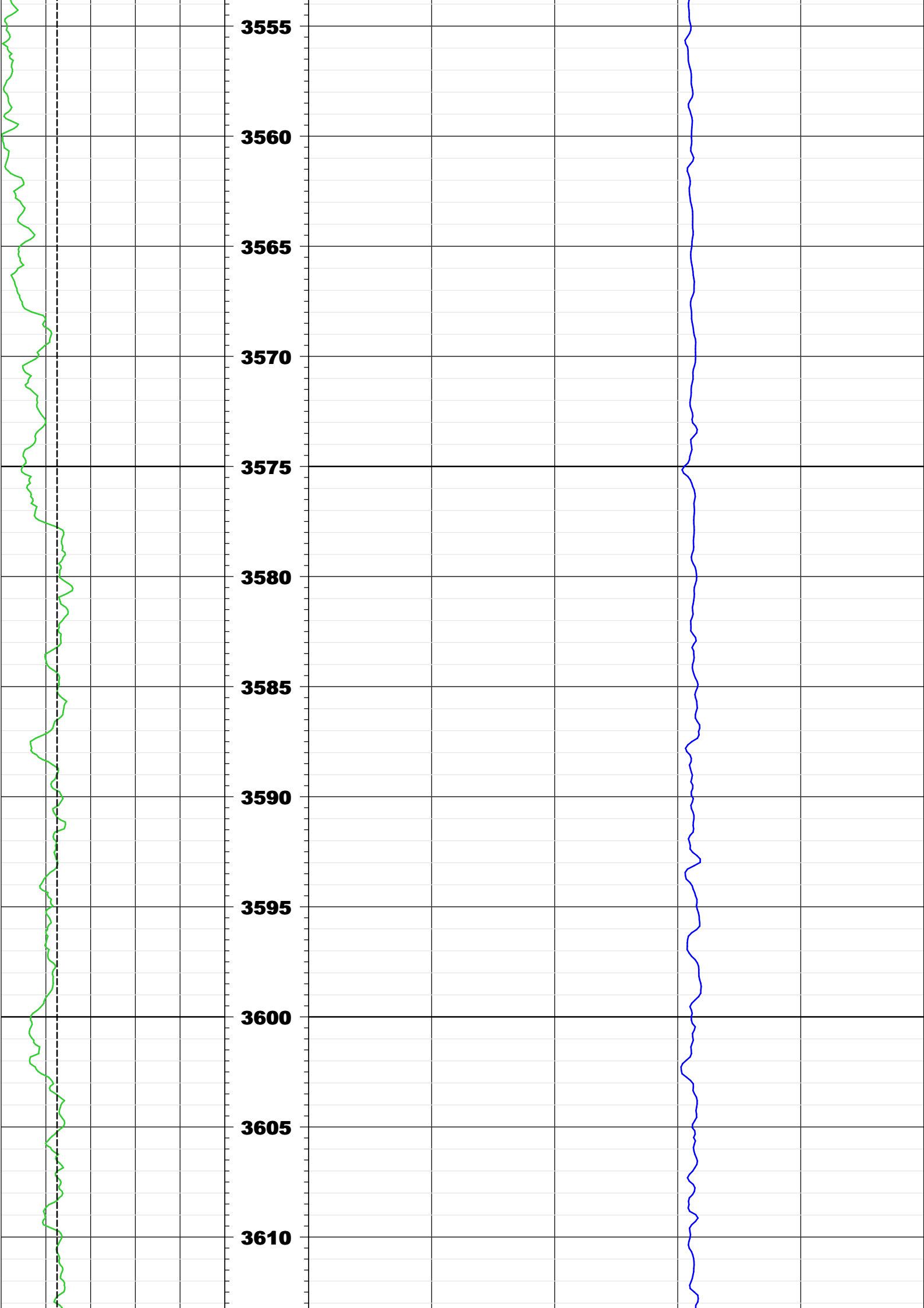


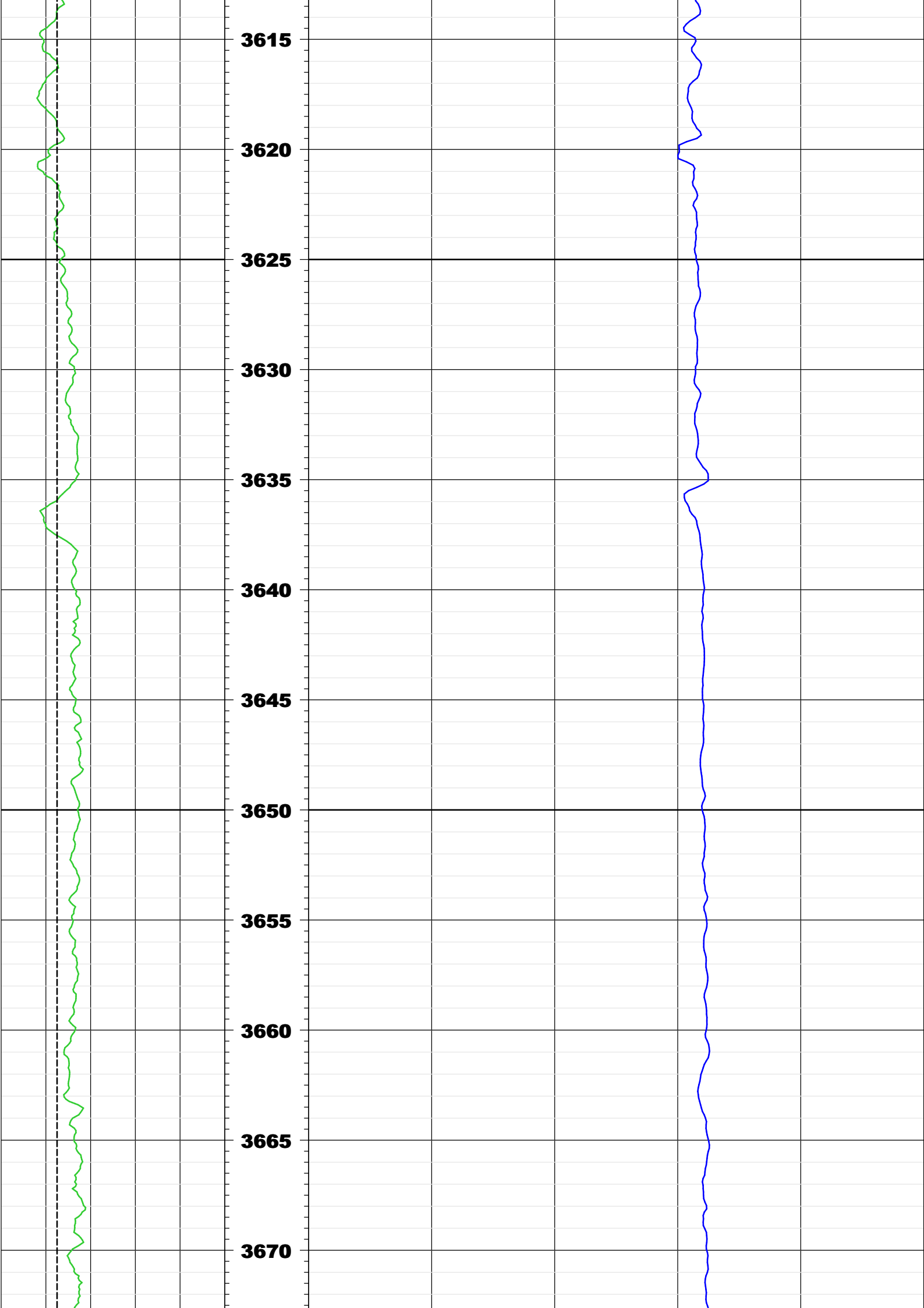


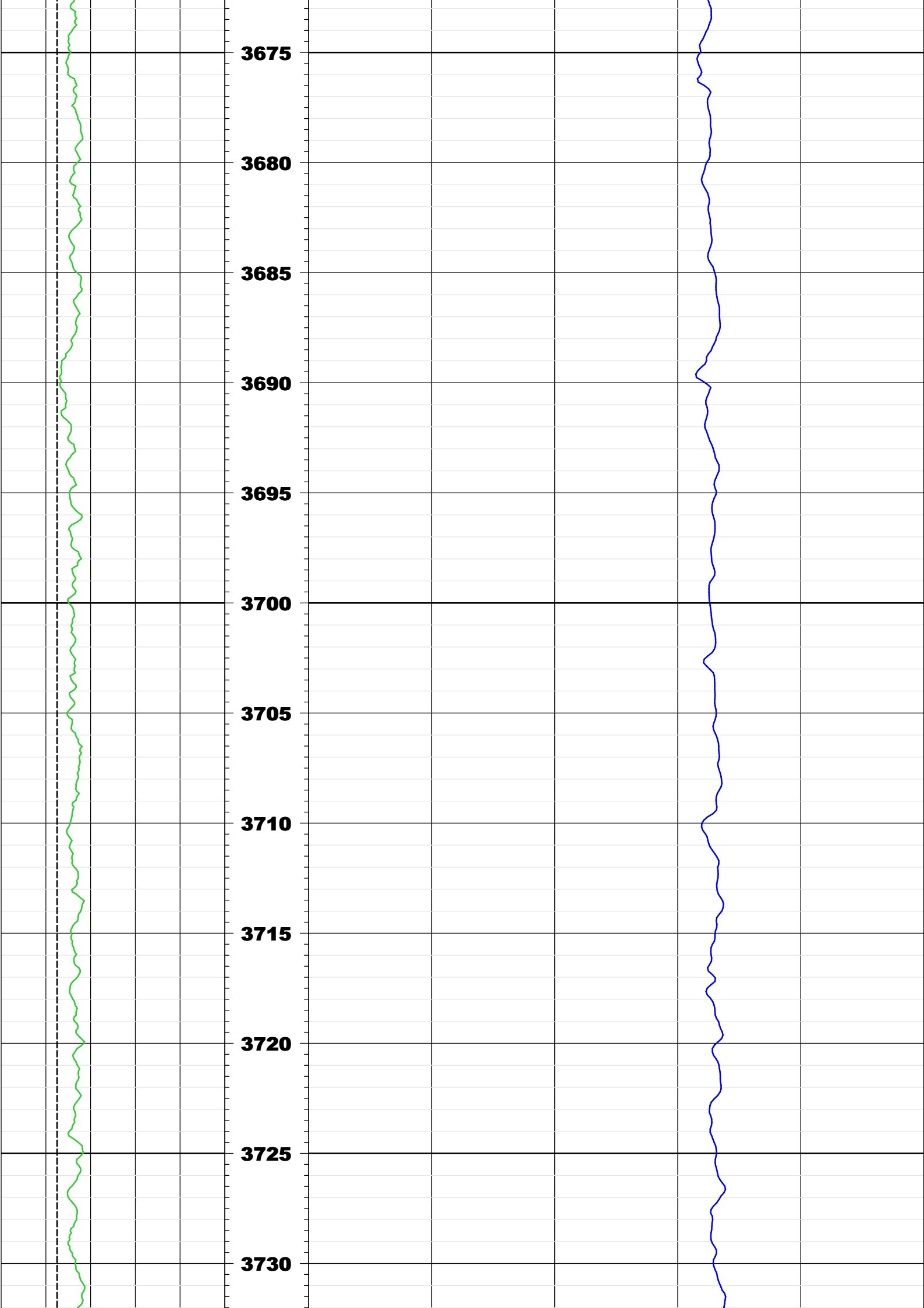
| | | |
|------|----------|-----|
| PR | | |
| 0 | unitless | 0.5 |
| VPVS | | |
| 0 | unitless | 5 |
| BS | | |
| 6 | in | 16 |
| GRMA | | |
| 0 | gAPI | 200 |

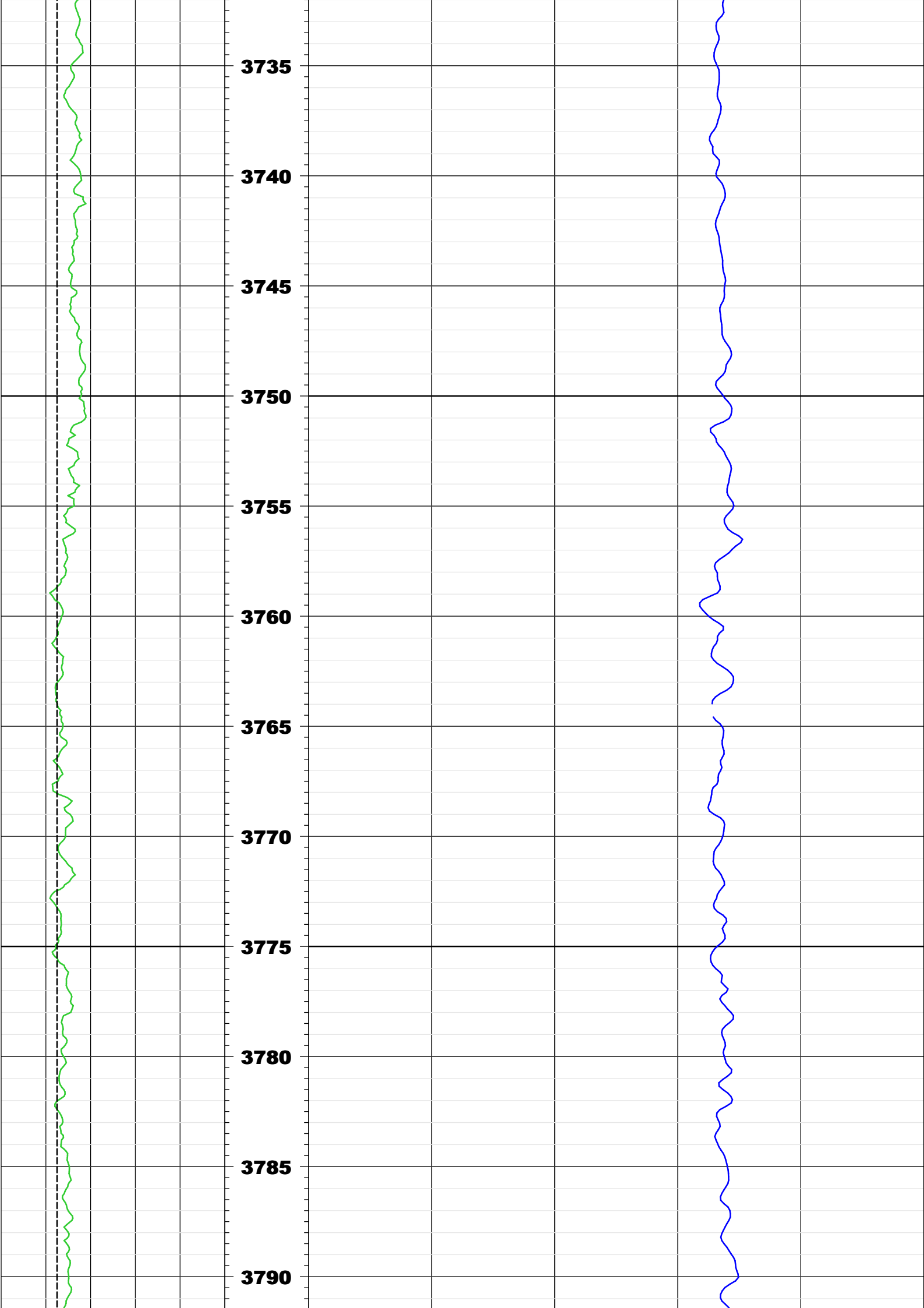
| | | |
|---------------|------------------------------|----|
| MD (m) | Shear Delta-T (DTSM) | |
| | 940 | 40 |
| 1:200 | Compressional Delta-T (DTCO) | |
| | 440 | 40 |

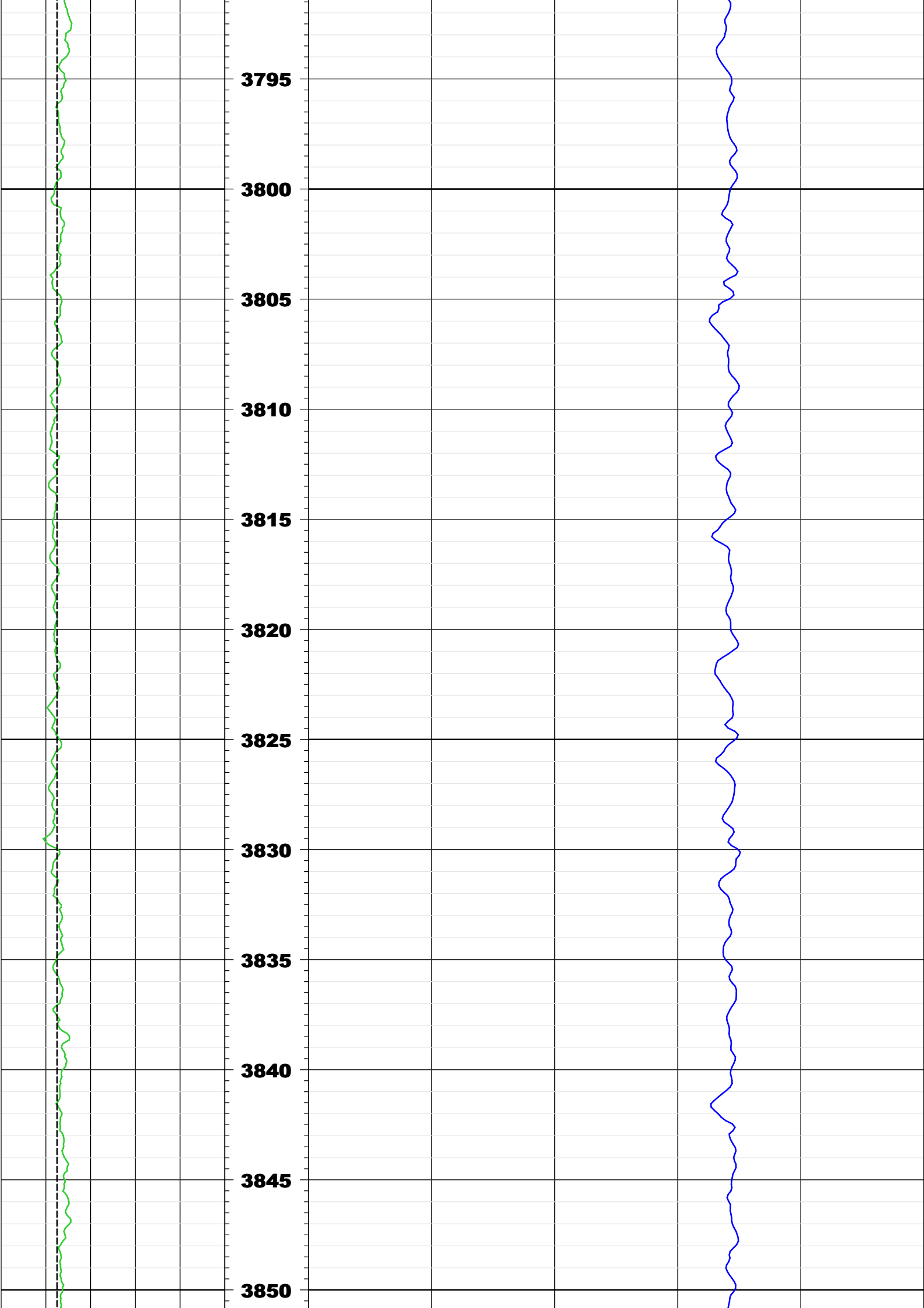


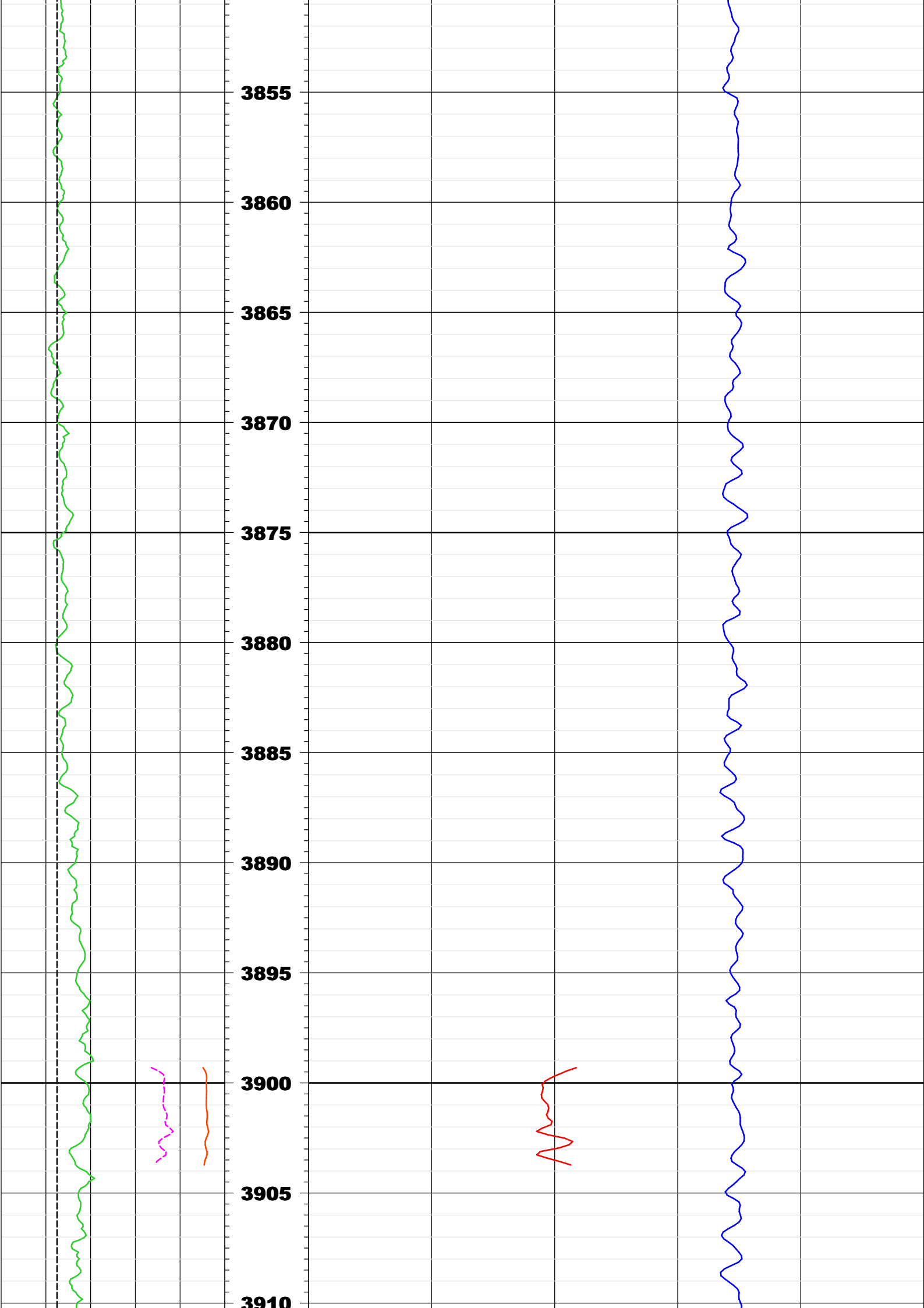


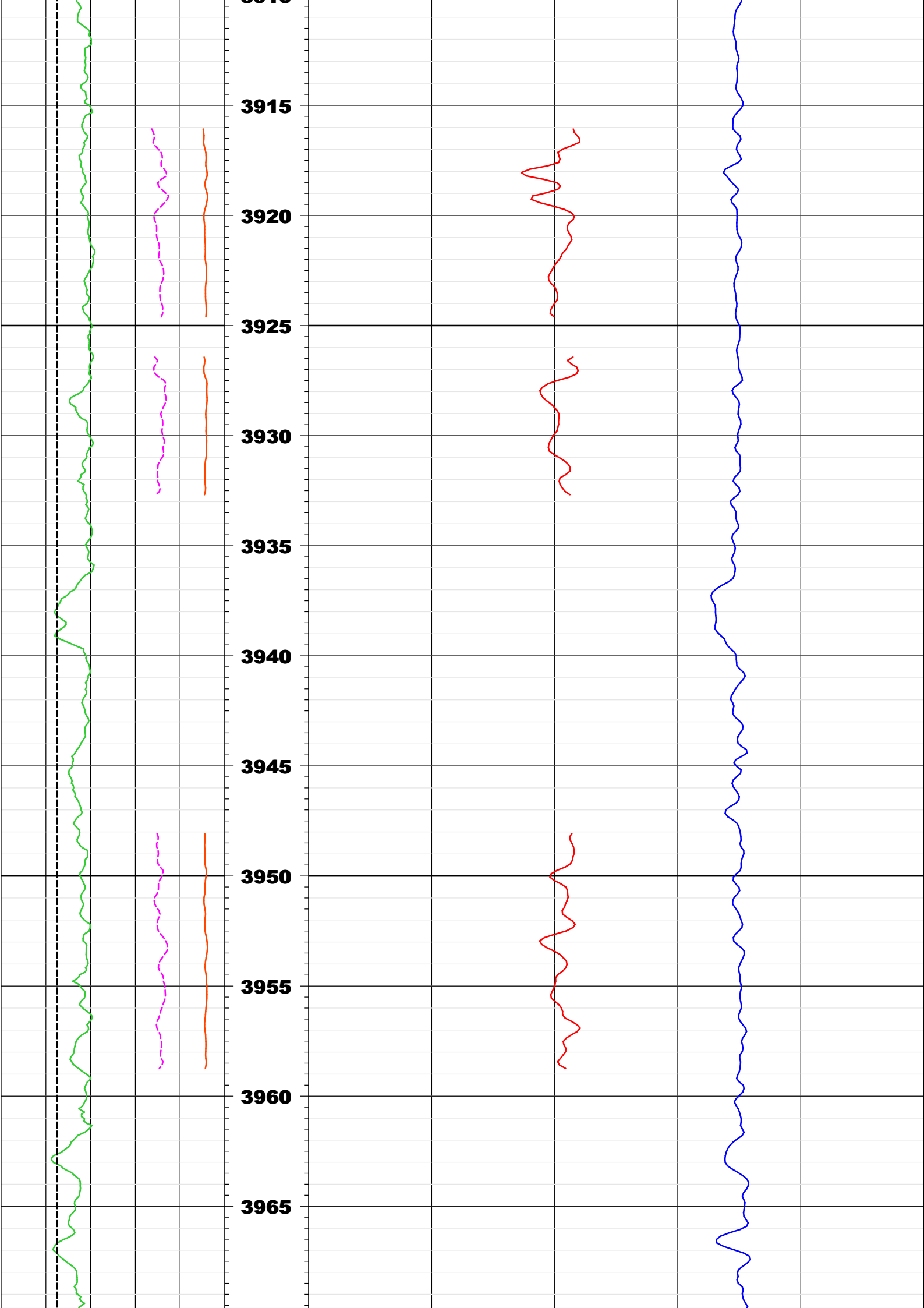


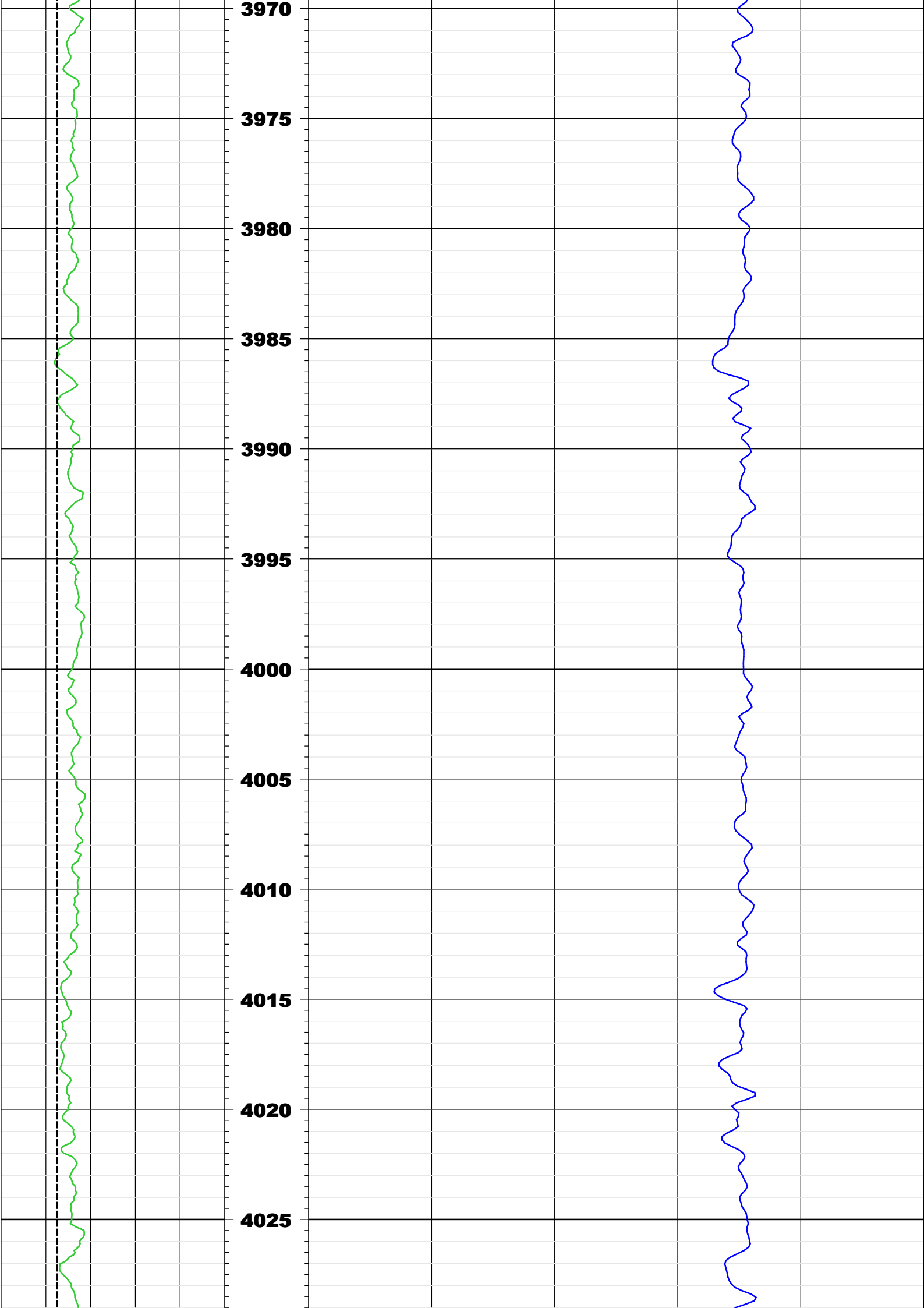


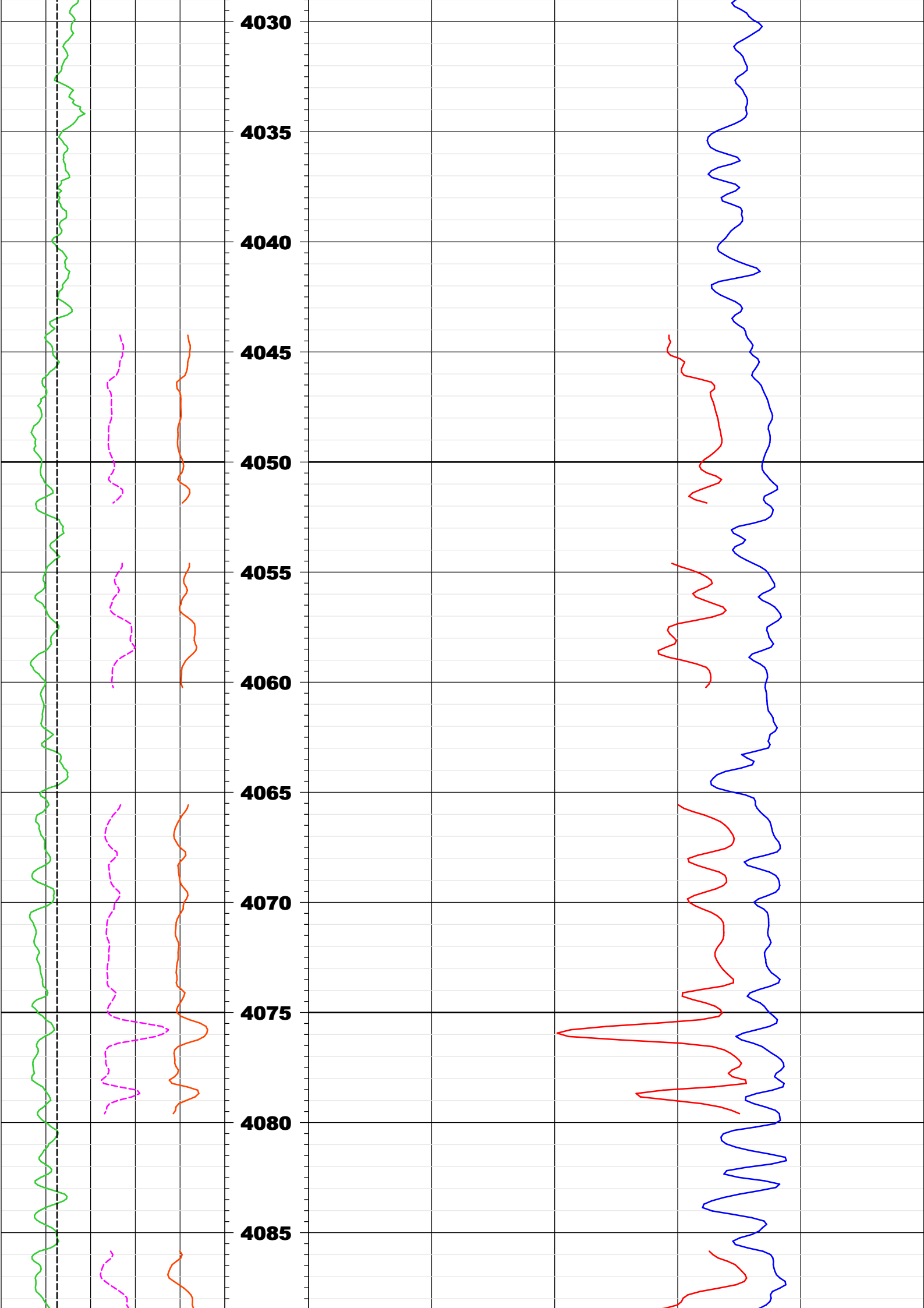


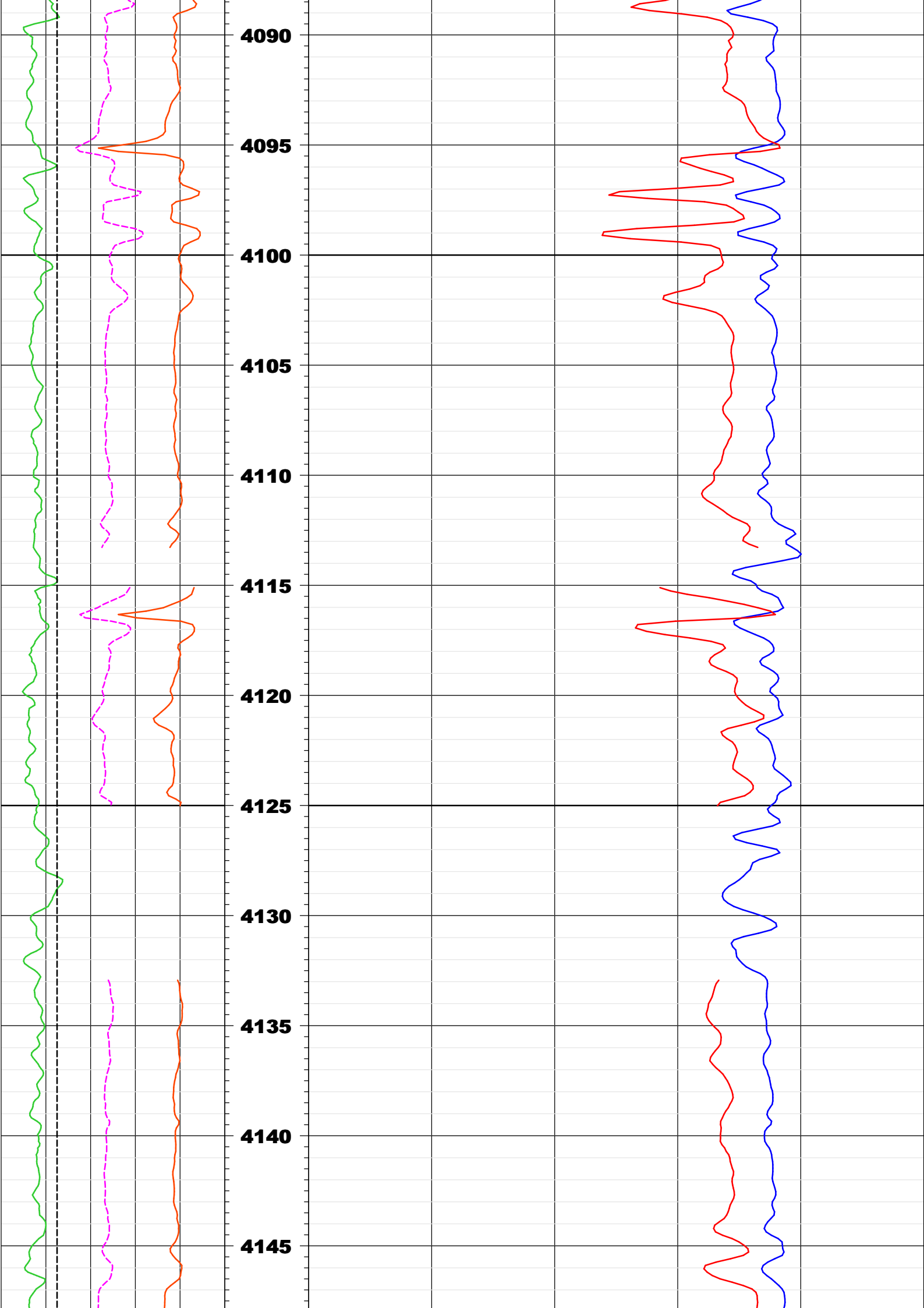


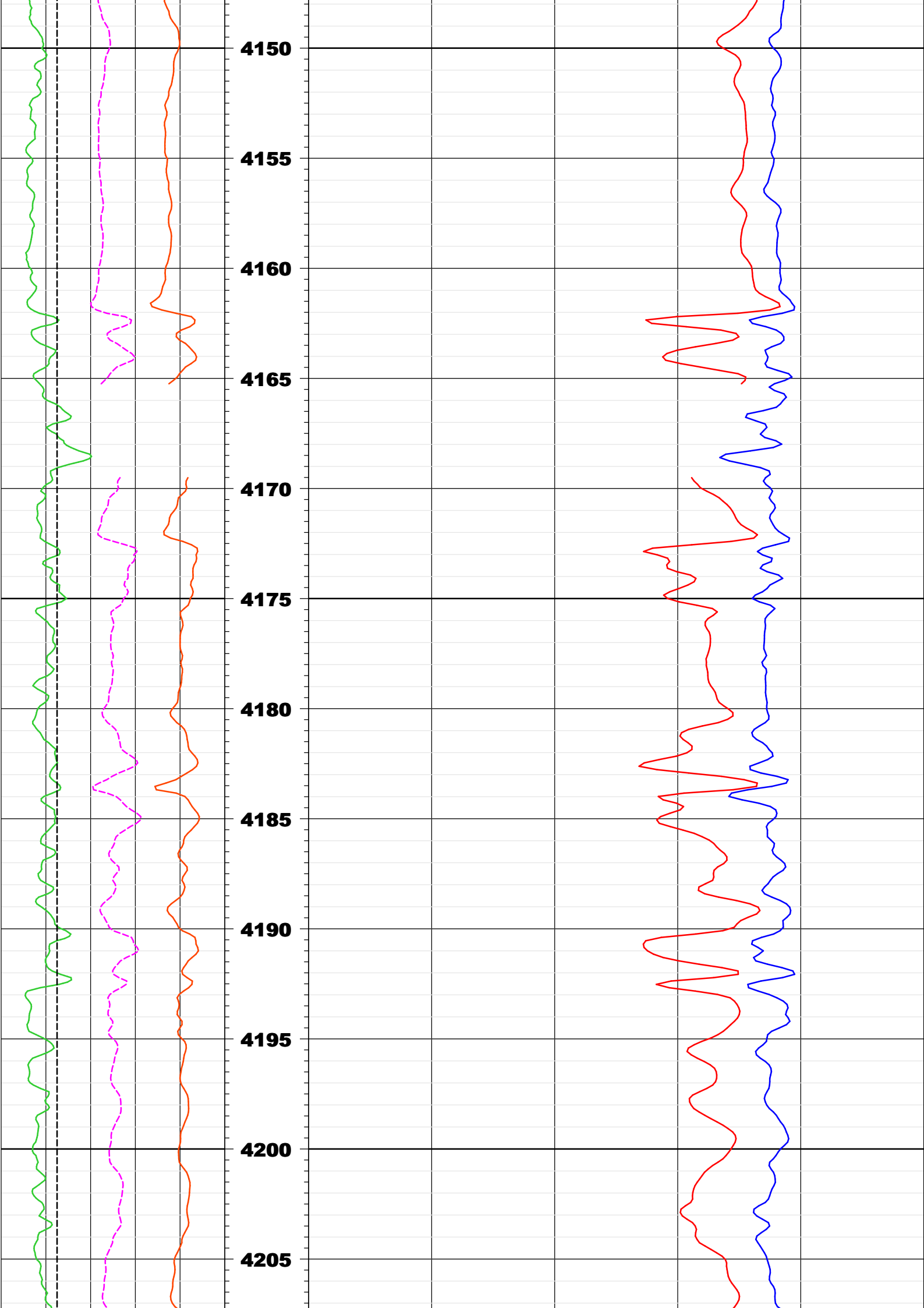


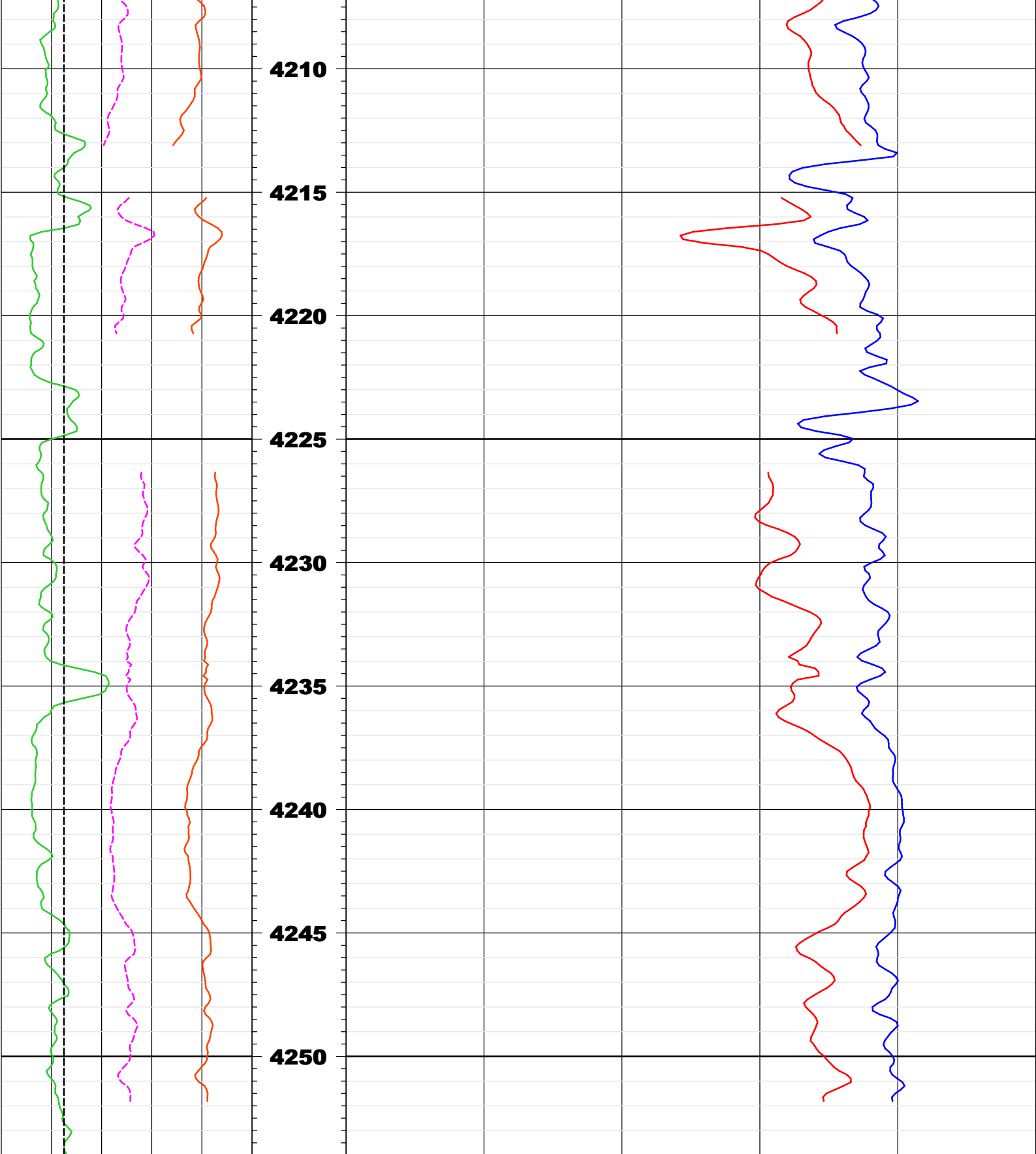












Company: IODP
 Well: U1520B
 Field: HSM-05A
 Country: New Zealand



Date Logged: 30-Dec-2017 Date Processed: 03-Jan-2018
 Well Location: Longitude: 178° 7' 56.1" E Latitude: 38° 58' 9.84" S

Elevations: DE: 11m CL: 3527.3m

Elevations:

DF: 1111

GL: -5527.511
