

U1520B

SonicScope

Monopole High Compressional Processing QC Plot

* A Mark of Schlumberger

Using the following logs: SonicScope, NeoScope

COMPANY: IODP

WELL: U1520B

FIELD: HSM-05A

COUNTRY: New Zealand

Date Logged: 30-Dec-2017

Date Processed:

03-Jan-2018

Surface Location Longitude: 178° 7' 56.1" E

Latitude: 38° 58' 9.84" S

Elevations: DF: 11 m

GL: -3527.3 m

FOLD HERE:

The well name, location and borehole reference data were furnished by the customer.

Any interpretation, research, analysis, data, results, estimates, or recommendation furnished with the services or otherwise communicated by Schlumberger to the customer at any time in connection with the services are opinions based on inferences from measurements, empirical relationships, and/or assumptions; which, inferences, empirical relationships and/or assumptions are not infallible and with respect to which professionals in the industry may differ. Accordingly, Schlumberger cannot and does not warrant the accuracy, correctness, or completeness of any such interpretation, research, analysis, data, results, estimates, or recommendation. The customer acknowledges that it is accepting the services "as is," that Schlumberger makes no representation or warranty, express or implied, of any kind or description in respect thereto, and that such services are delivered with the explicit understanding and agreement that any action taken based on the services received shall be at its own risk and responsibility, and no claim shall be made against Schlumberger as a consequence thereof.

Svc. Order #:	Techlog Vers: 2017.2	Analyst: P. Bhuyan	Process Date: 03-Jan-2018
---------------	----------------------	--------------------	---------------------------

Mud and Borehole Measurements:		
Casing Size:	BHT : 7 degC	Bit Size: 8.5 in
Casing ID:	Type Fluid in Hole: Sea Water	
Casing Weight	Mud density: 1.03 gm/cc	

Remarks:

Compressional slowness has been processed from Monopole High waveform in the interval 3690-4254m
Data might be affected due to borehole condition and mud contamination.

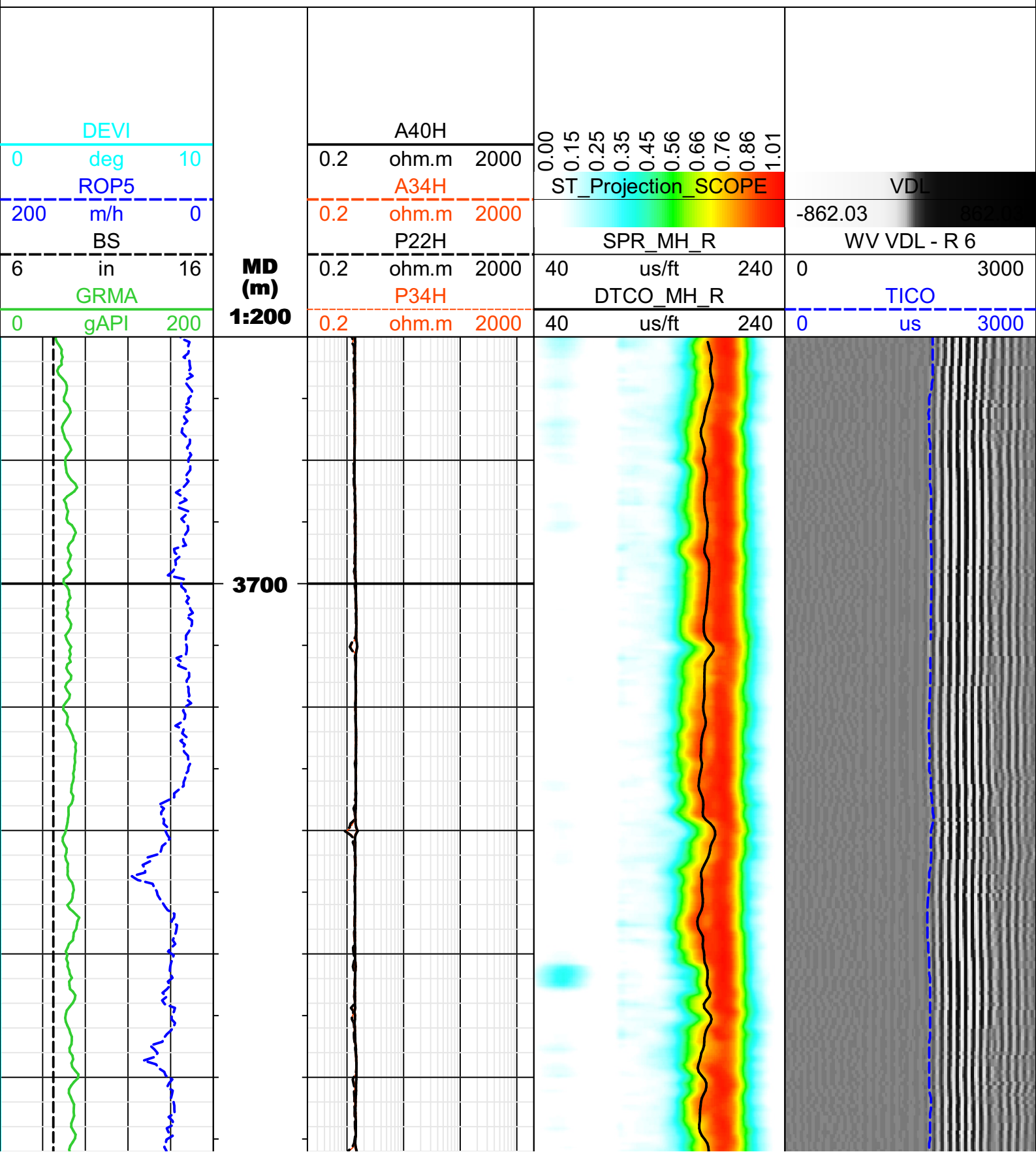
Processing parameters summary

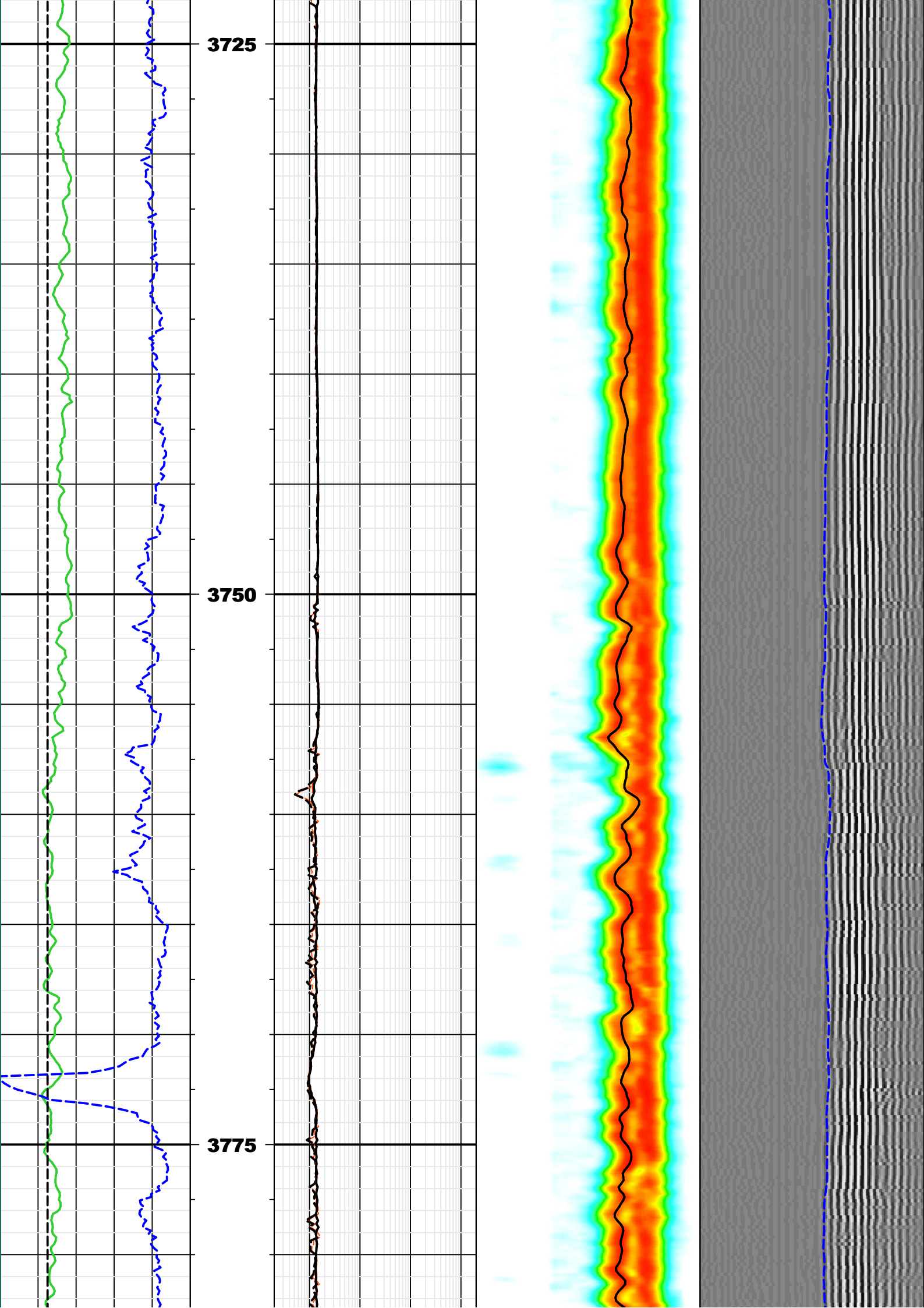
Monopole High STC

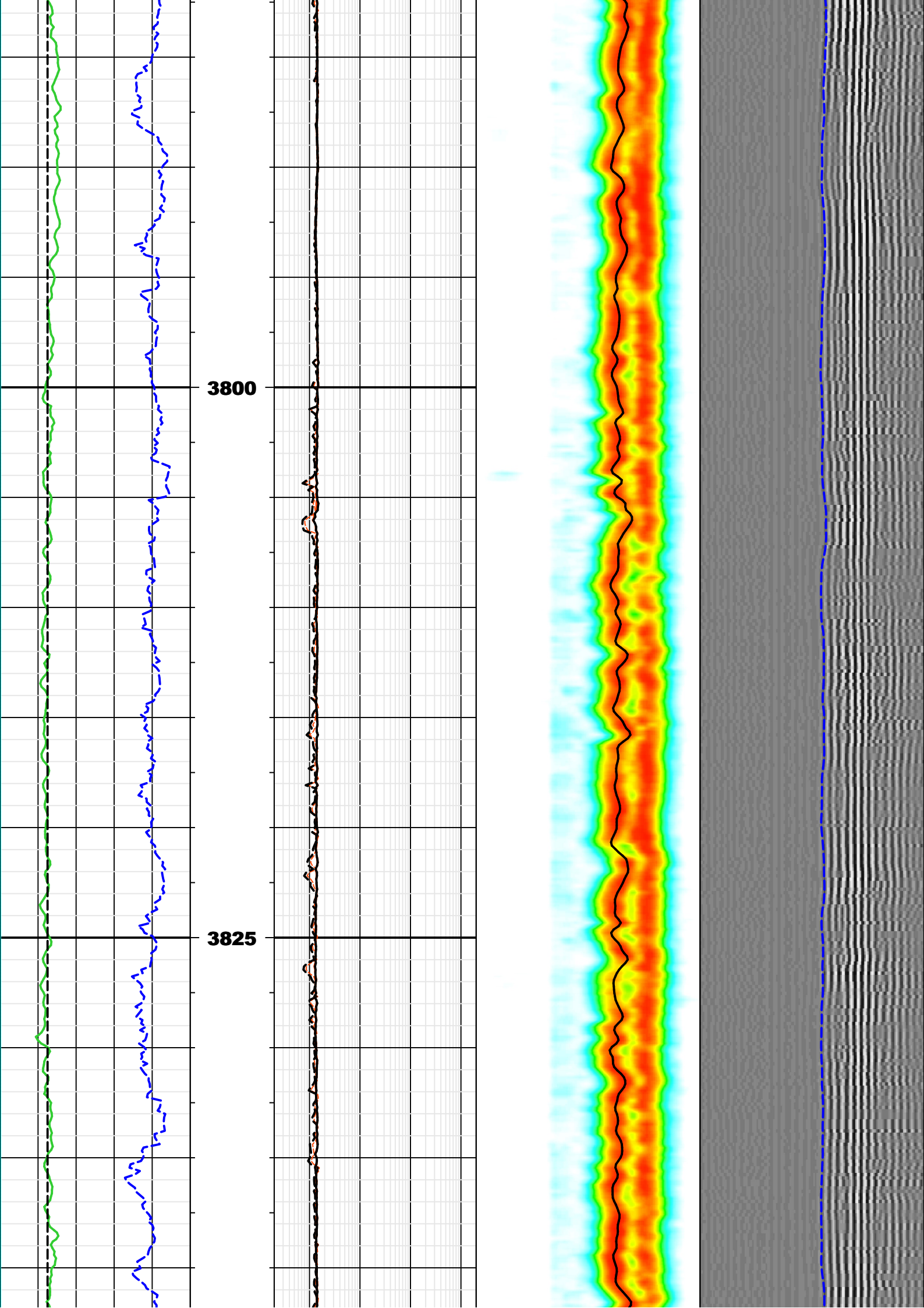
Borehole status: Open hole
 Energy threshold: 3 Pa
 Filter band high: 13000 Hz
 Formation type: Very slow
 Dispersion file mode: None
 Mud density: 8.599999 lbm/gal
 Search band offset: 294.583 us
 Slowness lower limit: 40 us/ft
 STC stacking: Yes
 Slowness width: 20 us/ft
 Min frequency: 0 Hz
 Time lower limit: 400 us
 Shear lower limit: 160 us/ft
 Time upper limit: 3700 us
 Waveform: WFA_MHT

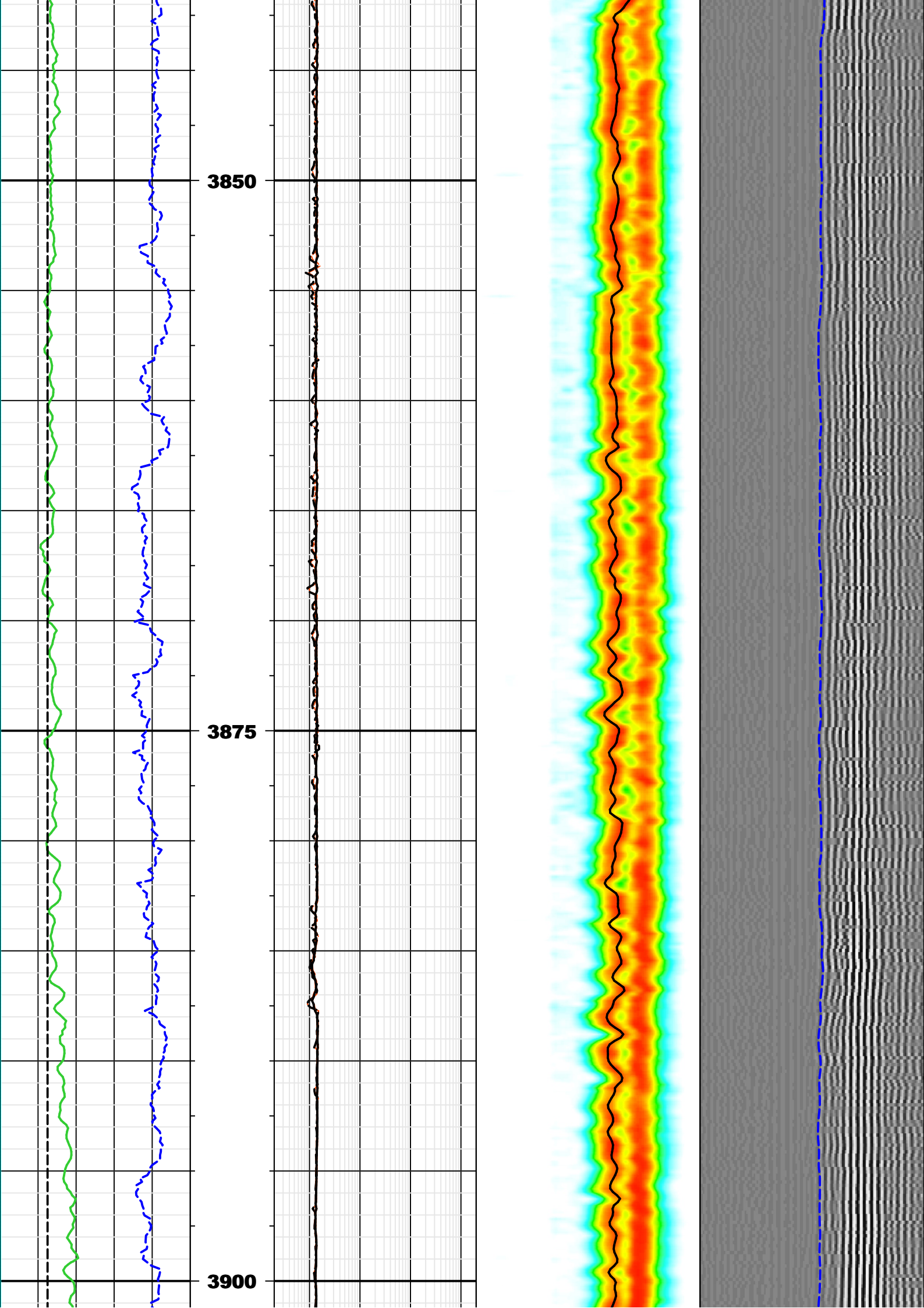
Bit size: 8.5 in
 Energy threshold option: Collar only
 Filter band low: 9000 Hz
 Average hole size: 8.5 in
 Receiver/transmitter/DDBHC mode: Receiver mode
 Mud type: WBM
 Search band width: 2135.83 us
 Stacked frames: 3
 Compute SFA: Yes
 Model order: 2
 Compressional lower limit: 90 us/ft
 Shear upper limit: 1112 us/ft
 Time width: 1600 us
 Reference receiver: 6

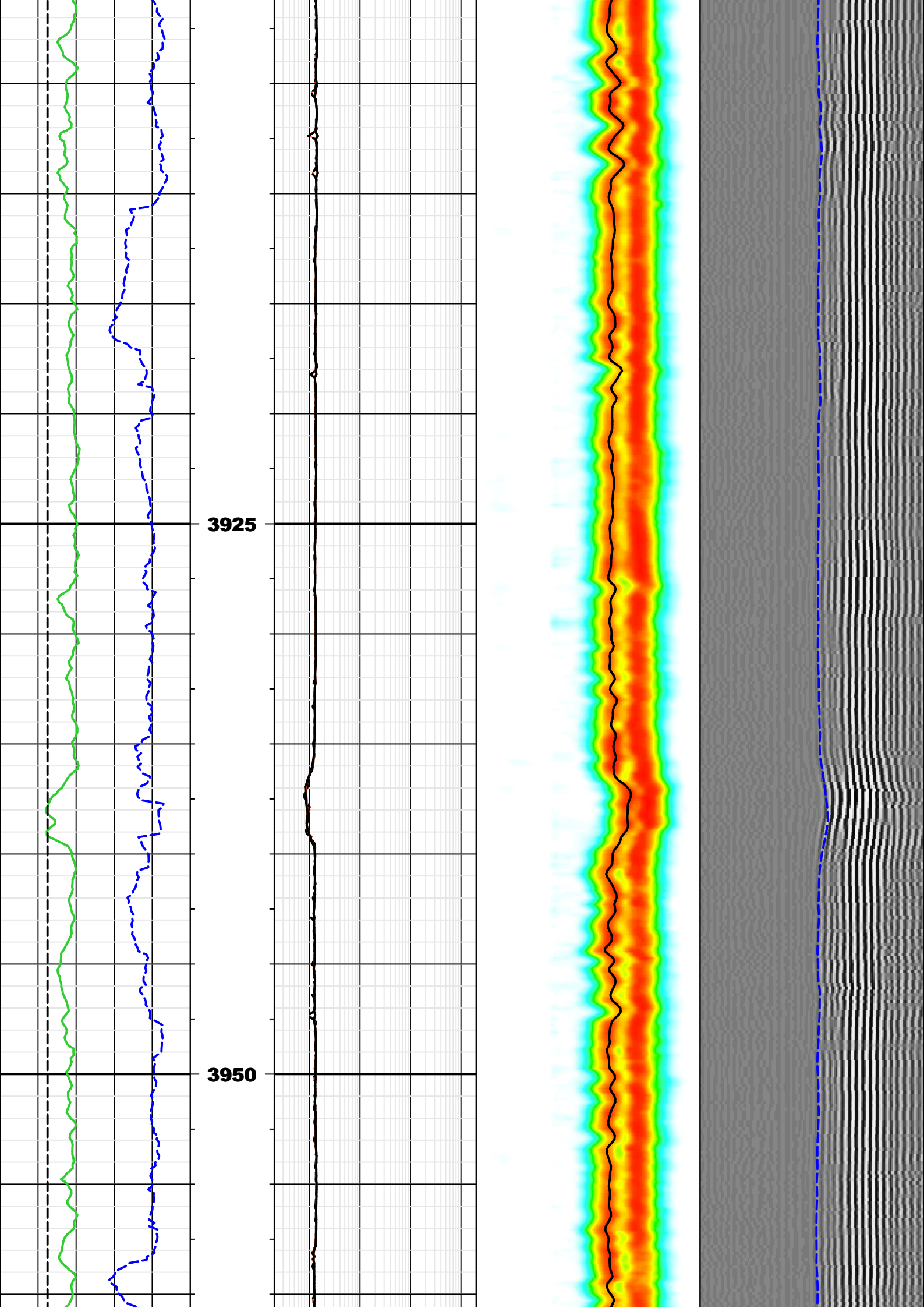
Caliper: BS in
 Filter length: 41
 Filter type: Static filter
 Leaky-P: No
 Mud slowness: 200 us/ft
 Multishot NRSA: 7
 Semblance threshold: 0.35
 Slowness step: 2 us/ft
 Slowness upper limit: 240 us/ft
 Max frequency: 12000 Hz
 Matching tolerance: 50
 Compressional upper limit: 202.5 us/ft
 Time step: 100 us
 Integration time window: 300 us
 Receiver selection: R1;R2;R3;R4;R5;R6;R7;R8;R9;R10;R11;R12

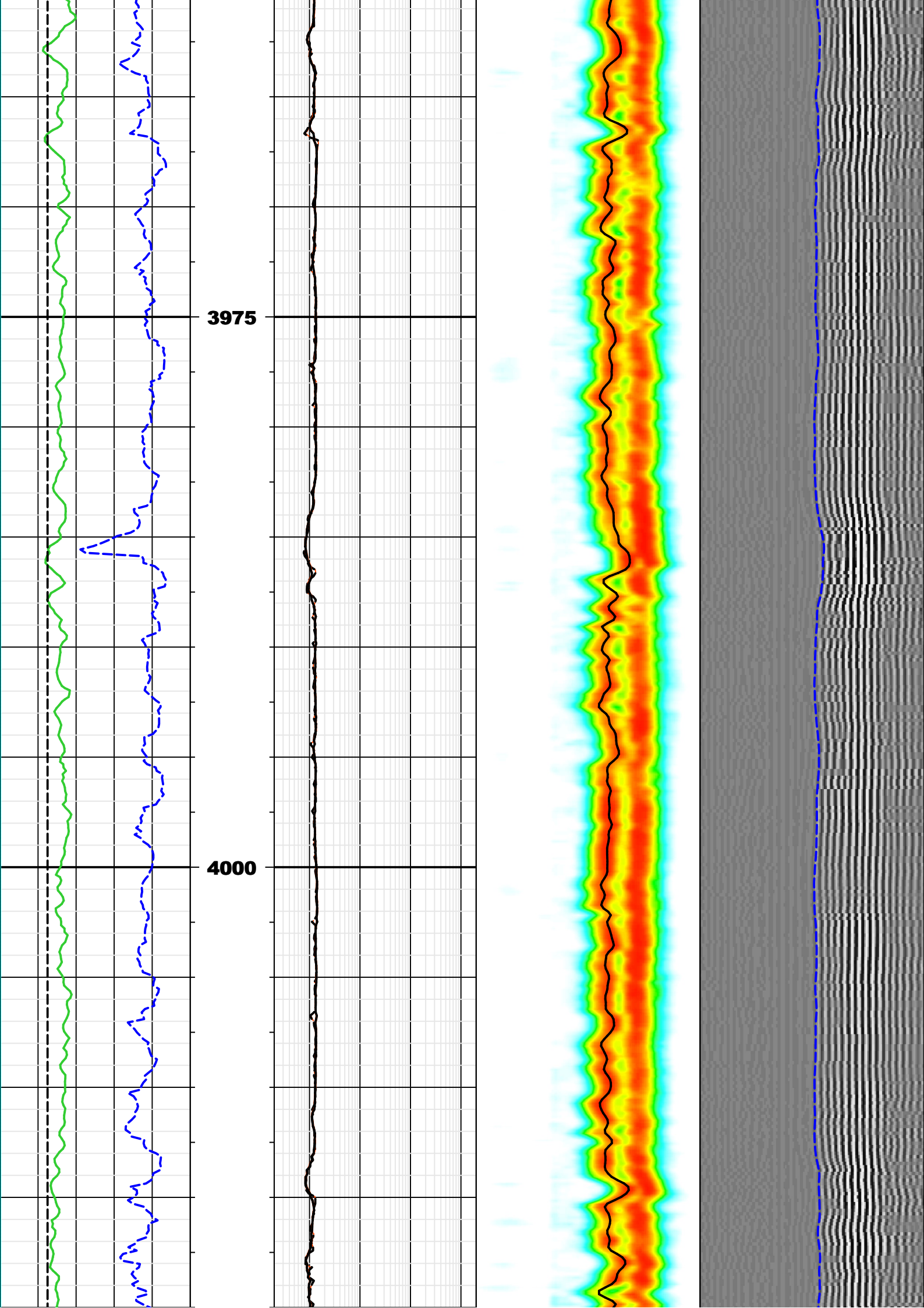


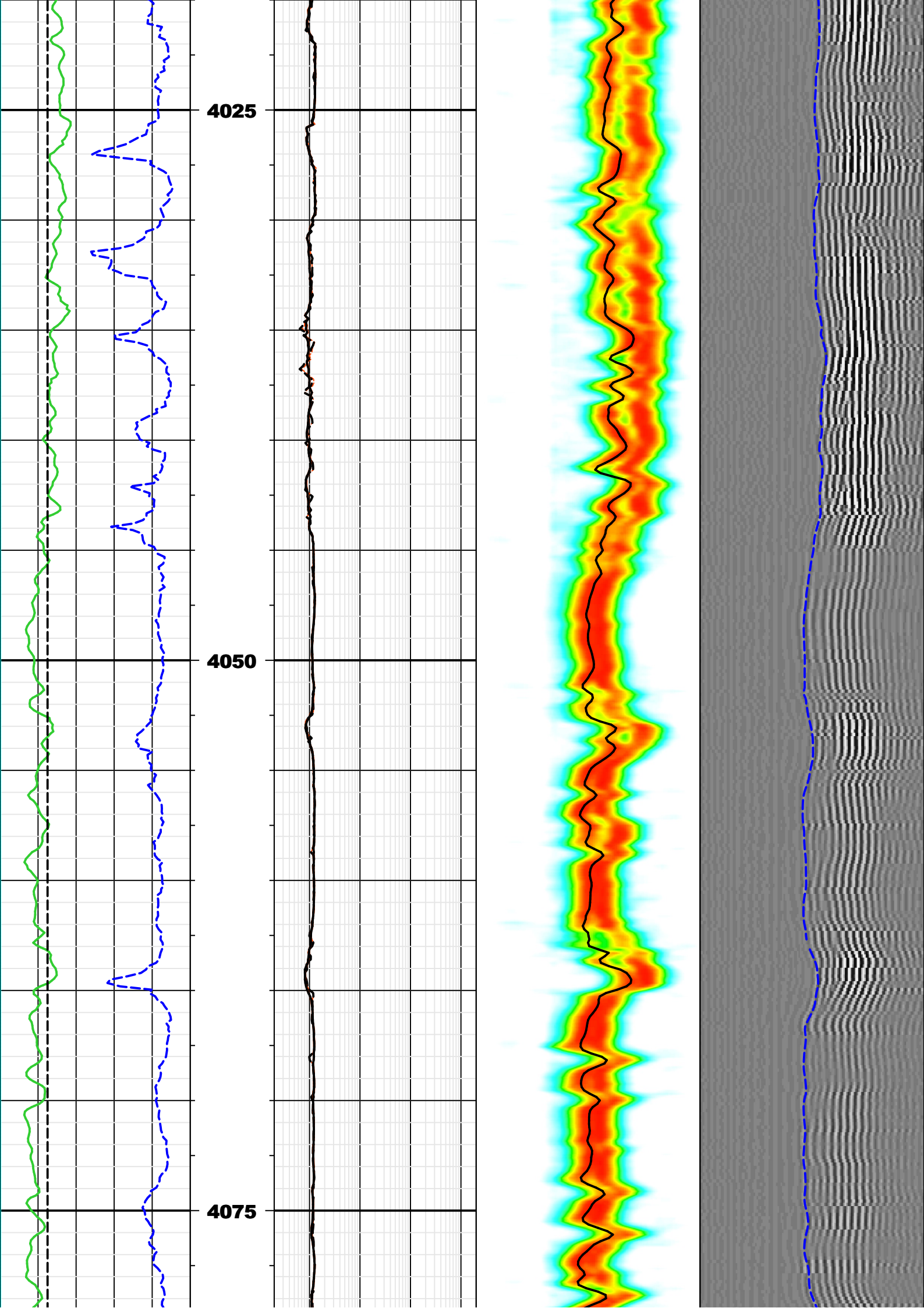


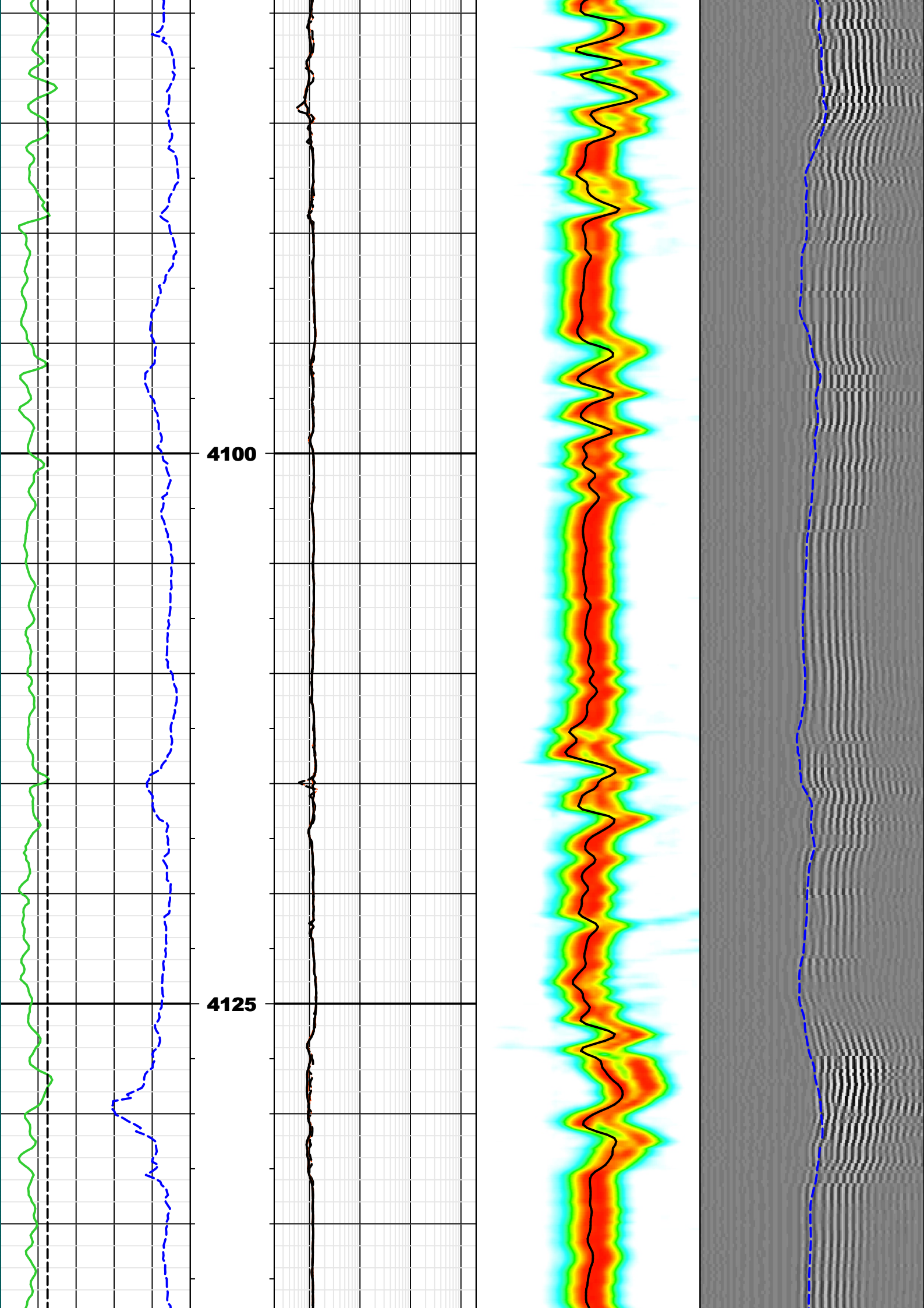


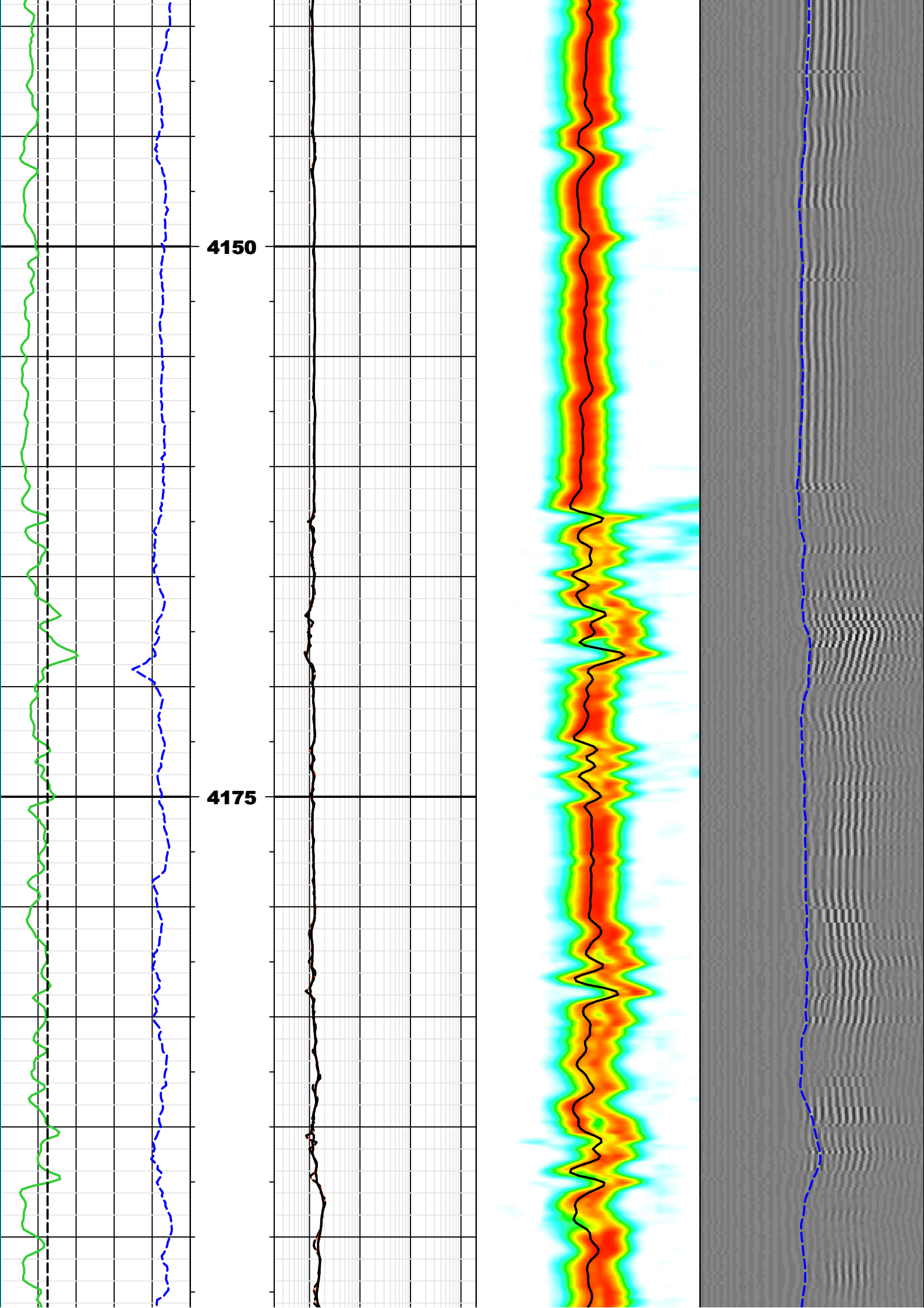


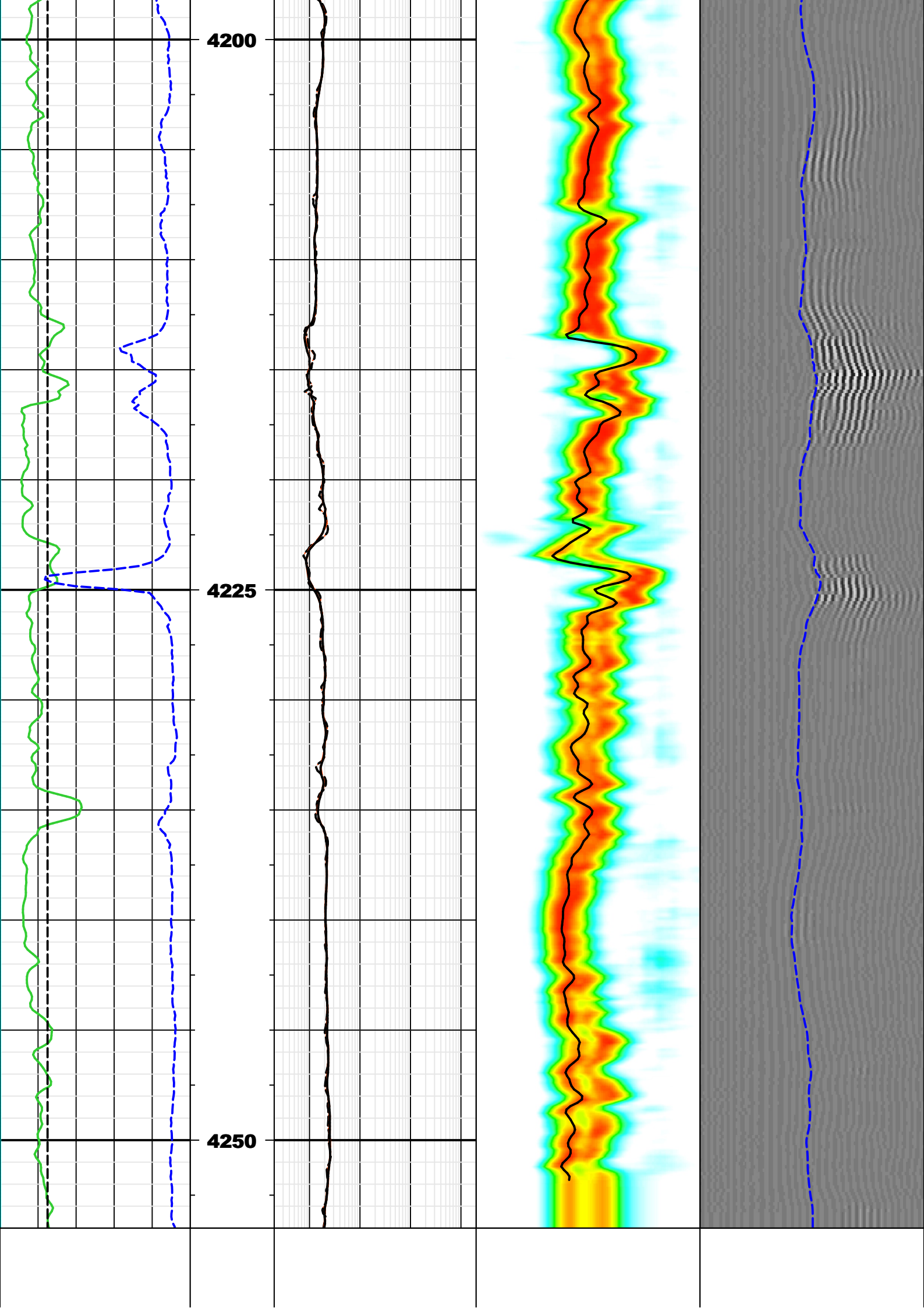












0	DEVI deg	10	MD (m) 1:200	A40H	0.2	ohm.m	2000	0.00	0.15	0.25	0.35	0.45	0.56	0.66	0.76	0.86	1.01		
200	ROP5 m/h	0		A34H	0.2	ohm.m	2000	ST_Projection_SCOPE										VDL	
6	BS in	16		P22H	0.2	ohm.m	2000	SPR_MH_R		40		us/ft		240		0		3000	
0	GRMA gAPI	200		P34H	0.2	ohm.m	2000	DTCO_MH_R		40		us/ft		240		0		3000	

Company: IODP
Well: U1520B
Field: HSM-05A
Country: New Zealand



Date Logged: 30-Dec-2017 Date Processed: 03-Jan-2018
Well Location: Longitude: 178° 7' 56.1" E Latitude: 38° 58' 9.84" S

Elevations: DF: 11m GL: -3527.3m