

DISCLAIMER
 THE USE OF AND RELIANCE UPON THIS RECORDED-DATA BY THE HEREIN NAMED COMPANY (AND ANY OF ITS AFFILIATES, PARTNERS, REPRESENTATIVES, AGENTS, CONSULTANTS AND EMPLOYEES) IS SUBJECT TO THE TERMS AND CONDITIONS AGREED UPON BETWEEN SCHLUMBERGER AND THE COMPANY, INCLUDING: (a) RESTRICTIONS ON USE OF THE RECORDED-DATA; (b) DISCLAIMERS AND WAIVERS OF WARRANTIES AND REPRESENTATIONS REGARDING COMPANY'S USE OF AND RELIANCE UPON THE RECORDED-DATA; AND (c) CUSTOMER'S FULL AND SOLE RESPONSIBILITY FOR ANY INFERENCE DRAWN OR DECISION MADE IN CONNECTION WITH THE USE OF THIS RECORDED-DATA.

OTHER SERVICES1
 OS1:
 OS2:
 OS3:
 OS4:
 OS5:

OTHER SERVICES2
 OS1:
 OS2:
 OS3:
 OS4:
 OS5:

REMARKS: RUN NUMBER 1
 Hole drilled with RCB BHA at 9 7/8" BS

 Drill pipe set at 4680.4 mbrf.

 Depth recorded from drill floor; logs presented as-logged without depth corrections or shifts, as per client instructions.
 All logs presented in wireline measured depth below rig floor (MDBRF).

 Bridged at 4819 mbrf and 4825 mbrf then POH per client request to lower drill pipe past obstruction to 400m below sea floor.

 Downlog only log obtained prior to POH.

REMARKS: RUN NUMBER 2

RUN 1		
SERVICE ORDER #:		
PROGRAM VERSION:	19C0-187	
FLUID LEVEL:		
LOGGED INTERVAL	START	STOP

RUN 2		
SERVICE ORDER #:		
PROGRAM VERSION:		
FLUID LEVEL:		
LOGGED INTERVAL	START	STOP

EQUIPMENT DESCRIPTION



RUN 1

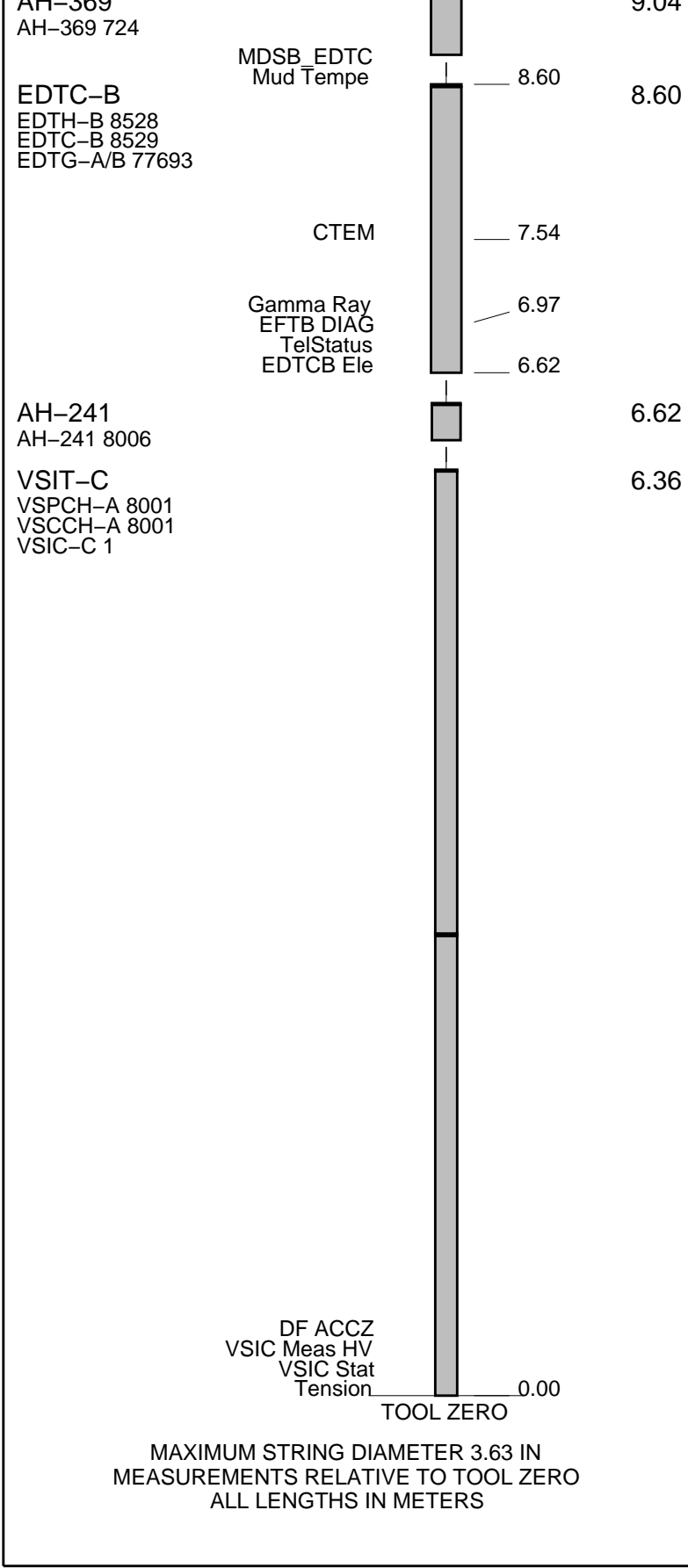
SURFACE EQUIPMENT

WSAM 808
 WITM (EDTS)-A 1

RUN 2

DOWNHOLE EQUIPMENT

LEH-QT LEH-QT 301		9.93
AH 260		0.04



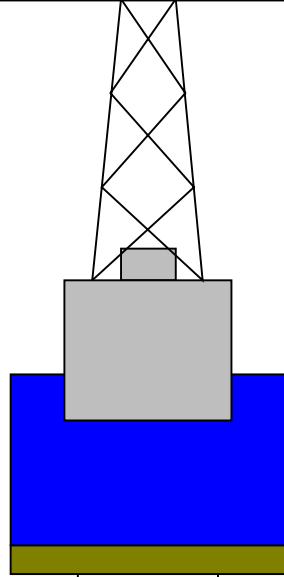
Production String	(in)	(M)	Well Schematic	(M)	(in)	Casing String
	OD	ID		MD	MD	

Kelly Bushing Elevation
Derrick Floor Elevation

Mean Sea Level

0
0

11



4.1



2571.5 4.1

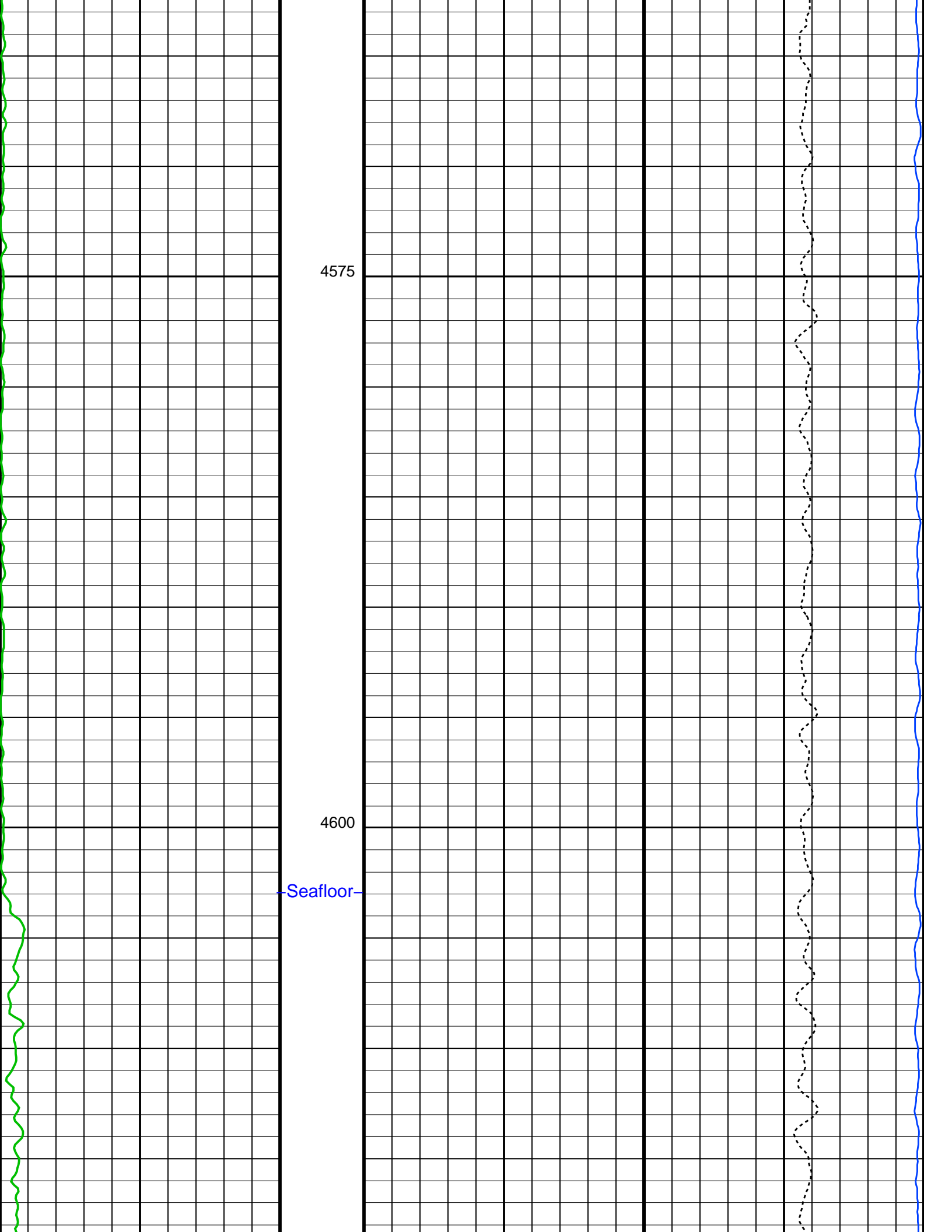
4680.4 9.875

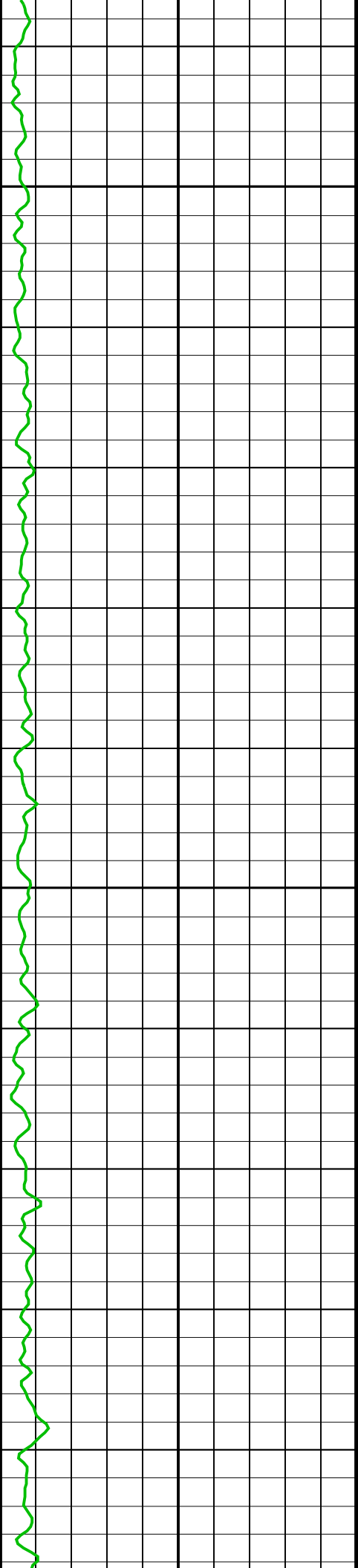
5599.7

Sea Floor

Open Hole

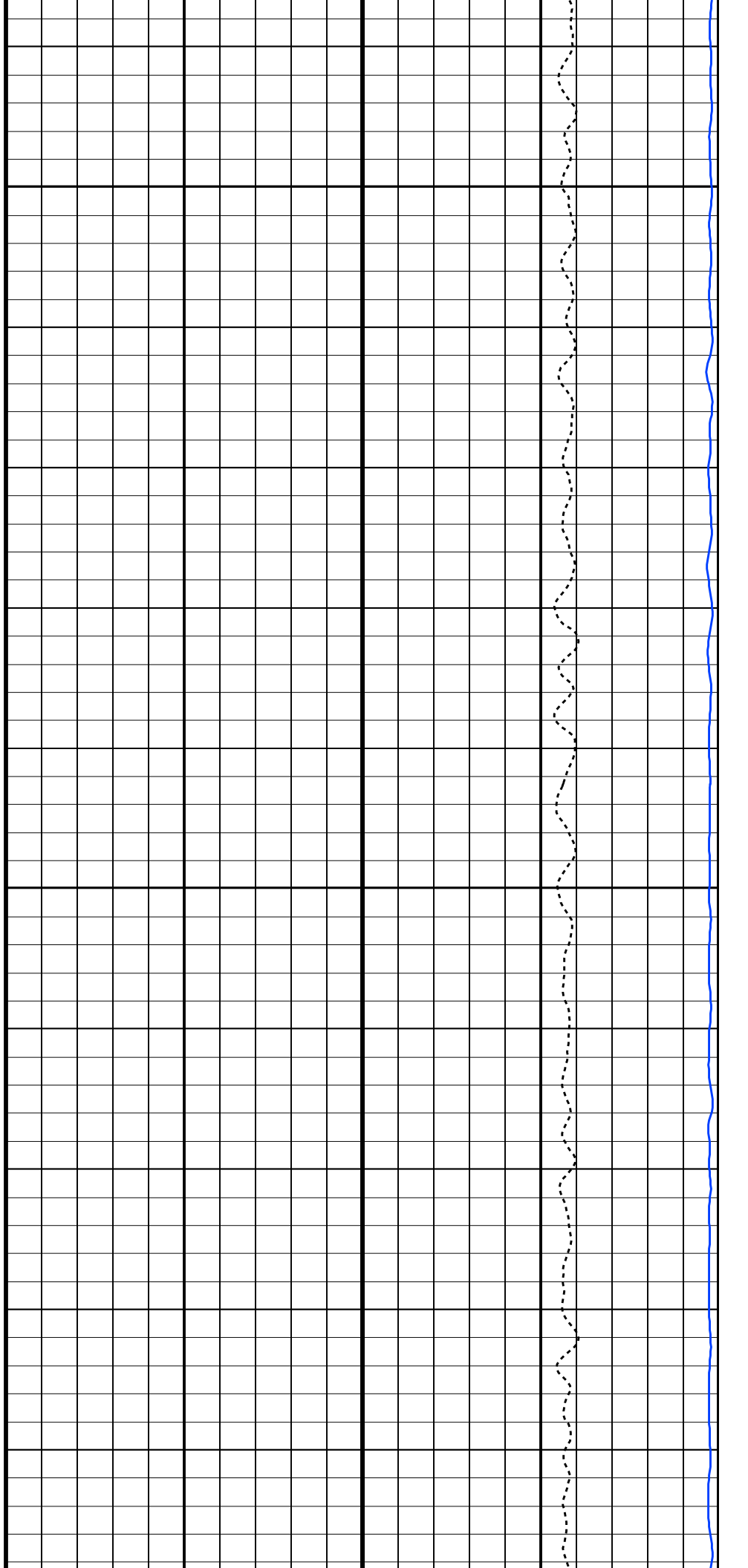
Total Depth

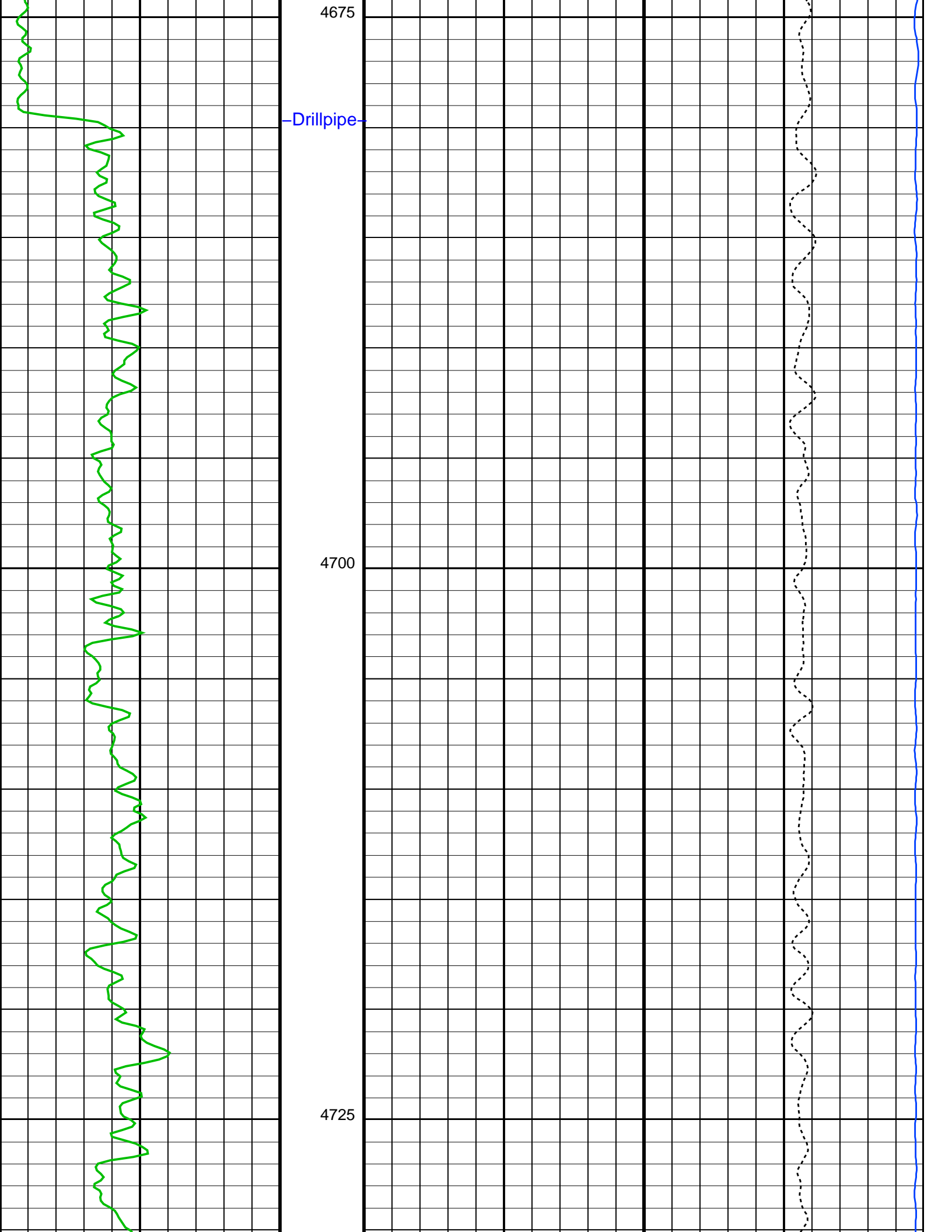




4625

4650



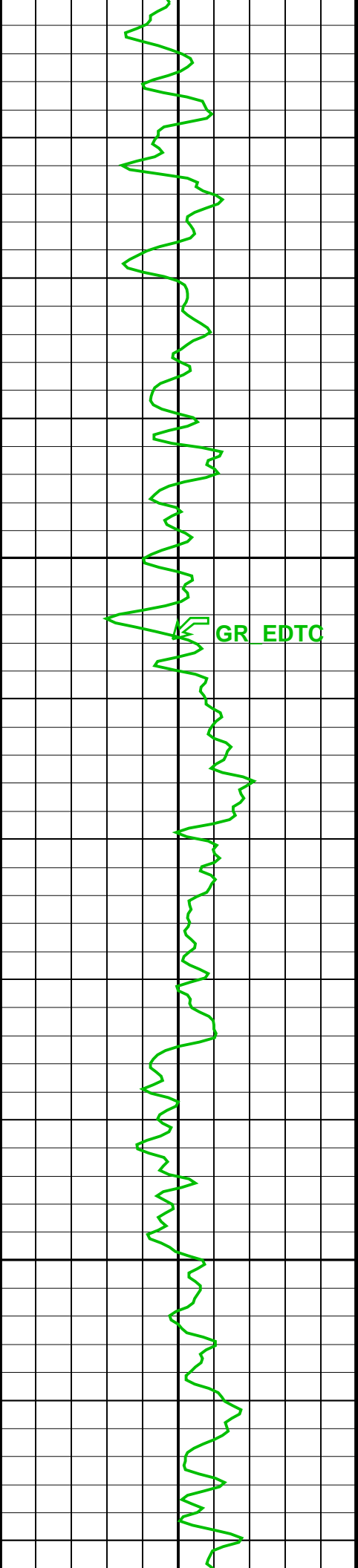


4675

Drillpipe

4700

4725

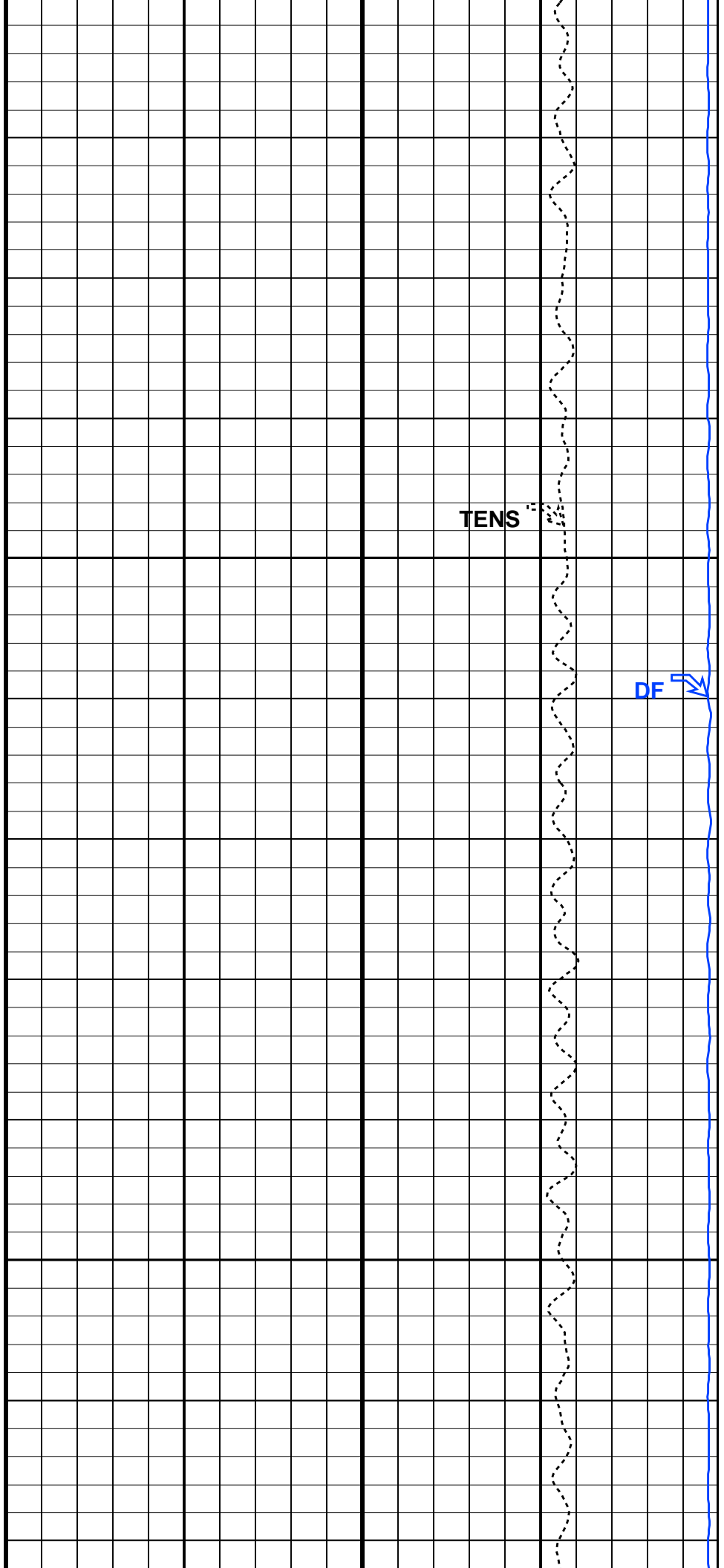


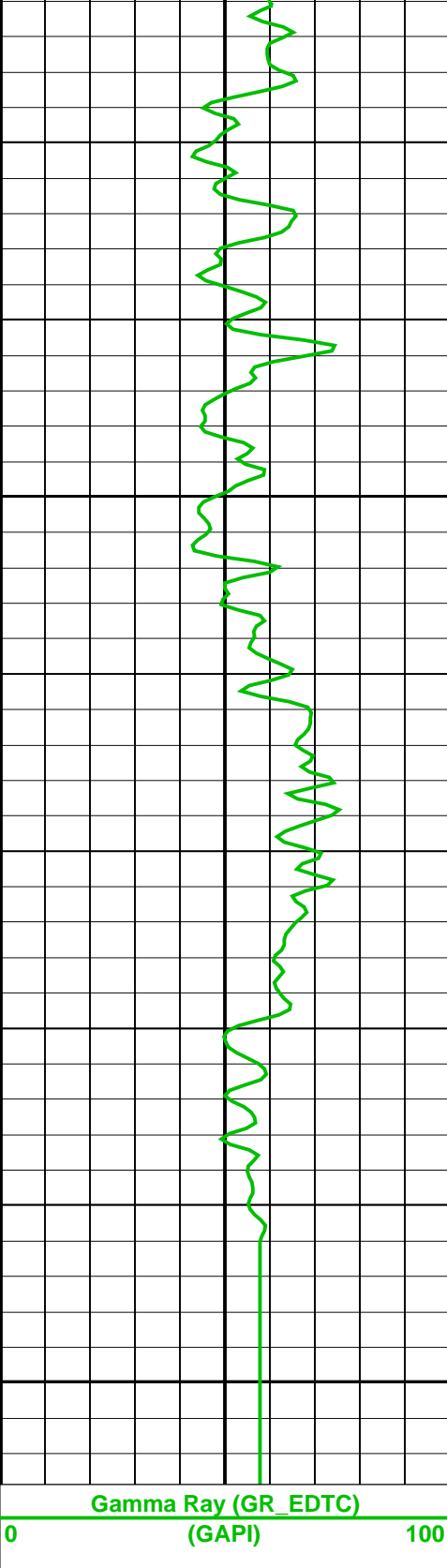
4750

4775

TENS

DF

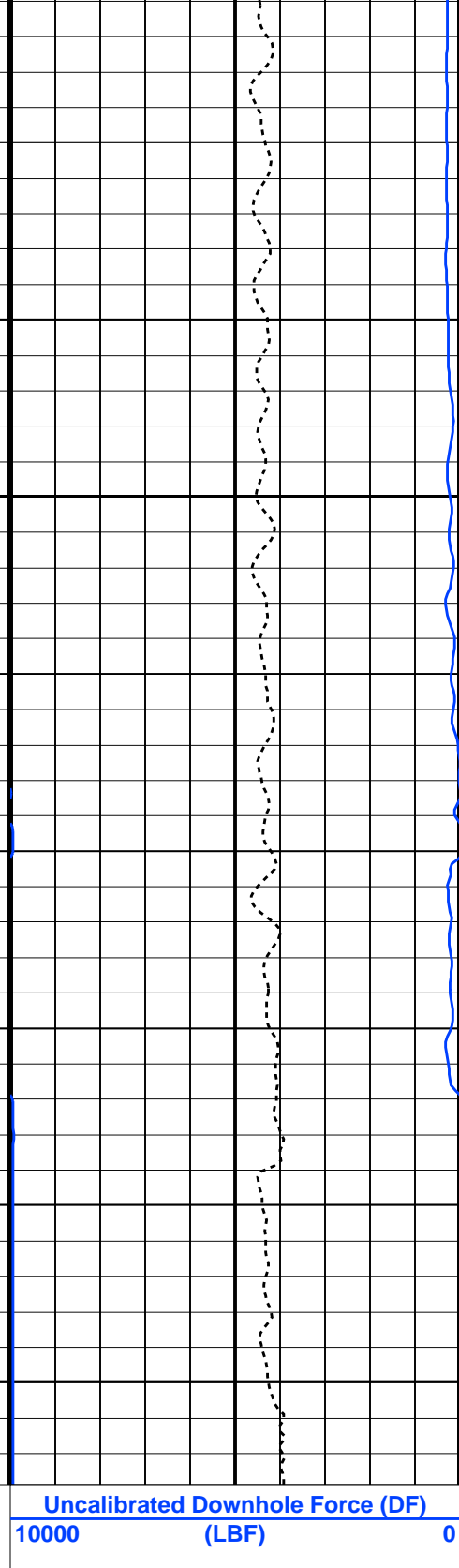




4800

4825

Downlog



Parameters

DLIS Name	Description	Value
DO	System and Miscellaneous	
PP	Depth Offset for Playback	0.0 M
	Playback Processing	RECOMPUTE

Format: CORRELATION

Vertical Scale: 1:200

Graphics File Created: 28-Mar-2022 15:53

Input DLIS Files

DEFAULT Flip_VSIT_018LUP PRODUCER 28-Mar-2022 15:47 4827.9 M 4554.6 M

Output DLIS Files

DEFAULT VSIT_019PUP FN:24 PRODUCER 28-Mar-2022 15:53

Calibration and Check Summary

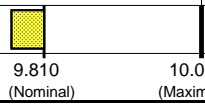
Measurement	Nominal	Master	Before	After	Change	Limit	Units
Enhanced DTS Cartridge Wellsite Calibration – EDTC Accelerometer Calibration							
Before: 25-Mar-2022 3:03							
EDTC Z-Axis Acceleration	9.810	N/A	9.763	N/A	N/A	N/A	M/S2
Enhanced DTS Cartridge Wellsite Calibration – Detector Calibration							
Before: Calibration out of date 13-Feb-2022 22:35 After: Calibration out of date 13-Feb-2022 22:44							
Gamma Ray (Jig – Bkg)	163.4	N/A	163.4	165.6	2.160	14.86	GAPI
Gamma Ray (Calibrated)	164.0	N/A	164.0	166.2	2.168	15.00	GAPI

Enhanced DTS Cartridge / Equipment Identification

Primary Equipment:		
EDTC Gamma Ray Detector	EDTG – A/B	77693
Enhanced DTS Cartridge	EDTC – B	8529
Auxiliary Equipment:		
EDTC Housing	EDTH – B	8528

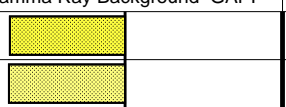
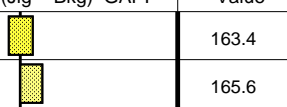
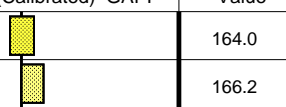
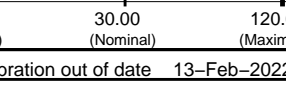
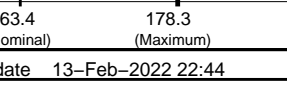
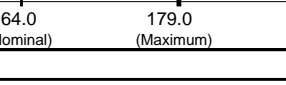
Enhanced DTS Cartridge Wellsite Calibration

EDTC Accelerometer Calibration

Phase	EDTC Z-Axis Acceleration M/S2	Value
Before		9.763
	9.610 (Minimum) 9.810 (Nominal) 10.01 (Maximum)	
Before: 25-Mar-2022 3:03		

Enhanced DTS Cartridge Wellsite Calibration

Detector Calibration

Phase	Gamma Ray Background GAPI	Value	Phase	Gamma Ray (Jig – Bkg) GAPI	Value	Phase	Gamma Ray (Calibrated) GAPI	Value
Before		8.029	Before		163.4	Before		164.0
After		7.842	After		165.6	After		166.2
	0 (Minimum) 30.00 (Nominal) 120.0 (Maximum)			148.6 (Minimum) 163.4 (Nominal) 178.3 (Maximum)			149.0 (Minimum) 164.0 (Nominal) 179.0 (Maximum)	
Before: Calibration out of date 13-Feb-2022 22:35			After: Calibration out of date 13-Feb-2022 22:44					

Well: Expedition 392, Site 01381 B
Field: Agulhas Plateau Cretaceous Climate
Rig: JOIDES Resolution
Ocean: Southern

Gamma Ray (EDTC)