

# ECS Spectrolith Processing

Elbert-01

COMPANY: BP Exploration (Alaska), Inc.

Mt. Elbert - 01

-D: Milne Pt

Alaska

JNTRY: US

Processed: 15-MAR-2007 Date Logged: 14-Feb

14-Fe

Number: \_\_\_\_\_

Processed at: Anchorage, AK

well \_\_\_\_\_

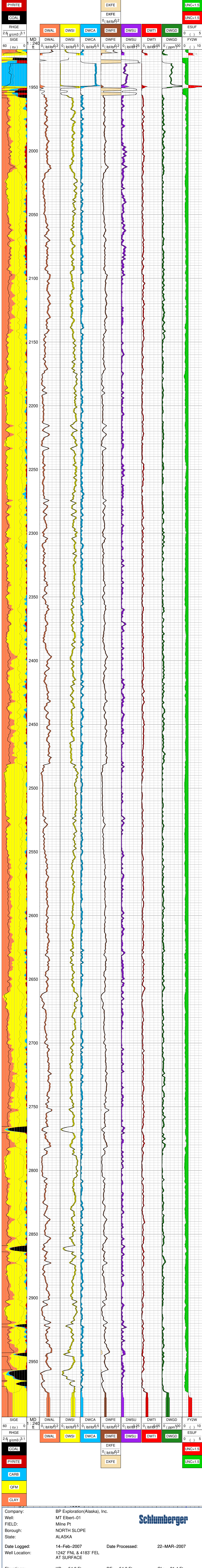
well  
.....  
ation  
tee

Location: 1242' FNL & 4183' FEL

Longitude:

ations:	KB:	54.5 Ft	DF:	54.8 Ft	GL:	21.4 Ft
						ERE

Frequency of Use	18-24 (Blue)	25-34 (Orange)	35-44 (Green)
Never	1	0	0
Rarely	2	0	0
Sometimes	3	1	0
Often	4	2	1
Always	5	3	2



Elevations: KB: 54.8 Ft  
API Number: 50-029-23302-00

1638614