

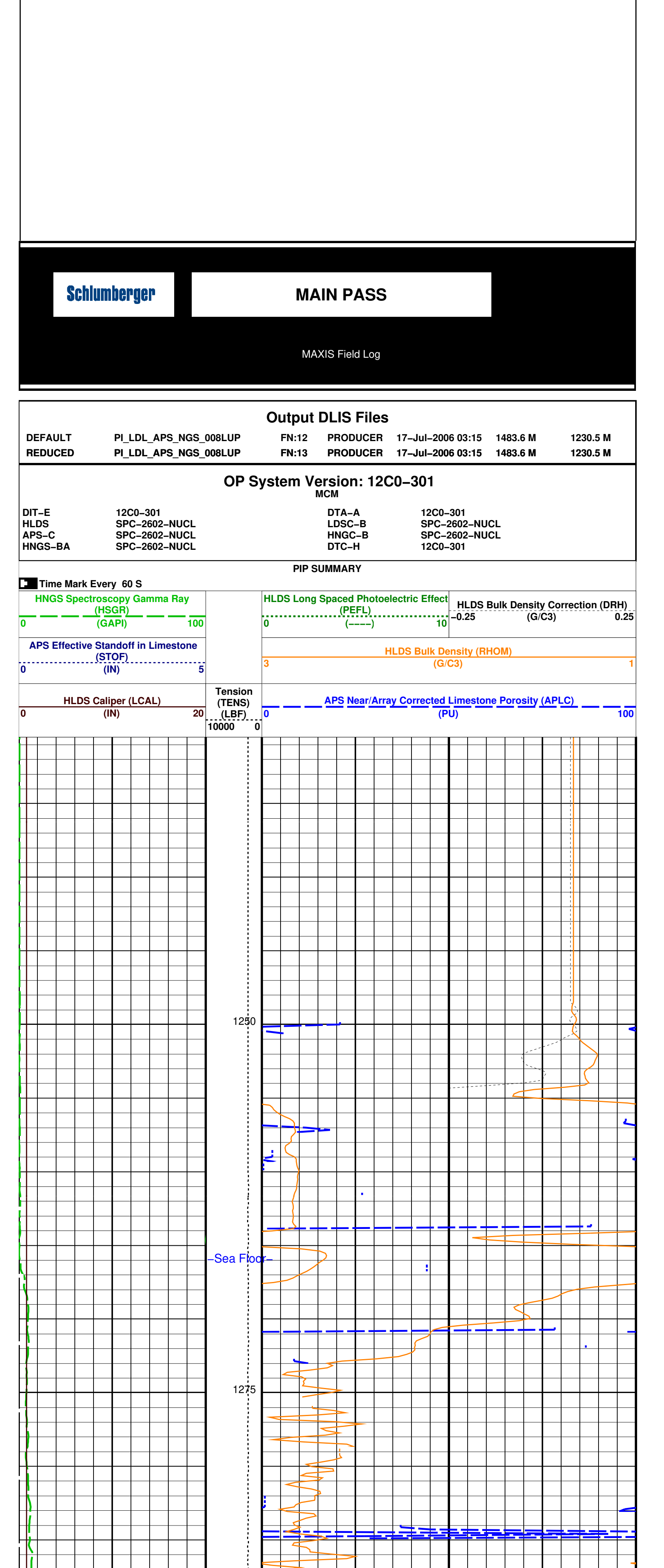
RIG	Joides Resolution
Location	NGHP-01-16A
Well	NGHP-01-16A
Company	Lamont Doherty
LOGGING DATE	17-Jul-2006 03:15
LOGGING TIME	11:30 m
LOGGING DEPTH	11.0 m
LOGGING INTERVAL	300.0 m
LOGGING RATE	0.036 m/min
LOGGING STATUS	Normal
LOGGING TOOL	Hostile Litho-Density Tool
LOGGING TOOL NUMBER	1130
LOGGING TOOL SERIAL	8262
LOGGING TOOL MODEL	720
LOGGING TOOL WEIGHT	1130.0 kg
LOGGING TOOL HEIGHT	3.0 m
LOGGING TOOL LENGTH	3.0 m
LOGGING TOOL DIAMETER	113.0 mm
LOGGING TOOL WEIGHT PER METRE	376.7 kg/m
LOGGING TOOL LENGTH PER METRE	1130.0 mm/m
LOGGING TOOL WEIGHT PER CENTIMETRE	3.767 kg/cm
LOGGING TOOL LENGTH PER CENTIMETRE	1130.0 mm/cm
LOGGING TOOL WEIGHT PER FOOT	3.415 kg/ft
LOGGING TOOL LENGTH PER FOOT	1130.0 mm/ft
LOGGING TOOL WEIGHT PER METRE PER CENTIMETRE	3.767 kg/cm ²
LOGGING TOOL LENGTH PER METRE PER CENTIMETRE	1130.0 mm/cm ²
LOGGING TOOL WEIGHT PER CENTIMETRE PER METRE	3.767 kg/cm ³
LOGGING TOOL LENGTH PER CENTIMETRE PER METRE	1130.0 mm/cm ³
LOGGING TOOL WEIGHT PER METRE PER FOOT	3.767 kg/cm ³
LOGGING TOOL LENGTH PER METRE PER FOOT	1130.0 mm/cm ³
LOGGING TOOL WEIGHT PER CENTIMETRE PER FOOT	3.767 kg/cm ³
LOGGING TOOL LENGTH PER CENTIMETRE PER FOOT	1130.0 mm/cm ³

OTHER SERVICES1	OS1: DITE	OTHER SERVICES2	OS1: LDCS-B
OS2: HNGS	OS2: HNGS	OS2: LDCS-B	OS2: LDCS-B
OS3: HNGS	OS3: HNGS	OS3: LDCS-B	OS3: LDCS-B
OS4: HNGS	OS4: HNGS	OS4: LDCS-B	OS4: LDCS-B
OS5: HNGS	OS5: HNGS	OS5: LDCS-B	OS5: LDCS-B
REMARKS: RUN NUMBER 1	All parameters and presentations as per client request	REMARKS: RUN NUMBER 2	All parameters and presentations as per client request
Tool run as per tool sketch below			
Drill Pipe was rised 13 meters due to bad hole conditions			
Caliper closed to avoid tool damage and tool dragging			

SERVICE ORDER #:	RUN 1	SERVICE ORDER #:	RUN 2
PROGRAM VERSION:	FLUID LEVEL	PROGRAM VERSION:	FLUID LEVEL
LOGGED INTERVAL:	START	LOGGED INTERVAL:	START
	STOP		STOP

EQUIPMENT DESCRIPTION

SURFACE EQUIPMENT	RUN 1	RUN 2
SFT-281 6250		
SFT-178 8250		
WDH-U 135		
WDH-U 135-A		



MAIN PASS

MAXIS Field Log

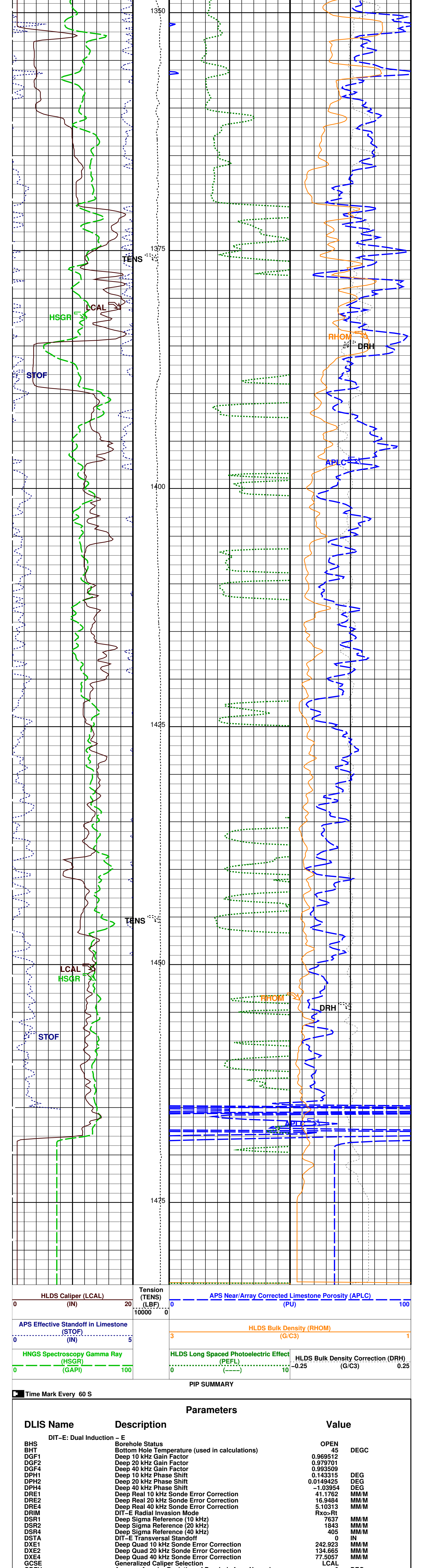
DEFAULT	PI_LDL_APS_NGS_008LUP	FN:12	PRODUCER	17-Jul-2006 03:15	1483.5 M	1230.5 M
REDUCED	PI_LDL_APS_NGS_008LUP	FR:13	PRODUCER	17-Jul-2006 03:15	1483.5 M	1230.5 M

OP System Version: 12C0-301

DIT-E	12C0-301	DTA-A	12C0-301
HLDS	SPC-2602-NUCL	LDCS-B	SPC-2602-NUCL
APS-C	SPC-2602-NUCL	HNGC-B	SPC-2602-NUCL
HNGS-BA	SPC-2602-NUCL	DTC-H	12C0-301

PIP SUMMARY

Time Mark Every 60 S	HNGS Spectroscopy Gamma Ray (HSGR)	HLDS Long Spaced Photoelectric Effect (PEFL)	HLDS Bulk Density Correction (DRH)
0	0	0	0
5	5	5	5
10	10	10	10



PIP SUMMARY

Time Mark Every 60 S	HNGS Spectroscopy Gamma Ray (HSGR)	HLDS Long Spaced Photoelectric Effect (PEFL)	HLDS Bulk Density Correction (DRH)
0	0	0	0
5	5	5	5
10	10	10	10

Parameters

Description	Value
BHS	OPEN DEGC
BHT	OPEN DEGC
DGF1	0.989512 DEG
DGF2	0.989512 DEG
DGF3	0.989512 DEG
DGF4	0.989512 DEG
DGF5	0.989512 DEG
DGF6	0.989512 DEG
DGF7	0.989512 DEG
DGF8	0.989512 DEG
DGF9	0.989512 DEG
DGF10	0.989512 DEG
DGF11	0.989512 DEG
DGF12	0.989512 DEG
DGF13	0.989512 DEG
DGF14	0.989512 DEG
DGF15	0.989512 DEG
DGF16	0.989512 DEG
DGF17	0.989512 DEG
DGF18	0.989512 DEG
DGF19	0.989512 DEG
DGF20	0.989512 DEG
DGF21	0.989512 DEG
DGF22	0.989512 DEG
DGF23	0.989512 DEG
DGF24	0.989512 DEG
DGF25	0.989512 DEG
DGF26	0.989512 DEG
DGF27	0.989512 DEG
DGF28	0.989512 DEG
DGF29	0.989512 DEG
DGF30	0.989512 DEG
DGF31	0.989512 DEG
DGF32	0.989512 DEG
DGF33	0.989512 DEG
DGF34	0.989512 DEG
DGF35	0.989512 DEG
DGF36	0.989512 DEG
DGF37	0.989512 DEG
DGF38	0.989512 DEG
DGF39	0.989512 DEG
DGF40	0.989512 DEG
DGF41	0.989512 DEG
DGF42	0.989512 DEG
DGF43	0.989512 DEG
DGF44	0.989512 DEG
DGF45	0.989512 DEG
DGF46	0.989512 DEG
DGF47	0.989512 DEG
DGF48	0.989512 DEG
DGF49	0.989512 DEG
DGF50	0.989512 DEG
DGF51	0.989512 DEG
DGF52	0.989512 DEG
DGF53	0.989512 DEG
DGF54	0.989512 DEG
DGF55	0.989512 DEG
DGF56	0.989512 DEG
DGF57	0.989512 DEG
DGF58	0.989512 DEG
DGF59	0.989512 DEG
DGF60	0.989512 DEG
DGF61	0.989512 DEG
DGF62	0.989512 DEG
DGF63	0.989512 DEG
DGF64	0.989512 DEG
DGF65	0.989512 DEG
DGF66	0.989512 DEG
DGF67	0.989512 DEG
DGF68	0.989512 DEG
DGF69	0.989512 DEG
DGF70	0.989512 DEG
DGF71	0.989512 DEG
DGF72	0.989512 DEG
DGF73	0.989512 DEG
DGF74	0.989512 DEG
DGF75	0.989512 DEG
DGF76	0.989512 DEG
DGF77	0.989512 DEG
DGF78	0.989512 DEG
DGF79	0.989512 DEG
DGF80	0.989512 DEG
DGF81	0.989512 DEG
DGF82	0.989512 DEG
DGF83	0.989512 DEG
DGF84	0.989512 DEG
DGF85	0.989512 DEG
DGF86	0.989512 DEG
DGF87	0.989512 DEG
DGF88	0.989512 DEG
DGF89	0.989512 DEG
DGF90	0.989512 DEG
DGF91	0.989512 DEG
DGF92	0.989512 DEG
DGF93	0.989512 DEG
DGF94	0.989512 DEG
DGF95	0.989512 DEG
DGF96	0.989512 DEG
DGF97	0.989512 DEG
DGF98	0.989512 DEG
DGF99	0.989512 DEG
DGF100	0.989512 DEG

OP System Version: 12C0-301

DIT-E	12C0-301	DTA-A	12C0-301
HLDS	SPC-2602-NUCL	LDCS-B	SPC-2602-NUCL
APS-C	SPC-2602-NUCL	HNGC-B	SPC-2602-NUCL
HNGS-BA	SPC-2602-NUCL	DTC-H	12C0-301

Output DLIS Files

DEFAULT	PI_LDL_APS_NGS_008LUP	FN:12	PRODUCER	17-Jul-2006 03:15
REDUCED	PI_LDL_APS_NGS_008LUP	FR:13	PRODUCER	17-Jul-2006 03:15