



COMPANY:

WELL: NGRP-01-17B

FIELD:

Ocean Andaman Sea

COUNTRY:

Date Processed: 28-Jul-2006

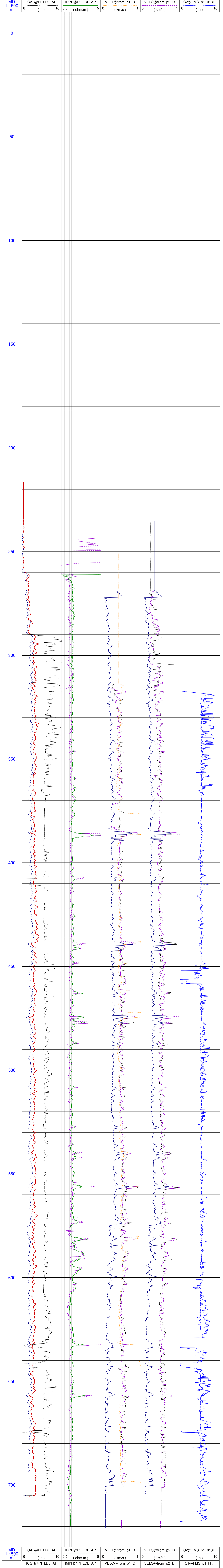
Job Number: Processed at:

Well Location: Longitude:

Latitude: Elevations: KB: 11.3m DF: 11m GL: -1365m

FOLD HERE The well name, location and borehole reference data were furnished by the customer.

All interpretations are opinions based on inferences from electrical or other measurements and we cannot, and do not guarantee the accuracy or correctness of any interpretation, and we shall not, except in the case of gross or willful negligence on our part, be liable or responsible for any loss, costs, damages or expenses incurred or sustained by anyone resulting from any interpretations made by any of our officers, agents or employees. These interpretations are also subject to Clause 4 of our General Terms and Conditions as set out in our current Price Schedule.



MD 1 : 500 m	LCAL@PI_LDL_AP	IDPH@PI_LDL_AP	VELT@from_p1_D	VELO@from_p2_D	C2@FMS_p1_013L
	6 (in) 16	0.5 (ohm.m) 5	0 (km/s) 1	0 (km/s) 1	6 (in) 16
MD 1 : 500 m	HCGR@PI_LDL_AP	IMPH@PI_LDL_AP	VELS@from_p1_D	VELS@from_p2_D	C1@FMS_p1;11
	0 (gAPI) 120	0.5 (ohm.m) 5	0 (km/s) 1	0 (km/s) 1	6 (in) 16
MD 1 : 500 m	HSGR@PI_LDL_AP	SFLU@PI_LDL_AP	VELS@from_p1_D	VELP@from_p2_D	
	0 (gAPI) 120	0.5 (ohm.m) 5	0 (km/s) 1	1.4 (km/s) 2.4	
			VELP@from_p2_D		
			1.4 (km/s) 2.4		