

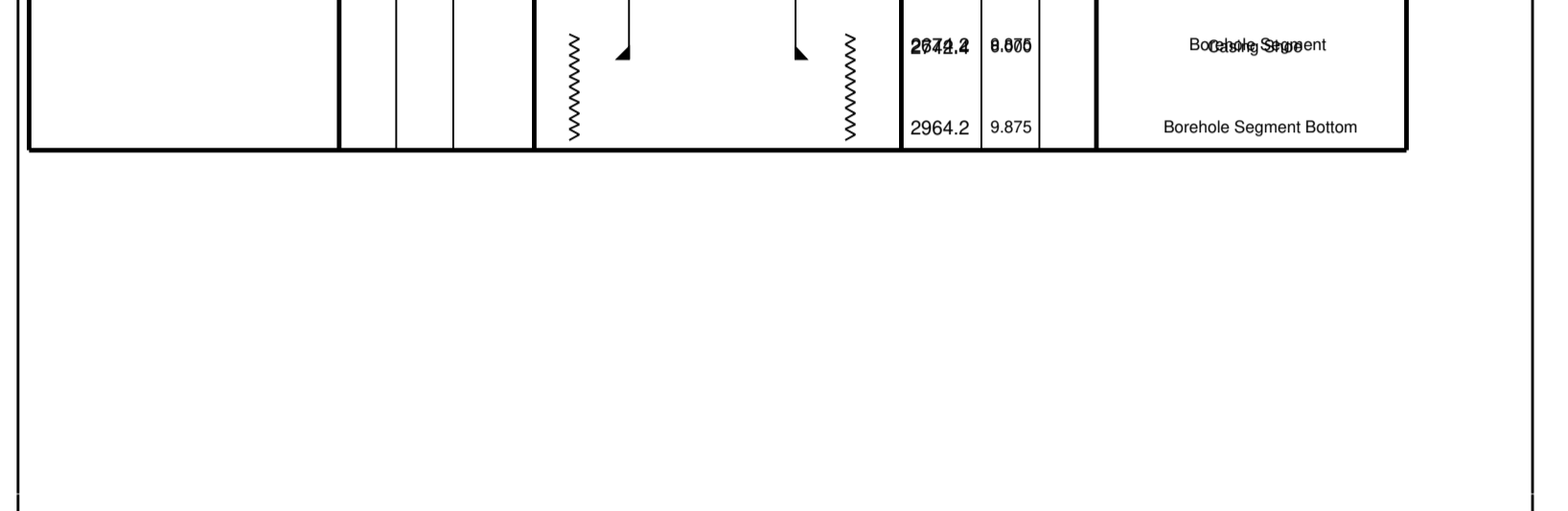
Table with 4 columns: Run 1, Run 2, Run 3, Run 4. Contains well logs and data for Run 1 and Run 2, including parameters like Fluid Loss, Temperature, and Depth.

THE USE OF AND RELIANCE UPON THIS RECORDED DATA BY THE HEREIN NAMED COMPANY (AND ANY OF ITS AFFILIATES, PARTNERS, REPRESENTATIVES, AGENTS, CONSULTANTS AND EMPLOYEES) IS SUBJECT TO THE TERMS AND CONDITIONS AGREED UPON BETWEEN SCHLUMBERGER AND THE COMPANY, INCLUDING (a) RESTRICTIONS ON USE OF THE RECORDED DATA, (b) DISCLAIMERS AND WAIVERS OF WARRANTIES AND REPRESENTATIONS REGARDING ACCURACY, (c) USE OF AND RELIANCE ON THE RECORDED DATA, AND (d) CUSTOMER'S FULL AND SOLE RESPONSIBILITY FOR ANY INFERENCE DRAWN OR DECISION MADE IN CONNECTION WITH THE USE OF THIS RECORDED DATA.

Table with 2 columns: OTHER SERVICES1, OTHER SERVICES2. Lists various service codes and remarks.

Table with 4 columns: SERVICE ORDER #, PROGRAM VERSION, LOGGED INTERVAL, START, STOP. Shows service order details for RUN 1 and RUN 2.

Table with 2 columns: SURFACE EQUIPMENT, DOWNHOLE EQUIPMENT. Lists equipment used in the well, such as SFT, GSR, and various sensors.



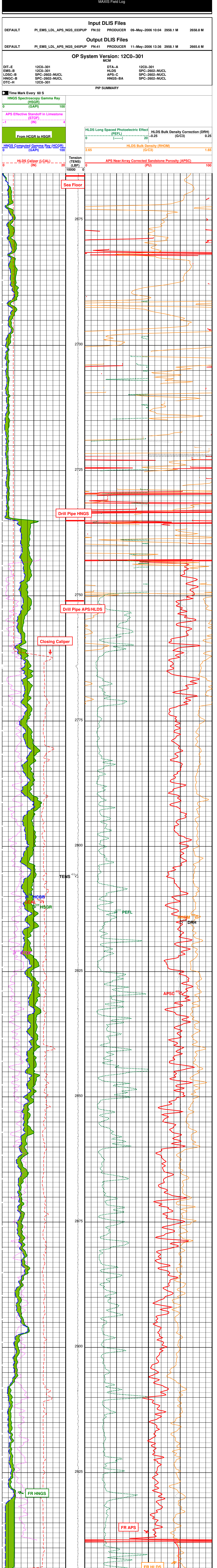
MAXIS Field Log

Input DLIS Files: DEFAULT PLEMS\_LDL\_APS\_NGS\_033PUP FN-32 PRODUCER 09-May-2006 10:04 2958.1 M 2658.8 M

Output DLIS Files: DEFAULT PLEMS\_LDL\_APS\_NGS\_045PUP FN-41 PRODUCER 11-May-2006 13:36 2958.1 M 2665.6 M

OP System Version: 12C0-301 MCM

PIP SUMMARY: DIT-E, LDCS-B, HNGS-B, DTA-A, DTC-H, DTA-A, DTC-H, DTA-A, DTC-H



Time Mark Every 60 S

Table with 4 columns: DLIS Name, Description, Parameters, Value. Lists parameters and their values for various DLIS files.

OP System Version: 12C0-301 MCM

Input DLIS Files: DEFAULT PLEMS\_LDL\_APS\_NGS\_033PUP FN-32 PRODUCER 09-May-2006 10:04 2958.1 M 2658.8 M

Output DLIS Files: DEFAULT PLEMS\_LDL\_APS\_NGS\_045PUP FN-41 PRODUCER 11-May-2006 13:36

Company: Lamont Doherty Schlumberger  
Well: KKGH01 Site 1 Hole A  
Field: Kerala Konkani Basin  
Rig: Arabes Resolution  
Ocean: Arabian Sea  
HLD/APS Porosity