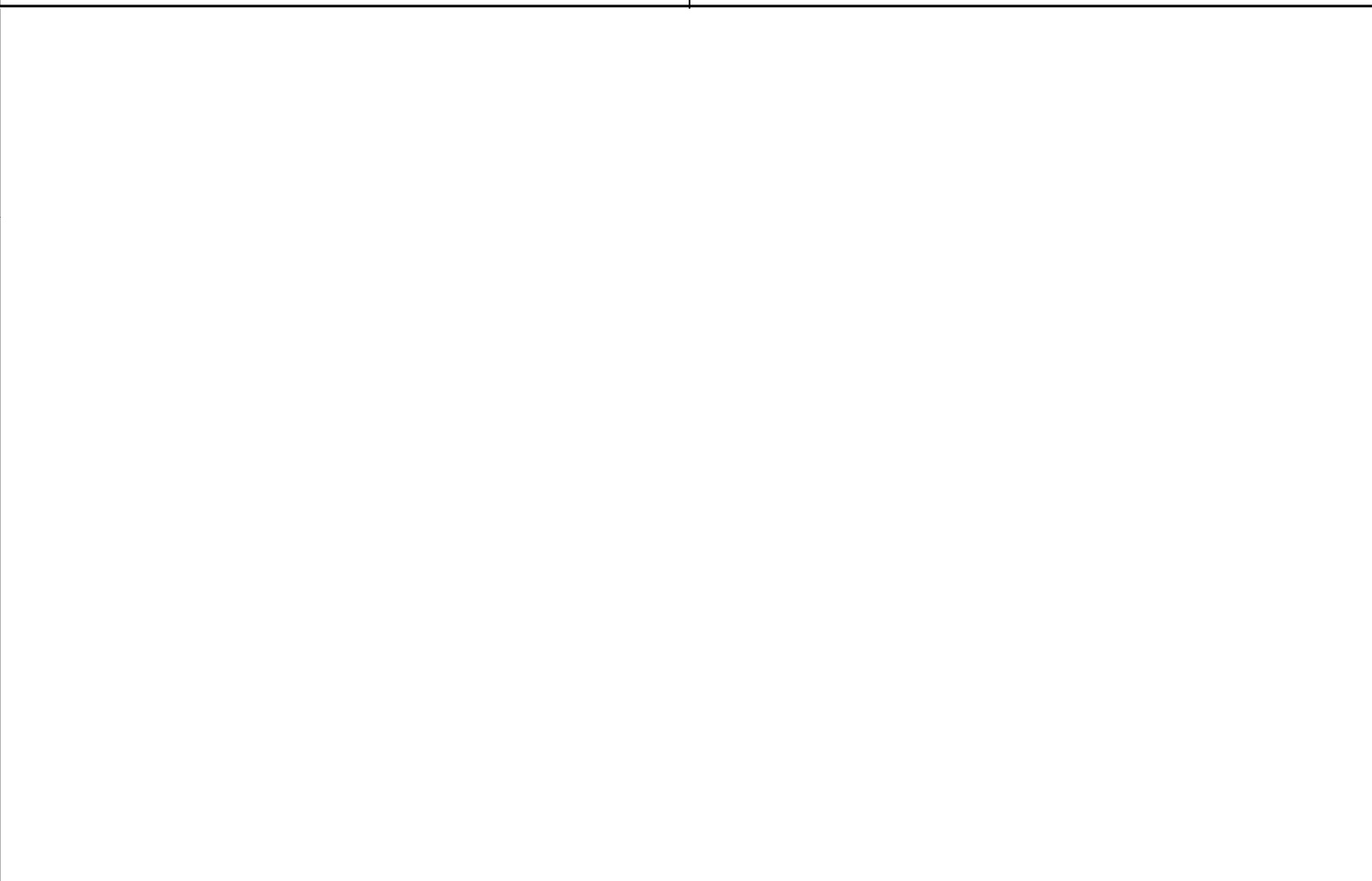


Company: Lamont Doherty Well: NGHP-01-21B Rig: Joides Resolution Ocean: Bay of Bengal
Dual Induction Tool Gamma Ray Down Log
Log Location: NGHP-01-21B
Log Interval: 0.0m / 0.1m
API Serial No: 10-45-1912-N
Latitude: 10-45-1912-N
Longitude: 85-06-7855-E
Log Depth: 1250m
Mud Weight: 1.07 g/cm3
Mud Viscosity: 11.483 in
Mud Filtrate: 1.07 g/cm3
Mud Solids: 11.483 in

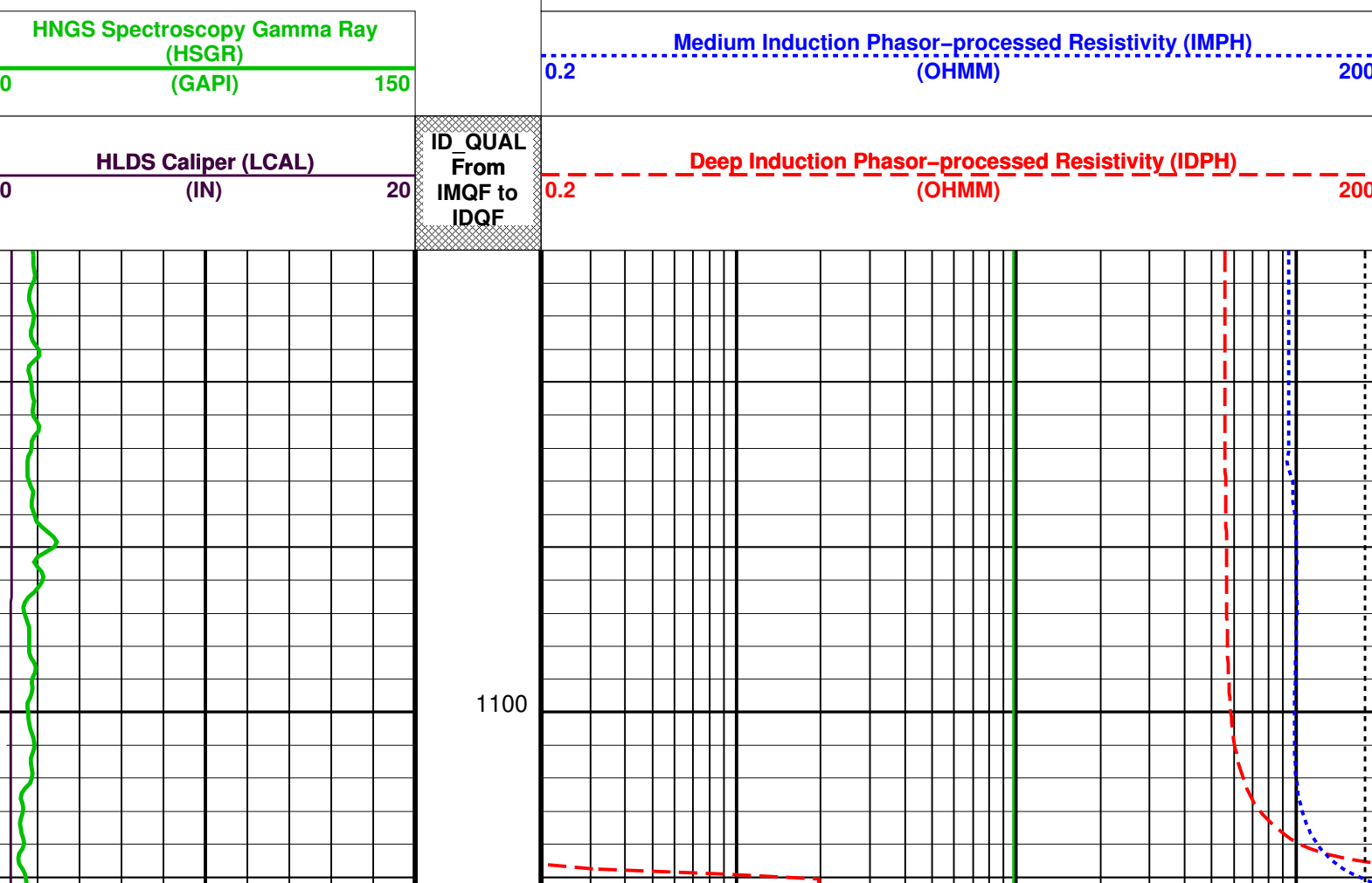
Run #	Run 1	Run 2	Run 3	Run 4
Run 1	12C0-301	12C0-301		
Run 2				
Run 3				
Run 4				

DISCLAIMER: THE USE OF AND RELIANCE UPON THIS RECORDED DATA BY THE HEREIN NAMED COMPANY AND ANY OF ITS AFFILIATES, PARTNERS, REPRESENTATIVES, AGENTS, CONSULTANTS AND EMPLOYEES IS SUBJECT TO THE TERMS AND CONDITIONS AGREED UPON BETWEEN SCHLUMBERGER AND THE COMPANY...
OTHER SERVICES1: OS1: APS, OS2: HLDS, OS3: HNGS, OS4: SPC, OS5: HNGS-BA
OTHER SERVICES2: OS1: DTA, OS2: LDSC, OS3: HNGC, OS4: DTC, OS5: HNGS-BA

EQUIPMENT DESCRIPTION
SURFACE EQUIPMENT: SFT-281 6250, SFT-178 6250, SFT-L 135, WITM (DTS)-A
DOWNHOLE EQUIPMENT: LEH-QT, LEH-QT, DTC-H, ECH-KA, HNGS-BA, HNGS-BA 194, HNSH-BA 205, HNGC Stat, HNGH-A 115, AH-191, ILE-D, ILE-D, APS-C 22, APS-C 22, MNTR-F 4185, AH-190, LDSC-B, LDSC-B 333, HLDS, GSR-Z 2326, HLDS, HLDS, HEH-H 35, HLDP-C 45, DTA-A, ECH-KE, DTA-A 8081, DIT-E, DIC-EB 335, APS-C 22, DIS-HB 129, Caliper SS LS Status

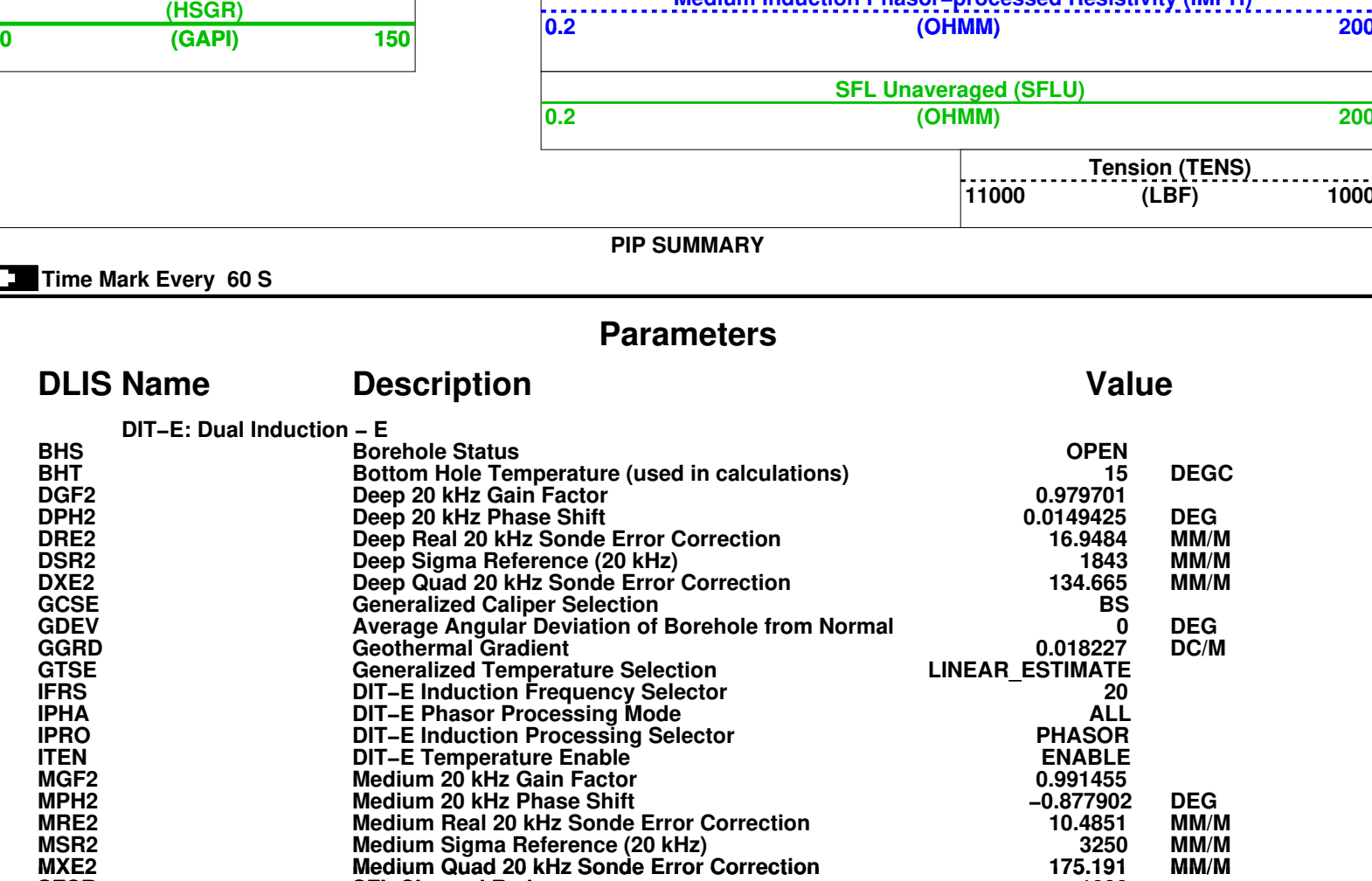


Company: Lamont Doherty Well: NGHP-01-21B
Input DLIS Files: Flip_PI_LDL_APS_NGS_008LUP, PRODUCER 15-Aug-2006 13:32 1153.4 M 1081.3 M
Output DLIS Files: PI_LDL_APS_NGS_009PUP, FN:11, PRODUCER 15-Aug-2006 13:34 1153.4 M 1086.0 M
OP System Version: 12C0-301 MCM
Parameters: DIT-E, HLDS, APS-C, HNGS-BA, DTA-A, LDSC-B, HNGC-B, DTC-H, 12C0-301, SPC-2602-NUCL, SPC-2602-NUCL, SPC-2602-NUCL, 12C0-301



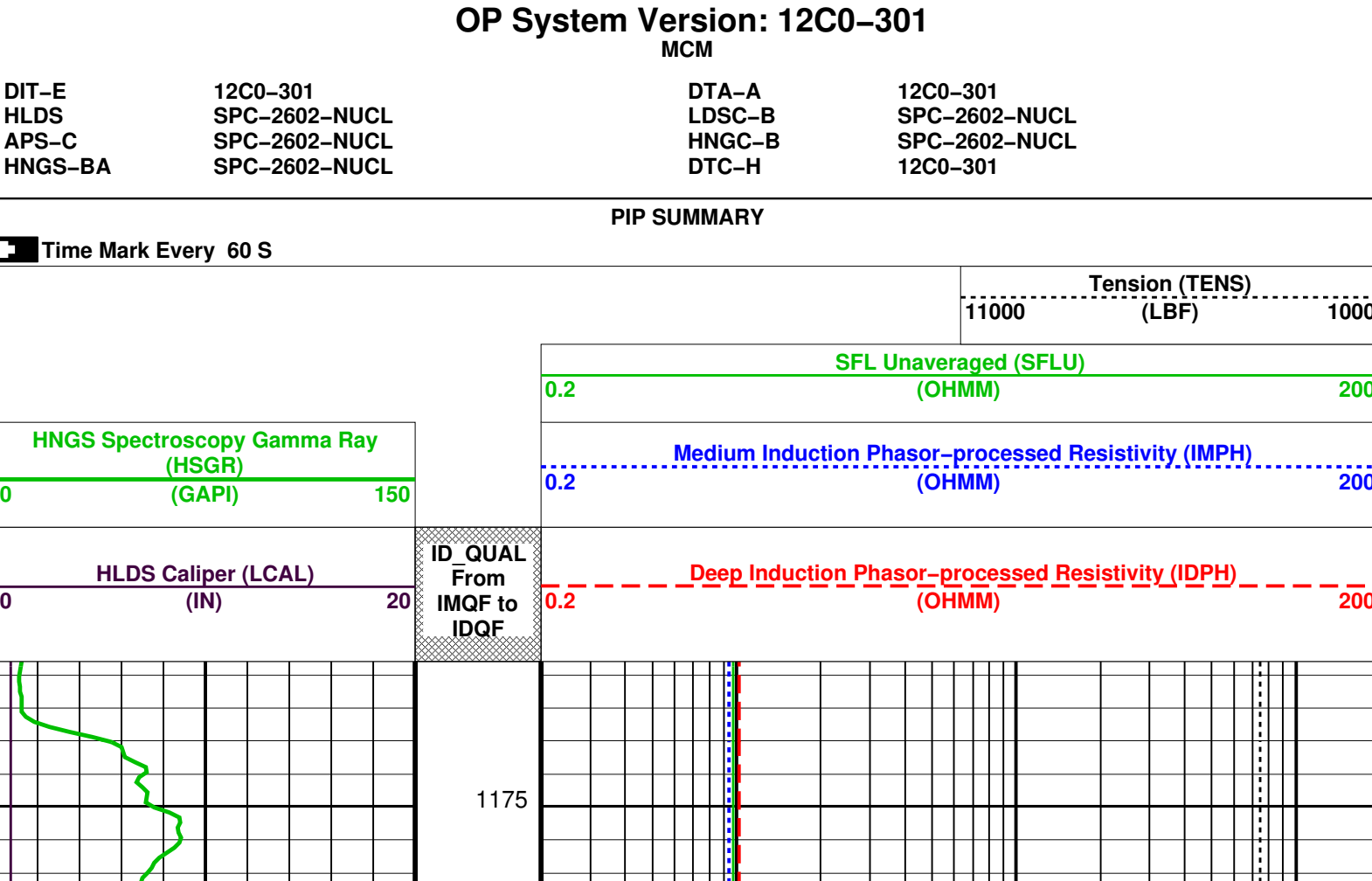
Parameters table listing DLIS Name, Description, and Value for various geophysical parameters.

Company: Lamont Doherty Well: NGHP-01-21B
Input DLIS Files: Flip_PI_LDL_APS_NGS_010LUP, PRODUCER 15-Aug-2006 14:37 1211.6 M 1165.9 M
Output DLIS Files: PI_LDL_APS_NGS_011PUP, FN:12, PRODUCER 15-Aug-2006 14:38 1211.6 M 1170.6 M
OP System Version: 12C0-301 MCM
Parameters: DIT-E, HLDS, APS-C, HNGS-BA, DTA-A, LDSC-B, HNGC-B, DTC-H, 12C0-301, SPC-2602-NUCL, SPC-2602-NUCL, SPC-2602-NUCL, 12C0-301



Parameters table listing DLIS Name, Description, and Value for various geophysical parameters.

Company: Lamont Doherty Well: NGHP-01-21B
Input DLIS Files: Flip_PI_LDL_APS_NGS_010LUP, PRODUCER 15-Aug-2006 14:37 1211.6 M 1165.9 M
Output DLIS Files: PI_LDL_APS_NGS_011PUP, FN:12, PRODUCER 15-Aug-2006 14:38 1211.6 M 1170.6 M
OP System Version: 12C0-301 MCM
Parameters: DIT-E, HLDS, APS-C, HNGS-BA, DTA-A, LDSC-B, HNGC-B, DTC-H, 12C0-301, SPC-2602-NUCL, SPC-2602-NUCL, SPC-2602-NUCL, 12C0-301



Parameters table listing DLIS Name, Description, and Value for various geophysical parameters.

Company: Lamont Doherty Well: NGHP-01-21B Rig: Joides Resolution Ocean: Bay of Bengal
Dual Induction Tool Gamma Ray Down Log
Log Location: NGHP-01-21B
Log Interval: 0.0m / 0.1m
API Serial No: 10-45-1912-N
Latitude: 10-45-1912-N
Longitude: 85-06-7855-E
Log Depth: 1250m
Mud Weight: 1.07 g/cm3
Mud Viscosity: 11.483 in
Mud Filtrate: 1.07 g/cm3
Mud Solids: 11.483 in

Run #	Run 1	Run 2	Run 3	Run 4
Run 1	12C0-301	12C0-301		
Run 2				
Run 3				
Run 4				

DISCLAIMER: THE USE OF AND RELIANCE UPON THIS RECORDED DATA BY THE HEREIN NAMED COMPANY AND ANY OF ITS AFFILIATES, PARTNERS, REPRESENTATIVES, AGENTS, CONSULTANTS AND EMPLOYEES IS SUBJECT TO THE TERMS AND CONDITIONS AGREED UPON BETWEEN SCHLUMBERGER AND THE COMPANY...
OTHER SERVICES1: OS1: APS, OS2: HLDS, OS3: HNGS, OS4: SPC, OS5: HNGS-BA
OTHER SERVICES2: OS1: DTA, OS2: LDSC, OS3: HNGC, OS4: DTC, OS5: HNGS-BA