

Input DLIS Files

Type: **DEFAULT**

File ID: **DVM_030PDP**

FN: **29** 24-May-2006 12:53

PRODUCER

3416.0 FT

3615.5 FT

IDEAL Version: ID10_2C_01.1SV IDF

ECO6

id10_2c_01

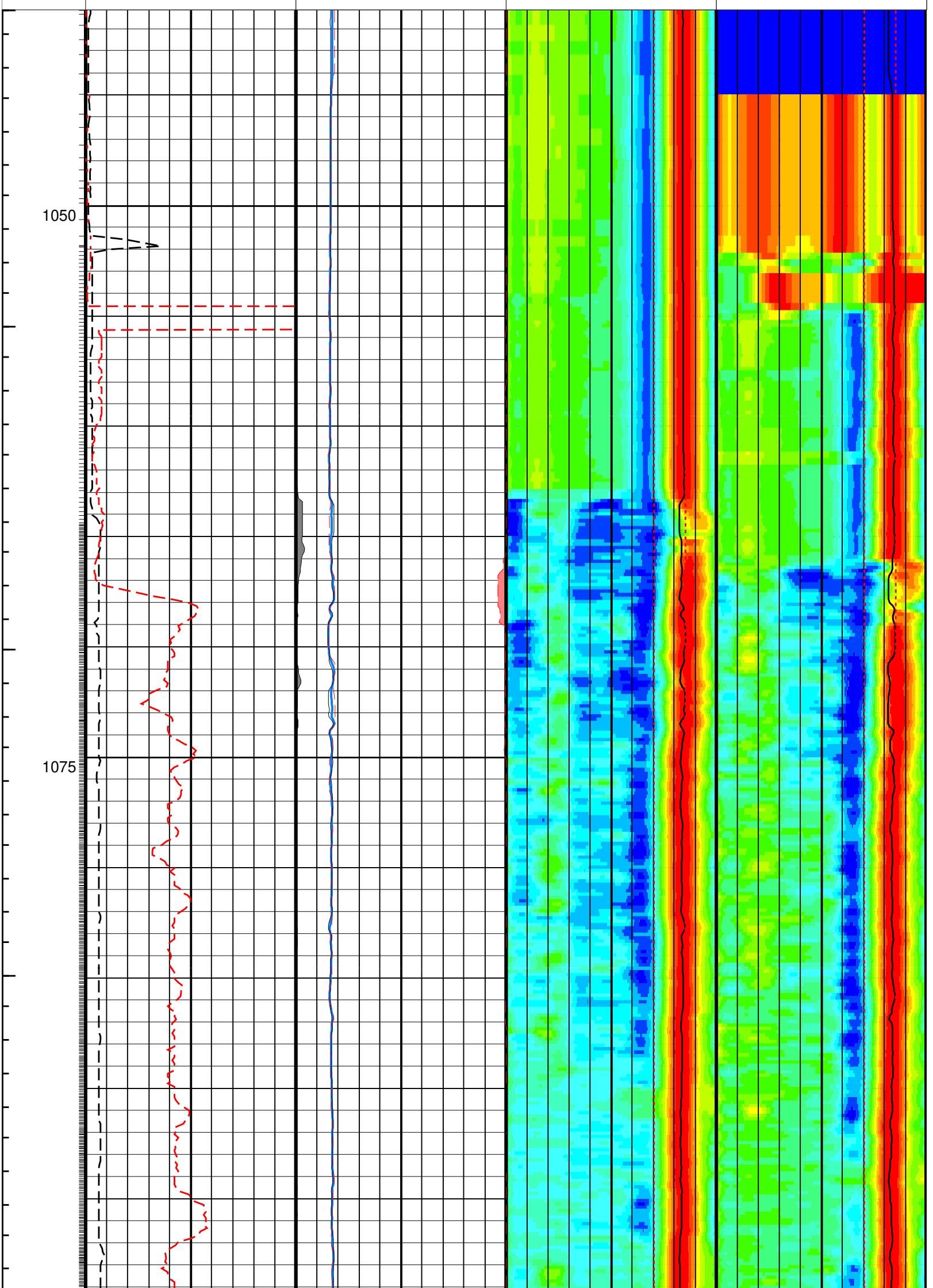
Format: **ISONIC_BHC_Log** Vertical Scale: 1:200

Graphics File Created: 05-Jun-2006 15:33

PIP SUMMARY

- └ ISONIC Integrated Transit Time Every 1 MS
- └ ISONIC Integrated Transit Time Every 10 MS
- └ ISONIC Samples

	Delta-T Compressional Borehole Compensated (Depth Derived) (DTBC) 240 (US/F) 40		
	Delta-T Compressional from Transmitter Array (DTTA) 240 (US/F) 40	Min Amplitude Max 0 RCVR Projection 1 (STRA) (US/F) 240	Min Amplitude Max 0 TRSM Projection 1 (STTA) (US/F) 240
	Delta-T Compressional from Receiver Array (DTRA) 240 (US/F) 40	Maximum Labeling Slowness, Compressional (MXSL) 40 (US/F) 240	Maximum Labeling Slowness, Compressional (MXSL) 40 (US/F) 240
Number of Waveforms used in Transmitter Array Computation (NWTa) 0 (----) 200	Coherence at Compressional Peak for the Transmitter Array (CHTA) -4 (----) 1	Minimum Labeling Slowness, Compressional (MNSL) 40 (US/F) 240	Minimum Labeling Slowness, Compressional (MNSL) 40 (US/F) 240
Number of Waveforms used in Receiver Array Computation (NWRa) 0 (----) 400	Coherence at Compressional Peak for the Receiver Array (CHRA) 1 (----) -4	Delta-T Compressional from Receiver Array (DTRA) 40 (US/F) 240	Delta-T Compressional from Transmitter Array (DTTA) 40 (US/F) 240



Number of Waveforms used in Receiver Array Computation (NWRa) 0 (----) 400	Coherence at Compressional Peak for the Receiver Array (CHRA) 1 (----) -4	Delta-T Compressional from Receiver Array (DTRA) 40 (US/F) 240	Delta-T Compressional from Transmitter Array (DTTA) 40 (US/F) 240
Number of Waveforms used in Transmitter Array Computation (NWTa) 0 (----) 200	Coherence at Compressional Peak for the Transmitter Array (CHTA) -4 (----) 1	Minimum Labeling Slowness, Compressional (MNSL) 40 (US/F) 240	Minimum Labeling Slowness, Compressional (MNSL) 40 (US/F) 240
	Delta-T Compressional from Receiver Array (DTRA) 240 (US/F) 40	Maximum Labeling Slowness, Compressional (MXSL) 40 (US/F) 240	Maximum Labeling Slowness, Compressional (MXSL) 40 (US/F) 240

		Min	Amplitude	Max	Min	Amplitude	Max
	Delta-T Compressional from Transmitter Array (DTTA)						
	240 (US/F) 40	0	RCVR Projection (STRA) (US/F)	1	0	TRSM Projection (STTA) (US/F)	1
		40		240	40		240
	Delta-T Compressional Borehole Compensated (Depth Derived) (DTBC)						
	240 (US/F) 40						

PIP SUMMARY

- └ ISONIC Integrated Transit Time Every 1 MS
- └ ISONIC Integrated Transit Time Every 10 MS
 - └ ISONIC Samples

IDEAL Version: ID10_2C_01.1SV
IDF

ECO6 id10_2c_01

Input DLIS Files

Type:DEFAULT File ID:DVM_030PDP FN:29 24-May-2006 12:53 PRODUCER 3416.0 FT 3615.5 FT