



COMPANY: LDEO

WELL: GDGH05-A Site 3 Hole A

FIELD: KG Basin

STATE:

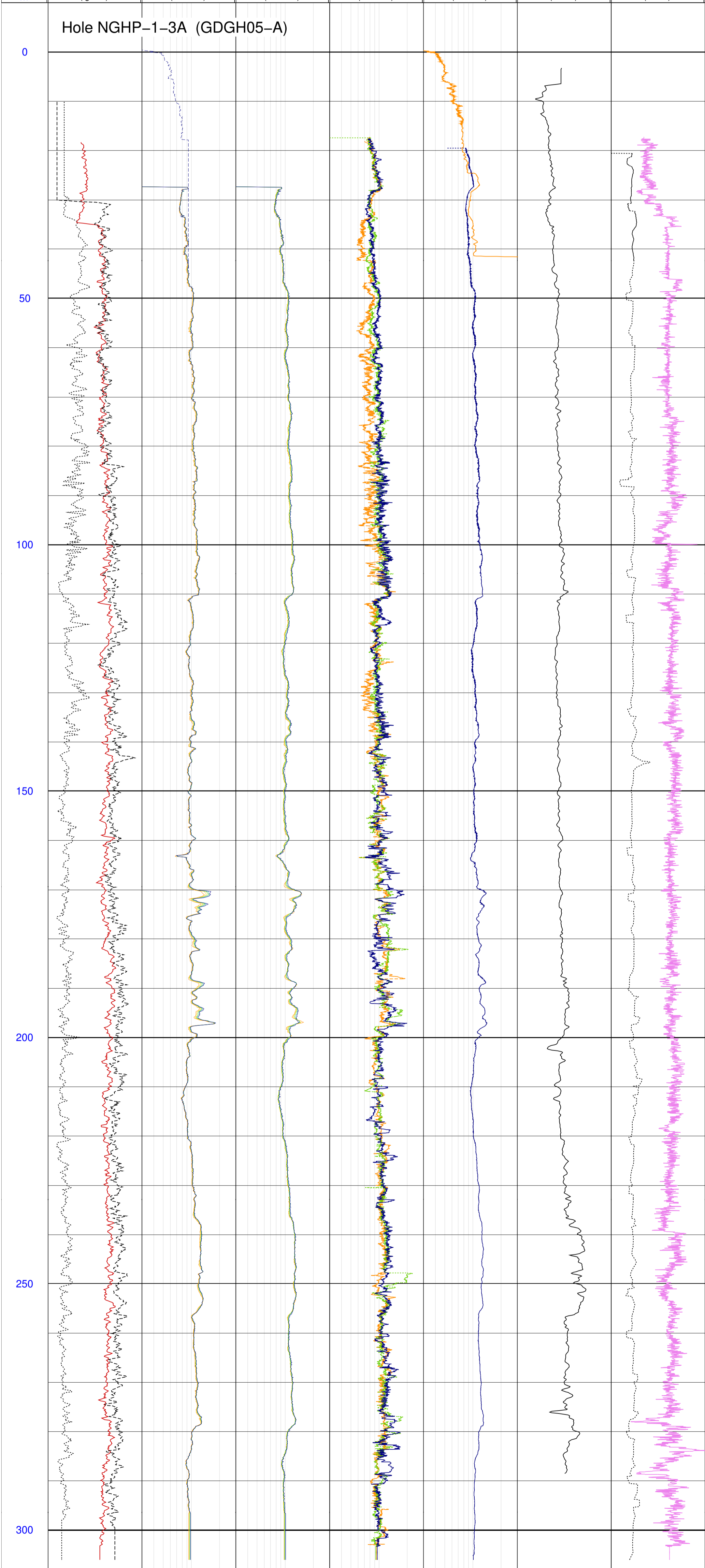
COUNTRY:

Date Processed: _____ Date Logged: _____
 Job Number: _____ Processed at: _____
 Well Location: _____
 Latitude: _____ Longitude: _____
 Elevations: KB: 11m DF: 11m GL: -1076m

FOLD HERE The well name, location and borehole reference data were furnished by the customer.

All interpretations are opinions based on inferences from electrical or other measurements and we cannot, and do not guarantee the accuracy or correctness of any interpretation, and we shall not, except in the case of gross or willful negligence on our part, be liable or responsible for any loss, costs, damages or expenses incurred or sustained by anyone resulting from any interpretations made by any of our officers, agents or employees. These interpretations are also subject to Clause 4 of our General Terms and Conditions as set out in our current Price Schedule.

	P28B@DVM_024PD 0.3 (ohm.m) 3					
	P22B@DVM_024PD 0.3 (ohm.m) 3	A16B@DVM_024PD 0.3 (ohm.m) 3				
	P16B@DVM_024PD 0.3 (ohm.m) 3	A22B@DVM_024PD 0.3 (ohm.m) 3				
DCAV@DVM_024PD 9 (in) 14	P34B@DVM_024PD 0.3 (ohm.m) 3	A28B@DVM_024PD 0.3 (ohm.m) 3	BSAV@LWD_021PD 0.3 (ohm.m) 3			
GR@LWD_021PDP; 0 (gAPI) 150	P40B@DVM_024PD 0.3 (ohm.m) 3	A34B@DVM_024PD 0.3 (ohm.m) 3	BMAV@LWD_021PD 0.3 (ohm.m) 3	RBIT@LWD_021PD 0.3 (ohm.m) 3		RPM@LWD_021PDP 0 (rpm) 100
MD 1:500 m GRMA@DVM_024PD 0 (gAPI) 150	P40B@FLIP_DVM_024PD 0.3 (ohm.m) 3	A40B@DVM_024PD 0.3 (ohm.m) 3	BDAV@LWD_021PD 0.3 (ohm.m) 3	RING@FLIP_LWD_021PD 0.3 (ohm.m) 3	VELPfrom DTCC; 1.3 (km/s) 1.8	ROP5_RM@LWD_021PDP 0 (m/hr) 100



MD 1:500 m GRMA@DVM_024PD 0 (gAPI) 150	P40B@FLIP_DVM_024PD 0.3 (ohm.m) 3	A40B@DVM_024PD 0.3 (ohm.m) 3	BDAV@LWD_021PD 0.3 (ohm.m) 3	RING@FLIP_LWD_021PD 0.3 (ohm.m) 3	VELPfrom DTCC; 1.3 (km/s) 1.8	ROP5_RM@LWD_021PDP 0 (m/hr) 100
GR@LWD_021PDP; 0 (gAPI) 150	P40B@DVM_024PD 0.3 (ohm.m) 3	A34B@DVM_024PD 0.3 (ohm.m) 3	BMAV@LWD_021PD 0.3 (ohm.m) 3	RBIT@LWD_021PD 0.3 (ohm.m) 3		RPM@LWD_021PDP 0 (rpm) 100
DCAV@DVM_024PD 9 (in) 14	P34B@DVM_024PD 0.3 (ohm.m) 3	A28B@DVM_024PD 0.3 (ohm.m) 3	BSAV@LWD_021PD 0.3 (ohm.m) 3			
	P16B@DVM_024PD 0.3 (ohm.m) 3	A22B@DVM_024PD 0.3 (ohm.m) 3				
	P22B@DVM_024PD 0.3 (ohm.m) 3	A16B@DVM_024PD 0.3 (ohm.m) 3				
	P28B@DVM_024PD 0.3 (ohm.m) 3					